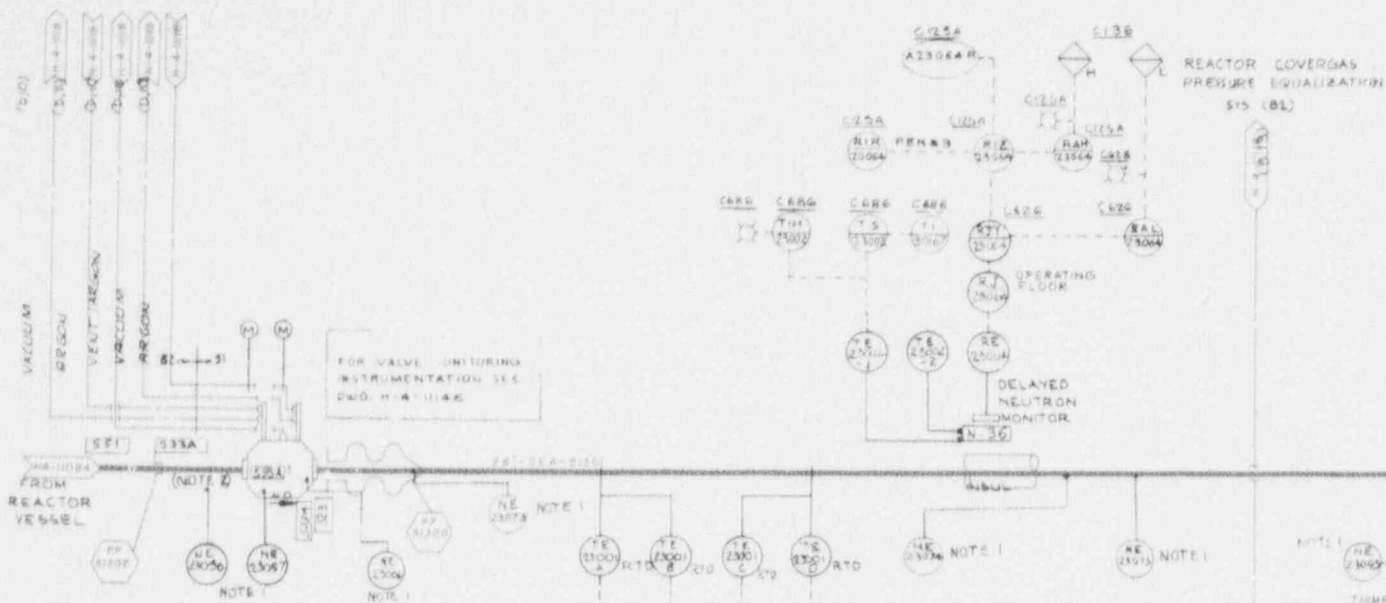
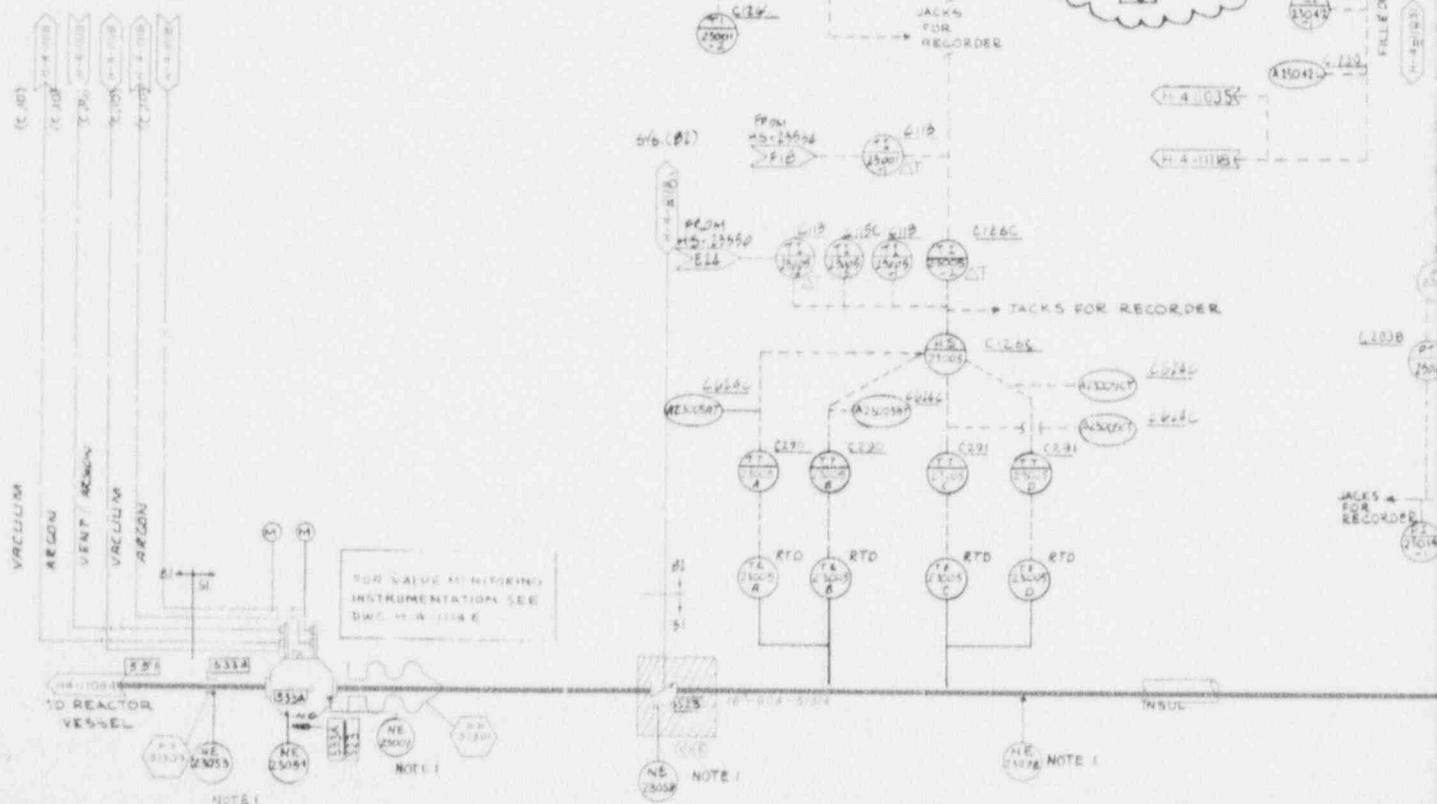


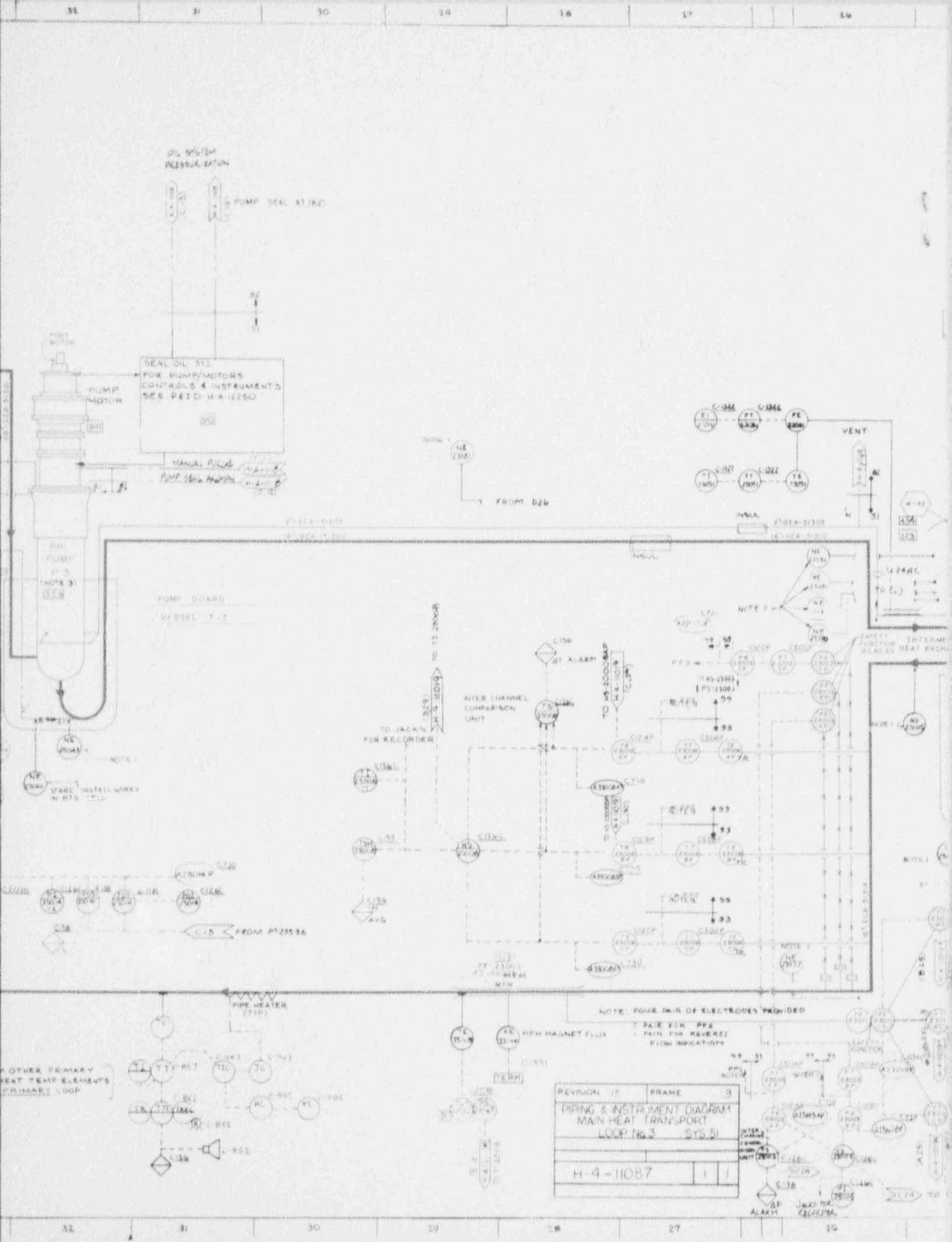
SYSTEM (B2)

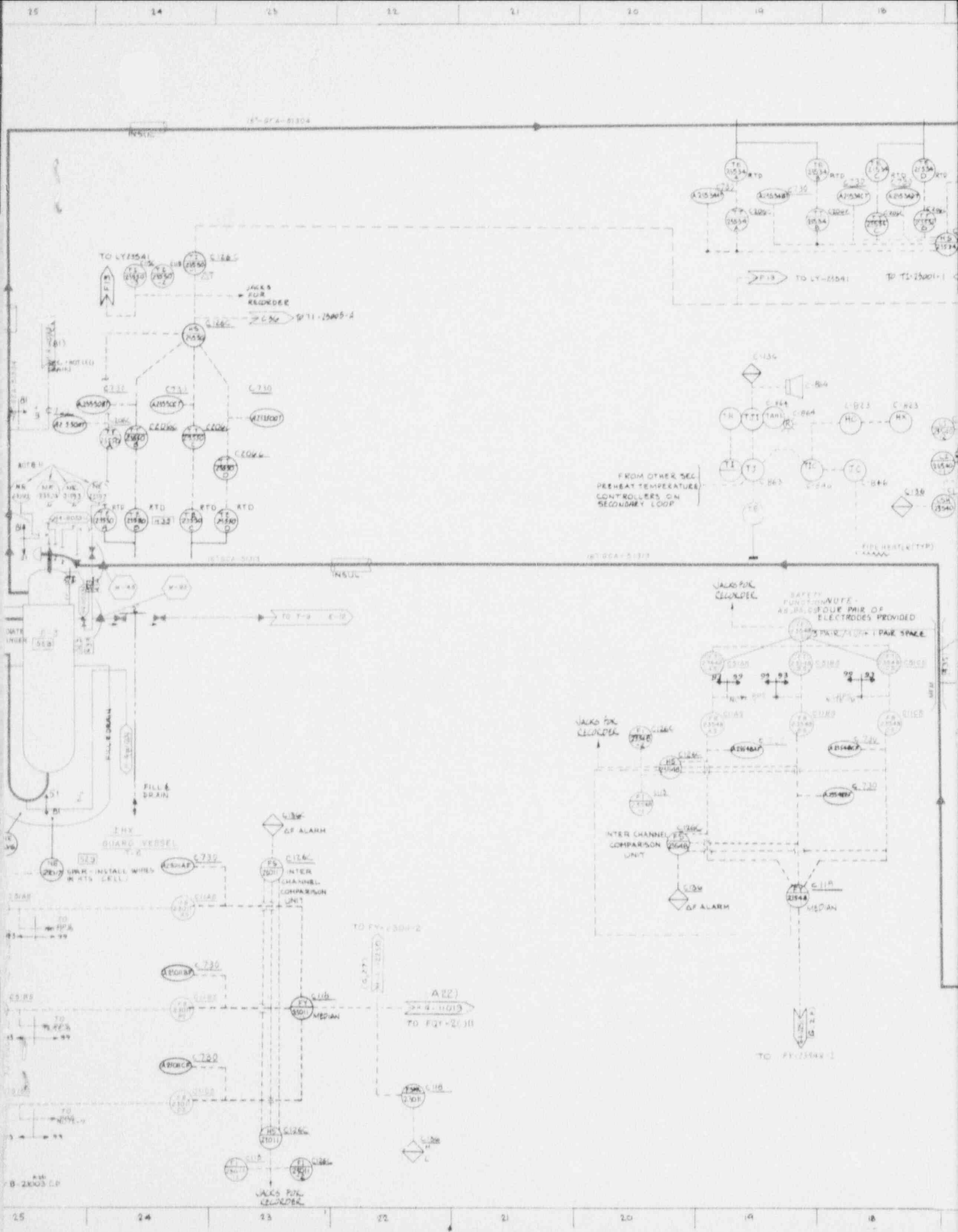


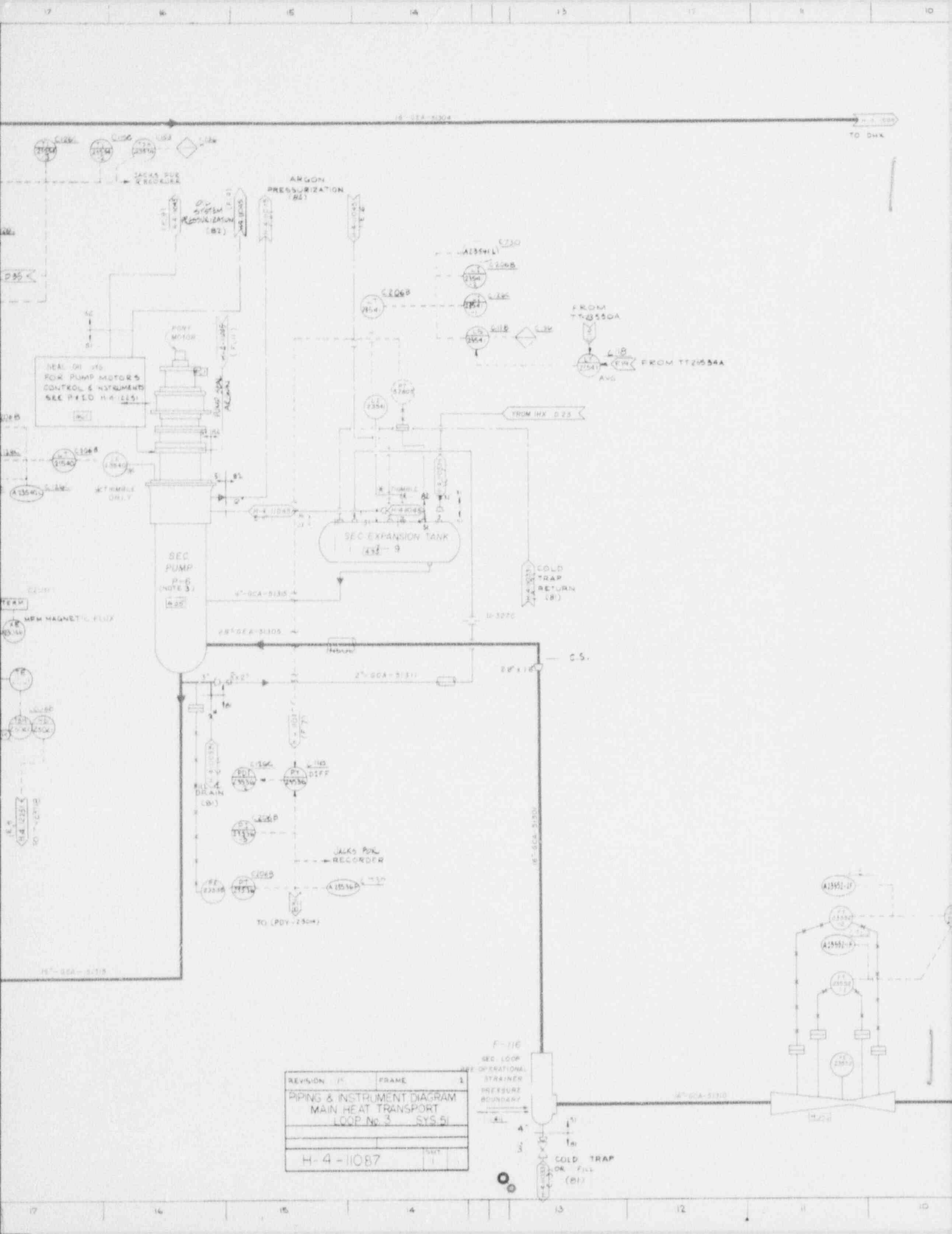
SYSTEM (B2)



800110677







REVISION	15	FRAME	1
PIPING & INSTRUMENT DIAGRAM			
MAIN HEAT TRANSPORT			
LOOP No. 3 SYS 51			
H-4-11087			

NOTES CONTD.

11. THESE COMPONENT LEAK DETECTORS ARE WIRED BACK TO INDICATORS ON PANEL C-223 WHERE A COMMON ALARM IS DERIVED AND WIRED TO THE PLANT ANNUNCIATOR SYSTEM. SEE 500 73, PART 13

16	REVISED PER ECH 41015	16
15	REVISED PER ECH 41066	15
14	REVISED PER ECH 41078	14
13	REVISED PER ECH 41011	13
12	REVISED PER ECH 41054	12
11	REVISED PER ECH 41010	11
10	REVISED PER ECH 41038	10
9	DESCRIPTION	9
8	REVISIONS	8
7	DATE	7
6	BY	6
5	DATE	5
4	BY	4
3	DATE	3
2	BY	2
1	DATE	1

REVISIONS
BY
DATE
BY
DATE

REFERENCE DRAWINGS		
DWG NO.	REV	DESCRIPTION
H-4-11088		MHTS-LOOP #3 - DHX
H-4-12250		PRIMARY PUMP MONITORING INSTRUMENTATION
H-4-12251		SECONDARY PUMP MONITORING INSTRUMENTATION
H-4-11137		MHTS LOOP #3 DHA PREHEATER
H-4-116264		EDIR MHTS CONTRL SYS EQUIP
H-4-11019		RED MHTS LOOP #3
H-4-11069		MHTS REACTOR VESSEL
H-4-11146		MHTS PRIM. SOL. VALVES MONIT
H-4-11031		2 PRIM. HA. PROCESS SYS
H-4-11033		2 SEC. HA. PROCESS SYS
H-4-11045		A-1 BISTR. OUTSIDE CHT
H-4-11116		A-1 BISTR. PRIM. LOOP #3

- NOTES:
1. THESE COMPONENT LEAK DETECTORS ARE WIRED BACK TO INDICATORS ON PANEL C1203 WHERE A COMMON ALARM IS DERIVED AND WIRED TO THE PLANT ANNUNCIATOR SYSTEM. SEE SDD 93, PART 13.
 2. ALL MANUAL VALVES ARE PREFIXED BY 51.
 3. FOR PUMP INSTRUMENTATION REFER TO DRAWING 12250 FOR PUMP NO. 3 AND DPG H-4-12251 FOR PUMP NO. 4.
 4. POINT IDENTIFICATION PROVIDED FOR EACH MEASUREMENT.
 5. FOR PREHEATING SYSTEM SEE SDD 93, PART 15.
 6. PIPING MATERIAL: REF SECOND N CLAS. DESIGNATION: 1/2" B 36 TYP 304H; 2" DESIGNATES 36 TYP 304H.
 7. AUTOMATIC SEQUENCE CONTROL & INTER-LOCKING IS SHOWN ON LOGIC DIAGRAMS H-4-12034, H-4-12037.
 8. FOR ENGINEERING & PROCUREMENT RESPONSIBILITIES SEE REFERENCE DRAWING H-4-116264.
 9. THIS DRAWING INCLUDES EQUIPMENT IDENTIFIED AS PART OF THE PLANT PROTECTION SYSTEM (PPS). BEFORE MODIFYING OR MAINTAINING THE EQUIPMENT SO IDENTIFIED, THE APPROVAL OF THE COGNIZANT PERSONNEL FOR THE PPS MUST BE OBTAINED.
 10. CERTAIN EQUIPMENT SHOWN ON THIS DRAWING IS INCLUDED IN THE PLANT PROTECTION SYSTEM. THIS EQUIPMENT IS SPECIFICALLY IDENTIFIED ON THE DRAWING AS FOLLOWS: "P" DENOTES PRIMARY PROTECTION; "S" DENOTES SECONDARY PROTECTION.
 11. FOR INSTR. & PIPING SYMBOLS & USAGE SEE LEGEND SHEETS H-4-11093, H-4-11095, H-4-11096, H-4-11098 & H-4-11099.

REVISED CONTD. ZONE CA
REVISIONS CONTD. ZONE AS

REV	DATE	BY	CHKD	DESCRIPTION	REV
1	10/10/74	W. J. H. / J. H. H.	W. J. H.	REVISED PER FCN H-1047 4333, 5706	9
2	10/10/74	W. J. H. / J. H. H.	W. J. H.	REVISED PER FCN H-1047 4333, 5706	8
3	10/10/74	W. J. H. / J. H. H.	W. J. H.	REVISED PER FCN H-1047 4333, 5706	7
4	10/10/74	W. J. H. / J. H. H.	W. J. H.	REVISED PER FCN H-1047 4333, 5706	6
5	10/10/74	W. J. H. / J. H. H.	W. J. H.	REVISED PER FCN H-1047 4333, 5706	5
6	10/10/74	W. J. H. / J. H. H.	W. J. H.	REVISED PER FCN H-1047 4333, 5706	4
7	10/10/74	W. J. H. / J. H. H.	W. J. H.	REVISED PER FCN H-1047 4333, 5706	3
8	10/10/74	W. J. H. / J. H. H.	W. J. H.	REVISED PER FCN H-1047 4333, 5706	2
9	10/10/74	W. J. H. / J. H. H.	W. J. H.	REVISED PER FCN H-1047 4333, 5706	1
10	10/10/74	W. J. H. / J. H. H.	W. J. H.	REVISED PER FCN H-1047 4333, 5706	0

REVISIONS		DATE	CHECK	REV	DATE	CHKD
1	10/10/74	W. J. H.	10/10/74	W. J. H.	10/10/74	W. J. H.
DRAWING STATUS						
U. S. ATOMIC ENERGY COMMISSION						
RESEARCH AND OPERATIONS OFFICE						
SAFETY ENGINEERING DEVELOPMENT LABORATORY						
Bechtel						
SAN FRANCISCO 94103						
PIPING & INSTRUMENT DIAGRAM						
MAIN HEAT TRANSPORT						
LOOP NO. 3						
SYS. 51						
FAST FLUX TEST FACILITY						
REV. NO. 405/491W/488C						
7004						
H-4-11087						