

PDR

WM-25

Cyprus Mines Corporation  
Uranium Division

1790 30th Street  
Suite 200  
Boulder, Colorado 80301  
Telephone 303) 447-0781

December 17, 1979

79-20.17-723

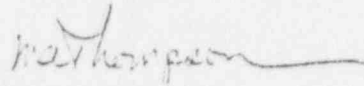
Ms. Madonna Krug  
Uranium Recovery Licensing Branch  
Nuclear Regulatory Commission  
Washington, D. C. 20555

Dear Ms. Krug:

RE: Radon Flux Measurements

As per your request, enclosed are the results of the Hansen Project radon flux measurements and information on the methods of measurement.

Very truly yours,



M. A. Thompson  
Principal Licensing Engineer

MAT:lrf

Encl.

cc: Mr. Richard Gamewell - CDH, w/o encl.



90019199

inf only

8001110420 **CYPRUS**

15011

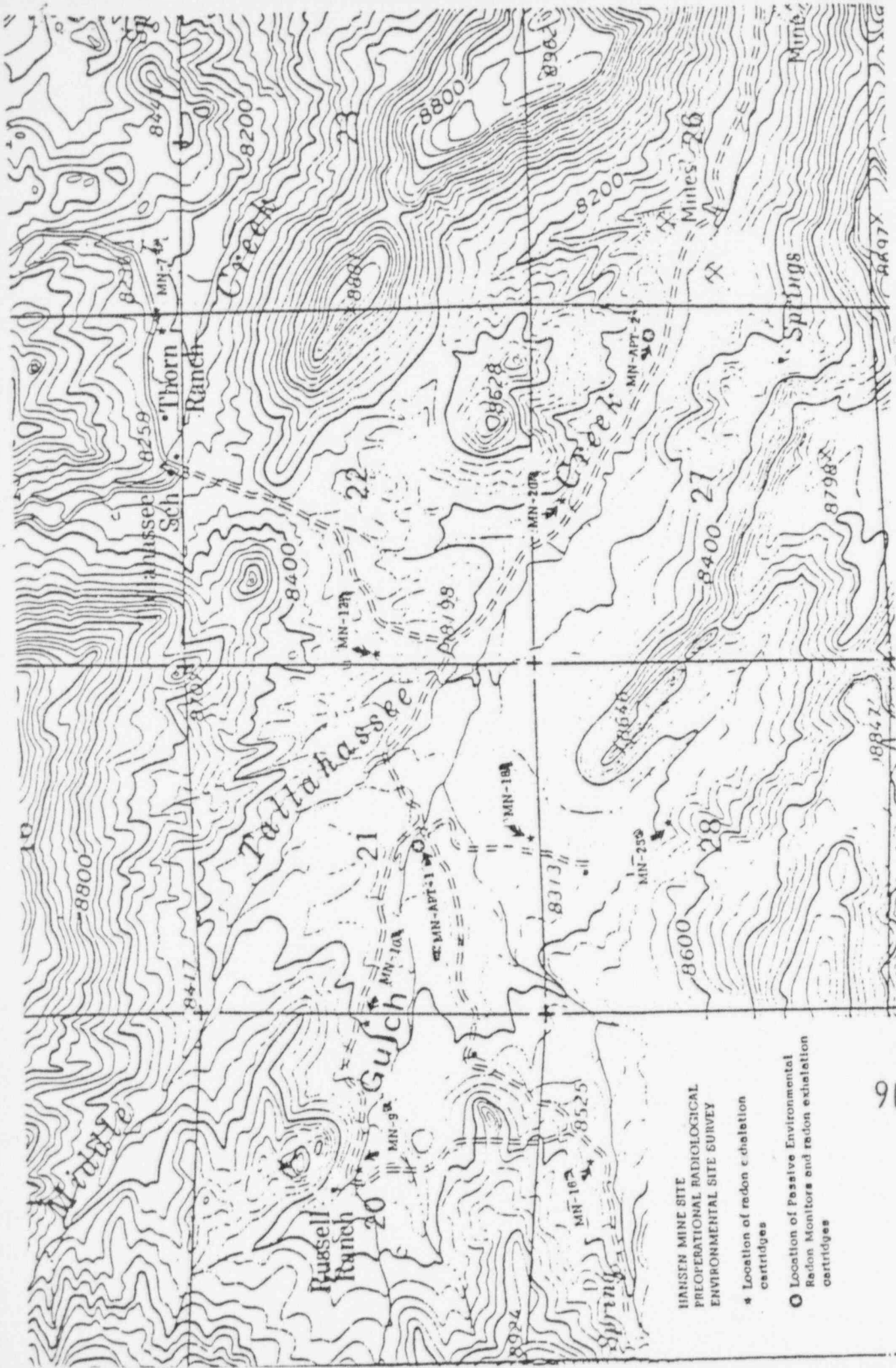
Received  
DEC 20 1979

Radon Exhalation Measurements in the Vicinity of the  
Hansen Mine and Mill Sites

<u>Location</u>	<u>pCi m<sup>-2</sup> min<sup>-1</sup> ± 2σ</u>		
	<u>June-1979</u>	<u>July-1979</u>	<u>September-1979</u>
ML-0	23 ± 3	30 ± 1.3	12 ± 7
ML-N-4	11 ± 3	42 ± 1.6	16 ± 13
ML-NE-2	4.9 ± 1.2	3.1 ± 1.3	5.8 ± 1.0
ML-NE-5	46 ± 0.7	20 ± 2	46 ± 14
ML-E-7	No Sample	21 ± 2	8.5 ± 9
ML-SE-10	63 ± 2	94 ± 3	25 ± 4
ML-SW-7	7.8 ± 2	15 ± 2	11 ± 1.4
ML-W-5	No Sample	21 ± 3	4.2 ± 3
ML-APT-1	4.9 ± 2	20 ± 3	2.7 ± 6
MN-7	14 ± 1.0	7.7 ± 3	12 ± 11
MN-9	23 ± 2	46 ± 4	12 ± 1.2
MN-10	15 ± 3	12 ± 4	21 ± 4
MN-12	5.4 ± 3	7.1 ± 4	No Sample
MN-16	10 ± 2	24 ± 4	No Sample
MN-18	No Sample	33 ± 5	22 ± 0.9
MN-20	73 ± 3	68 ± 5	47 ± 1.6
MN-25	No Sample	27 ± 8	No Sample
MN-APT-1	8.0 ± 3	26 ± 9	28 ± 4
MN-APT-2	37 ± 3	49 ± 9	27 ± 5

90019200

15011



HANSEN MINE SITE  
PREOPERATIONAL RADIOLOGICAL  
ENVIRONMENTAL SITE SURVEY

- \* Location of radon exhalation cartridges
- Location of Passive Environmental Radon Monitors and radon exhalation cartridges

90019201

POOR ORIGINAL

