

OPERATING DATA REPORT

DOCKET NO. 50-302
 DATE 5-2-85
 COMPLETED BY D. Graham
 TELEPHONE (904) 795-3802

OPERATING STATUS

1. Unit Name: Crystal River Unit 3
2. Reporting Period: 4/1/85 - 4/30/85
3. Licensed Thermal Power (MWt): 2544
4. Nameplate Rating (Gross MWe): 890
5. Design Electrical Rating (Net MWe): 825
6. Maximum Dependable Capacity (Gross MWe): 860
7. Maximum Dependable Capacity (Net MWe): 821
8. If Changes Occur in Capacity Ratings (Items Number 3 Through 7) Since Last Report, Give Reasons:

Notes

NA

9. Power Level To Which Restricted, If Any (Net MWe): NA
10. Reasons For Restrictions, If Any: NA

	This Month	Yr.-to-Date	Cumulative
11. Hours In Reporting Period	719	2879	71303
12. Number Of Hours Reactor Was Critical	0	1608.3	47524
13. Reactor Reserve Shutdown Hours	0	0	1280.3
14. Hours Generator On-Line	0	1606.5	46524.3
15. Unit Reserve Shutdown Hours	0	0	0
16. Gross Thermal Energy Generated (MWH)	0	2924173	104586058
17. Gross Electrical Energy Generated (MWH)	0	1014639	35741856
18. Net Electrical Energy Generated (MWH)	0	954730	33950741
19. Unit Service Factor	0%	55.8%	65.2%
20. Unit Availability Factor	0%	55.8%	65.2%
21. Unit Capacity Factor (Using MDC Net)	0%	40.4%	59.9%
22. Unit Capacity Factor (Using DER Net)	0%	40.2%	57.7%
23. Unit Forced Outage Rate	0%	0%	19.6%

24. Shutdowns Scheduled Over Next 6 Months (Type, Date, and Duration of Each):

Refueling outage which began 3/9/85 and is scheduled to last 20 weeks.

25. If Shut Down At End Of Report Period, Estimated Date of Startup: July 27, 1985

26. Units In Test Status (Prior to Commercial Operation):	Forecast	Achieved
INITIAL CRITICALITY	_____	<u>1/14/77</u>
INITIAL ELECTRICALITY	_____	<u>1/30/77</u>
COMMERCIAL OPERATION	_____	<u>3/13/77</u>

B505170651 B50430
 PDR ADOCK 05000302
 R PDR

IF24
 1/1

(9/77)

AVERAGE DAILY UNIT POWER LEVEL

DOCKET NO. 50-302

UNIT FLCRP-3

DATE 5-2-85

COMPLETED BY D. Graham

TELEPHONE (904) 795-3802

MONTH April

DAY AVERAGE DAILY POWER LEVEL
(MWe-Net)

1	0
2	
3	
4	
5	
6	
7	
8	
9	
10	
11	
12	
13	
14	
15	
16	

DAY AVERAGE DAILY POWER LEVEL
(MWe-Net)

17	0
18	
19	
20	
21	
22	
23	
24	
25	
26	
27	
28	
29	
30	
31	

INSTRUCTIONS

On this format, list the average daily unit power level in MWe-Net for each day in the reporting month. Compute to the nearest whole megawatt.

UNIT SHUTDOWNS AND POWER REDUCTIONS

DOCKET NO. 50-302
 UNIT NAME FLCRP-3
 DATE 5/2/85
 COMPLETED BY S.A. Stewart
 TELEPHONE (904) 795-3802

REPORT MONTH April 1985

No.	Date	Type ¹	Duration (Hours)	Reason ²	Method of Shutting Down Reactor ³	Licensee Event Report #	System Code ⁴	Component Code ⁵	Cause & Corrective Action to Prevent Recurrence
85-05	850308	S *	719.0	C	4	NA	NA	NA	Refueling Outage Continues
* Type on the March 1985 report should have been S and not the number 5.									

¹
 F: Forced
 S: Scheduled

²
 Reason:
 A-Equipment Failure (Explain)
 B-Maintenance or Test
 C-Refueling
 D-Regulatory Restriction
 E-Operator Training & License Examination
 F-Administrative
 G-Operational Error (Explain)
 H-Other (Explain)

³
 Method:
 1-Manual
 2-Manual Scram.
 3-Automatic Scram.
 4-Other (Explain)

⁴
 Exhibit G - Instructions for Preparation of Data Entry Sheets for Licensee Event Report (LER) File (NUREG-0161)

⁵
 Exhibit I - Same Source

MONTHLY OPERATIONAL SUMMARY STATEMENT

DOCKET NO. 50-302

UNIT FLCRP-3

DATE 5/2/85

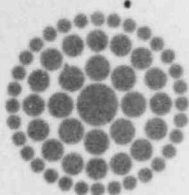
COMPLETED BY S.A. Stewart

TELEPHONE (904) 795-3802

MONTH April 1985

SUMMARY STATEMENT:

Crystal River 3 remains shutdown for refueling and maintenance.



**Florida
Power**
CORPORATION

May 7, 1985
3F0585-07

Mr. James M. Taylor, Director
Office of Inspection and Enforcement
U.S. Nuclear Regulatory Commission
Attn: Document Control Desk
Washington, DC 20555

Subject: Crystal River Unit 3
Docket No. 50-302
Operating License No. DPR-72
Monthly Operating Report

Dear Sir:

Attached are twelve (12) copies of the Crystal River Unit 3 April 1985 Monthly Operating Report. These reports are submitted in accordance with Technical Specification 6.9.1.6.

Sincerely,

G. R. Westafer
Manager, Nuclear Operations
Licensing and Fuel Management

AEF/feb

Attachments

cc: Dr. J. Nelson Grace
Regional Administrator, Region II
Office of Inspection & Enforcement
U.S. Nuclear Regulatory Commission
101 Marietta Street N.W., Suite 2900
Atlanta, GA 30323

IE24
11