



REACTOR FACILITY

May 7, 1985

Cecil O. Thomas, Chief
Standardization and Special Projects Branch
Division of Licensing
U.S. Nuclear Regulatory Commission
Washington, D.C. 20555

Dear Mr. Thomas:

In response to your letter dated June 22, 1984 RRF requests that the following changes be made to our previously submitted Emergency Plan.

Section 2.0: Definitions

Change the existing definition of Operations Boundary and Site Boundary with,

"OPERATIONS BOUNDARY - The area within the site boundary as shown in the floor plan of the Reed Reactor Facility is the operations boundary. When the door labeled 'A' is closed it consists of the area outlined in black. When the door labeled 'A' is open the operations boundary is expanded to include the area outlined in hatched lines. Within the operations boundary the reactor chief administrator has direct authority over all activities. The area within this boundary shall have prearranged evacuation procedures known to all personnel frequenting the area.

SITE BOUNDARY - The site boundary is that boundary, not necessarily having restricting barriers, including the adjoining chemistry building and extending 250 feet in every direction from the operations boundary. Within this area the reactor administrator may directly initiate emergency activities. The area within the site boundary may be frequented by persons unacquainted with reactor operations."

The definitions of onsite and offsite remain unchanged.

Section 3.0: Organization and Responsibilities

The agreements requested will be sent when received.

8505150089 850507
PDR ADOCK 05000288
F PDR

A045
1/1

Section 8.0: Emergency Facilities and Equipment

In section 8.2 remove the last sentence and replace it with,

"In addition, the following facilities are available to provide pertinent non-radiological information in the event of an emergency.

Monitor

- 1) High low water alarm
- 2) Pool Temperature Probe
- 3) Ventilation system
isolation cycle indicator
- 4) Secondary low pressure
alarm
- 5) Fire alarm pull station
- 6) Evacuation alarm
- 7) Primary water conduc-
tivity probes."

Alarm

- lights in west hall, roof,
and buzzer in console room.
- Buzzer on console.
- red lights in reactor and
console rooms. Both visible
from west hall.
- High pitched alarm in
reactor room. Audible outside
facility.
- Alarm bells throughout
adjacent Chemistry Building.
- Siren in reactor room. Light
in adjoining radiochemistry
laboratory.
- None

Section 9.0: Recovery

Replace existing paragraph with,

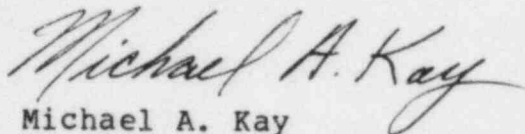
"Restoring the RRF to a safe operating condition after an emergency shall be the responsibility of the emergency coordinator. In the event that recovery procedures are necessary they shall be written by the emergency coordinator and reviewed by the reactor operations and reactor safety committees. Any operations necessary to restore the facility to operational status will be done by the emergency coordinator. The RRF Health Physics staff shall survey, decontaminate, and ascertain that the contamination, and ascertain that contamination and radiation

Cecil O. Thomas
May 7, 1985
Page 3

levels within the affected area are safe. RRF management shall assess resultant damages, direct repairs, review the emergency, and authorize continued operation of the reactor."

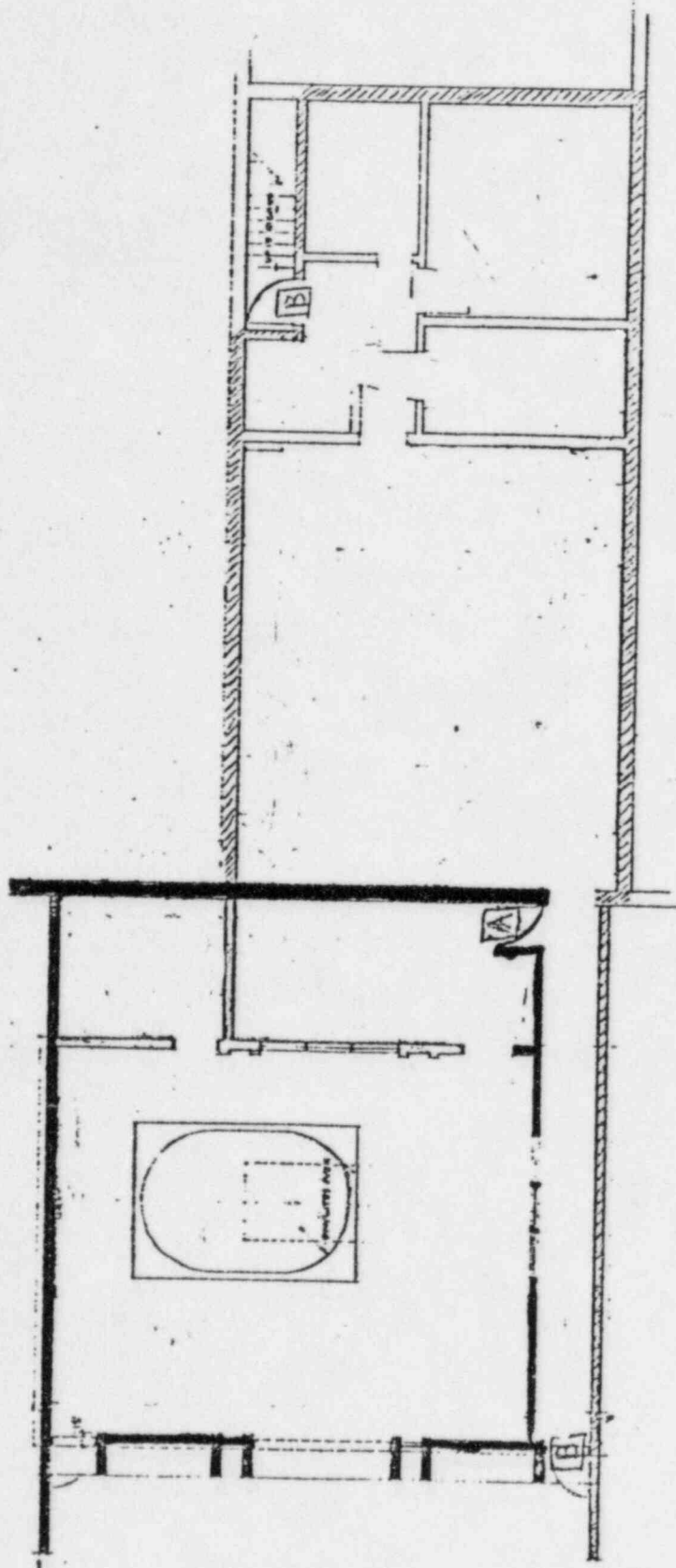
I believe that these changes are sufficient to meet the Commission's requirements with the exception of Section 3.0. Please keep me informed on further developments.

Sincerely,

A handwritten signature in cursive script that reads "Michael A. Kay". The signature is written in dark ink and is positioned above the printed name and title.

Michael A. Kay
Director, Reed Reactor Facility

vn
enc.



FLOOR PLAN

GRAPHIC SCALE

Denotes operations Boundary when Door A is closed
 Denotes operations Boundary when Door A is open

Floor Plan of Reactor Facility