

INTERIM CHANGE REQUEST

Plan Title/Rev. Unit 2 ISI Plan / Rev 1ICR No. ISI-2RI-02

Reference: Page

Table

Relief Request, and/or

Component:

Sections 4.1 & 4.2

App A & App B

Reason for Change:

Implementation of 2RFO2 ISI outage plan has identified: several examination items that have had calibration block changes; two examination items that required rescheduling and one relief request. The changes required maintain the ISI plan compliance with ASME XI requirements for sample percentages, schedules and examination methods.

Proposed Revision:

- Replace existing section 4.1 and 4.2 pages 6, 37, 40, 43, 46, 52, 61, 69, 70, 71, 74, and 119 with the attached corresponding marked up pages
- Replace App. A pg 2 of 2 with the attached App A pg 2 of 2
- Add Relief Request B-3 to App. A
- Replace App B pg 2 with the attached App B pg 2

J. J. Bonin
Initiator

Meck codes & stds
Department

4.4.96
Date

Approved: ☒ Yes ☐ No

FB May BSM
Codes and Standards Supervisor

4.14.96
Date

Reason for Disapproval:

9608270450 960823
PDR ADOCK 05000446
Q PDR

UNIT 2 ASME SECTION XI INSERVICE PRESSURE
TEST LINE LIST
TABLE 9

Line/Component No.	Flow Diagram No.	ASME item	Exam CAT	Test Freq.	Type Test	Exam Method	Test Pressure	Test Temp.	Notes/Comments	REC NO.
=====	=====	=====	=====	=====	=====	=====	=====	=====	=====	=====
** CHEMICAL & VOLUME CONTROL (CS)										
3/4-CS-2-457-151R-2	M2-0254	C7.30 C7.40	C-H	P I	SIT SPT	VT-2	Po TABLE 4	To TABLE 5		1157
2-CS-2-482-2501R-2	M2-0254 M2-0255	C7.30 C7.40	C-H	P I	SIT SHT	VT-2	Po TABLE 4	To TABLE 5		1158
2-CS-2-483-2501R-2	M2-0254	C7.30 C7.40	C-H	P I	SIT SHT	VT-2	Po TABLE 4	To TABLE 5		1159
2-CS-2-546-601R-2	M2-0253	C7.30 C7.40	C-H	P I	SIT SHT	VT-2	Po TABLE 4	To TABLE 5		1161
3-CS-2-547-2501R-2	M2-0253 M2-0255	C7.30 C7.40	C-H	P I	SIT SHT	VT-2	Po TABLE 4	To TABLE 5		1162
4-CS-2-549-601R-2	M2-0256-A	C7.30 C7.40	C-H	P I	SIT SHT	VT-2	Po TABLE 4	To TABLE 5	(9)	1163
4-CS-2-550-601R-2	M2-0256-A	C7.30 C7.40	C-H	P I	SIT SHT	VT-2	Po TABLE 4	To TABLE 5	(9)	1164
1 1/2-CS-2-554-2501R-2	M2-0255-1	C7.30 C7.40	C-H	P I	SIT SHT	VT-2	Po TABLE 4	To TABLE 5		1165
1 1/2-CS-2-555-2501R-2	M2-0255-1	C7.30 C7.40	C-H	P I	SIT SHT	VT-2	Po TABLE 4	To TABLE 5		1166
1 1/2-CS-2-556-2501R-2	M2-0255-1	C7.30 C7.40	C-H	P I	SIT SHT	VT-2	Po TABLE 4	To TABLE 5		1167
1 1/2-CS-2-557-2501R-2	M2-0255-1	C7.30 C7.40	C-H	P I	SIT SHT	VT-2	Po TABLE 4	To TABLE 5		1168
3-CS-2-564-151R-3	M1-0257	D1.10 D1.10	D-A	P I	SIT SHT	VT-2	Po TABLE 4	To TABLE 5		1169

ICR
3

UNIT 2 ASME SECTION XI INSERVICE PRESSURE
TEST LINE LIST
TABLE 9

Line/Component No. =====	Flow Diagram No. =====	ASME Item =====	Exam CAT =====	Test Freq. =====	Type Test =====	Exam Method =====	Test Pressure =====	Test Temp. =====	Notes/Comments =====	REC NO. =====
** CHEMICAL & VOLUME CONTROL (CS)										
3-CS-2-903-2501R-2	M2-0253-A	C7.30 C7.40	C-H	P I	SIT SHT	VT-2	Po TABLE 4	To TABLE 5		1243
3-CS-2-904-601R-2	M2-0253-A	C7.30 C7.40	C-H	P I	SIT SHT	VT-2	Po TABLE 4	To TABLE 5		1244
3-CS-2-905-2501R-2	M2-0253-A	C7.30 C7.40	C-H	P I	SIT SHT	VT-2	Po TABLE 4	To TABLE 5		1245
3-CS-2-906-601R-2	M2-0253-A	C7.30 C7.40	C-H	P I	SIT SHT	VT-2	Po TABLE 4	To TABLE 5		1246
3-CS-2-907-2501R-2	M2-0253-A	C7.30 C7.40	C-H	P I	SIT SHT	VT-2	Po TABLE 4	To TABLE 5		1247
3-CS-2-908-2501R-2	M2-0253-A	C7.30 C7.40	C-H	P I	SIT SHT	VT-2	Po TABLE 4	To TABLE 5		1248
3-CS-2-910-2501R-2	M2-0256-A	C7.30 C7.40	C-H	P I	SIT SHT	VT-2	Po TABLE 4	To TABLE 5	(9)	1249
3-CS-2-911-601R-2	M2-0256-A	C7.30 C7.40	C-H	P I	SIT SHT	VT-2	Po TABLE 4	To TABLE 5	(9)	1250
3-CS-2-912-2501R-2	M2-0256-A	C7.30 C7.40	C-H	P I	SIT SHT	VT-2	Po TABLE 4	To TABLE 5	(9)	1251
3-CS-2-913-601R-2	M2-0256-A	C7.30 C7.40	C-H	P I	SIT SHT	VT-2	Po TABLE 4	To TABLE 5	(9)	1252
1-CS-2-916-151R-3	M2-0255-2	D1.10 D1.10	D-A	P I	SIT SHT	VT-2	Po TABLE 4	To TABLE 5		1253
2-CS-2-917-151R-3	M2-0255-2	D1.10 D1.10	D-A	P I	SIT SHT	VT-2	Po TABLE 4	To TABLE 5		1254

ICK
3

NOTES:

1. Storage tank or extension of storage tank.
2. Containment isolation piping.
3. Demonstration of an open flow path test shall be performed in lieu of the system hydrostatic test.
4. Confirmation of adequate flow during system operation shall be performed in lieu of system hydrostatic test.
5. The Repair/Replacement hydrostatic test for BRP-CS-2-AB-088, Sht. 1, welds FW 40 and FW 41 and BRP-CS-2-AB-091, Sht. 1, welds FW 2A and FW 3A are deferred until these regularly scheduled system hydrostatic test as permitted by Code Case N-416. Reference Work Order 1 94-073575-00.
6. The Repair/Replacement hydrostatic test for BRP-FW-2-SB-004B, Sht. 1, weld 8 is deferred until this regularly scheduled system hydrostatic test as permitted by Code Case N-416. Reference Work Order 1-93-060873-00.
7. Deleted
8. The Repair/Replacement hydrostatic test for BRP-CT-2-SB-027, Sht. 1, welds 17 and 18A and for BRP-CT-2-SB-011, Sht. 1 weld 3A is deferred until this regularly scheduled system hydrostatic test as permitted by Code Case N-416. Reference Work Order 1-93-052173-00 and DCN 6740 Rev. 0.
9. This line is located in a portion of the system that is not required to operate or support the safety system function. However, if for convenience or for any other reason it is desired to operate this portion of the system it is a condition of clearance 2-94-4785 that a system functional test be performed prior to declaring this line operable.

ICR
3

<u>ICR NO.</u>	<u>AFFECTED PAGE(S)</u>	<u>DESCRIPTION OF CHANGE</u>
ISI-2R1-01	Section 2.0 RHR dwg., sht. 1 & 2 Section 5.0 Table 9 page 115	Incorporate DM 94-45
ISI-2R1-02	Section 4.1 pg's 6, 37, 40, 43, 46 52, 61, 69, 70, 71, 74 Section 4.2 pg. 119 App. A pg. 2 App. B pg. 2	Change cal blocks, reschedule exams add Relief Request
ISI-2R1-03	Section 2 CS dwg. Sht. 12 of 13 Section 5, Table 9 pgs 25, 31 and notes App. B pg. 2	Replace pages

FROM
CS SYSTEM
SHEET 3

3-CS-2-013-601R-2

1/4

2

1/4

1/4-6

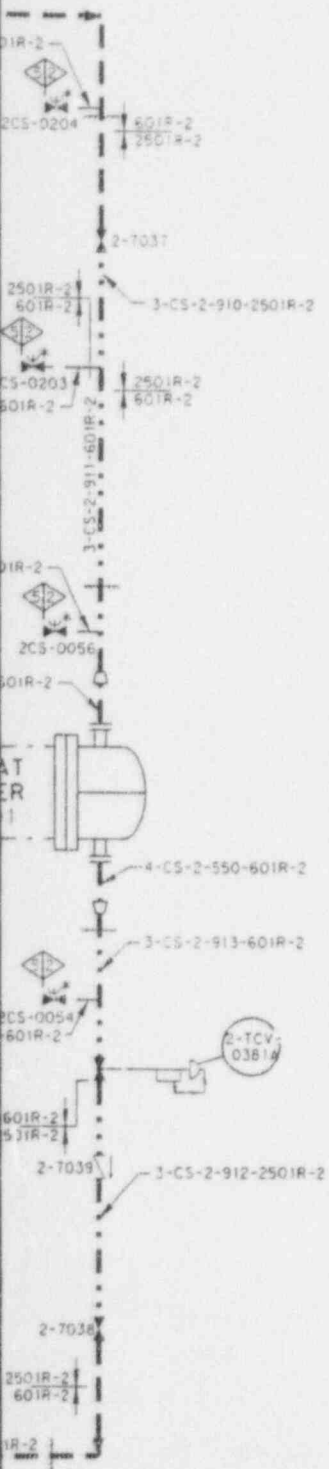
4-CS-2-549-

LETDOWN REHE
HEAT EXCHANG
TCX-TRAHLR-C

1/4

TO
CS SYSTEM
SHEET 3

3-CS-2-014-50



ANSTEC
APERTURE
CARD

Also Available on
Aperture Card

9608270450-01

ILLUSTRATIVE USE ONLY THIS DIAGRAM DEVELOPED FROM FLOW DIAGRAM M2-0256 SH A	
TU ELECTRIC CPSES UNIT 2	
INSERVICE INSPECTION BOUNDARY DIAGRAM	
CHEMICAL AND VOLUME CONTROL SYSTEM SHEET 12 OF 13	
REV 2	APPROVED: <i>golBoni</i> 5/3/96

DATE: 02/05/96

COMANCHE PEAK UNIT 2
INSERVICE INSPECTION PLAN
CLASS 1 SCHED/COMPL COMPONENTS

PAGE: 6

SUMMARY NUMBER	EXAMINATION AREA IDENTIFICATION	INSPECTION INTERVAL		PLAN STATUS			PRESERVICE YEAR	INSTRUCTIONS **CALIBRATION BLOCK**
		ASME SEC. XI CATGY NDE ITEM NO METH		FIRST PERIOD	SECOND PERIOD	THIRD PERIOD		
				1 2	1 2	1 2		

	REACTOR COOLANT TCX-RCPCRV-01							
002700	TCX-1-1100A-LIG RV FLANGE LIGAMENTS (1/54) R157 B30RB	B-G-1 B6.40	UT	1 - X	- X	- X	83	1/3 PER PERIOD. TDLR VERIFICATION BOUNDARY. **RV-5**, RV-3
002800	TCX-1-1200-INT RV INTERNALS (ACCESS DURING REFUELING) R157 B32RB	B-N-1 B13.10	VT-3	1 C -	X -	- X	82	TDLR VERIFICATION BOUNDARY. ICR-2
002805	TCX-1-1200-CSS RV CORE SUPPORT STUCT-NO ACCESS @ REFUEL	B-N-3 B13.70	VT-3	1 - -	- -	- X	82	TDLR VERIFICATION BOUNDARY.
003100	TCX-1-1300-1 RV CLOSURE HEAD TO FLANGE WELD R155R832RB	B-A B1.40	UT MT	1 C -	X -	- X	83	1/3 PER PERIOD. TDLR VERIFICATION BOUNDARY. **TBX-29**
003200	TCX-1-1300-2 RV CLOSURE HEAD RING TO DISC WELD R155R832RB	B-A B1.21	UT	1 C -	X -	- X	83	1/3 PER PERIOD. TDLR VERIFICATION BOUNDARY. **TBX-29**
003300	TCX-1-1300-3 RV CLOSURE HEAD MERIDIONAL WELD R157R832RB	B-A B1.22	UT	1 - -	X -	- -	83	TDLR VERIFICATION BOUNDARY. **TBX-29**
003400	TCX-1-1300-4 RV CLOSURE HEAD MERIDIONAL WELD	B-A B1.22	UT	1 - -	- -	- X	83	TDLR VERIFICATION BOUNDARY. **TBX-29**

INSPECTION INTERVAL				PLAN STATUS			PRESERVICE YEAR	INSTRUCTIONS **CALIBRATION BLOCK**
SUMMARY EXAMINATION AREA NUMBER IDENTIFICATION		ASME SEC. XI CATGY NDE ITEM NO METH	FIRST PERIOD	SECOND PERIOD	THIRD PERIOD	O U T A G E		
		1 2	1 2	1 2				

<u>REACTOR COOLANT 29-RC-2-001-WEST-1</u>								
012200	TCX-1-4100-1 RPV NOZZLE TO SAFE END R157 827RB	B-F B5.10	UT PT	1 - X	- -	- -	92	TDLR VERIFICATION BOUNDARY. **TBX-57,RV-6**
012300	TCX-1-4100-2 SAFE END TO PIPE R157 827RB	B-J B9.11	UT PT	1 - X	- -	- -	92	TDLR VERIFICATION BOUNDARY. <u>**TBX-57**, RV-6</u> ICA-2
012500	TCX-1-4100-4 REDUCING ELBOW TO SG NOZZLE 827RB	B-F B5.70	UT PT	1 - -	- -	X -	92	TDLR VERIFICATION BOUNDARY. **TBX-57**
<u>REACTOR COOLANT 31-RC-2-002-WEST-1</u>								
012600	TCX-1-4100-5 SG NOZZLE TO ELBOW 829RB	B-F B5.70	UT PT	1 - -	- -	X -	92	TDLR VERIFICATION BOUNDARY. **TBX-57**
<u>REACTOR COOLANT 27.5-RC-2-003-WEST-1</u>								
013500	TCX-1-4100-14 SAFE END TO RV NOZZLE 827RB	B-F B5.10	UT PT	1 - -	- -	- X	92	TDLR VERIFICATION BOUNDARY. **TBX-57,RV-6**
<u>REACTOR COOLANT 12-RC-2-007-2501R-1</u>								
014400	TCX-1-4101-2 PIPE TO ELBOW R1541823RB	B-J B9.11	UT PT	1 C -	- -	- -	92	 **TBX-12**

DATE: 02/05/96

COMANCHE PEAK UNIT 2
INSERVICE INSPECTION PLAN
CLASS 1 SCHED/COMPL COMPONENTS

PAGE: 40

SUMMARY EXAMINATION AREA NUMBER IDENTIFICATION	INSPECTION INTERVAL ASME SEC. XI CATGY NDE ITEM NO METH	PLAN STATUS			PRESERVICE YEAR	INSTRUCTIONS **CALIBRATION BLOCK**
		FIRST PERIOD	SECOND PERIOD	THIRD PERIOD		
		1 2	1 2	1 2		

SAFETY INJECTION 6-SI-2-089-2501R-1

017500	TCX-1-4103-4 PIPE TO MOMENT RESTRAINT R154A82ORB	B-J B9.11	UT PT	1 C -	- -	- -	92
--------	--	--------------	----------	-------	-----	-----	----

TBX-5

017600	TCX-1-4103-5 MOMENT RESTRAINT TO PIPE R154182ORB	B-J B9.11	UT PT	1 C -	- -	- -	92
--------	--	--------------	----------	-------	-----	-----	----

TBX-5

SAFETY INJECTION 2-SI-2-063-2501R-1

018500	TCX-1-4103-14 SOCKET TO PIPE R154A82ORB	B-J B9.32	PT	1 C -	- -	- -	92
--------	---	--------------	----	-------	-----	-----	----

018600	TCX-1-4103-15 PIPE TO SOCKET R154A82ORB	B-J B9.40	PT	1 C -	- -	- -	92
--------	---	--------------	----	-------	-----	-----	----

9700	TCX-1-4103-16 PIPE TO VALVE R154A82ORB	B-J B9.40	PT	1 C -	- -	- -	92
------	--	--------------	----	-------	-----	-----	----

REACTOR COOLANT 6-SI-2-008-2501R-1

018800	TCX-1-4104-1 PIPE TO WELDOLET R154182ORB	B-J B9.31	UT PT	1 - X	- -	- -	92
--------	--	--------------	----------	-------	-----	-----	----

~~**TBX-5**~~ SSCB-1

ICR-2

DATE: 02/05/96

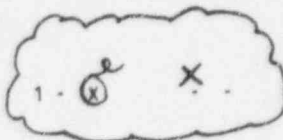
COMANCHE PEAK UNIT 2
INSERVICE INSPECTION PLAN
CLASS 1 SCHED/COMPL COMPONENTS

PAGE: 43

SUMMARY EXAMINATION AREA NUMBER IDENTIFICATION	INSPECTION INTERVAL	PLAN STATUS			PRESERVICE YEAR
		FIRST PERIOD	SECOND PERIOD	THIRD PERIOD	
	ASME SEC. XI CATGY NDE ITEM NO METH	1 2	1 2	1 2	INSTRUCTIONS **CALIBRATION BLOCK**

REACTOR COOLANT 2-RC-2-015-2501R-1

024200	TCX-1-4109-4 PIPE TO ELBOW R1541813RB	B-J B9.40	PT	1 - X	- -	- -	92
024300	TCX-1-4109-5 ELBOW TO PIPE R1541813RB	B-J B9.40	PT	1 - X	- -	- -	92
024400	TCX-1-4109-6 PIPE TO ELBOW R1541813RB	B-J B9.40	PT	1 - X	- -	- -	92
024500	TCX-1-4109-7 ELBOW TO PIPE R1541813RB	B-J B9.40	PT	1 - X	- -	- -	92
024600	TCX-1-4109-8 PIPE TO TEE R1541813RB	B-J B9.40	PT	1 - X	- -	- -	92
024700	TCX-1-4109-9 TEE TO REDUCER R1541813RB	B-J B9.40	PT	1 - X	- -	- -	92
024800	TCX-1-4109-10 TEE TO PIPE R1541813RB	B-J B9.40	PT	1 - X	- -	- -	92



ICR-2

DATE: 02/05/96

COMANCHE PEAK UNIT 2
INSERVICE INSPECTION PLAN
CLASS 1 SCHED/COMPL COMPONENTS

PAGE: 46

SUMMARY EXAMINATION AREA NUMBER IDENTIFICATION		INSPECTION INTERVAL ASME SEC. XI CATGY NDE ITEM NO METH	PLAN STATUS						PRESERVICE YEAR	INSTRUCTIONS **CALIBRATION BLOCK**
			FIRST PERIOD		SECOND PERIOD		THIRD PERIOD			
			1	2	1	2	1	2		

<u>REACTOR COOLANT 29-RC-2-023-WEST-1</u>										
027700	TCX-1-4200-2 SAFE END TO PIPE R157 827RB	B-J B9.11	UT PT	1	X	-	-	-	-	92 TDLR VERIFICATION BOUNDARY. **TBX-57**, RV-6
027900	TCX-1-4200-4 REDUCING ELBOW TO SG NOZZLE 827RB	B-F B5.70	UT PT	1	-	X	-	-	-	92 TDLR VERIFICATION BOUNDARY. <i>ICR</i> **TBX-57**
<u>REACTOR COOLANT 31-RC-2-024-WEST-1</u>										
028000	TCX-1-4200-5 SG NOZZLE TO ELBOW 829RB	B-F B5.70	UT PT	1	-	X	-	-	-	92 TDLR VERIFICATION BOUNDARY. **TBX-57**
<u>REACTOR COOLANT 27.5-RC-2-025-WEST-1</u>										
028900	TCX-1-4200-14 SAFE END TO RV NOZZLE 827RB	B-F B5.10	UT PT	1	-	-	-	-	X	92 TDLR VERIFICATION BOUNDARY. **TBX-57, RV-6**
<u>REACTOR COOLANT 10-RC-2-037-2501R-1</u>										
030100	TCX-1-4201-7 PIPE TO VALVE 831RB	B-J B9.11	UT PT	1	-	X	-	-	-	92 **TBX-9**
<u>SAFETY INJECTION 10-SI-2-180-2501R-1</u>										
030200	TCX-1-4201-8 VALVE TO PIPE 831RB	B-J B9.11	UT PT	1	-	X	-	-	-	92 **TBX-9**

SUMMARY EXAMINATION AREA NUMBER IDENTIFICATION	INSPECTION INTERVAL		PLAN STATUS			PRESERVICE YEAR	INSTRUCTIONS **CALIBRATION BLOCK**
	ASME SEC. XI CATGY NDE ITEM NO METH		FIRST PERIOD	SECOND PERIOD	THIRD PERIOD		
			1 2	1 2	1 2		

CHEMICAL AND VOLUME CONTROL 2-CS-2-105-2501R-1

040200	TCX-1-4207-4 REDUCER TO ELBOW 830RB	B-J B9.21	PT	1 - -	X - -	92	
040300	TCX-1-4207-5 ELBOW TO PIPE 830RB	B-J B9.21	PT	1 - -	X - -	92	
040400	TCX-1-4207-6 PIPE TO TEE 826RB	B-J B9.21	PT	1 - -	X - -	92	

CHEMICAL AND VOLUME CONTROL 1.5-CS-2-249-2501R-1

040850	TCX-1-4207-FLG1 FLANGE BOLTING 830RB	B-G-2 B7.50	VT-1	1 - -	X - -	92	
--------	--	----------------	------	-------	-------	----	--

REACTOR COOLANT 29-RC-2-040-WEST-1

040900	TCX-1-4300-1 RPV NOZZLE TO SAFE END R157 827RB	B-F B5.10	UT PT	1 - X	- - -	92	TDLR VERIFICATION BOUNDARY. **TBX-57,RV-6**
041000	TCX-1-4300-2 SAFE END TO PIPE R157 827RB	B-J B9.11	UT PT	1 - X	- - -	92	TDLR VERIFICATION BOUNDARY. **TBX-57**, RV-6

SUMMARY NUMBER	EXAMINATION AREA IDENTIFICATION	INSPECTION INTERVAL		PLAN STATUS			PRESERVICE YEAR	INSTRUCTIONS **CALIBRATION BLOCK**
		ASME SEC. XI CATGY	NDE ITEM NO METH	FIRST PERIOD	SECOND PERIOD	THIRD PERIOD		
				1 2	1 2	1 2		
<u>CHEMICAL AND VOLUME CONTROL 1.5-CS-2-243-2501R-1</u>								
059150	TCX-1-4308-FLG1 FLANGE BOLTING 830RB	B-G-2 87.50	VT-1	1 - -	X - -	- - -	92	
<u>REACTOR COOLANT 29-RC-2-058-WEST-1</u>								
059200	TCX-1-4400-1 RPV NOZZLE TO SAFE END R157 827RB	B-F 85.10	UT PT	1 - X	- - -	- - -	92	TDLR VERIFICATION BOUNDARY. **TBX-57,RV-6**
059300	TCX-1-4400-2 SAFE END TO PIPE R157 827RB	B-J 89.11	UT PT	1 - X	- - -	- - -	92	TDLR VERIFICATION BOUNDARY. <u>**TBX-57**, RV-6</u>
059500	TCX-1-4400-4 REDUCING ELBOW TO SG NOZZLE 827RB	B-F 85.70	UT PT	1 - -	- - -	- X	92	TDLR VERIFICATION BOUNDARY. **TBX-57**
<u>REACTOR COOLANT 31-RC-2-059-WEST-1</u>								
059600	TCX-1-4400-5 SG NOZZLE TO ELBOW 829RB	B-F 85.70	UT PT	1 - -	- - -	- X	92	TDLR VERIFICATION BOUNDARY. **TBX-57**
<u>REACTOR COOLANT 27.5-RC-2-060-WEST-1</u>								
060500	TCX-1-4400-14 SAFE END TO RPV NOZZLE 827RB	B-F 85.10	UT PT	1 - -	- - -	- X	92	TDLR VERIFICATION BOUNDARY. **TBX-2 ,RV-6**

ICR-2

PAGE : 69

SUMMARY NUMBER	EXAMINATION AREA IDENTIFICATION	INSPECTION INTERVAL		PLAN STATUS			PRESERVICE YEAR	INSTRUCTIONS **CALIBRATION BLOCK**	
		ASME SEC. XI CATGY ITEM NO	NDE METH	FIRST PERIOD	SECOND PERIOD	THIRD PERIOD			
									O U T A G E
				1	2	1	2	1	2

REACTOR COOLANT 14-RC-2-135-2501R-1										
075100	TCX-1-4500-2 PIPE TO PIPE 832RB	B-J B9.11	UT PT	1	-	-	-	X	92	TDLR VERIFICATION BOUNDARY. **TBX-19**
075200	TCX-1-4500-3 PIPE TO PIPE 832RB	B-J B9.11	UT PT	1	-	-	-	X	92	TDLR VERIFICATION BOUNDARY. **TBX-13**
075400	TCX-1-4500-5 PIPE TO SAFE END 854RB	B-J B9.11	UT PT	1	-	-	X	-	92	TDLR VERIFICATION BOUNDARY. **TBX-19**
075500	TCX-1-4500-6 SAFE END TO PRESSURIZER NOZZLE 854RB	B-F B5.40	UT PT	1	-	-	X	-	92	TDLR VERIFICATION BOUNDARY. **TBX-19**
075510	TCX-1-4500-7 PIPE TO PIPE 832RB	B-J B9.11	UT PT	1	-	-	-	X	92	TDLR VERIFICATION BOUNDARY. **TBX-19**
REACTOR COOLANT 6-RC-2-096-2501R-1										
075600	TCX-1-4501-1 PRESSURIZER NOZZLE TO SAFE END R161A905RB	B-F B5.40	UT PT	1	-	X	-	-	92	**TBX-18** DMCB-1
075700	TCX-1-4501-2 SAFE END TO PIPE R161A905RB	B-J B9.11	UT PT	1	-	X	-	-	92	ICR-2 **TBX-5**

DATE: 02/05/96

COMANCHE PEAK UNIT 2
INSERVICE INSPECTION PLAN
CLASS 1 SCHED/COMPL COMPONENTS

PAGE: 70

SUMMARY NUMBER	EXAMINATION AREA IDENTIFICATION	INSPECTION INTERVAL		PLAN STATUS			PRESERVICE YEAR	INSTRUCTIONS **CALIBRATION BLOCK**
		ASME SEC. XI CATGY	NDE ITEM NO METH	FIRST PERIOD	SECOND PERIOD	THIRD PERIOD		
				1 2	1 2	1 2		

REACTOR COOLANT 6-RC-2-096-2501R-1

076600 TCX-1-4501-11 B-J UT 1 - X - - - 92
PIPE TO VALVE (FLANGED) B9.11 PT
R161A905RB

TBX-5

076650 TCX-1-4501-FLG 1 B-G-2 VT-1 1 - X - - - 92
2-B010A FLANGE BOLTING B7.50
R161A905RB

REACTOR COOLANT 6-RC-2-098-2501R-1

076700 TCX-1-4502-1 B-F UT 1 - X - - - 92
PRESSURIZER NOZZLE TO SAFE END B5.40 PT
R161A905RB

TBX-18 DMLB-1

ICR-2

076800 TCX-1-4502-2 B-J UT 1 - X - - - 92
SAFE END TO PIPE B9.11 PT
R161A905RB

TBX-5

07700 TCX-1-4502-11 B-J UT 1 - X - - - 92
PIPE TO VALVE (FLANGED) B9.11 PT
R161A907RB

TBX-5

077750 TCX-1-4502-FLG 1 B-G-2 VT-1 1 - X - - - 92
2-B010B FLANGE BOLTING B7.50
R161A907RB

REACTOR COOLANT 6-RC-2-100-2501R-1

077800 TCX-1-4503-1 B-F UT 1 - X - - - 92
PRESSURIZER NOZZLE TO SAFE END B5.40 PT
R161A905RB

TBX-18 DMLB-1

ICR-2

SUMMARY EXAMINATION AREA NUMBER IDENTIFICATION	INSPECTION INTERVAL		PLAN STATUS			PRESERVICE YEAR	INSTRUCTIONS **CALIBRATION BLOCK**
	ASME SEC. XI CATGY NDE ITEM NO METH		FIRST PERIOD	SECOND PERIOD	THIRD PERIOD		
			- - - - -	O U T A G E	- - - - -		
			1 2	1 2	1 2		

REACTOR COOLANT 6-RC-2-100-2501R-1

077900 TCX-1-4503-2 B-J UT 1 - X - - - - 92
SAFE END TO PIPE B9.11 PT
R161A905RB

TBX-5

078800 TCX-1-4503-11 B-J UT 1 - X - - - - 92
PIPE TO VALVE (FLANGED) B9.11 PT
R161A907RB

TBX-5

078850 TCX-1-4503-FLG 1 B-G-2 VT-1 1 - X - - - - 92
2-8010C FLANGE BOLTING B7.50
R161A907RB

REACTOR COOLANT 6-RC-2-108-2501R-1

078900 TCX-1-4504-1 B-F UT 1 - X - - - - 92 TDLR VERIFICATION BOUNDARY.
PRESSURIZER NOZZLE TO SAFE END B5.40 PT
R161A905RB

TBX-5 DMCB-1

TLR-2

079000 TCX-1-4504-2 B-J UT 1 - X - - - - 92 TDLR VERIFICATION BOUNDARY.
SAFE END TO PIPE B9.11 PT
R161A905RB

TBX-5

REACTOR COOLANT 3-RC-2-111-2501R-1

079800 TCX-1-4504-10 B-J PT 1 - - - - - X 92 TDLR VERIFICATION BOUNDARY.
VALVE TO PIPE B9.21
907RB

SUMMARY NUMBER	EXAMINATION AREA IDENTIFICATION	INSPECTION INTERVAL		PLAN STATUS			PRESERVICE YEAR	INSTRUCTIONS **CALIBRATION BLOCK**
		ASME SEC. XI CATGY	NDE ITEM NO METH	FIRST PERIOD	SECOND PERIOD	THIRD PERIOD		
				1 2	1 2	1 2		

REACTOR COOLANT 4-RC-2-091-2501R-1

085900	TCX-1-4506-20	B-J	UT	1 - X	- -	- -	92
	PIPE TO PIPE	B9.11	PT				
	R161A913RB						

TBX-4

086000	TCX-1-4506-21	B-J	UT	1 - X	- -	- -	92
	PIPE TO SAFE END	B9.11	PT				
	R161A906RB						

TBX-4

086100	TCX-1-4506-22	B-F	UT	1 - X	- -	- -	92
	SAFE END TO PRESSURIZER NOZZLE	B5.40	PT				
	R161A906RB						

TBX-5 DMCB-1

REACTOR COOLANT 4-RC-2-162-2501R-1

086600	TCX-1-4506-27	B-J	UT	1 - -	- -	- X	92
	PIPE TO PIPE	B9.11	PT				
	909RB						

TBX-4

REACTOR COOLANT 2-RC-2-132-2501R-1

086700	TCX-1-4507-1	B-J	PT	1 - -	- -	- X	92
	PIPE TO WELDOLET	B9.32					
	913RB						

087100	TCX-1-4507-5	B-J	PT	1 - -	- -	- X	92
	PIPE TO VALVE	B9.40					
	898RB						

ICR-2

DATE: 02/05/96

COMANCHE PEAK UNIT 2
INSERVICE INSPECTION PLAN
CLASS 2 SCHED/COMPL COMPONENTS

PAGE: 119

SUMMARY EXAMINATION AREA NUMBER IDENTIFICATION	INSPECTION INTERVAL ASME SEC. XI CATGY NDE ITEM NO METH	PLAN STATUS			PRESERVICE YEAR	INSTRUCTIONS **CALIBRATION BLOCK**
		FIRST PERIOD	SECOND PERIOD	THIRD PERIOD		
		1 2	1 2	1 2		

CHEMICAL AND VOLUME CONTROL TCX-CSAPCH-01

313400	TCX-2-3110-2WS CHG PUMP 01 WELDED SUPPORT	C-C C3.10	PT	1 - -	- -	X -	92
313500	TCX-2-3110-3WS CHG PUMP 01 WELDED SUPPORT	C-C C3.10	PT	1 - -	- -	X -	92
313600	TCX-2-3110-4WS CHG PUMP 01 WELDED SUPPORT	C-C C3.10	PT	1 - -	- -	X -	92

SAFETY INJECTION TCX-SIAPS1-02

314000	TCX-2-3140-2B1-32 B1 THRU B32 SI PUMP 02 STUDS	C-D C4.30	UT	1 - X	(X) -	- -	92
--------	---	--------------	----	-------	-------	-----	----

TBX-53

ICR-2

FEEDWATER 18-FW-2-035-2003-2

500700	TCX-2-2202-FW077 VALVE BODY WELD 2FW-0077 (ALT 2-HV-2135) R100A856SB	C-G C6.20	MT	1 C -	- -	- -	92	TDLR VERIFICATION BOUNDARY. DWG. 75830
--------	---	--------------	----	-------	-----	-----	----	---

FEEDWATER 6-FW-2-092-2003-2

501000	TCX-2-2204-FW193 VALVE BODY WELD 2FW-0193 R100C863SB	C-G C6.20	MT	1 - X	- -	- -	92	DWG. 454KAB1-001
--------	--	--------------	----	-------	-----	-----	----	------------------

APPENDIX A
INDEX OF RELIEF REQUESTS

<u>RR#</u>	<u>SUBJECT</u>	<u>STATUS</u>
A-1	Pressure Retaining Bolted Connections	Approved NRR 9044 (6/16/95)
A-2 Rev. 1	Insulated Bolted Connections	Approved NRR 9044 (6/16/95)
B-1	Reactor Vessel Closure Head Welds	Approved NRR 9156 (12/28/95)
B-2	Circumferential Piping Weld (TCX-1-4103-1)	Approved NRR 9156 (12/28/95)
B-3	Branch Pipe Connection Weld (TCX-1-4104-1)	Submitted to NRC
C-1	Heat Exchanger Head Weld (TCX-2-1110-1)	Approved NRR 9156 (12/28/95)

RELIEF REQUEST
B-3

- A. Item(s) for which relief is requested:

TCX-1-4104-1
Branch Pipe Connection Weld

- B. Item(s) Code Class:

1

- C. Examination requirement from which relief is requested:

The requirement for volumetric examination of 100% of the weld length as described in Table IWB-2500-1, Examination Category B-J, Item No. B9.31.

- D. Basis for relief:

The specific examination area geometry of this pipe to branch connection weld precludes the complete ultrasonic examination of the volume required by Fig. IWB-2500-10. Approximately 23% of the examination volume did not receive the full code required coverage.

A best effort examination was performed. Full circumferential scan coverage was obtained. Axial scan coverage was achieved in one beam path direction with at least one beam angle for 100% of the examination volume (see pages 2 & 3).

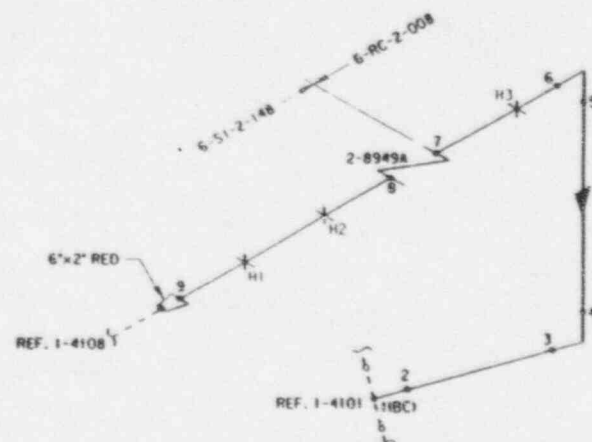
There were no recordable indications identified by the best effort volumetric examination or by the required surface examination performed.

- E. Alternate examinations:

None

- F. Anticipated impact on the overall level of plant quality and safety:

None



H1 : S1-2-148-402-C41R
H2 : S1-2-148-403-C41R
H3 : RC-2-008-402-C41S

ILLUSTRATIVE USE ONLY

NOTES:	DESCRIPTION: SAFETY INJECTION/REACTOR COOLANT	TU ELECTRIC CPSES UNIT 2		
	T/SCH: 16", 719"/160			
	BRP: RC-2-RB-019, S1-2-RB-061	INSERVICE INSPECTION LOCATION ISOMETRIC		
	FLOW: M2-0250, M2-0263			
APPROVAL: <i>R. P. May, 9-1-94</i>		TCX-1-4104	REV. 1	09-01-94

TCX141041.1SI

WESTINGHOUSE NUCLEAR SERVICES DIVISION

LIMITATION TO EXAMINATION

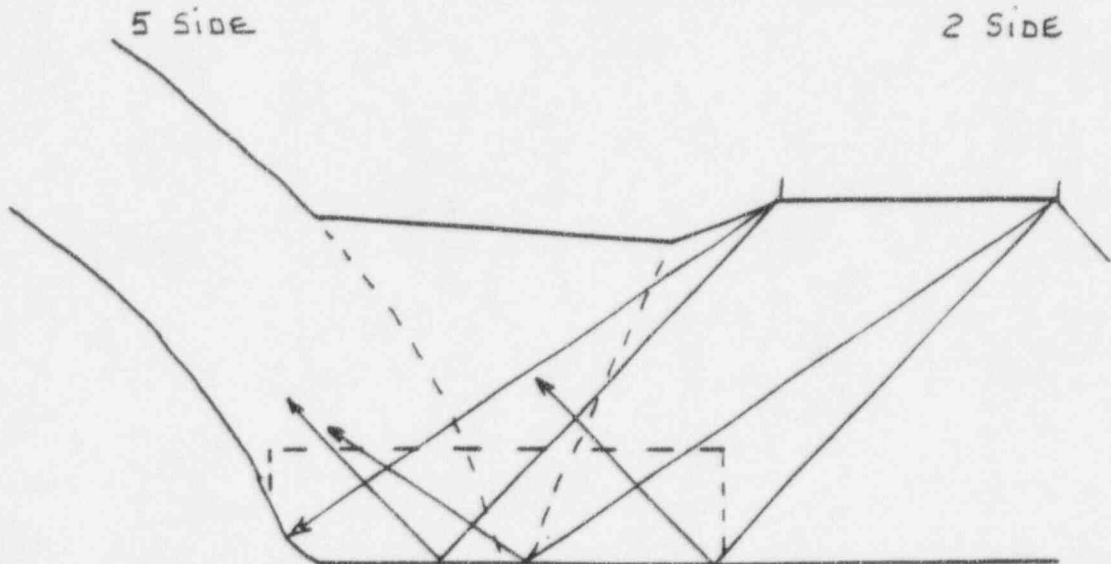
PLANT COMANCHE PEAK UNIT 2 SKETCH TCX-1-4104 REV. 1
SYST./COMP. SAFETY INJECTION / REACTOR COOLANT PROCEDURE TX-ISI-214 REV. 0
EXAMINER Joseph D. Fungak DATE 3-4-88

RELATED TO: UT X PT MT VT IDENT. NO. 1 (BC)

PROVIDE GENERAL INFORMATION TO DESCRIBE APPROXIMATE SIZE, LOCATION AND TYPE OF LIMITATION.

23% OF THE REQUIRED EXAMINATION VOLUME IS NOT COVERED IN 2 BEAM PATH DIRECTIONS.

100% OF THE REQUIRED EXAMINATION VOLUME IS COVERED IN AT LEAST 1 BEAM PATH DIRECTION.



Reviewed for P. Hain 3/14/96

<u>ICR NO.</u>	<u>AFFECTED PAGE(S)</u>	<u>DESCRIPTION OF CHANGE</u>
ISI-2R1-01	Section 2.0 RHR dwg., sht. 1 & 2 Section 5.0 Table 9 page 115	Incorporate DM 94-45
ISI-2R1-02	Section 4.1 pg's 6, 37, 40, 43, 46 52, 61, 69, 70, 71, 74 Section 4.2 pg. 119 App. A pg. 2 App. B pg. 2	Change cal blocks, reschedule exams add Relief Request