

ABWR SSAR

Amendment 23 - Non-Proprietary Page Change Instruction

The following pages (11x17 foldout drawings) have been changed, please make the specified changes in your SSAR. Pages are listed as page pairs (front & back). Bold page numbers represent a page that has been changed by Amendment 23.

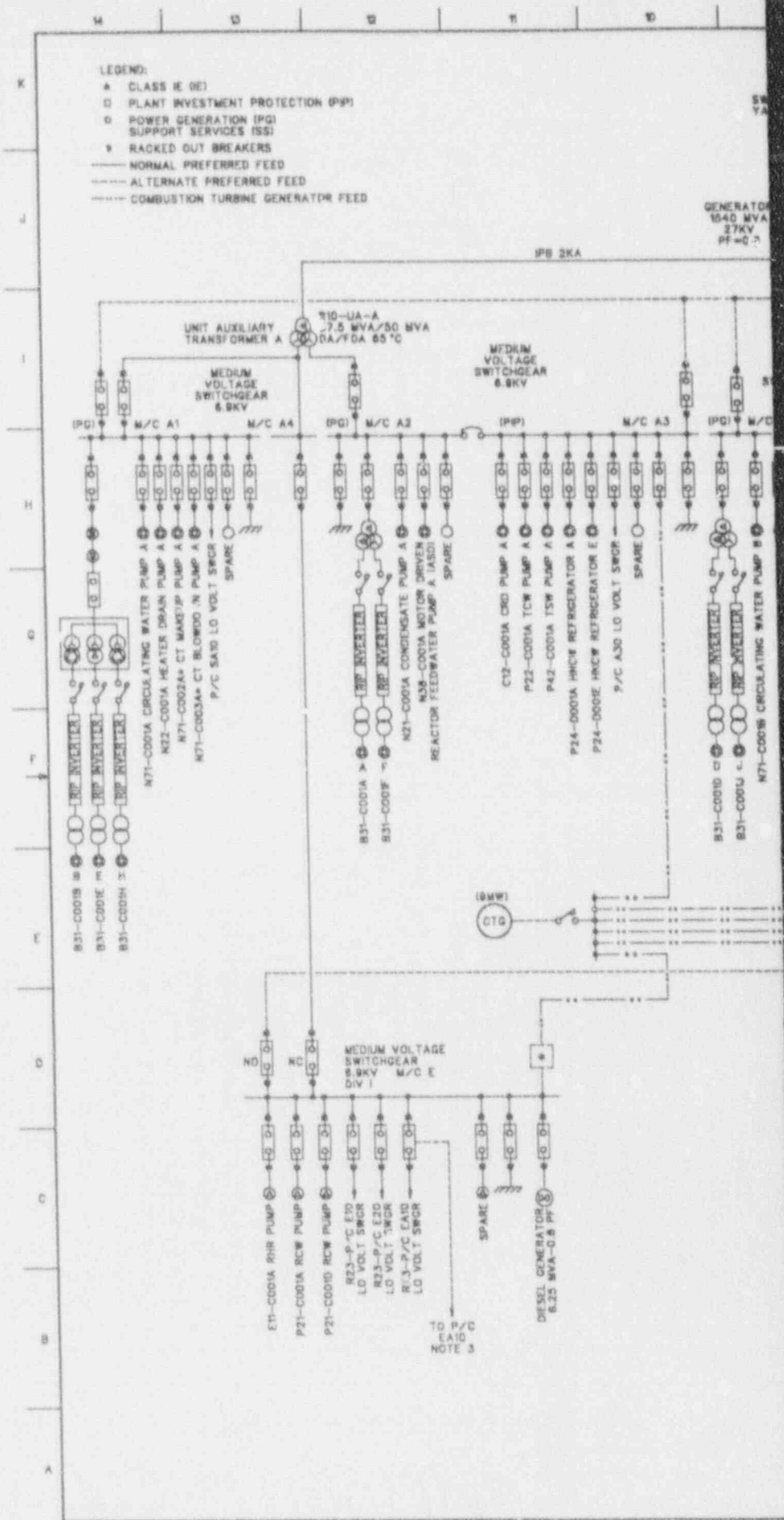
| REMOVE | ADD |
|----------|----------|
| PAGE No. | PAGE No. |

Chapter 8

| | |
|--------------------|------------|
| 8.3-30 thru 8.3-38 | 8.3-30, 31 |
| | 8.3-32, 33 |
| | 8.3-34, 35 |
| | 8.3-36, 37 |
| | 8.3-38 |

Chapter 18

| | |
|-----|---------|
| Add | 18C.2-5 |
| Add | 18C.3-3 |



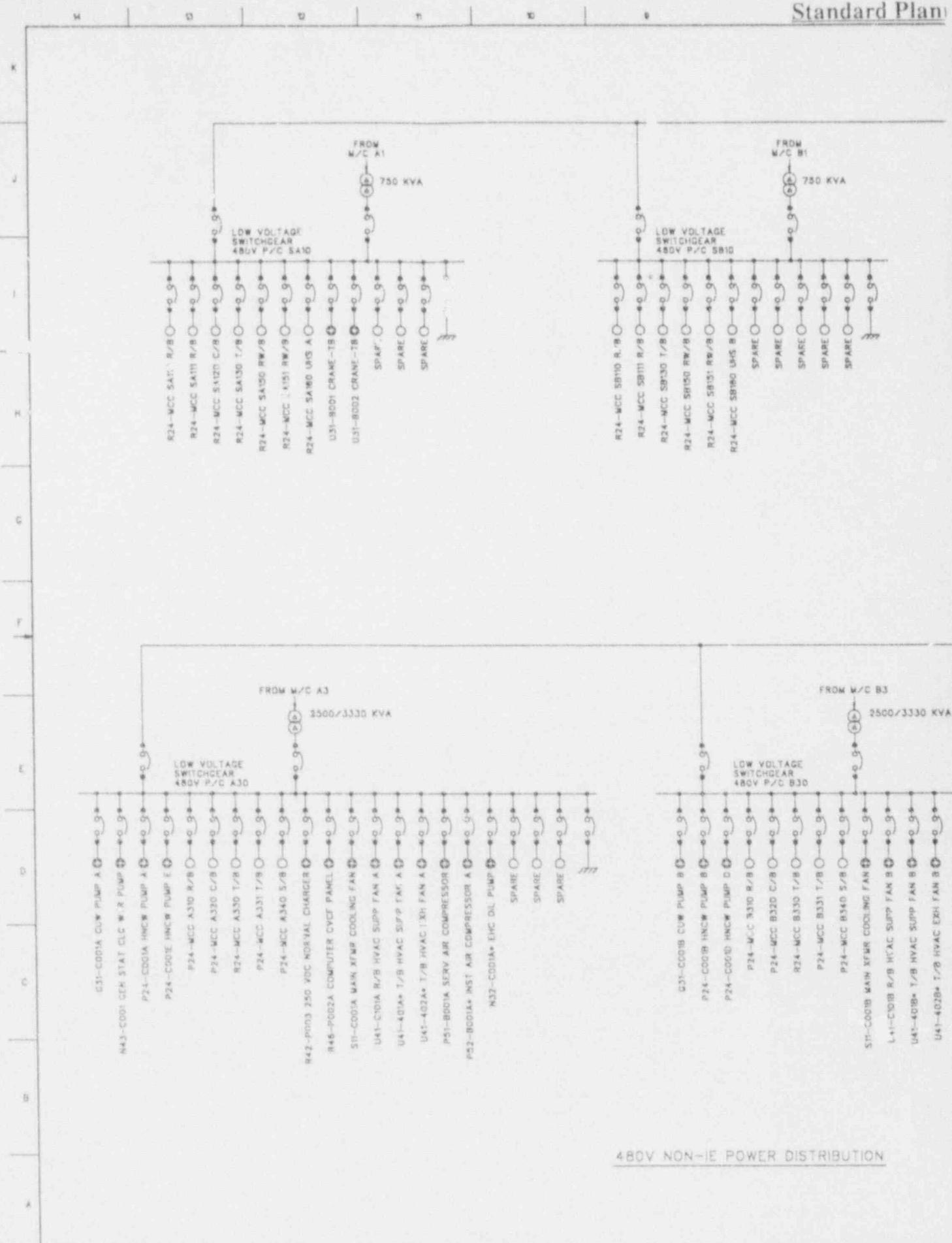
REFERENCES



921130048-0/

8.3-30)

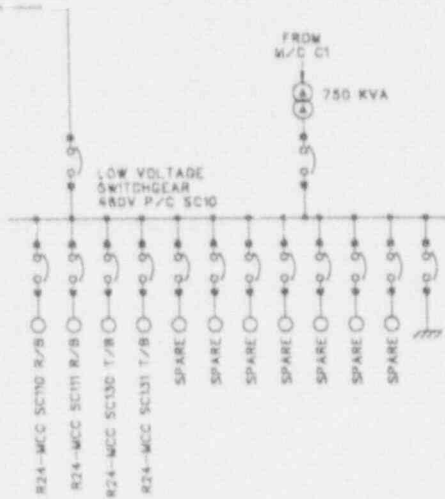
ABWR Standard Plan



480V NON-IE POWER DISTRIBUTION

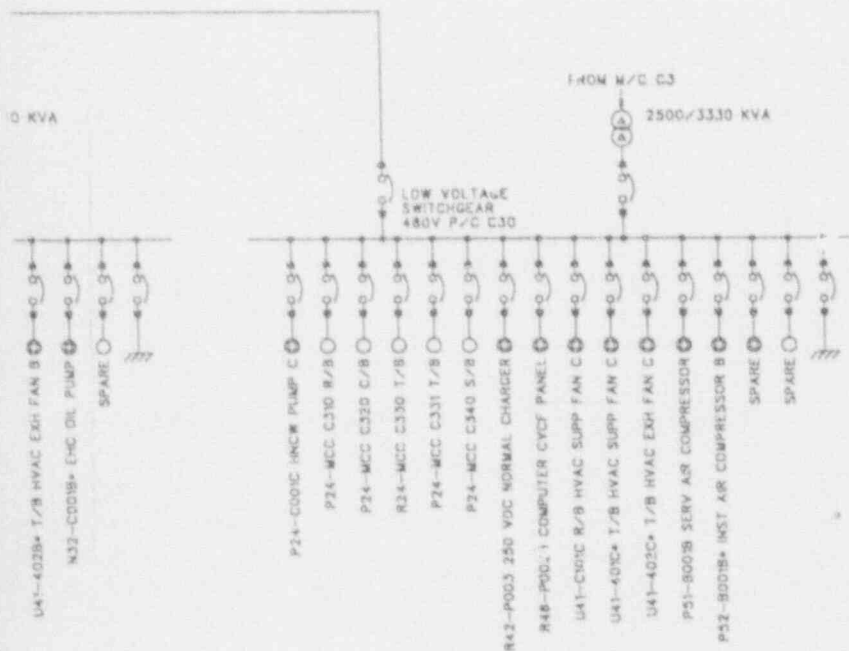
Fig

ant



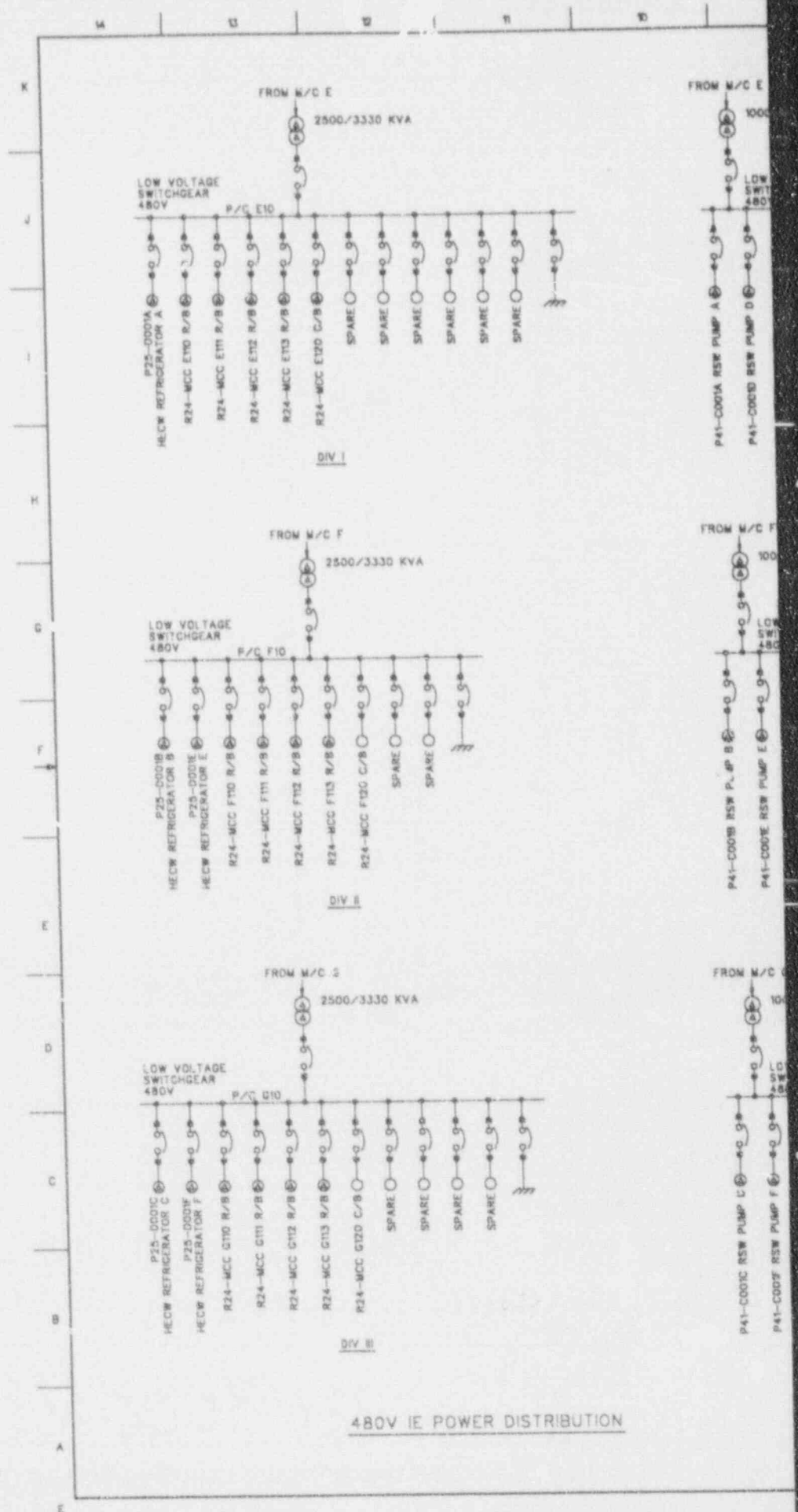
S1
APERTURE
CARD

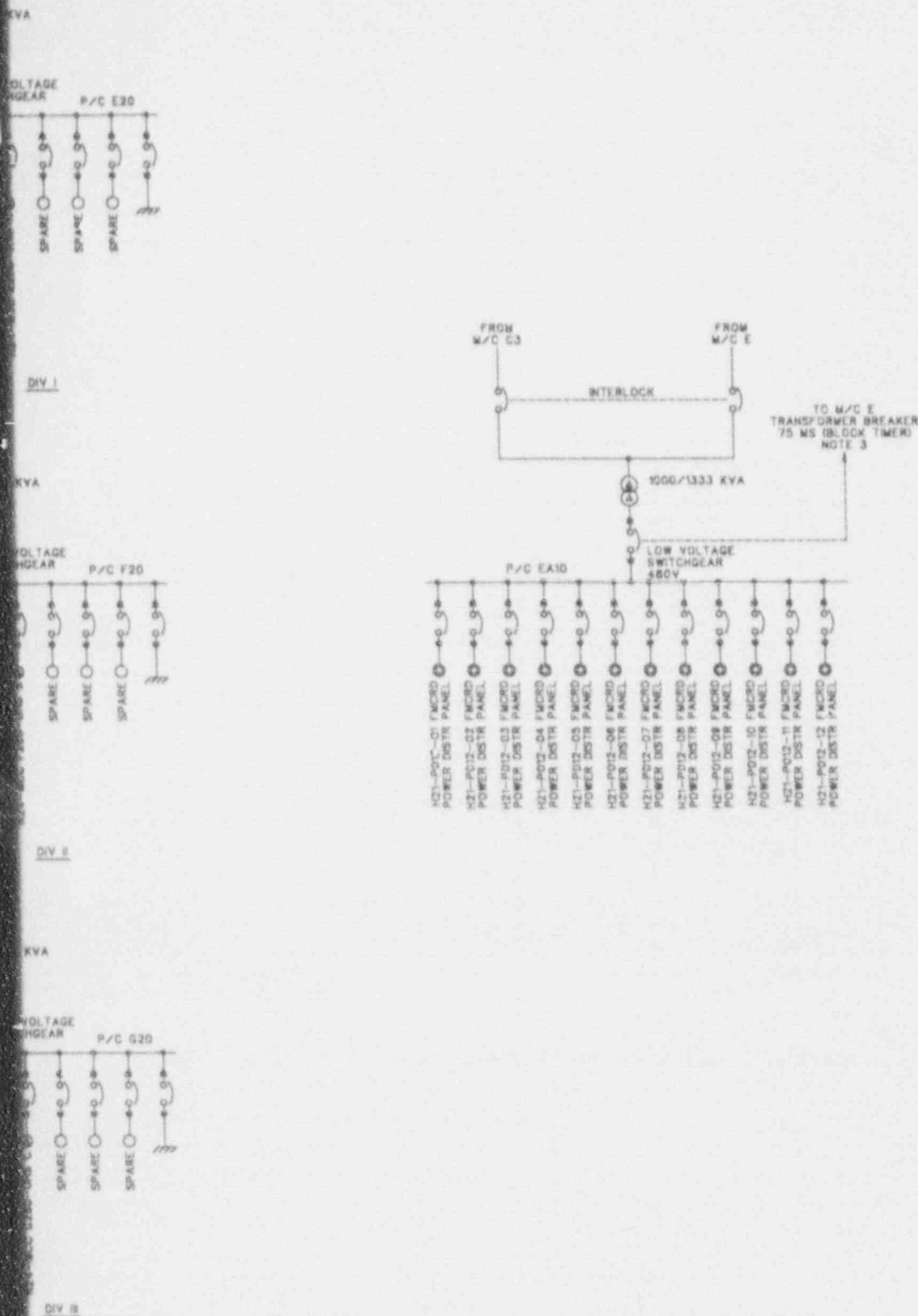
Also Available On
Aperture Card



9211300048-02

Figure 8.3-1 ELECTRICAL POWER DISTRIBUTION SYSTEM SLD (Sheet 2 of 3)



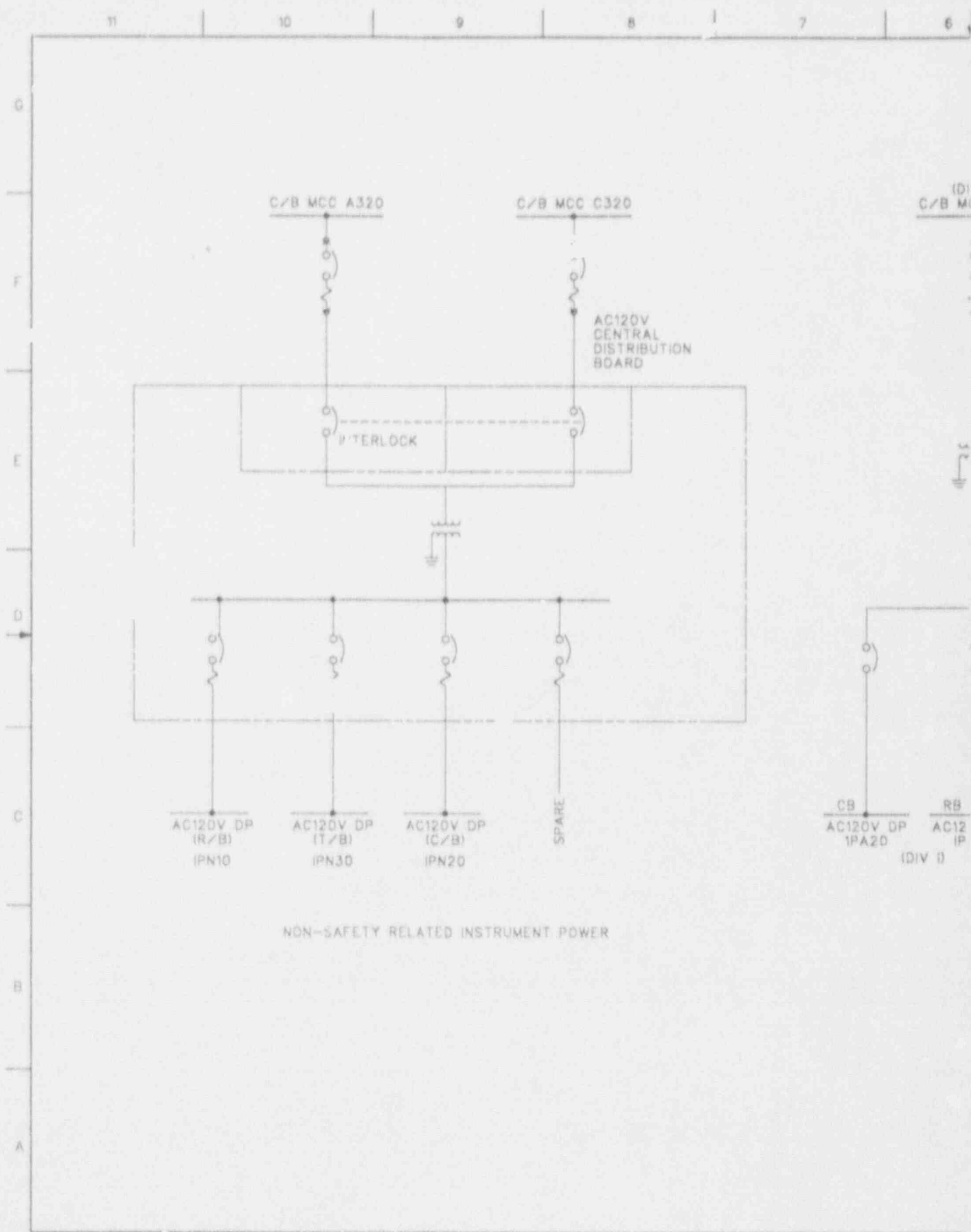


SI
APERTURE
CARD

Also Available On
Aperture Card

9211300048-03

Figure 8.3-1 ELECTRICAL POWER DISTRIBUTION SYSTEM SLD (Sheet 3 of 3)





SI
APERTURE
CARD

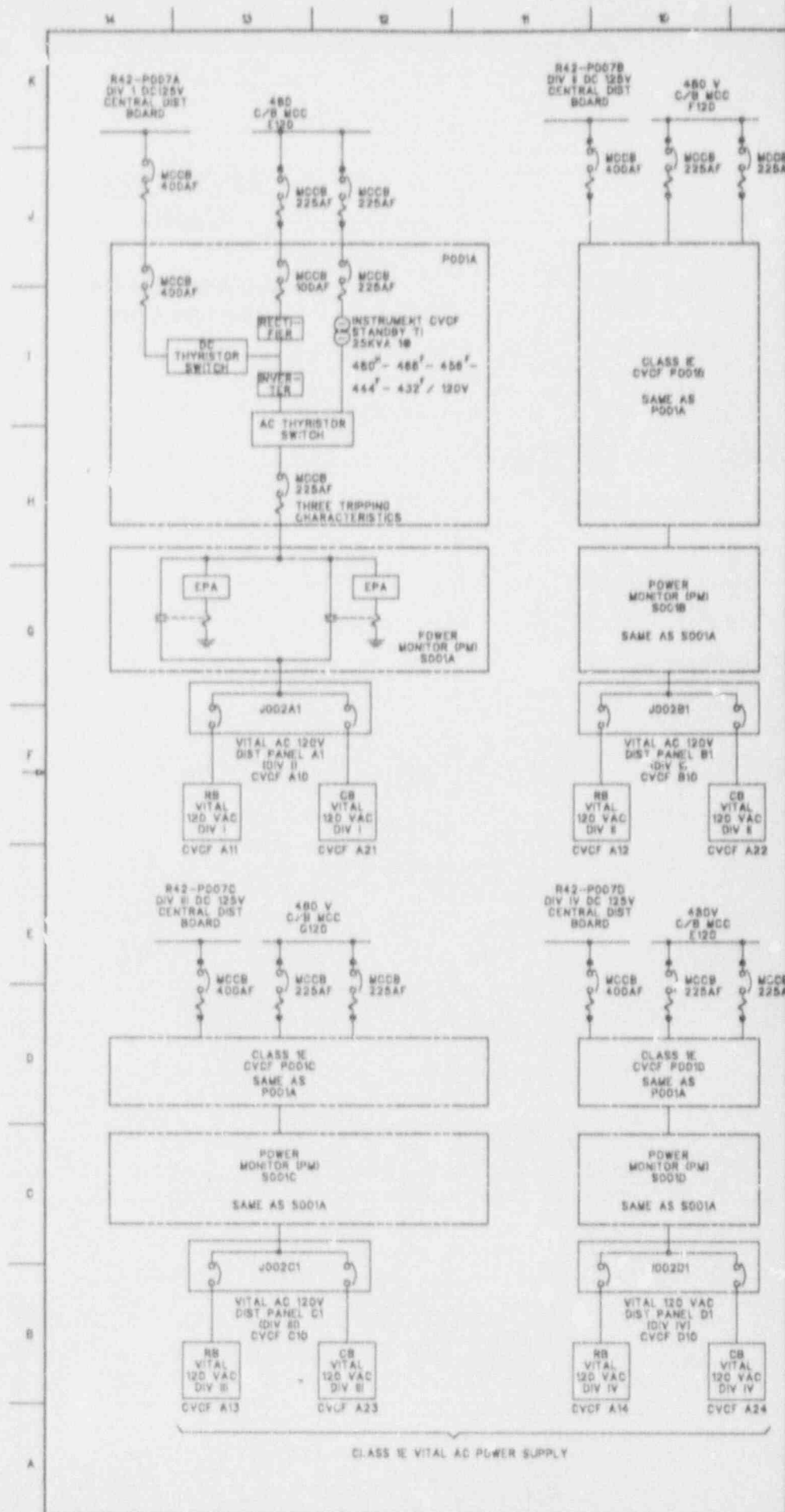
Also Available On
Aperture Card

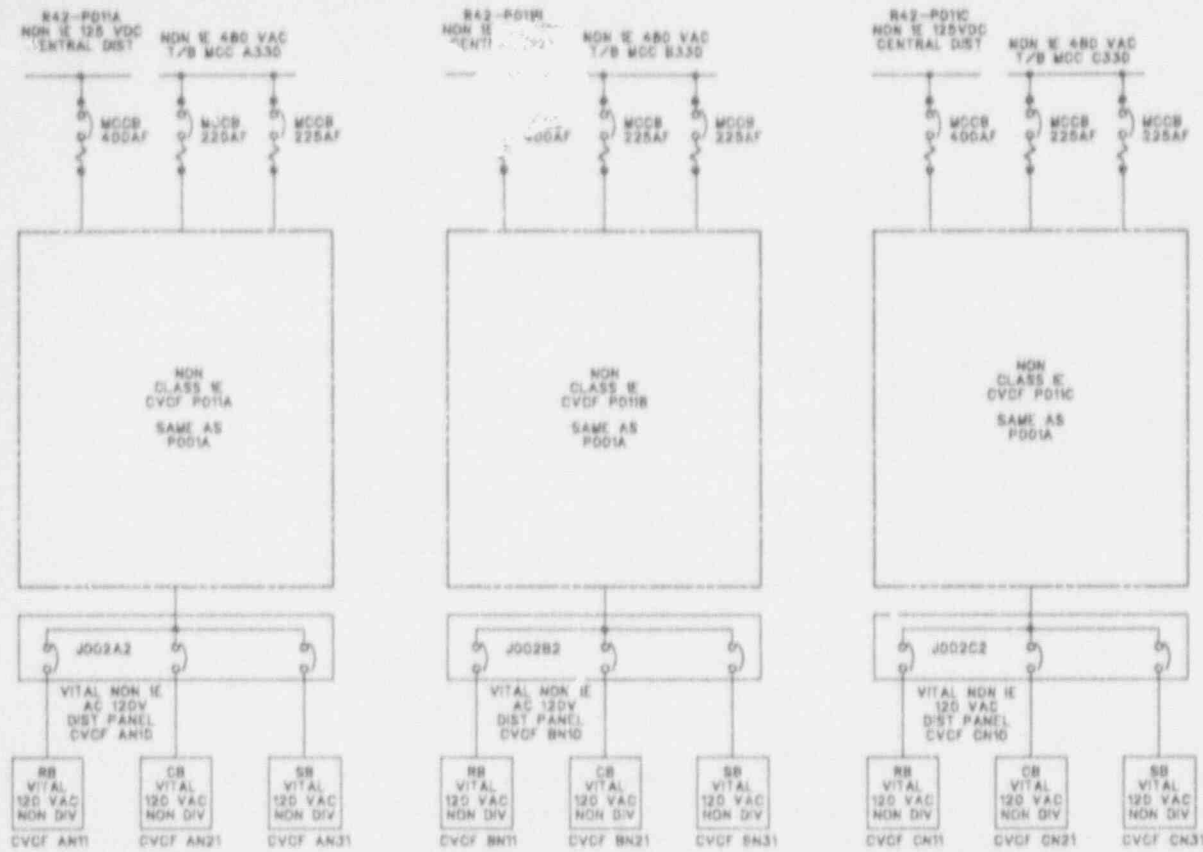
MPL NO. R47-1010

9211300048-04

92-170-36

Figure 8.3-2 INSTRUMENT AND CONTROL POWER SUPPLY SYSTEM SLD





NON CLASS IE VITAL AC POWER SUPPLY

NOTES:

1. ELECTRICAL PROTECTION ASSEMBLY (EPA) TO BE POWERED FROM CIRCUIT IT MONITORS OR 125 VDC.
2. EACH EPA TO BE COMPRISED OF OR THE EQUIVALENT OF A 27 RELAY (UNDER VOLTAGE), A 58 RELAY (OVER VOLTAGE), AND AN 81 RELAY (UNDER AND OVER FREQUENCY).
3. EPA OPERATING RANGE:
UNDER VOLTAGE - 110% VAC
OVER VOLTAGE - 140 VAC
UNDER FREQUENCY - 57 HZ
OVER FREQUENCY - 63 HZ
4. TRIP SETTINGS OF EPA TO BE $\pm 10\%$ OF THE NOMINAL VOLTAGE AND $\pm 5\%$ OF THE NOMINAL FREQUENCY FOR PERIOD OF BETWEEN 0.1 AND 3.0 SECONDS.
5. EACH EPA TO HAVE A "TEST" PUSHBUTTON.

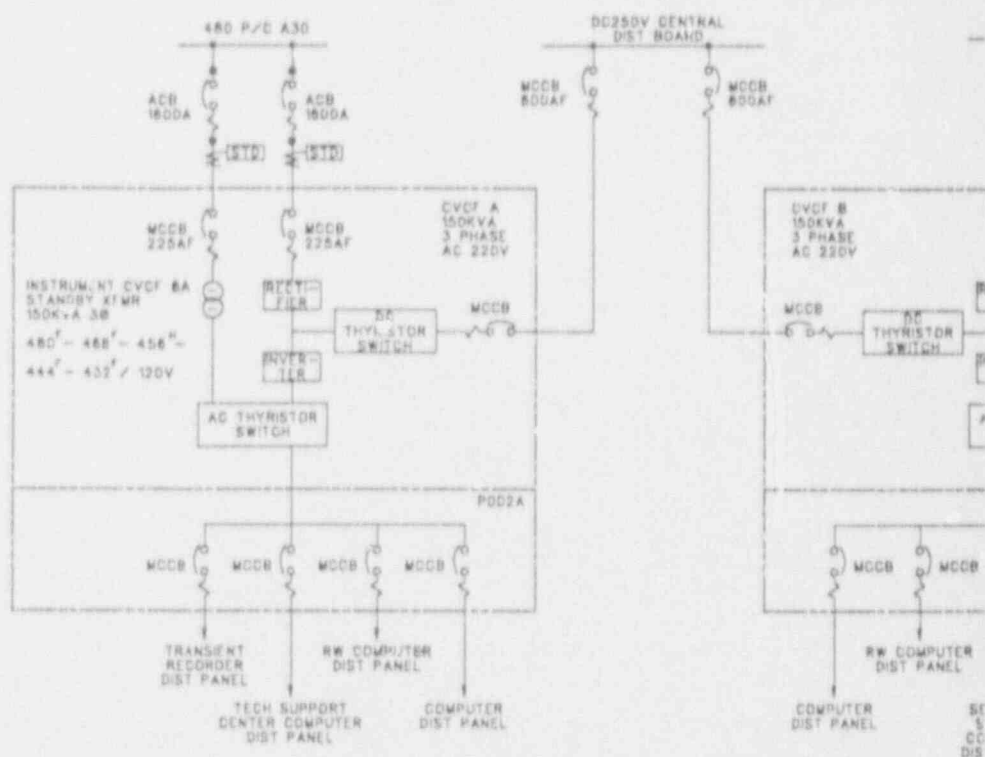
SI
APERTURE
CARD

Also Available On
Aperture Card

MPL NO. R46-1010

921/300048-05

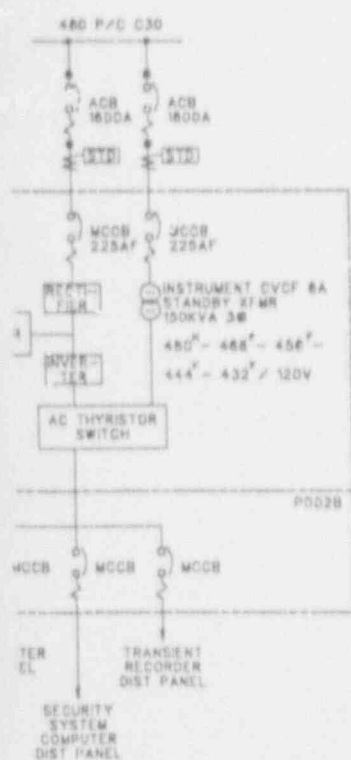
Figure 8.3-3 PLANT VITAL AC POWER SUPPLY SYSTEM SLD (Sheet 1 of 2)



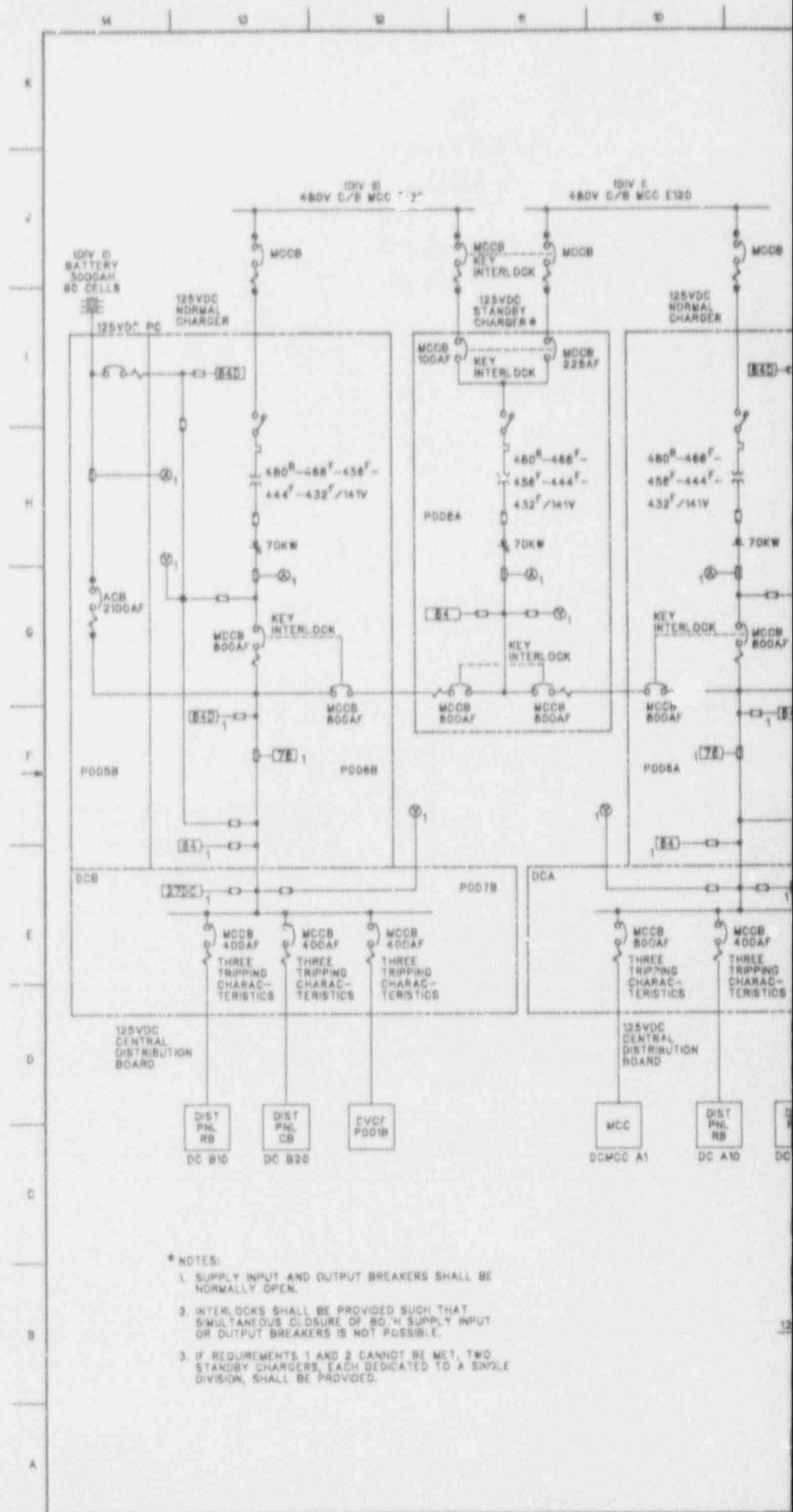
COMPUTER VITAL AC POWER SUPPLY

SI APERTURE CARD

Also Available On
Aperture Card

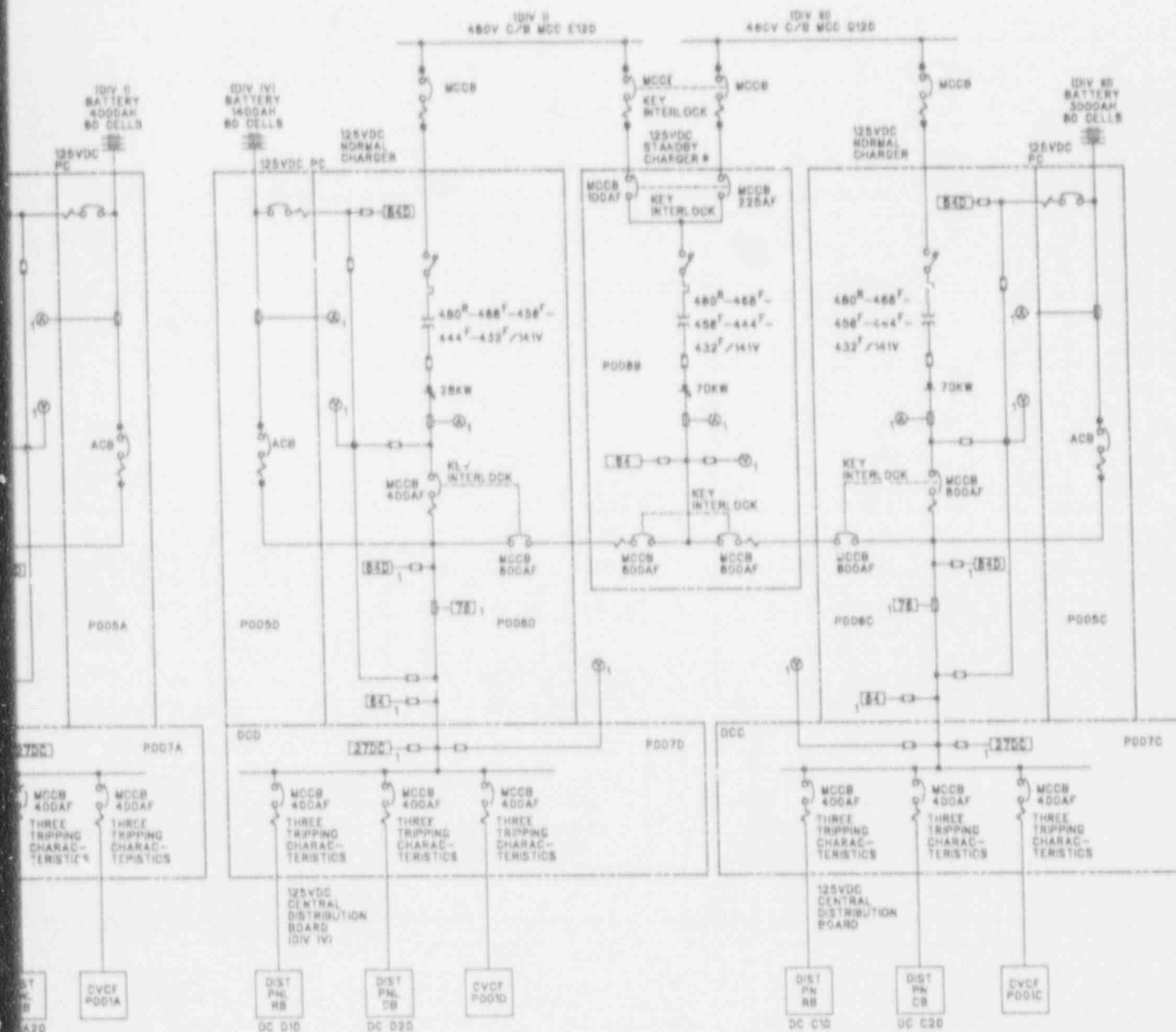


92113000 48-06



ABWR Standard Plant

23A6100AG
REV B



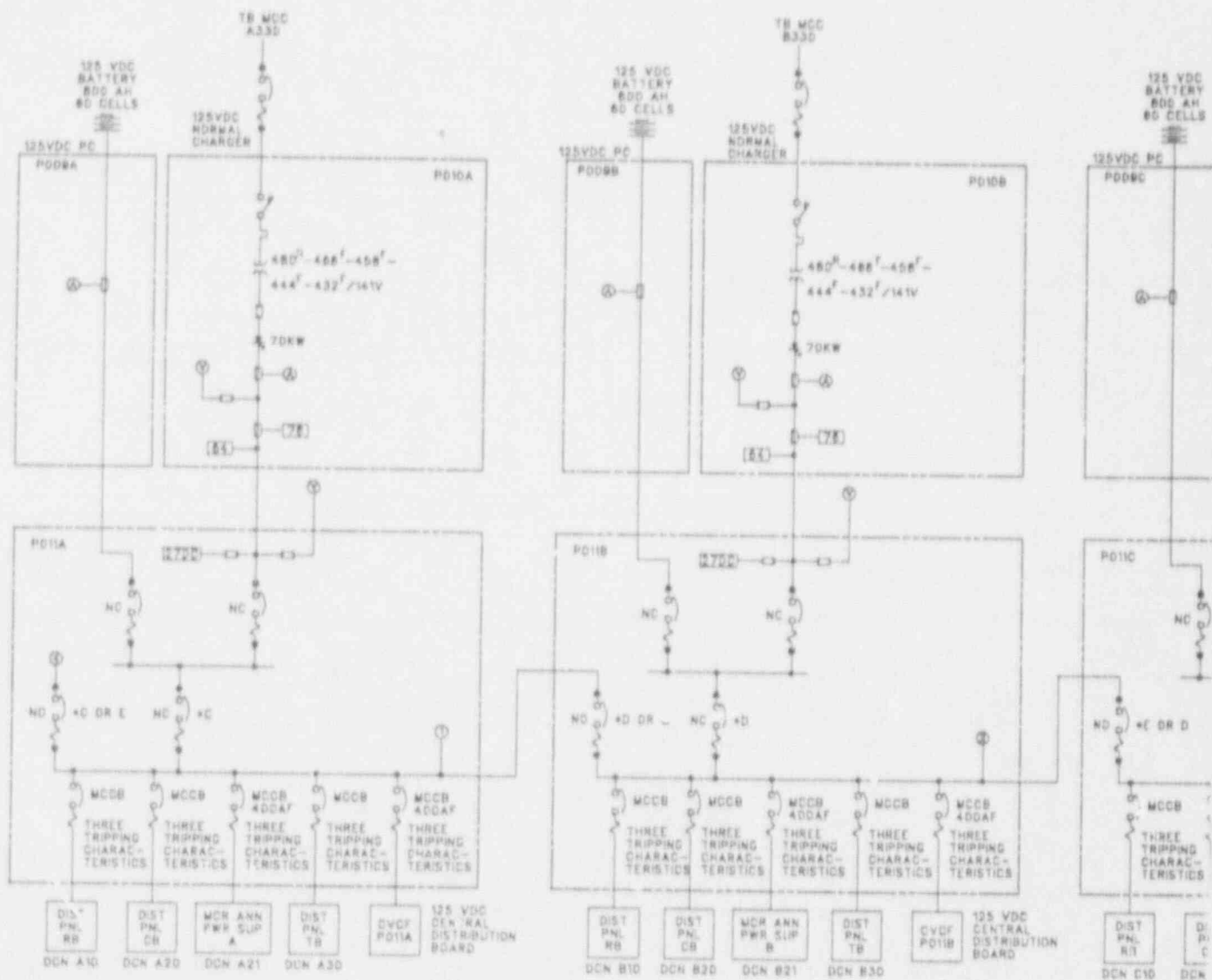
SI
APERTURE
CARD

Also Available On
Aperture Card

WPA, NO. 242-1010

9211300048-07

Figure 8.3-4 PLANT DC POWER SUPPLY SYSTEM SLD (Sheet 1 of 3)

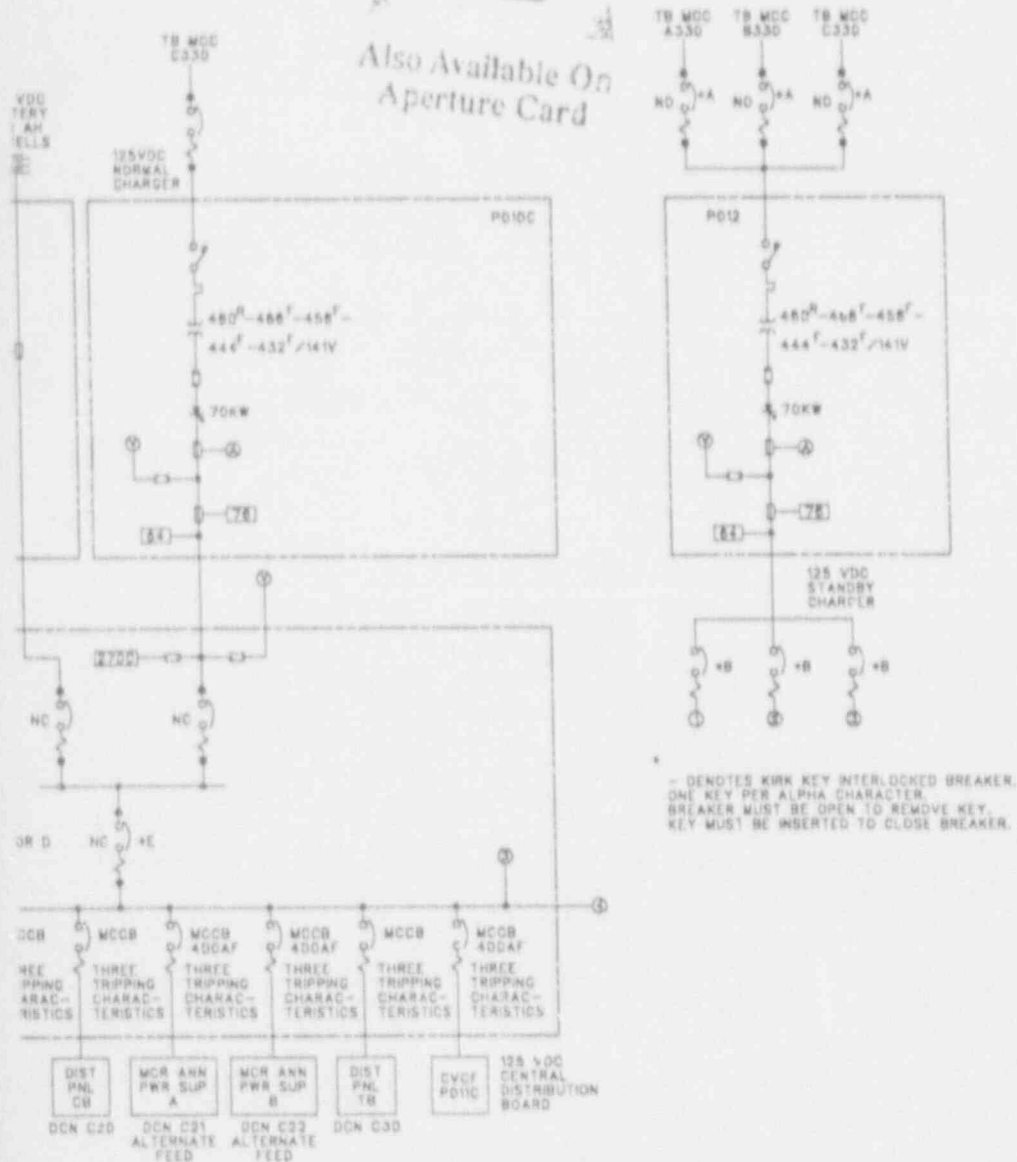


125 VDC NON SAFETY RELATED POWER SUPPLY

ant

SI
APERTURE
CARD

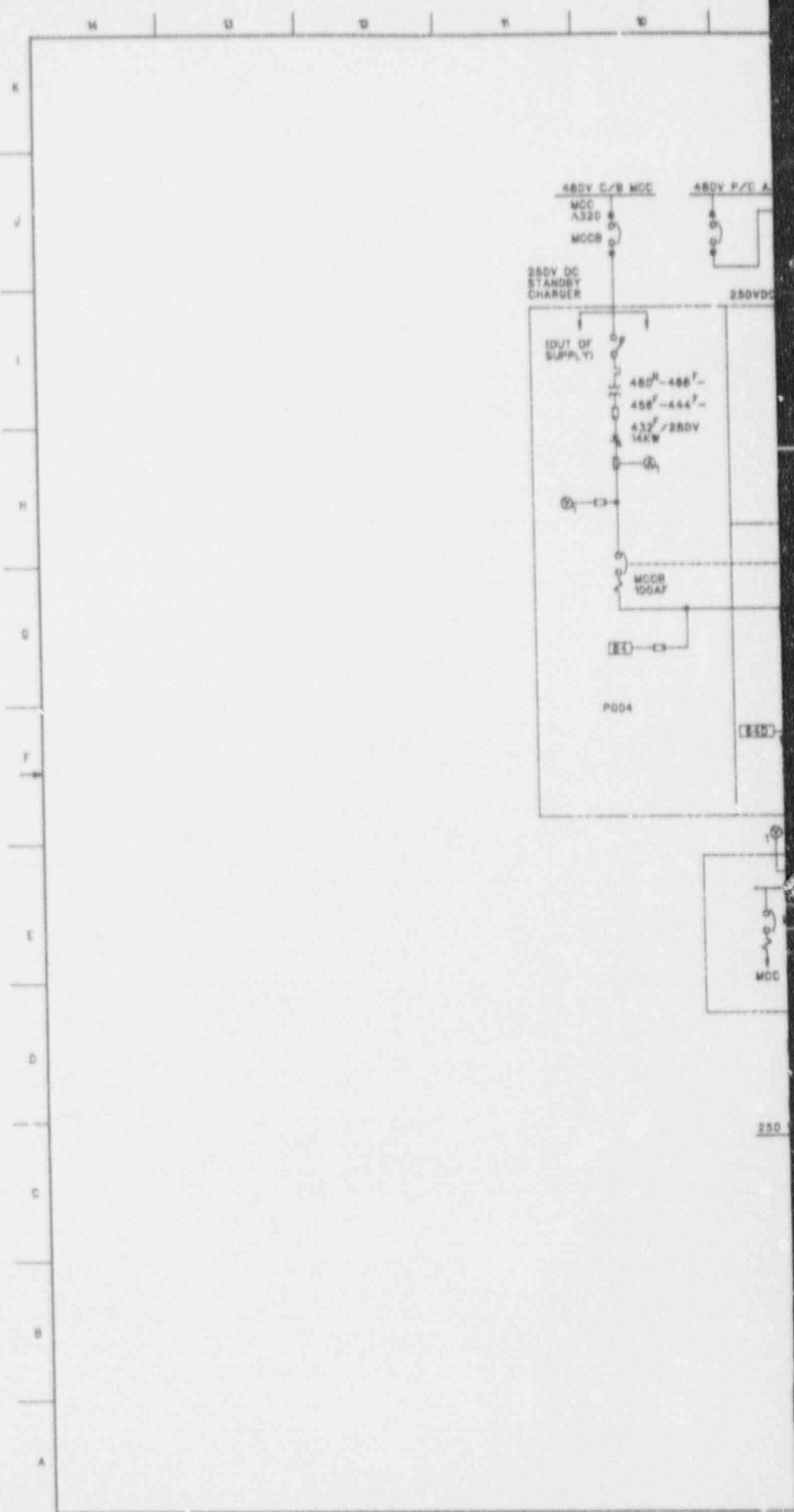
Also Available On
Aperture Card



- DENOTES KIRK KEY INTERLOCKED BREAKER
ONE KEY PER ALPHA CHARACTER.
BREAKER MUST BE OPEN TO REMOVE KEY.
KEY MUST BE INSERTED TO CLOSE BREAKER.

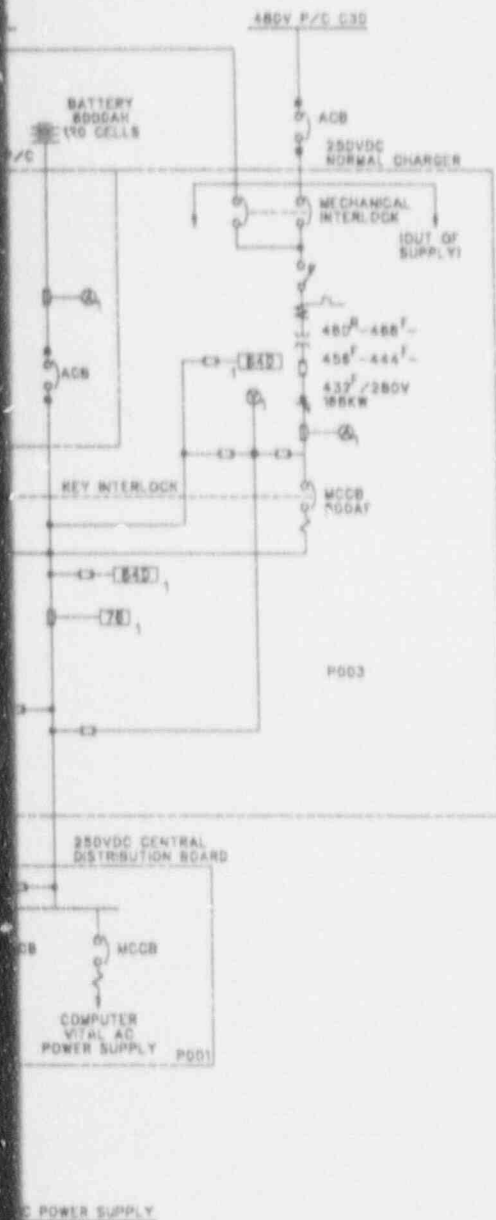
9211300048-08

Figure 8.3-4 PLANT DC POWER SUPPLY SYSTEM SLD (Sheet 2 of 3)



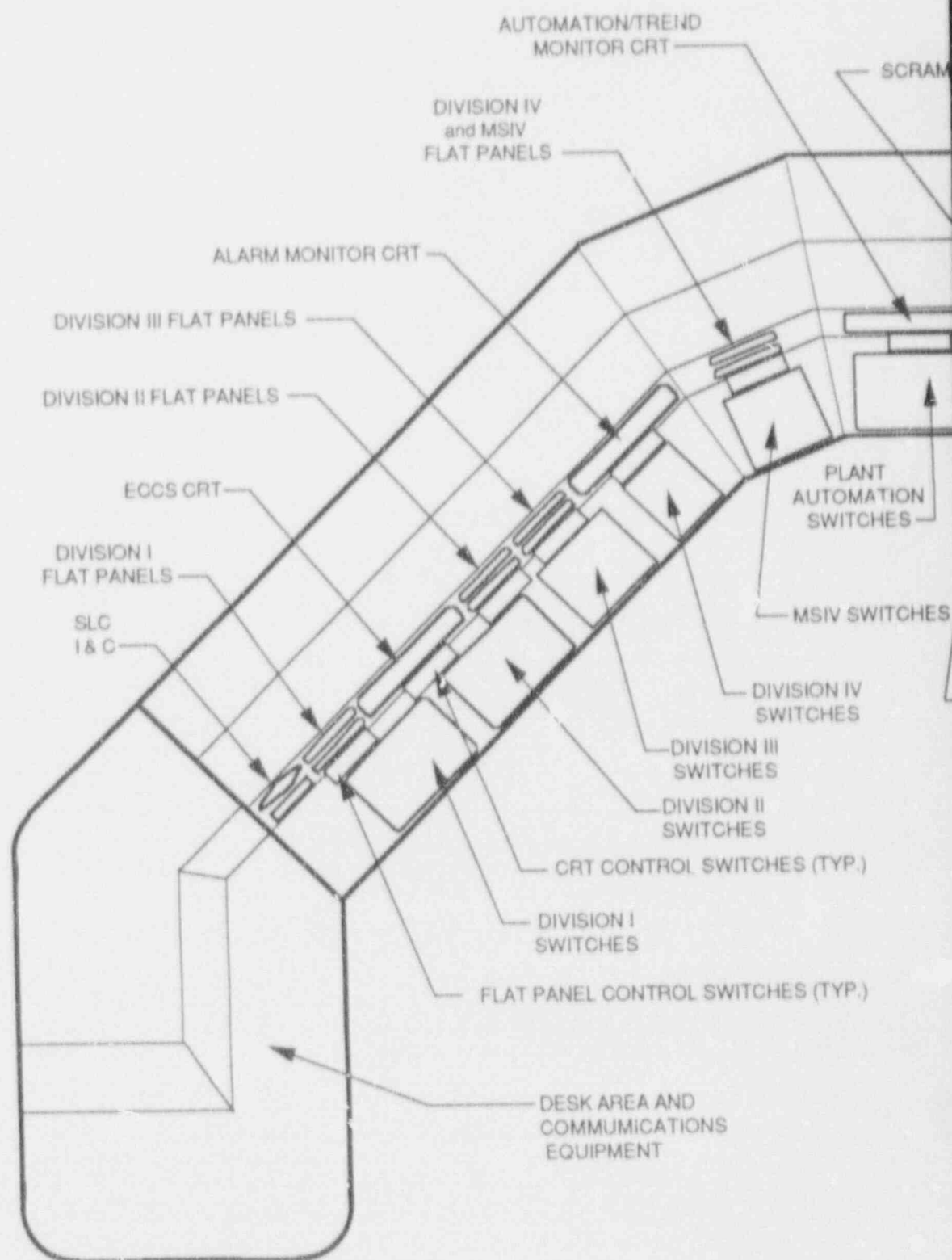
SI
APERTURE
CARD

Also Available On
Aperture Card



9211300048-09

Figure 8.3-4 PLANT DC POWER SUPPLY SYSTEM SLD (Sheet 3 of 3)



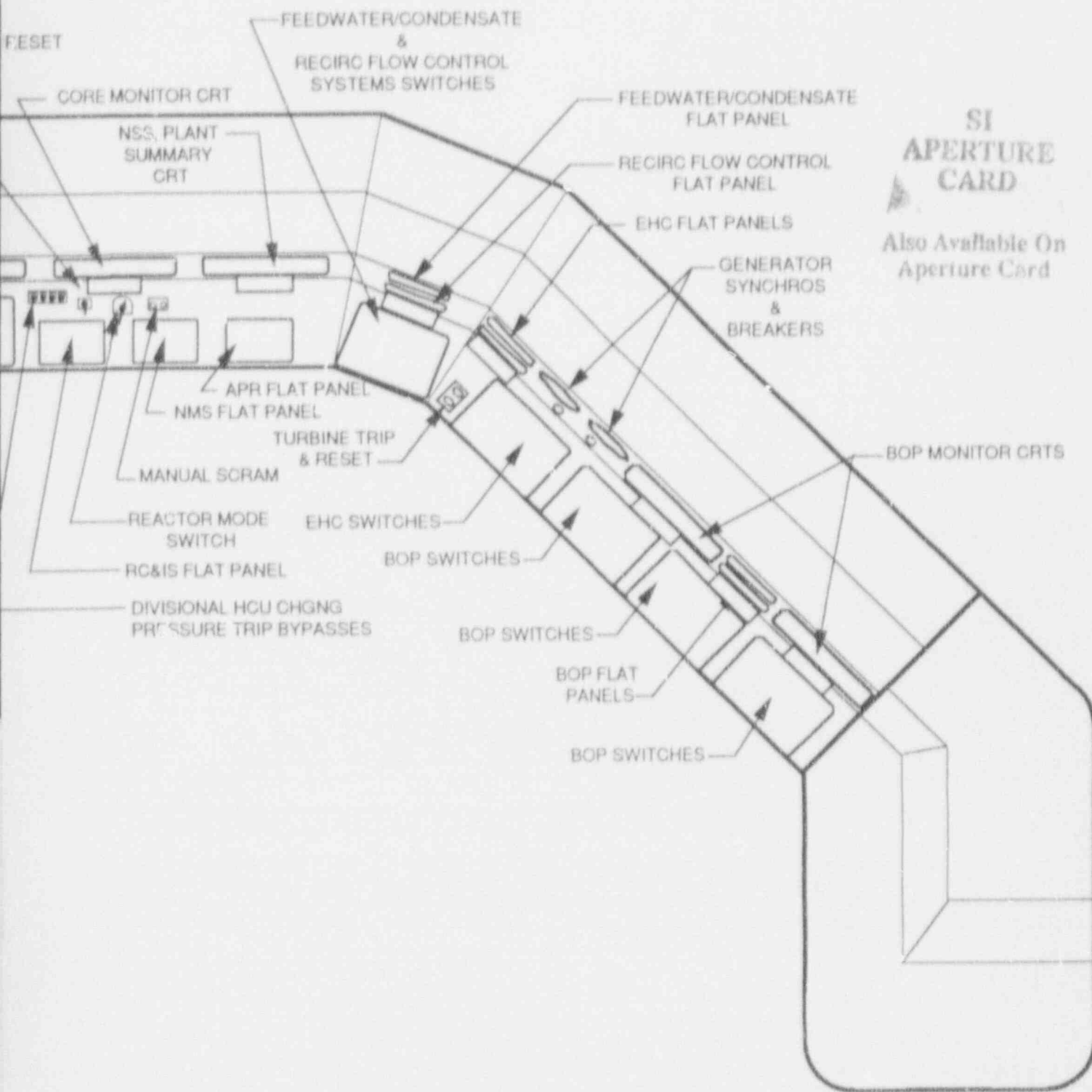
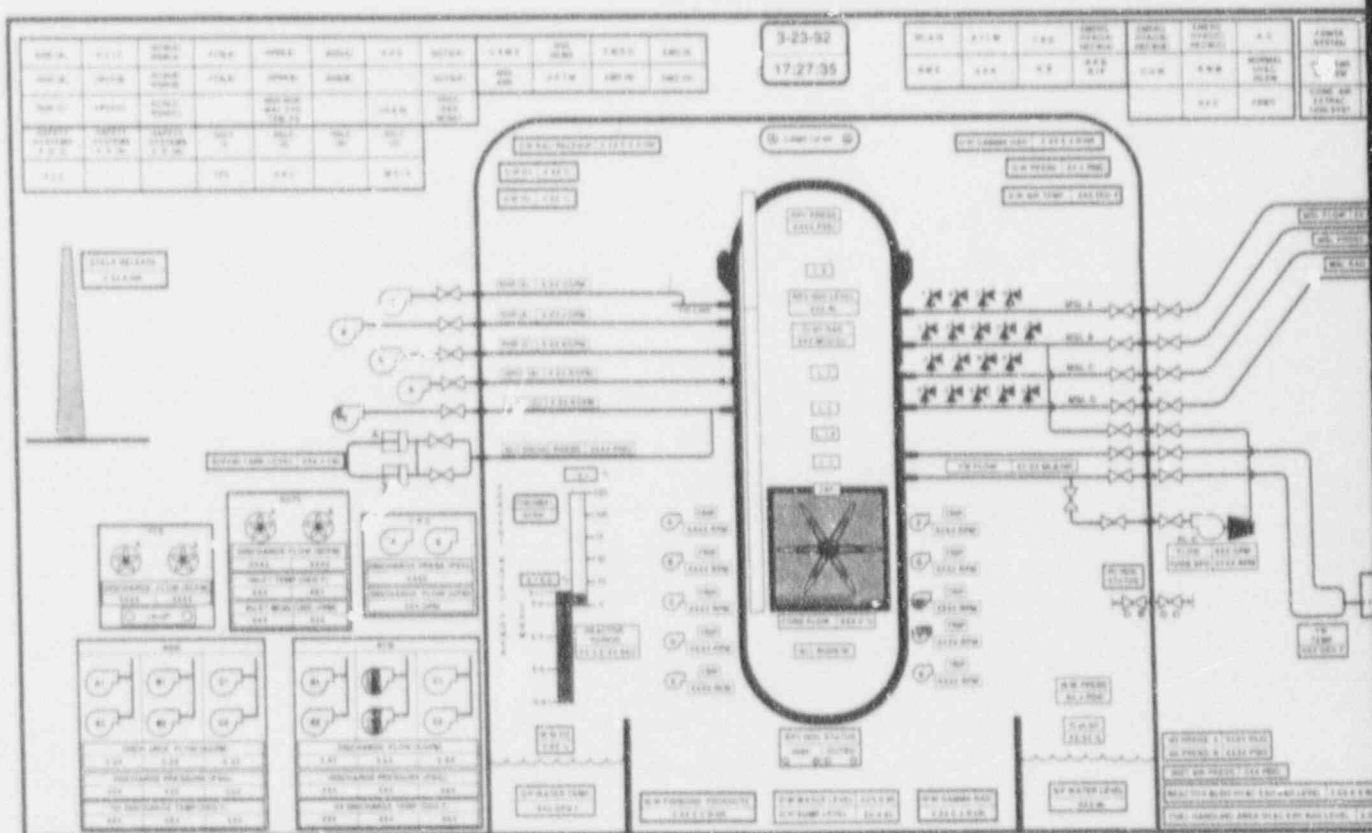


Figure 18C.2-4
ARRANGEMENT OF EQUIPMENT ON MAIN CONTROL CONSOLE

FIXED-



Also Available On
Aperture Card

9211300048.11 18C.3.3