

ENCLOSURE

VOGTLE ELECTRIC GENERATING PLANT
CORRECTION TO INSERVICE INSPECTION SUMMARY REPORT
FOR
VEGP-1 FALL 1991 MAINTENANCE/REFUELING OUTAGE
INSTRUCTIONS FOR INCORPORATION

The corrected pages to Volume 1 of the VEGP-1 ISI Final Report for the Fall 1991 maintenance/refueling outage would be incorporated as follows:

Remove Page

2-6
6-1
6-2
6-3
18-2
18-3
-
-
-
-

Insert Page

2-6
6-1
6-2
6-3
18-2
18-3
Dwg. ISI-11201-009*
Dwg. ISI-11201-010*
Dwg. ISI-11201-011*
Dwg. ISI-11201-012*

* Insert drawings ISI-11201-009 through -012 after drawing ISI-11201-008.

Baseline examinations were performed on eight new welds (four 3" cap-to-branch welds and four 2" thermowell-to-branch welds) which resulted from the RTD Bypass Elimination modification to the Reactor Coolant System. Specifically, the baseline examinations utilizing surface means, i.e., liquid penetrant, included the following: 3" welds (11201-005-9, -006-9, -007-9 and -008-9) and 2" welds (11201-009-10, -010-8, -011-9 and -012-10). The liquid penetrant examinations performed by Westinghouse or its contractor during the course of the modification constitute the baseline examination as allowed by ASME Section XI, IWB-2200(b). Results of the surface examinations were acceptable. The RTD Bypass Elimination was performed under Design Change Package (DCP) 91-V1N009 and Maintenance Work Order (MWO) 19104141. The documentation package(s) for the subject modification are available at the plant site for review upon request.

The Eddy Current (ET) examinations of steam generator tubing, as required by VEGP Technical Specification 4.4.5.0, were performed by Westinghouse and are discussed in the "Class 3 and Augmented Examinations" portion of this document.

CLASS 1 PRESSURE TEST

A system leakage test (Test # LT-1) as required by ASME Section XI, Table IWB-2500-1, Examination Category B-P, was performed on the Class 1 pressure retaining boundary. These visual examinations (VT-2) revealed minor leakage and boron residue coming from mechanical connections. Appropriate corrective action was initiated to correct this minor leakage.

CLASS 2 EXAMINATIONS

Selected Class 2 components were examined utilizing MT, PT, and UT, as applicable. Specific components and examination areas are itemized in the applicable portions of this report document. A summary of those components examined are listed below:

- Steam Generator No. 4 Upper Shell Barrel "C" to Transition Cone Weld and Lower Shell Barrel "A" to Tube Plate Weld
- Steam Generator No. 4 Trunnion to Shell Weld
- Steam Generator No. 4 Auxiliary Feedwater Nozzle to Shell Weld
- RHR Heat Exchanger Train "B" Welds
- RHR Pump Train "A" Integral Attachment Support Weld
- CVCS Centrifugal Charging Pump Train "A" Integral Attachment Support Welds
- CVCS Letdown Heat Exchanger Weld
- CVCS Suction Dampener Weld
- Piping Welds
- Integral Attachment Support Welds

The Class 2 examinations resulted in several welds having reportable indications. Five welds had indications which were detectable by either liquid penetrant or magnetic particle examination while one weld had indications which were detectable by ultrasonic examination. The remainder of the examinations did not reveal any detectable non-geometrical indications of a recordable size.

For details on the reportable non-geometric indications observed, refer to the respective INF found in the INF section of this report document. The six welds having reportable indications are discussed below:

1. Residual Heat Removal System - Line 008 - Support H001 (Weld No. 11205-008-17A). Linear indications totalling 0.4 inches were observed during the liquid penetrant examination of weld 11205-008-17A (Support H001). The indications were evaluated per ASME Section XI, Figure IWA-3400-1 and Table

VEGP-1 THIRD REFUELING OUTAGE
CLASS 1 PIPING EXAMINATIONS

ASME SECT XI ITEM NO/CAT.	AUGMENTED EXAMINATION REQUIREMENT	COMPONENT OR WELD NO/ DESCRIPTION	EXAM METH	EXAM PROCEDURE NO./REV.	CALIBRATION LOCKS	CAL SHEET NO.(S)	EXAM SHEET NO.(S)	RESULTS	REMARKS
B9.21 B-J		11201-005-9 3" PIPE CAP TO BRANCH CONNECTION	PT	VENDOR	N/A	N/A	VENDOR	SAT	BASELINE EXAM. REFERENCE MWO 19104141 AND DCP # 91-V1N0009.
B9.21 B-J		11201-006-9 3" PIPE CAP TO BRANCH CONNECTION	PT	VENDOR	N/A	N/A	VENDOR	SAT	BASELINE EXAM. REFERENCE MWO 19104141 AND DCP # 91-V1N0009.
B9.21 B-J		11201-007-9 3" PIPE CAP TO BRANCH CONNECTION	PT	VENDOR	N/A	N/A	VENDOR	SAT	BASELINE EXAM. REFERENCE MWO 19104141 AND DCP # 91-V1N0009.
B9.21 B-J		11201-008-9 3" PIPE CAP TO BRANCH CONNECTION	PT	VENDOR	N/A	N/A	VENDOR	SAT	BASELINE EXAM. REFERENCE MWO 19104141 AND DCP # 91-V1N0009.
B9.40 B-J		11201-009-10 2" THERMOWELL TO BRANCH CONNECTION	PT	VENDOR	N/A	N/A	VENDOR	SAT	BASELINE EXAM. REFERENCE MWO 19104141 AND DCP # 91-V1N0009.
B9.40 B-J		11201-010-8 2" THERMOWELL TO BRANCH CONNECTION	PT	VENDOR	N/A	N/A	VENDOR	SAT	BASELINE EXAM. REFERENCE MWO 19104141 AND DCP # 91-V1N0009.
B9.40 B-J		11201-011-9 2" THERMOWELL TO BRANCH CONNECTION	PT	VENDOR	N/A	N/A	VENDOR	SAT	BASELINE EXAM. REFERENCE MWO 19104141 AND DCP # 91-V1N0009.
B9.40 B-J		11201-012-10 2" THERMOWELL TO BRANCH CONNECTION	PT	VENDOR	N/A	N/A	VENDOR	SAT	BASELINE EXAM. REFERENCE MWO 19104141 AND DCP # 91-V1N0009.
B9.11 B-J		11201-053-1 16" BRANCH CONNECTION TO PIPE	PT UT	PT-V-605/02 UT-V-404/03	313A	N/A S91V1C113	S91V1P064 S91V1U260	NRI RI	UT RI/SUB-SURFACE PLAKAR FLAW. SEE INF 191V1910. ACCE?TABLE AS IS.

VECP-1 THIRD REFUELING OUTAGE
CLASS 1 PIPING EXAMINATIONS

ASME SEC I XI ITEM NO/CAT.	AUGMENTED EXAMINATION REQUIREMENT	COMPONENT OR WELD NO/ DESCRIPTION	EXAM METHOD	EXAM PROCEDURE NO./REV.	CALIBRATION BLOCKS	CAL SHEET NO./CS	EXAM SHEET NO./CS	RESULTS	REMARKS
89.11 B-J		11201-056-1 6" SAFE END TO FLOW	PT UT	PT-V-605/02 UT-V-404/03	304A 324A	N/A S91V1C124 S91V1C130 N/A	S91V1P047 S91V1U244 S91V1U251 S91V1U263	NRI NRI RI N/A	UT RI/GEOMETRY.
89.11 B-J		11201-056-6 6" ELBOW TO FLANGE	PT UT	PT-V-605/02 UT-V-404/03	304A	N/A S91V1C125 S91V1C126	S91V1P048 S91V1U245 S91V1U246	NRI NRI NRI	N/A
87.50 B-G-2		11201-056-6 FB 6" FLANGE BOLT ASSEMBLY FOR 11201-PSV-8010C	VT-1	VT-V-715/01	N/A	N/A	S91V1V179	SAT	EXAMINED IN PLACE.
89.11 B-J		11201-057-1 6" SAFE END TO ELBOW	PT UT	PT-V-605/02 UT-V-404/03	304A 324A	N/A S91V1C127 S91V1C131	S91V1P049 S91V1U247 S91V1U252	NRI NRI RI	UT RI/GEOMETRY.
89.11 B-J		11201-057-8 6" ELBOW TO FLANGE	PT UT	PT-V-605/02 UT-V-404/03	304A	N/A S91V1C128 S91V1C129	S91V1P050 S91V1U248 S91V1U249	NRI NRI RI	UT RI/GEOMETRY.
87.50 B-G-2		11201-057-8 FB 6" FLANGE BOLT ASSEMBLY FOR 11201-PSV-8010B	VT-1	VT-V-715/01	N/A	N/A	S91V1V197	SAT	EXAMINED IN PLACE.
812.50 B-M-2		11201PSV8010A VALVE INTERNAL SURFACES	VT-3	PER MWD 19104675	N/A	N/A	N/A	SAT	RR-27/EXAMINED WHILE DISASSEMBLED.
87.70 B-G-2		11201PSV8010B VALVE BOLTING	VT-1	VT-V-715/01	N/A	N/A	S91V1V198	SAT	EXAMINED IN PLACE.

VEGP-1 THIRD REFUELING OUTAGE
CLASS 1 PIPING EXAMINATIONS

ASME SECT XI ITEM NO./CAT.	AUGMENTED EXAMINATION REQUIREMENT	COMPONENT OR WELD NO/ DESCRIPTION	EXAM METH	EXAM PROCEDURE NO./REV.	CALIBRATION BLOCKS	CAL SHEET NO.(S)	EXAM SHEET NO.(S)	RESULTS	REMARKS
B11.50 B-M-2		11201PSV8010B VALVE INTERNAL SURFACES	VT-3	PER MWO 19104675	N/A	N/A	N/A	SAT	RR-27/EXAMINED WHILE DISASSEMBLED.
B7.70 B-G-2		11201PSV8010C VALVE BOLTING	VT-1	VT-V-715/01	N/A	N/A	S91V1V180	SAT	EXAMINED IN PLACE.
B12.50 B-M-2		11201PSV8010C VALVE INTERNAL SURFACES	VT-3	PER MWO 19104675	N/A	N/A	N/A	SAT	RR-27/EXAMINED WHILE DISASSEMBLED.
B12.50 B-A-2		11204U6080 VALVE INTERNAL SURFACES	VT-3	PER MWO 19102241	N/A	N/A	N/A	SAT	RR-27/EXAMINED WHILE DISASSEMBLED.
B12.50 B-M-2		11204U6084 VALVE INTERNAL SURFACES	VT-3	PER MWO 19102242	N/A	N/A	N/A	SAT	RR-27/EXAMINED WHILE DISASSEMBLED.

EQUIPMENT DRAWINGS - (continued)

<u>System</u>	<u>Drawing Number</u>	<u>Drawing Revision Number</u>
Chemical and Volume Control	ISI-11208-P6-002	1
	ISI-11208-E6-003	1
	ISI-11208-V4-001	0
Safety Related (ESF) Chillers	ISI-11592-T7-001	0

PIPING DRAWINGS

<u>System</u>	<u>Drawing Number</u>	<u>Drawing Revision Number</u>
Reactor Coolant	ISI-11201-005	3
	ISI-11201-006	3
	ISI-11201-007	3
	ISI-11201-008	3
	ISI-11201-009	3
	ISI-11201-010	3
	ISI-11201-011	3
	ISI-11201-012	3
	ISI-11201-053	6
	ISI-11201-056	4
	ISI-11201-057	4
	ISI-11201-058	3
	ISI-11201-116	4
	ISI-11201-117	2
	ISI-11201-118	3
	ISI-11201-119	3
Nuclear service Cooling Water	ISI-11202-001 (Sh. 1)	2
	ISI-11202-001 (Sh. 2)	3
	ISI-11202-196 (Sh. 1)	2
	ISI-11202-196 (Sh. 2)	2
	ISI-11202-223 (Sh. 2)	2
	ISI-11202-225 (Sh. 1)	2
	ISI-11202-225 (Sh. 2)	2
Safety Injection	ISI-11204-006 (Sh. 2)	3
	ISI-11204-008 (Sh. 1)	2
	ISI-11204-008 (Sh. 2)	3
	ISI-11204-011	2
	ISI-11204-012	6
	ISI-11204-014 (Sh. 1)	0
	ISI-11204-014 (Sh. 2)	1
	ISI-11204-037 (Sh. 1)	2
	ISI-11204-037 (Sh. 2)	2
	ISI-11204-037 (Sh. 3)	0

PIPING DRAWINGS - (continued)

<u>System</u>	<u>Drawing Number</u>	<u>Drawing Revision Number</u>
Safety Injection (continued)	ISI-11204-057 (Sh. 1)	3
	ISI-11204-057 (Sh. 2)	4
	ISI-11204-057 (Sh. 3)	3
	ISI-11204-125	1
Residual Heat Removal	ISI-11205-003 (Sh. 1)	4
	ISI-11205-003 (Sh. 2)	4
	ISI-11205-004	5
	ISI-11205-005	5
	ISI-11205-006	6
	ISI-11205-007 (Sh. 1)	4
	ISI-11205-007 (Sh. 2)	6
	ISI-11205-008 (Sh. 1)	4
	ISI-11205-008 (Sh. 2)	5
	ISI-11205-009	3
	ISI-11205-010	4
Contaminant Spray	ISI-11206-008	0
Chemical and Volume Control	ISI-11208-022 (Sh. 1)	2
	ISI-11208-046	1
	ISI-11208-047	3
	ISI-11208-123 (Sh. 1)	2
	ISI-11208-123 (Sh. 2)	2
	ISI-11208-137	5
	ISI-11208-139 (Sh. 1)	5
	ISI-11208-141	4
	ISI-11208-146	1
	ISI-11208-410	0
	ISI-11208-411	4
Main Steam	ISI-11301-104	3
	ISI-11301-105	2
	ISI-11301-106	2
	ISI-11301-107	3
Auxiliary Feedwater	ISI-11302-107	5
	ISI-11302-108	5
	ISI-11302-109	6
	ISI-11302-110	4
Condensate and Feedwater	ISI-11305-058	2
	ISI-11305-060	2
	ISI-11305-062	3
	ISI-11305-064	2
	ISI-11305-156	2

SCALING RULES 8

7

6

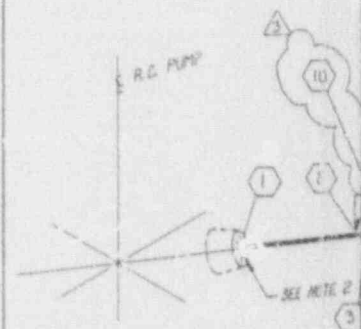
EQUIPMENT WELD IDENTIFICATION NO.	WELD OR EQUIP DESCRIP	PART EXAMINED (SEE NOTE NO. 1)	EXAM. REQUIRE- MENT FIG.	EXAMINATION METHOD AND ITEM NO.					
				VOL.	SURF.	VT1	VT2	VT3	VT4
W010	BW	CLIP WELD	IWB-2500-8	89.11	89.11	---	89.11	---	---
W011	BW	CLIP WELD	IWB-2500-8	---	89.12	---	---	---	---
W012	BW	CLIP WELD	IWB-2500-8	---	---	---	---	---	---
W013	BW	CLIP WELD	IWB-2500-8	---	---	---	---	---	---
W014	BW	CLIP WELD	IWB-2500-8	---	---	---	---	---	---
W015	BW	CLIP WELD	IWB-2500-8	---	---	---	---	---	---
W016	BW	CLIP WELD	IWB-2500-8	---	---	---	---	---	---
W017	BW	CLIP WELD	IWB-2500-8	---	---	---	---	---	---
W018	BW	CLIP WELD	IWB-2500-8	---	---	---	---	---	---

D

C

B

A



REACTOR COOLANT
PUMP

SEE 151-11201-P6-007

REVISION	DATE	REVISION	DATE	REVISION	DATE
					8-11-92
DELETED LINE 11201-021 PER DCP 91-V-12009 ADDED 2" THERMOWELL (WELD 10) ADDED NEW REF DRAWING					
BY	CHKD	APPR.1	APPR.2	APPR.3	APPR.4
BY	CHKD	APPR.1	APPR.2	APPR.3	APPR.4

8

7

6

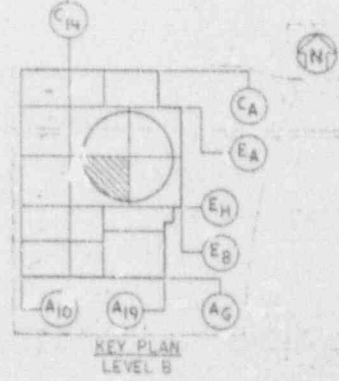
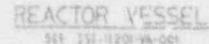
LEGEND:

- ## REFERENCE DWGS.

NOTES

- SI
APERTURE
CARD

Also Available On
Aperture Card



Southern Company Services, Inc.																		
Georgia Power Company																		
REV. 2	DATE 5-18-87	REVISION 1	DATE 3-15-85	REVISION 0	DATE 3-13-84	VOGTLE ELECTRIC GENERATING PLANT UNIT 1-LINE NO. 012 INSUR/ICE INSPECTION ISOMETRIC REACTOR COOLANT SYSTEM 1201												
GENERAL REVISION TO UPDATE FOR ISI		ADDED NEW WELD NO'S, 27.9" CAL. BLOCK, ISI CLASSIFICATION DWG.			ISSUED FOR INSPECTION													
DESIGNED BY	CHECKED BY	APPROVED BY	APPROVED BY	APPROVED BY	APPROVED BY	BY	DATE	APPROVED BY	APPROVED BY	APPROVED BY	APPROVED BY	APPROVED BY	APPROVED BY	APPROVED BY	APPROVED BY	APPROVED BY	APPROVED BY	
000	000					000	05/18/87	000	000	000	000	000	000	000	000	000	000	
4 3 2 1																		

9211160107-01

SCALE RULES 8

7

6

EQUIPMENT OR WELD IDENTIFICATION NO.	WELD OR EQUIP DESCRIP	PART EXAMINED (SEE NOTE NO 1)	EXAM REQUIRE- MENT FIG.	EXAMINATION METHOD AND ITEM NO.					
				VOL.	SURF.	VT1	VT2	VT3	VT4
11201-011-W01.0	BSW	CIRC. WELD	1WB-2500-6	B9.11	B9.11	---	B9.30	---	---
W01.1	FLUC. PEN	FL. REF	1WB-2500-10	---	B9.32	---	---	---	---
W01.2	---	---	---	---	---	---	---	---	---
W01.3	---	---	---	---	---	---	---	---	---
W01.4	---	---	---	---	---	---	---	---	---
W01.5	---	---	---	---	---	---	---	---	---
W01.6	---	---	---	---	---	---	---	---	---
W02.0	---	---	---	---	---	---	---	---	---



C

B

A

REVISION	DATE	REVISION	DATE	REVISION	DATE
					8-11-97
DELETED LINE 11201-27 PER DCP 91-VI00009 ADDED 2" THERMOWELL (WELD 9) ADDED NEW REF DRAWING					
BY	DATE	APPROV. 1	APPROV. 2	APPROV. 3	APPROV. 4

8

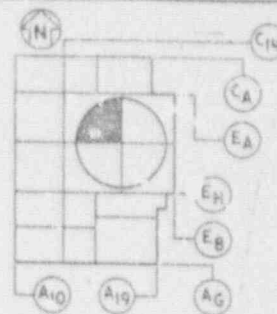
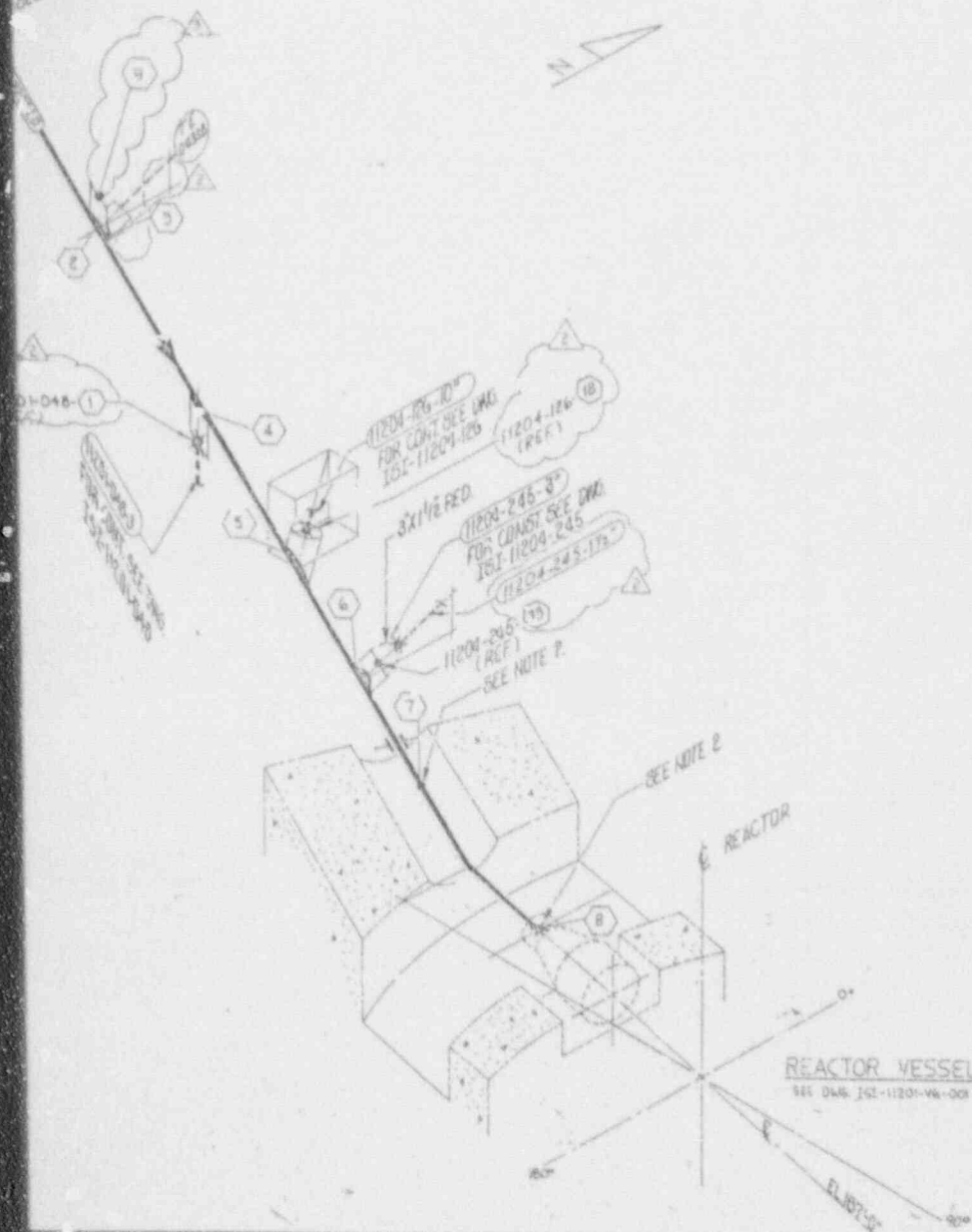
7

6

LINE NUMBER	CLASS	PIPE CLASS	PIPE SIZE	PIPE SCHED	WALL THKN	MAT'L	DESIGN PRESS	DESIGN TEMP	OPERT PRESS	OPERT TEMP	INSUL THKN
11201-011	I	III	FGD	27.5"	SPCL	2.3"	2485	960	2300	556	3.0

REACTOR COOLANT PUMP
SEE DWG 151-116-J1-P8-003

SEE NOTE 2



KEY PLAN
LEVEL B

- LEGEND:
- 1. X INDICATES FIELD WELD.
 - 2. • INDICATES SHOP WELD.
 - 3. — INDICATES BRANCH CONN. WELD.
 - 4. — INDICATES PIPE SUPPORT.
 - 5. — INDICATES PIPE RESTRAINT.

REFERENCE DWGS.

P&ID	11201-011
PIPING AREA DWG.	11201-012
C/VIL/STRUCTURAL DWG.	11201-010
TUBECO DWG.	11201-002, 004
COLD LEG-LOOP 9	11201-014
2" RTD MANIFOLD CONN.	11201-014
2-1/2" THERMOWELL CONN.	11201-014
3" SIS & CYCS CONN.	11201-015
2-1/2" LQ. 1/2" END PREP.	11201-016

ESD DWG:

2-1/2" LQ. ELBOW TO PIPE END	11201-092
2-1/2" LQ. ELBOW TO NOZZLE	11201-093
2-1/2" LQ. ELBOW DETAIL	11201-097
10" ACCUMULATOR INJ. CONN.	11201-048

W. DWG. 11201-011 RCS COLD LEG THERMOWELL JDR 1932 R2

- NOTES:
- SEE 1ST PLAN FOR SELECTION AND FREQUENCY OF EXAMINATIONS.
 - FOR WELD END PREP OF PIPE AND ELL SEE DWG. 151-11201-009.

SI
APERTURE
CARD

Also Available On
Aperture Card

DATE 5-18-87	REVISION 1	DATE 3-15-85	REVISION 0	DATE 5-14-84	REVISION 0
GENERAL REV. TO UPDATE DWG. FOR ISI	ADDED NEW WELD NUMBERS AND REFERENCE DRAWING PUT REDUCER ON LINE 245 WELD WAS WD	ISSUED FOR INSPECTION			
DESIGNED BY	DESIGNED BY	DESIGNED BY	DESIGNED BY	DESIGNED BY	DESIGNED BY
APPROVED BY	APPROVED BY	APPROVED BY	APPROVED BY	APPROVED BY	APPROVED BY
DATE 9/9/87	DATE 9/9/87	DATE 9/9/87	DATE 9/9/87	DATE 9/9/87	DATE 9/9/87
4	3	2	1		

Southern Company Services, Inc.					
FOR					
Georgia Power Company					
VOGTLE ELECTRIC GENERATING PLANT					
UNIT 1-LINE NO. 011					
INSERVICE INSPECTION ISOMETRIC					
REACTOR COOLANT-SYSTEM 1201					
DESIGNED BY	F 1	DESIGNED BY	DRG	DESIGNED BY	W 5
SCALE		PROJECT NO.		DRAWING NUMBER	
NONE				151-11201-011	3

9211160107-02

SCALING RULES

8

7

6

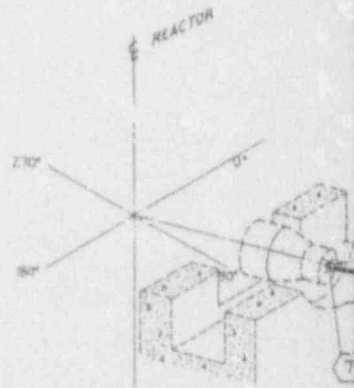
EQUIPMENT OR WELD IDENTIFICATION NO.	WELD OR EQUIP DESCRIP	PART EXAMINED PAGE NOTE NO. 12	EXAM. REQUIRE- MENT FIG.	EXAMINATION METHOD AND ITEM NO.					
				YOL	SURE	1	VT2	VT9	VT4
11201-010-0010	B.W.	SIZE	148-2500-8	89.11	89.11	---	15.89	---	---
NO1.1	WELD	WELD	148-2500-10	---	89.32	---	---	---	---
NO1.2	WELD	WELD	---	---	89.32	---	---	---	---
NO1.3	WELD	WELD	---	---	89.31	---	---	---	---
NO1.4	WELD	WELD	---	---	89.32	---	---	---	---
NO1.5	B.W.	SIZE	148-2500-8	89.11	89.11	---	---	---	---
NO2.0	B.W.	---	---	89.11	89.11	---	---	---	---

D

C

B

A

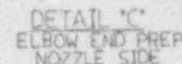
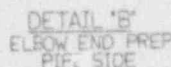


REACTOR VESSEL
SEE DWG. 151-11201-VB-001

REVISION		DATE		REVISION		DATE		REVISION		DATE	

9211160107-03

REACTOR VESSEL
SEE 151-11201-46-001



A	REVISION							DATE							REVISION 9							DATE 8-11-92						
															DELETED LINE 11E1-025 REL DCP #1-VI00009 ADDED 2" THERMOWELL (FIELD 10) ADDED NEW REF DRAWING													
	BT	CHK'D	APPR. 1	APPR. 2	APPR. 3	APPR. 4	APPR. 5	BT	CHK'D	APPR. 1	APPR. 2	APPR. 3	APPR. 4	APPR. 5	BT	CHK'D	APPR. 1	APPR. 2	APPR. 3	APPR. 4	APPR. 5							
																GS	DR	DR										

LINE NUMBER	CLASS	PIPE CLASS	LINE SIZE	PIPE SCHED	WALL THKN	MAT'L TYPE	DESIGN PRESS	DESIGN TEMP	OPERT PRESS	OPERT TEMP	INSUL THKN
1120-009	1	HL	F60	27.5" 2 R	SPCL	2.32 NOM	SA-351 CBA	2485	450	2301	536 3.0

LEGEND

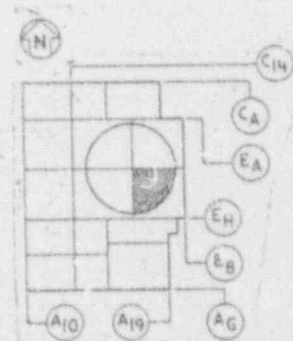
- 1 ■ INDICATES FIELD WELD.
- 2 ● INDICATES SHOP WELD.
- 3 ▲ INDICATES BRANCH CONNECTION WELD.

REFERENCE DWGS

P&ID	---	1120B11
PIPING AREA DWG	---	1120L1A17/19
CIVIL/STRUCTURAL DWG	---	1120H1F001
TUBECO DWG	---	
COLD LEG LOOP 1	---	1120B17-144
2" RTD MANIFOLD CONNECTION	---	1120A06-14
2" V2" THERMOWELL CONNECTION	---	1120B17-104
7" SIS CVCS & CHG PUMP CONN	---	1120A06-15
4" PRESSURIZER SPRAY CONNECTION	---	1120A06-15
27" V2" ID PIPE END PREP	---	1120B17-106
ESCO DWG	---	
27" V2" ID ELBOW TO PIPE END PREP	---	1120B17-092
27" V2" ID ELBOW TO NOZZLE END PREP	---	1120B17-093
27" V2" ID ELBOW DETAIL	---	1120B17-077
10X15" ACCUMULATOR INLT CONN	---	1120B17-046
1" DWG RCS COLD LEG THERMOWELL	---	1120B17-02

NOTES

- 1 SEE ISI PLAN FOR SELECTION AND FREQUENCY OF EXAMINATIONS.



KEY PLAN
LEVEL B

Southern Company Services, Inc.

Georgia Power Company

MOGTE ELECTRIC GENERATING PLANT
UNIT 1-LINE NO.009
INSERVICE INSPECTION ISOMETRIC
REACTOR COOLANT-SYSTEM 1201

DESIGNED BY	DRW'D BY	BY	1120 W.S.
SCALE	PROJECT NO.	DRAWING NUMBER	REV.
NONE		ISI-11201-009	3

ISI APERTURE CARD

Also Available On
Aperture Card

REACTOR COOLANT PUMP
ISI 11201-14-001

9211160107-04