



52-001

GE Nuclear Energy

ABWR

Date 5/15/92Fax No. —

To

Chet PoslusnyThis page plus 13 page(s)From Jack FoxMail Code 782175 Curtner Avenue
San Jose, CA 95125Phone (408) 925-4824FAX (408) 925-1193
or (408) 925-1687Subject Plant Systems Open ItemsMessage Chet-Attached are selected responses
to the subject open items
we discussed in Rockville
on May 5 & 6.

050073

JackCONTAINS PROPRIETARY INFORMATION9206300011 920515
PDR ADDCK 05200001
A PDRChange 41 incl
w/out
NRC PDR
PDR Stegbauer, E. Hoff
2050
1/1

ABWR Standard Plant

23A6100AT

REV. B

6.2.5 & 9.3.1

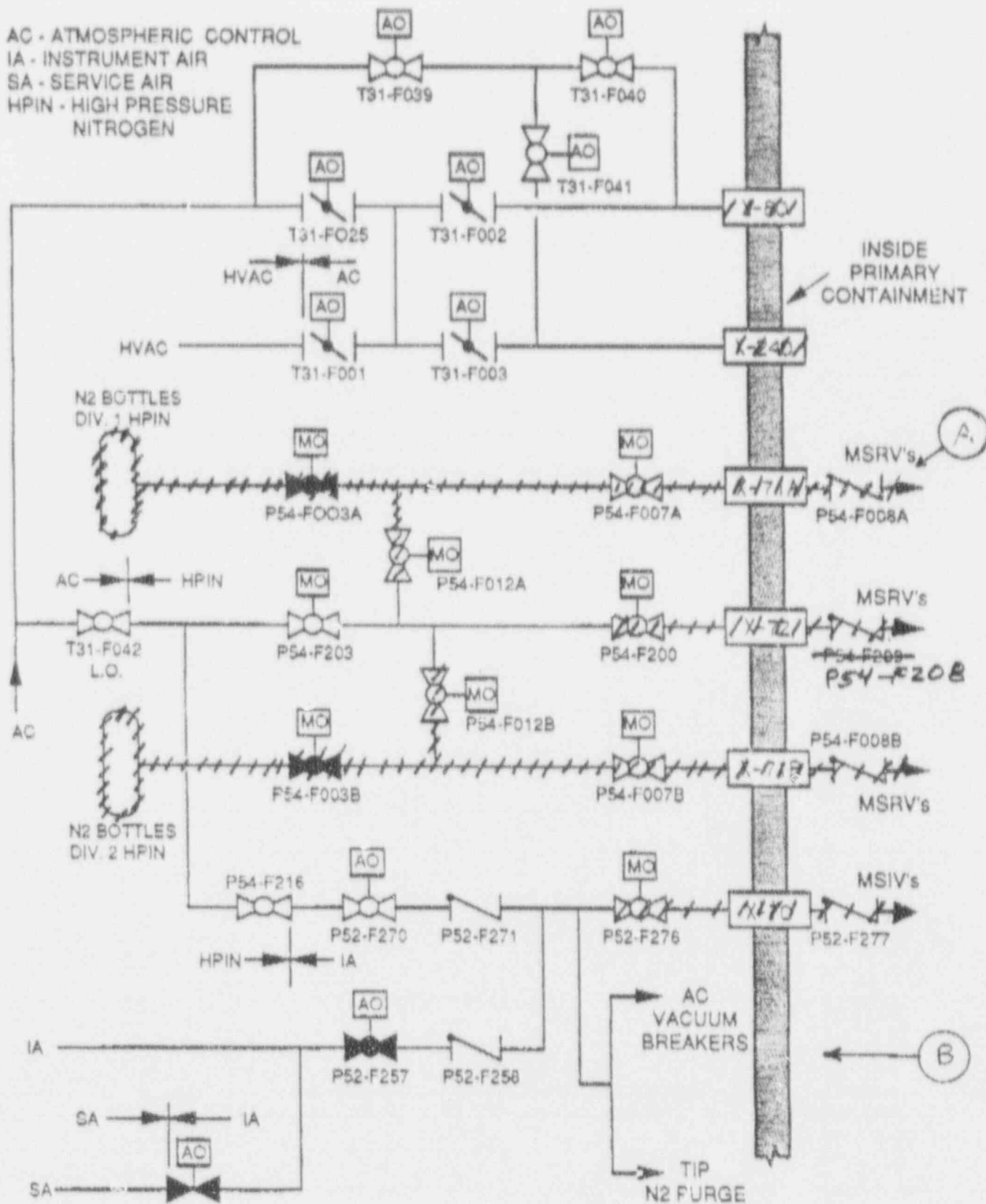


Figure 20.3 - 55 COMPRESSED GAS SYSTEMS INTERCONNECTIONS
(Response to Question 430.217)

(A) Safety related piping, valves and components have been shown by cross hatching.

(B) During normal operation
The non-essential nitrogen users within containment are downstream of P52-F277 and P54-F208. (The essential nitrogen users are downstream of P54-F008A and B.) Should the AC/HPIN systems become unable to supply nitrogen to the non-essential users downstream of P52-F277, the operator may remote manually open P52-F257 to supply instrument air to these users. (See Figure 20.3-55).