

**GPU Nuclear Corporation**

Post Office Box 388  
Route 9 South  
Forked River, New Jersey 08731-0388  
609 971-4000  
Writer's Direct Dial Number:

Dr. Thomas E. Murley, Administrator  
Region I  
U. S. Nuclear Regulatory Commission  
631 Park Avenue  
King of Prussia, PA 19406

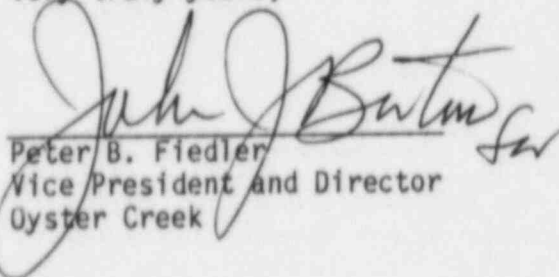
Dear Dr. Murley:

Subject: Oyster Creek Nuclear Generating Station  
Docket No. 50-219  
Thirty-Ninth Quarterly Report

In accordance with Section 3.1 of the Oyster Creek Environmental Technical Specifications, GPU Nuclear Corporation submits two (2) copies of the subject report on the "Study of Woodborer Populations in Relation to the Oyster Creek Nuclear Generating Station" by R. E. Hillman and C. I. Belmore. This report covers the period November 1, 1984 to January 31, 1985.

If you have any questions concerning this report, please do not hesitate to contact Mr. Douglas Moore of our Licensing and Regulatory Affairs Department at (609) 971-4630.

Very truly yours,



Peter B. Fiedler  
Vice President and Director  
Oyster Creek

PBF:DM:dam(0146A)  
Enclosures

cc: Director (17 copies)  
Office of Nuclear Reactor Regulations  
U. S. Nuclear Regulatory Commission  
Washington, D.C. 20555  
C/o Distribution Services Branch, DDC, ADM

N. J. Bureau of Radiation Protection  
Attention: Chief  
Division of Environmental Quality  
United Sierra Building  
380 Scotch Road  
West Trenton, NJ 08625

8503280279 850318  
PDR ADOCK 05000219  
R PDR

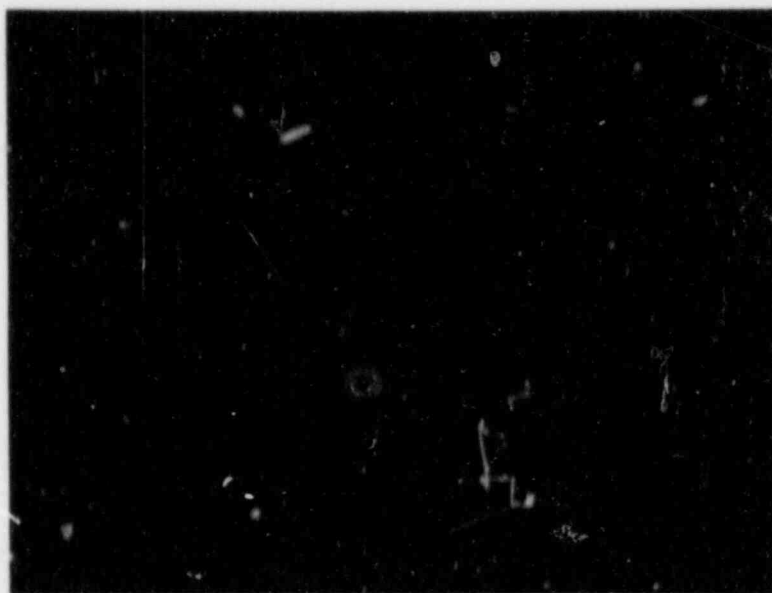
GPU Nuclear Corporation is a subsidiary of the General Public Utilities Corporation

11 IE25



**Battelle**

New England  
Marine Research  
Laboratory



Report