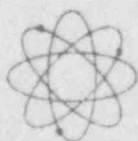
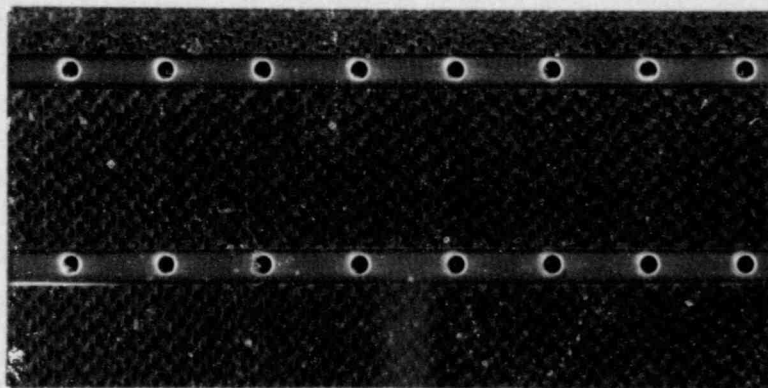


EFFLUENT AND WASTE DISPOSAL SEMIANNUAL
REPORT
RADIOLOGICAL IMPACT ON MAN
FOR
THIRD AND FOURTH QUARTERS, 1984

VERMONT YANKEE NUCLEAR POWER STATION

8503250291 841231
PDR ADOCK 05000271
R PDR



VERMONT YANKEE NUCLEAR POWER CORPORATION
VERMONT YANKEE NUCLEAR POWER STATION
VERNON, VERMONT

IE25
11

ERRATA

The following change should be made to the Vermont Yankee Effluent and Waste Disposal Semiannual Report covering the First and Second Quarters, 1984:

Table 1B; Strontium-89 gaseous release should be changed from 2.17 E-06 to 2.82 E-05 for the first quarter.

TABLE OF CONTENTS

| | <u>Page</u> |
|--|-------------|
| 1.0 INTRODUCTION..... | 1 |
| 2.0 METEOROLOGICAL DATA..... | 2 |
| 3.0 RADIOACTIVITY RELEASES..... | 3 |
| 3.1 Liquid Releases..... | 3 |
| 3.2 Gaseous Releases..... | 3 |
| 4.0 DOSE ASSESSMENT..... | 4 |
| 4.1 Organ Doses to Individuals from Receiving-Water Exposure Pathways..... | 4 |
| 4.2 Individual Whole-Body and Skin Doses from Noble Gaseous Effluents..... | 4 |
| 4.3 Organ Doses to Individuals from Radioactive Iodine and Particulates in Gaseous Effluents..... | 6 |
| 4.4 Whole-Body Doses in Unrestricted Areas from Direct Radiation..... | 8 |
| 4.5 Whole-Body Doses to the General Population from all Receiving Water Related Pathways..... | 9 |
| 4.6 Doses to the General Population and Average Individual within Fifty Miles from Gaseous Effluents..... | 9 |
| REFERENCES..... | 11 |
| FIGURES..... | 12-13 |
| TABLES..... | 14-43 |
| APPENDIX A - SUPPLEMENTAL INFORMATION..... | A1 |

LIST OF TABLES

| <u>Table No.</u> | <u>Title</u> |
|------------------|--|
| 1A | Gaseous Effluents - Summation of all Releases |
| 1B | Gaseous Effluents - Elevated Releases |
| 1C | Gaseous Effluents - Routine Ground Level Releases |
| 1D | Gaseous Effluents - Non-Routine Releases |
| 2A | Liquid Effluents - Summation of all Releases |
| 3 | Solid Waste and Irradiated Fuel Shipments |
| 4-A to 4-H | Vermont Yankee Joint Frequency Distribution July - September 1984 |
| 5-A to 5-H | Vermont Yankee Joint Frequency Distribution October - December 1984 |
| 6 | Quarterly Average X/Q and D/Q Values for Selected Receptors |
| 7 | Summary of Radiological Impact on Man |

LIST OF FIGURES

Figure No.

Title

- | | |
|----|---|
| 1A | Vermont Yankee, July - September 1984, Upper Level Wind Rose |
| 1B | Vermont Yankee, October - December 1984, Upper Level Wind Rose |

VERMONT YANKEE
EFFLUENT AND WASTE DISPOSAL SEMIANNUAL REPORT
RADIOLOGICAL IMPACT ON MAN
THIRD AND FOURTH QUARTERS 1984

1.0 INTRODUCTION

Using actual measured effluent and meteorological data for the second six months of 1984, this report estimates potential doses from radioactive effluents that could affect individuals and the general population near the Vermont Yankee Nuclear Power Station. Tables 1 through 3 list the recorded radioactive effluents and solid waste for this semiannual period. Tables 4 and 5 report the cumulative joint frequency distribution of wind speed, wind direction, and atmospheric stability observed during the second half of 1984. Figures 1A and 1B summarize wind speed and direction in a wind rose. Table 6 lists the calculated X/Q and D/Q values at different points of interest based on the meteorological record presented in Tables 4 and 5 for both quarters. Table 7 summarizes the potential radiological dose commitments to individuals and the general population surrounding the plant. Supplemental information concerning the plant's regulatory release limits and the methods used in measuring released radioactivity is given in Appendix A. All estimates of potential dose for the second six months of 1984 were within the dose objectives set forth in Appendix I to 10CFR50. During the second half of 1984 the plant realized capacity factors (design MWe) of 29.2 percent and 99.8 percent for the third and fourth quarters, respectively.

2.0 METEOROLOGICAL DATA

Meteorological data was collected during this reporting period from the site's 300-foot met tower located approximately 2,200 feet northwest of the reactor building, and about 1,400 feet from the plant stack. The 300-foot tower is approximately the same height as the primary plant stack (94 meters) and is designed to meet the requirements of Regulatory Guide 1.23 for meteorological monitoring. Combined data recoverability for the third and fourth quarters was 98.3 percent and 99.2 percent, respectively.

X/Q and D/Q values were derived for all receptor points from the site meteorological record for each quarter using a straight-line airflow model. All dispersion and air concentration factors have been calculated employing appropriate source configuration considerations, as described in Regulatory Guide 1.111 (Reference 1), plus a source depletion model as described in "Meteorology and Atomic Energy - 1968" (Reference 2), and deposition velocities as given by Pelletier and Zimbrick (Reference 3). Changes in terrain elevations in the site environment were also factored into meteorological models. A full description of the methods used to evaluate air dispersion phenomenon at the plant site is given in Vermont Yankee's 10CFR Part 50, Appendix I evaluation (Reference 4).

3.0 RADIOACTIVITY RELEASES

3.1 Liquid Releases

There were no liquid releases of radioactivity from the plant during this semiannual period.

3.2 Gaseous Releases

All gaseous effluent recorded for the second half of the year are listed in Tables 1A through 1D. All gaseous effluents were recorded as continuous in nature, and were released to the environment via the 94 meter stack located approximately 875 feet north of the reactor building. As indicated in Table 1A, all gaseous effluents were well within the plants operating Technical Specification for gaseous releases of radioactivity.

In addition, there were no unplanned or non-routine releases of radioactivity in gaseous effluents during this reporting period.

4.0 DOSE ASSESSMENT

Following the guidance of NUREG-0473 (Reference 7), nuclides in particulate form which were not detected above the lower limit of detection (LLD) have been reported as "less than" the LLD and have not been included in the dose calculations. However, the release rate of noble gases from the plant stack, after treatment of the gas stream from the air ejector through the augmented off-gas system, is so low that no noble gases are detectable above the LLD. Therefore, as a conservative approach for the noble gas releases, it has been assumed for dose calculation purposes that the principal noble gases measured in the off-gas mix at the air ejector are present at the LLD level determined for the plant stack.

4.1 Organ Doses to Individuals from Receiving-Water Exposure Pathways

There were no routine or accidental liquid releases from Vermont Yankee during the second half of 1984. As a result, no receiving water exposure pathways could contribute to any whole body or organ doses to individuals in unrestricted areas.

4.2 Individual Whole-Body and Skin Doses from Noble Gaseous Effluents

Based on the method of sector averaging discussed in "Meteorology and Atomic Energy - 1968" (Reference 2), and utilizing the site meteorological data recorded for this reporting period, the point of maximum off-site ground level air concentration of radioactive materials in gaseous effluents was determined for each quarter. Terrain height in the vicinity of the effluent stack was taken into account in calculating these effluent ground level concentrations. For both the third and fourth quarters of 1984 the point of maximum off-site ground level air concentration was determined to be in the NW sector, approximately 2900 meters from the plant stack. The undepleted X/Q 's at these locations were calculated to be $6.8E-07 \text{ sec/m}^3$ and $6.3E-07 \text{ sec/m}^3$ for the third and fourth quarters of the year, respectively.

Whole-body and skin doses were calculated at these off-site points as a result of noble gas releases occurring in both quarters. The methodology applied to the dose calculations is consistent with that of Regulatory Guide 1.109 (Reference 5) for an elevated release point. Dose conversion factors for noble gases and daughters were taken from Table B-1 of this Regulatory Guide. For the beta contribution to the skin dose, a semi-infinite cloud model was used. The whole-body gamma dose was evaluated using a finite cloud sector average model with Gaussian activity distribution in the vertical plane. The gamma radiation received at a point of interest from a differential volume of the cloud is calculated. The radiation is then integrated over the entire cloud, taking into account the geometry of the cloud, variation in concentration, attenuation by the interaction of photons with matter in the path between source and the receptor point, and scattering of radiation from material outside the direct path to the point of interest. An attenuation factor of 0.7 is also applied to the dose calculations to account for the dose reduction due to shielding which would be provided by a residential structure. No additional credit is taken for decay of radionuclides in transit to the receptor point.

For the third quarter, the skin and whole-body doses from exposure to noble gases at the point of maximum ground level air concentration were calculated to be $5.4\text{E-}02$ mrem and $2.0\text{E-}02$ mrem, respectively. For the noble gas effluents during the fourth quarter, the skin and whole-body doses at the point of maximum ground level air concentration were calculated to be $9.6\text{E-}02$ mrem and $3.5\text{E-}02$ mrem, respectively.

In addition, the maximum nearest resident and maximum site boundary whole-body and skin doses have been calculated due to noble gas effluents from the plant stack during the reporting period. The maximum site boundary whole-body and skin doses ($6.6\text{E-}02$ and $7.8\text{E-}02$ mrem respectively) for the third quarter of 1984 occurred in the South sector, 400 meters from the stack. The fourth quarter maximum site boundary whole-body and skin doses ($1.1\text{E-}01$ mrem and $12\text{E-}01$ mrem, respectively) also occurred in the South sector 400 meters from the stack. For the third quarter, the maximum nearest resident whole-body and skin doses ($4.9\text{E-}02$ mrem and $5.8\text{E-}02$ mrem, respectively) in any direction were determined to be in the South sector, 550 meters from the plant stack. As a result of the fourth quarter meteorology

and noble gas effluents, the maximum nearest resident whole-body and skin doses ($7.7\text{E}-02$ and $8.9\text{E}-02$ mrem respectively) in any sector also occurred in the South sector, 550 meters from the plant stack.

The resultant doses due to noble gas effluents for the maximum site boundary location, maximum nearest resident, and point of maximum ground level air concentration are tabulated in Table 7. All doses are conservative in that they assume 100 percent occupancy at each point. Whole-body doses consider the gamma radiation received from the effluent plume overhead. The skin doses consider both the beta and gamma contributions at the receptor point. All doses from noble gaseous effluents are well below the dose criteria of 10CFR50, Appendix I.

4.3 Organ Doses to Individuals from Radioactive Iodine and Particulates in Gaseous Effluents

The critical pathway of internal exposure to radioactive iodine and particulates, including tritium, resulting from gaseous effluents for the third quarter is through the grass-milk pathway. It is assumed that milk animals are free to graze on open pasture during the third quarter with no supplemental feeding. This assumption is conservative since most of the milk animals inventoried in the site vicinity are fed stored feed throughout the entire year with only limited grazing allowed during the growing season. It has also been assumed that only 50 percent of the iodine deposited from gaseous effluent is in elemental form (I_2) and is available for uptake. This assumption is conservative for long-term doses (see p. 26, Reference 5).

During the winter months of the year, the dose commitment through the milk pathway and fresh vegetable ingestion is insignificant. The maximum length of annual growing season is approximately six months long in this part of New England. Therefore, the milk pathway and vegetable ingestion doses for the fourth quarter are the result of activity deposited on feed and vegetables grown during the growing season and allowed to decay while held in storage. As a result, the critical pathway of exposure for radioactive iodine and particulates during the fourth quarter is through inhalation.

As a result of the milk and fresh vegetable pathways, the maximum dose for the third quarter from gaseous releases of radioactive iodine and particulates was determined to occur at a farm 3000 meters west-northwest of the plant. The critical organ was a infant's thyroid with a calculated dose of approximately $3.0\text{E}-02$ mrem. For the fourth quarter, with inhalation being the principal pathway of exposure, the maximum organ dose was projected to be at a farm 5600 meters south-southeast of the plant. The critical organ was the liver of a child, with a calculated dose of $5.2\text{E}-04$ mrem. The pathways of exposure which were assumed to exist during the fourth quarter at this farm include ground plane exposure, inhalation, and contributions from stored vegetables and milk. The pathways of exposure considered at the maximum farm location during the third quarter include continuous ground plane exposure, inhalation fresh home grown vegetables, meat, and cow's milk.

Table 7 shows the maximum calculated quarterly organ dose due to the combination of exposures from all pathways which have been identified at the two farms. Table 7 also shows the calculated organ doses to the highest exposed nearby resident, and potential organ doses to individuals if assumed standing at the highest ground level air concentration point on the site boundary for the entire six-month reporting period. The site boundary doses include only exposure from inhalation, and direct radiation from the ground plane. The nearest resident is assumed to have a vegetable garden during the growing season which contributes to his or her ingestion dose. For all ground plane exposures, the activity is assumed to accumulate on the ground for 15 years at the rate equivalent to that observed during each quarter. This is a simplified method of approximating the average deposition over the life of the plant. The calculated dose from direct exposure to activity on the ground thus represents the dose an individual would see in each quarter if the plant had been operating 15 years. This approach is very conservative, but shows the relative impact the plant would have on the dose commitment over its operating life if the releases were to continue at the levels recorded during this reporting period.

The maximum critical organ dose for the third quarter for the nearest resident was to the thyroid of a child. This dose was calculated to be $9.8\text{E}-04$ mrem (SSE, 2100 meters). The maximum critical organ dose for the fourth quarter for the nearest resident was also to the liver of a child. The

dose to this critical organ was calculated to be $2.1\text{E}-04$ mrem (SSE, 2100 meters).

The critical organ for the third quarter for the maximum site boundary location was to the thyroid of a child. The dose to this critical organ was calculated to be $1.5\text{E}-04$ mrem (SSE, 850 meters). The critical organ for the fourth quarter for the maximum site boundary location was to the skin, equally to all age groups. This dose was calculated to be $6.2\text{E}-05$ mrem (SSE, 850 meters).

4.4 Whole-Body Doses in Unrestricted Areas from Direct Radiation

The major source of direct radiation (including sky shine) from the station is due to N-16 decay in the turbine building. Because of the orientation of the turbine building on the site, and the shielding effects of the adjacent reactor building, only the seven westerly sectors (SSW to NNW) see any significant direct radiation.

High pressure ionization chamber (HPIC) measurements have been made in the plant area in order to estimate the direct radiation from the station. The chamber was located at a point along the west site boundary which has been determined to receive the maximum direct radiation from the plant. Using measurements of dose rate made while the plant operated at different power levels, from shutdown to 100 percent, the total integrated dose from direct radiation over each three month period was determined by considering the quarterly gross megawatts generated. Field measurements of exposure, in units of Roentgen, were modified by multiplying by 0.6 to obtain whole-body dose equivalents, in units of rem, in accordance with recommendations of HASL report 305 (Reference 6) for radiation fields resulting from N-16 photons.

Estimates of the population exposure from direct radiation during the third and fourth quarters have been made out to two miles. Beyond two miles, the dose from the turbine building is negligible. As a result, the estimated population dose for each of the two quarters respectively was approximately $7.6\text{E}-03$ and $2.4\text{E}-02$ person-rem, for a total population of about 420 persons. The estimated direct radiation dose at the maximum site boundary location was approximately 1.2 mrem for the third quarter of 1984, and 3.6 mrem for the

fourth. These site boundary doses assume a 100 percent occupancy factor, taking no credit for the shielding effect of any structure. Table 7 summarizes these results.

4.5 Whole-Body Doses to the General Population from all Receiving Water Related Pathways

There were no routine or accidental liquid releases from Vermont Yankee during the second half of 1984.

4.6 Doses to the General Population and Average Individual Within Fifty Miles from Gaseous Effluents

Using site meteorological data in Tables 4 and 5, quarterly average X/Q values were determined for each sector formed by placing radial rings from the plant at distances of one, two, three, four, five, ten, twenty, thirty, forty and fifty miles, and their intersection with radial lines drawn to form each of the sixteen principal compass directions. For noble gases, whole-body and skin doses were calculated for each sector and multiplied by the estimated population within each sector to determine the sector person-rem. No credit for decay in transit of activity was assumed.

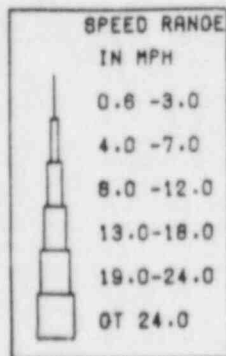
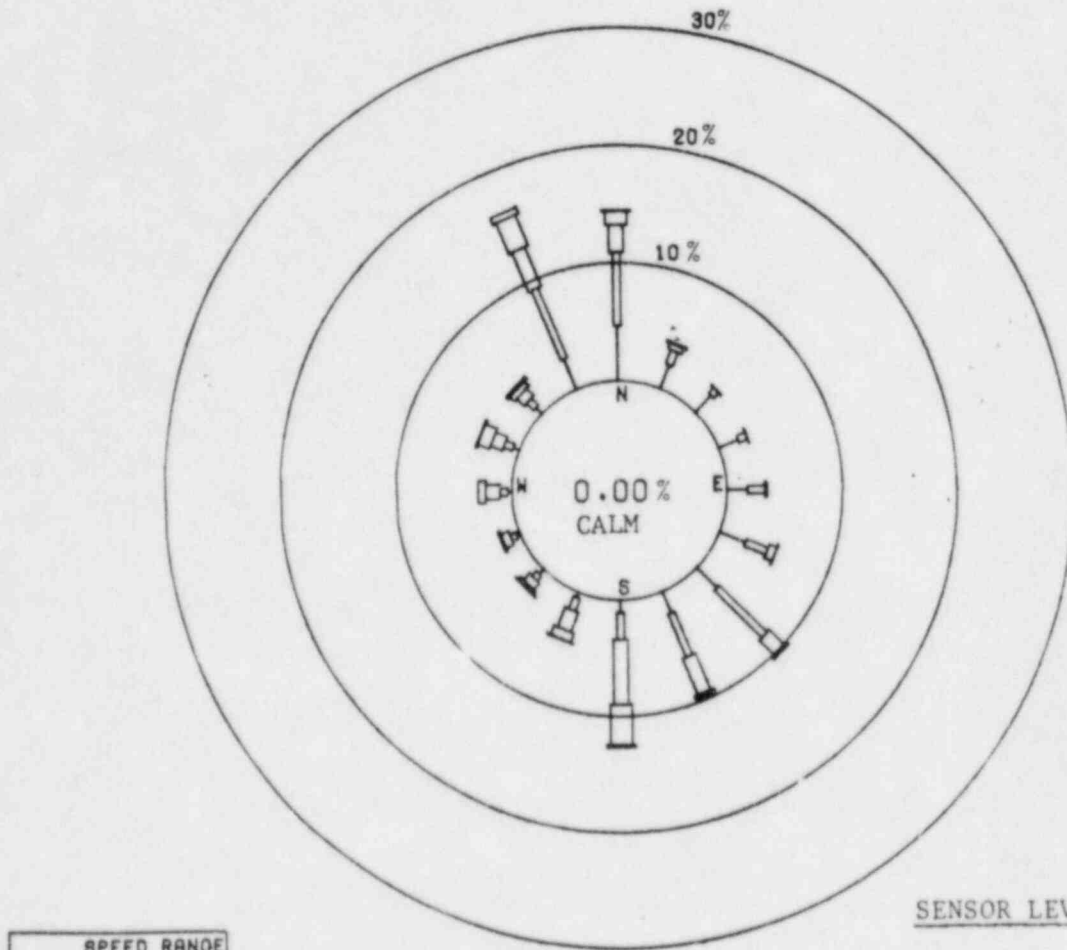
For the approximately $1.54\text{E}+06$ people within fifty miles of the plant, the third and fourth quarter whole-body doses from noble gas cloud exposure were estimated to be $5.2\text{E}-01$ person-rem and $9.5\text{E}-01$ person-rem, respectively. For the same two quarters, the average individual whole-body doses were $3.4\text{E}-04$ mrem and $6.1\text{E}-04$ mrem, respectively. The skin doses for the two quarters were 1.3 person-rem and 2.4 person-rem, respectively. The average individual skin dose was $8.6\text{E}-04$ and $1.5\text{E}-03$ mrem for the third and fourth quarters.

Table 7 also indicates the population whole-body and thyroid dose commitments from radioactive iodine and particulates (including tritium) released from the plant in gaseous waste. The pathways of exposure which have been considered for the 50 mile population include inhalation, ingestion of vegetables, milk and meat produced within 50 miles, and the direct exposure to activity deposited on the ground plane. The dose due to iodines in ingested

food is based on the assumption that only 50 percent of the iodines is elemental and available for uptake. The whole-body and thyroid dose commitments for the third quarter were calculated to be $9.6\text{E-}03$ person-rem and $8.5\text{E-}02$ person-rem, respectively. For the fourth quarter, the whole-body and thyroid dose commitments were $8.7\text{E-}03$ person-rem and $8.9\text{E-}03$ person-rem, respectively.

REFERENCES

1. Regulatory Guide 1.111, "Methods for Estimating Atmospheric Transport and Dispersion of Gaseous Effluents in Routine Releases from Light-Water-Cooled Reactors", U.S. Nuclear Regulatory Commission, Office of Standards Development, March 1976.
2. Meteorology and Atomic Energy, 1968, Section 5-3.2.2, "Cloud Depletion", pg. 204. U. S. Atomic Energy Commission, July 1968.
3. C. A. Pelletier, and J. D. Zimbrick, "Kinetics of Environmental Radiiodine Transport Through the Milk-Food Chain", Environmental Surveillance in the Vicinity of Nuclear Facilities, Charles D. Thomas Publishers, Springfield, Illinois, 1970.
4. "Supplemental Information for the Purposes of Evaluation of 10CFR Part 50, Appendix I", Vermont Yankee Nuclear Power Corporation, June 2, 1976.
5. Regulatory Guide 1.109, "Calculation of Annual Doses to Man From Routine Release of Reactor Effluents for the Purpose of Evaluating Compliance with 10CFR Part 50, Appendix I", U. S. Nuclear Regulatory Commission, Office of Standards Development, Revision 1, October 1977.
6. W. M. Lowder, P. D. Raft, and G. dePlanque Burke, "Determination of N-16 Gamma Radiation Fields at BWR Nuclear Power Stations", Health and Safety Laboratory, Energy Research and Development Administration, Report No. 305, May 1976.
7. NUREG-0473, "Radiological Effluent Technical Specifications for BWR's", Revision 2, July 1981; Table 4.11-1, Notation f.



SENSOR LEVELS

WIND SPEED = UPPER
 DIRECTION = UPPER
 DELTA TEMP = UPPER
 MISSING HOURS = 13

Figure 1A
 VERMONT YANKEE JUL-SEP 84
 UPPER LEVEL WIND

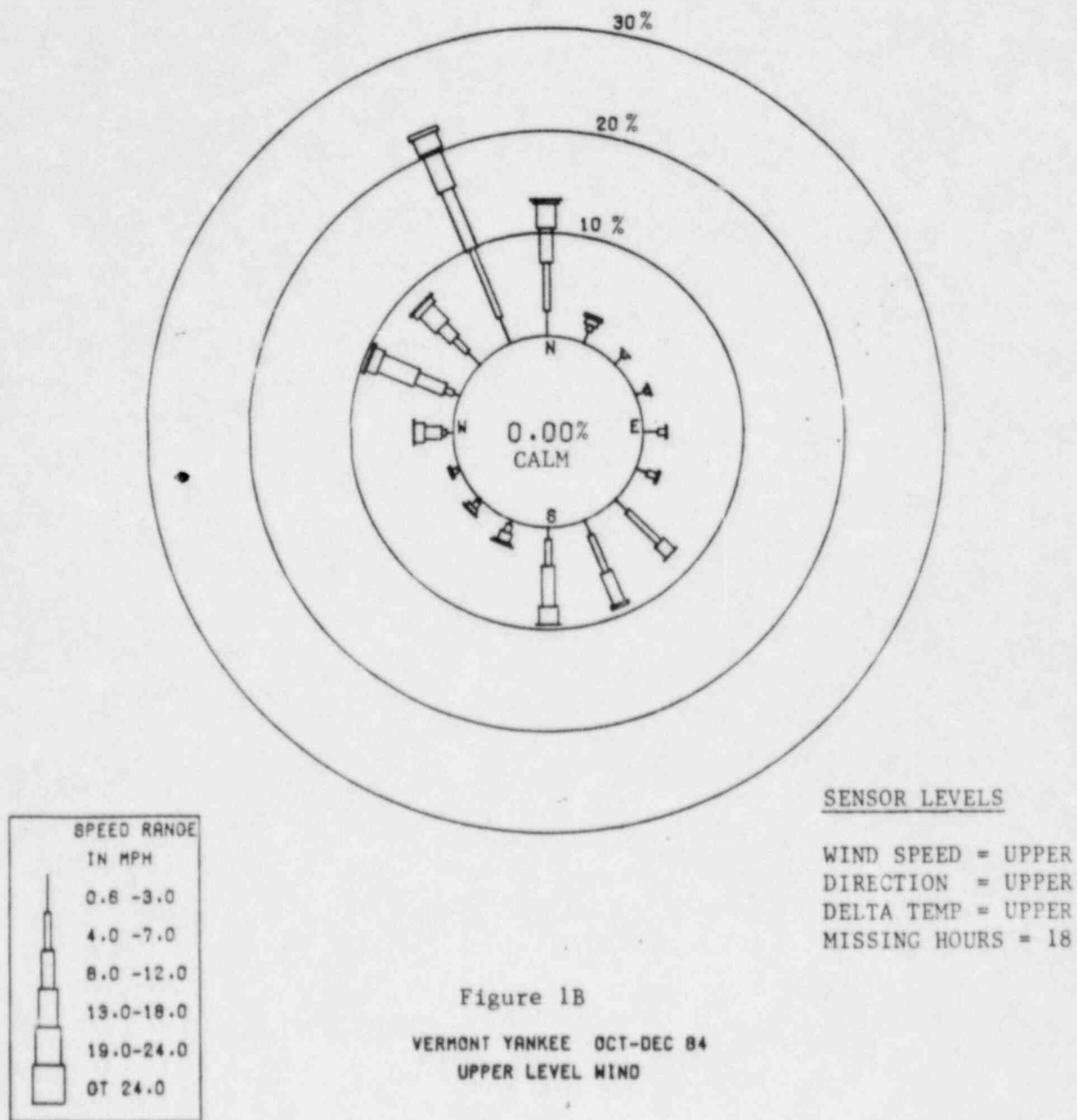


TABLE 1A
VERMONT YANKEE
EFFLUENT AND WASTE DISPOSAL SEMIANNUAL REPORT
THIRD AND FOURTH QUARTERS, 1984
GASEOUS EFFLUENTS - SUMMATION OF ALL RELEASES

| Unit | Quarter 3 | Quarter 4 | Est. total error, % |
|------|--------------|--------------|------------------------|
|------|--------------|--------------|------------------------|

A. Fission and activation gases

| | | | | |
|------------------------------------|---------|-----------|-----------|----------|
| 1. Total releases | Ci | <8.04E+02 | <7.95E+02 | 1.00E+02 |
| 2. Average release rate for period | uCi/sec | <1.02E+02 | <1.01E+02 | |
| 3. Percent of tech. spec. limit | % | <6.38E-02 | <1.39E-01 | |

B. Iodines

| | | | | |
|------------------------------------|---------|----------|----------|----------|
| 1. Total iodine-[I31] | Ci | 2.65E-03 | 1.31E-05 | 5.00E+01 |
| 2. Average release rate for period | uCi/sec | 3.37E-04 | 1.67E-06 | |
| 3. Percent of tech. spec. limit | % | 7.03E-02 | 3.47E-04 | |

C. Particulates

| | | | | |
|------------------------------------|---------|----------|----------|----------|
| 1. Particulates with T1/2 >8 days | Ci | 5.39E-04 | 6.25E-04 | 5.00E+01 |
| 2. Average release rate for period | uCi/sec | 6.86E-05 | 7.95E-05 | |
| 3. Percent of tech. spec. limit | % | 7.00E-03 | 1.18E-02 | |
| 4. Gross alpha radioactivity | Ci | 1.28E-06 | 1.09E-06 | |

D. Tritium

| | | | | |
|------------------------------------|---------|----------|----------|----------|
| 1. Total release | Ci | 2.60E+00 | 1.24E+00 | 5.00E+01 |
| 2. Average release rate for period | uCi/sec | 3.30E-01 | 2.22E-01 | |
| 3. Percent of tech. spec. limit | % | * | * | |

* Not applicable.

TABLE 12
VERMONT YANKEE
EFFLUENT AND WASTE DISPOSAL SEMIANNUAL REPORT
THIRD AND FOURTH QUARTERS, 1984
GASEOUS EFFLUENTS - ELEVATED RELEASES

| NUCLIDES RELEASED | Unit | Continuous Mode | | Batch Mode*1 | |
|-------------------|------|-----------------|--------------|--------------|--------------|
| | | Quarter 3 | Quarter 4 | Quarter 3 | Quarter 4 |

1. Fission gases

| | | | | | |
|------------------|----|-----------|-----------|--|--|
| krypton-85 | Ci | *2 | *2 | | |
| krypton-85m | Ci | <7.36E-01 | <2.11E+00 | | |
| krypton-87 | Ci | <7.49E+00 | <1.56E+01 | | |
| krypton-88 | Ci | <4.91E+00 | <1.04E+01 | | |
| xenon-133 | Ci | <4.42E+02 | <1.79E+00 | | |
| xenon-135 | Ci | <9.51E+00 | <2.10E+01 | | |
| xenon-135m | Ci | <6.44E+01 | <1.44E+02 | | |
| xenon-138 | Ci | <2.75E+02 | <6.00E+02 | | |
| Total for period | Ci | <8.04E+02 | <7.95E+02 | | |

2. Iodines

| | | | | | |
|------------------|----|----------|-----------|--|--|
| iodine-131 | Ci | 2.65E-03 | 1.31E-05 | | |
| iodine-133 | Ci | 2.86E-05 | 2.86E-04 | | |
| iodine-135 | Ci | 5.92E-04 | <7.69E-03 | | |
| Total for period | Ci | 3.27E-03 | 3.00E-04 | | |

3. Particulates

| | | | | | |
|----------------------|----|-----------|-----------|--|--|
| strontium-89 | Ci | 1.15E-05 | 3.06E-05 | | |
| strontium-90 | Ci | <4.82E-07 | <4.32E-07 | | |
| cesium-134 | Ci | <8.22E-05 | <8.22E-05 | | |
| cesium-137 | Ci | 4.18E-05 | 2.95E-05 | | |
| barium-lanthanum-140 | Ci | <3.00E-04 | <3.00E-04 | | |
| cobalt-58 | Ci | <1.10E-04 | 1.63E-05 | | |
| cobalt-60 | Ci | 4.37E-04 | 4.14E-04 | | |
| manganese-54 | Ci | 6.02E-05 | 4.82E-05 | | |
| zinc-65 | Ci | <3.02E-04 | 1.17E-04 | | |

*1 There were no batch mode gaseous releases for this reporting period.

*2 Not detected in the offgas mix. Limit of detectability = 6.79E-07 uCi/cc.

TABLE 1C
VERMONT YANKEE
EFFLUENT AND WASTE DISPOSAL SEMIANNUAL REPORT
THIRD AND FOURTH QUARTERS, 1984
GASEOUS EFFLUENTS - GROUND LEVEL RELEASES

There were no routine measured ground level continuous or batch mode gaseous releases during the third or fourth quarters of 1984.

TABLE 1D
VERMONT YANKEE
EFFLUENT AND WASTE DISPOSAL SEMIANNUAL REPORT
THIRD AND FOURTH QUARTERS, 1984
GASEOUS EFFLUENTS - NONROUTINE RELEASES

There were no nonroutine or accidental gaseous releases during the third or fourth quarters of 1984.

TABLE 2A
VERMONT YANKEE
EFFLUENT AND WASTE DISPOSAL SEMIANNUAL REPORT
THIRD AND FOURTH QUARTERS, 1984
LIQUID EFFLUENTS - SUMMATION OF ALL RELEASES

There were no liquid releases during the third or fourth quarters of 1984.

TABLE 2B
VERMONT YANKEE
EFFLUENT AND WASTE DISPOSAL SEMIANNUAL REPORT
THIRD AND FOURTH QUARTERS, 1984
LIQUID EFFLUENTS

There were no liquid releases during the third or fourth quarters of 1984.

TABLE 3
VERMONT YANKEE
EFFLUENT AND WASTE DISPOSAL SEMIANNUAL REPORT
THIRD AND FOURTH QUARTERS, 1984
SOLID WASTE AND IRRADIATED FUEL SHIPMENTS

A. SOLID WASTE SHIPPED OFFSITE FOR BURIAL OR DISPOSAL (Not irradiated fuel)

| | Unit | Quarter 3 | Est. total error, % |
|---|-----------|----------------------|------------------------|
| 1. Type of waste | | | |
| a. Spent resins, filter sludges, evaporator bottoms, etc. | m3 Ci | 6.96E+01 1.37E+02 | 7.50E+01 |
| b. Dry compressible waste, contaminated equipment, etc. | m3 Ci | 1.36E+02 6.11E+00 | 7.50E+01 |
| c. Irradiated components, control rods, etc. | -m3 Ci | 0.00E+00 0.00E+00 | |

2. Estimate of major nuclide composition (by type of waste)

| | | |
|---------------|---|----------|
| a. cesium-137 | % | 2.15E+01 |
| cobalt-60 | % | 3.52E+01 |
| manganese-54 | % | 9.97E+00 |
| zinc-65 | % | 1.96E+01 |
| cesium-134 | % | 5.22E+00 |
| cobalt-58 | % | 2.59E+00 |
| zirconium-95 | % | 6.30E-01 |
| iodine-131 | % | 1.03E+00 |
| niobium-95 | % | 1.66E+00 |
| nickel-63 | % | 8.10E-01 |
| iron-59 | % | 7.00E-01 |
| b. cesium-134 | % | 4.50E+00 |
| cesium-137 | % | 3.25E+01 |
| cobalt-60 | % | 4.77E+01 |
| manganese-54 | % | 4.50E+00 |
| zinc-65 | % | 7.17E+00 |
| zirconium-95 | % | 5.40E-01 |

3. Solid waste disposition

| Number of Shipments | Mode of Transportation | Destination |
|---------------------|------------------------|----------------------|
| 15 | Truck | Barnwell, S.C. |
| 5 | Truck | Richland, Washington |

B. IRRADIATED FUEL SHIPMENTS (Disposition)

| Number of Shipments | Mode of Transportation | Destination |
|---------------------|------------------------|----------------|
| 0 | not applicable | not applicable |

TABLE 4A

VERMONT YANKEE JUL-SEP 1984 JOINT FREQUENCY DISTRIBUTION (UPPER LEVEL)

297.0 FT WIND DATA

STABILITY CLASS A

CLASS FREQUENCY (PERCENT) = 2.26

WIND DIRECTION FROM

| SPEED(MPH) | N | NNE | NE | ENE | E | ESE | SE | SSE | S | SSW | SW | WSW | W | WNW | NW | NNW | VRBL | TOTAL |
|------------|-------|------|------|------|------|------|-------|-------|-------|------|------|------|------|------|------|-------|------|--------|
| CALM | 0 | 0 | 0 | 0 | 0 | 0 | 0 | 0 | 0 | 0 | 0 | 0 | 0 | 0 | 0 | 0 | 0 | 0 |
| (1) | 0.00 | 0.00 | 0.00 | 0.00 | 0.00 | 0.00 | 0.00 | 0.00 | 0.00 | 0.00 | 0.00 | 0.00 | 0.00 | 0.00 | 0.00 | 0.00 | 0.00 | 0.00 |
| (2) | 0.00 | 0.00 | 0.00 | 0.00 | 0.00 | 0.00 | 0.00 | 0.00 | 0.00 | 0.00 | 0.00 | 0.00 | 0.00 | 0.00 | 0.00 | 0.00 | 0.00 | 0.00 |
| C-3 | 2 | 0 | 0 | 0 | 1 | 1 | 0 | 1 | 0 | 0 | 0 | 0 | 0 | 0 | 1 | 0 | 0 | 6 |
| (1) | 4.08 | 0.00 | 0.00 | 0.00 | 2.04 | 2.04 | 0.00 | 2.04 | 0.00 | 0.00 | 0.00 | 0.00 | 0.00 | 0.00 | 2.04 | 0.00 | 0.00 | 12.24 |
| (2) | .09 | 0.00 | 0.00 | 0.00 | .05 | .05 | 0.00 | .05 | 0.00 | 0.00 | 0.00 | 0.00 | 0.00 | 0.00 | .05 | 0.00 | 0.00 | .28 |
| 4-7 | 3 | 1 | 0 | 0 | 0 | 1 | 3 | 1 | 1 | 0 | 0 | 0 | 0 | 0 | 0 | 0 | 0 | 10 |
| (1) | 6.12 | 2.04 | 0.00 | 0.00 | 0.00 | 2.04 | 6.12 | 2.04 | 2.04 | 0.00 | 0.00 | 0.00 | 0.00 | 0.00 | 0.00 | 0.00 | 0.00 | 20.41 |
| (2) | .14 | .05 | 0.00 | 0.00 | 0.00 | .05 | .14 | .05 | .05 | 0.00 | 0.00 | 0.00 | 0.00 | 0.00 | 0.00 | 0.00 | 0.00 | .46 |
| 8-12 | 0 | 0 | 0 | 0 | 0 | 0 | 2 | 11 | 5 | 0 | 0 | 0 | 0 | 0 | 0 | 6 | 0 | 24 |
| (1) | 0.00 | 0.00 | 0.00 | 0.00 | 0.00 | 0.00 | 4.08 | 22.45 | 10.20 | 0.00 | 0.00 | 0.00 | 0.00 | 0.00 | 0.00 | 12.24 | 0.00 | 48.98 |
| (2) | 0.00 | 0.00 | 0.00 | 0.00 | 0.00 | 0.00 | .09 | .51 | .23 | 0.00 | 0.00 | 0.00 | 0.00 | 0.00 | 0.00 | .28 | 0.00 | 1.11 |
| 13-18 | 0 | 0 | 0 | 0 | 0 | 0 | 0 | 0 | 4 | 0 | 0 | 0 | 0 | 0 | 0 | 5 | 0 | 9 |
| (1) | 0.00 | 0.00 | 0.00 | 0.00 | 0.00 | 0.00 | 0.00 | 0.00 | 8.16 | 0.00 | 0.00 | 0.00 | 0.00 | 0.00 | 0.00 | 10.20 | 0.00 | 18.37 |
| (2) | 0.00 | 0.00 | 0.00 | 0.00 | 0.00 | 0.00 | 0.00 | 0.00 | .18 | 0.00 | 0.00 | 0.00 | 0.00 | 0.00 | 0.00 | .23 | 0.00 | .41 |
| 19-24 | 0 | 0 | 0 | 0 | 0 | 0 | 0 | 0 | 0 | 0 | 0 | 0 | 0 | 0 | 0 | 0 | 0 | 0 |
| (1) | 0.00 | 0.00 | 0.00 | 0.00 | 0.00 | 0.00 | 0.00 | 0.00 | 0.00 | 0.00 | 0.00 | 0.00 | 0.00 | 0.00 | 0.00 | 0.00 | 0.00 | 0.00 |
| (2) | 0.00 | 0.00 | 0.00 | 0.00 | 0.00 | 0.00 | 0.00 | 0.00 | 0.00 | 0.00 | 0.00 | 0.00 | 0.00 | 0.00 | 0.00 | 0.00 | 0.00 | 0.00 |
| GT 24 | 0 | 0 | 0 | 0 | 0 | 0 | 0 | 0 | 0 | 0 | 0 | 0 | 0 | 0 | 0 | 0 | 0 | 0 |
| (1) | 0.00 | 0.00 | 0.00 | 0.00 | 0.00 | 0.00 | 0.00 | 0.00 | 0.00 | 0.00 | 0.00 | 0.00 | 0.00 | 0.00 | 0.00 | 0.00 | 0.00 | 0.00 |
| (2) | 0.00 | 0.00 | 0.00 | 0.00 | 0.00 | 0.00 | 0.00 | 0.00 | 0.00 | 0.00 | 0.00 | 0.00 | 0.00 | 0.00 | 0.00 | 0.00 | 0.00 | 0.00 |
| ALL SPEEDS | 5 | 1 | 0 | 0 | 1 | 2 | 5 | 13 | 10 | 0 | 0 | 0 | 0 | 0 | 1 | 11 | 0 | 49 |
| (1) | 10.20 | 2.04 | 0.00 | 0.00 | 2.04 | 4.08 | 10.20 | 26.53 | 20.41 | 0.00 | 0.00 | 0.00 | 0.00 | 0.00 | 2.04 | 22.45 | 0.00 | 100.00 |
| (2) | .23 | .05 | 0.00 | 0.00 | .05 | .09 | .23 | .60 | .46 | 0.00 | 0.00 | 0.00 | 0.00 | 0.00 | .05 | .51 | 0.00 | 2.26 |

(1)=PERCENT OF ALL GOOD OBSERVATIONS FOR THIS PAGE

(2)=PERCENT OF ALL GOOD OBSERVATIONS FOR THIS PERIOD

C= CALM (WIND SPEED LESS THAN OR EQUAL TO .60 MPH)

TABLE 4B

VERMONT YANKEE JUL-SEP 1984 JOINT FREQUENCY DISTRIBUTION (UPPER LEVEL)

297.0 FT WIND DATA

STABILITY CLASS B

CLASS FREQUENCY (PERCENT) = 4.10

WIND DIRECTION FROM

| SPEED(MPH) | N | NNE | NE | ENE | E | ESE | SE | SSE | S | SSW | SW | WSW | W | WNW | NW | NNW | VRBL | TOTAL |
|------------|-------|------|------|------|------|------|-------|------|-------|------|------|------|------|------|------|-------|------|--------|
| CALM | 0 | 0 | 0 | 0 | 0 | 0 | 0 | 0 | 0 | 0 | 0 | 0 | 0 | 0 | 0 | 0 | 0 | 0 |
| (1) | 0.00 | 0.00 | 0.00 | 0.00 | 0.00 | 0.00 | 0.00 | 0.00 | 0.00 | 0.00 | 0.00 | 0.00 | 0.00 | 0.00 | 0.00 | 0.00 | 0.00 | 0.00 |
| (2) | 0.00 | 0.00 | 0.00 | 0.00 | 0.00 | 0.00 | 0.00 | 0.00 | 0.00 | 0.00 | 0.00 | 0.00 | 0.00 | 0.00 | 0.00 | 0.00 | 0.00 | 0.00 |
| C-3 | 2 | 0 | 2 | 1 | 0 | 2 | 1 | 0 | 0 | 0 | 1 | 1 | 0 | 0 | 0 | 3 | 0 | 13 |
| (1) | 2.25 | 0.00 | 2.25 | 1.12 | 0.00 | 2.25 | 1.12 | 0.00 | 0.00 | 0.00 | 1.12 | 1.12 | 0.00 | 0.00 | 0.00 | 3.37 | 0.00 | 14.61 |
| (2) | .09 | 0.00 | .09 | .05 | 0.00 | .09 | .05 | 0.00 | 0.00 | 0.00 | .05 | .05 | 0.00 | 0.00 | 0.00 | .14 | 0.00 | .60 |
| 4-7 | 1 | 1 | 1 | 1 | 0 | 2 | 4 | 1 | 1 | 0 | 0 | 0 | 0 | 1 | 0 | 4 | 0 | 17 |
| (1) | 1.12 | 1.12 | 1.12 | 1.12 | 0.00 | 2.25 | 4.49 | 1.12 | 1.12 | 0.00 | 0.00 | 0.00 | 0.00 | 1.12 | 0.00 | 4.49 | 0.00 | 19.10 |
| (2) | .05 | .05 | .05 | .05 | 0.00 | .09 | .18 | .05 | .05 | 0.00 | 0.00 | 0.00 | 0.00 | .05 | 0.00 | .18 | 0.00 | .78 |
| 8-12 | 5 | 0 | 0 | 0 | 0 | 0 | 7 | 3 | 11 | 2 | 0 | 0 | 0 | 0 | 1 | 8 | 0 | 37 |
| (1) | 5.62 | 0.00 | 0.00 | 0.00 | 0.00 | 0.00 | 7.87 | 3.37 | 12.36 | 2.25 | 0.00 | 0.00 | 0.00 | 0.00 | 1.12 | 8.99 | 0.00 | 41.57 |
| (2) | .23 | 0.00 | 0.00 | 0.00 | 0.00 | 0.00 | .32 | .14 | .51 | .09 | 0.00 | 0.00 | 0.00 | 0.00 | .05 | .37 | 0.00 | 1.70 |
| 13-18 | 1 | 0 | 0 | 0 | 0 | 0 | 0 | 0 | 10 | 0 | 0 | 0 | 0 | 0 | 1 | 8 | 0 | 20 |
| (1) | 1.12 | 0.00 | 0.00 | 0.00 | 0.00 | 0.00 | 0.00 | 0.00 | 11.24 | 0.00 | 0.00 | 0.00 | 0.00 | 0.00 | 1.12 | 8.99 | 0.00 | 22.47 |
| (2) | .05 | 0.00 | 0.00 | 0.00 | 0.00 | 0.00 | 0.00 | 0.00 | .46 | 0.00 | 0.00 | 0.00 | 0.00 | 0.00 | .05 | .37 | 0.00 | .92 |
| 19-24 | 0 | 0 | 0 | 0 | 0 | 0 | 0 | 0 | 0 | 0 | 0 | 0 | 0 | 0 | 2 | 0 | 0 | 2 |
| (1) | 0.00 | 0.00 | 0.00 | 0.00 | 0.00 | 0.00 | 0.00 | 0.00 | 0.00 | 0.00 | 0.00 | 0.00 | 0.00 | 0.00 | 2.25 | 0.00 | 0.00 | 2.25 |
| (2) | 0.00 | 0.00 | 0.00 | 0.00 | 0.00 | 0.00 | 0.00 | 0.00 | 0.00 | 0.00 | 0.00 | 0.00 | 0.00 | 0.00 | .09 | 0.00 | 0.00 | .09 |
| GT 24 | 0 | 0 | 0 | 0 | 0 | 0 | 0 | 0 | 0 | 0 | 0 | 0 | 0 | 0 | 0 | 0 | 0 | 0 |
| (1) | 0.00 | 0.00 | 0.00 | 0.00 | 0.00 | 0.00 | 0.00 | 0.00 | 0.00 | 0.00 | 0.00 | 0.00 | 0.00 | 0.00 | 0.00 | 0.00 | 0.00 | 0.00 |
| (2) | 0.00 | 0.00 | 0.00 | 0.00 | 0.00 | 0.00 | 0.00 | 0.00 | 0.00 | 0.00 | 0.00 | 0.00 | 0.00 | 0.00 | 0.00 | 0.00 | 0.00 | 0.00 |
| ALL SPEEDS | 9 | 1 | 3 | 2 | 0 | 4 | 12 | 4 | 22 | 2 | 1 | 1 | 0 | 1 | 4 | 23 | 0 | 89 |
| (1) | 10.11 | 1.12 | 3.37 | 2.25 | 0.00 | 4.49 | 13.48 | 4.49 | 24.72 | 2.25 | 1.12 | 1.12 | 0.00 | 1.12 | 4.49 | 25.84 | 0.00 | 100.00 |
| (2) | .41 | .05 | .14 | .09 | 0.00 | .18 | .55 | .18 | 1.01 | .09 | .05 | .05 | 0.00 | .05 | .18 | 1.06 | 0.00 | 4.10 |

(1)=PERCENT OF ALL GOOD OBSERVATIONS FOR THIS PAGE

(2)=PERCENT OF ALL GOOD OBSERVATIONS FOR THIS PERIOD

C= CALM (WIND SPEED LESS THAN OR EQUAL TO .60 MPH)

TABLE 4C

VERMONT YANKEE JUL-SEP 1984 JOINT FREQUENCY DISTRIBUTION (UPPER LEVEL)

297.0 FT WIND DATA

STABILITY CLASS C

CLASS FREQUENCY (PERCENT) = 6.59

WIND DIRECTION FROM

| SPEED(MPH) | N | NNE | NE | ENE | E | ESE | SE | SSE | S | SSW | SW | WSW | W | WNW | NW | NNW | VRBL | TOTAL |
|------------|-------|------|------|------|------|------|------|------|-------|------|------|------|------|------|------|-------|------|--------|
| CALM | 0 | 0 | 0 | 0 | 0 | 0 | 0 | 0 | 0 | 0 | 0 | 0 | 0 | 0 | 0 | 0 | 0 | 0 |
| (1) | 0.00 | 0.00 | 0.00 | 0.00 | 0.00 | 0.00 | 0.00 | 0.00 | 0.00 | 0.00 | 0.00 | 0.00 | 0.00 | 0.00 | 0.00 | 0.00 | 0.00 | 0.00 |
| (2) | 0.00 | 0.00 | 0.00 | 0.00 | 0.00 | 0.00 | 0.00 | 0.00 | 0.00 | 0.00 | 0.00 | 0.00 | 0.00 | 0.00 | 0.00 | 0.00 | 0.00 | 0.00 |
| C-3 | 1 | 3 | 1 | 4 | 2 | 1 | 3 | 2 | 0 | 0 | 0 | 0 | 1 | 1 | 1 | 1 | 0 | 21 |
| (1) | .70 | 2.10 | .70 | 2.80 | 1.40 | .70 | 2.10 | 1.40 | 0.00 | 0.00 | 0.00 | 0.00 | .70 | .70 | .70 | .70 | 0.00 | 14.69 |
| (2) | .05 | .14 | .05 | .18 | .09 | .05 | .14 | .09 | 0.00 | 0.00 | 0.00 | 0.00 | .05 | .05 | .05 | .05 | 0.00 | .97 |
| 4-7 | 7 | 3 | 0 | 2 | 3 | 3 | 8 | 4 | 2 | 1 | 0 | 0 | 1 | 0 | 0 | 11 | 0 | 45 |
| (1) | 4.90 | 2.10 | 0.00 | 1.40 | 2.10 | 2.10 | 5.59 | 2.80 | 1.40 | .70 | 0.00 | 0.00 | .70 | 0.00 | 0.00 | 7.69 | 0.00 | 31.47 |
| (2) | .32 | .14 | 0.00 | .09 | .14 | .14 | .37 | .18 | .09 | .05 | 0.00 | 0.00 | .05 | 0.00 | 0.00 | .51 | 0.00 | 2.07 |
| 8-12 | 5 | 1 | 0 | 0 | 0 | 3 | 3 | 1 | 8 | 2 | 1 | 2 | 3 | 2 | 4 | 5 | 0 | 40 |
| (1) | 3.50 | .70 | 0.00 | 0.00 | 0.00 | 2.10 | 2.10 | .70 | 5.59 | 1.40 | .70 | 1.40 | 2.10 | 1.40 | 2.80 | 3.50 | 0.00 | 27.97 |
| (2) | .23 | .05 | 0.00 | 0.00 | 0.00 | .14 | .14 | .05 | .37 | .09 | .05 | .09 | .14 | .09 | .18 | .23 | 0.00 | 1.84 |
| 13-18 | 5 | 1 | 0 | 0 | 0 | 0 | 0 | 0 | 8 | 1 | 0 | 1 | 1 | 1 | 0 | 13 | 0 | 31 |
| (1) | 3.50 | .70 | 0.00 | 0.00 | 0.00 | 0.00 | 0.00 | 0.00 | 5.59 | .70 | 0.00 | .70 | .70 | .70 | 0.00 | 9.09 | 0.00 | 21.68 |
| (2) | .23 | .05 | 0.00 | 0.00 | 0.00 | 0.00 | 0.00 | 0.00 | .37 | .05 | 0.00 | .05 | .05 | .05 | 0.00 | .60 | 0.00 | 1.43 |
| 19-24 | 2 | 0 | 0 | 0 | 0 | 0 | 0 | 0 | 0 | 0 | 0 | 0 | 0 | 0 | 1 | 3 | 0 | 6 |
| (1) | 1.40 | 0.00 | 0.00 | 0.00 | 0.00 | 0.00 | 0.00 | 0.00 | 0.00 | 0.00 | 0.00 | 0.00 | 0.00 | 0.00 | .70 | 2.10 | 0.00 | 4.20 |
| (2) | .09 | 0.00 | 0.00 | 0.00 | 0.00 | 0.00 | 0.00 | 0.00 | 0.00 | 0.00 | 0.00 | 0.00 | 0.00 | 0.00 | .05 | .14 | 0.00 | .28 |
| GT 24 | 0 | 0 | 0 | 0 | 0 | 0 | 0 | 0 | 0 | 0 | 0 | 0 | 0 | 0 | 0 | 0 | 0 | 0 |
| (1) | 0.00 | 0.00 | 0.00 | 0.00 | 0.00 | 0.00 | 0.00 | 0.00 | 0.00 | 0.00 | 0.00 | 0.00 | 0.00 | 0.00 | 0.00 | 0.00 | 0.00 | 0.00 |
| (2) | 0.00 | 0.00 | 0.00 | 0.00 | 0.00 | 0.00 | 0.00 | 0.00 | 0.00 | 0.00 | 0.00 | 0.00 | 0.00 | 0.00 | 0.00 | 0.00 | 0.00 | 0.00 |
| ALL SPEEDS | 20 | 8 | 1 | 6 | 5 | 7 | 14 | 7 | 18 | 4 | 1 | 3 | 6 | 4 | 6 | 33 | 0 | 143 |
| (1) | 13.99 | 5.59 | .70 | 4.20 | 3.50 | 4.90 | 9.79 | 4.90 | 12.59 | 2.80 | .70 | 2.10 | 4.20 | 2.80 | 4.20 | 23.08 | 0.00 | 100.00 |
| (2) | .92 | .37 | .05 | .28 | .23 | .32 | .64 | .32 | .83 | .18 | .05 | .14 | .28 | .18 | .28 | 1.52 | 0.00 | 6.59 |

(1)=PERCENT OF ALL GOOD OBSERVATIONS FOR THIS PAGE

(2)=PERCENT OF ALL GOOD OBSERVATIONS FOR THIS PERIOD

C= CALM (WIND SPEED LESS THAN OR EQUAL TO .60 MPH)

TABLE 4D

VERMONT YANKEE JUL-SEP 1984 JOINT FREQUENCY DISTRIBUTION (UPPER LEVEL)

297.0 FT WIND DATA

STABILITY CLASS D

CLASS FREQUENCY (PERCENT) = 38.05

WIND DIRECTION FROM

| SPEED(MPH) | N | NNE | NE | ENE | E | ESE | SE | SSE | S | SSW | SW | WSW | W | WNW | NW | NNW | VRBL | TOTAL |
|------------|-------|------|------|------|------|------|------|------|-------|------|------|------|------|------|------|-------|------|--------|
| CALM | 0 | 0 | 0 | 0 | 0 | 0 | 0 | 0 | 0 | 0 | 0 | 0 | 0 | 0 | 0 | 0 | 0 | 0 |
| (1) | 0.00 | 0.00 | 0.00 | 0.00 | 0.00 | 0.00 | 0.00 | 0.00 | 0.00 | 0.00 | 0.00 | 0.00 | 0.00 | 0.00 | 0.00 | 0.00 | 0.00 | 0.00 |
| (2) | 0.00 | 0.00 | 0.00 | 0.00 | 0.00 | 0.00 | 0.00 | 0.00 | 0.00 | 0.00 | 0.00 | 0.00 | 0.00 | 0.00 | 0.00 | 0.00 | 0.00 | 0.00 |
| C-3 | 20 | 7 | 10 | 6 | 12 | 15 | 13 | 13 | 6 | 6 | 7 | 2 | 3 | 4 | 8 | 21 | 0 | 153 |
| (1) | 2.42 | .85 | 1.21 | .73 | 1.45 | 1.82 | 1.57 | 1.57 | .73 | .73 | .85 | .24 | .36 | .48 | .97 | 2.54 | 0.00 | 18.52 |
| (2) | .92 | .32 | .46 | .28 | .55 | .69 | .60 | .60 | .28 | .28 | .32 | .09 | .14 | .18 | .37 | .97 | 0.00 | 7.05 |
| 4-7 | 41 | 11 | 7 | 8 | 13 | 19 | 36 | 29 | 20 | 12 | 3 | 4 | 4 | 7 | 7 | 36 | 0 | 257 |
| (1) | 4.96 | 1.33 | .85 | .97 | 1.57 | 2.30 | 4.36 | 3.51 | 2.42 | 1.45 | .36 | .48 | .48 | .85 | .85 | 4.36 | 0.00 | 31.11 |
| (2) | 1.89 | .51 | .32 | .37 | .60 | .88 | 1.66 | 1.34 | .92 | .55 | .14 | .18 | .18 | .32 | .32 | 1.66 | 0.00 | 11.84 |
| 8-12 | 30 | 9 | 2 | 1 | 5 | 9 | 23 | 31 | 70 | 17 | 11 | 7 | 15 | 11 | 6 | 26 | 0 | 273 |
| (1) | 3.63 | 1.09 | .24 | .12 | .61 | 1.09 | 2.78 | 3.75 | 8.47 | 2.06 | 1.33 | .85 | 1.82 | 1.33 | .73 | 3.15 | 0.00 | 33.05 |
| (2) | 1.38 | .41 | .09 | .05 | .23 | .41 | 1.06 | 1.43 | 3.22 | .78 | .51 | .32 | .69 | .51 | .28 | 1.20 | 0.00 | 12.57 |
| 13-18 | 17 | 2 | 0 | 0 | 0 | 1 | 1 | 5 | 31 | 8 | 5 | 2 | 10 | 14 | 6 | 28 | 0 | 130 |
| (1) | 2.06 | .24 | 0.00 | 0.00 | 0.00 | .12 | .12 | .61 | 3.75 | .97 | .61 | .24 | 1.21 | 1.69 | .73 | 3.39 | 0.00 | 15.74 |
| (2) | .78 | .09 | 0.00 | 0.00 | 0.00 | .05 | .05 | .23 | 1.43 | .37 | .23 | .09 | .46 | .64 | .28 | 1.29 | 0.00 | 5.99 |
| 19-24 | 0 | 0 | 0 | 0 | 0 | 0 | 0 | 0 | 0 | 0 | 1 | 0 | 0 | 1 | 3 | 8 | 0 | 13 |
| (1) | 0.00 | 0.00 | 0.00 | 0.00 | 0.00 | 0.00 | 0.00 | 0.00 | 0.00 | 0.00 | .12 | 0.00 | 0.00 | .12 | .36 | .97 | 0.00 | 1.57 |
| (2) | 0.00 | 0.00 | 0.00 | 0.00 | 0.00 | 0.00 | 0.00 | 0.00 | 0.00 | 0.00 | .05 | 0.00 | 0.00 | .05 | .14 | .37 | 0.00 | .60 |
| GT 24 | 0 | 0 | 0 | 0 | 0 | 0 | 0 | 0 | 0 | 0 | 0 | 0 | 0 | 0 | 0 | 0 | 0 | 0 |
| (1) | 0.00 | 0.00 | 0.00 | 0.00 | 0.00 | 0.00 | 0.00 | 0.00 | 0.00 | 0.00 | 0.00 | 0.00 | 0.00 | 0.00 | 0.00 | 0.00 | 0.00 | 0.00 |
| (2) | 0.00 | 0.00 | 0.00 | 0.00 | 0.00 | 0.00 | 0.00 | 0.00 | 0.00 | 0.00 | 0.00 | 0.00 | 0.00 | 0.00 | 0.00 | 0.00 | 0.00 | 0.00 |
| ALL SPEEDS | 108 | 29 | 19 | 15 | 30 | 44 | 73 | 78 | 127 | 43 | 27 | 15 | 32 | 37 | 30 | 119 | 0 | 826 |
| (1) | 13.08 | 3.51 | 2.30 | 1.82 | 3.63 | 5.33 | 8.84 | 9.44 | 15.38 | 5.21 | 3.27 | 1.82 | 3.87 | 4.48 | 3.63 | 14.41 | 0.00 | 100.00 |
| (2) | 4.97 | 1.34 | .88 | .69 | 1.38 | 2.03 | 3.36 | 3.59 | 5.85 | 1.98 | 1.24 | .69 | 1.47 | 1.70 | 1.38 | 5.48 | 0.00 | 38.05 |

(1)=PERCENT OF ALL GOOD OBSERVATIONS FOR THIS PAGE

(2)=PERCENT OF ALL GOOD OBSERVATIONS FOR THIS PERIOD

C= CALM (WIND SPEED LESS THAN OR EQUAL TO .60 MPH)

TABLE 4E

VERMONT YANKEE JUL-SEP 1984 JOINT FREQUENCY DISTRIBUTION (UPPER LEVEL)

297.0 FT WIND DATA

STABILITY CLASS E

CLASS FREQUENCY (PERCENT) = 33.86

WIND DIRECTION FROM

| SPEED(MPH) | N | NNE | NE | ENE | E | ESE | SE | SSE | S | SSW | SW | WSW | W | WNW | NW | NNW | VRBL | TOTAL |
|------------|-------|------|------|------|------|------|-------|------|-------|------|------|------|------|------|------|-------|------|--------|
| CALM | 0 | 0 | 0 | 0 | 0 | 0 | 0 | 0 | 0 | 0 | 0 | 0 | 0 | 0 | 0 | 0 | 0 | 0 |
| (1) | 0.00 | 0.00 | 0.00 | 0.00 | 0.00 | 0.00 | 0.00 | 0.00 | 0.00 | 0.00 | 0.00 | 0.00 | 0.00 | 0.00 | 0.00 | 0.00 | 0.00 | 0.00 |
| (2) | 0.00 | 0.00 | 0.00 | 0.00 | 0.00 | 0.00 | 0.00 | 0.00 | 0.00 | 0.00 | 0.00 | 0.00 | 0.00 | 0.00 | 0.00 | 0.00 | 0.00 | 0.00 |
| C-3 | 57 | 25 | 21 | 21 | 17 | 22 | 25 | 12 | 11 | 3 | 3 | 1 | 1 | 5 | 5 | 24 | 0 | 253 |
| (1) | 7.76 | 3.40 | 2.86 | 2.86 | 2.31 | 2.99 | 3.40 | 1.63 | 1.50 | .41 | .41 | .14 | .14 | .68 | .68 | 3.27 | 0.00 | 34.42 |
| (2) | 2.63 | 1.15 | .97 | .97 | .78 | 1.01 | 1.15 | .55 | .51 | .14 | .14 | .05 | .05 | .23 | .23 | 1.11 | 0.00 | 11.65 |
| 4-7 | 58 | 7 | 3 | 3 | 10 | 7 | 50 | 35 | 17 | 8 | 5 | 4 | 5 | 1 | 7 | 59 | 0 | 279 |
| (1) | 7.89 | .95 | .41 | .41 | 1.36 | .95 | 6.80 | 4.76 | 2.31 | 1.09 | .68 | .54 | .68 | .14 | .95 | 8.03 | 0.00 | 37.96 |
| (2) | 2.67 | .32 | .14 | .14 | .46 | .32 | 2.30 | 1.61 | .78 | .37 | .23 | .18 | .23 | .05 | .32 | 2.72 | 0.00 | 12.85 |
| 8-12 | 9 | 1 | 0 | 0 | 0 | 3 | 6 | 21 | 25 | 12 | 3 | 4 | 5 | 8 | 5 | 32 | 0 | 134 |
| (1) | 1.22 | .14 | 0.00 | 0.00 | 0.00 | .41 | .82 | 2.86 | 3.40 | 1.63 | .41 | .54 | .68 | 1.09 | .68 | 4.35 | 0.00 | 18.23 |
| (2) | .41 | .05 | 0.00 | 0.00 | 0.00 | .14 | .28 | .97 | 1.15 | .55 | .14 | .18 | .23 | .37 | .23 | 1.47 | 0.00 | 6.17 |
| 13-18 | 2 | 0 | 0 | 0 | 0 | 0 | 0 | 2 | 21 | 9 | 2 | 1 | 3 | 9 | 4 | 8 | 0 | 61 |
| (1) | .27 | 0.00 | 0.00 | 0.00 | 0.00 | 0.00 | 0.00 | .27 | 2.86 | 1.22 | .27 | .14 | .41 | 1.22 | .54 | 1.09 | 0.00 | 9.30 |
| (2) | .09 | 0.00 | 0.00 | 0.00 | 0.00 | 0.00 | 0.00 | .09 | .97 | .41 | .09 | .05 | .14 | .41 | .18 | .37 | 0.00 | 2.81 |
| 19-24 | 0 | 0 | 0 | 0 | 0 | 0 | 0 | 0 | 5 | 1 | 0 | 0 | 0 | 1 | 0 | 1 | 0 | 8 |
| (1) | 0.00 | 0.00 | 0.00 | 0.00 | 0.00 | 0.00 | 0.00 | 0.00 | .68 | .14 | 0.00 | 0.00 | 0.00 | .14 | 0.00 | .14 | 0.00 | 1.09 |
| (2) | 0.00 | 0.00 | 0.00 | 0.00 | 0.00 | 0.00 | 0.00 | 0.00 | .23 | .05 | 0.00 | 0.00 | 0.00 | .05 | 0.00 | .05 | 0.00 | .37 |
| GT 24 | 0 | 0 | 0 | 0 | 0 | 0 | 0 | 0 | 0 | 0 | 0 | 0 | 0 | 0 | 0 | 0 | 0 | 0 |
| (1) | 0.00 | 0.00 | 0.00 | 0.00 | 0.00 | 0.00 | 0.00 | 0.00 | 0.00 | 0.00 | 0.00 | 0.00 | 0.00 | 0.00 | 0.00 | 0.00 | 0.00 | 0.00 |
| (2) | 0.00 | 0.00 | 0.00 | 0.00 | 0.00 | 0.00 | 0.00 | 0.00 | 0.00 | 0.00 | 0.00 | 0.00 | 0.00 | 0.00 | 0.00 | 0.00 | 0.00 | 0.00 |
| ALL SPEEDS | 126 | 33 | 24 | 24 | 27 | 32 | 81 | 70 | 79 | 33 | 13 | 10 | 14 | 24 | 21 | 124 | 0 | 735 |
| (1) | 17.14 | 4.49 | 3.27 | 3.27 | 3.67 | 4.35 | 11.02 | 9.52 | 10.75 | 4.49 | 1.77 | 1.36 | 1.90 | 3.27 | 2.86 | 16.87 | 0.00 | 100.00 |
| (2) | 5.80 | 1.52 | 1.11 | 1.11 | 1.24 | 1.47 | 3.73 | 3.22 | 3.64 | 1.52 | .60 | .46 | .64 | 1.11 | .97 | 5.71 | 0.00 | 33.86 |

(1)=PERCENT OF ALL GOOD OBSERVATIONS FOR THIS PAGE

(2)=PERCENT OF ALL GOOD OBSERVATIONS FOR THIS PERIOD

C= CALM (WIND SPEED LESS THAN OR EQUAL TO .60 MPH)

TABLE 4F

VERMONT YANKEE JUL-SEP 1984 JOINT FREQUENCY DISTRIBUTION (UPPER LEVEL)

297.0 FT WIND DATA

STABILITY CLASS F

CLASS FREQUENCY (PERCENT) = 14.69

WIND DIRECTION FROM

| SPEED(MPH) | N | NNE | NE | ENE | E | ESE | SE | SSE | S | SSW | SW | WSW | W | WNW | NW | NNW | VREL | TOTAL |
|------------|-------|------|------|------|------|------|-------|-------|------|------|------|------|------|------|------|-------|------|--------|
| CALM | 0 | 0 | 0 | 0 | 0 | 0 | 0 | 0 | 0 | 0 | 0 | 0 | 0 | 0 | 0 | 0 | 0 | 0 |
| (1) | 0.00 | 0.00 | 0.00 | 0.00 | 0.00 | 0.00 | 0.00 | 0.00 | 0.00 | 0.00 | 0.00 | 0.00 | 0.00 | 0.00 | 0.00 | 0.00 | 0.00 | 0.00 |
| (2) | 0.00 | 0.00 | 0.00 | 0.00 | 0.00 | 0.00 | 0.00 | 0.00 | 0.00 | 0.00 | 0.00 | 0.00 | 0.00 | 0.00 | 0.00 | 0.00 | 0.00 | 0.00 |
| C-3 | 19 | 12 | 10 | 8 | 7 | 12 | 12 | 16 | 6 | 1 | 1 | 3 | 2 | 2 | 1 | 12 | 0 | 124 |
| (1) | 5.96 | 3.76 | 3.13 | 2.51 | 2.19 | 3.76 | 3.76 | 5.02 | 1.88 | .31 | .31 | .94 | .63 | .63 | .31 | 3.76 | 0.00 | 38.87 |
| (2) | .88 | .55 | .46 | .37 | .32 | .55 | .55 | .74 | .28 | .05 | .05 | .14 | .09 | .09 | .05 | .55 | 0.00 | 5.71 |
| 4-7 | 25 | 4 | 2 | 3 | 6 | 12 | 25 | 15 | 7 | 5 | 5 | 3 | 5 | 7 | 5 | 29 | 0 | 158 |
| (1) | 7.84 | 1.25 | .63 | .94 | 1.88 | 3.76 | 7.84 | 4.70 | 2.19 | 1.57 | 1.57 | .94 | 1.57 | 2.19 | 1.57 | 9.09 | 0.00 | 49.53 |
| (2) | 1.15 | .18 | .09 | .14 | .28 | .55 | 1.15 | .69 | .32 | .23 | .23 | .14 | .23 | .32 | .23 | 1.34 | 0.00 | 7.28 |
| 8-12 | 2 | 0 | 0 | 0 | 0 | 0 | 2 | 7 | 3 | 6 | 0 | 3 | 5 | 2 | 2 | 3 | 0 | 35 |
| (1) | .63 | 0.00 | 0.00 | 0.00 | 0.00 | 0.00 | .63 | 2.19 | .94 | 1.88 | 0.00 | .94 | 1.57 | .63 | .63 | .94 | 0.00 | 10.97 |
| (2) | .09 | 0.00 | 0.00 | 0.00 | 0.00 | 0.00 | .09 | .32 | .14 | .28 | 0.00 | .14 | .23 | .09 | .09 | .14 | 0.00 | 1.61 |
| 13-18 | 0 | 0 | 0 | 0 | 0 | 0 | 0 | 0 | 1 | 0 | 0 | 0 | 0 | 0 | 1 | 0 | 0 | 2 |
| (1) | 0.00 | 0.00 | 0.00 | 0.00 | 0.00 | 0.00 | 0.00 | 0.00 | .31 | 0.00 | 0.00 | 0.00 | 0.00 | 0.00 | .31 | 0.00 | 0.00 | .63 |
| (2) | 0.00 | 0.00 | 0.00 | 0.00 | 0.00 | 0.00 | 0.00 | 0.00 | .05 | 0.00 | 0.00 | 0.00 | 0.00 | 0.00 | .05 | 0.00 | 0.00 | .09 |
| 19-24 | 0 | 0 | 0 | 0 | 0 | 0 | 0 | 0 | 0 | 0 | 0 | 0 | 0 | 0 | 0 | 0 | 0 | 0 |
| (1) | 0.00 | 0.00 | 0.00 | 0.00 | 0.00 | 0.00 | 0.00 | 0.00 | 0.00 | 0.00 | 0.00 | 0.00 | 0.00 | 0.00 | 0.00 | 0.00 | 0.00 | 0.00 |
| (2) | 0.00 | 0.00 | 0.00 | 0.00 | 0.00 | 0.00 | 0.00 | 0.00 | 0.00 | 0.00 | 0.00 | 0.00 | 0.00 | 0.00 | 0.00 | 0.00 | 0.00 | 0.00 |
| GT 24 | 0 | 0 | 0 | 0 | 0 | 0 | 0 | 0 | 0 | 0 | 0 | 0 | 0 | 0 | 0 | 0 | 0 | 0 |
| (1) | 0.00 | 0.00 | 0.00 | 0.00 | 0.00 | 0.00 | 0.00 | 0.00 | 0.00 | 0.00 | 0.00 | 0.00 | 0.00 | 0.00 | 0.00 | 0.00 | 0.00 | 0.00 |
| (2) | 0.00 | 0.00 | 0.00 | 0.00 | 0.00 | 0.00 | 0.00 | 0.00 | 0.00 | 0.00 | 0.00 | 0.00 | 0.00 | 0.00 | 0.00 | 0.00 | 0.00 | 0.00 |
| ALL SPEEDS | 46 | 16 | 12 | 11 | 13 | 24 | 39 | 38 | 17 | 12 | 6 | 9 | 12 | 11 | 9 | 44 | 0 | 319 |
| (1) | 14.42 | 5.02 | 3.76 | 3.45 | 4.08 | 7.52 | 12.23 | 11.91 | 5.33 | 3.76 | 1.88 | 2.82 | 3.76 | 3.45 | 2.82 | 13.79 | 0.00 | 100.00 |
| (2) | 2.12 | .74 | .55 | .51 | .60 | 1.11 | 1.80 | 1.75 | .78 | .55 | .28 | .41 | .55 | .51 | .41 | 2.03 | 0.00 | 14.69 |

(1)=PERCENT OF ALL GOOD OBSERVATIONS FOR THIS PAGE

(2)=PERCENT OF ALL GOOD OBSERVATIONS FOR THIS PERIOD

C= CALM (WIND SPEED LESS THAN OR EQUAL TO .60 MPH)

TABLE 4G

VERMONT YANKEE JUL-SEP 1984 JOINT FREQUENCY DISTRIBUTION (UPPER LEVEL)

297.0 FT WIND DATA

STABILITY CLASS G

CLASS FREQUENCY (PERCENT) = .46

WIND DIRECTION FROM

| SPEED(MPH) | N | NNE | NE | ENE | E | ESE | SE | SSE | S | SSW | SW | WSW | W | WNW | NW | NNW | VRBL | TOTAL |
|------------|------|------|------|------|------|------|------|-------|-------|------|-------|-------|------|-------|-------|-------|------|--------|
| CALM | 0 | 0 | 0 | 0 | 0 | 0 | 0 | 0 | 0 | 0 | 0 | 0 | 0 | 0 | 0 | 0 | 0 | 0 |
| (1) | 0.00 | 0.00 | 0.00 | 0.00 | 0.00 | 0.00 | 0.00 | 0.00 | 0.00 | 0.00 | 0.00 | 0.00 | 0.00 | 0.00 | 0.00 | 0.00 | 0.00 | 0.00 |
| (2) | 0.00 | 0.00 | 0.00 | 0.00 | 0.00 | 0.00 | 0.00 | 0.00 | 0.00 | 0.00 | 0.00 | 0.00 | 0.00 | 0.00 | 0.00 | 0.00 | 0.00 | 0.00 |
| C-3 | 0 | 0 | 0 | 0 | 0 | 0 | 0 | 0 | 1 | 0 | 0 | 0 | 0 | 0 | 0 | 0 | 0 | 1 |
| (1) | 0.00 | 0.00 | 0.00 | 0.00 | 0.00 | 0.00 | 0.00 | 0.00 | 10.00 | 0.00 | 0.00 | 0.00 | 0.00 | 0.00 | 0.00 | 0.00 | 0.00 | 10.00 |
| (2) | 0.00 | 0.00 | 0.00 | 0.00 | 0.00 | 0.00 | 0.00 | 0.00 | .05 | 0.00 | 0.00 | 0.00 | 0.00 | 0.00 | 0.00 | 0.00 | 0.00 | .05 |
| 4-7 | 0 | 0 | 0 | 0 | 0 | 0 | 0 | 1 | 1 | 0 | 0 | 1 | 0 | 2 | 0 | 1 | 0 | 6 |
| (1) | 0.00 | 0.00 | 0.00 | 0.00 | 0.00 | 0.00 | 0.00 | 10.00 | 10.00 | 0.00 | 0.00 | 10.00 | 0.00 | 20.00 | 0.00 | 10.00 | 0.00 | 60.00 |
| (2) | 0.00 | 0.00 | 0.00 | 0.00 | 0.00 | 0.00 | 0.00 | .05 | .05 | 0.00 | 0.00 | .05 | 0.00 | .09 | 0.00 | .05 | 0.00 | .28 |
| 8-12 | 0 | 0 | 0 | 0 | 0 | 0 | 0 | 0 | 0 | 0 | 1 | 0 | 0 | 1 | 1 | 0 | 0 | 3 |
| (1) | 0.00 | 0.00 | 0.00 | 0.00 | 0.00 | 0.00 | 0.00 | 0.00 | 0.00 | 0.00 | 10.00 | 0.00 | 0.00 | 10.00 | 10.00 | 0.00 | 0.00 | 30.00 |
| (2) | 0.00 | 0.00 | 0.00 | 0.00 | 0.00 | 0.00 | 0.00 | 0.00 | 0.00 | 0.00 | .05 | 0.00 | 0.00 | .05 | .05 | 0.00 | 0.00 | .14 |
| 13-18 | 0 | 0 | 0 | 0 | 0 | 0 | 0 | 0 | 0 | 0 | 0 | 0 | 0 | 0 | 0 | 0 | 0 | 0 |
| (1) | 0.00 | 0.00 | 0.00 | 0.00 | 0.00 | 0.00 | 0.00 | 0.00 | 0.00 | 0.00 | 0.00 | 0.00 | 0.00 | 0.00 | 0.00 | 0.00 | 0.00 | 0.00 |
| (2) | 0.00 | 0.00 | 0.00 | 0.00 | 0.00 | 0.00 | 0.00 | 0.00 | 0.00 | 0.00 | 0.00 | 0.00 | 0.00 | 0.00 | 0.00 | 0.00 | 0.00 | 0.00 |
| 19-24 | 0 | 0 | 0 | 0 | 0 | 0 | 0 | 0 | 0 | 0 | 0 | 0 | 0 | 0 | 0 | 0 | 0 | 0 |
| (1) | 0.00 | 0.00 | 0.00 | 0.00 | 0.00 | 0.00 | 0.00 | 0.00 | 0.00 | 0.00 | 0.00 | 0.00 | 0.00 | 0.00 | 0.00 | 0.00 | 0.00 | 0.00 |
| (2) | 0.00 | 0.00 | 0.00 | 0.00 | 0.00 | 0.00 | 0.00 | 0.00 | 0.00 | 0.00 | 0.00 | 0.00 | 0.00 | 0.00 | 0.00 | 0.00 | 0.00 | 0.00 |
| GT 24 | 0 | 0 | 0 | 0 | 0 | 0 | 0 | 0 | 0 | 0 | 0 | 0 | 0 | 0 | 0 | 0 | 0 | 0 |
| (1) | 0.00 | 0.00 | 0.00 | 0.00 | 0.00 | 0.00 | 0.00 | 0.00 | 0.00 | 0.00 | 0.00 | 0.00 | 0.00 | 0.00 | 0.00 | 0.00 | 0.00 | 0.00 |
| (2) | 0.00 | 0.00 | 0.00 | 0.00 | 0.00 | 0.00 | 0.00 | 0.00 | 0.00 | 0.00 | 0.00 | 0.00 | 0.00 | 0.00 | 0.00 | 0.00 | 0.00 | 0.00 |
| ALL SPEEDS | 0 | 0 | 0 | 0 | 0 | 0 | 0 | 1 | 2 | 0 | 1 | 1 | 0 | 3 | 1 | 1 | 0 | 10 |
| (1) | 0.00 | 0.00 | 0.00 | 0.00 | 0.00 | 0.00 | 0.00 | 10.00 | 20.00 | 0.00 | 10.00 | 10.00 | 0.00 | 30.00 | 10.00 | 10.00 | 0.00 | 100.00 |
| (2) | 0.00 | 0.00 | 0.00 | 0.00 | 0.00 | 0.00 | 0.00 | .05 | .09 | 0.00 | .05 | .05 | 0.00 | .14 | .05 | .05 | 0.00 | .46 |

(1)=PERCENT OF ALL GOOD OBSERVATIONS FOR THIS PAGE

(2)=PERCENT OF ALL GOOD OBSERVATIONS FOR THIS PERIOD

C= CALM (WIND SPEED LESS THAN OR EQUAL TO .60 MPH)

TABLE 4H

VERMONT YANKEE JUL-SEP 1984 JOINT FREQUENCY DISTRIBUTION (UPPER LEVEL)

297.0 FT WIND DATA

STABILITY CLASS ALL

CLASS FREQUENCY (PERCENT) = 100.00

WIND DIRECTION FROM

| SPEED(MPH) | N | NNE | NE | ENE | E | ESE | SE | SSE | S | SSW | SW | WSW | W | WNW | NW | NNW | VRBL | TOTAL |
|------------|-------|------|------|------|------|------|-------|------|-------|------|------|------|------|------|------|-------|------|--------|
| CALM | 0 | 0 | 0 | 0 | 0 | 0 | 0 | 0 | 0 | 0 | 0 | 0 | 0 | 0 | 0 | 0 | 0 | 0 |
| (1) | 0.00 | 0.00 | 0.00 | 0.00 | 0.00 | 0.00 | 0.00 | 0.00 | 0.00 | 0.00 | 0.00 | 0.00 | 0.00 | 0.00 | 0.00 | 0.00 | 0.00 | 0.00 |
| (2) | 0.00 | 0.00 | 0.00 | 0.00 | 0.00 | 0.00 | 0.00 | 0.00 | 0.00 | 0.00 | 0.00 | 0.00 | 0.00 | 0.00 | 0.00 | 0.00 | 0.00 | 0.00 |
| C-3 | 101 | 47 | 44 | 40 | 39 | 53 | 54 | 44 | 24 | 10 | 12 | 7 | 7 | 12 | 16 | 61 | 0 | 571 |
| (1) | 4.65 | 2.16 | 2.03 | 1.84 | 1.80 | 2.44 | 2.49 | 2.03 | 1.11 | .46 | .55 | .32 | .32 | .55 | .74 | 2.81 | 0.00 | 26.30 |
| (2) | 4.65 | 2.16 | 2.03 | 1.84 | 1.80 | 2.44 | 2.49 | 2.03 | 1.11 | .46 | .55 | .32 | .32 | .55 | .74 | 2.81 | 0.00 | 26.30 |
| 4-7 | 135 | 27 | 13 | 17 | 32 | 44 | 126 | 86 | 49 | 26 | 13 | 12 | 15 | 18 | 19 | 140 | 0 | 772 |
| (1) | 6.22 | 1.24 | .60 | .78 | 1.47 | 2.03 | 5.80 | 3.96 | 2.26 | 1.20 | .60 | .55 | .69 | .83 | .88 | 6.45 | 0.00 | 35.56 |
| (2) | 6.22 | 1.24 | .60 | .78 | 1.47 | 2.03 | 5.80 | 3.96 | 2.26 | 1.20 | .60 | .55 | .69 | .83 | .88 | 6.45 | 0.00 | 35.56 |
| 8-12 | 51 | 11 | 2 | 1 | 5 | 15 | 43 | 74 | 122 | 39 | 16 | 16 | 28 | 24 | 19 | 80 | 0 | 546 |
| (1) | 2.35 | .51 | .09 | .05 | .23 | .69 | 1.98 | 3.41 | 5.62 | 1.80 | .74 | .74 | 1.29 | 1.11 | .88 | 3.68 | 0.00 | 25.15 |
| (2) | 2.35 | .51 | .09 | .05 | .23 | .69 | 1.98 | 3.41 | 5.62 | 1.80 | .74 | .74 | 1.29 | 1.11 | .88 | 3.68 | 0.00 | 25.15 |
| 13-18 | 25 | 3 | 0 | 0 | 0 | 1 | 1 | 7 | 75 | 18 | 7 | 4 | 14 | 24 | 12 | 62 | 0 | 253 |
| (1) | 1.15 | .14 | 0.00 | 0.00 | 0.00 | .05 | .05 | .32 | 3.45 | .83 | .32 | .18 | .64 | 1.11 | .55 | 2.86 | 0.00 | 11.65 |
| (2) | 1.15 | .14 | 0.00 | 0.00 | 0.00 | .05 | .05 | .32 | 3.45 | .83 | .32 | .18 | .64 | 1.11 | .55 | 2.86 | 0.00 | 11.65 |
| 19-24 | 2 | 0 | 0 | 0 | 0 | 0 | 0 | 0 | 5 | 1 | 1 | 0 | 0 | 2 | 6 | 12 | 0 | 29 |
| (1) | .09 | 0.00 | 0.00 | 0.00 | 0.00 | 0.00 | 0.00 | 0.00 | .23 | .05 | .05 | 0.00 | 0.00 | .09 | .28 | .55 | 0.00 | 1.34 |
| (2) | .09 | 0.00 | 0.00 | 0.00 | 0.00 | 0.00 | 0.00 | 0.00 | .23 | .05 | .05 | 0.00 | 0.00 | .09 | .28 | .55 | 0.00 | 1.34 |
| GT 24 | 0 | 0 | 0 | 0 | 0 | 0 | 0 | 0 | 0 | 0 | 0 | 0 | 0 | 0 | 0 | 0 | 0 | 0 |
| (1) | 0.00 | 0.00 | 0.00 | 0.00 | 0.00 | 0.00 | 0.00 | 0.00 | 0.00 | 0.00 | 0.00 | 0.00 | 0.00 | 0.00 | 0.00 | 0.00 | 0.00 | 0.00 |
| (2) | 0.00 | 0.00 | 0.00 | 0.00 | 0.00 | 0.00 | 0.00 | 0.00 | 0.00 | 0.00 | 0.00 | 0.00 | 0.00 | 0.00 | 0.00 | 0.00 | 0.00 | 0.00 |
| ALL SPEEDS | 314 | 88 | 59 | 58 | 76 | 113 | 224 | 211 | 275 | 94 | 49 | 39 | 64 | 80 | 72 | 355 | 0 | 2171 |
| (1) | 14.46 | 4.05 | 2.72 | 2.67 | 3.50 | 5.20 | 10.32 | 9.72 | 12.67 | 4.33 | 2.26 | 1.80 | 2.95 | 3.68 | 3.32 | 16.35 | 0.00 | 100.00 |
| (2) | 14.46 | 4.05 | 2.72 | 2.67 | 3.50 | 5.20 | 10.32 | 9.72 | 12.67 | 4.33 | 2.26 | 1.80 | 2.95 | 3.68 | 3.32 | 16.35 | 0.00 | 100.00 |

(1)=PERCENT OF ALL GOOD OBSERVATIONS FOR THIS PAGE

(2)=PERCENT OF ALL GOOD OBSERVATIONS FOR THIS PERIOD

C= CALM (WIND SPEED LESS THAN OR EQUAL TO .60 MPH)

TABLE 5A

VERMONT YANKEE OCT-DEC 1984 JOINT FREQUENCY DISTRIBUTION (UPPER LEVEL)

297.0 FT WIND DATA

STABILITY CLASS A

CLASS FREQUENCY (PERCENT) = .23

WIND DIRECTION FROM

| SPEED(MPH) | N | NNE | NE | ENE | E | ESE | SE | SSE | S | SSW | SW | WSW | W | WNW | NW | NNW | VRBL | TOTAL |
|------------|------|------|------|------|------|-------|-------|------|------|------|------|------|------|------|------|-------|------|--------|
| CALM | 0 | 0 | 0 | 0 | 0 | 0 | 0 | 0 | 0 | 0 | 0 | 0 | 0 | 0 | 0 | 0 | 0 | 0 |
| (1) | 0.00 | 0.00 | 0.00 | 0.00 | 0.00 | 0.00 | 0.00 | 0.00 | 0.00 | 0.00 | 0.00 | 0.00 | 0.00 | 0.00 | 0.00 | 0.00 | 0.00 | 0.00 |
| (2) | 0.00 | 0.00 | 0.00 | 0.00 | 0.00 | 0.00 | 0.00 | 0.00 | 0.00 | 0.00 | 0.00 | 0.00 | 0.00 | 0.00 | 0.00 | 0.00 | 0.00 | 0.00 |
| C-3 | 0 | 0 | 0 | 0 | 0 | 0 | 1 | 0 | 0 | 0 | 0 | 0 | 0 | 0 | 0 | 0 | 0 | 1 |
| (1) | 0.00 | 0.00 | 0.00 | 0.00 | 0.00 | 0.00 | 20.00 | 0.00 | 0.00 | 0.00 | 0.00 | 0.00 | 0.00 | 0.00 | 0.00 | 0.00 | 0.00 | 20.00 |
| (2) | 0.00 | 0.00 | 0.00 | 0.00 | 0.00 | 0.00 | .05 | 0.00 | 0.00 | 0.00 | 0.00 | 0.00 | 0.00 | 0.00 | 0.00 | 0.00 | 0.00 | .05 |
| 4-7 | 0 | 0 | 0 | 0 | 0 | 0 | 1 | 0 | 0 | 0 | 0 | 0 | 0 | 0 | 0 | 0 | 0 | 1 |
| (1) | 0.00 | 0.00 | 0.00 | 0.00 | 0.00 | 0.00 | 20.00 | 0.00 | 0.00 | 0.00 | 0.00 | 0.00 | 0.00 | 0.00 | 0.00 | 0.00 | 0.00 | 20.00 |
| (2) | 0.00 | 0.00 | 0.00 | 0.00 | 0.00 | 0.00 | .05 | 0.00 | 0.00 | 0.00 | 0.00 | 0.00 | 0.00 | 0.00 | 0.00 | 0.00 | 0.00 | .05 |
| 8-12 | 0 | 0 | 0 | 0 | 0 | 1 | 0 | 0 | 0 | 0 | 0 | 0 | 0 | 0 | 0 | 0 | 0 | 1 |
| (1) | 0.00 | 0.00 | 0.00 | 0.00 | 0.00 | 20.00 | 0.00 | 0.00 | 0.00 | 0.00 | 0.00 | 0.00 | 0.00 | 0.00 | 0.00 | 0.00 | 0.00 | 20.00 |
| (2) | 0.00 | 0.00 | 0.00 | 0.00 | 0.00 | .05 | 0.00 | 0.00 | 0.00 | 0.00 | 0.00 | 0.00 | 0.00 | 0.00 | 0.00 | 0.00 | 0.00 | .05 |
| 13-18 | 0 | 0 | 0 | 0 | 0 | 0 | 0 | 0 | 0 | 0 | 0 | 0 | 0 | 0 | 0 | 2 | 0 | 2 |
| (1) | 0.00 | 0.00 | 0.00 | 0.00 | 0.00 | 0.00 | 0.00 | 0.00 | 0.00 | 0.00 | 0.00 | 0.00 | 0.00 | 0.00 | 0.00 | 40.00 | 0.00 | 40.00 |
| (2) | 0.00 | 0.00 | 0.00 | 0.00 | 0.00 | 0.00 | 0.00 | 0.00 | 0.00 | 0.00 | 0.00 | 0.00 | 0.00 | 0.00 | 0.00 | .09 | 0.00 | .09 |
| 19-24 | 0 | 0 | 0 | 0 | 0 | 0 | 0 | 0 | 0 | 0 | 0 | 0 | 0 | 0 | 0 | 0 | 0 | 0 |
| (1) | 0.00 | 0.00 | 0.00 | 0.00 | 0.00 | 0.00 | 0.00 | 0.00 | 0.00 | 0.00 | 0.00 | 0.00 | 0.00 | 0.00 | 0.00 | 0.00 | 0.00 | 0.00 |
| (2) | 0.00 | 0.00 | 0.00 | 0.00 | 0.00 | 0.00 | 0.00 | 0.00 | 0.00 | 0.00 | 0.00 | 0.00 | 0.00 | 0.00 | 0.00 | 0.00 | 0.00 | 0.00 |
| GT 24 | 0 | 0 | 0 | 0 | 0 | 0 | 0 | 0 | 0 | 0 | 0 | 0 | 0 | 0 | 0 | 0 | 0 | 0 |
| (1) | 0.00 | 0.00 | 0.00 | 0.00 | 0.00 | 0.00 | 0.00 | 0.00 | 0.00 | 0.00 | 0.00 | 0.00 | 0.00 | 0.00 | 0.00 | 0.00 | 0.00 | 0.00 |
| (2) | 0.00 | 0.00 | 0.00 | 0.00 | 0.00 | 0.00 | 0.00 | 0.00 | 0.00 | 0.00 | 0.00 | 0.00 | 0.00 | 0.00 | 0.00 | 0.00 | 0.00 | 0.00 |
| ALL SPEEDS | 0 | 0 | 0 | 0 | 0 | 1 | 2 | 0 | 0 | 0 | 0 | 0 | 0 | 0 | 0 | 2 | 0 | 5 |
| (1) | 0.00 | 0.00 | 0.00 | 0.00 | 0.00 | 20.00 | 40.00 | 0.00 | 0.00 | 0.00 | 0.00 | 0.00 | 0.00 | 0.00 | 0.00 | 40.00 | 0.00 | 100.00 |
| (2) | 0.00 | 0.00 | 0.00 | 0.00 | 0.00 | .05 | .09 | 0.00 | 0.00 | 0.00 | 0.00 | 0.00 | 0.00 | 0.00 | 0.00 | .09 | 0.00 | .23 |

(1)=PERCENT OF ALL GOOD OBSERVATIONS FOR THIS PAGE

(2)=PERCENT OF ALL GOOD OBSERVATIONS FOR THIS PERIOD

C= CALM (WIND SPEED LESS THAN OR EQUAL TO .60 MPH)

TABLE 5B

VERMONT YANKEE OCT-DEC 1984 JOINT FREQUENCY DISTRIBUTION (UPPER LEVEL)

297.0 FT WIND DATA

STABILITY CLASS B

CLASS FREQUENCY (PERCENT) = .82

WIND DIRECTION FROM

| SPEED(MPH) | N | NNE | NE | ENE | E | ESE | SE | SSE | S | SSW | SW | WSW | W | WNW | NW | NNW | VRBL | TOTAL |
|------------|-------|------|------|------|------|------|------|------|-------|------|------|------|------|------|------|-------|------|--------|
| CALM | 0 | 0 | 0 | 0 | 0 | 0 | 0 | 0 | 0 | 0 | 0 | 0 | 0 | 0 | 0 | 0 | 0 | 0 |
| (1) | 0.00 | 0.00 | 0.00 | 0.00 | 0.00 | 0.00 | 0.00 | 0.00 | 0.00 | 0.00 | 0.00 | 0.00 | 0.00 | 0.00 | 0.00 | 0.00 | 0.00 | 0.00 |
| (2) | 0.00 | 0.00 | 0.00 | 0.00 | 0.00 | 0.00 | 0.00 | 0.00 | 0.00 | 0.00 | 0.00 | 0.00 | 0.00 | 0.00 | 0.00 | 0.00 | 0.00 | 0.00 |
| C-3 | 1 | 0 | 0 | 0 | 0 | 0 | 0 | 0 | 0 | 0 | 0 | 0 | 0 | 0 | 0 | 0 | 0 | 1 |
| (1) | 5.56 | 0.00 | 0.00 | 0.00 | 0.00 | 0.00 | 0.00 | 0.00 | 0.00 | 0.00 | 0.00 | 0.00 | 0.00 | 0.00 | 0.00 | 0.00 | 0.00 | 5.56 |
| (2) | .05 | 0.00 | 0.00 | 0.00 | 0.00 | 0.00 | 0.00 | 0.00 | 0.00 | 0.00 | 0.00 | 0.00 | 0.00 | 0.00 | 0.00 | 0.00 | 0.00 | .05 |
| 4-7 | 1 | 0 | 0 | 0 | 0 | 0 | 0 | 0 | 0 | 0 | 0 | 0 | 0 | 0 | 1 | 0 | 0 | 2 |
| (1) | 5.56 | 0.00 | 0.00 | 0.00 | 0.00 | 0.00 | 0.00 | 0.00 | 0.00 | 0.00 | 0.00 | 0.00 | 0.00 | 0.00 | 5.56 | 0.00 | 0.00 | 11.11 |
| (2) | .05 | 0.00 | 0.00 | 0.00 | 0.00 | 0.00 | 0.00 | 0.00 | 0.00 | 0.00 | 0.00 | 0.00 | 0.00 | 0.00 | .05 | 0.00 | 0.00 | .09 |
| 8-12 | 0 | 0 | 0 | 0 | 0 | 0 | 0 | 1 | 0 | 0 | 0 | 0 | 0 | 0 | 0 | 2 | 0 | 3 |
| (1) | 0.00 | 0.00 | 0.00 | 0.00 | 0.00 | 0.00 | 0.00 | 5.56 | 0.00 | 0.00 | 0.00 | 0.00 | 0.00 | 0.00 | 0.00 | 11.11 | 0.00 | 16.67 |
| (2) | 0.00 | 0.00 | 0.00 | 0.00 | 0.00 | 0.00 | 0.00 | .05 | 0.00 | 0.00 | 0.00 | 0.00 | 0.00 | 0.00 | 0.00 | .09 | 0.00 | .14 |
| 13-18 | 1 | 0 | 0 | 0 | 0 | 0 | 0 | 0 | 2 | 0 | 0 | 0 | 0 | 1 | 0 | 5 | 0 | 9 |
| (1) | 5.56 | 0.00 | 0.00 | 0.00 | 0.00 | 0.00 | 0.00 | 0.00 | 11.11 | 0.00 | 0.00 | 0.00 | 0.00 | 5.56 | 0.00 | 27.78 | 0.00 | 50.00 |
| (2) | .05 | 0.00 | 0.00 | 0.00 | 0.00 | 0.00 | 0.00 | 0.00 | .09 | 0.00 | 0.00 | 0.00 | 0.00 | .05 | 0.00 | .23 | 0.00 | .41 |
| 19-24 | 0 | 0 | 0 | 0 | 0 | 0 | 0 | 0 | 0 | 0 | 0 | 0 | 0 | 0 | 0 | 3 | 0 | 3 |
| (1) | 0.00 | 0.00 | 0.00 | 0.00 | 0.00 | 0.00 | 0.00 | 0.00 | 0.00 | 0.00 | 0.00 | 0.00 | 0.00 | 0.00 | 0.00 | 16.67 | 0.00 | 16.67 |
| (2) | 0.00 | 0.00 | 0.00 | 0.00 | 0.00 | 0.00 | 0.00 | 0.00 | 0.00 | 0.00 | 0.00 | 0.00 | 0.00 | 0.00 | 0.00 | .14 | 0.00 | .14 |
| GT 24 | 0 | 0 | 0 | 0 | 0 | 0 | 0 | 0 | 0 | 0 | 0 | 0 | 0 | 0 | 0 | 0 | 0 | 0 |
| (1) | 0.00 | 0.00 | 0.00 | 0.00 | 0.00 | 0.00 | 0.00 | 0.00 | 0.00 | 0.00 | 0.00 | 0.00 | 0.00 | 0.00 | 0.00 | 0.00 | 0.00 | 0.00 |
| (2) | 0.00 | 0.00 | 0.00 | 0.00 | 0.00 | 0.00 | 0.00 | 0.00 | 0.00 | 0.00 | 0.00 | 0.00 | 0.00 | 0.00 | 0.00 | 0.00 | 0.00 | 0.00 |
| ALL SPEEDS | 3 | 0 | 0 | 0 | 0 | 0 | 0 | 1 | 2 | 0 | 0 | 0 | 0 | 1 | 1 | 10 | 0 | 18 |
| (1) | 16.67 | 0.00 | 0.00 | 0.00 | 0.00 | 0.00 | 0.00 | 5.56 | 11.11 | 0.00 | 0.00 | 0.00 | 0.00 | 5.56 | 5.56 | 55.56 | 0.00 | 100.00 |
| (2) | .14 | 0.00 | 0.00 | 0.00 | 0.00 | 0.00 | 0.00 | .05 | .09 | 0.00 | 0.00 | 0.00 | 0.00 | .05 | .05 | .46 | 0.00 | .82 |

(1)=PERCENT OF ALL GOOD OBSERVATIONS FOR THIS PAGE

(2)=PERCENT OF ALL GOOD OBSERVATIONS FOR THIS PERIOD

C= CALM (WIND SPEED LESS THAN OR EQUAL TO .60 MPH)

TABLE 5C

VERMONT YANKEE OCT-DEC 1984 JOINT FREQUENCY DISTRIBUTION (UPPER LEVEL)

297.0 FT WIND DATA

STABILITY CLASS C

CLASS FREQUENCY (PERCENT) = 2.56

WIND DIRECTION FROM

| SPEED(MPH) | N | NNE | NE | ENE | E | ESE | SE | SSE | S | SSW | SW | WSW | W | WNW | NW | NNW | VRBL | TOTAL |
|------------|-------|------|------|------|------|------|------|------|-------|------|------|------|------|------|-------|-------|------|--------|
| CALM | 0 | 0 | 0 | 0 | 0 | 0 | 0 | 0 | 0 | 0 | 0 | 0 | 0 | 0 | 0 | 0 | 0 | 0 |
| (1) | 0.00 | 0.00 | 0.00 | 0.00 | 0.00 | 0.00 | 0.00 | 0.00 | 0.00 | 0.00 | 0.00 | 0.00 | 0.00 | 0.00 | 0.00 | 0.00 | 0.00 | 0.00 |
| (2) | 0.00 | 0.00 | 0.00 | 0.00 | 0.00 | 0.00 | 0.00 | 0.00 | 0.00 | 0.00 | 0.00 | 0.00 | 0.00 | 0.00 | 0.00 | 0.00 | 0.00 | 0.00 |
| C-3 | 2 | 0 | 0 | 0 | 0 | 0 | 1 | 0 | 1 | 0 | 0 | 0 | 0 | 0 | 0 | 0 | 0 | 4 |
| (1) | 3.57 | 0.00 | 0.00 | 0.00 | 0.00 | 0.00 | 1.79 | 0.00 | 1.79 | 0.00 | 0.00 | 0.00 | 0.00 | 0.00 | 0.00 | 0.00 | 0.00 | 7.14 |
| (2) | .09 | 0.00 | 0.00 | 0.00 | 0.00 | 0.00 | .05 | 0.00 | .05 | 0.00 | 0.00 | 0.00 | 0.00 | 0.00 | 0.00 | 0.00 | 0.00 | .18 |
| 4-7 | 1 | 0 | 0 | 0 | 0 | 0 | 0 | 0 | 1 | 0 | 0 | 0 | 0 | 2 | 2 | 5 | 0 | 11 |
| (1) | 1.79 | 0.00 | 0.00 | 0.00 | 0.00 | 0.00 | 0.00 | 0.00 | 1.79 | 0.00 | 0.00 | 0.00 | 0.00 | 3.57 | 3.57 | 8.93 | 0.00 | 19.64 |
| (2) | .05 | 0.00 | 0.00 | 0.00 | 0.00 | 0.00 | 0.00 | 0.00 | .05 | 0.00 | 0.00 | 0.00 | 0.00 | .09 | .09 | .23 | 0.00 | .50 |
| 8-12 | 1 | 0 | 0 | 0 | 0 | 1 | 0 | 3 | 3 | 1 | 0 | 0 | 0 | 0 | 1 | 5 | 0 | 15 |
| (1) | 1.79 | 0.00 | 0.00 | 0.00 | 0.00 | 1.79 | 0.00 | 5.36 | 5.36 | 1.79 | 0.00 | 0.00 | 0.00 | 0.00 | 1.79 | 8.93 | 0.00 | 26.79 |
| (2) | .05 | 0.00 | 0.00 | 0.00 | 0.00 | .05 | 0.00 | .14 | .14 | .05 | 0.00 | 0.00 | 0.00 | 0.00 | .05 | .23 | 0.00 | .68 |
| 13-18 | 6 | 0 | 0 | 0 | 0 | 0 | 0 | 0 | 2 | 0 | 0 | 0 | 0 | 0 | 2 | 8 | 0 | 18 |
| (1) | 10.71 | 0.00 | 0.00 | 0.00 | 0.00 | 0.00 | 0.00 | 0.00 | 3.57 | 0.00 | 0.00 | 0.00 | 0.00 | 0.00 | 3.57 | 14.29 | 0.00 | 32.14 |
| (2) | .27 | 0.00 | 0.00 | 0.00 | 0.00 | 0.00 | 0.00 | 0.00 | .09 | 0.00 | 0.00 | 0.00 | 0.00 | 0.00 | .09 | .37 | 0.00 | .82 |
| 19-24 | 0 | 0 | 0 | 0 | 0 | 0 | 0 | 0 | 0 | 0 | 0 | 0 | 0 | 0 | 1 | 6 | 0 | 7 |
| (1) | 0.00 | 0.00 | 0.00 | 0.00 | 0.00 | 0.00 | 0.00 | 0.00 | 0.00 | 0.00 | 0.00 | 0.00 | 0.00 | 0.00 | 1.79 | 10.71 | 0.00 | 12.50 |
| (2) | 0.00 | 0.00 | 0.00 | 0.00 | 0.00 | 0.00 | 0.00 | 0.00 | 0.00 | 0.00 | 0.00 | 0.00 | 0.00 | 0.00 | .05 | .27 | 0.00 | .32 |
| GT 24 | 0 | 0 | 0 | 0 | 0 | 0 | 0 | 0 | 0 | 0 | 0 | 0 | 0 | 0 | 0 | 1 | 0 | 1 |
| (1) | 0.00 | 0.00 | 0.00 | 0.00 | 0.00 | 0.00 | 0.00 | 0.00 | 0.00 | 0.00 | 0.00 | 0.00 | 0.00 | 0.00 | 0.00 | 1.79 | 0.00 | 1.79 |
| (2) | 0.00 | 0.00 | 0.00 | 0.00 | 0.00 | 0.00 | 0.00 | 0.00 | 0.00 | 0.00 | 0.00 | 0.00 | 0.00 | 0.00 | 0.00 | .05 | 0.00 | .05 |
| ALL SPEEDS | 10 | 0 | 0 | 0 | 0 | 1 | 1 | 3 | 7 | 1 | 0 | 0 | 0 | 2 | 6 | 25 | 0 | 56 |
| (1) | 17.86 | 0.00 | 0.00 | 0.00 | 0.00 | 1.79 | 1.79 | 5.36 | 12.50 | 1.79 | 0.00 | 0.00 | 0.00 | 3.57 | 10.71 | 44.64 | 0.00 | 100.00 |
| (2) | .46 | 0.00 | 0.00 | 0.00 | 0.00 | .05 | .05 | .14 | .32 | .05 | 0.00 | 0.00 | 0.00 | .09 | .27 | 1.14 | 0.00 | 2.56 |

(1)=PERCENT OF ALL GOOD OBSERVATIONS FOR THIS PAGE

(2)=PERCENT OF ALL GOOD OBSERVATIONS FOR THIS PERIOD

C= CALM (WIND SPEED LESS THAN OR EQUAL TO .60 MPH)

TABLE 5D

VERMONT YANKEE OCT-DEC 1984 JOINT FREQUENCY DISTRIBUTION (UPPER LEVEL)

297.0 FT WIND DATA

STABILITY CLASS D

CLASS FREQUENCY (PERCENT) = 42.74

WIND DIRECTION FROM

| SPEED(MPH) | N | NNE | NE | ENE | E | ESE | SE | SSE | S | SSW | SW | WSW | W | WNW | NW | NNW | VRBL | TOTAL |
|------------|-------|------|------|------|------|------|------|------|-------|------|------|------|------|-------|-------|-------|------|--------|
| CALM | 0 | 0 | 0 | 0 | 0 | 0 | 0 | 0 | 0 | 0 | 0 | 0 | 0 | 0 | 0 | 0 | 0 | 0 |
| (1) | 0.00 | 0.00 | 0.00 | 0.00 | 0.00 | 0.00 | 0.00 | 0.00 | 0.00 | 0.00 | 0.00 | 0.00 | 0.00 | 0.00 | 0.00 | 0.00 | 0.00 | 0.00 |
| (2) | 0.00 | 0.00 | 0.00 | 0.00 | 0.00 | 0.00 | 0.00 | 0.00 | 0.00 | 0.00 | 0.00 | 0.00 | 0.00 | 0.00 | 0.00 | 0.00 | 0.00 | 0.00 |
| C-3 | 16 | 8 | 3 | 9 | 7 | 8 | 7 | 10 | 6 | 2 | 4 | 2 | 5 | 3 | 19 | 24 | 0 | 133 |
| (1) | 1.71 | .85 | .32 | .96 | .75 | .85 | .75 | 1.07 | .64 | .21 | .43 | .21 | .53 | .32 | 2.03 | 2.56 | 0.00 | 14.21 |
| (2) | .73 | .37 | .14 | .41 | .32 | .37 | .32 | .46 | .27 | .09 | .18 | .09 | .23 | .14 | .87 | 1.10 | 0.00 | 6.07 |
| 4-7 | 28 | 3 | 4 | 4 | 5 | 3 | 28 | 23 | 26 | 5 | 5 | 2 | 3 | 3 | 10 | 60 | 0 | 212 |
| (1) | 2.99 | .32 | .43 | .43 | .53 | .32 | 2.99 | 2.46 | 2.78 | .53 | .53 | .21 | .32 | .32 | 1.07 | 6.41 | 0.00 | 22.65 |
| (2) | 1.28 | .14 | .18 | .18 | .23 | .14 | 1.28 | 1.05 | 1.19 | .23 | .23 | .09 | .14 | .14 | .46 | 2.74 | 0.00 | 9.68 |
| 8-12 | 38 | 11 | 0 | 2 | 4 | 0 | 10 | 29 | 44 | 6 | 3 | 5 | 19 | 35 | 20 | 47 | 0 | 273 |
| (1) | 4.06 | 1.18 | 0.00 | .21 | .43 | 0.00 | 1.07 | 3.10 | 4.70 | .64 | .32 | .53 | 2.03 | 3.74 | 2.14 | 5.02 | 0.00 | 29.17 |
| (2) | 1.74 | .50 | 0.00 | .09 | .18 | 0.00 | .46 | 1.32 | 2.01 | .27 | .14 | .23 | .87 | 1.60 | .91 | 2.15 | 0.00 | 12.47 |
| 13-18 | 40 | 6 | 0 | 0 | 0 | 0 | 0 | 4 | 19 | 1 | 2 | 0 | 16 | 59 | 35 | 49 | 0 | 231 |
| (1) | 4.27 | .64 | 0.00 | 0.00 | 0.00 | 0.00 | 0.00 | .43 | 2.03 | .11 | .21 | 0.00 | 1.71 | 6.30 | 3.74 | 5.24 | 0.00 | 24.68 |
| (2) | 1.83 | .27 | 0.00 | 0.00 | 0.00 | 0.00 | 0.00 | .18 | .87 | .05 | .09 | 0.00 | .73 | 2.69 | 1.60 | 2.24 | 0.00 | 10.55 |
| 19-24 | 7 | 0 | 0 | 0 | 0 | 0 | 0 | 0 | 0 | 0 | 0 | 0 | 2 | 21 | 10 | 27 | 0 | 67 |
| (1) | .75 | 0.00 | 0.00 | 0.00 | 0.00 | 0.00 | 0.00 | 0.00 | 0.00 | 0.00 | 0.00 | 0.00 | .21 | 2.24 | 1.07 | 2.83 | 0.00 | 7.16 |
| (2) | .32 | 0.00 | 0.00 | 0.00 | 0.00 | 0.00 | 0.00 | 0.00 | 0.00 | 0.00 | 0.00 | 0.00 | .09 | .96 | .46 | 1.23 | 0.00 | 3.06 |
| GT 24 | 3 | 0 | 0 | 0 | 0 | 0 | 0 | 0 | 0 | 0 | 0 | 0 | 0 | 4 | 4 | 9 | 0 | 20 |
| (1) | .32 | 0.00 | 0.00 | 0.00 | 0.00 | 0.00 | 0.00 | 0.00 | 0.00 | 0.00 | 0.00 | 0.00 | 0.00 | .43 | .43 | .96 | 0.00 | 2.14 |
| (2) | .14 | 0.00 | 0.00 | 0.00 | 0.00 | 0.00 | 0.00 | 0.00 | 0.00 | 0.00 | 0.00 | 0.00 | 0.00 | .18 | .18 | .41 | 0.00 | .91 |
| ALL SPEEDS | 132 | 28 | 7 | 15 | 16 | 11 | 45 | 66 | 95 | 14 | 14 | 9 | 45 | 125 | 98 | 216 | 0 | 936 |
| (1) | 14.10 | 2.99 | .75 | 1.60 | 1.71 | 1.18 | 4.81 | 7.05 | 10.15 | 1.50 | 1.50 | .96 | 4.81 | 13.35 | 10.47 | 23.08 | 0.00 | 100.00 |
| (2) | 6.03 | 1.28 | .32 | .68 | .73 | .50 | 2.05 | 3.01 | 4.34 | .64 | .64 | .41 | 2.05 | 5.71 | 4.47 | 9.86 | 0.00 | 42.74 |

(1)=PERCENT OF ALL GOOD OBSERVATIONS FOR THIS PAGE

(2)=PERCENT OF ALL GOOD OBSERVATIONS FOR THIS PERIOD

C= CALM (WIND SPEED LESS THAN OR EQUAL TO .60 MPH)

TABLE 5E

VERMONT YANKEE OCT-DEC 1984 JOINT FREQUENCY DISTRIBUTION (UPPER LEVEL)

297.0 FT WIND DATA

STABILITY CLASS E

CLASS FREQUENCY (PERCENT) = 36.99

WIND DIRECTION FROM

| SPEED(MPH) | N | NNE | NE | ENE | E | ESE | SE | SSE | S | SSW | SW | WSW | W | WNW | NW | NNW | VRBL | TOTAL |
|------------|-------|------|------|------|------|------|------|-------|------|------|------|------|------|------|------|-------|------|--------|
| CALM | 0 | 0 | 0 | 0 | 0 | 0 | 0 | 0 | 0 | 0 | 0 | 0 | 0 | 0 | 0 | 0 | 0 | 0 |
| (1) | 0.00 | 0.00 | 0.00 | 0.00 | 0.00 | 0.00 | 0.00 | 0.00 | 0.00 | 0.00 | 0.00 | 0.00 | 0.00 | 0.00 | 0.00 | 0.00 | 0.00 | 0.00 |
| (2) | 0.00 | 0.00 | 0.00 | 0.00 | 0.00 | 0.00 | 0.00 | 0.00 | 0.00 | 0.00 | 0.00 | 0.00 | 0.00 | 0.00 | 0.00 | 0.00 | 0.00 | 0.00 |
| C-3 | 26 | 11 | 12 | 9 | 17 | 13 | 14 | 15 | 13 | 6 | 3 | 2 | 5 | 9 | 14 | 24 | 0 | 193 |
| (1) | 3.21 | 1.36 | 1.48 | 1.11 | 2.10 | 1.60 | 1.73 | 1.85 | 1.60 | .74 | .37 | .25 | .62 | 1.11 | 1.73 | 2.96 | 0.00 | 23.83 |
| (2) | 1.19 | .50 | .55 | .41 | .78 | .59 | .64 | .68 | .59 | .27 | .14 | .09 | .23 | .41 | .64 | 1.10 | 0.00 | 8.81 |
| 4-7 | 55 | 7 | 3 | 2 | 6 | 7 | 44 | 44 | 18 | 8 | 4 | 4 | 2 | 6 | 22 | 63 | 0 | 295 |
| (1) | 6.79 | .86 | .37 | .25 | .74 | .86 | 5.43 | 5.43 | 2.22 | .99 | .49 | .49 | .25 | .74 | 2.72 | 7.78 | 0.00 | 36.42 |
| (2) | 2.51 | .32 | .14 | .09 | .27 | .32 | 2.01 | 2.01 | .82 | .37 | .18 | .18 | .09 | .27 | 1.00 | 2.88 | 0.00 | 13.47 |
| 8-12 | 23 | 3 | 1 | 0 | 0 | 1 | 10 | 26 | 33 | 12 | 4 | 2 | 12 | 21 | 14 | 64 | 0 | 226 |
| (1) | 2.84 | .37 | .12 | 0.00 | 0.00 | .12 | 1.23 | 3.21 | 4.07 | 1.48 | .49 | .25 | 1.48 | 2.59 | 1.73 | 7.90 | 0.00 | 27.90 |
| (2) | 1.05 | .14 | .05 | 0.00 | 0.00 | .05 | .46 | 1.19 | 1.51 | .55 | .18 | .09 | .55 | .96 | .64 | 2.92 | 0.00 | 10.32 |
| 13-18 | 5 | 1 | 0 | 0 | 0 | 0 | 0 | 3 | 15 | 4 | 1 | 0 | 6 | 21 | 11 | 20 | 0 | 87 |
| (1) | .62 | .12 | 0.00 | 0.00 | 0.00 | 0.00 | 0.00 | .37 | 1.85 | .49 | .12 | 0.00 | .74 | 2.59 | 1.36 | 2.47 | 0.00 | 10.74 |
| (2) | .23 | .05 | 0.00 | 0.00 | 0.00 | 0.00 | 0.00 | .14 | .68 | .18 | .05 | 0.00 | .27 | .96 | .50 | .91 | 0.00 | 3.97 |
| 19-24 | 0 | 0 | 0 | 0 | 0 | 0 | 0 | 0 | 1 | 1 | 0 | 0 | 0 | 2 | 3 | 2 | 0 | 9 |
| (1) | 0.00 | 0.00 | 0.00 | 0.00 | 0.00 | 0.00 | 0.00 | 0.00 | .12 | .12 | 0.00 | 0.00 | 0.00 | .25 | .37 | .25 | 0.00 | 1.11 |
| (2) | 0.00 | 0.00 | 0.00 | 0.00 | 0.00 | 0.00 | 0.00 | 0.00 | .05 | .05 | 0.00 | 0.00 | 0.00 | .09 | .14 | .09 | 0.00 | .41 |
| GT 24 | 0 | 0 | 0 | 0 | 0 | 0 | 0 | 0 | 0 | 0 | 0 | 0 | 0 | 0 | 0 | 0 | 0 | 0 |
| (1) | 0.00 | 0.00 | 0.00 | 0.00 | 0.00 | 0.00 | 0.00 | 0.00 | 0.00 | 0.00 | 0.00 | 0.00 | 0.00 | 0.00 | 0.00 | 0.00 | 0.00 | 0.00 |
| (2) | 0.00 | 0.00 | 0.00 | 0.00 | 0.00 | 0.00 | 0.00 | 0.00 | 0.00 | 0.00 | 0.00 | 0.00 | 0.00 | 0.00 | 0.00 | 0.00 | 0.00 | 0.00 |
| ALL SPEEDS | 109 | 22 | 16 | 11 | 23 | 21 | 68 | 88 | 80 | 31 | 12 | 8 | 25 | 59 | 64 | 173 | 0 | 810 |
| (1) | 13.46 | 2.72 | 1.98 | 1.36 | 2.84 | 2.59 | 8.40 | 10.86 | 9.88 | 3.83 | 1.48 | .99 | 3.09 | 7.28 | 7.90 | 21.36 | 0.00 | 100.00 |
| (2) | 4.98 | 1.00 | .73 | .50 | 1.05 | .96 | 3.11 | 4.02 | 3.65 | 1.42 | .55 | .37 | 1.14 | 2.69 | 2.92 | 7.90 | 0.00 | 36.99 |

(1)=PERCENT OF ALL GOOD OBSERVATIONS FOR THIS PAGE

(2)=PERCENT OF ALL GOOD OBSERVATIONS FOR THIS PERIOD

C= CALM (WIND SPEED LESS THAN OR EQUAL TO .60 MPH)

TABLE 5F

VERMONT YANKEE OCT-DEC 1984 JOINT FREQUENCY DISTRIBUTION (UPPER LEVEL)

297.0 FT WIND DATA

STABILITY CLASS F

CLASS FREQUENCY (PERCENT) = 13.74

WIND DIRECTION FROM

| SPEED(MPH) | N | NNE | NE | ENE | E | ESE | SE | SSE | S | SSW | SW | WSW | W | WNW | NW | NNW | VREL | TOTAL |
|------------|-------|------|------|------|------|------|-------|-------|------|------|------|------|------|------|------|-------|------|--------|
| CALM | 0 | 0 | 0 | 0 | 0 | 0 | 0 | 0 | 0 | 0 | 0 | 0 | 0 | 0 | 0 | 0 | 0 | 0 |
| (1) | 0.00 | 0.00 | 0.00 | 0.00 | 0.00 | 0.00 | 0.00 | 0.00 | 0.00 | 0.00 | 0.00 | 0.00 | 0.00 | 0.00 | 0.00 | 0.00 | 0.00 | 0.00 |
| (2) | 0.00 | 0.00 | 0.00 | 0.00 | 0.00 | 0.00 | 0.00 | 0.00 | 0.00 | 0.00 | 0.00 | 0.00 | 0.00 | 0.00 | 0.00 | 0.00 | 0.00 | 0.00 |
| C-3 | 7 | 7 | 9 | 3 | 6 | 4 | 12 | 9 | 6 | 2 | 0 | 2 | 3 | 2 | 6 | 11 | 0 | 89 |
| (1) | 2.33 | 2.33 | 2.99 | 1.00 | 1.99 | 1.33 | 3.99 | 2.99 | 1.99 | .66 | 0.00 | .66 | 1.00 | .66 | 1.99 | 3.65 | 0.00 | 29.57 |
| (2) | .32 | .32 | .41 | .14 | .27 | .18 | .55 | .41 | .27 | .09 | 0.00 | .09 | .14 | .09 | .27 | .50 | 0.00 | 4.06 |
| 4-7 | 16 | 3 | 2 | 2 | 4 | 9 | 20 | 13 | 8 | 3 | 5 | 4 | 5 | 6 | 4 | 24 | 0 | 128 |
| (1) | 5.32 | 1.00 | .66 | .66 | 1.33 | 2.99 | 6.64 | 4.32 | 2.66 | 1.00 | 1.66 | 1.33 | 1.66 | 1.99 | 1.33 | 7.97 | 0.00 | 42.52 |
| (2) | .73 | .14 | .09 | .09 | .18 | .41 | .91 | .59 | .37 | .14 | .23 | .18 | .23 | .27 | .18 | 1.10 | 0.00 | 5.84 |
| 8-12 | 10 | 0 | 1 | 1 | 0 | 2 | 11 | 12 | 5 | 2 | 3 | 0 | 5 | 4 | 2 | 17 | 0 | 75 |
| (1) | 3.32 | 0.00 | .33 | .33 | 0.00 | .66 | 3.65 | 3.99 | 1.66 | .66 | 1.00 | 0.00 | 1.66 | 1.33 | .66 | 5.65 | 0.00 | 24.92 |
| (2) | .46 | 0.00 | .05 | .05 | 0.00 | .09 | .50 | .55 | .23 | .09 | .14 | 0.00 | .23 | .18 | .09 | .78 | 0.00 | 3.42 |
| 13-18 | 1 | 0 | 0 | 0 | 0 | 0 | 1 | 0 | 0 | 0 | 0 | 0 | 0 | 3 | 0 | 4 | 0 | 9 |
| (1) | .33 | 0.00 | 0.00 | 0.00 | 0.00 | 0.00 | .33 | 0.00 | 0.00 | 0.00 | 0.00 | 0.00 | 0.00 | 1.00 | 0.00 | 1.33 | 0.00 | 2.99 |
| (2) | .05 | 0.00 | 0.00 | 0.00 | 0.00 | 0.00 | .05 | 0.00 | 0.00 | 0.00 | 0.00 | 0.00 | 0.00 | .14 | 0.00 | .18 | 0.00 | .41 |
| 19-24 | 0 | 0 | 0 | 0 | 0 | 0 | 0 | 0 | 0 | 0 | 0 | 0 | 0 | 0 | 0 | 0 | 0 | 0 |
| (1) | 0.00 | 0.00 | 0.00 | 0.00 | 0.00 | 0.00 | 0.00 | 0.00 | 0.00 | 0.00 | 0.00 | 0.00 | 0.00 | 0.00 | 0.00 | 0.00 | 0.00 | 0.00 |
| (2) | 0.00 | 0.00 | 0.00 | 0.00 | 0.00 | 0.00 | 0.00 | 0.00 | 0.00 | 0.00 | 0.00 | 0.00 | 0.00 | 0.00 | 0.00 | 0.00 | 0.00 | 0.00 |
| GT 24 | 0 | 0 | 0 | 0 | 0 | 0 | 0 | 0 | 0 | 0 | 0 | 0 | 0 | 0 | 0 | 0 | 0 | 0 |
| (1) | 0.00 | 0.00 | 0.00 | 0.00 | 0.00 | 0.00 | 0.00 | 0.00 | 0.00 | 0.00 | 0.00 | 0.00 | 0.00 | 0.00 | 0.00 | 0.00 | 0.00 | 0.00 |
| (2) | 0.00 | 0.00 | 0.00 | 0.00 | 0.00 | 0.00 | 0.00 | 0.00 | 0.00 | 0.00 | 0.00 | 0.00 | 0.00 | 0.00 | 0.00 | 0.00 | 0.00 | 0.00 |
| ALL SPEEDS | 34 | 10 | 12 | 6 | 10 | 15 | 44 | 34 | 19 | 7 | 8 | 6 | 13 | 15 | 12 | 56 | 0 | 301 |
| (1) | 11.30 | 3.32 | 3.99 | 1.99 | 3.32 | 4.98 | 14.62 | 11.30 | 6.31 | 2.33 | 2.66 | 1.99 | 4.32 | 4.98 | 3.99 | 18.60 | 0.00 | 100.00 |
| (2) | 1.55 | .46 | .55 | .27 | .46 | .68 | 2.01 | 1.55 | .87 | .32 | .37 | .27 | .59 | .68 | .55 | 2.56 | 0.00 | 13.74 |

(1)=PERCENT OF ALL GOOD OBSERVATIONS FOR THIS PAGE

(2)=PERCENT OF ALL GOOD OBSERVATIONS FOR THIS PERIOD

C= CALM (WIND SPEED LESS THAN OR EQUAL TO .60 MPH)

TABLE 5G

VERMONT YANKEE OCT-DEC 1984 JOINT FREQUENCY DISTRIBUTION (UPPER LEVEL)

297.0 FT WIND DATA

STABILITY CLASS G

CLASS FREQUENCY (PERCENT) = 2.92

WIND DIRECTION FROM

| SPEED(MPH) | N | NNE | NE | ENE | E | ESE | SE | SSE | S | SSW | SW | WSW | W | WNW | NW | NNW | VRBL | TOTAL |
|------------|------|------|------|------|------|------|-------|-------|------|------|------|------|------|-------|------|-------|------|--------|
| CALM | 0 | 0 | 0 | 0 | 0 | 0 | 0 | 0 | 0 | 0 | 0 | 0 | 0 | 0 | 0 | 0 | 0 | 0 |
| (1) | 0.00 | 0.00 | 0.00 | 0.00 | 0.00 | 0.00 | 0.00 | 0.00 | 0.00 | 0.00 | 0.00 | 0.00 | 0.00 | 0.00 | 0.00 | 0.00 | 0.00 | 0.00 |
| (2) | 0.00 | 0.00 | 0.00 | 0.00 | 0.00 | 0.00 | 0.00 | 0.00 | 0.00 | 0.00 | 0.00 | 0.00 | 0.00 | 0.00 | 0.00 | 0.00 | 0.00 | 0.00 |
| C-3 | 2 | 2 | 0 | 0 | 2 | 1 | 1 | 1 | 0 | 0 | 0 | 0 | 1 | 1 | 0 | 1 | 0 | 12 |
| (1) | 3.13 | 3.13 | 0.00 | 0.00 | 3.13 | 1.56 | 1.56 | 1.56 | 0.00 | 0.00 | 0.00 | 0.00 | 1.56 | 1.56 | 0.00 | 1.56 | 0.00 | 18.75 |
| (2) | .09 | .09 | 0.00 | 0.00 | .09 | .05 | .05 | .05 | 0.00 | 0.00 | 0.00 | 0.00 | .05 | .05 | 0.00 | .05 | 0.00 | .55 |
| 4-7 | 1 | 0 | 0 | 1 | 1 | 2 | 4 | 6 | 4 | 2 | 1 | 1 | 0 | 3 | 0 | 4 | 0 | 30 |
| (1) | 1.56 | 0.00 | 0.00 | 1.56 | 1.56 | 3.13 | 6.25 | 9.38 | 6.25 | 3.13 | 1.56 | 1.56 | 0.00 | 4.69 | 0.00 | 6.25 | 0.00 | 46.88 |
| (2) | .05 | 0.00 | 0.00 | .05 | .05 | .09 | .18 | .27 | .18 | .09 | .05 | .05 | 0.00 | .14 | 0.00 | .18 | 0.00 | 1.37 |
| 8-12 | 1 | 0 | 0 | 0 | 0 | 1 | 3 | 2 | 2 | 0 | 0 | 0 | 1 | 5 | 1 | 6 | 0 | 22 |
| (1) | 1.56 | 0.00 | 0.00 | 0.00 | 0.00 | 1.56 | 4.69 | 3.13 | 3.13 | 0.00 | 0.00 | 0.00 | 1.56 | 7.81 | 1.56 | 9.38 | 0.00 | 34.38 |
| (2) | .05 | 0.00 | 0.00 | 0.00 | 0.00 | .05 | .14 | .09 | .09 | 0.00 | 0.00 | 0.00 | .05 | .23 | .05 | .27 | 0.00 | 1.00 |
| 13-18 | 0 | 0 | 0 | 0 | 0 | 0 | 0 | 0 | 0 | 0 | 0 | 0 | 0 | 0 | 0 | 0 | 0 | 0 |
| (1) | 0.00 | 0.00 | 0.00 | 0.00 | 0.00 | 0.00 | 0.00 | 0.00 | 0.00 | 0.00 | 0.00 | 0.00 | 0.00 | 0.00 | 0.00 | 0.00 | 0.00 | 0.00 |
| (2) | 0.00 | 0.00 | 0.00 | 0.00 | 0.00 | 0.00 | 0.00 | 0.00 | 0.00 | 0.00 | 0.00 | 0.00 | 0.00 | 0.00 | 0.00 | 0.00 | 0.00 | 0.00 |
| 19-24 | 0 | 0 | 0 | 0 | 0 | 0 | 0 | 0 | 0 | 0 | 0 | 0 | 0 | 0 | 0 | 0 | 0 | 0 |
| (1) | 0.00 | 0.00 | 0.00 | 0.00 | 0.00 | 0.00 | 0.00 | 0.00 | 0.00 | 0.00 | 0.00 | 0.00 | 0.00 | 0.00 | 0.00 | 0.00 | 0.00 | 0.00 |
| (2) | 0.00 | 0.00 | 0.00 | 0.00 | 0.00 | 0.00 | 0.00 | 0.00 | 0.00 | 0.00 | 0.00 | 0.00 | 0.00 | 0.00 | 0.00 | 0.00 | 0.00 | 0.00 |
| GT 24 | 0 | 0 | 0 | 0 | 0 | 0 | 0 | 0 | 0 | 0 | 0 | 0 | 0 | 0 | 0 | 0 | 0 | 0 |
| (1) | 0.00 | 0.00 | 0.00 | 0.00 | 0.00 | 0.00 | 0.00 | 0.00 | 0.00 | 0.00 | 0.00 | 0.00 | 0.00 | 0.00 | 0.00 | 0.00 | 0.00 | 0.00 |
| (2) | 0.00 | 0.00 | 0.00 | 0.00 | 0.00 | 0.00 | 0.00 | 0.00 | 0.00 | 0.00 | 0.00 | 0.00 | 0.00 | 0.00 | 0.00 | 0.00 | 0.00 | 0.00 |
| ALL SPEEDS | 4 | 2 | 0 | 1 | 3 | 4 | 8 | 9 | 6 | 2 | 1 | 1 | 2 | 9 | 1 | 11 | 0 | 64 |
| (1) | 6.25 | 3.13 | 0.00 | 1.56 | 4.69 | 6.25 | 12.50 | 14.06 | 9.38 | 3.13 | 1.56 | 1.56 | 3.13 | 14.06 | 1.56 | 17.19 | 0.00 | 100.00 |
| (2) | .18 | .09 | 0.00 | .05 | .14 | .18 | .37 | .41 | .27 | .09 | .05 | .05 | .09 | .41 | .05 | .50 | 0.00 | 2.92 |

(1)=PERCENT OF ALL GOOD OBSERVATIONS FOR THIS PAGE

(2)=PERCENT OF ALL GOOD OBSERVATIONS FOR THIS PERIOD

C= CALM (WIND SPEED LESS THAN OR EQUAL TO .60 MPH)

TABLE 5H

VERMONT YANKEE OCT-DEC 1984 JOINT FREQUENCY DISTRIBUTION (UPPER LEVEL)

297.0 FT WIND DATA

STABILITY CLASS ALL

CLASS FREQUENCY (PERCENT) = 100.00

WIND DIRECTION FROM

| SPEED(MPH) | N | NNE | NE | ENE | E | ESE | SE | SSE | S | SSW | SW | WSW | W | WNW | NW | NNW | VRBL | TOTAL |
|------------|-------|------|------|------|------|------|------|------|------|------|------|------|------|------|------|-------|------|--------|
| CALM | 0 | 0 | 0 | 0 | 0 | 0 | 0 | 0 | 0 | 0 | 0 | 0 | 0 | 0 | 0 | 0 | 0 | 0 |
| (1) | 0.00 | 0.00 | 0.00 | 0.00 | 0.00 | 0.00 | 0.00 | 0.00 | 0.00 | 0.00 | 0.00 | 0.00 | 0.00 | 0.00 | 0.00 | 0.00 | 0.00 | 0.00 |
| (2) | 0.00 | 0.00 | 0.00 | 0.00 | 0.00 | 0.00 | 0.00 | 0.00 | 0.00 | 0.00 | 0.00 | 0.00 | 0.00 | 0.00 | 0.00 | 0.00 | 0.00 | 0.00 |
| C-3 | 54 | 28 | 24 | 21 | 32 | 26 | 36 | 35 | 26 | 10 | 7 | 6 | 14 | 15 | 39 | 60 | 0 | 433 |
| (1) | 2.47 | 1.28 | 1.10 | .96 | 1.46 | 1.19 | 1.64 | 1.60 | 1.19 | .46 | .32 | .27 | .64 | .68 | 1.78 | 2.74 | 0.00 | 19.77 |
| (2) | 2.47 | 1.28 | 1.10 | .96 | 1.46 | 1.19 | 1.64 | 1.60 | 1.19 | .46 | .32 | .27 | .64 | .68 | 1.78 | 2.74 | 0.00 | 19.77 |
| 4-7 | 102 | 13 | 9 | 9 | 16 | 21 | 97 | 86 | 57 | 18 | 15 | 11 | 10 | 20 | 39 | 156 | 0 | 679 |
| (1) | 4.66 | .59 | .41 | .41 | .73 | .96 | 4.43 | 3.93 | 2.60 | .82 | .68 | .50 | .46 | .91 | 1.78 | 7.12 | 0.00 | 31.00 |
| (2) | 4.66 | .59 | .41 | .41 | .73 | .96 | 4.43 | 3.93 | 2.60 | .82 | .68 | .50 | .46 | .91 | 1.78 | 7.12 | 0.00 | 31.00 |
| 8-12 | 73 | 14 | 2 | 3 | 4 | 6 | 34 | 73 | 87 | 21 | 10 | 7 | 37 | 65 | 38 | 141 | 0 | 615 |
| (1) | 3.33 | .64 | .09 | .14 | .18 | .27 | 1.55 | 3.33 | 3.97 | .96 | .46 | .32 | 1.69 | 2.97 | 1.74 | 6.44 | 0.00 | 28.08 |
| (2) | 3.33 | .64 | .09 | .14 | .18 | .27 | 1.55 | 3.33 | 3.97 | .96 | .46 | .32 | 1.69 | 2.97 | 1.74 | 6.44 | 0.00 | 28.08 |
| 13-18 | 53 | 7 | 0 | 0 | 0 | 0 | 1 | 7 | 38 | 5 | 3 | 0 | 22 | 84 | 48 | 88 | 0 | 356 |
| (1) | 2.42 | .32 | 0.00 | 0.00 | 0.00 | 0.00 | .05 | .32 | 1.74 | .23 | .14 | 0.00 | 1.00 | 3.84 | 2.19 | 4.02 | 0.00 | 16.26 |
| (2) | 2.42 | .32 | 0.00 | 0.00 | 0.00 | 0.00 | .05 | .32 | 1.74 | .23 | .14 | 0.00 | 1.00 | 3.84 | 2.19 | 4.02 | 0.00 | 16.26 |
| 19-24 | 7 | 0 | 0 | 0 | 0 | 0 | 0 | 0 | 1 | 1 | 0 | 0 | 2 | 23 | 14 | 38 | 0 | 86 |
| (1) | .32 | 0.00 | 0.00 | 0.00 | 0.00 | 0.00 | 0.00 | 0.00 | .05 | .05 | 0.00 | 0.00 | .09 | 1.05 | .64 | 1.74 | 0.00 | 3.93 |
| (2) | .32 | 0.00 | 0.00 | 0.00 | 0.00 | 0.00 | 0.00 | 0.00 | .05 | .05 | 0.00 | 0.00 | .09 | 1.05 | .64 | 1.74 | 0.00 | 3.93 |
| GT 24 | 3 | 0 | 0 | 0 | 0 | 0 | 0 | 0 | 0 | 0 | 0 | 0 | 0 | 4 | 4 | 10 | 0 | 21 |
| (1) | .14 | 0.00 | 0.00 | 0.00 | 0.00 | 0.00 | 0.00 | 0.00 | 0.00 | 0.00 | 0.00 | 0.00 | 0.00 | .18 | .18 | .46 | 0.00 | .96 |
| (2) | .14 | 0.00 | 0.00 | 0.00 | 0.00 | 0.00 | 0.00 | 0.00 | 0.00 | 0.00 | 0.00 | 0.00 | 0.00 | .18 | .18 | .46 | 0.00 | .96 |
| ALL SPEEDS | 292 | 62 | 35 | 33 | 52 | 53 | 168 | 201 | 209 | 55 | 35 | 24 | 85 | 211 | 182 | 493 | 0 | 2190 |
| (1) | 12.33 | 2.83 | 1.60 | 1.51 | 2.37 | 2.42 | 7.67 | 9.18 | 9.54 | 2.51 | 1.60 | 1.10 | 3.88 | 9.63 | 8.31 | 22.51 | 0.00 | 100.00 |
| (2) | 13.33 | 2.83 | 1.60 | 1.51 | 2.37 | 2.42 | 7.67 | 9.18 | 9.54 | 2.51 | 1.60 | 1.10 | 3.88 | 9.63 | 8.31 | 22.51 | 0.00 | 100.00 |

(1)=PERCENT OF ALL GOOD OBSERVATIONS FOR THIS PAGE

(2)=PERCENT OF ALL GOOD OBSERVATIONS FOR THIS PERIOD

C= CALM (WIND SPEED LESS THAN OR EQUAL TO .60 MPH)

TABLE 6
VERMONT YANKEE
QUARTERLY AVERAGE X/Q, D/Q AND GAMMA X/Q
VALUES FOR SELECTED RECEPTORS

| POINT OF INTEREST | | THIRD QUARTER | FOURTH QUARTER |
|---|--------------------|---------------|---------------------------|
| A. Maximum off-site ground level air concentration location | Location: | NW 2900 | Location: NW 2900 meters |
| | X/Q (undepleted)*: | 6.8E-07 | X/Q (undepleted): 6.3E-07 |
| | X/Q (depleted)*: | 6.8E-07 | X/Q (depleted): 6.3E-07 |
| | D/Q**: | 1.8E-09 | D/Q: 1.7E-09 |
| | Gamma X/Q:* | 3.1E-07 | Gamma X/Q: 2.6E-07 |
| B. For whole body and skin doses from noble gases | | | |
| 1) Maximum site boundary location | Location: | S 400 meters | Location: S 400 meters |
| | X/Q (undepleted): | 8.9E-09 | X/Q (undepleted): 4.4E-10 |
| | X/Q (depleted): | 8.9E-09 | X/Q (depleted): 4.4E-10 |
| | D/Q: | 2.9E-11 | D/Q: 3.8E-12 |
| | Gamma X/Q: | 1.0E-06 | Gamma X/Q: 7.8E-07 |
| 2) Maximum nearest residence | Location | S 550 meters | Location: S 550 meters |
| | X/Q (undepleted): | 1.9E-08 | X/Q (undepleted): 2.3E-09 |
| | X/Q (depleted): | 1.9E-08 | X/Q (depleted): 2.3E-09 |
| | D/Q: | 7.3E-11 | D/Q: 1.7E-11 |
| | Gamma X/Q: | 7.6E-07 | Gamma X/Q: 5.7E-07 |

TABLE 6 (continued)

| POINT OF INTEREST | | THIRD QUARTER | FOURTH QUARTER |
|--|-----------------------------|-----------------------------|----------------|
| C. For organ doses from iodine and particulates in gaseous effluents | | | |
| 1) Maximum farm location | Location: WNW 3000 meters | Location: SSE 5600 meters | |
| | X/Q (undepleted): $4.6E-07$ | X/Q (undepleted): $2.9E-07$ | |
| | X/Q (depleted): $4.5E-07$ | X/Q (depleted): $2.8E-07$ | |
| | D/Q: $9.1E-10$ | D/Q: $1.2E-09$ | |
| | Gamma X/Q: $2.1E-07$ | Gamma X/Q: $1.9E-07$ | |
| 2) Maximum nearest residence | Location: SSE 2100 meters | Location: SSE 2100 meters | |
| | X/Q (undepleted): $6.8E-08$ | X/Q (undepleted): $8.3E-08$ | |
| | X/Q (depleted): $6.8E-08$ | X/Q (depleted): $8.3E-08$ | |
| | D/Q: $3.7E-10$ | D/Q: $5.6E-10$ | |
| | Gamma X/Q: $2.2E-07$ | Gamma X/Q: $2.8E-07$ | |
| 3) Maximum site boundary location | Location: SSE 850 meters | Location: SSE 850 meters | |
| | X/Q (undepleted): $4.5E-08$ | X/Q (undepleted): $2.0E-08$ | |
| | X/Q (depleted): $4.5E-08$ | X/Q (depleted): $2.0E-08$ | |
| | D/Q: $2.8E-10$ | D/Q: $1.8E-10$ | |
| | Gamma X/Q: $4.4E-07$ | Gamma X/Q: $5.4E-07$ | |

* Depleted and undepleted X/Qs and Gamma X/Q are in units of sec/m^3

** Delta (D/Q) in units of $1/\text{m}^2$

TABLE 7
SUMMARY OF RADIOLOGICAL IMPACT ON MAN
Vermont Yankee Nuclear Power Station
Third and Fourth Quarters, 1983

| POTENTIAL PATHWAY OR TYPE OF EXPOSURE | ESTIMATED THIRD QUARTER DOSE COMMITMENT | ESTIMATED FOURTH QUARTER DOSE COMMITMENT |
|--|---|--|
| I. Maximum individual whole body and critical organ doses from receiving-water exposure pathways from liquid releases (mrem). | No liquid releases | No liquid releases |
| II. | | |
| A. Whole body and skin doses to individuals exposed at point of maximum off-site ground level air concentration of radioactive noble gaseous effluents | (at NW, 2900 meters) | (at NW, 2900 meters) |
| i. Skin (mrem) | 5.4E-02 | 9.6E-02 |
| ii. Whole body (mrem) | 2.0E-02 | 3.5E-02 |
| B. Whole body and skin doses at maximum site boundary location from radioactive noble gaseous effluents | (at S, 400 meters) | (at S, 400 meters) |
| i. Skin (mrem) | 7.8E-02 | 1.2E-01 |
| ii. Whole body (mrem) | 6.6E-02 | 1.1E-01 |
| C. Whole body and skin doses at maximum nearest residence from radioactive noble gaseous effluents. | (at S, 550 meters) | (at S, 550 meters) |
| i. Skin (mrem) | 5.8E-02 | 8.9E-02 |
| ii. Whole body (mrem) | 4.9E-02 | 7.7E-02 |

TABLE 7 (continued)

| POTENTIAL PATHWAY OR TYPE OF EXPOSURE | ESTIMATED THIRD QUARTER DOSE COMMITMENT | ESTIMATED FOURTH QUARTER DOSE COMMITMENT |
|---|---|--|
| III. Organ doses to individuals from radioactive iodine and particulates in gaseous effluents (including tritium). | | |
| A. Maximum farm location | | |
| Maximum individual whole body and organ doses from all pathways | (at WNW, 3000 meters) | (at SSE, 5600 meters) |
| i. Bone (mrem) | 4.1E-04 (infant) | 4.2E-04 (child) |
| ii. Thyroid (mrem) | 3.0E-02 (infant) | 4.6E-04 (child) |
| iii. GI(LLI) (mrem) | 5.8E-04 (child) | 4.9E-04 (child) |
| iv. Whole body (mrem) | 5.9E-04 (child) | 4.9E-04 (child) |
| v. Liver (mrem) | 6.5E-04 (child) | 5.2E-04 (child) |
| B. Critical organ doses to maximum nearest resident from the inhalation, ingestion and ground plane exposure of iodine and particulates | (at SSE, 2100 meters) | (at SSE, 2100 meters) |
| i. Bone (mrem) | 1.4E-04 (child) | 2.0E-04 (child) |
| ii. Thyroid (mrem) | 9.8E-04 (child) | 2.0E-04 (child) |
| iii. GI(LLI) (mrem) | 1.6E-04 (child) | 2.1E-04 (teen) |
| iv. Whole body as critical organ (mrem) | 1.6E-04 (child) | 2.0E-04 (child) |
| v. Liver (mrem) | 1.6E-04 (child) | 2.1E-04 (child) |

TABLE 7 (continued)

| POTENTIAL PATHWAY OR TYPE OF EXPOSURE | ESTIMATED THIRD QUARTER DOSE COMMITMENT | ESTIMATED FOURTH QUARTER DOSE COMMITMENT |
|--|---|--|
| C. Organ doses to individuals at point of maximum ground level air concentration of gaseous effluents from inhalation and ground exposure of iodine and particulates | (at NW, 2900 meters) | (at NW, 2900 meters) |
| i. Bone (mrem) | 5.8E-04 (child) | 5.2E-04 (all) |
| ii. Thyroid (mrem) | 1.6E-03 (child) | 5.9E-04 (child) |
| iii. GI(LLI) (mrem) | 6.5E-04 (adult,teen) | 5.7E-04 (adult,teen) |
| iv. Whole body as critical organ (mrem) | 6.5E-04 (teen) | 5.7E-04 (adult,teen) |
| v. Skin (mrem) | 6.9E-04 (all) | 6.1E-04 (all) |
| D. Organ doses to individuals at point of maximum site boundary air concentration of gaseous effluents from inhalation and ground exposure of iodine and particulates | (at SSE, 850 meters) | (at SSE, 850 meters) |
| i. Bone (mrem) | 8.8E-05 (all) | 5.3E-05 (all) |
| ii. Thyroid (mrem) | 1.5E-04 (child) | 5.5E-05 (teen,child) |
| iii. GI(LLI) (mrem) | 9.2E-05 (adult,teen) | 5.4E-05 (adult,teen) |
| iv. Whole body as critical organ (mrem) | 9.3E-05 (teen) | 5.4E-05 (adult,teen) |
| v. Skin (mrem) | 1.0E-04 (all) | 6.2E-05 (all) |

TABLE 7 (continued)

| POTENTIAL PATHWAY OR TYPE OF EXPOSURE | ESTIMATED THIRD QUARTER DOSE COMMITMENT | ESTIMATED FOURTH QUARTER DOSE COMMITMENT |
|---|---|--|
| IV. Whole body doses to individuals and populations in unrestricted areas from <u>direct</u> radiation from the facility. | | |
| A. Maximum site boundary (mrem) (west of turbine building) | 1.2E+00 | 3.6E+00 |
| B. Population dose (person-rem) | 7.6E-03 | 2.4E-02 |
| V. Whole body dose to the population from all receiving-water related pathways from liquid releases. (person-rem). | No liquid releases | No liquid releases |

TABLE 7 (continued)

| POTENTIAL PATHWAY OR TYPE OF EXPOSURE | ESTIMATED THIRD QUARTER DOSE COMMITMENT | ESTIMATED FOURTH QUARTER DOSE COMMITMENT |
|---|---|--|
| VI. | | |
| A. Whole body doses to the population and average individual out to 50 miles from noble gaseous effluents | | |
| i. Whole body dose to population (person-rem) | 5.2E-01 | 9.5E-01 |
| ii. Average individual whole body dose (mrem) | 3.4E-04 | 6.1E-04 |
| iii. Skin dose to population (person-rem) | 1.3E+00 | 2.4E+00 |
| iv. Average individual skin dose (mrem) | 8.6E-04 | 1.5E-03 |
| B. Organ doses to 50 mile population, and average individual, from inhalation, ingestion of milk, meat, and vegetables, and ground exposure to iodine and particulates in gaseous effluents | | |
| i. Thyroid population dose (person-rem) | 8.5E-02 | 8.9E-03 |
| ii. Average individual thyroid dose (mrem) | 5.5E-05 | 5.8E-06 |
| iii. Whole body population dose (person-rem) | 9.6E-03 | 8.7E-03 |
| iv. Average individual whole body dose (mrem) | 6.2E-06 | 5.6E-06 |

APPENDIX A

EFFLUENT AND WASTE DISPOSAL SEMI-ANNUAL REPORT

Supplemental Information

July - December 1984

Facility: Vermont Yankee Nuclear Power Station

Licensee: Vermont Yankee Nuclear Power Corporation

1. Regulatory Limits

- a. Fission and activation gases: $0.08/\bar{E}_\gamma$ Ci/sec
- b. Iodines: $0.48 \mu\text{Ci/sec}$
- c. Particulates, half-lives > 8 days: $1.6\text{E}+3 \text{ MPC}_a$ Ci/sec
- d. Liquid effluents: $1.0\text{E}-07 \mu\text{Ci/ml}$
(HTO: $3.0\text{E}-03 \mu\text{Ci/ml}$, dissolved noble gases:
 $4.0\text{E}-05 \mu\text{Ci/ml}$) Isotopic limits are found in
10CFR20, App. B, Table II, Column 2.

2. Maximum Permissible Concentrations

Provided below are the MPC's used in determining allowable release rates or concentrations.

- a. Fission and activation gases: No MPC limits
- b. Iodines: No MPC limits
- c. Particulates, half-lives > 8 days: See 10CFR20, App. B, Table II, Column 1.
- d. Liquid effluents: See 10CFR20, App. B, Table II, Column 2.

3. Average Energy

Provided below are the average energy (\bar{E}) of the radionuclide mixture in releases of fission and activation gases, if applicable.

- a. Average gamma energy: 3rd Quarter 4.99E-1 Mev/dis
4th Quarter 1.10E+00 Mev/dis
- b. Average beta energy: Not Applicable

4. Measurements and Approximations of Total Radioactivity

Provided below are the methods used to measure or approximate the total radioactivity in effluents and the methods used to determine radionuclide composition.

a. Fission and Activation Gases

Daily samples are drawn at the discharge of the air ejector. Isotopic breakdown of the releases are determined from these samples. A logarithmic chart of the stack gas monitor is read daily to determine the gross release rate. At the very low release rates normally encountered during operation with the augmented off-gas system the error of release rates may be approximately ± 100 .

b. Iodines

Continuous isokinetic samples are drawn from the plant stack through a particulate filter and charcoal cartridge. The filters and cartridge are removed weekly (if releases are less than 4 of the Tech Spec limit), or daily (if they are greater than 4 of the limit), and are analyzed for radioiodine 131, 132, 133, 134, and 135. The iodines found on the filter are added to those on the charcoal cartridge. The error involved in these steps may be approximately ± 50 .

c. Particulates

The particulate filters described in b. above are also counted for particulate radioactivity. The error involved in this sample is also approximately ± 50 .

d. Liquid Effluents

Radioactive liquid effluents released from the facility are continuously monitored. Measurements are also made on a representative sample of each batch of radioactive liquid effluents released. For each batch, station records are retained of the total activity (mCi) released, concentration ($\mu\text{Ci/ml}$) of gross radioactivity, volume (liters), and approximate total quantity of water (liters) used to dilute the liquid effluent prior to release to the Connecticut River.

Each batch of radioactive liquid effluent released is analyzed for gross gamma and gamma isotopic radioactivity. A monthly proportional composite sample, comprising an aliquot of each batch released during a month, is also analyzed for tritium, SR-89, SR-90, gross beta and gross alpha radioactivity, in addition to gamma spectroscopy.

There were no liquid releases during the reporting period.

5. Batch Releases

a. Liquid

There were no routine liquid batch releases during the reporting period.

b. Gaseous

There were no routine gaseous batch releases during the reporting period.

6. Abnormal Releases

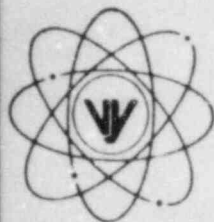
a. Liquid

There were no non-routine liquid releases during the reporting period.

b. Gaseous

There were no non-routine gaseous releases during the reporting period

VERMONT YANKEE NUCLEAR POWER CORPORATION



RD 5, Box 169, Ferry Road, Brattleboro, VT 05301

REPLY TO:
ENGINEERING OFFICE

1671 WORCESTER ROAD
FRAMINGHAM, MASSACHUSETTS 01701
TELEPHONE 617-872-8100

March 1, 1985

FVY 85-24

United States Nuclear Regulatory Commission
Region I
631 Park Avenue
King of Prussia, PA 19406

Attention: Dr. Thomas E. Murley
Regional Administrator

References: (a) License No. DPR-28 (Docket No. 50-271)

Subject: Vermont Yankee Semi-Annual Effluent Release Report

Dear Sir:

Enclosed herewith please find two copies of the Vermont Yankee Nuclear Power Corporation Semi-Annual Effluent Release Report. This report covers the period beginning July 1, 1984, and ending December 31, 1984, and is submitted in accordance with our Technical Specifications 6.7.c.1.

We trust that the enclosed information is satisfactory; however, should you have any questions, please contact us.

Very truly yours,

VERMONT YANKEE NUCLEAR POWER CORPORATION

R. W. Capstick
Licensing Engineer

RWC/mep

Enclosures

cc: United States Nuclear Regulatory Commission
Office of Inspection and Enforcement
Washington, DC 20555
Attention: Document Control Desk

1E25