

LICENSEE EVENT REPORT (LER)

FACILITY NAME (1) CRYSTAL RIVER UNIT 3										DOCKET NUMBER (2) 0 5 0 0 0 3 0 2					PAGE (3) 1 OF 0 2					
TITLE (4) Failure to Verify Operability of Cable Tunnel Sump Pump																				
EVENT DATE (5)			LER NUMBER (6)				REPORT DATE (7)			OTHER FACILITIES INVOLVED (8)										
MONTH	DAY	YEAR	YEAR	SEQUENTIAL NUMBER	REVISION NUMBER	MONTH	DAY	YEAR	FACILITY NAMES				DOCKET NUMBER(S)							
1	0	1	0	8	4	8	4	0	1	9	0	0	1	1	0	9	8	4	N/A	0 5 0 0 0
OPERATING MODE (9)		THIS REPORT IS SUBMITTED PURSUANT TO THE REQUIREMENTS OF 10 CFR 5: (Check one or more of the following) (11)																		
1		20.402(b)				20.405(e)				50.73(a)(2)(iv)				73.71(b)						
POWER LEVEL (10)		20.405(a)(1)(i)				50.36(a)(1)				50.73(a)(2)(v)				73.71(a)						
0 9 13		20.405(a)(1)(ii)				50.36(a)(2)				50.73(a)(2)(vi)				OTHER (Specify in Abstract below and in Text, NRC Form 366A)						
		20.405(a)(1)(iii)				50.73(a)(2)(i)				50.73(a)(2)(vii)(A)										
		20.405(a)(1)(iv)				50.73(a)(2)(ii)				50.73(a)(2)(vii)(B)										
		20.405(a)(1)(v)				50.73(a)(2)(iii)				50.73(a)(2)(x)										
LICENSEE CONTACT FOR THIS LER (12)																				
NAME W. K. Bandhauer, Nuclear Safety Supervisor										TELEPHONE NUMBER AREA CODE 9 0 4 7 9 5 - 6 4 8 6										
COMPLETE ONE LINE FOR EACH COMPONENT FAILURE DESCRIBED IN THIS REPORT (13)																				
CAUSE	SYSTEM	COMPONENT	MANUFACTURER	REPORTABLE TO NPROS		CAUSE	SYSTEM	COMPONENT	MANUFACTURER	REPORTABLE TO NPROS										
SUPPLEMENTAL REPORT EXPECTED (14)												EXPECTED SUBMISSION DATE (15)		MONTH	DAY	YEAR				
YES (If yes, complete EXPECTED SUBMISSION DATE)												X NO								

ABSTRACT (Limit to 1400 spaces, i.e., approximately fifteen single-space typewritten lines) (16)

On October 10, 1984, the 'A' Emergency Diesel Generator was out of service for maintenance. In accordance with Technical Specification 3.8.1.1 action 'a', the surveillance requirement 4.8.1.1.1.a.2 must be performed at least once every eight hours. Surveillance 4.8.1.1.1.a.2 states that to assure operability of the 230 kV supply to CR-3, the sump pumps in the tunnel containing the DC control feeds to the 230 kV switchgear shall be verified operable. Due to operator error, this was not performed for a period of nine hours and forty three minutes between 1950 October 10, 1984 and 0533 October 11, 1984.

Procedure modifications will be made to prevent this from recurring. Also, a revision to Technical Specifications has been submitted to delete these pumps from Technical Specifications, as the cables in the tunnel are capable of operating totally submerged.

8411190581 841109
PDR ADOCK 05000302
S PDR

JE22
11

LICENSEE EVENT REPORT (LER) TEXT CONTINUATION

APPROVED OMR NO. 3150-0104

EXPIRES: 8/31/85

FACILITY NAME (1) CRYSTAL RIVER UNIT 3	DOCKET NUMBER (2) 0 5 0 0 0 3 0 2 8 4	LER NUMBER (6)			PAGE (3) 0 2 OF 0 2	
		YEAR	SEQUENTIAL NUMBER	REVISION NUMBER		
		— 0 1 9	— 0 0	0 2		

TEXT (If more space is required, use additional NRC Form 366A's) (17)

EVENT ASSESSMENT

On October 10, 1984, Crystal River Unit 3 was operating at 93% reactor (AC) power (827 MWe). The 'A' Emergency Diesel Generator (EK, DG) was out of service for maintenance.

With one Emergency Diesel Generator out of service, Technical Specifications require that the sump pumps (WK, P) in the tunnel containing the DC control power cables (EJ, CBL) to the 230 kV switchyard be verified operable at least once every eight hours. This is accomplished by performance of SP-322, Cable Tunnel Sump Pumps Operability Verification. The performance of that surveillance procedure (SP) was not accomplished for a period of nine hours and forty three minutes between 1950 October 10, 1984 and 0533 October 11, 1984.

The licensed operators were and are fully aware of the requirements, but failed to have the surveillance performed within the required time frame. With the exception of SP-322, all of the required actions are performed by the Unit 3 reactor operators. SP-322 is performed by Units 1 and 2 personnel. The Shift Supervisor did not assure that the reactor operator was notifying Units 1 and 2. The operable condition of the sump pumps was determined satisfactorily after the operators realized that the surveillance was overdue.

SAFETY CONSIDERATIONS

The assurance of the sump pumps operability, though specified in Technical Specifications, is not vital to supplying DC control power to the 230 kV switchyard. All cabling in the tunnel is capable of operating totally submerged.

ASSESSMENT CONCLUSIONS

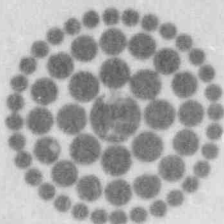
1. This event had no impact on plant safety.
2. The event cause was cognitive personnel error.
3. The operating shift personnel failed to communicate to determine who was responsible for notifying Units 1 and 2 to complete the eight hour cable tunnel sump pump operability verification.

CORRECTIVE ACTION

Procedure changes will be implemented to reduce reliance on memory and assure that notification is given that SP-322 is to be performed.

PREVIOUS SIMILAR EVENTS

This is the second instance of failure to perform the verification of sump pumps operability within the required time while performing Diesel Generator maintenance.



**Florida
Power**
CORPORATION

November 9, 1984
3F1184-09

Document Control Desk
U.S. Nuclear Regulatory Commission
Washington, DC 20555

Subject: Crystal River Unit 3
Docket No. 50-302
Operating License No. DPR-72
Licensee Event Report No. 84-019-00

Dear Sir:

Enclosed is Licensee Event Report (LER) No. 84-019-00 which is submitted in accordance with 10 CFR 50.73.

Should there be any questions, please contact this office.

Sincerely,

G. R. Westafer
Manager, Nuclear Operations
Licensing and Fuel Management

AEF/feb

Enclosure

cc: Mr. James P. O'Reilly
Regional Administrator, Region II
Office of Inspection & Enforcement
U.S. Nuclear Regulatory Commission
101 Marietta Street N.W., Suite 2900
Atlanta, GA 30323

IE22
1/1