

# OPERATING DATA REPORT

DOCKET NO. 50-302  
DATE 10/1/84  
COMPLETED BY D. Graham  
TELEPHONE (904) 795-3802

## OPERATING STATUS

1. Unit Name: Crystal River Unit 3
2. Reporting Period: 9/1/84 - 9/30/84
3. Licensed Thermal Power (MWt): 2544
4. Nameplate Rating (Gross MWe): 890
5. Design Electrical Rating (Net MWe): 825
6. Maximum Dependable Capacity (Gross MWe): 860
7. Maximum Dependable Capacity (Net MWe): 821
8. If Changes Occur in Capacity Ratings (Items Number 3 Through 7) Since Last Report, Give Reasons:  
NA

Notes

9. Power Level To Which Restricted, If Any (Net MWe): NA
10. Reasons For Restrictions, If Any: NA

	This Month	Yr.-to-Date	Cumulative
11. Hours In Reporting Period	<u>720</u>	<u>6575</u>	<u>66215</u>
12. Number Of Hours Reactor Was Critical	<u>720</u>	<u>6260</u>	<u>43829.2</u>
13. Reactor Reserve Shutdown Hours	<u>0</u>	<u>0</u>	<u>1280.3</u>
14. Hours Generator On-Line	<u>720</u>	<u>6218.3</u>	<u>42837.3</u>
15. Unit Reserve Shutdown Hours	<u>0</u>	<u>0</u>	<u>0</u>
16. Gross Thermal Energy Generated (MWH)	<u>1692039</u>	<u>14901736</u>	<u>96866071</u>
17. Gross Electrical Energy Generated (MWH)	<u>582111</u>	<u>5135795</u>	<u>33062531</u>
18. Net Electrical Energy Generated (MWH)	<u>554600</u>	<u>4895645</u>	<u>31412728</u>
19. Unit Service Factor	<u>100%</u>	<u>94.6%</u>	<u>64.7%</u>
20. Unit Availability Factor	<u>100%</u>	<u>94.6%</u>	<u>64.7%</u>
21. Unit Capacity Factor (Using MDC Net)	<u>93.8%</u>	<u>90.7%</u>	<u>59.8%</u>
22. Unit Capacity Factor (Using DER Net)	<u>93.4%</u>	<u>90.3%</u>	<u>57.5%</u>
23. Unit Forced Outage Rate	<u>0%</u>	<u>1.7%</u>	<u>21.0%</u>

24. Shutdowns Scheduled Over Next 6 Months (Type, Date, and Duration of Each):

Refueling outage scheduled to begin March 9, 1985, and last 20 weeks.

25. If Shut Down At End Of Report Period, Estimated Date of Startup: NA

26. Units In Test Status (Prior to Commercial Operation):

INITIAL CRITICALITY	<u>      </u>	<u>1/14/77</u>
INITIAL ELECTRICITY	<u>      </u>	<u>1/30/77</u>
COMMERCIAL OPERATION	<u>      </u>	<u>3/13/77</u>

8410160177 840930  
PDR ADOCK 05000302  
R PDR

(9/77)

IE24  
Y/

# AVERAGE DAILY UNIT POWER LEVEL

DOCKET NO. 50-302

UNIT FLCRP-3

DATE 10/1/84

COMPLETED BY D. Graham

TELEPHONE (904) 795-3802

MONTH 9/84

DAY AVERAGE DAILY POWER LEVEL  
(MWe-Net)

1	<u>785</u>
2	<u>789</u>
3	<u>810</u>
4	<u>765</u>
5	<u>795</u>
6	<u>784</u>
7	<u>814</u>
8	<u>809</u>
9	<u>766</u>
10	<u>798</u>
11	<u>788</u>
12	<u>791</u>
13	<u>802</u>
14	<u>781</u>
15	<u>780</u>
16	<u>776</u>

DAY AVERAGE DAILY POWER LEVEL  
(MWe-Net)

17	<u>688</u>
18	<u>590</u>
19	<u>590</u>
20	<u>740</u>
21	<u>799</u>
22	<u>784</u>
23	<u>795</u>
24	<u>789</u>
25	<u>794</u>
26	<u>787</u>
27	<u>812</u>
28	<u>776</u>
29	<u>752</u>
30	<u>783</u>
31	<u></u>

## INSTRUCTIONS

On this format, list the average daily unit power level in MWe-Net for each day in the reporting month. Compute to the nearest whole megawatt.

## UNIT SHUTDOWNS AND POWER REDUCTIONS

REPORT MONTH 9/84

DOCKET NO. 50-302  
 UNIT NAME FLCRP-3  
 DATE 10/1/84  
 COMPLETED BY S.A. Stewart  
 TELEPHONE (904) 795-3802

No.	Date	Type <sup>1</sup>	Duration (Hours)	Reason <sup>2</sup>	Method of Shutting Down Reactor <sup>3</sup>	Licensee Event Report #	System Code <sup>4</sup>	Component Code <sup>5</sup>	Cause & Corrective Action to Prevent Recurrence
84-29	09/17/84	F	0.0	A	5	N/A	HC	HTEXCH	Reduced power to locate and repair a condenser salt water leak. Also cleaned condenser waterboxes.

<sup>1</sup>  
 F- Forced  
 S- Scheduled

<sup>2</sup>  
 Reason:  
 A-Equipment Failure (Explain)  
 B-Maintenance or Test  
 C-Refueling  
 D-Regulatory Restriction  
 E-Operator Training & License Examination  
 F-Administrative  
 G-Operational Error (Explain)  
 H-Other (Explain)

<sup>3</sup>  
 Method:  
 1-Manual  
 2-Manual Scram.  
 3-Automatic Scram.  
 4-Other (Explain)

<sup>4</sup>  
 Exhibit G - Instructions  
 for Preparation of Data  
 Entry Sheets for Licensee  
 Event Report (LER) File (NUREG-  
 0161)

<sup>5</sup>  
 Exhibit I - Same Source

MONTHLY OPERATIONAL SUMMARY STATEMENT

DOCKET NO. 50-302

UNIT FLCRP-3

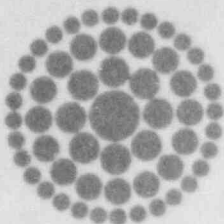
DATE 10/1/84

COMPLETED BY S.A. Stewart

TELEPHONE (904) 795-3802

MONTH September 1984

SUMMARY STATEMENT: Crystal River 3 operated with one power reduction for a condenser tube leak and no outages during September. Throughout the month the plant was limited to approximately 95% power due to high water levels in the Steam Generator caused by fouling.



**Florida  
Power**  
CORPORATION

October 4, 1984  
3F1084-07

Mr. Richard C. DeYoung, Director  
Office of Inspection and Enforcement  
U.S. Nuclear Regulatory Commission  
Attn: Document Control Desk  
Washington, DC 20555

Subject: Crystal River Unit 3  
Docket No. 50-302  
Operating License No. DPR-72  
Monthly Operating Report

Dear Sir:

Attached are twelve (12) copies of the Crystal River Unit 3 September 1984 Monthly Operating Report. This report is submitted in accordance with Technical Specification 6.9.1.6.

Sincerely,

G. R. Westafer  
Manager, Nuclear Operations  
Licensing and Fuel Management

AEF/feb

Attachments

cc: Mr. J. P. O'Reilly  
Regional Administrator, Region II  
Office of Inspection & Enforcement  
U.S. Nuclear Regulatory Commission  
101 Marietta Street N.W., Suite 2900  
Atlanta, GA 30323

IE24