

OPERATING DATA REPORT

DOCKET NO. 50-302
 DATE 6/1/84
 COMPLETED BY D. Graham
 TELEPHONE (904) 795-3802

OPERATING STATUS

1. Unit Name: Crystal River Unit 3
2. Reporting Period: 5/1/84 - 5/31/84
3. Licensed Thermal Power (MWt): 2544
4. Nameplate Rating (Gross MWe): 890
5. Design Electrical Rating (Net MWe): 825
6. Maximum Dependable Capacity (Gross MWe): 860
7. Maximum Dependable Capacity (Net MWe): 821
8. If Changes Occur in Capacity Ratings (Items Number 3 Through 7) Since Last Report, Give Reasons:
N/A

Notes

9. Power Level To Which Restricted, If Any (Net MWe): N/A
10. Reasons For Restrictions, If Any: N/A

	This Month	Yr.-to-Date	Cumulative
11. Hours In Reporting Period	744	3647	63287
12. Number Of Hours Reactor Was Critical	744	3341.1	40910.3
13. Reactor Reserve Shutdown Hours	0	0	1280.3
14. Hours Generator On-Line	744	3302.6	39921.6
15. Unit Reserve Shutdown Hours	0	0	0
16. Gross Thermal Energy Generated (MWH)	1765685	7904908	89869243
17. Gross Electrical Energy Generated (MWH)	605474	2742081	30668817
18. Net Electrical Energy Generated (MWH)	576770	2614083	29131166
19. Unit Service Factor	100%	90.6%	63.1%
20. Unit Availability Factor	100%	90.6%	63.1%
21. Unit Capacity Factor (Using MDC Net)	94.4%	87.3%	58.1%
22. Unit Capacity Factor (Using DER Net)	94.0%	86.9%	55.8%
23. Unit Forced Outage Rate	0%	3.1%	22.2%
24. Shutdowns Scheduled Over Next 6 Months (Type, Date, and Duration of Each): <u>None</u>			

25. If Shut Down At End Of Report Period, Estimated Date of Startup: N/A

26. Units In Test Status (Prior to Commercial Operation):	Forecast	Achieved
INITIAL CRITICALITY	_____	1/14/77
INITIAL ELECTRICITY	_____	1/30/77
COMMERCIAL OPERATION	_____	3/13/77

8406110216 840531
 PDR ADOCK 05000302
 R PDR

(9/77)

IE24

AVERAGE DAILY UNIT POWER LEVEL

DOCKET NO. 50-302

UNIT FLCRP-3

DATE 6/1/84

COMPLETED BY D. Graham

TELEPHONE (904) 795-3802

MONTH May 1984

DAY AVERAGE DAILY POWER LEVEL
(MWe-Net)

1	<u>808</u>
2	<u>806</u>
3	<u>803</u>
4	<u>803</u>
5	<u>808</u>
6	<u>795</u>
7	<u>788</u>
8	<u>777</u>
9	<u>760</u>
10	<u>531</u>
11	<u>573</u>
12	<u>798</u>
13	<u>811</u>
14	<u>812</u>
15	<u>797</u>
16	<u>796</u>

DAY AVERAGE DAILY POWER LEVEL
(MWe-Net)

17	<u>797</u>
18	<u>827</u>
19	<u>808</u>
20	<u>806</u>
21	<u>803</u>
22	<u>801</u>
23	<u>795</u>
24	<u>792</u>
25	<u>863</u>
26	<u>703</u>
27	<u>789</u>
28	<u>766</u>
29	<u>743</u>
30	<u>652</u>
31	<u>822</u>

INSTRUCTIONS

On this format, list the average daily unit power level in MWe-Net for each day in the reporting month. Compute to the nearest whole megawatt.

UNIT SHUTDOWNS AND POWER REDUCTIONS

REPORT MONTH 5/84

DOCKET NO. 50-302
 UNIT NAME FLCRP-3
 DATE 6/1/84
 COMPLETED BY S. A. Stewart
 TELEPHONE (904) 795-3802

No.	Date	Type ¹	Duration (Hours)	Reason ²	Method of Shutting Down Reactor ³	Licensee Event Report #	System Code ⁴	Component Code ⁵	Cause & Corrective Action to Prevent Recurrence
84-19	840504	F	4.8	B	N/A	N/A	CH	INSTRU	Reduced power to control feedwater oscillations during control rod performance testing.
84-20	840507	F	3.3	B	N/A	N/A	CH	INSTRU	Reduced power to control feedwater oscillations during control rod performance testing.
84-21	840509	S	47.5	B	N/A	N/A	HC	HTEXCH	Reduced power to clean condenser tubes.
84-22	840509	S	1.3	B	N/A	N/A	CD	INSTRU	Reduced power to perform main steam throttle valve testing.
84-23	840529	S	16.8	B	N/A	N/A	HC	HTEXCH	Reduced power to clean condenser waterboxes.

¹
 F: Forced
 S: Scheduled

²
 Reason:
 A-Equipment Failure (Explain)
 B-Maintenance of Test
 C-Refueling
 D-Regulatory Restriction
 E-Operator Training & License Examination
 F-Administrative
 G-Operational Error (Explain)
 H-Other (Explain)

³
 Method:
 1-Manual
 2-Manual Scram.
 3-Automatic Scram.
 4-Other (Explain)

⁴
 Exhibit G - Instructions
 for Preparation of Data
 Entry Sheets for Licensee
 Event Report (LER) File (NUREG-
 0161)

⁵
 Exhibit I - Same Source

MONTHLY OPERATIONAL SUMMARY STATEMENT

DOCKET NO. 50-302

UNIT FLCRP-3

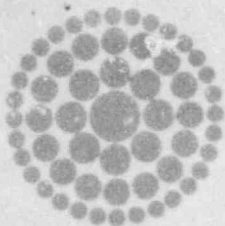
DATE 6/1/84

COMPLETED BY S. A. Stewart

TELEPHONE (904) 795-3802

MONTH May 1984

SUMMARY STATEMENT: The plant remained on-line the entire month. Power was reduced twice for control rod performance testing and to perform steam throttle valve testing. The plant reduced power to clean the condenser tubes and waterboxes.



**Florida
Power**
CORPORATION

June 6, 1984
3F0684-04

Mr. Richard C. DeYoung, Director
Office of Inspection and Enforcement
U.S. Nuclear Regulatory Commission
Attn: Document Control Desk
Washington, DC 20555

Subject: Crystal River Unit 3
Docket No. 50-302
Operating License No. DPR-72
Monthly Operating Report

Dear Sir:

Attached are twelve (12) copies of the Crystal River Unit 3 May 1984 Monthly Operating Report. This report is submitted in accordance with Technical Specification 6.9.1.6.

Sincerely,

G. R. Westafer
Manager, Nuclear Operations
Licensing and Fuel Management

DVH/feb

Attachments

cc: Mr. J. P. O'Reilly
Regional Administrator, Region II
Office of Inspection & Enforcement
U.S. Nuclear Regulatory Commission
101 Marietta Street N.W., Suite 2900
Atlanta, GA 30303

IE24
11