

496

RELATIVE TO THE CASE

ISHAM, LINCOLN & BEALE
COUNSELORS AT LAW

DOCKETED
USNRC

THREE FIRST NATIONAL PLAZA
CHICAGO, ILLINOIS 60602
TELEPHONE 312 558-7500
TELEX 2-5288

'84 APR 12 A11:15

EDWARD S. ISHAM, 1872-1902
ROBERT T. LINCOLN, 1872-1889
WILLIAM G. BEALE, 1885-1923

WASHINGTON OFFICE
1120 CONNECTICUT AVENUE, N.W.
SUITE 840
WASHINGTON, D.C. 20036
202 833-9730

April 9, 1984

Alan S. Rosenthal, Chairman
Administrative Judge
Atomic Safety and Licensing
Appeal Board
U.S. Nuclear Regulatory
Commission
Washington, D.C. 20555

Howard A. Wilber
Administrative Judge
Atomic Safety and Licensing
Appeal Board
U.S. Nuclear Regulatory
Commission
Washington, D.C. 20555

Dr. Reginald L. Gotchy
Administrative Judge
Atomic Safety and Licensing
Appeal Board
U.S. Nuclear Regulatory
Commission
Washington, D.C. 20555

Re: In the Matter of Commonwealth Edison Company
(Byron Nuclear Power Station, Units 1 and 2)
Docket Nos. 50-454 and 50-455

Dear Administrative Judges:

This disclosure is submitted pursuant to Applicant's obligation under Duke Power Co. (William B. McGuire Nuclear Station, Units 1 and 2), ALAB-143, 6 AEC 623, 625-26 (1973). On March 2, 1984, Commonwealth Edison Company instituted various organizational changes related to its nuclear stations construction and operation activities. Applicant's organizational structure was the subject of testimony presented on behalf of the Applicant at the operating license hearings by Cordell Reed (ff. Tr. 2594), Louis O. Del George (ff. Tr. 2344), Walter J. Shewski (ff. Tr. 2364), and Robert E. Querio (ff. Tr. 2714). In addition, in its Initial Decision, the Licensing Board made findings with respect to Applicant's organizational structure. (LBP-84-2, 19 NRC _____, slip op. at 141 through 151. The principal changes to the Company's corporate structure, insofar as these changes relate to Applicant's testimony and Licensing Board findings, are explained in the following paragraphs.

8404130152 840409
PDR ADOCK 05000454
G PDR

DSO3

Administrative Judges
Page Two
April 9, 1984

First, at the time of the hearings, the Manager of Quality Assurance reported directly to the Company's Vice Chairman. The Manager of Quality Assurance now reports directly to the Chairman, Applicant's Chief Executive Officer. (Cf. ID, ¶D-48). As a result, the Quality Assurance Manager has an equivalent reporting relationship to the Chairman as does the Manager of Projects, who is responsible for the Company's construction project production activities.

Second, the new position of Assistant Manager of Quality Assurance was created. The Assistant Manager of Quality Assurance reports directly to the Manager of Quality Assurance. The new position was created to provide assistance to the Manager of Quality Assurance in carrying out his oversight responsibilities with respect to construction projects.

Third, the new position of Assistant Vice President, Nuclear Services was created. At the time of the hearings two individuals reported to the Vice President of Nuclear Operations: the Division Vice President, Nuclear Stations Division and General Manager ("Division Vice President") and the Assistant Vice President, Engineering and Licensing. The Operations Manager, Maintenance Manager, and Technical Services Manager reported to the Division Vice President. The Director of Nuclear Licensing, Director of Nuclear Fuel Services, and Station Nuclear Engineering Manager reported to the Assistant Vice President, Engineering and Licensing. (ID, ¶D-45). Under the revised structure the Technical Services Manager, Director of Nuclear Fuel Services and Production Training Manager report to the Assistant Vice President, Nuclear Services. The Division Vice President now has reporting to him the Operations Manager, Maintenance Manager, Administrative Engineer, and the operating nuclear facility superintendents. The Assistant Vice President, Licensing and Engineering, is responsible for nuclear licensing and operating plant engineering. The addition of the position of Assistant Vice President, Nuclear Services has reduced the scope of activities under the direct control of the Division Vice President, allowing him to devote more time to the management of station operations. The addition also brings to the Nuclear Operations Division another executive, allowing for closer review and coordination of nuclear services provided to the nuclear stations.

Administrative Judges
Page Three
April 9, 1984

For illustrative purposes, we enclose copies of the most recent organizational charts which are included in the Company's Quality Assurance Manual.

Very truly yours,

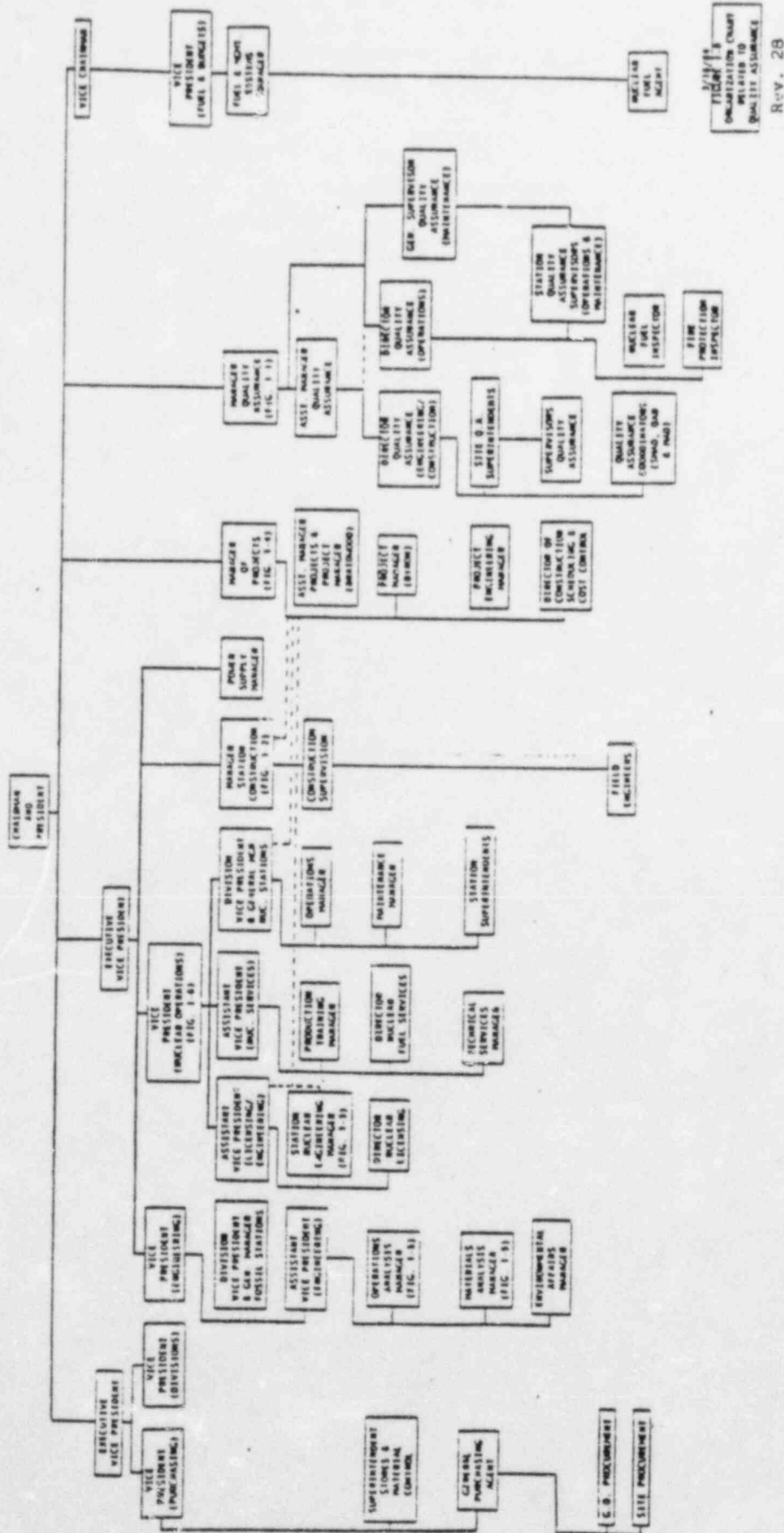


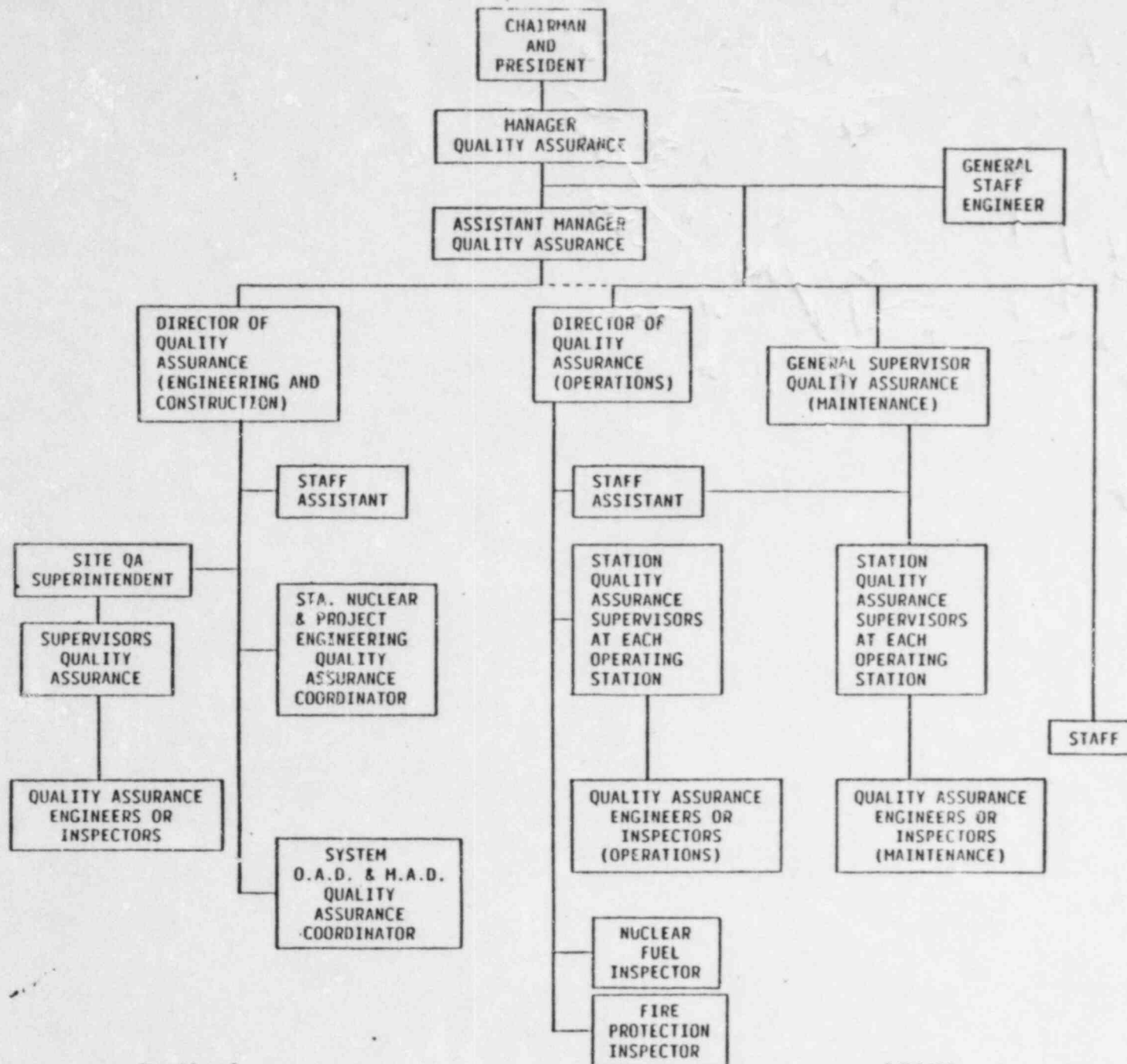
Alan P. Bielawski
One of the Attorneys for
Commonwealth Edison Company

APB:gi

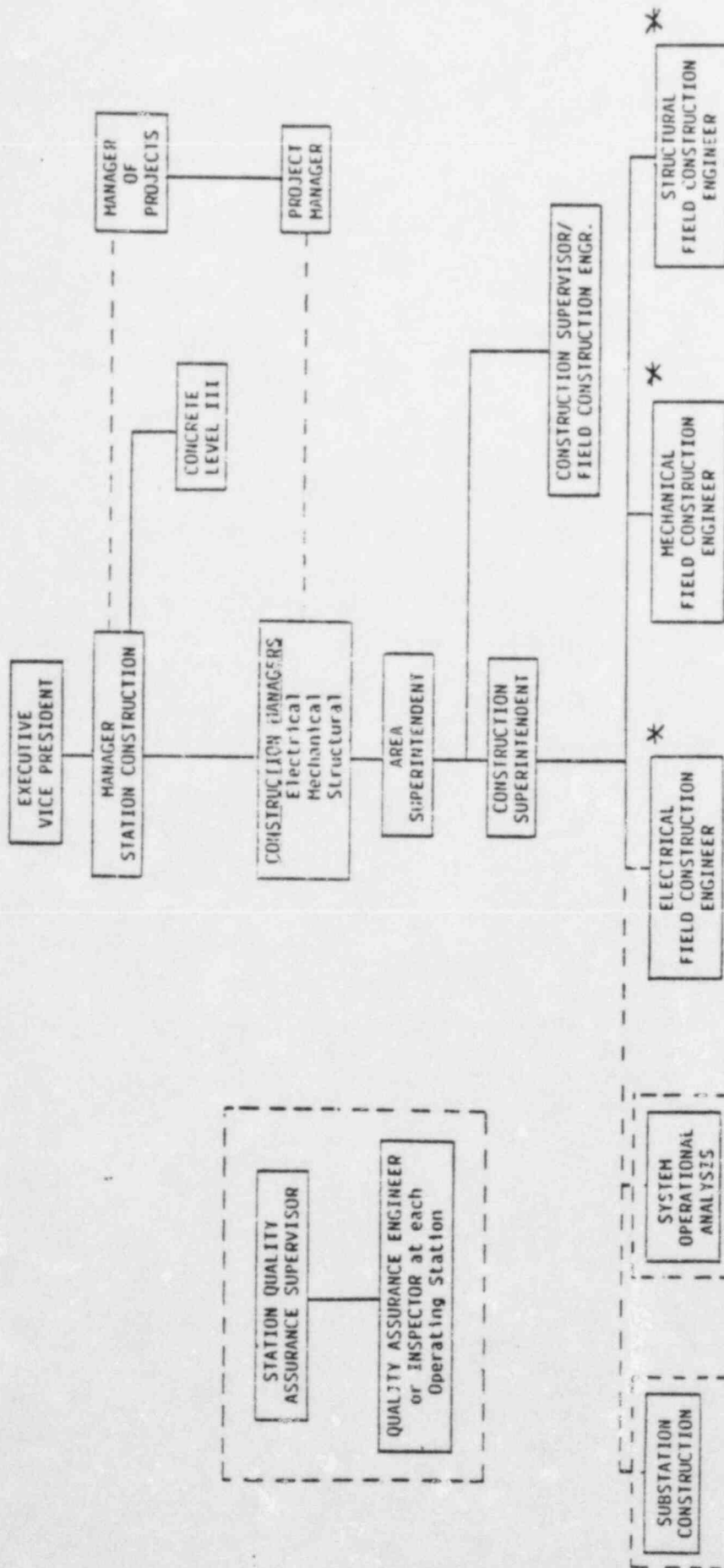
Encl.

cc: Service List (w/enc.)





----- Functional

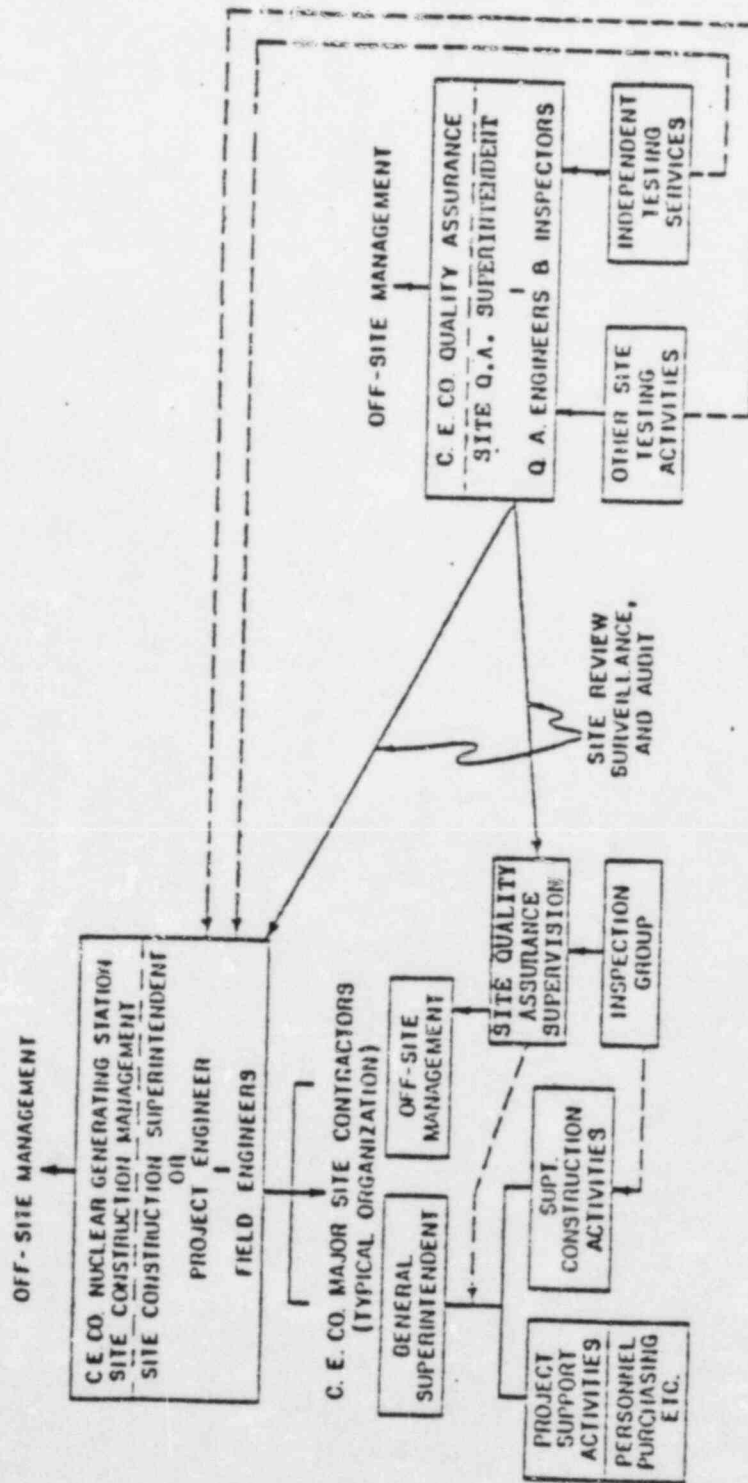


* As-required
----- Administrative
----- Functional

3/16/84

FIGURE 1-2
STATION CONSTRUCTION
DEPARTMENT

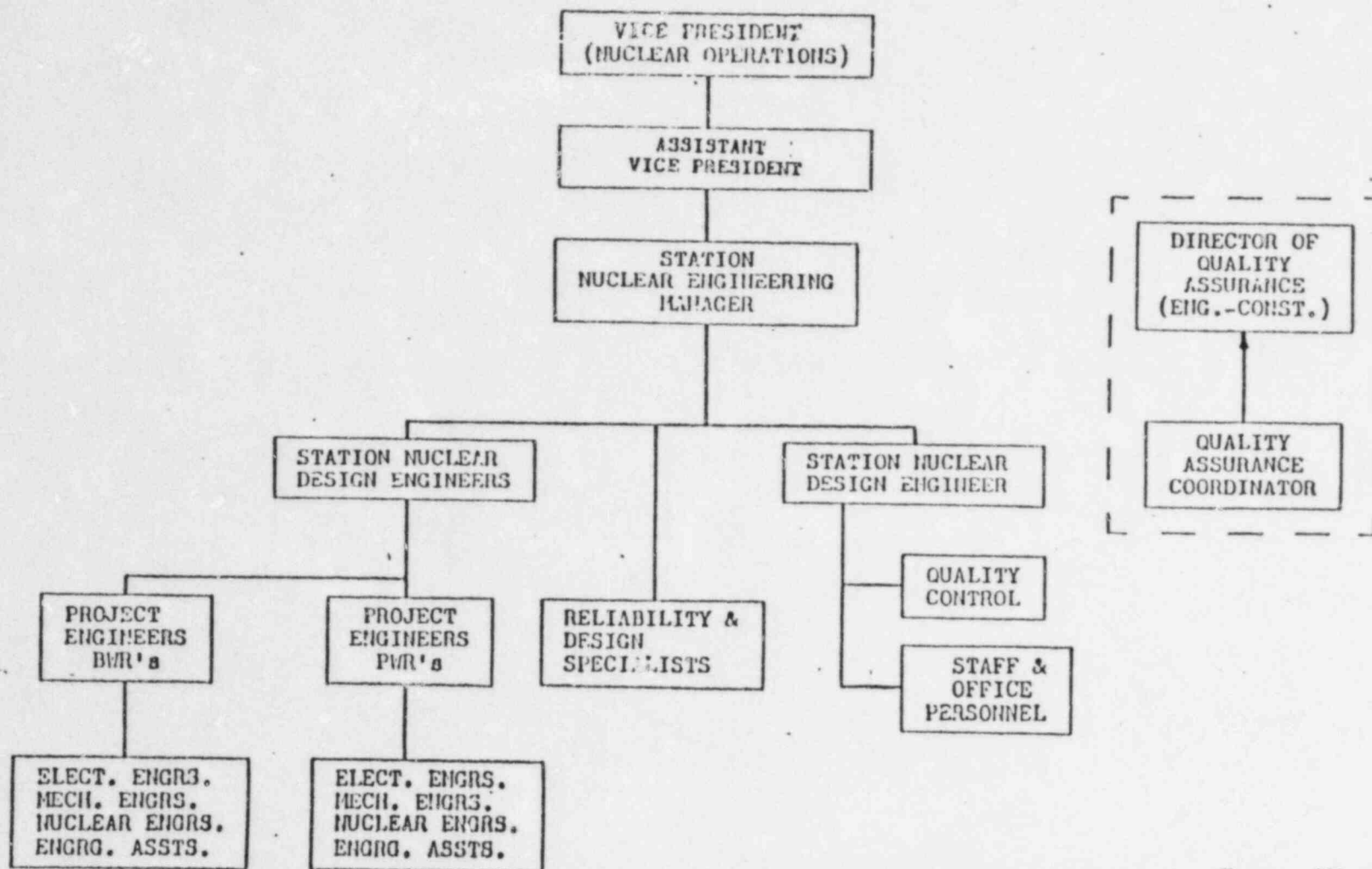
Rev. 28



12-29-80

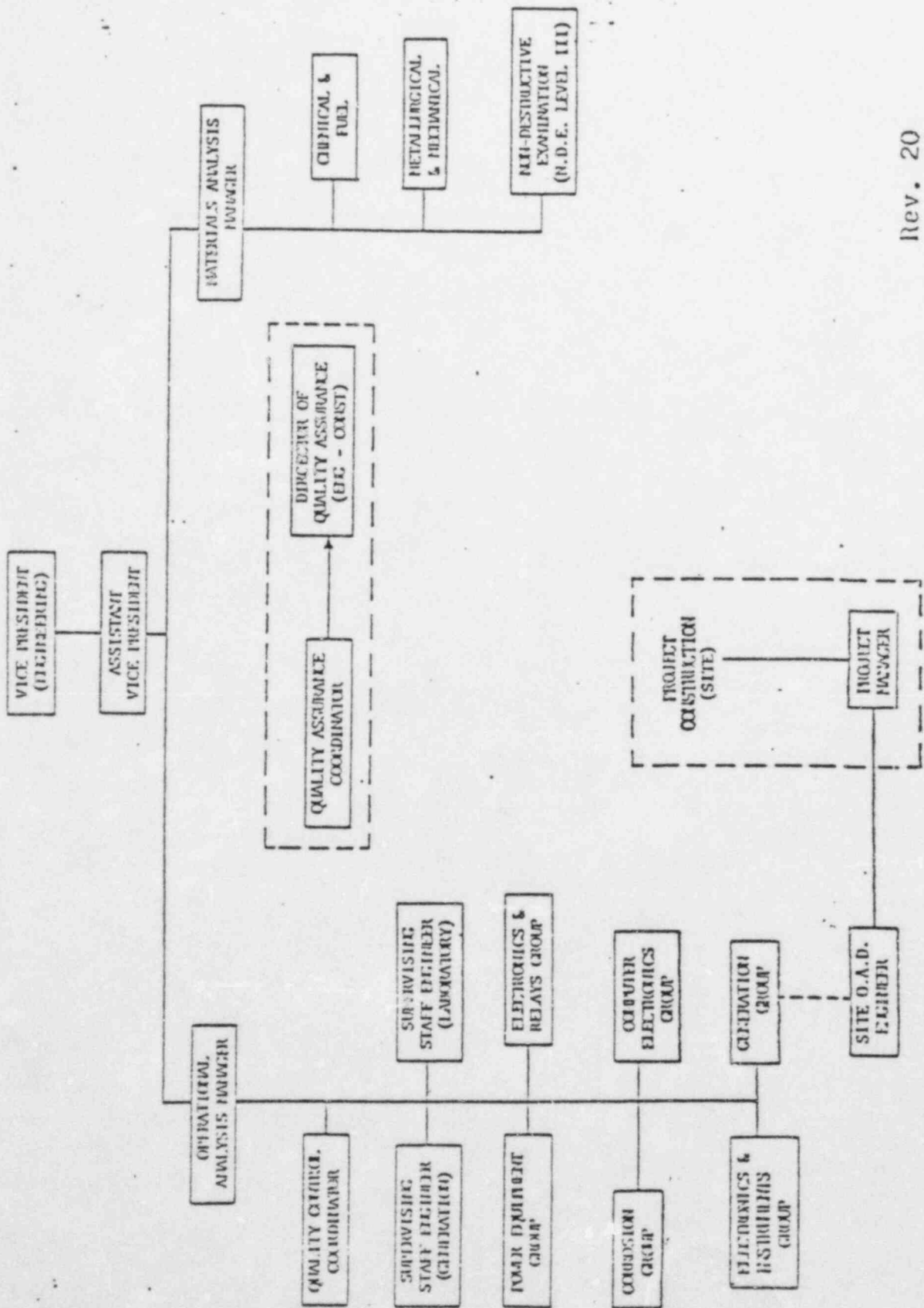
FIGURE 1-2.1

C. E. CO. NUCLEAR GENERATING STATION
SITE ORGANIZATION



Rev. 17
7/10/81

FIGURE 1-3
STATION NUCLEAR
ENGINEERING
DEPARTMENT

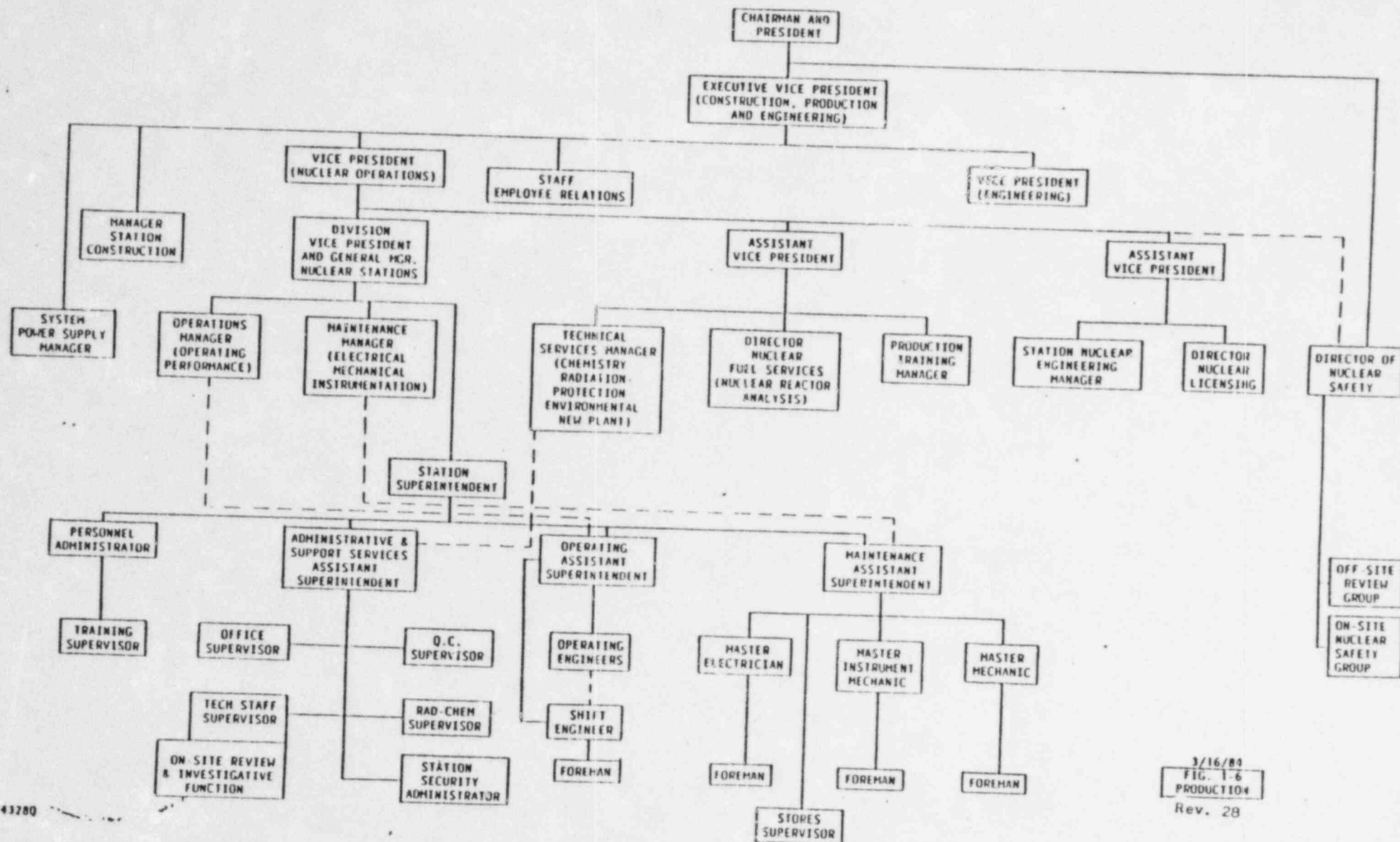


Rev. 20
2-17-82

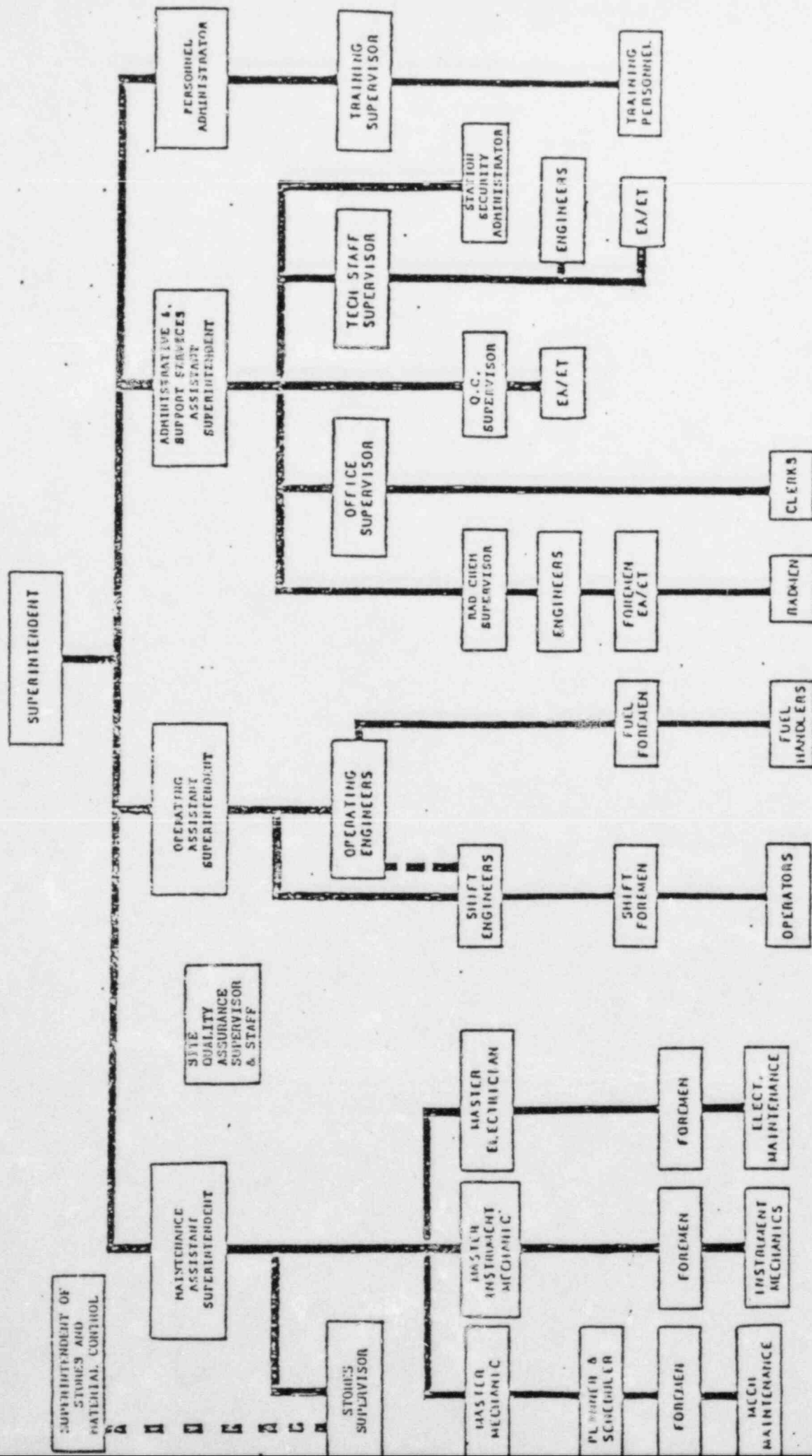
FIGURE 1-5
OPERATIONAL MATERIALS
ANALYSIS + ANALYSIS
DEPARTMENT

ADMINISTRATIVE

----- FUNCTIONAL



STATION PRODUCTION DEPARTMENT ORGANIZATION



2-17-82
FIGURE 1-7
REVISION 20

ADMINISTRATIVE
FUNCTIONAL