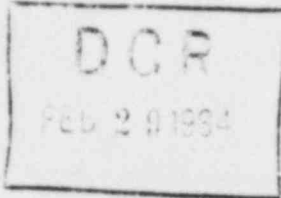


LIST OF EFFECTIVE PAGES

<u>PAGE NUMBER</u>	<u>REVISION NUMBER AND DATE</u>
Page 1 of 14	Revision 10, 2/23/84
Page 2 of 14	Revision 10, 2/23/84
Page 3 of 14	Revision 10, 2/23/84
Page 4 of 14	Revision 10, 2/23/84
Page 5 of 14	Revision 10, 2/23/84
Page 6 of 14	Revision 9, 11/03/83
Page 7 of 14	Revision 9, 11/03/83
Page 8 of 14	Revision 10, 2/23/84
Page 9 of 14	Revision 9, 11/03/83
Page 10 of 14	Revision 10, 2/23/84
Page 11 of 14	Revision 9, 11/03/83
Page 12 of 14	Revision 10, 2/23/84
Page 13 of 14	Revision 10, 2/23/84
Page 14 of 14	Revision 9, 11/03/83



TELEPHONE NUMBERS FOR KEY PLANT PERSONNEL

MANAGERIAL

W.G. Smith, Jr.
B.A. Svensson
E.L. Townley
E.A. Smarrella

OPERATIONS

K.R. Baker
C.E. Murphy
D.M. Draper
D.F. Krause
T.R. Stephens
G.F. Northcutt
L.K. Smith
A.S. Guzicki
L.G. Boone
H.F. Runser

TECHNICAL

C. Miles
S. Vince
A.A. Blind
T.A. Kriesel
D.C. Palmer
R. Simms
J.T. Wojcik
C.A. Ross
K.S. Chapman
W.F. Scott

MAINTENANCE

J. Allard
R.L. Dudding
F.W. Wenman
W.D. Cornell

OUTAGE PLANNING

E.A. Abshagen
N.C. Williams

HOME

OFFICE

TELEPHONE NUMBERS FOR KEY PLANT PERSONNEL

QC

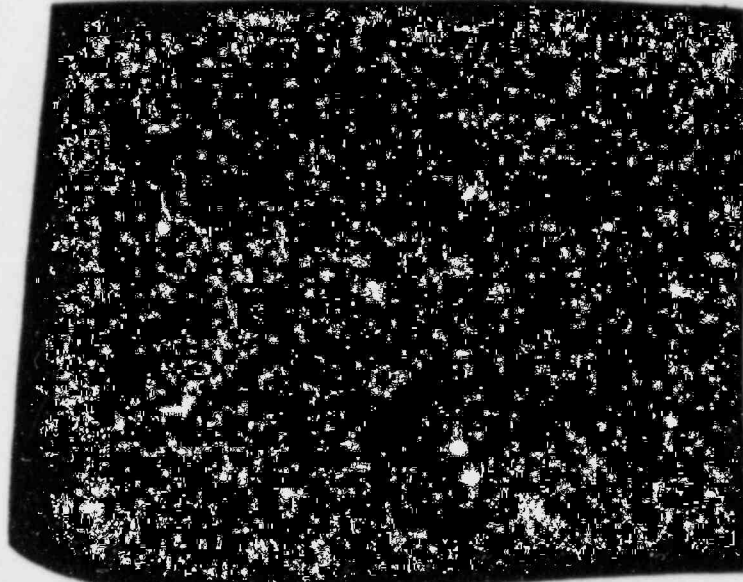
J.P. Stietzel
E.A. Morse
H.H. Bolinger
R.L. Otte

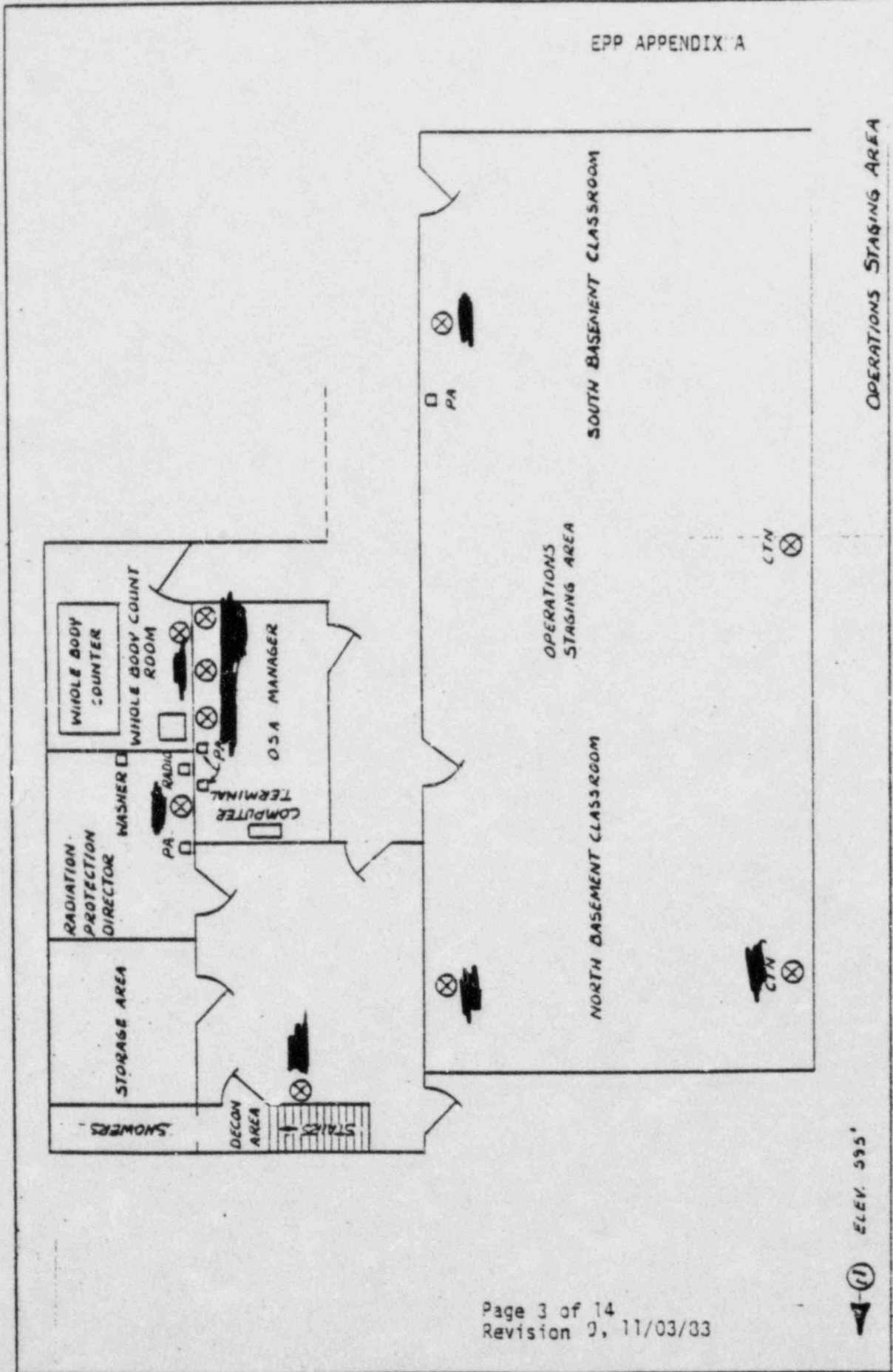
HOME

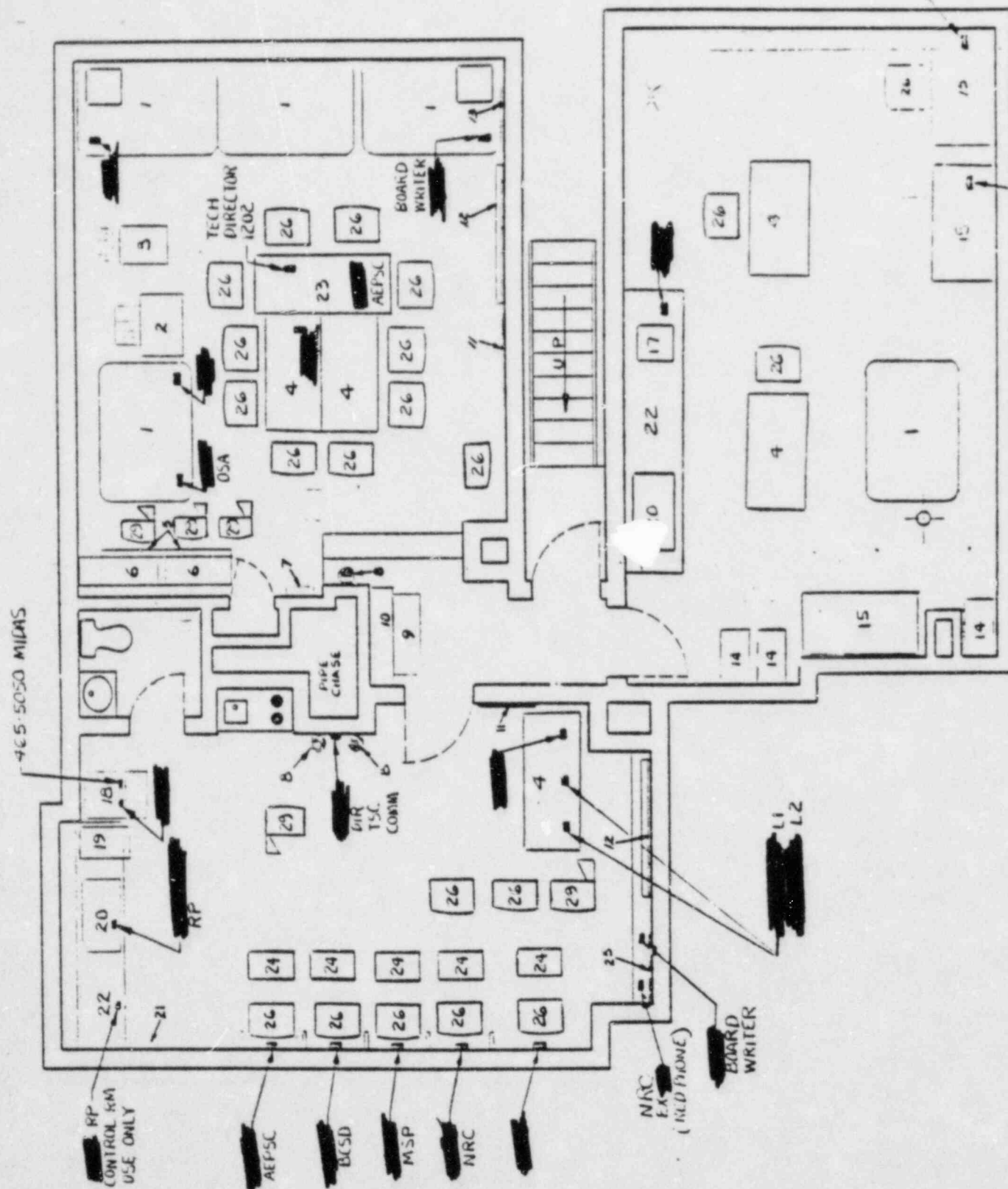
OFFICE

ADMINISTRATIVE

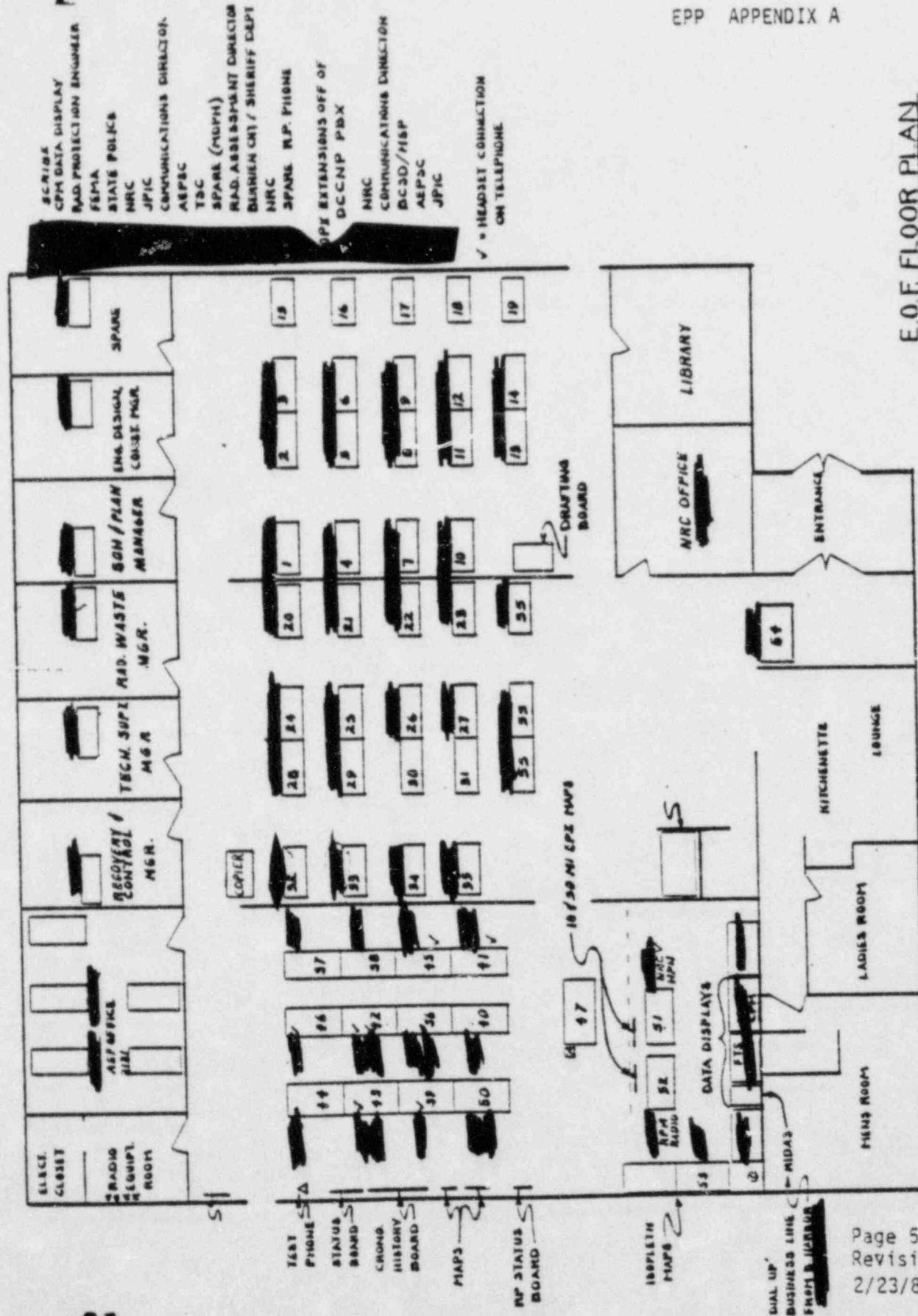
L.J. Matthias
D.A. Yount
M.E. McAllister
J.W. Veach
D.D. Nelson
F.A. Arsenault
T. Lemon
J. Dickson
J. Labis







TECHNICAL SUPPORT CENTER
EXISTING FURNITURE ARRANGEMENT



E.O.F. FLOOR PLAN
REV. 4 10-31-83 MZ

EMERGENCY OPERATIONS FACILITY
TELEPHONE EXTENSIONS

<u>LOCATION NO.</u>	<u>POSITION</u>	<u>TELEPHONE EXTENSION</u>
1	Engineering Director	
2	Mechanical Engineer	
3	Electrical Engineer	
4	Civil Engineer	
5	Purchasing Director	
6	Purchasing Support	
7	Construction Director	
8	Construction Support	
9	Construction Support	
10	Design Coordinator	
11	Construction Support	
12	QA Director	
13	NSSS Support	
14	NSSS Support	
15	Engineer	
16	Engineer	
17	Engineer	
18	Engineer	
19	Engineer	
20	Reactor Physics Analyst	
21	NSL Support Coordinator	
22	Procedures Coordinator	
23	(TSM Spare)	
24	Scheduler	
25	Scheduler	
26	RCM Staff	
27	RCM Staff	
28	Planner	
29	Planner	
30	RCM Staff	
31	RCM Staff	
32	Telecopy ext.	
33	alternate	
34	(RCWHM Spare)	
35	Meteorological Data Coordinator	
36	NRC	
37	FEMA	
38	JPIC	
39	TSC	
40	NRC	
41	Michigan Dept. Public Health	
42	State Police	
43	AEPS (Engineering EOF)	
44	Scribe	

EMERGENCY OPERATIONS FACILITY
TELEPHONE EXTENSIONS

<u>LOCATION NO.</u>	<u>POSITION</u>	<u>TELEPHONE EXTENSION</u>
45	JPIC	
46	Berrien County	
47	Crisis Management Table	
50	Communications Coordinator	
51	NRC - HPN Communicator	
52	Radiation Protection Manager	
53	Radiological Assessment Director	
54	Security Guard	
55	Typing (4 positions)	
	AEP Office	
	Rad Waste Manager	
	Sched. & Plan. Manager	
	Tech. Support Manager	
	Recovery Manager	
	Eng. Design & Const. Manager	
	NRC Office	
	Spare	

OFF-SITE NOTIFICATION LIST

(PMP-2080-EPP-012)

HOME

OFFICE

M.P. Alexich (Vice-President and
Chief Nuclear Engineer)

R.W. Jurgensen (Consulting Nuclear
Engineer)

J.E. Dolan (Vice-Chairman Eng.
& Construction Engineering) Emerg.

G.E. LeMasters (Executive Assistant
to the I&M President)

W.A. Black (I&ME Co. President)

R.C. Menge (I&ME Co. Vice-President)

J.E. Hills (Energy Information Center
Manager)

S. Krieger (Energy Information
Center)

C.W. Hasty (Public Affairs Director)

V.P. LaBarbera (Information Services
Manager)

E.R. Swanson (NRC Resident Inspector)


J. Heller (NRC Resident Inspector)

Michigan State Police
Benton Harbor Post



OFF-SITE NOTIFICATION LIST (Cont'd)

(PMP-2080-EPP-012)

	<u>HOME</u>	<u>OFFICE</u>
Michigan State Police Emergency Planning		
Berrien County Sheriff's Department		

TELEPHONE NUMBERS FOR OFF-SITE GROUPSNAME OF OFF-SITE GROUP OR AGENCYTELEPHONE

American Nuclear Insurers

Berrien County Sheriff's Department

Emerg.

Chemical Transfer Emergency Center (Chemtrek)

City of Bridgman Fire Department

Department of Energy (Argonne National Labs)

Duty Hours:

Off-Duty Hours:

Fort Wayne Dispatcher Regional

Audinet

INPO

Lake Township Ambulance

Lake Township Fire Department

Memorial Hospital, St. Joseph, Michigan

General
Emerg.

Mercy Hospital, Benton Harbor, Michigan

The Michigan Department of Public Health

The Michigan Department of State Police
(Benton Harbor Post 57)

National Oceanic and Atmospheric Administration


Radiation Managment Corp.
General Business No.Regional Director, UNSRC, Region III,
Office of Inspection and Enforcement

United States Coast Guard

Westinghouse

EMERGENCY TELEPHONE NUMBERS FOR NRC NOTIFICATION

<u>TELEPHONE SYSTEM</u>	<u>TELEPHONE NUMBER</u>
1. Emergency Notification System to NRC Operations Center	(Lift Receiver from Cradle)
2. Commercial Telephone System to NRC Operations Center (via Bethesda Central Office)	
3. Commercial Telephone System to NRC Operations Center (via Silver Spring Central Office)	
4. Health Physics Network to NRC Operations Center	
5. Commercial Telephone System to NRC Operator (via Bethesda General Office)	
6. Regional Director USNRC, Region III Office of Inspection and Enforcement	



WESTINGHOUSE PROPRIETARY CLASS 2

February 10, 1984

Central Area
Donald C. Cook SiteEMERGENCY COMMUNICATION NETWORK

Please inform one Westinghouse contact, using this list in the order shown, to ensure early notification to Westinghouse of an emergency occurring at your plant. Please be prepared to discuss as many facts as are available at the time of the call and identify a cognizant individual in your organization to provide continuing communications and updates to Westinghouse.

	<u>Title</u>	<u>Name</u>	<u>Office</u>	<u>Home</u>	<u>HHL</u>
1.	Operating Plant Regional Manager	Bill Johnson			
	1st Alternate	Tony Suda			
	2nd Alternate	Dave Hollein			
2.	Service Response Manager	Tom Mitlo			
	1st Alternate	Bob Stokes			
	2nd Alternate	Joe Leblang			
3.	Emergency Response Director	Tom Anderson			
4.	Emergency Response Deputy Director	Ron Lehr			
5.	Emergency News	Mike Mangan			

NOTE: Unless indicated otherwise, all phone numbers are area code 412. Where an area code other than 412 is shown, it applies to the office, home, and HHL numbers.

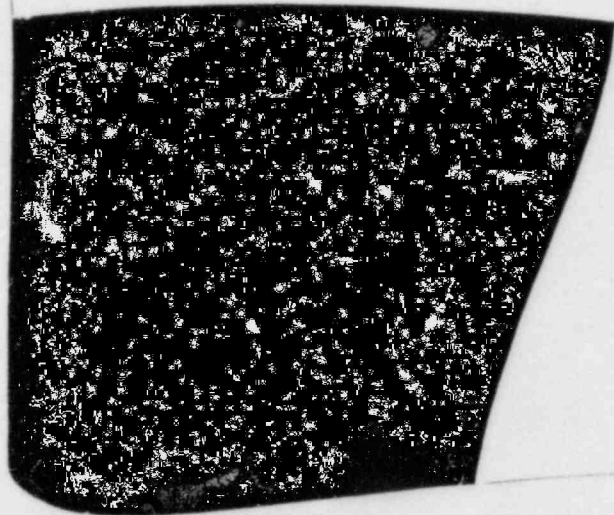
CANTON CENTRAL COMPUTER COMPLEX

TSO Dial Up

Console Room-Console Operator

Shift Supervisor

Communications Room
Alternate:



OFFICE

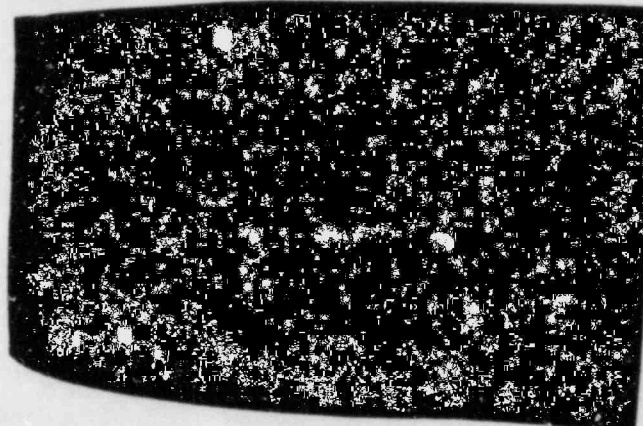
HOME

Joe Hubbard
Head, Computer Operations

Tom Marney
Asst. Head, Computer Operations

Dick Bezek
Head, Computer Systems Division

Charles Falcone
Director, ISD



MIDAS COMPUTER PROGRAM

TSO Dial Up



OFFICE

HOME

Data General

Tom Celi

Mike Pine

Off-Hours Status

Telecopy:



Pickard, Lowe & Garrick

Mark Abrams

INDIANA & MICHIGAN POWER COMPANY
DONALD C. COOK NUCLEAR PLANT

PLANT MANAGER PROCEDURES

INDEX

Identification Number	TITLE	Cover Sheet Rev. & Date	Procedure Rev. No.
PMP 2080 EPP.013	Duties of the Individual Who Discovers an Emergency Condition	Revision 1 6-24-82	
EPP.014	Personnel Injury	Revision 2 1-20-84	
EPP.015	Responsibility of the On-Site Emergency Coordinator	Revision 2 10-12-82	
EPP Appendix A	Telephone Numbers for Key Plant Personnel	Revision 10 2-23-84	
EPP Appendix B	Hospital Assistance Plan	Revision 4 12-15-82	TP-1, 4-12-83 EXP NA
EPP Appendix C	Radiological Supplement	Revision 0 4-1-81	



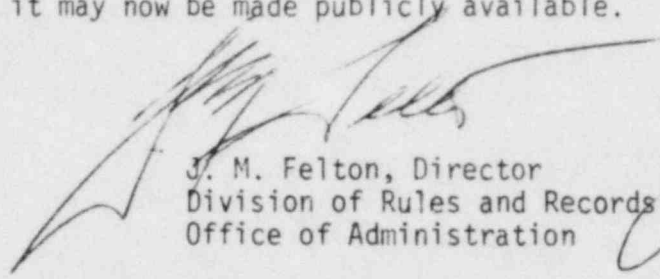
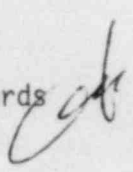
UNITED STATES
NUCLEAR REGULATORY COMMISSION
WASHINGTON, D. C. 20555

March 22, 1984

50-315/316 D. C. Cook

MEMORANDUM FOR: Chief, Document Management Branch, TIDC
FROM: Director, Division of Rules and Records, ADM
SUBJECT: REVIEW OF UTILITY EMERGENCY PLAN DOCUMENTATION

The Division of Rules and Records has reviewed the attached document and has determined that it may now be made publicly available.


J. M. Felton, Director
Division of Rules and Records
Office of Administration 

Attachment: As stated

DOCUMENT ISSUE RECORD

INDIANA & MICHIGAN ELECTRIC COMPANY

DONALD C. COOK NUCLEAR PLANT

DOCUMENT CONTROL — Original

MASTER FILE — Purple

LIBRARY — Gold

MANAGERIAL — Brown

QUALITY ASSURANCE — Red

COLOR CODED DISTRIBUTION

OPERATIONS — Green

MAINTENANCE — Blue

TECHNICAL — Pink

QUALITY CONTROL — Beige

ADMINISTRATIVE — Orange

PLANNING — Black

OTHERS — SEE LIST

CONSTRUCTION — YELLOW

DOCUMENT — SUBJECT OR TITLE	DOCUMENT ORIGINATOR:	DOCUMENT NO. AND/OR REVISION	NO. OF COPIES ISSUED
<p>INDIANA & MICHIGAN ELECTRIC COMPANY</p> <p>Donald C. Cook Nuclear Plant</p>	<p>Indiana & Michigan Electric Company</p> <p>INC</p> <div style="border: 1px solid black; padding: 5px; text-align: center;"> <p>DCR</p> <p>FEB 29 1984</p> </div>	<p>Document No. 10, Rev. 1-30-84</p> <p style="text-align: right;">50-315 50-316</p>	

Document Issue Record Receipt Acknowledgement:

Documents affiliated with this D.I.R. # have been filed in _____

_____ file. Superseded documents have been destroyed or modified as applicable.

Shirley E. Helch

Signature

3/8/84

Date

RETURN TO: PLANT DOCUMENT CONTROL

2403090103 840223

CP ADOCK 05000315

*DISTRIBUTION LIST FOR OTHERS: COMMENTS AND/OR NOTATIONS:

Visitor Car-1

NRC 315-1

NRC 315-1

NRC 315-1

NRC Wash, DC-1

Westinghouse-2

315-1

315-1

315-1

315-1

ANPCC-Columbus:

W. F. MacRae-1

Info-1

Control-1

W. P. Alexander-1

W. P. Krongauz-1

W. Labarthe-1

315-1

315-1

315-1

X005

0/1