

NOTES:

- A SEE FIGURE 17.2-1
- B SEE FIGURE 13.1-2
- C SEE FIGURE 13.1-6
- D SEE FIGURE 13.1-4
- E SEE FIGURE 13.1-3

FIGURE 13.1-1

CORPORATE STRUCTURE
RIVER BEND STATION - UNIT 1

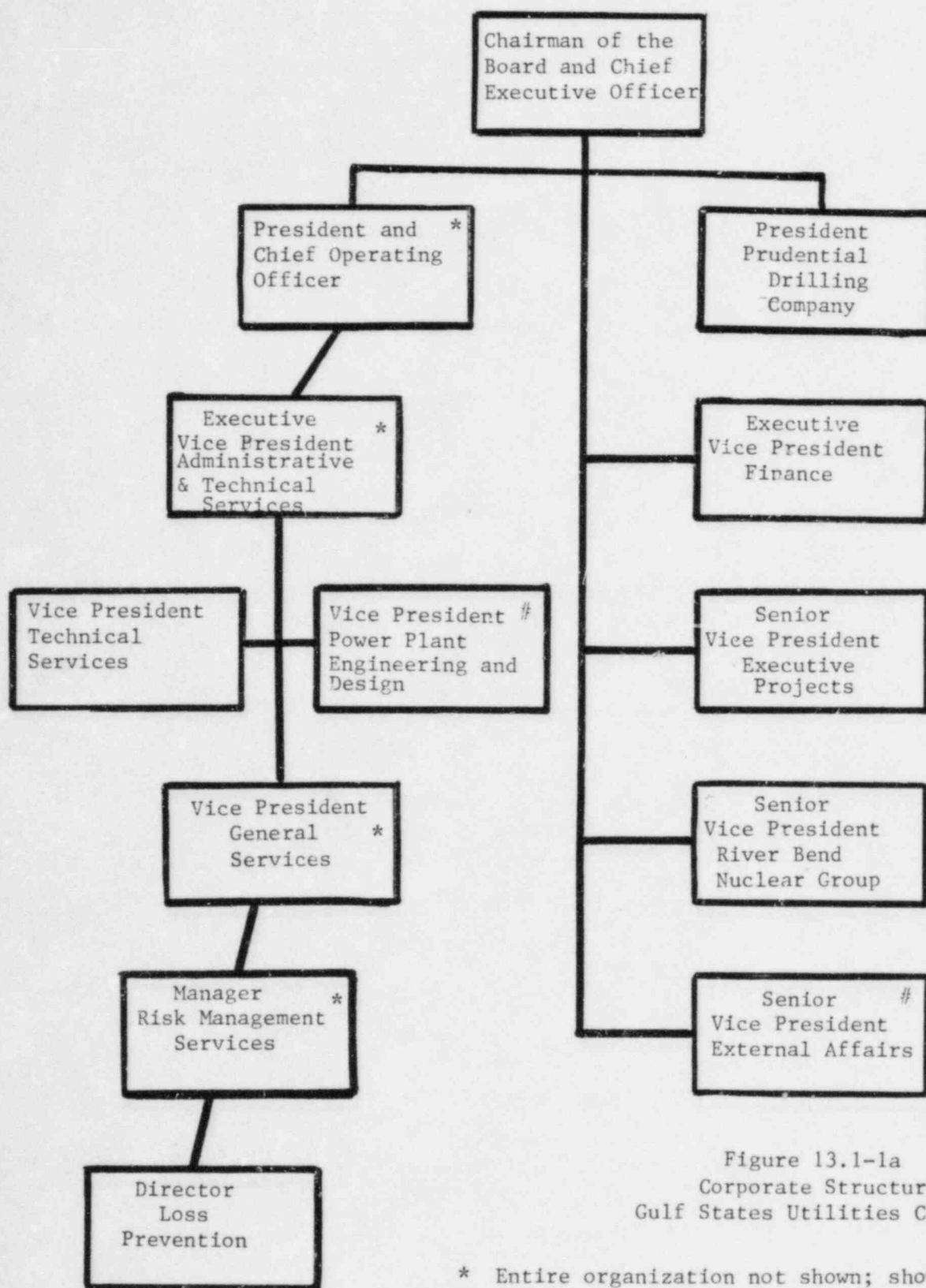
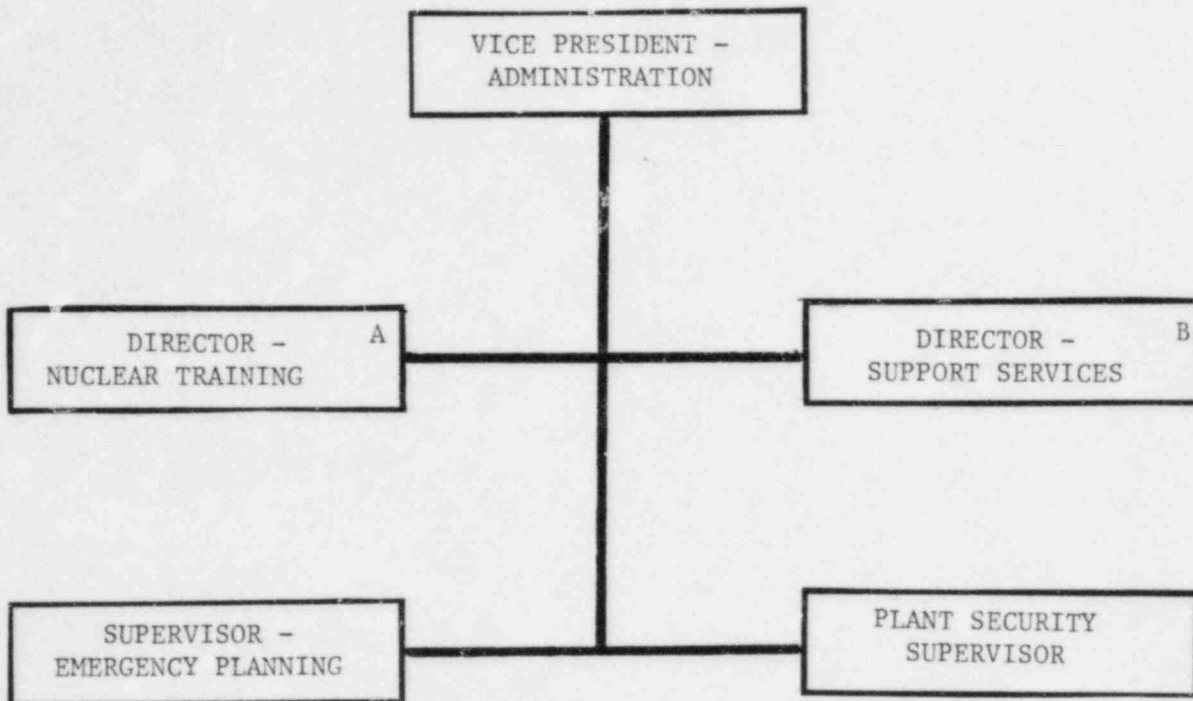


Figure 13.1-1a
Corporate Structure
Gulf States Utilities Company

* Entire organization not shown; shown for clarity only

Nuclear Review Board (NRB) member



NOTES:

- A SEE FIGURE 13.1-2b
- B SEE FIGURE 13.1-2a

FIGURE 13.1-2

PLANT ADMINISTRATIVE STRUCTURE
RIVER BEND STATION - UNIT 1

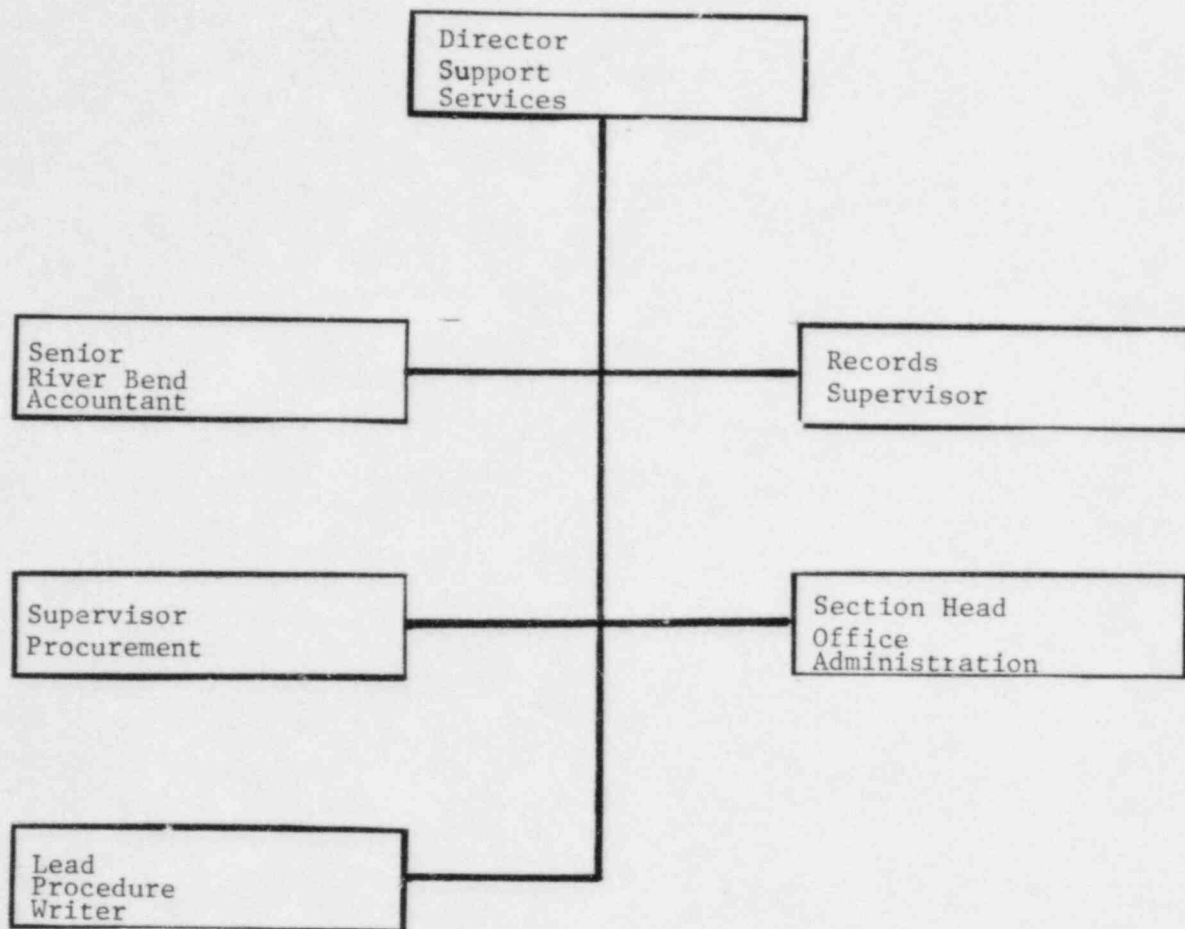


FIGURE 13.1-2a

PLANT ADMINISTRATIVE STRUCTURE
SUPPORT SERVICES SECTION
RIVER BEND STATION - UNIT 1

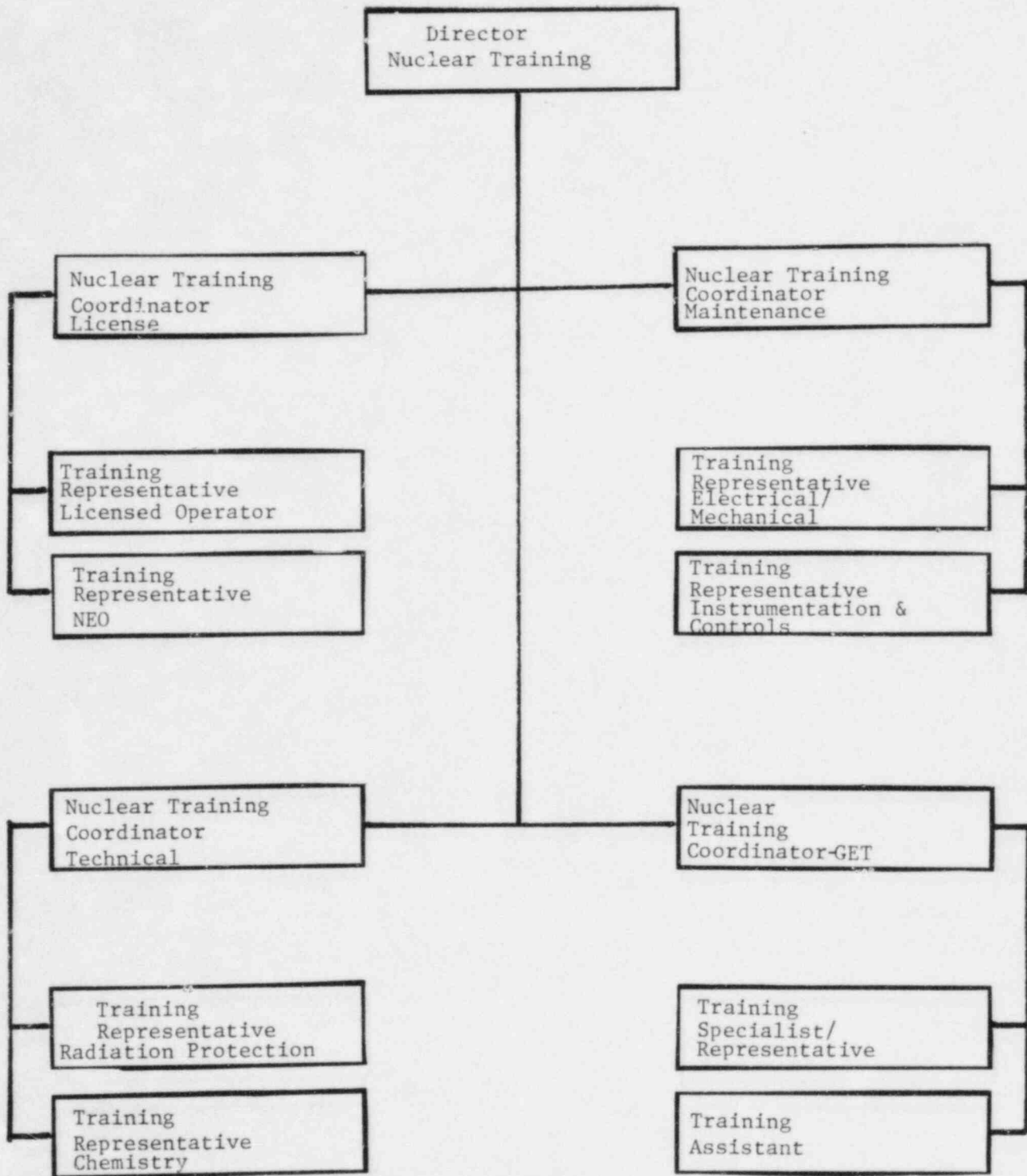


FIGURE 13.1-2b

PLANT ADMINISTRATIVE STRUCTURE
NUCLEAR TRAINING SECTION
RIVER BEND STATION - UNIT 1

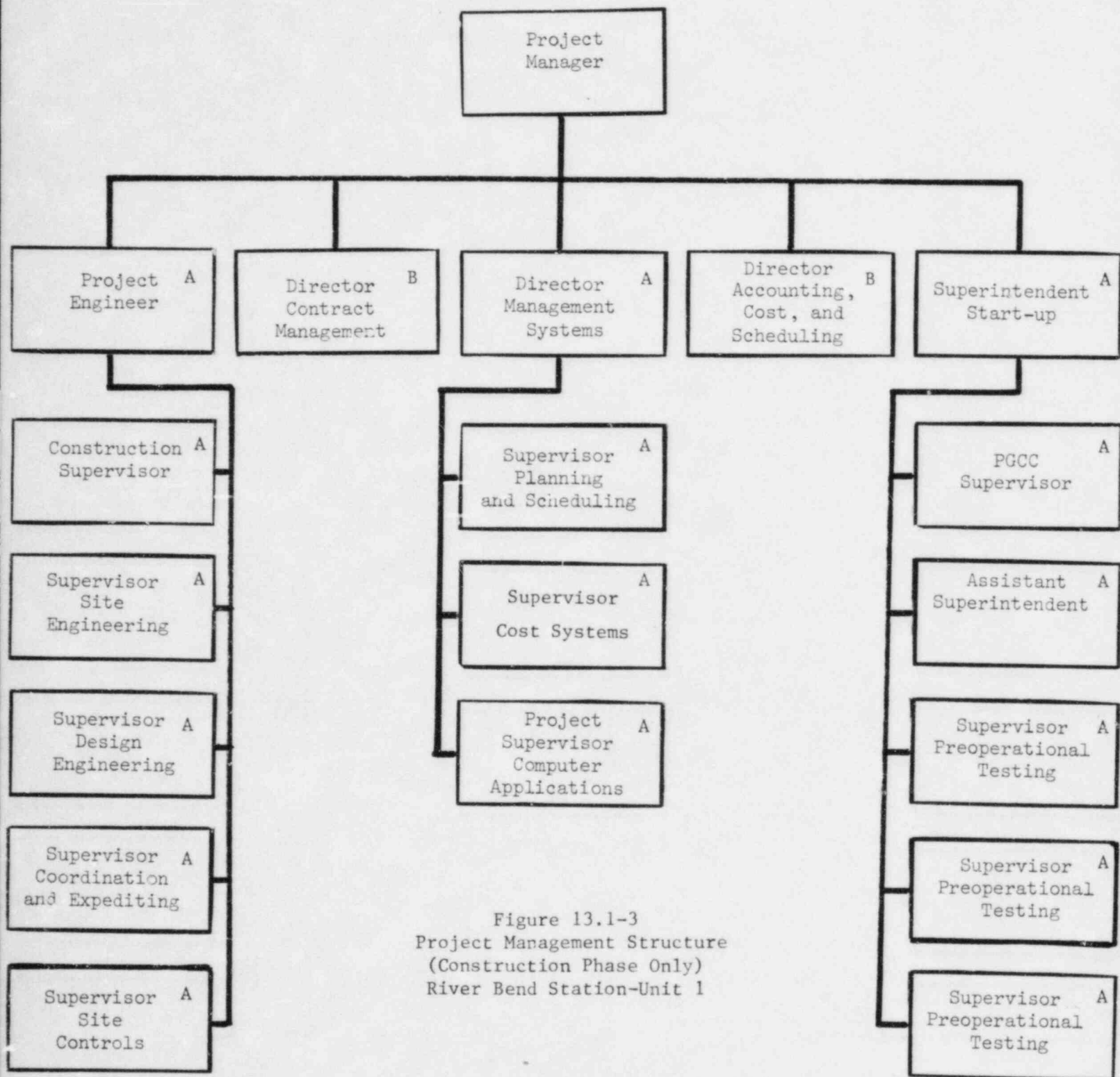


Figure 13.1-3
Project Management Structure
(Construction Phase Only)
River Bend Station-Unit 1

A Located at River Bend Station

B Staff located at River Bend Station
and Corporate Offices

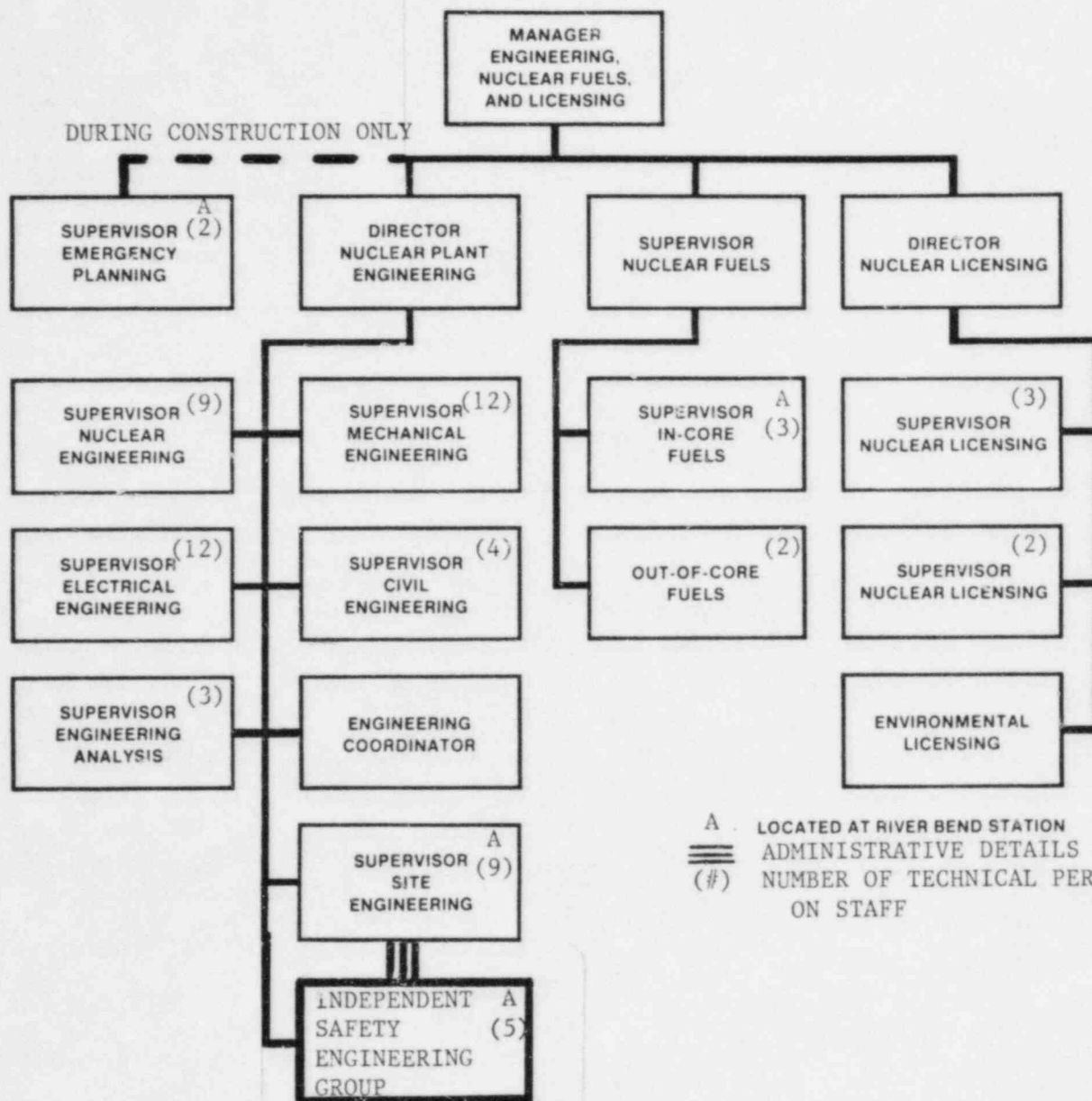
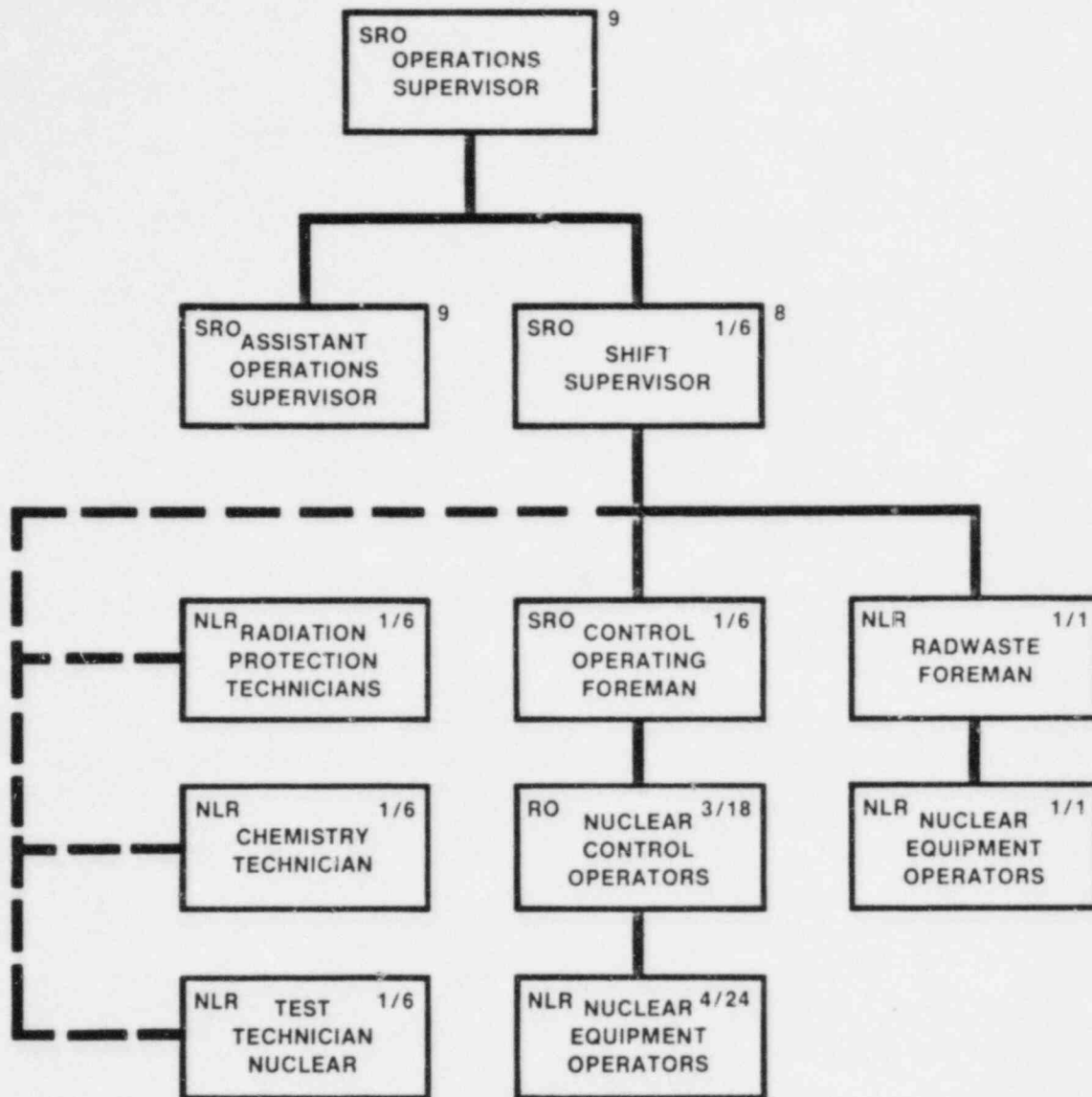


FIGURE 13.1-4

TECHNICAL SUPPORT
(OFFSITE)
RIVER BEND STATION — UNIT 1

RIVER BEND STATION
FINAL SAFETY ANALYSIS REPORT



NLR NO LICENSE REQUIRED

SRO SENIOR REACTOR OPERATOR

RO REACTOR OPERATOR

x/y NUMBER PER SHIFT/TOTAL STAFF

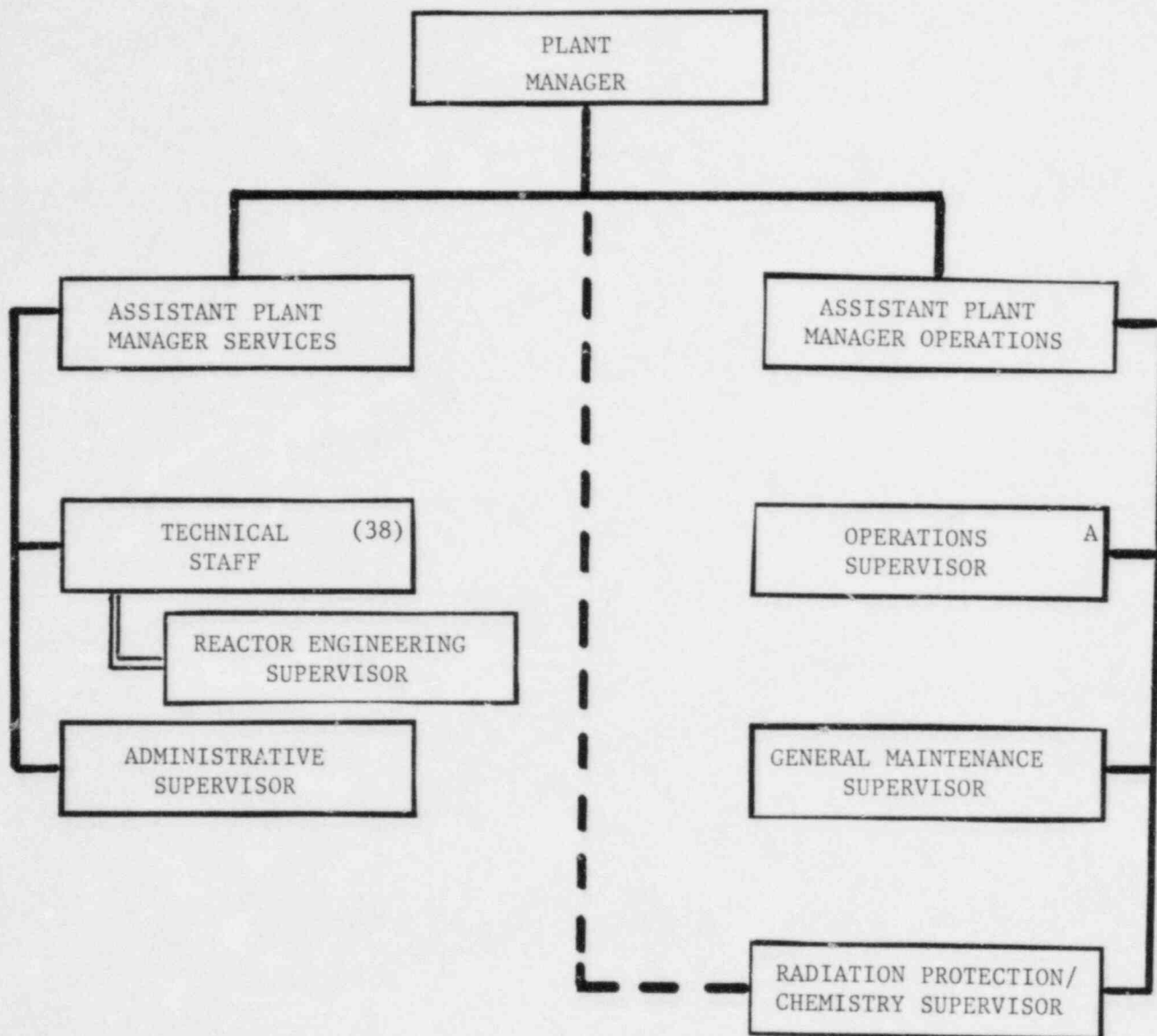
8 TRAINED TO A LEVEL EQUIVALENT TO A SHIFT TECHNICAL ADVISOR (STA)

9 NOT ON SHIFT; SHOWN FOR CLARITY ONLY

FIGURE 13.1-5

RIVER BEND SHIFT ORGANIZATION
RIVER BEND STATION -- UNIT 1

RIVER BEND STATION
FINAL SAFETY ANALYSIS REPORT



NOTES:

- A SEE FIGURE 13.1-5
- DIRECT ACCESS FOR RADIATION PROTECTION MATTERS
- (#) NUMBER OF TECHNICAL PERSONNEL ON STAFF
- == MEMBER OF THE TECHNICAL STAFF

FIGURE 13.1-6

PLANT OPERATIONS STRUCTURE
RIVER BEND STATION - UNIT 1

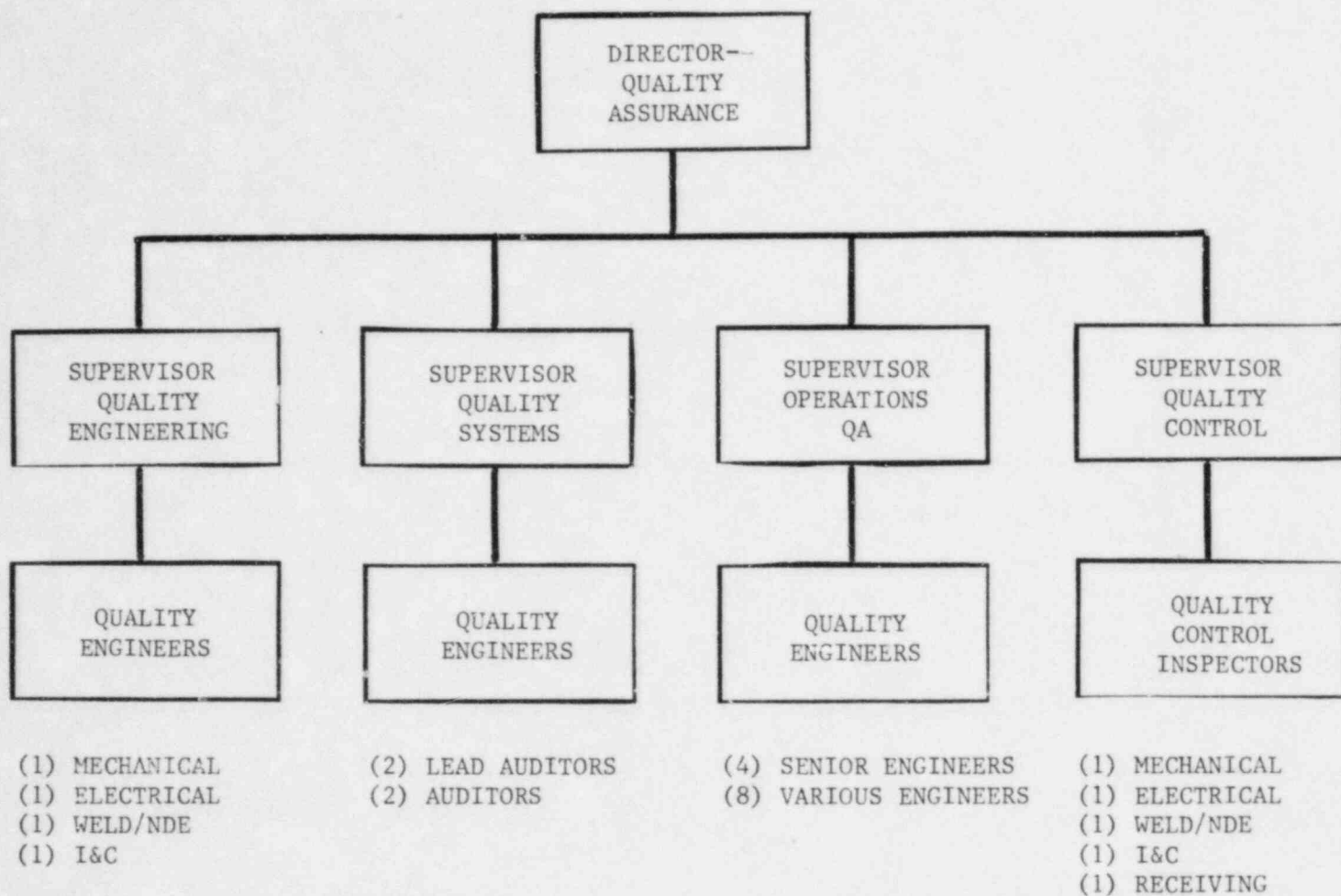


FIGURE 17.2-1
QUALITY ASSURANCE ORGANIZATION
RIVER BEND STATION - UNIT 1