

UNCONTROLLED COPY - FOR INFORMATION

ONLY

These documents for training purposes only. They are not controlled. They are not authorized for plant operation or maintenance use. Current revisions are available in Central File or Satellite files for use in Oper. or Maint. activities.

LTS-1000-35
Revision 0
February 9, 1984
1

FIRE DAMPER OPERABILITY TEST

A. PURPOSE

To test during each Unit 1 Refueling Outage (i.e. not every 18 months \pm 25%) the operability of a random sample of all fire dampers, except those that are both spring loaded and completely enclosed in ductwork.

B. REFERENCES

1. M-1300 and M-1400 series of drawings.
2. LTS-1000-36, "Fire Damper Visual Inspection".
3. FSAR, Figure 9.5-1, Fire Protection System.
4. FSAR, Table H.3-1, Safety-Related and Radioactive Equipment.
5. FSAR, Figure H.2-1, Fire Area/Zone Locations.
6. Unit 2 License Condition 2.C.15.h.
7. ANSI/ASQC Z.1.4-1981.

C. PREREQUISITES

1. Ensure there is an ample supply of Advanced Air "S" hooks and metal strappings and Ruskin "S" hooks.
2. Identify TEST INTERVAL from last surveillance and current surveillance on Attachment E.

D. PRECAUTIONS

1. Contact the Radiation Protection Department for information on radiation levels in areas where dampers will be operated.
2. Contact the Shift Engineer and Fire Marshal before operation of dampers.
3. A ladder or scaffolding may be needed to reach some of the fire dampers.

8403220127 840315
PDR ADOCK 05000373
F PDR

4. When operating fire dampers it may be necessary to shutdown the ventilation system to remove the access doors or gain access to the dampers. Refer to Attachment B concerning these dampers.
5. If the fire damper has a multi-leaf control damper located in front of it that is electro-hydraulic operated, the operator must be disconnected before reaching through the control damper to operate the fire damper.

E. LIMITATIONS AND ACTIONS

1. Any rejected fire damper must be brought to the attention of the Shift Engineer and Station Fire Marshal as soon as possible. Refer to Technical Specification 3.7.6 for required action. Figure 9.5-1 and Appendix H will need to be consulted for identification as a safety related fire barrier. In addition, perform LAP-900-23 (Fire Barriers, Fire Dampers, Fire Penetrations, and Fire Floor Plugs).
2. A total of 292 fire dampers exist in the plant. This includes fire dampers identified by Technical Specification 3/4.7.6, "Fire Rated Assemblies", and other fire dampers in the main plant proper in fire assemblies (areas such as the service building, relay house valve house, river screen house, etc. are excluded). Fire dampers installed in non-fire rated walls are not tested. In accordance with LaSalle County Station, Unit 2, Facility Operating License NPF-18, License Condition 2.C.15.h; and NUREG-0519 supplement No. 17, this procedure functionally tests only accessible dampers. Dampers are not required to be tested with air flow present based on human safety (in an enclosed space) and ALARA considerations due to potential for Airborne Radiation. Springloaded dampers enclosed in ductwork are not required to be tested because of human safety. These dampers are visually inspected every 18 months under a separate procedure. Springloaded dampers in open areas such as fire floors or walls shall be tested. The sample basis includes fire dampers in safety related fire assemblies as well as the balance of plant to ensure proper fire barriers in all plant areas.

F. PROCEDURE

1. Using Attachment A (30 lists of 222 random numbers) select the list corresponding to the surveillance. The first 16 numbers correspond to the dampers on Attachment B that will be checked. Attachment C shows the sampling intervals that will be used in the case that subsequent dampers must be checked. If the number of nonconforming dampers found in the first sample is equal to or less than the first acceptance number, the dampers are acceptable. If the number of nonconforming dampers in the first sample is equal to or greater than the first rejection number, all fire dampers must be tested. If the number of nonconforming units found in the first sample is between the first acceptance and rejection numbers, a second sample of eight shall be tested. This second sample is the 17th to 24th numbers on the random number list. The number of nonconforming units found in the first and second samples shall be accumulated. If the cumulative number of nonconforming units is equal to or less than the acceptance number, the dampers are acceptable. If the cumulative number of nonconforming units is equal to or greater than the second rejection number, all dampers must be tested. Continue in a similar manner until fire dampers are acceptable.
2. There are three types of dampers that will be operated: A. Advanced Air dampers with an "S" hook connecting the fusible link to the steel frame (Figure A); B. Advanced Air dampers that have a 3/8" wide metal strapping that holds the fusible link in place (Figure B); C. Ruskin dampers that have an "S" hook which holds the fusible link in place (similar to Figure A).
 - a. For the Advanced Air dampers with the "S" hook assembly, hold the damper as far back in the sleeve as it will go. There should be enough slack in the link connection to unclip the "S" hook. Take the "S" hook off, it should be replaced if inspection indicates excessive wear. Let go of the damper evenly to allow it to move forward. The damper has failed if it has not closed all the way or if it has not latched into the slots provided on the opposite end of where the damper was originally seated. (NOTE: Only horizontal dampers have the latch mechanism, vertical dampers do not.) Fold the damper up and insert the "S" hook.
 - b. The American Air dampers with the metal strapping are operated the same way. The metal strap is bent enough to release the link. The strap should be replaced if inspection indicates excessive wear.

- c. The Ruskin dampers have a very rigid link assembly. It will be necessary to use two pair of pliers to uncrimp the "S" hook. If the "S" hook is worn, it should be replaced. (NOTE: All Ruskin dampers, vertical and horizontal, have notches where the damper should secure after closing.)

NOTE

The fire dampers associated with a fire damper number may be more than one. Floor or wall dampers may be an individual damper or an assembly of individual dampers in series. All fire dampers should be tested.

CAUTION

If any damper has an ETL (Electro Thermal Link) (Figure C), it should be unhooked first. Extreme caution must be taken to insure that the electrical wire does not fall into the sleeve of the damper, it should also be verified that the fusible link is not in the way of the closing damper. Attachment D provides a signoff sheet to verify that this activity is performed when an ETL is operated.

3. Signoff on the Surveillance Log (Attachment B as each damper is tested).
4. Complete Test Evaluation on Attachment E and report completion to Surveillance Coordinator.

G. CHECKLISTS

1. Attachment B, Fire Damper Operability Surveillance Log.
2. Attachment D, ETL Safety Verification Log.

H. TECHNICAL SPECIFICATION REFERENCES

1. 3/4.7.6.1.

ATTACHMENT A SURVEILLANCE # 1

LTS-1000-35
Revision 0
February 9, 1984
5

INTEGERS 1-222 SELECTED RANDOMLY

218	111	99	30	192
40	156	23	52	189
187	71	46	159	
11	44	206	178	
68	200	63	18	
214	50	138	7	
141	185	196	33	
163	121	198	91	
66	85	134	175	
167	216	55	144	
97	2	26	151	
101	149	81	209	
87	193	139	186	
140	168	210	47	
42	125	61	189	
3	60	51	19	
9	46	34	147	
131	27	17	204	
194	191	117	215	
35	100	126	32	
145	227	197	53	
59	21	157	58	
64	174	170	179	
211	98	41	127	
154	15	164	54	
43	108	22	78	
114	53	217	15	
208	143	123	135	
130	137	25	126	
153	124	67	165	
4	160	88	74	
172	158	117	70	
14	44	169	52	
222	221	92	90	
7	75	20	177	
140	176	55	119	
29	110	210	49	
162	32	94	182	
173	148	38	116	
155	13	202	77	
104	115	136	183	
194	203	57	195	
129	142	17	102	
45	181	73	6	
133	146	1	103	
79	48	152	95	
75	213	149	113	
93	48	105	39	
12	80	212	109	
36	28	170	72	
15	47	132	118	
122	161	201	180	
51	60	171	220	
9	46	205	74	
120	166	105	112	

NAME / DATE

ATTACHMENT A SURVEILLANCE #2

LTS-1000-35
Revision 0
February 9, 1984
6

INTEGERS 1-222 SELECTED RANDOMLY

51	34	81	137	25
206	217	212	190	142
21	18	164	39	
178	140	199	5	
123	161	116	22	
158	58	12	136	
196	27	141	23	
108	112	50	82	
121	69	104	159	
111	124	90	87	
153	30	177	200	
95	83	132	11	
143	197	219	128	
135	75	50	134	
97	40	44	80	
172	198	208	185	
63	2	24	2	
75	42	13	13	
17	31	52	123	
122	33	113	126	
201	109	70	115	
3	88	176	220	
120	192	67	167	
156	93	205	14	
209	215	139	133	
170	102	149	119	
152	48	184	129	
186	54	204	45	
171	214	146	216	
1	118	89	7	
181	165	174	122	
16	43	155	114	
24	10	147	213	
85	26	191	218	
106	203	131	35	
170	99	1	110	
162	31	4	144	
160	180	193	105	
74	202	94	79	
28	37	56	77	
73	86	96	211	
101	125	93	14	
78	47	76	117	
20	195	145	130	
148	175	198	51	
179	151	59	15	
92	173	58	57	
187	154	157	58	
4	189	169	15	
107	150	207	56	
54	194	56	49	
65	163	187	71	
166	29	173	41	
127	32	52	72	
210	221	138	168	

NAME / DATE

ATTACHMENT A

SURVEILLANCE #3

LTS-1000-35
Revision 0
February 9, 1984
7

INTEGERS 1-222 SELECTED RANDOMLY

176	180	126	129
137	142	168	38
35	29	9	100
219	141	132	159
26	48	192	201
89	56	93	75
210	143	43	182
149	154	59	102
24	202	120	49
42	183	47	62
166	74	124	21
87	222	32	158
46	138	54	199
55	70	44	172
111	208	64	70
213	66	174	190
188	136	198	191
0	105	123	13
31	119	150	147
104	22	114	175
136	44	155	80
134	216	86	169
197	34	55	185
112	12	11	214
140	10	203	47
144	127	92	101
154	45	186	38
28	193	103	163
167	139	79	113
130	118	200	10
59	33	181	220
211	153	177	206
15	70	13	195
99	179	196	161
148	173	52	116
131	160	71	108
30	152	77	16
20	135	57	25
204	217	68	178
53	45	78	37
0	105	205	151
41	221	34	144
115	73	162	96
4	133	207	171
3	50	215	146
61	128	170	3
51	1	107	60
109	47	27	154
106	40	23	110
2	145	83	53
81	75	7	85
121	38	187	122
117	125	17	58
149	48	212	14
218	157	91	209

55
82

NAME / DATE

ATTACHMENT A
SURVEILLANCE #4
INTEGERS 1-222 SELECTED RANDOMLY

51	34	81	137
206	217	212	190
21	18	164	39
178	140	199	5
123	161	116	22
158	59	12	136
196	27	141	23
108	112	50	82
121	69	104	159
111	124	90	87
153	30	177	200
46	83	132	11
143	197	219	128
135	95	60	134
97	40	44	80
172	138	208	185
63	9	24	2
75	42	13	13
17	71	62	183
102	13	113	126
201	159	70	115
3	88	176	220
120	192	67	167
156	98	205	14
209	215	139	133
170	102	149	119
152	48	144	129
186	54	234	45
171	214	146	216
6	118	88	7
181	165	174	122
55	43	155	114
54	17	167	213
85	26	191	218
106	203	131	35
100	49	1	110
162	31	9	144
150	180	193	105
74	202	94	79
23	37	36	77
73	86	96	211
101	125	93	19
78	47	76	117
20	195	145	130
148	175	198	51
179	151	59	15
92	103	38	57
182	154	157	58
4	139	169	16
107	150	207	66
54	194	35	49
65	163	187	71
166	29	173	41
157	32	57	72
	201	128	168

25
142

NAME / DATE

ATTACHMENT A
SURVEILLANCE #5
INTEGERS 1-222 SELECTED RANDOMLY

LTS-1000-35
Revision 0
February 9, 1984
9

148
54
7
136
220
5
183
56
218
181
139
4
18
204
84
130
160
145
5
75
73
106
114
85
57
156
111
51
167
129
103
28
41
128
153
71
65
169
215
121
35
144
14
32
198
147
200
74
26
78
141
53
93
33

134
152
59
2
58
20
175
115
135
126
119
155
213
13
110
211
180
205
138
216
222
188
197
11
206
157
44
67
143
155
56
90
172
151
124
190
1
107
95
189
184
196
100
77
45
49
23
195
62
214
10
42
70
92

74
137
69
140
199
104
15
133
32
37
97
171
185
193
15
36
174
35
46
31
127
55
9
154
150
102
98
39
217
34
52
34
191
208
113
75
154
170
210
81
60
163
75
30
177
22
179
187
87
80
156
162
8
182

72
105
132
173
48
99
201
38
159
123
176
116
101
99
209
108
212
51
122
120
19
118
178
186
50
192
168
88
125
142
203
219
146
27
29
53
207
79
194
21
91
131
112
86
47
40
64
83
43
117
17
202
3
158
149

221
12

NAME / DATE

ATTACHMENT A
SURVEILLANCE #6
INTEGERS 1-222 SELECTED RANDOMLY

LTS-1000-35.
Revision 0
February 9, 1984
10

120
192
201
33
144
155
205
191
97
111
143
212
121
56
47
132
62
198
42
211
78
31
57
196
128
28
33
84
46
75
167
13
45
70
43
204
76
86
197
37
7
60
208
170
54
93
117
218
165
50
25
65

125
197
214
92
87
52
98
36
127
129
207
210
83
152
110
174
189
119
160
61
169
250
178
74
82
182
39
137
195
65
23
146
123
215
96
106
124
140
79
162
100
168
17
49
55
217
183
153
1
5
131
181

54
213
113
171
26
41
149
101
4
175
69
107
157
186
40
8
119
90
13
147
32
67
13
142
194
148
136
19
159
11
14
24
190
163
29
219
71
77
154
2
141
206
133
200
209
151
126
73
20
102
184
193
44

145
16
216
118
6
112
95
104
185
91
189
161
135
38
68
9
30
34
158
114
99
199
220
15
190
166
109
122
35
58
80
105
108
177
156
12
202
221
103
130
27
59
23
72
176
138
222
173
116
154
85
3
66

203
179

NAME / DATE

ATTACHMENT A
SURVEILLANCE # 7
INTEGERS 1-222 SELECTED RANDOMLY

LTS-1000-35
Revision 0
February 9, 1984
11

93	114	145	63
109	168	85	101
173	113	203	53
192	9	49	131
165	60	164	214
51	71	13	152
127	175	66	215
122	46	182	84
153	179	73	68
14	126	26	156
83	194	198	162
59	55	92	157
184	44	39	216
37	125	41	52
28	38	4	169
186	91	143	18
105	161	130	11
200	55	38	51
170	132	158	135
20	141	1	217
128	57	7	137
50	150	191	154
29	213	204	121
112	49	119	133
100	12	171	32
166	110	40	80
5	111	72	147
222	35	58	33
185	5	195	94
47	70	54	10
208	62	205	160
183	46	42	116
209	145	76	77
16	144	117	178
120	69	153	137
48	23	218	50
2	57	149	104
159	31	207	90
176	151	136	15
201	134	210	148
199	17	115	108
180	155	43	197
87	21	25	79
142	193	206	172
202	212	31	131
65	189	188	138
34	140	123	75
190	139	5	45
82	118	124	102
22	177	24	74
196	98	221	197
219	36	45	167
89	78	220	103
106	54	19	8
37	128	211	134

NAME DATE

ATTACHMENT A
SURVEILLANCE #8
INTEGERS 1-222 SELECTED RANDOMLY

LTS-1000-35
Revision 0
February 9, 1984
12

16	92	131	93
102	166	176	137
153	168	172	164
129	94	68	162
199	161	178	124
165	1	158	45
217	39	213	156
170	159	39	37
37	197	126	180
7	145	108	34
62	93	85	41
219	31	116	100
141	46	122	61
118	117	215	67
12	195	53	30
28	29	67	209
193	56	60	210
149	120	75	65
174	4	75	206
55	135	181	155
10	95	123	9
218	148	208	52
175	157	130	101
105	192	21	58
79	89	115	9
104	49	24	133
40	70	107	36
11	109	119	50
76	160	154	150
187	111	32	184
121	19	98	22
64	139	151	97
91	125	13	84
106	69	18	74
169	103	27	35
194	127	99	80
138	144	146	78
114	113	198	191
14	177	86	5
81	38	200	134
48	20	92	204
136	135	203	5
66	98	45	189
196	173	15	142
44	47	42	183
3	188	110	222
186	167	51	216
112	179	212	90
23	207	96	152
143	211	205	221
17	202	53	73
26	54	2	125
140	182	214	77
72	71	132	190
			147

220
171

NAME / DATE

ATTACHMENT A
SURVEILLANCE #9
INTEGERS 1-232 SELECTED RANDOMLY

LTS-1000-35
Revision 0
February 9, 1984
13

114	121	19	136
171	189	89	45
139	176	81	70
88	142	158	148
74	147	53	38
15	181	34	24
203	120	128	86
129	109	85	209
184	145	205	30
77	22	155	103
48	73	102	59
177	131	20	222
94	51	219	47
211	101	199	61
104	93	157	143
192	5	11	67
125	214	95	108
41	42	206	17
135	15	168	52
132	63	119	169
152	153	1	196
80	40	97	126
127	106	198	9
50	185	144	25
175	60	84	26
66	164	83	182
52	32	122	134
137	39	118	186
174	75	178	44
160	7	204	23
68	167	216	78
146	179	115	130
173	116	156	210
79	208	29	133
161	110	212	36
92	23	220	202
69	201	9	6
65	197	194	55
124	172	190	36
72	64	58	105
111	107	188	27
151	98	183	46
35	200	215	170
163	10	4	162
43	154	112	140
31	218	14	54
100	49	96	37
33	21	195	150
99	180	217	221
18	165	117	90
191	156	2	113
3	87	193	149
207	91	71	76
	12	187	138

159
213

NAME DATE

ATTACHMENT A
SURVEILLANCE #10
INTEGERS 1-222 SELECTED RANDOMLY

LTS-1000-35
Revision 0
February 9, 1984
14

183
158
97
185
144
221
162
4
31
63
7
53
164
197
68
195
27
93
222
46
95
32
119
161
24
159
207
160
118
67
137
132
151
176
8
147
50
2
158
51
93
169
131
215
191
11
29
211
19
57
78
88
177

218
36
110
39
128
105
190
95
103
142
90
148
87
102
61
28
65
130
150
89
203
25
33
104
14
155
166
196
194
125
48
141
200
10
129
55
75
80
154
113
214
21
112
123
41
156
55
49
126
199
116
13

46
114
182
117
157
32
20
108
12
115
81
47
149
216
79
167
35
72
43
153
74
187
171
136
29
143
206
188
63
184
155
202
146
34
59
26
201
38
37
5
100
98
18
54
64
107
210
175
168
170
77
44

139
205
122
217
111
219
179
94
193
52
124
220
17
1
86
101
192
5
16
3
109
180
45
140
209
189
22
178
62
15
152
76
3
40
133
91
135
172
42
212
121
198
84
204
208
134
129
174
96
106
79
71
151

23
173

NAME DATE

ATTACHMENT A
SURVEILLANCE #11
INTEGERS 1-222 SELECTED RANDOMLY

LTS-1000-35
Revision 0
February 9, 1984
15

155	135	56	131	138
74	9	185	96	197
69	79	31	73	
101	82	25	222	
116	140	58	193	
137	11	34	211	
134	45	39	98	
142	195	171	16	
3	142	215	169	
201	12	100	200	
191	75	132	22	
136	36	32	220	
114	62	209	181	
35	65	109	177	
206	18	145	61	
167	33	19	178	
166	37	47	107	
95	198	93	147	
146	102	43	148	
184	67	27	196	
204	120	212	24	
57	164	15	119	
190	6	125	144	
92	21	46	182	
78	208	159	105	
218	93	87	126	
76	111	91	150	
179	40	170	64	
77	42	71	1	
40	20	4	112	
110	39	5	50	
49	103	123	8	
104	117	157	152	
93	30	72	192	
202	149	118	122	
63	10	48	163	
23	28	173	59	
141	214	189	184	
55	52	175	2	
86	70	199	176	
153	85	17	106	
53	91	154	97	
187	186	14	161	
108	160	209	213	
205	84	127	51	
168	95	129	151	
183	128	210	139	
165	174	13	41	
158	26	121	7	
29	172	143	115	
217	89	40	188	
60	207	54	124	
94	203	180	68	
221	113	18	215	

NAME DATE

ATTACHMENT A SURVEILLANCE #12

INTEGERS 1-222 SELECTED RANDOMLY

LTS-1000-35
Revision 0
February 9, 1984
16

211
19
125
46
172
82
189
87
59
146
35
136
191
58
90
151
1
110
121
27
145
113
135
147
22
32
21
13
150
165
215
159
38
36
8
78
86
166
134
30
208
220
112
17
197
103
85
151
115
79
54
23
138
57
133

140
217
178
131
203
170
117
9
185
89
28
92
143
157
12
130
109
51
188
42
26
214
55
95
76
44
159
93
148
176
84
108
15
141
20
105
124
184
118
77
193
154
210
5
47
144
40
57
74
111
43
80
2
200
94

116
48
187
39
198
81
164
10
98
93
156
100
213
70
180
192
102
32
163
24
91
101
114
126
171
60
68
216
152
212
37
221
16
63
174
5
54
62
120
66
183
209
181
222
49
190
199
71
155
177
202
196
186
29
127

173
205
31
11
194
75
41
122
182
128
153
59
175
167
45
129
72
119
219
34
195
99
6
123
137
73
168
25
38
104
50
158
205
97
14
218
139
56
7
33
4
15
204
160
145
106
65
53
107
95
179
162
132
201
51

142
207

NAME DATE

ATTACHMENT A
SURVEILLANCE #13
INTEGERS 1-222 SELECTED RANDOMLY

LTS-1000-35
Revision 0
February 9, 1984
17

145
43
198
42
161
51
96
28
104
59
218
21
70
138
108
203
157
134
194
87
17
118
13
76
192
14
128
113
101
163
202
99
18
10
34
25
199
206
27
211
48
72
78
38
137
90
106
137
71
213
102
160
173

132
220
47
81
56
180
39
41
91
93
88
73
135
61
152
181
79
80
129
184
23
54
36
116
64
133
52
217
191
37
58
94
176
124
74
103
85
158
212
100
153
150
62
170
52
2
121
205
123
189
155
8
162

109
140
111
95
151
82
30
26
112
13
84
50
44
92
12
5
219
97
127
49
119
182
149
15
216
136
156
63
222
165
188
1
67
148
6
179
77
167
215
40
31
33
143
57
210
207
3
50
185
159
56
24
16

183
146
154
144
114
65
9
20
204
126
174
171
53
186
221
139
86
175
209
39
107
69
55
168
130
200
164
196
131
46
122
208
195
11
7
105
4
45
83
169
115
125
98
141
214
172
178
120
75
22
147
117
166

201
193

NAME / DATE

ATTACHMENT A
SURVEILLANCE #14
INTEGERS 1-222 SELECTED RANDOMLY

LTS-1000-33
Revision 0
February 9, 1984
18

86
88
111
4
47
131
176
45
156
215
21
94
67
128
77
179
98
179
107
49
125
218
99
93
22
92
58
201
110
91
132
40
53
145
133
54
44
41
204
97
211
83
7
11
135
182
3
58
72
172
71
120
213

123
210
58
151
124
43
164
59
119
25
117
103
190
118
17
65
143
135
131
209
202
79
101
53
91
23
5
178
146
139
95
208
89
82
167
173
113
130
52
24
70
205
94
127
159
6
15
137
148
29
220
48
138

144
2
177
75
191
171
74
114
150
136
46
122
61
173
140
35
195
55
115
55
55
39
90
121
87
154
157
129
158
106
207
196
150
100
62
73
187
194
189
78
198
142
28
19
112
37
170
156
163
149
96
80
152

219
199
14
169
20
31
131
116
206
180
32
85
158
57
212
30
143
131
51
217
50
60
1
8
105
174
192
66
134
200
194
13
153
102
214
125
27
222
215
36
134
221
183
155
9
42
53
54
185
12
162
203
76

147
18

NAME / DATE

ATTACHMENT A
SURVEILLANCE #15
INTEGERS 1-222 SELECTED RANDOMLY

LTS-1000-35
Revision 0
February 9, 1984
19

58	136	155	204
5	91	92	168
83	15	140	87
143	65	210	116
19	164	163	154
68	78	213	153
148	17	146	85
184	75	67	159
128	107	35	3
132	90	218	55
215	156	112	48
11	57	174	152
39	50	167	66
44	158	29	214
49	181	28	52
25	51	178	192
70	13	62	190
95	221	122	131
80	161	38	21
148	199	121	147
97	45	150	142
135	20	5	84
71	63	211	189
10	111	129	194
216	12	46	4
8	125	130	73
118	51	27	86
82	41	59	75
7	54	23	101
104	145	180	54
25	30	113	45
13	117	72	79
201	119	212	93
105	47	141	16
36	191	123	50
183	217	106	193
120	162	102	53
69	42	171	124
55	34	57	115
206	1	88	203
150	99	176	166
108	230	74	198
98	202	138	134
197	209	72	81
207	14	77	139
89	109	127	157
43	221	114	100
185	51	208	94
24	35	222	149
169	2	137	205
40	196	173	52
182	144	126	175
177	103	219	151
			135

165
195

NAME / DATE

ATTACHMENT A SURVEILLANCE #16

INTEGERS 1-222 SELECTED RANDOMLY.

LTS-1000-35
Revision 0
February 9, 1984
20

197	141	118	6
78	61	128	124
159	113	58	213
167	44	217	59
143	43	28	178
152	145	162	38
200	182	17	91
193	208	183	116
150	140	41	2
188	119	21	181
129	83	114	190
105	1	177	88
39	53	12	70
30	103	211	108
99	74	176	122
139	92	110	9
73	19	171	47
205	32	49	139
40	137	220	207
97	77	201	13
71	24	100	160
212	27	10	203
106	7	184	46
185	20	137	69
75	125	29	131
16	175	144	55
3	56	34	191
4	194	120	204
125	54	107	156
109	210	192	170
222	22	174	72
45	169	117	173
179	13	214	132
130	35	111	76
95	202	163	94
121	53	153	8
219	37	156	18
138	134	161	62
95	66	142	52
136	32	209	64
96	26	196	101
94	146	216	79
99	149	31	36
104	151	23	185
42	65	33	5
115	164	189	221
25	93	63	57
218	127	31	102
98	133	147	158
97	95	112	155
49	165	158	30
215	172	157	14
154	180	195	60
123	80	51	11

198
206

NAME DATE

ATTACHMENT A SURVEILLANCE #17

INTEGERS 1-222 SELECTED RANDOMLY.

LTS-1000-35 *
Revision 0
February 9, 1984
21

214	46	142	65
139	155	16	5
152	178	114	212
17	32	166	206
195	54	93	98
42	167	120	219
182	201	53	101
176	61	39	162
58	118	213	11
104	40	209	9
10	187	150	130
146	13	106	7
33	79	145	67
125	112	163	75
143	218	205	196
87	207	80	177
36	78	97	172
89	73	2	151
135	85	136	81
137	211	43	222
189	188	59	49
30	156	99	57
164	160	192	199
184	134	171	14
204	84	52	31
144	173	186	92
50	103	141	108
23	121	66	35
41	153	117	138
170	181	133	140
113	203	68	174
169	220	76	96
131	185	198	190
64	26	191	83
4	180	55	132
24	74	129	202
15	37	51	20
8	88	34	1
44	109	45	197
102	215	119	158
124	126	71	151
107	22	115	175
28	18	179	194
221	193	165	154
100	148	183	8
69	208	216	128
94	60	21	70
72	74	62	91
27	82	159	116
105	127	210	3
111	147	19	25
77	56	70	47
86	63	149	217

110
123

NAME / DATE

ATTACHMENT A SURVEILLANCE #18

LTS-1000-35
Revision 0
February 9, 1984
22

INTEGERS 1-222 SELECTED RANDOMLY

11
28
197
174
75
221
185
154
54
184
82
102
8
152
83
149
52
215
52
126
107
89
142
188
38
4
35
85
105
217
51
108
19
163
199
80
150
91
176
120
198
161
98
45
186
177
187
104
133
70
56
81
113
14

141
195
39
160
50
171
43
65
100
147
117
178
148
84
191
122
125
155
164
72
218
114
216
207
96
172
175
13
26
211
158
212
151
18
213
140
12
2
106
58
168
94
135
3
56
47
210
34
71
103
110
87
173
182

48
124
205
6
88
123
64
63
155
156
115
16
73
214
41
145
53
14
127
99
69
5
93
1
130
10
138
222
55
21
9
221
68
116
86
74
37
132
57
29
111
170
167
136
202
144
201
166
119
157
193
32
24
128

59
220
162
15
7
129
42
200
169
196
97
101
36
192
49
22
137
30
40
190
79
181
67
134
206
46
131
118
31
146
44
17
194
30
180
33
204
92
208
95
209
112
23
60
203
20
143
77
159
61
189
133
179
76

25
139

NAME DATE

ATTACHMENT A
SURVEILLANCE #19
INTEGERS 1-222 SELECTED RANDOMLY

LTS-1000-35
Revision 0
February 9, 1984
23-

74	59	152	192
52	49	24	47
2	119	21	166
121	182	41	17
173	149	191	196
87	56	16	213
205	15	161	131
134	160	64	108
199	68	55	46
123	216	62	122
189	187	190	206
155	136	203	208
27	156	180	195
8	63	176	194
162	222	183	11
142	165	146	7
197	188	154	105
52	1	144	4
109	217	129	45
54	67	80	101
140	148	114	83
43	202	96	79
18	6	10	169
71	128	78	115
177	179	65	125
111	58	9	113
95	198	220	75
151	51	20	25
181	104	212	37
82	72	204	135
106	77	116	98
30	167	153	141
28	215	126	214
26	40	174	158
36	31	42	172
112	55	171	178
38	133	53	163
15	143	150	85
94	57	186	120
132	70	118	23
84	210	221	75
50	137	139	19
44	103	90	99
170	184	85	22
92	95	51	147
12	207	175	91
34	3	218	117
5	50	204	156
73	185	39	138
88	124	107	157
219	159	59	29
211	66	55	39
97	100	168	110

48
102

NAME / DATE

ATTACHMENT A SURVEILLANCE #20

INTEGERS 1-222 SELECTED RANDOMLY

LTS-1000-35
Revision 0
February 9, 1984
24

191
57
249
198
202
5
113
105
135
73
42
127
70
79
139
157
10
22
131
128
135
144
31
135
219
12
11
90
85
155
120
35
158
38
125
75
13
45
17
124
172
52
6
143
49
30
92
174
75
157
180
200
20

13
48
82
193
109
89
136
14
9
58
175
218
90
201
174
33
93
170
74
55
51
59
215
221
135
112
183
62
21
148
151
214
187
179
159
205
209
154
119
39
211
192
32
103
216
129
75
220
184
2
97
15
111
173

66
153
5
145
81
204
182
55
60
175
206
210
208
135
25
106
212
222
54
41
132
107
29
139
152
35
117
91
53
71
190
147
25
74
118
177
130
115
152
110
69
150
9
203
51
50
34
55
104
158
108
102
83
145

151
217
43
213
134
133
134
99
47
189
100
35
44
142
141
146
84
125
197
38
171
122
98
121
24
73
207
72
150
131
114
57
7
15
139
37
137
48
123
140
23
178
87
133
115
64
1
13
45
101
95
40
27
138

196
188

NAME / DATE

ATTACHMENT A SURVEILLANCE #21

LTS-1000-35
Revision 0
February 9, 1984
25

INTEGERS 1-222 SELECTED RANDOMLY

157	29	31	164	156
125	76	178	104	146
135	105	144	78	
39	82	170	19	
37	152	163	25	
1	173	213	9	
27	148	193	23	
51	219	205	194	
54	95	118	172	
7	68	4	18	
85	121	134	101	
137	25	209	90	
190	198	179	207	
44	52	211	132	
15	91	12	108	
56	135	77	187	
102	106	47	117	
197	40	116	220	
57	95	142	136	
43	97	8	37	
113	85	55	50	
152	217	157	3	
29	218	141	222	
43	159	14	79	
139	36	45	107	
133	49	138	56	
126	175	123	17	
206	73	30	196	
15	186	210	89	
145	214	122	92	
198	111	177	161	
22	202	90	115	
53	253	49	41	
129	21	91	83	
165	58	127	24	
195	72	150	216	
201	153	221	59	
119	51	110	93	
149	176	171	50	
190	59	199	151	
88	11	38	215	
55	32	195	120	
150	166	54	200	
134	174	158	184	
52	128	5	130	
6	75	24	191	
189	124	40	10	
94	70	74	71	
20	53	192	54	
208	131	212	143	
103	168	140	132	
2	33	112	13	
64	114	204	181	
53		147	193	

NAME / DATE

ATTACHMENT A SURVEILLANCE #22

LTS-1000-35
Revision 0
February 9, 1984
26

INTEGERS 1-222 SELECTED RANDOMLY

186	38	76	139
202	133	109	119
112	142	115	167
98	7	77	6
155	102	9	52
179	35	157	167
29	89	221	199
44	127	36	71
136	93	158	161
108	215	47	123
2	144	190	220
60	168	178	138
31	64	40	185
87	114	80	33
189	20	84	207
45	195	18	188
131	8	107	181
197	175	14	149
137	1	48	105
69	120	156	49
203	113	194	191
68	200	128	74
41	25	126	218
213	164	85	217
152	10	125	34
11	160	143	206
162	110	153	55
118	23	166	122
46	135	17	66
12	56	65	184
13	140	154	176
101	22	95	212
177	174	24	208
58	147	83	129
219	111	73	88
39	145	43	32
170	169	183	146
134	27	57	104
72	51	116	53
28	173	85	121
94	81	42	54
4	172	3	148
136	209	222	204
165	63	67	192
19	210	26	91
99	198	96	201
106	100	132	163
153	148	75	117
15	180	21	59
182	79	193	30
205	57	150	159
150	70	90	62
5	214	92	61
			171

211
76

NAME DATE

ATTACHMENT A
SURVEILLANCE #23
INTEGERS 1-222. SELECTED RANDOMLY

139	34	179	165	105
206	92	146	79	9
132	63	84	140	
68	126	212	52	
132	104	127	2	
65	19	125	23	
35	119	130	210	
204	13	93	205	
156	168	197	145	
117	108	38	178	
94	102	171	96	
91	219	122	187	
53	83	98	200	
71	209	121	61	
82	198	12	164	
170	103	199	97	
30	81	106	45	
11	136	85	132	
147	214	49	153	
26	194	48	115	
74	36	70	64	
118	202	218	1	
177	182	24	28	
130	77	157	215	
195	66	111	31	
116	90	220	3	
133	175	107	22	
184	151	149	30	
33	217	73	46	
6	43	207	101	
38	213	72	165	
162	134	150	20	
110	133	222	95	
191	167	113	4	
69	154	193	39	
160	221	54	40	
25	75	131	27	
174	144	42	138	
59	99	114	172	
32	143	57	155	
16	89	21	41	
151	47	7	18	
62	189	15	97	
156	56	17	216	
124	100	76	10	
55	5	29	163	
8	148	173	58	
169	85	154	170	
203	129	37	186	
51	201	137	181	
192	176	211	57	
120	44	135	188	
	142	68	158	

NAME / DATE

ATTACHMENT A
SURVEILLANCE #24
INTEGERS 1-222

LTS-1000-35
Revision 0
February 9, 1984
28

SELECTED RANDOMLY

22	5	164	31	220
39	45	211	119	35
58	129	140	176	
11	57	187	56	
30	200	216	156	
208	150	51	12	
1	125	62	99	
46	198	37	141	
175	193	207	160	
104	91	179	16	
63	26	10	110	
168	135	137	50	
206	39	77	88	
90	40	153	149	
37	27	44	47	
159	209	217	116	
83	19	153	151	
55	143	197	185	
121	146	106	29	
81	167	107	37	
199	18	58	35	
127	24	210	157	
34	148	64	53	
94	112	184	215	
108	138	75	199	
21	172	103	130	
174	145	222	136	
101	196	48	120	
61	79	132	134	
32	155	169	96	
221	213	183	219	
55	2	162	76	
201	41	170	5	
78	154	122	109	
118	28	55	25	
139	15	53	178	
92	126	17	161	
70	133	186	114	
73	144	13	111	
165	18	181	190	
20	54	142	177	
95	74	57	128	
202	90	33	35	
171	38	52	203	
8	69	102	50	
192	199	72	152	
141	166	94	205	
42	49	7	155	
3	43	115	180	
218	173	23	204	
52	117	98	9	
212	131	100	192	
4	97	123	195	
121		188	71	

NAME / DATE

ATTACHMENT A
SURVEILLANCE #25
INTEGERS 1-222

LTS-1000-35
Revision 0
February 9, 1984
29

SELECTED RANDOMLY

123
160
207
897
93
166
72
179
118
221
170
48
4
3
173
32
39
186
189
31
175
11
199
191
17
154
14
167
116
215
27
209
35
23
159
127
129
210
13
92
121
140
130
132
194
108
142
49
76
143
85
25
183

55
54
180
60
206
38
198
84
66
156
5
136
19
131
79
96
15
73
208
63
185
9
26
29
222
44
193
6
211
88
134
75
35
74
16
81
28
169
45
21
174
58
18
164
200
22
220
181
177
203
87
155
61

83
204
107
39
100
147
114
153
67
172
113
148
196
24
65
33
47
119
52
144
141
135
182
105
128
43
126
102
150
201
64
69
1
212
165
152
10
112
190
42
117
219
50
8
152
77
89
109
192
122
163
59
184

120
2
176
202
34
106
97
158
71
46
125
91
161
56
213
12
110
111
70
62
146
57
51
151
139
98
78
145
41
158
7
171
40
195
205
149
115
188
124
101
53
214
68
216
217
137
133
74
187
30
104
90
138

103
66

NAME DATE

ATTACHMENT A
SURVEILLANCE #26
INTEGERS 1-222

SELECTED RANDOMLY

LTS-1000-35
Revision 0
February 9, 1984
30

184
177
208
7
79
100
18
9
124
133
31
14
153
38
95
136
89
110
212
194
57
55
173
182
28
216
56
145
190
130
185
70
220
83
78
77
107
87
131
205
85
123
109
121
94
53
50
179
88
160
80
61
15
19

198
75
176
13
122
202
150
104
73
74
141
91
76
207
27
22
171
72
134
63
217
92
138
151
21
168
32
178
67
11
33
112
128
117
39
215
2
219
69
82
144
57
143
148
175
84
116
47
30
113
97
105
157
172

181
190
210
132
197
155
183
51
126
209
23
221
159
125
140
193
111
153
132
152
138
25
101
155
213
174
1
90
45
50
137
149
12
52
152
44
86
154
42
16
5
135
56
34
187
115
201
129
99
146
120
203
49
35

195
170
191
127
43
52
192
189
3
17
8
103
40
204
54
81
71
98
24
46
218
96
186
64
6
151
158
20
169
58
167
35
29
41
158
166
106
35
199
26
206
59
214
48
139
147
63
200
48
142
119
222
154
4

118
196

NAME / DATE

ATTACHMENT A SURVEILLANCE # 27

LTS-1000-35
Revision 0
February 9, 1984
31

INTEGERS 1-222 SELECTED RANDOMLY

164	187	209	63	124
36	195	19	17	35
202	31	143	186	
127	59	146	181	
190	177	167	142	
73	88	14	87	
97	3	148	33	
222	22	112	52	
15	11	138	72	
220	30	172	7	
211	208	145	98	
80	45	196	100	
85	175	79	123	
131	168	155	188	
58	206	213	158	
76	159	2	119	
122	93	41	176	
180	56	134	156	
117	121	126	12	
104	41	133	160	
147	54	18	50	
75	84	74	47	
150	21	90	116	
132	174	69	151	
24	101	199	185	
191	61	166	29	
153	32	49	93	
99	66	43	157	
16	201	173	53	
221	78	47	189	
207	118	214	130	
54	139	113	136	
144	70	216	120	
55	165	51	134	
115	20	62	96	
13	95	57	219	
54	8	179	75	
171	192	10	5	
140	141	157	109	
102	218	77	25	
149	82	163	178	
107	212	44	161	
1	4	217	114	
108	89	197	111	
110	5	136	128	
42	129	58	85	
56	57	210	203	
34	200	194	50	
194	125	133	152	
38	198	48	205	
23	91	189	105	
28	135	183	204	
92	39	162	9	
215	40	170	132	

NAME DATE

ATTACHMENT A SURVEILLANCE #28

INTEGERS 1-222 SELECTED RANDOMLY

37	17	207	154	138
136	140	35	95	197
171	211	33	77	
155	55	180	12	
194	117	168	114	
121	74	162	13	
1	158	40	135	
160	97	23	110	
79	98	44	156	
195	127	132	130	
144	7	82	100	
134	159	101	174	
90	113	78	212	
72	48	29	164	
57	55	28	20	
111	90	7	103	
192	57	66	104	
55	198	203	179	
109	51	147	45	
42	91	189	51	
133	176	165	46	
6	145	18	105	
122	193	34	163	
143	133	196	58	
108	85	92	129	
161	217	53	142	
128	208	174	24	
119	3	177	106	
88	57	71	26	
116	2	184	43	
41	120	137	17	
213	182	27	32	
188	54	203	191	
183	157	150	36	
199	58	152	205	
125	15	115	49	
200	83	32	5	
204	166	19	75	
220	14	47	141	
62	149	112	215	
31	202	118	201	
54	50	15	126	
172	167	5	218	
16	21	60	190	
11	30	151	51	
52	178	169	70	
170	39	94	27	
73	102	175	186	
148	210	74	206	
139	123	187	213	
75	221	107	135	
216	222	56	86	
89	146	96	26	

NAME / DATE

ATTACHMENT A

SURVEILLANCE #29

INTEGERS 1-222 SELECTED RANDOMLY

182	137	215	222	
73	61	185	170	116
44	156	190	59	123
179	69	63	10	
147	33	126	146	
56	151	151	143	
91	79	6	30	
85	130	119	164	
75	202	133	204	
188	173	47	50	
139	18	95	23	
163	183	212	170	
87	124	55	113	
70	114	205	102	
216	221	160	80	
131	211	105	46	
140	76	208	201	
141	20	214	112	
10	8	209	215	
62		124	78	
135	109	38	121	
111	106	153	98	
220	127	48	22	
13	145	138	60	
6	77	168	74	
40	24	29	92	
104	54	196	206	
177	98	157	166	
37	15	197	120	
34	210	125	33	
142	126	107	39	
134	148	4	213	
122	117	27	150	
100	12	55	43	
83	138	28	59	
171	189	39	48	
192	26	167	198	
186	37	118	135	
24	193	178	51	
152	92	106	21	
187	169	207	159	
11	97	52	20	
71	80	144	149	
17	184	181	200	
42	57	165	101	
7	203	25	162	
19	172	72	67	
180	1	115	31	
175	141	127	14	
110	4	93	31	
54	136	49	174	
195	199	34	96	
56	103	217	132	

NAME / DATE

ATTACHMENT A SURVEILLANCE #30

LTS-1000-35
Revision 0
February 9, 1984
34

INTEGERS 1-222 SELECTED RANDOMLY

166	30	131	97	20
77	187	191	90	220
212	104	19	159	
43	115	63	72	
33	157	76	57	
163	151	181	69	
149	75	120	98	
5	8	112	134	
153	132	170	217	
122	22	145	222	
152	215	138	41	
209	111	27	96	
104	198	78	70	
13	96	35	21	
125	137	3	140	
102	206	200	218	
32	185	12	165	
192	49	179	53	
148	35	203	15	
130	155	152	127	
106	23	202	178	
34	32	93	213	
50	151	84	74	
124	183	219	186	
201	59	23	31	
221	171	37	136	
98	167	121	56	
58	123	79	188	
45	133	117	47	
100	55	159	150	
110	53	135	154	
127	42	89	105	
133	81	2	54	
128	141	194	72	
175	29	176	5	
35	144	195	1	
101	73	46	103	
193	160	207	39	
154	38	11	177	
48	214	68	40	
27	48	10	4	
199	57	127	7	
149	45	35	9	
145	116	142	41	
190	70	216	23	
182	16	209	24	
26	42	55	92	
204	54	129	174	
14	139	91	156	
173	109	17	210	
125	158	114	205	
211	158	25	118	
51	147	119	113	
	143	172	52	
		194		

NAME / DATE

ATTACHMENT B

	FIRE DAMPERS	LOCATION	DOES VENTILATION SYSTEM NEED TO BE TURNED OFF?	SAT/INOP.	INT/DATE	CORRECTIVE ACTION TAKEN
1	OVA27Y	1390-1 N.2-11.5 768 AB				
2	OVA30Y	1390-1 N.2-11.5 768 AB				
3	OVA34Y	1391-1 N.6-17.5 768 AB				
4	OVA35Y	1391-1 R-17.9 768 AB				
5	OVA38Y	1391-1 N.8-16.1 768 AB				
6	OVA39Y	1391-1 N.9-17.4 768 AB				
7	OVA40Y	1391-1 N.6-17.9 768 AB				
8	OVA41Y	1391-1 N.6-17.9 768 AB				
9	OVC37Y	1391-1 N.6-16 768 AB				
10	OVC38Y	1391-1 N.6-16 768 AB				

DOCUMENT ID 0031T/

DOCUMENT ID 0031T/

ATTACHMENT B

	FIRE DAMPERS	LOCATION	DOES VENTILATION SYSTEM NEED TO BE TURNED OFF?	SAT/INOP.	INT/DATE	CORRECTIVE ACTION TAKEN
11	OVC39Y	1391-1 R-16.1 768 AB				
12	OVC46Y	1391-1 N.7-16.2 768 AB				
13	OVC47Y	1391-1 N.7-16.4 768 AB				
14	OVC49Y	1391-1 N.7-15.8 768 AB				
15	OVC50Y	1391-1 N.2-16.7 768 AB				
16	OVC51Y	1391-1 N.2-16.9 768 AB				
17	OVC67Y	1390-1 J.8-13.2 768 AB				
18	OVC69Y	1391-1 J.8-16.8 768 AB				
(See Attachment D) 19	OVD04Y	1397 G.2-7.3 710 DG				
(See Attachment D) 20	OVD05Y	1397 F.8-7.3 710 DG				

DOCUMENT ID 00317/

ATTACHMENT B

FIRE DAMPERS		LOCATION	DOES VENTILATION SYSTEM NEED TO BE TURNED OFF?	SAT/INOP.	INT/DATE	CORRECTIVE ACTION TAKEN
21	OVD07Y	1397 G.2-6.6 710 DG				
(See Attachment D)		1397				
22	OVD41Y	G.1-6.2 710 DG				
23	OVR22Y	1390-1 N.7-14.6 768 AB				
24	OVR23Y	1390-1 N.5-14.0 768 AB				
25	OVR24Y	1390-1 N.7-14.0 768 AB				
26	OVR25Y	1390-1 N.5-14.6 768 AB				
27	OVR35Y	1389-1 L.3-13 731 AB				
28	OVR36Y	1389-1 L.6-13 731 AB				
29	OVR37Y	1389-1 J.7-13.8 731 AB				
30	OVR38Y	1389-1 L.6-13.8 731 AB				

DOCUMENT ID 003117

ATTACHMENT B

FIRE DAMPERS		LOCATION	DOES VENTILATION SYSTEM NEED TO BE TURNED OFF?	SAT/INOP.	INT/DATE	CORRECTIVE ACTION TAKEN
31	OVR39Y	1389-2 J.1-19.3 731 AB				
32	OVR41Y	1389-2 L.7-17 731 AB				
33	OVR42Y	1389-2 L.7-17 731 AB				
34	OVR43Y	1377-1 J.2-10.6 786 AB				
35	OVR44Y	1377-1 J.2-10.6 786 AB				
36	OVR45Y	1377-3 J.2-19.4 786 AB				
37	OVR46Y	1377-3 J.1-19.4 786 AB				
38	OVR47Y	1390-1 M.3-15 768 AB				
39	OVR48Y	1390-1 M.3-15 768 AB				
40	OVR49Y	1389-2 L.3-16.9 731 AB				

DOCUMENT ID 0031T/

DC 0031T/

LTS-1000-35
Revision 0
February 9, 1984
39

ATTACHMENT B

DOES VENTILATION
SYSTEM NEED TO
BE TURNED OFF?

CORRECTIVE
ACTION TAKEN

INT/DATE

SAT/INOP.

LOCATION

FIRE DAMPERS

41	OVE50Y	1389-2 L.9-16	731 AB			
42	OVE51Y	1389-2 L.8-17.3	731 AB			
43	OVE53Y	1389-2 L.8-17.3	731 AB			
44	OVH11Y	1441	714 LSH			
45	OVH15Y	1441	714 LSH			
46	OVL28Y	1388-1 M-14.8	710 AB			
47	OVL29Y	1388-1 M-14.8	710 AB			
48	OVL30Y	1388-1 M.8-14.8	710 AB			
49	OVL31Y	1388-1 M.8-14.8	710 AB			
50	OVL48Y	1388-1 M-14.8	710 AB			

DOCUMENT ID 0031T/

ATTACHMENT B

FIRE DAMPERS		LOCATION	DOES VENTILATION SYSTEM NEED TO BE TURNED OFF?	SAT/INOP.	INT/DATE	CORRECTIVE ACTION TAKEN
51	OVL50Y	1388-1 N.8-14.9 710 AB				
52	OVL51Y	1388-1 N-14.9 710 AB				
53	OVL52Y	1388-2 N.5-16.0 710 AB				
54	OVL53Y	1388-2 N.5-16.0 710 AB				
55	OVL54Y	1388-2 N.5-16.1 710 AB				
56	OVL57Y	1388-2 N.1-15.7 710 AB				
57	OVL58Y	1388-2 N.1-15.7 710 AB				
58	OVL62Y	1388-2 L.8-15.9 710 AB				
59	OVL63Y	1377-2 N.6-15.6 786 AB				
60	OVL69Y	1388-6 N.1-15.7 710 AB				

DOCUMENT ID 00317/

DOCUMENT 00317/

LTS-1000-35
Revision 0
February 9, 1984
41

ATTACHMENT B

FIRE DAMPERS	LOCATION	DOES VENTILATION SYSTEM NEED TO BE TURNED OFF?		SAT/INOP.	INT/DATE	CORRECTIVE ACTION TAKEN
61 OVL71YA	1388-6 W-15.2 710 AB					
62 OVL71YB	1388-6 W-15.7 710 AB					
63 OVS151Y	1390-1 W.5-14.6 768 AB					
64 OVS152Y	1390-1 W.4-14.6 768 AB					
65 OVS160Y	1389-1 W.4-13.7 731 AB					
66 OVS161Y	1389-1 W.9-14.3 731 AB					
67 OVS163Y	1389-1 W.7-14.2 731 AB					
68 OVW31Y	1390-1 W.5-12 768 AB					
69 OVW32Y	1390-1 W.7-12 768 AB					
70 OVW06Y	1413 W.5-14.4 754 TB	YES				

DOCUMENT ID 0031T/

DOC IT 1 031T

ATTACHMENT B

	FIRE DAMPERS	LOCATION	DORS VENTILATION SYSTEM NEED TO BE TURNED OFF?	SAT/INOP.	INT/DATE	CORRECTIVE ACTION TAKEN
71	OVW11Y	1435 YA-14.6 710 RW				
72	OVW30Y	1435 YA.5-14.6 710 RW				
73	OVW32Y	1413 Y-12.9 754 TB	YES			
74	OVW42Y	1432-2 Y-13.1 687 TB				
75	OVW47Y	1435 YA.2-14.6 710 RW				
76	OVW50Y	1435 YA-12.2 710 RW				
77	OVW78Y	1432-2 WC-14.8 687 TB	YES			
78	OVW89Y	1429 Y-13.7 777 RW				
79	OVW90YA	1429 Y-13.3 777 RW				
80	OVW90YB	1429 Y-13.3 777 RW				

DOCUMENT ID 0031T/

ATTACHMENT B

FIRE DAMPERS		LOCATION	DOES VENTILATION SYSTEM NEED TO BE TURNED OFF?	SAT/INOP.	INT/DATE	CORRECTIVE ACTION TAKEN
81	0VW90YC	1429 Y-13.5 777 RW				
82	0VW90YD	1429 Y-13.3 777 RW				
83	0VW90YE	1429 Y-13.5 777 RW				
84	0VW90YF	1429 Y-13.3 777 RW				
(See Attachment D)		1397				
85	1VD04Y	H.2-7.1 710 DG				
(See Attachment D)		1397				
86	1VD05Y	L.1-7.7 710 DG				
(See Attachment D)		1397				
87	1VD07Y	H.1-6.2 710 DG				
(See Attachment D)		1397				
88	1VD12Y	G.7-7.3 710 DG				
(See Attachment D)		1397				
89	1VD13Y	J.3-7.5 710 DG				
(See Attachment D)		1397				
90	1VD15Y	G.7-6.6 710 DG				

DOCUMENT ID 0031T/

DOCUMENT 0031T/

ATTACHMENT B

	FIRE DAMPERS	LOCATION	DOES VENTILATION SYSTEM NEED TO BE TURNED OFF?	SAT/INOP.	INT/DATE	CORRECTIVE ACTION TAKEN
91	1VD20Y	1437 L.3-9 687				
92	1VD21Y	1437 J.2-9.8 887				
93	1VD23Y	1399 L.3-8.9 674 DG				
94	1VD24Y	1399 L.2-8.9 674 DG				
(See Attachment D)		1397				
95	1VD44Y	G.9-6.2 710 DG				
96	1VR76Y	1351-1 G.9-15.9 843 RB				
97	1VR77Y	1351-1 G.6-15.9 843 RB				
98	1VT22Y	1414 X.3-11.2 731 TB				
99	1VT29Y	1414 X.5-11 731 TB				
100	1VT35Y	1414 V.8-13.5 731 TB				

DOCUMENT ID 0031T/

DOCUMENT 0031T/

ATTACHMENT B

FIRE DAMPERS	LOCATION	DOES VENTILATION SYSTEM NEED TO BE TURNED OFF?	SAT/INOP.	INT/DATE	CORRECTIVE ACTION TAKEN
101 1VT36Y	1414 R.2-13.5 731 TB				
102 1VT41Y	1438 R-16.5 687 TB				
103 1VT44Y	1438 V.5-14 710 TB				
104 1VT46Y	1418-1 V.1-11 687 TB				
105 1VT52Y	1420 R-14 768 TB	YES			
106 1VT53Y	1387-2 R-14.6 749 AB				
107 1VT55Y	1389-1 N.9-13.9 731 AB				
108 1VT59YA	1389-1 R-9 731 AB				
109 1VT59YB	1389-1 R-10.2 731 AB				
110 1VT59YC	1389-1 R-11.2 731 AB				

DOCUMENT ID 0031T/

ATTACHMENT B

FIRE DAMPERS	LOCATION	DOES VENTILATION SYSTEM NEED TO BE TURNED OFF?	SAT/INOP.	INT/DATE	CORRECTIVE ACTION TAKEN
111 1VT59YD	1389-1 R-12.8 731 AB				
112 1VT60YA	1387-1 W.9-11.1 749 AB				
113 1VT60YB	1387-1 W.9-12.2 749 AB				
114 1VT61Y	1411-1 R-14.8 768 TB	YES			
115 1VT62Y	1411-1 R-14.2 768 TB	YES			
116 1VT69Y	1418-1 U-13.2 687 TB				
117 1VT72Y	1416 W.4-14.2 710 TB				
118 1VT73Y	1416 W.4-14.2 710 TB				
119 1VT76Y	1414 W.4-4.8 731 TB				
120 1VT80Y	1421 W.5-15.2 786 TB				

DOCUMENT ID 0031T/

DOCUMENT 0031T/

ATTACHMENT B

FIRE DAMPERS	LOCATION	DOES VENTILATION SYSTEM NEED TO BE TURNED OFF?	SAT/INOP.	INT/DATE	CORRECTIVE ACTION TAKEN
121 1VT81Y	1421 W-14.6 786 TB				
122 1VV06Y	1379-1 M.9-15 801 AB				
123 1VV07Y	1387-1 E-13.6 749 AB				
124 1VV08Y	1390-1 W.2-11.8 768 AB				
125 1VX01Y	1387-1 J.1-10.6 749 AB				
126 1VX05Y	1387-1 J.5-9.2 749 AB				
127 1VX06Y	1389-1 J.1-10.6 731 AB				
128 1VX15Y	1381-1 J-9 842 AB				
129 1VX28YA	1375-1 9.2-J.3 815 AB	YES			
130 1VX28YB	1375-1 9.2-J.3 815 AB	YES			

DOCUMENT ID 0031T/

ATTACHMENT B

FIRE DAMPERS	LOCATION	DOES VENTILATION SYSTEM NEED TO BE TURNED OFF?	SAT/INOP.	INT/DATE	CORRECTIVE ACTION TAKEN
131 1VX29YA	1375-1 10.3-J.2 015 AB	YES			
132 1VS29YB	1375-1 10.7-J.1 015 AB	YES			
133 1VX30Y	1388-1 J.3-10.2 710 AB				
134 1VX31Y	1388-1 J.5-9 710 AB				
135 1VX32Y	1388-1 L.3-12.8 710 AB				
136 1VX33Y	1388-1 N-12.3 710 AB				
137 1VX34Y	1389-1 L.9-12.6 731 AB				
138 1VX35Y	1389-1 L.3-13 731 AB				
139 1VX36Y	1387-1 L.9-10.3 749 AB				
140 1VX37Y	1387-1 L.9-10.9 749 AB				

DOCUMENT ID 0031T/

DOCUMENT ID 0031T/

ATTACHMENT B

FIRE DAMPERS		LOCATION	DOES VENTILATION SYSTEM NEED TO BE TURNED OFF?	SAT/INOP.	INT/DATE	CORRECTIVE ACTION TAKEN
141	1VX38Y	1387-1 L.7-12.3 749 AB				
142	1VX39Y	1387-1 L.7-12.3 749 AB				
143	1VX41Y	1387-1 L.6-12.6 749 AB				
144	1VX42Y	1387-1 L.1-13 749 AB				
145	1VX43Y	1387-1 L.5-12.7 749 AB				
146	1VX44Y	1387-1 L.3-15 749 AB				
147	1VX46Y	1387-1 J.3-14.9 749 AB				
148	1VX52Y	1388-1 N-11.3 710 AB				
149	1VX54Y	1389-1 N-10.3 731 AB				
150	1VX56Y	1387-1 N-11.3 749 AB				

DOCUMENT ID 0031T/

DOCUMENT ID 0031T/

ATTACHMENT B

FIRE DAMPERS	LOCATION	DOES VENTILATION SYSTEM NEED TO BE TURNED OFF?	SAT/INOP.	INT/DATE	CORRECTIVE ACTION TAKEN
151 1VX58Y	1389-1 J.1-13.2 731 AB				
152 1VX59Y	1388-1 N.5-9 710 AB				
153 1VY10Y	1379-1 15.7-N 631 AB				
(See Attachment D) 154 2VD04Y	1398 N.6-23.2 710 DG				
(See Attachment D) 155 2VD05Y	1398 L.1-22.4 710 DG				
156 2VD07Y	1398 N.1-23.9 710 DG				
(See Attachment D) 157 2VD12Y	1398 E.3-23.2 710 DG				
(See Attachment D) 158 2VD13Y	1398 L.9-22.4 710 DG				
159 2VD15Y	1398 E.3-23.9 710 DG				
160 2VD20Y	1438 J.6-20.4 687 TB				

DOCUMENT ID 0031T/

ATTACHMENT B

FIRE DAMPERS	LOCATION	DOES VENTILATION SYSTEM NEED TO BE TURNED OFF?	SAT/INOP.	INT/DATE	CORRECTIVE ACTION TAKEN
161 2VD21Y	1438 J.5-20.6 687 TB				
162 2VD23Y	1400 L.4-21 674 DG				
163 2VD24Y	1400 L.1-21 674 DG				
(See Attachment D) 164 2VD40Y	1396 L.7-22.5 736 DG				
165 2VR76Y	1352-2 G.9-15.9 843 RB				
166 2VR77Y	1352-2 G.6-15.9 843 RB				
167 2VI22Y	1415-1 X.7-18.8 731 TB				
168 2VI29Y	1415-1 X.9-19 731 TB				
169 2VI35Y	1415-1 W.7-16.5 731 TB				
170 2VI36Y	1415-1 R.1-16.5 731 TB				

DOCUMENT ID 0031T/

D-ENT 0031T/

ATTACHMENT B

FIRE DAMPERS	LOCATION	DOES VENTILATION SYSTEM NEED TO BE TURNED OFF?	SAT/INOP.	INT/DATE	CORRECTIVE ACTION TAKEN
171 2VT44Y	1416 W.8-19 710 TB				
172 2VT46Y	1418-2 W.2-19 687 TB	YES			
173 2VT52Y	1422 R-16 768 TB	YES			
174 2VT53Y	1387-2 R-15.6 749 AB				
175 2VT55Y	1389-2 R-16.1 731 AB				
176 2VT59YA	1389-2 W.9-20.8 731 AB				
177 2VT59YB	1389-2 W.9-19.8 731 AB				
178 2VT59YC	1389-2 W.9-17.1 731 AB				
179 2VT59YD	1389-2 W.9-17.1 731 AB				
180 2VT60YA	1387-2 W.9-17.8 749 AB				

DOCUMENT ID 0031T/

ATTACHMENT B

FIRE DAMPERS	LOCATION	DOES VENTILATION SYSTEM NEED TO BE TURNED OFF?	SAT/INOP.	INT/DATE	CORRECTIVE ACTION TAKEN
181 2VT60YB	1387-2 W.9-18.9 749 AB				
182 2VT61Y	1412 R-15.2 768 TB	YES			
183 2VT62Y	1412 R-16.2 768 TB	YES			
184 2VT69Y	1418-2 U.2-16 687 TB				
185 2VT72Y	1416 V.5-19 710 TB				
186 2VT73Y	1416 V.2-19 710 TB				
187 2VT76Y	1415-1 W.3-23.1 731 TB				
188 2VV07Y	1388-2 R-16 710 AB				
189 2VV08Y	1389-2 R-16.2 731 AB				
190 2VV09Y	1387-2 R-16.2 749 AB				

DOCUMENT ID 0031T/

DOCUMENT ID 0031T/

ATTACHMENT B

FIRE DAMPERS	LOCATION	DOES VENTILATION SYSTEM NEED TO BE TURNED OFF?	SAT/INOP.	INT/DATE	CORRECTIVE ACTION TAKEN
191 2VV10Y	1391-1 M.4-18 768 AB				
192 2VX01Y	1387-2 J.1-19.4 749 AB				
193 2VX05Y	1387-2 J.6-20.7 749 AB				
194 2VX06YA	1389-2 J.1-19.6 731 AB				
195 2VX06YB	1389-2 J.1-19.6 731 AB				
196 2VX12Y	1389-2 J.6-20.9 731 AB				
197 2VX13Y	1388-2 J-19.3 710 AB				
198 2VX15Y	1381-2 J-21 842 AB	YES			
199 2VX16Y	1388-2 J.4-20.8 710 AB				
200 2VX28YA	1376-1 J.6-20.7 815 AB	YES			

DOCUMENT ID 0031T/

DOCUMENT ID 0031T/

ATTACHMENT B

FIRE DAMPERS	LOCATION	DOES VENTILATION SYSTEM NEED TO BE TURNED OFF?	SAT/INOF.	INT/DATE	CORRECTIVE ACTION TAKEN
201 2VX28YB	1376-1 J.6-20.7 815 AB	YES			
202 2VX29YA	1376-1 J.2-19.4 815 AB	YES			
203 2VX29YB	1376-1 J.2-19.4 815 AB	YES			
204 2VX30Y	1388-2 J.3-20 710 AB				
205 2VX31Y	1388-2 J.6-20.8 710 AB				
206 2VX32Y	1388-2 W-17.6 710 AB				
207 2VX33Y	1388-2 W.4-17.3 710 AB				
208 2VX34Y	1389.2 L.4-17.6 731 AB				
209 2VX35Y	1389-2 L.6-17.3 731 AB				
210 2VX36Y	1387-2 L.7-17.0 749 AB				

DOCUMENT ID 0031T/

DOCUMENT 0031T/

ATTACHMENT B

FIRE DAMPERS	LOCATION	DORS VENTILATION SYSTEM NEED TO BE TURNED OFF?	SAT/INOP.	INT/DATE	CORRECTIVE ACTION TAKEN
211 2VX37Y	1387-2 L.9-17.9 749 AB				
212 2VX38Y	1387-2 L.7-19.2 749 AB				
213 2VX39Y	1387-2 L.9-19.3 749 AB				
214 2VX40Y	1388-2 W-17.5 710 AB				
215 2VX41Y	1387-2 L.2-17.2 749 AB				
216 2VX42Y	1387-1 L.3-19 749 AB				
217 2VX43Y	1387-2 L.1-17.2 749 AB				
218 2VX52Y	1388-2 W-19.3 710 AB				
219 2VX54Y	1389-2 W-19.8 731 AB				
220 2VX56Y	1387-2 L.9-17.9 749 AB				

DOCUMENT ID 0031T/

DOCUMENT ID 0031T/

LTS-1000-35
Revision 0
February 9, 1984
57

ATTACHMENT B

FIRE DAMPERS	LOCATION	DORS VENTILATION SYSTEM NEED TO BE TURNED OFF?	SAT/INOP.	INT/DATE	CORRECTIVE ACTION TAKEN
221 2VY10Y	1400 B.3-22.9 674 DG				
222 2VY11Y	1400 B.3-22.9 674 DG				

DOCUMENT ID 003117

ATTACHMENT C

FROM PAGE 18 ANSI/ASQC Z.1.4-1981
SAMPLING PROCEDURES AND TABLES FOR INSPECTION BY ATTRIBUTES

SAMPLE	SAMPLE SIZE	CUMULATIVE SAMPLE SIZE	ACCEPTANCE NUMBER	REJECTION NUMBER
-----	8	8	Not Enough of a Sample for an Accurate Test	3
First	8	16	0	3
Second	8	24	1	4
Third	8	32	2	5
Fourth	8	40	3	6
Fifth	8	48	4	6
Sixth	8	56	5	7

ATTACHMENT D

RTL SAFETY VERIFICATION LOG

RTL AND ELECTRICAL WIRING IN
SAFE LOCATION

INIT/DATE

FIRE DAMPER

OVD04Y

OVD05Y

OVD41Y

1VD04Y

1VD05Y

1VD12Y

1VD13Y

1VD44Y

2VD04Y

2VD05Y

2VD12Y

2VD13Y

2VDA0Y

DOCUMENT ID 00317/

DOCUMENT 00317/

LTS-1000-35
Revision 0
February 9, 1984
60

ATTACHMENT E
TEST EVALUATION

Last Test Interval _____

Current Test Interval _____

Test Evaluation (include discussion of sample size to complete test)

Test Engineer

Tech Staff Supervisor

Fire Marshal

DOCUMENT ID 003117/

1 151 003

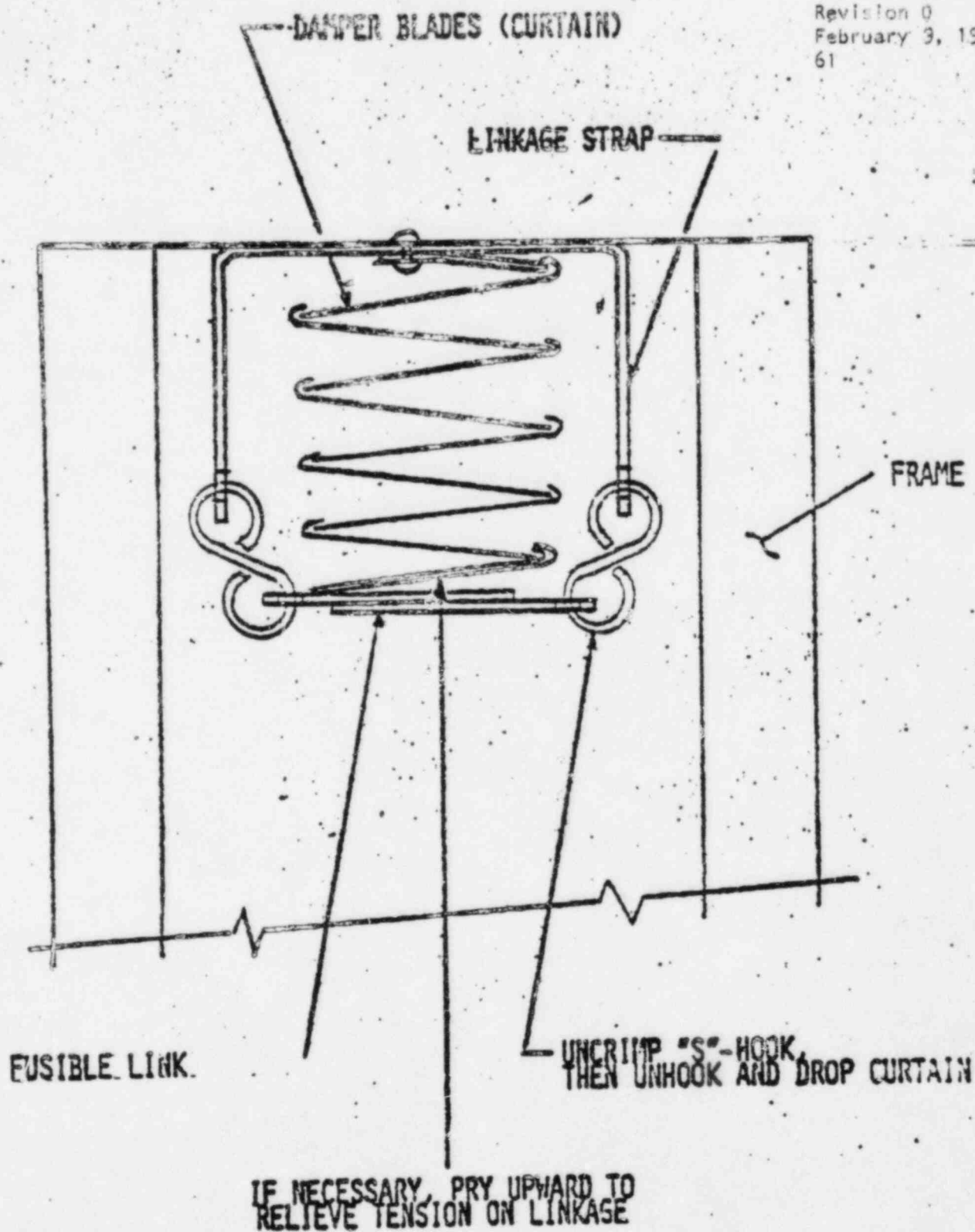


FIGURE A - FIRE DAMPER LINKAGE WITH "S"-HOOKS

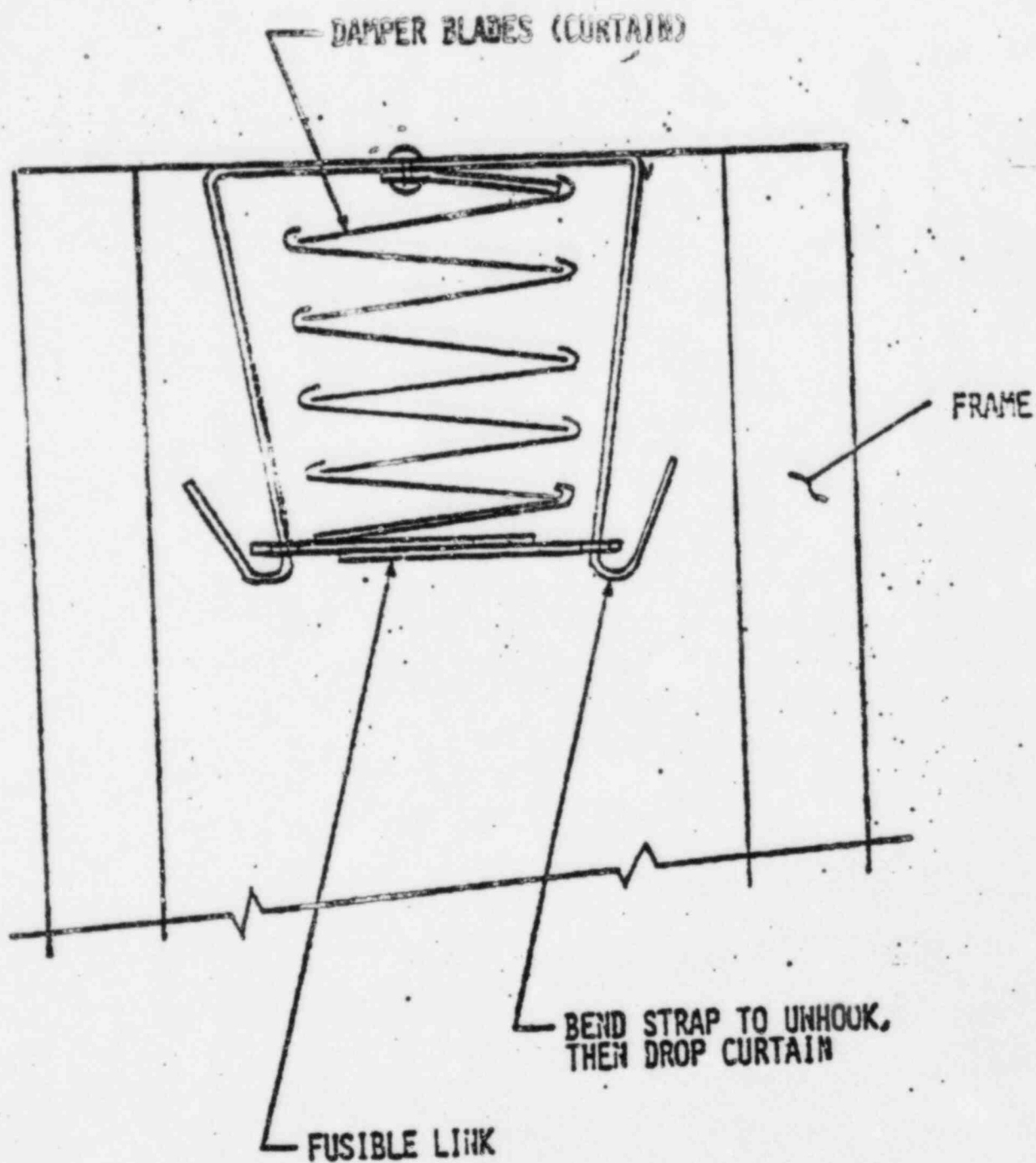
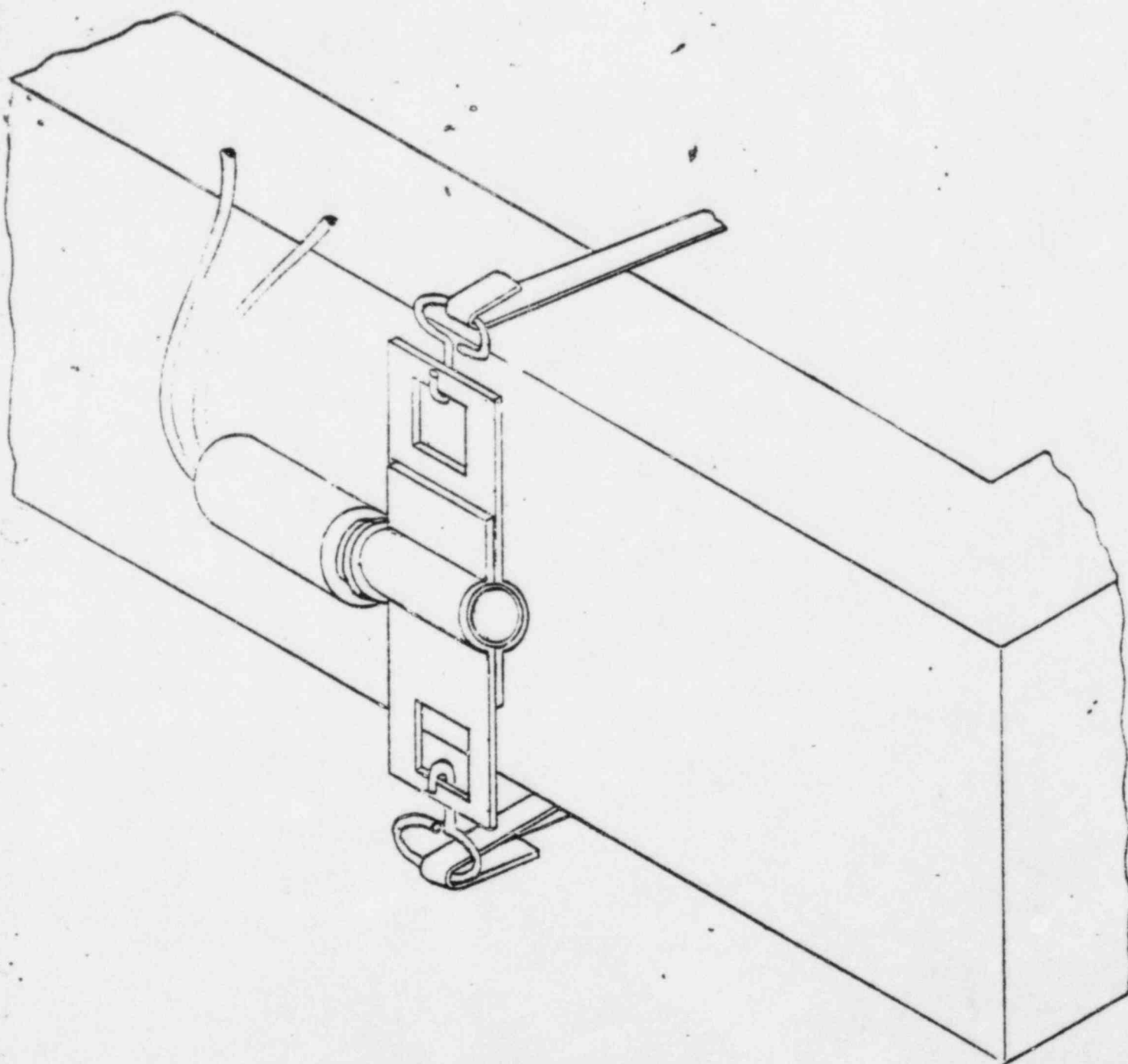


FIGURE B - FIRE DAMPER LINKAGE WITH
STRAP ONLY (NO "S"-HOOKS)

LTS-1000-35
Revision 0
February 9, 1984
63 (Final)



ELECTRO-THERMAL
LINK-FIRE DAMPER
CONFIGURATION

FIGURE C