

OPERATING DATA REPORT

DOCKET NO. 50-302
 DATE 3/1/84
 COMPLETED BY M.W. Culver
 TELEPHONE (904) 795-3802

OPERATING STATUS

1. Unit Name: Crystal River Unit 3
2. Reporting Period: 2/1/84 - 2/29/84
3. Licensed Thermal Power (MWt): 2544
4. Nameplate Rating (Gross MWe): 890
5. Design Electrical Rating (Net MWe): 825
6. Maximum Dependable Capacity (Gross MWe): 860
7. Maximum Dependable Capacity (Net MWe): 821

Notes

8. If Changes Occur in Capacity Ratings (Items Number 3 Through 7) Since Last Report, Give Reasons:

None

9. Power Level To Which Restricted, If Any (Net MWe): N/A

10. Reasons For Restrictions, If Any: N/A

	This Month	Yr.-to-Date	Cumulative
11. Hours In Reporting Period	<u>696</u>	<u>1440</u>	<u>61080</u>
12. Number Of Hours Reactor Was Critical	<u>667.2</u>	<u>1385.9</u>	<u>38955.1</u>
13. Reactor Reserve Shutdown Hours	<u>0</u>	<u>0</u>	<u>1280.3</u>
14. Hours Generator On-Line	<u>653.8</u>	<u>1365.6</u>	<u>37984.6</u>
15. Unit Reserve Shutdown Hours	<u>0</u>	<u>0</u>	<u>0</u>
16. Gross Thermal Energy Generated (MWH)	<u>1574903</u>	<u>3274207</u>	<u>85238542</u>
17. Gross Electrical Energy Generated (MWH)	<u>549204</u>	<u>1142975</u>	<u>29069711</u>
18. Net Electrical Energy Generated (MWH)	<u>523896</u>	<u>1090241</u>	<u>27607324</u>
19. Unit Service Factor	<u>93.9%</u>	<u>94.8%</u>	<u>62.2%</u>
20. Unit Availability Factor	<u>93.9%</u>	<u>94.8%</u>	<u>62.2%</u>
21. Unit Capacity Factor (Using MDC Net)	<u>91.7%</u>	<u>92.2%</u>	<u>57.2%</u>
22. Unit Capacity Factor (Using DER Net)	<u>91.2%</u>	<u>91.8%</u>	<u>54.8%</u>
23. Unit Forced Outage Rate	<u>6.1%</u>	<u>5.2%</u>	<u>23.0%</u>

24. Shutdowns Scheduled Over Next 6 Months (Type, Date, and Duration of Each):

None

25. If Shut Down At End Of Report Period, Estimated Date of Startup: N/A

26. Units In Test Status (Prior to Commercial Operation):

Forecast

Achieved

INITIAL CRITICALITY

1/14/77

INITIAL ELECTRICITY

1/30/77

COMMERCIAL OPERATION

3/13/77

AVERAGE DAILY UNIT POWER LEVEL

DOCKET NO. 50-302

UNIT FLCRP-3

DATE 3/5/84

COMPLETED BY D. Graham

TELEPHONE (904) 795-3802

MONTH 2/84

DAY AVERAGE DAILY POWER LEVEL
(MWe-Net)

1	<u>864</u>
2	<u>823</u>
3	<u>859</u>
4	<u>840</u>
5	<u>848</u>
6	<u>841</u>
7	<u>850</u>
8	<u>842</u>
9	<u>835</u>
10	<u>851</u>
11	<u>831</u>
12	<u>840</u>
13	<u>839</u>
14	<u>840</u>
15	<u>845</u>
16	<u>818</u>

DAY AVERAGE DAILY POWER LEVEL
(MWe-Net)

17	<u>840</u>
18	<u>827</u>
19	<u>832</u>
20	<u>751</u>
21	<u>0</u>
22	<u>366</u>
23	<u>608</u>
24	<u>728</u>
25	<u>842</u>
26	<u>827</u>
27	<u>640</u>
28	<u>297</u>
29	<u>808</u>
30	<u></u>
31	<u></u>

INSTRUCTIONS

On this format, list the average daily unit power level in MWe-Net for each day in the reporting month. Compute to the nearest whole megawatt.

UNIT SHUTDOWNS AND POWER REDUCTIONS

DOCKET NO. 50-302

UNIT NAME FLCRP03

DATE 3/5/84

COMPLETED BY D. Fields

TELEPHONE (904) 795-3802

REPORT MONTH 2/84

No.	Date	Type ¹	Duration (Hours)	Reason ²	Method of Shutting Down Reactor ³	Licensee Event Report #	System Code ⁴	Component Code ⁵	Cause & Corrective Action to Prevent Recurrence
84-06	840201	F	59	A	N/A	N/A	CC	HTEXCH	Power reduction forced by necessity to isolate leaking MSR high pressure steam bundle.
84-07	840208	S	6.7	F	N/A	N/A	CC	INSTRU	Reduced power to repair the 'B' OTSG level transmitter.
84-08	840220	F	32	B	1	N/A	CB	MOTORX	Shutdown to investigate oil level alarm on the 'C' RCP pump.
84-09	840222	S	51.3	B	N/A	N/A	HC	HTEXCH	Reduced power to clean condenser tubes.
84-10	840227	S	31.8	B	N/A	N/A	HC	HTEXCH	Reduced power to apply epoxy coating to 'A' condenser tube sheet to prevent leakage.
84-11	840228	F	10.7	3	3	Not Yet Assigned	EA	CKTBRK	Lightning strike caused momentary loss of off-site power and subsequent reactor scram.

1
F - Forced
S - Scheduled

2 Reason:
A-Equipment Failure (Explain)
B-Maintenance or Test
C-Refueling
D-Regulatory Restriction
E-Operator Training & License Examination
F-Administrative
G-Operational Error (Explain)
H-Other (Explain)

3 Method:
1-Manual
2-Manual Scram.
3-Automatic Scram.
4-Other (Explain)

4 Exhibit G - Instructions for Preparation of Data Entry Sheets for Licensee Event Report (LER) File (NURIG-0161)

5 Exhibit I - Same Source

MONTHLY OPERATIONAL SUMMARY STATEMENT

DOCKET NO. 50-302

UNIT FLCRP-3

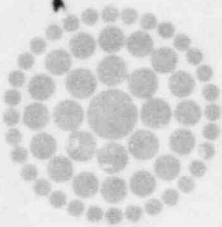
DATE 3/5/84

COMPLETED BY D. Fields

TELEPHONE (904) 795-3802

MONTH February 1984

SUMMARY STATEMENT: The plant experienced one scram and one shutdown during the month. Power was reduced on four separate occasions. Plant output was slightly limited at various times during the month by high OTSG levels caused by fouling. Output was periodically limited by the EPA limit of 17.5° temperature rise across the condenser.



**Florida
Power**
CORPORATION

March 12, 1984
3F0384-08

Mr. Richard C. DeYoung, Director
Office of Inspection and Enforcement
U.S. Nuclear Regulatory Commission
Attn: Document Control Desk
Washington, DC 20555

Subject: Crystal River Unit 3
Docket No. 50-302
Operating License No. DPR-72
Monthly Operating Report

Dear Mr. DeYoung:

Attached are twelve (12) copies of the Crystal River Unit 3 February 1984 Monthly Operating Report. This report is submitted in accordance with Technical Specification 6.9.1.6.

Sincerely,

G.R. Westafer
Manager, Nuclear Operations
Licensing and Fuel Management

DVH:feb

Attachments

cc: Mr. J.P. O'Reilly
Regional Administrator, Region II
Office of Inspection & Enforcement
U.S. Nuclear Regulatory Commission
101 Marietta Street N.W., Suite 2900
Atlanta, GA 30303

IE24
11