

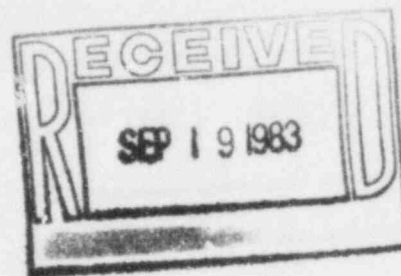
TEXAS UTILITIES GENERATING COMPANY

P. O. BOX 2300 • GLEN ROSE, TEXAS 76043

September 13, 1983

R. A. JONES
MANAGER PLANT OPERATIONS
COMANCHE PEAK SES

TNRC-83013



Mr. G. L. Madsen
Chief, Reactor Project Branch 1
U.S. Nuclear Regulatory Commission
Region IV
611 Ryan Plaza Drive, Suite 1000
Arlington, TX 76102

Subject: Comanche Peak Steam Electric Station
Nuclear Regulatory Commission Emergency Preparedness Appraisal

Dear Mr. Madsen:

To aid you in your preparations for the upcoming appraisal at the Comanche Peak Steam Electric Station, please find attached a copy of the latest issue (dated September 11, 1983) of the "CPSES NRC Emergency Preparedness Appraisal Items Status Tracking Report". In addition, please find attached copies of the CPSES Emergency Preparedness Planning Project organization chart and the list of responsibility assignments within the project group.

Should you have any questions or comments regarding the attached material, please contact me or R. B. Wester at (817) 897-4856.

Sincerely,

A handwritten signature in cursive script that reads "R. A. Jones".

R. A. Jones

RAJ/dab

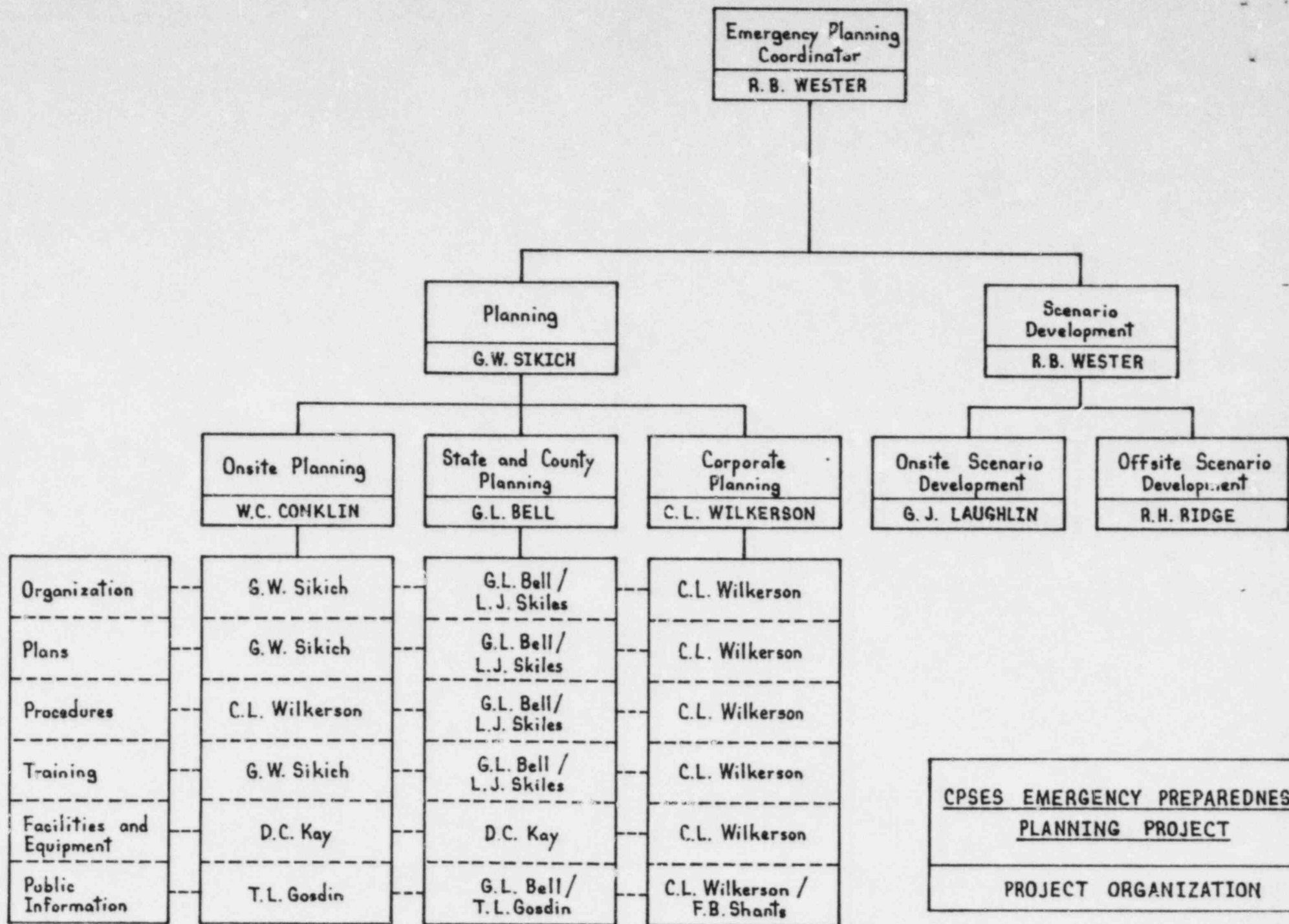
Attachments

cc: Mr. J. L. Montgomery (1L,1A)
U.S. Nuclear Regulatory Commission
Region IV

ARMS

8403130313 830913
PDR ADOCK 05000445
F PDR

IE 35
N. J. R. IV



August 4, 1983

Assignment of Responsibilities

A. Procedure Revisions

EPP - 101	CLW	EPP - 300	WCC
EPP - 102	CLW	EPP - 301	WCC
EPP - 104	RBW	EPP - 302	WCC
EPP - 105	GLB	EPP - 304	WCC
EPP - 107	DCK	EPP - 305	CLW
EPP - 109	GWS	EPP - 306	WCC
EPP - 112	GWS	EPP - 307	DCK
EPP - 113	CLW	EPP - 308	GLB
EPP - 114	GLB	EPP - 309	CLW
EPP - 115	CLW	EPP - 310	CLW
EPP - 116	DCK		
EPP - 117	SEB	TRA - 105	GWS
EPP - 121	GWS		
EPP - 201	WCC		
EPP - 203	GLB		
EPP - 204	DCK		
EPP - 205	DCK		
EPP - 206	DCK		
EPP - 207	DCK		
EPP - 208	DCK		
EPP - 209	DCK		
EPP - 210	DCK		

8. CPSES Emergency Plan Revisions

Section	1.0	GWS
Section	2.0	WCC
Section	3.0	GLB
Section	4.0	DCK
Section	5.0	CLW
Section	6.0	DCK
Section	7.0	WCC
Section	8.0	DCK
Section	9.0	CLW
Section	10.0	GLB
Section	11.0	GWS
Section	12.0	RBW
Section	13.0	GWS
Section	14.0	CLW

Letters of Agreement GLB

NUREG-0654 Cross-Reference GWS

C. Onsite Training

Module	1	GWS
Module	2	WCC
Module	3	WCC
Module	4	WCC
Module	5	CLW
Module	6	CLW
Module	7	CLW
Module	8	SEB
Module	9	DCK

D. Facilities and Equipment

DRMS	WCC
ERF Computer / SPDS	WCC
Meteorological Monitoring System	WCC
Emergency Kits / Lockers	DCK
Onsite Alarms	SEB
Outdoor Warning System	GLB
Furniture	DCK
Communications	DCK
Status Boards	DCK
Interfacing Equipment w/ State	DCK