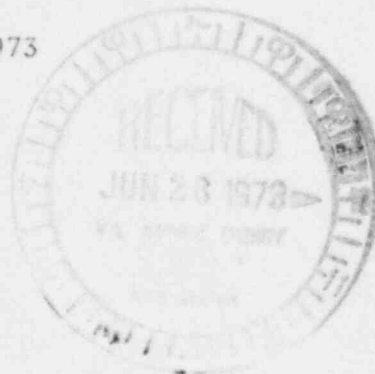


Jersey Central Power & Light Company

MADISON AVENUE AT PUNCH BOWL ROAD • MORRISTOWN, N. J. 07960 • 539-6111

June 22, 1973

Mr. A. Giambusso
Deputy Director for Reactor Projects
Directorate of Licensing
United States Atomic Energy Commission
Washington, D. C. 20545



Dear Mr. Giambusso:

Subject: Oyster Creek Station
Docket No. 50-219
Electromatic Relief Valve Failure

This letter is intended to follow up our April 24, 1973 letter reporting one electromatic relief valve NR-108-B failed an operability test. As a result of additional investigation into this problem, the reason for the failure of the "B" electromatic relief valve to open during the test was traced to the failure of the solenoid core guide pin as previously reported. The solenoid core is guided by two 1/2" pins silver soldered to their support plates. The soldered joint failed partially because of marginal soldering. The guide pins were cocked to one side and prevented the solenoid core from moving in the trip direction as required.

To prevent this type failure from reoccurring, the following repair was made to the pins support plate assembly of all five electromatic relief valves at Oyster Creek. (Please refer to the attached drawing.) New 304SS guide pins were machined to the dimensions shown on the attached drawing. The new pins were welded to the underside of the support plates using 308L wire. New 1/8" spacers were installed between the solenoid core frame and the guide support to clear the underside weld.

Upon completion of the repair, the valves were tested satisfactorily with the reactor at rated pressure during our restart following our recent re-fueling outage.

Enclosed are forty (40) copies of this report.

Very truly yours,

Donald A. Ross
Manager, Nuclear Generating Stations

8305120388 740207
PDR ADDCK 05000219
S PDR

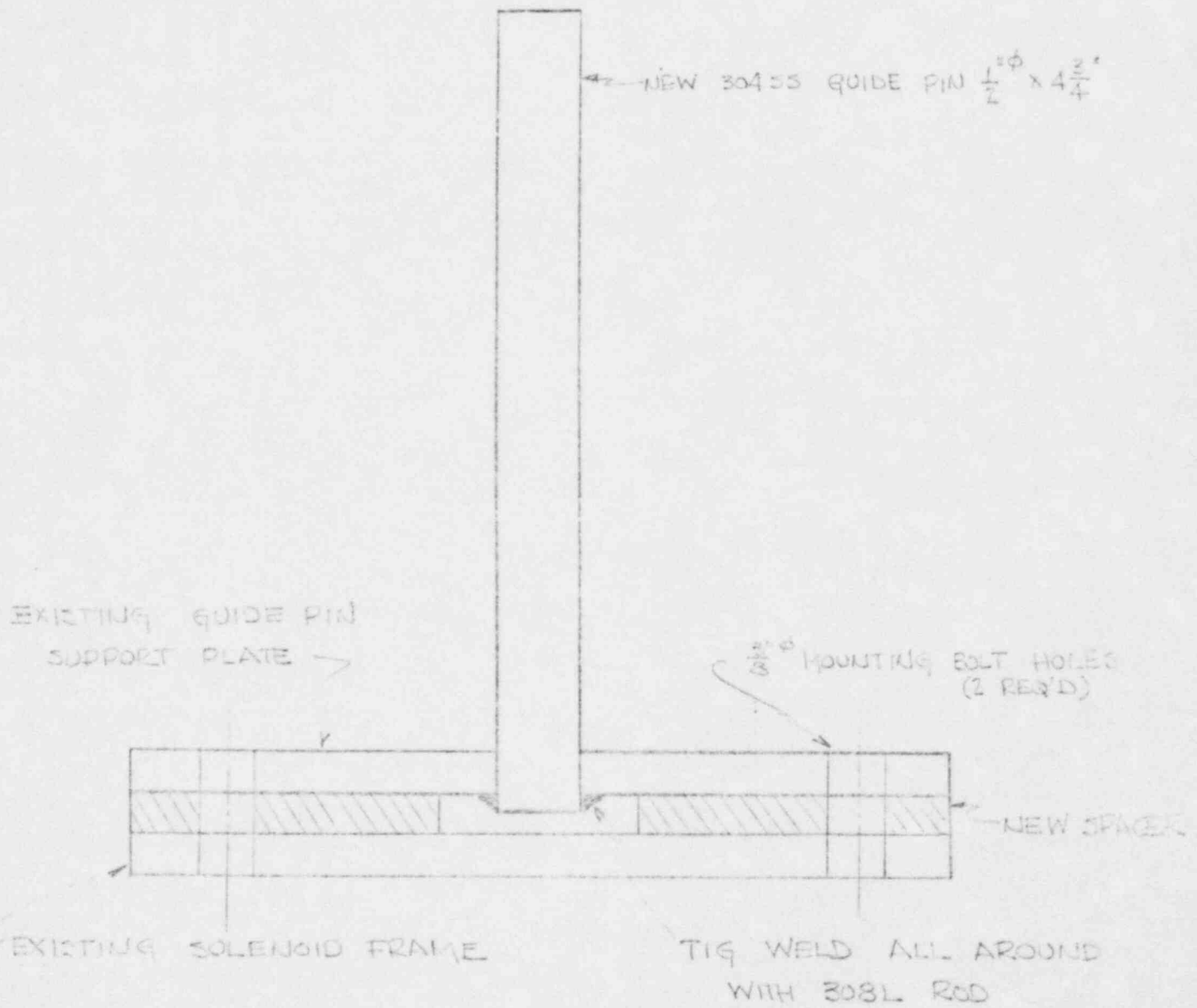
DAR:cs
Enclosures

cc: Mr. J. P. O'Reilly, Director
Directorate of Regulatory Operations, Region I

Handwritten: 50219

5083

COPY SENT REGION



ELECTROMATIC RELIEF VALVE SOLENOID

GUIDE PIN REPAIR