

ATTACHMENT 4  
NRC DOCKETS 50-321, 50-366  
OPERATING LICENSES DPR-57, NPF-5  
EDWIN I. HATCH NUCLEAR PLANT UNITS 1 AND 2  
ADMINISTRATIVE TECHNICAL SPECIFICATIONS SUBMITTAL

The proposed change to the Technical Specification (Appendix B to the Operating License) would be incorporated as follows:

Remove Page

5-3  
5-11

Insert Page

5-3  
5-11

8405040248 840424  
PDR ADOCK 05000321  
P PDR

- b. Procedures for implementing the responsibilities specified in Section 5.1.1, and proposed changes thereto.
- c. Proposed changes to the ETS.
- d. Unplanned releases of a radioactive material from the site.

5.3.1.5 The Manager-Nuclear Engineering and Chief Nuclear Engineer shall review the following:

- a. Proposed changes to plant systems or equipment, provided that such changes are identified by the PRB as having a potential radiological environmental impact.
- b. Proposed changes to Section 3.2 of the ETS.

#### 5.3.2 Audit Responsibility

5.3.2.1 The General Manager of Quality Assurance and Radiological Health and Safety is responsible for an audit, conducted at least once a year, of the activities of the General Manager-Plant Hatch, the Manager of Environmental Affairs, and the Manager-Nuclear Engineering and Chief Nuclear Engineer related to compliance with the ETS.

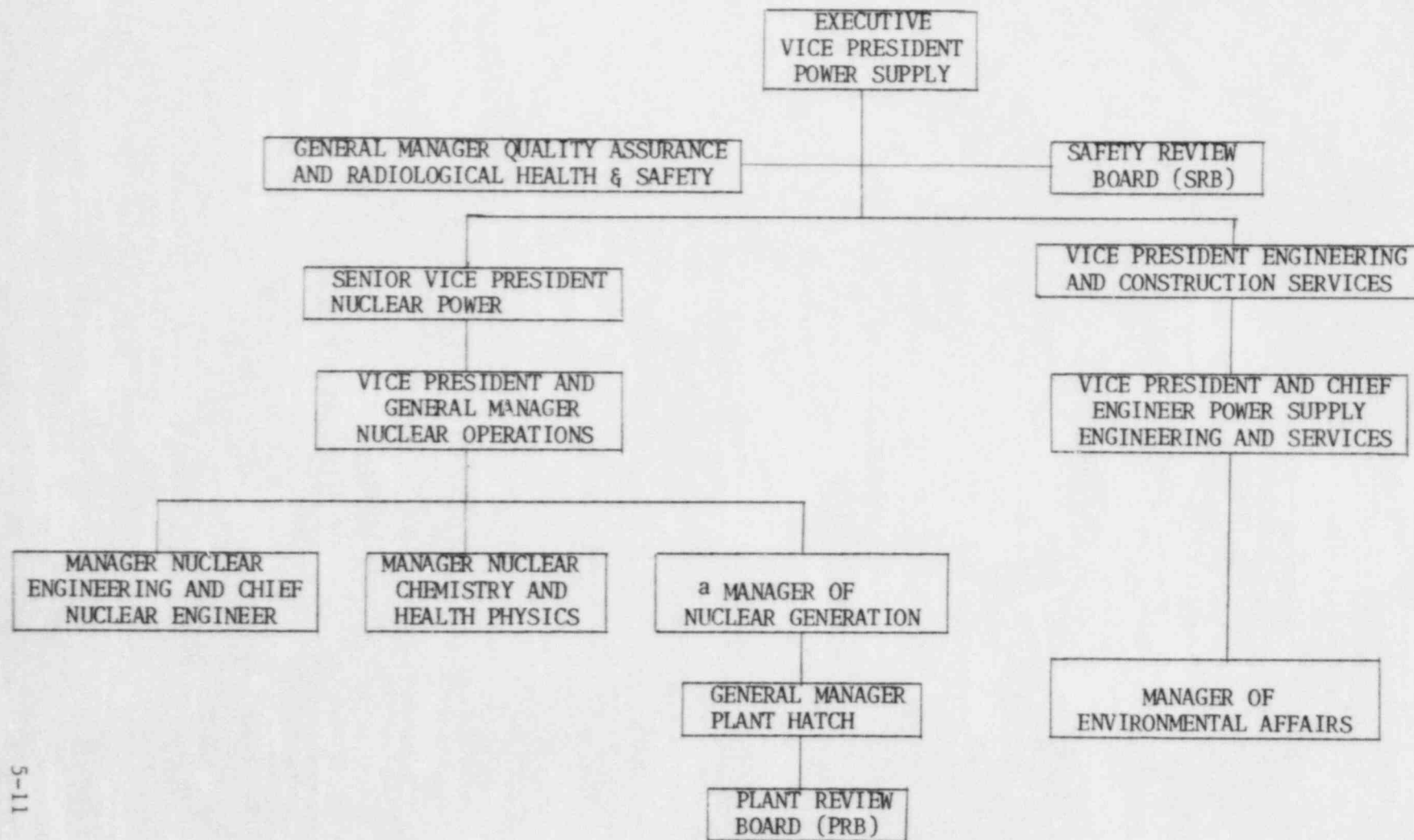
5.3.2.2 Audits of facility activities shall be performed at least once a year under the cognizance of the SRB to ensure conformance of facility operation to provisions of the ETS.

#### 5.4 Action to be taken if a Limiting Condition for Operation is Exceeded

- 5.4.1 Remedial action, as permitted by the ETS, shall be taken until the LCO can be achieved.
- 5.4.2 Violations of an LCO will be reported immediately to the General Manager-Plant Hatch.
- 5.4.3 A separate report of each LCO violation shall be prepared by the General Manager-Plant Hatch. Copies of such reports will be submitted to the Vice President and General Manager Nuclear Operations, the Manager Nuclear Generation, the Manager of Environmental Affairs, the Manager-Nuclear Engineering and Chief Nuclear Engineer, and the Chairman of the SRB for review and approval of corrective actions, as specified in Section 5.3.1.3c.
- 5.4.4 The General Manager-Plant Hatch shall report such violations to the NRC in accordance with Section 5.7.2.

#### 5.5 State and Federal Permit Certifications

Section 401 of PL 92-500, the Federal Water Pollution Control Act Amendments of 1972 (FWPCA), requires any applicant for a Federal license or permit to conduct any activity that may result in any discharge into



a CURRENTLY VACANT

ORGANIZATION STRUCTURE RELATED  
TO ENVIRONMENTAL ACTIVITIES

FIGURE 5.2-1

## Attachment 5

### Corporate Management and Technical Support

The responsibility for the design, construction, and operation of HNP is that of the executive vice president - power supply. He coordinates the plant construction activities including overall design and licensing within GPC. Reporting to the executive vice president - power supply are: the senior vice president nuclear power, the general manager fuel services, the senior vice president fossil & hydro power, the general manager - quality assurance and radiological health & safety, and the vice president engineering & construction services.

Offsite technical support to plant operations outside GPC is provided by Southern Company Services (SCS) civil and architectural, mechanical, and electrical design disciplines, and the nuclear plant support department. SCS nuclear fuels department also provides nuclear fuel contract administrative services, and the nuclear safety and licensing support. Bechtel Power Corporation (BPC) is also subcontracted for engineering work by SCS as required to maintain proper technical support to GPC.

### Power Supply Engineering and Services Department (PSE&S)

The PSE&S department is part of the GPC power supply organization. The department reports to the executive vice president through the vice president engineering & construction services. The department is headed by the vice president & chief engineer power supply engineering & services and consists of four groups--engineering services, engineering, administrative services, and environmental affairs.

The primary functions of the PSE&S department in support of HNP include:

- o Providing engineering and technical support for operation and maintenance
- o Overall project management and engineering services involving design, budget, procurement, construction, and startup of retrofit projects
- o Participation with SCS and other GPC departments in the planning, scheduling, budgeting, and performance of engineering and licensing work
- o Direct and indirect technical and/or licensing interface with various environmental and other governmental and regulatory agencies

### Engineering Services

The manager of engineering services is responsible to the vice president & chief engineer power supply engineering & services for securing and managing all engineering support involving design, procurement, and construction for the company's operating nuclear generating plants. Engineering services maintains an up-to-date status on all phases of the design, procurement, and construction services required for necessary plant additions, modifications, and environmental retrofits.

The manager of engineering services directs the engineering services organization in performing the following functions:

- o Providing a single interface through which the plants may obtain engineering assistance
- o Coordinating the activities of the various agencies involved in responding to plant requests for engineering assistance
- o Maintaining a qualified suppliers list for nuclear plants and providing related procurement assistance as required

### Hatch Project Manager

Reporting to the manager of engineering services, the Hatch project manager is assigned the Hatch facilities and is responsible for performing the following functions:

- o Securing all engineering services for assigned operating nuclear plants by analyzing project responsibilities and assigning engineering responsibility to GPC power supply engineering, SCS, or outside architectural/engineering companies to ensure that engineering support is provided to the plants in a timely, effective, and cost efficient manner
- o Serving as the principal interface between the appropriate plant(s) staff and the GPC power supply engineering, construction, and procurement departments, SCS, and/or outside architectural/engineering organizations to ensure coordination of all phases of engineering, procurement, and construction support
- o Participating with the manager of environmental affairs and/or other appropriate engineering agencies in order to secure necessary permits, licenses, and tax exempt pollution abatement bond financing for applicable projects
- o Continuously participating with the plant staff(s) and the appropriate engineering agencies in evaluating the performance of facilities and equipment



### Environmental Affairs Section

The environmental affairs section is responsible to the vice president & chief engineer power supply engineering & services and the manager of environmental affairs. The section is responsible for managing and coordinating GPC's overall environmental program principally for generating plants, to assure compliance with state and federal environmental regulations in design, construction, and operation of these facilities. Environmental affairs coordinates and obtains all environmental permits and non-nuclear licenses for generating facilities from the State Environmental Protection Division, U.S. Environmental Protection Agency, U.S. Army Corps of Engineers, U.S. Coast Guard, and the Department of Energy. Environmental affairs also directs laboratories in conducting tests, surveys, studies, and analyses to ensure that generating facilities comply with environmental regulations. In performing these services, environmental affairs provides a single interface for communications with outside agencies regarding environmental matters.

### QA Department

The GPC General Manager - Quality Assurance and Radiological Health and Safety (GMQA) is responsible functionally to the executive vice president - power supply. The executive vice president has authorized the GMQA to manage the QA program for design, construction, testing, operation, and maintenance and to ensure its implementation in accordance with the requirements of the QA manual. The QA department is composed of a staff in the corporate headquarters and at the plant site.

The QA corporate headquarters staff is responsible for defining the QA program, writing the QA program description for safety analysis reports, and writing and publishing the QA manual. Through its audit program, the corporate headquarters staff is also responsible for evaluation of architect-engineer and other support group QA programs. The Radiological Health and Safety Representative (RHSR) reports to the GMQA who assists the Company in the oversight of Radiological Protection efforts. The RHSR provides on-site reviews and assessments of plant programs and policies in the area of Radiological Protection which are reported to the GMQA and Nuclear Operations personnel. The RHSR, in cooperation with Nuclear Operations Health Physics personnel, assists in identifying opportunities for program or practice enhancements and related improvements. The RHSR assists the GMQA in the development and implementation of the radiological audit program used to review specific regulatory performance requirements. In addition, reviews of industry information on radiological protection measures and concerns are undertaken to assess the applicability of this information to the Company and its programs.

The QA field staff at the Hatch site is managed by a QA site supervisor who reports to the GMQA through the Hatch QA Manager. The QA site supervisor provides an independent review and evaluation of the adequacy and effectiveness of the site QA program. He ensures that field activities involved in construction, preoperational testing, and plant operations conform to QA program requirements and approved procedures.

#### Nuclear Power Department

The nuclear power department, under the supervision of the senior vice president - nuclear power, has the direct responsibility for the operation and maintenance of HNP.

#### Senior vice president - nuclear power

The senior vice president - nuclear power is responsible to the executive vice president and group executive - power supply for the safe, reliable, and efficient operation and maintenance of all nuclear generating plants in the GPC system. He works closely with the other departments to ensure that the plant design, construction, and operation is carried out efficiently and safely. Reporting to the senior vice president - nuclear power are the vice president and general manager - nuclear operations and the vice president and general manager - Vogtle project.

#### Vice president and general manager - nuclear operations

The vice president and general manager - nuclear operations is responsible to the senior vice president - nuclear power for the safe, reliable, and efficient operation of all operating nuclear generating plants in the GPC system. Reporting to the vice president and general manager - nuclear operations are: the manager - nuclear generation, the manager nuclear engineering and chief nuclear engineer, the manager nuclear training and the manager nuclear chemistry and health physics.

#### Manager - nuclear generation

The manager - nuclear generation reports directly to the vice president and general manager - nuclear operations. Plant manager of each operating nuclear plant in the GPC system report directly to the manager - nuclear generation. The manager nuclear generation has corporate responsibility for fire protection. This position is currently vacant. The duties are assumed by the vice president and general manager nuclear operations.

#### Manager nuclear engineering and chief nuclear engineer

The manager nuclear engineering and chief nuclear engineer reports directly to the vice president and general manager - nuclear operations. As manager of the nuclear division, the manager nuclear engineering and chief nuclear engineer has the following responsibilities.

- o Providing regulatory and licensing support for the operating nuclear units
- o Documenting licensing contacts with the U.S. Nuclear Regulatory Commission (NRC) and maintaining files of all applicable NRC correspondence
- o Interfacing with the appropriate companies and organizations in the areas of nuclear fuel management, procurement, and reprocessing
- o Evaluating and preparing amendments to the plant operating licenses and FSARs for operating nuclear units
- o Preparing and maintaining plant security plans, including necessary agreements with state, federal, and local agencies
- o Addressing safety evaluations and unreviewed safety questions for design changes to operating units
- o Providing any other technical, licensing, or nuclear expertise, or onsite technical assistance that may be required

#### Nuclear licensing and support engineers

The nuclear licensing and support engineers report to the manager nuclear engineering and chief nuclear engineer and assist him in the discharge of his responsibilities as listed above.

#### Manager - nuclear training

The manager - nuclear training reports directly to the vice president and general manager - nuclear operations. The responsibilities of this position are as follows:

- o Provide administrative support and policy direction to the Manager Training at the plant site.
- o Providing the preparation and conduct the training programs at GPC's nuclear plants and training centers to ensure compliance with NRC regulations and INPO standards, and ensuring that nuclear operations personnel have the education, training, and skills to safely and efficiently operate and maintain the plants
- o Staffing and maintaining a group of qualified instructors who are capable of teaching all aspects of nuclear technology including plant operations, electrical and mechanical maintenance, health physics, chemistry, and control and instrument technology
- o Ensuring that all training programs and materials are documented to comply with NRC regulations and INPO criteria



### Manager Nuclear Chemistry and Health Physics

This position reports to the Vice President and General Manager Nuclear Operations. The incumbent is responsible for the management of technical support staff activities in the area of nuclear chemistry and health physics. This includes emergency preparedness, radiological environmental assessment, health physics, radiation protection, plant chemistry, and radwaste. The management of emergency preparedness activities encompasses overall responsibility for the development and maintenance of the Corporate and Site Emergency Plans, including drills and facility development. The management of radiological environmental assessment activities encompasses overall responsibility for the radiological environmental programs at nuclear facilities. The management of health physics and radiation protection activities includes overall responsibility for support of plant health physics and radiation protection programs. The management of plant chemistry and radwaste activities includes the overall support of plant programs in these areas. The incumbent is responsible for management direction and coordination of related activities, which include providing reviews, assessment, and recommendations concerning proposed changes; participating in industry review groups reviewing and coordinating responses to NRC inspections and other audit finding concerning nuclear chemistry and health physics items; improvement of plant procedures, programs, and practices; and coordinating training programs to maintain and improve technical expertise of the Nuclear Chemistry and Health Physics staff.

### Plant Organization

Operation of the plant is directed by the manager - operations, who is responsible to the deputy general manager and general manager - Plant Hatch. Normal shift operation is under direct control of the operations supervisor, who is responsible to the operations superintendent and manager - operations. An operations supervisor is onsite at all times when at least one unit is loaded with fuel. A normal operating shift for each unit consists of the shift supervisor, a plant operator, 2 assistant plant operators, 3 plant equipment operators and a Shift Technical Advisor. The shift supervisor, as a minimum, will be qualified as a senior reactor operator.

Normal plant maintenance is accomplished by plant maintenance personnel under the direction of the manager - maintenance, who is responsible to the general manager and deputy general manager. Other GPC employees and contract maintenance crews may be used to supplement the plant maintenance department as necessary.

Plant QA is monitored by the Hatch QA site manager, who serves as the GQA's site representative. Quality control is performed by the superintendent of quality control (who is responsible to the general manager and deputy general manager) with assistance from designated inspection personnel. The general manager has the site responsibility for implementation of the plant's QA program to assure compliance with codes, standards, regulatory requirements, operating license, and company policies and rules for the operation, maintenance, and modification of the plant.

Technical support in the areas of reactor physics, plant performance, and maintenance of instruments and control systems is under the direction of the manager - engineering, who is responsible to the general manager and the deputy general manager. Technical support in the areas of: chemistry, radiochemistry, and radiation protection is under the direction of the manager - health physics and chemistry, who is responsible to the general manager and deputy general manager.

The security organization is responsible to the manager - operations for its day-to-day operation. The manager - nuclear training is responsible to the deputy general manager for administering the operator training and retraining program.

#### Personnel Functions, Responsibilities, and Authorities

The personnel functions, responsibilities, and authorities of the plant operating organization are:

##### General Manager - Plant Hatch

The general manager reports directly to the manager -nuclear generation in GPC's general office. He is responsible for the safety of the plant staff and the general public. Furthermore, he is responsible for operating the plant within the Technical Specifications and for complying with the provisions of the operating licenses for HNP-1 and HNP-2.

##### Deputy General Manager

The deputy general manager assists the general manager in all phases of plant management.

### Manager - Operations

The manager - operations directs day-to-day operation of the plant in a safe and efficient manner in compliance with the established plant procedures and assumes the responsibilities of the general manager in the event the general manager and the deputy general manager are absent.

### Operations Superintendent

The operations superintendent, who reports directly to the manager - operations, assumes the responsibilities and authorities of the manager - operations in his absence. He aids the manager - operations in performing his duties.

### Operations Supervisor

The operations supervisor reports to the operations superintendent. The operations supervisor is cognizant of all activities and operational conditions which might affect the safety of the plant. The operations supervisor has the ultimate command authority in the control room and is responsible for taking control of all activities in the control room during an accident or emergency situation to ensure the proper coordination of all activities.

### Shift Supervisor

The shift supervisor directs and is responsible for the actual operation of the unit on his assigned shift. He supervises the operators on his shift and is aware of all maintenance and testing being performed during his shift. He has the responsibility and authority to shut down the reactor unit if, in his judgement, conditions warrant this action. He has responsibility for the unit in the absence of the general manager, deputy general manager, manager - operations, operations superintendent, operations supervisor and manager - engineering.

### Plant Operator

The plant operator works under the direction of the shift supervisor. He controls and directs the operation of one of the reactors and turbine-generator units, including auxiliaries and electrical transmission equipment. He has the responsibility and authority to shut down the unit under his control if, in his judgement, conditions warrant this action.

#### Assistant Plant Operator

The assistant plant operator works under the direction of the plant operator(s) and/or shift supervisor. He assists in the operation of plant equipment and in operations in the control room as required.

#### Building and Grounds Superintendent

The building and grounds superintendent works under the direction of the manager - operations. He is responsible for plant area cleaning and other routine unskilled labor activities.

#### Manager - Engineering

The manager - engineering manages the plant's technical activities in the areas of reactor physics and surveillance and efficiency testing and assumes the responsibility of the general manager in the event the general manager, deputy general manager, and manager - operations are absent.

#### Superintendent of Plant Engineering Services

The superintendent of plant engineering services is directly responsible to the manager - engineering and assists him in his duties relating to plant design and engineering.

#### Superintendent of Regulatory Compliance

The superintendent of regulatory compliance is directly responsible to the manager - engineering and assists him in his duties relating to regulatory concerns. The duties include but are not limited to: monitoring of audit findings to identify trends; coordinating site responses to IEB's, IER's, IEN's, SER's, LER's, and SOER's; and processing all license changes. He is also the secretary of the PRB.

#### Manager - Training

The manager - training is responsible to the deputy general manager for training and retraining personnel.

#### Supervisors - Training

The supervisors - training are responsible to the manager - training for establishment of training and retraining programs.

#### Manager - Maintenance

With the assistance of the other departments, the manager - maintenance directs and plans the plant maintenance activities, including the instrumentation and control systems.

#### Superintendent of Maintenance Operations

The superintendent of maintenance operations reports directly to the manager - maintenance and assists in directing the plant maintenance activities with the exception of instrumentation and control systems.

#### Supervisor - Maintenance

The supervisor - maintenance works under the direction of the superintendent of maintenance operations and assists in directing the plant maintenance activities.

#### Manager - Health Physics and Chemistry

The manager - health physics and chemistry directs chemical, radiochemical, and health physics activities. He supervises personnel monitoring and coordinates maintenance in radiation control areas. He is responsible for operation of personnel and area radiation monitoring systems and their proper calibration.

#### Superintendent of Health Physics

The superintendent of health physics reports to the manager - health physics and chemistry and assists him in the discharge of his duties relating to health physics, as low as reasonably achievable (ALARA) programs, and radiological safety.

#### Laboratory Supervisors

The laboratory supervisors work under the direction of the manager - health physics and chemistry for all activities relating to radiation protection for personnel and for receiving and shipping of radioactive materials. They are responsible for controlling and maintaining records of exposure within plant areas as well as administering radiation protection orientation training and retraining programs, and directing all chemical and radiochemical control and surveillance programs pertinent to the efficient and safe operation of the reactor, turbo-generator, and auxiliary systems. They are also responsible for activities associated with health physics instrument calibration, process radiation monitor calibration, counting room instrument use and calibration, and environmental monitor surveillance.



#### Superintendent of Quality Control

The superintendent of quality control reports through the manager - maintenance to the general manager and deputy general manager and is responsible for work inspection, verification of maintenance, modification, procedure implementation, material and equipment control, and monitoring of procurement documents.

#### Senior Regulatory Specialist

The senior regulatory specialist is directly responsible to the superintendent of plant engineering services for coordinating the overall fire protection program at the plant. In addition, he serves as Occupational Safety and Health Administration (OSHA) specialist to assure compliance with the federal OSHA regulations and as plant safety specialist coordinating all plant safety functions.

#### Manager - Administration, Finance, and Human Resources

The manager- administration, finance, and human resources is responsible to the general manager and deputy general manager for accounting, personnel, payroll, and other administrative functions.