

# OPERATING DATA REPORT

DOCKET NO. 50-302  
 DATE 4/3/84  
 COMPLETED BY D. Graham  
 TELEPHONE (904) 795-3802

## OPERATING STATUS

1. Unit Name: Crystal River Unit 3
2. Reporting Period: 3/1/84 - 3/31/84
3. Licensed Thermal Power (MWt): 2544
4. Nameplate Rating (Gross MWe): 890
5. Design Electrical Rating (Net MWe): 825
6. Maximum Dependable Capacity (Gross MWe): 860
7. Maximum Dependable Capacity (Net MWe): 821
8. If Changes Occur in Capacity Ratings (Items Number 3 Through 7) Since Last Report, Give Reasons:  
N/A

Notes

9. Power Level To Which Restricted, If Any (Net MWe): N/A
10. Reasons For Restrictions, If Any: N/A

	This Month	Yr.-to-Date	Cumulative
11. Hours In Reporting Period	<u>744</u>	<u>2184</u>	<u>61824</u>
12. Number Of Hours Reactor Was Critical	<u>730.1</u>	<u>2116</u>	<u>39685.2</u>
13. Reactor Reserve Shutdown Hours	<u>0</u>	<u>0</u>	<u>1280.3</u>
14. Hours Generator On-Line	<u>722.3</u>	<u>2087.9</u>	<u>38706.9</u>
15. Unit Reserve Shutdown Hours	<u>0</u>	<u>0</u>	<u>0</u>
16. Gross Thermal Energy Generated (MWH)	<u>1733874</u>	<u>5008081</u>	<u>36972416</u>
17. Gross Electrical Energy Generated (MWH)	<u>602702</u>	<u>1745677</u>	<u>29672413</u>
18. Net Electrical Energy Generated (MWH)	<u>574586</u>	<u>1664827</u>	<u>28181910</u>
19. Unit Service Factor	<u>97.1%</u>	<u>95.6%</u>	<u>62.6%</u>
20. Unit Availability Factor	<u>97.1%</u>	<u>95.6%</u>	<u>62.6%</u>
21. Unit Capacity Factor (Using MDC Net)	<u>94.1%</u>	<u>92.8%</u>	<u>57.6%</u>
22. Unit Capacity Factor (Using DER Net)	<u>93.6%</u>	<u>92.4%</u>	<u>55.3%</u>
23. Unit Forced Outage Rate	<u>2.9%</u>	<u>4.4%</u>	<u>22.7%</u>

24. Shutdowns Scheduled Over Next 6 Months (Type, Date, and Duration of Each):  
Maintenance outage to repair feedwater leaks scheduled for 4/5/84 to last 19 hours.

25. If Shut Down At End Of Report Period, Estimated Date of Startup: N/A

26. Units In Test Status (Prior to Commercial Operation):

INITIAL CRITICALITY  
 INITIAL ELECTRICITY  
 COMMERCIAL OPERATION

Forecast  
 Achieved  
1/14/77  
1/30/77  
3/13/77

8404170177 840331  
 PDR ADOCK 05000302  
 R PDR

IE-24

(9/77)

# AVERAGE DAILY UNIT POWER LEVEL

DOCKET NO. 50-302

UNIT FLCRP-3

DATE 4/3/84

COMPLETED BY D. Graham

TELEPHONE (904) 795-3802

MONTH March 1984

DAY AVERAGE DAILY POWER LEVEL  
(MWe-Net)

1	<u>825</u>
2	<u>842</u>
3	<u>816</u>
4	<u>670</u>
5	<u>838</u>
6	<u>843</u>
7	<u>833</u>
8	<u>832</u>
9	<u>629</u>
10	<u>673</u>
11	<u>832</u>
12	<u>837</u>
13	<u>833</u>
14	<u>823</u>
15	<u>828</u>
16	<u>832</u>

DAY AVERAGE DAILY POWER LEVEL  
(MWe-Net)

17	<u>848</u>
18	<u>796</u>
19	<u>823</u>
20	<u>819</u>
21	<u>822</u>
22	<u>134</u>
23	<u>782</u>
24	<u>810</u>
25	<u>820</u>
26	<u>821</u>
27	<u>812</u>
28	<u>820</u>
29	<u>459</u>
30	<u>778</u>
31	<u>813</u>

## INSTRUCTIONS

On this format, list the average daily unit power level in MWe-Net for each day in the reporting month. Compute to the nearest whole megawatt.

## UNIT SHUTDOWNS AND POWER REDUCTIONS

DOCKET NO. 50-302

UNIT NAME FLCRP-3

DATE 4/5/84

COMPLETED BY M.W. Culver

TELEPHONE (904) 795-3802

REPORT MONTH 3/84

No.	Date	Type <sup>1</sup>	Duration (Hours)	Reason <sup>2</sup>	Method of Shutting Down Reactor <sup>3</sup>	Licensee Event Report #	System Code <sup>4</sup>	Component Code <sup>5</sup>	Cause & Corrective Action to Prevent Recurrence
84-12	840303	F	22.1	A	N/A	N/A	HC	HTEXCH	Reduced power to 75% FP to locate a saltwater leak in "A" waterbox.
84-13	840308	S	41.0	B	N/A	N/A	HC	HTEXCH	Reduced power to 75% FP to clean and epoxy coat the "A" waterbox outlet tube sheet to prevent leakage.
84-14	840322	F	15.7	A	1	N/A	CB	MOTORX	Shutdown to investigate a high oil level alarm on RCP-B.
84-15	840329	F	6.0	A	1	N/A	CB	MOTORX	Shutdown to investigate a high oil level alarm on RCP-B.

1  
F: Forced  
S: Scheduled

2  
Reason:  
A-Equipment Failure (Explain)  
B-Maintenance or Test  
C-Refueling  
D-Regulatory Restriction  
E-Operator Training & License Examination  
F-Administrative  
G-Operational Error (Explain)  
H-Other (Explain)

3  
Method:  
1-Manual  
2-Manual Scram.  
3-Automatic Scram.  
4-Other (Explain)

4  
Exhibit G - Instructions  
for Preparation of Data  
Entry Sheets for Licensee  
Event Report (LER) File (NUREG-  
0161)

5  
Exhibit I - Same Source

MONTHLY OPERATIONAL SUMMARY STATEMENT

DOCKET NO. 50-302

UNIT FLCRP-3

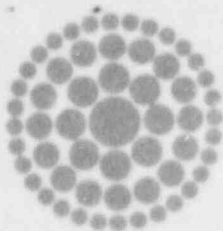
DATE 4/5/84

COMPLETED BY M.W. Culver

TELEPHONE (904) 795-3802

MONTH March 1984

SUMMARY STATEMENT: The unit experienced two minor shutdowns and two power reductions during the month.



**Florida  
Power**  
CORPORATION

April 10, 1984  
3F0484-07

Mr. Richard C. DeYoung, Director  
Office of Inspection and Enforcement  
U.S. Nuclear Regulatory Commission  
Attn: Document Control Desk  
Washington, DC 20555

Subject: Crystal River Unit 3  
Docket No. 50-302  
Operating License No. DPR-72  
Monthly Operating Report

Dear Mr. DeYoung:

Attached are twelve (12) copies of the Crystal River Unit 3 March 1984 Monthly Operating Report. This report is submitted in accordance with Technical Specification 6.9.1.6.

Sincerely,

G.R. Westafer  
Manager, Nuclear Operations  
Licensing and Fuel Management

DVH:feb

Attachments

cc: Mr. J.P. O'Reilly  
Regional Administrator, Region II  
Office of Inspection & Enforcement  
U.S. Nuclear Regulatory Commission  
101 Marietta Street N.W., Suite 2900  
Atlanta, GA 30303

IE-24  
1/1