



Northern Indiana Public Service Company

Nuclear Staff
RR #3, Box 501
Chesterton, IN 46304
January 19, 1979

BAILLY GENERATING STATION N-1

Mr. Ronald Ballard
Environmental Projects Branch No. 1
Directorate of Licensing
U.S. Nuclear Regulatory Commission
Washington, D.C. 20545

RE: NORTHERN INDIANA PUBLIC SERVICE COMPANY
BAILLY GENERATING STATION NUCLEAR 1
DOCKET 50-367

Dear Mr. Ballard:

Enclosed herewith are ten (10) copies of the following:

1. Well Charts for 1/3/79 - 1/10/79
2. Bailly Wells Without Recorders for 1/10/79
3. Pond Levels for 1/10/79
4. Pneumatic Pressure Transducers for 1/10/79
5. Water Meter Readings for 1/9/79

Sincerely,

for J. J. Bohn
R. J. Bohn
Manager, Nuclear Staff

MD/me

Enclosures

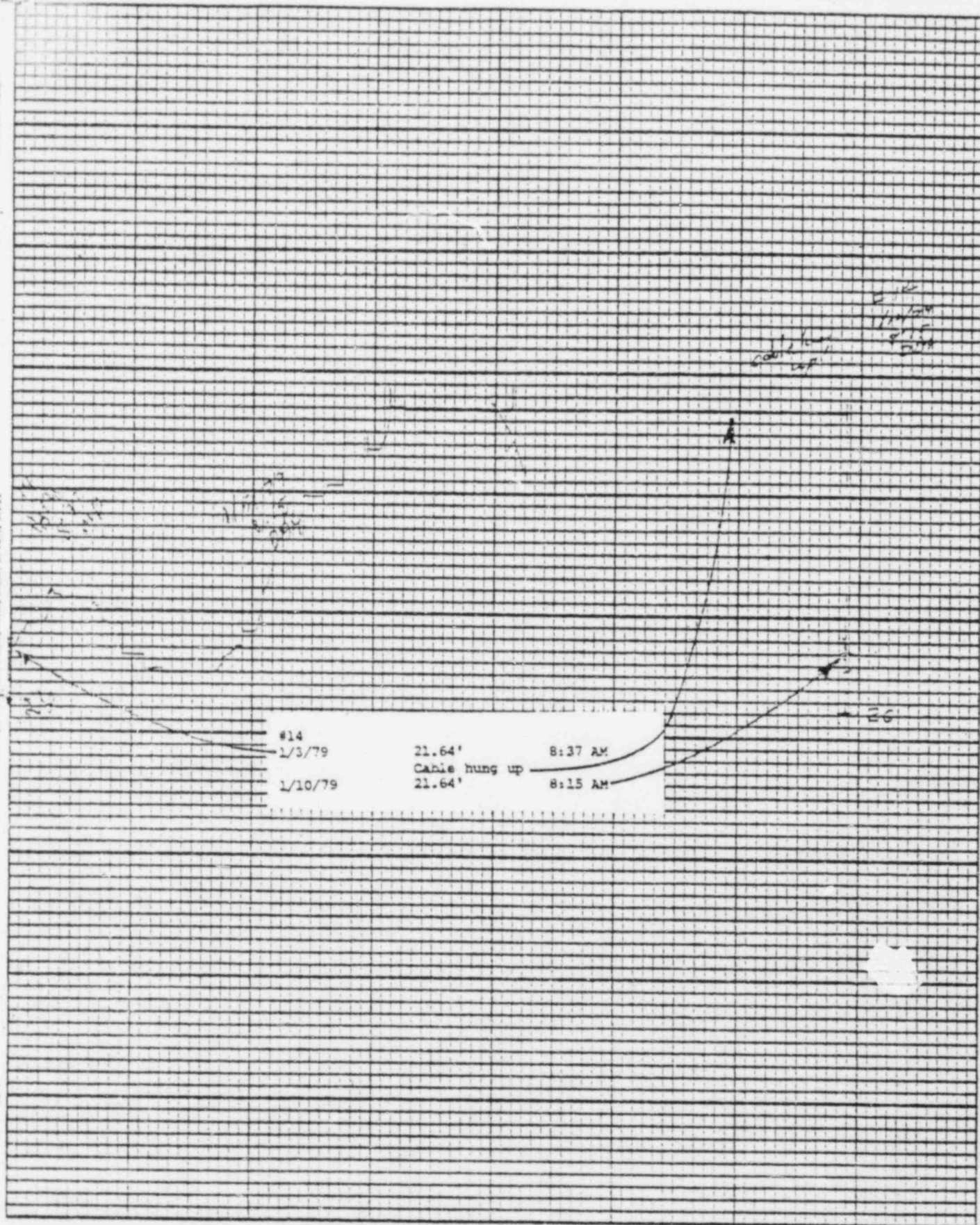
File: Ground Water Observation Monitoring Wells

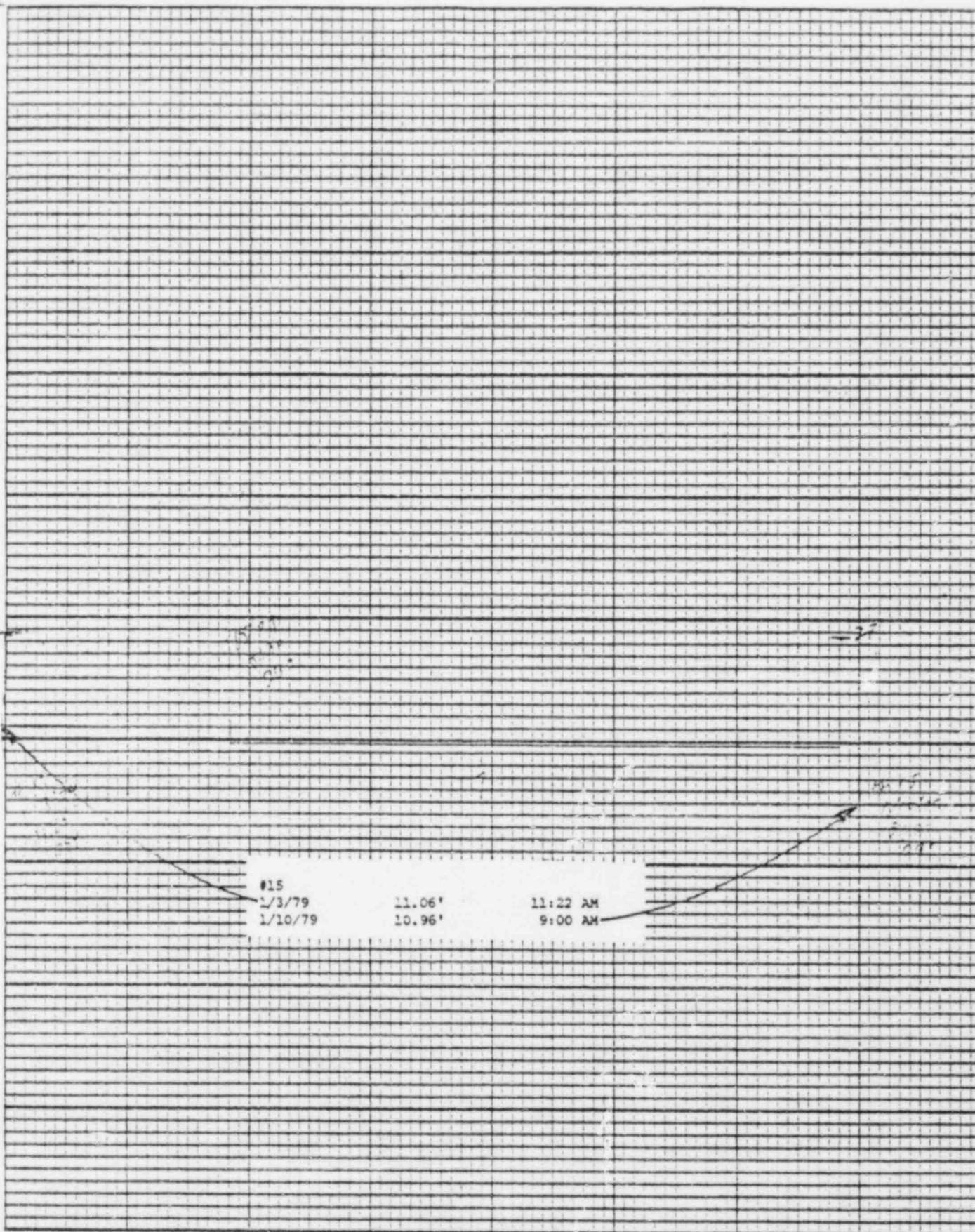
REGULATORY DOCKET FILE COPY

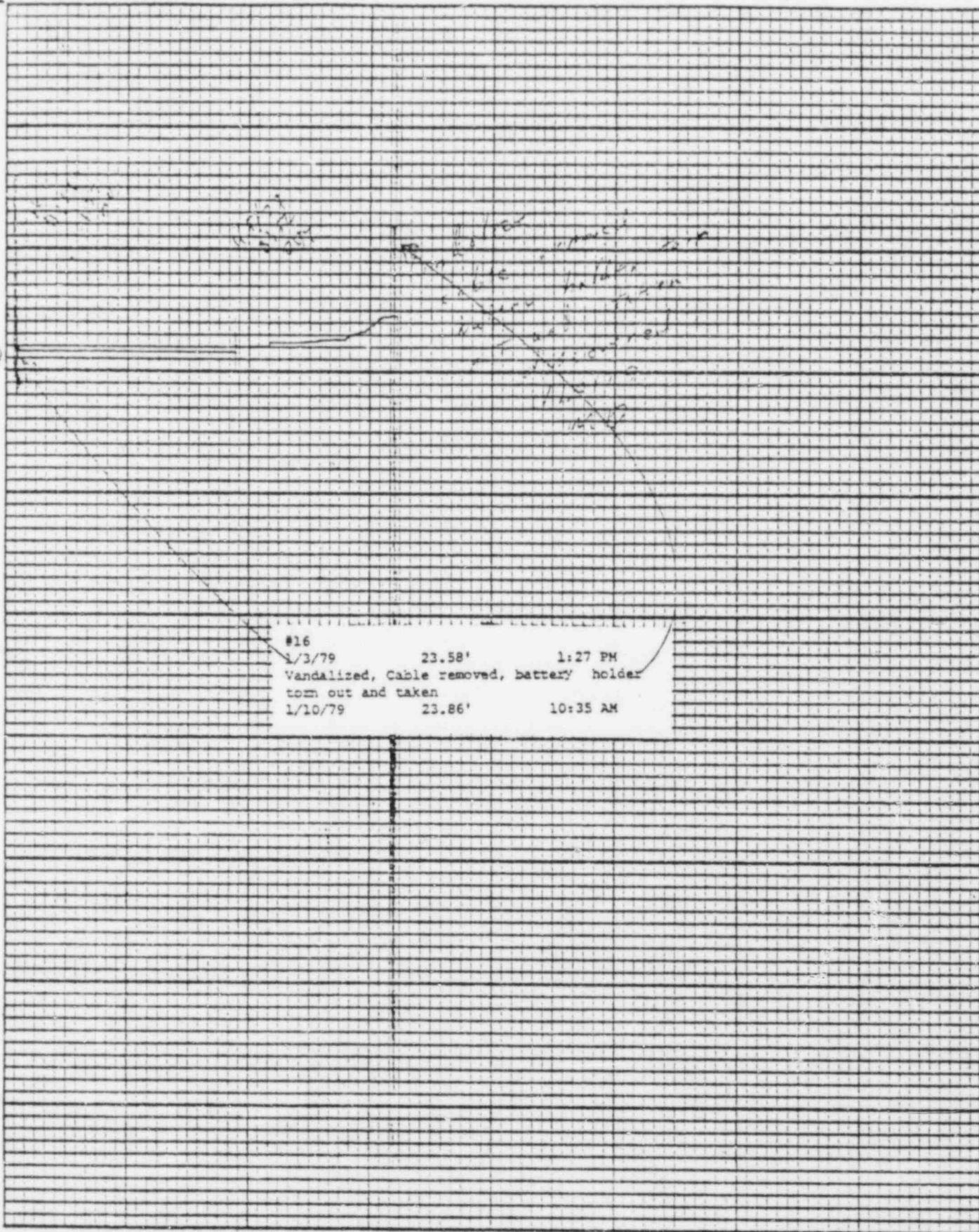
7901300141

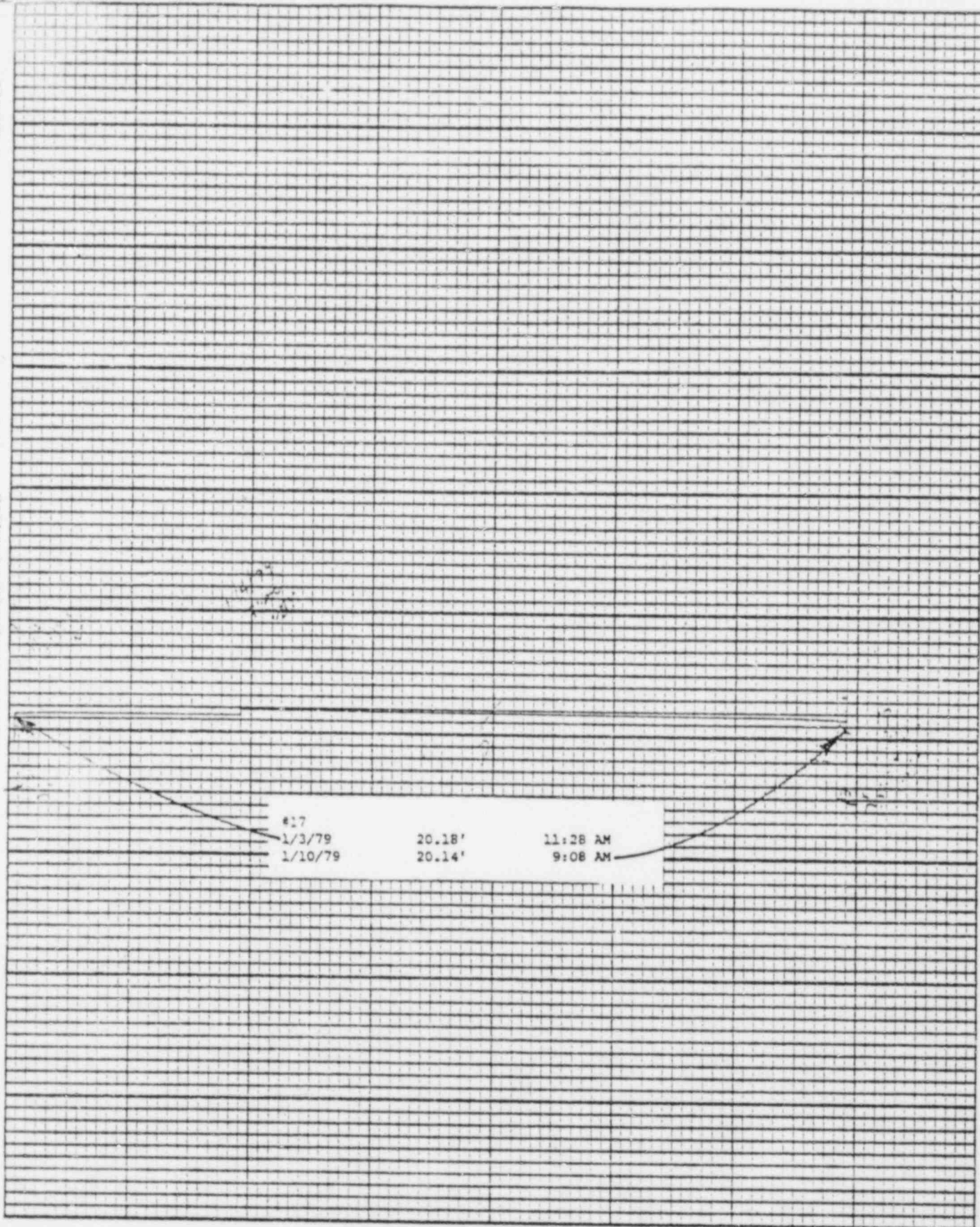
2001300141

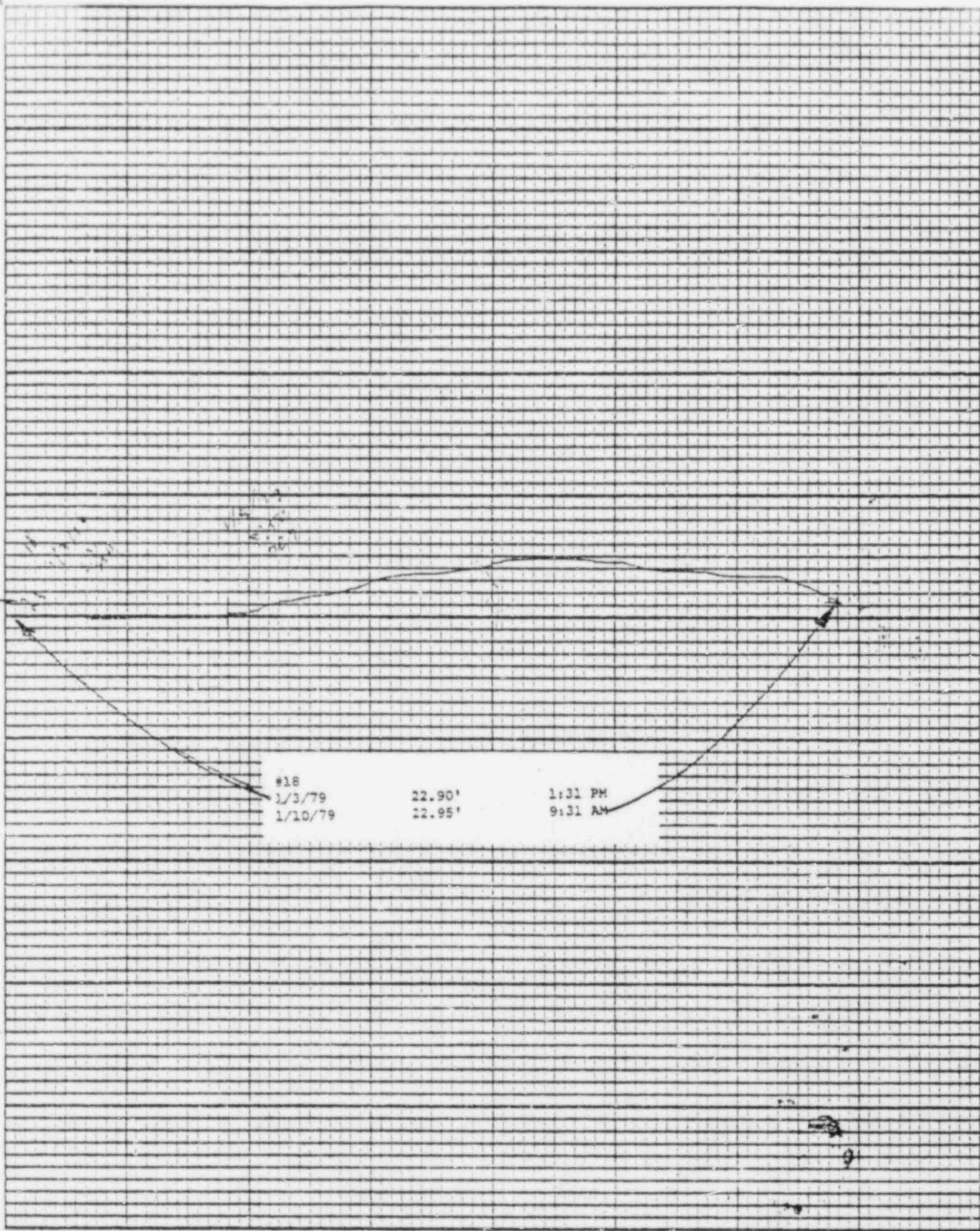
Doot
ES
17/1

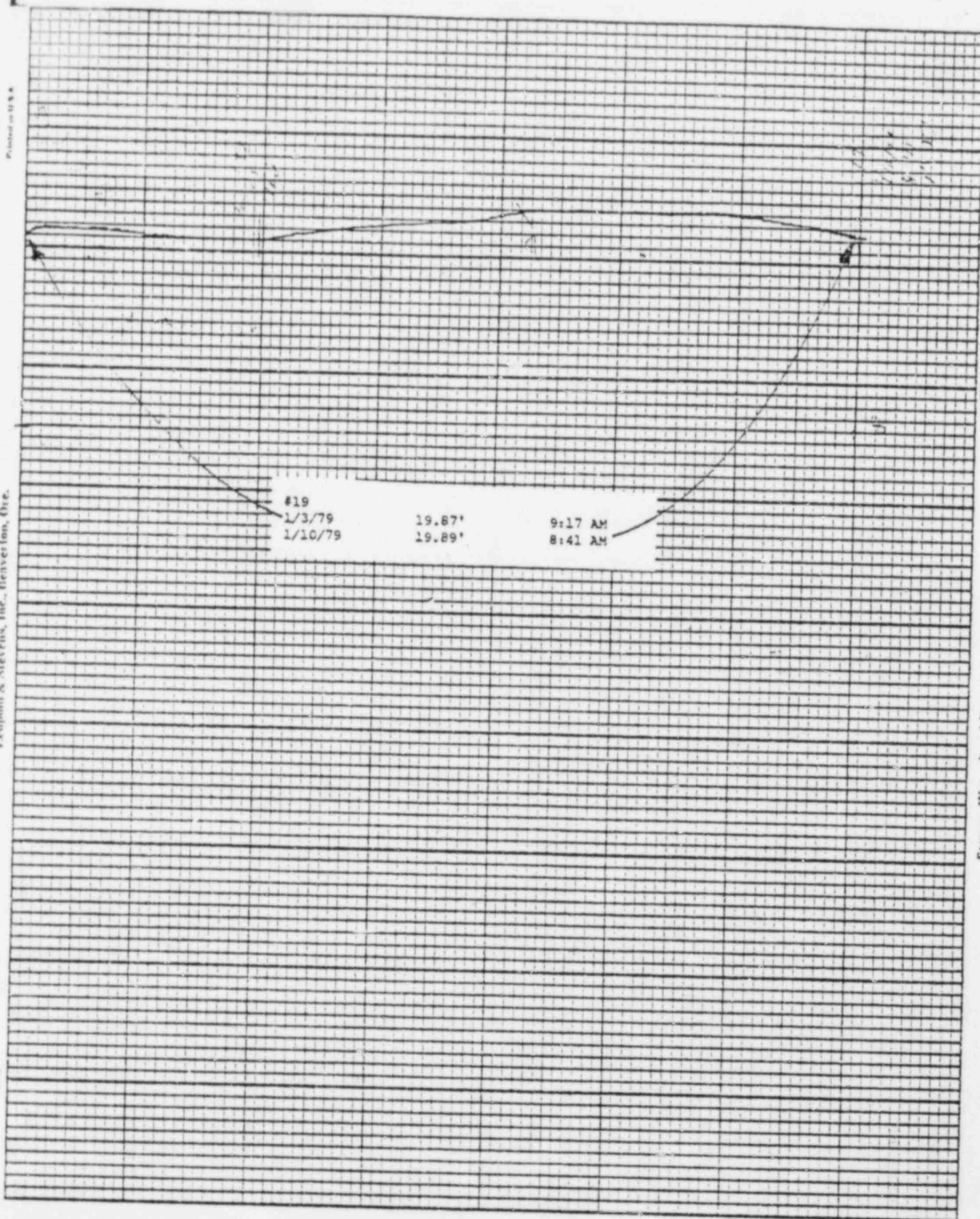








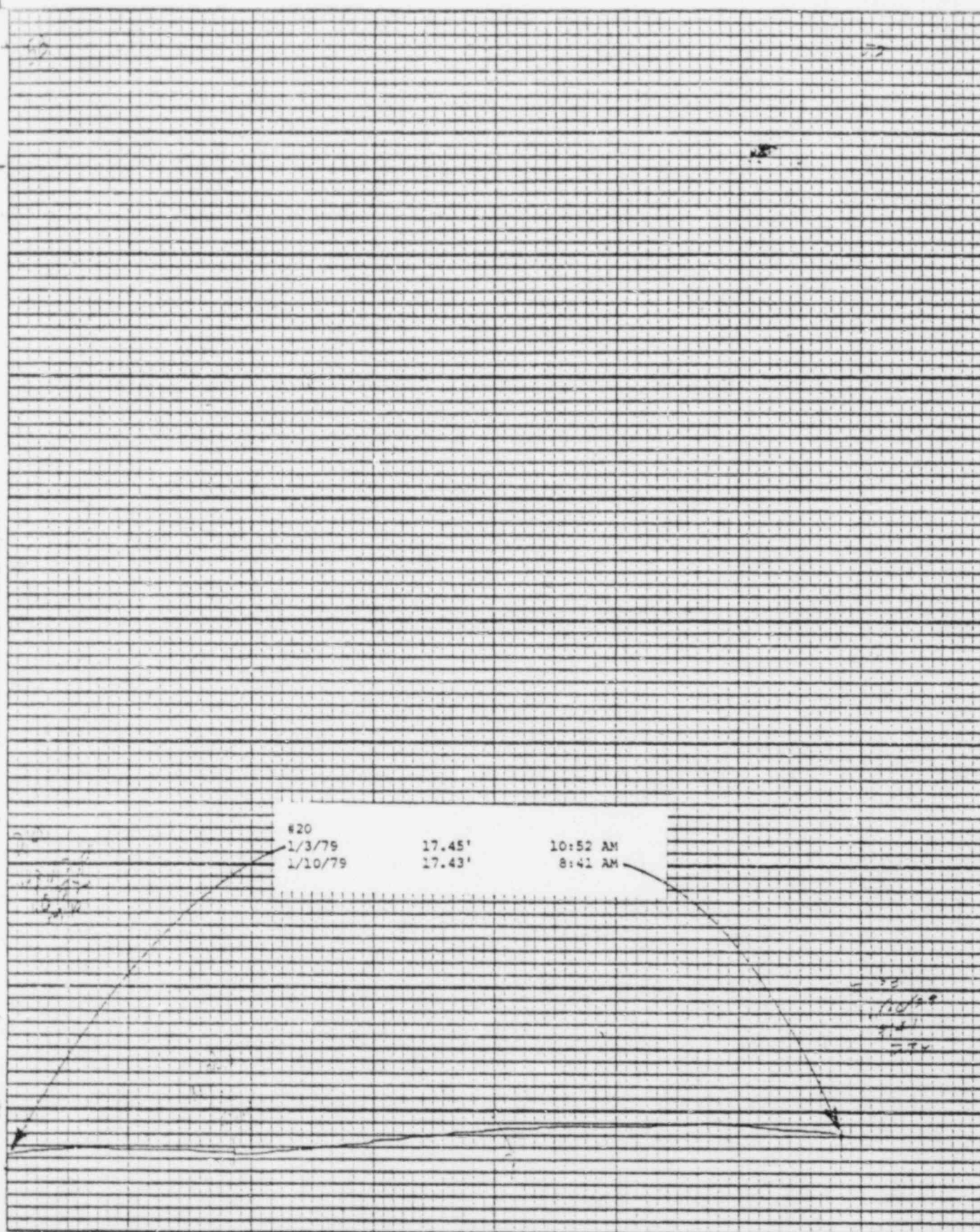


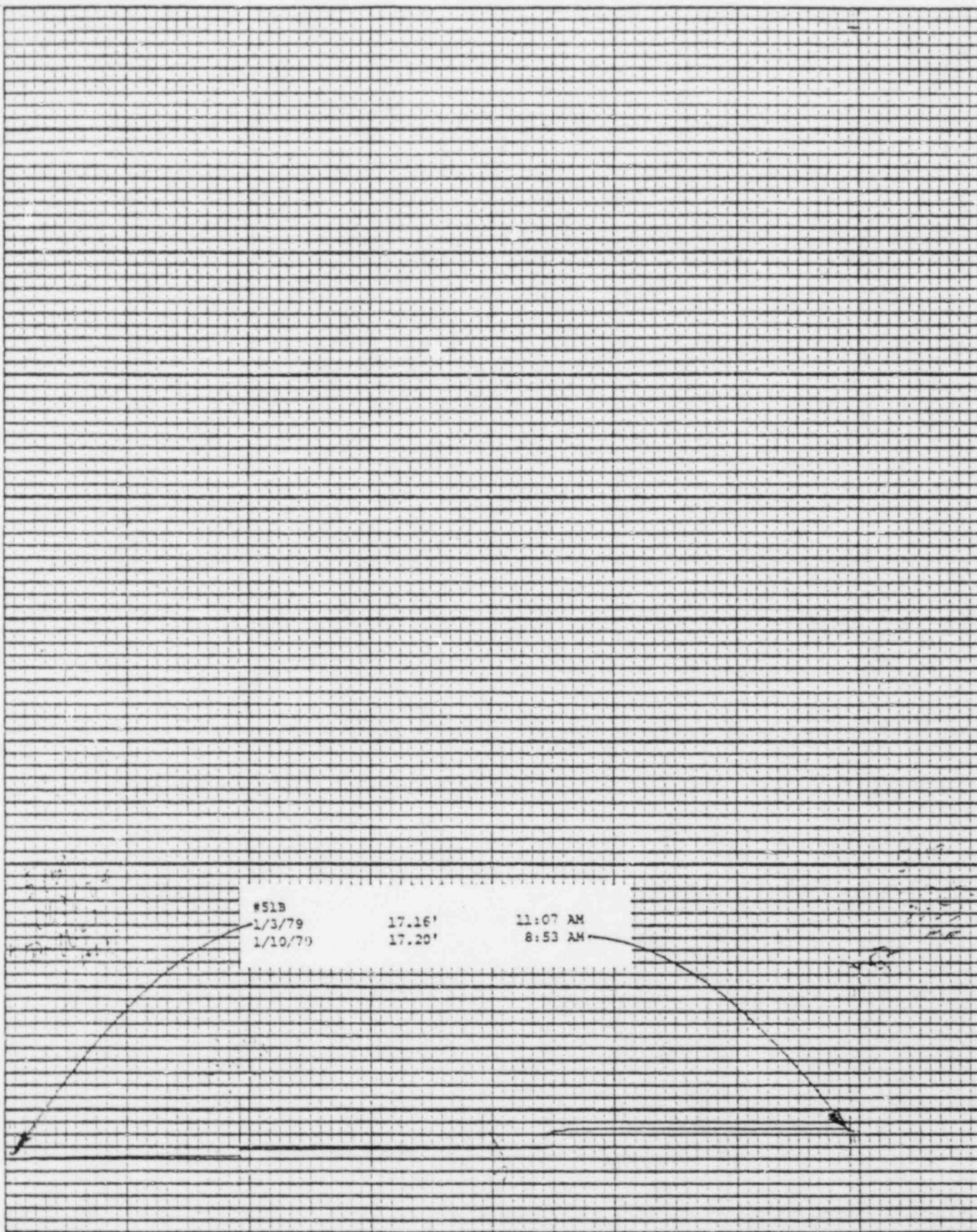


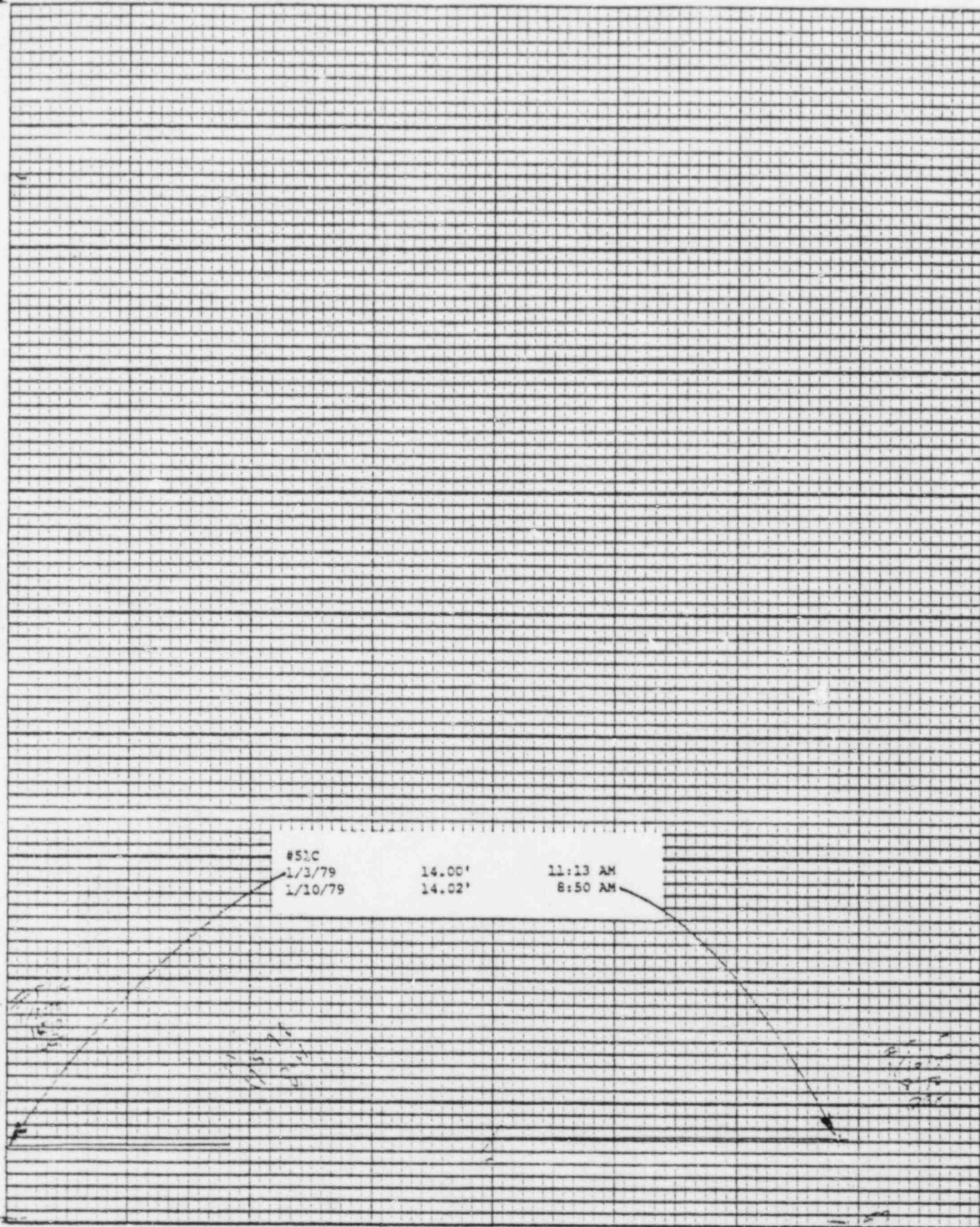
2. *Y*

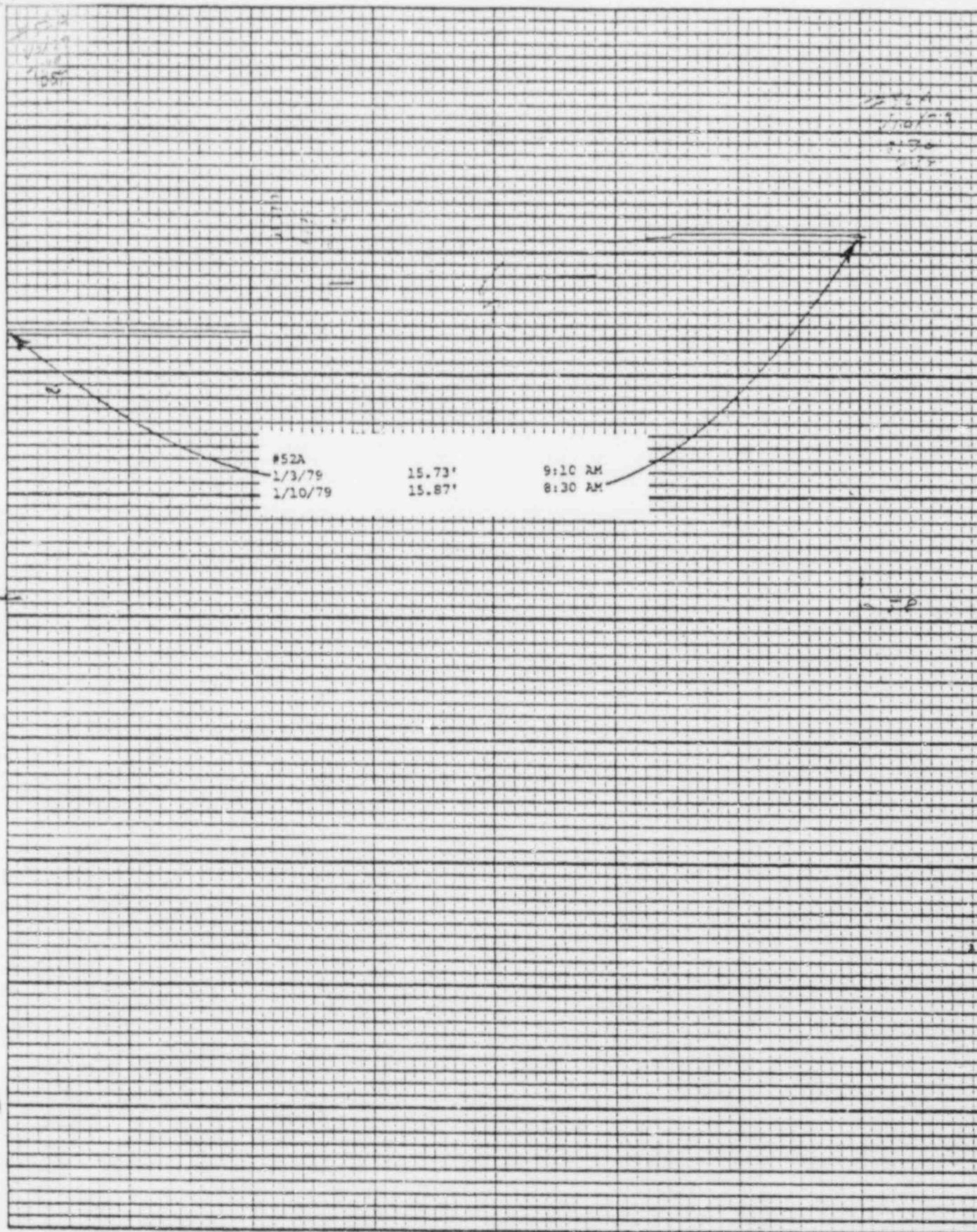
(5)

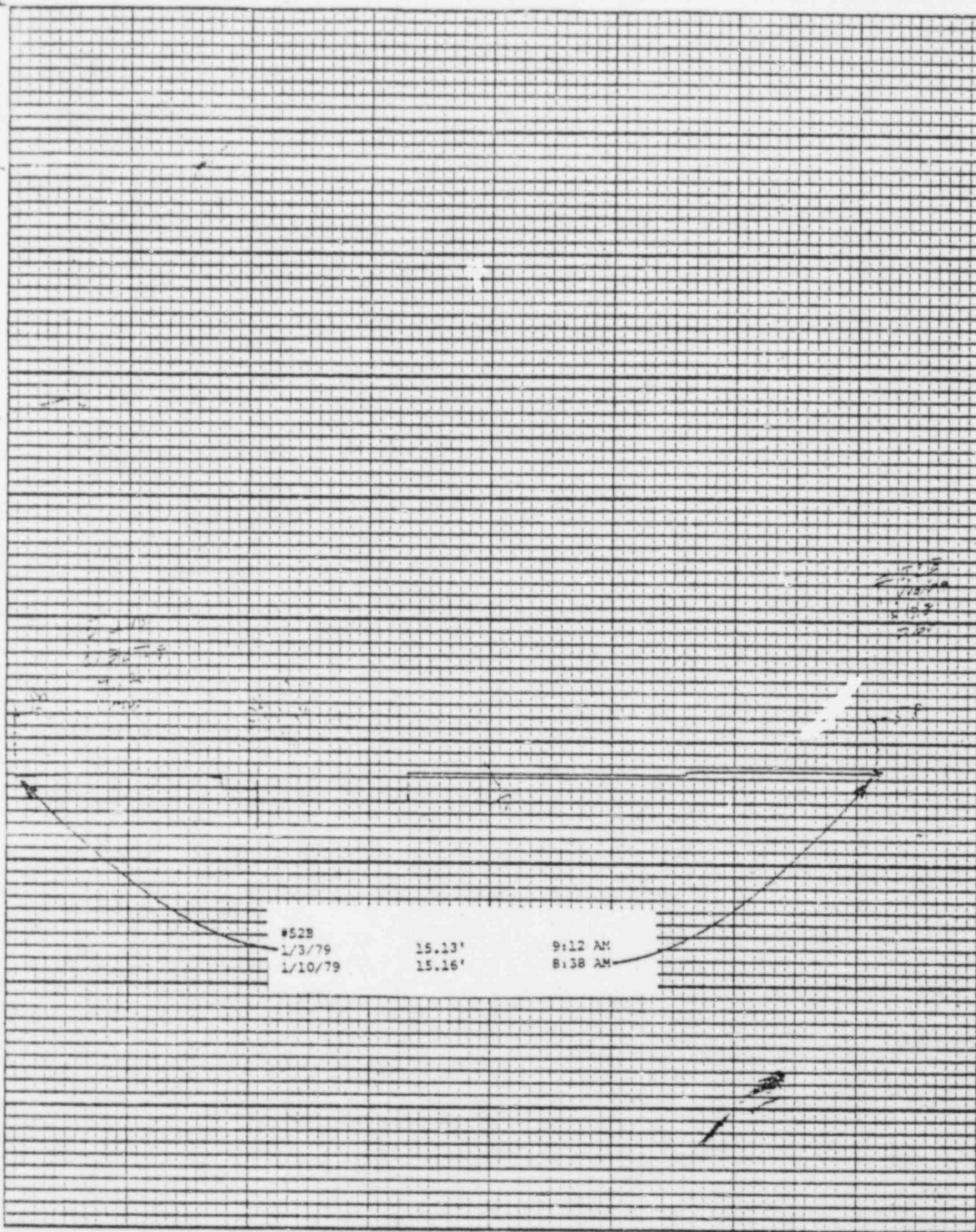
Stevens, Water Level Recorder — Type P

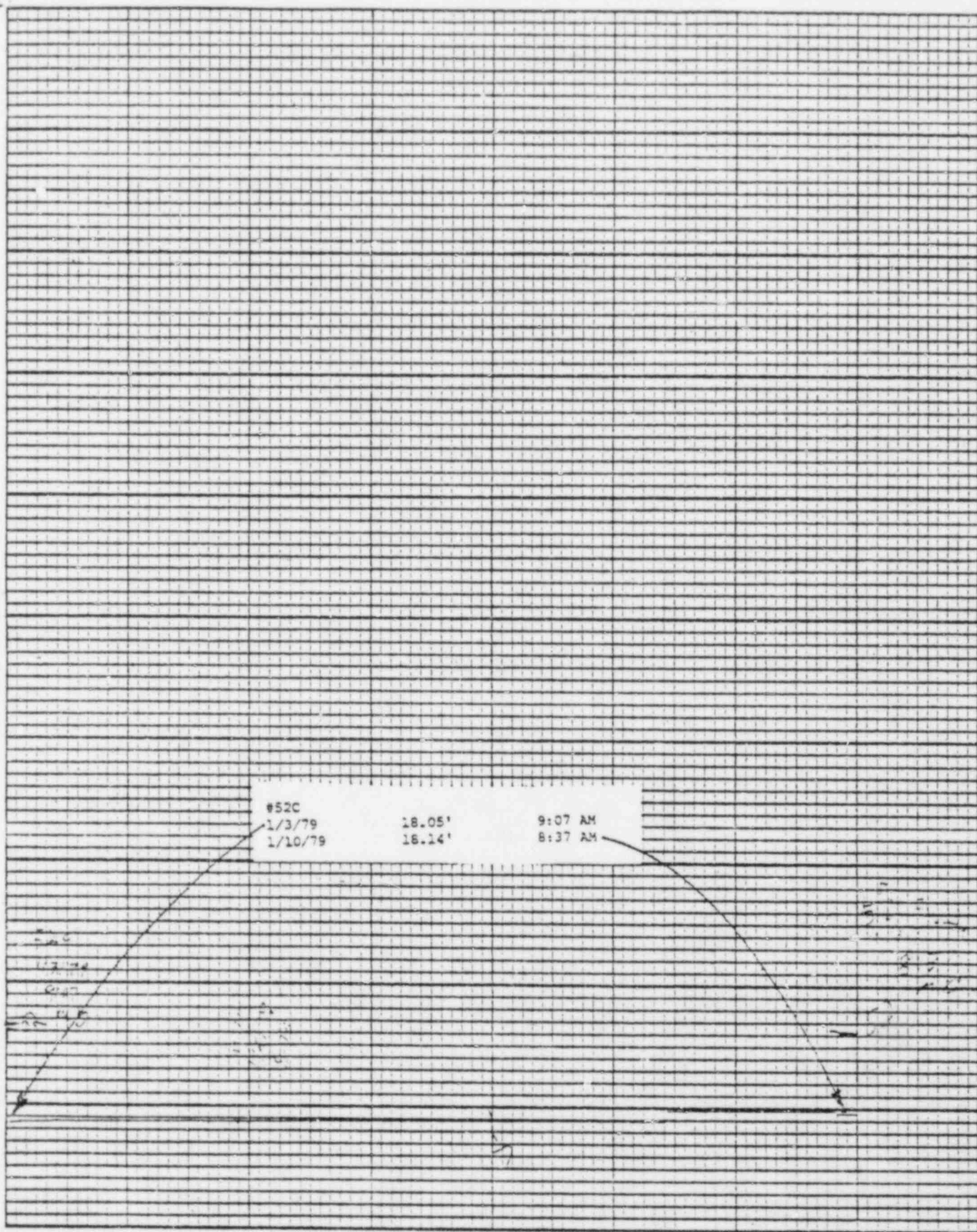


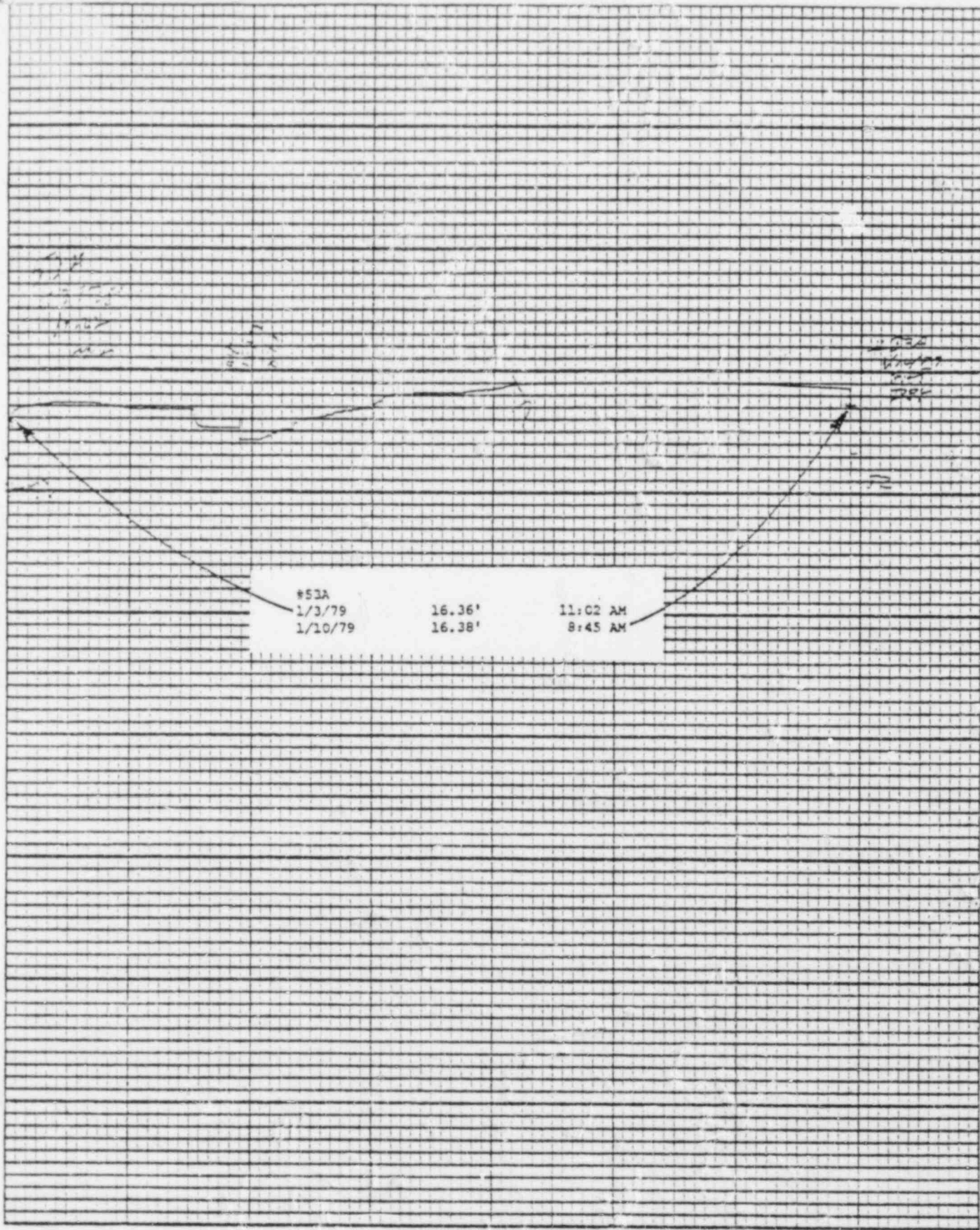


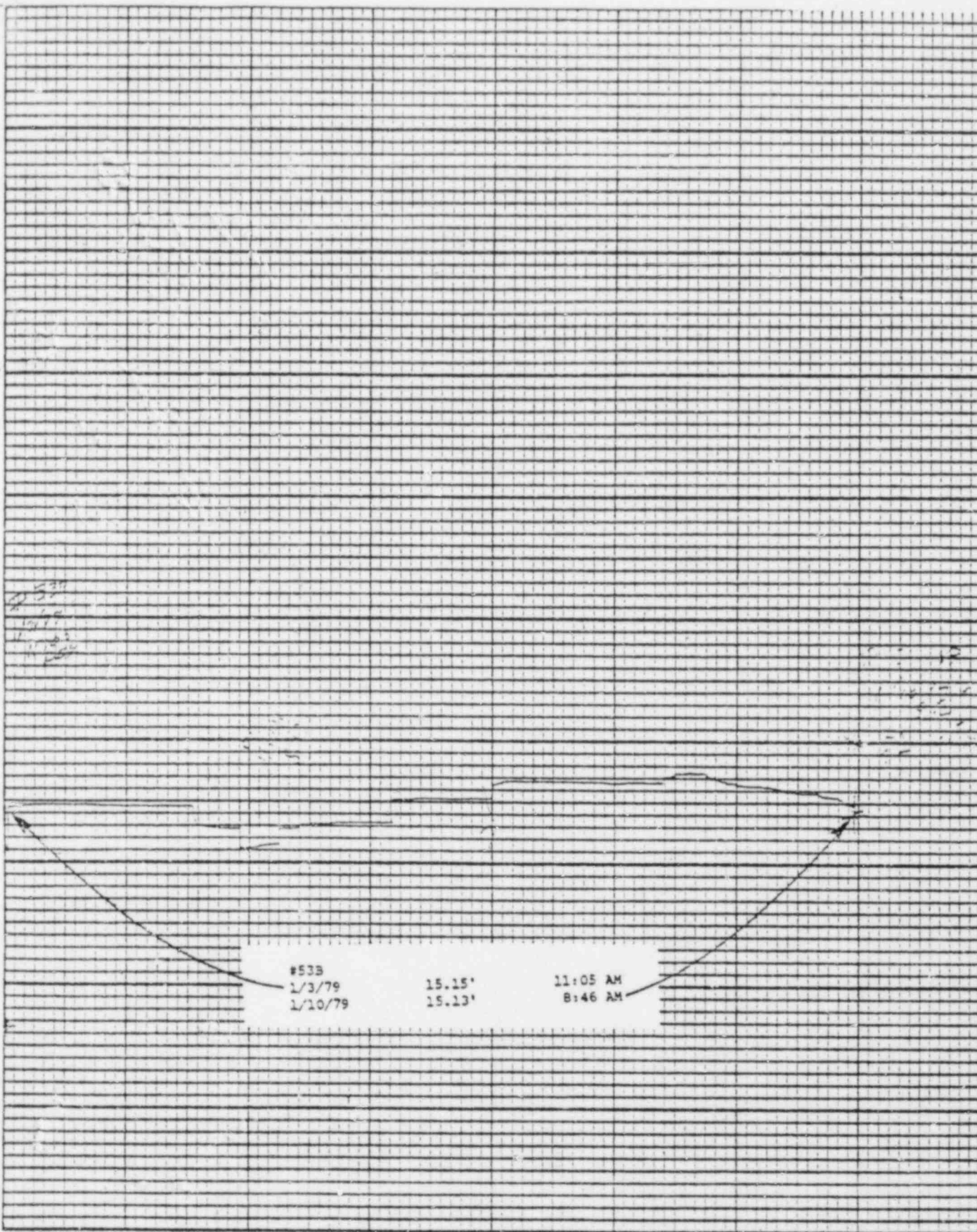


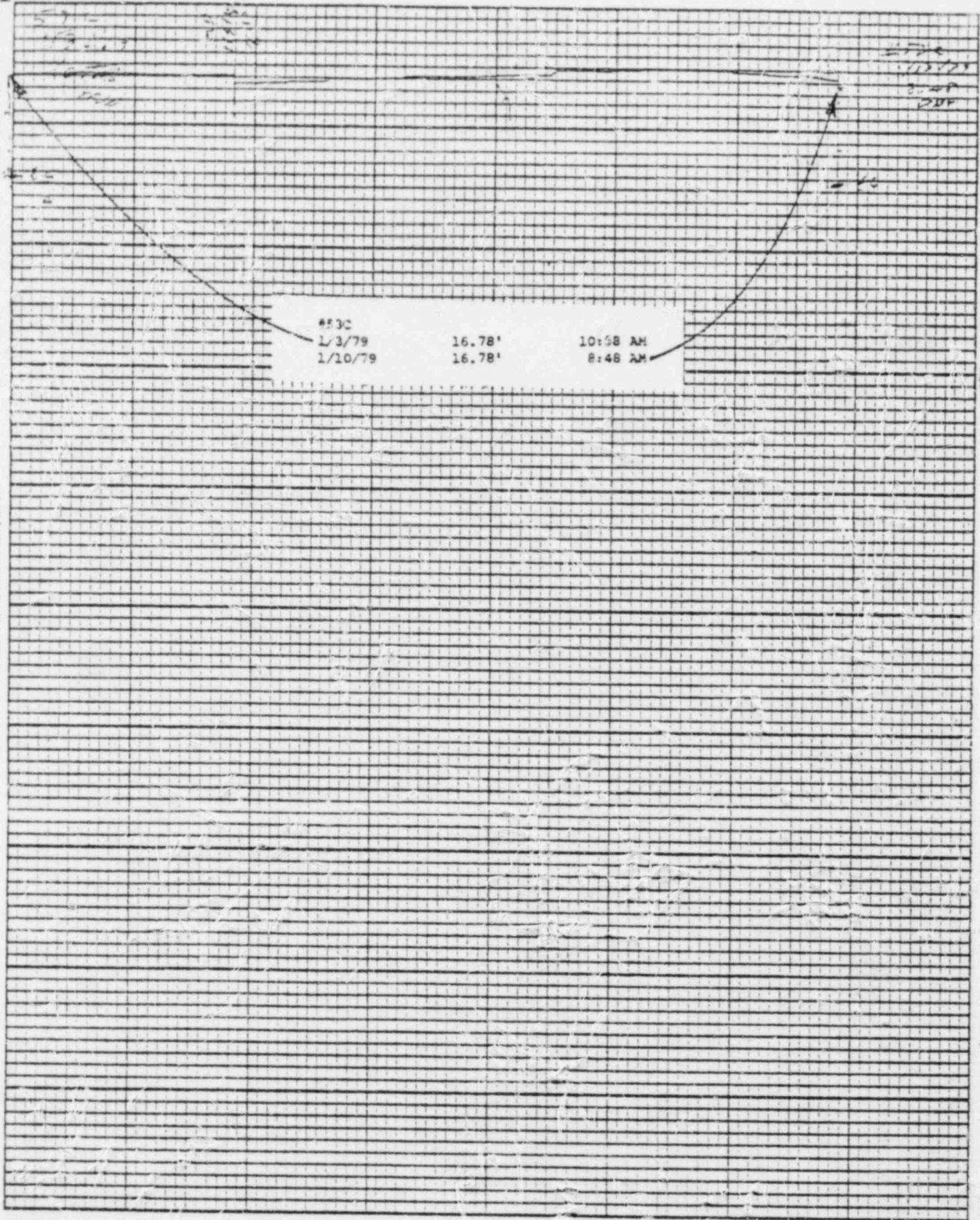


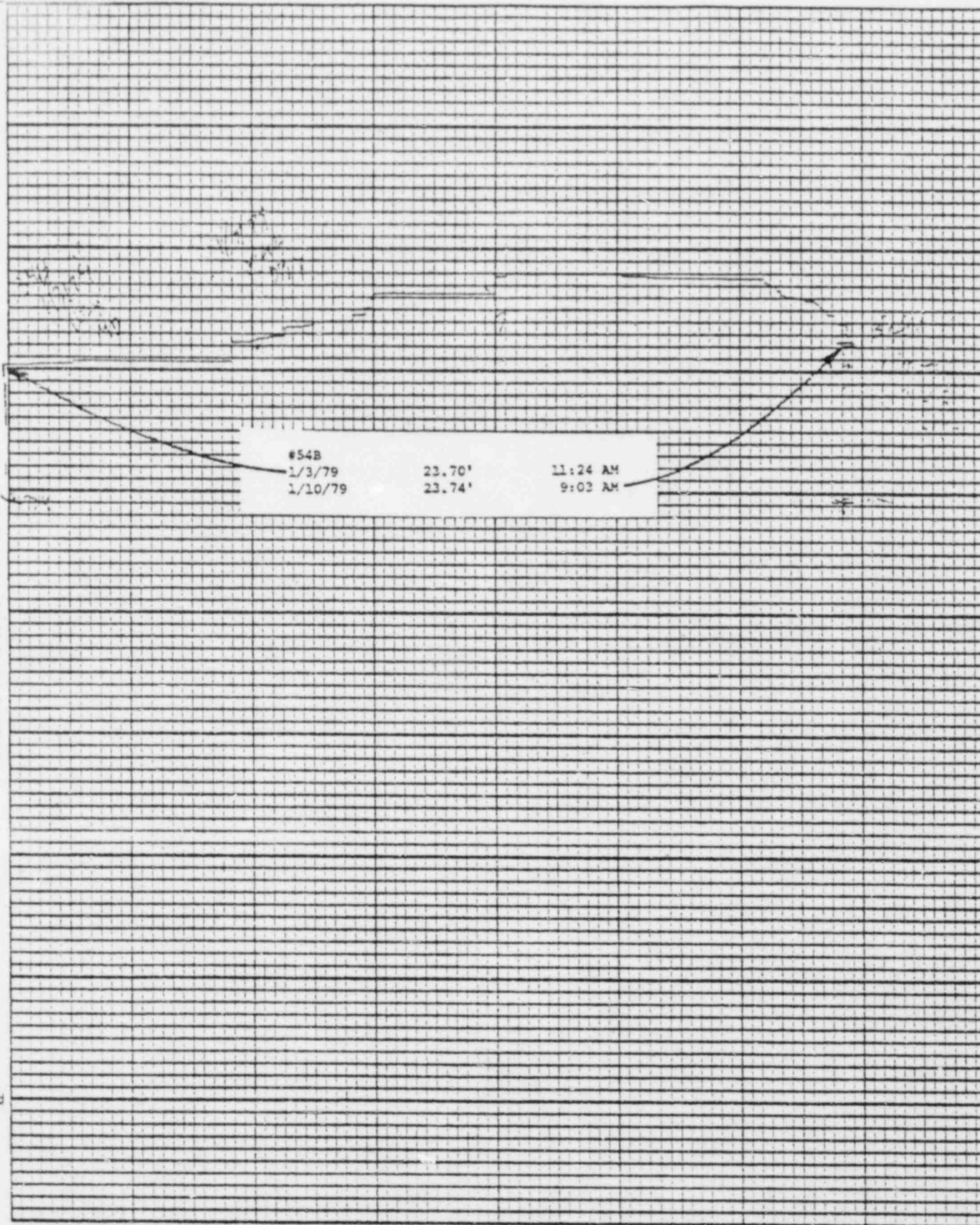






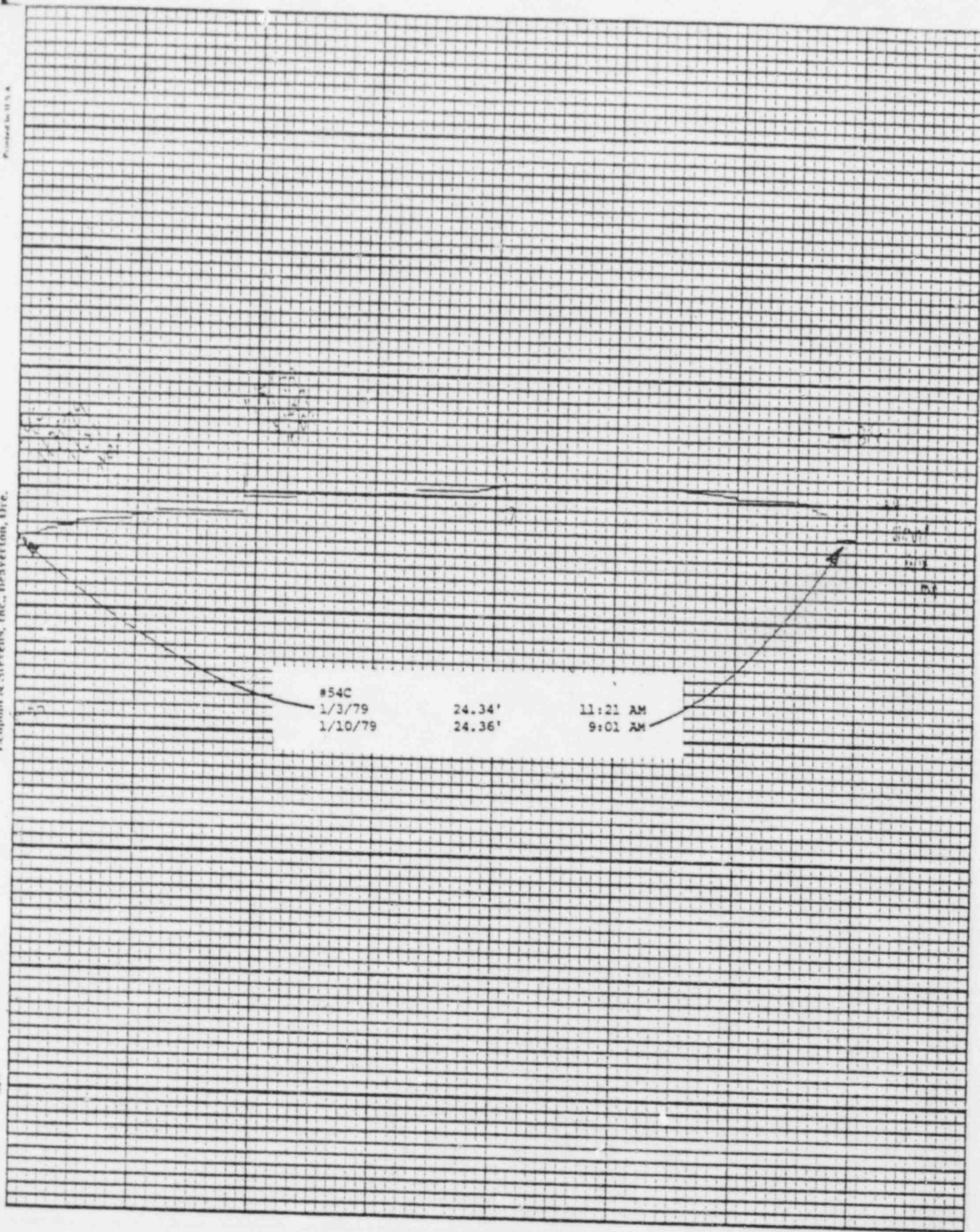






Leupold & Stevens, Inc., Beaverdam, Ore.

Printed in U.S.A.



Stevens Water Level Recorder — Type F

(5)

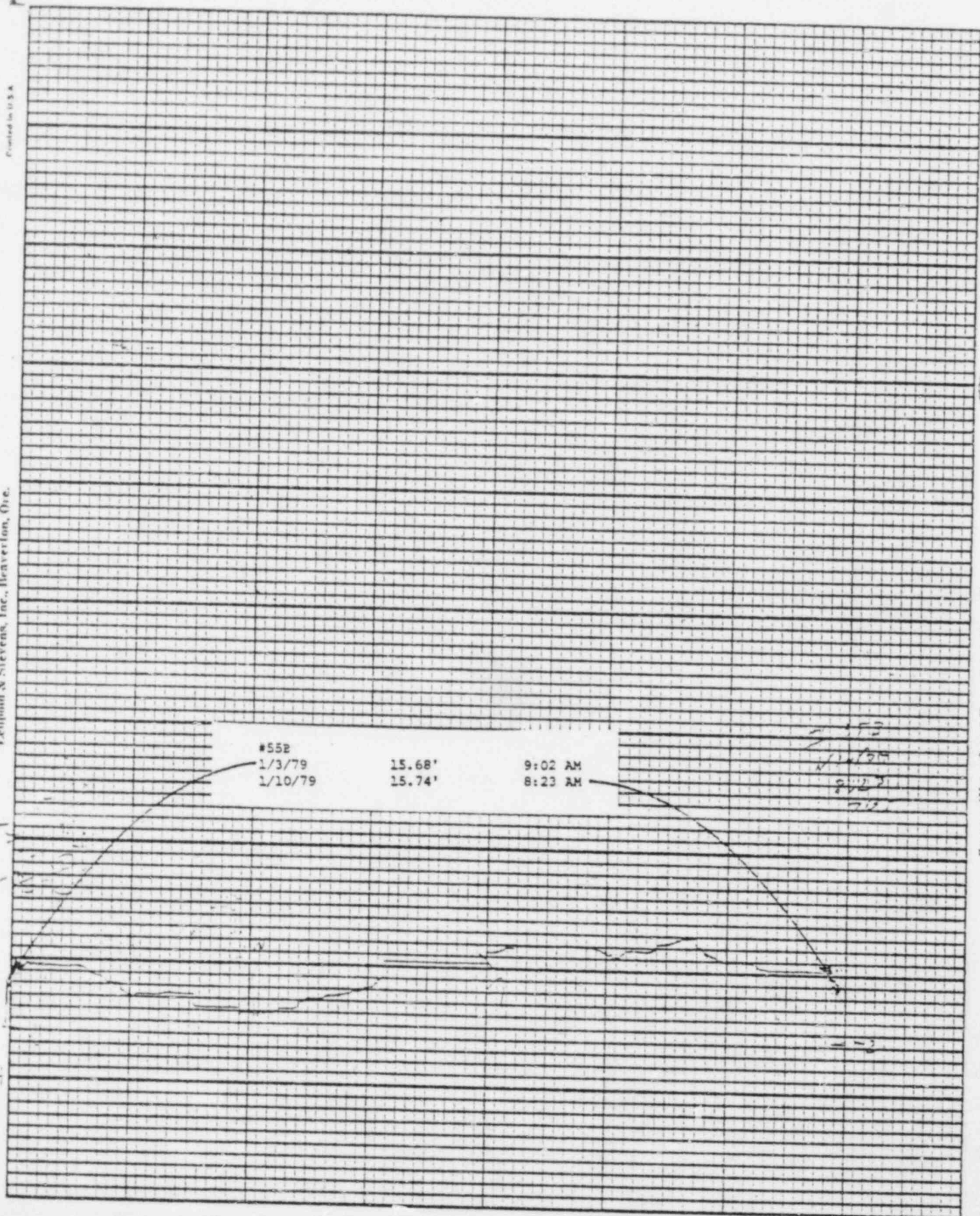
Chart F-1

Leipold & Stevens, Inc., Beaverlton, Ore.

Printed in U.S.A.

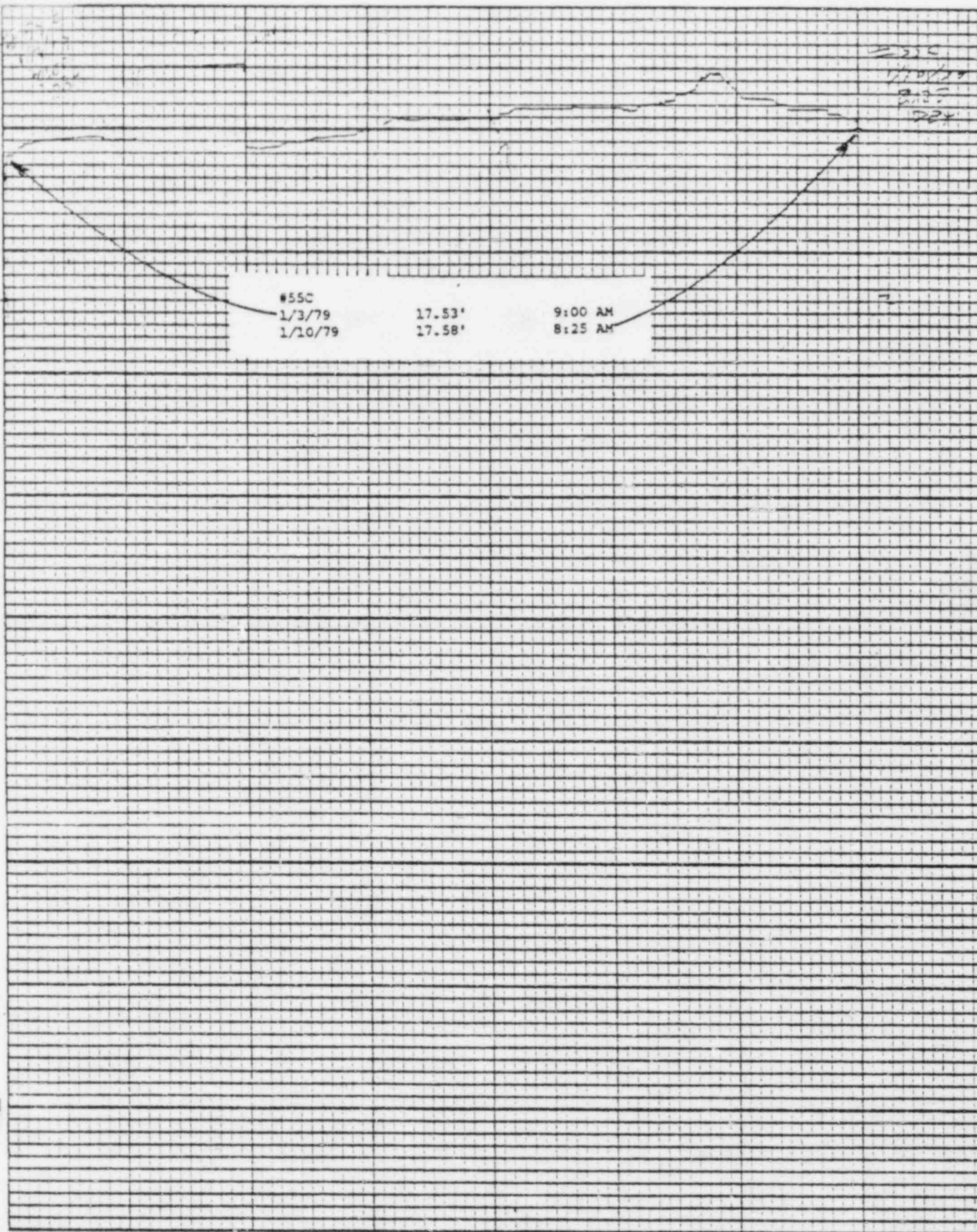
Chart F-1

Stevens Water Level Recorder — Type F



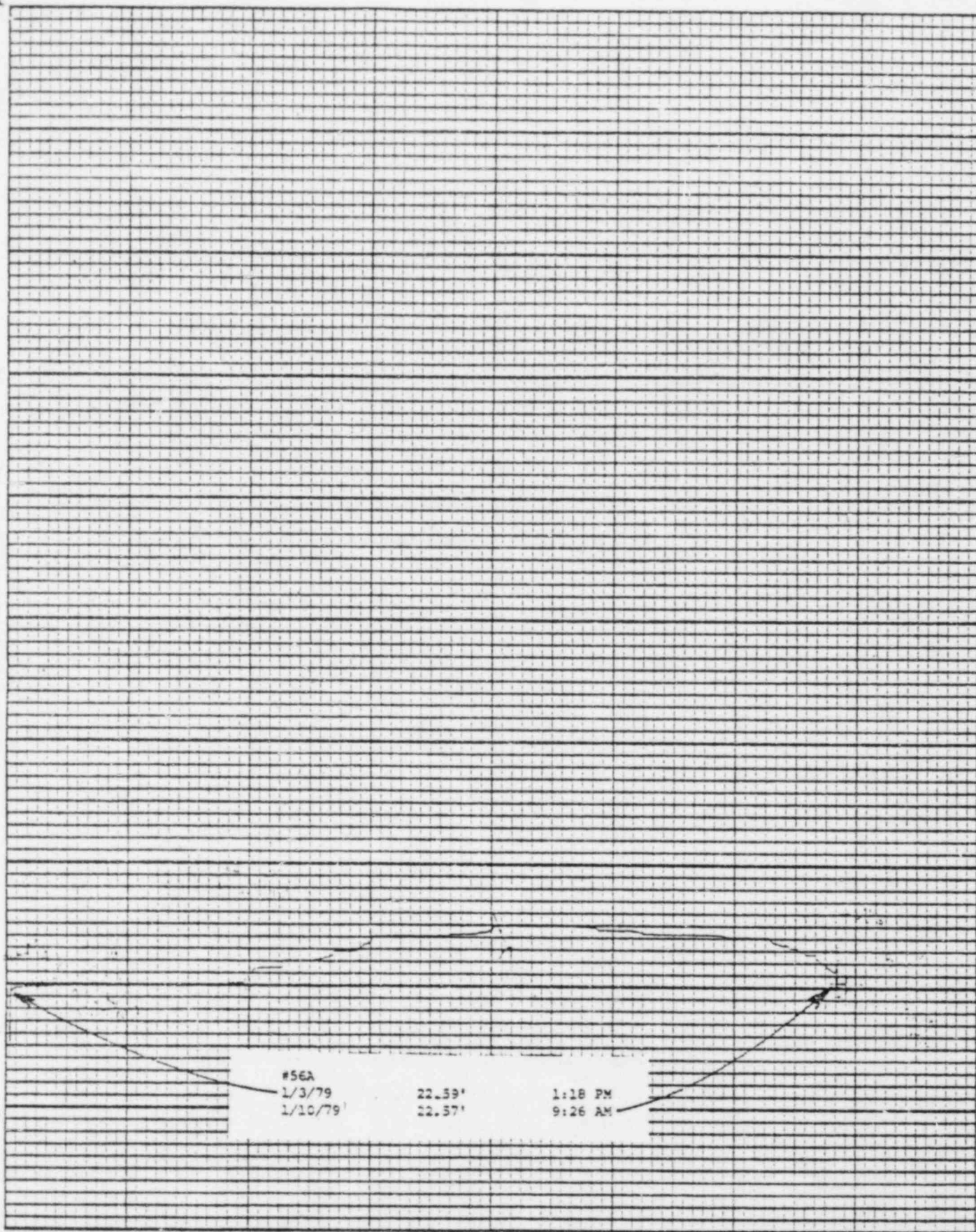
Leupold & Stevens, Inc., Beaverlton, Ore.

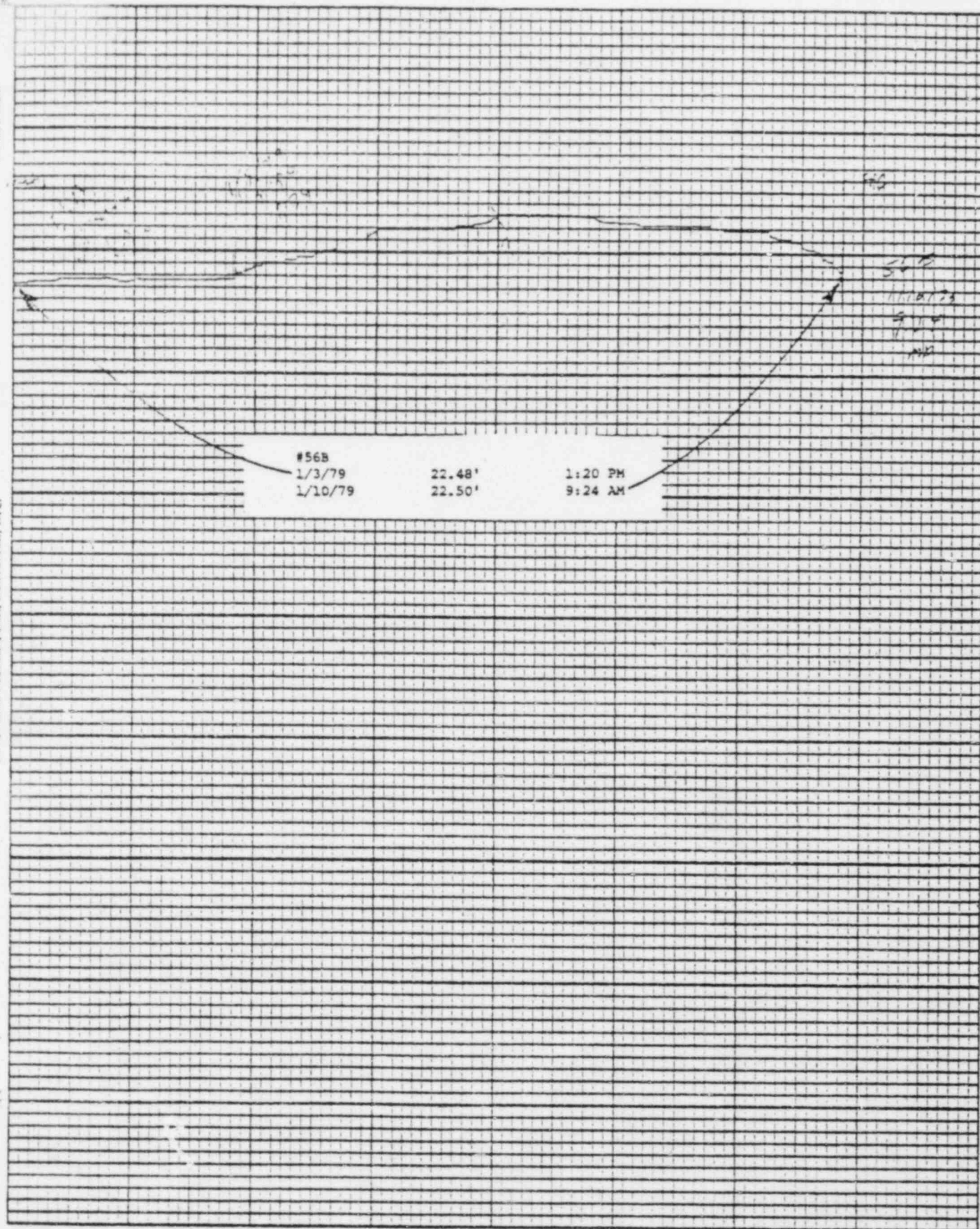
Printed in U.S.A.

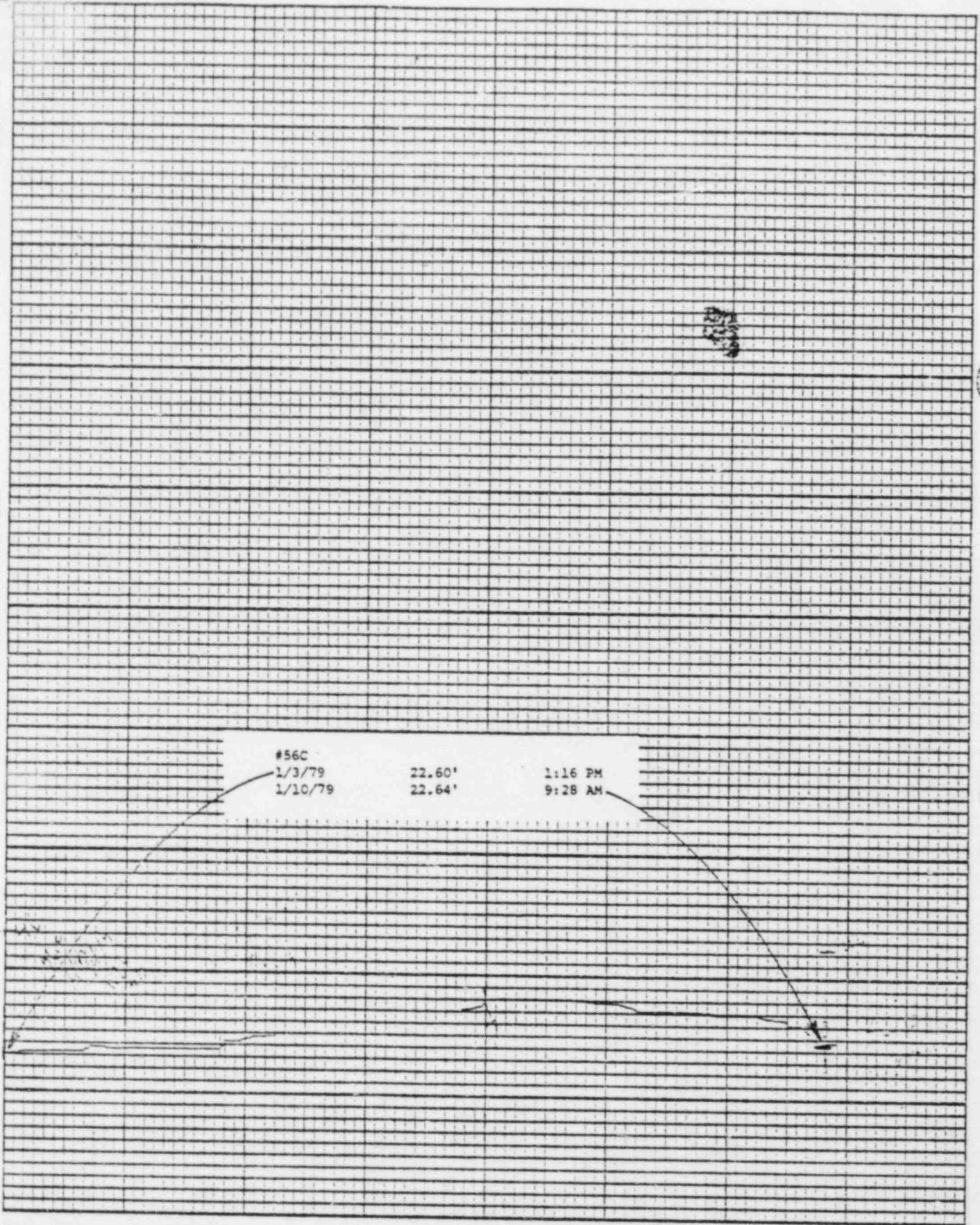


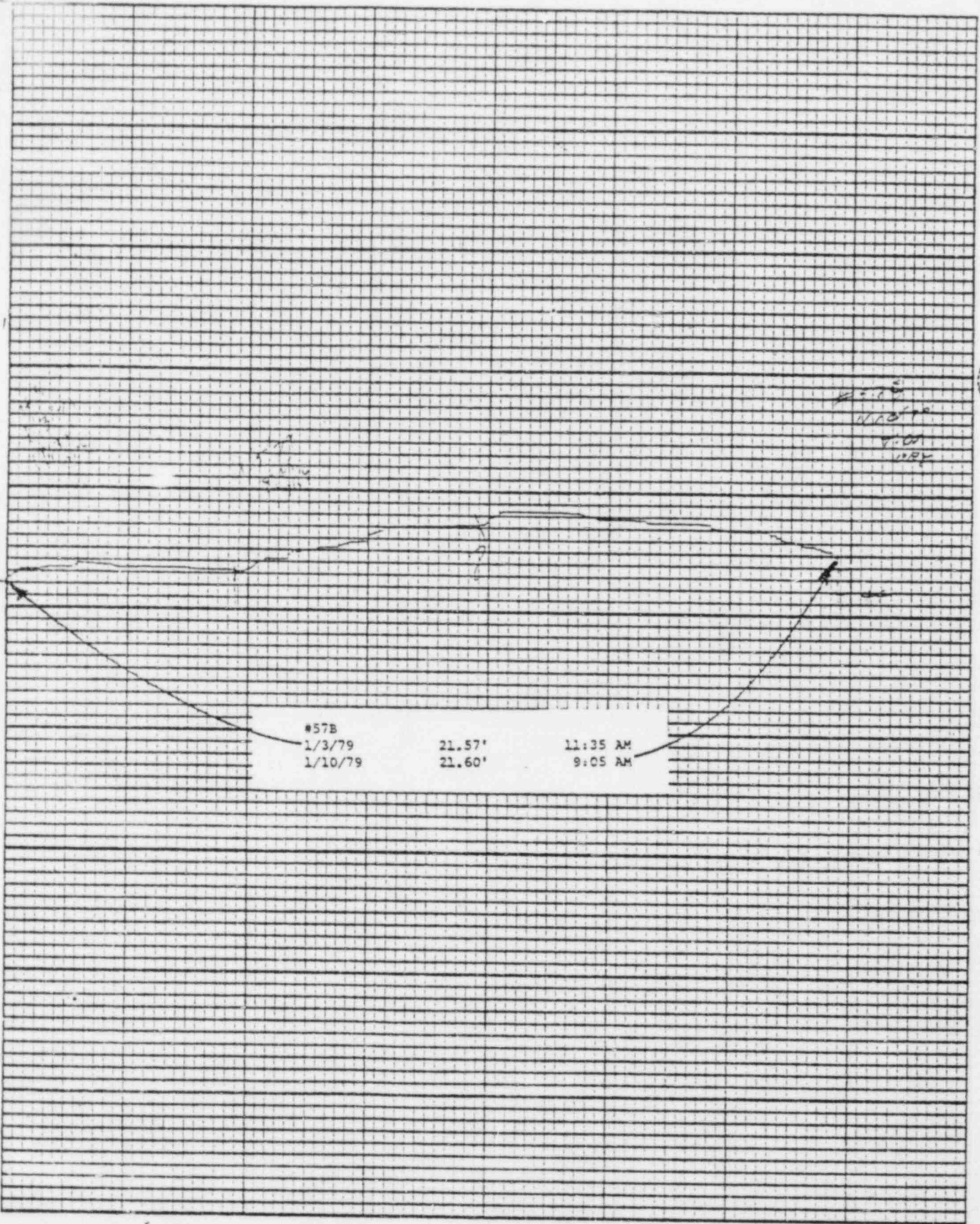
Stevens Water Level Recorder — Type F

Chart F-1

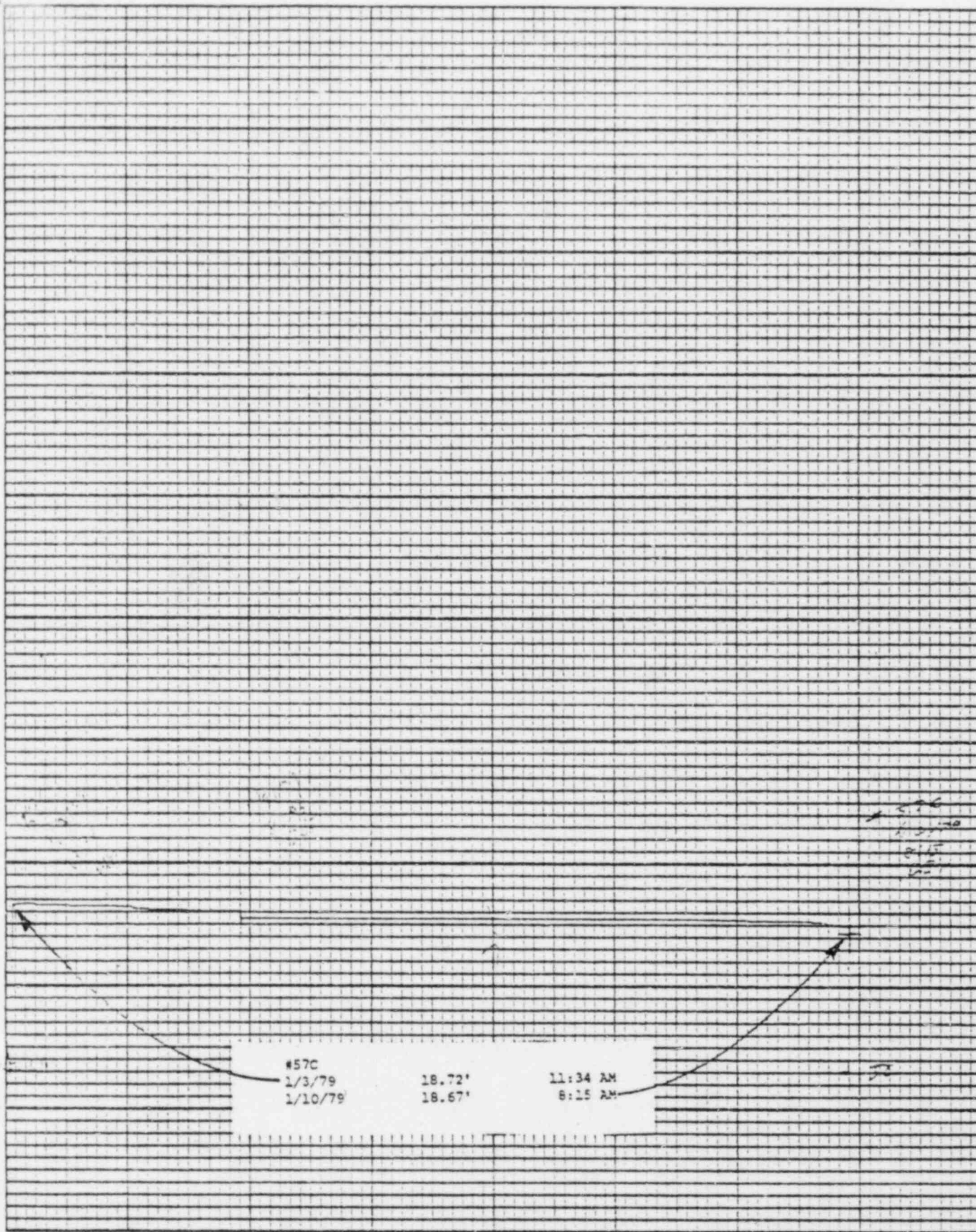








#57B		
1/3/79	21.57'	11:35 AM
1/10/79	21.60'	9:05 AM



Printed in U.S.A.

Leupold & Stevens, Inc., Beaverton, Ore.

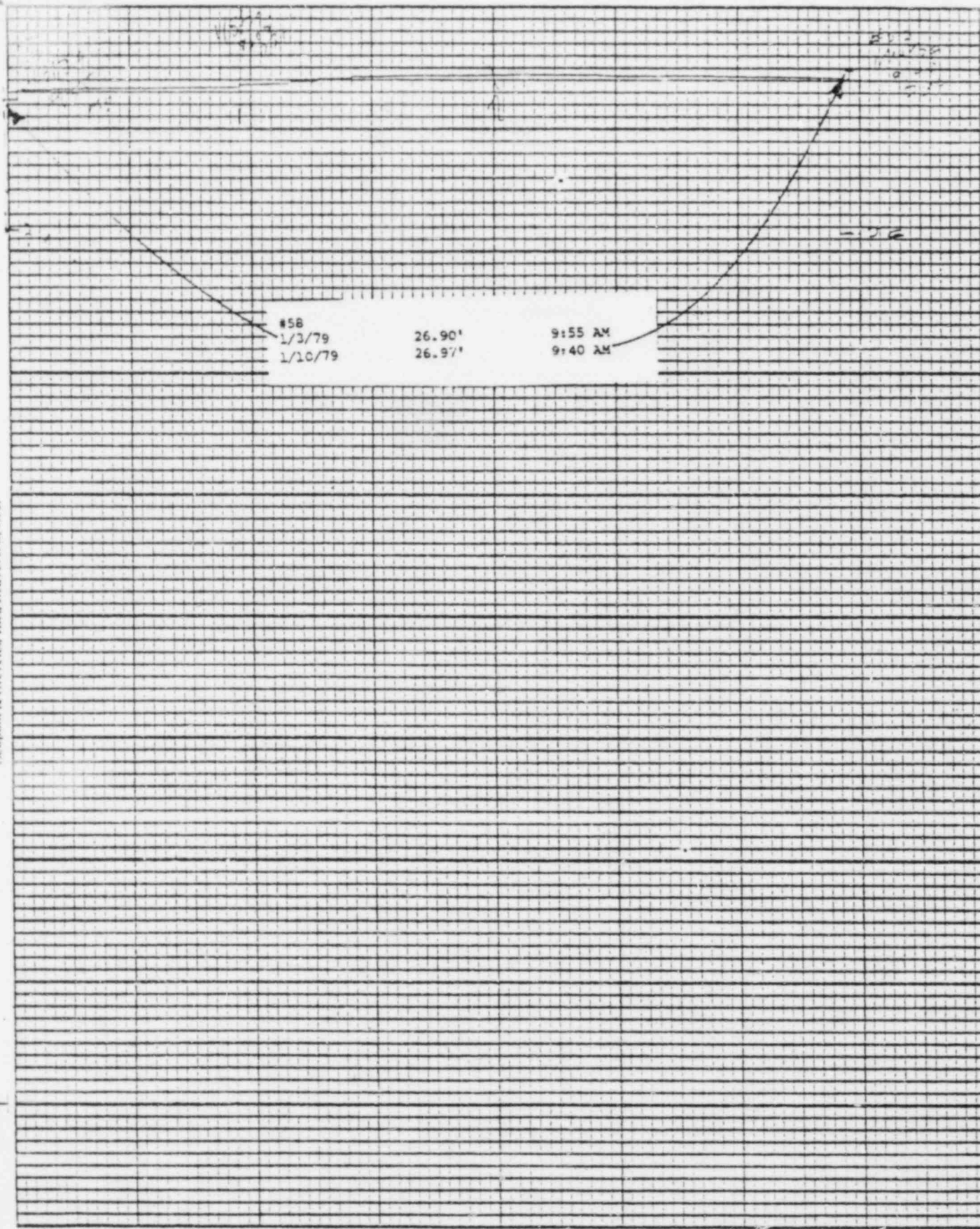
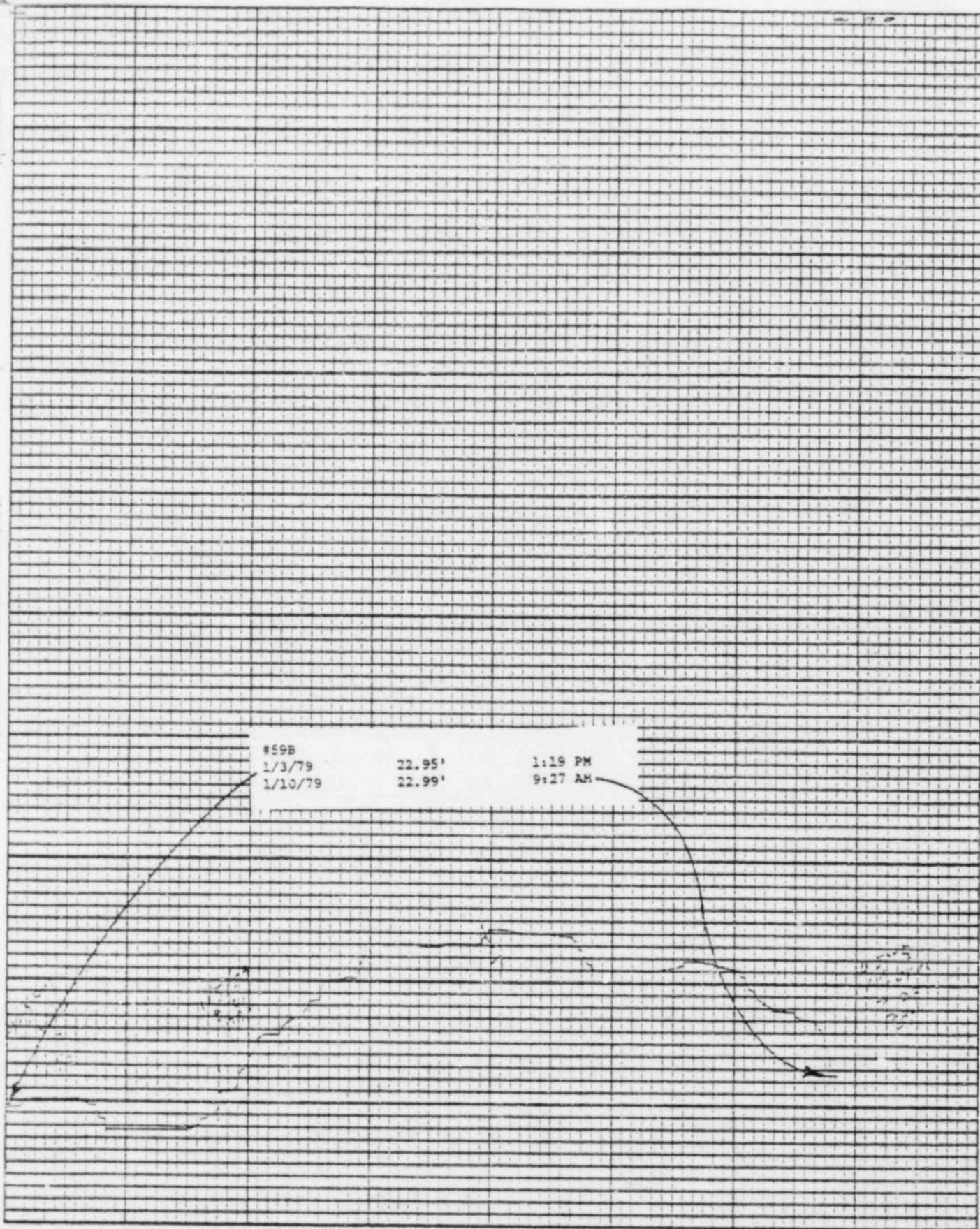


Chart F-1

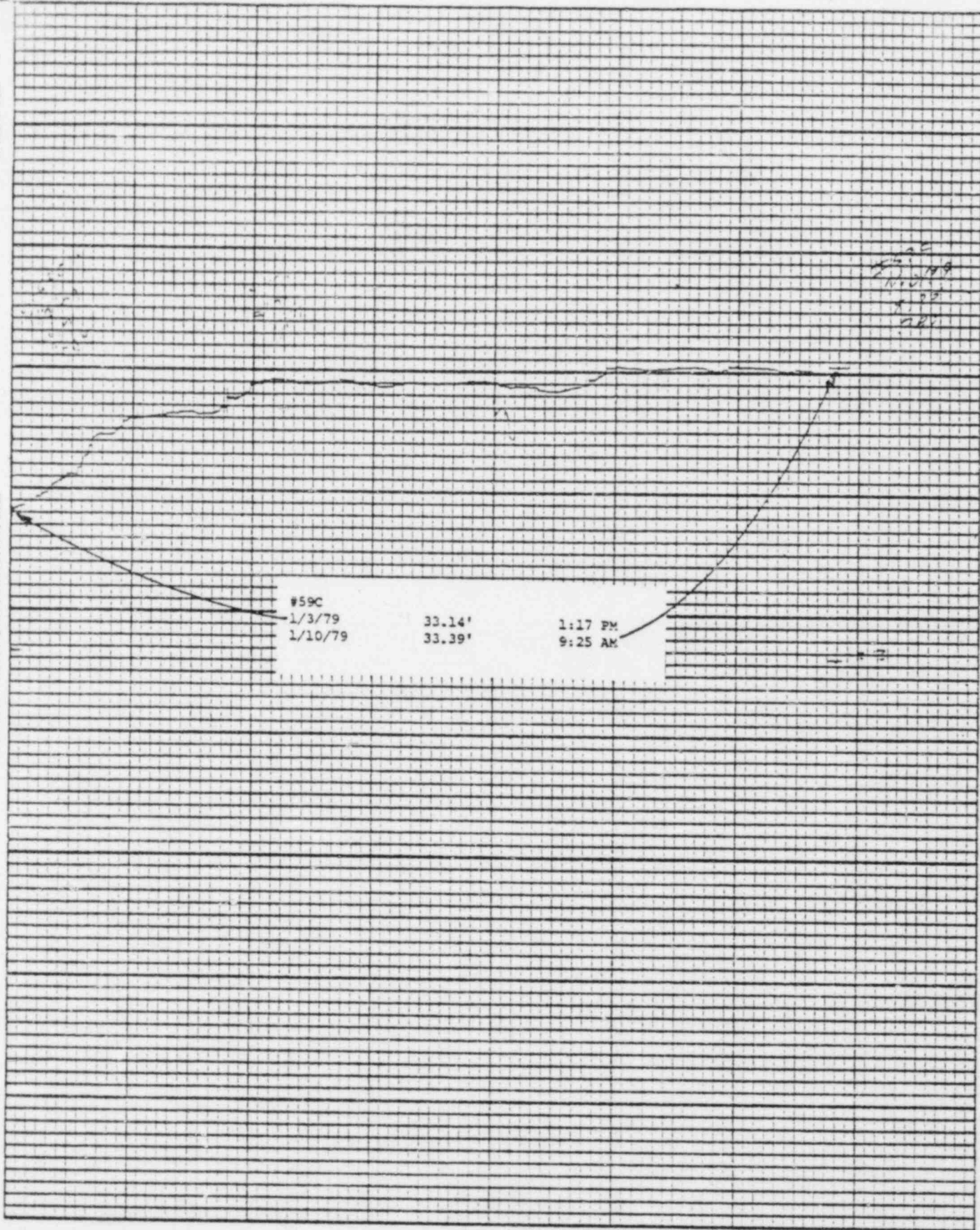
Stevens Water Level Recorder — Type F

5



Leupold & Stevens, Inc., Heaverton, Ore.

Printed in U.S.A.



Stevens Water Level Recorder — Type F

Chart P-1

BAILLY WELLS WITHOUT RECORDERS

1/10/79

<u>WELL #</u>	<u>WATER ELEVATION IN FEET</u>
62	30.87
65	25.90
67	21.10
72	10.85
73	11.02
74	13.64

MD:lr
1/11/79

POND LEVELS

<u>POND</u>	<u>1/10/79</u>
1	FROZEN
2	FROZEN
3	NOT CHECKED
4	NOT CHECKED
5	NOT CHECKED
6	FROZEN
7	NOT CHECKED
8	DRY
9	FROZEN
10	FROZEN
11	FROZEN
12	36.14
13	37.41

MD:lr
1/11/79

PNEUMATIC PRESSURE TRANSDUCERS

1/10/79

<u>TRANSDUCER</u>	<u>WATER ELEVATION IN FEET</u>
P-1	9.1
P-2	7.9
P-3	4.8
P-4	11.0
P-5	13.0
P-6	13.2

MD:lr
1/11/79

WATER METER READINGS

<u>DATE</u>	<u>TIME</u>	<u>METER READING (GALLONS)</u>	<u>INSTANTANEOUS FLOW RATE (GPM)</u>
-------------	-------------	----------------------------------------	------------------------------------------

Sump Pump Discharge

1/9/79	2:59 PM	219447000	261
--------	---------	-----------	-----

Well Point Discharge

NOT IN USE

MD:lr
1/11/79