

OPERATING DATA REPORT

DOCKET NO. 50-302
DATE 1/4/84
COMPLETED BY D. Graham
TELEPHONE (904) 795-3802

OPERATING STATUS

1. Unit Name: Crystal River Unit 3
2. Reporting Period: 12/1/83 - 12/31/83
3. Licensed Thermal Power (MWt): 2544
4. Nameplate Rating (Gross MWe): 890
5. Design Electrical Rating (Net MWe): 825
6. Maximum Dependable Capacity (Gross MWe): 850
7. Maximum Dependable Capacity (Net MWe): 811
8. If Changes Occur in Capacity Ratings (Items Number 3 Through 7) Since Last Report, Give Reasons:
N/A

Notes

9. Power Level To Which Restricted, If Any (Net MWe): N/A
10. Reasons For Restrictions, If Any: N/A

	This Month	Yr.-to-Date	Cumulative
11. Hours In Reporting Period	<u>744</u>	<u>8760</u>	<u>59640</u>
12. Number Of Hours Reactor Was Critical	<u>744</u>	<u>5362</u>	<u>37569.2</u>
13. Reactor Reserve Shutdown Hours	<u>0</u>	<u>0</u>	<u>1280.3</u>
14. Hours Generator On-Line	<u>733.2</u>	<u>5152.1</u>	<u>36619</u>
15. Unit Reserve Shutdown Hours	<u>0</u>	<u>0</u>	<u>0</u>
16. Gross Thermal Energy Generated (MWH)	<u>1768273</u>	<u>11439380</u>	<u>81964335</u>
17. Gross Electrical Energy Generated (MWH)	<u>618683</u>	<u>3960119</u>	<u>27926736</u>
18. Net Electrical Energy Generated (MWH)	<u>590175</u>	<u>3772203</u>	<u>26517083</u>
19. Unit Service Factor	<u>98.5%</u>	<u>58.8%</u>	<u>61.4%</u>
20. Unit Availability Factor	<u>58.5%</u>	<u>58.8%</u>	<u>61.4%</u>
21. Unit Capacity Factor (Using MDC Net)	<u>97.8%</u>	<u>53.1%</u>	<u>56.3%</u>
22. Unit Capacity Factor (Using DER Net)	<u>96.2%</u>	<u>52.2%</u>	<u>53.9%</u>
23. Unit Forced Outage Rate	<u>1.5%</u>	<u>3.6%</u>	<u>23.5%</u>
24. Shutdowns Scheduled Over Next 6 Months (Type, Date, and Duration of Each): <u>None</u>			

25. If Shut Down At End Of Report Period, Estimated Date of Startup: N/A
26. Units In Test Status (Prior to Commercial Operation):

	Forecast	Achieved
INITIAL CRITICALITY	<u> </u>	<u>1/14/77</u>
INITIAL ELECTRICITY	<u> </u>	<u>1/30/77</u>
COMMERCIAL OPERATION	<u> </u>	<u>3/13/77</u>

8401160167 831231
PDR ADOCK 05000302
R PDR

(9/77) *IE24*

AVERAGE DAILY UNIT POWER LEVEL

DOCKET NO. 50-302

UNIT FLCRP-3

DATE 1/4/84

COMPLETED BY D. Graham

TELEPHONE (904) 795-3802

MONTH December 1983

DAY AVERAGE DAILY POWER LEVEL
(MWe-Net)

1	<u>859</u>
2	<u>850</u>
3	<u>845</u>
4	<u>845</u>
5	<u>858</u>
6	<u>858</u>
7	<u>849</u>
8	<u>843</u>
9	<u>862</u>
10	<u>849</u>
11	<u>825</u>
12	<u>605</u>
13	<u>622</u>
14	<u>717</u>
15	<u>856</u>
16	<u>846</u>

DAY AVERAGE DAILY POWER LEVEL
(MWe-Net)

17	<u>859</u>
18	<u>846</u>
19	<u>866</u>
20	<u>826</u>
21	<u>852</u>
22	<u>866</u>
23	<u>825</u>
24	<u>875</u>
25	<u>817</u>
26	<u>777</u>
27	<u>211</u>
28	<u>579</u>
29	<u>758</u>
30	<u>826</u>
31	<u>821</u>

INSTRUCTIONS

On this format, list the average daily unit power level in MWe-Net for each day in the reporting month. Compute to the nearest whole megawatt.

UNIT SHUTDOWNS AND POWER REDUCTIONS

REPORT MONTH 12/83

DOCKET NO. 50-302
 UNIT NAME FLCRP-3
 DATE 1/4/84
 COMPLETED BY D. Fields
 TELEPHONE (904) 795-3802

No.	Date	Type ¹	Duration (Hours)	Reason ²	Method of Shutting Down Reactor ³	Licensee Event Report #	System Code ⁴	Component Code ⁵	Cause & Corrective Action to Prevent Recurrence
83-34	831211	S	37.7	B	N/A	N/A	HC	HTEXCH	Reduced power to clean condenser tubes.
83-35	831226	F	10.8	A	N/A	N/A	HF	HTEXCH	Extreme cold weather caused an influx of fish into the circulating water system which resulted in a failure of the traveling screens. Turbine was taken out of service.
83-36	831226	F	68.3	B	N/A	N/A	HC	HTEXCH	Reduced power to clean condenser tubes following large influx of fish.

¹
 F: Forced
 S: Scheduled

²
 Reason:
 A-Equipment Failure (Explain)
 B-Maintenance or Test
 C-Refueling
 D-Regulatory Restriction
 E-Operator Training & License Examination
 F-Administrative
 G-Operational Error (Explain)
 H-Other (Explain)

³
 Method:
 1-Manual
 2-Manual Scram.
 3-Automatic Scram.
 4-Other (Explain)

⁴
 Exhibit G - Instructions for Preparation of Data Entry Sheets for Licensee Event Report (LER) File (NUREG-0161)

⁵
 Exhibit I - Same Source

(9/77)

MONTHLY OPERATIONAL SUMMARY STATEMENT

DOCKET NO. 50-302

UNIT FLCRP-3

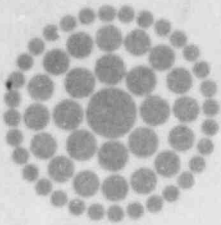
DATE 1/4/84

COMPLETED BY D. Fields

TELEPHONE (904) 795-3802

MONTH December 1983

SUMMARY STATEMENT: The unit operated at or near full capacity for the entire month. Extreme cold weather and a resultant influx of fish forced the turbine off-line for an eleven hour period. There were no scrams or reactor shutdowns for the month.



**Florida
Power**
CORPORATION

January 9, 1984
3F0184-12

Mr. Richard C. DeYoung, Director
Office of Inspection and Enforcement
U.S. Nuclear Regulatory Commission
Attn.: Document Control Desk
Washington, DC 20555

Subject: Crystal River Unit 3
Docket No. 50-302
Operating License No. DPR-72
Monthly Operating Report

Dear Mr. DeYoung:

Attached are twelve (12) copies of the Crystal River Unit 3 December 1983 Monthly Operating Report. This report is submitted in accordance with Technical Specification 6.9.1.6.

Sincerely,

G. R. Westafer
Manager, Nuclear Operations
Licensing and Fuel Management

AEF:jcf

Attachments

cc: Mr. J.P. O'Reilly
Regional Administrator, Region II
Office of Inspection & Enforcement
U.S. Nuclear Regulatory Commission
101 Marietta Street N.W., Suite 2900
Atlanta, GA 30303

IE 24
1/1