

LICENSEE EVENT REPORT

EXHIBIT A

CONTROL BLOCK: 1 (PLEASE PRINT OR TYPE ALL REQUIRED INFORMATION)

01 F 02 L 03 C 04 R 05 P 06 3 07 0 08 0 09 - 10 0 11 0 12 0 13 0 14 0 15 - 16 0 17 0 18 0 19 0 20 0 21 4 22 1 23 1 24 1 25 1 26 1 27 4 28 1 29 1 30 1 31 1 32 1 33 1 34 1 35 1 36 1 37 1 38 1 39 1 40 1 41 1 42 1 43 1 44 1 45 1 46 1 47 1 48 1 49 1 50 1 51 1 52 1 53 1 54 1 55 1 56 1 57 1 58 1 59 1 60 1 61 1 62 1 63 1 64 1 65 1 66 1 67 1 68 1 69 1 70 1 71 1 72 1 73 1 74 1 75 1 76 1 77 1 78 1 79 1 80 1

CON'T

REPORT SOURCE: 01 L 02 0 03 5 04 0 05 - 06 0 07 3 08 0 09 2 10 7 11 1 12 2 13 0 14 8 15 8 16 3 17 0 18 1 19 1 20 0 21 6 22 8 23 4 24 9

EVENT DESCRIPTION AND PROBABLE CONSEQUENCES (10)

01 2 On December 8, 1983, it was determined that the recorder for Reactor Building Pressure (BS-65-PR) was inoperable. This is the first event of this type and the fifteenth report under Technical Specification 3.3.3.6. Reactor Building Pressure indication was available on indicators BS-16-PI and BS-17-PI located on the main control board.

02 7

03 8

04 9

05 1

06 1

07 1

08 1

09 1

10 1

11 1

12 1

13 1

14 1

15 1

16 1

17 1

18 1

19 1

20 1

21 1

22 1

23 1

24 1

25 1

26 1

27 1

28 1

29 1

30 1

31 1

32 1

33 1

34 1

35 1

36 1

37 1

38 1

39 1

40 1

41 1

42 1

43 1

44 1

45 1

46 1

47 1

48 1

49 1

50 1

51 1

52 1

53 1

54 1

55 1

56 1

57 1

58 1

59 1

60 1

61 1

62 1

63 1

64 1

65 1

66 1

67 1

68 1

69 1

70 1

71 1

72 1

73 1

74 1

75 1

76 1

77 1

78 1

79 1

80 1

17 LER/RO REPORT NUMBER: 01 8 02 3

ACTION TAKEN: 01 G 02 G 03 1 04 9 05 1 06 9 07 1 08 9 09 1 10 9 11 1 12 9 13 1 14 9 15 1 16 9 17 1 18 9 19 1 20 9 21 1 22 9 23 1 24 9 25 1 26 9 27 1 28 9 29 1 30 9 31 1 32 9 33 1 34 9 35 1 36 9 37 1 38 9 39 1 40 9 41 1 42 9 43 1 44 9 45 1 46 9 47 1 48 9 49 1 50 9 51 1 52 9 53 1 54 9 55 1 56 9 57 1 58 9 59 1 60 9 61 1 62 9 63 1 64 9 65 1 66 9 67 1 68 9 69 1 70 9 71 1 72 9 73 1 74 9 75 1 76 9 77 1 78 9 79 1 80 9

CAUSE DESCRIPTION AND CORRECTIVE ACTIONS (27)

10 1 This event was caused by a procedural inadequacy. The recorder was disconnected during installation of a modification when one of the electrical drawings used for the modification was revised and one of the wires to the recorder was inadvertently omitted. A modification was prepared to correct the wiring to the recorder and was installed on December 27, 1983. SP-300, Operating Daily Surveillance Log, will be revised to ensure the recorders listed in T.S. 3.3.3.6 are checked each shift.

11 1

12 1

13 1

14 1

15 1

16 1

17 1

18 1

19 1

20 1

21 1

22 1

23 1

24 1

25 1

26 1

27 1

28 1

29 1

30 1

31 1

32 1

33 1

34 1

35 1

36 1

37 1

38 1

39 1

40 1

41 1

42 1

43 1

44 1

45 1

46 1

47 1

48 1

49 1

50 1

51 1

52 1

53 1

54 1

55 1

56 1

57 1

58 1

59 1

60 1

61 1

62 1

63 1

64 1

65 1

66 1

67 1

68 1

69 1

70 1

71 1

72 1

73 1

74 1

75 1

76 1

77 1

78 1

79 1

80 1

15 FACILITY STATUS: 01 E 02 0 03 9 04 9 05 1 06 9 07 1 08 9 09 1 10 9 11 1 12 9 13 1 14 9 15 1 16 9 17 1 18 9 19 1 20 9 21 1 22 9 23 1 24 9 25 1 26 9 27 1 28 9 29 1 30 9 31 1 32 9 33 1 34 9 35 1 36 9 37 1 38 9 39 1 40 9 41 1 42 9 43 1 44 9 45 1 46 9 47 1 48 9 49 1 50 9 51 1 52 9 53 1 54 9 55 1 56 9 57 1 58 9 59 1 60 9 61 1 62 9 63 1 64 9 65 1 66 9 67 1 68 9 69 1 70 9 71 1 72 9 73 1 74 9 75 1 76 9 77 1 78 9 79 1 80 9

ACTIVITY CONTENT: 01 Z 02 0 03 3 04 3 05 1 06 3 07 1 08 3 09 1 10 3 11 1 12 3 13 1 14 3 15 1 16 3 17 1 18 3 19 1 20 3 21 1 22 3 23 1 24 3 25 1 26 3 27 1 28 3 29 1 30 3 31 1 32 3 33 1 34 3 35 1 36 3 37 1 38 3 39 1 40 3 41 1 42 3 43 1 44 3 45 1 46 3 47 1 48 3 49 1 50 3 51 1 52 3 53 1 54 3 55 1 56 3 57 1 58 3 59 1 60 3 61 1 62 3 63 1 64 3 65 1 66 3 67 1 68 3 69 1 70 3 71 1 72 3 73 1 74 3 75 1 76 3 77 1 78 3 79 1 80 3

PERSONNEL EXPOSURES: 01 0 02 0 03 0 04 0 05 1 06 0 07 0 08 0 09 1 10 0 11 0 12 0 13 0 14 1 15 0 16 0 17 0 18 0 19 1 20 0 21 0 22 0 23 0 24 1 25 0 26 0 27 0 28 0 29 1 30 0 31 0 32 0 33 0 34 1 35 0 36 0 37 0 38 0 39 1 40 0 41 0 42 0 43 0 44 1 45 0 46 0 47 0 48 0 49 1 50 0 51 0 52 0 53 0 54 1 55 0 56 0 57 0 58 0 59 1 60 0 61 0 62 0 63 0 64 1 65 0 66 0 67 0 68 0 69 1 70 0 71 0 72 0 73 0 74 1 75 0 76 0 77 0 78 0 79 1 80 0

PERSONNEL INJURIES: 01 0 02 0 03 0 04 0 05 1 06 0 07 0 08 0 09 1 10 0 11 0 12 0 13 0 14 1 15 0 16 0 17 0 18 0 19 1 20 0 21 0 22 0 23 0 24 1 25 0 26 0 27 0 28 0 29 1 30 0 31 0 32 0 33 0 34 1 35 0 36 0 37 0 38 0 39 1 40 0 41 0 42 0 43 0 44 1 45 0 46 0 47 0 48 0 49 1 50 0 51 0 52 0 53 0 54 1 55 0 56 0 57 0 58 0 59 1 60 0 61 0 62 0 63 0 64 1 65 0 66 0 67 0 68 0 69 1 70 0 71 0 72 0 73 0 74 1 75 0 76 0 77 0 78 0 79 1 80 0

LOSS OF OR DAMAGE TO FACILITY: 01 Z 02 0 03 3 04 3 05 1 06 3 07 1 08 3 09 1 10 3 11 1 12 3 13 1 14 3 15 1 16 3 17 1 18 3 19 1 20 3 21 1 22 3 23 1 24 3 25 1 26 3 27 1 28 3 29 1 30 3 31 1 32 3 33 1 34 3 35 1 36 3 37 1 38 3 39 1 40 3 41 1 42 3 43 1 44 3 45 1 46 3 47 1 48 3 49 1 50 3 51 1 52 3 53 1 54 3 55 1 56 3 57 1 58 3 59 1 60 3 61 1 62 3 63 1 64 3 65 1 66 3 67 1 68 3 69 1 70 3 71 1 72 3 73 1 74 3 75 1 76 3 77 1 78 3 79 1 80 3

PUBLICITY: 01 N 02 0 03 3 04 3 05 1 06 3 07 1 08 3 09 1 10 3 11 1 12 3 13 1 14 3 15 1 16 3 17 1 18 3 19 1 20 3 21 1 22 3 23 1 24 3 25 1 26 3 27 1 28 3 29 1 30 3 31 1 32 3 33 1 34 3 35 1 36 3 37 1 38 3 39 1 40 3 41 1 42 3 43 1 44 3 45 1 46 3 47 1 48 3 49 1 50 3 51 1 52 3 53 1 54 3 55 1 56 3 57 1 58 3 59 1 60 3 61 1 62 3 63 1 64 3 65 1 66 3 67 1 68 3 69 1 70 3 71 1 72 3 73 1 74 3 75 1 76 3 77 1 78 3 79 1 80 3

ISSUED DESCRIPTION: 01 N 02 0 03 3 04 3 05 1 06 3 07 1 08 3 09 1 10 3 11 1 12 3 13 1 14 3 15 1 16 3 17 1 18 3 19 1 20 3 21 1 22 3 23 1 24 3 25 1 26 3 27 1 28 3 29 1 30 3 31 1 32 3 33 1 34 3 35 1 36 3 37 1 38 3 39 1 40 3 41 1 42 3 43 1 44 3 45 1 46 3 47 1 48 3 49 1 50 3 51 1 52 3 53 1 54 3 55 1 56 3 57 1 58 3 59 1 60 3 61 1 62 3 63 1 64 3 65 1 66 3 67 1 68 3 69 1 70 3 71 1 72 3 73 1 74 3 75 1 76 3 77 1 78 3 79 1 80 3

NAME OF PREPARER: R. E. Carbiener

PHONE: 904/795-3802 ext. 302

8401130160 840106
PDR ADDCK 05000302
S PDR

IE 22

SUPPLEMENTARY INFORMATION

REPORT NO.: 50-302/83-062/03L-0

FACILITY: Crystal River Unit 3

REPORT DATE: January 6, 1984

DATE OF OCCURRENCE: December 8, 1983

IDENTIFICATION OF OCCURRENCE:

The recorder for Reactor Building pressure (BS-65-PR) was determined inoperable, contrary to Technical Specification 3.3.3.6.

CONDITIONS PRIOR TO OCCURRENCE:

Mode 1 (99% Full Power).

DESCRIPTION OF OCCURRENCE:

On December 8, 1983, it was determined that the recorder for Reactor Building pressure (BS-65-PR) was inoperable.

DESIGNATION OF APPARENT CAUSE:

This event was caused by a procedural inadequacy. The recorder was disconnected during installation of a modification when one of the electrical drawings used for the modification was revised and one of the wires to the recorder was inadvertently omitted.

ANALYSIS OF OCCURRENCE:

Reactor Building pressure indication was available on indicators BS-16-PI and BS-17-PI located on the main control board.

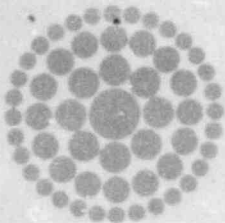
CORRECTIVE ACTION:

A modification was prepared to correct the wiring to BS-65-PR. The recorder was reconnected on December 27, 1983.

SP-300, Operating Daily Surveillance Log, will be revised to ensure the recorders listed in Technical Specification 3.3.3.6 are checked each shift.

FAILURE DATA:

This is the first event of this type and the fifteenth report under Technical Specification 3.3.3.6.



04 JAN 10 A 9:48

**Florida
Power**
CORPORATION

January 6, 1984
3F0184-09

Mr. James P. O'Reilly
Regional Administrator, Region II
Office of Inspection & Enforcement
U.S. Nuclear Regulatory Commission
101 Marietta Street N.W., Suite 2900
Atlanta, GA 30303

Subject: Crystal River Unit 3
Docket No. 50-302
Operating License No. DPR-72
Licensee Event Report No. 83-062

Dear Mr. O'Reilly:

Enclosed is Licensee Event Report No. 83-062 and the attached supplementary information sheet, which are submitted in accordance with Technical Specification 6.9.1.9(b).

Should there be any questions, please contact this office.

Sincerely,

G. R. Westafer
Manager, Nuclear Operations
Licensing and Fuel Management

AEF/feb

Enclosure

cc: Document Control Desk
U.S. Nuclear Regulatory Commission
Washington D.C. 20555

OFFICIAL COPY

IE22

11