

NOV 17 1983

Page 1 of 1
November 1983

ST. LUCIE UNIT 1
ADMINISTRATIVE PROCEDURE INDEX

1

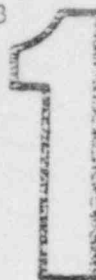
<u>PROCEDURE #</u>	<u>REV.</u>	<u>TITLE</u>
1-0005733	1	Mechanical Start-up Training Program
1-0010123	36	Admin. Control of Valves, Locks and Switches
1-0010125	54	Schedule of Periodic Tests, Checks and Calibrations
1-0010130	4	Administrative Control of Backfit Activities
1-1800023	0	Fire Fighting Strategies

8401060025 831228
PDR ADOCK 05000335
F PDR

NOV 17 1983

Page 1 of 2
November 1983ST. LUCIE UNIT 1
CHEMISTRY PROCEDURES INDEX

<u>PROCEDURE #</u>	<u>REV.</u>	<u>TITLE</u>
1-C-09B	2	Tank Sampling
1-C-26	1	Determination of Sodium Hydroxide WT %
1-C-57	5	Maintaining Refueling Water Tank Limits
1-C-60	4	Maintaining Safety Injection Tank Limits
1-C-62	8	Process Monitoring System Operation
1-C-63	6	Calibration of the Condenser Air Ejection Process Monitor
1-C-64	7	Calibration of the Liquid Waste Discharge Radiation Monitor
1-C-65	6	Calibration of the Gaseous Radwaste Monitor
1-C-66	9	Tech. Spec. Calibration of the Plant Vent, Fuel Building Exhaust, ECCS, and Steam Dump Monitors
1-C-67	7	Calibration of the Containment Process Monitor
1-C-68	5	Calibration of the CCW Radiation Monitors
1-C-69	6	Tech. Spec. Calibration of the S/G Blowdown Monitor Systems
1-C-73a	0	Secondary Chemical Additions System Operation
1-C-75	1	Operation of the Letdown Process Monitor
1-C-78	4	Calibration of the Chemistry Department Portable Air Monitor - NMC
1-C-80	7	Determination of Hydrogen Gas in Containment
1-C-82	4	Periodic Maintenance & Calibration of Control Room Cl. Det.

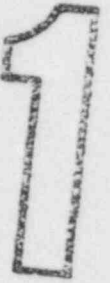


NOV 17 1983

Page 2 of 2
November 1983

ST. LUCIE UNIT 1
CHEMISTRY PROCEDURES INDEX

<u>PROCEDURE #</u>	<u>REV.</u>	<u>TITLE</u>
1-C-110	1	Collecting Initial Set of Post Accident Samples and Guidelines for Establishing Post Accident Water and Gas Inventory Control.
1-C-112	0	Operation & Calibration of the Milton Roy Accident Sampling System



NOV 17 1983

Page 1 of 1
November 1983ST. LUCIE UNIT 1
GENERAL MAINTENANCE PROCEDURE INDEX

1

<u>PROCEDURE #</u>	<u>REV.</u>	<u>TITLE</u>
1-M-0006	9	Inspection of Hydraulic & Mechanical Seismic Restraints
1-M-0007	4	Functional Testing of Hydraulic Seismic Restraints (Snubbers)
1-M-0012	3	CCW Pump Disassembly and Reassembly
1-M-0013	3	High Pressure Safety Injection Pump - Disassembly and Reassembly
1-M-0014	4	Low Pressure Safety Injection Pump - Disassembly and Reassembly
1-M-0015	9	Rx Vessel Maintenance - Sequence of Operations
1-M-0026	1	Reactor CEM Vent Ball Replacement
1-M-0031	1	Intake Cooling Water Pump Disassembly, Repair and Reassembly
1-M-0033	3	Pressurizer Heater Replacement
1-M-0601	5	Radioactive Filter Cartridge Replacement
1-M-0706	2	Reactor Vessel Internals Inspection Procedure
* 1-M-0800	0	Hydrostatic Test Following Repair of Safety Injection Line I-SI-228
* 1-M-0919	2	CZA Guide Tube Sleeving for Fuel Assemblies

*DISTRIBUTED TO MASTER FILE ONLY

NOV 17 1983

Page 1 of 1
November 1983

ST. LUCIE UNIT 1
HEALTH PHYSICS OPERATING PROCEDURES INDEX

<u>PROCEDURE #</u>	<u>REV.</u>	<u>TITLE</u>
1-HP-10D	0	Operation of the TASC-12A6 Alpha/Beta Counting System
1-HP-11	3	Portal Monitor Operation Check
1-HP-13R	0	Operation & Calibration of the Eberline PING 1A
1-HP-39	5	Calibration of the Control Room Outside Air Intake Monitors
1-HP-45	3	Operation & Use of Container Products Corp. Model 100 Compactor
1-HP-104	0	Use of the Nuclear Bartlett Model 300 Freon Decontamination Unit

NOV 17 1983

Page 1 of 3
November 1983ST. LUCIE UNIT 1
I & C DEPARTMENT PROCEDURES INDEX

<u>PROCEDURE #</u>	<u>REV.</u>	<u>TITLE</u>
1-0110051	6	CEA Position Indict. Alarm System Calibration
1-0110061	1	CEIM Coil Stack Shroud Removal & Replacement
1-0120050	3	Reactor Protection System RCS Low Flow Trip Setpoint Determination
1-0540050	2	Periodic Calibration of Steam Header Pressure Monitors on Hot Shutdown Control Panel (HSCP)
1-0540051	2	Periodic Calibration of Reactor Coolant System Pressure Level and Temperature Monitors on Hot Shutdown Control Panel (HSCP)
1-1120070	4	H1 Range Rad. Monitor Calibration
1-1200053	2	Steam Generator Level Instrumentation Surveillance on Hot Shutdown Control Panel
1-1200054	0	Overpressure Mitigation System Setpoint Verification
1-1200061	2	B ¹⁰ Prop. Count Accept. Test
1-1210050	2	Wide Range Nuclear Instrumentation Channels Periodic Test
1-1210052	1	Wide Range NI Proportional Counter High Voltage Determination
1-1220050	10	Linear Power Range Safety Channels Quarterly Test
1-1220051	5	Linear Power Range Control Channel Quarterly Calibration
1-1220052	7	Linear Power Range Safety & Contr. Channel Monthly Cal.
1-1240061	1	Installation & Removal of Movable Incore System
1-1240063	1	Wide Range Detector Disassembly & Reassembly

ST. LUCIE UNIT 1
I & C DEPARTMENT PROCEDURES INDEX

NOV 17 1983

<u>PROCEDURE #</u>	<u>REV.</u>	<u>TITLE</u>
1-1400050	25	Reactor Protection System - Monthly Functional Test
1-1400052	16	Engineered Safeguards Actuation System Channel Functional Test
1-1400053	3	RPS-Response Time Testing
1-1400060	1	Torque Check on Through Bolts for Process Flanges on F.P. D/P Transmitters
1-1400061	1	Static Pressure Alignment for Fisher Porter Electronic D/P Transmitters
1-1400063	3	Sequence of Events Recorder Program Loading
1-1400064	21	Installed Plant Instrumentation Calibration
1-1400152	5	Seismic Instr. Calibrations
1-1400153	10	RPS-ESF Sys. Loop Instr. Cal.
1-1400154	4	Reactor Coolant Leakage Detection System Calibration
1-1400155	8	Channel Cal-TMLP-Refueling
1-1400158	5	Reactor Protection System Local Power Density Refueling Channel Calibration
1-1400159	5	Power Ratio Calculator, Refueling Calibration
1-1400160	8	Channel Cal-Delta T Power Quarterly
1-1400162	5	Protection Systems Transmitter Response Time Test
1-1400162A	3	RPS-KID Time Response Test Data Collection
1-1400163	3	Reactor Protection System Power Ratio Calculator-Periodic Test

NOV 17 1983

Page 3 of 3
November 1983

ST. LUCIE UNIT 1
I & C DEPARTMENT PROCEDURES INDEX

<u>PROCEDURE #</u>	<u>REV.</u>	<u>TITLE</u>
1-1400164	4	RPS Refueling Calib.-Trip Bypass Logic Operability
1-1400166	4	Engineered Safeguards Actuation System - ATI Alignment Check
1-1400167	3	ARMS/CIS Response Time Test
1-1400170	0	PORV & SV Position Indicator Channel Calibration
1-1630060	1	Ref. & Fuel Transf. Machines Dillion Load System
1-2000054	1	Periodic Calibration of Hydrogen Recombiner Temperature Instrumentation
1-3400023	1	Polar Crane Weight Indication Calibration
1-3400025	1	JIB Crane Weight Indication Calibration
*1-3400028	2	E-Field Calibration and Quarterly Functional Test Procedure

* Safeguards

NOV 17 1983

Page 1 of 1
November 1983ST. LUCIE UNIT 1
MAINTENANCE PROCEDURES INDEX

<u>PROCEDURE #</u>	<u>REV.</u>	<u>TITLE</u>
1-0110060	12	Periodic Maintenance of Control Element Assembly Drive Element and Switchgear
1-0110067	2	Repair of Insulation Jacket of CEDM Cables, RSPT Cables and Incore Instrumentation Cables
1-0210160	4	1A Charging Pump Maintenance
1-0210161	3	1B Charging Pump Maintenance
1-0210162	3	1C Charging Pump Maintenance
1-0920061	1	Testing of Class 1E Underground Cables
1-0960060	11	125 V DC System Periodic Maintenance and Tests
1-0960061	5	BOP 125 V DC System Periodic Test and Maintenance
1-0960062	7	Safety Battery 1A Emergency Load Profile Test
1-0960063	6	Safety Battery 1B Emergency Load Profile Test
1-0970060	4	Periodic Maintenance of the Instrument A.C. System
1-0990060	4	Five-Year Calibration Check of Installed Metering Equipment
1-1800054	2	Fire Barrier 18 Month Inspection
1-1800056	1	Surveillance of Diesel Generator Fire Protection System
1-2200062	1	1A Emergency Diesel Electrical Inspection
1-2200063	1	1B Emergency Diesel Electrical Inspection

NOV 17 1983

Page 1 of 4
November 1983ST. LUCIE UNIT 1
OFF-NORMAL/EMERGENCY OPERATING PROCEDURES INDEX

<u>PROCEDURE #</u>	<u>REV.</u>	<u>TITLE</u>
1-0030130	17	Reactor Trip/Turbine Trip
1-0030131	21	Plant Annunciator Summary
1-0030132	0	Anticipated Transient Without Scam
1-0030140	27	Blackout Operation
1-0030141	9	Control Room Inaccessibility
1-0030143	2	Total Loss of AC Power
1-0110030	8	CEA Off-Normal Operation and realignment
1-0120031	8	Excessive Reactor Coolant System Leakage
1-0120032	4	Excessive Reactor Coolant System Activity
1-0120034	13	Reactor Coolant Pump - Off-Normal Operation
1-0120035	8	Pressurizer Pressure & Level - Off Normal Operation
1-0120036	4	Pressurizer Relief/Safety Valve - Off-Normal Operation
1-0120040	13	Natural Circulation/Cooldown
1-0120041	15	Steam Generator Tube Rupture
1-0120042	25	Loss of Coolant Accident
1-0120043	0	Inadequate Core Cooling
1-0210030	9	Charging and Letdown - Off-Normal Operation

NOV 17 1983
ST. LUCIE UNIT 1
OFF-NORMAL/EMERGENCY OPERATING PROCEDURES INDEX

1

<u>PROCEDURE #</u>	<u>REV.</u>	<u>TITLE</u>
1-0250030	3	Emergency Boration
1-0250031	3	Boron Concentration Control Off-Normal
1-0310030	13	Component Cooling Water - Off-Normal Operation
1-0310031	6	C.C.W. - Excessive Activity
1-0330030	3	Turbine Cooling Water System - Off-Normal Operation
1-0350030	2	Fuel Pool Cooling System - Off-Normal Operation
1-0360040	4	Operational Requirements for the Emergency Cooling Water Canal
1-0410030	5	HPSI - Off-Normal Operation
1-0440030	5	SDC/LPSI - Off-Normal Operation
1-0510030	2	Uncontrolled Release of Radioactive Liquids
1-0530030	4	Waste Gas System - Off-Normal Operations
1-0530031	2	Uncontrolled Release of Radioactive Gas
1-0610031	3	Loss of Condenser Vacuum
1-0620030	3	Circulating Water System - High Delta T and High Discharge Temperature
1-0640030	3	ICW System - Off-Normal Operation
1-0700040	13	Loss of Feedwater or Steam Generator Level
1-0810040	16	Main Steam Line Break

NOV 17 1983

ST. LUCIE UNIT 1
OFF-NORMAL/EMERGENCY OPERATING PROCEDURES INDEX

1

<u>PROCEDURE #</u>	<u>REV.</u>	<u>TITLE</u>
1-0910030	4	Start-Up Transformer - Off-Normal Operation
1-0910031	3	Main Transformer Off-Normal Operation
1-0910032	1	Auxiliary Transformer Off-Normal Operation
1-0950030	4	Boric Acid Heat Tracing System Off-Normal Operation
1-0960030	12	D.C. Ground Isolation
1-1010030	5	Loss of Instrument Air
1-1110030	1	Off-Normal Operation of the Letdown Monitor
1-1110031	1	Off-Normal Operation of the Condenser Air Ejector Monitor
1-1110032	1	Off-Normal Operation of the Liquid Waste Process Monitor
1-1110033	0	Off-Normal Operation of the Gaseous Waste Monitor
1-1110034	2	Off-Normal Operation of the P-lant Vent Process Monitor
1-1110035	1	Off-Normal Operation of the Containment Process Monitor
1-1110036	2	Off-Normal Operation of the Component Cooling Water Process Monitors A and B
1-1110037	1	Off-Normal Operation of the Steam Generator Blowdown Process Monitors A and B
1-1110038	2	Off-Normal Operation of the Fuel Building Effluent Monitor
1-1120030	0	Area Radiation Monitoring System (ARMS) Off-Normal Condition Operation
1-1210030	3	Wide Range Nuclear Instrumentation Channel Malfunction

NOV 17 1983

Page 4 of 4
November 1983

ST. LUCIE UNIT 1
OFF-NORMAL/EMERGENCY OPERATING PROCEDURES INDEX

<u>PROCEDURE #</u>	<u>REV.</u>	<u>TITLE</u>
1-1300030	2	Loss of Containment Integrity - Off-Normal Operation
1-1300031	3	Airlocks - Off-Normal Operation
1-1560030	1	Primary Water System - Off-Normal Operation
1-1600030	3	Accidents Involving New or Spent Fuel
1-1900030	3	Auxiliary Building and Control Building Ventilation Off-Normal Operation
1-2000030	2	Loss of One Reactor Cavity Cooling Fans or Reactor Support Fans

NOV 17 1983

Page 1 of 9
November 1983ST. LUCIE UNIT 1
OPERATIONAL PROCEDURES INDEX

1

<u>PROCEDURE #</u>	<u>REV.</u>	<u>TITLE</u>
1-0010133	6	Reactor Engineering Power Ascension Program
1-0030120	16	Prestart Check-Off List
1-0030121	28	Reactor Plant Heatup - Cold to Hot Standby
1-0030122	22	Reactor Startur
1-0030123	8	Reactor Operating Gridelines During Steady State and Scheduled Load Changes
1-0030124	20	Turbine Start-Up Zero to Full Load
1-0030125	11	Turbine Shutdown Full Load to Zero Load
1-0030126	9	Estimated Critical Conditions and Inverse Count Rate Ratio
1-0030127	26	Reactor Plant Cooldown - Hot Standby to Cold Shutdown
1-0030128	5	Reactor Shutdown
1-0030150	19	Secondary Plant Operating Checks & Tests
1-0030151	14	Remote Shutdown Monitoring Instrumentation Periodic Charnel Check and Selector Switch Position Verification
1-0030221	6	Initial Criticality Following Refueling
1-0030222	3	EOL Post Trip Recovery
1-0110020	5	CEIM MG Set Operation
1-0110022	7	Coupling and Uncoupling of CEA Extension Shafts
1-0110050	10	Control Element Assembly Periodic Exercise

NOV 17 1983

Page 2 of 9
November 1983ST. LUCIE UNIT 1
OPERATIONAL PROCEDURES INDEX

<u>PROCEDURE #</u>	<u>REV.</u>	<u>TITLE</u>
1-0110052	6	Zero Power Physics Tests after Reload
1-0110054	29	Periodic Rod Drop Time Test
1-0110055	9	Surveillance Requirements for Shutdown Margin, Modes 1 & 2, Critical
1-0110055A	3	Shutdown Margin Suspension During Zero Power Physics Testing
1-0110056	14	Surveillance Requirements for Shutdown Margin, Modes 2, 3, 4 & 5, subcritical
1-0110057	12	Periodic Surveillance of DNB Margin
1-0110059	5	Suspension of Group Height, Insertion and Power Distribution Limit Requirements
1-0120020	28	Filling and Venting the RCS
1-0120022	6	Leak Test Following RCS Opening
1-0120023	9	Reactor Coolant Pump Normal Operation
1-0120024	0	Pressurizer Steam Space Venting
1-0120025	4	Quench Tank Operation
1-0120027	5	Steam Generator Wet Lay-Up
1-0120051	6	RCS Flow Determination by Calorimetric Procedure
1-0120461	1	S/G Secondary Cold Hydro, <805 PSIG
1-0210020	18	Charging and Letdown-Normal Operation
1-0210021	4	VCT - H ₂ & N ₂ Concentration Control

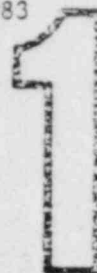
ST. LUCIE UNIT 1 NOV 17 1983
OPERATIONAL PROCEDURES INDEX

Page 3 of 9
November 1983

<u>PROCEDURE #</u>	<u>REV.</u>	<u>TITLE</u>
1-0220020	3	H ₂ System Normal Operation
1-0230020	7	N ₂ System Normal Operation
1-0250020	18	Boron Concentration Control Normal Operation
1-0250021	5	Boric Acid Batching & Transferring
1-0310020	14	CCW - Normal Operation
1-0330020	4	TCW System - Normal Operation
1-0350020	7	Fuel Pool Cooling & Purification System Normal Operation
1-0400050	8	Periodic Integrated Test of the Engineered Safety Features
1-0410020	19	HPSI/LPSI - Normal Operation
1-0410021	20	Safety Injection Tank - Normal Operation
1-0410050	16	HPSI/LPSI Periodic Test
1-0410052	2	Check Valve Back Leakage
1-0410166	3	LPSI/HPSI/SDC System Flush
1-0420020	15	Containment Spray Initial Valve Alignment
1-0420050	17	CS-Periodic Test, Pump & Valve Operability
1-0420052	2	NaOH System - Eductor Flow Test
1-0510020	10	Oxygenated Waste System

ST. LUCIE UNIT 1
OPERATIONAL PROCEDURES INDEX

NOV 17 1983



<u>PROCEDURE #</u>	<u>REV.</u>	<u>TITLE</u>
1-0510021	0	Waste Concentrator - Operation
1-0510022	21	Controlled Liquid Release to the Circulating Water Discharge
1-0520020	10	Radioactive Resin Replacement
1-0520021	7	Solid Waste Baler Operation
1-0520022	2	Drumming Station Operation for Drumming of Conc. Bottoms
1-0530020	5	Waste Gas System Operation
1-0530021	26	Controlled Gaseous Batch Release to Atmosphere
1-0540020	6	Boron Recovery System Lineup
1-0540021	4	Boric Acid Concentrator Operation
1-0610020	1	Operation of the Cathodic Protection System
1-0610029	3	Condenser Air Removal System Operations
1-0620020	8	Circulating Water System Normal Operation
1-0640020	12	ICW System Operation
1-0700020	11	Cond. & Feedwater System Ops. - Normal Operation
1-0700021	8	Heater Drains & Vent System Alignment
1-0700022	10	Aux. Feedwater Normal Ops.
1-0700023	1	Feedwater Heaters-Placing in or Removing From Service

ST. LUCIE UNIT 1 NOV 17 1993
OPERATIONAL PROCEDURES INDEX

<u>PROCEDURE #</u>	<u>REV.</u>	<u>TITLE</u>
1-0700024	3	Condensate Recovery Sys. Ops.
1-0700025	1	Feedwater Recirculation Line Filter Operation
1-0700050	19.14	Aux. Feedwater Periodic Test
1-0810020	5	Main Steam System Initial Valve Alignment
1-0810050	5	Main Steam Isolation Valve Periodic Test
1-0810051	1	Steam Dump & Bypass System Functional Test
1-0820020	3	Auxiliary Steam System - Placing in Service
1-0830020	8	Blowdown System Operation
1-0840020	2	Auxiliary Boiler Operation
1-0910021	2	Backfeed Thru Main Transformers
1-0910051	4	Main Transformer Periodic Test
1-0910052	2	Auxiliary Transformer Periodic Test
1-0950020	4	Boric Acid Heat Tracing System Op.
1-0960020	9	125V DC System Normal Operation
1-0960022	4	BOP 125V DC System Normal Op.
1-0970020	2	Operation of the 120V Inst. AC System (Class 1E)
1-0970021	5	120V Vital AC System Operation (Non Class 1E)

1

NOV 17 1983

Page 6 of 9
November 1983ST. LUCIE UNIT 1
OPERATIONAL PROCEDURES INDEX

<u>PROCEDURE #</u>	<u>REV.</u>	<u>TITLE</u>
1-0970022	0	Operation of the OSPDS Inverters
1-1010020	4	Inst. Air System Operation
1-1010021	6	Containment Inst. Air System Normal Operation
1-1010022	2	Inst. Air System Initial Valve Alignment
1-1010023	0	MSIV Instrument Air Check Valve Leak Test
1-1020020	3	Station Air System Operation
1-1020022	1	Operation and Calibration of MSA-704 Co Monitor
1-1110020	4	Process Monitoring System Operation
1-1110021	0	High Range Noble Gas Effluent Monitor Sys. Operation
1-1120020	2	Area Radiation Monitoring System (ARMS) Operation
1-1120050	7	Area Radiation Monitoring System (ARMS) Periodic Test
1-1120060	4	Area Radiation Monitoring System Cal. of
1-1130021	2	Reactor Internals Vibration Monitoring Sys. Op. Instructions
1-1150020	0	Qualified Safety Parameter Display System Operation
1-1200051	9	Nuclear & DeltaT Power Calibration
1-1210051	7	Wide Range Nuclear Instrumentation Channels Functional Test
1-1300020	3	Containment Building Access Hatches Operation

NOV 17 1983

Page 7 of 9
November 1983ST. LUCIE UNIT 1
OPERATIONAL PROCEDURES INDEX

<u>PROCEDURE #</u>	<u>REV.</u>	<u>TITLE</u>
1-1300050	3 4	Containment Building Integrated Leak Rate Test
1-1300051	5	Local Leak Rate Tests
1-1300053	2	Airlock Automatic Leak Tester Funct. Test
1-1300054	3	RAB Fluid Systems Periodic Leak Test
1-1400020	3	Sequence of Events Recorder Operation
1-1400057	9	Reactor Regulating System Functional Test
1-1400059	10	Reactor Protection System - Periodic Logic Matrix Test
1-1560020	7	Primary Water System
1-1600022	10	Unit No. 1 Refueling Operation
1-1600023	13	Refueling Sequencing Guidelines
1-1600024	11	Filling & Draining the Refueling Canal & Cavity
1-1600025	0	PEB Vent Sys. Periodic Test
1-1610020	9	Receipt & Handling of New Fuel
1-1630021	2	New Fuel Elevator Operation
1-1630022	2 / 0	Spent Fuel Handling Machine Operation
1-1630023	6	Fuel Transfer System Operation
1-1630024	17	Refueling Machine Operation

1

NOV 17 1983

ST. LUCIE UNIT 1
OPERATIONAL PROCEDURES INDEX

Page 8 of 9
November 1983

1

<u>PROCEDURE #</u>	<u>REV.</u>	<u>TITLE</u>
1-1630025	2	CEA Change Fixture Operation
1-1630027	4	Dry-Sipping of Irridated Fuel Assemblies
1-1630028	4	New Fuel Handling Crane Operation
1-1710020	5	Primary Sample System Valve Alignment
1-1720020	2	Gas Analyzer Operation
1-1730020	2	Secondary Sample System Valve Alignment
1-1900020	3	Reactor Aux. and Control Room Vent System Operation
1-1900050	5	Control Room Pressure Periodic Test
1-2000020	2	Containment Cooling System Operation
1-2000021	1	CONTAINMENT RADIOACTIVITY REMOVAL SYSTEM OPERATION
1-2000023	2	Hydrogen Purge System Operation
1-2000024	5	Shield Bldg. Ventilation System Operation
1-2000053	3	H ₂ Recombiner
1-2100020	2	Turbine Seal Oil System Operation
1-2100021	1	Generator Gas System Operation
1-2100022	1	Turbine Oil System Operation
1-2100023	1	Gen. Air Leakage Rate Drop Test
1-2200020	6	Emergency Diesel Generator Standby Lineup

ST. LUCIE UNIT 1
OPERATIONAL PROCEDURES INDEX

NOV 17 1983

Page 9 of 9
November 1983

<u>PROCEDURE #</u>	<u>REV.</u>	<u>TITLE</u>
1-2200050	25 26	Emergency Diesel Periodic Test
1-3200020	14	Primary System Manual Calorimetric
1-3200050	6	Calculation and Adjustment of Fixed Incore Detector Alarm Setpoints
1-3200051	12	At Power Determ. of Mod. -Temp. Coeff. & Power Coeff.
1-3200053	9	Surveillance Requirement for Azimuthal Power (T_q)
1-3200054	7	Surveillance of Total Radial Peaking Factor (F_T^I)
1-3200058	3	Surveillance Requirements for Total Planar Radial Peaking Factor (T_{Fxy})
1-3200059	4	Forced Xenon Oscillation Test

NOV 17 1983

Page 1 of 6
November 1983

UNIT 1 PREOPERATIONAL TEST PROCEDURES INDEX

<u>PROCEDURE #</u>	<u>REV.</u>	<u>TITLE</u>
0010190	4	Power Ascension Sequencing Document (See Back Shelf - Completed 2 Boxes)
0010192	2	Reactor Coolant System, Pump Flow and Coastdown App. 1
0010193	0	Appendix 11 - Turbine Generator Air Flow test
0010195	0	Load Cycle Test
0110081	2	CEM/CEA Measurement - App. 4 (See Back Shelf - Completed 4 Boxes)
0110081-B	0	CEM/CEA 4/4 Lower Gripper Check
0110082	1	CEA Position Indication and Alarm System Calibration and Functional Test
0110083	1	Reactivity Computer Checkout
0110085	3	CEA Group Calibration
0110086	3	Simulated CEA Ejection, Hot Zero Power
0110087	0	Simulated CEA Ejection Test
0110088	2	Static CEA Drop Test 50% Power
0110089	3	Dynamic CEA Insertion Test 50% Power
0110090	1	10% Load Reduction - Turbine Runback
0110092	1	CEM Temperature Measurements
0110096	2	CEA Symmetry Check/Dropped CEA Worth
0110097	0	Zero Power Physics Tests After Reload (See Back Shelf - Completed)

NOV 17 1983

Page 2 of 6
November 1983

UNIT 1 PREOPERATIONAL TEST PROCEDURES INDEX

<u>PROCEDURE</u>	<u>REV.</u>	<u>TITLE</u>
0120081	1	Partial Loss of Flow Test
0120086	0	Reactor Coolant Gas Vent System Preoperational Test
0120122	0	Reactor Coolant System Hydrotesting
0120084	3	Total Loss of Flow/Natural Circulation Test
0360080	1	Emergency Ultimate Heat Sink Functional Test
0420082	0	The Sodium Hydroxide Injection System Preop Test
0700070	0	Condensate Polisher Backwash Treatment System Preoperational Test
0700080A	1	Steam Generator Feedwater Hammer Test
0700080B	2	Steam Generator Feedwater Hammer Test
0700082	0	Heater Vents and Drains Functional Test
0700089	0	Condensate Pump IC Initial Run
0700090	0	Sodium Ion Analyzer-System Functional Test
0830081	0	Rotating Equipment Start-Up and Initial Run
0830082	0	Blowdown Filter Removal Verification
0830083	0	Steam Generator Blowdown Demineralization System Functional Test
0830084	0	Initial Operation of the SGBTF 120/208 V AC Electrical System
0830085	0	Air Blower Preoperational Test

NOV 17 1983

UNIT 1 PREOPERATIONAL TEST PROCEDURES INDEX

Page 3 of 6
November 1983

<u>PROCEDURE #</u>	<u>REV.</u>	<u>TITLE</u>
0830086	0	Steam Generator Open and Closed Blowdown Cooling System Functional Test
0830087	0	Initial Operation of the SGBTF 480V Motor Control Center (MCC) 1B9
0830088	0	Initial Operation of the 125 V DC System for Steam Generator Blowdown Treatment Facility
0830089	0	Spent Resin and Sludge Water Pre-Op
0830090	0	Process Blowdown System Functional Test
0830091	0	Equipment and Detergent Drain System Test
0830093	1	SGBTF Heating Ventilation and Air Conditioning (HVAC)
0830094	0	Blowdown Facility Hot Functional Test
0830095	1	Air Balancing Procedure
0830096	0	BWMS Functional Test
0830097	0	LERMS Functional Test
0830098	0	Fuel Building Effluent Monitor Functional test
0910081	1	20% Power Trip and Auxiliary to Start-Up Transformer Auto Transfer Test
0910085	0	Main Generator Excitation System Initial Operation
1110088	0	Fuel Building Exhaust Monitor Functional Test
* 1110090	0	Component Cooling Water Radiation Monitors A & B Functional Test
1110090	0	High Range Effluent Monitors Functional Test

UNIT 1 PREOPERATIONAL TEST PROCEDURES INDEX

<u>PROCEDURE #</u>	<u>REV.</u>	<u>TITLE</u>	NOV 17 1983
1120081	0	Post LOCA Radiation Monitoring Preoperational Functional Test	
1130080	0	Loose Parts Monitoring System	
1130081	0	Internals Vibration Monitoring System Functional Test	
1200081	0	Incore Instrumentation Measurements - Post Core Hot Functional App. 5	
1210082	2	Neutron Response of Plant Wide Range Nuclear Channels	
1210083	0	Recalibration of Nuclear and Delta T Power for T_{Cold} at 100% Power	
1220080	1	Nuclear Instrumentation Power Range Linear Channels, Initial Alignment and Calibration	
1240080	0	Incore Instrumentation Preoperational Test	
1240083	0	Movable Incore Detector Drive System Preoperational Test	
1-1240086	0	Qualified Safety Parameter Display System Functional Test	
1400081	3	DDPS - RPS - ESF RTGB Instrument Correlation - Post Core App. 6	
1400084	2	Automatic Control System Checkout, Steam Generator Level Control, CEA Refueling System Automatic Turbine Control & Load Swing Test	
1400093	2	Generator Trip with Shutdown Outside Control Room	
1400094	0	Technical Support Center-Data-Acquisition System Preoperation Functional Test	
1-1400096	0	Safety Assessment System Hardware Component Verification	
1610080	1	Preoperational Test Procedure of Tools & Equipment for Fuel Reconstitution	

UNIT 1 PREOPERATIONAL TEST PROCEDURES INDEX

NOV 17 1983

<u>PROCEDURE #</u>	<u>REV.</u>	<u>TITLE</u>
2000092	0	Shield Building Ventilation System (SEVS) Heaters Functional Test
2000093	0	Containment Hydrogen Samplings A & B Functional Test
2100082	1	NESS Acceptance Run
1-2100085	0	Preoperational Test of the Turbine Oil Centrifuge
2100087	0	Turbine Overspeed Trip Test
2100089	2	Generator Trip
2100090	2	Turbine Trip Test
2100091	4	Loss of Off-Site Power
* 2200080A	1	Automatic Starting & Sequencing of 1A Diesel Generators
3200080	0	Power Range and Control Subchannel Calibration
3200081	3	Nuclear Design Check Test (See Back Shelf for Completed)
3200083	1	Minimum Shutdown Margin Verification
3200084	1	Measurement of Power Defect and Xenon Worth After Shutdown
3200086	2	Initial Criticality
3200087	0	Forced Xenon Oscillation Test
3300081	1	Radiation Shielding Evaluation
3400081	0	Chemical and Radio Chemical Analysis 20, 50, 80, 100% Power.

UNIT 1 PREOPERATIONAL TEST PROCEDURES INDEX

NOV 17 1983

<u>PROCEDURE #</u>	<u>REV.</u>	<u>TITLE</u>
* 3400088	0	Security System FPS Preoperational and Functional Test
* 3400089	0	Security System Microwave Preoperational and Functional Test
* 3400090	0	Security System Fixed CCTV Preoperational and Functional Test
* 3400091	0	Security System E-Field Preoperational and Functional Test
* 2200080A		Distributed to Master Only
* 1110090		Distributed to Master Only
* 3400088		Safeguard
* 3400089		Safeguard
* 3400090		Safeguard
* 3400091		Security System E-Field Preoperational and Functional Test

NOV 17 1983

ST. LUCIE PLANT
ADMINISTRATIVE PROCEDURE INDEX

Applicable to both Units 1 and 2

<u>PROCEDURE #</u>	<u>REV.</u>	<u>TITLE</u>
0004021	6	Preliminary and Conditional Acceptance of Systems by FPL Nuclear Energy Dept.
0005720	10	Licensed Operator Requalification Program
0005721	4	Hot License Operator Training Program
0005722	4	Shift Technical Advisor and Technical Staff Training Program
0005723	6	Shift Technical Advisor and Technical Staff Requalification Program
0005724	2	Operating Experience Feedback
0005725	3	Duties and Responsibilities of the S.T.A.
0005727	2	O.C. Department Training Program
0005728	2	R. E. Department Training Program
0005729	2	Fire Protection Training, Qualification & Requal.
0005730	2	I & C Department Training Program
0005731	3	Electrical Maintenance Training Program
0005732	1	Outage Management Training Program
0005734	1	Emergency First Aid and Personnel Decontamination Team Training, Qualification and Requalification.
0005735	1	PSL Training Dept. Training Program

NOV 17 1983

Page 2 of 3
November 1983ST. LUCIE PLANT
ADMINISTRATIVE PROCEDURE INDEX

<u>PROCEDURE #</u>	<u>REV.</u>	<u>TITLE</u>
0005736	2	Emergency Radiation Team Training, Qualification & Requalification
0005737	1	Health Physics Department Training Program
0005738	2	Security Department Training Procedure
0005739	0	Administrative Department Training Procedure
0005740	1	Non-Licensed Operator Training Qualification and Requalification
0010119	5	Overtime Limitations for Licensed Operators
0010120	21	Duties and Responsibilities of Operators on Shift
0010121	1	Recall of Off-Duty Personnel
0010124	10	Control and Use of Jumpers and Disconnected Leads in Safety Related Systems
0010127	9	Reactor Engineering Schedule of Periodic Tests and Reports
0010128	2	Plant Work Performed by Outside Groups
0010132	4	ASME Code Testing of Pumps and Valves
0010134	1	Component Cycles and Transients
0010135	1	Caution Tag Clearance Procedure
0010136	3	Blue Tag Clearance Procedure
0010137	1	Guidelines for Control Room Labeling

NOV 17 1983

Page 3 of 3
November 1983ST. LUCIE PLANT
ADMINISTRATIVE PROCEDURE INDEX

<u>PROCEDURE #</u>	<u>REV.</u>	<u>TITLE</u>
0010138	1	Plant Maintenance Support Equipment Clearance
0010139	0	Fire Protection Schedule of Periodic Tests and Reports
0010430	7	Maintenance on Nuclear Safety Related or Seismic Class I - Systems
0010431	4	Preventive Maint. Program
0010432	23	Plant Work Orders
0010433	13	Special Nuclear Material Control Records and Reports
0010434	14	Maintenance Dept. Safety Guidelines
0010435	2	Mech. Maint. Department Training Program
0010437	13	Schedule of Mechanical Maintenance Surveillance Requirements
0010438	3	Control of Heavy Load Lifts
0010439	0	Physical Inventory of Spent and New Fuel Storage Areas - Non-Refueling
0010520	11	Facility Review Group
0010721	5	NRC Required Non-Routine Reports
0520025	1	Process Control Program
1800022	5	Fire Protection Program
3300120	4	St. Lucie Plant ALARA Program

NOV 17 1983

Page 1 of 4
November 1983ST. LUCIE PLANT
CHEMISTRY PROCEDURES INDEX

Applicable to both Units 1 and 2

<u>PROCEDURE #</u>	<u>REV.</u>	<u>TITLE</u>
C-01	2/0	Schedule for Periodic Test
C-02	7	Schedule for Test Calibrations
C-04	2	Filing & Record Storage
C-05	6	Diesel Fuel Oil Inventory, Receiving Shipments and Periodic Sampling
C-06	3	Control of Radioactive Calibration Sources
C-07	6	Compositing Samples for Weekly, Monthly & Quarterly Composites Liquids
C-08	5	Reporting Chemistry Data to Operations
C-09a	3	Primary and Secondary Grab Sample
C-10	5	Determination of PH (Meter)
C-11	3	Determination of Conductivity
C-12	6	Determination of Chlorides - Mercuric Nitrate Method (.05 - 10 ppm)
C-13	5	Determination of Fluorides
C-14	3	Determination of Suspended Solids
C-16a	7	Determination of Hydrazine - (Range 0-80 ppB)
C-16b	6	Determination of Hydrazine (Range 0-0.5 ppm)
C-17	8	Determination of Ammonia
C-18	4	Determination of Total Hardness

NOV 17 1983

Page 2 of 4
November 1983ST. LUCIE PLANT
CHEMISTRY PROCEDURES INDEX

<u>PROCEDURE #</u>	<u>REV.</u>	<u>TITLE</u>
C-18b	4	Determination of Total Hardness (.2-20 ppm)
C-19	3	Determination of Dissolved Oxygen - (Chemeric)
C-21	6	Determination Of Dissolved Silica (.01-2 ppm)
C-22	4	Determination of Chromates (Colorimetric)
C-23	4	Determination of Turbidity (HACH Method)
C-25	2	Operation of Mettler Balance
C-27	2	Brine & Acid Cleaning Procedure at WTP
C-31	5	Operation of the IL-251 and IL-257 Atomic Absorption Units
C-35	4	Determination of Boron (NaOH normalities 1.0 & .2)
C-37	5	Determination of Gases (N ₂ , O ₂ , H ₂)
C-38	2	Calibration of Flow Measuring Devices
C-42	5	Chemical Separation of Strontium, Yttrium, Iron and Barium
C-44	4	Determination of Gross B2 & Tritium w/LS7500 Liquid Scintillation Counter
C-46	6	Determination of Gross Alpha Radioactivity
C-47	3	Determination of the Average Beta & Gamma Energy (E) of the Reactor Coolant
C-48a	3	Operation of ND6685 Computer Based Counting System
C-49	4	Maintaining Auxiliary Boiler Chemistry

NOV 17 1983

Page 3 of 4
November 1983ST. LUCIE PLANT
CHEMISTRY PROCEDURES INDEX

<u>PROCEDURE #</u>	<u>REV.</u>	<u>TITLE</u>
C-50	5	Maintaining Steam Generator Chemistry
C-51	7	Maintaining Condensate & Feed System Chemistry
C-52	6	Maintaining Turbine Cooling Water Chemistry and SG B&CW Chemistry
C-53	3	Maintaining Diesel Cooling Water Chemistry (Inhibitor)
C-54	2	Maintaining Water Treatment Plant Chemistry
C-55	8	Maintaining Reactor Coolant System Chemistry
C-56	5	Maintaining Component Cooling Water Chemistry
C-58	5	Maintaining Primary Water Storage Tank Limits
C-59	4	Maintaining Boric Acid Make-Up Tank Limits
C-61	3	Maintaining Fuel Pool Chemistry
C-70	14	Processing Aerated Liquid Wastes
C-71	5	Processing Boric Acid
C-72	19	Processing Gaseous Wastes
C-74	3	Particulate & Iodine Filter Testing
C-77	3	Correlation of Process Monitor Readings to Specific Activity

ST. LUCIE PLANT
CHEMISTRY PROCEDURES INDEX

NOV 17 1983

<u>PROCEDURE #</u>	<u>REV.</u>	<u>TITLE</u>
C-81a	3	High Activity in Rx. Coolant System
C-81b	5	High Activity in Component Cooling Water
C-81c	5	High Activity in a Steam Generator
C-83	4	Condenser Tube Leak
C-84	6	Monitoring Boron Concentration During Refueling
C-90a	1	Calibration of SGBTF Radiat ⁿ Monitor System Liquid
C-90b	1	Calibration of SGBTF Radiation Monitoring Systems - Ventilation
C-91	5	Training of Chemistry Department Personnel
C-111	1	Establishing Remote Analysis Laboratory Counting Laboratory and Counting Procedures for Accident Samples
C-115	0	Kinematic Viscosity Test, Diesel #2 Fuel Oil
C-116	0	Water and Sediment Test, Diesel #2 Fuel Oil
C-117	0	Specific Gravity (API) Diesel #2 Fuel Oil
C-200	3	Offsite Dose Calculation Manual (ODCM)

NOV 17 1983

Page 1 of 1
November 1983ST. LUCIE PLANT
EMERGENCY PLAN IMPLEMENTING PROCEDURE INDEX

Applicable to both Units 1 and 2

<u>PROCEDURE #</u>	<u>REV.</u>	<u>TITLE</u>
3100021E	14	Duties & Responsibilities of Emergency Coordinator
3100022E	14	Classification of Emergencies
3100023E	24	On-Site Emergency Organization and Roster
3100024E	11	Natural Emergencies
3100025E	8	Fire Emergencies
3100026E	9	Criteria For and Conduct of Evacuations
3100027E	6	Re-Entry
3100029E	6	Duties of an Individual Who Discovers an Emergency
3100032E	5	Onsite Support Centers
3100033E	7	Off Site Dose Calculations
3100034E	4	Maintaining Emergency Preparedness-Radiological E-Plan Training
3100035E	2	Off-Site Radiological Monitoring & Dose Assessment
3100050E	6	Maintaining Emergency Preparedness - Emergency Exercises, Drills, Test, and Evaluations
_____	_____	_____
_____	_____	_____
_____	_____	_____

NOV 17 1983

Page 1 of 2
November 1983ST. LUCIE PLANT
ENVIRONMENTAL TEST PROCEDURES INDEX

<u>PROCEDURE #</u>	<u>REV.</u>	<u>TITLE</u>
EV-01	3	Schedule for Periodic Testing
1-EV-02	1	Sampling Methods
1-EV-03	0	Environmental Monitoring Calibrations
EV-11	3	Determination of Ph (Meter)
EV-12	2	Determination of Conductivity
1-EV-14A	2	Determination of Amperometric Free Available and Total Residual Chlorine
EV-14B	0	Determination of Amperometric Free Available and Total Residual Chlorine
EV-15	2	Determination of Turbidity (Hellige Method)
1-EV-16a	2	Determination of Dissolved Oxygen (Meter)
1-EV-16b	2	Dissolved Oxygen (Winkler)
EV-17	0	Determination of Total Copper and Total Iron Using Atomic Absorption Unit (Direct Aspiration)
1-EV-18	1	Determination of Total Suspended Solids
EV-19	1	Determination of Oil & Grease
1-EV-21	1	Determination of Circulating Water Flow
1-EV-22	1	Operation of Mettler Balance
1-EV-23	0	Biochemical O ₂ Demand
1-EV-24	0	Chemical O ₂ Demand

NOV 17 1983

Page 2 of 2
November 1983ST. LUCIE PLANT
ENVIRONMENTAL TEST PROCEDURES INDEX

<u>PROCEDURE #</u>	<u>REV.</u>	<u>TITLE</u>
1-EV-25	0	N ₂ Kjeldahl (Total)
1-EV-25a	0	Total N ₂ (Cadmium Reduction)
1-EV-26	0	Fecal Coliform Membrane Filter Test
1-EV-27	0	Sample Collection
1-EV-28	0	Settleable Solids (Aeration Compartment)
1-EV-29	0	Total Phosphate Procedure (Persulfate-Ascorbic Acid)
1-EV-30	0	Fish Kill Procedure

NOV 17 1983

Page 1 of 2
November 1983ST. LUCIE PLANT
GENERAL MAINTENANCE PROCEDURE INDEX

Applicable to both Units 1 and 2

<u>PROCEDURE #</u>	<u>REV.</u>	<u>TITLE</u>
M-0003	4	Lubrication
M-0004	6	Torque Wrench Tester Operation
M-0005	3	Freeze Seal Application
M-0008	7	Reactor Coolant Pump Seal Removal
M-0009	7	RCP Seal Installation
M-0010	5	Reactor Coolant Pump Seal Cartridge Assembly Flow Test
M-0011	5	RCP Seal Rebuilding
M-0016	4	Mechanical Scrubber Thermal Exp.
M-0017	10	Pressurizer Safety Valve Maintenance
M-0018	9	Mechanical Maintenance Safety Related Preventive Maintenance Program
M-0020	1	Lifting of the Spent Fuel Pool Gate
M-0021	2	Lifting PZR Missile Shield
M-0022	1	Handling Spent Fuel Casks
M-0023	2	Lifting of the ISI Tool
M-0027	2	Welding Job Control List
M-0028	1	Welding Electrodes & Filler Metal Control (Procedure FORMERLY WP-FMC)
M-0029	5	Steam Generator Maintenance

NOV 17 1983

Page 2 of 4
November 1983

ST. LUCIE PLANT
GENERAL MAINTENANCE PROCEDURE INDEX

<u>PROCEDURE #</u>	<u>REV.</u>	<u>TITLE</u>
M-0030	0	Goulds Pumps, Removal, Repair and Replacement
M-0034	3	Pressurizer Manway Removal and Replacement
M-0039	0	Threaded Fasteners of Closure Connections on Reactor Cooling Pressure Boundaries
M-0042	0	Use of MSTE on Nuclear Safety Related Equipment by Mechanical Maintenance
M-0311	3	Equipment Access Hatch Removal and Replacement
M-0400	6	Welding Manual
M-0705	4	Main Steam Safety Valve Maintenance

ST. LUCIE PLANT NOV 17 1983
HEALTH PHYSICS OPERATING PROCEDURES INDEX

Applicable to both Units 1 and 2

<u>PROCEDURE #</u>	<u>REV.</u>	<u>TITLE</u>
HP-1	18	Radiation Work Permits (Also 3300022)
HP-4	16	Scheduling of Health Physics Activities
HP-6	6	Step-Off Pads
HP-10A	1	Use and Maintenance of the Eberline MS-3 Mini Scaler
HP-10C	7	Calibration and Operation of the ND-100 Multi-Channel Analyzer
HP-11A	0	Set-up, Adjustment and Calibration of National Nuclear Corporation Gamma-10 Portal Monitor
HP-13A	6	Operation of Portable Survey Instruments
HP-13B	4	RM-14, RM-17 and Ludlum 177 Operation Check
HP-13C	6	Calibration of Portable Radiation Survey Instruments
HP-13D	5	Calibration of Eberline PR-4 Portable Neutron REM Counter
HP-13E	2	Use & Maintenance of the Eberline AC-3 Scintillation Alpha Detector
HP-13F	1	Calibration & Operation of the Eberline Model AMS-2 and AMS-3 Monitoring Operation
HP-13G	3	Calibration & Response Check of the RM-16
HP-13K	3	Calibration of the Eberline E-520 and Ludlum Model 5 Geiger Counter
HP-13L	2	Calibration & Operation of Eberline RC-2 & RC-2A Portable Ion Chambers
HP-13M	2	Calibration Check of the Containment High Range Radiation Monitors

NOV 17 1983

Page 2 of 4
November 1983ST. LUCIE PLANT
HEALTH PHYSICS OPERATING PROCEDURES INDEX

<u>PROCEDURE #</u>	<u>REV.</u>	<u>TITLE</u>
HP-13N	1-	Calibration & Operation of the Eberline RASCAL (PRS-1 and PRS-2)
HP-13P	1	Calibration of Eberline PPM-6 Pulse Rate Meter
HP-13T	0	Calibration and Operation of the Ludlum Model 2220 Portable Scaler Ratemeter Using a 2" X 2" NaI Scintillation Detector
HP-14A	2	Use of the Eberline MF-1 Mini Pulser
HP-14B	2	Recertification of Calibrated Rod & Disc Radiation Sources
HP-14C	2	Use & Recertification of J.L. Shephard & Assoc. Mark IV Mod. A Series E TLD Irradiator
HP-14D	2	Recertification of Eberline Multiple Source Calibration Model 1000 (MSGC-1000 and MSGC-1000B)
HP-14E	3	Use of the Eberline Multiple Source Gamma Calibrator-Model 1000 (MSGC-1000) and Model MSGC-1000B
HP-14F	6	Calibration of Portable Air Samplers
HP-14G	1	Recertification of the J. L. Shepherd Model 423 Dosimeter Calibrator (JLS 423 DC)
HP-20	6	Radiation & Contamination Surveys
HP-22	9	Air Sampling
HP-30	11	Personnel Monitoring (Also 3300024)
HP-31	5	Calibration and Operation of the En-Vivo Bioassay System
HP-32	6	Source and Drift Check Pocket Dosimetry
HP-33	6	Pocket Dosimeters

ST. LUCIE PLANT NOV 17 1983
HEALTH PHYSICS OPERATING PROCEDURES INDEX

<u>PROCEDURE #</u>	<u>REV.</u>	<u>TITLE</u>
HP-34	4	Estimated Beta Skin Dose From Noble Gases
HP-35	3	Bioassay Program
HP-36	1	MPC-HR Estimation from In vivo Bioassay Data
HP-40	24	Shipment and Receipt of Radioactive Material
HP-41	4	Movement of Material & Equipment
HP-42	3	Storage of Radioactive Waste
HP-43	3	Leak Testing & Inventory of Radioactive Sealed Sources
HP-44	5	Calibration of the NMC Portable Air Monitor NMC Model AM 331F.
HP-46	1	Calibration and Use of the Daboco/Nonnox Air Purifiers Models PBS-601MS and PBS-803MS
HP-50	4	Protective Clothing Requirements (See also OP 3300023)
HP-55	4	Portable Shielding (Also 3300027)
HP-56	0	Instructions for Radiography
HP-60	8	Respiratory Protection Manual (Also 3300021)
HP-61	3	Selection & Use of Respiratory Protection Equipment
HP-62	5	Inspection, Maintenance & O.A. of Respiratory Protection Equipment
HP-63	2	Maximum Permissible Concentration Hour Accountability
HP-65	2	Cleaning, Disinfection, Decontamination, Inspection & Storage of Respiratory Protection Equipment

NOV 7 1983

Page 4 of 4
November 1983ST. LUCIE PLANT
HEALTH PHYSICS OPERATING PROCEDURES INDEX

<u>PROCEDURE #</u>	<u>REV.</u>	<u>TITLE</u>
HP-66	4	Respirator Fitting
HP-67	3	Respiratory Protection Training
HP-70	4	Personnel Decontamination Procedure (See Also OP-3300026)
HP-71	4	Decontamination of Tools, Equipment and Areas
HP-72	1	Determination of Dose to Skin From Fixed Skin Contamination
HP-90	10	Emergency Equipment
HP-101	2	Identification and Reporting of Radiation Incidents
HP-102	1	Calibration & Operation of Ludlum Dual Channel Analyzer Model 2218
HP-103	2	Operation of the Electro-Sonic Decontamination System
HP-200	1	H.P. Emergency Organization
HP-201	0	Emergency Personnel Exposure Control
HP-202	6	Off Site Environmental Monitoring during Emergencies
HP-203	2	Personnel Access Control During Emergencies
HP-204	1	In-Plant Radiation & Contamination Surveys During Emergencies
HP-205	1	Emergency In-Plant Air Sampling
HP-206	1	Analysis of Emergency Air Samples
HP-207	1	Monitoring Evacuated Personnel During Emergencies
HP-208	1	Emergency Personnel Decontamination During Emergencies

NOV 17 1983

Page 1 of 2
November 1983ST. LUCIE PLANT
I & C DEPARTMENT PROCEDURES INDEX

Applicable to both Units 1 and 2

<u>PROCEDURE #</u>	<u>REV.</u>	<u>TITLE</u>
0110067	0	Repair of Insulation Jacket of CEIM and RSPT Cables
1200052	3	Incore Instrumentation Channel Calibration
1200060	3	Fission Chamber Accept. Test
1200062	3	Uncomp. Ion Chamb. Accept. Test
1240060	6	Installation, Removal and Testing of Fixed Incore Detectors
1240062	2	Movable Incore Fission Chamber Accept. Test
1240064	2	Excore Neutron Detectors Removal and Replacement
1400055	8	Env. Data Acquisition Semi-Annual Cal.
1400062	3	RRS System Calibration Procedure
1400063	6	Maint. and Calibration of Plant Inst. & Control Equip.
1400067	20	Calibration of I & C Dept. M & TE
1400151	6	Seismic Instr. Functional Check
1400156	8	Channel Cal-Variable High Power-Quarterly
1400165	6	Reactivity Computer Funct. Test
1400168	1	RPS Core Protection Calculator Power Supply Check
1400169	1	PORV & Safety Valve Position Indicator Channel Check
1800051	8	Semi-Annual Testing of the Fire Detectors

NOV 17 1983

Page 2 of 2
November 1983

ST. LUCIE PLANT
I & C DEPARTMENT PROCEDURES INDEX

<u>PROCEDURE #</u>	<u>REV.</u>	<u>TITLE</u>
1800055	0	Smoke Detector Cleaning and Inspection
* 3400020	5	Security System FPS Quarterly Functional Test (Safeguard Material)
* 3400021	6	Quarterly Testing of Alarmed Doors and Gates (Safeguard Material)
3400024	0	Weekly Maintenance of Security Entrance Scan
* 3400026	0	Security System Fixed CCTV Semi-Annual Functional Test
* 3400027	2	Security System Microwave Quarterly Functional Test

* Safeguards

LETTER OF INSTRUCTION PROCEDURE INDEX
For Unit 1, Unit 2 and Plant Procedures

<u>PROCEDURE #</u>	<u>REV.</u>	<u>TITLE</u>
CHEMISTRY DEPARTMENT		
2-CC-01	0	Flushing and Hydrostatic Test Water for Stainless Steel Reactor and Auxiliary Systems
2-CC-02	0	Chemistry During Systems Flushing, Hydrostatic Testing and Wet Layup
2-CC-03	0	Systems Layup During Construction Phase
2-CC-04	1	Determination of Minimum Recirculation Times for Representative Sampling
2-CC-05	0	Initiation/Maintenance of Layup in Feed, Condensate, and Heater Drain System During Pre-Startup Phase
2-CC-06	0	Initiation/Maintenance of Water Chemistry in Steam Generators During Hydrostatic Testing and Subsequent Layup
2-CC-07	0	Chemistry Control of Stainless Steel Rx Auxiliary System During Fill, Flush, and Layup Prior to Normal Operation
2-CC-08	0	Initiation/Maintenance of Chemistry Control During RCS Hydrostatic Testing
CC-10	0	CST Venting to Atmosphere

NOV 17 1983

LETTER OF INSTRUCTION PROCEDURE INDEX

<u>PROCEDURE #</u>	<u>REV.</u>	<u>TITLE</u>
ELECTRICAL DEPARTMENT		
E-1	0	Identification of Plant Electrical Equipment by Breaker Number
E-2	0	Use of General Electrical Installation Notes
E-3	0	Installation and Repair of Electric Heat Tracing
E-4	0	Use of Cable Termination and Splicing
BACKFIT ELECTRICAL STARTUP DEPARTMENT		
BF/ESU-1	0	Electrical Test Equipment Calibration Procedure for Backfit Testing Operations
ESU DEPARTMENT		
ESU-2	0	Electrical Startup Test Phase Documentation
ESU-11	0	Departmental Training - Electrical Startup
I & C DEPARTMENT		
C-4	1	Instructions for Completion of "Instrument Record" Form #2220
ICSU DEPARTMENT		
ICSU-1	2	Training Program for the Startup Department I & C Section

LETTER OF INSTRUCTION PROCEDURE INDEX

<u>PROCEDURE #</u>	<u>REV.</u>	<u>TITLE</u>
		NOV 17 1983
HP DEPARTMENT		
2-HP-3	0	Radiological Controls Associated with Receipt and Storage of New Reactor Fuel for Unit 2
HP-4	0	Use of LNSI 3-55 Liner Shield for Thermal Shield Transfer

KNH

KNH-2 CANCELLED	0	Unit #1 Access Control
--------------------	---	------------------------

OPERATIONS DEPARTMENT

O-1	2	Caution Tags
O-2	4	Blue Tag Clearance Procedure
O-3	27	Personnel Authorized to Hold Clearances
O-4	0	Request for Plant Clearances from Systems Operations
O-6	2	Jurisdiction of Systems During Startup
O-8	0	Electrical Firefighting Policy for St. Lucie Plant
O-10	0	Preparation for Shipment of Clean New Fuel Bundles
O-11	1	Tavg Coastdown at End of Life
O-12	0	Guidelines for Unit Shutdown and Cooldown

LETTER OF INSTRUCTION PROCEDURE INDEX

<u>PROCEDURE #</u>	<u>REV.</u>	<u>TITLE</u>
--------------------	-------------	--------------

NOV 17 1983

MSU DEPARTMENT

MSU-1	0	Mechanical Startup Training Program
2-MSU-2	0	Mechanical Startup Measuring and Test Equipment
MSU-4	0	Piping Vibration Visual Training

STARTUP DEPARTMENT

SU/PS-1	0	Startup Planning and Scheduling Training Program
SU-10	0	Startup Backfit Program
2-SU-12	1	Preoperational Test Review Group
SU-14	1	DOC Management for Startup Department
SU-15	0	Utilization of Reactor Operating and Testing Experience in the Development of Startup Test Procedures
SU-16	0	Startup Engineer Duties and Responsibilities
SU-17	0	Administrative Guidelines
SU-18	1	Documenting Deficiencies and Corrective Action During Startup

TECH STAFF

T-14	0	Activation of the Technical Support Center (TSC) During Construction Period
T15	0	Moisture Separator/Reheater 2C Performance Test

ST. LUCIE PLANT
MAINTENANCE PROCEDURES INDEX NOV 17 1983

Applicable to both Units 1 and 2

<u>PROCEDURE #</u>	<u>REV.</u>	<u>TITLE</u>
0610069	0	Procedure for Taking Reference Cell Readings for Cathodic Protection
0920062	0	Grounding or Testing of High Voltage (4.16 or 6.9KV) Motors
0920063	0	Safety Requirement for Grounding of High Voltage (4.16 or 6.9KV) Switchgear Busses for Maintenance
0920064	1	Cable and Bus Hi-Pot Instructions
0940061	0	Maintenance of Low Voltage Breakers and Overload Devices
0940062	1	The Preventive Maintenance & Overhaul of Motors
0940063	0	Motor Operated Valve Setup Procedure
0950060	3	Boric Acid Heat Tracing System Periodic Test
0950061	0	Installation of Service Air Flexible Conduit
0959060	3	General Repair Requirements for Electric Motors and Generators
0959063	3	Deluge System Periodic Testing
2000051	1	Shield Building Ventilation System (SBVS) 18 Month Heater Performance Test
2000056	0	18 Month Maintenance and Electrical Department Testing of Hydrogen Recombiners
2100064	0	Generator Grounding and Testing
3400022	0	Polar Crane Inspection

NOV 17 1983

Page 1 of 1
November 1983

ST. LUCIE PLANT
OFF-NORMAL/EMERGENCY OPERATING PROCEDURES INDEX

Applicable to Units 1 and 2

<u>PROCEDURE #</u>	<u>REV.</u>	<u>TITLE</u>
0120038	1	Out of Limit Steam Generator Chemistry Parameters
0610030	6	Condenser Tube Leak
1220030	4	Linear Power Range Channel Malfunction
2100030	1	Oil Spill Emergencies
3000030	0	Severe Weather Preparations

NOV • 7 1983

Page 1 of 1
November 1983

OFF-SITE EMERGENCY ORGANIZATION PROCEDURES INDEX

<u>PROCEDURE #</u>	<u>REV.</u>	<u>DATED</u>	<u>TITLE</u>
1101	1	12/30/82	Duties of the Emergency Control Officer, Off-Site Emergency Organization
1102	0	12/30/82	Duties of the Recovery Manager, Off-Site Emergency Organization
1103	0	12/30/82	Duties of the Emergency Information Manager, Off-Site Emergency Organization
1104	0	12/30/82	Duties of the Emergency Security Manager, Off-Site Emergency Organization
1105	0	12/30/82	Duties of the Emergency Technical Manager, Off-Site Emergency Organization
1106	0	12/30/82	Duties of the Governmental Affairs Manager, Off-Site Emergency Organization
1107	0	12/30/82	Duties and Responsibilities of the Emergency Plan Administrator
1201	0	12/30/82	Activation and Use of the Emergency News Center (St. Lucie)
1202	0	01/03/83	Activation and Use of the Interim Emergency Operations Facility (St. Lucie)
1301	2	08/01/83	Emergency Roster - Off-Site Emergency Organization
_____	_____	_____	_____
_____	_____	_____	_____
_____	_____	_____	_____
_____	_____	_____	_____

NOV 17 1983

Page 1 of 3
November 1983

ST. LUCIE PLANT
OPERATIONAL PROCEDURES INDEX

Applicable to both Units 1 and 2

<u>PROCEDURE #</u>	<u>REV.</u>	<u>TITLE</u>
0010122	19	In-Plant Equipment Clearance Orders
0010126	3	Containment and Shield Building Access Control
0010129	5	Equipment Out-Of-Service - Class I
0030119	0	Post Trip Review
0030129	5	Reactor Trip Records
0120021	11	Draining the Reactor Coolant System
0120026	10	Reactivity - Deviation From Design
0230021	2	Liquid Nitrogen Dewar Operation
0360050	5	Emergency Cooling Water Canal -Periodic Test
0420051	3	CS - Spray Nozzle Air Flow Test
0520023	0	Dewatering Radioactive Bead Resins
0610021	3	Main Condenser Hydrostatic Test
0630022	0	Hypochlorite System Operation
0910020	4	Removal & Restoration of SU Transformer
0910050	2	Startup Transformer Periodic Test
1120051	0	Periodic Calibration & Test SGBIF ARMS

NOV 17 1983

Page 2 of 3
November 1983ST. LUCIE PLANT
OPERATIONAL PROCEDURES INDEX

<u>PROCEDURE #</u>	<u>REV.</u>	<u>TITLE</u>
1200022	6	Periodic Surveillance of Incore Detection System
1200023	6	Calculation of Internal Axial Shape Index (ASI _I)
1300052	14	Airlock Periodic Leak Testing
1400051	17	Meteorological Data System Daily Channel Check
1400054	7	Reactor Protection System - Loss of Turbine-Hydraulic Fluid Pressure Low
1400058	8	Seismic Instrumentation Periodic Check
1530020	6	Domestic Water System - Normal Operation
1540020	5	Water Plant Startup & Shutdown
1540021	5	Water Plant Regeneration
1540060	1	Water Plant Resin Replacement
1550020	3	Vacuum Degasifier Operation
1600060	1	Source Handling and Installation
1800020	6	Fire Protection System Operation
1800021	5	Fire Detection System Operating Procedure
1800050	13	Fire System Periodic Test
1800053	9	Fire Protection System Annual and 18 Month Tests
2000021	0	Containment Radioactivity Removal System Operation

ADDED TO
UNIT I

NOV 17 1983

Page 3 of 3
November 1983

ST. LUCIE PLANT
OPERATIONAL PROCEDURES INDEX

<u>PROCEDURE #</u>	<u>REV.</u>	<u>TITLE</u>
3200021	5	Adial Shape Index Control
3200052	9	Monitoring Linear Heat Rate
3200057	4	Power Distribution Comparison with Design
3300020	3	FPL Health Physics Manual

NOV 17 1983

Page 1 of 1
November 1983

ST. LUCIE PLANT
PREOPERATIONAL PROCEDURES INDEX

Applicable to Both Units 1 and 2

<u>PROCEDURE #</u>	<u>REV.</u>	<u>TITLE</u>
0700071	0	CONDENSATE POLISHER FUNCTIONAL TEST.
0700099	1	Condensate Polisher Initial Test

NOV 17 1983

Page 1 of 2
November 1983

QUALITY INSTRUCTIONS INDEX

For Unit 1, Unit 2 and Plant Procedures

<u>PROCEDURE #</u>	<u>REV.</u>	<u>TITLE</u>
OI 1-PR/PSL-1	9	Plant Organization
OI 1-PR/PSL-2	6	Operations Organization
OI 1-PR/PSL-3	6	Instructions for Maintenance Organization
2-OI 1-PR/PSL-4	4	Startup Organization Unit 2
OI 1-PR/PSL-5	1	Technical Staff Organization
OI 1-PR/PSL-7	4	Quality Control Organization
OI 1-PR/PSL-8	0	Administrative Organization
OI 2-PR/PSL-1	5	Quality Assurance program
1-OI 2-PR/PSL-2	10	Indoctrination and Training of St. Lucie Plant Personnel
OI 3-PR/PSL-1	10	Design Control (After Fuel Loading)
OI 4-PR/PSL-1	4	Procurement Document Control
OI 4-PR/PSL-2	1	Procurement Document Review
OI 5-PR/PSL-1	24	Preparation, Revision, Review/Approval of Procedures
OI 5-PR/PSL-2	0	Writers Guide for Emergency Operating Procedures
OI 6-PR/PSL-1	6	Document Control
OI 7-PR/PSL-1	6	Control of Purchased Material, Equipment and Services

NOV 17 1983

Page 2 of 3
November 1983

QUALITY INSTRUCTIONS INDEX

<u>PROCEDURE #</u>	<u>REV.</u>	<u>TITLE</u>
OI 7-PR/PSL-2	10	Receiving Inspection
OI 8-PR/PSL-1	5	Identification Control of Materials, Parts and Components
OI 9-PR/PSL-1	2	Special Process Control
1-OI 9-PR/PSL-2	9	Control of Non-Destructive Examination
OI 9-PR/PSL-3	2	Welding Control
OI 10-PR/PSL-1	7	Quality Control Inspection
OI 10-PR/PSL-3	2	Inspection Instruction for Class 1, 2 and 3 Piping and Components
OI 10-PR/PSL-4	3	Plant Inservice Inspection
OI 10-PR/PSL-5	3	Technical Specification Surveillance Inspection of Reactor Building
OI 11-PR/PSL-1	6	Test Control
OI 11-PR/PSL-2	9	Mechanical Test Control
OI 11-PR/PSL-3	8	Electrical Test Control
OI 11-PR/PSL-4	10	Instrumentation & Control Test Control
OI 11-PR/PSL-5	2	Mechanical Start-up Test Control
OI 12-PR/PSL-1	10	Calibration of Measuring and Testing Equipment
OI 12-PR/PSL-2	7	Calibration of Instrument & Control Department Measuring and Test Equipment

NOV 17 1983

Page 3 of 3
November 1983

QUALITY INSTRUCTIONS INDEX

<u>PROCEDURE #</u>	<u>REV.</u>	<u>TITLE</u>
OI 12-PR/PSL-3	8	Electrical Measuring and Test Equipment
OI 12-PR/PSL-4	7	Instructions for Mechanical Maintenance Measuring and Test Equipment
OI 12-PR/PSL-5	2	Chemistry Measuring and Testing Equipment
OI 12-PR/PSL-6	7	Health Physics Measuring and Test Equipment
OI 12-PR/PSL-7	3	Calibration of Installed Plant Instrumentation and Control Equipment
OI 13-PR/PSL-1	7	Handling, Storage and Shipping
OI 13-PR/PSL-2	5	Cleanliness Control Methods
OI 14-PR/PSL-1	8	Inspection, Test and Operating Status
OI 15-PR/PSL-1	4	Nonconforming Materials, Parts & Components
OI 15-PR/PSL-2	10	Discrepancy Correction and Modifications During Construction and Testing
OI 16-PR/PSL-1	13	Corrective Action
OI 17-PR/PSL-1	5	Quality Assurance Records
OI 18-PR/PSL-2	9	Quality Control Surveillances
OI 18-PR/PSL-3	3	Quality Control Monitoring

_____	---	_____
_____	---	_____

NOV 17 1983

Page 1 of 1
November 1983

SECURITY PROCEDURES INDEX

<u>PROCEDURE #</u>	<u>REV.</u>	<u>TITLE</u>
* 0006022	9	Security Force
* 0006023	12	Personnel & Material Control
0006024	4	Employee Security Orientation Program
* 0006025	7	Lock & Key System
* 0006027	14	Safeguards Contingency Plan Implementing Procedures
0006122	4	Site Evacuation - Vehicle Traffic Control
0006123	5	Owner Controlled Area Evacuation
_____	---	_____
_____	---	_____
_____	---	_____
_____	---	_____
_____	---	_____

* Need to be stamped - SAFEGUARDS - Also send out in double envelopes

NOV 17 1983

ST. LUCIE UNIT 2
ADMINISTRATIVE PROCEDURE INDEX

[illegible]

NOV 17 1983

Copy # _____

ST. LUCIE UNIT 2
CHEMISTRY PROCEDURES INDEX

<u>PROCEDURE #</u>	<u>REV.</u>	<u>TITLE</u>
* 2-1730020	1	Secondary Sample System Valve Alignment (See OPS)*
2-C-09B	1	Tank Sampling
2-C-32	0	Operation of the IL643 Auto Cal Flame Photometer
2-C-57	1	Maintaining Refueling Water Tank Limits
2-C-60	1	Maintaining Safety Injection Tank Limits
2-C-62A	1	General Atomic Particulate, Iodine and Gas Process Monitor Operation
2-C-62B	1	General Atomic Single Stage Gaseous (S.S.G.) Process Monitor Operation
2-C-62C	1	General Atomic Single Stage Liquid (SSL) Process Monitor Operation
2-C-62D	1	General Atomic Wide Range Gas (WRGM) Process Monitor Operation
2-C-62F	0	Remote Operation of the General Atomic Process Monitor System
2-C-66A	1	Technical Specification Calibration of the General Atomic Gas, Liquid and and Steam Line Process Monitors
2-C-66B	1	Calibration of the General Atomic Gas, Liquid and Steam Line Process Monitors (Non Tech. Specs)

NOV 17 1983

Copy # _____

ST. LUCIE UNIT 2
CHEMISTRY PROCEDURES INDEX

<u>PROCEDURE #</u>	<u>REV.</u>	<u>TITLE</u>
2-C-73A	0	Secondary Chemical Additions System Operation
2-C-80	1	Determination of Hydrogen Gas in Containment
2-C-113	1	Operation of the CE Post Accident Sampling System (PASS)
_____	_____	_____
_____	_____	_____
_____	_____	_____

NOV 17 1983
Copy # _____

ST. LUCIE UNIT 2
GENERAL MAINTENANCE PROCEDURE INDEX

<u>PROCEDURE #</u>	<u>REV.</u>	<u>TITLE</u>
2-M-0019	1	St. Lucie Unit 2 Rotating Equipment Initial Alignment Guidelines
2-M-0024	1	Component Cooling Water Pump - Disassembly and Reassembly
2-M-0025	0	HPSI Pump Disassembly & Reassembly
2-M-0032	0	Pressurizer Heater Replacement
2-M-0035	1	Intake Cooling Water Pump Disassembly, Repair and Reassembly
2-M-0036	1	Reactor Vessel Maintenance - Sequence of Operations
2-M-0037	1	Power Operated Relief Valve Maintenance
2-M-0038	0	Radioactive Filter Cartridge Replacement
2-M-0041	1	Charging Pump Maintenance
_____	---	_____
_____	---	_____
_____	---	_____

Copy # _____

ST. LUCIE UNIT 2
I & C PROCEDURES INDEX

NOV 17 1983

<u>PROCEDURE #</u>	<u>REV.</u>	<u>TITLE</u>
2-0110051	0	Analog Display System Calibration
2-0120050	0	Reactor Protection System RCS Low Flow Trip Setpoint Determination
2-0210050	0	Boronometer Channel Calibration
2-0540050	0	Periodic Calibration of Steam Header Pressure Monitors or HSCP
2-0540051	0	Remote Plant Instrumentation Calibration
2-0700051	1	Auxiliary Feedwater Actuation System - Monthly Functional Test
2-1130050	0	Loose Parts Monitoring System Functional Test
2-1200054	1	Low Temperature Overpressure Protection Setpoint Verification
2-1200055	0	Functional Calibration of the Automatic Isolation of the Shutdown Cooling System from the Reactor Coolant System
2-1200061	0	BF ₃ Proportional Counter Acceptance Test
2-1210052	0	BF ₃ Plateau Curve Determination
2-1220050	2	Safety Channel Quarterly Calibration
2-1220051	0	Startup and Control Channel Quarterly Calibration
2-1220052	2	Linear Power Range Safety and Control Channel Monthly Calibration
2-1240061	0	Installation and Removal of the Movable Incore System

Copy # _____

ST. LUCIE UNIT 2
I & C PROCEDURES INDEX

NOV 17 1983

<u>PROCEDURE #</u>	<u>REV.</u>	<u>TITLE</u>
2-1400050	3	Reactor Protection System - Monthly Functional Test
2-1400052	3	Engineered Safeguards Actuation System Channel Functional Test
2-1400063	1	Sequence of Events Recorder Program Loading
2-1400064	0	Installed Plant Instrumentation Calibration
2-1400153	0	Reactor Protection System - Engineered Safeguards System Loop Instrumentation Calibration
2-1400154	0	Reactor Coolant Leakage Detection System Calibration
2-1400155	1	Channel Calibration - Thermal Margin/Low Pressure Refueling
2-1400158	1	Reactor Protection System Local Power Density Refueling Channel Calibration
2-1400159	0.	Power Ratio Calculator, Refueling Calibration
2-1400160	0	Channel Calibration - Delta T Power - Quarterly
2-1400162	0	RPS and Safeguard Response Time Test
2-1400162A	0	Reactor Protection System - RTD Time Response Test Data Collection
2-1400163	0	Reactor Protection System - Power Ratio Periodic Test
2-1400164	2	RPS-Refueling Calibration - Trip Bypass Logic Operability
2-1400166	1	Engineered Safeguards Actuation System - ATII Alignment Check

Copy # _____

ST. LUCIE UNIT 2
I & C PROCEDURES INDEX

NOV 17 1983

<u>PROCEDURE #</u>	<u>REV.</u>	<u>TITLE</u>
2-1400170	0	PORV and Safety Valve Position Indicator Channel Calibration
2-1400171	0	Reactor Cavity and Containment Level System Calibration
2-1400172	1	Safety Injection Tank Level and Pressure Monthly Functional Test
2-2000054	0	Periodic Calibration of Hydrogen Recombiner Temperature Instrumentation
2-3400023	0	Polar Crane Weight Indication Calibration

NOV 17 1983

Page 1 of 1
November 1983

Copy # _____

ST. LUCIE UNIT 2
MAINTENANCE PROCEDURES INDEX

<u>PROCEDURE #</u>	<u>REV.</u>	<u>TITLE</u>
2-0110060	3	Periodic Maintenance of Control Element Assembly (CEA) Drive Equipment and Switchgear
2-0910053	0	12 Month Test of Automatic Load Sequence Relays
2-0960060	1	125V DC System Periodic Maintenance and Tests
2-0960061	0	BOP 125 V DC System Periodic Test and Maintenance
2-0960062	2	Safety Battery 2A Emergency Load Profile Test
2-0960063	0	Safety Battery 2B Emergency Load Profile Test
2-0970060	2	Periodic Maintenance of the Instrument AC System
2-2200062	0	2A Emergency Diesel Electrical Inspection
2-2200063	0	2B Emergency Diesel Electrical Inspection
_____	_____	_____
_____	_____	_____
_____	_____	_____
_____	_____	_____

NOV 17 1983

Copy # _____

ST. LUCIE UNIT 2
OFF-NORMAL/EMERGENCY OPERATING PROCEDURES INDEX

<u>PROCEDURE #</u>	<u>REV.</u>	<u>TITLE</u>
2-0030130	4	Reactor Trip/Turbine Trip
2-0030131	2	Plant Annunciator Summary - Unit 2
2-0030132	4	Anticipated Transient Without Scram (ATWS)
2-0030133	0	Local Annunciator Summary
2-0030140	5	Blackout Operation
2-0030141	6	Control Room Inaccessibility
2-0030143	3	Total Loss of AC Power
2-0110030	3	CFA Off-Normal Operation and Realignment
2-0120031	0	Excessive Reactor Coolant System Leakage
2-0120034	0	Reactor Coolant Pump Off-Normal Operation
2-0120035	3	Pressurizer Pressure and Level - Off-Normal Operation
2-0120036	2	Pressurizer Relief/Safety Valve - Off-Normal Operation
2-0120037	3	Reactor Coolant Gas Vent System Off-Normal Operation
2-0120038	0	Out of Limit Steam Generator Chemistry Parameters

NOV 17 1983

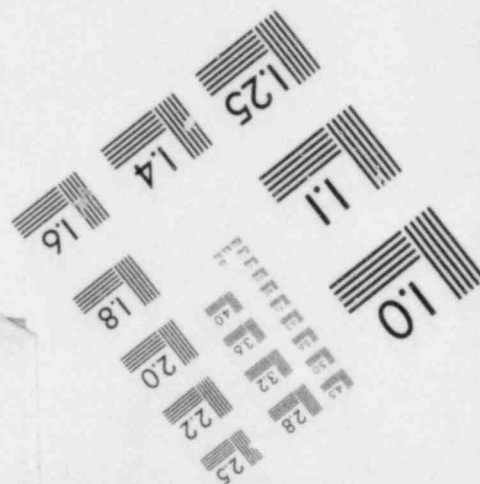
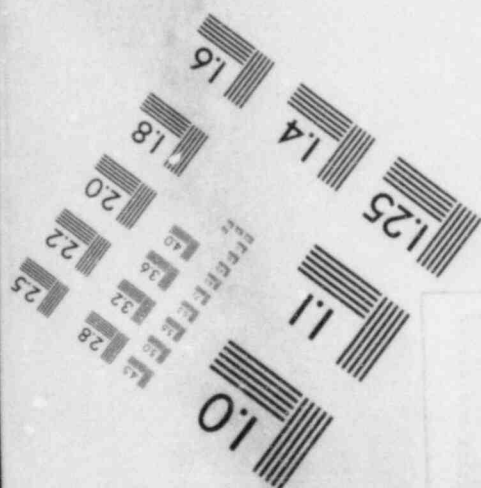
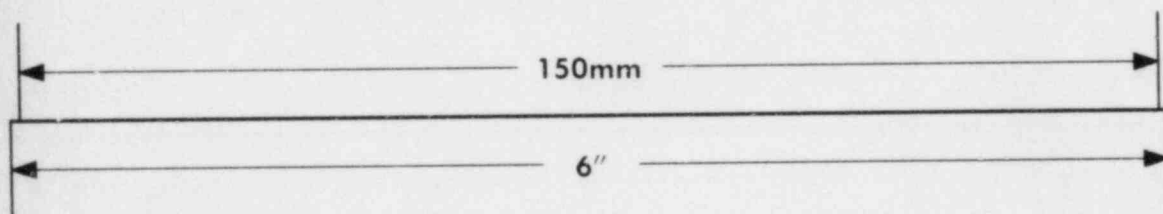
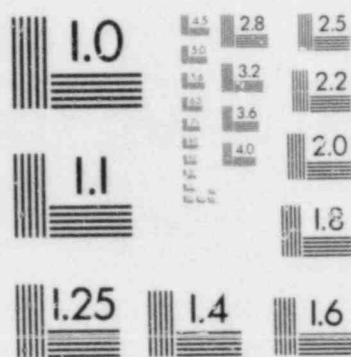
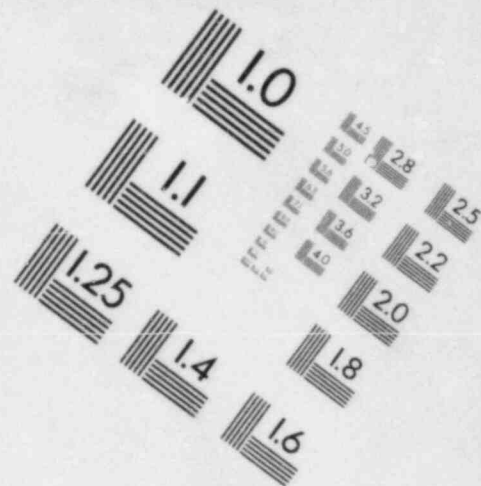
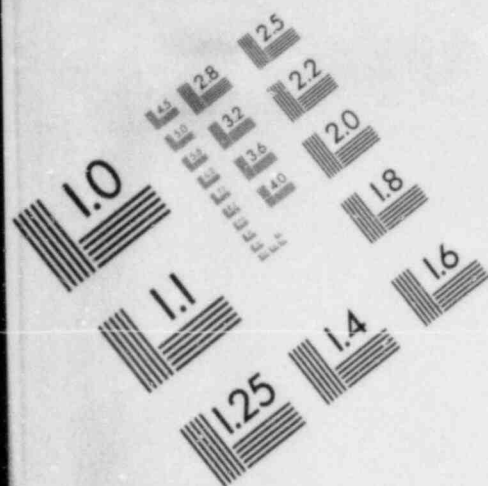
Page 2 of 5
November 1983

Copy # _____

ST. LUCIE UNIT 2
OFF-NORMAL/EMERGENCY OPERATING PROCEDURES INDEX

<u>PROCEDURE #</u>	<u>REV.</u>	<u>TITLE</u>
2-0120040	3	Natural Circulation/Cooldown
2-0120041	3	Steam Generator Tube Rupture (SGTR)
2-0120042	7	Loss of Coolant Accident* (LOCA)
2-0120043	2	Inadequate Core Cooling (ICC)
2-0210030	1	Charging and Letdown - Off-Normal Operation
2-0250030	2	Emergency Boration
2-0250031	1	Boron Concentration Control Off-Normal
2-0310030	2	Component Cooling Water Off-Normal Operation
2-0310031	2	CCW Excessive Activity
2-0330030	0	Turbine Cooling Water System Off-Normal Operation
2-0350030	0	Fuel Pool Cooling System - Off-Normal Operation
2-0360030	1	Operational Requirements for Emergency Cooling Water Canal
2-0410030	2	HPSI - Off-Normal Operation
2-0440030	1	SDC/LPSI - Off-Normal Operation
2-0510030	0	Uncontrolled Release of Radioactive Liquids

IMAGE EVALUATION
TEST TARGET (MT-3)



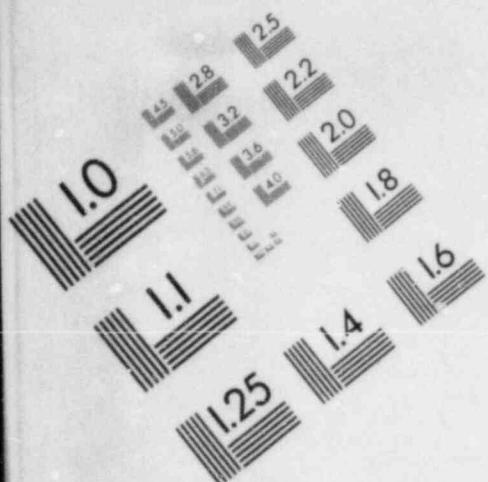
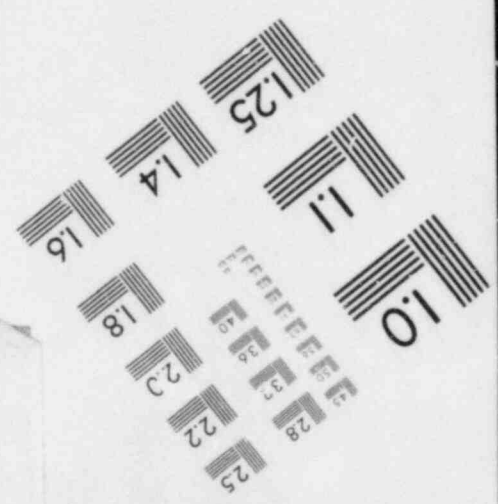
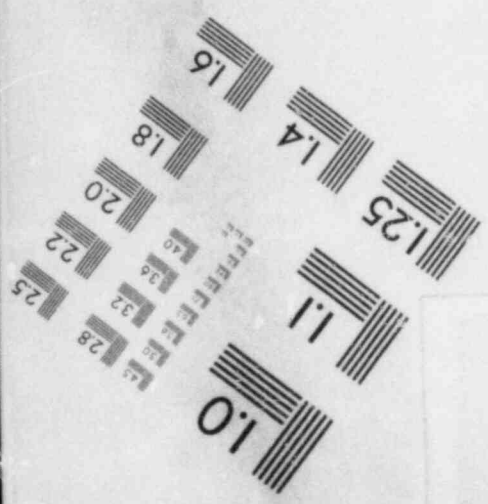
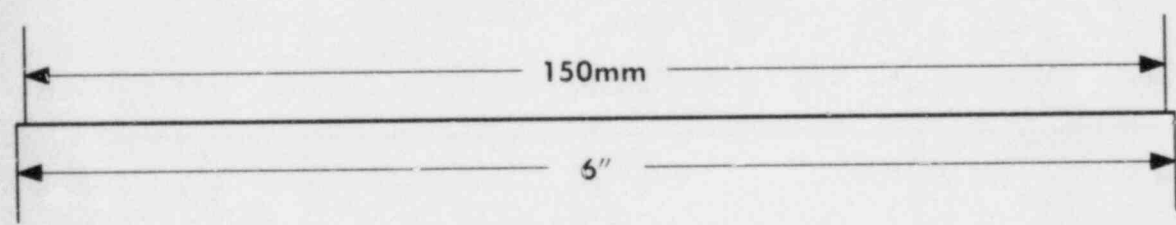
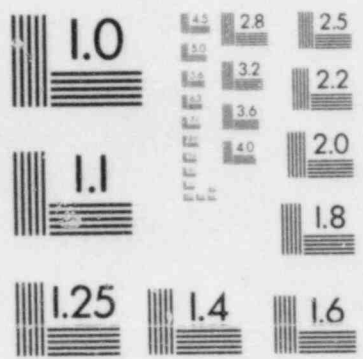
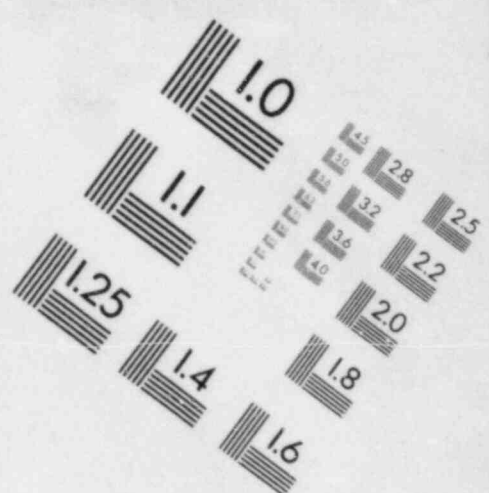


IMAGE EVALUATION
TEST TARGET (MT-3)



NOV 17 1983

Page 3 of 5
November 1983

Copy # _____

ST. LUCIE UNIT 2
OFF-NORMAL/EMERGENCY OPERATING PROCEDURES INDEX

<u>PROCEDURE #</u>	<u>REV.</u>	<u>TITLE</u>
2-0530030	1	Waste Gas System - Off-Normal Operation
2-0530031	0	Uncontrolled Release of Radioactive Gas
2-0610030	0	Condenser Tube Leak or S/G Level
2-0610031	0	Loss of Condenser Vacuum
2-0620030	0	Circulating Water System - High Delta T and High Discharge Temperature
2-0640030	1	ICW System - Off-Normal Operation
2-0700040	5	Loss of Feedwater or S/G Level
2-0810040	2	Main Steam Line Break
2-0910030	0	Startup Transformer Off-Normal Operation
2-0910031	0	Main Transformer Off-Normal Operation
2-0910032	0	Auxiliary Transformer Off-Normal Operation
2-0950030	1	Boric Acid Heat Tracing System Off-Normal Operation
2-0960030	2	DC Ground Isolation
2-0970030	0	120V Instrument AC System (Class 1E) Off-Normal Operation

NOV 17 1983

Page 4 of 5
November 1983

Copy # _____

ST. LUCIE UNIT 2
OFF-NORMAL/EMERGENCY OPERATING PROCEDURES INDEX

<u>PROCEDURE #</u>	<u>REV.</u>	<u>TITLE</u>
2-0970031	0	Loss of SUPS-Non-Safety Vital AC or Fire and Security Inverters
2-1010030	1	Loss of Instrument Air
2-1110030	0	Off-Normal Operation of the Letdown Monitor
2-1110031	0	Off-Normal Operation of the Condenser Air Ejector Monitor
2-1110032	0	Off-Normal Operation of the Liquid Waste Process Monitor
2-1110033	0	Off-Normal Operation of the Gaseous Waste Monitor
2-1110034	0	Off-Normal Operation of the Plant Vent Process Monitor
2-1110035	0	Off-Normal Operation of the Containment Process Monitor
2-1110036	0	Off-Normal Operation of the Component Cooling Water Process Monitors A & B
2-1110037	0	Off-Normal Operation of the Steam Generator Blowdown Process
2-1110038	0	Off-Normal Operation of the Fuel Building Effluent Monitor (FBEM)
2-1120030	0	Off-Normal Operation of the Area Radiation Monitoring System
2-1300030	1	Loss of Containment Integrity - Off-Normal Operation
2-1300031	0	Air Locks Off-Normal Operation
2-1560030	0	Primary Water System Off-Normal

NOV 17 1983

Page 5 of 5
November 1983

Copy # _____

ST. LUCIE UNIT 2
OFF-NORMAL/EMERGENCY OPERATING PROCEDURES INDEX

<u>PROCEDURE #</u>	<u>REV.</u>	<u>TITLE</u>
2-1600030	1	Accidents Involving New or Spent Fuel
2-1900030	2	Auxiliary Building and Control Room Ventilation Off-Normal Operation
2-2000030	0	Loss of Reactor Cavity Cooling Fans or Reactor Support Cooling Fans

NOV 17 1983

Page 1 of 9
November 1983

Copy # _____

ST. LUCIE UNIT 2
OPERATIONAL PROCEDURES INDEX

<u>PROCEDURE #</u>	<u>REV.</u>	<u>TITLE</u>
2-0010126	0	Containment and Shield Building Access Control
2-0030120	8	Prestart Check-off List
2-0030121	8	Reactor Plant Heat-Up-Cold to Hot Standby
2-0030122	3	Reactor Startup
2-0030123	2	Reactor Operator Guidelines During Steady State and Scheduled Load Changes
2-0030124	4.5	Turbine Startup Zero to Full Load
2-0030125	1	Turbine Shutdown Full Load to Zero Load
2-0030126	1	Estimated Critical Conditions and Inverse Count Rate Ratio
2-0030127	6	Reactor Plant Cooldown - Hot Standby to Cold Shutdown
2-0030128	1	Reactor Shutdown
2-0030150	4.2	Secondary Plant Operating Checks and Tests
2-0030151	3	Remote Shutdown Monitoring Instrumentation Periodic Channel Check and Selector Switch Position Verification
2-0030222	1	EOL Post-Trip Recovery
2-0110020	5	CEM MG Set Operation
2-0110022	1	Coupling and Uncoupling of CEA Extension Shafts
2-0110050	3	Control Element Assembly Periodic Exercise
2-0110054	0	Periodic Rod Drop Time Test and CEA Position Functional Test

NOV 17 1983

Copy # _____

ST. LUCIE UNIT 2
OPERATIONAL PROCEDURES INDEX

<u>PROCEDURE #</u>	<u>REV.</u>	<u>TITLE</u>
2-0110055	2	Surveillance Requirements for Shutdown Margin Modes 1 and 2 (Critical)
2-0110055A	2	Shutdown Margin Suspension During Zero Power Physics Testing
2-0110056	3	Surveillance Requirements for Shutdown Margin Modes 2, 3, 4, 5 Sub-Critical
2-0110057	3	Periodic Surveillance of DNB Margin
2-0110059	1	Suspension of Group Height, Insertion and Power Dist. Limit Requirements
2-0120020	3/6	Filling & Venting the RCS
2-0120021	4	Draining the Reactor Coolant System
2-0120022	1	Leak Test Following RCS Opening
2-0120023	3	Reactor Cooling Pump Normal Operation
2-0120024	2/2	Pressurizer Steam Space Venting
2-0120025	2	Quench Tank Operation
2-0120027	1	Steam Generator Wet Lay-Up
2-0120028	0	Demonstration of Xenon Dampening
2-0120051	1	RCS Flow Determination by Calorimetric
2-0120461	0	Steam Generator Secondary Cold Hydro, <805 psig
2-0210020	3/6	Charging and Letdown - Normal Operation
2-0210021	0	VCT-Hydrogen & Nitrogen Concentration Control

NOV 17 1983

Page 3 of 9
November 1983

Copy # _____

ST. LUCIE UNIT 2
OPERATIONAL PROCEDURES INDEX

<u>PROCEDURE #</u>	<u>REV.</u>	<u>TITLE</u>
2-0220020	2	Hydrogen System Normal Operation
2-0230020	1	Nitrogen System Normal Operation
2-0250020	45	Boron Concentration Control - Normal Operation
2-0250021	2	Boric Acid Batching and Transferring
2-0310020	5	Component Cooling Water - Normal Operation
2-0330020	2	Turbine Cooling Water Normal Operation
2-0350020	0	Fuel Pool Cooling and Purification System - Normal Operation
2-0400053	0	Engineered Safeguards Relay Test
2-0410020	5	HPSI/LPSI Normal Operation
2-0410021	3	Safety Injection Tank, Normal Operation
2-0410050	3	HPSI/LPSI Periodic Test
2-0410052	1	Check Valve Back Leakage
2-0420020	3	Containment Spray Initial Valve Alignment
2-0420050	5	Containment Spray and Iodine Removal System - Periodic Test, Pump and Valve Operability
2-0510020	1	Oxygenated Waste System
2-0510021	0	Waste Concentrator Operation
2-0510022	1	Controlled Liquid Release to the Circulating Water Discharge

NOV 17 1983

Copy # _____

ST. LUCIE UNIT 2
OPERATIONAL PROCEDURES INDEX

<u>PROCEDURE #</u>	<u>REV.</u>	<u>TITLE</u>
2-0520020	1	Radioactive Resin Replacement
2-0520021	0	Solid Waste Baler Operation
2-0520022	0	Drumming Station Operation for Drumming of Concentrator Bottoms
2-0530020	3	Waste Gas System Operation
2-0530021	2	Controlled Gaseous Batch Release to Atmosphere
2-0540020	4	Boron Recovery System Lineup
2-0540021	1	Boric Acid Concentrator Operation
2-0610020	0	Operation of the Cathodic Protection System
2-0610029	0/	Condenser Air Removal System Operations
2-0620020	3	Circulating Water System Normal Operation
2-0640020	3	ICW System Operation
2-0700020	1	Condensate Feedwater System - Normal Operation
2-0700021	2	Heater Drain and Vent System Alignment
2-0700022	45	Auxiliary Feedwater - Normal Operation
2-0700023	0	Feedwater Heaters - Placing In or Removing From Service
2-0700024	1	Condensate Recovery System Operation
2-0700025	1	Feedwater Recirculation Line Filter Operation

NOV 17 1983

Page 5 of 9
November 1983

Copy # _____

ST. LUCIE UNIT 2
OPERATIONAL PROCEDURES INDEX

<u>PROCEDURE #</u>	<u>REV.</u>	<u>TITLE</u>
2-0700050	3	Auxiliary Feedwater Periodic Test
2-0810020	2	Main Steam System Initial Valve Alignment
2-0810021	0	Steam System Cross Connect Operation - St. Lucie Unit 1 Supplying St. Lucie Unit 2
2-0810050	2	Main Steam Feedwater Isolation Valves Periodic Test
2-0810051	1	Steam Dump and Bypass System Functional Test
2-0820020	3	Auxiliary Steam System - Placing in Service
2-0830020	0	Blowdown System Operation
2-0910020	0	Removal and Restoration of a Start-Up Transformer
2-0910021	0	Backfeed 2A and 2B Main Auxiliary Transformers from Midway Line #3
2-0910051	0	Main Transformer Periodic Test
2-0910052	0	Auxiliary Transformer Periodic Test
2-0950020	0	Boric Acid Heat Tracing System Operation
2-0960020	3	125V DC Class 1E Power System Normal Operation
2-0960022	1	BOP 125V DC Ssystem Normal Operation
2-0970020	2	Operation of the 120V Instrument AC System (Class 1E)
2-0970021	1	120 Volts Vital AC System Operation
2-0970022	0	Operation of the CSPDS Inverter

NOV 17 1983

Copy # _____

ST. LUCIE UNIT 2
OPERATIONAL PROCEDURES INDEX

<u>PROCEDURE #</u>	<u>REV.</u>	<u>TITLE</u>
2-0970023	0	Operation of the Security and Fire Protection Inverter
2-1010020	3	Instrument Air System Operation
2-1010022	2	Instrument Air System - Initial Valve Alignment
2-1020020	1	Station Air System Operation
2-1110020	0	Process Monitoring System Operation
2-1110021	0	General Atomic Wide Range Gas (WRGM) Process Monitor Operation
2-1120020	0	Remote Operation of the General Atomic Radiation Monitoring System
2-1120050	2	Functional Testing of the Unit 2 Area Radiation Monitoring System
2-1120060	1	Calibration of the PSL-2 Area Radiation Monitoring System
2-1170020	1	Demineralized Water System - Initial Valve Alignment
2-1200051	0	Nuclear and Delta T Power Calibration
2-1210020	0	Startup Nuc. Inst. Channels Functional Test
2-1210030	1	Wide Range Nuclear Instrumentation Channel Malfunction
2-1210051	0	Wide Range Nuclear Instrumentation Channels Functional Test
2-1300020	1	Containment Building Access Hatches - Operation
2-1300051	0	Local Leak Rate Testing
2-1300054	01	RAB Fluid Systems Periodic Leak Test

NOV 17 1993

Copy # _____

ST. LUCIE UNIT 2
OPERATIONAL PROCEDURES INDEX

<u>PROCEDURE #</u>	<u>REV.</u>	<u>TITLE</u>
2-1300055	0	Purge Valve Leak Rate Test
2-1400020	0	Sequence of Events Recorder Operation
2-1400057	3	Reactor Regulating System Functional Test
2-1400059	3	Reactor Protection System - Periodic Logic Matrix Test
2-1560020	2	Primary Water System
2-1600023	2	Refueling Sequencing Guidelines
2-1600024	1	Filling and Draining the Refueling Canal and Cavity
2-1600025	0	Fuel Handling Building Ventilation System - Periodic Test
2-1610020	4	Receipt and Handling of New Fuel
2-1630021	1	New Fuel Elevator Operation
2-1630022	1	Spent Fuel Handling Machine Operation
2-1630023	0	Fuel Transfer System Operation
2-1630024	1	Refueling Machine Operation
2-1630025	0	CEA Change Fixture Operation
2-1630027	0	Dry Shipping of Irradiated Fuel Assemblies
2-1630028	3	New Fuel Handling Crane Operation
2-1710020	2	Primary Sample System Valve Alignment

NOV 17 1983

Copy # _____

ST. LUCIE UNIT 2
OPERATIONAL PROCEDURES INDEX

<u>PROCEDURE #</u>	<u>REV.</u>	<u>TITLE</u>
2-1720020	3	Gas Analyzer Operation
2-1730020		See Chemistry
2-1800057	0	Surveillance of Fire Protection Sprinkler System for RAB and Diesel Generator Building
2-1900020	1	Reactor Auxiliary and Control Room Ventilation System Operation
2-1900050	2	Control Room Pressure Periodic Test
2-2000020	1	Containment Cooling System Operation
2-2000023	2	Continuous Containment/Hydrogen Purge System Operation
2-2000024	1	Shield Building Ventilation Operation
2-2000053	1	Hydrogen Recombiner
2-2100020	2	Turbine Seal Oil System Operation
2-2100021	1	Generator Gas System Operation
2-2100022	3	Turbine Lube Oil System Operation
2-2100023	0	Generator Air Leakage Rate Drop Test
2-2200020	4	Emergency Diesel Generator Standby Lineup
2-2200050	3	Emergency Diesel Periodic Test
2-3200020	2	Primary System Manual Colorimetric
2-3200050	0	Calculation and Adjustment of Fixed Incore Detection Alarm Setpoints

Nov 17 1983

Copy # _____

ST. LUCIE UNIT 2
OPERATIONAL PROCEDURES INDEX

<u>PROCEDURE #</u>	<u>REV.</u>	<u>TITLE</u>
2-3200051	1	At Power Determination of Moderator Temperature Coefficient and Power Coefficient
2-3200053	1	Surveillance Requirements for Azimuthal Power Tilt (T_q)
2-3200054	2	Surveillance Requirement for Total Integrated Radial Peaking Factor (F_r^T)
2-3200058	1	Surveillance Requirements for Total Planar Radial Peaking Factor (F_{xy}^T)
2-3200059	1	Forced Xenon Oscillation Test

ST. LUCIE UNIT 2
PREOPERATIONAL TEST PROCEDURES INDEX

<u>PROCEDURE #</u>	<u>REV.</u>	<u>TITLE</u>
2-0010080	1	Calibration and Functional Testing of Installed Instrumentation and Control Equipment
2-0010180	1	Power Ascention Sequencing Document
2-0010181	0	Pre-Core Hot Functional Sequencing Document
2-0010184	0	Reactor Coolant System Component Expansion Measurement
2-0010185	0	Piping Thermal Expansion and Restraints
2-0010187	0	Reactor Cavity Sump Leak Detector Test
2-0010188	0	Sump Pump Preoperational Test
2-0010189	0	Reactor Coolant System Component Expansion Measurement - Post Core
2-0010190	0	Post Core Hot Functional Sequencing Document
2-0010191	1	Reactor Coolant System Heat Loss Measurement
2-0010192	1	Reactor Coolant System (RCS) Coastdown and Flow Measurement
2-0010193	0	Generator Ventilation System Verification
2-0010194	0	Piping Thermal Expansion and Restraint Post Core
2-0010196	1	Piping Vibration Monitoring
2-0010197	0	Pump and Valve Baseline Data
2-0010198	0	Baseline Leak Check of System Outside Containment Processing Primary Coolant
2-0010199	0	Operability Qualification of Valves

NOV 17 1983

Page 2 of 15
November 1983ST. LUCIE UNIT 2
PREOPERATIONAL TEST PROCEDURES INDEX

<u>PROCEDURE #</u>	<u>REV.</u>	<u>TITLE</u>
2-0030180	0	Annunciator-Preoperational Functional Test
2-0030190	0	Remote Cold Shutdown Demonstration
2-0030221	1	Unit 2 Initial Criticality
2-0110052	1	Unit 2 Zero Power Physics Test
2-0110081	0	CEM Rod Drop Test
2-0110082	0	CEA Position Indication & Alarm System Preoperational Functional Test
2-0110084	0	CEM MG Set Functional Test
2-0110090	0	10% Load Reduction - Turbine Runback
2-0110092	1	CEM Coil Temperature Measurement
2-0110093	1	CEM Coil and Cable Resistance Measurements
2-0110095	0	CEM Pre-Core Functional Test
2-0120035	0	Reactor Coolant Pump Motors -- Initial Run
2-0120080	1	Hydrostatic Pressure Test of the Reactor Coolant System & High Pressure Portions of Associated Systems
2-0120082	0	RCS Cooldown From 300°F
2-0120083	0	RCS Flow Measurement
2-0120084A	0	Natural Circulation Training (Pre-Critical)
2-0120086	0	Reactor Coolant Gas Vent System Preop Test

ST. LUCIE UNIT 2
PREOPERATIONAL TEST PROCEDURES INDEX

<u>PROCEDURE #</u>	<u>REV.</u>	<u>TITLE</u>
2-0120087	1	Quench Tank Preoperational Test
2-0120088	0	Pressurizer Relief Isolation Valves V-1476 and V-1477 Functional Test
2-0120089	0	Pressurizer Safety Valve Test, System Valve Numbers C1200, V1201, V1202
2-0120090	2	Feedwater, Steam Generator Secondary & Mainsteam Cold Hydro
2-0120091	0	Main Steam Safety Valve Test, System Valve Numbers 21-SR 201 through 21-SR 8216
2-0120093	2	Reactor Coolant System Leakage Monitoring Test
2-0120094	0	Reactor Coolant Pump Initial Run
2-0120095	0	Narrow Range Instrumentation Calibration Check
2-0120096	0	Pressurizer Control Functional Test
2-0120097	0	Pressurizer Spray and Control - Post Core
2-0120098	1	Low Temperature Over-Pressure Protection (LTOP) Functional Test
2-0210080	1	Charging System Preoperational Test
2-0210081	1	CVCS Functional Test
2-0210082	1	Boronometer Preoperational & Functional Test
2-0220080	0	Gas Systems Supply Test Includes N ₂ & H ₂
2-0250081	0	Boric Acid Make-Up System Functional Test
2-0250082	0	Boric Acid Make-Up Pump, Initial Pump Run

NOV 17 1983

Page 4 of 15
November 1983ST. LUCIE UNIT 2
PREOPERATIONAL TEST PROCEDURES INDEX

<u>PROCEDURE #</u>	<u>REV.</u>	<u>TITLE</u>
2-0250083	0	Boron and Boron Dilution Test
2-0250084	0	Verification and Monitoring of Boron Concentration Prior to and During Initial Core Loading
2-0310080	0	Component Cooling Water Functional Test & Flow Balance
2-0310081	0	Component Cooling Water Pumps Initial Run
2-0330080	1	Turbine Cooling Water System Functional Test
2-0350080	0	Fuel Pool Cooling & Purification System Functional Test
2-0400080	0	Integrated Test of Engineered Safety Features
2-0410080	0	High Pressure Safety Injection Pump Full Verification and Flow Distribution Test
2-0410082	1	Safety Injection Tank Dump Test
2-0410083	1	Safety Injection Check Valve Hot Flow Verification
2-0410084	1	High Pressure Safety Injection System-Initial Pump Run
2-0420080	0	Containment Spray Full Flow Test
2-0420081	0	Containment Spray Initial Pump Run
2-0420082	1	Iodine Removal System Preoperational and Functional Test
2-0420083	0	LPSE Pump Isolation Valves V3432 AND V3444 Functional Test
2-0430080	1	Refueling Water System Preoperational and Functional Test
2-0440080	1	Low Pressure Safety Injection Pump Initial Run

NOV 17 1983

Page 5 of 15
November 1983ST. LUCIE UNIT 2
PREOPERATIONAL TEST PROCEDURES INDEX

<u>PROCEDURE #</u>	<u>REV.</u>	<u>TITLE</u>
2-0440081	1	Low Pressure Safety Injection Test Through the Shut-Down Cooling Heat Exchange
2-0440082	0	Retest of Safeguards Pump Miniflow Recirc Solenoid Valves
2-0510080	0	Liquid Waste System Preoperational Test
2-0510081	0	Waste Concentrator 2A Functional Test
2-0510082	2	Laundry Drain Pumps 2A & 2B Initial Run
2-0510083	1	Equipment and Chemical Drain System Functional
2-0510084	0	Waste Condensate Pumps 2A & 2B Initial Run
2-0520080	0	Waste Compactor Functional Test
2-0520081	0	Spent Resin Functional Test
2-0530080	2	Waste Management System Functional Test -- Gaseous Waste System
2-0540080	1	Boron Recovery System Function Test
2-0540081	0	Boric Acid Concentrators 2A, 2B System Functional Test
2-0610081	0	Water Box Air Removal and Condenser Air Evacuation and Leak Test
2-0610082	0	Condenser Pit & Yard Sump Pump Functional Test
2-0610083	1	Condenser Water Box Cathodic Protection Initial Operation Test
2-0610084	1	Intake Structure Cathodic Protection Initial Operation Test
2-0620080	0	Circulation Water System Preoperational Test

ST. LUCIE UNIT 2
PREOPERATIONAL TEST PROCEDURES INDEX

<u>PROCEDURE #</u>	<u>REV.</u>	<u>TITLE</u>
2-0620081	0	Intake Structure Apparatus
2-0630080	0	Hypochlorite System Functional Test
2-0630085	1	St. Lucie Circulating Water Canal Test
2-0640080	2	Intake Cooling Water Preoperational Test
2-0700080	0	Feedwater System Test
2-0700081	1	Auxiliary Feedwater Functional Test
2-0700082	1	Heater Drain Pump Initial Run
2-0700083	1	Condensate Transfer System Preoperational and Functional Test
2-0700084	1	Condensate Recovery System Preoperational Test
2-0700085	0	Secondary Chemical Feed System Functional Test
2-0700086	0	Feedwater Regulating System
2-0700087	0	Heater Drain System Functional Test
2-0700088	1	Condensate Pump Initial Run
2-0700091	0	Auxiliary Feedwater Pumps 2A & 2B Initial Run
2-0700092	2	Condensate System Functional Test
2-0700093	0	2C Auxiliary Feedwater Pump Turbine Driver Oil System Flush
2-0700094	0	Auxiliary Feedwater Pump 2C Initial Run

ST. LUCIE UNIT 2
PREOPERATIONAL TEST PROCEDURES INDEX

<u>PROCEDURE #</u>	<u>REV.</u>	<u>TITLE</u>
2-0700095	0	Auxiliary Feedwater System Endurance Test
2-0700096	0	Auxiliary Feedwater Actuation System (AFAS) Cabinet Test
2-0700097	0	Auxiliary Feedwater Pump 2C and Atmospheric Steam Dump Manual Operation Functional Test
2-0700098	0	AFAS Initial Response Time Test
2-0760080	1	Digital Data Processor Preoperational Functional Test
2-0810081	0	Steam Bypass Control System (SBCS) Cabinet Preop Functional Test
2-0810082	0	Main Steam Isolation Valve Test
2-0810083	0	Atmospheric Steam Dump and Turbine Bypass System Hot Functional Test
2-0810084	0	Chemical Cleaning Procedure for the Secondary Cycle
2-0830080	0	Steam Generator Blowdown Functional Test
2-0830086	0	Steam Generator Blowdown Cooling System Functional Test
2-0910082	0	Initial Operation of the 4.16 KV Switchgear
2-0910083	4	480V AC Load Center & Motor Control Center Initial Operation
2-0910084	0	Initial Operation of the 6.9 KV Switchgear
2-0910085	1	Main Generator Excitation System Initial Operation
2-0910086	1	Start-Up Transformer 2A & 2A4 and 2B4 Preoperational Testing
2-0910087	0	Start-Up Transformer 2B - Preoperational Test

NOV 17 1983

Page 8 of 15
November 1983ST. LUCIE UNIT 2
PREOPERATIONAL TEST PROCEDURES INDEX

<u>PROCEDURE #</u>	<u>REV.</u>	<u>TITLE</u>
2-0910088	0	480V AC Pressurizer Load Centers and 480V AC Pressurizer Power Panels
2-0910089	0	*2A and 2B Main Auxiliary Transformers Backfeed From Line #3
2-0950080	0	Boric Acid Heat Tracing Functional Test (Chem. Volume Control System)
2-0950081	1	Station Grounding System
2-0950082	1	120/208 V AC Class IE Electrical Sys. Functional Test
2-0950083	2	120/208 V AC Non-Class Electrical System Functional Test
2-0950084	0	120/208 V AC Normal Emergency Lighting System Functional Test & Lighting Survey
2-0950085	0	Boric Acid Heat Tracing Functional Test (Waste Management)
2-0950086	0	120/208 V AC Lighting System Functional Test & Lighting Survey
2-0960080	3	Initial Operation of the Class IE 125 VDC Power System
2-0960081	2	Battery Test Discharge
2-0960082	0	BOP Battery Test Discharge
2-0960083	1	Safety Battery Emergency Load Profile Test
2-0960084	0	125V DC Bus 2 C Initial Operation
2-0960085	1	125V DC Emergency Lighting Functional Test and Light Survey
2-0960086	0	2AA, 2BB, 2B and 2AB Battery Charge Load Test
2-0970080	1	Instrument AC System Initial Operation

NOV 17 1983

Page 9 of 15
November 1983ST. LUCIE UNIT 2
PREOPERATIONAL TEST PROCEDURES INDEX

<u>PROCEDURE #</u>	<u>REV.</u>	<u>TITLE</u>
2-0970081	0	Vital AC System Initial Operation
* 2-0970082	0	AC Security System
2-0970083	0	480 VAC Security Lighting System Functional Test and Lighting Survey
2-0980080	0	Communications System Functional Test
2-0980081	1	Communications (On and Offsite) Preoperational and Functional Test
2-1010080	1	Instrument Air System Preoperational and Functional Test
2-1010081	0	Loss of Instrument Air to Safety Related Valves
2-1010083	0	Air Compressor Alternate Cooling System
2-1020080	0	Station Air System Preoperational Test
2-1110080	0	Gas and Liquid Radiation Monitors Preoperational and Functional Test
2-1110082	0	Wide Range Gas Monitor (WRGM) Preoperational Functional Test
2-1110083	0	Integrated Radiation Monitoring System Preoperational Test
2-1110092	0	Particulate/Iodine/Gas (P.I.G.) Preoperation Functional Test
2-1120080	0	Area Radiation Monitors Preoperational and Functional Test
2-1130080	1	Loose Parts Monitoring System Functional Test
2-1130082	0	Loose Parts Monitoring System Baseline Data and Trigger Calibration

* Need to stamp SAFEGUARDS. Also send out in double envelope.

ST. LUCIE UNIT 2
PREOPERATIONAL TEST PROCEDURES INDEX

<u>PROCEDURE #</u>	<u>REV.</u>	<u>TITLE</u>
2-1200081	1	Incore Instrumentation Measurements
2-1210080	0	Startup/Control Channel Instrumentation
2-1210082	0	Neutron Response of Temporary Fuel Loading Channels and Plant Startup Nuclear Channels
2-1220080	1	Safety Channel Nuclear Instrumentation
2-1240080	1	Incore Instrumentation Preoperational Test
2-1240083	0	Moveable Incore Detector Drive Preoperational Test
2-1240084	0	Digital Data Processor Controlled Moveable Incore Detector Drive System Functional Test
2-1240086	0	Qualified Safety Parameter Display System Functional Test
2-1300080	0	Integrated Leak Rate Test (ILRT)
2-1300082	0	Local Leak Rate Test
2-1300084	0	Shield Building Leak Rate Test
2-1400080	1	Reactor Protection System Preop Test
2-1400082	1	Reactor Regulating System Preoperational and Functional Test
2-1400084	1	Automatic Control Systems Checkout Steam Generator Level Control CEA Regulating System, Automatic Turbine Control and Load Swing (ESEC) Test
2-1400085	0	Digital Electro-Hydraulic Controller (DEHC) Checkout
2-1400086	0	Sequence of Events Recorder (SER) Preoperational Function Test

ST. LUCIE UNIT 2
PREOPERATIONAL TEST PROCEDURES INDEX

<u>PROCEDURE #</u>	<u>REV.</u>	<u>TITLE</u>
2-1400088	2	Engineered Safeguards Panel Test
2-1400090	1	Digital Data Processor Inst. Correlation Test
2-1400093	0	Reactor Trip With Shutdown Outside The Control Room
2-1400162	0	Reactor Protection and Engineered Safeguards Systems Response Time Testing
2-1400162A	0	Reactor Protection System - RTD Time Response Test
2-1530080	1	Preoperational Test of the Domestic Water System
2-1560080	1	Preoperational Test of the Primary Water System
2-1560081	0	Initial Run of Primary Water Pumps
2-1560082	2	Demineralized Water System Preoperational Test
2-1560083	0	Primary Water System Vacuum Deaerator Preoperational Test
2-1600021	2	Unit 2 Initial Core Loading
2-1600080	0	Fuel Handling Building Vent System
2-1630080	1	Refueling Machine Indexing
2-1630081	1	Refueling Machine Preop Test
2-1630082	0	CEA Change Fixture Preoperational Test
2-1630083	0	Preop Test of the Spent Fuel Handling Machine
2-1630085	0	Preoperational Test of the Spent Fuel Handling Machine

ST. LUCIE UNIT 2
PREOPERATIONAL TEST PROCEDURES INDEX

<u>PROCEDURE #</u>	<u>REV.</u>	<u>TITLE</u>
2-1630086	0	New Fuel Elevator
2-1630087	0	Test of the New Fuel Handling Crane and Storage Racks
2-1710080	3	Primary Sample Initial Operation
2-1720080	1	Gas Analyzer Sampling System Functional Test
2-1730080	0	Secondary Sampling System Preoperational Test
2-1740080	1	Post Accident Sampling System (PASS) Functional Test
2-1800080	1	Fire Water System Test
2-1800080A	0	Fire Water System Test of Dry Storage Warehouse
2-1800081	1	Fire Detection System Preoperational and Functional Test
2-1900080	0	Auxiliary Building Ventilation System Functional Test
2-1900081	1	Control Room Ventilation System Initial Start-up and Functional Test
2-1900082	0	RAB Miscellaneous Ventilation Systems
2-1900083	0	Control Room Leak Rate Test
2-1900084	0	HVAC Systems Temperature Capability Survey At 50% Power, 100% Power & Shutdown Cooling
2-2000080	0	Containment Purge & Vacuum Relief Systems Preop Test HVAC System Temp. Capability Survey at 50% Power; 100% Power & Shutdown Cooling
2-2000081	0	Containment Ventilation System Functional Test
2-2000082	0	Shield Building Ventilation System (SBVS) Functional Test

NOV 17 1983

Page 13 of 15
November 1983ST. LUCIE UNIT 2
PREOPERATIONAL TEST PROCEDURES INDEX

<u>PROCEDURE #</u>	<u>REV.</u>	<u>TITLE</u>
2-2000083	0	Hydrogen Recombiner Functional Test
2-2000084	0	Continuous Containment/Hydrogen Purge System Functional Test
2-2000085	1	Initial Fan Operation and HVAC Balancing
2-2000086	0	Reactor Vessel Ventilation System Functional Test
2-2000088	0	Containment Hydrogen Sampling System Functional Test
2-2000089	0	In-Place Testing of HEPA Filters, Charcoal Adsorbers, Frames and Racks
2-2000090	0	Auxiliary Building Leak Test
2-2100080	0	Turbine Control Initial Test
2-2100081	1	St. Lucie Unit 2 Generator Gas Tightness Test
2-2100082	2	NSSS and Turbine Generator Acceptance Run
2-2100083	0	Preoperational Test of the Turbine Lube Oil Purification System
2-2100084	1	Turbine Gland Steam Sealing System
2-2100085	0	Turbine Lube Oil Flush
2-2100086	1	Initial Turbine Roll
2-2100087	1	Turbine Overspeed Trip Test
2-2100088	0	Electro-Hydraulic (Control Oil System)
2-2100089	0	Generator Trip at 100% Power

NOV 17 1983

Page 14 of 15
November 1983ST. LUCIE UNIT 2
PREOPERATIONAL TEST PROCEDURES INDEX

<u>PROCEDURE #</u>	<u>REV.</u>	<u>TITLE</u>
2-2100091	0	Loss of Off-Site Power
2-2200080	0	2A Diesel Gen. and Auxiliary Systems Preoperational Test
2-2200081	0	Automatic Starting and Sequencing of 2A Diesel Generator for Cold Hydro
2-2200082	1	Initial Operation of the 2A Diesel Generator Air Start System
2-2200083	0	2B Diesel Generator and Auxiliary System Preoperational Test
2-2200084	0	Automatic Starting and Sequencing of 2B
2-2200085	1	Initial Operation of the 2B Diesel Generator Air Start System
2-2200086	1	Diesel Oil Transfer System Functional Test
2-2200087	0	No. 1A Diesel Generator Supply Power for the Safety Related Loads on No. 2 Units 4.16KV Bus 2A-3 - No. 2A Diesel Generator Supply Power for the Safety Related Loads on No. 1 Units 4.16KV Bus 1A-3
2-2200088	1	No. 1 Diesel Generator Supplying Power for the Safety Related Loads on No. 2 Units 4.16KV Bus 2B-3 - No. 2B Diesel Generator Supply Power for the Safety Related Loads on No. 1 Units 4.16KV Bus 1B3
2-3200089	0	RCS Delta T Power Determination
2-3300081	1	Radiation Shielding Evaluation
2-3400081	0	Chemical and Radio Chemical Analysis 200°F, 532°F, Startup Mode, 20, 50, 80 & 100% Power
2-3400083	0	Hot Functional Chemistry Control
2-3400085	0	Preoperational Test of the Polar Crane

ST. LUCIE UNIT 2
PREOPERATIONAL TEST PROCEDURES INDEX

NOV 17 1983

<u>URE #</u>	<u>REV.</u>	<u>TITLE</u>
-3400086A	1	Security System Microwave Preoperational and Functional Test
* 2-3400086B	0	Security System Preoperational and Functional Test
* 2-3400086C	0	Security System Fixed CCTV Preoperational and Functional Test
* 2-3400086F	0	Security System Alarmed Doors Preoperational and Functional Test
* 2-3400086G	0	Security System Supervised Device Input Preoperational and Functional Test
* 2-3400086H	0	Security System Integrated Perimeter Preoperational Test
2-3400088	0	Preoperational Test of Miscellaneous Lifting Equipment

* Need to stamp SAFEGUARDS. Also send out in double envelope.