

TEXAS UTILITIES GENERATING COMPANY

2001 BRYAN TOWER - DALLAS, TEXAS 75201

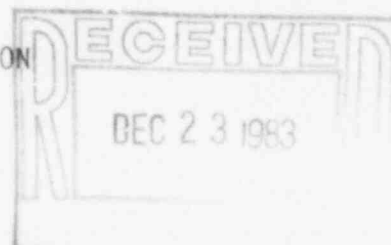
R. J. GARY
EXECUTIVE VICE PRESIDENT
AND GENERAL MANAGER

December 22, 1983
TXX-4089

Mr. John T. Collins
Regional Administrator, IV
U.S. Nuclear Regulatory Commission
611 Ryan Plaza Drive, Suite 1000
Arlington, TX 76011

Docket No.: 50-445
50-446

COMANCHE PEAK STEAM ELECTRIC STATION
SUBMITTAL OF FSAR AMENDMENT
QA FILE: AMENDMENT 44
FILE: 10010



Dear Mr. Collins:

In accordance with 10CFR50.55, we have enclosed for your review the revised pages from Chapter 17.1 of our Final Safety Analysis Report (FSAR) which reflects a change from the previously accepted description of our Quality Assurance program. The change is identified as Amendment 44 in the attached text.

The revised program continues to satisfy the criteria of 10CFR50, Appendix B and the description previously accepted by the NRC. Amendment 44 reflects organizational changes within TUGCo/TUSI and Gibbs and Hill. Amendment 44 does not reduce our commitments nor the effectiveness of our QA program.

Very truly yours,

A handwritten signature in dark ink, appearing to read "R. J. Gary". The signature is fluid and cursive, with a large, stylized "G" at the end.

RJG/brd

Enclosure

cc: Mr. R.G. Taylor
U.S. Nuclear Regulatory Commission
Senior Resident Reactor Inspector - Construction
P.O. Box 2300
Glen Rose, TX 76043

Document Control Desk
U.S. Nuclear Regulatory Commission
Washington, DC 20555

8401030205 831222
PDR ADOCK 05000445
A PDR

111
IE-27

bcc: R.J. Gary (2)
B.R. Clements
D.N. Chapman
A. Vega
S.L. Spencer
H.C. Schmidt

9 | 5. Registered Professional Engineer.

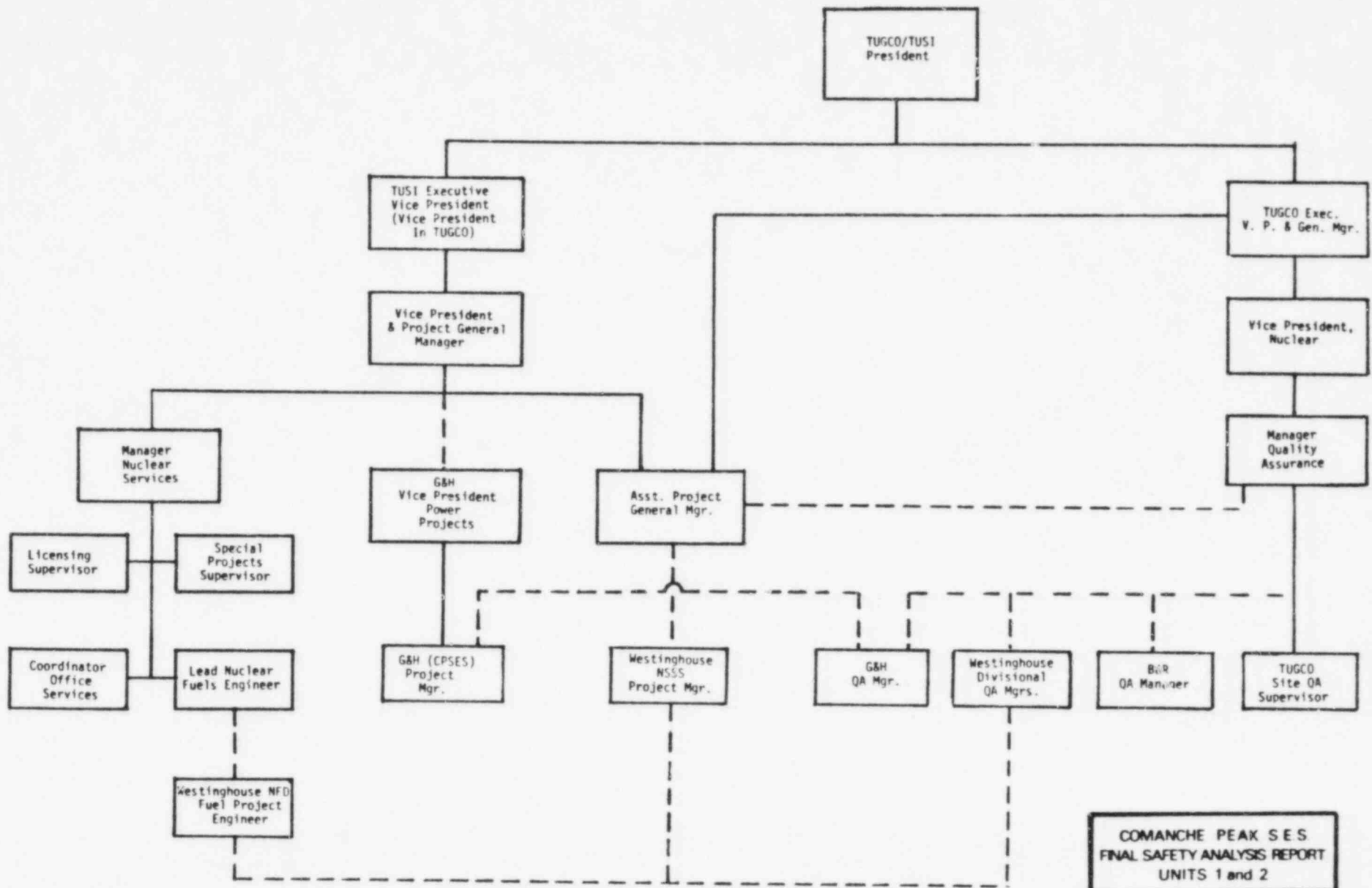
37 | 17.1.1.1.2 Project Management

44 | For the CPSES project, the Vice President and Project General Manager &
 Assistant Project General Manager coordinates and controls the design
 engineering, procurement, and construction activities. These
 activities are normally delegated to Gibbs & Hill, Inc., Westinghouse
 37 | and other contractors/vendors. However, TUSI retains overall
 responsibility for these activities and performs design functions as
 necessary. He retains responsibility for cost and schedule and is
 charged with insuring that quality requirements are met during design
 and construction. The Vice President and Project General Manager &
 44 | Assistant Project General Manager report to the Executive
 Vice-President of TUSI.

17.1.1.2 Gibbs & Hill

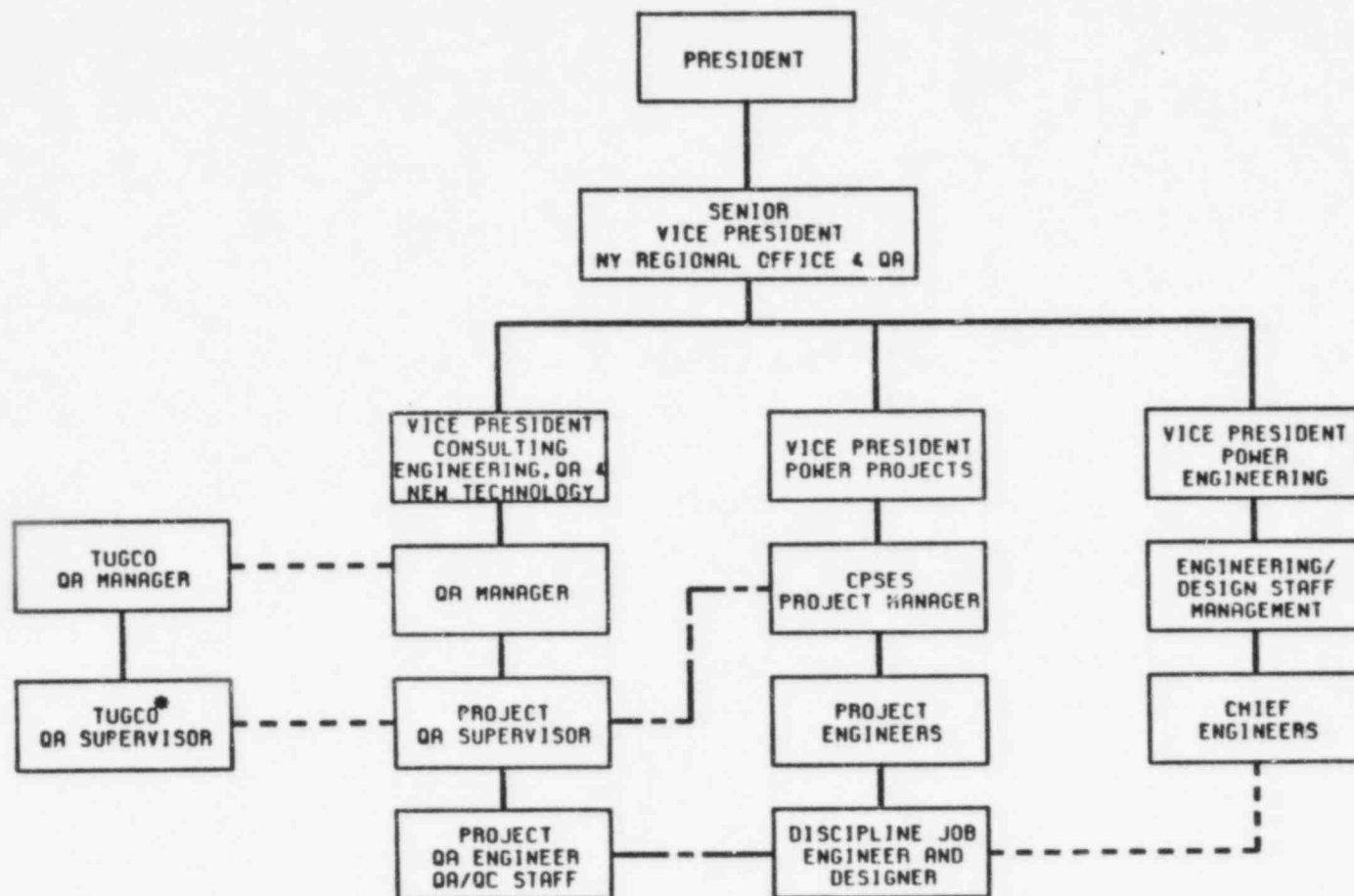
Gibbs & Hill (G&H) has developed an integrated project organization to effectively design nuclear power stations. A Project Manager has been appointed to direct and guide the engineering, design, and procurement functions and to establish and maintain project relations with Texas Utilities Services Inc. (TUSI). The Project Manager is responsible for channeling conceptual designs and engineering parameters compatible with project requirements and for ensuring that the established Quality Control procedures are enforced so that the quality level required for the project is maintained. The Project Manager functions in accordance with the duties detailed in G&H's Project Procedures Manual.

25 | The Project Manager, has the authority to "Stop Work" on engineering and design activities performed by Gibbs & Hill as well as authority to advise the Client to reject delivery of non-conforming structures, systems, or components as identified by QA/QC or others.



AMENDMENT 44
OCTOBER 10, 1983

COMANCHE PEAK S.E.S. FINAL SAFETY ANALYSIS REPORT UNITS 1 and 2
PROJECT Q.A. ORGANIZATION
FIGURE 17.1-2



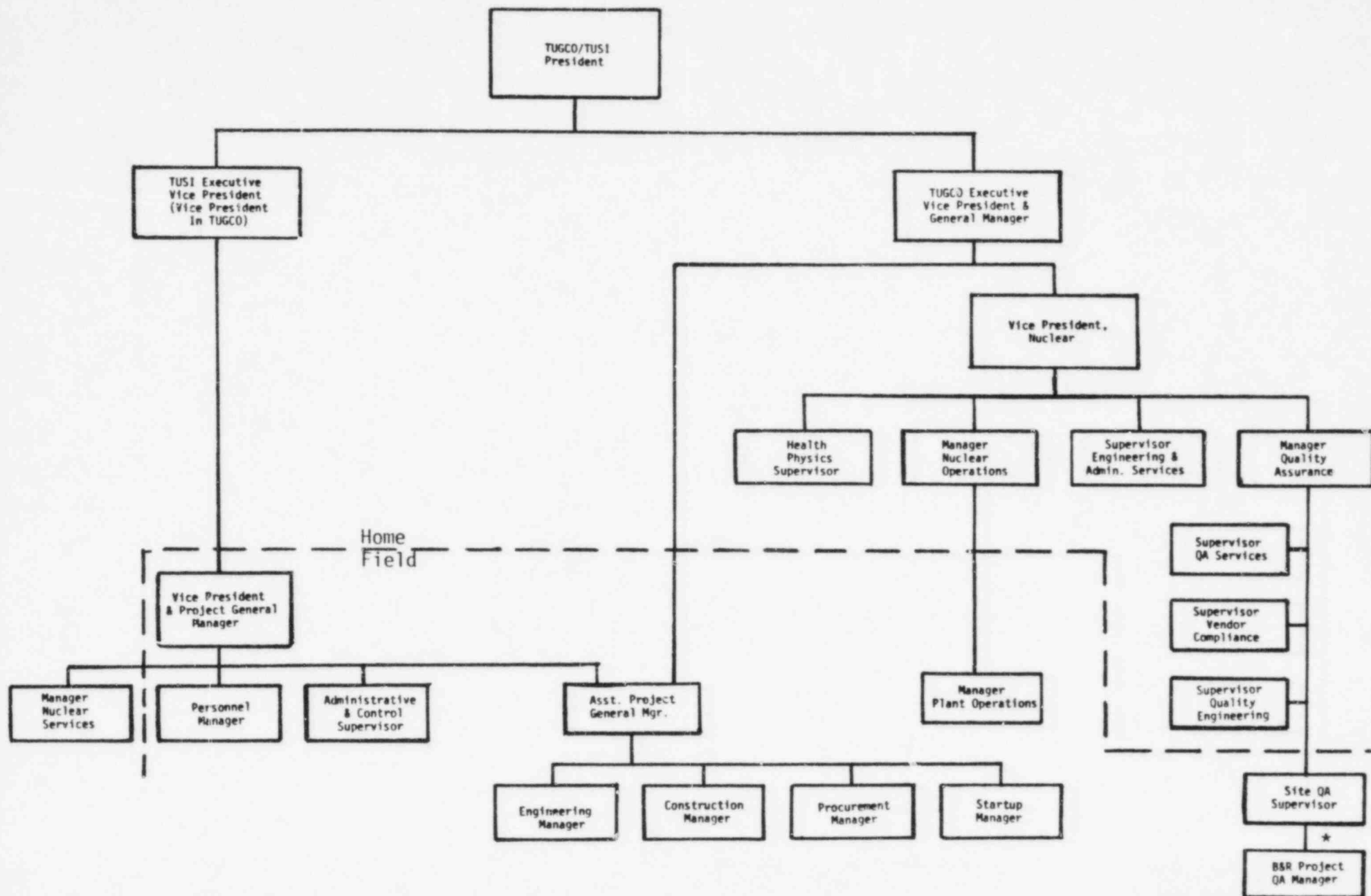
AMENDMENT 44
OCTOBER 10, 1983

COMANCHE PEAK S.E.S.
FINAL SAFETY ANALYSIS REPORT
UNITS 1 and 2

GIBBS & HILL, INC.
QA ORGANIZATION

FIGURE 17.1-3

———— AUTHORITY
----- COORDINATING
- . - . QA AUDITING
* LOCATED AT CPSES



*For other than ASME Section III Division I activity only

AMENDMENT 44
OCTOBER 10, 1983

COMANCHE PEAK SES
FINAL SAFETY ANALYSIS REPORT
UNITS 1 and 2
TUGCO/TUSI HOME OFFICE
AND CPSES FIELD ORGANIZATION
FIGURE 17.1-6