

## LICENSEE EVENT REPORT

EXHIBIT A

CONTROL BLOCK: 1 (PLEASE PRINT OR TYPE ALL REQUIRED INFORMATION)

01 FL CR P 3 2 0 0 0 - 0 0 0 0 0 0 - 0 1 0 3 4 1 1 1 1 1 4 5  
7 8 9 10 11 12 13 14 15 16 17 18 19 20 21 22 23 24 25 26 27 28 29 30 31 32 33 34 35 36 37 38 39 40 41 42 43 44 45 46 47 48 49 50 51 52 53 54 55 56 57 58 59 60 61 62 63 64 65 66 67 68 69 70 71 72 73 74 75 76 77 78 79 80

CON'T  
01 REPORT SOURCE L 6 0 5 0 1 - 0 3 0 2 7 1 1 0 7 8 3 8 1 2 1 2 8 3 9  
7 8 9 10 11 12 13 14 15 16 17 18 19 20 21 22 23 24 25 26 27 28 29 30 31 32 33 34 35 36 37 38 39 40 41 42 43 44 45 46 47 48 49 50 51 52 53 54 55 56 57 58 59 60 61 62 63 64 65 66 67 68 69 70 71 72 73 74 75 76 77 78 79 80

EVENT DESCRIPTION AND PROBABLE CONSEQUENCES (10)  
02 On November 7, 1983, at 0650, while verifying emergency diesel generator  
03 operability, emergency diesel generator "B" (EDG-B) tripped after approxi-  
04 mately 10 minutes of operation. EDG-B was declared inoperable (T.S.3.8.1.1)  
05 and maintenance was initiated. EDG-A was started to verify its operability.  
06 EDG-B was returned to service at 0605 on November 8, 1983. This is the  
07 first occurrence of this type of failure and the thirty-fourth report  
08 under this Specification.  
7 8 9 10 11 12 13 14 15 16 17 18 19 20 21 22 23 24 25 26 27 28 29 30 31 32 33 34 35 36 37 38 39 40 41 42 43 44 45 46 47 48 49 50 51 52 53 54 55 56 57 58 59 60 61 62 63 64 65 66 67 68 69 70 71 72 73 74 75 76 77 78 79 80

09 SYSTEM CODE E E 11 CAUSE CODE X 12 CAUSE SUBCODE Z 13 COMPONENT CODE E N G I N E 14 COMP SUBCODE Z 15 VALVE SUBCODE Z 16  
7 8 9 10 11 12 13 14 15 16 17 18 19 20 21 22 23 24 25 26 27 28 29 30 31 32 33 34 35 36 37 38 39 40 41 42 43 44 45 46 47 48 49 50 51 52 53 54 55 56 57 58 59 60 61 62 63 64 65 66 67 68 69 70 71 72 73 74 75 76 77 78 79 80

17 LER/RO REPORT NUMBER 8 3 21 22 23 24 25 26 27 28 29 30 31 32 33 34 35 36 37 38 39 40 41 42 43 44 45 46 47 48 49 50 51 52 53 54 55 56 57 58 59 60 61 62 63 64 65 66 67 68 69 70 71 72 73 74 75 76 77 78 79 80

ACTION TAKEN 18 A 19 Z 20 Z 21 Z 22 0 0 0 23 24 25 26 27 28 29 30 31 32 33 34 35 36 37 38 39 40 41 42 43 44 45 46 47 48 49 50 51 52 53 54 55 56 57 58 59 60 61 62 63 64 65 66 67 68 69 70 71 72 73 74 75 76 77 78 79 80

CAUSE DESCRIPTION AND CORRECTIVE ACTIONS (27)  
10 EDG-B was inoperable due to worn insulation on a section of wire leading to  
11 a selector switch. This resulted in loss of control power on EDG-B. The  
12 wiring was replaced and EDG-B was operable at 0605 on November 8, 1983.  
13 All connections and fittings were verified tight. No other degraded wiring  
14 was found.  
7 8 9 10 11 12 13 14 15 16 17 18 19 20 21 22 23 24 25 26 27 28 29 30 31 32 33 34 35 36 37 38 39 40 41 42 43 44 45 46 47 48 49 50 51 52 53 54 55 56 57 58 59 60 61 62 63 64 65 66 67 68 69 70 71 72 73 74 75 76 77 78 79 80

15 FACILITY STATUS E 28 0 9 8 29 30 N/A 31 Operator Observation 32  
7 8 9 10 11 12 13 14 15 16 17 18 19 20 21 22 23 24 25 26 27 28 29 30 31 32 33 34 35 36 37 38 39 40 41 42 43 44 45 46 47 48 49 50 51 52 53 54 55 56 57 58 59 60 61 62 63 64 65 66 67 68 69 70 71 72 73 74 75 76 77 78 79 80

16 ACTIVITY RELEASED 33 Z 34 Z 35 N/A 36 N/A 37 N/A 38 N/A 39 N/A 40 N/A 41 N/A 42 N/A 43 N/A 44 N/A 45 N/A 46 N/A 47 N/A 48 N/A 49 N/A 50 N/A 51 N/A 52 N/A 53 N/A 54 N/A 55 N/A 56 N/A 57 N/A 58 N/A 59 N/A 60 N/A 61 N/A 62 N/A 63 N/A 64 N/A 65 N/A 66 N/A 67 N/A 68 N/A 69 N/A 70 N/A 71 N/A 72 N/A 73 N/A 74 N/A 75 N/A 76 N/A 77 N/A 78 N/A 79 N/A 80 N/A

17 PERSONNEL EXPOSURES NUMBER 0 0 0 11 12 13 N/A 14 N/A 15 N/A 16 N/A 17 N/A 18 N/A 19 N/A 20 N/A 21 N/A 22 N/A 23 N/A 24 N/A 25 N/A 26 N/A 27 N/A 28 N/A 29 N/A 30 N/A 31 N/A 32 N/A 33 N/A 34 N/A 35 N/A 36 N/A 37 N/A 38 N/A 39 N/A 40 N/A 41 N/A 42 N/A 43 N/A 44 N/A 45 N/A 46 N/A 47 N/A 48 N/A 49 N/A 50 N/A 51 N/A 52 N/A 53 N/A 54 N/A 55 N/A 56 N/A 57 N/A 58 N/A 59 N/A 60 N/A 61 N/A 62 N/A 63 N/A 64 N/A 65 N/A 66 N/A 67 N/A 68 N/A 69 N/A 70 N/A 71 N/A 72 N/A 73 N/A 74 N/A 75 N/A 76 N/A 77 N/A 78 N/A 79 N/A 80 N/A

18 PERSONNEL INJURIES NUMBER 0 0 0 11 12 13 N/A 14 N/A 15 N/A 16 N/A 17 N/A 18 N/A 19 N/A 20 N/A 21 N/A 22 N/A 23 N/A 24 N/A 25 N/A 26 N/A 27 N/A 28 N/A 29 N/A 30 N/A 31 N/A 32 N/A 33 N/A 34 N/A 35 N/A 36 N/A 37 N/A 38 N/A 39 N/A 40 N/A 41 N/A 42 N/A 43 N/A 44 N/A 45 N/A 46 N/A 47 N/A 48 N/A 49 N/A 50 N/A 51 N/A 52 N/A 53 N/A 54 N/A 55 N/A 56 N/A 57 N/A 58 N/A 59 N/A 60 N/A 61 N/A 62 N/A 63 N/A 64 N/A 65 N/A 66 N/A 67 N/A 68 N/A 69 N/A 70 N/A 71 N/A 72 N/A 73 N/A 74 N/A 75 N/A 76 N/A 77 N/A 78 N/A 79 N/A 80 N/A

19 LOSS OF OR DAMAGE TO FACILITY TYPE Z 42 N/A 43 N/A 44 N/A 45 N/A 46 N/A 47 N/A 48 N/A 49 N/A 50 N/A 51 N/A 52 N/A 53 N/A 54 N/A 55 N/A 56 N/A 57 N/A 58 N/A 59 N/A 60 N/A 61 N/A 62 N/A 63 N/A 64 N/A 65 N/A 66 N/A 67 N/A 68 N/A 69 N/A 70 N/A 71 N/A 72 N/A 73 N/A 74 N/A 75 N/A 76 N/A 77 N/A 78 N/A 79 N/A 80 N/A

20 PUBLICITY ISSUED N 44 N/A 45 N/A 46 N/A 47 N/A 48 N/A 49 N/A 50 N/A 51 N/A 52 N/A 53 N/A 54 N/A 55 N/A 56 N/A 57 N/A 58 N/A 59 N/A 60 N/A 61 N/A 62 N/A 63 N/A 64 N/A 65 N/A 66 N/A 67 N/A 68 N/A 69 N/A 70 N/A 71 N/A 72 N/A 73 N/A 74 N/A 75 N/A 76 N/A 77 N/A 78 N/A 79 N/A 80 N/A

NAME OF PREPARER J.L. Bufe  
PHONE (904) 795-3802

## SUPPLEMENTARY INFORMATION

REPORT NO.: 50-302/83-051/03L-0

FACILITY: Crystal River Unit 3

REPORT DATE: December 12, 1983

DATE OF OCCURRENCE: November 7, 1983

### IDENTIFICATION OF OCCURRENCE:

Diesel Generator "B" (EDG-B) was inoperable, reportable under Technical Specification 3.8.1.1.

### CONDITIONS PRIOR TO OCCURRENCE:

Mode 1, 98% FP

### DESCRIPTION OF OCCURRENCE:

On November 7, 1983, EDG-A was scheduled for maintenance, therefore, personnel attempted to verify operability of EDG-B prior to removing EDG-A from service. After loading EDG-B for approximately ten (10) minutes at 2,000 KW, the output breaker tripped. Thus, at 0650, EDG-B was declared inoperable. On November 8, 1982, at 0605, EDG-B was returned to operability.

### ANALYSIS OF OCCURRENCE:

EDG-A was available and operable if a loss of off-site power had occurred.

### DESIGNATION OF APPARENT CAUSE:

This failure was caused by worn insulation on a piece of wire leading to a selector switch, which resulted in a blown fuse. The blown fuse caused a loss of control power on EDG-B.

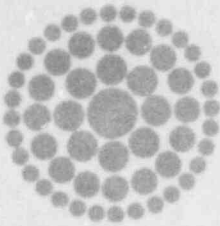
The insulation on the wire became worn after a back-shell type nut vibrated loose and came in contact with the wire. The friction between the nut and the wire caused the insulation on a section of the wire to become worn.

### CORRECTIVE ACTION:

The segment of wire was replaced on EDG-B. All similar electrical connections were verified tight.

### FAILURE DATA:

This is the first failure of this type for EDG-B and the thirty-fourth report under Technical Specification 3.8.1.1.



USNR PSMN II  
ATLANTA, GEORGIA

03 DEC 14 All: 19

**Florida  
Power**  
CORPORATION

December 12, 1983  
3F1283-16

Mr. James P. O'Reilly  
Regional Administrator, Region II  
Office of Inspection & Enforcement  
U.S. Nuclear Regulatory Commission  
101 Marietta Street N.W., Suite 2900  
Atlanta, GA 30303

Subject: Crystal River Unit 3  
Docket No. 50-302  
Operating License No. DPR-72  
Licensee Event Report No. 83-051

Dear Mr. O'Reilly:

Enclosed is Licensee Event Report No. 83-051 and the attached supplementary information sheet, which are submitted in accordance with Technical Specification 6.9.1.9(b).

Should there be any questions, please contact this office.

Sincerely,

G.R. Westafer  
Manager  
Nuclear Operations Licensing and Fuel Management

AEF:jcf

Enclosure

cc: Document Control Desk  
U.S. Nuclear Regulatory Commission  
Washington, DC 20555

OFFICIAL COPY

1222

11