

AVERAGE DAILY UNIT POWER LEVEL

DOCKET NO. 50-302

UNIT FLCRP-3

DATE 12/2/83

COMPLETED BY D. Graham

TELEPHONE (904) 795-3802

MONTH November 1983

DAY AVERAGE DAILY POWER LEVEL
(MWe-Net)

1	<u>836</u>
2	<u>847</u>
3	<u>848</u>
4	<u>849</u>
5	<u>842</u>
6	<u>858</u>
7	<u>836</u>
8	<u>847</u>
9	<u>684</u>
10	<u>600</u>
11	<u>779</u>
12	<u>472</u>
13	<u>712</u>
14	<u>830</u>
15	<u>838</u>
16	<u>845</u>

DAY AVERAGE DAILY POWER LEVEL
(MWe-Net)

17	<u>808</u>
18	<u>809</u>
19	<u>569</u>
20	<u>330</u>
21	<u>636</u>
22	<u>791</u>
23	<u>836</u>
24	<u>852</u>
25	<u>864</u>
26	<u>852</u>
27	<u>850</u>
28	<u>854</u>
29	<u>859</u>
30	<u>858</u>
31	<u>---</u>

INSTRUCTIONS

On this format, list the average daily unit power level in MWe-Net for each day in the reporting month. Compute to the nearest whole megawatt.

(9/77)

8312120150 831202
PDR ADDOCK 05000302
R PDR

IE24
11

OPERATING DATA REPORT

DOCKET NO. 50-302
 DATE 12/2/83
 COMPLETED BY D. Graham
 TELEPHONE (904) 795-3802

OPERATING STATUS

1. Unit Name: Crystal River Unit 3
2. Reporting Period: 11/1/83 - 11/30/83
3. Licensed Thermal Power (MWt): 2544
4. Nameplate Rating (Gross MWe): 890
5. Design Electrical Rating (Net MWe): 825
6. Maximum Dependable Capacity (Gross MWe): 850
7. Maximum Dependable Capacity (Net MWe): 811
8. If Changes Occur in Capacity Ratings (Items Number 3 Through 7) Since Last Report, Give Reasons:
N/A

Notes

9. Power Level To Which Restricted, If Any (Net MWe): N/A
10. Reasons For Restrictions, If Any: N/A

	This Month	Yr.-to-Date	Cumulative
11. Hours In Reporting Period	<u>720</u>	<u>8016</u>	<u>58896</u>
12. Number Of Hours Reactor Was Critical	<u>707.7</u>	<u>4618</u>	<u>36825.2</u>
13. Reactor Reserve Shutdown Hours	<u>0</u>	<u>0</u>	<u>1280.3</u>
14. Hours Generator On-Line	<u>699.6</u>	<u>4418.9</u>	<u>35885.8</u>
15. Unit Reserve Shutdown Hours	<u>0</u>	<u>0</u>	<u>0</u>
16. Gross Thermal Energy Generated (MWH)	<u>1665712</u>	<u>9671107</u>	<u>80196062</u>
17. Gross Electrical Energy Generated (MWH)	<u>585678</u>	<u>3341436</u>	<u>27308053</u>
18. Net Electrical Energy Generated (MWH)	<u>558720</u>	<u>3182028</u>	<u>25926908</u>
19. Unit Service Factor	<u>97.2%</u>	<u>55.1%</u>	<u>60.9%</u>
20. Unit Availability Factor	<u>97.2%</u>	<u>55.1%</u>	<u>60.9%</u>
21. Unit Capacity Factor (Using MDC Net)	<u>95.7%</u>	<u>48.9%</u>	<u>55.8%</u>
22. Unit Capacity Factor (Using DER Net)	<u>94.1%</u>	<u>48.1%</u>	<u>53.4%</u>
23. Unit Forced Outage Rate	<u>2.8%</u>	<u>4.0%</u>	<u>23.9%</u>

24. Shutdowns Scheduled Over Next 6 Months (Type, Date, and Duration of Each):

None

25. If Shut Down At End Of Report Period, Estimated Date of Startup: N/A

26. Units In Test Status (Prior to Commercial Operation):

Forecast

Achieved

INITIAL CRITICALITY
 INITIAL ELECTRICITY
 COMMERCIAL OPERATION

1/14/77
1/30/77
3/13/77

UNIT SHUTDOWNS AND POWER REDUCTIONS

DOCKET NO. 50-302UNIT NAME FLCRP-3DATE 12/2/83COMPLETED BY D. FieldsTELEPHONE (904) 795-3802REPORT MONTH 11/83

No.	Date	Type ¹	Duration (Hours)	Reason ²	Method of Shutting Down Reactor ³	Licensee Event Report #	System Code ⁴	Component Code ⁵	Cause & Corrective Action to Prevent Recurrence
83-30	831109	F	16	A	N/A	N/A	HC	HTEXCH	Reduced power to locate leak in condenser.
83-31	831112	F	11.1	A	3	N/A	CH	PUMPXX	Failure of feedwater pump control system resulted in scram on RCS High Pressure.
83-32	831118	F	83	B	N/A	N/A	HC	HTEXCH	Reduced power to clean condenser tubes.
83-33	831119	F	9.3	B	1	N/A	CB	MOTORX	Shutdown to add oil to A RCP motor.

¹
F: Forced
S: Scheduled

²
Reason:
A-Equipment Failure (Explain)
B-Maintenance or Test
C-Refueling
D-Regulatory Restriction
E-Operator Training & License Examination
F-Administrative
G-Operational Error (Explain)
H-Other (Explain)

³
Method:
1-Manual
2-Manual Scram.
3-Automatic Scram.
4-Other (Explain)

⁴
Exhibit G - Instructions
for Preparation of Data
Entry Sheets for Licensee
Event Report (LER) File (NUREG-
0161)

⁵
Exhibit I - Same Source

MONTHLY OPERATIONAL SUMMARY STATEMENT

DOCKET NO. 50-302

UNIT FLCRP-3

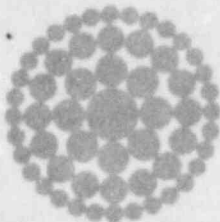
DATE 12/2/83

COMPLETED BY D. Fields

TELEPHONE (904) 795-3802

MONTH November 1983

SUMMARY STATEMENT: The unit operated at full capacity for the entire month with only minor problems. One scram due to loss of a feed pump occurred and one shutdown was required to add oil to the 'A' reactor coolant pump.



**Florida
Power**
CORPORATION

December 7, 1983
3F1283-11

Mr. Richard C. DeYoung, Director
Office of Inspection and Enforcement
U.S. Nuclear Regulatory Commission
Attn.: Document Control Desk
Washington, DC 20555

Subject: Crystal River Unit 3
Docket No. 50-302
Operating License No. DPR-72
Monthly Operating Report

Dear Mr. DeYoung:

Attached are twelve (12) copies of the Crystal River Unit 3 November 1983 Monthly Operating Report. This report is submitted in accordance with Technical Specification 6.9.1.6.

Sincerely,

E.C. Simpson
Director
Nuclear Operations Engineering and Licensing

AEF:jcf

Attachments

cc: Mr. J.P. O'Reilly
Regional Administrator, Region II
Office of Inspection & Enforcement
U.S. Nuclear Regulatory Commission
101 Marietta Street N.W., Suite 2900
Atlanta, GA 30303

IE24
1/1