

**Florida
Power**
CORPORATION

December 2, 1983
3F1283-03

Director of Nuclear Reactor Regulation
Attention: Mr. John F. Stolz, Chief
Operating Reactors Branch #4
Division of Licensing
U. S. Nuclear Regulatory Commission
Washington, D. C. 20555

Subject: Crystal River Unit 3
Docket No. 50-302
Operating License No. DPR-72
Inservice Inspection

Dear Sir:

By letter of July 13, 1983, you requested information regarding ASME Section XI Code Class 2 pipe welds in residual heat removal systems, emergency core cooling systems, and containment heat removal systems, which were not examined volumetrically in the 1983 refueling outage. A listing of the subject welds is provided as Attachment A.

All of these welds were examined by dye penetrant method between March 29 and May 25, 1983, and no recordable indications were found. All welds are in piping of 0.40 inch wall thickness or less, and the absence of recordable surface indications provides a high degree of assurance of the integrity of these welds.

It is planned that volumetric examinations for welds located in the auxiliary building (21 examinations) will be accomplished prior to the restart following the Refueling V outage scheduled for Spring 1985. It is our intent to perform the examination of these 21 welds during the twenty months prior to the refueling outage; however, flexibility in scheduling is required to assure examination personnel availability and satisfaction of ALARA considerations. It is planned that examination of the single weld inside the reactor containment building will be accomplished during the Spring 1985 outage.

8312060140 831202
PDR ADOCK 05000302
G PDR

A047
1/1

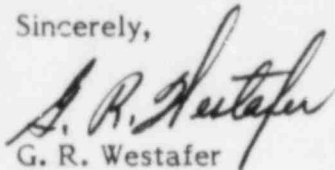
December 2, 1983

3F1283-03

Page 2

It is anticipated that a request for relief from certain other code requirements will be submitted during the first quarter of 1984. This request will define the proposed inspection program features which will be applied to completion of our first 10 year inspection interval.

Sincerely,



G. R. Westafer

Manager

Nuclear Operations Licensing and Fuel Management

SCP/mlg

Attachment

cc: Director of Nuclear Reactor Regulation
U. S. Nuclear Regulatory Commission
Attn: Document Control Desk
Washington, D. C. 20555 (2 copies)

ATTACHMENT A

Class 2 pipe welds with pipe wall thickness less than 0.5 inch in residual heat removal, emergency core cooling, or containment heat removal systems scheduled for volumetric examination during 1983 refueling outage, but subjected to surface examination.

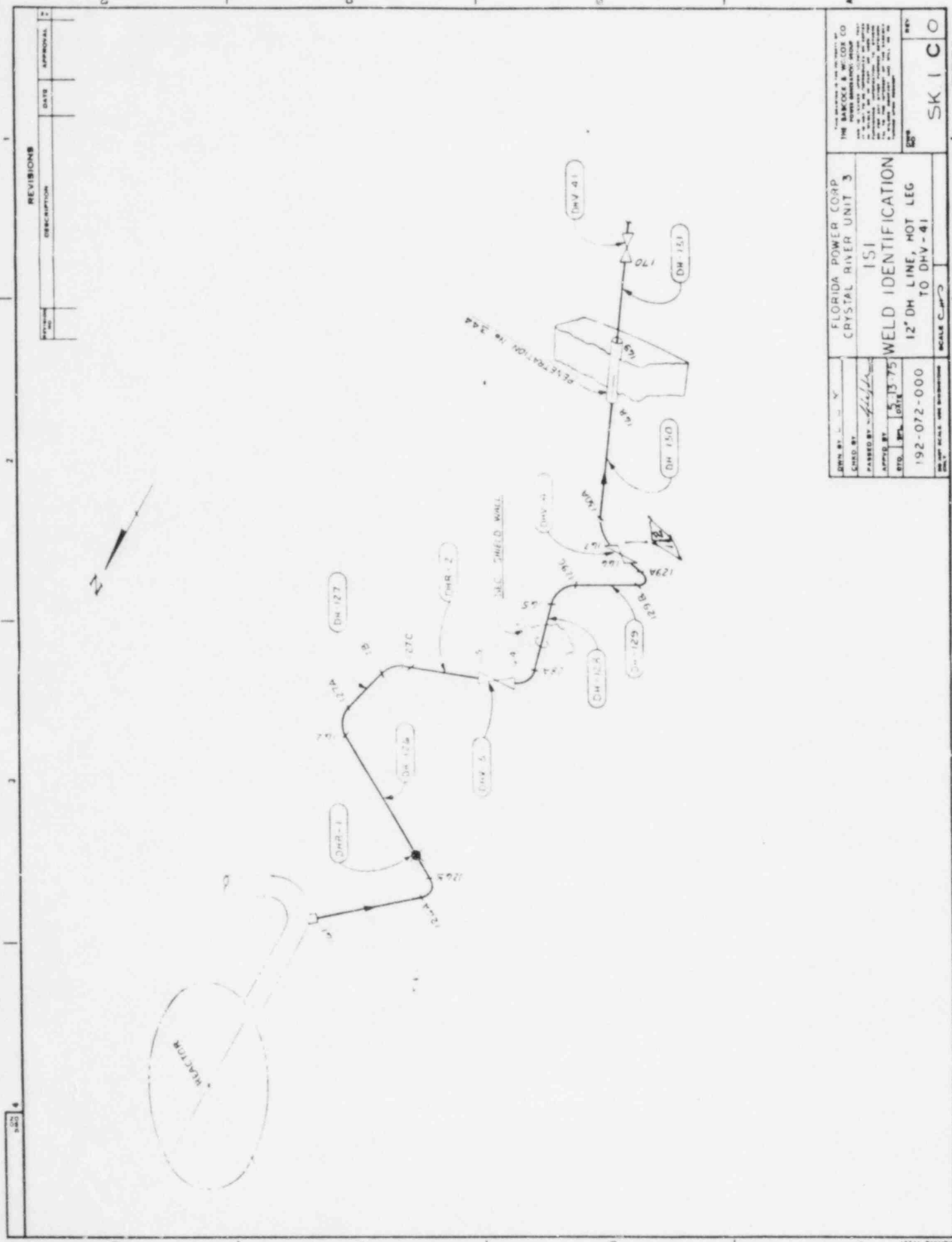
Decay Heat Removal System

| <u>Examination Number</u> | <u>Weld Number</u> | <u>Sketch* Number</u> |
|---------------------------|--------------------|-----------------------|
| C2.1.31 | DH-130A | SK-1C |
| C2.1.34 | DH-85 | SK-111C |
| C2.1.37 | DH-61C | SK-111C |
| C2.1.40 | DH-45 | SK-111C |
| C2.1.43 | DH-49 | SK-109C |
| C2.1.46 | DH-23 | SK-109C |
| C2.1.49 | DH-37 | SK-109C |
| C2.2.6 | DH-37 | SK-109C |
| C2.2.9 | DH-24 | SK-109C |
| C2.1.52 | DH-74 | SK-110C |
| C2.1.55 | DH-43C | SK-110C |
| C2.2.12 | DH-40 | SK-110C |
| C2.2.15 | DH-41 | SK-110C |
| C2.1.58 | DH-98B | SK-112C |
| C2.1.61 | DH-103A | SK-112C |
| C2.1.63 | DH-100 | SK-114C |
| C2.1.73 | DH-67B | SK-114C |
| C2.1.67 | DH-141 | SK-113C |
| C2.1.69 | DH-110A | SK-113C |

Make-up System

| | | |
|---------|-------|---------|
| C2.1.80 | MU-62 | SK-115C |
| C2.1.81 | MU-64 | SK-115C |
| C2.1.85 | MU-42 | SK-116C |

* Attached

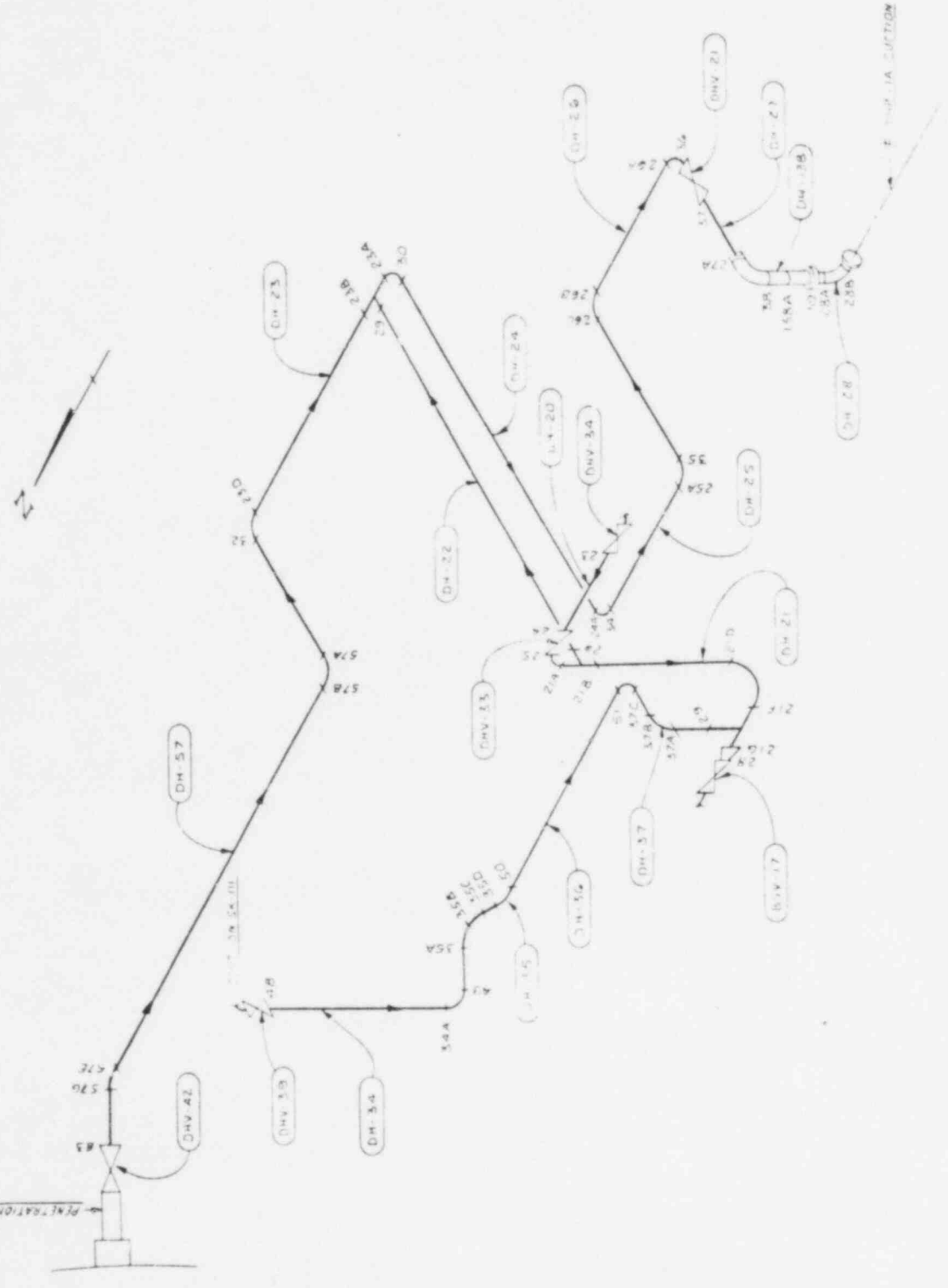


REVISIONS

| NO. | DESCRIPTION | DATE | APPROVAL |
|-----|-------------|------|----------|
| 1 | | | |
| 2 | | | |

| | | | |
|---|--|--|--|
| FLORIDA POWER CORP CRYSTAL RIVER UNIT 3 | | THE DESIGNER'S SIGNATURE THE DESIGNER'S TITLE THE DESIGNER'S COMPANY | |
| WELD IDENTIFICATION 12" DH LINE, HOT LEG TO DHV-41 | | SCALE: 1" = 10' | |
| DESIGNED BY: <i>[Signature]</i> CHECKED BY: <i>[Signature]</i> APPROVED BY: <i>[Signature]</i> DATE: 5/13/75 | | SK I C O | |

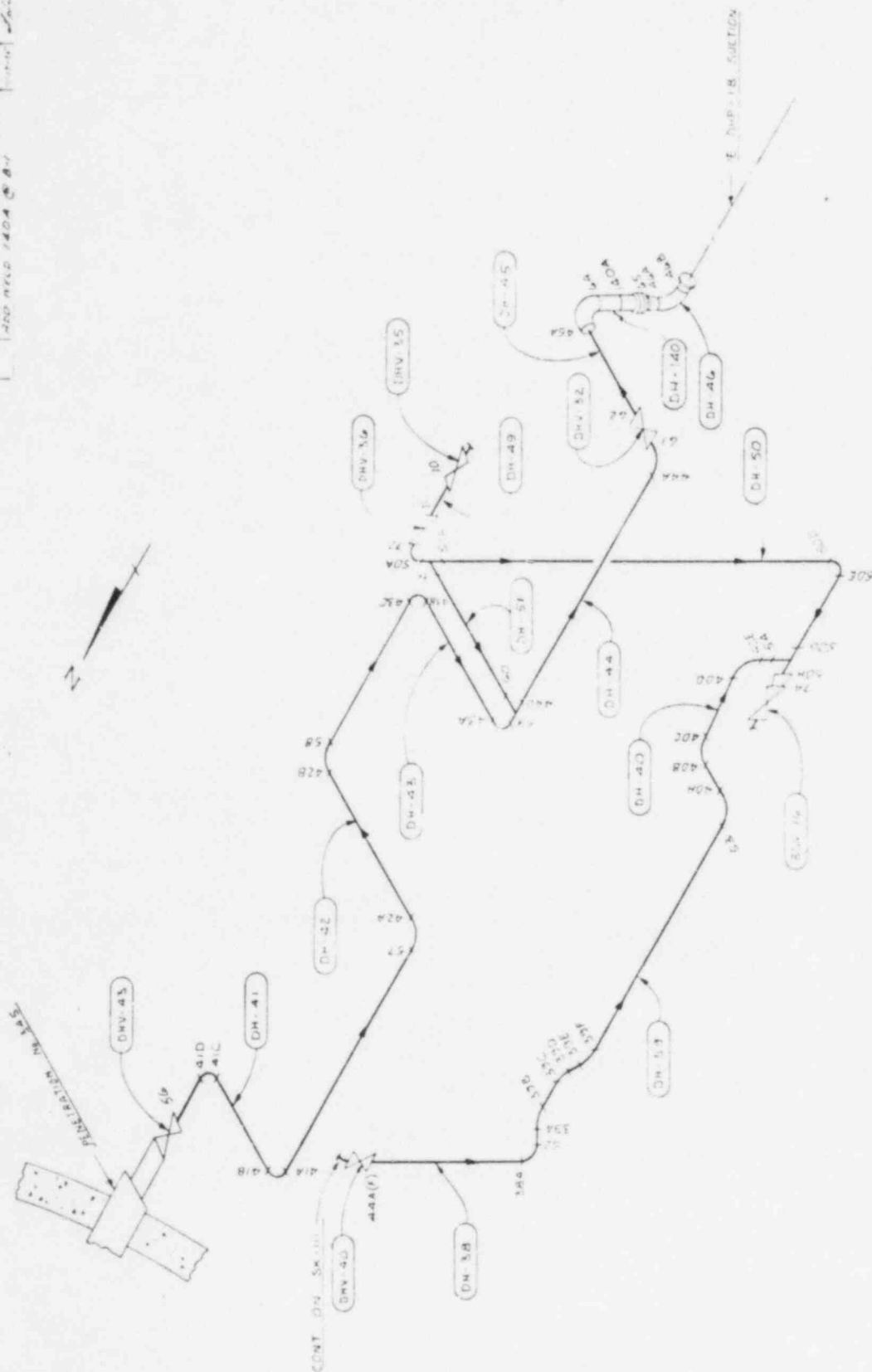
| REVISIONS | | |
|-----------|---------------------------|----------|
| NO. | DESCRIPTION | DATE |
| 1 | CODE 24-25 TO 24-26 & B-1 | 11-27-75 |
| 2 | ADD WELD 1804 (J B-1) | 11-27-75 |



| | | | |
|---|--|---|--|
| FLORIDA POWER CORP. CRYSTAL RIVER UNIT 3 | | THE BARCODE & WHICH TO PRINT ORIGINATOR'S NAME | |
| ISSUED BY: [Signature] | | DATE: 11-27-75 | |
| APPROVED BY: [Signature] | | DATE: 11-27-75 | |
| PROJECT NO. 102-072-000 | | WELD IDENTIFICATION | |
| 102-072-000 | | 14" DH CONN FROM DHV-42 | |
| 102-072-000 | | DHV-39 & DHV-34 TO DH | |
| 102-072-000 | | PUMP-1A & BSV-17 | |
| SCALE: 1" = 100' | | REV: SK-109 C 1 | |

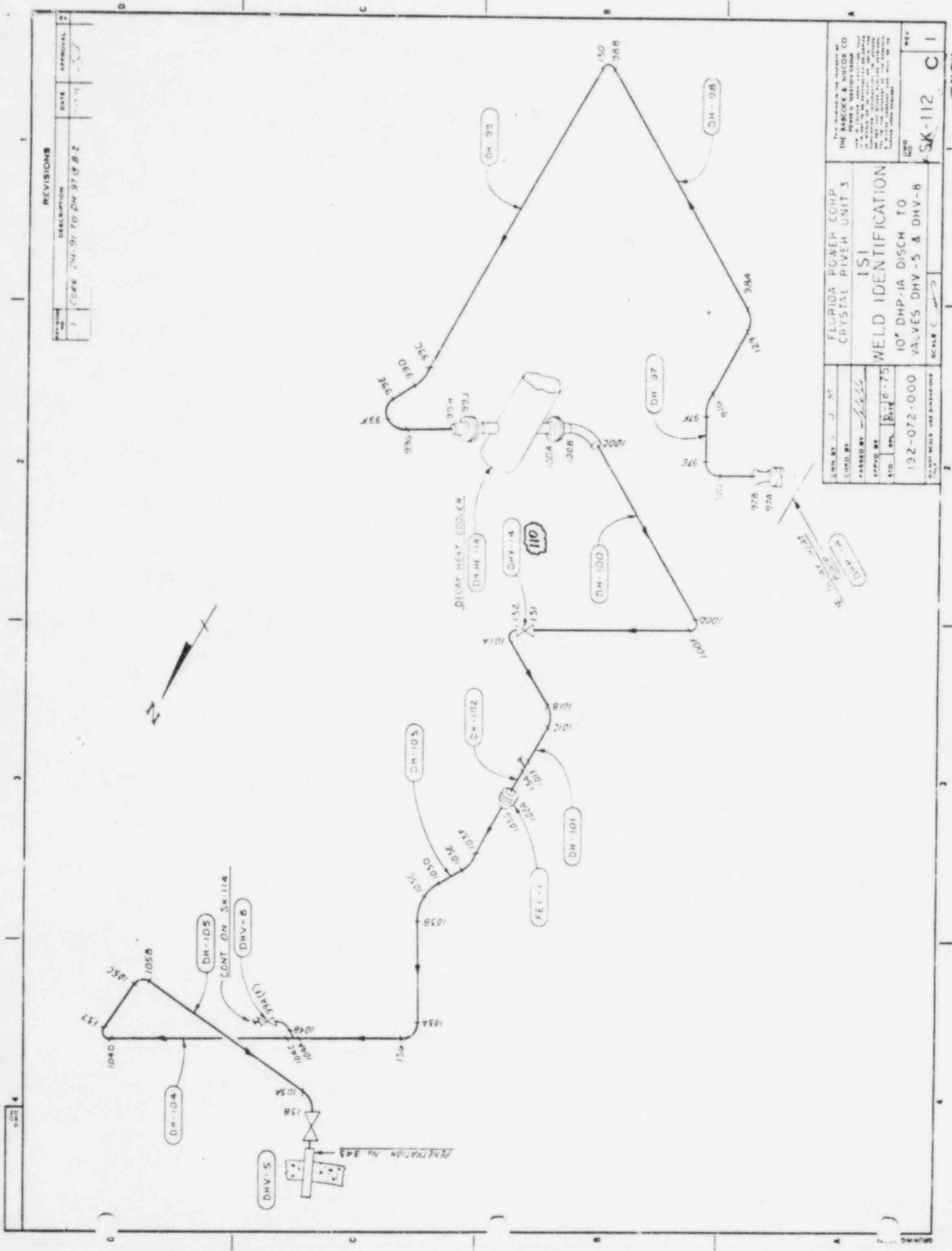
REVISIONS

| NO. | DESCRIPTION | DATE | APPROVAL |
|-----|---------------------------|-------|----------|
| 1 | CEP WELD SOP TO SIZE 0.82 | 11-11 | WHL |
| 2 | ADD WELD 140A @ B-1 | | |



| | | |
|---|--|-------------------|
| <p>FLORIDA POWER CORP CRYSTAL RIVER UNIT 3</p> | <p>WELD IDENTIFICATION 14" DH CONN. FROM DHV 43 DHV 40 & DHV 35 TO DH PUMP 1B & BSV 16</p> | <p>SK-110 C I</p> |
| <p>DATE: 11-11-75 BY: [Signature] APP. BY: [Signature] CHK. BY: [Signature]</p> | <p>SCALE: 1" = 100'</p> | <p>REV. 1</p> |

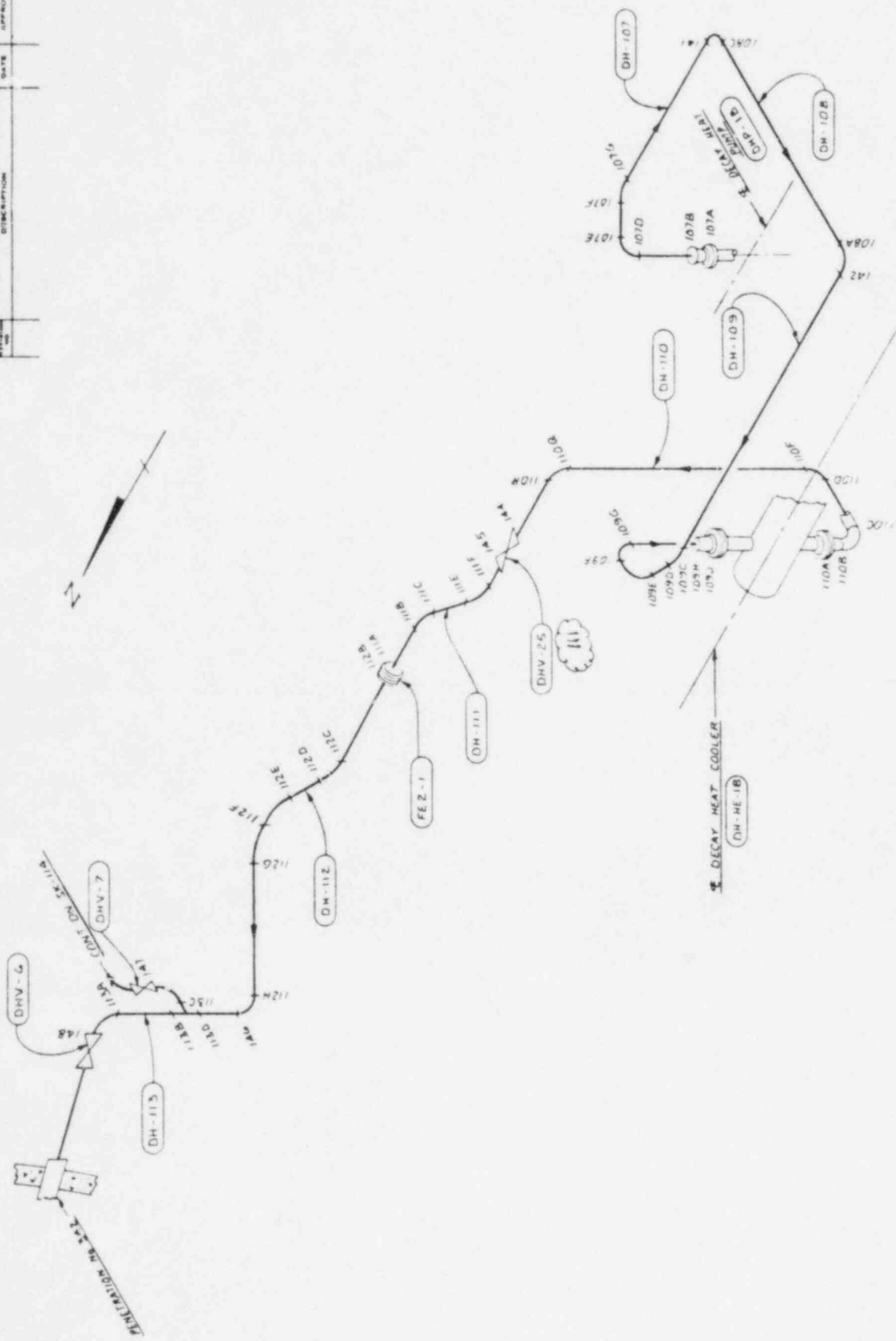
[illegible][illegible]



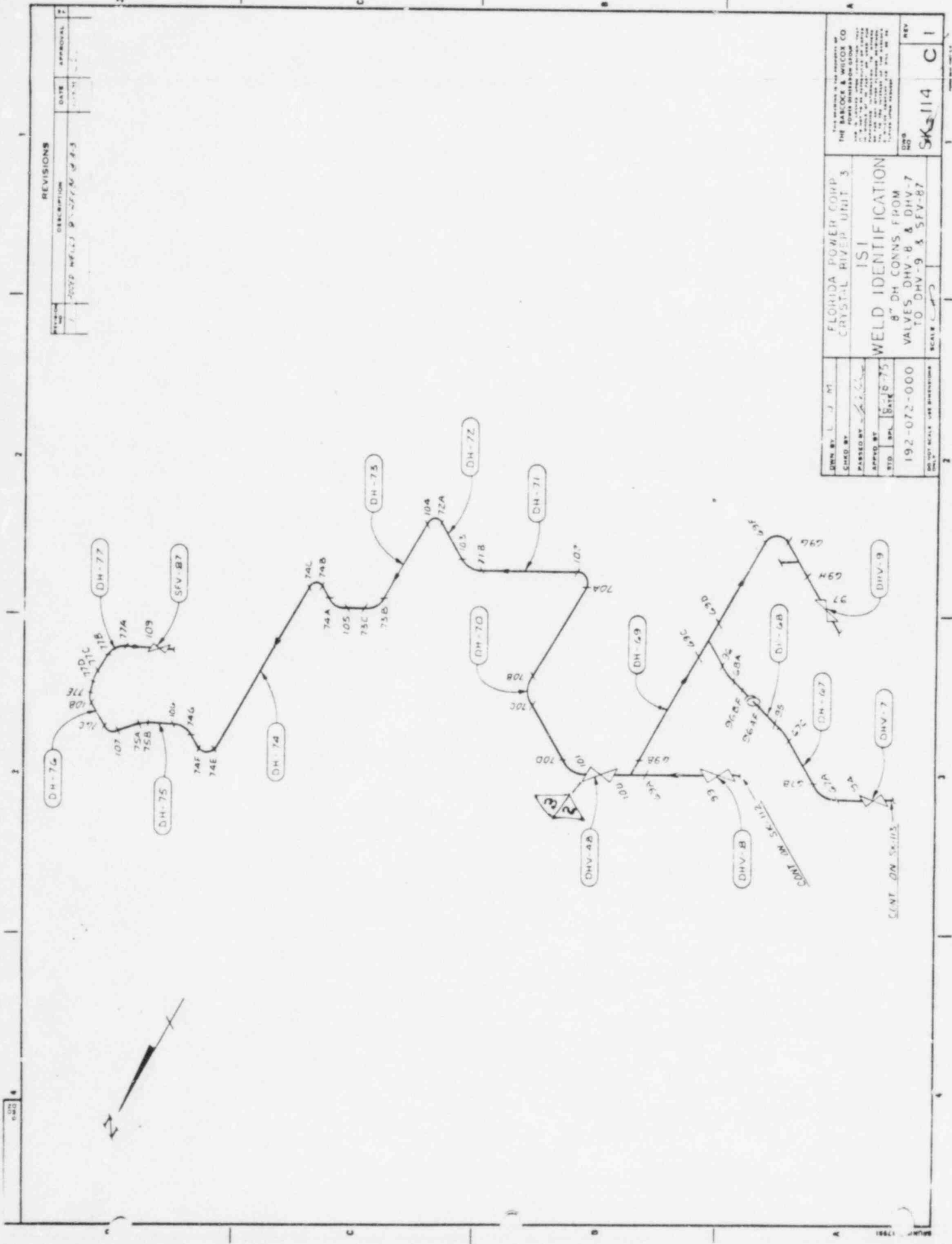
| | |
|---|------------|
| THE BARCOCK & WILCOX CO. 1000 S. W. 10th AVE. MIAMI, FL 33135 TEL. 345-1111 FAX 345-1112 BARCOCK & WILCOX CO. IS AN EQUAL OPPORTUNITY EMPLOYER MINORITIES AND WOMEN ARE ENCOURAGED TO APPLY FOR EMPLOYMENT | |
| FLORIDA POWER CORP. CRYSTAL RIVER UNIT 3 WELD IDENTIFICATION 10" DHP-1A DISCH TO VALVES DHV-5 & DHV-8 | SK-112 C 1 |

| | |
|--|---------------------------------|
| DWG. BY: J. NT CHECK BY: J. NT PASSED BY: J. NT DATE: 10-16-75 132-072-000 SCALE: 1" = 100' | 132-072-000 SCALE: 1" = 100' |
|--|---------------------------------|

| REVISIONS | | |
|-----------|-------------|------|
| NO. | DESCRIPTION | DATE |
| 1 | | |
| 2 | | |



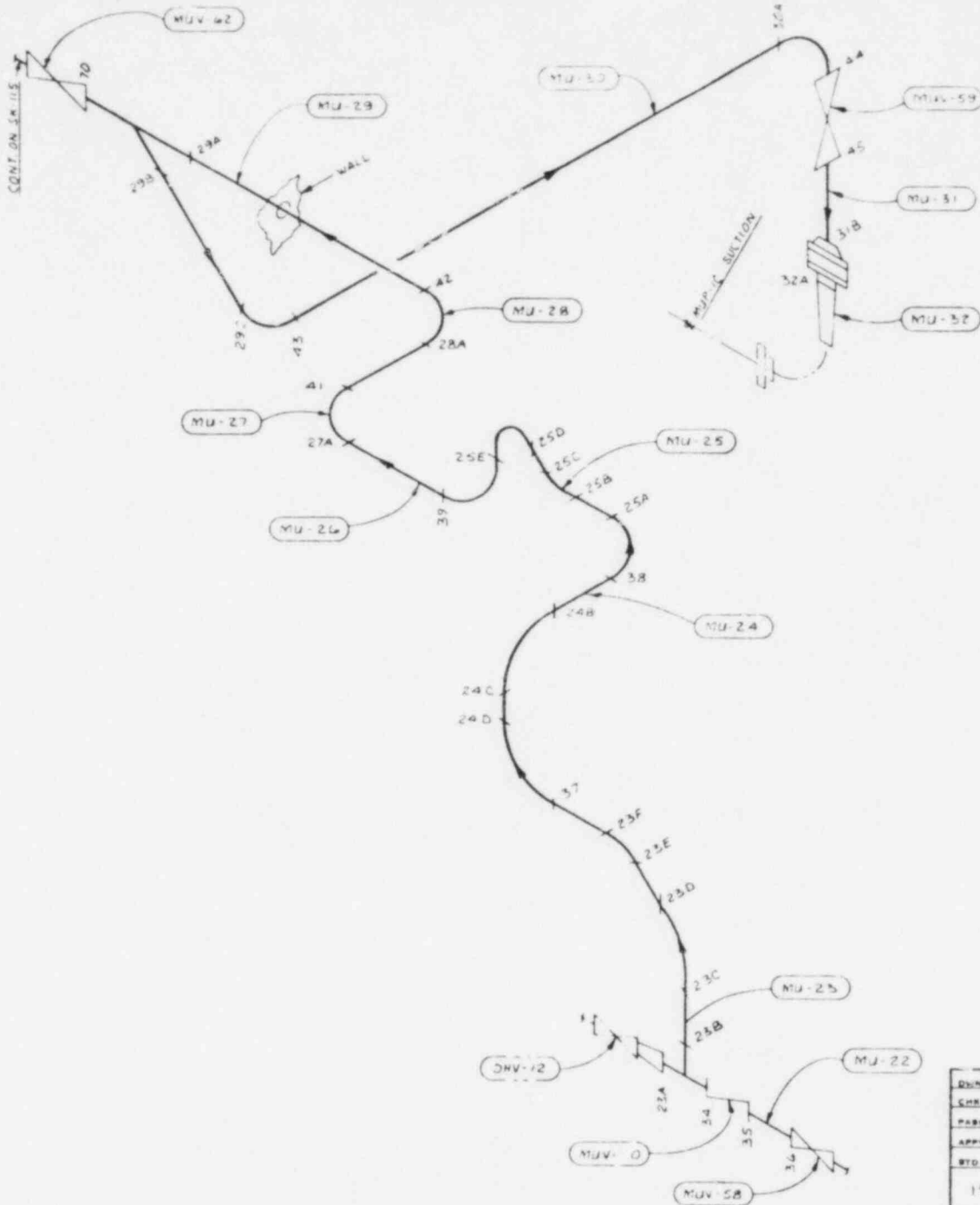
| | | | |
|---|-----------------------------------|--|--|
| FLORIDA POWER CORP CRYSTAL RIVER UNIT 3 | | THE WORK IS TO BE DONE IN ACCORDANCE WITH THE SPECIFICATIONS AND STANDARDS OF THE AMERICAN SOCIETY OF MECHANICAL ENGINEERS (ASME) AND THE AMERICAN INSTITUTE OF STEEL CONSTRUCTION, INC. (AISC). | |
| WELD IDENTIFICATION 10" DHP-1B DISCH. TO VALVES DHV-6 & DHV-7 | | SK-113 C O | |
| DESIGNED BY: L. J. N-1 CHECKED BY: <i>[Signature]</i> APPROVED BY: <i>[Signature]</i> DATE: 12-18-75 | 192-072-000 SCALE: 1" = 10'-0" | | |



| REVISIONS | |
|-----------|-------------------------|
| NO. | DESCRIPTION |
| 1 | ISSUED FOR CONSTRUCTION |

| | |
|---|--------------|
| THIS DRAWING IS THE PROPERTY OF THE BAKER & WILCOX CO. AND IS NOT TO BE REPRODUCED OR COPIED IN ANY MANNER WITHOUT THE WRITTEN PERMISSION OF THE COMPANY. IT IS TO BE KEPT IN THE ORIGINAL FILE AND NOT TO BE LOANED OR GIVEN TO ANY OTHER PERSON. IT IS TO BE RETURNED TO THE COMPANY WHEN NOT NEEDED. | |
| FLORIDA POWER CORP. CRYSTAL RIVER UNIT 3 | |
| WELD IDENTIFICATION 8" DH CONNS FROM VALVES DHV-8 & DHV-7 TO DHV-9 & SFV-87 | |
| DESIGNED BY: L. J. M. CHECKED BY: <i>[Signature]</i> APPROVED BY: <i>[Signature]</i> DATE: 5-18-75 | REV: 1 C1 |

CONT. ON SK-115



| REVISIONS | | | |
|-----------|-------------|------|----------|
| REV. NO. | DESCRIPTION | DATE | APPROVAL |
| 1 | | | |



| | | |
|---|---|---|
| DESIGNED BY: L. J. M. CHECKED BY: [Signature] APPROVED BY: [Signature] STD. NO. 192-072-000 DATE: 6-19-75 | FLORIDA POWER CORP. CRYSTAL RIVER UNIT 3 ISI WELD IDENTIFICATION 6 COINS FROM MUV-58 & MUV-62 TO PUMP-1C & MUV-62 | THIS DRAWING IS THE PROPERTY OF THE BANCROFT & WILCOX CO. POWER GENERATION GROUP IT IS NOT TO BE REPRODUCED OR COPIED IN ANY MANNER OR FOR ANY PURPOSE WITHOUT THE WRITTEN PERMISSION OF THE GROUP. A WRITTEN REQUEST FOR THIS INFORMATION WILL BE FURNISHED UPON REQUEST. |
| SCALE: 1" = 10' | REV. NO. SK-116 C O | REV. NO. |