

**LOUISIANA**  
**POWER & LIGHT**

142 DELARONDE STREET • P.O. BOX 6008  
NEW ORLEANS, LOUISIANA 70174-6008 • (504) 366-2345

October 3, 1983

W3P83-3180  
3-A1.01.04  
3-P43  
3-A1.10

Director of Nuclear Reactor Regulation  
Attention: Mr. G.W. Knighton, Chief  
Licensing Branch No. 3  
Division of Licensing  
U.S. Nuclear Regulatory Commission  
Washington, D.C. 20555

SUBJECT: Waterford SES Unit 3  
Docket No. 50-382  
Removable Section in South Wall of Diesel Generator 3BS Room

Dear Mr. Knighton:

The purpose of this letter is to inform you of the installation of a removable section in the south wall of the 3BS Diesel Generator Room (Note Attachment 1, Figure X-5 showing the subject wall separating RAB 15 and RAB 23). This subject was previously discussed with Mr. D. Kubicki, of the NRC staff, during a telephone conversation on September 14, 1983 with LP&L's Mr. E. Senac.

The south wall of the 3BS Emergency Diesel Generator Room has now been fitted with a thirty by nineteen foot, twelve inch thick section consisting of removable, acoustical, fire rated panel assemblies. These assemblies, known as "Fire-Noise-Lock Panels", and manufactured by Industrial Acoustics Company replace the previous block wall configuration. The individual panels are four inches thick and have been tested and fire rated by UL for 90 minutes with fire facing the sound absorptive surfaces (i.e., from the 3BS EDG Room side), and 45 minutes from the solid surface (i.e., from the south corridor side, RAB 23). The wall actually consists of two layers of these panels separated by four inches of air; each layer has the sound absorptive side facing the EDG Room. Please note that the appropriate vendor documents have been attached for your review (Attachment 2).

This arrangement is a change from that currently described in the FSAR, which states that the two fire areas interfacing at this wall (RAB 15/3BS-EDG Room and RAB 23/Corridor Area and Common Passageway) are separated by a three hour barrier. As construction proceeded it was apparent to LP&L that it was essential for the subject wall to be removable in order to allow maintainability of the 3BS EDG. The removal of the 30' x 19' section will provide access for the passage of maintenance equipment and large parts associated with the diesel.

13001  
11

Page 2  
W3P83-3180  
3-A1.01.04  
3-P43  
3-A1.10

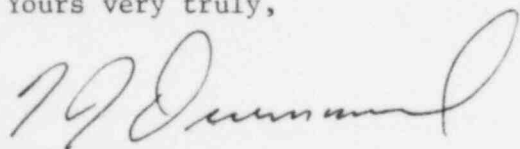
When the removable wall is viewed in conjunction with other fire protection measures provided at these two adjacent areas, as described below, one should be assured that adequate fire protection is being provided.

The removable panels are rated at 90 minutes each from the 3BS EDG Room side and 45 minutes each from the corridor side, with automatic suppression and detection provided on each side. In addition, there are four manual hose stations located in the area, several fire extinguishers and a fire locker (the locker contains extra hose, additional extinguishers, a portable foam unit, a smoke ejector and self contained breathing equipment). Furthermore, excellent access is provided for a fire brigade and equipment via the large double doors on the west side of the RAB and by way of the corridors leading to the area.

It should also be pointed out that the combustible loading in the RAB 23 is very low (0.3 hours). In fact, the ratio of combustible load to barrier rating here would compare favorably to that of many other plant areas. LP&L therefore believes that the substantial defense-in-depth protection, which includes administrative controls as well as the hardware described, provides adequate protection to the plant equipment throughout this area.

LP&L intends to revise the FSAR to document the installation of this wall in Amendment No. 34. If there are any questions please call Mr. E. Senac at (504) 467-2791 or Mr. K. Curley at (504) 363-8950.

Yours very truly,



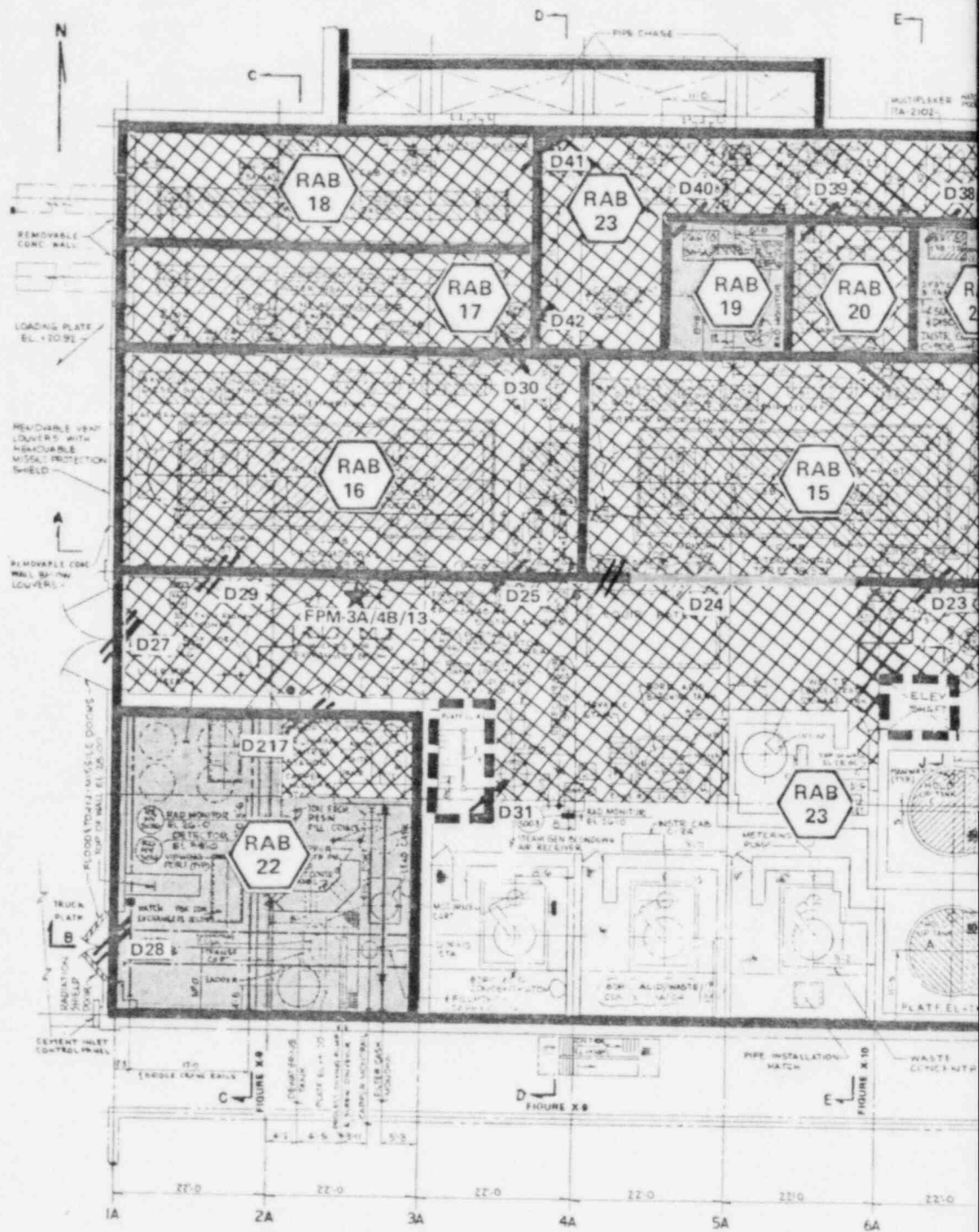
F.J. Drummond  
Nuclear Services Manager

FJD/EJS/ch

Attachments

cc: J. Wilson (NRC), D. Kubicki (NRC), L. Constable (NRC, Resident Inspector), W.M. Stevenson, E.L. Blake, K.N. Curley, Central Records, Nuclear Records (4), Licensing Library

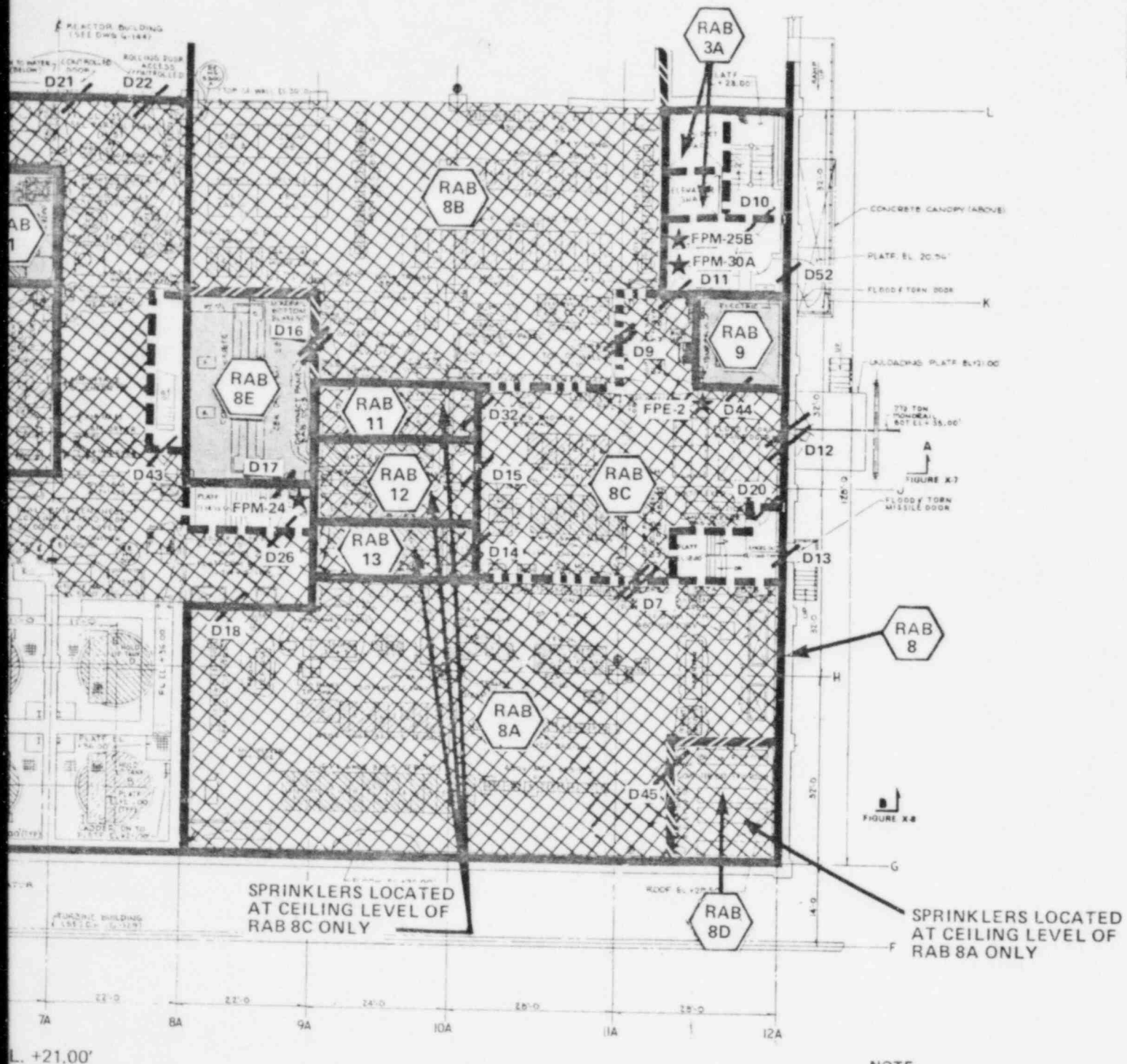
Note: All original attachments to D. Kubicki; all others, Attachments 1 & 2 only



Also Available On  
Aperture Card

PRC  
APERTURE  
CARD

8310070 235-01



NOTE:  
FOR ADDITIONAL  
GENERAL ARRANGEMENT  
INFORMATION REFER TO  
FSAR CHAPTER 1  
GENERAL ARRANGEMENT  
FIGURE 1.2-1 THRU 1.2-25.

AMENDMENT NO. 32 (6/83)

LOUISIANA POWER & LIGHT CO.  
Waterford Steam Electric Station

FIRE PROTECTION  
REACTOR AUXILIARY BUILDING  
PLAN EL +21.00'

FIGURE X-5

- END
- FIRE AREA/ZONE IDENTIFIER
- SAFETY RELATED EQUIPMENT
- 3 HOUR FIRE WALL
- - - 2 HOUR FIRE WALL
- · - · - 1 HOUR (MINIMUM) PARTIAL HEIGHT FIRE WALL. SERVICE PENETRATIONS THROUGH THIS WALL DO NOT REQUIRE FIRE SEALS OR FIRE DAMPERS.
- · - · - ZONE/ZONE FIRE WALLS - NO RATING REQUIRED. SERVICE PENETRATIONS THROUGH THIS WALL DO NOT REQUIRE FIRE SEALS OR FIRE DAMPERS.
- · - · - FIRE DOOR THROUGH WALL. SINGLE SWING, DOUBLE SWING FOR RATING SEE TABLE V.3.
- SPRINKLERED AREA (INCLUDES SMOKE AND/OR THERMAL DETECTION)
- GASEOUS SUPPRESSION SYSTEM
- SMOKE AND/OR THERMAL DETECTION
- HOSE RACK
- HALON EXTINGUISHERS
- DRY CHEMICAL EXTINGUISHERS
- PRESSURIZED WATER EXTINGUISHERS
- ★ FIRE PROTECTION CONTROL PANEL



EBASCO SERVICES INCORPORATED,

AGENT

WATERFORD SES UNIT NO. 3

P. O. BOX 70 - KILLONA, LOUISIANA 70066

ADDRESS

BILL TO

THIS ORDER NUMBER  
APPEAR ON ALL INVOICES  
BILLING PAPERS, CORRESPONDENCE,  
PIECES, PACKAGES,  
CONTAINERS SHIPPED.

INVOICE IN TRIPLICATE

SHIP TO

TO INDUSTRIAL ACOUSTICS CO. INC.  
1100 Commerce Avenue  
Bronx, N. Y. 10462

Hwy. 18 - Taft, La.

Attn: Thomas

SUS - 22S

ROUTE VIA	F.O.B.	TERMS	ORDER
Best Way	S.P.	N/30	7-2

DESCRIPTION	ITEM NUMBER	STORAGE LEVEL	ITEM NO.	QUANTITY	UNIT PRICE
Furnish, fabricate, and deliver, special factory assembled, removable, acoustical, <u>three hour UL</u> rated fire wall assembly (partition) for the emergency diesel generator room "a" in accordance with attached field sketch no. SK-1564-6.1.3-B-24. The partition shall be qualified as seismic category class II and shall be fabricated in such a manner that after erected, it will not collapse during an earthquake occurrence, (for seismic design, seller shall use 1 G for horizontal acceleration, .67G for vertical acceleration and both, horizontal and vertical loads to act simultaneously). Acoustical properties shall provide a noise reduction coefficient of 80 and a STC rating of 45. Wall panels shall be similar to "Regular Moduline Fire-Noise-Lock Panel ("4" thick)" as manufactured by Industrial Acoustic Co. Inc. The panels shall be filled with min. 4" of fiber-glass sound absorbing material and the metal skin of the panels shall be of 22 GA on the perforated side and 16 GA on the perforated side and 16 GA on the inperforated side. Seller shall prepare and submit one sepia and 3 copies of shop dwgs. along with seismic calculations for approval before fabrication can begin. Shop drawings shall indicate dimensions anchoring method, materials, gauges, connections, welding, and fastening. One set of installation instruction is required.		B	1	lot	1

PREVIOUS ORDER TOTAL \$

AMOUNT THIS SUPPLY \$

TOTAL TO DATE \$

SHIPMENT MUST BE AS SPECIFIED OR RIGHT IS RESERVED TO CANCEL

LOUISIANA POWER AND LIGHT COMPANY  
EBASCO SERVICES INCORPORATED, A

SAFETY RELATED

NON-SAFETY RELATED

DELIVERY  
REQUIRED

P.S.

8 wks after final  
approval

BY

FIELD PURCHASING AGENT

CHARGE TO

21-05114(2)

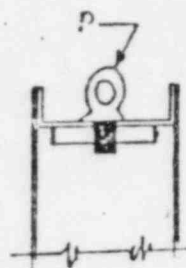
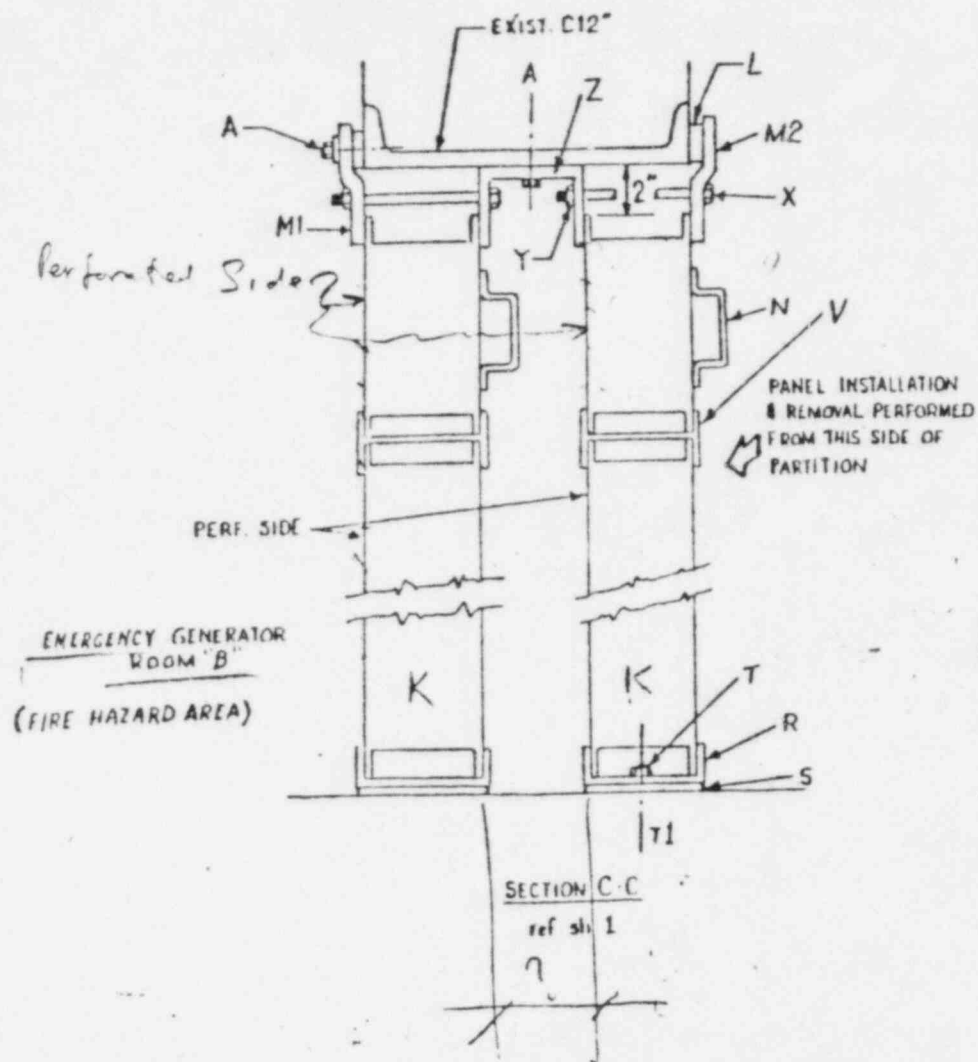
REQ'N NO.

32319

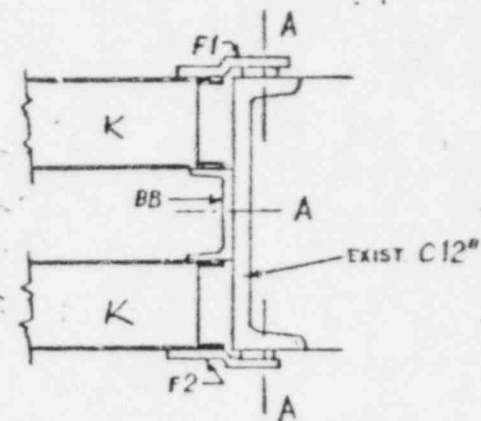
FILED WITH P.O. #

WPJ-9478

A. B. 1002



ATTACHMENT OF LIFTING EYE TO REINFORCING PLATE ON TOP OF 4' x 8' PANEL



SECTION D-D  
ref ch. 1

FOR APPROVAL	DESCRIPTION OF ISSUE	CHK. APPD.	RH	JOB # 40-2696	INDUSTRIAL ACOUSTICS COMPANY, INC. 1160 COMMERCE AVENUE BRONX, N.Y. 10462	DWG B-8215-358-2	ISSUE A
--------------	----------------------	------------	----	------------------	--	---------------------	------------

# ELEVATION

→ C (shl 2)

17	18	19	20	21	22	23	24
2	4	6	8	10	12	14	16
1	3	5	7	9	11	13	15

D  
shl 2

D  
shl 2

V = Ins. / H. J. J. J. J.

A

A

→ C (shl 2)

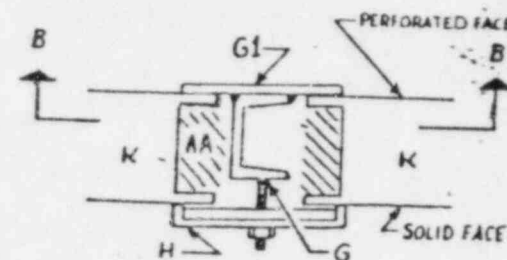
(7) PANELS @  $47\frac{7}{8}"$  + (7) COLUMNS @  $1.57' = 28' 10\frac{1}{8}"$  (346.125')

(1) PANEL @  $47\frac{7}{8}"$

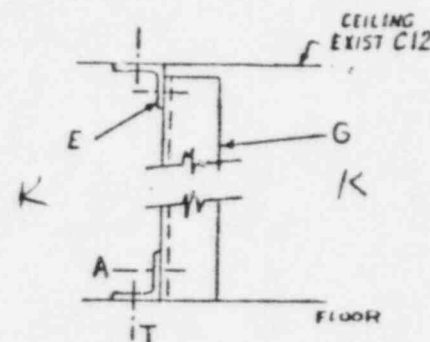
OVERALL WIDTH:  $28' 10\frac{1}{8}"$

→ 30' 0" (as built).

Adjust to match



SECTION A-A



SECTION B-B

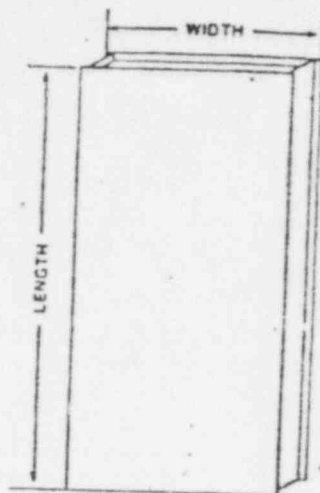
## OTHER DRAWINGS

- SECTIONS - DWG B-2
- DESCRIPTION OF PARTS - DWG A-3
- PREPARATION FOR INSTALLATION - DWG A-4
- INSTALLATION INSTRUCTIONS - DWG A-5
- SEISMIC CALCULATIONS - DWG A-6

FOR APPROVAL	RII	JOB #	INDUSTRIAL ACOUSTICS COMPANY, INC.	DWG.	ISSUE
BY	CHK. APPD.	40-2696	1160 COMMERCE AVENUE BRONX, N.Y. 10462	B-8216-368-1	A
DESCRIPTION OF ISSUE					

# MODULINE® FIRE-NOISE-LOCK PANEL

TYPICAL PANEL CONFIGURATION



PANEL THICKNESS - 4 INCHES

DIMENSIONS - FIRE NOISE LOCK PANELS

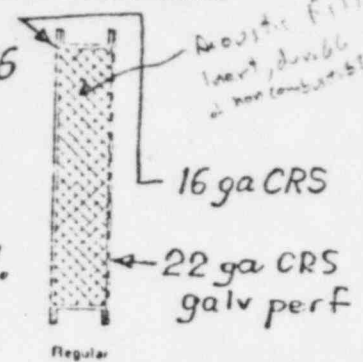
W x L in	W x L in	W x L in
16 x 60	36 x 60	48 x 60
16 x 72	36 x 72	48 x 72
16 x 78	36 x 78	48 x 78
16 x 84	36 x 84	48 x 84
16 x 96	36 x 96	48 x 96
16 x 120	36 x 120	48 x 120
16 x 144	36 x 144	48 x 144
-	36 x 168*	48 x 168*

\*These panels are furnished in full widths, do not deduct for clearances. Intermediate sizes of panels are available, ranging from 6 in. to 144 in. in either dimension. These are used as fillers with standard panels, and to complete the structure under special conditions. Length can also vary from 144 in. to 168 in. providing width remains a full 36 in. or 48 in. width. Refer to Moduline Design Guidelines Data Sheet MDS 1040 for further information. Maximum panel size 48 in. W x 168 in. L.

SOUND TRANSMISSION LOSS, dB

OCTAVE BAND CENTER FREQUENCIES Hz		125	250	500	1K	2K	4K	8K	STC	
Panel	Test									
Fire Alarm Lock	69075	27	20	22	41	50	55	67	71	45

CROSS SECTION OF  
FIRE-NOISE-LOCK® PANEL



Note: Job 40-2696  
All non-galvanized,  
steel surfaces to  
be primed with  
3 MDELT Carbo-Zinc 11.  
(Applies to panels &  
all steel joiners &  
struct. members in job)

APPLICATION AND CONSTRUCTION DATA

REGULAR - Solid surface is 16 gauge cold rolled steel. Perforated surface is 22 gauge galvanized steel. Design weight: 10.5 lb/sq ft, "U" factor: 0.07.

Fire Rating: Fire Noise-Lock panels are fire rated by Underwriters Laboratory, Inc. for 90 minutes with fire facing sound absorptive surfaces and 45 minutes with fire facing solid surface. Each Fire-Noise-Lock panel bears a label with Listing Mark of Underwriters Laboratory, Inc., certifying dual ratings.

USE: Partitions, offices, test cells, cubicles, rooms, machinery enclosures, sound barriers where a fire rating by Underwriters Laboratory is required in a sound absorptive acoustical structure.

See MDS 1030 for Engineering Specifications

## NOTES

All dimensions are nominal • Acoustic fill is inert, mildew-resistant, vermin-proof • Materials used are durable, non-combustible • Welded and riveted internally reinforced construction • Perforated material has 3/32 in. diameter holes on 3/16 in. staggered centers • Standard finish: One coat grey prime paint • Galvanized available at extra cost - 18 gauge solid, 22 gauge perforated • Perforated available to 11 gauge hot rolled steel for especially rugged environments.

SOUND ABSORPTION COEFFICIENTS

OCTAVE BAND CENTER FREQUENCIES, Hz	125	250	500	1K	2K	4K	8K	NRC
Fire Noise Lock	0.94	1.15	1.11	1.00	1.03	1.03	1.04	0.95

Gauge	Thickness	Weight
22	1/64	102.99
16	1/32	105.98
18	1/16	104.22
11	1/8	119.6

## FRASCO FIELD VERSION DOCUMENT

V-6,1,3-1009-8 n-0

LOUISIANA POWER & LIGHT COMPANY  
WATERFORD S.E. UNIT NO. 3

CONTRACT NO. WP3-9178

REVIEWED WITHOUT COMMENTS*	1
REVIEWED WITH COMMENTS AS NOTED*	2
NOT APPLICABLE*	3
NO COMMENTS, NO PRINT RETURNED	4
NO FURTHER REPRODUCIBLE REQUIRED	5
REPRODUCIBLE	6
REPRODUCIBLE	7
DO NOT PROCEED WITH FABRICATION REPRODUCIBLE	8

\*Print INCLUDED NOTES

FIRE PROTECTION WALL -  
Emergency Room "B"  
FIRE-NOISE-LOCK PANEL

REVIEWED BY	DATE	REVIEWED BY	DATE

Document reviewed only for general conformity to the design and drawings and for confirmation of physical details of construction. From design and drawings, the design and construction of the structure, including all other details, shall be the responsibility of the designer.

JOB 40-2696

A8216-368-7



- (A) 1/2-13 HEX HD BOLT CD PLT  
 (E) L 1 1/4 x 1 1/4 x 1/8 A36 PRIME PTD x 2 1/4" LG.  
 (F) 1" BATTEN PLATES 4" WIDE HRS PRIME PAINTED  
 (G) CHANNEL ASSY CONSISTING OF C3" x 4.1" WELDED TO 11 GA HRS PL(G1), AND 1/2-13 x 3" LONG FULLY THREADED WELD STUDS 12" O.C.; PRIME PAINTED  
 (H) BATTEN PLATE, FORMED U 4" x 3/4" x 11 GA HRS, (2) @ 8' LG & (1) @ 2'-9" LG PER COLUMN. SHEETROCK INSULATION INSTALLED IN CHANNEL WEB.  
 (K) FIRE NOISE-LOCK ACOUSTICAL PANEL \*  
 (L) FIBERGLASS CLOTH GASKET  
 (M) 1/4" BATTEN - SEE (F)  
 (N) HEAVY DUTY DRAWER-PULL HANDLE - (2) PER PANEL, USED IN 2'-6 5/8" x 4' PANELS ONLY  
 (P) REMOVABLE EYEBOLTS FOR LIFTING 4' x 8' PANELS  
 (R) FLOOR CHANNEL, 16 GA CRS 4" x 1" U, PRIME PAINTED  
 (S) FIBERGLASS CLOTH GASKET  
 (T) 3/8" CONCRETE ANCHOR AND NUT  
 (V) INSULATED "H" JOINER, 20 GA ROLL FORMED CRS, PRIME PAINTED  
 (AA) "ULTRALITE" ROLL INSULATIONS 1" THK x 4" W  
 (BB) C4" x 5.4" x 18'-9" LG, A36, PRIME PAINTED

\* IMPORTANT NOTE: U.L. FIRE LABEL APPLIES TO ITEMS K AND V ONLY. OTHER COMPONENTS WERE SELECTED TO PROVIDE COMPATIBLE PERFORMANCE BUT ARE NOT LABELLED.

*Note*  
 All exposed steel sections shall be sprayed w/ fireproofing mtl to give you 3 hours rating requirement (except K and V)

*all should be labeled or in the field*

*Insulate H-Joiner - 20 ga CRS - Prime Painted*

A 8582 RH FOR APPROVAL			THIS DESIGN AND DRAWING IS THE EXCLUSIVE PROPERTY OF THE INDUSTRIAL ACOUSTICS COMPANY INCORPORATED AND IS SUBMITTED AS CONFIDENTIAL. NO REPRODUCTION OR CONNECTION WITH YOUR COMPANY IS TO BE MADE WITHOUT WRITTEN PERMISSION. IF YOU REQUEST IT MUST BE RETURNED IMMEDIATELY.		SCALE
ISSUE	DATE	BY	DESCRIPTION OF ISSUE	CHK.	
INDUSTRIAL ACOUSTICS COMPANY 1160 COMMERCE AVENUE BRONX, N.Y. 10462					JOB # 40-2696
					DWG. A 8216-368 - 3

EBASCO FIELD VENDOR DOCUMENT	
V-6.1.3-1009-3 R-0	
LOUISIANA POWER & LIGHT COMPANY WATERFORD S.E.S. UNIT NO. 3	
CONTRACT NO. WP3-9478	
REVIEWED WITHOUT COMMENTS	1
REVIEWED WITH COMMENTS AS NOTED	2
NOT APPLICABLE	3
NO COMMENTS, NO PRINT RETURNED	4
NO FURTHER REPRODUCIBLE	5
REVISION REVISED	6
REPRODUCIBLE	7
REPRODUCIBLE	8
DO NOT PROCEED WITH FABRICATION	
REVISION REVISED REPRODUCIBLE	
PART INCLUDED NOTES:	
FIRE PROTECTION WALL - Emer. Gen. Room "B"	
DESCRIPTION OF PARTS -	
DRAWN BY	DATE
REVIEWED BY	DATE
<small>Documents prepared only for general conformity to specification and drawings and for confirmation of physical interior of structure with the drawings. The drawings are not to be used for construction of the structure. The drawings are not to be used for construction of the structure. The drawings are not to be used for construction of the structure.</small>	

FILE NO.

# PREPARATION FOR INSTALLATION

1. Read and understand all instructions before proceeding. Contact manufacturer if there are any questions: (212) 931-8000. Special Products Department. *(R. Herbin)*
2. Note that panels weigh about 10.5 lb/ft<sup>2</sup> meaning the larger panels weigh about 340 lbs. and the small filler panels weigh about 85 lbs. Panels must not be dropped. Inspect panel edges; any edges bent in shipping or handling may be straightened by careful use of pliers.
3. The perforated faces of all panels will face toward the emergency generator room.
4. Using screws provided, attach handles (N) to all (16) small panels. Tapped holes are provided on panel solid faces.
5. Check that holes for eyebolts are present in 4' long edges of larger panels and that holes are clear and threads usable. The edge having these holes is the top of the panel. These holes are lifting eyebolt attachment points.
6. Refer to anchor bolt layout and to hole location drawings which will be provided when the order is shipped. Install all anchor bolts and provide required tapped holes in existing 12" channels which frame top and sides of opening.
7. A movable scaffold having a floor height of about 14' will be required for manual installation of the top row of panels. Other panels may be lifted into place using a crane capable of lifting a 400 lb. load to a height of about 16'.
8. Before any panel is installed the panel edges all around must be filled with roll insulation, item AA shown in section A-A. *(Dwg B-1)*

EBASCO FIELD VENDOR DOCUMENT			
V-6.1.3-1009- 4 R-0			
LOUISIANA POWER & LIGHT COMPANY WATERFORD S.E.S. UNIT NO. 3			
CONTRACT NO. <i>WP3-9476</i>			
A	REVIEWED WITHOUT COMMENTS*	1	
	REVIEWED WITH COMMENTS AS NOTED*	2	
	NOT APPLICABLE*	3	
	NO COMMENTS NO PRINT RETURNED	4	
B	NO FURTHER REPRODUCIBLE REQUIRED	5	
	REVISION REQUIRED	6	
	REVISION REQUIRED	7	
	REVISION REQUIRED	8	
*Print INCLUDED NOTES:			
FIRE PROTECTION WALL - Emergency Gen. Room "B"			
PREPARATION FOR INSTALLATION			
REVIEWED BY	DATE	REVIEWED BY	DATE

Document reviewed only for general conformity to standards and drawings and for confirmation of technical details of the drawings with related drawings. It is not intended to be a substitute for the design and engineering of the project. The vendor is responsible for the design and engineering of the project. The vendor is responsible for the design and engineering of the project. The vendor is responsible for the design and engineering of the project.

A 19-583		APPROVAL		RH		THIS DRAWING IS THE PROPERTY OF THE INDUSTRIAL ACOUSTICS COMPANY. IT IS LOANED TO YOU FOR YOUR INFORMATION ONLY. IT IS NOT TO BE REPRODUCED OR USED IN ANY MANNER WITHOUT THE WRITTEN PERMISSION OF THE INDUSTRIAL ACOUSTICS COMPANY. IT MUST BE RETURNED IMMEDIATELY.		SCALE	
ISSUE	DATE	BY	DESCRIPTION OF ISSUE	CHK.		JOB #	DWG.		
						40-2696	A-8216-368 - 4		

FILE NO.

# INSTALLATION PROCEDURE

(References to right and left hand refer to elevation on sheet 1)

1. Locate and install floor channels (R) and gaskets (S) using nuts (T) attached to anchor studs (T1) installed in existing concrete floor. Holes are prepunched in channels on 16" centers.
2. Erect and install the channel assemblies (G) for the inner partition. Attach to floor using bolted angle clips which attach to every third anchor stud used to secure the floor channels. These angles nest in the floor channels. Attach channels to ceiling by using clip angles which bolt into tapped holes to be provided in roof channel.
3. Install horizontal (M1) and vertical (M2) batten plates using bolts (A) threaded into tapped holes to be provided in roof and side channels of opening.
4. Select a 4' x 8' panel. Locate the top 4' long edge, provided with 2 tapped holes in the channel web for installation of lifting eyes. Install lifting eyes. Lift the panel in place in position 1 on elevation, sheet 1. Bottom of panel shall rest in floor channel, and sides should rest against plate F1 on the left side and G1 on the right side. Remove eyebolts. (See sections AA & DD)
5. Place approximately 4' long joiner section (V) over top of panel just installed. Install another panel in position 2 following procedure of step 4.
6. Install 16' long section of C4 x 5.4 (BB) per section D-D. This will retain left edges of panels 1 and 2.
7. Repeat steps 4 and 5 to install panels in positions 2 and 3.
8. Install 16' long batten plate (H) to retain right edges of panels 1 and 2 and to retain left hand edges of panels 3 and 4.
9. Repeat steps 4, 5, and 8 for the next 5 vertical rows of (2) 8' high panels.
10. Repeat steps 4, 5, and 6 for the last vertical row of (2) 8' high panels.
11. Install joiners (V) over the tops of all second level panels.
12. Working from left to right install upper level panels. A scaffold must be used and the panels manually positioned using the handles provided. Secure upper panels by attaching 2' long sections of batten (H) to columns (G).

EDASCO FIELD VENDOR DOCUMENT			
V-613-1009-5 R-0			
LOUISIANA POWER & LIGHT COMPANY WATERFORD S.E.S. UNIT NO. 3			
CONTRACT NO. WP3-9478			
A S S E S S M E N T	REVIEWED WITHOUT COMMENTS	1	
	REVIEWED WITH COMMENTS AS NOTED	2	
	NOT APPLICABLE	3	
	NO COMMENTS NO PRINT RETURNED	4	
I T E M	NO FURTHER REPRODUCIBLE REQUIRED	5	
	FOR LIGHT REVISION	6	
	FOR REVISION	7	
	DO NOT PROCEED WITH FABRICATION IF REVISION REQUIRED	8	
Port INCLUDED NOTES:			
- FIRE PROTECTION WALL			
Emergency Room Room B			
INSTALLATION INSTRUCTIONS -			
SH.1			
REVIEWED BY	DATE	REVIEWED BY	DATE
<small>Document reviewed only for general conformity to specifications and drawings and for confirmation of physical existence of items shown with required details. The reviewing shall not be a warranty for items within responsibility for engineering design, materials, and all other details under the contract.</small>			

A 13 87 RH FOR APPROVAL				THIS DESIGN AND DRAWING IS THE EXCLUSIVE PROPERTY OF THE INDUSTRIAL ACOUSTICS COMPANY AND IS NOT TO BE REPRODUCED OR COPIED IN ANY MANNER WITHOUT THE WRITTEN PERMISSION OF THE COMPANY. IT MUST BE USED FOR THE PROJECT AND FOR NO OTHER PURPOSE. IT MUST BE RETURNED TO THE COMPANY WHEN REQUESTED.		SCALE
ISSUE	DATE	BY	DESCRIPTION OF ISSUE	CHK		
INDUSTRIAL ACOUSTICS COMPANY 1160 COMMERCE AVENUE BRONX, N.Y. 10462				JOB #	DWG.	
				40-2696	A-8216-368-5 sh1/2	

FILE NO

# INSTALLATION PROCEDURES - CONTINUED

13. After all upper panels are installed the spacer channel Z is bolted into the existing roof channel and through bolts are threaded into the welded nuts of batten M1. Installation of inner wall is now complete.
14. Move scaffold out of the way and install the outer wall using the same procedure as for the inner wall. Ensure that all M2 and F2 batten plates are installed.
15. Removal is in the reverse orders of installation. The battens are removed in sections and the work must be performed in correct order to prevent any panels other than the one being removed from becoming capable of falling.

ERASCO FIELD VENDOR DOCUMENT			
V-6.13-1009- 6 R-0			
LOUISIANA POWER & LIGHT COMPANY WATERFORD S.E.S. UNIT NO. 3			
CONTRACT NO. WP3-9478			
A	REVIEW	REVIEWED WITHOUT COMMENTS*	1
		REVIEWED WITH COMMENTS AS NOTED*	2
		NOT APPLICABLE*	3
		NO COMMENTS NO PRINT RETURNED	4
B	REVISION	NO FURTHER REPRODUCIBLE REQUIRED	5
		REVISION REVISED	6
		REPRODUCIBLE	7
		REVISION REVISED	8
		DO NOT PROCEED WITH FABRICATION	
		REVISION REVISED REPRODUCIBLE	
*Print INCLUDED		NOTES:	
FIRE PROTECTION WALL - Emerg. Gen. Room "B"			
INSTALLATION INSTRUCTIONS SH. a			
REVIEWED BY	DATE	REVIEWED BY	DATE
<small>Document reserved only for general continuity to specifications and drawings and for confirmation of physical features of design. It is not to be used for any other purpose. It is not to be copied or loaned without written permission. It is to be returned immediately.</small>			

A 15582 RH		FOR APPROVAL		THIS DESIGN AND DRAWING IS THE EXCLUSIVE PROPERTY OF THE INDUSTRIAL ACOUSTICS COMPANY INCORPORATED AND IS SUBMITTED FOR YOUR REVIEW AND OPINION IN CONNECTION WITH THE PROJECT. IT IS NOT TO BE USED FOR ANY OTHER PURPOSES. NO PART OF THIS DESIGN OR DRAWING IS TO BE REPRODUCED OR TRANSMITTED IN ANY FORM OR BY ANY MEANS, ELECTRONIC OR MECHANICAL, INCLUDING PHOTOCOPYING, RECORDING, OR BY ANY INFORMATION STORAGE AND RETRIEVAL SYSTEM, WITHOUT PERMISSION IN WRITING FROM INDUSTRIAL ACOUSTICS COMPANY INCORPORATED.		SCALE	
ISSUE	DATE	BY	DESCRIPTION OF ISSUE	CHK			
INDUSTRIAL ACOUSTICS COMPANY					JOB #	DWG	
					40-2696	A-8216-568-5 Sh. 2/2	

LE NO