

LOUISIANA
POWER & LIGHT

142 DELARONDE STREET • P.O. BOX 6008
NEW ORLEANS, LOUISIANA 70174-6008 • (504) 366-2345

February 10, 1984

W3P84-0249

3-A20.18

3-A1.01.04

Director of Nuclear Reactor Regulation
Attention: Mr. G. W. Knighton, Chief
Licensing Branch No. 3
Division of Licensing
U.S. Nuclear Regulatory Commission
Washington, D.C. 20555

SUBJECT: Waterford 3
Docket No. 50-382
Environmental Qualification

REFERENCE: LP&L Letter W3P83-1783 dated 6/13/83

Dear Sir:

Appendix 3B to SSER 5 contained a list of equipment subject to NUREG-0588 which had documentation deficiencies at the time of the NRC Environmental Qualification audit (1/4-6/83). Per the request of your Mr. H. Garg, we would like to note that the referenced letter provided resolution to most of those documentation deficiencies. Since that time all additional open items have been closed with the exception of Rosemount transmitters (qualification information will be forwarded under separate cover) and Borg-Warner actuators, Heated Junction Thermocouples, and Neutron Flux Monitors (JIO will be forwarded under separate cover). An updated Tab K listing is attached for your reference.

In addition, it is appropriate to note that 10CFR50.49 requires that all equipment subject to that regulation (other than those for which a JIO has been submitted and accepted) be qualified at the time of the Operating License issuance. In accordance with this regulation, we will notify you and provide a JIO if any of the applicable equipment has not been fully qualified as required.

Yours very truly,

K. W. Cook
Nuclear Support & Licensing Manager

KWC/RMF/cb

cc: E. L. Blake, W. M. Stevenson, J. Wilson, G. L. Constable, H. Garg

8402160159 840210
PDR ADOCK 05000382
E PDR

Cool
1/1

A/E: EBASE SERVICES INC.
UTILITY: LOUISIANA POWER & LIGHT

FACILITY: WATERFORD SES #3
INDEX OF QUALIFICATION STATUS/PUNCHLIST ITEMS

NSSS: COMBUSTION ENG.
CAPACITY: 1165 MW(E)

PAGE- 1

DOCUM. PACKAGE	TAG/ITEM REF#	Q588 CAT	QDEF NO	REV #	REMARKS	STATUS	WORK ITEM DESCRIPTION	SCHEDULE DATE	RESPONSIBLE	PRIORITY
3.1W3	TRIP&THROTTLE	A	1036	05	INSTALLED	QUALIFIED-WITHOUT EXCEPTION	1. FILE COMPLETE IN ALL ASPECTS			
	1SI-V1502B	A	0860	05	INSTALLED					
	1SI-V1504A	A	0979	05	INSTALLED					
	1SI-V1505TK1A	A	0865	05	INSTALLED					
	1SI-V1506TK1B	A	0866	05	INSTALLED					
	1SI-V1507TK2A	A	0978	05	INSTALLED					
	1SI-V1508TK2B	A	0867	05	INSTALLED					
	2HV-B158A	A	0926	05	INSTALLED					
	2HV-B159B	A	0927	05	INSTALLED					
	2HV-B160A	A	0928	05	INSTALLED					
	2HV-B161B	A	0929	05	INSTALLED					
	2HV-B162A	A	0930	05	INSTALLED					
	2HV-B163B	A	0931	05	INSTALLED					
	2HV-B164A	A	0932	05	INSTALLED					
	2HV-B165B	A	0933	05	INSTALLED					
	2HV-B167A	A	0934	05	INSTALLED					
	2HV-B168B	A	0935	05	INSTALLED					
	2HV-F253A	A	1030	05	INSTALLED					
	2HV-F254B	A	1031	05	INSTALLED					
	2SI-FM318A	A	0981	05	INSTALLED					
	2SI-FM349B	A	0982	05	INSTALLED					
	2SI-V1534	A	1137	05	INSTALLED					
	2SI-V1539B1	A	2107	05	INSTALLED					
	2SI-V1540B2	A	2105	05	INSTALLED					
	2SI-V1541A2	A	2102	05	INSTALLED					
	2SI-V1542A3	A	2111	05	INSTALLED					
	2SI-V1543B2	A	2103	05	INSTALLED					
	2SI-V1544B4	A	2108	05	INSTALLED					
	2SI-V1545B1	A	2104	05	INSTALLED					
	2SI-V1546A2	A	2110	05	INSTALLED					
	2SI-V1547B3	A	2106	05	INSTALLED					
	2SI-V1548A4	A	2112	05	INSTALLED					
	2SI-V1549A1	A	2101	05	INSTALLED					
	2SI-V1550A1	A	2109	05	INSTALLED					
	2SI-V1556	A	0980	05	INSTALLED					
	2SI-V1557	A	1138	05	INSTALLED					
	2SI-V1558	A	1139	05	INSTALLED					
	2SI-V1559	A	1140	05	INSTALLED					
	2SI-V326B	A	1141	05	INSTALLED					
	2SI-V327A	A	1142	05	INSTALLED					
	2SI-V801B	A	1143	05	INSTALLED					
	2SI-V802B	A	1144	05	INSTALLED					
	2SI-V809A	A	1145	05	INSTALLED					
	2SI-V810A	A	1146	05	INSTALLED					
	2SI-V811B	A	0983	05	INSTALLED					
	3CH-V106A	A	2138	05	INSTALLED					
	3CH-V107B	A	2140	05	INSTALLED					

SORT TYPE:PKG,STAT

GLOBAL REV# 5 02/06/84

A/E: EBASCO SERVICES INC.				FACILITY: WATERFORD SES #3				NSSS: COMBUSTION ENG.				PAGE- 2	
UTILITY: LOUISIANA POWER & LIGHT				INDEX OF QUALIFICATION STATUS/PUNCHLIST ITEMS				CAPACITY: 1165 MW(E)					
DOCUM.	TAG/ITEM	10588	QDEF	REV	REMARKS	STATUS	WORK ITEM	SCHEDULE	RESPONSIBLE	DATE	PRIO		
PACKAGE	REF#	CAT	NO	#			DESCRIPTION				RITY		
	3CH-V112A/B	A	12141	05	INSTALLED								
	3CH-V121A/B	A	12139	05	INSTALLED								
	3FW-V607A	A	10321	05	INSTALLED								
	3FW-V610 B	A	10331	05	INSTALLED								
	3HW-B206A	A	10031	05	INSTALLED								
	3HW-B207B	A	10041	05	INSTALLED								
	3HW-B208A	A	10051	05	INSTALLED								
	3HW-B209B	A	10061	05	INSTALLED								
	3WS-V684	A	10991	05	INSTALLED								
	3WS-V685	A	11001	05	INSTALLED								
3.1W3	3CH-V123A/B	A	12137	05	INSTALLED	REPLACE							
							2. FIELD VERIFICATION.		TO	P MERRITT			
									ADVISE				
SORT TYPE: PKG, STAT												GLOBAL REV# 5 02/06/84	

A/E: EBACCO SERVICES INC.
UTILITY: LOUISIANA POWER & LIGHT

FACILITY: WATERFORD SES #3
INDEX OF QUALIFICATION STATUS/PUNCHLIST ITEMS

NSSS: COMBUSTION ENG.
CAPACITY: 1165 MW(E)

PAGE- 3

DOCUM. PACKAGE	TAG/ITEM REF#	Q588 CAT	QDEF NO	REV #	REMARKS	STATUS	WORK ITEM DESCRIPTION	SCHEDULE DATE	RESPONSIBLE	PRIORITY
3.2W3	0-69(SA)	A	0957	05	INSTALLED	QUALIFIED-WITHOUT EXCEPTION	1. FILE COMPLETE IN ALL ASPECTS			
	0-70(SB)	A	0960	05	INSTALLED					
	1CH-F2501A/B	A	0814	05	INSTALLED					
	1SI-V2504	A	0987	05	INSTALLED					
	1SI-V2505	A	0924	05	INSTALLED					
	2BD-F603	A	0827	05	INSTALLED					
	2BD-F604	A	0822	05	INSTALLED					
	2BM-F109A/B	A	1126	05	INSTALLED					
	2CC-F155A2	A	1090	05	INSTALLED					
	2CC-F156B1	A	1093	05	INSTALLED					
	2CC-F157B2	A	1097	05	INSTALLED					
	2CC-F158A1	A	1044	05	INSTALLED					
	2CT-F159A2	A	1047	05	INSTALLED					
	2CC-F160B1	A	1050	05	INSTALLED					
	2CC-F161B2	A	1052	05	INSTALLED					
	2CH-F1518A/B	A	0808	05	INSTALLED					
	2CH-F1529A/B	A	0810	05	INSTALLED					
	2CS-F305A	A	0907	05	INSTALLED					
	2CS-F306B	A	0909	05	INSTALLED					
	2FP-F127	A	1040	05	INSTALLED					
	2FP-F129	A	1042	05	INSTALLED					
	2HV-B155A	A	0918	05	INSTALLED					
	2NG-F604	A	1102	05	INSTALLED					
	2SI-F1561A/B	A	0986	05	INSTALLED					
	2SI-F605TK1A	A	1149	05	INSTALLED					
	2SI-F606TK1B	A	1151	05	INSTALLED					
	2SI-F607TK2A	A	1153	05	INSTALLED					
	2SI-F608TK2B	A	1147	05	INSTALLED					
	2SL-L101A	A	1129	05	INSTALLED					
	2SI-L101A	A	0820	05	INSTALLED					
	2SI-L102B	A	1132	05	INSTALLED					
	2SI-L103A	A	1038	05	INSTALLED					
	2SI-L104B	A	1128	05	INSTALLED					
	2SI-L104B	A	1131	05	INSTALLED					
	2SL-F1501 A/B	A	1163	05	INSTALLED					
	2SL-F1502 A/B	A	1164	05	INSTALLED					
	2SL-F1503 A/B	A	1165	05	INSTALLED					
	2SL-F1504 A/B	A	1167	05	INSTALLED					
	2SL-F1505 A/B	A	1169	05	INSTALLED					
	2SL-F1506 A/B	A	1171	05	INSTALLED					
	2SL-F601	A	0847	05	INSTALLED					
	2SL-F602	A	1173	05	INSTALLED					
	2SL-F603	A	0849	05	INSTALLED					
	2SL-F604	A	1175	05	INSTALLED					
	3AC-F135B	A	1195	05	INSTALLED					
	3AC-F136A	A	1198	05	INSTALLED					
	3AC-F142A	A	1202	05	INSTALLED					

SORT TYPE:PKG, STAT

GLOBAL REV# 5 02/06/84

DOCUM. PACKAGE	TAG/ITEM REF#	0588 CAT	QDEF NO	REV #	REMARKS	STATUS	WORK ITEM DESCRIPTION	SCHEDULE DATE	RESPONSIBLE	PRI ORITY
	3AC-F143B	A	1204	05	INSTALLED					
	3AC-F144A	A	1207	05	INSTALLED					
	3AC-F149A	A	1209	05	INSTALLED					
	3AC-F150B	A	1211	05	INSTALLED					
	3AC-F151B	A	1213	05	INSTALLED					
	3AC-F623A	A	1223	05	INSTALLED					
	3AC-F625B	A	1225	05	INSTALLED					
	3AC-F627A	A	1227	05	INSTALLED					
	3AC-F629B	A	1229	05	INSTALLED					
	3AC-TM635B	A	1231	05	INSTALLED					
	3AC-TM637A	A	1233	05	INSTALLED					
	3AC-TM639B	A	1235	05	INSTALLED					
	3CC-F120 A	A	1241	05	INSTALLED					
	3CC-F121B	A	1242	05	INSTALLED					
	3CC-F122A	A	1244	05	INSTALLED					
	3CC-F123B	A	1246	05	INSTALLED					
	3CC-F132 A/B	A	1248	05	INSTALLED					
	3CC-F133 A/B	A	1250	05	INSTALLED					
	3CC-F240 A	A	1058	05	INSTALLED					
	3CC-F241B	A	1061	05	INSTALLED					
	3CC-TM148A	A	1082	05	INSTALLED					
	3CC-TM149B	A	1084	05	INSTALLED					
	3CH-F175 A/B	A	0812	05	INSTALLED					
	3HV-B175A	A	0937	05	INSTALLED					
	3HV-B176B	A	0939	05	INSTALLED					
	3HV-B210A	A	1009	05	INSTALLED					
	3HV-B215B	A	1012	05	INSTALLED					
	3HV-B216A	A	1014	05	INSTALLED					
	3HV-B217B	A	1017	05	INSTALLED					
	3HV-B218A	A	1019	05	INSTALLED					
	3HV-B223B	A	1021	05	INSTALLED					
	3HV-B224A	A	1023	05	INSTALLED					
	3HV-B225B	A	1025	05	INSTALLED					
	3HV-B226A	A	1027	05	INSTALLED					
	3HV-B227B	A	1029	05	INSTALLED					
3.2W3	1CH-F1516A/B	A	2135	05	INSTALLED	REPLACE				
							2. GET THE MISSING FIELD VERIFICATION SHEETS FROM THE SITE	TO ADVISE	P MERRITT	
	1SI-F1551TK1A	A	2115	05	INSTALLED					
	1SI-F1552TK1B	A	2148	05	INSTALLED					
	1SI-F1553TK2A	A	2116	05	INSTALLED					
	1SI-F1554TK2B	A	2100	05	INSTALLED					
	2BD-F605	A	0830	05	INSTALLED					
	2BD-F606	A	0821	05	INSTALLED					
	2CC-F146 A/B	A	1077	05	INSTALLED					
	2CC-F147 A/B	A	1080	05	INSTALLED					
	2CC-F154A1	A	1087	05	INSTALLED					
	2CC-F243 A/B	A	1064	05	INSTALLED					
	2CH-F1512 A/B	A	0804	05	INSTALLED					

A/E: EPASCO SERVICES INC.
UTILITY: LOUISIANA POWER & LIGHT

FACILITY: WATERFORD SES #3
INDEX OF QUALIFICATION STATUS/PUNCHLIST ITEMS

NSSS: COMBUSTION ENG.
CAPACITY: 1165 MWEE

PAGE- 5

DOCUM. PACKAGE	TAG/ITEM REF#	0588 CAT	QDEF NO	REV #	REMARKS	STATUS	WORK ITEM DESCRIPTION	SCHEDULE DATE	RESPONSIBLE	PRIORITY
	2CH-F1513 A/B	A	0806	05	INSTALLED					
	2HV-B151A	A	0911	05	INSTALLED					
	2HV-B152A	A	0913	05	INSTALLED					
	2HV-B153B	A	0951	05	INSTALLED					
	2HV-B154B	A	0916	05	INSTALLED					
	2HV-B156A	A	0920	05	INSTALLED					
	2HV-B157B	A	0923	05	INSTALLED					
	2IA-F601 A/B	A	1105	05	INSTALLED					
	2SI-FM317A	A	2113	05	INSTALLED					
	2SI-FM348B	A	2114	05	INSTALLED					
	2WM-F104A/B	A	0850	05	INSTALLED					
	2WM-F105A/B	A	0902	05	INSTALLED					
	2WM-F157A/B	A	0842	05	INSTALLED					
	2WM-F158A/B	A	0905	05	INSTALLED					
	3CC-F130A	A	1071	05	INSTALLED					
	3CC-F131B	A	1074	05	INSTALLED					
	3CC-F268A	A	1005	05	INSTALLED					
	3CC-F269 B	A	1066	05	INSTALLED					
	3CH-F117A/B	A	2131	05	INSTALLED					
	3CH-F170A	A	2129	05	INSTALLED					
	3CH-F171B	A	2130	05	INSTALLED					
3.2WS	2BM-F108 A/B	A	0800	05	INSTALLED	REPLACE AND RELOCATE	2. GET THE MISSING FIELD VERIFICATION SHEETS FROM THE SITE	TO ADVISE	P. HERRETT	

SORT TYPE: PKG, STAT

GLOBAL REV# 5 02/06/84

A/E: EBASCO SERVICES INC.
UTILITY: LOUISIANA POWER & LIGHT

FACILITY: WATERFORD SES #3
INDEX OF QUALIFICATION STATUS/PUNCHLIST ITEMS

NSSS: COMBUSTION ENG.
CAPACITY: 1165 MW(E)

PAGE- 6

DOCUM. PACKAGE	TAG/ITEM REF#	0588 CAT	QDEF NO	REV #	REMARKS	STATUS	WORK ITEM DESCRIPTION	SCHEDULE DATE	RESPONSIBLE	PRIORITY
3.3W3	EMERG SGFW PUMP	A	1035	05	INSTALLED	QUALIFIED WITHOUT EXCEPTION	1. FILE COMPLETE IN ALL ASPECTS			

SORT TYPE: PKG, STAT

GLOBAL REV# 3 02/06/84

AFE: EBASCO SERVICES INC.
UTILITY: LOUISIANA POWER & LIGHT

FACILITY: WATERFORD SES #3
INDEX OF QUALIFICATION STATUS/PUNCHLIST ITEMS

NSSS: COMBUSTION ENG.
CAPACITY: 1165 MW(E)

PAGE- 7

DOCUM. PACKAGE	TAG/ITEM REFR	0588 CAT	QDEF NO	REV #	REMARKS	STATUS	WORK ITEM DESCRIPTION	SCHEDULE DATE	RESPONSIBLE	PRIORITY
4. 1W3	AH-1(3A-SA)	A	0884	05	INSTALLED	QUALIFIED-WITHOUT EXCEPTION	1. FILE COMPLETE IN ALL ASPECTS			
	AH-1(3B-SB)	A	0954	05	INSTALLED					
	AH-1(3C-SA)	A	0952	05	INSTALLED					
	AH-1(3D-SB)	A	0885	05	INSTALLED					

SORT TYPE: PKG, STAY

GLOBAL REV# 5 02/06/84

A/E: EBASCO SERVICES INC.
 UTILITY: LOUISIANA POWER & LIGHT

FACILITY: WATERFORD SES #3
 INDEX OF QUALIFICATION STATUS/PUNCHLIST ITEMS

NSSS: COMBUSTION ENG.
 CAPACITY: 1165 MW(E)

PAGE- 8

DOCUM. PACKAGE	TAG/ITEM REF#	DSR8 CAT	QDEF NO	REV #	REMARKS	STATUS	WORK ITEM DESCRIPTION	SCHEDULE DATE	RESPONSIBLE	PRIORITY
4. 2W3	AUX.CCM	A	0359	05	INSTALLED	QUALIFIED-WITHOUT EXCEPTION	1. FILE COMPLETE IN ALL ASPECTS			
	AUX.CCM	A	0880	05	INSTALLED					
	CCW MAKE-UP	A	1069	05	INSTALLED					
	CCW MAKE-UP	A	0881	05	INSTALLED					
	CONTAINMENT	A	0836	05	INSTALLED					
	CONTAINMENT	A	0879	05	INSTALLED					

SORT TYPE: PKG, STAT

GLOBAL REV# 5 02/06/84

N/E: EBASCO SERVICES INC.
UTILITY: LOUISIANA POWER & LIGHT

FACILITY: WATERFORD SES #3
INDEX OF QUALIFICATION STATUS/PUNCHLIST ITEMS

NSSS: COMBUSTION ENG.
CAPACITY: 1165 MW(E)

PAGE- 9

DOCUM. PACKAGE	TAG/ITEM REF#	0588 CAT	QDEF NO	REV #	REMARKS	STATUS	WORK ITEM DESCRIPTION	SCHEDULE DATE	RESPONSIBLE	PRI RITY
4. 3W3	EMERGENCY	A	1034	05	INSTALLED	QUALIFIED-WITHOUT EXCEPTION	1. FILE COMPLETE IN ALL ASPECTS			
	EMERGENCY SGFM	A	0872	05	INSTALLED					

SORT TYPE:PKG,STAT

GLOBAL REV# 5 02/06/84

A/E: EBASCO SERVICES INC.
UTILITY: LOUISIANA POWER & LIGHT

FACILITY: WATERFORD SES #3
INDEX OF QUALIFICATION STATUS/PUNCHLIST ITEMS

NSSS: COMBUSTION ENG.
CAPACITY: 1165 MW(E)

PAGE- 10

DOCUM. PACKAGE	TAG/ITEM REF#	0588 CAT	QDEF NO	REV #	REMARKS	STATUS	WORK ITEM DESCRIPTION	SCHEDULE DATE	RESPONSIBLE	PRIORITY
4. 9W3	AH- 2(3A-SA)	A	0863	05	INSTALLED	QUALIFIED-WITHOUT EXCEPTION	1. FILE COMPLETE IN ALL ASPECTS			
	AH- 2(3B-SB)	A	0861	05	INSTALLED					
	AH- 2(3C-SA)	A	0864	05	INSTALLED					
	AH- 2(3D-SB)	A	0862	05	INSTALLED					
	AH- 3(3A-SA)	A	1115	05	INSTALLED					
	AH- 3(3B-SB)	A	1116	05	INSTALLED					
	AH-13(3A-SA)	A	0882	05	INSTALLED					
	AH-13(3B-SB)	A	0883	05	INSTALLED					
	AH-17(3A-SA)	A	0857	05	INSTALLED					
	AH-17(3B-SB)	A	1114	05	INSTALLED					
	AH-18(3A-SA)	A	1178	05	INSTALLED					
	AH-19(3B-SB)	A	1179	05	INSTALLED					
	AH-17(3B-SB)	A	1122	05	INSTALLED					
	AH-22(3A-SAB)	A	1180	05	INSTALLED					
	AH-22(3B-SAB)	A	0869	05	INSTALLED					
	E-17(3A-SA)	A	0876	05	INSTALLED					
	E-17(3B-SB)	A	0877	05	INSTALLED					
	E-18(3A-SA)	A	1123	05	INSTALLED					
	E-18(3B-SB)	A	1176	05	INSTALLED					
	E-23(3A-SA)	A	0894	05	INSTALLED					
	E-23(3B-SB)	A	0895	05	INSTALLED					
	E-41(3A-SA)	A	1181	05	INSTALLED					
	E-41(3B-SB)	A	1182	05	INSTALLED					
	E-3(3A-SA)	A	1188	05	INSTALLED					
	E-3(3B-SB)	A	1187	05	INSTALLED					

SORT TYPE:PKG,STAT

GLOBAL REV# 5 02/06/84

A/E: EBASCO SERVICES INC. UTILITY: LOUISIANA POWER & LIGHT			FACILITY: WATERFORD SES #3 INDEX OF QUALIFICATION STATUS/PUNCHLIST ITEMS			NSSS: COMBUSTION ENG. CAPACITY: 1165 MW(E)		PAGE- 11	
DOCUM. PACKAGE	TAG/ITEM REF	0588 QDEF CAT NO	REV	REMARKS	STATUS	WORK ITEM DESCRIPTION	SCHEDULE DATE	RESPONSIBLE	PRIORITY
4.10W3	E-28(38-SB)	A	0990	05 INSTALLED	QUALIFIED WITHOUT EXCEPTION	1. FILE COMPLETE IN ALL ASPECTS			
	E-28(3A-SA)	A	0988	05 INSTALLED					

SORT TYPE: PKG, STAT GLOBAL REV# 5 02/06/84

A/E: EBASCO SERVICES INC.
UTILITY: LOUISIANA POWER & LIGHT

FACILITY: WATERFORD SES #3
INDEX OF QUALIFICATION STATUS/PUNCHLIST ITEMS

NSSS: COMBUSTION ENG.
CAPACITY: 1165 MW(E)

PAGE- 12

DOCUM. PACKAGE	TAG/ITEM REF#	0588 CAT	QDEF NO	REV #	REMARKS	STATUS	WORK ITEM DESCRIPTION	SCHEDULE DATE	RESPONSIBLE	PRIORITY
4.1143	BAMU P A	A	2145	05	INSTALLED	QUALIFIED-WITHOUT EXCEPTION	1. FILE COMPLETE IN ALL ASPECTS			
	BAMU P B	A	2146	05	INSTALLED					

SORT TYPE: PKG, STAT

GLOBAL REV# 5 02/06/84

A/E: EBASCO SERVICES INC.
 UTILITY: LOUISIANA POWER & LIGHT

FACILITY: WATERFORD SES #3
 INDEX OF QUALIFICATION STATUS/PUNCHLIST ITEMS

NSSS: COMBUSTION ENG.
 CAPACITY: 1165 MW(E)

PAGE- 13

DOCUM. PACKAGE	TAG/ITEM REF#	0588 CAT	0000 NO	0000 REV	REMARKS	STATUS	WORK ITEM DESCRIPTION	SCHEDULE DATE	RESPONSIBLE	PRIORITY
4.12W3	HPSI P A	A	2125	05	INSTALLED	QUALIFIED-WITHOUT EXCEPTION	1. FILE COMPLETE IN ALL ASPECTS			
	HPSI P A/B	A	2127	05	INSTALLED					
	HPSI P B	A	2126	05	INSTALLED					

SORT TYPE: PKG, STAT

GLOBAL REV# 5 02/06/84

A/E: EBASCO SERVICES INC.
UTILITY: LOUISIANA POWER & LIGHT

FACILITY: WATERFORD SES #3
INDEX OF QUALIFICATION STATUS/PUNCHLIST ITEMS

NSSS: COMBUSTION ENG.
CAPACITY: 1165 MW(E)

PAGE- 15

DOCUM. PACKAGE	TAG/ITEM REF#	0588 QDEF REV			REMARKS	STATUS	WORK ITEM DESCRIPTION	SCHEDULE DATE	RESPONSIBLE	PRIO RITY
		CAT	NO	#						
4.14W3	CHGG P A	A	2142	05	INSTALLED	QUALIFIED-WITHOUT EXCEPTION	1. FILE COMPLETE IN ALL ASPECTS			
	CHGG P A/B	A	2144	05	INSTALLED					
	CHGG P B	A	2143	05	INSTALLED					

SORT TYPE:PKG,STAT

GLOBAL REV# 5 02/06/84

A/E: EBASCO SERVICES INC.
UTILITY: LOUISIANA POWER & LIGHT

FACILITY: WATERFORD SEC #3
INDEX OF QUALIFICATION STATUS/PUNCHLIST ITEMS

NSSS: COMBUSTION ENG.
CAPACITY: 1165 MW(E)

PAGE- 16

DOCUM. PACKAGE	TAG/ITEM REF#	0588 CAT	QDEF NO	REV #	REMARKS	STATUS	WORK ITEM DESCRIPTION	SCHEDULE DATE	RESPONSIBLE	PRIORITY
6.1W3	D25;D50;D82	-	A	0601	05	INSTALLED	QUALIFIED-WITHOUT EXCEPTION	1. FILE COMPLETE IN ALL ASPECTS		

SORT TYPE:PKG,STAT

GLOBAL REV# 5 02/06/84

A/E: EBASCO SERVICES INC.
UTILITY: LOUISIANA POWER & LIGHT

FACILITY: WATERFORD SES #3
INDEX OF QUALIFICATION STATUS/PUNCHLIST ITEMS

NSSS: COMBUSTION ENG.
CAPACITY: 1165 MW(E)

PAGE- 17

DOCUM. PACKAGE	TAG/ITEM REF	0588 CAT	QDEF NO	REV #	REMARKS	STATUS	WORK ITEM DESCRIPTION	SCHEDULE DATE	RESPONSIBLE	PRIORITY
6.2W3	D15-01, 01-02	A	0618	05	INSTALLED	QUALIFIED-WITHOUT EXCEPTION	1. FILE COMPLETE IN ALL ASPECTS			

SOFT TYPE: PKG, STAT

GLOBAL REV# 5 02/06/84

A/E: ERASCO SERVICES INC.
UTILITY: LOUISIANA POWER & LIGHT

FACILITY: WATERFORD SES #3
INDEX OF QUALIFICATION STATUS/PUNCHLIST ITEMS

NSSS: COMBUSTION ENG.
CAPACITY: 1165 MW(E)

PAGE- 18

DOCUM. PACKAGE	TAG/ITEM REF#	0588 CAT	QDEF NO	REV #	REMARKS	STATUS	WORK ITEM DESCRIPTION	SCHEDULE DATE	RESPONSIBLE	PRIORITY
6.3W3	050-01,050-02,	A	0617	05	INSTALLED	QUALIFIED WITHOUT EXCEPTION	1. FILE COMPLETE IN ALL ASPECTS			
	071-01	A	0603	05	INSTALLED					
	074-01	A	0614	05	INSTALLED					
	085-01,086-03	A	0609	05	INSTALLED					
	025-03,025-09	A	0610	05	INSTALLED					

SORT TYPE:PKG,STAT

GLOBAL REV# 5 02/06/84

A/E: EBASCO SERVICES INC.
UTILITY: LOUISIANA POWER & LIGHT

FACILITY: WATERFORD SES #3
INDEX OF QUALIFICATION STATUS/PUNCHLIST ITEMS

NSSS: COMBUSTION ENG.
CAPACITY: 1165 MW(E)

PAGE- 19

DOCUM. PACKAGE	TAG/ITEM REF#	0588 0 DEF REV			REMARKS	STATUS	WORK ITEM DESCRIPTION	SCHEDULE DATE	RESPONSIBLE	PRIO RITY
		CAT	NO	#						
6.4V3	015-01,015-02	A	0607	00	INSTALLED	QUALIFIED-WITHOUT EXCEPTION	1. FILE COMPLETE IN ALL ASPECTS			
	025,050,071,072	A	0615	05	INSTALLED					

SORT TYPE:PKG,STAT

GLOBAL REV# 5 02/06/84

A/E: EBASCO SERVICES INC.
UTILITY: LOUISIANA POWER & LIGHT

FACILITY: WATERFORD SES #3
INDEX OF QUALIFICATION STATUS/PUNCHLIST ITEMS

MSSS: COMBUSTION ENG.
CAPACITY: 1165 MW(E)

PAGE- 20

DOCUM. PACKAGE	TAG/ITEM REF#	0588 2DEF REV			REMARKS	STATUS	WORK ITEM DESCRIPTION	SCHEDULE DATE	RESPONSIBLE	PRIO RITY
		CAT	NO	#						
6.693	D86-01	A	0611	05	INSTALLED	QUALIFIED WITHOUT EXCEPTION	1. FILE COMPLETE IN ALL ASPECTS			

SORT: TYPE:PKG,STAT

GLOBAL REV# 5 02/06/84

A/E: EDASCO SERVICES INC.
UTILITY: LOUISIANA POWER & LIGHT

FACILITY: WATERFORD SES #3
INDEX OF QUALIFICATION STATUS/PUNCHLIST ITEMS

NSSS: COMBUSTION ENG.
CAPACITY: 1165 MW(E)

PAGE- 21

DOCUM. PACKAGE	TAG/ITEM REF#	0588 CAT	QDEF NO	REV #	REMARKS	STATUS	WORK ITEM DESCRIPTION	SCHEDULE DATE	RESPONSIBLE	PRIORITY
6.8WS	050,083,084,088	A	0605	05	INSTALLED	QUALIFIED-WITHOUT EXCEPTION	1. FILE COMPLETE IN ALL ASPECTS			

SORT TYPE: PKG, STAT

GLOBAL REV# 5 02/06/84

A/E: EBA SCO SERVICES INC.
UTILITY: LOUISIANA POWER & LIGHT

FACILITY: WATERFORD SES #3
INDEX OF QUALIFICATION STATUS/PUNCHLIST ITEMS

NSSS: COMBUSTION ENG.
CAPACITY: 1165 MW(E)

PAGE- 22

DOCUM. PACKAGE	TAG/ITEM REFR	0588 CAT	QDEF NO	REV #	REMARKS	STATUS	WORK ITEM DESCRIPTION	SCHEDULE DATE	RESPONSIBLE	PRIO RITY
8.1AW3	FT CH 0202	A	5127	05	INSTALLED	QUALIFIED	1. FILE COMPLETE IN ALL ASPECTS			
	FT CH 0212	A	5116	05	INSTALLED					
	FT SI 0311	A	0218	05	INSTALLED					
	FT SI 0321	A	0219	05	INSTALLED					
	FT SI 0331	A	0220	05	INSTALLED					
	FT SI 0341	A	0221	05	INSTALLED					
	LT CH 0226	A	5129	05	INSTALLED					
	LT CH 0227	A	5128	05	INSTALLED					
	LT SI 0301	A	4723	05	INSTALLED					
	LT SI 0302	A	4724	05	INSTALLED					
	LT SI 0305A	A	0204	05	INSTALLED					
	LT SI 0305B	A	0205	05	INSTALLED					
	LT SI 0305C	A	0206	05	INSTALLED					
	LT SI 0305D	A	0207	05	INSTALLED					
	PT SI 0303X	A	0209	05	INSTALLED					
	PT SI 0303Y	A	0210	05	INSTALLED					

SORT TYPE:PKG,STAT

GLOBAL REV# 5 02/06/84

DOCUM. PACKAGE	TAG/ITEM REF#	0588 CAT	QDEF NO	REV #	REMARKS	STATUS	WORK ITEM DESCRIPTION	SCHEDULE DATE	RESPONSIBLE	PRI RITY
8.1W3	DPT HV 5051AS	A	0169	05	INSTALLED	QUALIFIED-FOR INTERIM OPERATION	1. SOME FIELD VERIFICATION FORMS INCOMPLETE. (116,189, 190,2725.)	TO ADVISE	P HERRITT	
	DPT HV 5051BS	A	0170	05	INSTALLED					
	DPT HV 5054AS	A	0171	05	INSTALLED					
	DPT HV 5153AS	A	0175	05	INSTALLED					
	DPT HV 5153BS	A	0176	05	INSTALLED					
	DPT HV 5158AS	A	0177	05	INSTALLED					
	DPT HV 5158BS	A	0178	05	INSTALLED					
	DPT HV 5257AS	A	0179	05	INSTALLED					
	DPT HV 5257BS	A	0180	05	INSTALLED					
	DPT HV 5258AS	A	0181	05	INSTALLED					
	FT AC 5030AS	A	0100	05	INSTALLED					
	FT AC 5030BS	A	0101	05	INSTALLED					
	FT AC 5030CS	A	0102	05	INSTALLED					
	FT CC 5070AS	A	0120	05	INSTALLED					
	FT CC 5070BS	A	0121	05	INSTALLED					
	FT CC 5070CS	A	0122	05	INSTALLED					
	FT CC 5570AS	A	0123	05	INSTALLED					
	FT CC 5570BS	A	0124	05	INSTALLED					
	FT CC 7570A1S	A	0130	05	INSTALLED					
	FT CC 7570A2S	A	0131	05	INSTALLED					
	FT CC 7570B1S	A	0132	05	INSTALLED					
	FT CC 7570B2S	A	0133	05	INSTALLED					
	FT CS 7122AS	A	0152	05	INSTALLED					
	FT CS 7122BS	A	0153	05	INSTALLED					
	FT FW 8330AS	A	0164	05	INSTALLED					
	FT FW 8330BS	A	0165	05	INSTALLED					
	FT MS 0300AS	A	0186	05	INSTALLED					
	FT MS 0300BS	A	0187	05	INSTALLED					
	FT SI 0390AS	A	2733	05	INSTALLED					
	FT SI 0390BS	A	2734	05	INSTALLED					
	LT CD 9013AS	A	0148	05	INSTALLED					
	LT CD 9013BS	A	0149	05	INSTALLED					
	LT FW 1113A	A	0156	05	INSTALLED					
	LT FW 1113B	A	0157	05	INSTALLED					
	LT FW 1113C	A	0158	05	INSTALLED					
	LT FW 1113D	A	0159	05	INSTALLED					
	LT FW 1123A	A	0160	05	INSTALLED					
	LT FW 1123B	A	0161	05	INSTALLED					
	LT FW 1123C	A	0162	05	INSTALLED					
	LT FW 1123D	A	0163	05	INSTALLED					
	LT RC 0110X	A	0202	05	INSTALLED					
	LT RC 0110Y	A	0203	05	INSTALLED					
	LT SI 0311	A	4719	05	INSTALLED					
	LT SI 0321	A	4720	05	INSTALLED					
	LT SI 0331	A	4721	05	INSTALLED					
	LT SE 0341	A	4722	05	INSTALLED					
	PT AC 5011AS	A	0103	05	INSTALLED					

A/E: EBASCO SERVICES INC.
UTILITY: LOUISIANA POWER & LIGHT

FACILITY: WATERFORD SES #3
INDEX OF QUALIFICATION STATUS/PUNCHLIST ITEMS

NSSS: COMBUSTION ENG.
CAPACITY: 1165 MW(E)

PAGE- 24

DOCUM. PACKAGE	TAG/ITEM REF#	0588 CAT	DEF NO	REV #	REMARKS	STATUS	WORK ITEM DESCRIPTION	SCHEDULE DATE	RESPONSIBLE	PRIORITY
	PT AC 5011BS	A	0104	05	INSTALLED					
	PT AC 5011CS	A	0105	05	INSTALLED					
	PT AC 5020AS	A	0106	05	INSTALLED					
	PT AC 5020BS	A	0107	05	INSTALLED					
	PT AC 5020CS	A	0108	05	INSTALLED					
	PT CA 6701SMA	A	0109	05	INSTALLED					
	PT CA 6701SMB	A	0110	05	INSTALLED					
	PT CA 6701SMC	A	0111	05	INSTALLED					
	PT CA 6701SMD	A	0112	05	INSTALLED					
	PT CA 6702SMA	A	0113	05	INSTALLED					
	PT CA 6702SMB	A	0114	05	INSTALLED					
	PT CA 6702SMC	A	0116	05	INSTALLED					
	PT CA 6702SMD	A	0117	05	INSTALLED					
	PT CA 6750AS	A	0118	05	INSTALLED					
	PT CA 6750BS	A	0119	05	INSTALLED					
	PT CC 5060AS	A	0140	05	INSTALLED					
	PT CC 5060BS	A	0141	05	INSTALLED					
	PT CC 5060CS	A	0142	05	INSTALLED					
	PT CC 5070AS	A	0143	05	INSTALLED					
	PT CC 5070BS	A	0144	05	INSTALLED					
	PT CC 5070CS	A	0145	05	INSTALLED					
	PT CS 7111AS	A	0150	05	INSTALLED					
	PT CS 7111BS	A	0151	05	INSTALLED					
	PT FW 8322AS	A	0166	05	INSTALLED					
	PT FW 8322BS	A	0167	05	INSTALLED					
	PT FW 8322S	A	0168	05	INSTALLED					
	PT MS 0303AS	A	2731	05	INSTALLED					
	PT MS 0303BS	A	2732	05	INSTALLED					
	PT MS 1013A	A	0214	05	INSTALLED					
	PT MS 1013B	A	0215	05	INSTALLED					
	PT MS 1013C	A	0216	05	INSTALLED					
	PT MS 1013D	A	0217	05	INSTALLED					
	PT MS 1023A	A	0188	05	INSTALLED					
	PT MS 1023B	A	0189	05	INSTALLED					
	PT MS 1023C	A	0190	05	INSTALLED					
	PT MS 1023D	A	0191	05	INSTALLED					
	PT MS 8340S	A	0185	05	INSTALLED					
	PT RC 0101A	A	0192	05	INSTALLED					
	PT RC 0101B	A	0193	05	INSTALLED					
	PT RC 0101C	A	0194	05	INSTALLED					
	PT RC 0101D	A	0195	05	INSTALLED					
	PT RC 0102A	A	0196	05	INSTALLED					
	PT RC 0102B	A	0197	05	INSTALLED					
	PT RC 0102C	A	0198	05	INSTALLED					
	PT RC 0102D	A	0199	05	INSTALLED					
	PT RC 0103	A	0200	05	INSTALLED					
	PT RC 0105	A	0201	05	INSTALLED					
	PT SI 0311	A	2725	05	INSTALLED					
	PT SI 0321	A	2726	05	INSTALLED					
	PT SI 0331	A	2727	05	INSTALLED					

SORT TYPE:PKG,STAT

GLOBAL REV# 5 02/06/84

A/E: EBASCO SERVICES INC.
UTILITY: LOUISIANA POWER & LIGHT

FACILITY: WATERFORD SES #3
INDEX OF QUALIFICATION STATUS/PUNCHLIST ITEMS

NSSS: COMBUSTION ENG.
CAPACITY: 1165 MW(E)

PAGE- 25

DOCUM. PACKAGE	TAG/ITEM REF#	0588 QDEF REV			REMARKS	STATUS	WORK ITEM DESCRIPTION	SCHEDULE DATE	RESPONSIBLE	PRIORITY
		CAT	NO	#						
	PT SI 0341	A	2728	05	INSTALLED					
	PT SI 0390BS	A	0213	05	INSTALLED					
	PT SI 0390AS	A	0212	05	INSTALLED					

SORT TYPE:PKG,STAT

GLOBAL REV# 5 02/06/84

DOCUM. PACKAGE	TAG/ITEM REF#	0588 CAT	0450 NO	REV #	REMARKS	STATUS	WORK ITEM DESCRIPTION	SCHEDULE DATE	RESPONSIBLE	PRIORITY
3.2WS	DPT HV 5271AS	A	0450	05	INSTALLED	QUALIFIED-AWAITING CONFIRMATORY DATA	1. SOME FIELD VERIFICATION FORMS INCOMPLETE. (472-476, 466-467, 477-486, 222, 223, 4730, 5112, 2729)	TO ADVISE	P MERRITT	
	DPT HV 5271BS	A	0451	5A	INSTALLED					
	DPT HV 5272AS	A	0452	5A	INSTALLED					
	DPT HV 5272BS	A	0453	5A	INSTALLED					
	DPT HV 5273AS	A	0454	5A	INSTALLED					
	DPT HV 5273BS	A	0455	5A	INSTALLED					
	DPT HV 5274AS	A	0456	5A	INSTALLED					
	DPT HV 5274BS	A	0457	5A	INSTALLED					
	DPT HV 5275AS	A	0458	5A	INSTALLED					
	DPT HV 5275BS	A	0459	5A	INSTALLED					
	DPT HV 5276AS	A	0460	5A	INSTALLED					
	DPT HV 5276BS	A	0461	5A	INSTALLED					
	DPT HV 5277AS	A	0462	5A	INSTALLED					
	DPT HV 5277BS	A	0463	5A	INSTALLED					
	DPT RC 9116SMA	A	0479	05	INSTALLED					
	DPT RC 9116SMB	A	0480	05	INSTALLED					
	DPT RC 9116SMC	A	0481	05	INSTALLED					
	DPT RC 9116SMD	A	0482	05	INSTALLED					
	DPT RC 9126SMA	A	0483	05	INSTALLED					
	DPT RC 9126SMB	A	0484	05	INSTALLED					
	DPT RC 9126SMC	A	0485	05	INSTALLED					
	DPT RC 9126SMD	A	0486	05	INSTALLED					
	FT SI 1306BS	A	5112	05						
	FT SI 1307AS	A	4730	05						
	LT FW 1115AS	A	0464	05	INSTALLED					
	LT FW 1115BS	A	0465	05	INSTALLED					
	LT FW 1125AS	A	0466	05	INSTALLED					
	LT FW 1127BS	A	0467	05	INSTALLED					
	LT RC 1105AS	A	2729	05						
	LT SI 7145AS	A	0477	05	INSTALLED					
	LT SI 7145BS	A	0478	05	INSTALLED					
	LT WM 6705AS	A	0468	05	INSTALLED					
	LT WM 6705BS	A	0469	05	INSTALLED					
	PT CA 6755AS	A	0470	05	INSTALLED					
	PT CA 6755BS	A	0471	05	INSTALLED					
	PT MS 1115AS	A	5022	05	INSTALLED					
	PT MS 1125BS	A	5023	05	INSTALLED					
	PT RC 0104	A	0222	05	NOT INSTALLED					
	PT RC 0106	A	0223	05	NOT INSTALLED					
	PT RC 0106AS	A	0472	05	INSTALLED					
	PT RC 0106BS	A	0473	05	INSTALLED					
	PT RC 0110S	A	0474	05	INSTALLED					
	PT RC 9120AS	A	0475	05	INSTALLED					
	PT RC 9120BS	A	0476	05	INSTALLED					

A/E: EBAICO SERVICES INC.
UTILITY: LOUISIANA POWER & LIGHT

FACILITY: WATERFORD SES #3
INDEX OF QUALIFICATION STATUS/PUNCHLIST ITEMS

NSSS: COMBUSTION ENG.
CAPACITY: 1165 MW(E)

PAGE- 27

DOCUM. PACKAGE	TAG/ITEM REF#	Q588 CAT	QDEF NO	REV #	REMARKS	STATUS	WORK ITEM DESCRIPTION	SCHEDULE DATE	RESPONSIBLE	PRIORITY
8.3W3	RD-HV-5209	A	2158	05	NOT INSTALLED	QUALIFIED-AWAITING CONFIRMATORY DATA	1. FIELD VERIFICATION. (2158,2159).	TO ADVISE	P MERRITT	
8.3W3	RD-HV-5210	A	2159	05	NOT INSTALLED					
	RD-CA-5400 AS	A	1623	05	INSTALLED	QUALIFIED-WITHOUT EXCEPTION				
	RD-CA-5400 BS	A	1625	05	INSTALLED					
	RD-HV-0110	A	1621	05	INSTALLED					
	RD-HV-3024S	A	1600	05	INSTALLED					
	RD-HV-3025S	A	1601	05	INSTALLED					
	RD-HV-3026S	A	1602	05	INSTALLED					
	RD-HV-3027S	A	1603	05	INSTALLED					
	RD-HV-5201	A	2151	05	INSTALLED					
	RD-HV-5202	A	2152	05	INSTALLED					
	RE-CA-5400 AS	A	1624	05	INSTALLED					
	RE-CA-5400 BS	A	1626	05	INSTALLED					
	RE-HV-0110	A	1620	05	INSTALLED					
	RE-HV-5024S	A	1604	05	INSTALLED					
	RE-HV-5025S	A	1605	05	INSTALLED					
	RE-HV-5026S	A	1606	05	INSTALLED					
	RE-HV-5027S	A	1607	05	INSTALLED					
	RE-MS-5500 A	A	1628	05	INSTALLED					
	RE-MS-5500 B	A	1627	05	INSTALLED					
	SAMPLING COND.	A	1622	05	INSTALLED					

SORT TYPE:PKG,STAT

GLOBAL REV# 5 02/06/84

A/E: EBASCO SERVICES INC.
UTILITY: LOUISIANA POWER & LIGHT

FACILITY: WATERFORD SEF #3
INDEX OF QUALIFICATION STATUS/PUNCHLIST ITEMS

NSSS: COMBUSTION ENG.
CAPACITY: 1165 MW(E)

PAGE- 28

DOCUM. PACKAGE	TAG/ITEM REF#	OSB8 CAT	QDEF NO	REV #	REMARKS	STATUS	WORK ITEM DESCRIPTION	SCHEDULE DATE	RESPONSIBLE	PRI RITY
8.4W3	EX-CORE	A	5505	05	INSTALLED	QUALIFIED-FOR INTERIM OPERATION	1. FILE TO BE CREATED. 2. JUSTIFICATION FOR INTERIM OPERATION MUST BE PREPARED.	06/30/84 02/15/84	APPLIED PHYSICS W SNEDAKER M LEON	

SORT TYPE:PKG,STAT

GLOBAL REV# 5 02/06/84

DOCUM. PACKAGE	TAG/ITEM REF#	0588 CAT	QDEF NO	REV #	REMARKS	STATUS	WORK ITEM DESCRIPTION	SCHEDULE DATE	RESPONSIBLE	PRIO RITY
9.1W3	2BM-F109A/B	A	1124	05	INSTALLED	QUALIFIED-WITHOUT EXCEPTION	1. FILE COMPLETE IN ALL ASPECTS			
	2BM-F109A/B	A	1125	05	INSTALLED					
	2CC-F154A1	A	1085	05	INSTALLED					
	2CC-F154A1	A	1086	05	INSTALLED					
	2CC-F155A2	A	1088	05	INSTALLED					
	2CC-F155A2	A	1089	05	INSTALLED					
	2CC-F156B1	A	1091	05	INSTALLED					
	2CC-F156B1	A	1092	05	INSTALLED					
	2CC-F157B2	A	1094	05	INSTALLED					
	2CC-F157B2	A	1096	05	INSTALLED					
	2CC-F158 A1	A	1043	05	INSTALLED					
	2CC-F158A1	A	1098	05	INSTALLED					
	2CC-F159A2	A	1046	05	INSTALLED					
	2CC-F159A2	A	1045	05	INSTALLED					
	2CC-F160B1	A	1049	05	INSTALLED					
	2CC-F160B1	A	1048	05	INSTALLED					
	2CC-F161B2	A	1112	05	INSTALLED					
	2CC-F161B2	A	1051	05	INSTALLED					
	3AC-B138A	A	1199	05	INSTALLED					
	3AC-B139B	A	1200	05	INSTALLED					
	3AC-F135B	A	1194	05	INSTALLED					
	3AC-F135B	A	1193	05	INSTALLED					
	3AC-F136A	A	1196	05	INSTALLED					
	3AC-F136A	A	1197	05	INSTALLED					
	3AC-F142A	A	1201	05	INSTALLED					
	3AC-F143B	A	1203	05	INSTALLED					
	3AC-F144A	A	1206	05	INSTALLED					
	3AC-F144A	A	1205	05	INSTALLED					
	3AC-F149A	A	1208	05	INSTALLED					
	3AC-F150B	A	1210	05	INSTALLED					
	3AC-F151B	A	1214	05	INSTALLED					
	3AC-F151B	A	1212	05	INSTALLED					
	3CC-F120A	A	1240	05	INSTALLED					
	3CC-F121B	A	1243	05	INSTALLED					
	3CC-F122A	A	1245	05	INSTALLED					
	3CC-F130 A	A	1095	05	INSTALLED					
	3CC-F130A	A	1070	05	INSTALLED					
	3CC-F131B	A	1073	05	INSTALLED					
	3CC-F131B	A	1072	05	INSTALLED					
	3CC-F132A/B	A	1249	05	INSTALLED					
	3CC-F133 A/B	A	1251	05	INSTALLED					
	3CC-TM148A	A	1081	05	INSTALLED					
	3CC-TM149B	A	1083	05	INSTALLED					
	3CC-TM169 A/B	A	1053	05	INSTALLED					
	3HV-B175A	A	0936	05	INSTALLED					
	3HV-B176B	A	0938	05	INSTALLED					
	3HV-B210A	A	1007	05	INSTALLED					

A/E: EBASCO SERVICES INC.
UTILITY: LOUISIANA POWER & LIGHT

FACILITY: WATERFORD SES #3
INDEX OF QUALIFICATION STATUS/PUNCHLIST ITEMS

NSSS: COMBUSTION ENG.
CAPACITY: 1165 MW(E)

PAGE- 30

DOCUM. PACKAGE	TAG/ITEM REF#	0588 CAT	QDEF NO	REV #	REMARKS	STATUS	WORK ITEM DESCRIPTION	SCHEDULE DATE	RESPONSIBLE	PRIO RITY
9.1M3	3HV-B210A	A	1008	05	INSTALLED	REPLACE	2. FIELD VERIFICATION	TO ADVISE	P. HERRITT	
	3HV-B215B	A	1010	05	INSTALLED					
	3HV-B215B	A	1011	05	INSTALLED					
	3HV-B216A	A	1015	05	INSTALLED					
	3HV-B216A	A	1013	05	INSTALLED					
	3HV-B217B	A	1016	05	INSTALLED					
	3HV-B218A	A	1018	05	INSTALLED					
	3HV-B223B	A	1020	05	INSTALLED					
	3HV-B224A	A	1022	05	INSTALLED					
	3HV-B225B	A	1024	05	INSTALLED					
	3HV-B226A	A	1026	05	INSTALLED					
	3HV-B227B	A	1028	05	INSTALLED					
	2CC-F146 A/B	A	1075	05	INSTALLED					
	2CC-F146 A/B	A	1076	05	INSTALLED					
	2CC-F147 A/B	A	1079	05	INSTALLED					
	2CC-F147 A/B	A	1078	05	INSTALLED					
	2HV-B187B	A	0940	05	INSTALLED					
	2HV-B188A	A	0941	05	INSTALLED					
	2HV-B189A	A	0944	05	INSTALLED					
	2HV-B190A	A	0946	05	INSTALLED					
	2HV-B191B	A	0948	05	INSTALLED					
	2HV-B192B	A	0950	05	INSTALLED					
	2HV-B193 A/B	A	0995	05	INSTALLED					
	2HV-B194A	A	0996	05	INSTALLED					
	2HV-B195 B	A	0998	05	INSTALLED					
	2SI-FM317A	A	2118	05	INSTALLED					
	2SI-FM348B	A	2119	05	INSTALLED					
	3CH-F117A/B	A	2134	05	INSTALLED					
	3CH-F170A	A	2132	05	INSTALLED					
	3CH-F171B	A	2133	05	INSTALLED					

SORT TYPE:PKG,STAT

GLOBAL REV# 5 02/06/84

A/E: EBASCO SERVICES INC.
UTILITY: LOUISIANA POWER & LIGHT

FACILITY: WATERFORD SES #3
INDEX OF QUALIFICATION STATUS/PUNCHLIST ITEMS

NSSS: COMBUSTION ENG.
CAPACITY: 1565 MW(E)

PAGE- 31

DOCUM. PACKAGE	TAG/ITEM REF#	Q588 CAT	QDEF NO	REV #	REMARKS	STATUS	WORK ITEM DESCRIPTION	SCHEDULE DATE	RESPONSIBLE	PRI ORITY
9.2W3	1SI-V1501B	A	0999	05		QUALIFIED-AWAITING CONFIRMATORY DATA	1. GET FIELD VERIFICATION SHEETS.	TO ADVISE	P HERRITT	
9.2W3	1SI-V1501B D-69(SA)	A	0997 0945	05 05	INSTALLED	QUALIFIED-WITHOUT EXCEPTION				
	D-69(SA)	A	0958	05	INSTALLED					
	D-70(SB)	A	0947	05	INSTALLED					
	D-70(SB)	A	0961	05	INSTALLED					
	1CH-F2501 A/B	A	0813	05	INSTALLED					
	1SI-V1503A	A	0976	05	INSTALLED					
	1SI-V1503A	A	0977	05	INSTALLED					
	1SI-V2504	A	0921	05	INSTALLED					
	1SI-V2505	A	0974	05	INSTALLED					
	2BD-F603	A	0828	05	INSTALLED					
	2BD-F603	A	0829	05	INSTALLED					
	2BD-F604	A	0824	05	INSTALLED					
	2BD-F604	A	0823	05	INSTALLED					
	2BD-F605	A	0832	05	INSTALLED					
	2BD-F605	A	0831	05	INSTALLED					
	2BD-F605	A	0825	05	INSTALLED					
	2BD-F606	A	0826	05	INSTALLED					
	2CC-F243 A/B	A	1062	05	INSTALLED					
	2CH-F1512A/B	A	0803	05	INSTALLED					
	2CH-F1513 A/B	A	0805	05	INSTALLED					
	2CH-F1518 A/B	A	0807	05	INSTALLED					
	2CH-F1529A/B	A	0809	05	INSTALLED					
	2CS-F305A	A	0906	05	INSTALLED					
	2CS-F306B	A	0908	05	INSTALLED					
	2FP-F127	A	1039	05	INSTALLED					
	2FP-F129	A	1041	05	INSTALLED					
	2HV-B151A	A	0942	05	INSTALLED					
	2HV-B151A	A	0910	05	INSTALLED					
	2HV-B152A	A	0912	05	INSTALLED					
	2HV-B152A	A	0901	05	INSTALLED					
	2HV-B153B	A	0914	05	INSTALLED					
	2HV-B153B	A	0903	05	INSTALLED					
	2HV-B154B	A	0915	05	INSTALLED					
	2HV-B155A	A	0917	05	INSTALLED					
	2HV-B156A	A	0943	05	INSTALLED					
	2HV-B156A	A	0919	05	INSTALLED					
	2HV-B157B	A	0922	05	INSTALLED					
	2IA-F601 A/B	A	1104	05	INSTALLED					
	2NG-F604	A	1101	05	INSTALLED					
	2SE-F1561 A/B	A	0975	05	INSTALLED					
	2SI-F605TK1A	A	1148	05	INSTALLED					
	2SI-F606TK1B	A	1150	05	INSTALLED					

SORT TYPE:PKG,STAT

GLOBAL REV# 5 02/06/84

A/E: EBASCO SERVICES INC.
UTILITY: LOUISIANA POWER & LIGHT

FACILITY: WATERFORD SES #3
INDEX OF QUALIFICATION STATUS/PUNCHLIST ITEMS

NSSS: COMBUSTION ENG.
CAPACITY: 1165 MW(E)

PAGE- 32

DOCUM. PACKAGE	TAG/ITEM REF#	0588 CAT	QDEF NO	REV #	REMARKS	STATUS	WORK ITEM DESCRIPTION	SCHEDULE DATE	RESPONSIBLE	PRIORITY
9.2W3	2SI-F607TK2A	A	1152	05	INSTALLED					
	2SI-F608TK2B	A	1154	05	INSTALLED					
	2SI-L101A	A	1127	05	INSTALLED					
	2SI-L102B	A	1130	05	INSTALLED					
	2SI-L103A	A	0973	05	INSTALLED					
	2SI-L104B	A	0972	05	INSTALLED					
	2SI-L104B	A	0949	05	INSTALLED					
	2SL-F1501A/B	A	0843	05	INSTALLED					
	2SL-F1502 A/B	A	0844	05	INSTALLED					
	2SL-F1503A/B	A	0845	05	INSTALLED					
	2SL-F1504 A/B	A	1166	05	INSTALLED					
	2SL-F1505 A/B	A	1168	05	INSTALLED					
	2SL-F1506 A/B	A	1170	05	INSTALLED					
	2SL-F601	A	0846	05	INSTALLED					
	2SL-F602	A	1172	05	INSTALLED					
	2SL-F603	A	0848	05	INSTALLED					
	2SL-F604	A	1174	05	INSTALLED					
	2WM-F104A/B	A	0839	05	INSTALLED					
	2WM-F105A/B	A	0900	05	INSTALLED					
	2WM-F157A/B	A	0841	05	INSTALLED					
	2WM-F158A/B	A	0904	05	INSTALLED					
	3AC-F623A	A	1222	05	INSTALLED					
	3AC-F625B	A	1224	05	INSTALLED					
	3AC-F627A	A	1226	05	INSTALLED					
	3AC-F629B	A	1228	05	INSTALLED					
	3AC-TM635B	A	1230	05	INSTALLED					
	3AC-TM637A	A	1232	05	INSTALLED					
	3AC-TM639B	A	1234	05	INSTALLED					
	3AC-V601A	A	1215	05						
	3AC-V602B	A	1216	05						
	3CC-F123B	A	1247	05	INSTALLED					
	3CC-F240 A	A	1057	05	INSTALLED					
	3CC-F240 A	A	1056	05	INSTALLED					
	3CC-F241 B	A	1059	05	INSTALLED					
	3CC-F241 B	A	1060	05	INSTALLED					
	3CH-F175 A/B	A	0811	05	INSTALLED					
	1CH-F1516A/B	A	2136	05	INSTALLED	REPLACE				
	1SI-F1551TK1A	A	2120	05	INSTALLED					
	1SI-F1552TK1B	A	2149	05	INSTALLED					
	1SI-F1553TK2A	A	2121	05	INSTALLED					
	1SI-F1554TK2B	A	2117	05	INSTALLED					
	2BM-F108 A/B	A	0801	05	INSTALLED					
	2BM-F108 A/B	A	0802	05	INSTALLED					
	2WM-F104 A/B	A	0838	05	INSTALLED					
	2WM-F157A/B	A	0840	05	INSTALLED					

SORT TYPE:PKG,STAT

GLOBAL REV# 5 02/06/84

A/E: EBA&CO SERVICES INC.
UTILITY: LOUISIANA POWER & LIGHT

FACILITY: WATERFORD SES #3
INDEX OF QUALIFICATION STATUS/PUNCHLIST ITEMS

NSSS: COMBUCTION ENG.
CAPACITY: 1165 MW(E)

PAGE- 33

DOCHN. PACKAGE	TAG/ITEM REF#	0588 CAT	QDEF NO	REV #	REMARKS	STATUS	WORK ITEM DESCRIPTION	SCHEDULE DATE	RESPONSIBLE	PRIORITY
13.1W3	H2 ANALYZER	A	0702	05	INSTALLED	QUALIFIED-WITHOUT EXCEPTION	1.FIELD VERIFICATION OF MOTORS	TO ADVISE	P MERRITT	
	H2 ANALYZER 48B	A	0703	05	INSTALLED					
	H2 ANLR SAMPLE	A	0704	05						
	H2 ANLR SAMPLE	A	0705	05						

SORT TYPE:PKG,STAT

GLOBAL REV# 5 02/06/84

A/E: EBASCO SERVICES INC.
UTILITY: LOUISIANA POWER & LIGHT

FACILITY: WATERFORD SES #3
INDEX OF QUALIFICATION STATUS/PUNCHLIST ITEMS

NSSS: COMBUSTION ENG.
CAPACITY: 1165 MW(E)

PAGE- 34

DOCUM. PACKAGE	TAG/ITEM REF#	0588 CAT	QDEF NO	REV #	REMARKS	STATUS	WORK ITEM DESCRIPTION	SCHEDULE DATE	RESPONSIBLE	PRIORITY
14.1W3	CABLE ASSEMBL.	A	0620	05	INSTALLED	QUALIFIED-WITHOUT EXCEPTION	1. FILE COMPLETE IN ALL ASPECTS			
	CABLE ASSEMBLY	A	0616	05	INSTALLED					

SORT TYPE:PKG,STAT

GLOBAL REV# 5 02/06/84

A/E: EHASCO SERVICES INC.
UTILITY: LOUISIANA POWER & LIGHT

FACILITY: WATERFORD SES #3
INDEX OF QUALIFICATION STATUS/PUNCHLIST ITEMS

NSSS: COMBUSTION ENG.
CAPACITY: 1165 MW(E)

PAGE- 35

DOCUM. PACKAGE	TAG/ITEM REF#	0588 CAT	QDEF NO	REV #	REMARKS	STATUS	WORK ITEM DESCRIPTION	SCHEDULE DATE	RESPONSIBLE	PRIO RITY
15.1W3	PEN 122	A	0725	05	INSTALLED	QUALIFIED-AWAITING CONFIRMATORY DATA	1. FILE TO BE UPDATED WITH PEN. FEEDTHRU'S FOR EX-CORE MONITORING EQUIPMENT.	02/15/84	A DEVITO	
15.1W3	PEN 124	A	0726	05	INSTALLED					
	PEN-101	A	0613	05	INSTALLED	QUALIFIED-WITHOUT EXCEPTION				
	PEN-102	A	0679	05	INSTALLED					
	PEN-104	A	0680	05	INSTALLED					
	PEN-106	A	0681	05	INSTALLED					
	PEN-107	A	0621	05	INSTALLED					
	PEN-108	A	0682	05	INSTALLED					
	PEN-109	A	0689	05	INSTALLED					
	PEN-110	A	0690	05	INSTALLED					
	PEN-111	A	0691	05	INSTALLED					
	PEN-112	A	0692	05	INSTALLED					
	PEN-113	A	0622	05	INSTALLED					
	PEN-116	A	0623	05	INSTALLED					
	PEN-117	A	0624	05	INSTALLED					
	PEN-118	A	0625	05	INSTALLED					
	PEN-119	A	0626	05	INSTALLED					
	PEN-120	A	0627	05	INSTALLED					
	PEN-121	A	0628	05	INSTALLED					
	PEN-122	A	0629	05	INSTALLED					
	PEN-123	A	0630	05	INSTALLED					
	PEN-124	A	0631	05	INSTALLED					
	PEN-125	A	0647	05	INSTALLED					
	PEN-126	A	0683	05	INSTALLED					
	PEN-127	A	0632	05	INSTALLED					
	PEN-130	A	0696	05	INSTALLED					
	PEN-133	A	0633	05	INSTALLED					
	PEN-134	A	0634	05	INSTALLED					
	PEN-135	A	0635	05	INSTALLED					
	PEN-136	A	0636	05	INSTALLED					
	PEN-137	A	0641	05	INSTALLED					
	PEN-138	A	0685	05	INSTALLED					
	PEN-139	A	0642	05	INSTALLED					
	PEN-140	A	0643	05	INSTALLED					
	PEN-141	A	0637	05	INSTALLED					
	PEN-142	A	0638	05	INSTALLED					
	PEN-143	A	0639	05	INSTALLED					
	PEN-144	A	0644	05	INSTALLED					
	PEN-145	A	0645	05	INSTALLED					
	PEN-146	A	0646	05	INSTALLED					
	PEN-147	A	0697	05	INSTALLED					
	PEN-148	A	0640	05	INSTALLED					
	PEN-149	A	0686	05	INSTALLED					
	PEN-151	A	0688	05	INSTALLED					

SORT TYPE:PKG,STAT

GLOBAL REV# 5 02/06/84

A/E: EBASCO SERVICES INC.
UTILITY: LOUISIANA POWER & LIGHT

FACILITY: WATERFORD SEC #3
INDEX OF QUALIFICATION STATUS/PUNCHLIST ITEMS

NSSS: COMBUSTION ENG.
CAPACITY: 1165 MW(E)

PAGE- 36

DOCUM.	TAG/ITEM	0588	QDEF	REV	REMARKS	STATUS	WORK ITEM	SCHEDULE	RESPONSIBLE	PRIORITY
PACKAGE	REF#	CAT	NO	#			DESCRIPTION	DATE		

SORT TYPE:PKG,STAT

GLOBAL REV# 5 02/06/84

A/E: EBASCO SERVICES INC.
UTILITY: LOUISIANA POWER & LIGHT

FACILITY: WATERFORD SES #3
INDEX OF QUALIFICATION STATUS/PUNCHLIST ITEMS

NSSS: COMBUSTION ENG.
CAPACITY: 1165 MW(E)

PAGE- 37

DOCUM. PACKAGE	TAG/ITEM REF#	0588 CAT	QDEF NO	REV #	REMARKS	STATUS	WORK ITEM DESCRIPTION	SCHEDULE DATE	RESPONSIBLE	PRIORITY
16.1W3	WCSF-N SPLICE	A	0604	05	INSTALLED	QUALIFIED-WITHOUT EXCEPTION	1. FILE COMPLETE IN ALL ASPECTS			

SORT TYPE:PKG, STAT

GLOBAL REV# 5 02/06/84

A/E: EBASCO SERVICES INC.
UTILITY: LOUISIANA POWER & LIGHT

FACILITY: WATERFORD SES #3
INDEX OF QUALIFICATION STATUS/PUNCHLIST ITEMS

NSSS: COMBUSTION ENG.
CAPACITY: 1165 MW(E)

PAGE- 38

DOCUM. PACKAGE	TAG/ITEM REF#	0588 QDEF REV			REMARKS	STATUS	WORK ITEM DESCRIPTION	SCHEDULE DATE	RESPONSIBLE	PRIORITY
		CAT	NO	#						
16.2W3	SPLICES T-95+	A	0606	05	INSTALLED	QUALIFIED-WITHOUT EXCEPTION	1. FILE COMPLETE IN ALL ASPECTS			

SORT TYPE: PKG, STAT

GLOBAL REV# 5 02/06/84

A/E: EBASCO SERVICES INC.
UTILITY: LOUISIANA POWER & LIGHT

FACILITY: WATERFORD SES #3
INDEX OF QUALIFICATION STATUS/PUNCHLIST ITEMS

NSSS: COMBUSTION ENG.
CAPACITY: 1165 MW(E)

PAGE- 39

DOCUM. PACKAGE	TAG/ITEM REF#	Q588 CAT	QDEF NO	REV #	REMARKS	STATUS	WORK ITEM DESCRIPTION	SCHEDULE DATE	RESPONSIBLE	PRI RITY
17.2W3	B30200-SA	A	3089	05	INSTALLED	QUALIFIED-WITHOUT EXCEPTION	1. FILE COMPLETE IN ALL ASPECTS			
	B30483-SA	A	3087	05	INSTALLED					
	B3075 -SB	A	5250	05	INSTALLED					
	B3523-SA	A	5252	05	INSTALLED					
	B3678 -SB	A	3352	05	INSTALLED					
	B3823-SA	A	3020	05	INSTALLED					
	B3824-SB	A	3019	05	INSTALLED					
	B3841-SA	A	5253	05	INSTALLED					
	B3842-SA	A	5254	05	INSTALLED					
	B3891-SA	A	3597	05	INSTALLED					
	B3986-SB	A	5261	05	INSTALLED					

SORT TYPE:PKG,STAT

GLOBAL REV# 5 02/06/84

A/E: EBASCO SERVICES INC.
UTILITY: LOUISIANA POWER & LIGHT

FACILITY: WATERFORD SES #3
INDEX OF QUALIFICATION STATUS/PUNCHLIST ITEMS

NSSS: COMBUSTION ENG.
CAPACITY: 1145 MW(E)

PAGE- 40

DOCUM. PACKAGE	TAG/ITEM REF#	0588 CAT	QDEF NO	REV #	REMARKS	STATUS	WORK ITEM DESCRIPTION	SCHEDULE DATE	RESPONSIBLE	PRIORITY
30.1W3	3CC-TM169A/B	A	1113	05	INSTALLED	REPLACE	1. FIELD VERIFICATION.	TO ADVISE	P HERRITT	

SGRT TYPE: PKG, STAT

GLOBAL REV# 5 02/06/84

A/E: EBASCO SERVICES INC.
UTILITY: LOUISIANA POWER & LIGHT

FACILITY: WATERFORD SES #3
INDEX OF QUALIFICATION STATUS/PUNCHLIST ITEMS

NSSS: COMBUSTION ENG.
CAPACITY: 1165 MW(E)

PAGE- 41

DOCUM. PACKAGE	TAG/ITEM REF#	OS88 CAT	QDEF NO	REV #	REMARKS	STATUS	WORK ITEM DESCRIPTION	SCHEDULE DATE	RESPONSIBLE	PRIORITY
35.1W3	2HA-E601A	A	0962	05		QUALIFIED-AWAITING CONFIRMATORY DATA	1. GET THE MISSING FIELD VERIFICATION SHEETS FROM THE SITE (TAB H)	TO ADVISE	P MERRITT	
	2HA-E602A	A	0963	05						
	2HA-E633A	A	0971	05						
	3AC-E611A	A	1217	05						
	3AC-E612B	A	1218	05						
	3AC-E613A/B	A	1219	05						
35.1W3	2HA-E603A	A	0925	05	INSTALLED	QUALIFIED-WITHOUT EXCEPTION				
	2HA-E604A	A	0953	05	INSTALLED					
	2HA-E605A	A	0955	05	INSTALLED					
	2HA-E606A	A	0964	05	INSTALLED					
	2HA-E607A	A	0965	05	INSTALLED					
	2HA-E608A	A	0967	05	INSTALLED					
	2HA-E609A	A	0966	05	INSTALLED					
	2HA-E610A	A	0969	05	INSTALLED					
	2HA-E621B	A	0968	05	INSTALLED					
	2HA-E622B	A	0970	05	INSTALLED					
	2HA-E623B	A	1000	05	INSTALLED					
	2HA-E624B	A	1117	05	INSTALLED					
	2HA-E625B	A	1118	05	INSTALLED					
	2HA-E626B	A	1119	05	INSTALLED					
	2HA-E627B	A	1120	05	INSTALLED					
	2HA-E628B	A	1134	05	INSTALLED					
	2HA-E629B	A	1135	05	INSTALLED					
	2HA-E630B	A	1136	05	INSTALLED					
	2HA-E634B	A	1177	05	INSTALLED					
	2SI-E632	A	1155	05	INSTALLED					
	2SI-E633	A	1156	05	INSTALLED					
	2SI-E634	A	1157	05	INSTALLED					
	2SI-E635	A	1158	05	INSTALLED					
	2SI-E636	A	1159	05	INSTALLED					
	2SI-E637	A	1160	05	INSTALLED					
	2SI-E638	A	1161	05	INSTALLED					
	2SI-E639	A	1162	05	INSTALLED					

SORT TYPE: PKG, STAT

GLOBAL REV# 5 02/06/84

A/E: EBASCO SERVICES INC.
UTILITY: LOUISIANA POWER & LIGHT

FACILITY: WATERFORD SES #3
INDEX OF QUALIFICATION STATUS/PUNCHLIST ITEMS

NSSS: COMBUSTION ENG.
CAPACITY: 1165 MW(E)

PAGE- 42

DOCUM. PACKAGE	TAG/ITEM REF#	0588 CAT	QDEF NO	REV #	REMARKS	STATUS	WORK ITEM DESCRIPTION	SCHEDULE DATE	RESPONSIF P	PRIORITY
35.6W3	1CH-E2505B	A	0818	5B	INSTALLED	QUALIFIED WITHOUT EXCEPTION				
35.6W3	2HA-E642	A	5325	5B		QUALIFIED-AWAITING CONFIRMATORY DATA	1. FIELD VERIFICATION (5326- 5329).	TO ADVISE	P MERRITT	
	2HA-E643	A	5326	5B						
	2HA-E644	A	5327	5B						
	2SI-E654	A	5328	5B						
	2SI-E655	A	5329	5B						
35.6W3	1CH-E2503A	A	0815	05	INSTALLED	QUALIFIED-WITHOUT EXCEPTION				
	1CH-E2504B	A	0816	00	INSTALLED					
	1CH-E2505A	A	0817	5B	INSTALLED					
	2RC-E2557B	A	1106	5B	INSTALLED					
	2RC-E2558B	A	1107	5B	INSTALLED					
	2RC-E2559A	A	1108	5B	INSTALLED					
	2RC-E2560B	A	1109	5B	INSTALLED					
	2RC-E2561A	A	1110	5B	INSTALLED					
	2RC-E2562B	A	1111	5B	INSTALLED					
	2SI-E1587A	A	0984	5B	INSTALLED					
	2SI-E1588B	A	0985	5B	INSTALLED					
	3NG-E671-3	A	0852	5B	INSTALLED					
	3NG-E671-4	A	0853	5B	INSTALLED					

SORT TYPE:PKG,STAT

GLOBAL REV# 5 02/06/84

A/E: ERASCO SERVICES INC.
UTILITY: LOUISIANA POWER & LIGHT

FACILITY: WATERFORD SES #3
INDEX OF QUALIFICATION STATUS/PUNCHLIST ITEMS

NSSS: COMBUSTION ENG.
CAPACITY: 1165 MW(E)

PAGE- 43

DOCUM. PACKAGE	TAG/ITEM REF#	0588 CAT	QDEF NO	REV #	REMARKS	STATUS	WORK ITEM DESCRIPTION	SCHEDULE DATE	RESPONSIBLE	PRIO RITY
36.1W3	PS SI 3148AS	A	2062	05	INSTALLED	QUALIFIED	1. FILE COMPLETE IN ALL ASPECTS			
	PS SI 3148BS	A	2063	05	INSTALLED					
	PS SI 3149AS	A	2064	05	INSTALLED					
	DPIS HV 5051AS	A	0418	05	INSTALLED					
	DPIS HV 5051BS	A	0419	05	INSTALLED					
	DPIS HV 5220AS	A	0420	05	INSTALLED					
	DPIS HV 5221AS	A	0422	05	INSTALLED					
	DPIS HV5257AS	A	0424	05	INSTALLED					
	DPIS HV5257BS	A	0425	05	INSTALLED					
	FIS AC 5030AS	A	0400	05	INSTALLED					
	FIS AC 5030BS	A	0401	05	INSTALLED					
	FIS AC 5030CS	A	0402	05	INSTALLED					
	FIS AC 5040AS	A	3003	05	INSTALLED					
	FIS AC 5040BS	A	4695	05	INSTALLED					
	FIS CC 5070AS	A	0403	05	INSTALLED					
	FIS CC 5070BS	A	0404	05	INSTALLED					
	FIS CC 5070CS	A	0405	05	INSTALLED					
	FIS FW 8330AS	A	0414	05	INSTALLED					
	FIS FW 8330BS	A	0415	05	INSTALLED					
	FIS FW 8331AS	A	0416	05	INSTALLED					
	FIS FW 8331BS	A	0417	05	INSTALLED					
	PIS-CH-0206	A	5503	05	INSTALLED					
	PIS-CH-0208	A	5504	05	INSTALLED					
	PS SI 3149BS	A	2065	05	INSTALLED					

SORT TYPE:PKG,STAT

GLOBAL REV# 5 02/06/84

A/E: EBASCO SERVICES INC.
UTILITY: LOUISIANA POWER & LIGHT

FACILITY: WATERFORD SES #3
INDEX OF QUALIFICATION STATUS/PUNCHLIST ITEMS

NSSS: COMBUSTION ENG.
CAPACITY: 1165 MW(E)

PAGE- 44

DOCUM. PACKAGE	TAG/ITEM REF#	Q588 CAT	QDEF NO	REV #	REMARKS	STATUS	WORK ITEM DESCRIPTION	SCHEDULE DATE	RESPONSIBLE	PRIORITY
36.5W3	LS WM 6790AS	A	0350	05	INSTALLED	QUALIFIED	1. FILE COMPLETE IN ALL ASPECTS			
	LS WM 6790BS	A	0351	05	INSTALLED					
	LS WM 6791AS	A	0352	05	INSTALLED					
	LS WM 6791BS	A	0353	05	INSTALLED					
	LS WM 6792AS	A	0354	05	INSTALLED					
	LS WM 6792BS	A	0355	05	INSTALLED					

SORT TYPE:PKG,STAT

GLOBAL REV# 5 02/06/84

A/E: EBASCO SERVICES INC.
UTILITY: LOUISIANA POWER & LIGHT

FACILITY: WATERFORD SES #3
INDEX OF QUALIFICATION STATUS/PUNCHLIST ITEMS

NSSS: COMBUSTION ENG.
CAPACITY: 1165 MW(E)

PAGE- 45

DOCUM. PACKAGE	TAG/ITEM REF#	0588 CAT	QDEF NO	REV #	REMARKS	STATUS	WORK ITEM DESCRIPTION	SCHEDULE DATE	RESPONSIBLE	PRIORITY
38.1W3	SAC-TM615A	A	1220	05	INSTALLED	REPLACE	1. FIELD VERIFICATION.	TO ADVISE	P MERRITT	
	SAC-TM617B	A	1221	05	INSTALLED					

SORT TYPE:PKG,STAT

GLOBAL REV# 5 02/06/84

DOCUM. PACKAGE	TAG/ITEM REF#	0588 CAT	QDEF MO	REV #	REMARKS	STATUS	WORK ITEM DESCRIPTION	SCHEDULE DATE	RESPONSIBLE	PRIORITY
39.2W3	TE AC 5010AS	A	0536	SA	INSTALLED	QUALIFIED-WITHOUT EXCEPTION	1. FILE COMPLETE IN ALL ASPECTS			
	TE AC 5010BS	A	0556	SA	INSTALLED					
	TE AC 5010CS	A	0557	SA	INSTALLED					
	TE AC 5022AS	A	0537	SA	INSTALLED					
	TE AC 5022BS	A	0558	SA	INSTALLED					
	TE AC 5022CS	A	0559	SA	INSTALLED					
	TE CC 5062AS	A	0538	SA	INSTALLED					
	TE CC 5062BS	A	0560	SA	INSTALLED					
	TE CC 5062CS	A	0561	SA	INSTALLED					
	TE CC 5070AS	A	0539	SA	INSTALLED					
	TE CC 5070BS	A	0562	SA	INSTALLED					
	TE CC 5070CS	A	0563	SA	INSTALLED					
	TE CC 7560A1S	A	0528	SA	INSTALLED					
	TE CC 7560A2S	A	0529	SA	INSTALLED					
	TE CC 7560B1S	A	0530	SA	INSTALLED					
	TE CC 7560B2S	A	0531	SA	INSTALLED					
	TE CC 7570A1S	A	0532	SA	INSTALLED					
	TE CC 7570A2S	A	0533	SA	INSTALLED					
	TE CC 7570B1S	A	0534	SA	INSTALLED					
	TE CC 7570B2S	A	0535	SA	INSTALLED					
	TE HV 5002AS	A	0526	SA	INSTALLED					
	TE HV 5002BS	A	0552	SA	INSTALLED					
	TE HV 5003AS	A	0527	SA	INSTALLED					
	TE HV 5003BS	A	0553	SA	INSTALLED					
	TE HV 5003CS	A	0554	SA	INSTALLED					
	TE HV 5003DS	A	0555	SA	INSTALLED					
	TE HV 5005BS	A	0525	SA	INSTALLED					
	TE HV 5010AS	A	0524	SA	INSTALLED					
	TE HV 5010BS	A	0551	SA	INSTALLED					
	TE HV 5024AS	A	0522	SA	INSTALLED					
	TE HV 5024BS	A	0549	SA	INSTALLED					
	TE HV 5025AS	A	0523	SA	INSTALLED					
	TE HV 5025BS	A	0550	SA	INSTALLED					
	TE HV 5048AS	A	0519	SA	INSTALLED					
	TE HV 5048BS	A	0520	SA	INSTALLED					
	TE HV 5054AS	A	0521	SA	INSTALLED					
	TE HV 5054BS	A	0548	SA	INSTALLED					
	TE HV 5100AS	A	0503	SA	INSTALLED					
	TE HV 5100BS	A	0544	SA	INSTALLED					
	TE HV 5101AS	A	0504	SA	INSTALLED					
	TE HV 5101BS	A	0545	SA	INSTALLED					
	TE HV 5102AS	A	0505	SA	INSTALLED					
	TE HV 5102BS	A	0546	SA	INSTALLED					
	TE HV 5103AS	A	0506	SA	INSTALLED					
	TE HV 5103BS	A	0547	SA	INSTALLED					
	TE HV 5150.1AS	A	0507	SA	INSTALLED					
	TE HV 5150.1BS	A	0508	SA	INSTALLED					

A/E: EBASCO SERVICES INC.
UTILITY: LOUISIANA POWER & LIGHT

FACILITY: WATERFORD SES #3
INDEX OF QUALIFICATION STATUS/PUNCHLIST ITEMS

NSSS: COMBUSTION ENG.
CAPACITY: 1165 MW(E)

PAGE- 47

DOCUM. PACKAGE	TAG/ITEM REF#	0588 CAT	QDEF NO	REV #	REMARKS	STATUS	WORK ITEM DESCRIPTION	SCHEDULE DATE	RESPONSIBLE	PRIO RITY
	TE HV 5150.2AS	A	0509	SA	INSTALLED					
	TE HV 5150.2BS	A	0510	SA	INSTALLED					
	TE HV 5152AS	A	0511	SA	INSTALLED					
	TE HV 5152BS	A	0512	SA	INSTALLED					
	TE HV 5155.1AS	A	0513	SA	INSTALLED					
	TE HV 5155.1BS	A	0514	SA	INSTALLED					
	TE HV 5155.2AS	A	0515	SA	INSTALLED					
	TE HV 5155.2BS	A	0516	SA	INSTALLED					
	TE HV 5157AS	A	0517	SA	INSTALLED					
	TE HV 5157BS	A	0518	SA	INSTALLED					
	TE HV 5250AS	A	0500	SA	INSTALLED					
	TE HV 5250BS	A	0542	SA	INSTALLED					
	TE HV 5255AS	A	0501	SA	INSTALLED					
	TE HV 5255BS	A	0543	SA	INSTALLED					
	TE MS 8345S	A	0502	SA	INSTALLED					
	TE SI 7116AS	A	0540	SA	INSTALLED					
	TE SI 7116BS	A	0541	SA	INSTALLED					

SORT TYPE:PKG,STAT

GLOBAL REV# 5 02/06/84

A/E: EBASCO SERVICES INC.
UTILITY: LOUISIANA POWER & LIGHT

FACILITY: WATERFORD SES #3
INDEX OF QUALIFICATION STATUS/PUNCHLIST ITEMS

NSSS: COMBUSTION ENG.
CAPACITY: 1165 MW(E)

PAGE- 48

DOCUM. PACKAGE	TAG/ITEM REF#	0588 CAT	QDEF NO	REV #	REMARKS	STATUS	WORK ITEM DESCRIPTION	SCHEDULE DATE	RESPONSIBLE	PRI RITY
39.3W3	TE RC 0111Y	A	5264	05		QUALIFIED-AWAITING CONFIRMATORY DATA	1. FIELD VERIFICATION FORMS TO BE COMPLETE. (2003, 2014, 2048-2049, 2051, 2011, 2053- 2055, 5264, 5265)	TO ADVISE	P MERRITT	
	TE RC 0112CD	A	2003	05	NOT INSTALLED					
	TE RC 0115	A	2054	05						
	TE RC 0122HC	A	2014	05	INSTALLED					
	TE RC 0125	A	2055	05						
	TE SI 0303X	A	2048	05	INSTALLED					
	TE SI 0303Y	A	2049	05	INSTALLED					
	TE SI 0351Y	A	2051	05	INSTALLED					
	TE SI 0352Y	A	2053	05	NOT INSTALLED					
39.3W3	TE RC 0112CC	A	2002	05	INSTALLED	QUALIFIED-WITHOUT EXCEPTION				
	TE RC 0112HC	A	2006	05	INSTALLED					
	TE RC 0112HD	A	2007	05	INSTALLED					
	TE RC 0121Y	A	5265	05						
	TE RC 0122CC	A	2010	05	INSTALLED					
	TE RC 0122CD	A	2011	05	INSTALLED					
	TE RC 0122HD	A	2015	05	INSTALLED					
	TE SI 0351X	A	2050	05	INSTALLED					
	TE SI 0352X	A	2052	05	INSTALLED					

SORT TYPE: PKG, STAT

GLOBAL REV# 5 02/06/84

A/E: EBASCO SERVICES INC.
UTILITY: LOUISIANA POWER & LIGHT

FACILITY: WATERFORD SES #3
INDEX OF QUALIFICATION STATUS/PUNCHLIST ITEMS

WSSS: COMBUSTION ENG.
CAPACITY: 1165 MW(E)

PAGE- 49

DOCUM. PACKAGE	TAG/ITEM REF#	0588 CAT	QDEF NO	REV #	REMARKS	STATUS	WORK ITEM DESCRIPTION	SCHEDULE DATE	RESPONSIBLE	PRIORITY
39.4WS	TE RC 0112CA	A	2000	05	NOT INSTALLED	QUALIFIED-AWAITING CONFIRMATORY DATA	1. FIELD VERIFICATION (ALL SHEETS)	TO ADVISE	P MERRITT	
	TE RC 0112CB	A	2001	05	NOT INSTALLED					
	TE RC 0112HA	A	2004	05	NOT INSTALLED					
	TE RC 0112HB	A	2005	05	NOT INSTALLED					
	TE RC 0122CA	A	2008	05	NOT INSTALLED					
	TE RC 0122CB	A	2009	05	NOT INSTALLED					
	TE RC 0122HA	A	2012	05	NOT INSTALLED					
	TE RC 0122HB	A	2013	05	NOT INSTALLED					

SORT TYPE: PKG, STAT

GLOBAL REV# 5 02/06/84

A/E: EBASCO SERVICES INC.
UTILITY: LOUISIANA POWER & LIGHT

FACILITY: WATERFORD SES #3
INDEX OF QUALIFICATION STATUS/PUNCHLIST ITEMS

NSSS: COMBUSTION ENG.
CAPACITY: 1165 MW(E)

PAGE- 50

DOCUM. PACKAGE	TAG/ITEM REF#	0588 CAT	0000 NO	REV #	REMARKS	STATUS	WORK ITEM DESCRIPTION	SCHEDULE DATE	RESPONSIBLE	PRIO RITY
39.5W3	TE RC 0092-E18	A	5453		INSTALLED	QUALIFIED	1. FILE COMPLETE IN ALL ASPECTS			
	TE RC 0092-E2	A	5471		INSTALLED					
	TE RC 0092-G20	A	5449		INSTALLED					
	TE RC 0092-L18	A	5447		INSTALLED					
	TE RC 0092-L20	A	5446		INSTALLED					
	TE RC 0092-R16	A	5448		INSTALLED					
	TE RC 0093-E20	A	5452		INSTALLED					
	TE RC 0093-G16	A	5454		INSTALLED					
	TE RC 0093-G18	A	5451		INSTALLED					
	TE RC 0093-L13	A	5455		INSTALLED					
	TE RC 0093-L16	A	5450		INSTALLED					
	TE RC 0093-R18	A	5445		INSTALLED					
	TE RC 0094-C16	A	5459		INSTALLED					
	TE RC 0094-C18	A	5458		INSTALLED					
	TE RC 0094-E13	A	5460		INSTALLED					
	TE RC 0094-E16	A	5457		INSTALLED					
	TE RC 0094-G13	A	5456		INSTALLED					
	TE RC 0094-G9	A	5461		INSTALLED					
	TE RC 0095-A14	A	5466		INSTALLED					
	TE RC 0095-C13	A	5463		INSTALLED					
	TE RC 0095-C9	A	5464		INSTALLED					
	TE RC 0095-E6	A	5465		INSTALLED					
	TE RC 0095-E9	A	5462		INSTALLED					
	TE RC 0096-A8	A	5468		INSTALLED					
	TE RC 0096-C4	A	5467		INSTALLED					
	TE RC 0096-C6	A	5469		INSTALLED					
	TE RC 0096-E4	A	5472		INSTALLED					
	TE RC 0096-G2	A	5470		INSTALLED					
	TE RC 0097-G4	A	5473		INSTALLED					
	TE RC 0097-G6	A	5476		INSTALLED					
	TE RC 0097-L2	A	5474		INSTALLED					
	TE RC 0097-R2	A	5477		INSTALLED					
	TE RC 0098-L4	A	5475		INSTALLED					
	TE RC 0098-L6	A	5478		INSTALLED					
	TE RC 0098-L9	A	5483		INSTALLED					
	TE RC 0098-R4	A	5479		INSTALLED					
	TE RC 0098-R6	A	5482		INSTALLED					
	TE RC 0098-T2	A	5480		INSTALLED					
	TE RC 0098-T4	A	5481		INSTALLED					
	TE RC 0099-R13	A	5489		INSTALLED					
	TE RC 0099-R9	A	5484		INSTALLED					
	TE RC 0099-T6	A	5485		INSTALLED					
	TE RC 0099-T9	A	5488		INSTALLED					
	TE RC 0099-W4	A	5486		INSTALLED					
	TE RC 0099-W6	A	5487		INSTALLED					
	TE RC 0100-T13	A	5490		INSTALLED					
	TE RC 0100-T16	A	5493		INSTALLED					

SORT TYPE: PKG, STAT

GLOBAL REV# 5 02/06/84

A/E: EPASCO SERVICES INC.
 UTILITY: LOUISIANA POWER & LIGHT

FACILITY: WATERGORD SES #3
 INDEX OF QUALIFICATION STATUS/PUNCHLIST ITEMS

NSSS: COMBUSTION ENG.
 CAPACITY: 1165 MW(E)

PAGE- 51

DOCUM. PACKAGE	TAG/ITEM REF#	0588 CAT	0000 NO	DEF REV	REMARKS	STATUS	WORK ITEM DESCRIPTION	SCHEDULE DATE	RESPONSIBLE	PRIOR ITY
	TE RC 0100-W13	A	5492		INSTALLED					
	TE RC 0100-W9	A	5491		INSTALLED					
	TE RC 0100-Y8	A	5494		INSTALLED					
	TE RC 0101-R20	A	5498		INSTALLED					
	TE RC 0101-T18	A	5500		INSTALLED					
	TE RC 0101-T20	A	5499		INSTALLED					
	TE RC 0101-W16	A	5497		INSTALLED					
	TE RC 0101-W18	A	5495		INSTALLED					
	TE RC 0101-Y14	A	5496		INSTALLED					

SORT TYPE:PKG,STAT GLOBAL REV# 5 02/06/84

A/E: EBASCO SERVICES INC.
UTILITY: LOUISIANA POWER & LIGHT

FACILITY: WATERFORD SES #3
INDEX OF QUALIFICATION STATUS/PUNCHLIST ITEMS

HSSS: COMBUSTION ENG.
CAPACITY: 1165 MW(E)

PAGE- 52

DOCUM. PACKAGE	TAG/ITEM REF#	0588 CAT	QDEF NO	REV #	REMARKS	STATUS	WORK ITEM DESCRIPTION	SCHEDULE DATE	RESPONSIBLE	PRIORITY
42.1W3	3AC-FM129A	A	1190	05	INSTALLED	QUALIFIED WITHOUT EXCEPTION	1. FILE COMPLETE IN ALL ASPECTS			
	3AC-FM130B	A	1191	05	INSTALLED					
	3AC-FM131A/B	A	1192	05	INSTALLED					
	3AC-TM646A	A	1236	05	INSTALLED					
	3AC-TM649A	A	1237	05	INSTALLED					
	3AC-TM652B	A	1238	05	INSTALLED					
	3AC-TM655B	A	1239	05	INSTALLED					

SORT TYPE: PKG, STAT GLOBAL REV# 5 02/06/84

A/E: EBASCO SERVICES INC.
UTILITY: LOUISIANA POWER & LIGHT

FACILITY: WATERFORD SES #3
INDEX OF QUALIFICATION STATUS/PUNCHLIST ITEMS

NSSS: COMBUSTION ENG.
CAPACITY: 1165 MW(E)

PAGE- 53

DOCLN. PACKAGE	TAG/ITEM REF#	0588 CAT	0DEF NO	REV #	REMARKS	STATUS	WORK ITEM DESCRIPTION	SCHEDULE DATE	RESPONSIBLE	PRIORITY
42.2W3	D-69(SA)	A	0956	05	INSTALLED	QUALIFIED-WITHOUT EXCEPTION	1. FILE COMPLETE IN ALL ASPECTS			
	D-70(SB)	A	0959	05	INSTALLED					

SORT TYPE:PKG,STAT

GLOBAL REV# 5 02/06/84

A/E: EBASCO SERVICES INC.
UTILITY: LOUISIANA POWER & LIGHT

FACILITY: WATERFORD SES #3
INDEX OF QUALIFICATION STATUS/PUNCHLIST ITEMS

NSSS: COMBUSTION ENG.
CAPACITY: 1165 MW(E)

PAGE- 54

DOCUM. PACKAGE	TAG/ITEM REF#	0588 CAT	QDEF NO	REV #	REMARKS	STATUS	WORK ITEM DESCRIPTION	SCHEDULE DATE	RESPONSIBLE	PRIORITY
42.3W3	1SI-V1501B	A	1133	05	INSTALLED	QUALIFIED-FOR INTERIM OPERATION	1. SUBMITTAL OF TEST REPORT FROM BORG-WARNER.	04/84	BORG-WARNER	
	1SI-V1503A	A	0868	05			2. EVALUATION OF TEST REPORT, SUPPLEMENTARY REVIEW SHEETS TO BE UPDATED.	UPON RECEIPT OF TEST REPORT	B MOLNAR	
							3. UPDATE COMPONENT CHECKLIST & CHECKLIST REPORT AFTER RECEIVING TEST REPORT.	UPON RECEIPT OF TEST REPORT	B MOLNAR	
							4. GET FIELD VERIFICATION SHEET #868.	TO ADVISE	P HERRITT	
							5. HYDRAULIC FLUID FYRUEL 220 TO BE REPLACED WITH PAO - SEE MEMO FROM JZH/SKS TO W YAEGER DATED 9/26/83.	BY FUEL LOAD	SITE	

SORT TYPE:PKG,STAT

GLOBAL REV# 5 02/06/84

A/E: EBASCO SERVICES INC.
UTILITY: LOUISIANA POWER & LIGHT

FACILITY: WATERFORD SES #3
INDEX OF QUALIFICATION STATUS/PUNCHLIST ITEMS

NSSS: COMBUSTION ENG.
CAPACITY: 1165 MW(E)

PAGE- 55

DOCUM. PACKAGE	TAG/ITEM REF#	0588 CAT	QDEF NO	REV #	REMARKS	STATUS	WORK ITEM DESCRIPTION	SCHEDULE DATE	RESPONSIBLE	PRIORITY
52.1W3	CABLE SEALS	A	0608	05	INSTALLED	QUALIFIED-WITHOUT EXCEPTION	1. FILE COMPLETE IN ALL ASPECTS			
	CABLE SEALS	A	0619	05	INSTALLED					

SORT TYPE:PKG, STAT

GLOBAL REV# 5 02/06/84

A/E: EBASCO SERVICES INC.
UTILITY: LOUISIANA POWER & LIGHT

FACILITY: WATERFORD SES #3
INDEX OF QUALIFICATION STATUS/PUNCHLIST ITEMS

NSSS: COMBUSTION ENG.
CAPACITY: 1165 MW(E)

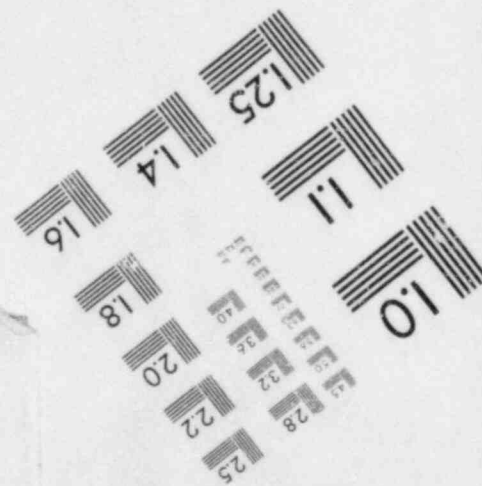
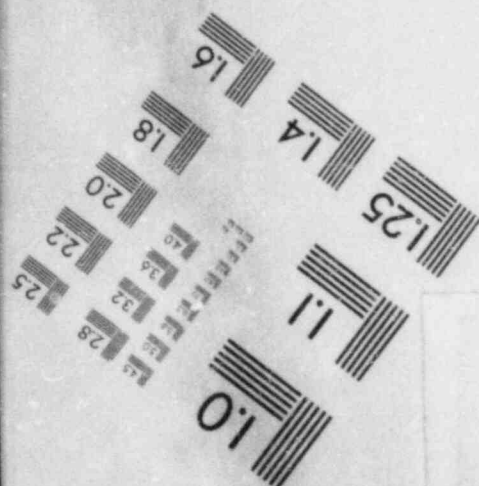
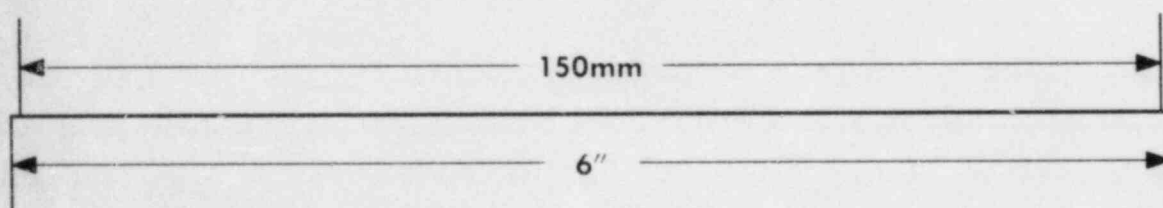
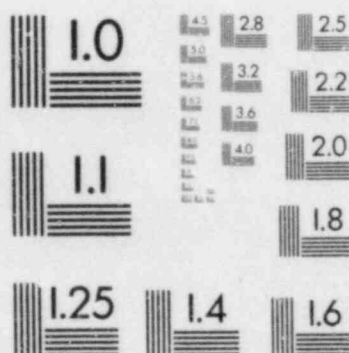
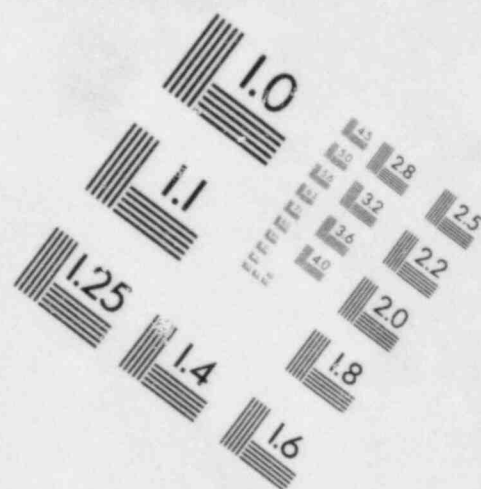
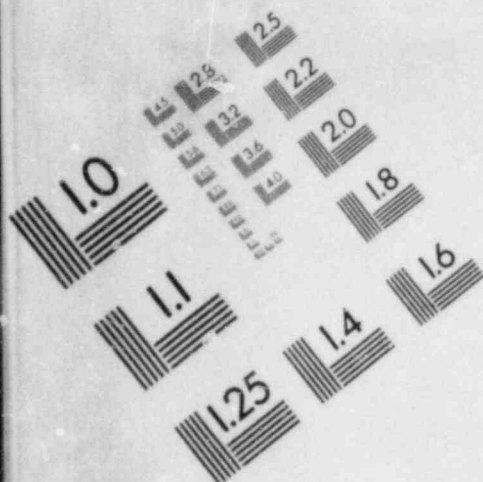
PAGE- 56

DOCUM. PACKAGE	TAG/ITEM REF#	0588 CAT	QDEF NO	REV #	REMARKS	STATUS	WORK ITEM DESCRIPTION	SCHEDULE DATE	RESPONSIBLE	PRI RITY
53.1W3	B/MC1-1	A	0708	05	INSTALLED	QUALIFIED WITHOUT EXCEPTION	1. FILE COMPLETE IN ALL ASPECTS			
	B/MC1-1	A	0706	05	INSTALLED					
	B/MC1-1	A	0707	05	INSTALLED					

SORT TYPE: PKG, STAT

GLOBAL REV# 5 02/06/84

IMAGE EVALUATION
TEST TARGET (MT-3)



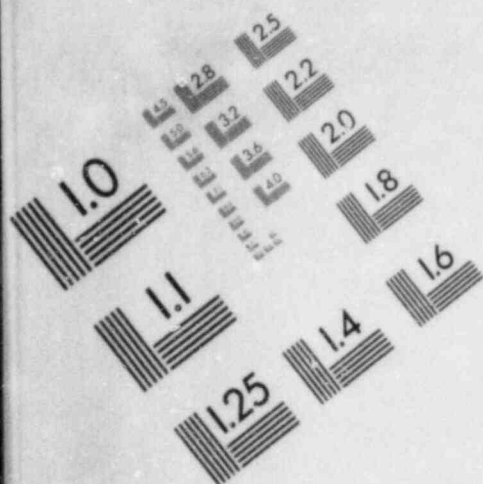
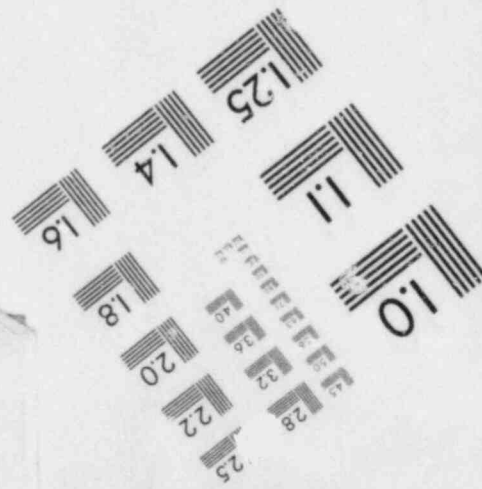
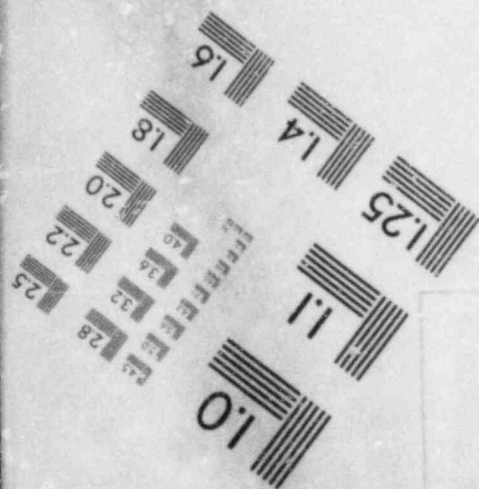
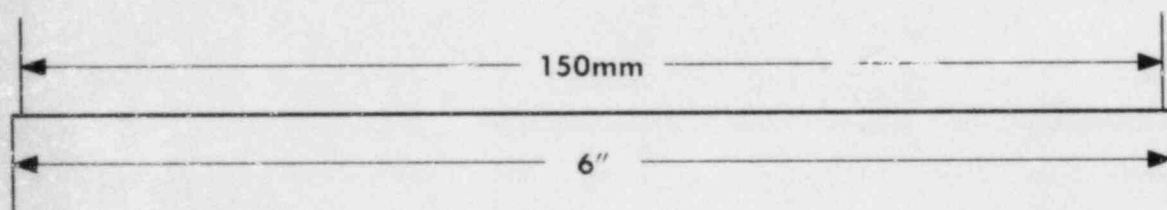
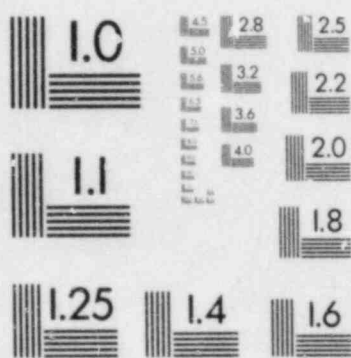
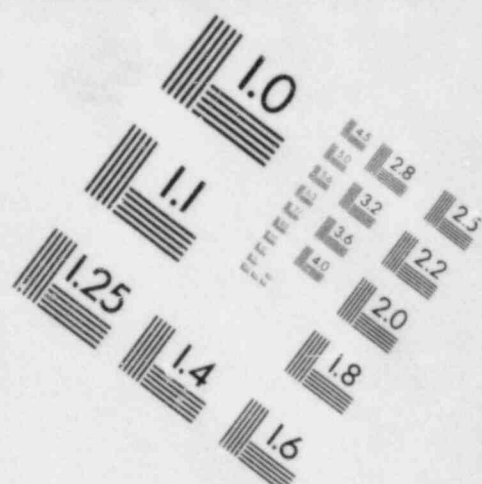


IMAGE EVALUATION
TEST TARGET (MT-3)



DOCUM. PACKAGE	TAG/ITEM REF#	0588 CAT	QDEF NO	REV #	REMARKS	STATUS	WORK ITEM DESCRIPTION	SCHEDULE DATE	RESPONSIBLE	PRIORITY
55.3W3	B/M C10-6	A	0677	05	INSTALLED	QUALIFIED WITHOUT EXCEPTION	1. FILE COMPLETE IN ALL ASPECTS			
	B/M C10-7	A	0678	05	INSTALLED					
	B/M C8-1	A	0651	05	INSTALLED					
	B/M C8-1	A	0659	05	INSTALLED					
	B/M C8-1	A	0660	05	INSTALLED					
	B/M C8-1	A	0654	05	INSTALLED					
	B/M C8-1	A	0649	05	INSTALLED					
	B/M C8-1	A	0655	05	INSTALLED					
	B/M C8-1	A	0650	05	INSTALLED					
	B/M C8-1	A	0653	05	INSTALLED					
	B/M C8-1	A	0652	05	INSTALLED					
	B/M C8-15	A	0664	05	INSTALLED					
	B/M C8-15	A	0687	05	INSTALLED					
	B/M C8-20	A	0670	05	INSTALLED					
	B/M C8-20	A	0671	05	INSTALLED					
	B/M C8-20	A	0672	05	INSTALLED					
	B/M C8-20	A	0673	05	INSTALLED					
	B/M C8-20	A	0669	05	INSTALLED					
	B/M C8-20	A	0675	05	INSTALLED					
	B/M C8-20	A	0674	05	INSTALLED					
	B/M C8-20	A	0676	05	INSTALLED					
	B/M C8-15	A	0665	05	INSTALLED					
	B/M C8-1	A	0662	05	INSTALLED					
	C8-1	A	0661	05	INSTALLED					
	C8-1	A	0658	05	INSTALLED					
	C8-1	A	0668	05	INSTALLED					
	C8-1	A	0657	05	INSTALLED					
	C8-1	A	0656	05	INSTALLED					
	C8-1	A	0667	05	INSTALLED					
	C8-1	A	0666	05	INSTALLED					

SORT TYPE:PKG,STAT

GLOBAL REV# 5 02/06/84

A/E: EBASCO SERVICES INC.
UTILITY: LOUISIANA POWER & LIGHT

FACILITY: WATERFORD SES #3
INDEX OF QUALIFICATION STATUS/PUNCHLIST ITEMS

NSSS: COMBUSTION ENG.
CAPACITY: 1165 MW(E)

PAGE 58

DOCUM. PACKAGE	TAG/ITEM REF#	0588 CAT	QDEF NO	REV #	REMARKS	STATUS	WORK ITEM DESCRIPTION	SCHEDULE DATE	RESPONSIBLE	PRIO RITY
61.1W3	H2 RECOMBINER	A	0700	05	INSTALLED	QUALIFIED-AWAITING CONFIRMATORY DATA	1. FIELD VERIFICATION TO BE PERFORMED.	TO ADVISE	P HERRITT	
	H2 RECOMBINER	A	0701	05	INSTALLED					

SORT TYPE:PKG,STAT

GLOBAL REV# 5 02/06/84

DOCUM. PACKAGE	TAG/ITEM REF#	OSBB CAT	QDEF NO	REV #	REMARKS	STATUS	WORK ITEM DESCRIPTION	SCHEDULE DATE	RESPONSIBLE	PRIO RITY
70.1W3	B30921-SA	A	0721	05	INSTALLED	QUALIFIED		02/15/84	J NUCITO GOULD	
	B30921-SA	A	0713	05	INSTALLED					
	B30922-SA	A	0714	05	INSTALLED					
	B30922-SA	A	0722	05	INSTALLED					
	B30928-SB	A	0715	05	INSTALLED					
	B30928-SB	A	0723	05	INSTALLED					
	B30929-SB	A	0716	05	INSTALLED					
	B30929-SB	A	0724	05	INSTALLED					
	B3288-SA	A	0717	05	INSTALLED					
	B3288-SA	A	0709	05	INSTALLED					
	B3289-SA	A	0718	05	INSTALLED					
	B3289-SA	A	0710	05	INSTALLED					
	B3289-SB	A	0719	05	INSTALLED					
	B3298-SB	A	0711	05	INSTALLED					
	B3299-SB	A	0712	05	INSTALLED					
	B3299-SB	A	0720	05	INSTALLED					

SORT TYPE:PKG,STAT

GLOBAL REV# 5 02/06/84

A/E: EBASCO SERVICES INC.
 UTILITY: LOUISIANA POWER & LIGHT

FACILITY: WATERFORD SES #3
 INDEX OF QUALIFICATION STATUS/PUNCHLIST ITEMS

NSSS: COMBUSTION ENG.
 CAPACITY: 1165 MW(E)

PAGE- 60

DOCUM. PACKAGE	TAG/ITEM REF#	0588 CAT	0000 NO	0000 REV	REMARKS	STATUS	WORK ITEM DESCRIPTION	SCHEDULE DATE	RESPONSIBLE	PRIORITY
15.1M3	PEN-PEL-1	B	0612	05	INSTALLED	QUALIFIED-WITHOUT EXCEPTION	1. FILE TO BE UPDATED WITH PEN. FEEDTHRU'S FOR EX-CORE MONITORING EQUIPMENT.	02/15/84	A DEVITO	
	PEN-PEL-2	B	0684	05	INSTALLED					
	PEN-114	B	0693	05	INSTALLED					
	PEN-115	B	0694	05	INSTALLED					
	PEN-128,129,131	B	0695	05	INSTALLED					

SORT TYPE: PKG, STAT

GLOBAL REV# 5 02/06/84