



## LONG ISLAND LIGHTING COMPANY

SHOREHAM NUCLEAR POWER STATION

P.O. BOX 618, NORTH COUNTRY ROAD • WADING RIVER, N.Y. 11792

Direct Dial Number

January 17, 1984

SNRC-1008

Mr. Harold R. Denton, Director  
Office of Nuclear Reactor Regulation  
U.S. Nuclear Regulatory Commission  
Washington, D.C. 20555

Transmittal of the Monthly Status of the  
Equipment Summary List  
SER Issue No. 8, Dynamic Qualification  
Shoreham Nuclear Power Station - Unit 1  
Docket No. 50-322

- References:
1. NRC letter (A. Schwencer) to LILCO (M. S. Pollock), dated November 10, 1982, "Trip Report for Second Seismic Qualification Review Team (SQRT) Plant Site Audit"
  2. LILCO letter, SNRC-796, (J. L. Smith) to the NRC (H. R. Denton), dated November 23, 1982

Dear Mr. Denton:

As discussed in the referenced letters, LILCO committed to provide a monthly statusing of the equipment summary lists including BOP and NSSS equipment to assist the NRC in their review of this issue. This letter transmits ten (10) copies of the latest "List of Active Safety-Related Equipment at Qualification Level". In accordance with R. L. Tedesco's letter to LILCO dated January 28, 1981, four copies of this submittal are being forwarded directly to Dr. Morris Reich at Brookhaven National Laboratory.

Should you have any questions, please contact this office.

Very truly yours,

B. R. McCaffrey  
Manager, Nuclear Compliance and Safety  
Shoreham Nuclear Power Station

CC/ss L  
Enclosure

cc: C. Petrone  
All Parties Listed in Attachment 1  
Dr. Morris Reich, BNL, (4)

*Handwritten:* A046  
1/10

ATTACHMENT 1

Lawrence Brenner, Esq.  
Administrative Judge  
Atomic Safety and Licensing  
Board Panel  
U.S. Nuclear Regulatory  
Commission  
Washington, D.C. 20555

Dr. Peter A. Morris  
Administrative Judge  
Atomic Safety and Licensing  
Board Panel  
U.S. Nuclear Regulatory  
Commission  
Washington, D.C. 20555

Dr. George A. Gerguson  
School of Engineering  
Howard University  
2300 6th Street, N.W.  
Washington, D.C. 20059

Bernard M. Bordenick, Esq.  
David A. Repka, Esq.  
U. S. Nuclear Regulatory  
Commission  
Washington, D.C. 20555

Mr. James Dougherty  
3045 Porter Street  
Washington, D.C. 20008

Herbert E. Brown, Esq.  
Lawrence Coe Lanpher, Esq.  
Karla J. Letsche, Esq.  
Kirkpatrick, Lackhart, Hill  
Christopher & Phillips  
8th Floor  
1900 M. Street, N. W.  
Washington, D.C. 20036

Mr. Marc W. Goldsmith  
Energy Research Group  
4001 Totten Pond Road  
Waltham, Massachusetts 02154

MHB Technical Associates  
1723 Hamilton Avenue  
Suite K  
San Jose, California 95125

Stephen B. Latham, Esq.  
Twomey, Latham & Shea  
33 West Second Street  
P.O. Box 398  
Riverhead, New York 11901

Ralph Shapiro, Esq.  
Cammer and Shapiro, P.C.  
9 East 40th Street  
New York, New York 10016

Matthew J. Kelly, Esq.  
State of New York  
Department of Public Service  
Three Empire State Plaza  
Albany, New York 12223

Gerald C. Crotty, Esq.  
Counsel to the Governor  
Executive Chamber  
State Capitol  
Albany, New York 12224

SHOREHAM PT 1  
JOB NUMBER 1160002  
LILCO DOCKET 50-322

H LIST  
1-SORT  
ACTIVE

STONE & WEBSTER ENGINEERING CORPORATION  
MISCELLANEOUS CATEGORY I EQUIPMENT  
BOP QUALIFICATION LEVEL ( 20 ITEMS)  
YS-314

RUN DATE 12/21/83  
RUN TIME 16.31.00  
PAGE 1

MARK NUMBER	EQUIPMENT DESCRIPTION	SPEC NO.	DIV. RESP	VENDOR	BLDG ELEV	AVAIL INSP	QUAL REPT	QUAL METH	FREQ	TYPE HTNG	SAFE SHTON	QUAL STATUS
1C61*PT-011	SVC HTR HDR PRESS	406-2	CD	ROSEMOUNT	SH	YES	127516	HBT	60+	F	CS,HS	H
1P41*MOV031	SERV WATER DIS	197-7	PD	PRATT	SH020	YES	D-0034-1	SA/SAT	33+	P4	CS,HS	H
1P41*MOV032	SERV WATER HDR IV	197-8	PD	PRATT	SH033	YES	D-0034-6	SA/SAT	33+	P2	CS,HS	H
1P41*MOV035	T BELOW SUPPLY IV	197-8	PD	PRATT	SH025	YES	D-0034-6	SA/SAT	33+	P2	N	H
1P41*P-003	SERVICE WATER PUMPS	057	PD	BINGHAM-MILL	SH021	YES	ME-816	SA	28	F4	CS,HS	H
1P41*PDT150	SERV HTR DIFF	406-2	CD	ROSEMOUNT	SH	YES	127516	HBT	60+	F4	CS,HS	H
1P41*PNL-FX1	FD AUX RELAY CABINET	125-2	CD	RELIANCE	SH023	YES	99AX400708	SA/SAT	33+	F	CS,HS	H
1P41*S-001	SERVICE WATER STRAINER	081	PD	RP ADAMS CO	SH026	YES	N07503	DA	17	F4	CS,HS	H
1R24*MCC1110	480 V MOTOR CONT CENTE	115-1	ED	SQUARE D CO	SH021	YES	108-1.01L2	HBT	4	F	CS,HS	H
1R24*MCC1120	480 V MOTOR CONT CENTE	115-1	ED	SQUARE D CO	SH021	YES	108-1.01L2	HBT	4	F	CS,HS	H
1R43*P-201	FUEL OIL XFER PU	420	PD	CRANE CO	YD020	YES	ME572	SA	13	F3	CS	H
1R43*P-202	FUEL OIL XFER PU	420	PD	CRANE CO	YD020	YES	ME572	SA	13	F3	CS	H
1R43*RV025	P-202 DISCH	191	CD	LONERGAN	PH024	YES	502644	SA	60	P3	CS	H
1R43*RV026	P-201 DISCH	191	CD	LONERGAN	PH024	YES	502644	SA	60	P3	CS	H
1R43*TK-132	FUEL OIL STORAGE	114-3	PD	BUFFALO TANK	YD020	YES	NH(B)-22	SA	14	F3	CS	H
1X41*FN-068	SCROLL PUMPHSE SUP	270-6	PD	BUFFALO FORGE	SH034	YES	745-11140	SA	26+	F2	CS,HS	H
1X41*HOD042	FN-68 OUTDOOR AIR	319-4	CD	POWERS	SH025	YES	44057-1	HBT	21	F2	CS,HS	H
1X41*HOD043	FN-68 EXHAUST AIR	319-4	CD	POWERS	SH025	YES	44057-1	HBT	21	F2	CS,HS	H
1X41*HOD044	FN-68 RETURN AIR	319-4	CD	POWERS	SH025	YES	44057-1	HBT	21	F2	CS,HS	H

CS =COLD SHUT DOWN  
DA =DYNAMIC ANALYSIS  
F =FLOOR MOUNTED  
HS =HOT STANDBY  
HBT=MULTI-FREQUENCY  
BIAXIAL TESTING  
HST=MULTI-FREQUENCY  
SINGLE AXIAL TESTING

P =PIPE MOUNTED  
PC =PRIMARY CONT.  
PL =PEDESTAL  
QP =QUALIFIED BY  
PIPING ANALYSIS  
SA =STATIC ANALYSIS  
SAT=SINGLE FREQUENCY  
SINGLE AXIAL TESTING

SBT=SINGLE FREQUENCY  
BIAXIAL TESTING  
SC =SECONDARY CONT.  
\* =LOCATED ON CONT.  
HALL  
N =NEITHER CS OR HS  
Z =PASSIVE ITEM  
(SORT PAPER NOT  
REQ'D)

QUALIFICATION MILESTONES  
A =REEVALUATION COMPLETE  
B =REQUEST FOR QUAL OR BID ISSUED  
C =S/W RECOMMENDATION TO LILCO  
D =QUAL DOC RECEIVED  
E =HARDWARE MODIFICATION REQ'D  
F =QUAL DOC APVD & FILED  
G =SORT PAPER COMPLETE  
H =COPIES OF DOC TO DISTRIBUTION

REVISION 17 DECEMBER 1983

NOTE: NUMBER IN  
'TYPE' HTNG' COLUMN IS  
QUANTITY OF ITEMS.

SHOREHAM UNIT 1  
JOB NUMBER 1160002  
LILCO DOCKET 50-322

M LIST  
1-SORT  
ACTIVE

STONE & WEBSTER ENGINEERING CORPORATION  
MISCELLANEOUS CATEGORY I EQUIPMENT  
BOP QUALIFICATION LEVEL ( 20 ITEMS)  
IS-316

RUN DATE 12/21/83  
RUN TIME 16.31.00  
PAGE 2

MARK NUMBER	EQUIPMENT DESCRIPTION	SPEC NO.	DIV. RESP	VENDOR	BLDG ELEV	AVAIL INSP	QUAL REPT	QUAL METH	FREQ	TYPE SAFE MTNG SHDN	QUAL STATUS
1X41*TT008	SCRHL PUMPHSE TEMP	319-4	CD	POWERS	SH025	YES	43812-1	HBT	24	F2 N	H

CS =COLD SHUT DOWN  
DA =DYNAMIC ANALYSIS  
F =FLOOR MOUNTED  
HS =HOT STANDBY  
HBT=MULTI-FREQUENCY  
BIAXIAL TESTING  
HST=MULTI-FREQUENCY  
SINGLE AXIAL TESTING

P =PIPE MOUNTED  
PC =PRIMARY CONT.  
PL =PEDESTAL  
QP =QUALIFIED BY  
PIPING ANALYSIS  
SA =STATIC ANALYSIS  
SAT=SINGLE FREQUENCY  
SINGLE AXIAL TESTING

SBT=SINGLE FREQUENCY  
BIAXIAL TESTING  
SC =SECONDARY CONT.  
\* =LOCATED ON CONT.  
WALL  
N =NEITHER CS OR HS  
Z =PASSIVE ITEM  
(SORT PAPER NOT  
REQ'D)

QUALIFICATION MILESTONES  
A =REEVALUATION COMPLETE  
B =REQUEST FOR QUAL OR BID ISSUED  
C =S/H RECOMMENDATION TO LILCO  
D =QUAL DOC RECEIVED  
E =HARDWARE MODIFICATION REQ'D  
F =QUAL DOC APVD & FILED  
G =SORT PAPER COMPLETE  
H =COPIES OF DOC TO DISTRIBUTION

REVISION 17 DECEMBER 1983

NOTE: NUMBER IN  
'TYPE MTNG' COLUMN IS  
QUANTITY OF ITEMS.

SHOREHAM UNIT 1  
JOB NUMBER 1160002  
LILCO DOCKET 50-322

RB LIST  
1-SORT  
ACTIVE

STONE & WEBSTER ENGINEERING CORPORATION  
REACTOR BUILDING CATEGORY I FLOOR-MOUNTED EQUIPMENT  
BOP QUALIFICATION LEVEL (153 ITEMS)  
IS-316

RUN DATE 12/21/83  
RUN TIME 16.31.41  
PAGE 1

MARK NUMBER	EQUIPMENT DESCRIPTION	SPEC NO.	D.V. RESP	VENDOR	BLDG ELEV	AVAIL INSP	QUAL REPT	QUAL METH	FREQ	TYPE MTNG	SAFE SHDN	QUAL STATUS
1B21*LT007	PRESS TRANSMITTER	406-6	CD	ROSEMOUNT	SC079	YES	108025	HBT	50	F2	CS,HS	H
1021*PNS081	LIMIT SWITCH	10127	CD	NAHCO	PC082		QTR112	SAT	100	P12	N	H
1B21*PNS082	LIMIT SWITCH	10127	CD	NAHCO	SC082		QTR112	SAT	100	P12	N	H
1B21*PT 004	PRESS TRANSMITTER	406-6	CD	ROSEMOUNT	SC079	YES	108025	HBT	50	F2	CS,HS	H
1B21*PT 153	RV092 MONITOR	406-2	CD	ROSEMOUNT	SC040	YES	127516	HBT	60+	F11	CS,HS	H
1B21*QEN001	HS SRV QNCHRS	447	PD	SARGENT	PC008	YES	R-S-10078000	DA	9	F11	CS,HS	H
1B21*RV 093	VAC RELIEF VALVES	175	PD	AND. GRNHD	PC	YES	N05905198	SAT	18	F12	N	F
1B21*TE 147	HST PA STEAM LK DET	406-1	CD	ROSEMOUNT	SC078	YES	2767	SAT	60+	F2	CS,HS	H
1C11*SOV042	SOLENOID VALVE - ARI	10119	CD	ASCO	SC063	YES	DTB04R771651	SAT	90	F2	CS,HS	H
1C11*SOV048	SOLENOID VALVE - ARI	10119	CD	ASCO	SC063	YES	DTB04R771651	SAT	90	F2	CS,HS	H
1C61*LT 026	SUPP POOL	406-2	CD	ROSEMOUNT	SC008	YES	127516	HBT	60+	F	CS,HS	H
1C61*PT 012	DRYHELL PRESS	406-2	CD	ROSEMOUNT	SC098	YES	127516	HBT	60+	F	CS,HS	H
1C61*PT 106	SAFETY REL VALVE	406-2	CD	ROSEMOUNT	SC101	YES	127516	HBT	60+	F	CS,HS	H
1C61*TE 021	DRYHELL TEMP	406-1	CD	ROSEMOUNT	SC150	YES	2767	SAT	60+	F	CS,HS	H
1C61*TE 022	SUPP POOL TEMP	406-4	CD	ROSEMOUNT	PC028	YES	17607-1	HBT	60+	F2	CS,HS	H
1011*PNL061	CON DM MON	332	PD	NHC	SC112	YES	45493-1	HBT	12	F	N	H
1021*RE 035	RAD MONITOR	475-3	CD	KAMAN	PC074	YES	16683-1	HBT	100	F2	N	F
1E21*P-049	LOOP LEVEL PUMPS	235	PD	GOULD PUMP	SC008	YES	HE-320	SA	60+	F2	CS	H
1E41*P-050	LOOP LEVEL PUMP	235	PD	GOULD PUMP	SC008	YES	HE-320	SA	60+	F	CS	H
1E41*PT 142	TO LUBE OIL COOLER	406-2	CD	ROSEMOUNT	SC8	YES	127516	HBT	60+	F	CS,HS	H

CS =COLD SHUT DOWN  
D =DUCT MOUNTED  
DA =DYNAMIC ANALYSIS  
F =FLOOR MOUNTED  
HS =HOT STANDBY  
HBT=MULTI-FREQUENCY  
BIAXIAL TESTING  
HST=MULTI-FREQUENCY  
SINGLE AXIAL TESTING

P =PIPE MOUNTED  
PC =PRIMARY CONT.  
PL =PEDESTAL  
QP =QUALIFIED BY  
PIPING ANALYSIS  
SA =STATIC ANALYSIS  
SAT=SINGLE FREQUENCY  
SINGLE AXIAL TESTING

SBT=SINGLE FREQUENCY  
BIAXIAL TESTING  
SC =SECONDARY CONT.  
/ =LOCATED ON CONT.  
WALL  
N =NEITHER CS OR HS  
Z =PASSIVE ITEM  
(SORT PAPER NOT  
REQ'D)

QUALIFICATION MILESTONES  
A =REEVALUATION COMPLETE  
B =REQUEST FOR QUAL OR BID ISSUED  
C =S/W RECOMMENDATION TO LILCO  
D =QUAL DOC RECEIVED  
E =HARDWARE MODIFICATION REQ'D  
F =QUAL DOC APVD & FILED  
G =SORT PAPER COMPLETE  
H =COPIES OF DOC TO DISTRIBUTION

REVISION 17 DECEMBER 1983

NOTE: NUMBER IN  
'TYPE MTNG' COLUMN IS  
QUANTITY OF ITEMS.

SHOREHAM UNIT 1  
JOB NUMBER 1160002  
LILCO DOCKET 50-322

RB LIST  
1-SORT  
ACTIVE

STONE & WEBSTER ENGINEERING CORPORATION  
REACTOR BUILDING CATEGORY I FLOOR-MOUNTED EQUIPMENT  
BOP QUALIFICATION LEVEL (153 ITEMS)  
IS-316

RUN DATE 12/21/83  
RUN TIME 16.31.41  
PAGE 2

MARK NUMBER	EQUIPMENT DESCRIPTION	SPEC NO.	DIV. RESP	VENDOR	BLDG ELEV	AVAIL INSP	QUAL REPT	QUAL METH	FREQ	TYPE HTNG	SAFE SHTDN	QUAL STATUS
1E51WP-051	LOOP LEVEL PUMP	235	PD	GOULD PUMP	SC008	YES	HE-320	SA	60+	F	CS	H
1E51WP-142	TO LUBE OIL COOLER	406-2	CD	ROSEMOUNT	SC8	YES	127516	HBT	60+	F	CS,HS	H
1F16WRAK-22	HI DENSITY SPNT FUEL R	427	PD	WACHTER	SC137	YES	LIL-T-151	DA	10	F29	N	H
1F16WRAK-23	PERH CR STOR RACKS	427	PD	WACHTER	SC137	YES	LIL-T-151	DA	10	F	N	H
1F16WRAK-24	TEMP CR STOR RACKS	427	PD	WACHTER	SC137	YES	LIL-T-151	DA	10	F2	N	H
1G11WFT 647	SUPP POOL PUMP BACK	406-2	CD	ROSEMOUNT	SC008	YES	127516	HBT	60+	F3	CS,HS	H
1G11WLE 642	RB FLOOR LEVEL	473	CD	DELAVAL	SC008	YES	45700-1	HBT	14	F	N	H
1G11WLE 645	RB FLOOD LEVEL	473	CD	DELAVAL	SC008	YES	45700-1	HBT	14	F2	N	H
1G41WE-019	FUEL STG POOL HT EXCHA	190-1	PD	STRUTHERS CO	SC151	YES	70-06-30787	SA	25	F2	CS,HS	H
1G41WP-023	FUEL STORAGE POOL COOL	062G-1	PD	GOULD PUMP	SC151	YES	HE-325	SA	33	F2	N	H
1P41WFT 146	RBCLCH KX SERV WATER	406-2	CD	ROSEMOUNT	SC024	YES	127516	HBT	60+	F2	CS,HS	H
1P41WFT 151	RAD MON SAMPLE	406-2	CD	ROSEMOUNT	SC008	YES	127516	HBT	60+	F2	CS,HS	H
1P42WE-011	RBCLCH HT EXCHANGER	190-2	PD	STRUTHERS CO	SC8	YES	70-06-30786	SA	12	F2	CS,HS	H
1P42WE-117	BOOSTER HT EXCH	190-3	PD	STRUTHERS	SC8	YES	79-06-33475	SA	5+	F2	HS	H
1P42WLS 012	RBCLCH TK-026	407-1	CD	MAGNETROL	SC160	YES	43235-1	HBT	17	F2	HS	H
1P42WLS 013	RBCLCH TK-026	407-1	CD	MAGNETROL	SC160	YES	43235-1	HBT	17	F2	HS	H
1P42WP-005	RB CLOSED LOOP COOLING	062G-3	PD	GOULD PUMP	SC151	YES	HE-354	SA	60	F3	HS	H
1P42WPS 021	PUMP 1P42WP005C DISCH	348-2	ED	ASCO	SC153	YES	178	SAT	60+	F3	HS	H
1P42WPS 022	PUMP 1P42WP005B DISCH	348-2	ED	ASCO	SC153	YES	178	SAT	60+	F3	HS	H
1P42WPS 046	PUMP 1P42WP035A DISCH	348-2	ED	ASCO	SC151	YES	178	SAT	60+	F3	HS	H

CS =COLD SHUT DOWN  
D =DUCT MOUNTED  
DA =DYNAMIC ANALYSIS  
F =FLOOR MOUNTED  
HS =HOT STANDBY  
HBT=MULTI-FREQUENCY  
BIAXIAL TESTING  
HST=MULTI-FREQUENCY  
SINGLE AXIAL TESTING

P =PIPE MOUNTED  
PC =PRIMARY CONT.  
PL =PEDESTAL  
QP =QUALIFIED BY  
PIPING ANALYSIS  
SA =STATIC ANALYSIS  
SAT=SINGLE FREQUENCY  
SINGLE AXIAL TESTING

SBT=SINGLE FREQUENCY  
BIAXIAL TESTING  
SC =SECONDARY CONT.  
/ =LOCATED ON CONT.  
HALL  
N =NEITHER CS OR HS  
Z =PASSIVE ITEM  
(SQRT PAPER NOT  
REQ'D)

QUALIFICATION MILESTONES  
A =REEVALUATION COMPLETE  
B =REQUEST FOR QUAL OR BTD ISSUED  
C =S/H RECOMMENDATION TO LILCO  
D =QUAL DOC RECEIVED  
E =HARDWARE MODIFICATION REQ'D  
F =QUAL DOC APVD & FILED  
G =SQRT PAPER COMPLETE  
H =COPIES OF DOC TO DISTRIBUTION

REVISION 17 DECEMBER 1983

NOTE: NUMBER IN  
'TYPE HTNG' COLUMN IS  
QUANTITY OF ITEMS.

SHOREHAM UNIT 1  
JOB NUMBER 1160002  
LILCO DOLKET 50-322

RB LIST  
1-SORT  
ACTIVE

STONE & WEBSTER ENGINEERING CORPORATION  
REACTOR BUILDING CATEGORY I FLOOR-MOUNTED EQUIPMENT  
BOP QUALIFICATION LEVEL (153 ITEMS)  
IS-316

RUN DATE 12/21/83  
RUN TIME 16.31.41  
PAGE 3

MARK NUMBER	EQUIPMENT DESCRIPTION	SPEC NO.	DIV. RESP	VENDOR	BLDG ELEV	AVAIL INSP	QUAL REPT	QUAL METH	FREQ	TYPE MTNG	SAFE SHTDN	QUAL STATUS
1P42*TK-026	RBCLN HEAD TANK	114-2	PD	BUFFALO TANK	SC151	YES	NH(B)25-1A	SA	9	F2	HS	H
1P50*PS 105	SERV AIR HDR PRESS	348-2	ED	ASCO	SC102		178	SAT	60+	F2	CS,HS	H
1P50*PS 113	SERV AIR HDR NORM SUP	348-2	ED	ASCO	SC102		178	SAT	60+	F2	CS,HS	H
1P50*PT 111	ADS ACCUMULATOR	406-2	CD	ROSEMOUNT	SC101	YES	127516	HBT	60+	F2	CS,HS	H
1P50*PT 116	SERV AIR HDR PRESS	406-2	CD	ROSEMOUNT	SC101	YES	127516	HBT	60+	F2	CS,HS	H
1R24*MCC-111H	MTR CNTRL CNTR	115-1	ED	SQUARE D CO	SC150	YES	108-1.01-L2	HBT	4	F	CS,HS	H
1R24*MCC-111X	MOTOR CONT CNTR, BUS 1	115-1	ED	SQUARE D CO	SC113	YES	108-1.01-L2	HBT	4	F	CS,HS	H
1R24*MCC-111Y	MOTOR CONT CNTR, BUS 1	115-1	ED	SQUARE D CO	SC78	YES	108-1.01-L2	HBT	4	F	CS,HS	H
1R24*MCC-111Z	MOTOR CONT CNTR, BUS 1	115-1	ED	SQUARE D CO	SC78	YES	108-1.01-L2	HBT	4	F	CS,HS	H
1R24*MCC-112H	MOTOR CONT CNTR, BUS 1	115-1	ED	SQUARE D CO	SC150	YES	108-1.01-L2	HBT	4	F	CS,HS	H
1R24*MCC-112X	MOTOR CONT CNTR, BUS 1	115-1	ED	SQUARE D CO	SC78	YES	108-1.01-L2	HBT	4	F	CS,HS	H
1R24*MCC-112Y	MOTOR CONT CNTR, BUS 1	115-1	ED	SQUARE D CO	SC112	YES	108-1.01-L2	HBT	4	F	CS,HS	H
1R24*MCC1111	MOTOR CONT CNTR, BUS 1	115-1	ED	SQUARE D CO	SC40	YES	108-1.01-L2	HBT	4	F	CS,HS	H
1R24*MCC1112	MOTOR CONT CNTR, BUS 1	115-1	ED	SQUARE D CO	SC113	YES	108-1.01-L2	HBT	4	F	CS,HS	H
1R24*MCC1113	MOTOR CONT CNTR, BUS 1	115-1	ED	SQUARE D CO	SC113	YES	108-1.01-L2	HBT	4	F	CS,HS	H
1R24*MCC1114	MOTOR CONT CNTR, BUS 1	115-1	ED	SQUARE D CO	SC151	YES	108-1.01-L2	HBT	4	F	CS,HS	H
1R24*MCC1117	MOTOR CONT CNTR, BUS 1	115-1	ED	SQUARE D CO	SC40	YES	108-1.01-L2	HBT	4	F	CS,HS	H
1R24*MCC1118	480 V MOTOR CONT CENTE	115-1	ED	SQUARE D CO	SC113	YES	108-1.01-L2	HBT	4	F	CS,HS	H
1R24*MCC1119	480 V MOTOR CONT CENTE	115-1	ED	SQUARE D CO	SC40	YES	108-1.01-L2	HBT	4	F	CS,HS	H
1R24*MCC1121	MOTOR CONT CNTR, BUS 1	115-1	ED	SQUARE D CO	SC40	YES	108-1.01-L2	HBT	4	F	CS,HS	H

CS =COLD SHUT DOWN  
D =DUCT MOUNTED  
DA =DYNAMIC ANALYSIS  
F =FLOOR MOUNTED  
HS =HOT STANDBY  
HBT=MULTI-FREQUENCY  
BIAXIAL TESTING  
HST=MULTI-FREQUENCY  
SINGLE AXIAL TESTING

P =PIPE MOUNTED  
PC =PRIMARY CONT.  
PL =PEDESTAL  
QP =QUALIFIED BY  
PIPING ANALYSIS  
SA =STATIC ANALYSIS  
SAT=SINGLE FREQUENCY  
SINGLE AXIAL TESTING

SBT=SINGLE FREQUENCY  
BIAXIAL TESTING  
SC =SECONDARY CONT.  
/ =LOCATED ON CONT.  
WALL  
N =NEITHER CS OR HS  
Z =PASSIVE ITEM  
(SORT PAPER NOT  
REQ'D)

QUALIFICATION MILESTONES  
A =REEVALUATION COMPLETE  
B =REQUEST FOR QUAL OR BID ISSUED  
C =S/W RECOMMENDATION TO LILCO  
D =QUAL DOC RECEIVED  
E =HARDWARE MODIFICATION REQ'D  
F =QUAL DOC APVD & FILED  
G =SORT PAPER COMPLETE  
H =COPIES OF DOC TO DISTRIBUTION

REVISION 17 DECEMBER 1983

NOTE: NUMBER IN  
'TYPE MTNG' COLUMN IS  
QUANTITY OF ITEMS.

SHOREHAM UNIT 1  
JOB NUMBER 1160002  
LILCO DOCKET 50-322

RB LIST  
1-SORT  
ACTIVE

STONE & WEBSTER ENGINEERING CORPORATION  
REACTOR BUILDING CATEGORY I FLOOR-MOUNTED EQUIPMENT  
BOP QUALIFICATION LEVEL (153 ITEMS)  
IS-316

RUN DATE 12/21/83  
RUN TIME 16.31.41  
PAGE 4

MARK NUMBER	EQUIPMENT DESCRIPTION	SPEC NO.	DIV. RESP	VENDOR	BLDG ELEV	AVAIL INSP	QUAL REPT	QUAL METH	FREQ	TYPE MTNG	SAFE SHTDN	QUAL STATUS
1R24*MCC1122	MOTOR CONT CNTR. BUS 1	115-1	ED	SQUARE D CO	SC79	YES	108-1.01-L2	HBT	4	F	CS,HS	H
1R24*MCC1123	MOTOR CONT CNTR. BUS 1	115-1	ED	SQUARE D CO	SC113	YES	108-1.01-L2	HBT	4	F	CS,HS	H
1R24*MCC1124	MOTOR CONT CNTR. BUS 1	115-1	ED	SQUARE D CO	SC151	YES	108-1.01-L2	HBT	4	F	CS,HS	H
1R24*MCC1127	MOTOR CONT CNTR. BUS 1	115-1	ED	SQUARE D CO	SC40	YES	108-1.01-L2	HBT	4	F	CS,HS	H
1R24*MCC1128	480 V MOTOR CONT CENTE	115-1	ED	SQUARE D CO	SC113	YES	108-1.01-L2	HBT	4	F	CS,HS	H
1R24*MCC1129	480 V MOTOR CONT CENTE	115-1	ED	SQUARE D CO	SC40	YES	108-1.01-L2	HBT	4	F	CS,HS	H
1R24*MCC1131	MOTOR CONT CNTR. BUS 1	115-1	ED	SQUARE D CO	SC63	YES	108-1.01-L2	HBT	4	F	CS,HS	H
1R24*HG-111	LPCI HG SET	439-1	ED	LOUIS ALLIS	SC150	YES	ME698	SA	27	F	N	H
1R24*HG-112	LPCI HG SET	439-1	ED	LOUIS ALLIS	SC150	YES	ME698	SA	27	F	N	H
1R24*HG-113	LPCI HG SET	439-1	ED	LOUIS ALLIS	SC150	YES	ME698	SA	27	F2	N	H
1R24*PNL-B1	480 VAC CKT BKR	115-2	ED	SQUARE D CO	SC112	YES	8998-10.09-L23	HBT	20	F	CS,HS	H
1R24*PNL-G1	480 VAC CKT BKR	115-2	ED	SQUARE D CO	SC112	YES	8998-10.09-L23	HBT	20	F	CS,HS	H
1R24*PNL-R1	480 VAC CKT BKR	115-2	ED	SQUARE D CO	SC112	YES	8998-10.09-L23	HBT	20	F	CS,HS	H
1R24*PNL-R2	480 VAC CKT BKR	115-2	ED	SQUARE D CO	SC112	YES	8998-10.09-L23	HBT	20	F	CS,HS	H
1R24*PNL-Y1	480 VAC CKT BKR	115-2	ED	SQUARE D CO	SC112	YES	8998-10.09-L23	HBT	20	F	CS,HS	H
1R24*PNL-01	480 VAC CKT BKR	115-2	ED	SQUARE D CO	SC78	YES	8998-10.09-L23	HBT	20	F	CS,HS	H
1R24*PNL-02	480 VAC CKT BKR	115-2	ED	SQUARE D CO	SC78	YES	8998-10.09-L23	HBT	20	F	CS,HS	H
1R24*PNL-03	480 VAC CKT BKR	115-2	ED	SQUARE D CO	SC78	YES	8998-10.09-L23	HBT	20	F	CS,HS	H
1R24*PNL-04	480 VAC CNTRL PHR FEED	115-2	ED	SQUARE D CO	SC112	YES	8998-10.09-L23	HBT	20	F	CS,HS	H
1R24*PNL-111	LPCI SIP PNL	439-2	ED	LOUIS ALLIS	SC150		84-66829	HBT	27	F	N	H

CS =COLD SHUT DOWN  
D =DUCT MOUNTED  
DA =DYNAMIC ANALYSIS  
F =FLOOR MOUNTED  
HS =HOT STANDBY  
HBT=MULTI-FREQUENCY  
BIAXIAL TESTING  
HST=MULTI-FREQUENCY  
SINGLE AXIAL TESTING

P =PIPE MOUNTED  
PC =PRIMARY CONT.  
PL =PEDESTAL  
QP =QUALIFIED BY  
PIPING ANALYSIS  
SA =STATIC ANALYSIS  
SAT=SINGLE FREQUENCY  
SINGLE AXIAL TESTING

SBT=SINGLE FREQUENCY  
BIAXIAL TESTING  
SC =SECONDARY CONT.  
/ =LOCATED ON CONT.  
HALL  
N =NEITHER CS OR HS  
Z =PASSIVE ITEM  
(SORT PAPER NOT  
REQ'D)

QUALIFICATION MILESTONES  
A =REEVALUATION COMPLETE  
B =REQUEST FOR QUAL OR BID ISSUED  
C =S/W RECOMMENDATION TO LILCO  
D =QUAL DOC RECEIVED  
E =HARDWARE MODIFICATION REQ'D  
F =QUAL DOC APVD & FILED  
G =SORT PAPER COMPLETE  
H =COPIES OF DOC TO DISTRIBUTION

REVISION 17 DECEMBER 1983

NOTE: NUMBER IN  
'TYPE MTNG' COLUMN IS  
QUANTITY OF ITEMS.

SHOREHAM UNIT 1  
JOB NUMBER 1160002  
LILCO DOCKET 50-322

RB LIST  
1-SORT  
ACTIVE

STONE & WEBSTER ENGINEERING CORPORATION  
REACTOR BUILDING CATEGORY I FLOOR-MOUNTED EQUIPMENT  
BOP QUALIFICATION LEVEL (153 ITEMS)  
IS-316

RUN DATE 12/21/83  
RUN TIME 26.31.41  
PAGE 5

MARK NUMBER	EQUIPMENT DESCRIPTION	SPEC NO.	DIV. RESP	VENDOR	BLOG ELEV	AVAIL INSP	QUAL REPT	QUAL METH	FREQ	TYPE MTNG	SAFE SHTDN	QUAL STATUS
1R24*PNL-112	LPCI SIP PNL	439-2	ED	LOUIS ALLIS	SC150		84-66829	HBT	27	F	N	H
1R24*PNL-113	LPCI SIP PNL	439-2	ED	LOUIS ALLIS	SC150		84-66829	HBT	27	F2	N	H
1R24*TRS111X	LCPI ATS	438	ED	ASCO	SC112	YES	14606	HBT	13	F	CS,HS	H
1R24*TRS112Y	LCPI ATS	438	ED	ASCO	SC112	YES	14606	HBT	13	F	CS,HS	H
1R35*PNL-B2	EMER 120 V PNL B2-SC	124-1	ED	SYSTEM CONT	SC112	YES	45322-1	HBT	15	F	CS,HS	H
1R35*PNL-R2	EMER 120 V PNL R2-SC	124-1	ED	SYSTEM CONT	SC112	YES	45322-1	HBT	15	F	CS,HS	H
1R35*T-B2	480-120/240V TRANS	248-1	ED	MAGNETICS	SC112	YES	HYLE43424-1	HBT	9	F	CS,HS	H
1R35*T-R2	480-120/240V TRANS	248-1	ED	MAGNETICS	SC112	YES	HYLE43424-1	HBT	9	F	CS,HS	H
1R42*HCC-0A1	125 VDC MOTOR CONT CEN	168	ED	GEN ELEC	SC40	YES	79GPC005	SAT	100	F	CS,HS	H
1R42*HCC-0A2	125 VDC MOTOR CONT CEN	168	ED	GEN ELEC	SC112	YES	79GPC005	SAT	100	F	CS,HS	H
1R42*HCC-0B1	125 VDC MOTOR CONT CEN	168	ED	GEN ELEC	SC40	YES	79GPC005	SAT	100	F	CS,HS	H
1R42*HCC-0D2	125 VDC MOTOR CONT CEN	168	ED	GEN ELEC	SC112	YES	79GPC005	SAT	100	F	CS,HS	H
1T23*Z-EA1	REACTOR CONT ELEC PEN	134	ED	GEN ELEC CO	PC078	YES	F73414	SAT	24	F	CS,HS	H
1T23*Z-EB1	REACTOR CONT ELEC PEN	456	ED	CONAX	PC078	YES	IPS 453	SAT	24	F	CS,HS	H
1T23*Z-EB2	REACTOR CONT ELEC PEN	134	ED	GEN ELEC CO	PC078	YES	F73414	SAT	24	F	CS,HS	H
1T23*Z-ED5	REACTOR CONT ELEC PEN	134	ED	GEN ELEC CO	PC078	YES	F73414	SAT	24	F	CS,HS	H
1T23*Z-ED6	REACTOR CONT LLEC PEN	134	ED	GEN ELEC CO	PC078	YES	F73414	SAT	24	F	CS,HS	H
1T23*Z-HB3	REACTOR CONT ELEC PEN	456	ED	CONAX	PC078	YES	IPS 453	SAT	24	F	CS,HS	H
1T23*Z-HB4	REACTOR CONT ELEC PEN	134	ED	GEN ELEC CO	PC078	YES	F73414	SAT	24	F	CS,HS	H
1T23*Z-HC4	REACTOR CONT ELEC PEN	134	ED	GEN ELEC CO	PC078	YES	F73414	SAT	24	F	CS,HS	H

CS =COLD SHUT DOWN  
D =DUCT MOUNTED  
DA =DYNAMIC ANALYSIS  
F =FLOOR MOUNTED  
HS =HOT STANDBY  
HBT=MULTI-FREQUENCY  
BIAXIAL TESTING  
HST=MULTI-FREQUENCY  
SINGLE AXIAL TESTING

P =PIPE MOUNTED  
PC =PRIMARY CONT.  
PL =PEDESTAL  
QP =QUALIFIED BY  
PIPING ANALYSIS  
SA =STATIC ANALYSIS  
SAT=SINGLE FREQUENCY  
SINGLE AXIAL TESTING

SBT=SINGLE FREQUENCY  
BIAXIAL TESTING  
SC =SECONDARY CONT.  
/ =LOCATED ON CONT.  
WALL  
N =NEITHER CS OR HS  
Z =PASSIVE ITEM  
(SORT PAPER NOT  
REQ'D)

QUALIFICATION MILESTONES  
A =REEVALUATION COMPLETE  
B =REQUEST FOR QUAL OR BID ISSUED  
C =S/W RECOMMENDATION TO LILCO  
D =QUAL DOC RECEIVED  
E =HARDWARE MODIFICATION REQ'D  
F =QUAL DOC APVD & FILED  
G =SORT PAPER COMPLETE  
H =COPIES OF DOC TO DISTRIBUTION

REVISION 17 DECEMBER 1983

NOTE: NUMBER IN  
'TYPE MTNG' COLUMN IS  
QUANTITY OF ITEMS.

SHOREHAM UNIT 1  
JOB NUMBER 1160002  
LILCO DOCKET 50-322

RB LIST  
1-SORT  
ACTIVE

STONE & WEBSTER ENGINEERING CORPORATION  
REACTOR BUILDING CATEGORY I FLOOR-MOUNTED EQUIPMENT  
BOP QUALIFICATION LEVEL (153 ITEMS)  
IS-316

RUN DATE 12/21/83  
RUN TIME 16.31.41  
PAGE 6

MARK NUMBER	EQUIPMENT DESCRIPTION	SPEC NO.	DIV. RESP	VENDOR	BLDG ELEV	AVAIL INSP	QUAL REPT	QUAL METH	FREQ	TYPE HTNG	SAFE SHTDN	QUAL STATUS
1T23*Z-WD1	REACTOR CONT ELEC PEN	134	ED	GEN ELEC CO	PC078	YES	F73414	SAT	24	F	CS,HS	H
1T23*Z-WD2	REACTOR CONT ELEC PEN	134	ED	GEN ELEC CO	PC078	YES	F73414	SAT	24	F	CS,HS	H
1T46*AOD040	RB REFUEL LVL EXHAUST	319-1	CD	POWERS REGUL	SC154	YES	44540-1	SA/SAT	40	F2	CS	H
1T46*AOD041	RB POT CONTAM AREA EXH	319-5	CD	POWERS REGUL	SC112	YES	43812-1	SA/SAT	24	F2	CS,HS	H
1T46*CLC-05	RBSVS COOLING COILS	276-1	PD	BUFFALO FORGE	SC113	YES	80N-27781	SA	5	F2	CS,HS	H
1T46*FLT-01	RBSVS FILTER TRAINS	105-2	PD	FARR CO	SC112	YES	D-56291	SA/SAT	11	F2	CS,HS	H
1T46*FN-003	RB EXH FANS-RBNVS	270-5	PD	BUFFALO FORGE	SC124	YES	745-11136	SA	15	F3	CS	H
1T46*FN-079	RB EXH BOOSTER FAN	102-1	PD	BUFFALO FORGE	SC133	YES	745-4244C	SA	51	F2	CS,HS	H
1T46*FT 004	RBSVS EXH AIR FLOW	319-5	CD	POWERS REGUL	SC112	YES	43812-1	SA/SAT	24	F2	N	H
1T46*HE 002	FLT-1 MOISTURE	319-5	CD	POWERS REGUL	SC112	YES	43812-1	SA/SAT	24	F2	N	H
1T46*MOD031	RBSVS INLET TO MIX PLN	319-5	CD	POWERS REGUL	SC135	YES	43812-1	SA/SAT	24	F2	CS,HS	H
1T46*MOD034	RBSVS FILTER TRAIN DCH	319-2	CD	POWERS REGUL	SC182	YES	44540-1	SA/SAT	60	F2	CS	H
1T46*MOD036	FN-3 DISCHARGE AIR	319-5	CD	POWERS REGUL	SC126	YES	43812-1	SA/SAT	24	F3	CS,HS	H
1T46*MOD047	FN-79 DISCHARGE AIR	319-5	CD	POWERS REGUL	SC112	YES	43812-1	SA/SAT	24	F2	N	H
1T46*MOD048	FLT-1 INLET AIR	319-5	CD	POWERS REGUL	SC112	YES	43812-1	SA/SAT	24	F2	N	K
1T46*PDS045	FN-3 DIFF PRESSURE	319-5	CD	POWERS REGUL	SC112	YES	43812-1	SA/SAT	24	F2	CS,HS	H
1T46*PDS046	FN-3 DIFF PRESSURE	319-5	CD	POWERS REGUL	SC112	YES	43812-1	SA/SAT	24	F3	CS,HS	H
1T46*PDT003	FLT-1A DIFF PRESSURE	406-2	CD	ROSEMOUNT	SC112	YES	127516	HBT	60+	F2	CS,HS	H
1T46*PDT043	REACTOR BLDG DIFF	406-2	CD	ROSEMOUNT	SC220	YES	127516	HBT	60+	F2	CS,HS	H
1T46*TE 001	RBSVS RECIRC AIR TEMP	406-1	CD	ROSEMOUNT	SC144	YES	2767	SAT	60+	F2	CS,HS	H

CS =COLD SHUT DOWN  
D =DUCT MOUNTED  
DA =DYNAMIC ANALYSIS  
F =FLOOR MOUNTED  
HS =HOT STANDBY  
HBT=MULTI-FREQUENCY  
BIAXIAL TESTING  
HST=MULTI-FREQUENCY  
SINGLE AXIAL TESTING

P =PIPE MOUNTED  
PC =PRIMARY CONT.  
PL =PEDESTAL  
QP =QUALIFIED BY  
PIPING ANALYSIS  
SA =STATIC ANALYSIS  
SAT=SINGLE FREQUENCY  
SINGLE AXIAL TESTING

SBT=SINGLE FREQUENCY  
BIAXIAL TESTING  
SC =SECONDARY CONT.  
/ =LOCATED ON CONT.  
HALL  
N =NEITHER CS OR HS  
Z =PASSIVE ITEM  
(SQRT PAPER NOT  
REQ'D)

QUALIFICATION MILESTONES  
A =REEVALUATION COMPLETE  
B =REQUEST FOR QUAL OR BID ISSUED  
C =S/W RECOMMENDATION TO LILCO  
D =QUAL DOC RECEIVED  
E =HARDWARE MODIFICATION REQ'D  
F =QUAL DOC APVD & FILED  
G =SQRT PAPER COMPLETE  
H =COPIES OF DOC TO DISTRIBUTION

REVISION 17 DECEMBER 1983

NOTE: NUMBER IN  
'TYPE HTNG' COLUMN IS  
QUANTITY OF ITEMS.

SMOREHAN UNIT 1  
JOB NUMBER 1160002  
LILCO DOCKET 50-322

RB LIST  
1-SORT  
ACTIVE

STONE & WEBSTER ENGINEERING CORPORATION  
REACTOR BUILDING CATEGORY I FLOOR-MOUNTED EQUIPMENT  
BOP QUALIFICATION LEVEL (153 ITEMS)  
IS-316

PUN DATE 12/21/83  
RUN TIME 16.31.41  
PAGE 7

MARK NUMBER	EQUIPMENT DESCRIPTION	SPEC NO.	DIV. RESP	VENDOR	BLDG ELEV	AVAIL INSP	QUAL REF T	QUAL METH	FREQ	TYPE MTNG	SAFE SHTDN	QUAL STATUS
1T46*TE 006	TEMP. ELEMENT	406A	CD	CONAX	SC048	YES	IPS-805	HBT	60+	F	CS,HS	H
1T46*TE 022	AIR RETURN TO UC-2	406-1	CD	ROSEMOUNT	SC10	YES	2767	SAT	60+	F2	CS,HS	H
1T46*TE 023	AIR RETURN TO UC-3	406-1	CD	ROSEMOUNT	SC42	YES	2767	SAT	60+	F2	CS,HS	H
1T46*TE 024	AIR RETURN TO UC-4	406-1	CD	ROSEMOUNT	SC220	YES	2767	SAT	60+	F2	CS,HS	H
1T46*TE 025	AIR RETURN TO UC-5	406-1	CD	ROSEMOUNT	SC220	YES	2767	SAT	60+	F2	CS,HS	H
1T46*TE 028	MCC RM UNIT COOLER	406-1	CD	ROSEMOUNT	SC128	YES	2767	SAT	60+	F2	CS,HS	H
1T46*TE 059	*UC-21 UNIT CLR	406-1	CD	ROSEMOUNT	SC155	YES	2767	SAT	60+	F2	CS,HS	H
1T46*TE 060	*UC-22 UNIT CLR	406-1	CD	ROSEMOUNT	SC160	YES	2767	SAT	60+	F2	CS,HS	H
1T46*UC-002	UNIT COOLERS-RBSVS	276-2/6	PD	BUFFALO FORGE	SC8	YES	80N-27781	SA	5	F2	CS,HS	H
1T46*UC-003	UNIT COOLERS-RBSVS	276-2/6	PD	BUFFALO FORGE	SC008	YES	80N-27781	SA	5	F2	CS,HS	H
1T46*UC-004	UNIT COOLERS-RBSVS	276-3	PD	BUFFALO FORGE	SC175	YES	80N-27781	SA	5	F2	CS,HS	H
1T46*UC-005	UNIT COOLERS-RBSVS	276-3	PD	BUFFALO FORGE	SC175	YES	80N-27781	SA	5	F2	CS,HS	H
1T46*UC-020	UNIT COOLERS-MCC IN RB	276-4	PD	BUFFALO FORGE	SC112	YES	80N-27781	SA	5	F2	CS,HS	H
1T46*UC-021	UNIT COOLERS	276-5	PD	BUFFALO FORGE	SC150	YES	80N-27781	SA	5	F2	CS,HS	H
1T46*UC-022	UNIT COOLERS - RBSVS	276-5	PD	BUFFALO FORGE	SC161	YES	80N-27781	SA	5	F2	CS,HS	H
1T46*UC-023	UNIT COOLER MCC RB	276-7	PD	BUFFALO FORGE	SC040	YES	80N-27903-6	SA	5	F	N	H
1T48*FT 005M	HEPA FILTER INLET	406-2	CD	ROSEMOUNT	SC113	YES	127516	SAT	60+	F2	CS,HS	H
1T48*LS 061	COND LEVEL	407-1	CD	MAGNETROL	SC73	YES	43235-1	HBT	17	F2	HS	H
1T48*PNL-48	HYD RECOMB POWER CABIN	299-1	PD	ATONICS INT	SC112	YES	58083	HBT	14	F2	N	H
1T48*PNL-68	GAS ANALYZER-DRYHELL	344-1	PD	DELPHI IND	SC112	YES	1035-1	HBT	18	F2	N	H

CS =COLD SHUT DOWN  
D =DUCT MOUNTED  
DA =DYNAMIC ANALYSIS  
F =FLOOR MOUNTED  
HS =HOT STANDBY  
HBT=MULTI-FREQUENCY  
BIAXIAL TESTING  
HST=MULTI-FREQUENCY  
SINGLE AXIAL TESTING

P =PIPE MOUNTED  
PC =PRIMARY CONT.  
PL =PEDESTAL  
QP =QUALIFIED BY  
PIPING ANALYSIS  
SA =STATIC ANALYSIS  
SAT= SINGLE FREQUENCY  
SINGLE AXIAL TESTING

SBT= SINGLE FREQUENCY  
BIAXIAL TESTING  
SC =SECONDARY CONT.  
/ =LOCATED ON CONT.  
WALL  
N =NEITHER CS OR HS  
Z =PASSIVE ITEM  
(SORT PAPER NOT  
REQ'D)

QUALIFICATION MILESTONES  
A =REEVALUATION COMPLETE  
B =REQUEST FOR QUAL OR BID ISSUED  
C =S/W RECOMMENDATION TO LILCO  
D =QUAL DOC RECEIVED  
E =HARDWARE MODIFICATION REQ'D  
F =QUAL DOC APVD & FILED  
G =SORT PAPER COMPLETE  
H =COPIES OF DOC TO DISTRIBUTION

REVISION 17 DECEMBER 1983

NOTE: NUMBER IN  
'TYPE MTNG' COLUMN IS  
QUANTITY OF ITEMS.

SHOREHAM UNIT 1  
JOB NUMBER 1160002  
LILCO DOCKET 50-322

RB LIST  
1-SORT  
ACTIVE

STONE & WEBSTER ENGINEERING CORPORATION  
REACTOR BUILDING CATEGORY I FLOOR-MOUNTED EQUIPMENT  
BOP QUALIFICATION LEVEL (153 ITEMS)  
IS-316

RUN DATE 12/21/83  
RUN TIME 16.31.41  
PAGE 8

MARK NUMBER	EQUIPMENT DESCRIPTION	SPEC NO.	DIV. RESP	VENDOR	BLDG ELEV	AVAIL INSP	QUAL REPT	QUAL METH	FREQ	TYPE MTNG	SAFE SHDN	QUAL STATUS
1148*PNL-69	GAS ANALYZER-SUPPR CHM	344-1	PD	DELPHI IND	SC112	YES	1035-1	HBT	18	F2	N	H
1148*RC-002	HYD RECOMB UNIT	289-2	PD	ATONICS INT	SC112	YES	54591-2	HBT	14	F2	N	H
1293*LT 001	SUPPRESSION POOL LEVEL	406-2	CD	ROSEMOUNT	SC8	YES	127516	SAT	60+	F2	CS,HS	H
1293*PT 003	DRYHELL PRESSURE	406-3	CD	ROSEMOUNT	SC98	YES	108025	HBT	60+	F2	CS,HS	H
1293*PT 004	SUPP POOL PRESS	406-3	CD	ROSEMOUNT	SC40	YES	108025	HBT	60+	F2	CS,HS	H
1293*TE 110	RV092ACL DISCHARGE-1FT	406-4	CD	ROSEMOUNT	PC28	YES	17607-1	HBT	60+	F4	N	H
1293*TE 111	RV092BDE DISCHARGE-1FT	406-4	CD	ROSEMOUNT	PC28	YES	17607-1	HBT	60+	F4	N	H
1293*TE 112	RV092KG DISCHARGE-1FT	406-4	CD	ROSEMOUNT	PC28	YES	17607-1	HBT	60+	F4	N	H
1293*TE 113	RV092FHJ DISCHARGE-1FT	406-4	CD	ROSEMOUNT	PC28	YES	17607-1	HBT	60+	F4	N	H
1293*TE 132	RV092ACL DISCHARGE-2FT	406-4	CD	ROSEMOUNT	PC28	YES	17607-1	HBT	60+	F2	N	H
1293*TE 133	RV092BDE DISCHARGE-2FT	406-4	CD	ROSEMOUNT	PC28	YES	17607-1	HBT	60+	F2	N	H
1293*TE 134	RV092KG DISCHARGE-2FT	406-4	CD	ROSEMOUNT	PC28	YES	17607-1	HBT	60+	F2	N	H
1293*TE 135	RV092FHJ DISCHARGE-2FT	406-4	CD	ROSEMOUNT	PC28	YES	17607-1	HBT	60+	F2	N	H

CS =COLD SHUT DOWN  
D =DUCT MOUNTED  
DA =DYNAMIC ANALYSIS  
F =FLOOR MOUNTED  
HS =HOT STANDBY  
HBT=MULTI-FREQUENCY  
BIAXIAL TESTING  
HST=MULTI-FREQUENCY  
SINGLE AXIAL TESTING

P =PIPE MOUNTED  
PC =PRIMARY CONT.  
PL =PEDESTAL  
QP =QUALIFIED BY  
PIPING ANALYSIS  
SA =STATIC ANALYSIS  
SAT=SINGLE FREQUENCY  
SINGLE AXIAL TESTING

SBT=SINGLE FREQUENCY  
BIAXIAL TESTING  
SC =SECONDARY CONT.  
/ =LOCATED ON CONT.  
HALL  
N =NEITHER CS OR HS  
Z =PASSIVE ITEM  
(SORT PAPER NOT  
REQ'D)

QUALIFICATION MILESTONES REVISION 17 DECEMBER 1983  
A =REEVALUATION COMPLETE  
B =REQUEST FOR QUAL OR BID ISSUED  
C =S/W RECOMMENDATION TO LILCO  
D =QUAL DOC RECEIVED  
E =HARDWARE MODIFICATION REQ'D  
F =QUAL DOC APVD & FILED  
G =SORT PAPER COMPLETE  
H =COPIES OF DOC TO DISTRIBUTION  
NOTE: NUMBER IN  
'TYPE MTNG' COLUMN IS  
QUANTITY OF ITEMS.

SHOREHAM UNIT 1  
JOB NUMBER 1160002  
LILCO DOCKET 50-322

CB LIST  
1-SORT  
ACTIVE

STONE & WEBSTER ENGINEERS CORPORATION  
CONTROL BUILDING CATEGORY I EQUIPMENT  
BOP QUALIFICATION LEVEL (218 ITEMS)  
IS-316

RUN DATE 12/21/83  
RUN TIME 16.31.43  
PAGE 1

MARK NUMBER	EQUIPMENT DESCRIPTION	SPEC NO.	DIV. RESP	VENDOR	BLDG ELEV	AVAIL INSP	QUAL REPT	QUAL METH	TYPE FREQ	SAFE SHTDN	QUAL STATUS
1B21*PMU-501	TRIP/CALIB UNIT	406-5	CD	ROSEMOUNT	063	YES	127531	SAT	57+ F	N	H
1B21*TE-037	NH STM LINE TURB AREA	406-1	CD	ROSEMOUNT	042	YES	2767	SAT	35+ F4	CS,HS	H
1D11*P-126	AUX. PUMP SKID	475-5	PD	KAHAN	070	YES	K-83-1-U(R)	SA	27 F	N	F
1D11*P-134	AUX. PUMP SKID	475-5	PD	KAHAN	120	YES	K-83-1-U(R)	SA	27 F	N	F
1D11*PNL-021	RBSBVS MONITORING PANE	332	PD	NHC	063	YES	45493-1	HBT	13 F	N	H
1D11*PNL-022	RBSBVS MONITORING PANE	332	PD	NHC	063	YES	45493-1	HBT	13 F	N	H
1D11*PNL-025	CONT ROOM MONITOR PNL	332	PD	NHC	044	YES	45493-1	HBT	14 F2	N	H
1D11*PNL-026	CONT ROOM MONITOR PNL	332	PD	NHC	044	YES	45493-1	HBT	14 F2	N	H
1D11*PNL-027	CONT RH VENT MONIT PNL	332	PD	NHC	063	YES	45493-1	HBT	13 F	N	H
1D11*PNL-066	POST ACCOUNT MON	332	PD	NHC	063	YES	45493-1	HBT	14 F	N	H
1D11*PNL-067	POST ACCONT MONITORS	332	PD	NHC	063	YES	45493-1	HBT	14 F	N	H
1D11*PNL-068	POST ACCONT MONITORS	332	PD	NHC	063	YES	45493-1	HBT	14 F	N	H
1D11*PNL-069	POST ACCONT MONITORS	332	PD	NHC	063	YES	45493-1	HBT	14 F	N	H
1D11*PNL-080	RAD MON PNL	332	PD	NHC	063	YES	45493-1	HBT	6 F2	N	H
1D11*PNL-117	RAD MON SYS IND	475-4	PD	KAHAN	063	YES			F2	N	B
1D11*PNL-126	STA VENT MONITOR	475-1	PD	KAHAN	063	YES	16435	HBT	4 F	N	H
1D11*PNL-134	RB SVS MONITOR	475-1	PD	KAHAN	113	YES	16435	HBT	4 F	N	H
1D11*PNL-135	MICROCOMP FOR PNL126	475-2	PD	KAHAN	063	YES	16435-A	HBT	19 F	N	K
1D11*PNL-137	MICROCOMP FOR PNL134	475-2	PD	KAHAN	063	YES	16435-A	HBT	19 F	N	H
1G11*LTS-642	TK56 LEVEL	473	CD	DELAVAL	063	YES	45700-1	HBT	14 F	N	H

CS =COLD SHUT DOWN  
DA =DYNAMIC ANALYSIS  
F =FLOOR MOUNTED  
HS =HOT STANDBY  
HBT=MULTI-FREQUENCY  
BIAXIAL TESTING  
HST=MULTI-FREQUENCY  
SINGLE AXIAL TESTING

P =PIPE MOUNTED  
\* TEST ARTICLE  
QP =QUALIFIED BY  
PIPING ANALYSIS  
SA =STATIC ANALYSIS  
SAT=SINGLE FREQUENCY  
SINGLE AXIAL TESTING

SBT=SINGLE FREQUENCY  
BIAXIAL TESTING  
N =NEITHER CS OR HS  
Z =PASSIVE ITEM  
(SORT PAPER NOT  
REQ'D)

QUALIFICATION MILESTONES  
A =REEVALUATION COMPLETE  
B =REQUEST FOR QUAL OR BID ISSUED  
C =S/H RECOMMENDATION TO LILCO  
D =QUAL DOC RECEIVED  
E =HARDWARE MODIFICATION REQ'D  
F =QUAL DOC APVD & FILED  
G =SORT PAPER COMPLETE  
H =COPIES OF DOC TO DISTRIBUTION

REVISION 17 DECEMBER 1983

NOTE: NUMBER IN  
'TYPE MTNG' COLUMN IS  
QUANTITY OF ITEMS.

SHOREHAM UNIT 1  
JOB NUMBER 116G002  
LILCO DOCKET 50-322

CB LIST  
1-SORT  
ACTIVE

STONE & WEBSTER ENGINEERING CORPORATION  
CONTROL BUILDING CATEGORY I EQUIPMENT  
BOP QUALIFICATION LEVEL (218 ITEMS)  
IS-316

RUN DATE 12/21/83  
RUN TIME 16.31.43  
PAGE 2

MARK NUMBER	EQUIPMENT DESCRIPTION	SPEC NO.	DIV. RESP	VENDOR	BLDG ELEV	AVAIL INSP	QUAL REPT	QUAL METH	TYPE FREQ	SAFE HTNG	QUAL SHTDN	STATUS
1G11*LT5-645	RB FLOOD LEVEL	473	CD	DELAVAL	063	YES	45700-1	HBT	14 F2	N	H	
1H11*MCB-01	MAIN CONTROL BOARD	120	CD	RELIANCE	063	YES	43331-1	SA/HST	16 F	CS,HS	H	
1H11*PNL-AC1	H2&O2 ANAL&PST ACC SAM	125-4	CD	RELIANCE	063	YES	RCAP-001-0	SA	13 F	CS	F	
1H11*PNL-AC2	H2&O2 ANAL&PST ACC SAM	125-4	CD	RELIANCE	063	YES	RCAP-001-0	SA	13 F	CS	F	
1H11*PNL-BR1	BUFFER RELAY CAB	125-5	CD	RELIANCE	044	YES	99AX400536	SA/HST	37 F	CS,HS	E	
1H11*PNL-HXP	MISC CONTROL PANEL	125-12	CD	RELIANCE	063	YES	99AX400590	SA/HST	17 F	CS,HS	F	
1H11*PNL-PCM	PRI CONT MONITOR PANEL	125-13	CD	RELIANCE	063	YES	99AX400666	SA/HST	14 F	N	E	
1H11*PNL-VC1	TB & MISC VENT	125-6	CD	RELIANCE	063	YES	99AX400536	SA/HST	17 F	CS	F	
1H11*PNL-VC2	RB VENT	125-6	CD	RELIANCE	063	YES	99AX400536	SA/HST	17 F	CS	E	
1H21*PNL-AX1	AUX RELAY	125-7	CD	RELIANCE	044	YES	99AX400590	SA/HST	32 F	CS,HS	E	
1H21*PNL-AX2	AUX RELAY	125-7	CD	RELIANCE	044	YES	99AX400590	SA/HST	32 F	CS,HS	E	
1H21*PNL-AX3	AUX RELAY PANEL AX3	125-14	CD	RELIANCE	063	YES	AAI-131	SA/HST	22 F	CS,HS	F	
1H21*PNL-AX5	AUX RELAY PANEL AX5	125-14	CD	RELIANCE	063	YES	AAI-131	SA/HST	22 F	CS,HS	F	
1H21*PNL-AX6	AUX RELAY PANEL AX6	125-14	CD	RELIANCE	063	YES	AAI-131	SA/HST	22 F	CS,HS	F	
1H21*PNL-VX1	VENT AUX RELAY	125-8	CD	RELIANCE	044	YES	99AX0536-VX1	SA/HST	34 F	CS,HS	E	
1H21*PNL-VX2	VENT AUX RELAY	125-8	CD	RELIANCE	044	YES	99AX0536-VX1	SA/HST	34 F	CS,HS	E	
1H21*PNL-VX3	VENT AUX RELAY	125-8	CD	RELIANCE	044	YES	99AX0536-VX1	SA/HST	23 F	CS,HS	E	
1H21*PNL-060	ELEC ANAL INSTR RH	125-1	CD	RELIANCE	044	YES	99AX400679	SA/HST	33 F	CS,HS	H	
1H43*HS003	FIRE DET SW STA	319-4	ED	POWERS REG	044	YES	43812-1	HBT	24 F3	CS,HS	H	
1H43*HS006	FIRE DET SW STA	319-4	ED	POWERS REG	025	YES	43812-1	HBT	24 F3	CS,HS	H	

CS =COLD SHUT DOWN  
DA =DYNAMIC ANALYSIS  
F =FLOOR MOUNTED  
HS =HOT STANDBY  
HBT=MULTI-FREQUENCY  
BIAXIAL TESTING  
HST=MULTI-FREQUENCY  
SINGLE AXIAL TESTING

P =PIPE MOUNTED  
\* TEST ARTICLE  
QP =QUALIFIED BY  
PIPING ANALYSIS  
SA =STATIC ANALYSIS  
SAT=SINGLE FREQUENCY  
SINGLE AXIAL TESTING

SBT=SINGLE FREQUENCY  
BIAXIAL TESTING  
N =NEITHER CS OR HS  
Z =PASSIVE ITEM  
(SORT PAPER NOT  
REQ'D)

QUALIFICATION MILESTONES  
A =REEVALUATION COMPLETE  
B =REQUEST FOR QUAL OR BID ISSUED  
C =S/H RECOMMENDATION TO LILCO  
D =QUAL DOC RECEIVED  
E =HARDWARE MODIFICATION REQ'D  
F =QUAL DOC APVD & FILED  
G =SORT PAPER COMPLETE  
H =COPIES OF DOC TO DISTRIBUTION

REVISION 17 DECEMBER 1983

NOTE: NUMBER IN  
'TYPE MTNG' COLUMN IS  
QUANTITY OF ITEMS.

SHOREHAM UNIT 1  
JOB NUMBER 1160002  
LILCO DOCKET 50-322

CB LIST  
1-SORT  
ACTIVE

STONE & WEBSTER ENGINEERING CORPORATION  
CONTROL BUILDING CATEGORY I EQUIPMENT  
BOP QUALIFICATION LEVEL (218 ITEMS)  
IS-316

RUN DATE 12/21/83  
RUN TIME 16.31.43  
PAGE 3

MARK NUMBER	EQUIPMENT DESCRIPTION	SPEC NO.	DIV. RESP	VENDOR	BLDG ELEV	AVAIL INSP	QUAL REPT	QUAL METH	TYPE FREQ HTNG	SAFE SHUTDN	QUAL STATUS
1H43*PNL-C01	C02 DETEC PNL RELAY R1	238	PD	RELIANCE	044	YES	44204-1	HBT	17 F2	N	H
1H43*PNL-C02	C02 SUPVR PNL BATTERY	238	PD	RELIANCE	025	YES	44204-1	HBT	17 F	N	H
1H43*PNL-C03	C02 SUPVR PNL BATTERY R	238	PD	RELIANCE	025	YES	44204-1	HBT	17 F	N	H
1H43*PNL-C04	C02 SUPVR PNL BATTERY R	238	PD	RELIANCE	025	YES	44204-1	HBT	17 F	N	H
1H43*PNL-C05	C02 SUPVR PNL DSL RH 1	238	PD	RELIANCE	015	YES	44204-1	HBT	17 F	N	H
1H43*PNL-C06	C02 SUPVR PNL DSL RH 1	238	PD	RELIANCE	015	YES	44204-1	HBT	17 F	N	H
1H43*PNL-C07	C02 SUPVR PNL DSL RH 1	238	PD	RELIANCE	015	YES	44204-1	HBT	17 F	N	H
1H43*PNL-C08	C02 SUPVR PNL EMER SHG	238	PD	RELIANCE	025	YES	44204-1	HBT	17 F	N	H
1H43*PNL-C09	C02 SUPVR PNL EMER SHG	238	PD	RELIANCE	025	YES	44204-1	HBT	17 F	N	H
1H43*PNL-C10	C02 SUPVR PNL EMER SHG	238	PD	RELIANCE	025	YES	44204-1	HBT	17 F	N	H
1H43*PNL-C11	C02 SUPVR PNL COMPUTER	238	PD	RELIANCE	044	YES	44204-1	HBT	17 F	N	H
1H50*AOV062	RBSVS & CRAC	423-1	CD	FISHER	071	YES	CD76-82	SAT	23 P2	CS,HS	H
1H50*AOV063	RBSVS & CRAC	423-1	CD	FISHER	071	YES	CD76-82	SAT	23 P2	CS,HS	H
1H50*AOV068	CHILLED WTR ISO BY	318-6	CD	COPEES VULCAN	071	YES	10.3.115	SA	124 P2	CS,HS	H
1H50*AOV069	CHILLED WTR ISO BY	318-6	CD	COPEES VULCAN	075	YES	10.3.115	SA	124 P2	CS,HS	H
1H50*FT-043	WC-3 EVAP	406-2	CD	ROSEMONT	063	YES	127516	SBT	50 F2	CS,HS	H
1H50*FT-053	WC-4 EVAP	406-2	CD	ROSEMONT	063	YES	127516	SBT	50 F2	CS,HS	H
1H50*LCV025	CH SYSTEM A MAKEUP	318-6	CD	COPEES VULCAN	072	YES	10.3.115	SA	124 P2	CS,HS	H
1H50*LS 002	ISOL BYP V AOV68A,69A	407-1	CD	MAGNETROL	063	YES	43235-1	HBT	17 F2	HS	H
1H50*LS 025	CH SYSTEM A MAKEUP	407-1	CD	MAGNETROL	063	YES	43235-1	HBT	17 F2	HS	H

CS =COLD SHUT DOWN  
DA =DYNAMIC ANALYSIS  
F =FLOOR MOUNTED  
HS =HOT STANDBY  
HBT=MULTI-FREQUENCY  
BIAXIAL TESTING  
HST=MULTI-FREQUENCY  
SINGLE AXIAL TESTING

P =PIPE MOUNTED  
\* TEST ARTICLE  
QP =QUALIFIED BY  
PIPING ANALYSIS  
SA =STATIC ANALYSIS  
SAT=SINGLE FREQUENCY  
SINGLE AXIAL TESTING

SBT=SINGLE FREQUENCY  
BIAXIAL TESTING  
N =NEITHER CS OR HS  
Z =PASSIVE ITEM  
(SORT PAPER NOT  
REQ'D)

QUALIFICATION MILESTONES  
A =REEVALUATION COMPLETE  
B =REQUEST FOR QUAL OR BID ISSUED  
C =S/H RECOMMENDATION TO LILCO  
D =QUAL DOC RECEIVED  
E =HARDWARE MODIFICATION REQ'D  
F =QUAL DOC APVD & FILED  
G =SORT PAPER COMPLETE  
H =COPIES OF DOC TO DISTRIBUTION

REVISION 17 DECEMBER 1983

NOTE: NUMBER IN  
'TYPE MTNG' COLUMN IS  
QUANTITY OF ITEMS.

SHOREHAM UNIT 1  
JOB NUMBER 1160002  
LILCO DOCKET 50-322

CB LIST  
1-SORT  
ACTIVE

STONE & WEBSTER ENGINEERING CORPORATION  
CONTROL BUILDING CATEGORY I EQUIPMENT  
BOP QUALIFICATION LEVEL (216 ITEMS)  
IS-316

RUN DATE 12/21/83  
RUN TIME 16.31.43  
PAGE 4

MARK NUMBER	EQUIPMENT DESCRIPTION	SPEC NO.	DIV. RESP	VENDOR	BLDG ELEV	AVAIL INSP	QUAL REPT	QUAL METH	TYPE FREQ MTNG	SAFE SHTDN	QUAL STATUS
1M50*HOV031	CH RETURN	197-5	PD	PRATT	071	YES	D-0034-7	SA	394 P2	CS,HS	H
1M50*HOV032	CH SUPPLY	197-5	PD	PRATT	075	YES	D-0034-7	SA	394 P2	CS,HS	H
1M50*HOV033	CH RETURN CROSSOVER	197-5	PD	PRATT	071	YES	D-0034-7	SA	394 P2	CS,HS	H
1M50*HOV034	CH SUPPLY CROSSOVER	197-5	PD	PRATT	075	YES	D-0034-7	SA	394 P2	CS,HS	H
1M50*P-137	RBSVS & CRAC CH PUMPS	62G-2	PD	GOULD PUMPS	063	YES	HE-326	SA	81 F2	CS,HS	H
1M50*P-138	RBSVS & CRAC CH PUMPS	62G-2	PD	GOULD PUMPS	063	YES	HE-326	SA	81 F2	CS,HS	H
1M50*P-139	RBSVS & CRAC COND PUMP	62H	PD	WORTHINGTON	063	YES	DHA-000047	SA	31 F2	CS,HS	H
1M50*P-140	RBSVS & CRAC COND PUMP	62H	PD	WORTHINGTON	063	YES	DHA-000047	SA	31 F2	CS,HS	H
1M50*PCV019	RBSV H50 DIFF PRESS	310-2	CD	FISHER CONTROL	063	YES	2-24451	SA/SAT	25 P2	CS	H
1M50*PDT019	RBSVS H50 DIF PR	406-2	CD	ROSEMONT	063	YES	127516	SBT	50 F2	CS,HS	H
1M50*PNL-03	CHILLER CONTROL PANEL	106-2	PD	TRANE CO	063	YES	NUC-102	SA	13 F2	CS,HS	H
1M50*PNL-04	CHILLER CONTROL PANEL	106-2	PD	TRANE	063	YES	NUC-102	SA	13 F2	CS,HS	H
1M50*RV091	CHILLED H2O SURGE TANK	191	CD	LOHERGAN	072	YES	502644	SA	60 P2	CS,HS	H
1M50*TE 089	RBSVS CHILLED HTR SYS	406-1	CD	ROSEMONT	078	YES	2767	SAT	35+ F2	CS,HS	H
1M50*TK-088	RBSVS & CRAC-SURGE TAN	114-1	PD	BUFFALO TANK	063	YES	NIIB-122-IA	SA	45 F2	CS,HS	H
1M50*HC-003	RBSVS & CRAC HTR CHILL	106-1	PD	TRANE CO	063	YES	NUC-102	SA	31 F2	CS,HS	H
1M50*HC-004	RBSVS & CRAC HTR CHOLL	106-1	PD	TRANE CO	063	YES	NUC-102	SA	31 F2	CS,HS	H
1N11*HOV031	2ND STAGE REHEAT STM	88V-14	PD	VELAN	051	YES	SR-6262	SA/SAT	33+ P2	HS	H
1N11*HOV036	MISC STM FROM HOR ISO	88V-14	PD	VELAN	051	YES	SR-6262	SA/SAT	33+ P	HS	H
1N11*HOV041	AUXILIARY STEAM SUPPLY	88V-8	PD	VELAN	051	YES	SR-6181	SA/SAT	33+ P	CS	H

CS =COLD SHUT DOWN  
DA =DYNAMIC ANALYSIS  
F =FLOOR MOUNTED  
HS =HOT STANDBY  
HBT=MULTI-FREQUENCY  
BIAXIAL TESTING  
HST=MULTI-FREQUENCY  
SINGLE AXIAL TESTING

P =PIPE MOUNTED  
\* TEST ARTICLE  
QP =QUALIFIED BY  
PIPING ANALYSIS  
SA =STATIC ANALYSIS  
SAT=SINGLE FREQUENCY  
SINGLE AXIAL TESTING

SBT=SINGLE FREQUENCY  
BIAXIAL TESTING  
N =NEITHER CS OR HS  
Z =PASSIVE ITEM  
(SQRT PAPER NOT  
REQ'D)

QUALIFICATION MILESTONES  
A =REEVALUATION COMPLETE  
B =REQUEST FOR QUAL OR BID ISSUED  
C =S/W RECOMMENDATION TO LILCO  
D =QUAL DOC RECEIVED  
E =HARDWARE MODIFICATION REQ'D  
F =QUAL DOC APVD & FILED  
G =SQRT PAPER COMPLETE  
H =COPIES OF DOC TO DISTRIBUTION

REVISION 17 DECEMBER 1983

NOTE: NUMBER IN  
'TYPE MTNG' COLUMN IS  
QUANTITY OF ITEMS.

SHOREHAM UNIT 1  
JOB NUMBER 1160002  
LILCO DOCKET 50-322

CB LIST  
1-SQRT  
ACTIVE

STONE & WEBSTER ENGINEERING CORPORATION  
CONTROL BUILDING CATEGORY I EQUIPMENT  
BOP QUALIFICATION LEVEL (218 ITEMS)  
IS-316

RUN DATE 12/21/83  
RUN TIME 16.31.43  
PAGE 5

MARK NUMBER	EQUIPMENT DESCRIPTION	SPEC NO.	DIV. RESP	VENDOR	BLDG ELEV	AVAIL INSP	QUAL REPT	QUAL METH	FREQ	TYPE HTNG	SAFE SHTDN	QUAL STATUS
1P41*AOV016	DIESEL HX E-13A OUTLET	423-1	CD	FISHER	025	YES	CD76-82	SA	23	P3	CS	H
1P41*FT 054	WC-3 COND WTR IN	406-2	CD	ROSEMONT	063	YES	127516	HBT	60+	F2	CS,HS	H
1P41*FT 059	WC-4 COND WTR IN	406-2	CD	ROSEMONT	063	YES	127516	HBT	60+	F2	CS,HS	H
1P41*MOV036A	VT CHILL WTR SPLY ISOL	197-4	PD	PRATT	012	YES	D-0034-3	SA	33+	P	CS,HS	H
1P41*MOV036B	VT CHILL WTR SPLY ISOL	197-4	PD	PRATT	012	YES	D-0034-3	SA	33+	P	CS,HS	H
1P41*MOV036C	VT CHILL WTR SPLY ISOL	197-6	PD	PRATT	050	YES	D-0034-4	SA	297	P	CS,HS	H
1P41*PS 008	SUCTION 1M50*P-139B	348-1	CD	ASCO	063	YES	178	SAT	50+	F2	CS,HS	H
1P41*PS 009	SUCTION 1M50*P-140B	348-1	CD	ASCO	063	YES	178	SAT	50+	F2	CS,HS	H
1P41*RV 019	OUTLET DIESEL HX-13	191	CD	LONERGAN	028	YES	502644	SA	60	P3	CS,HS	H
1P41*RV 064	CNTRL RH & RBSVS WC-3	191	CD	LONERGAN	072	YES	502644	SA	60	P2	HS	H
1P41*RV 065	CNTRL RH & RBSVS WC-4B	191	CD	LONERGAN	072	YES	502644	SA	60	P2	HS	H
1P41*TCV055	CNTRL RH & RBSVS WC-3	310-3	CD	FISHER CONT.	063	YES	CD76-20	SA	40	P6	CS,HS	H
1P41*TCV060	CNTRL RH & RBSVS WC-4	310-3	CD	FISHER CONT.	063	YES	CD76-20	SA	40	P6	CS,HS	H
1P41*TE 055	CNTRL RH & RBSVS WC-3	406A	CD	CONAX	068	YES	IPS-805	HBT	60	P2	CS,HS	H
1P41*TE 060	CNTRL RH & RBSVS WC-4	406A	CD	CONAX	068	YES	IPS-805	HBT	60	P2	CS,HS	H
1R22*SWG-101	4.16KV EMER BUS 101	39	ED	GEN ELEC CO	025	YES	300-91059	DA/SAT	8	F	CS,HS	H
1R22*SWG-102	4.16KV EMER BUS 102	39	ED	GEN ELEC CO	025	YES	300-91059	DA/SAT	8	F	CS,HS	H
1R22*SWG-103	4.16KV EMER BUS 103	39	ED	GEN ELEC CO	025	YES	300-91059	DA/SAT	8	F	CS,HS	H
1R23*PNL-001	480V LOAD RESET PANEL1	125-3	CD	RELIANCE	025	YES	AA1-125	SA/SAT	24	F	CS,HS	F
1R23*PNL-002	480V LOAD RESET PANEL2	125-3	CD	RELIANCE	025	YES	AA1-125	SA/SAT	24	F	CS,HS	F

CS =COLD SHUT DOWN  
DA =DYNAMIC ANALYSIS  
F =FLOOR MOUNTED  
HS =HOT STANDBY  
HBT=MULTI-FREQUENCY  
BIAXIAL TESTING  
HST=MULTI-FREQUENCY  
SINGLE AXIAL TESTING

P =PIPE MOUNTED  
\* TEST ARTICLE  
QP =QUALIFIED BY  
PIPING ANALYSIS  
SA =STATIC ANALYSIS  
SAT=SINGLE FREQUENCY  
SINGLE AXIAL TESTING

SBT=SINGLE FREQUENCY  
BIAXIAL TESTING  
N =NEITHER CS OR HS  
Z =PASSIVE ITEM  
(SQRT PAPER NOT  
REQ'D)

QUALIFICATION MILESTONES  
A =REEVALUATION COMPLETE  
B =REQUEST FOR QUAL OR BID ISSUED  
C =S/W RECOMMENDATION TO LILCO  
D =QUAL DOC RECEIVED  
E =HARDWARE MODIFICATION REQ'D  
F =QUAL DOC APVD & FILED  
G =SQRT PAPER COMPLETE  
H =COPIES OF DOC TO DISTRIBUTION

REVISION 17 DECEMBER 1983

NOTE: NUMBER IN  
'TYPE HTNG' COLUMN IS  
QUANTITY OF ITEMS.

SHOREHAM UNIT 1  
JOB NUMBER 1160002  
LILCO DOCKET 50-322

CB LIST  
1-SORT  
ACTIVE

STONE & WEBSTER ENGINEERING CORPORATION  
CONTROL BUILDING CATEGORY I EQUIPMENT  
BOP QUALIFICATION LEVEL (218 ITEMS)  
IS-316

RUN DATE 12/21/83  
RUN TIME 16.31.43  
PAGE 6

MARK NUMBER	EQUIPMENT DESCRIPTION	SPEC NO.	DIV. RESP	VENDOR	BLDG ELEV	AVAIL INSP	QUAL REPT	QUAL METH	FREQ	TYPE MTNG	SAFE SHDN	QUAL STATUS
1R23*PNL-003	480V LOAD RESET PANEL3	125-3	CD	RELIANCE	025	YES	AA1-125	SA/SAT	24	F	CS,HS	F
1R23*SHG-111	480V EMER SHGR BUS 111	95-1	ED	ITE	025	YES	33-48359	HBT	5	F	CS,HS	H
1R23*SHG-112	480V EMER SHGR BUS 112	95-1	ED	ITE	025	YES	33-48359	HBT	5	F	CS,HS	H
1R23*SHG-113	480V EMER SHGR BUS 113	95-1	ED	ITE	025	YES	33-48359	HBT	5	F	CS,HS	H
1R24*HCC1115	MOTOR CONT CNTR, BUS 1	115-1	ED	SQUARE D CO	025	YES	108-1.01 L2	HBT	4	F	CS,HS	H
1R24*HCC1116	MOTOR CONT CNTR, BUS 1	115-1	ED	SQUARE D CO	025	YES	108-1.01 L2	HBT	4	F	CS,HS	H
1R24*HCC1125	MOTOR CONT CNTR, BUS 1	115-1	ED	SQUARE D CO	025	YES	108-1.01 L2	HBT	4	F	CS,HS	H
1R24*HCC1126	MOTOR CONT CNTR, BUS 1	115-1	ED	SQUARE D CO	025	YES	108-1.01 L2	HBT	4	F	CS,HS	H
1R24*HCC1133	MOTOR CONT CNTR, BUS 1	115-1	ED	SQUARE D CO	025	YES	108-1.01 L2	HBT	4	F	CS,HS	H
1R24*HCC1134	MOTOR CONT CNTR, BUS 1	115-1	ED	SQUARE D CO	025	YES	108-1.01 L2	HBT	4	F	CS,HS	H
1R35*PNL-B1	EMER 120V PNL B1-REL R	124-2	ED	SYSTEM CONT	044	YES	15074	SAT	21	F	CS,HS	H
1R35*PNL-B3	EMER 120/240V PANEL	124-2	ED	SYSTEM CONT	020	YES	15074	SAT	21	F	CS,HS	H
1R35*PNL-R1	EMER 120V PNL R1-REL R	124-2	ED	SYSTEM CONT	044	YES	15074	SAT	21	F	CS,HS	H
1R35*PNL-R3	EMER 120/240V PANEL	124-2	ED	SYSTEM CONT	020	YES	15074	SAT	21	F	CS,HS	H
1R35*PNL-01	EMER 120V PNL 01-REL R	124-2	ED	SYSTEM CONT	044	YES	15074	SAT	21	F	CS,HS	H
1R35*PNL-02	EMER 120/240V PANEL	124-2	ED	SYSTEM CONT	020	YES	15074	SAT	21	F	CS,HS	H
1R35*T-B1	XFMR-EMER 120V PNL B1	248-2	ED	MAGNETICS	025	YES	43424-1	HBT	9	F	CS,HS	H
1R35*T-B3	XFMR-EMER 120V PNL B3	248-2	ED	MAGNETICS	025	YES	43424-1	HBT	9	F	CS,HS	H
1R35*T-R1	XFMR-EMER 120V PNL R1	248-2	ED	MAGNETICS	025	YES	43424-1	HBT	9	F	CS,HS	H
1R35*T-R3	XFMR-EMER 120V PNL R3	248-2	ED	MAGNETICS	025	YES	43424-1	HBT	9	F	CS,HS	H

CS =COLD SHUT DOWN  
DA =DYNAMIC ANALYSIS  
F =FLOOR MOUNTED  
HS =HOT STANDBY  
HBT=MULTI-FREQUENCY  
BIAXIAL TESTING  
HST=MULTI-FREQUENCY  
SINGLE AXIAL TESTING

P =PIPE MOUNTED  
\* TEST ARTICLE  
QP =QUALIFIED BY  
PIPING ANALYSIS  
SA =STATIC ANALYSIS  
SAT=SINGLE FREQUENCY  
SINGLE AXIAL TESTING

SBT=SINGLE FREQUENCY  
BIAXIAL TESTING  
N =NEITHER CS OR HS  
Z =PASSIVE ITEM  
(SQRT PAPER NOT  
REQ'D)

QUALIFICATION MILESTONES  
A =REEVALUATION COMPLETE  
B =REQUEST FOR QUAL OR BID ISSUED  
C =S/W RECOMMENDATION TO LILCO  
D =QUAL DOC RECEIVED  
E =HARDWARE MODIFICATION REQ'D  
F =QUAL DOC APVD & FILED  
G =SQRT PAPER COMPLETE  
H =COPIES OF DOC TO DISTRIBUTION

REVISION 17 DECEMBER 1983

NOTE: NUMBER IN  
'TYPE MTNG' COLUMN IS  
QUANTITY OF ITEMS.

SHOREHAM UNIT 1  
JOB NUMBER 1160002  
LILCO DOCKET 50-322

CB LIST  
1-SORT  
ACTIVE

STONE & WEBSTER ENGINEERING CORPORATION  
CONTROL BUILDING CATEGORY I EQUIPMENT  
BOP QUALIFICATION LEVEL (218 ITEMS)  
IS-316

RUN DATE 12/21/83  
RUN TIME 16.31.43  
PAGE 7

MARK NUMBER	EQUIPMENT DESCRIPTION	SPEC NO.	DIV. RESP	VENDOR	BLDG ELEV	AVAIL INSP	QUAL REPT	QUAL METH	FREQ	TYPE MTNG	SAFE SHTDN	QUAL STATUS
1R35*T-01	XFR-EHER 120V PNL 01	248-2	ED	MAGNETICS	025	YES	43424-1	HBT	9	F	CS,HS	H
1R35*T-02	XHFR-EHER 120V PNL 02	248-2	ED	MAGNETICS	025	YES	43424-1	HBT	9	F	CS,HS	H
1R35*T-201	XFR-HTR SPACE HTR-BUS	248-2	ED	MAGNETICS	025	YES	43424-1	HBT	9	F	CS,HS	H
1R35*T-202	XFR-HTR SPACE HTR-BUS	248-2	ED	MAGNETICS	025	YES	43424-1	HBT	9	F	CS,HS	H
1R35*T-203	XFR-HTR SPACE HTR-BUS	248-2	ED	MAGNETICS	025	YES	43424-1	HBT	9	F	CS,HS	H
1R41*E/S050	POWER SUPPLY	421	CD	BAILEY-METER	063	YES	QR-3201-7000PS	HBT	38+	F4	CS	H
1R42*BA-A1	125VOLT BATTERY	116	ED	GOULD INC	025	YES	42795	HBT	40+	F	CS,HS	H
1R42*BA-B1	125VOLT BATTERY	116	ED	GOULD INC	025	YES	42795	HBT	40+	F	CS,HS	H
1R42*BA-C1	125VOLT BATTERY	116	ED	GOULD INC	025	YES	42795	HBT	40+	F	CS,HS	H
1R42*BC-A1	125VOLT BATTERY CHARGE	118	ED	SOLIDSTATE	025	YES	3/29/76	SAT	8	F	CS,HS	H
1R42*BC-B1	125VOLT BATTERY CHARGE	118	ED	SOLIDSTATE	025	YES	3/29/76	SAT	8	F	CS,HS	H
1R42*BC-C1	125VOLT BATTERY CHARGE	118	ED	SOLIDSTATE	025	YES	3/29/76	SAT	8	F	CS,HS	H
1R42*PNL-A1	125 VDC DIST PANEL BUS	124-2	ED	SYSTEM CONT	025	YES	15074	SAT	21	F	CS,HS	H
1R42*PNL-A2	125 VDC DIST PANEL BUS	124-2	ED	SYSTEM CONT	044	YES	15074	SAT	21	F	CS,HS	H
1R42*PNL-B1	125 VDC DIST PANEL BUS	124-2	ED	SYSTEM CONT	025	YES	15074	SAT	21	F	CS,HS	H
1R42*PNL-B2	125 VDC DIST PANEL BUS	124-2	ED	SYSTEM CONT	044	YES	15074*	SAT	21	F	CS,HS	H
1R42*PNL-C1	125 VDC DIST PANEL BUS	124-2	ED	SYSTEM CONT	025	YES	15074	SAT	21	F	CS,HS	H
1R42*PNL-C4	125 VDC DST PNL-BLK-BS	124-2	ED	SYSTEM CONT	025	YES	15074	SAT	21	F	CS,HS	H
1R42*SHG-A1	125 VDC SHG BATTERY BU	95-2	ED	ITE	025	YES	33-51266	HBT	5	F	CS,HS	H
1R42*SHG-B1	125 VDC SHG BATTERY BU	95-2	ED	ITE	025	YES	33-51266	HBT	5	F	CS,HS	H

CS =COLD SHUT DOWN  
DA =DYNAMIC ANALYSIS  
F =FLOOR MOUNTED  
HS =HOT STANDBY  
HBT=MULTI-FREQUENCY  
BIAXIAL TESTING  
HST=MULTI-FREQUENCY  
SINGLE AXIAL TESTING

P =PIPE MOUNTED  
\* TEST ARTICLE  
QP =QUALIFIED BY  
PIPING ANALYSIS  
SA =STATIC ANALYSIS  
SAT=SINGLE FREQUENCY  
SINGLE AXIAL TESTING

SBT=SINGLE FREQUENCY  
BIAXIAL TESTING  
N =NEITHER CS OR HS  
Z =PASSIVE ITEM  
(SORT PAPER NOT  
REQ'D)

QUALIFICATION MILESTONES  
A =REEVALUATION COMPLETE  
B =REQUEST FOR QUAL OR BID ISSUED  
C =S/W RECOMMENDATION TO LILCO  
D =QUAL DOC RECEIVED  
E =HARDWARE MODIFICATION REQ'D  
F =QUAL DOC APVD & FILED  
G =SORT PAPER COMPLETE  
H =COPIES OF DOC TO DISTRIBUTION

REVISION 17 DECEMBER 1983

NOTE: NUMBER IN  
'TYPE MTNG' COLUMN IS  
QUANTITY OF ITEMS.

SHOREHAM UNIT 1  
JOB NUMBER 1160002  
LILCO DOCKET 50-322

CB LIST  
1-SORT  
ACTIVE

STONE & WEBSTER ENGINEERING CORPORATION  
CONTROL BUILDING CATEGORY I EQUIPMENT  
BOP QUALIFICATION LEVEL (218 ITEMS)  
IS-316

RUN DATE 12/21/83  
RUN TIME 16.31.43  
PAGE 8

MARK NUMBER	EQUIPMENT DESCRIPTION	SPEC NO.	DIV. RESP	VENDOR	BLDG ELEV	AVAIL INSP	QUAL REPT	QUAL METH	FREQ	TYPE MTNG	SAFE SHTDN	QUAL STATUS
1R42*SWG-C1	125 VDC SWG BATTERY BU	25-2	ED	ITE	025	YES	33-51266	MBT	5	F	CS,HS	H
1R43*G-101	EMER DIESEL GENERATOR	89	ED	DE LAVAL	025	YES	11001	DA	4	F18	CS,HS	H
1R43*G-102	EMER DIESEL GENERATOR	89	ED	DE LAVAL	025	YES	11001	SAT	4	F18	CS,HS	H
1R43*G-103	EMER DIESEL GENERATOR	89	ED	DE LAVAL	025	YES	11001	SAT	4	F18	CS,HS	H
1R43*LS 004	FUEL OIL AUX DAY TK	407-2	CD	MAGNETROL	022	YES	43235-1	SAT	17	F3	N	H
1R43*LS 007	FUEL OIL AUX DAY TK	407-2	CD	MAGNETROL	022	YES	43235-1	SAT	17	F3	N	H
1R43*TK-135	FUEL OIL DAY	114-4	PD	BUFFALO TANK	044	YES	NN(6)-134-IA	SA	27	F3	CS	H
1R81*T-012	HT TRACING TRANSFR	248-2	ED	MAGNETICS	025	YES	43424-1	HBT	9	F2	CS,HS	H
1T48*PNL-ACH	PC ATH CNTRL	125-9	CD	RELIANCE	063	YES	99AX400600	SA/SAT	19	F	N	F
1T48*PNL-A2	HYD RECOMBINER CONT CA	289-3	PD	ATONICS INT	063	YES	54591-4	HBT	6	F2	N	H
1T48*RK-25	HYDRO RECOMB CONT CABI	344-2	ED	DELPHI IND	063	YES	1035-5	SA/SAT	29	F2	N	H
1T48*RK-26	HYDRO RECOMB CONT CABI	344-2	ED	DELPHI IND	063	YES	1035-5	SA/SAT	29	F2	N	H
1X41*ACU-14	COMP, RELAY&EM SHGR RH	240	PD	BAHNSON CO	044	YES	A-47-75-01	SA	39	F2	CS,HS	H
1X41*DMPF	FIRE DAMPERS	54	PD	AIR BALANCE	044	YES	AB1-SH-009	SAT	9+	F30	CS,HS	H
1X41*FN-029	RELAY&EMER SHGR RET FN	270-1	PD	BUFFALO FORGE	053	YES	745-11139	SA	26	F2	CS,HS	H
1X41*FN-039	CR CHILL EQUIP RH EXH	270-2	PD	BUFFALO FORGE	067	YES	745-11140A	SA	57	F2	CS,HS	H
1X41*FN-072	BATTERY RH VENTILATION	270-3	PD	BUFFALO FORGE	035	YES	745-11140C	SA	105	F3	CS,HS	H
1X41*FS 013	ACU-14 AIR FLOW	319-4	ED	POWERS REG	031	YES	43812-1	HBT	24	F2	CS,HS	H
1X41*FS 017	FN-29 AIR FLOW	319-4	ED	POWERS REG	044	YES	43812-1	HBT	24	F2	CS,HS	H
1X41*HE 021	ACU-14 COOLING CNTRL	319-4	ED	POWERS REG	044	YES	43812-1	HBT	24	F2	CS,HS	H

CS =COLD SHUT DOWN  
DA =DYNAMIC ANALYSIS  
F =FLOOR MOUNTED  
HS =HOT STANDBY  
HBT=MULTI-FREQUENCY  
BIAXIAL TESTING  
HST=MULTI-FREQUENCY  
SINGLE AXIAL TESTING

P =PIPE MOUNTED  
\* TEST ARTICLE  
QP =QUALIFIED BY  
PIPING ANALYSIS  
SA =STATIC ANALYSIS  
SAT=SINGLE FREQUENCY  
SINGLE AXIAL TESTING

SBT=SINGLE FREQUENCY  
BIAXIAL TESTING  
N =NEITHER CS OR HS  
Z =PASSIVE ITEM  
(SORT PAPER NOT  
REQ'D)

QUALIFICATION MILESTONES  
A =REEVALUATION COMPLETE  
B =REQUEST FOR QUAL OR BID ISSUED  
C =S/W RECOMMENDATION TO LILCO  
D =QUAL DOC RECEIVED  
E =HARDWARE MODIFICATION REQ'D  
F =QUAL DOC APVD & FILED  
G =SORT PAPER COMPLETE  
H =COPIES OF DOC TO DISTRIBUTION

REVISION 17 DECEMBER 1983  
NOTE: NUMBER IN  
'TYPE MTNG' COLUMN IS  
QUANTITY OF ITEMS.

SHOREHAM UNIT 1  
JOB NUMBER 1160002  
LILCO DOCKET 50-322

CB LIST  
1-SORT  
ACTIVE

STONE & WEBSTER ENGINEERING CORPORATION  
CONTROL BUILDING CATEGORY I EQUIPMENT  
BOP QUALIFICATION LEVEL (218 ITEMS)  
IS-316

RUN DATE 12/21/83  
RUN TIME 16.31.43  
PAGE 9

MARK NUMBER	EQUIPMENT DESCRIPTION	SPEC NO.	DIV. RESP	VENDOR	BLDG ELEV	AVAIL INSP	QUAL REPT	QUAL METH	FREQ	TYPE MTNG	SAFE SHTDN	QUAL STATUS
1X41*HIT021	ACU-14 COOLING CNTRL	319-4	ED	POWERS REG	049	YES	43812-1	HBT	24	F2	CS,HS	H
1X41*MOD031	FN-039 OUTDOOR AIR	319-4	ED	POWERS REG	063	YES	43812-1	HBT	24	F2	CS,HS	H
1X41*MOD032	FN-039 EXHAUST AIR	319-4	ED	POWERS REG	064	YES	44540-1	HBT	27	F2	CS,HS	H
1X41*MOD035	ACU-14A DISCHARGE AIR	319-4	ED	POWERS REG	044	YES	43812-1	HBT	24	F2	CS,HS	H
1X41*MOD036	ON FAN FN-29A& B	319-4	ED	POWERS REG	044	YES	43812-1	HBT	24	F2	CS,HS	H
1X41*MOD039	FN-72 OUTDOOR AIR	319-4	ED	POWERS REG	037	YES	44057-1	HBT	21	F3	CS,HS	H
1X41*MOD040	FN-72 EXHAUST AIR	319-4	ED	POWERS REG	041	YES	44057-1	HBT	21	F3	CS,HS	H
1X41*MOD041	FN-72 RETURN AIR	319-4	ED	POWERS REG	035	YES	44057-1	HBT	21	F3	CS,HS	H
1X41*MOD059	RELAY & CHPTR RH TEMP	319-4	ED	POWERS REG	044	YES	44057-1	HBT	21	F2	CS,HS	H
1X41*PNLVC16	VENT CONTROL PANEL	319-3	ED	POWERS REG	025	YES	1001-6	SA/SAT	24	F	N	H
1X41*PNLVC17	VENT CONTROL PANEL	319-3	ED	POWERS REG	025	YES	1001-6	SA/SAT	24	F	N	H
1X41*PNLVC18	VENT CONTROL PANEL	319-3	ED	POWERS REG	025	YES	1001-6	SA/SAT	24	F	N	H
1X41*PNLVC19	VENT CONTROL PANEL	319-3	ED	POWERS REG	025	YES	1001-6	SA/SAT	24	F	CS,HS	H
1X41*PNLVC20	VENT CONTROL PANEL	319-3	ED	POWERS REG	025	YES	1001-6	SA/SAT	24	F	CS,HS	H
1X41*PNLVC21	VENT CONTROL PANEL	319-3	ED	POWERS REG	044	YES	1001-6	SA/SAT	24	F	CS,HS	H
1X41*TCV021	ACU-14 COOLING COIL	310-2	CD	FISHER CONT.	053	YES	2-24451	SA	25	P2	CS	H
1X41*TE 018	FN-72 DAMPER CONTROL	319-4	ED	POWERS REG	030	YES	43812-1	HBT	24	F3	CS,HS	H
1X41*TE 021	ACU-14 COOLING CONT	406-1	CD	ROSEMOUNT	044	YES	2767	SAT	35+	F2	CS,HS	H
1X41*TIS031	FN-39 CONTROL	319-4	ED	POWERS REG	068	YES	43812-1	HBT	24	F2	CS,HS	H
1X41*TT-001	RH TEMP IND	319-4	ED	POWERS REG	025	YES	43812-1	HBT	24	F2	N	H

CS =COLD SHUT DOWN  
DA =DYNAMIC ANALYSIS  
F =FLOOR MOUNTED  
HS =HOT STANDBY  
HBT=MULTI-FREQUENCY  
BIAXIAL TESTING  
HST=MULTI-FREQUENCY  
SINGLE AXIAL TESTING

P =PIPE MOUNTED  
\* TEST ARTICLE  
QP =QUALIFIED BY  
PIPING ANALYSIS  
SA =STATIC ANALYSIS  
SAT=SINGLE FREQUENCY  
SINGLE AXIAL TESTING

SBT=SINGLE FREQUENCY  
BIAXIAL TESTING  
N =NEITHER CS OR HS  
Z =PASSIVE ITEM  
(SORT PAPER NOT  
REQ'D)

QUALIFICATION MILESTONES  
A =REEVALUATION COMPLETE  
B =REQUEST FOR QUAL OR BID ISSUED  
C =S/W RECOMMENDATION TO LILCO  
D =QUAL DOC RECEIVED  
E =HARDWARE MODIFICATION REQ'D  
F =QUAL DOC APVD & FILED  
G =SORT PAPER COMPLETE  
H =COPIES OF DOC TO DISTRIBUTION

REVISION 17 DECEMBER 1983

NOTE: NUMBER IN  
'TYPE MTNG' COLUMN IS  
QUANTITY OF ITEMS.

SHOREHAM UNIT 1  
JOB NUMBER 1160002  
LILCO DOCKET 50-322

CB LIST  
1-SORT  
ACTIVE

STONE & WEBSTER ENGINEERING CORPORATION  
CONTROL BUILDING CATEGORY I EQUIPMENT  
BOP QUALIFICATION LEVEL (218 ITEMS)  
IS-316

RUN DATE 12/21/83  
RUN TIME 16.31.43  
PAGE 10

MARK NUMBER	EQUIPMENT DESCRIPTION	SPEC NO.	DIV. RESP	VENDOR	BLDG ELEV	AVAIL INSP	QUAL REPT	QUAL METH	FREQ	TYPE HTNG	SAFE SHTRN	QUAL STATUS
1X41*TT-002	RH TEMP IND	319-4	ED	POWERS REG	025	YES	43812-1	HBT	24	F2	N	H
1X41*TT-003	RH TEMP IND	319-4	ED	POWERS REG	025	YES	43812-1	HBT	24	F2	N	H
1X41*TT-004	RH TEMP IND	319-4	ED	POWERS REG	044	YES	43812-1	HBT	24	F2	N	H
1X41*TT-005	RH TEMP IND	319-4	ED	POWERS REG	044	YES	43812-1	HBT	24	F2	N	H
1X41*TT-006	CHILLER EQUIP RH TEMP	319-4	ED	POWERS REG	068	YES	43812-1	HBT	24	F2	N	H
1X41*TT-007	BAT RH TEMP	319-4	ED	POWERS REG	039	YES	43812-1	HBT	24	F2	N	H
1X41*TT-009	COMPUTER RH TEMP	319-4	ED	POWERS REG	044	YES	43812-1	HBT	24	F2	N	H
1X60*FN-028	DIESEL GEN RH SUPPLY F	270-4	PD	BUFFALO FORGE	040	YES	74S-11138	SA	20	F3	CS,HS	H
1X60*HOD031	FN-28 OUTDOOR AIR	319-4	ED	POWERS REG	038	YES	44057-1	HBT	21	F3	CS	H
1X60*HOD032	FN-39 HOT DAMPER	319-4	ED	POWERS REG	030	YES	44057-1	HBT	21	F3	CS	H
1X60*HOD033	FN-28 RETURN AIR	319-4	ED	POWERS REG	038	YES	44057-1	HBT	21	F3	CS	H
1X60*PNLVC13	VENT CONTROL PANEL	319-3	ED	POWERS REG	025	YES	1001-6	SA/SAT	24	F	CS,HS	H
1X60*PNLVC14	VENT CONTROL PANEL	319-3	ED	POWERS REG	025	YES	1001-6	SA/SAT	24	F	CS,HS	H
1X60*PNLVC15	VENT CONTROL PANEL	319-3	ED	POWERS REG	025	YES	1001-6	SA/SAT	24	F	CS,HS	H
1X61*ACU-07	CONTROL ROOM A/C UNITS	240	PD	BAHNSON CO	063	YES	A-47-75-01	SA	39	F2	CS,HS	H
1X61*AO037	CNTRL PH ISOL	319-4	ED	POWERS REG	063	YES	44540-1	HBT	27	F3	CS,HS	H
1X61*AOV036	CHTRL RH ISOL	111-1	PD	FISHER	063	YES	CD75-35	SA/SAT	17+	P2	CS	H
1X61*AOV038	CNTRL RH ISOL	111-1	PD	FISHER	073	YES	CD75-35	SA/SAT	21	P2	CS	H
1X61*AOV039	CHTRL RH ISOL	111-1	PD	FISHER	063	YES	CD75-35	SA/SAT	21	P2	CS	H
1X61*DHPP	FIRE DAMPERS	54	PD	AIR BALANCE	063	YES	AB1-SW-009	SAT	9+	F8	CS,HS	H

CS =COLD SHUT DOWN  
DA =DYNAMIC ANALYSIS  
F =FLOOR MOUNTED  
HS =HOT STANDBY  
HBT=MULTI-FREQUENCY  
BIAXIAL TESTING  
HST=MULTI-FREQUENCY  
SINGLE AXIAL TESTING

P =PIPE MOUNTED  
\* TEST ARTICLE  
QP =QUALIFIED BY  
PIPING ANALYSIS  
SA =STATIC ANALYSIS  
SAT=SINGLE FREQUENCY  
SINGLE AXIAL TESTING

SBT=SINGLE FREQUENCY  
BIAXIAL TESTING  
N =NEITHER CS OR HS  
Z =PASSIVE ITEM  
(SQRT PAPER NOT  
REQ'D)

QUALIFICATION MILESTONES  
A =REEVALUATION COMPLETE  
B =REQUEST FOR QUAL OR BID ISSUED  
C =S/W RECOMMENDATION TO LILCO  
D =QUAL DOC RECEIVED  
E =HARDWARE MODIFICATION REQ'D  
F =QUAL DOC APVD & FILED  
G =SQRT PAPER COMPLETE  
H =COPIES OF DOC TO DISTRIBUTION

REVISION 17 DECEMBER 1983

NOTE: NUMBER IN  
'TYPE HTNG' COLUMN IS  
QUANTITY OF ITEMS.

SHOREHAM UNIT 1  
JOB NUMBER 1160002  
LILCO DOCKET 50-322

CB LIST  
1-SORT  
ACTIVE

STONE & WEBSTER ENGINEERING CORPORATION  
CONTROL BUILDING CATEGORY I EQUIPMENT  
BOP QUALIFICATION LEVEL (218 ITEMS)  
IS-316

RUN DATE 12/21/83  
RUN TIME 16.31.43  
PAGE 11

MARK NUMBER	EQUIPMENT DESCRIPTION	SPEC NO.	DIV. RESP	VENDOR	BLDG ELEV	AVAIL INSP	QUAL REPT	QUAL METH	FREQ	TYPE HTNG	SAFE SHTDN	QUAL STATUS
1X61*FLT-02	CRAC FILTER TRAINS	105-1	PD	FARR CO	063	YES	D-56302	SA/SAT	17	F2	CS,HS	H
1X61*FN-025	CONTROL ROOM BOOSTER F	102-2	PD	BUFFALO FORGE	063	YES	745-4234A	SA	27	F2	CS,HS	H
1X61*FS 011	FN-25 CNTRL	319-4	ED	POWERS REG	063	YES	43812-1	HBT	24	F2	CS,HS	H
1X61*FS 012	ACU-7 AIR FLOW	319-4	ED	POWERS REG	063	YES	43812-1	HBT	24	F3	CS,HS	H
1X61*HS 038	1X61*AOV038 CONTROL	319-4	ED	POWERS REG	066	YES	43812-1	HBT	24	F2	CS,HS	H
1X61*HE-021	ACU-7 CNTRL	319-4	ED	POWERS REG	063	YES	43812-1	HBT	24	F2	CS,HS	H
1X61*HOD033	FN-25 DISCH AIR	319-4	ED	POWERS REG	063	YES	44540-1	HBT	27	F2	N	H
1X61*HOD034	ACU-7 DISCHARGE AIR	319-4	ED	POWERS REG	063	YES	43812-1	HBT	24	F2	CS,HS	H
1X61*HOV031	CNTRL RH ISOL	111-2	PD	FISHER	063	YES	CD75-35	SA/SAT	22+	P2	CS	H
1X61*HOV032	CNTRL RH ISOL	111-2	PD	FISHER	063	YES	CD75-35	SA/SAT	22+	P2	CS	H
1X61*TCV021	ACU-7A COOLING UNIT	310-2	CD	FISHER CONT.	071	YES	2-24451	SA	25	P2	CS	H
1X61*TE 021	ACU COOLING CONT	406-1	CD	ROSEMOUNT	067	YES	2767	SAT	35+	F2	CS,HS	H
1Z93*THU502	TRIP/CALIB UNIT	406-5	CD	ROSEMOUNT	063	YES	127531	SAT	57+	F4	CS	H
1Z95*ENC SX1	SXS ENCLOSURE	125-10	CD	RELIANCE	044	YES	99AX400327	SA	61	F	N	F
1Z95*ENC SX2	SXS ENCLOSURE	125-10	CD	RELIANCE	044	YES	99AX400827	SA	61	F	N	F
1Z95*ENC SX3	SXS ENCLOSURE	125-10	CD	RELIANCE	044	YES	99AX400827	SA	61	F	N	F
1Z97*PNLER1	MULTIPLEX CAB	125-11	CD	RELIANCE	044	YES	99AX401437	SA	14	F	N	E
1Z97*PNLER2	MULTIPLEX CAB	125-11	CD	RELIANCE	044	YES	99AX401437	SA	14	F	N	E

CS =COLD SHUT DOWN  
DA =DYNAMIC ANALYSIS  
F =FLOOR MOUNTED  
HS =HOT STANDBY  
HBT=MULTI-FREQUENCY  
BIAXIAL TESTING  
HST=MULTI-FREQUENCY  
SINGLE AXIAL TESTING

P =PIPE MOUNTED  
\* TEST ARTICLE  
QP =QUALIFIED BY  
PIPING ANALYSIS  
SA =STATIC ANALYSIS  
SAT=SINGLE FREQUENCY  
SINGLE AXIAL TESTING

SBT=SINGLE FREQUENCY  
BIAXIAL TESTING  
N =NEITHER CS OR HS  
Z =PASSIVE ITEM  
(SQRT PAPER NOT  
REQ'D)

QUALIFICATION MILESTONES  
A =REEVALUATION COMPLETE  
B =REQUEST FOR QUAL OR BID ISSUED  
C =S/W RECOMMENDATION TO LILCO  
D =QUAL DOC RECEIVED  
E =HARDWARE MODIFICATION REQ'D  
F =QUAL DOC APVD & FILED  
G =SQRT PAPER COMPLETE  
H =COPIES OF DOC TO DISTRIBUTION

REVISION 17 DECEMBER 1983

NOTE: NUMBER IN  
'TYPE HTNG' COLUMN IS  
QUANTITY OF ITEMS.

SHOREHAM UNIT 1  
JOB NUMBER 1160002  
LILCO DOCKET 50-322

RBM LIST  
1-SORT  
ACTIVE

STONE & WEBSTER ENGINEERING CORPORATION  
REACTOR BUILDING CATEGORY I PIPE MOUNTED EQUIPMENT  
BOP QUALIFICATION LEVEL (393 ITEMS)  
IS-316

RUN DATE 12/21/83  
P/H TIME 16.31.36  
PAGE 1

1 MARK NUMBER	PIPE SIZE	2 QUAL REPT	3 SPEC NO.	4 LOC.	5 OPER LOAD-G'S		OPERATOR	6 MODEL NO.	7 8 QUAL STATUS	
					HOR	VER			YCR	OPER
1B21*MOV031	3/1	SR-6060	88V-2	PC	2.4	.8	LIMITORQUE	SHB-00-10	H	H
1B21*MOV032	3/1	SR-6060	88V-2	SC	3.5	1.4	LIMITORQUE	SHB-000-5 *	H	H
1B21*MOV034	3	SR-6060	88V-2	SC	1.4	1.9	LIMITORQUE	SHB-00-7.5	H	H
1B21*MOV035A	20/1	20-1500GL09	88AD-11	SC	2.8	1.1	LIMITORQUE	SHB-1-40	H	H
1B21*MOV035B	20/1	20-1500GL09	88AD-11	SC	3.9	2.2	LIMITORQUE	SHB-1-40	H	H
1B21*MOV061	2/1	SR-6188	253-1	SC	2.0	1.1	LIMITORQUE	SHB-00-10	H	H
1B21*MOV062	2/1	SR-6188	253-1	SC	1.5	1.7	LIMITORQUE	SHB-00-10	H	H
1B21*MOV063	2/1	SR-6188	253-1	SC	2.1	1.3	LIMITORQUE	SHB-00-10	H	H
1B21*MOV064	2/1	SR-6188	253-1	SC	2.0	1.3	LIMITORQUE	SHB-00-10	H	H
1B21*MOV068A	2/1	SR-6188	253-1	SC	1.6	1.0	LIMITORQUE	SHB-000-5	H	H
1B21*MOV068B	2/1	SR-6188	253-1	SC	1.6	1.8	LIMITORQUE	SHB-000-5	H	H
1B21*MOV068C	2/1	SR-6188	253-1	SC	1.9	1.0	LIMITORQUE	SHB-000-5	H	H
1B21*MOV068D	2/1	SR-6188	253-1	SC	1.5	1.2	LIMITORQUE	SHB-000-5	H	H
1B21*MOV083	2/1	SR-6188	253-1	PC	3.0	2.8	LIMITORQUE	SHB-000-5	H	H
1B21*MOV084	2/1	SR-6188	253-1	PC	4.9	2.0	LIMITORQUE	SHB-000-5	H	H
1B21*MOV085	2/1	SR-6188	253-1	PC	4.3	1.9	LIMITORQUE	SHB-000-5	H	H
1B21*SOV313A	.75	HR5265683271	310979	SC	1.5	1.3	—	—	H	—
1B21*SOV313B	.75	HR5265683271	310979	SC	1.5	1.3	—	—	H	—
1B21*SOV314A	.75	HR5265683271	310979	SC	1.5	1.3	—	—	H	—

QUALIFICATION MILESTONES

NOTES

REVISION 17 DECEMBER 1983

A = REEVALUATION COMPLETE  
B = REQUEST FOR QUAL OR BID ISSUED  
C = S/H RECOMMENDATION TO LILCO  
D = QUAL DOC RECEIVED  
E = HARDWARE MODIFICATION REQ'D  
F = QUAL DOC APVD & FILED  
G = SORT PAPER COMPLETE  
H = COPIES OF DOC TO DISTRIBUTION

- CL 2 AND 3 VALVES < OR = 2 IN. ARE FLOOR-MOUNTED (ENTP-9.5)
- \* = DC MOTOR. ALL OTHERS ARE AC
- CL 1 VALVES < OR = 1 IN. ARE FLOOR-MOUNTED (ENTP-9.5)
- 2/1 = 2 IN. CLASS 1

SHOREHAM 1  
JOB NUMBER 1160002  
LILCO DOCKET 50-322

RBPM LIST  
1-SORT  
ACTIVE

STONE & WEBSTER ENGINEERING CORPORATION  
REACTOR BUILDING CATEGORY I PIPE MOUNTED EQUIPMENT  
BOP QUALIFICATION LEVEL (393 ITEMS)  
IS-316

RUN DATE 12/21/83  
RUN TIME 16.31.36  
PAGE 2

1 MARK NUMBER	PIPE SIZE	2 QUAL REPT	3 SPEC NO.	4 LOC.	5 OPER LOAD-G'S		OPERATOR		6 MODEL NO.	7	8
					HOR	VER	SUPPLIER			QUAL	STATUS
1B21*SOV314B	.75	HR5265683271	310979	SC	1.5	1.3	---		---	H	-
1B31*AOV081	.75	10.3.115	318-1	PC	6.9	3.0	COPEL		D-100-60	H	H
1B31*AOV082	.75	10.3.115	318-1	SC	1.5	1.3	COPEL		D-100-60	H	H
1C41*RV021A	1.5	502644	191	SC	2.2	2.1	---		---	H	-
1C41*RV021B	1.5	502644	191	SC	2.0	1.9	---		---	H	-
1D11*HOV032A	1	SR-6190	253-3	PC	2.3	.7	LIMITORQUE		SHB-000-2	H	H
1D11*HOV032B	1	SR-6190	253-3	SC	2.3	.7	LIMITORQUE		SHB-000-2	H	H
1D11*HOV033A	1	SR-6190	253-3	PC	2.3	.7	LIMITORQUE		SHB-000-2	H	H
1D11*HOV033B	1	SR-6190	253-3	SC	2.3	.7	LIMITORQUE		SHB-000-2	H	H
1E11*AOV061A	.75	10.3.115	318-5	SC	2.3	.7	COPEL		D-100-60	H	H
1E11*AOV061B	.75	10.3.115	318-5	SC	2.3	.7	COPEL		D-100-60	H	H
1E11*AOV062A	.75	10.3.115	318-5	SC	2.3	.7	COPEL		D-100-60	H	H
1E11*AOV062B	.75	10.3.115	318-5	SC	2.3	.7	COPEL		D-100-60	H	H
1E11*HOV031A	20	E5836-1,2	88AD-7	SC	6.8	1.1	LIMITORQUE		SHB-0-40	H	H
1E11*HOV031B	20	E5836-1,2	88AD-7	SC	4.6	.9	LIMITORQUE		SHB-0-40	H	H
1E11*HOV031C	20	E5836-1,2	88AD-7	SC	7.6	.5	LIMITORQUE		SHB-0-40	H	H
1E11*HOV031D	20	E5836-1,2	88AD-7	SC	4.4	.9	LIMITORQUE		SHB-0-40	H	H
1E11*HOV032A	20	E5836-1,2	88AD-7	SC	5.1	1.8	LIMITORQUE		SHB-0-40	H	H
1E11*HOV032B	20	E5836-1,2	88AD-7	SC	2.8	2.7	LIMITORQUE		SHB-0-40	H	H

QUALIFICATION MILESTONES

NOTES

REVISION 17 DECEMBER 1983

A =REEVALUATION COMPLETE  
B =REQUEST FOR QUAL OR BID ISSUED  
C =S/W RECOMMENDATION TO LILCO  
D =QUAL DOC RECEIVED  
E =HARDWARE MODIFICATION REQ'D  
F =QUAL DOC APVD & FILED  
G =SORT PAPER COMPLETE  
H =COPIES OF DOC TO DISTRIBUTION

- CL 2 AND 3 VALVES < OR = 2 IN. ARE FLOOR-MOUNTED (EHMP-9.5)
- \* = DC MOTOR. ALL OTHERS ARE AC
- CL 1 VALVES < OR = 1 IN. ARE FLOOR-MOUNTED (EHMP-9.5)
- 2/1 = 2 IN. CLASS 1

SHOREHAM 1  
JOB NUMBER 1160002  
LILCO DOCKET 50-322

RBPM LIST  
1-SORT  
ACTIVE

STONE & WEBSTER ENGINEERING CORPORATION  
REACTOR BUILDING CATEGORY I PIPE MOUNTED EQUIPMENT  
BOP QUALIFICATION LEVEL (393 ITEMS)  
IS-316

RUN DATE 12/21/83  
RUN TIME 16.31.36  
PAGE 3

1 MARK NUMBER	PIPE SIZE	2 QUAL REPT	3 SPEC NO.	4 LOC.	5 OPER LOAD-G'S		OPERATOR	6 MODEL NO.	7 8 QUAL STATUS	
					HOP	VER			YOKE	OPER
1E11*MOV032C	20	E5836-1.2	88AD-7	SC	5.4	6.7	LIMITORQUE	SHB-0-40	H	H
1E11*MOV032D	20	E5836-1.2	88AD-7	SC	2.6	3.9	LIMITORQUE	SHB-0-40	H	H
1E11*MOV033A	16	SR-6266	88V-20	SC	2.9	1.4	LIMITORQUE	SHB-1-60	H	H
1E11*MOV033B	16	SR-6266	88V-20	SC	2.9	2.1	LIMITORQUE	SHB-1-60	H	H
1E11*MOV034A	18	18-300A	88AD-6	SC	2.0	1.7	LIMITORQUE	SHB-3-150	H	H
1E11*MOV034B	18	18-300A	88AD-6	SC	1.9	1.5	LIMITORQUE	SHB-3-150	H	H
1E11*MOV035A	16	SR-6266	88V-20	SC	2.4	1.6	LIMITORQUE	SHB-1-60	H	H
1E11*MOV035B	16	SR-6266	88V-20	SC	3.1	2.3	LIMITORQUE	SHB-1-60	H	H
1E11*MOV036A	24	E5836-19	88AD-10	SC	3.8	3.0	LIMITORQUE	SHB-4-200	H	H
1E11*MOV036B	24	E5836-19	88AD-10	SC	6.6	2.1	LIMITORQUE	SHB-4-200	H	H
1E11*MOV037A	24/1	2422900GT07	88AD-9	SC	5.5	6.6	LIMITORQUE	SB-4-200	H	H
1E11*MOV037B	24/1	2422900GT07	88AD-9	SC	4.2	4.4	LIMITORQUE	SB-4-200	H	H
1E11*MOV038A	10	E5836-20	88AD-2	SC	5.7	1.3	LIMITORQUE	SHB-2-60	H	H
1E11*MOV038B	10	E5836-20	88AD-2	SC	3.5	1.2	LIMITORQUE	SHB-2-60	H	H
1E11*MOV039A	10	SR-6082	88V-16	SC	6.8	2.3	LIMITORQUE	SHB-0-25	H	H
1E11*MOV039B	10	SR-6082	88V-16	SC	4.4	3.6	LIMITORQUE	SHB-0-25	H	H
1E11*MOV040A	16	SR-6266	88V-20	SC	9.7	7.9	LIMITORQUE	SHB-1-60	H	H
1E11*MOV040B	16	SR-6266	88V-20	SC	7.9	3.5	LIMITORQUE	SHB-1-60	H	H
1E11*MOV041A	6	SR-6177	88V-6	SC	2.0	1.4	LIMITORQUE	SHB-00-15	H	H

QUALIFICATION MILESTONES

NOTES

REVISION 17 DECEMBER 1983

A = REEVALUATION COMPLETE  
B = REQUEST FOR QUAL OR BID ISSUED  
C = S/W RECOMMENDATION TO LILCO  
D = QUAL DOC RECEIVED  
E = HARDWARE MODIFICATION REQ'D  
F = QUAL DOC APVD & FILED  
G = SORT PAPER COMPLETE  
H = COPIES OF DOC TO DISTRIBUTION

- CL 2 AND 3 VALVES < OR = 2 IN. ARE FLOOR-MOUNTED (EHDP-9.5)
- \* = DC MOTOR. ALL OTHERS ARE AC
- CL 1 VALVES < OR = 1 IN. ARE FLOOR-MOUNTED (EHDP-9.5)
- 2/1 = 2 IN. CLASS 1

SHOREHAM UNIT 1  
JOB NUMBER 1160002  
LILCO DOCKET 50-322

RBPB LIST  
1-SORT  
ACTIVE

STONE & WEBSTER ENGINEERING CORPORATION  
REACTOR BUILDING CATEGORY I PIPE MOUNTED EQUIPMENT  
BOP QUALIFICATION LEVEL (393 ITEMS)  
IS-316

RUN DATE 12/21/83  
RUN TIME 16.31.36  
PAGE 4

1 MARK NUMBER	PIPE SIZE	2 QUAL REPT	3 SPEC NO.	4 LOC.	5 OPER LOAD-G'S		OPERATOR SUPPLIER	6 MODEL NO.	7 8 QUAL STATUS	
					HOR	VER			YOKE	OPEN
1E11*MOV041B	6	SR-6177	88V-6	SC	8.5	3.1	LIMITORQUE	SHB-00-15	H	H
1E11*MOV042A	16	E5836-4	88AD-5	SC	4.0	5.1	LIMITORQUE	SHB-3-80	H	H
1E11*MOV042B	16	E5836-4	88AD-5	SC	3.1	4.2	LIMITORQUE	SHB-3-80	H	H
1E11*MOV043A	4	SR-6180	88V-4	SC	1.1	.5	LIMITORQUE	SHB-00-15	H	H
1E11*MOV043B	4	SR-6180	88V-4	SC	1.4	.9	LIMITORQUE	SHB-00-15	H	H
1E11*MOV044A	4	SR-6180	88V-4	SC	1.2	.9	LIMITORQUE	SHB-00-15	H	H
1E11*MOV044B	4	SR-6180	88V-4	SC	1.4	1.3	LIMITORQUE	SHB-00-15	H	H
1E11*MOV045A	4	SR-6180	88V-4	SC	1.4	.4	LIMITORQUE	SHB-000-5	H	H
1E11*MOV045B	4	SR-6180	88V-4	SC	1.4	.6	LIMITORQUE	SHB-000-5	H	H
1E11*MOV047	20/1	20900-GT06	88AD-8	PC	6.0	3.2	LIMITORQUE	SB-2-60	H	H
1E11*MOV048	20/1	20900-GT06	88AD-8	SC	3.8	3.0	LIMITORQUE	SB-2-60 *	H	H
1E11*MOV049	10	SR-6260	88V-12	SC	2.5	2.0	LIMITORQUE	SHB-2-80	H	H
1E11*MOV050	20	SR-6425	88V-15	SC	8.6	3.9	LIMITORQUE	SHB-2-60	H	H
1E11*MOV051	4	SR-6180	88V-4	SC	1.1	1.0	LIMITORQUE	SHB-00-7 1/2 *	H	H
1E11*MOV052	4	SR-6180	88V-4	SC	1.6	1.2	LIMITORQUE	SHB-00-10	H	H
1E11*MOV053	4	SR-6068	88V-11	SC	4.8	2.9	LIMITORQUE	SHB-00-10 *	H	H
1E11*MOV054	4/1	SR-6068	88V-11	PC	4.6	1.5	LIMITORQUE	SHB-00-15	H	H
1E11*MOV055A	1	SR-6190	253-3	SC	2.3	.7	LIMITORQUE	SHB-000-2	H	H
1E11*MOV055B	1	SR-6190	253-3	SC	2.3	.7	LIMITORQUE	SHB-000-2	H	H

QUALIFICATION MILESTONES

NOTES

REVISION 17 DECEMBER 1983

A = REEVALUATION COMPLETE  
B = REQUEST FOR QUAL OR BTD ISSUED  
C = S/W RECOMMENDATION TO LILCO  
D = QUAL DOC RECEIVED  
E = HARDWARE MODIFICATION REQ'D  
F = QUAL DOC APVD & FILED  
G = SORT PAPER COMPLETE  
H = COPIES OF DOC TO DISTRIBUTION

- CL 2 AND 3 VALVES < OR = 2 IN. ARE FLOOR-MOUNTED (EHF-9.5)
- \* = DC MOTOR. ALL OTHERS ARE AC
- CL 1 VALVES < OR = 1 IN. ARE FLOOR-MOUNTED (EHF-9.5)
- 2/1 = 2 IN. CLASS 1

SHOREHAM UNIT 1  
JOB NUMBER 1160002  
LILCO DOCKET 50-322

RBPH LIST  
1-SORT  
ACTIVE

STONE & WEBSTER ENGINEERING CORPORATION  
REACTOR BUILDING CATEGORY I PIPE MOUNTED EQUIPMENT  
BOP QUALIFICATION LEVEL (393 ITEMS)  
IS-316

RUN DATE 12/21/83  
RUN TIME 16.31.36  
PAGE 5

1 MARK NUMBER	PIPE SIZE	2 QUAL REPT	3 SPEC NO.	4 LOC.	5 OPER LOAD-G'S		6 OPERATOR		7 8 QUAL STATUS	
					HOR	VER	SUPPLIER	MODEL NO.	YOKE	OPER
1E11*MOV056A	1	SR-6190	253-3	SC	2.3	.7	LIMITORQUE	SHB-000-2	H	H
1E11*MOV056B	1	SR-6190	253-3	SC	2.3	.7	LIMITORQUE	SHB-000-2	H	H
1E11*MOV057A	1	SR-6190	253-3	SC	2.3	.7	LIMITORQUE	SHB-000-2	H	H
1E11*MOV057B	1	SR-6190	253-3	SC	2.3	.7	LIMITORQUE	SHB-000-2	H	H
1E11*PCV003A	10	10.3.115	318-2	SC	2.6	1.9	COPEES	D-100-160	H	H
1E11*PCV003B	10	10.3.115	318-2	SC	1.1	.6	COPEES	D-100-160	H	H
1E11*PCV007A	4	10.3.115	318-5	SC	1.0	.8	COPEES	D-100-100	H	H
1E11*PCV007B	4	10.3.115	318-5	SC	1.1	.9	COPEES	D-100-100	H	H
1E11*RV151A	1	502644	191	SC	1.5	1.3	—	—	H	—
1E11*RV151B	1	502644	191	SC	1.5	1.3	—	—	H	—
1E11*RV151C	1	502644	191	SC	1.5	1.3	—	—	H	—
1E11*RV151D	1	502644	191	SC	1.5	1.3	—	—	H	—
1E11*RV152A	4	502644	191	SC	4.0	2.3	—	—	H	—
1E11*RV152B	4	502644	191	SC	1.1	.9	—	—	H	—
1E11*RV153A	1	502644	191	SC	1.5	1.3	—	—	H	—
1E11*RV153B	1	502644	191	SC	1.5	1.3	—	—	H	—
1E11*RV154	1	502644	191	SC	1.5	1.3	—	—	H	—
1E11*RV155	2	502644	191	SC	1.5	1.3	—	—	H	—
1E11*RV162A	1	502644	191	SC	1.5	1.3	—	—	H	—

QUALIFICATION MILESTONES

NOTES

REVISION 17 DECEMBER 1983

A = REEVALUATION COMPLETE  
B = REQUEST FOR QUAL OR BID ISSUED  
C = S/W RECOMMENDATION TO LILCO  
D = QUAL DOC RECEIVED  
E = HARDWARE MODIFICATION REQ'D  
F = QUAL DOC APVD & FILED  
G = SORT PAPER COMPLETE  
H = COPIES OF DOC TO DISTRIBUTION

- CL 2 AND 3 VALVES < OR = 2 IN. ARE FLOOR-MOUNTED (ENTP-9.5)
- \* = DC MOTOR. ALL OTHERS ARE AC
- CL 1 VALVES < OR = 1 IN. ARE FLOOR-MOUNTED (ENTP-9.5)
- 2/1 = 2 IN. CLASS 1

SHOREHAM UNIT 1  
JOB NUMBER 1160002  
LILCO DOCKET 50-322

RBPH LIST  
1-SORT  
ACTIVE

STONE & WEBSTER ENGINEERING CORPORATION  
REACTOR BUILDING CATEGORY I PIPE MOUNTED EQUIPMENT  
BOP QUALIFICATION LEVEL (393 ITEMS)  
IS-316

RUN DATE 12/21/83  
RUN TIME 16.31.36  
PAGE 6

1 MARK NUMBER	PIPE SIZE	2 QUAL REPT	3 SPEC NO.	4 LOC.	5 OPER LOAD-G'S		OPERATOR		7 8 QUAL STATUS	
					HOR	VER	SUPPLIER	MODEL NO.	YOKE	OPER
1E11*RV162B	1	502644	191	SC	1.5	1.3	---	---	H	-
1E11*RV163	.75	502644	191	SC	1.5	1.3	---	---	H	-
1E11*RV164	.75	502644	191	SC	1.5	1.3	---	---	H	-
1E11*SOV166A	.75	HR5265683271	310979	SC	1.5	1.3	---	---	H	-
1E11*SOV166B	.75	HR5265683271	310979	SC	1.5	1.3	---	---	H	-
1E11*SOV167A	.75	HR5265683271	310979	SC	1.5	1.3	---	---	H	-
1E11*SOV167B	.75	HR5265683271	310979	SC	1.5	1.3	---	---	H	-
1E11*SOV168	.75	HR5265683271	310979	SC	1.5	1.3	---	---	H	-
1E11*SOV169	.75	HR5265683271	310979	SC	1.5	1.3	---	---	H	-
1E21*MOV031A	14	E5836-7	88AD-3	SC	2.4	2.0	LIMITORQUE	SHB-000-5	H	H
1E21*MOV031B	14	E5836-7	88AD-3	SC	2.0	.3	LIMITORQUE	SHB-000-5	H	H
1E21*MOV033A	10/1	SR-6259	88V-13	SC	6.9	1.2	LIMITORQUE	SHB-2-80	H	H
1E21*MOV033B	10/1	SR-6259	88V-13	SC	7.6	2.5	LIMITORQUE	SHB-2-80	H	H
1E21*MOV034A	3	SR-6183	88V-1	SC	1.4	.5	LIMITORQUE	SHB-000-5	H	H
1E21*MOV034B	3	SR-6183	88V-1	SC	3.4	1.4	LIMITORQUE	SHB-000-5	H	H
1E21*MOV035A	10	10-300GL	88AD-1	SC	1.0	2.9	LIMITORQUE	SHB-1-40	H	H
1E21*MOV035B	10	10-300GL	88AD-1	SC	1.0	2.9	LIMITORQUE	SHB-1-40	H	H
1E21*RV092A	.75	502644	191	SC	1.5	1.3	---	---	H	-
1E21*RV092B	.75	502644	191	SC	1.5	1.3	---	---	H	-

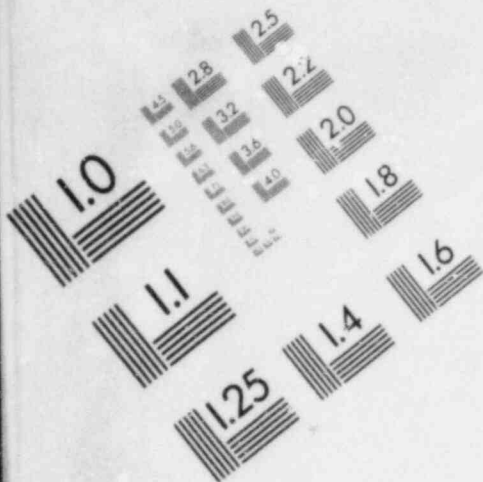
QUALIFICATION MILESTONES

NOTES

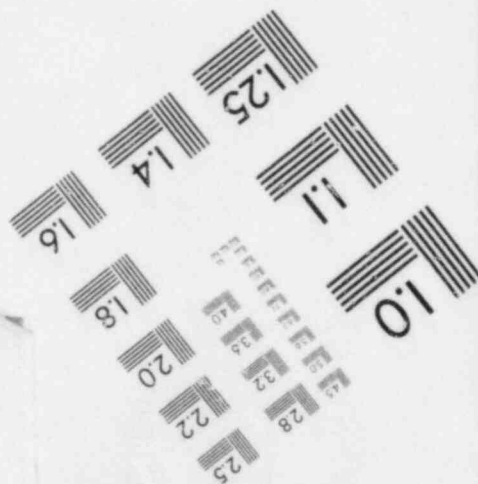
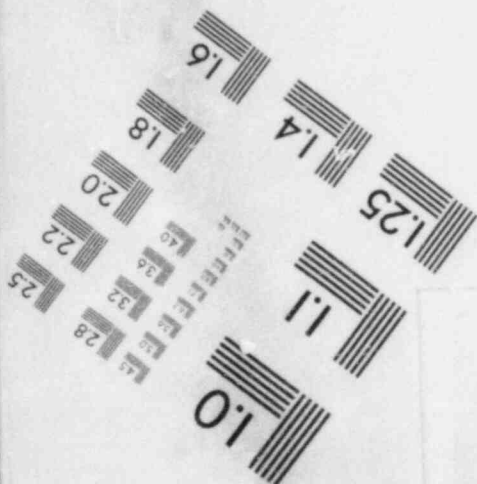
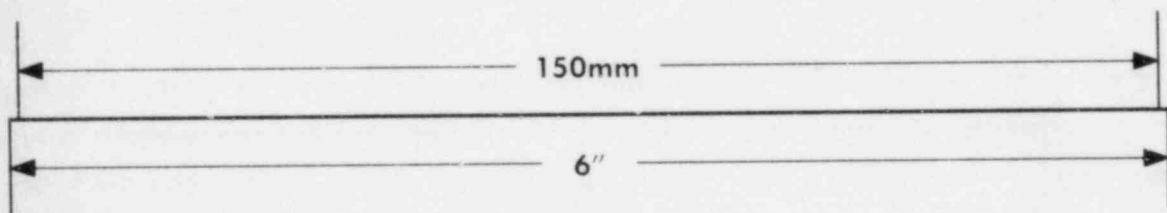
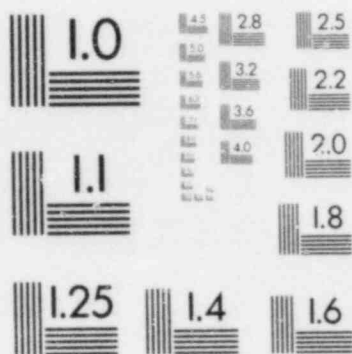
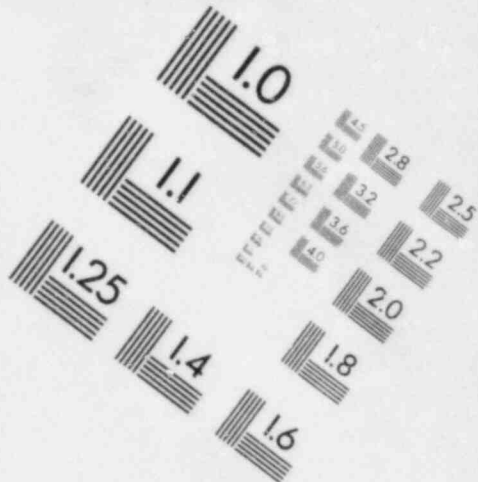
REVISION 17 DECEMBER 1983

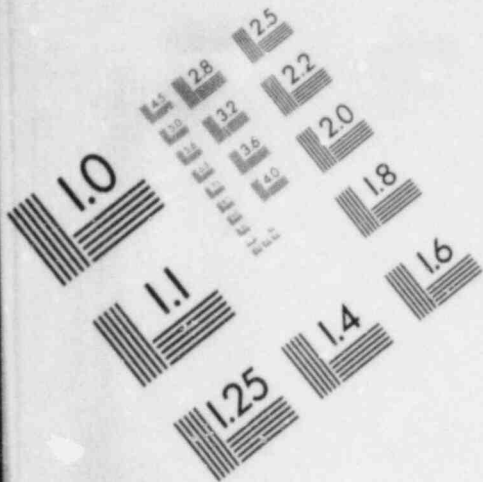
A = REEVALUATION COMPLETE  
B = REQUEST FOR QUAL OR BID ISSUED  
C = S/W RECOMMENDATION TO LILCO  
D = QUAL DOC RECEIVED  
E = HARDWARE MODIFICATION REQ'D  
F = QUAL DOC APVD & FILED  
G = SORT PAPER COMPLETE  
H = COPIES OF DOC TO DISTRIBUTION

- CL 2 AND 3 VALVES < OR = 2 IN. ARE FLOOR-MOUNTED (EHTP-9.5)
- \* = DC MOTOR. ALL OTHERS ARE AC
- CL 1 VALVES < OR = 1 IN. ARE FLOOR-MOUNTED (EHTP-9.5)
- 2/1 = 2 IN. CLASS 1

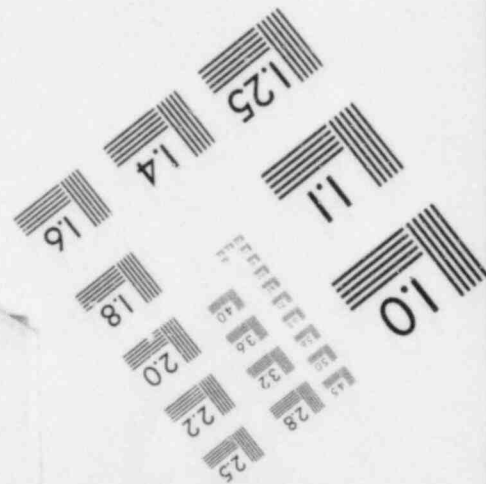
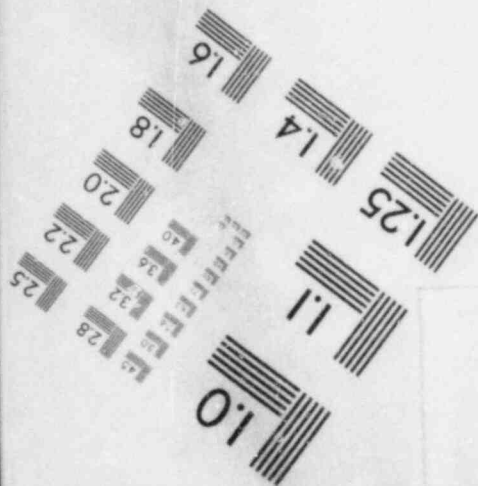
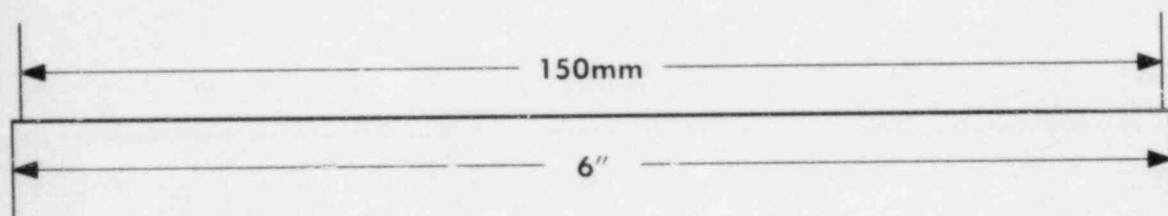
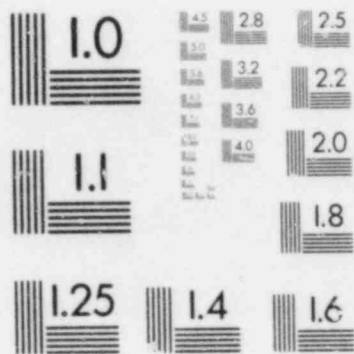
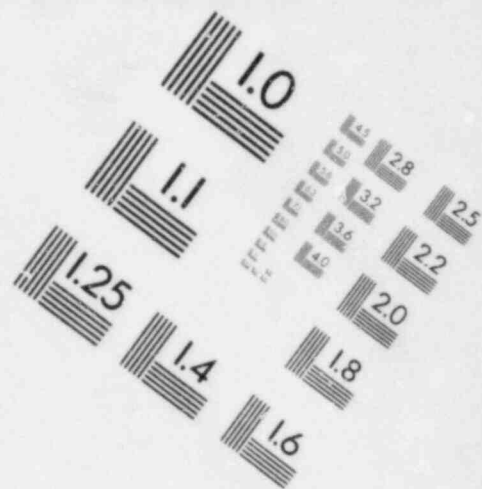


# IMAGE EVALUATION TEST TARGET (MT-3)





# IMAGE EVALUATION TEST TARGET (MT-3)



SHOREHAM UNIT 1  
JOB NUMBER 1160002  
LILCO DOCKET 50-322

RDPH LIST  
1-SORT  
ACTIVE

STONE & WEBSTER ENGINEERING CORPORATION  
REACTOR BUILDING CATEGORY I PIPE MOUNTED EQUIPMENT  
BOP QUALIFICATION LEVEL (393 ITEMS)  
IS-316

RUN DATE 12/21/83  
RUN TIME 16.31.36  
PAGE 7

1 MARK NUMBER	PIPE SIZE	2 QUAL REPT	3 SPEC NO.	4 LOC.	5 OPER LOAD-G'S		OPERATOR	6 MODEL NO.	7 8 QUAL STATUS	
					HOR	VER			YOKE	OPER
1E21WRV093A	1.5	502644	191	SC	1.5	1.3	---	---	H	-
1E21WRV093B	1.5	502644	191	SC	1.5	1.3	---	---	H	-
1E21WRV096A	.75	502644	191	SC	1.5	1.3	---	---	H	-
1E21WRV096B	.75	502644	191	SC	1.5	1.3	---	---	H	-
1E32WMOV021A	1.5/1	SR-6706	253-4	SC	2.7	1.4	LIMITORQUE	SHC-04-5	H	H
1E32WMOV021B	1.5/1	SR-6706	253-4	SC	3.0	2.1	LIMITORQUE	SHC-04-5	H	H
1E32WMOV021C	1.5/1	SR-6706	253-4	SC	2.7	2.6	LIMITORQUE	SHC-04-5	H	H
1E32WMOV021D	1.5/1	SR-6706	253-4	SC	2.6	1.6	LIMITORQUE	SHC-04-5	H	H
1E32WMOV022A	1.5/2	SR-6706	253-4	SC	2.4	1.6	LIMITORQUE	SHC-04-3	H	H
1E32WMOV022B	1.5/2	SR-6706	253-4	SC	2.1	1.9	LIMITORQUE	SHC-04-3	H	H
1E32WMOV022C	1.5/2	SR-6706	253-4	SC	2.4	3.0	LIMITORQUE	SHC-04-3	H	H
1E32WMOV022D	1.5/2	SR-6706	253-4	SC	2.6	.5	LIMITORQUE	SHC-04-3	H	H
1E32WMOV023A	1.5/2	SR-6706	253-4	SC	2.3	.7	LIMITORQUE	SHC-04-3	H	H
1E32WMOV023B	1.5/2	SR-6706	253-4	SC	2.3	.7	LIMITORQUE	SHC-04-3	H	H
1E32WMOV023C	1.5/2	SR-6706	253-4	SC	2.3	.7	LIMITORQUE	SHC-04-3	H	H
1E32WMOV023D	1.5/2	SR-6706	253-4	SC	2.3	.7	LIMITORQUE	SHC-04-3	H	H
1E32WMOV024	2/2	SR-6188	253-1	SC	5.7	2.6	LIMITORQUE	SHB-000-5	H	H
1E32WMOV025	2/2	SR-6188	253-1	SC	2.3	.7	LIMITORQUE	SHB-000-5	H	H
1E32WMOV026	2/2	SR-6188	253-1	SC	6.2	2.8	LIMITORQUE	SHB-000-5	H	H

QUALIFICATION MILESTONES

NOTES

REVISION 17 DECEMBER 1983

A = REEVALUATION COMPLETE  
B = REQUEST FOR QUAL OR BID ISSUED  
C = S/W RECOMMENDATION TO LILCO  
D = QUAL DOC RECEIVED  
E = HARDWARE MODIFICATION REQ'D  
F = QUAL DOC APVD & FILED  
G = SORT PAPER COMPLETE  
H = COPIES OF DOC TO DISTRIBUTION

- CL 2 AND 3 VALVES < OR = 2 IN. ARE FLOOR-MOUNTED (ENTP-9.5)
- \* = DC MOTOR. ALL OTHERS ARE AC
- CL 1 VALVES < OR = 1 IN. ARE FLOOR-MOUNTED (ENTP-9.5)
- 2/1 = 2 IN. CLASS 1

SHOREHAM UNIT 1  
JOB NUMBER 1160002  
LILCO DOCKET 50-322

REPM LIST  
1-SORT  
ACTIVE

STONE & WEBSTER ENGINEERING CORPORATION  
REACTOR BUILDING CATEGORY I PIPE MOUNTED EQUIPMENT  
BOP QUALIFICATION LEVEL (393 I'EHS)  
IS-316

RUN DATE 12/21/93  
RUN TIME 16.31.36  
PAGE 8

1 MARK NUMBER	PIPE SIZE	2 QUAL REPT	3 SPEC NO.	4 LOC.	5 OPER LOAD-G'S		OPERATOR	6 MODEL NO.	7 8 QUAL STATUS	
					HOR	VER			YOKE	OPER
1E32*HOV027	2/2	SR-6188	253-1	SC	2.3	.7	LIMITORQUE	SHB-000-5	H	H
1E41*AOV081	1	10.3.115	318-5	SC	2.3	.7	COPE5	D-100-60	H	H
1E41*AOV082	1	10.3.115	318-5	SC	2.3	.7	COPE5	D-100-60	H	H
1E41*AOV083	1	10.3.115	318-5	SC	2.3	.7	COPE5	D-100-60	H	H
1E41*LCV-091	1	10.3.115	318-5	SC	2.3	.7	COPE5	D-100-60	H	H
1E41*LCV055	1	10.3.115	318-5	SC	2.3	.7	COPE5	D-100-60	H	H
1E41*HOV031	16	SR-6266	88V-20	SC	7.8	2.1	LIMITORQUE	SHB-0-25 *	H	H
1E41*HOV032	16	SR-6266	88V-20	SC	7.5	1.3	LIMITORQUE	SHB-0-25 *	H	H
1E41*HOV034	14	SR-6267	88V-18	SC	6.6	1.6	LIMITORQUE	SHB-2-60 *	H	H
1E41*HOV035	14/1	14900-GT05	88AD-4	SC	5.5	2.4	LIMITORQUE	SHB-3-100 *	H	H
1E41*HOV036	4	SR-6068	88V-11	SC	2.4	1.1	LIMITORQUE	SHB-00-10 *	H	H
1E41*HOV037	8	SR-6349	88V-22	SC	1.8	.8	LIMITORQUE	SHB-1-25 *	H	H
1E41*HOV038	10	SR-6262	88V-14	SC	2.8	1.2	LIMITORQUE	SHB-1-40 *	H	H
1E41*HOV039	2/2	SR-6188	253-1	SC	2.3	.7	LIMITORQUE	SHB-00-5 *	H	H
1E41*HOV041	10/1	SR-6259	88V-13	PC	1.7	2.0	LIMITORQUE	SHB-3-80	H	H
1E41*HOV042	10/1	SR-6264	88V-17	SC	2.6	.9	LIMITORQUE	SHB-1-60 *	H	H
1E41*HOV043	10	SR-6262	88V-14	SC	1.5	.5	LIMITORQUE	SHB-1-60 *	H	H
1E41*HOV044	18	SR-6270	88V-21	SC	4.4	4.5	LIMITORQUE	SHB-0-15 *	H	H
1E41*HOV047	1/1	SR-6190	253-3	PC	2.3	2.5	LIMITORQUE	SHB-000-2	H	H

#### QUALIFICATION MILESTONES

#### NOTES

REVISION 17 DECEMBER 1987

A =REEVALUATION COMPLETE  
B =REQUEST FOR QUAL OR BID ISSUED  
C =S/W RECOMMENDATION TO LILCO  
D =QUAL DOC RECEIVED  
E =HARDWARE MODIFICATION REQ'D  
F =QUAL DOC APVD & FILED  
G =SORT PAPER COMPLETE  
H =COPIES OF DOC TO DISTRIBUTION

1. CL 2 AND 3 VALVES < OR = 2 IN. ARE FLOOR-MOUNTED (ENTP-9.5)
2. \* = DC MOTOR. ALL OTHERS ARE AC
3. CL 1 VALVES < OR = 1 IN. ARE FLOOR-MOUNTED (ENTP-9.5)
4. 2/1 = 2 IN. CLASS 1

SHOREHAM UNIT 1  
JOB NUMBER 1160002  
LILCO DOCKET 50-322

RBPH LIST  
1-SORT  
ACTIVE

STONE & WEBSTER ENGINEERING CORPORATION  
REACTOR BUILDING CATEGORY I PIPE MOUNTED EQUIPMENT  
EOP QUALIFICATION LEVEL (393 ITEMS)  
IS-316

RUN DATE 12/21/83  
RUN TIME 16.31.36  
PAGE 9

1 MARK NUMBER	PIPE SIZE	2 QUAL REPT	3 SPEC NO.	4 LOC.	5 OPER LOAD-G'S		6 OPERATOR		7 8 QUAL STATUS	
					HOR	VER	SUPPLIER	MODEL NO.	YOKE	OPER
1E41*MOV048	1/1	SR-6190	253-3	SC	1.4	2.7	LIMITORQUE	SMB-000-2*	H	H
1E41*MOV049	2/2	SR-6188	253-1	SC	3.9	1.4	LIMITORQUE	SMB-000-2*	H	H
1E41*PCV142	2/2	2-24451	310-2	SC	2.3	.7	BECK	14-101-ES	H	H
1E41*RV145	.75	502644	191	SC	1.5	1.3	—	—	H	—
1E41*RV146	1.5	502644	191	SC	1.5	1.3	—	—	H	—
1E41*RV147	1.25	502644	191	SC	1.5	1.3	—	—	H	—
1E41*RV149	.75	502644	191	SC	1.5	1.3	—	—	H	—
1E51*AOV081	1	10.3.115	318-5	SC	2.3	.7	COPEs	D-100-60	H	H
1E51*AOV082	1	10.3.115	318-5	SC	2.3	.7	COPEs	D-100-60	H	H
1E51*AOV083	1	10.3.115	318-5	SC	2.3	.7	COPEs	D-100-60	H	H
1E51*LCV091	1	10.3.115	318-5	SC	2.3	.7	COPEs	D-100-60	H	H
1E51*LCV095	1	10.3.115	318-5	SC	2.3	.7	COPEs	D-100-60	H	H
1E51*MOV031	6	SR-6177	88V-6	SC	6.2	1.7	LIMITORQUE	SMB-00-5 *	H	H
1E51*MOV032	6	SR-6177	88V-6	SC	6.5	.6	LIMITORQUE	SMB-00-5 *	H	H
1E51*MOV034	4	SR-6068	88V-11	SC	1.2	1.7	LIMITORQUE	SMB-00-10 *	H	H
1E51*MOV035	6/1	SR-6574	88V-5	SC	2.5	4.7	LIMITORQUE	SMB-00-25 *	H	H
1E51*MOV036	2/2	SR-6188	253-1	SC	.9	.7	LIMITORQUE	SMB-000-5 *	H	H
1E51*MOV037	4	SR-6068	88V-11	SC	1.2	.7	LIMITORQUE	SMB-00-10 *	H	H
1E51*MOV038	2/2	SR-6188	253-1	SC	1.3	.5	LIMITORQUE	SMB-000-5 *	H	H

QUALIFICATION MILESTONES

NOTES

REVISION 17 DECEMBER 1983

A = REEVALUATION COMPLETE  
B = REQUEST FOR QUAL OR BID ISSUED  
C = S/W RECOMMENDATION TO LILCO  
D = QUAL DOC RECEIVED  
E = HARDWARE MODIFICATION REQ'D  
F = QUAL DOC APVD & FILED  
G = SORT PAPER COMPLETE  
H = COPIES OF DOC TO DISTRIBUTION

- CL 2 AND 3 VALVES < OR = 2 IN. ARE FLOOR-MOUNTED (EHMP-9.5)
- \* = DC MOTOR. ALL OTHERS ARE AC
- CL 1 VALVES < OR = 1 IN. ARE FLOOR-MOUNTED (EHMP-9.5)
- 2/1 = 2 IN. CLASS 1

SHOREHAM UNIT 1  
JOB NUMBER 1160002  
LILCO DCKET 50-322

RBPM LIST  
1-SORT  
ACTIVE

STONE & WEBSTER ENGINEERING CORPORATION  
REACTOR BUILDING CATEGORY I PIPE MOUNTED EQUIPMENT  
BOP QUALIFICATION LEVEL (393 ITEMS)  
IS-316

RUN DATE 12/21/83  
RUN TIME 16.31.36  
PAGE 10

1 MARK NUMBER	PIPE SIZE	2 QUAL REPT	3 SPEC NO.	4 LOC.	5 OPER LOAD-G'S		OPERATOR		6 MODEL NO.	7 8 QUAL STATUS	
					HOR	VER	SUPPLIER			YOKE	OPER
1E51*MOV041	3/1	SR-6060	88V-2	PC	2.0	2.7	LIMITORQUE		SHB-00-10	H	H
1E51*MOV042	3/1	SR-6060	88V-2	SC	1.6	1.5	LIMITORQUE		SHB-00-7 1/2 *	H	H
1E51*MOV043	3	SR-6060	88V-2	SC	.7	.3	LIMITORQUE		SHB-00-7 1/2 *	H	H
1E51*MOV045	8	SR-6078	88V-10	SC	4.5	7.1	LIMITORQUE		SHB-000-5 *	H	H
1E51*MOV046	2/2	SR-6188	253-1	SC	2.3	.7	LIMITORQUE		SHB-000-2 *	H	H
1E51*MOV047	1/1	SR-6777	253-3	PC	1.4	7.5	LIMITORQUE		SHB-000-2	H	H
1E51*MOV048	1/1	SR-6190	253-3	SC	1.1	1.9	LIMITORQUE		SHB-000-2 *	H	H
1E51*MOV049	1.5/2	SR-6189	253-2	SC	2.6	.8	LIMITORQUE		SHB-000-2 *	H	H
1E51*PCV142	2/2	2-24451	310-2	SC	1.8	.8	BECK		14-101-DBQ	H	H
1E51*RV 145	.75	502644	191	SC	1.5	1.3	---		---	H	-
1E51*RV 146	.75	502644	191	SC	2.6	1.6	---		---	H	-
1E51*RV 147	1.25	502644	191	SC	1.5	1.3	---		---	H	-
1E51*RV 149	.75	502644	191	SC	1.5	1.3	---		---	H	-
1G11*MOV246	4	SR-6180	88V-4	SC	4.3	2.7	LIMITORQUE		SHB-000-5	H	H
1G11*MOV247	4	SR-6180	88V-4	SC	3.6	5.9	LIMITORQUE		SHB-000-5	H	H
1G11*MOV248	3	SR-6183	88V-1	SC	1.7	1.3	LIMITORQUE		SHB-000-5	H	H
1G11*MOV249	3	SR-6183	88V-1	SC	2.5	1.1	LIMITORQUE		SHB-000-5	H	H
1G11*MOV639	3	SR-6477	88V-24	SC	.9	.5	LIMITORQUE		SHB-000-5	H	H
1G33*MOV030A	4/1	SR-6068	88V-11	PC	3.6	2.4	LIMITORQUE		SHB-00-15	H	H

QUALIFICATION MILESTONES

NOTES

REVISION 17 DECEMBER 1983

A =REEVALUATION COMPLETE  
B =REQUEST FOR QUAL OR BID ISSUED  
C =3/W RECOMMENDATION TO LILCO  
D =QUAL DOC RECEIVED  
E =HARDWARE MODIFICATION REQ'D  
F =QUAL DOC APVD & FILED  
G =SQRT PAPER COMPLETE  
H =COPIES OF LOC TO DISTRIBUTION

- CL 2 AND 3 VALVES < OR = 2 IN. ARE FLOOR-MOUNTED (ENTP-9.5)
- \* = DC MOTOR. ALL OTHERS ARE AC
- CL 1 VALVES < OR = 1 IN. ARE FLOOR-MOUNTED (ENTP-9.5)
- 2/1 = 2 IN. CLASS 1

SHOREHAM UNIT 1  
JOB NUMBER 1160002  
LILCO DOCKET 50-322

RBPH LIST  
1-SORT  
ACTIVE

STONE & WEBSTER ENGINEERING CORPORATION  
REACTOR BUILDING CATEGORY I PIPE MOUNTED EQUIPMENT  
BOP QUALIFICATION LEVEL (393 ITEMS)  
IS-316

RUN DATE 12/21/83  
RUN TIME 16.31.36  
PAGE 11

1 MARK NUMBER	PIPE SIZE	2 QUAL REPT	3 SPEC NO.	4 LOC.	5 OPER LOAD-G'S		OPERATOR	6 MODEL NO.	7 8 QUAL STATUS	
					HOR	VER			YOKE	OPER
1G33#HOV030B	4/1	SR-6068	88V-11	PC	7.4	3.3	LIMITORQUE	SHB-00-15	H	H
1G33#HOV031	6/1	SR-6181	88V-8	PC	5.5	2.5	LIMITORQUE	SHB-0-40	H	H
1G33#HOV032	4/1	SR-6068	88V-11	PC	6.5	1.4	LIMITORQUE	SHB-00-10	H	H
1G33#HOV033	6/1	SR-6181	88V-8	PC	8.0	.4	LIMITORQUE	SHB-00-25	H	H
1G33#HOV034	6/1	SR-6181	88V-8	SC	4.6	2.4	LIMITORQUE	SHB-00-15 *	H	H
1G33#HOV035	4	SR-6353	88V-23	SC	1.3	.8	LIMITORQUE	SHB-0-15	H	H
1G33#HOV036	4	SR-6353	88V-23	SC	.9	.5	LIMITORQUE	SHB-0-15	H	H
1G33#HOV037	4	SR-6353	88V-23	SC	.7	.8	LIMITORQUE	SHB-0-15	H	H
1G33#HOV038	4	SR-6068	88V-11	SC	.7	.7	LIMITORQUE	SHB-00-15	H	H
1G33#HOV039	4	SR-6068	88V-11	SC	.6	.6	LIMITORQUE	SHB-00-15	H	H
1G33#HOV040	4	SR-6353	88V-23	SC	1.6	1.0	LIMITORQUE	SHB-0-15	H	H
1G33#HOV041	6/1	SR-6574	88V-3	SC	5.1	3.9	LIMITORQUE	SHB-1-25	H	H
1G33#RV093	.75	502644	191	SC	1.5	1.3	—	—	H	—
1G33#RV095A	.75	502644	191	SC	1.5	1.3	—	—	H	—
1G33#RV095B	.75	502644	191	SC	1.5	1.3	—	—	H	—
1G41#HOV032A	6	1891-1	203	SC	1.3	1.5	LIMITORQUE	SHB-00-10	H	H
1G41#HOV032B	6	1891-1	203	SC	1.1	1.0	LIMITORQUE	SHB-00-10	H	H
1G41#HOV033A	6	SR-6177	88V-6	SC	1.1	1.0	LIMITORQUE	SHB-000-5	H	H
1G41#HOV033B	6	SR-6177	88V-6	SC	1.2	.8	LIMITORQUE	SHB-000-5	H	H

QUALIFICATION MILESTONES

NOTES

REVISION 17 DECEMBER 1983

A =REEVALUATION COMPLETE  
B =REQUEST FOR QUAL OR BID ISSUED  
C =S/W RECOMMENDATION TO LILCO  
D =QUAL DOC RECEIVED  
E =HARDWARE MODIFICATION REQ'D  
F =QUAL DOC APVD & FILED  
G =SORT PAPER COMPLETE  
H =COPIES OF DOC TO DISTRIBUTION

- CL 2 AND 3 VALVES < OR = 2 IN. ARE FLOOR-MOUNTED (ENTP-9.5)
- \* = DC MOTOR. ALL OTHERS ARE AC
- CL 1 VALVES < OR = 1 IN. ARE FLOOR-MOUNTED (ENTP-9.5)
- 2/1 = 2 IN. CLASS 1

SHOREHAM UNIT 1  
JOB NUMBER 1160002  
LILCO DOCKET 50-322

RBPM LIST  
1-SORT  
ACTIVE

STONE & WEBSTER ENGINEERING CORPORATION  
REACTOR BUILDING CATEGORY I PIPE MOUNTED EQUIPMENT  
BOP QUALIFICATION LEVEL (393 ITEMS)  
IS-316

RUN DATE 12/21/83  
RUN TIME 16.31.36  
PAGE 12

1 MARK NUMBER	PIPE SIZE	2 QUAL REPT	3 SPEC NO.	4 LOC.	5 OPER LOAD-G'S		OPERATOR		6 MODEL NO.	7 8 QUAL STATUS	
					HOR	VER	SUPPLIER			YOKE	OPER
1G41WMOV034A	10	SR-6082	88V-16	SC	4.9	1.1	LIMITORQUE		SHB-0-7 1/2	H	H
1G41WMOV034B	10	SR-6082	88V-16	SC	1.8	.5	LIMITORQUE		SHB-0-7 1/2	H	H
1G41WV019A	1	502644	191	SC	1.5	1.3	—		—	H	—
1G41WV019B	1	502644	191	SC	1.5	1.3	—		—	H	—
1G41WV024	1	502644	191	SC	1.5	1.3	—		—	H	—
1G41WV025	1	502644	191	SC	1.5	1.3	—		—	H	—
1P41WMOV033A	20	D-0034-8	197-1	SC	.7	.6	LIMITORQUE		H2BC/SHB0010	H	H
1P41WMOV033B	20	D-0034-8	197-1	SC	.9	.7	LIMITORQUE		H2BC/SHB0010	H	H
1P41WMOV033C	20	D-0034-5	197-1	SC	.8	.4	LIMITORQUE		H2BC/SHB0005	H	H
1P41WMOV033D	20	D-0034-5	197-1	SC	1.1	.7	LIMITORQUE		H2BC/SHB0005	H	H
1P41WMOV034A	20	D-0034-8	197-1	SC	.8	.7	LIMITORQUE		H2BC/SHB010	H	H
1P41WMOV034B	20	D-0034-8	197-1	SC	.1	.1	LIMITORQUE		H2BC/SHB010	H	H
1P41WMOV037A	16	D-0034-2	197-2	SC	.5	.6	LIMITORQUE		H2BC/SHB005	H	H
1P41WMOV037B	16	D-0034-2	197-2	SC	1.0	.7	LIMITORQUE		H2BC/SHB005	H	H
1P41WMOV039A	1/3	1891-1	203	SC	2.3	.7	LIMITORQUE		SHB-000-2	H	H
1P41WMOV039B	1/3	1891-1	203	SC	2.3	.7	LIMITORQUE		SHB-000-2	H	H
1P41WMOV042A	6	D-0034-9	197-3	SC	1.1	1.8	LIMITORQUE		H0BC/SHB002	H	H
1P41WMOV042B	6	D-0034-9	197-3	SC	1.0	1.0	LIMITORQUE		H0BC/SHB002	H	H
1P41WMOV043	1/3	1891-1	203	SC	2.3	.7	LIMITORQUE		SHB-000-2	H	H

QUALIFICATION MILESTONES

NOTES

REVISION 17 DECEMBER 1983

A =PPEVALUATION COMPLETE  
B =REQUEST FOR QUAL OR BID ISSUED  
C =S/H RECOMMENDATION TO LILCO  
D =QUAL DOC RECEIVED  
E =HARDWARE MODIFICATION REQ'D  
F =QUAL DOC APVD & FILED  
G =SORT PAPER COMPLETE  
H =COPIES OF DOC TO DISTRIBUTION

- CL 2 AND 3 VALVES < OR = 2 IN. ARE FLOOR-MOUNTED (EHTP-9.5)
- \* = DC MOTOR. ALL OTHERS ARE AC
- CL 1 VALVES < OR = 1 IN. ARE FLOOR-MOUNTED (EHTP-9.5)
- 2/1 = 2 IN. CLASS 1

SHOREHAM UNIT 1  
JOB NUMBER 1160002  
LILCO DOCKET 50-322

RBPM LIST  
1-SORT  
ACTIVE

STONE & WEBSTER ENGINEERING CORPORATION  
REACTOR BUILDING CATEGORY I PIPE MOUNTED EQUIPMENT  
BOP QUALIFICATION LEVEL (393 ITEMS)  
IS-316

RUN DATE 12/21/83  
RUN TIME 16.31.36  
PAGE 13

1 MARK NUMBER	PIPE SIZE	2 QUAL REPT	3 SPEC NO.	4 LOC.	5 OPER LOAD-G'S		OPERATOR		6 MODEL NO.	7 8 QUAL STATUS	
					HOR	VER	SUPPLIER			YOKE	OPER
1P41*HOV102A	1/3	1891-1	203	SC	2.3	.7	LIMITORQUE		SHB-000-2	H	H
1P41*HOV102B	1/3	1891-1	203	SC	2.3	.7	LIMITORQUE		SHB-000-2	H	H
1P41*HOV129A	10	15438	281	SC	1.0	1.3	LIMITORQUE		H1BC/SHB0002	H	H
1P41*HOV129B	10	15438	281	SC	1.3	1.5	LIMITORQUE		H1BC/SHB0002	H	H
1P41*RV024A	1	502644	191	SC	1.5	1.3	—		—	H	—
1P41*RV024B	1	502644	191	SC	1.5	1.3	—		—	H	—
1P41*RV110A	.75	502644	191	SC	1.5	1.3	—		—	H	—
1P41*RV110B	.75	502644	191	SC	1.5	1.3	—		—	H	—
1P41*RV119	.75	502644	191	SC	1.5	1.3	—		—	H	—
1P41*RV130A	.75	502644	191	SC	1.5	1.3	—		—	H	—
1P41*RV130B	.75	502644	191	SC	1.5	1.3	—		—	H	—
1P42*HOV031A	8	SR-6186	88V-9	SC	1.2	.3	LIMITORQUE		SHB-000-5	H	H
1P42*HOV031B	8	SR-6186	88V-9	SC	1.3	.4	LIMITORQUE		SHB-000-5	H	H
1P42*HOV032A	8	SR-6186	88V-9	SC	1.1	1.5	LIMITORQUE		SHB-000-5	H	H
1P42*HOV032B	8	SR-6186	88V-9	SC	1.0	1.2	LIMITORQUE		SHB-000-5	H	H
1P42*HOV033A	6	SR-6199	88V-7	SC	.6	1.0	LIMITORQUE		SHB-000-5	H	H
1P42*HOV033B	6	SR-6199	88V-7	SC	.7	.9	LIMITORQUE		SHB-000-5	H	H
1P42*HOV034A	6	SR-6199	88V-7	SC	1.1	1.3	LIMITORQUE		SHB-000-5	H	H
1P42*HOV034B	6	SR-6199	88V-7	SC	1.3	1.0	LIMITORQUE		SHB-000-5	H	H

QUALIFICATION MILESTONES

NOTES

REVISION 17 DECEMBER 1983

A =REEVALUATION COMPLETE  
B =REQUEST FOR QUAL OR BID ISSUED  
C =S/W RECOMMENDATION TO LILCO  
D =QUAL DOC RECEIVED  
E =HARDWARE MODIFICATION REQ'D  
F =QUAL DOC APVD & FILED  
G =SORT PAPER COMPLETE  
H =COPIES OF DOC TO DISTRIBUTION

1. CL 2 AND 3 VALVES < OR = 2 IN. ARE FLOOR-MOUNTED (ENTP-9.5)
2. \* = DC MOTOR. ALL OTHERS ARE AC
3. CL 1 VALVES < OR = 1 IN. ARE FLOOR-MOUNTED (ENTP-9.5)
4. 2/1 = 2 IN. CLASS 1

SHOREHAM UNIT 1  
JOB NUMBER 1160002  
LILCO DOCKET 50-322

RBPH LIST  
1-SORT  
ACTIVE

STONE & WEBSTER ENGINEERING CORPORATION  
REACTOR BUILDING CATEGORY I PIPE MOUNTED EQUIPMENT  
BOP QUALIFICATION LEVEL (393 ITEMS)  
IS-316

RUN DATE 12/21/83  
RUN TIME 16.31.36  
PAGE 14

1 MARK NUMBER	PIPE SIZE	2 QUAL REPT	3 SPEC NO.	4 LCC.	5 OPER LOAD-G'S		OPERATOR		6 MODEL NO.	7 8 QUAL STATUS	
					HOR	VER	SUPPLIER			YOKE	OPER
1P42*HOV035	4	SR-6180	88V-4	SC	4.6	3.8	LIMITORQUE		SHB-000-5	H	H
1P42*HOV036	4	SR-6180	88V-4	SC	4.6	2.3	LIMITORQUE		SHB-000-5	H	H
1P42*HOV041A	14	SR-6265	88V-19	SC	3.3	2.3	LIMITORQUE		SHB-0-25	H	H
1P42*HOV041B	14	SR-6265	88V-19	SC	2.4	2.7	LIMITORQUE		SHB-0-25	H	H
1P42*HOV042A	14	SR-6265	88V-19	SC	2.0	2.2	LIMITORQUE		SHB-0-25	H	H
1P42*HOV042B	14	SR-6265	88V-19	SC	2.5	1.9	LIMITORQUE		SHB-0-25	H	H
1P42*HOV043A	8	SR-6186	88V-9	SC	.8	.4	LIMITORQUE		SHB-000-5	H	H
1P42*HOV043B	8	SR-6186	88V-9	SC	2.6	.5	LIMITORQUE		SHB-000-5	H	H
1P42*HOV044A	8	SR-6186	88V-9	SC	1.0	.5	LIMITORQUE		SHB-000-5	H	H
1P42*HOV044B	8	SR-6186	88V-9	SC	2.1	1.0	LIMITORQUE		SHB-000-5	H	H
1P42*HOV047	4	SR-6180	88V-4	SC	3.7	4.2	LIMITORQUE		SHB-000-5	H	H
1P42*HOV048	4	SR-6180	88V-4	SC	4.0	3.1	LIMITORQUE		SHB-000-5	H	H
1P42*HOV147	4	SR-6180	88V-4	PC	4.9	4.5	LIMITORQUE		SHB-000-5	H	H
1P42*HOV148	4	SR-6180	88V-4	PC	4.2	1.0	LIMITORQUE		SHB-000-5	H	H
1P42*HOV231	4	SR-6180	88V-4	SC	1.2	.9	LIMITORQUE		SHB-000-5	H	H
1P42*HOV232	3	SR-6183	88V-1	SC	5.2	9.9	LIMITORQUE		SHB-000-5	H	H
1P42*HOV233	3	SR-6183	88V-1	SC	5.9	7.4	LIMITORQUE		SHB-000-5	H	H
1P42*HOV234	3	SR-6183	88V-1	SC	5.6	8.9	LIMITORQUE		SHB-000-5	H	H
1P42*HOV235	3	SR-6183	88V-1	SC	5.9	7.7	LIMITORQUE		SHB-000-5	H	H

QUALIFICATION MILESTONES

NOTES

REVISION 17 DECEMBER 1983

A =REEVALUATION COMPLETE  
B =REQUEST FOR QUAL OR BID ISSUED  
C =S/W RECOMMENDATION TO LILCO  
D =QUAL DOC RECEIVED  
E =HARDWARE MODIFICATION REQ'D  
F =QUAL DOC APVD & FILED  
G =SQRT PAPER COMPLETE  
H =COPIES OF DOC TO DISTRIBUTION

1. CL 2 AND 3 VALVES < OR = 2 IN. ARE FLOOR-MOUNTED (EHTP-9.5)
2. \* = DC MOTOR. ALL OTHERS ARE AC
3. CL 1 VALVES < OR = 1 IN. ARE FLOOR-MOUNTED (EHTP-9.5)
4. 2/1 = 2 IN. CLASS 1

SHOREHAM UNIT 1  
JOB NUMBER 1160002  
LILCO DOCKET 50-322

RBPH LIST  
1-SORT  
ACTIVE

STONE & WEBSTER ENGINEERING CORPORATION  
REACTOR BUILDING CATEGORY I PIPE MOUNTED EQUIPMENT  
BOP QUALIFICATION LEVEL (393 ITEMS)  
IS-316

RUN DATE 12/21/83  
RUN TIME 16.31.36  
PAGE 15

1 MARK NUMBER	PIPE SIZE	2 QUAL REPT	3 SPEC NO.	4 LOC.	5 OPER LOAD-G'S		6 OPERATOR		7 8 QUAL STATUS	
					HOR	VER	SUPPLIER	MODEL NO.	YOKE	OPER
1P42#HOV236	4	SR-6180	88V-4	SC	6.8	3.3	LIMITORQUE	SHB-000-5	H	H
1P42#HOV237	3	SR-6183	88V-1	SC	4.3	2.2	LIMITORQUE	SHB-000-5	H	H
1P42#HOV238	3	SR-6183	88V-1	SC	5.8	2.0	LIMITORQUE	SHB-000-5	H	H
1P42#HOV239	3	SR-6183	88V-1	SC	8.7	4.9	LIMITORQUE	SHB-000-5	H	H
1P42#HOV240	3	SR-6183	88V-1	SC	1.6	1.6	LIMITORQUE	SHB-000-5	H	H
1P42#PCV071	6	10.3.115	318-5	SC	1.0	.6	COPEX	D-100-60	H	H
1P42#RV079A	1	502644	191	SC	1.5	1.3	—	—	H	—
1P42#RV079B	1	502644	191	SC	1.5	1.3	—	—	H	—
1P42#RV080A	1	502644	191	SC	1.5	1.3	—	—	H	—
1P42#RV080B	1	502644	191	SC	1.5	1.3	—	—	H	—
1P42#RV080C	1	502644	191	SC	1.5	1.3	—	—	H	—
1P42#RV080D	1	502644	191	SC	1.5	1.3	—	—	H	—
1P42#RV091A	1	502644	191	PC	6.9	3.0	—	—	H	—
1P42#RV091B	1	502644	191	PC	6.9	3.0	—	—	H	—
1P42#RV291A	.75	502644	191	PC	6.9	3.0	—	—	H	—
1P42#RV291B	.75	502644	191	PC	6.9	3.0	—	—	H	—
1P42#TCV001H	12	CD76-82	423-2	SC	1.1	1.1	FISHER	656-60	H	H
1P42#TCV001X	10	CD76-82	423-3	SC	.9	2.3	FISHER	656-60	H	H
1P42#TCV001Y	12	CD76-82	423-2	SC	1.9	.4	FISHER	656-60	H	H

QUALIFICATION MILESTONES

NOTES

REVISION 17 DECEMBER 1983

A =REEVALUATION COMPLETE  
B =REQUEST FOR QUAL OR BID ISSUED  
C =S/H RECOMMENDATION TO LILCO  
D =QUAL DOC RECEIVED  
E =HARDWARE MODIFICATION REQ'D  
F =QUAL DOC APVD & FILED  
G =SQRT PAPER COMPLETE  
H =COPIES OF DOC TO DISTRIBUTION

- CL 2 AND 3 VALVES < OR = 2 IN. ARE FLOOR-MOUNTED (EHTP-9.5)
- \* = DC MOTOR. ALL OTHERS ARE AC
- CL 1 VALVES < OR = 1 IN. ARE FLOOR-MOUNTED (EHTP-9.5)
- 2/1 = 2 IN. CLASS 1

SHOREHAM UNIT 1  
JCB NUMBER 1160002  
LILCO DOCKET 50-322

RPM LIST  
1-SORT  
ACTIVE

STONE & WEBSTER ENGINEERING CORPORATION  
REACTOR BUILDING CATEGORY I PIPE MOUNTED EQUIPMENT  
BOP QUALIFICATION LEVEL (393 ITEMS)  
IS-316

RUN DATE 12/21/83  
RUN TIME 16.31.36  
PAGE 16

1 MARK NUMBER	2 PIPE SIZE	3 QUAL REPT	4 SPEC NO.	5 LOC.	5 OPER LOAD-G'S		6 OPERATOR		7 8 QUAL STATUS	
					HOR	VER	SUPPLIER	MODEL NO.	YOKE	OPER
1P42*TCV001Z	10	CD76-82	423-3	SC	2.0	2.1	FISHER	656-60	H	H
1P50*HOV103A	1.5/2	SR-6189	214-1	SC	2.3	.7	LIMITORQUE	SHB-000-5	H	H
1P50*HOV103B	1.5/2	SR-6189	214-1	SC	2.3	.7	LIMITORQUE	SHB-000-5	H	H
1P50*HOV104	1	SR-6190	214-3	SC	2.3	.7	LIMITORQUE	SHB-000-2	H	H
1P50*HOV105A	1.5/2	SR-6189	214-1	PC	2.3	.7	LIMITORQUE	SHB-000-5	H	H
1P50*HOV105B	1.5/2	SR-6189	214-1	PC	2.3	.7	LIMITORQUE	SHB-000-5	H	H
1P50*HOV106	1	SR-6190	214-3	SC	2.3	.7	LIMITORQUE	SHB-000-2	H	H
1P50*HOV113A	1	SR-6189	214-1	SC	2.3	.7	LIMITORQUE	SHB-000-5	H	H
1P50*HOV113B	1	SR-6189	214-1	SC	2.3	.7	LIMITORQUE	SHB-000-5	H	H
1P50*HOV114A	1	SR-6189	214-1	SC	2.3	.7	LIMITORQUE	SHB-000-5	H	H
1P50*HOV114B	1	SR-6189	214-1	SC	2.3	.7	LIMITORQUE	SHB-000-5	H	H
1T23*HOV031A	.5	SR-6341	214-2	SC	2.3	.7	LIMITORQUE	SHB-000-2	H	H
1T23*HOV031B	.5	SR-6341	214-2	SC	2.3	.7	LIMITORQUE	SHB-000-2	H	H
1T23*RV021A	.75	502644	191	SC	1.5	1.3	—	—	H	—
1T23*RV021B	.75	502644	191	SC	1.5	1.3	—	—	H	—
1T24*AOV001A	4	10.3.151	318-7	SC	6.8	3.6	COPEX	D-100-100	H	H
1T24*AOV001B	4	10.3.151	318-7	SC	2.9	3.7	COPEX	D-100-100	H	H
1T24*AOV004A	4	10.3.151	318-7	SC	1.8	1.1	COPEX	D-100-100	H	H
1T24*AOV004B	4	10.3.151	318-7	SC	3.0	2.0	COPEX	D-100-100	H	H

QUALIFICATION MILESTONES

NOTES

REVISION 17 DECEMBER 1983

A = REEVALUATION COMPLETE  
B = REQUEST FOR QUAL OR BID ISSUED  
C = S/W RECOMMENDATION TO LILCO  
D = QUAL DOC RECEIVED  
E = HARDWARE MODIFICATION REQ'D  
F = QUAL DOC APVD & FILED  
G = SORT PAPER COMPLETE  
H = COPIES OF DOC TO DISTRIBUTION

- CL 2 AND 3 VALVES < OR = 2 IN. ARE FLOOR-MOUNTED (EHDP-9.5)
- \* = DC MOTOR. ALL OTHERS ARE AC
- CL 1 VALVES < OR = 1 IN. ARE FLOOR-MOUNTED (EHDP-9.5)
- 2/1 = 2 IN. CLASS 1

SHOREHAM UNIT 1  
JOB NUMBER 1160002  
LILCO DOCKET 50-322

RBPH LIST  
1-SORT  
ACTIVE

STONE & WEBSTER ENGINEERING CORPORATION  
REACTOR BUILDING CATEGORY I PIPE MOUNTED EQUIPMENT  
BOP QUALIFICATION LEVEL (323 ITEMS)  
IS-316

RUN DATE 12/21/83  
RUN TIME 16.31.36  
PAGE 17

1 MARK NUMBER	PIPE SIZE	2 QUAL REPT	3 SPEC NO.	4 LOC.	5 OPER LOAD-G'S		6 OPERATOR		7 8 QUAL STATUS	
					HOR	VER	SUPPLIER	MODEL NO.	YOKE	OPER
1T46wAOV035A	72	R-1062-41	111-3	SC	2.7	.6	BETTIS	T-316 SR2-M3	H	H
1T46wAOV035B	72	R-1062-41	111-3	SC	5.2	.6	BETTIS	T-316 SR2-M3	H	H
1T46wAOV037A	72	CD75-35	111-3	SC	1.0	.7	BETTIS	T-316 SR2-M3	H	H
1T46wAOV037B	72	CD75-35	111-3	SC	.8	.4	BETTIS	T-316 SR2-M3	H	H
1T46wAOV038A	18	4G403	172	PC	1.9	1.5	BETTIS	722C-SR-M3	H	H
1T46wAOV038B	18	4G403	172	SC	1.3	1.3	BETTIS	722C-SR-M3	H	H
1T46wAOV038C	18	4G403	172	SC	1.9	1.5	BETTIS	722C-SR-M3	H	H
1T46wAOV038D	18	4G403	172	SC	1.3	1.3	BETTIS	722C-SR-M3	H	H
1T46wAOV039A	18	4G403	172	PC	1.9	1.5	BETTIS	722C-SR-M3	H	H
1T46wAOV039B	18	4G403	172	SC	1.3	1.3	BETTIS	722C-SR-M3	H	H
1T46wAOV039C	18	4G403	172	SC	4.0	1.6	BETTIS	722C-SR-M3	H	H
1T46wAOV039D	18	4G403	172	SC	2.7	1.4	BETTIS	722C-SR-M3	H	H
1T46wAOV078A	6	10.3.145	318-3	PC	2.5	1.5	COPEs	D-100-100	H	H
1T46wAOV078B	6	10.3.145	318-3	SC	1.3	.4	COPEs	D-100-100	H	H
1T46wAOV079A	6	10.3.151	318-4	SC	2.9	1.3	COPEs	D-100-100	H	H
1T46wAOV079B	6	10.3.151	318-4	SC	3.8	1.5	COPEs	D-100-100	H	H
1T46wTCV-022A	4	2-24451	310-2	SC	.5	.3	BECK	14-101-ES	H	H
1T46wTCV-022B	4	2-24451	310-2	SC	.9	1.0	BECK	14-101-ES	H	H
1T46wTCV-023A	4	2-24451	310-2	SC	1.2	.2	BECK	14-101-ES	H	H

QUALIFICATION MILESTONES

NOTES

REVISION 17 DECEMBER 1983

A =REEVALUATION COMPLETE  
B =REQUEST FOR QUAL OR BID ISSUED  
C =S/N RECOMMENDATION TO LILCO  
D =QUAL DOC RECEIVED  
E =HARDWARE MODIFICATION REQ'D  
F =QUAL DOC APVD & FILED  
G =SORT PAPER COMPLETE  
H =COPIES OF DOC TO DISTRIBUTION

1. CL 2 AND 3 VALVES < OR = 2 IN. ARE FLOOR-MOUNTED (EHTP-9.5)
2. \* = DC MOTOR. ALL OTHERS ARE AC
3. CL 1 VALVES < OR = 1 IN. ARE FLOOR-MOUNTED (EHTP-9.5)
4. 2/1 = 2 IN. CLASS 1

SHOREHAM 1  
JOB NUMBER 1160002  
LILCO DOCKET 50-322

RBPB LIST  
1-SORT  
ACTIVE

STONE & WEBSTER ENGINEERING CORPORATION  
REACTOR BUILDING CATEGORY I PIPE MOUNTED EQUIPMENT  
BOP QUALIFICATION LEVEL (393 ITEMS)  
IS-316

RUN DATE 12/21/83  
RUN TIME 16.31.36  
PAGE 18

1 MARK NUMBER	PIPE SIZE	2 QUAL REPT	3 SPEC NO.	4 LOC.	5 OPER LOAD-G'S		OPERATOR	6 MODEL NO.	8 STATUS	
					HOR	VER			ROKE	OPER
1T46*TCV-023B	4	2-24451	310-2	SC	1.3	.8	BECK	14-101-ES	H	H
1T46*TCV-024A	4	2-24451	310-2	SC	.9	.6	BECK	14-101-ES	H	H
1T46*TCV-024B	4	2-24451	310-2	SC	1.0	.6	BECK	14-101-ES	H	H
1T46*TCV-025A	4	2-24451	310-2	SC	1.2	.7	BECK	14-101-ES	H	H
1T46*TCV-025B	4	2-24451	310-2	SC	.4	.5	BECK	14-101-ES	H	H
1T46*TCV-026A	4	2-24451	310-2	SC	1.1	.6	BECK	14-101-ES	H	H
1T46*TCV-026B	4	2-24451	310-2	SC	1.0	.6	BECK	14-101-ES	H	H
1T46*TCV-028A	2/3	2-24451	310-2	SC	2.3	.7	BECK	14-101-ES	H	H
1T46*TCV-028B	2/3	2-24451	310-2	SC	2.3	.7	BECK	14-101-ES	H	H
1T46*TCV059A	2/3	2-24451A	310-1	SC	1.0	.1	BECK	14-101-ES	H	H
1T46*TCV059B	2/3	2-24451A	310-1	SC	2.3	.7	BECK	14-101-ES	H	H
1T46*TCV060A	2/3	2-24451A	310-1	SC	.7	.7	BECK	14-101-ES	H	H
1T46*TCV060B	2/3	2-24451A	310-1	SC	2.3	.7	BECK	14-101-ES	H	H
1T47*RV037	.75	502644	191	PC	6.9	3.0	---	---	H	-
1T47*RV038	.75	502644	191	PC	6.9	3.0	---	---	H	-
1T48*MOV004	1	SR-6190	253-3	SC	2.3	.7	LIMITORQUE	SHB-000-2	H	H
1T48*MOV031A	6	SR-6177	88V-6	PC	2.9	1.3	LIMITORQUE	SHB-00-5	H	H
1T48*MOV031B	6	SR-6177	88V-6	PC	6.1	1.8	LIMITORQUE	SHB-00-5	H	H
1T48*MOV032A	6	SR-6177	88V-6	PC	6.5	1.8	LIMITORQUE	SHB-00-7 1/2	H	H

#### QUALIFICATION MILESTONES

#### NOTES

REVISION 17 DECEMBER 1983

A = REEVALUATION COMPLETE  
B = REQUEST FOR QUAL OR BID ISSUED  
C = S/W RECOMMENDATION TO LILCO  
D = QUAL DOC RECEIVED  
E = HARDWARE MODIFICATION REQ'D  
F = QUAL DOC APVD & FILED  
G = SORT PAPER COMPLETE  
H = COPIES OF DOC TO DISTRIBUTION

- CL 2 AND 3 VALVES < OR = 2 IN. ARE FLOOR-MOUNTED (ENTP-9.5)
- \* = DC MOTOR. ALL OTHERS ARE AC
- CL 1 VALVES < OR = 1 IN. ARE FLOOR-MOUNTED (ENTP-9.5)
- 2/1 = 2 IN. CLASS 1

SHOREHAM UNIT 1  
JOB NUMBER 1160002  
LILCO DOCKET 50-322

RBPB LIST  
1-SORT  
ACTIVE

STONE & WEBSTER ENGINEERING CORPORATION  
REACTOR BUILDING CATEGORY I PIPE MOUNTED EQUIPMENT  
BOP QUALIFICATION LEVEL (393 ITEMS)  
TS-316

RUN DATE 12/21/83  
RUN TIME 16.31.36  
PAGE 19

1 MARK NUMBER	PIPE SIZE	2 QUAL REPT	3 SPEC NO.	4 LOC.	5 OPER LOAD-G'S		OPERATOR	6 MODEL NO.	7 8 QUAL STATUS	
					HOR	VER			YOKE	OPER
1T48#HOV032B	6	SR-6177	88V-6	PC	5.3	3.2	LIMITORQUE	SHB-00-7 1/2	H	H
1T48#HOV033A	6	SR-6177	88V-6	SC	4.2	1.5	LIMITORQUE	SHB-00-5	H	H
1T48#HOV033B	6	SR-6177	88V-6	SC	4.9	1.3	LIMITORQUE	SHB-00-5	H	H
1T48#HOV034A	6	SR-6177	88V-6	SC	5.8	1.5	LIMITORQUE	SHB-00-7 1/2	H	H
1T48#HOV034B	6	SR-6177	88V-6	SC	3.7	1.3	LIMITORQUE	SHB-00-7 1/2	H	H
1T48#HOV035A	4	SR-6180	88V-4	SC	4.2	2.8	LIMITORQUE	SHB-000-5	H	H
1T48#HOV035B	4	SR-6180	88V-4	SC	6.4	5.7	LIMITORQUE	SHB-000-5	H	H
1T48#HOV037A	6	SR-6177	88V-6	SC	5.7	4.1	LIMITORQUE	SHB-00-7 1/2	H	H
1T48#HOV037B	6	SR-6177	88V-6	SC	4.4	3.0	LIMITORQUE	SHB-00-7 1/2	H	H
1T48#HOV038A	4	SR-6180	88V-4	SC	4.1	2.0	LIMITORQUE	SHB-000-5	H	H
1T48#HOV038B	4	SR-6180	88V-4	SC	5.0	1.9	LIMITORQUE	SHB-000-5	H	H
1T48#HOV040A	6	SR-6177	88V-6	SC	3.9	1.3	LIMITORQUE	SHB-00-7 1/2	H	H
1T48#HOV040B	6	SR-6177	88V-6	SC	4.0	1.5	LIMITORQUE	SHB-00-7 1/2	H	H
1T48#HOV041	4	SR-6180	88V-4	SC	1.3	.7	LIMITORQUE	SHB-000-5	H	H
1T48#HOV042	4	SR-6180	88V-4	SC	1.0	1.3	LIMITORQUE	SHB-000-5	H	H
1T48#HOV043A	4	SR-6180	88V-4	SC	2.9	2.5	LIMITORQUE	SHB-000-5	H	H
1T48#HOV043B	4	SR-6180	88V-4	SC	5.9	2.0	LIMITORQUE	SHB-000-5	H	H
1T48#HOV044A	4	SR-6180	88V-4	SC	6.0	1.9	LIMITORQUE	SHB-000-5	H	H
1T48#HOV044B	4	SR-6180	88V-4	SC	4.9	1.8	LIMITORQUE	SHB-000-5	H	H

QUALIFICATION MILESTONES

NOTES

REVISION 17 DECEMBER 1983

A =REEVALUATION COMPLETE  
B =REQUEST FOR QUAL OR BID ISSUED  
C =S/W RECOMMENDATION TO LILCO  
D =QUAL DOC RECEIVED  
E =HARDWARE MODIFICATION REQ'D  
F =QUAL DOC APVD & FILED  
G =SORT PAPER COMPLETE  
H =COPIES OF DOC TO DISTRIBUTION

1. CL 2 AND 3 VALVES < OR = 2 IN. ARE FLOOR-MOUNTED (EHDP-9.5)
2. \* = DC MOTOR. ALL OTHERS ARE AC
3. CL 1 VALVES < OR = 1 IN. ARE FLOOR-MOUNTED (EHDP-9.5)
4. 2/1 = 2 IN. CLASS 1

SHOREHAM UNIT 1  
JOB NUMBER 1160002  
LILCO DOCKET 50-322

RPPH LIST  
1-SORT  
ACTIVE

STONE & WEBSTER ENGINEERING CORPORATION  
REACTOR BUILDING CATEGORY I PIPE MOUNTED EQUIPMENT  
BOP QUALIFICATION LEVEL (393 ITEMS)  
IS-316

RUN DATE 12/21/83  
RUN TIME 16.31.36  
PAGE 20

1 MARK NUMBER	PIPE SIZE	2 QUAL REPT	3 SPEC NO.	4 LOC.	5 OPER LOAD-G'S		6 OPERATOR		7 8 QUAL STATUS	
					HOR	VER	SUPPLIER	MODEL NO.	YOKE	OPER
1T48*PCV143A	.25	QTR-745	492	SC	1.5	1.3	—	—	H	—
1T48*PCV143B	.25	QTR-745	492	SC	1.5	1.3	—	—	H	—
1T48*PCV143C	.25	QTR-745	492	SC	1.5	1.3	—	—	H	—
1T48*PCV143D	.25	QTR-745	492	SC	1.5	1.3	—	—	H	—
1T48*PCV144A	.25	QTR-745	492	SC	1.5	1.3	—	—	H	—
1T48*PCV144B	.25	QTR-745	492	SC	1.5	1.3	—	—	H	—
1T48*PCV145A	.25	QTR-745	492	SC	1.5	1.3	—	—	H	—
1T48*PCV145B	.25	QTR-745	492	SC	1.5	1.3	—	—	H	—
1T48*PCV145C	.25	QTR-745	492	SC	1.5	1.3	—	—	H	—
1T48*PCV145D	.25	QTR-745	492	SC	1.5	1.3	—	—	H	—
1T48*PCV146A	.25	QTR-745	492	SC	1.5	1.3	—	—	H	—
1T48*PCV146B	.25	QTR-745	492	SC	1.5	1.3	—	—	H	—
1T48*RV017A	3	502644	191	SC	1.9	.7	—	—	H	—
1T48*RV017B	3	502644	191	SC	3.7	3.1	—	—	H	—
1T48*SOV126A	.75	MR5265603271	310979	SC	1.5	1.3	—	—	H	—
1T48*SOV126B	.75	MR5265603271	310979	SC	1.5	1.3	—	—	H	—
1T48*SOV127A	.75	MR5265603271	310979	SC	1.5	1.3	—	—	H	—
1T48*SOV127B	.75	MR5265603271	310979	SC	1.5	1.3	—	—	H	—
1T48*SOV128A	.75	MR5265603271	310979	SC	1.5	1.3	—	—	H	—

QUALIFICATION MILESTONES

NOTES

REVISION 17 DECEMBER 1983

A =REEVALUATION COMPLETE  
B =REQUEST FOR QUAL OR BID ISSUED  
C =S/W RECOMMENDATION TO LILCO  
D =QUAL DOC RECEIVED  
E =HARDWARE MODIFICATION REQ'D  
F =QUAL DOC APVD & FILED  
G =SORT PAPER COMPLETE  
H =COPIES OF DOC TO DISTRIBUTION

- CL 2 AND 3 VALVES < OR = 2 IN. ARE FLOOR-MOUNTED (ENTP-9.5)
- \* = DC MOTOR. ALL OTHERS ARE AC
- CL 1 VALVES < OR = 1 IN. ARE FLOOR-MOUNTED (ENTP-9.5)
- 2/1 = 2 IN. CLASS 1

SHOREHAM UNIT 1  
JOB NUMBER 1160002  
LILCO DOCKET 50-322

RBPH LIST  
1-SORT  
ACTIVE

STONE & WEBSTER ENGINEERING CORPORATION  
REACTOR BUILDING CATEGORY I PIPE MOUNTED EQUIPMENT  
BOP QUALIFICATION LEVEL (393 ITEMS)  
IS-316

RUN DATE 12/21/83  
RUN TIME 16.31.36  
PAGE 21

1 MARK NUMBER	PIPE SIZE	2 QUAL REPT	3 SPEC NO.	4 LOC.	5 OPER LOAD-G'S		6 OPERATOR		7 8 QUAL STATUS	
					HOR	VER	SUPPLIER	MODEL NO.	YOKE	OPER
1T48*SOV128B	.75	HR5265683271	310979	SC	1.5	1.3	—	—	H	—
1T48*SOV129A	.75	HR5265683271	310979	SC	1.5	1.3	—	—	H	—
1T48*SOV129B	.75	HR5265683271	310979	SC	1.5	1.3	—	—	H	—
1T48*SOV130	.75	HR5265683271	310979	SC	1.5	1.3	—	—	H	—
1T48*SOV131	.75	HR5265683271	310979	SC	1.5	1.3	—	—	H	—
1T48*SOV136A	.75	HR5265683271	310979	SC	1.5	1.3	—	—	H	—
1T48*SOV136B	.75	HR5265683271	310979	SC	1.5	1.3	—	—	H	—
1T48*SOV137A	.75	HR5265683271	310979	SC	1.5	1.3	—	—	H	—
1T48*SOV137B	.75	HR5265683271	310979	SC	1.5	1.3	—	—	H	—
1Z93*FCV011A	.25	17759-83N	493	SC	1.5	1.3	—	—	H	—
1Z93*FCV011B	.25	17759-83N	493	SC	1.5	1.3	—	—	H	—
1Z93*PCV010A	.25	QTR-745	492	SC	1.5	1.3	—	—	H	—
1Z93*PCV010B	.25	QTR-745	492	SC	1.5	1.3	—	—	H	—

QUALIFICATION HISTORY

NOTES

REVISION 17 DECEMBER 1983

A = REEVALUATION COMPLETE  
B = REQUEST FOR QUAL OR BID ISSUED  
C = S/W RECOMMENDATION TO LILCO  
D = QUAL DOC RECEIVED  
E = HARDWARE MODIFICATION REQ'D  
F = QUAL DOC APVD & FILED  
G = SORT PAPER COMPLETE  
H = COPIES OF DOC TO DISTRIBUTION

1. CL 2 AND 3 VALVES < OR = 2 IN. ARE FLOOR-MOUNTED (EHMP-9.5)
2. \* = DC MOTOR. ALL OTHERS ARE AC
3. CL 1 VALVES < OR = 1 IN. ARE FLOOR-MOUNTED (EHMP-9.5)
4. 2/1 = 2 IN. CLASS 1

SHOREHAM 1  
JOB NUMBER 1160002  
LILCO DOCKET 50-022

NSSS LIST  
1-SORT  
ACTIVE

STONE & WEBSTER ENGINEERING CORPORATION  
NSSS CATEGORY I EQUIPMENT  
NSSS QUALIFICATION LEVEL(150 ITEMS)  
IS-316

RUN DATE 12/21/83  
RUN TIME 16.31.41  
PAGE 1

MARK NUMBER	EQUIPMENT DESCRIPTION	NSSS NO.	VENDOR	BLOG ELEV	AVAIL INSP	QUAL REPT	QUAL METH	FREQ	TYPE HTNG	SAFETY FUNC	QUAL STATUS
1B21*AOV001	ISOLATION VALVE-HS	B21F022	ROCKWELL	SC082	YES	NEDE-24122-2	SA	8	P4	CS,HS	G
1B21*AOV002	ISOLATION VALVE-HS	B21F028	ROCKWELL	SC082	YES	NEDE-24122-2	SA	8	P4	CS,HS	G
1B21*D-003	CONDENSING CHAMBER	B21D002	GE	SC080	YES	DRF-A00794-11	SA	60+	P	HS,CS	G
1B21*D-004	CONDENSING CHAMBERS	B21D004	GE	SC080	YES	DRF-A00794-11	SA	60+	P2	HS,CS	G
1B21*D-005	CONDENSING CHAMBERS	B21D006	GE	SC080	YES	DRF-A00794-11	SA	60+	P16	HS,CS	G
1B21*PDS02A1	DAMPENER	B21N006A				SHIP LOOSE			F		G
1B21*PDS02B1	DAMPENER	B21N007A				SHIP LOOSE			F		G
1B21*PDS02C1	DAMPENER	B21N008A				SHIP LOOSE			F		G
1B21*PDS02D1	DAMPENER	B21N009A				SHIP LOOSE			F		G
1B21*PS 020	PRESSURE SWITCH	B21N015	BARKSDALE	CB037	YES	DRF-A001084215E	SAT	33+	F4	CS,HS	G
1B21*RV 092	RELIEF VALVE	B21F013	TARG ROCK	PC099	YES	VPF-5485-3-1	HBT	60+	P11	CS	G
1B21*TE 003	TEMPERATURE ELEMENT	B21N040	ROSEMOUNT	T084	YES	DRF-A00-01364	SA	100	P	CS,HS	G
1B21*TE 043X	TEMPERATURE ELEMENT	B21N016	PYCO	T059	YES	DRF-A00-108491C	SAT	60+	F4	CS,HS	G
1B21*TE 043Y	TEMPERATURE ELEMENT	B21N010	PYCO	T082	YES	DRF-A00-108491C	SAT	60+	F4	CS,HS	G
1B21*TE 059	TEMPERATURE ELEMENT	B21N014	PYCO	T059	YES	DRF-A00-108491C	SAT	60+	F4	CS,HS	G
1B31*MOV031	RECIRC SUCTION VALVE	B31F023	ANCHOR	SC017	YES	385HA661	SA	41	P2	N	G
1B31*MOV032	RECIRC DISCHARGE VALVE	B31F031	ANCHOR	SC014	YES	VPF2809-40	SA/DA	100	P2	N	G
1B31*P- 001	RECIRC PUMP & MOTOR	B31C001	BJ/GE	PC070	YES	206B33C001-KS-1	SA	60+	P2	N	G
1B31*TE 025	TEMPERATURE ELEMENT	B31N023	ROSEMOUNT	PC065	YES	DRF-A00-01364	SA	100	P2	N	G

CB =CONTROL BLDG  
CS =COLD SHUT DOWN  
DA =DYNAMIC ANALYSIS  
F =FLOOR MOUNTED  
HS =HOT STANDBY  
HBT=MULTI-FREQUENCY  
BIAXIAL TESTING  
HST=MULTI-FREQUENCY  
SINGLE AXIAL TESTING

P =PIPE MOUNTED  
PC =PRIMARY CONT.  
PL =PEDESTAL  
QP =QUALIFIED BY  
PIPING ANALYSIS  
RW =RADWASTE  
SA =STATIC ANALYSIS  
SAT=SINGLE FREQUENCY  
SINGLE AXIAL TESTING

SBT=SINGLE FREQUENCY  
BIAXIAL TESTING  
SC =SECONDARY CONT.  
/ =LOCATED ON CONT.  
WALL  
T =MAIN STH. TUNNEL  
N =NEITHER CS OR HS  
Z =PASSIVE ITEM  
(SQRT PAPER NOT  
REQ'D)

QUALIFICATION MILESTONES  
A =REEVALUATION COMPLETE  
B =REQUEST FOR REQUAL OR BID ISSUED  
C =S/W RECOMMENDATION TO LILCO  
D =QUAL DOC RECEIVED  
E =HARDWARE MODIFICATION REQ'D  
F =QUAL DOC APVD & FILED  
G =SQRT PAPER COMPLETE  
H =COPIES OF DOC TO DISTRIBUTION

REVISION 17 DECEMBER 1983

NOTE: NUMBER IN  
'TYPE HTNG' COLUMN IS  
QUANTITY OF ITEMS.

SHOREHAM UNIT 1  
JOB NUMBER 1160002  
LILCO DOCKET 50-322

NSSS LIST  
1-SORT  
ACTIVE

STONE & WEBSTER ENGINEERING CORPORATION  
NSSS CATEGORY I EQUIPMENT  
NSSS QUALIFICATION LEVEL(150 ITEMS)  
IS-316

RUN DATE 12/21/83  
RUN TIME 16.31.41  
PAGE 2

MARK NUMBER	EQUIPMENT DESCRIPTION	NSSS NO.	VENDOR	BLDG ELEV	AVAIL INSP	QUAL REPT	QUAL METH	FREQ	TYPE MTNG	SAFETY FUNC	QUAL STATUS
1C11*AOV050	SDV AOV	C11-F180				SHIP LOOSE			P		F
1C11*AOV051	SDV AOV	C11-F181				SHIP LOOSE			P		F
1C11*AOV081	HCU DIAPHRAGH VALVE	C11F010	WM	SC078	YES		SA		P	CS,HS	F
1C11*AOV082	HCU DIAPHRAGH VALVE	C11F011	WM	SC040	YES		SA		P	CS,HS	F
1C11*HCU-01	CRD HYDRA CONT UNIT	C11D001	GE	SC078	YES	383HA853	HST	2	137	CS,HS	G
1C11*LS 049	LEVEL SWITCH	C11N013	MAGNETROL	SC078	YES	43235-1	HBT	30+	F2	CS,HS	G
1C11*LS 095	LEVEL SWITCH	C11N013	MAGNETROL	SC078	YES	43235-1	HBT	30+	F6	CS,HS	G
1C11*LT 049	LEVEL XHTR	C11N012	GOULD	SC078	YES	SHIP LOOSE		11	F4		G
1C11*PT 113	PRESS XHTR	C11N052	ROSEMOUNT	SC063	YES	SHIP LOOSE		50	F		G
1C11*SOV044	HCU SOLENOID VALVE	C11F009	ASCO	SC063					P	CS,HS	D
1C11*SOV052	SDV SOLENOID VALVE	C11F182	ASCO						P		D
1C41*EV 010	EXPLOSIVE VALVE	C41F004	CONAX	SC112	YES	VPF3394-36-2	SBT	35+	P2	N	G
1C41*P-024	STDBY LIQ PUMP&HTR	C41C001	UNION PUM	SC113	YES	VPF-5517-2-2	SBT	60+	F2	N	G
1C41*PI 002	PRESSURE INDICATOR	C41R003	ROBT SHAW	SC112	YES	DRF-A0001841600	SBT	100	F	CS,HS	G
1C41*PT 002	PRESSURE TRANSMITTER	C41N004	ROSEMOUNT	SC112	YES	DRF-A00-1084101	SAT	50	F	CS,HS	G
1C41*TK-003	SLC STORAGE TANK	C41A001	LANCO	SC113	YES	RA542/C41-22	SA	59	F	N	G
1C41*TK-150	SLC ACCUMULATORS	C41A003	HYDRA CON	SC097	YES	DRF C41-22	SA	N/A	P2	N	G
1C41*TS001A	TEMP SWITCH	C41N003	WEED INST	SC112		DRF-A00-01364	SA	60+	F	CS,HS	G
1C51*TIP-004	TIP VALVE GUIDE T	C51J004	GE	SC073	YES	DRF-A00992-M	SAT	100	F4	N	G

CB =CONTROL BLDG  
CS =COLD SHUT DOWN  
DA =DYNAMIC ANALYSIS  
F =FLOOR MOUNTED  
HS =HOT STANDBY  
HBT=MULTI-FREQUENCY  
BIAXIAL TESTING  
HST=MULTI-FREQUENCY  
SINGLE AXIAL TESTING

P =PIPE MOUNTED  
PC =PRIMARY CONT.  
PL =PEDESTAL  
QP =QUALIFIED BY  
PIPING ANALYSIS  
RW =RADWASTE  
SA =STATIC ANALYSIS  
SAT=SINGLE FREQUENCY  
SINGLE AXIAL TESTING

SBT=SINGLE FREQUENCY  
BIAXIAL TESTING  
SC =SECONDARY CONT.  
/ =LOCATED ON CONT.  
WALL  
T =MAIN STM. TUNNEL  
N =NEITHER CS OR HS  
Z =PASSIVE ITEM  
(SQRT PAPER NOT  
REQ'D)

QUALIFICATION MILESTONES  
A =REEVALUATION COMPLETE  
B =REQUEST FOR REQUAL OR BID ISSUED  
C =S/W RECOMMENDATION TO LILCO  
D =QUAL DOC RECEIVED  
E =HARDWARE MODIFICATION REQ'D  
F =QUAL DOC APVD & FILED  
G =SQRT PAPER COMPLETE  
H =COPIES OF DOC TO DISTRIBUTION  
REQ'D

REVISION 17 DECEMBER 1983

NOTE: NUMBER IN  
'TYPE MTNG' COLUMN IS  
QUANTITY OF ITEMS.

SHOREHAM UNIT 1  
JOB NUMBER 1160002  
LILCO DOCKET 50-322

NSSS LIST  
1-SORT  
ACTIVE

STONE & WEBSTER ENGINEERING CORPORATION  
NSSS CATEGORY I EQUIPMENT  
NSSS QUALIFICATION LEVEL (150 ITEMS)  
IS-316

RUN DATE 12/21/83  
RUN TIME 16.31.41  
PAGE 3

MARK NUMBER	EQUIPMENT DESCRIPTION	NSSS NO.	VENDOR	BLDG ELEV	AVAIL INSP	QUAL REPT	QUAL METH	FREQ	TYPE MTNG	SAFETY FUNC	QUAL STATUS
1C61WFT 001	DIFF PRESS XHTR	C61N001	ROSEMOUNT	SC008	YES	DRF-A00-1084101	SAT	50	F	N	G
1C61WPNL-RSP	REMOTE SHT DN PNL	C61P001	GE	SC063	YES	SAI-029QA80PA-B	HBT	14	F	N	G
1C61WPT 006	PRESS TRANS	C61N006	BAILEY	SC079	YES	DRF-A001084162C	SAT	100	F	N	G
1C71WPS 003	PRESSURE SWITCH	C71N003	BARKSDALE	CB037	YES	DRF-A001084215E	SAT	33+	F4	CS,HS	G
1E11WE-034	RHR HEAT EXCHANGERS	E11B001	PERFEX CP	SC008	YES	DRF E11-1	DA	14	F2	HS,CS	G
1E11WFT 004	DIFF PRESS XHTR	E11N013	ROSEMOUNT	SC078	YES	DRFA00-1084-101	SAT	50	F	CS,HS	G
1E11WFT 006	DIFF PRESS TRANS	E11N007	ROSEMOUNT	SC008	YES	DRFA00-1084-101	SAT	50	F2	CS,HS	G
1E11WLT 002	LEVEL XHTR	E11N009	BARTON	SC024	YES	DRFA00-1084-67E	HBT	100	F2	CS,HS	G
1E11WP-014	RHR PUMPS & MOTORS	E11C002	BJ/GE	SC008	YES	DRF E11-11	DA	10	F4	CS,HS	G
1E11WPS 134	PRESSURE SWITCH	E11N016	BARKSDALE	SC008	YES	DRFA00-1084215E	SAT	33+	F4	CS,HS	G
1E11WPS 135	PRESSURE SWITCH	E11N020	BARKSDALE	SC008	YES	DRFA00-1084215E	SAT	33+	F4	CS,HS	G
1E11WTE 014	TEMP ELEMENT	E11N009	PYCO	SC023	YES	DRFA00-108491C	SAT	60+	F2	CS,HS	G
1E11WTE 015	TEMP ELEMENT	E11N030	PYCO	SC023	YES	DRFA00-108491C	SAT	60+	F2	CS,HS	G
1E21WP-013	CS PUMPS & MOTORS	E21C001	BJ/GE	SC008	YES	DRF E21-53	DA	12	F2	CS	G
1E21WPIS098	PRESS INDIC SWITCH	E21N010	ROBT SHAW	SC008	YES	DRFA00-1084215E	SAT	33+	F2	CS,HS	G
1E21WPS 012	PRESSURE SWITCH	E21N008	BARKSDALE	SC008	YES	DRFA00-184-141	SAT	33+	F2	CS,HS	G
1E21WPS013	PRESSURE SWITCH	E21N009	BARKSDALE	SC008	YES	DRFA00-184-141	SAT	33+	F2	CS,HS	G
1E32WBLO-13	OUTBD HSIV LCS BLOWER	E32C002	GE	SC076	YES	VPF3830-14-1	SBT	60+	F2	N	G
1E32WBLO-14	INBD HSIV LCS BLOWER	E32C001	GE	SC076	YES	VPF3830-14-1	SBT	60+	F	N	G

CB =CONTROL BLDG  
CS =COLD SHUT DOWN  
DA =DYNAMIC ANALYSIS  
F =FLOOR MOUNTED  
HS =HOT STANDBY  
HBT=MULTI-FREQUENCY  
BIAXIAL TESTING  
HST=MULTI-FREQUENCY  
SINGLE AXIAL TESTING

P =PIPE MOUNTED  
PC =PRIMARY CONT.  
PL =PEDESTAL  
QP =QUALIFIED BY  
PIPING ANALYSIS  
RW =RADWASTE  
SA =STATIC ANALYSIS  
SAT=SINGLE FREQUENCY  
SINGLE AXIAL TESTING

SBT=SINGLE FREQUENCY  
BIAXIAL TESTING  
SC =SECONDARY CONT.  
/ =LOCATED ON CONT.  
HALL  
T =MAIN STM. TUNNEL  
N =NEITHER CS OR HS  
Z =PASSIVE ITEM  
(SQRT PAPER NOT  
REQ'D)

QUALIFICATION MILESTONES  
A =REEVALUATION COMPLETE  
B =REQUEST FOR REQUAL OR BID ISSUED  
C =S/W RECOMMENDATION TO LILCO  
D =QUAL DOC RECEIVED  
E =HARDWARE MODIFICATION REQ'D  
F =QUAL DOC APVD & FILED  
G =SQRT PAPER COMPLETE  
H =COPIES OF DOC TO DISTRIBUTION

REVISION 17 DECEMBER 1983

NOTE: NUMBER IN  
'TYPE MTNG' COLUMN IS  
QUANTITY OF ITEMS.

SHOREHAM UNIT 1  
JOB NUMBER 1160002  
LILCO DOCKET 50-322

NSSS LIST  
1-SORT  
ACTIVE

STONE & WEBSTER ENGINEERING CORPORATION  
NSSS CATEGORY I EQUIPMENT  
NSSS QUALIFICATION LEVEL (150 ITEMS)  
IS-316

RUN DATE 12/21/83  
RUN TIME 16.31.41  
PAGE 4

MARK NUMBER	EQUIPMENT DESCRIPTION	NSSS NO.	VENDOR	BLDG ELEV	AVAIL INSP	QUAL REPT	QUAL METH	FREQ	TYPE MTNG	SAFETY FUNC	QUAL STATUS
1E32WFE037	FLOW METER	E32N006	S&K	SC066	YES	DRFA00-1084150C	SAT	30+	P4	CS,HS	G
1E32WHC-053	MSIV LCS HTR	E32B001	GE	SC078	YES	VPF3830-33-1	MBT	15	P4	N	G
1E32WPD035	DIFF PRESS TRANS	E32N059	ROSEMOUNT	SC063	YES	DRFA00-1084-101	SAT	50	F	CS,HS	G
1E32WPD038	DIFF PRESS TRANS	E32N054	ROSEMOUNT					50	F		G
1E32WPT 033	GAGE PRESS TRANS	E32N055	ROSEMOUNT	SC063	YES	DRFA00-1084-101	SAT	50	F	CS,HS	G
1E32WPT 034	ABS PRESS TRANS	E32N056	ROSEMOUNT	SC063	YES	DRFA00-1084-101	SAT	50	F	CS,HS	G
1E41WLS091	LEVEL SWITCH	E41N014	MAGNETROL	SC016	YES	43235-1	MBT	30+	F	CS,HS	G
1E41WLS092	LEVEL SWITCH	E41N015	MAGNETROL	SC027	YES	43235-1	MBT	30+	F2	CS,HS	G
1E41WLS093A	LEVEL SWITCH	E41N002	MAGNETROL	YARD	YES	43235-1	MBT	30+	F	CS,HS	G
1E41WLS093B	LEVEL SWITCH	E41N003	MAGNETROL	YARD	YES	43235-1	MBT	30+	F	CS,HS	G
1E41WP-016	HPCI PUMP&BOOSTER	E41C001	PACIFIC P	SC008	YES	VPF-2740-180-1	DA	23	F	N	G
1E41WTE053	TEMPERATURE ELEMENT	E41N024	PYCO	SC034	YES	DRFA00-1084-91C	SAT	60+	F2	CS,HS	G
1E41WTE054	TEMPERATURE ELEMENT	E41N028	PYCO	SC025	YES	DRFA00-1084-91C	SAT	60+	F2	CS,HS	G
1E41WTE055	TEMPERATURE ELEMENT	E41N029	PYCO	SC017	YES	DRFA00-1084-91C	SAT	60+	F2	CS,HS	G
1E41WTE056	TEMPERATURE ELEMENT	E41N030	PYCO	SC063	YES	DRFA00-1084-91C	SAT	60+	F2	CS,HS	G
1E41WTI141	TEMP INDICATOR	E41R002	WEED	SC008	YES	DRFA00-01364	SA	100	P	CS,HS	G
1E41WTU-002	HPCI TURBINE	E41C002	TERRY	SC008	YES		MBT		F	N	E
1E51WLS091	LEVEL SWITCH	E51N010	MAGNETROL	SC008	YES	43235-1	MBT	30+	F	CS,HS	G
1E51WP-015	RCIC PUMP	E51C001	BINGHAM	SC008	YES	DRF E51C00112	SA	24	F	HS	G

CB =CONTROL BLDG  
CS =COLD SHUT DOWN  
DA =DYNAMIC ANALYSIS  
F =FLOOR MOUNTED  
HS =HOT STANDBY  
MBT=MULTI-FREQUENCY  
BIAXIAL TESTING  
MST=MULTI-FREQUENCY  
SINGLE AXIAL TESTING

P =PIPE MOUNTED  
PC =PRIMARY CONT.  
PL =PEDESTAL  
OP =QUALIFIED BY  
PIPING ANALYSIS  
RH =RADHASTE  
SA =STATIC ANALYSIS  
SAT=SINGLE FREQUENCY  
SINGLE AXIAL TESTING

SBT=SINGLE FREQUENCY  
BIAXIAL TESTING  
SC =SECONDARY CONT.  
/ =LOCATED ON CONT.  
WALL  
T =MAIN STM. TUNNEL  
N =NEITHER CS OR HS  
Z =PASSIVE ITEM  
(SORT PAPER NOT  
REQ'D)

QUALIFICATION MILESTONES  
A =REEVALUATION COMPLETE  
B =REQUEST FOR REQUAL OR BID ISSUED  
C =S/W RECOMMENDATION TO LILCO  
D =QUAL DOC RECEIVED  
E =HARDWARE MODIFICATION REQ'D  
F =QUAL DOC APVD & FILED  
G =SORT PAPER COMPLETE  
H =COPIES OF DOC TO DISTRIBUTION

REVISION 17 DECEMBER 1983

NOTE: NUMBER IN  
'TYPE MTNG' COLUMN IS  
QUANTITY OF ITEMS.

SHOREHAM UNIT 1  
JOB NUMBER 1160002  
LILCO DOCKET 50-322

NSSS LIST  
1-SORT  
ACTIVE

STONE & WEBSTER ENGINEERING CORPORATION  
NSSS CATEGORY I EQUIPMENT  
NSSS QUALIFICATION LEVEL(150 ITEMS)  
IS-316

RUN DATE 12/21/83  
RUN TIME 16.31.41  
PAGE 5

MARK NUMBER	EQUIPMENT DESCRIPTION	NSSS NO.	VENDOR	BLDG ELEV	AVAIL INSP	QUAL REPT	QUAL METH	FREQ	TYPE MTNG	SAFETY FUNC	QUAL STATUS
1E51*TE052	TEMPERATURE ELEMENT	E51N011	PYCO	SC025	YES	DRFA00-1084-91C	SAT	60+	F2	CS,HS	G
1E51*TE053	TEMPERATURE ELEMENT	E51N022	PYCO	SC027	YES	DRFA00-1084-91C	SAT	60+	F2	CS,HS	G
1E51*TE054	TEMPERATURE ELEMENT	E51N023	PYCO	SC063	YES	DRFA00-1084-91C	SAT	60+	F2	CS,HS	G
1E51*TE055	TEMPERATURE ELEMENT	E51N025	PYCO	SC066	YES	DRFA00-1084-91C	SAT	60+	F4	CS,HS	G
1E51*TE056	TEMPERATURE ELEMENT	E51N026	PYCO	SC066	YES	DRFA00-1084-91C	SAT	60+	F4	CS,HS	G
1E51*TI141	THERMOMETER	E51R005	ROBT SHAW	SC008	YES	DRFA00-01364	SA	100	P	CS,HS	G
1E51*TU-005	RCIC TURBINE	E51C002	TERRY	SC008	YES	VPF3622-79(1)-2	SA/HBT	15	F	HS	G
1F11*TO-005	FUEL PREP MACHINE	F11E001	GE	SC176	YES	DRF F0000002-3	DA	N/A	F2	N	G
1F11*TO-008	GEN PURPOSE GRAPPLE	F11E011	GE	SC176	YES	DRF139F11E011L	SA	N/A	F3	N	G
1F13*SL-001	DRYER&SEP SLING	F13E008	CAL PAC	SC176	YES	DRF F13-9	SA	N/A	F	N	G
1F13*TO-016	HEAD STRONGBACK	F13E009	LANCO	SC176	YES	DRF F13-11	SA	N/A	F	N	G
1F14*TO-029	CONT ROD GRAPPLE	F14E002	GE	SC176	YES	DRF139F14E002K	SA	N/A	F	N	G
1F15*CRN-009	REFUEL PLTF ASSY	F15E003	STERN ROG	SC176	YES	DRFF00000022	DA	N/A	F	N	G
1F16*CSK-01	DEF F STRG CONTAIN	F16E009	GE	SC151	YES	139F16E009K1	DA	1	F8	N	G
1F16*RAK-025	POISON CURTAIN	F16E015	BHP	SC151	YES	DRF F16-00009-1	DA	1	F14	N	G
1F16*RAK-09	FUEL RACK(IN VESSL)	F16E006	VOTAW	SC176			DA		F2	N	E
1F16*RAK-10	STRG RACK(CR&DEF F)	F16E004	GE	SC137	YES	DRF F16-0003	DA	13	F3	N	G
1F16*RAK-11	NEW FUEL STRG RACKS	F16E007	GE	SC151	YES	DRF F00-00002	DA	N/A	F17	N	G
1G33*FT012	DIFF PRESS TRANS	G33N041	ROSEMOUNT	SC100	YES	DRFA00-1084101K	SAT	50	F	N	G

CB =CONTROL BLDG  
CS =COLD SHUT DOWN  
DA =DYNAMIC ANALYSIS  
F =FLOOR MOUNTED  
HS =HOT STANDBY  
HBT=MULTI-FREQUENCY  
BIAXIAL TESTING  
HST=MULTI-FREQUENCY  
SINGLE AXIAL TESTING

P =PIPE MOUNTED  
PC =PRIMARY CONT.  
PL =PEDESTAL  
QP =QUALIFIED BY  
PIPING ANALYSIS  
RW =RADWASTE  
SA =STATIC ANALYSIS  
SAT=SINGLE FREQUENCY  
SINGLE AXIAL TESTING

SBT=SINGLE FREQUENCY  
BIAXIAL TESTING  
SC =SECONDARY CONT.  
/ =LOCATED ON CONT.  
HALL  
T =MAIN STM. TURNEL  
N =NEITHER CS OR HS  
Z =PASSIVE ITEM  
(SQRT PAPER NOT  
REQ'D)

QUALIFICATION MILESTONES  
A =REEVALUATION COMPLETE  
B =REQUEST FOR REQUAL OR BID ISSUED  
C =S/W RECOMMENDATION TO LILCO  
D =QUAL DOC RECEIVED  
E =HARDWARE MODIFICATION REQ'D  
F =QUAL DOC APVD & FILED  
G =SQRT PAPER COMPLETE  
H =COPIES OF DOC TO DISTRIBUTION

REVISION 17 DECEMBER 1983

NOTE: NUMBER IN  
'TYPE MTNG' COLUMN IS  
QUANTITY OF ITEMS.

SHOREHAM UNIT 1  
JOB NUMBER 1160002  
LILCO DOCKET 50-322

NSSS LIST  
1-SORT  
ACTIVE

STONE & WEBSTER ENGINEERING CORPORATION  
NSSS CATEGORY I EQUIPMENT  
NSSS QUALIFICATION LEVEL(150 ITEMS)  
IS-316

RUN DATE 12/21/83  
RUN TIME 16.31.41  
PAGE 6

MARK NUMBER	EQUIPMENT DESCRIPTION	NSSS NO.	VENDOR	BLDG ELEV	AVAIL INSP	QUAL REPT	QUAL METH	FREQ	TYPE HTNG	SAFETY FINC	QUAL STATUS
1G33*TE020E	TEMPERATURE ELEMENT	G33N042	PYCO	PC97	YES	DRFA00-01364	SA	100	P	N	G
1G33*TE071	TEMPERATURE ELEMENT	G33N016	PYCO	SC136	YES	DRFA00-1084-91C	SAT	60+	F6	N	G
1G33*TIHER	MOTOR DRIVEN THER	G33R616		CB063	YES	DRFA00-1084-61			F2		G
1H11*PNL-601	REAC&CORE COOL BB	H11P601	GE	CB063	YES	SAI-029QA80PA-B	MBT	14	F	HS,CS	G
1H11*PNL-602	RWCU & RECIRC BN	H11P602	GE	CB063	YES	SAI-029QA80PA-B	MBT	14	F	HS,CS	G
1H11*PNL-603	REACTOR CONTROL B	H11P603	GE	CB063	YES	SAI-029QA80PA-B	MBT	14	F	HS,CS	G
1H11*PNL-608	PHR RANGE NEUT CA	H11P608	GE	CB063	YES	SAI-029QA80PA-B	MBT	22	F	N	G
1H11*PNL-609	TRIP SYS A RPS VB	H11P609	GE	CB063	YES	SAI-029QA80PA-B	MBT	22	F	HS,CS	G
1H11*PNL-611	TRIP SYS B RPS VB	H11P611	GE	CB063	YES	SAI-029QA80PA-B	MBT	22	F	HS,CS	G
1H11*PNL-612	FW & RECIRC INSTR	H11P612	GE	CB063	YES	SAI-029QA80PA-B	MBT	19	F	N	G
1H11*PNL-613	PROCESS INSTR CAB	H11P613	GE	CB063	YES	SAI-029QA80PA-B	MBT	14	F	HS,CS	G
1H11*PNL-614	NSS TEMP LK DET VB	H11P614	GE	CB063	YES	SAI-029QA80PA-B	MBT	22	F	N	G
1H11*PNL-617	DIV 1 RHR RELAY VE	H11P617	GE	CB044	YES	SAI-029QA80PA-B	MBT	19	F	HS,CS	G
1H11*PNL-618	RHR RELAY VB	H11P618	GE	CB044	YES	SAI-029QA80PA-B	MBT	19	F	HS,CS	G
1H11*PNL-620	HPCI RELAY VERT BD	H11P620	GE	CB044	YES	SAI-029QA80PA-B	MBT	14	F	N	G
1H11*PNL-621	IC RELAY VERT BD	H11P621	GE	CB044	YES	SAI-029QA80PA-B	MBT	14	F	HS,CS	G
1H11*PNL-622	INBD ISO V RELAY VB	H11P622	GE	CB044	YES	SAI-029QA80PA-B	MBT	21	F	CS	G
1H11*PNL-623	OUTBD ISO V REL VB	H11P623	GE	CB044	YES	SAI-029QA80PA-B	MBT	21	F	CS	G
1H11*PNL-626	DIV 1 COR SP REL VB	H11P626	GE	CB044	YES	SAI-029QA80PA-B	MBT	14	F	CS	G

CB =CONTROL BLDG  
CS =COLD SHUT DOWN  
DA =DYNAMIC ANALYSIS  
F =FLOOR MOUNTED  
HS =HOT STANDBY  
MBT=MULTI-FREQUENCY  
BIAXIAL TESTING  
HST=MULTI-FREQUENCY  
SINGLE AXIAL TESTING

P =PIPE MOUNTED  
PC =PRIMARY CONT.  
PL =PEDESTAL  
QP =QUALIFIED BY  
PIPING ANALYSIS  
RW =RADWASTE  
SA =STATIC ANALYSIS  
SAT=SINGLE FREQUENCY  
SINGLE AXIAL TESTING

SBT=SINGLE FREQUENCY  
BIAXIAL TESTING  
SC =SECONDARY CONT.  
/ =LOCATED ON CONT.  
WALL  
T =MAIN STN. TUNNEL  
N =NEITHER CS OR HS  
Z =PASSIVE ITEM  
(SORT PAPER NOT  
REQ'D)

QUALIFICATION MILESTONES  
A =REEVALUATION COMPLETE  
B =REQUEST FOR REQUAL OR BID ISSUED  
C =S/W RECOMMENDATION TO LILCO  
D =QUAL DOC RECEIVED  
E =HARDWARE MODIFICATION REQ'D  
F =QUAL DOC APVD & FILED  
G =SORT PAPER COMPLETE  
H =COPIES OF DOC TO DISTRIBUTION

REVISION 17 DECEMBER 1983

NOTE: NUMBER IN  
'TYPE HTNG' COLUMN IS  
QUANTITY OF ITEMS.

SHOREHAM UNIT 1  
JOB NUMBER 1160002  
LILCO DOCKET 50-322

NSSS LIST  
1-SORT  
ACTIVE

STONE & WEBSTER ENGINEERING CORPORATION  
NSSS CATEGORY I EQUIPMENT  
NSSS QUALIFICATION LEVEL (150 ITEMS)  
IS-316

RUN DATE 12/21/83  
RUN TIME 16.31.41  
PAGE 7

MARK NUMBER	EQUIPMENT DESCRIPTION	NSSS NO.	VENDOR	BLDG ELEV	AVAIL INSP	QUAL REPT	QUAL METH	FREQ	TYPE MTNG	SAFETY FUNC	QUAL STATUS
1H11*PNL-627	DIV 2 COR SP REL VB	H11P627	GE	CB044	YES	SAI-029QA80PA-B	HBT	14	F	CS	G
1H11*PNL-628	AUTO BLOWDOWN REL VB	H11P628	GE	CB044	YES	SAI-029QA80PA-B	HBT	14	F	CS	G
1H11*PNL-631	AUTO DEPRESS	H11P631	GE	CB044	YES	SAI-029QA80PA-B	HBT	14	F	CS	G
1H11*PNL-635	DIV 1 RAD MONITOR	H11P635	GE	CB063	YES	SAI-029QA80PA-B	HBT	21	F	N	G
1H11*PNL-636	DIV 2 RAD MONITOR	H11P636	GE	CB063	YES	SAI-029QA80PA-B	HBT	21	F	N	G
1H11*PNL-654	MSIL LISPCKAGE	H11P654	GE	CB063	YES	SAI-029QA80PA-B	HBT	19	F	N	G
1H11*PNL-655	MSIL LISPCKAGE	H11P655	GE	CB063	YES	SAI-029QA80PA-B	HBT	21	F	N	G
1H21*PNL-01	CORE SPRAY RK CH A	H21P001	GE	SC008	YES	SAI-029QA80PA	HBT	11	F	CS	G
1H21*PNL-02	RWCU SYSTEM INST	H21P002	GE	SC151	YES	SAI-029QA80PA	HBT	8	F	N	G
1H21*PNL-04	RX VES L & P RACK	H21P004	GE	SC079	YES	SAI-029QA80PA	HBT	8	F	HS,CS	G
1H21*PNL-05	RX VES L & P RACK	H21P005	GE	SC079	YES	SAI-029QA80PA	HBT	8	F	HS,CS	G
1H21*PNL-06	RECIRC PUMP A RAC	H21P006	GE	SC040	YES	SAI-029QA80PA	HBT	11	F	N	G
1H21*PNL-09	JET PUMP A	H21P009	GE	SC079	YES	SAI-029QA80PA	HBT	11	F	N	G
1H21*PNL-10	JET PUMP INST RK	H21P010	GE	SC079	YES	SAI-029QA80PA	HBT	11	F	N	G
1H21*PNL-14	HPCI INST RACK	H21P014	GE	SC008	YES	SAI-029QA80PA	HBT	8	F	N	G
1H21*PNL-15	MAIN STM FLOW RK A	H21P015	GE	SC040	YES	SAI-029QA80PA	HBT	8	F	N	G
1H21*PNL-16	CS/HPCI LK DET I	H21P016	GE	SC008	YES	SAI-029QA80PA	HBT	11	F	N	G
1H21*PNL-17	RCIC INST RACK	H21P017	GE	SC008	YES	SAI-029QA80PA	HBT	8	F	HS	G
1H21*PNL-18	RHR INST RACK CH	H21P018	GE	SC008	YES	SAI-029QA80PA	HBT	8	F	HS,CS	G

CB =CONTROL BLDG  
CS =COLD SHUT DOWN  
DA =DYNAMIC ANALYSIS  
F =FLOOR MOUNTED  
HS =HOT STANDBY  
HBT=MULTI-FREQUENCY  
BIAXIAL TESTING  
HST=MULTI-FREQUENCY  
SINGLE AXIAL TESTING  
P =PIPE MOUNTED  
PC =PRIMARY CONT.  
PL =PEDESTAL  
QP =QUALIFIED BY  
PIPING ANALYSIS  
RW =RADWASTE  
SA =STATIC ANALYSIS  
SAT=SINGLE FREQUENCY  
SINGLE AXIAL TESTING

SBT=SINGLE FREQUENCY  
BIAXIAL TESTING  
SC =SECONDARY CONT.  
/ =LOCATED ON CONT.  
WALL  
T =MAIN STM. TUNNEL  
N =NEITHER CS OR HS  
Z =PASSIVE ITEM  
(SQRT PAPER NOT  
REQ'D)

QUALIFICATION MILESTONES  
A =REEVALUATION COMPLETE  
B =REQUEST FOR REQUAL OR BID ISSUED  
C =S/W RECOMMENDATION TO LILCO  
D =QUAL DOC RECEIVED  
E =HARDWARE MODIFICATION REQ'D  
F =QUAL DOC APVD & FILED  
G =SQRT PAPER COMPLETE  
H =COPIES OF DOC TO DISTRIBUTION

REVISION 17 DECEMBER 1983

NOTE: NUMBER IN  
'TYPE MTNG' COLUMN IS  
QUANTITY OF ITEMS.

SHOREHAM UNIT 1  
JOB NUMBER 1160002  
LILCO DOCKET 50-322

NSSS LIST  
1-SORT  
ACTIVE

STONE & WEBSTER ENGINEERING CORPORATION  
NSSS CATEGORY I EQUIPMENT  
NSSS QUALIFICATION LEVEL(150 ITEMS)  
IS-316

RUN DATE 12/21/83  
RUN TIME 15.31.41  
PAGE 8

MARK NUMBER	EQUIPMENT DESCRIPTION	NSSS NO.	VENDOR	BLDG ELEV	AVAIL INSP	QUAL REPT	QUAL METH	FREQ	TYPE HTNG	SAFETY FUNC	QUAL STATUS
1H21*PNL-19	CORE SPRAY RK CH	H21P019	GE	SC008	YES	SAI-029QA80PA	HBT	11	F	CS	G
1H21*PNL-21	RHR INST RACK CH	H21P021	GE	SC008	YES	SAI-029QA80PA	HBT	8	F	HS,CS	G
1H21*PNL-22	RECTRC PUMP 3 RAC	H21P022	GE	SC040	YES	SAI-029QA80PA	HBT	8	F	N	G
1H21*PNL-25	MAIN STM FLOW RK	H21P025	GE	SC040	YES	SAI-029QA80PA	HBT	11	F	N	G
1H21*PNL-26	RV LV & PRES RK	H21P026	GE	SC079	YES	SAI-029QA80PA	HBT	11	F	HS,CS	G
1H21*PNL-30	SRH/IRM PREAMP RK	H21P030	GE	SC079	YES	DRF A00-794-16	HBT	4	F	N	G
1H21*PNL-31	SRH/IRM PREAMP RK	H21P031	GE	SC079	YES	DRF A00-794-16	HBT	4	F	N	G
1H21*PNL-32	SRH/IRM PREAMP RK	H21P032	GE	SC079	YES	DRF A00-794-16	HBT	4	F	N	G
1H21*PNL-33	SRH/IRM PREAMP RK	H21P033	GE	SC079	YES	DRF A00-794-16	HBT	4	F	N	G
1H21*PNL-34	HPCI LEAK DET RK	H21P034	GE	SC008	YES	SAI-029QA80PA	HBT	25	F	N	G
1H21*PNL-35	CS/RCIC LH DET I	H21P035	GE	SC040	YES	SAI-029QA80PA	HBT	11	F	N	G
1H21*PNL-36	HPCI LEAK DET RK	H21P036	GE	SC008	YES	SAI-029QA80PA	HBT	11	F	N	G
1H21*PNL-37	RCIC LEAK DET RK	H21P037	GE	SC008	YES	SAI-029QA80PA	HBT	25	F	N	G
1H21*PNL-38	RCIC LEAK DET RK	H21P038	GE	SC040	YES	SAI-029QA80PA	HBT	11	F	N	G
1H21*PNL-41	HN STEAM FLOW IR	H21P041	GE	SC040	YES	SAI-029QA80PA	HBT	11	F	N	G
1H21*PNL-73	HSIV LEAKAGE RK	H21P073	GE	SC063	YES	SAI-029QA80PA	HBT	11	F	N	G
1H21*PNL-74	HSIV LEAKAGE RK	H21P074	GE	SC063	YES	SAI-029QA80PA	HBT	8	F	N	G

CB =CONTROL BLDG  
CS =COLD SHUT DOWN  
DA =DYNAMIC ANALYSIS  
F =FLOOR MOUNTED  
HS =HOT STANDBY  
HBT=MULTI-FREQUENCY  
BIAXIAL TESTING  
HST=MULTI-FREQUENCY  
SINGLE AXIAL TESTING  
P =PIPE MOUNTED  
PC =PRIMARY CONT.  
PL =PEDESTAL  
QP =QUALIFIED BY  
PIPING ANALYSIS  
RW =RADWASTE  
SA =STATIC ANALYSIS  
SAT=SINGLE FREQUENCY  
SINGLE AXIAL TESTING

SBT=SINGLE FREQUENCY  
BIAXIAL TESTING  
SC =SECONDARY CONT.  
/ =LOCATED ON CONT.  
WALL  
T =MAIN STM. TUNNEL  
N =NEITHER CS OR HS  
Z =PASSIVE ITEM  
(SQRT PAPER NOT  
REQ'D)

QUALIFICATION MILESTONES  
A =REEVALUATION COMPLETE  
B =REQUEST FOR REQUAL OR BID ISSUED  
C =S/W RECOMMENDATION TO LILCO  
D =QUAL DOC RECEIVED  
E =HARDWARE MODIFICATION REQ'D  
F =QUAL DOC APVD & FILED  
G =SQRT PAPER COMPLETE  
H =COPIES OF DOC TO DISTRIBUTION

REVISION 17 DECEMBER 1983

NOTE: NUMBER IN  
'TYPE HTNG' COLUMN IS  
QUANTITY OF ITEMS.