



A Centerior Energy Company

EDISON PLAZA
300 MADISON AVENUE
TOLEDO, OHIO 43652-0001

December 13, 1994

Ohio Environmental Protection Agency
Division of Surface Water
CM&E - Permit Compliance Unit
1800 Watermark Drive
P.O. Box 1049
Columbus, Ohio 43215

Ladies and Gentlemen:

Subject: Submittal of the November 1994 Wastewater Report

Attached is the November 1994 Wastewater Report for the Davis-Besse Nuclear Power Station (DBNPS), Unit Number 1, Permit Number 2IB00011*ED.

If you have any questions, please contact Mr. William T. O'Connor, Manager - Regulatory Affairs, at (419) 249-2366.

Very truly yours,

John K. Wood
Plant Manager
Davis-Besse Nuclear Power Station

TKW/lkg

Attachments

cc: Z. A. Clayton, Ohio Environmental Protection Agency
U. S. Nuclear Regulatory Commission Document Control Desk

9412220226 941130
PDR ADDCK 05000346
R PDR

JE23

TOLEDO EDISON COMPANY
 DAVIS-BESSE NUCLEAR
 POWER STATION - UNIT NO. 1
 300 MADISON AV. MSTOP 2101
 TOLEDO 43652 OTTAWA

2IB00011001

NOV 1994

1 1

12/17/93 OH0003786

001 DISCHARGE TO LAKE ERIE

FORM

TOLEDO EDISON

J. Sturdavant

	1 999 WATER TEMP. F	3 1 PH S.U.	1 999 CONDUIT FLOW MGD	3 1 CHLOR FREE A MG/L
	00011	00400	50050	50064
01	53.3	8.3	21.3	AA
02	51.0	8.2	25.3	AA
03	49.8	8.2	33.4	AA
04	51.0	8.0	49.4	AA
05	52.0	8.1	46.1	AA
06	52.6	7.8	49.8	AA
07	51.2	8.1	47.8	AA
08	50.5	8.1	45.7	AA
09	50.3	8.2	53.3	AA
10	49.7	8.2	51.0	AA
11	49.7	8.3	57.1	AA
12	49.3	8.1	47.7	AA
13	49.8	8.0	39.1	AA
14	51.0	8.0	39.3	AA
15	52.4	8.0	39.1	AA
16	53.7	8.2	36.1	AA
17	54.7	8.4	27.3	AA
18	56.8	8.5	27.1	AA
19	53.5	8.5	33.5	AA
20	54.6	8.6	30.1	AA
21	52.5	8.7	29.0	AA
22	53.6	8.7	30.4	AA
23	50.9	8.7	29.8	AA
24	49.2	8.7	33.7	AA
25	49.7	8.8	30.1	AA
26	48.9	8.8	28.0	AA
27	50.3	8.8	26.9	AA
28	51.6	8.8	28.9	AA
29	48.8	8.7	28.3	AA
30	49.4	8.7	35.4	AA
31				
	1541.8	---	1100.0	0.0
	51.0	---	37.0	0.0
	56.8	8.8	57.1	0.0
	48.8	7.8	21.3	0.0

AA: The free available chlorine detection limit is 0.05 mg/L using the direct amperometric method.

REPORTER

12-13-94

A K Wood Hurk

Plant Manager

2IB00011001



TOLEDO EDISON COMPANY
DAVIS-BESSE NUCLEAR
POWER STATION - UNIT NO. 1
300 MADISON AV. NSTOP 2101
TOLEDO 43652 OTTAWA

2IB00011002

NOV 1994

1 1 12/17/93 OH0003786

002 OUTFALL TOUSSAINT RIVER

FORM

TOLEDO EDISON

J. Sturdavant

	3 1 PH S.U.	3 1 RESIDU P. NFL MG/L	3 1 O&G TOTAL MG/L	1 999 CONDUIT FLOW MGD
	00400	00530	00550	50050
01				0.158
02		3.8		0.068
03			1.7	0.068
04				0.158
05				0.284
06				0.104
07				0.068
08				0.188
09	8.0	4.7		0.518
10			1.2	0.068
11				0.068
12				0.068
13				0.068
14				0.068
15	7.9			0.074
16		5.1		0.068
17			AA	0.068
18				0.068
19				0.068
20				0.068
21				0.074
22	8.1			0.068
23		11.1		0.068
24			AA	0.068
25				0.068
26				0.068
27				0.224
28				0.158
29				0.068
30				0.068
31				
	---	24.7	2.9	3.300
	---	5.3	0.7	0.100
	8.1	11.1	1.7	0.518
	7.9	3.8	1.2	0.068

AA: The Oil and Grease detection limit is 1.0 mg/L using the partition-gravimetric method.

REPORTER

12-13-94

AK Wood Hur

Plant Manager

2IB00011002



MONTHLY REPORT FORM

4500

TOLEDO EDISON COMPANY
DAVIS-BESSE NUCLEAR
POWER STATION - UNIT NO. 1
300 MADISON AV. NSTOP 2101
TOLEDO 43652 OTTAWA

2IB00011003

NOV 1994

1 1

12/17/93 OH0003786

003 OUTFALL BAVARRE MARSH

FORM

TOLEDO EDISON

J. Sturdavant

3	1
1	999
RESIDU	CONDUI
T. NFL	FLOW
MG/L	MGD

00530	50050
-------	-------

01	0.222
02	0.222
03	0.222
04	0.222
05	0.222
06	0.222
07	0.222
08	0.222
09	0.222
10	0.222
11	0.222
12	0.222
13	0.222
14	0.222
15	0.222
16	0.222
17	0.222
18	0.222
19	0.222
20	0.222
21	0.222
22	0.222
23	0.222
24	0.222
25	0.222
26	0.222
27	0.222
28	0.222
29	0.222
30	0.222
31	

15.5	6.660
15.5	0.222
15.5	0.222
15.5	0.222

REPORTER

12-12-94

DK Wood

Plant Manager

2IB00011003



MONTHLY REPORT FORM

4500

TOLEDO EDISON COMPANY
DAVIS-BESSE NUCLEAR
POWER STATION - UNIT NO. 1
300 MADISON AV. MSTOP 2101
TOLEDO

43652 OTTAWA

2IB00011601

NOV 1994

1 1

12/17/93

080003786

601 DISCHARGE STP

FORM

TOLEDO EDISON

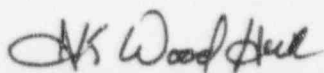
J. Sturdavant

	3 1 COLOR SEVER UNITS	3 1 ODOR SEVER UNITS	3 1 TURBID SEVER UNITS	1 999 CONDUI FLOW MGD	3 1 BOD 5 DAY MG/L	3 1 RESIDU T. WFL MG/L
	00083	01330	01350	50050	00310	00530
01	1	1	1	0.027	8	
02	1	1	1	0.029		21.6
03	1	1	1	0.029		
04	1	0	1	0.028		
05	AN	AN	AN	0.027		
06	AN	AN	AN	0.027		
07	1	0	2	0.027		
08	1	0	1	0.028	AA	
09	0	0	1	0.035		5.6
10	0	0	2	0.024		
11	1	0	1	0.014		
12	AN	AN	AN	0.029		
13	AN	AN	AN	0.026		
14	1	0	1	0.026		12.7
15	1	0	1	0.022	6	
16	1	0	1	0.022		
17	1	0	1	0.018		
18	1	0	1	0.010		
19	AN	AN	AN	0.033		
20	AN	AN	AN	0.033		
21	1	0	1	0.033	5	
22	1	0	1	0.024		11.2
23	1	0	1	0.012		
24	1	0	1	0.011		
25	1	0	1	0.011		
26	AN	AN	AN	0.018		
27	AN	AN	AN	0.018		
28	0	0	1	0.018		
29	0	0	0	0.021	6	
30	0	0	1	0.022		11.8
31						
	17	3	23	0.702	25	62.9
	1	0	1	0.027	5	12.4
	1	1	2	0.035	8	21.6
	0	0	0	0.010	5	5.6

AA: The BOD detection limit is 4.0 mg/L using the electrode method.

REPORTER

12-13-94



Plant Manager

2IB00011601



TOLEDO EDISON COMPANY
DAVIS-BESSE NUCLEAR
POWER STATION - UNIT NO. 1
300 MADISON AV. NSTOP 2101
TOLEDO 43652 OTTAWA

2IB00011602

NOV 1994

1

1

12/17/93

OH0003786

602 LOW VOLUME WW SETTLING BASIN OVERFLOW

FORM

TOLEDO EDISON

J. Sturdavant

	1 999 CONDU FLOW MGD	3 1 RESIDU T. WFL MG/L	3 1 O&G TOTAL MG/L
	50050	00530	00550
01	0.282		
02	0.282	8.2	
03	0.282		2.1
04	0.282		
05	0.282		
06	0.282		
07	0.282		
08	0.282		
09	0.282		
10	0.282		
11	0.282		
12	0.282		
13	0.282		
14	0.282		
15	0.282		
16	0.282	5.4	
17	0.282		2.4
18	0.282		
19	0.282		
20	0.282		
21	0.282		
22	0.282		
23	0.282		
24	0.282		
25	0.282		
26	0.282		
27	0.282		
28	0.282		
29	0.282		
30	0.282		
31			
	8.460	13.7	4.5
	0.282	6.8	2.3
	0.282	8.2	2.4
	0.282	5.4	2.1

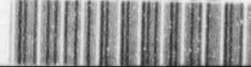
REPORTER

12-3-94

AK Wood Hur

Plant Manager

2IB00011602



TOLEDO EDISON COMPANY
DAVIS-BESSE NUCLEAR
POWER STATION - UNIT NO. 1
300 MADISON AV. NSTOP 2101
TOLEDO 43652 OTTAWA

2IB00011801

NOV 1994

1 1

12/17/93

OH0003786

801 INTAKE PRIOR COOLING OPERATION

FORM

TOLEDO EDISON

J. Sturdavant

1
999
WATER
TEMP.
F

00011

01	51.9
02	50.3
03	49.5
04	50.6
05	51.8
06	52.6
07	49.9
08	50.6
09	49.3
10	48.7
11	48.4
12	48.6
13	47.8
14	48.6
15	49.6
16	49.6
17	51.8
18	52.7
19	49.5
20	48.9
21	57.6
22	50.1
23	46.6
24	44.1
25	42.9
26	43.8
27	43.2
28	44.3
29	43.0
30	41.8
31	

1458.1
49.0
57.6
41.8

