

## STATION PROCEDURE REVISION COVER SHEET

ID/IX

Revision Description This revision  
updates the NARS form  
section to reflect  
new NARS form and  
procedure changes.

QEP  
Chapter

110-2  
Procedure

D. Sessan  
Originator

4  
Revision

This procedure is required to be implemented prior to \_\_\_\_\_

Date

because of \_\_\_\_\_

DRAFT REVIEW

Tech. Staff Supervisor

Date

Department Head

Date

Sessan  
Originator

8.29.83  
Date

FINAL APPROVAL

J. P. ...  
Dep't. Head

8.30.83  
Date

G. Tietz  
Tech. Staff Supervisor

8/31/83  
Date

L. Herwer  
Asst. Supt.

8/31/83  
Date

AUTHORIZATION

M. J. ...  
Station Superintendent

9/6/83  
Effective Date

INSTRUCTIONS FOR REVISION INSERTIONREMOVE

QEP 110-0 Rev. 10  
QEP 110-2 Rev. 3

INSERT

QEP 110-0 Rev. 11  
QEP 110-2 Rev. 4

REVISION RECEIPT FORM

Please sign and date below, and return this sheet to the Officer Supervisor -  
 Quad Cities Station. Your Station Procedure copy number is 37.

Signature

Date

8310110327 831005  
 PDR ADOCK 05000254  
 F PDR

-1-(final)

APPROVED

NOV 6 1981

Q.C.O.S.R.

ID/1A,1B

STATION DIRECTOR

110-0  
Station Director

Rev. 11      09-06-83

110-1  
Station Director Implementing Procedure

Rev. 8      12-23-82

110-2  
Acting Station Director (Shift Engineer)  
Implementing Procedure

Rev. 4      09-06-83

110-T1  
RCT Task Prioritization

Rev. 1      04-15-82

110-T2  
Flow Chart for Rapid Off-Site  
Protective Decisions

Rev. 1      06-23-83

APPROVED  
SEP 06 1983  
Q.C.O.S.R

ACTING STATION DIRECTOR  
(SHIFT ENGINEER)  
IMPLEMENTING PROCEDURE

QEP 110-2  
Revision 4  
August 1983

ID/3T

A. PURPOSE

The purpose of this procedure is to outline the method to implement the GSEP duties of the Acting Station Director (Shift Engineer, or Shift Foreman).

B. REFERENCES

1. QEP 200-T1, Emergency Action Levels (EAL's).
2. QEP 200-T2, EAL - Procedure Cross Reference.
3. QEP 310-1, Initial Notification.
4. QEP 310-T1, Emergency Organization Augmentation.
5. QEP 310-T2, NARS Form.
6. QEP 360-2, Plant Evacuation and Assembly.
7. QEP 350-T1, Protective Action Guidelines (PAG's).
8. QEP 110-T2, Flow Chart for Rapid Offsite Protective Decisions.
9. QEP 110-T1, Task Prioritization for RCT Personnel.

C. PREREQUISITES

1. None.

D. PRECAUTIONS

1. None.

E. LIMITATIONS AND ACTIONS

1. A cross-reference is contained in QEP 200-T2 which associates the EAL's with applicable station procedures.
2. A preface is contained in front of the QGA and QOA procedure manuals which lists those procedures which relate to GSEP events. The preface instructs the reactor operator to inform the Shift Engineer of a condition requiring possible classification as a GSEP event.

APPROVED

SEP 06 1983

Q.C.O.S.R.

F. PROCEDURE

1. Classify the event as either a Transportation Accident, Unusual Event, Alert, Site Emergency, or General Emergency using the EAL Table, QEP 200-T1.
2. Perform notifications as follows:
  - a. Transportation Accident:
    - (1) Notify System Power Dispatcher, using the NARS Form. Fill out as much as possible on the form. Instructions on how to fill out the form are given in step F.3 of this procedure.
    - (2) Notify On-Call Duty Person to initiate appropriate GSEP Station Group activation. Refer to QEP 310-T1 for notification scheme.
    - (3) Notify NRC Operations Center using Red Phone.
    - (4) Await further GSEP instructions.
  - b. Unusual Event:
    - (1) Notify System Power Dispatcher, using the NARS Form. Fill out as much as possible on the form. Instructions on how to fill out the form are given in step F.3 of this procedure.
    - (2) Notify On-Call Duty Person to initiate appropriate GSEP Station Group activation. Refer to QEP 310-T1 for notification scheme.
    - (3) Notify NRC Operations Center using Red Phone.
    - (4) Perform necessary immediate and subsequent corrective actions. Await further GSEP instructions.
  - c. Alert:
    - (1) Notify System Power Dispatcher, using the NARS Form if Corporate Command Center is not manned. Otherwise, notify the Corporate Command Center. Fill out as much as possible on the NARS Form. Instructions on how to fill out the form are given in step F.3 of this procedure.
    - (2) Notify On-Call Duty Person to initiate appropriate GSEP Station Group activation. Refer to QEP 310-T1 for notification scheme.
    - (3) Notify NRC Operations Center using Red Phone.
    - (4) Perform necessary immediate and subsequent corrective actions. Await further GSEP instructions.

APPROVED

SEP 06 1988

Q.C.O.S.R.

d. Site Emergency:

- (1) Notify System Power Dispatcher, using the NARS Form if Corporate Command Center is not manned. Otherwise, notify the Corporate Command Center. Fill out as much as possible on the NARS Form. Instructions on how to fill out the form are given in step F.3 of this procedure.
- (2) Sound the assembly/evacuation siren.
- (3) Notify On-Call Duty Person to initiate appropriate GSEP Station Group activation. Refer to QEP 310-T1 for notification scheme.
- (4) Notify NRC Operations Center using Red Phone.
- (5) Perform necessary immediate and subsequent corrective actions. Await further GSEP instructions.

e. General Emergency:

- (1) Notify System Power Dispatcher, using the NARS Form if Corporate Command Center is not manned. Otherwise, notify the Corporate Command Center. Fill out as much as possible on the NARS Form. Instructions on how to fill out the form are given in step F.3 of this procedure. Use QEP 110-T2 to determine offsite protective actions.
- (2) Sound the assembly/evacuation siren.
- (3) Notify On-Call Duty Person to initiate appropriate GSEP Station Group activation. Refer to QEP 310-T1 for notification scheme.
- (4) Notify NRC Operations Center using Red Phone.
- (5) If the Corporate Command Center or the EOF have not been activated notify state and local agencies. Using the NARS (Green) Phone, Dial 23. Notify all parties utilizing the NARS Form.

NOTE

In the case of a General Emergency, the responsible state and local governmental agencies are to be notified within 15 minutes after declaring the condition as a General Emergency. The necessary time should be taken to accurately determine the condition of the emergency, and once the condition is officially declared, the Red Phone and NARS Phone notifications must be completed within 15 minutes. It is not prudent, however, to use excessive amounts of time to classify the emergency and to avoid the inevitable timely notifications that must be made for a General Emergency GSEP classification.

APPROVED

SEP 06 1988

Q.C.O.S.R

- (6) Perform necessary immediate and subsequent corrective actions. Await further GSEP instructions.
3. NARS Form. Using the letter designations in each of the sections of the NARS form, describe the information as follows:
- Fill in the time and date in upper left corner. This information is not transmitted. It is the time and date the NARS message is received.
  - Section 1 - Classify status.
  - Section 2 - Name the site affected. (IPRA Vol # is for the state of Illinois use.)
  - Section 3 - Classify accident using GSEP, its annex, and QEP 200-T1.
  - Section 4 - Release status.
    - "X" [A] None if there is no potential for a release, A release is not occurring, or a release has terminated.
    - "X" [B] Potential if there is a possibility of a release occurring. Considering the actual or potential degradation of the affected station.
    - "X" [C] OCCURRING if a release is in progress.
    - "X" [D] TERMINATED if a release HAD occurred and HAS been terminated.
  - Section 5 - Classify type of release.
  - Section 6 - write the time and date the incident occurred at the affected station.
  - Section 7 - write the time and date the accident was classified by the authorized individual.

NOTE

As the GSEP facilities are activated the authority to classify an accident will shift.

Authority to  
Classify an  
Accident

	GSEP Facilities Activated			
	CR	TSC	CCC	EOF
Shift Engineer *	X			
Station Director	X	X		
CCC Director			X	
Recovery Manager				X

\*The Shift Engineer is normally the initial GSEP Station Director and as such has the authority for the initial classification of an accident and recommending protective actions.

APPROVED  
SEP 06 1980  
Q.C.O.S.R.



- i. Section 8 - Wind data. Fill in direction wind is from. Check one only. Read across.
- j. Section 9 - Recommended protection actions.
  - (1) Check Box A if there is no action expected of governmental officials. This would most likely occur during an Unusual Event but could apply to the Alert or Transportation Accident Classes.
  - (2) Check Box B if you advise the governmental officials to prepare for future action involving the public. This is most likely to occur during an Alert or a Site Area Emergency but could apply to a Transportation Accident.
  - (3) Check Box C and indicate the recommended protective action if the public is to be involved. This is most likely to occur for a Site Area or General Emergency and Transportation Accident. Reference flow chart for initial PAG's and GSEP Table 6.3-1. In Wisconsin and Iowa protective actions beyond two miles in the three downwind sectors are taken, not to a fixed 5 to 10 miles distance as in Illinois, but to a distance R. R is the range, to the next whole mile, at which the projected dose is 1 rem whole body or 5 rem thyroid.
  - (4) If there is a release of radioactivity in liquid sufficient to create a Site or General emergency, check Box L and give the name of the nearest downstream public water intake:  
  
QC - Quad City Area (E. Moline, etc.)
  - (5) Check Box M if there is a General Emergency involving a gaseous release and specify the distance as 10 miles.
- k. Section 10 - Self explanatory.
- l. Section 11 - If you are sending a NARS message give the NARS code. If you are receiving a NARS message, enter it in the box. Be sure to ask for it if the sender omits it.
- m. Section 12 - Self-explanatory.
- n. Section 13 - If you receive a NARS message be sure to verify the initial call. Verification of subsequent calls related to the same event is optional.
- o. Section 14 - Self-explanatory. Enter if known; if not, find out ASAP.

APPROVED  
SEP 06 1983  
Q.C.O.S.R.

- p. Completed NARS forms (both copies) are forwarded to the GSEP Coordinator.

NOTE

Use QEP 310-T4, Flow Chart for NARS Notification,  
to aid in completing NARS form.

4. Prioritization of Tasks for RCT Personnel: Samples should be obtained in the order listed in QEP 110-T1 if practicable.

G. CHECKLISTS

1. None.

H. TECHNICAL SPECIFICATION REFERENCES

1. None.

APPROVED  
SEP 06 1993  
J.C.O.S.R.



## STATION PROCEDURE REVISION COVER SHEET

ID/IX

Revision Description This revisionprovides a flowchart  
and updates the procedure  
and form to reflect  
changes to the NARS formQEP  
Chapter310-1 Rev. 6  
310-T2 Rev. 2  
310-T4 Rev. 1  
ProcedureD. Jessen  
Originator

Revision

This procedure is required to be implemented prior to \_\_\_\_\_

Date

because of \_\_\_\_\_

DRAFT REVIEW

Tech. Staff Supervisor

Date

Department Head

Date

Originator

Date

8-15-83FINAL APPROVAL

Dept. Head

Date

Tech. Staff Supervisor

Date

Asst. Supt.

Date

AUTHORIZATIONL. Hermon for 8/17/83  
Station Superintendent Effective DateINSTRUCTIONS FOR REVISION INSERTIONREMOVEQEP 310-0 Rev. 15  
QEP 310-1 Rev. 5  
QEP 310-T2 Rev. 1INSERTQEP 310-0 Rev. 16  
QEP 310-1 Rev. 6  
QEP 310-T2 Rev. 2  
(New) QEP 310-T4 Rev. 1REVISION RECEIPT FORMPlease sign and date below, and return this sheet to the Officer Supervisor -  
Quad Cities Station. Your Station Procedure copy number is 27.

Signature

Date

-1-(final)

APPROVED

NOV 6 1981

Q.C.O.S.R.

ID/2Q,2R

NOTIFICATION OF  
RESPONSIBLE AUTHORITIES

<u>310-0</u> Notification of Responsible Authorities	Rev. 16	08-17-83
<u>310-1</u> Initial Notification	Rev. 6	08-17-83
<u>310-T1</u> Guidance for Augmentation of the On-Site Emergency Organization within 30 Minutes	Rev. 6	05-20-83
<u>310-T2</u> State of Illinois Nuclear Accident Reporting System Form	Rev. 2	08-17-83
<u>310-T3</u> Prioritized Notification Listing	Rev. 9	07-13-83
<u>310-T4</u> Flow Chart for NARS Notification	Rev. 1	08-17-83

APPROVED  
AUG 17 1983  
Q.C.O.S.R.

INITIAL NOTIFICATION

QEP 310-1  
Revision 6  
July 1983

ID/2R

A. PURPOSE

The purpose of this procedure is to outline GSEP responses and the initial notification of offsite authorities for emergency conditions.

B. REFERENCES

1. 10 CFR 20.403.
2. 10 CFR 50.72.
3. ED-17.
4. QEP 310-T1.
5. QEP 320-1.
6. QEP 440-1.
7. QEP 310-T2.
8. QEP 310-T4.

C. PREREQUISITES

1. None.

D. PRECAUTIONS

1. When making initial notifications to any agency or control center for purposes of classifying, upgrading or downgrading an event, the following should be used as a list of minimum information that should be transmitted.
  - a. Name and title of the reporting person.
  - b. Location and type of incident (i.e., the emergency classification).
  - c. Date and time of incident.
  - d. Whether a release of radioactive material is taking place.
  - e. Potentially affected population and areas.
  - f. Whether protective measures may be necessary.

APPROVED  
AUG 17 1983  
Q.C.O.S.R.

2. If verification of the authenticity of a notification is requested by outside agencies, suggest a call back using outside phone lines but do not provide outside phone number information.

NOTE

Once the NRC is notified of a GSEP condition, a continuous communication channel with the NRC Operations Center shall be maintained open and shall close only when notified and concurred with by the NRC.

E. LIMITATIONS AND ACTIONS

1. Forward completed Nuclear Accident Reporting System (NARS) form to the GSEP Coordinator upon termination of GSEP condition.

F. PROCEDURE

APPROVED

AUG 17 1983

Q.C.O.S.R.

1. GSEP responses.

a. Transportation accident.

- (1) Declare transportation accident condition.
- (2) Notify the System Power Dispatcher, using the Nuclear Accident Reporting NARS Form shown in QEP 310-T2. Instructions on the use of this form are contained in F.2.b.(2) of this procedure and ED-17.
- (3) Notify GSEP station group in accordance with QEP 310-T1 and QEP 320-1.
- (4) Notify the NRC Operations Center. If call is made on the ENS (red) phone, NRC Region III may also answer. If NRC Region III does not answer, NRC Operations Center will contact NRC Region III.
- (5) Dispatch personnel for evaluation if deemed necessary.
- (6) Notify appropriate local agencies as needed (i.e., fire departments, hospitals, etc.)

b. Unusual event.

- (1) Declare an unusual event condition.
- (2) Notify the System Power Dispatcher, using the Nuclear Accident Reporting (NARS) Form shown in QEP 310-T2. Instructions on the use of this form are contained in F.2.b.(2) of this procedure and ED-17.
- (3) Notify GSEP station group in accordance with QEP 310-T1.

- (4) Notify the NRC Operations Center. If call is made on ENS phone, NRC Region III may also answer. If NRC Region III does not answer, NRC Operations Center will contact NRC Region III.
- (5) Notify appropriate local agencies as needed (i.e., fire departments, hospitals, etc.)

c. Alert.

- (1) Declare alert condition.
- (2) Notify the System Power Dispatcher if Corporate Command Center is not manned. Otherwise, notify Corporate Command Center. Use the Nuclear Accident Reporting (NARS) Form shown in QEP 310-T2 for this notification. Instructions on the use of this form are contained in F.2.b.(2) of this procedure and ED-17.
- (3) Notify the NRC Operations Center. If call is made on the ENS (red) phone, NRC Region III may also answer. If NRC Region III does not answer, NRC Operations Center will contact NRC Region III.
- (4) Activate the GSEP station group and augmentation personnel in accordance with QEP 310-T1 and QEP 320-1.
- (5) Activate the On-Site Technical Support Center and the Operational Support Center.
- (6) Notify appropriate local agencies as needed (i.e., fire departments, hospitals, etc.)

APPROVED

d. Site emergency.

AUG 17 1983

- (1) Declare site emergency.
- (2) Notify the System Power Dispatcher if Corporate Command Center is not manned. Otherwise, notify Corporate Command Center. Use the Nuclear Accident Reporting (NARS) Form shown in QEP 310-T2 for this notification. Instructions on the use of this form are contained in F.2.b.(2) of this procedure and ED-17.
- (3) Notify the NRC Operations Center. If call is made on the ENS (red) phone, NRC Region III may also answer. If NRC Region III does not answer, NRC Operations Center will contact NRC Region III.
- (4) Activate the GSEP station group and augmentation personnel in accordance with QEP 310-T1 and QEP 320-1.
- (5) Activate the On-Site Technical Support Center and the Operational Support Center.

Q.C.O.S.R.

- (6) Dispatch personnel for environs monitoring, if required.
- (7) Notify appropriate local agencies as needed (i.e., fire departments, hospitals, etc.)

e. General emergency.

- (1) Declare a general emergency.
- (2) Notify the System Power Dispatcher if Corporate Command Center is not manned. Otherwise, notify Corporate Command Center. Use the Nuclear Accident Reporting (NARS) Form shown in QEP 310-T2 for this notification. Instructions on the use of this form are contained in F.2.b.(2) of this procedure and ED-17.

NOTE

In the case of a General Emergency, the responsible state and local governmental agencies are to be notified within 15 minutes after declaring the condition as a General Emergency. The necessary time should be taken to accurately determine the condition of the emergency, and once the condition is officially declared, the Red Phone and NARS Phone notifications must be completed within 15 minutes. It is not prudent, however, to use excessive amounts of time to classify the emergency and to avoid the inevitable timely notifications that must be made for a General Emergency GSEP classification.

- (3) Using the NARS phone, notify the Illinois ESDA and Rock Island Communications Center of the emergency situation and make recommendations consistent with Section 6.3 of the Generic GSEP. Also notify the Iowa Office of Disaster Services, Clinton County EOC and Scott County EOC, and Whiteside County Sheriff and EOC. Use the Nuclear Accident Reporting (NARS) Form for this notification.

NOTE

The responsibility for notifying state and local agencies of a general emergency condition is given to the Station Director. However, if the CCC or the nearsite EOF have already been activated for a previous emergency declaration, this notification will normally be performed by the CCC Director or Recovery Manager. In addition, if the state EOC is already activated at the time of the general emergency declaration, the CCC Director or Recovery Manager may brief state officials before protective action recommendations are given to local authorities via the Nuclear Accident Reporting System.

APPROVED

AUG 17 1983

Q.C.O.S.R.



- (4) Notify the NRC Operations Center. If call is made on the ENS (red) phone, NRC Region III may also answer. If NRC Region III does not answer, NRC Operations Center will contact NRC Region III.
  - (5) Activate the GSEP station group and augmentation personnel in accordance with QEP 310-T1 and QEP 320-1.
  - (6) Activate the On-Site Technical Support Center and Operational Support Center.
  - (7) Dispatch personnel for environs monitoring, if required. QEP 310-T1 provides guidance for augmentation.
  - (8) Notify appropriate local agencies as needed (i.e., fire departments, hospitals, etc.)
  - (9) Provide plant status updates to the state and local authorities until these functions can be performed by the Command Center Director.
2. Forward completed NARS form to GSEP Coordinator upon termination of GSEP condition.
  3. Agency notifications.
    - a. Nuclear Regulatory Commission.
      - (1) The conditions listed below may or may not require GSEP activation. However, any of these conditions require notification of the NRC Operations Center within one hour and identification that the report is being made pursuant to 10CFR Part 50.72.

NOTE

The Division Vice-President for Nuclear Stations or his designee and News Information Services shall be notified any time the NRC is notified pursuant to 10CFR Part 50.72.

APPROVED  
AUG 17 1983  
Q.C.O.S.R.

- (a) Any event requiring initiation of the licensee's emergency plan or any section of that plan.
- (b) The exceeding of any Technical Specification Safety Limit.
- (c) Any event that results in the nuclear power plant not being in a controlled or expected condition while operating or shut down.
- (d) Any act that threatens the safety of the nuclear power plant or site personnel, or the security of special nuclear material, including instances of sabotage or attempted sabotage.

- (e) Any event requiring initiation of shutdown of the nuclear power plant in accordance with Technical Specification Limiting Conditions for Operation.
- (f) Personnel error or procedural inadequacy which, during normal operations, anticipated operational occurrences, or accident conditions, prevents or could prevent, by itself, the fulfillment of the safety function of those structures, systems, and components important to safety that are needed to (i) shutdown the reactor safely and maintain it in a safe shutdown condition, or (ii) remove residual heat following reactor shutdown, or (iii) limit the release of radioactive material to acceptable levels or reduce the potential for such release.
- (g) Any event resulting in manual or automatic actuation of Engineered Safety Features, including the Reactor Protection System.
- (h) Any accidental, unplanned or uncontrolled radioactive release. (Normal or expected releases from maintenance or other operational activities are not included.)
- (i) Any fatality or serious injury occurring on the site and requiring transport to an off-site medical facility for treatment.
- (j) Any serious personnel radioactive contamination requiring extensive on-site decontamination or outside assistance.
- (k) Strikes of operating employees or security guards, or honoring of picket lines by the employees.
- (l) Any event meeting the criteria of 10CFR Part 20.403 for notification.

NOTE

Even though the requirement for 20.403(b) events is 24 hour notification to NRC Region III, a one hour requirement exists to the NRC Operations Center.

APPROVED

AUG 17 1983

Q.C.O.S.R.

- (2) 20.403 notification of incidents.

- (a) Immediate notification of NRC-Region III:

Each licensee shall immediately notify by telephone and telegraph, mailgram or facsimile, the Director of NRC Region III Office of any incident involving byproduct, source or special nuclear material possessed by him and which may have caused or threatens to cause:

- (i) Exposure of the whole body of any individual to 25 rem or more of radiation; exposure of the skin of the whole body of any individual of 150 rem or more of radiation; or exposure of the feet, ankles, hands or forearms of any individual to 375 rem or more of radiation; or
  - (ii) The release of radioactive material in concentrations which, if averaged over a period of 24 hours, would exceed 5,000 times the limits specified for such materials in Appendix B, Table II; or
  - (iii) A loss of one working week or more of the operation of any facilities affected; or
  - (iv) Damage to property in excess of \$200,000.
- (b) Twenty-four hour notification of NRC Region III:

Each licensee shall within 24 hours notify by telephone and telegraph, mailgram or facsimile, the Director of the NRC Region III Office of any incident involving licensed material possessed by him and which may have caused or threatens to cause:

- (i) Exposure of the whole body of any individual to 5 rem or more of radiation; exposure of the skin of the whole body of any individual to 30 rem or more of radiation; or exposure of the feet, ankles, hands or forearms to 75 rem or more of radiation; or
- (ii) The release of radioactive material in concentrations which, if averaged over a period of 24 hours, would exceed 500 times the limits specified for such materials in Appendix B, Table II; or
- (iii) A loss of one day or more of the operation of any facilities affected; or
- (iv) Damage to property in excess of \$2,000.

b. Illinois Emergency Services and Disaster Agency.

- (1) Using the NARS telephone, or its equivalent, report the information required by the ESDA Nuclear Accident Report Form. (See Environmental Director Implementing Procedure ED-17 and QEP 310-T2.)

APPROVED  
AUG 17 1983  
Q.C.O.S.R.

(2) NARS Form. Using the letter designations in each of the sections of the NARS form, describe the information as follows:

- (a) Fill in the time and date in upper left corner. This information is not transmitted. It is the time and date the NARS message is received.
- (b) Section 1 - Classify status.
- (c) Section 2 - Name the site affected. (IPRA Vol # is for the state of Illinois use.)
- (d) Section 3 - Classify accident using GSEP, its annex, and QEP 200-T1.
- (e) Section 4 - Release status.
  - (1) "X" [A] None if there is no potential for a release, A release is not occurring, or a release has terminated.
  - (2) "X" [B] Potential if there is a possibility of a release occurring. Considering the actual or potential degradation of the affected station.
  - (3) "X" [C] OCCURRING if a release is in progress.
  - (4) "X" [D] TERMINATED if a release HAD occurred and HAS been terminated.
- (f) Section 5 - Classify type of release.
- (g) Section 6 - write the time and date the incident occurred at the affected station.
- (h) Section 7 - write the time and date the accident was classified by the authorized individual.

NOTE

As the GSEP facilities are activated the authority to classify an accident will shift.

Authority to  
Classify an  
Accident

	GSEP Facilities Activated			
	CR	TSC	CCC	EOF
Shift Engineer *	X			
Station Director	X	X		
CCC Director			X	
Recovery Manager				X

APPROVED

AUG 17 1983

Q.C.O.S.R.

\*The Shift Engineer is normally the initial GSEP Station Director and as such has the authority for the initial classification of an accident and ~~recommending protective actions.~~

- (i) Section 8 - Wind data. Fill in direction wind is from. Check one only. Read across.
- (j) Section 9 - Recommended protection actions.
  - (1) Check Box A if there is no action expected of governmental officials. This would most likely occur during an Unusual Event but could apply to the Alert or Transportation Accident Classes.
  - (2) Check Box B if you advise the governmental officials to prepare for future action involving the public. This is most likely to occur during an Alert or a Site Area Emergency but could apply to a Transportation Accident.
  - (3) Check Box C and indicate the recommended protective action if the public is to be involved. This is most likely to occur for a Site Area or General Emergency and Transportation Accident. Reference flow chart for initial PAG's and GSEP Table 6.3-1. In Wisconsin and Iowa protective actions beyond two miles in the three downwind sectors are taken, not to a fixed 5 to 10 miles distance as in Illinois, but to a distance R. R is the range, to the next whole mile, at which the projected dose is 1 rem whole body or 5 rem thyroid.
  - (4) If there is a release of radioactivity in liquid sufficient to create a Site or General emergency, check Box L and give the name of the nearest downstream public water intake:

QC - Quad City Area (E. Moline, etc.)
  - (5) Check Box M if there is a General Emergency involving a gaseous release and specify the distance as 10 miles.
- (k) Section 10 - Self explanatory.
- (l) Section 11 - If you are sending a NARS message give the NARS code. If you are receiving a NARS message, enter it in the box. Be sure to ask for it if the sender omits it.
- (m) Section 12 - Self-explanatory.
- (n) Section 13 - If you receive a NARS message be sure to verify the initial call. Verification of subsequent calls related to the same event is optional.

APPROVED

AUG 17 1983

Q.C.O.S.R.



- (o) Section 14 - Self-explanatory. Enter if known; if not, find out ASAP.
- (p) Completed NARS forms (both copies) are forwarded to the GSEP Coordinator.

NOTE

Use QEP 310-T4, Flow Chart for NARS Notification, to aid in completing NARS form.

APPROVED

AUG 17 1983

C.C.O.S.R.

c. Illinois Department of Nuclear Safety.

(1) Immediate notification:

Each licensee or registrant shall immediately notify the Illinois Department of Nuclear Safety by telephone and telegraph of any incident involving any source of radiation possessed by him and which may have caused or threatens to cause:

- (a) A dose to the whole body of any individual of 25 rem or more of radiation; a dose to the skin of the whole body of any individual of 150 rem or more of radiation; or a dose to the feet, ankles, hands or forearms of any individual of 375 rem or more of radiation; or,
- (b) The release of radioactive material in concentrations which, if averaged over a period of 24 hours, would exceed 5,000 times the limits specified for such materials in Appendix A, Table II (Appendix B of 10CFR 20); or
- (c) A loss of one working week or more of the operation of any facilities affected; or,
- (d) Damage to property in excess of \$100,000.

(2) Twenty-four hour notification:

Each licensee or registrant shall within 24 hours notify the Illinois Department of Nuclear Safety by telephone and telegraph of any incident involving any source of radiation possessed by him and which may have caused or threatens to cause:

- (a) A dose to the whole body of any individual of 5 rem or more of radiation; a dose to the skin of the whole body of any individual of 30 rem or more of radiation; or a dose to the feet, ankles, hands or forearms of 75 rem or more of radiation; or,
- (b) The release of radioactive material in concentrations which, if averaged over a period of 24 hours, would exceed 500 times the limits specified for such materials in Appendix A, Table II (Appendix B of 10CFR 20); or,



- (c) A loss of one day or more of the operation of any facilities affected; or,
- (d) Damage to property in excess of \$1,000.

G. CHECKLISTS

- 1. QEP 310-T2, NARS Form.

H. TECHNICAL SPECIFICATION REFERENCES

- 1. None.

APPROVED  
AUG 17 1963  
Q.C.O.S.R.

QEP 310-T2  
Revision 2  
July 1983

STATE OF ILLINOIS  
MILK ACCIDENT REPORTING SYSTEM FORM

TIME DATE MESSAGE RECEIVED

1 STATUS  
(A) ACTUAL  
(B) INVESTIGATED  
(C) QUAD CITIES-IV  
(D) ZION-V

2 SITE-IPRA VULNERABILITY  
(A) DOWNSTREAM  
(B) LAMAR-III  
(C) QUAD CITIES-IV  
(D) ZION-V

3 ACCIDENT CLASSIFICATION  
(A) TRANSPORTATION ACCIDENT  
(B) UPGRADE  
(C) ALERT  
(D) SITE AREA EMERGENCY  
(E) CHEMICAL EMERGENCY  
(F) RECOVERY  
(G) HAZARDOUS CONDITION  
(H) OTHER

4 MILK STATUS  
(A) NONE  
(B) POTENTIAL  
(C) OCCURRING  
(D) TERMINATED

5 TYPE OF RELEASE  
(A) RADIOACTIVE GAS  
(B) RADIOACTIVE LIQUID  
(C) NO RELEASE  
(D) UNKNOWN

6 INCIDENT OCCURRED  
TIME DATE  
TIME DATE

7 ACCIDENT CLASSIFIED  
TIME DATE

8 WIND DIRECTION DATA (Check only, based on report)

WIND FROM	DIRECTION	WIND SPEED	SECTIONS AFFECTED
(A) N	349-41	S	H, J, K
(B) NW	12-33	SSW	J, K, L
(C) NE	34-56	SW	K, L, M
(D) E	57-78	WSW	L, M, N
(E) SE	79-101	W	M, N, P
(F) S	102-123	WSW	N, P, Q
(G) SW	124-146	W	P, Q, R
(H) SSE	147-168	WSW	Q, R, A
(I) S	169-191	N	R, A, B
(J) SSW	192-213	WSW	A, B, C
(K) SW	214-236	W	B, C, D
(L) SSW	237-258	WSW	C, D, E
(M) S	259-281	E	D, E, F
(N) SSW	282-303	WSW	E, F, G
(O) SW	304-326	W	F, G, H
(P) SSW	327-348	WSW	G, H, J

9 IN CORRECTED PROTECTIVE ACTIONS

(A) NOT APPLICABLE (INITIAL NOTIFICATION FOR INFORMATION ONLY)  
(B) PREPARE FOR POSSIBLE ACTION INVOLVING THE PUBLIC, TO INCLUDE NOTIFICATION  
(C) NOTIFY PUBLIC TO TAKE THE FOLLOWING PROTECTIVE ACTIONS:

IN ILLINOIS	SHELTER	EVAACUATE	IN WISCONSIN/INDIANA
3-5 MILE RADIUS	(D)	(J)	0-2 MILE RADIUS
0-5 MILE RADIUS	(E)	(K)	0-5 MILE RADIUS
2-5 MILES FOR ZONE (I) DOWNDRAFT SECTIONS	(F)	(L)	2- (H) MILES
5-10 MILES FOR ZONE (I) DOWNDRAFT SECTIONS	(G)	(M)	(C) 10 TO 100 MILES (B) IS THE RANGE FROM TO THE PNE ENDS (J)

(I) DISCONTINUE USE OF POTENTIALLY AFFECTED WATER IN \_\_\_\_\_ LOCATIONS(S)  
(J) FOR MILK PRODUCEING ANIMALS ON STORED FEED IN DOWNDRAFT SECTIONS OUT TO \_\_\_\_\_ MILES.

10. MESSAGE REPORTED BY: NAME OF CALLER  
ORGANIZATION: TELEPHONE NO.:

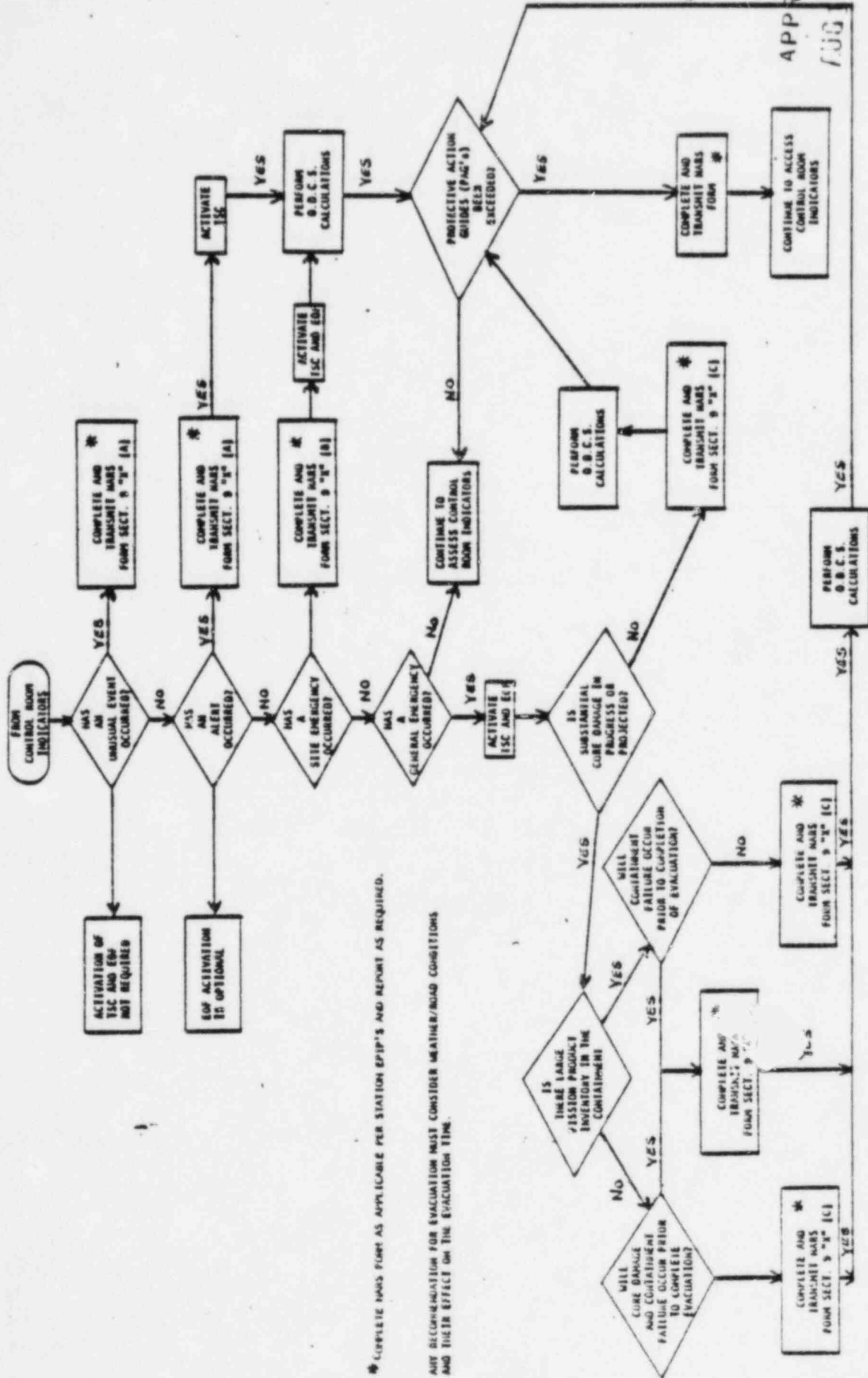
11. MARS DATA FORM USED BY SENDER: ☐

12. MESSAGE RECEIVED BY: YOUR NAME  
13. MESSAGE VERIFIED BY: NAME TIME ORGANIZATION  
14. OFFICE COPY OFFICER: NAME TELEPHONE

APPROVED  
AUG 17 1983  
C.C.O.S.R

QEP 310-T4  
Revision 1  
July 1983

# FLOW CHART FOR NARS NOTIFICATION



APPROVED  
JUL 17 1983

O.C.O.S.R

50-254

NRC

The new revision of the Nuclear Accident Reporting System (NARS) form becomes effective on October 1, 1983. The attached procedures reflect this new revision and should be implemented at that time. These procedures are:

QEP 110-2, Revision 4  
QEP 310-1, Revision 6  
QEP 310-T2, Revision 2  
QEP 310-T4, Revision 1

If you have any questions, please contact Randy Buss at extension 199.

/skk

2010/11  
0/2

37

