

EFFLUENT AND WASTE DISPOSAL SEMIANNUAL
REPORT
RADIOLOGICAL IMPACT ON MAN
FOR
FIRST AND SECOND QUARTERS, 1983

VERMONT YANKEE NUCLEAR POWER STATION

TABLE OF CONTENTS

	<u>Page</u>
1.0 INTRODUCTION.....	1
2.0 METEOROLOGICAL DATA.....	2
3.0 RADIOACTIVITY RELEASES.....	3
3.1 Liquid Releases.....	3
3.2 Gaseous Releases.....	3
4.0 DOSE ASSESSMENT.....	4
4.1 Organ Doses to Individuals from Receiving-Water Exposure Pathways.....	4
4.2 Individual Whole-Body and Skin Doses from Noble Gaseous Effluents.....	4
4.3 Organ Doses to Individuals from Radioactive Iodine and Particulates in Gaseous Effluents.....	6
4.4 Whole-Body Doses in Unrestricted Areas from Direct Radiation.....	8
4.5 Whole-Body Doses to the General Population from all Receiving Water Related Pathways.....	9
4.6 Doses to the General Population and Average Individual within Fifty Miles from Gaseous Effluents.....	9
REFERENCES.....	11
FIGURES.....	12-13
TABLES.....	14-46
APPENDIX A - SUPPLEMENTAL INFORMATION.....	A1

LIST OF TABLES

<u>Table No.</u>	<u>Title</u>
1A	Gaseous Effluents - Summation of all Releases
1B	Gaseous Effluents - Elevated Releases
1C	Gaseous Effluents - Routine Ground Level Releases
1D	Gaseous Effluents - Non-Routine Releases
2A	Liquid Effluents - Summation of all Releases
3	Solid Waste and Irradiated Fuel Shipments
4-A to 4-H	Vermont Yankee Joint Frequency Distribution January - March, 1983
5-A to 5-H	Vermont Yankee Joint Frequency Distribution April - June, 1983
6	Quarterly Average X/Q and D/Q Values for Selected Receptors
7	Summary of Radiological Impact on Man

LIST OF FIGURES

<u>Figure No.</u>	<u>Title</u>
1A	Vermont Yankee, January - March 1983, Upper Level Wind Rose
1B	Vermont Yankee, April - June 1983, Upper Level Wind Rose

VERMONT YANKEE
EFFLUENT AND WASTE DISPOSAL SEMIANNUAL REPORT
RADIOLOGICAL IMPACT ON MAN
JANUARY - JUNE 1983

1.0 INTRODUCTION

Using actual measured effluent and meteorological data for the first six months of 1983, this report estimates potential doses from radioactive effluents that could affect individuals and the general population near the Vermont Yankee Nuclear Power Station. Tables 1 through 3 list the recorded radioactive effluents and solid waste for this semiannual period. Tables 4 and 5 report the cumulative joint frequency distribution of wind speed, wind direction, and atmospheric stability observed during the first half of 1983. Figures 1A and 1B summarize wind speed and direction in a wind rose. Table 6 lists the calculated X/Q and D/Q values at different points of interest based on the meteorological record presented in Tables 4 and 5 for both quarters. Table 7 summarizes the potential radiological dose commitments to individuals and the general population surrounding the plant. Supplemental information concerning the plant's regulatory release limits and the methods used in measuring released radioactivity is given in Appendix A. All estimates of potential dose for the first six months of 1983 were within the dose objectives set forth in Appendix I to 10CFR50. During the first half of 1983 the plant realized net capacity factors (design MWe) of 58.6 percent and 6.9 percent for the first and second quarters, respectively.

2.0 METEOROLOGICAL DATA

Meteorological data was collected during this reporting period from the site's 300-foot met tower located approximately 2,200 feet northwest of the reactor building, and about 1,400 feet from the plant stack. The 300-foot tower is approximately the same height as the primary plant stack (94 meters) and is designed to meet the requirements of Regulatory Guide 1.23 for meteorological monitoring. Combined data recoverability for the first and second quarters was 56.0 percent and 69.0 percent, respectively.

X/Q and D/Q values were derived for all receptor points from the site meteorological record for each quarter using a straight-line airflow model. All dispersion and air concentration factors have been calculated employing appropriate source configuration considerations, as described in Regulatory Guide 1.111 (Reference 1), plus a source depletion model as described in "Meteorology and Atomic Energy - 1968" (Reference 2), and deposition velocities as given by Pelletier and Zimbrick (Reference 3). Changes in terrain elevations in the site environment were also factored into meteorological models. A full description of the methods used to evaluate air dispersion phenomenon at the plant site is given in Vermont Yankee's 10CFR Part 50, Appendix I evaluation (Reference 4).

3.0 RADIOACTIVITY RELEASES

3.1 Liquid Releases

There were no liquid releases of radioactivity from the plant during this semiannual period.

3.2 Gaseous Releases

All gaseous effluent recorded for the first half of the year are listed in Tables 1A through 1D. All gaseous effluents were recorded as continuous in nature, and were released to the environment via the 94 meter stack located approximately 875 feet north of the reactor building. As indicated in Table 1A, all gaseous effluents were well within the plants operating Technical Specification for gaseous releases of radioactivity.

In addition, there were no unplanned or non-routine releases of radioactivity in gaseous effluents during this reporting period.

4.0 DOSE ASSESSMENT

Following the guidance of NUREG-0473 (Reference 7), nuclides in particulate form which were not detected above the lower limit of detection (LLD) have been reported as "less than" the LLD and have not been included in the dose calculations. However, the release rate of noble gases from the plant stack, after treatment of the gas stream from the air ejector through the augmented off-gas system, is so low that no noble gases are detectable above the LLD. Therefore, as a conservative approach for the noble gas releases, it has been assumed for dose calculation purposes that the principal noble gases measured in the off-gas mix at the air ejector are present at the LLD level determined for the plant stack.

4.1 Organ Doses to Individuals from Receiving-Water Exposure Pathways

There were no routine or accidental liquid releases from Vermont Yankee during the first half of 1983. As a result, no receiving water exposure pathways could contribute to any whole body or organ doses to individuals in unrestricted areas.

4.2 Individual Whole-Body and Skin Doses from Noble Gaseous Effluents

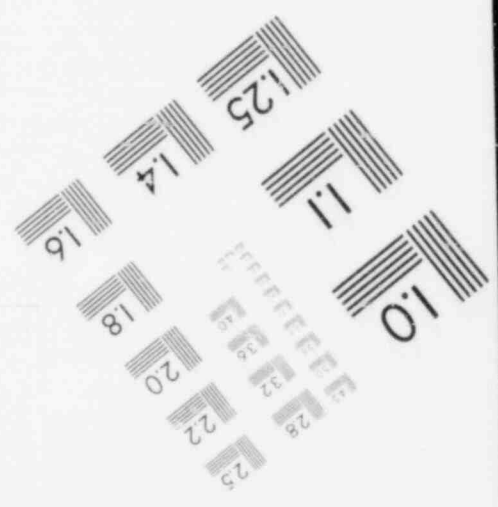
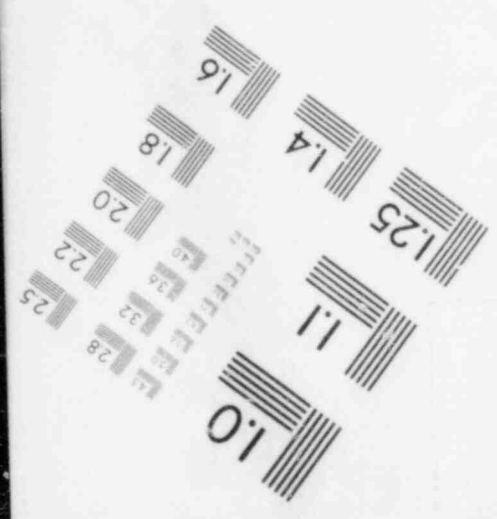
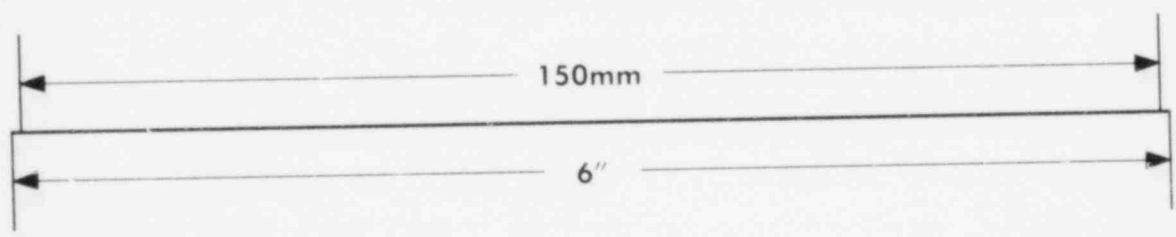
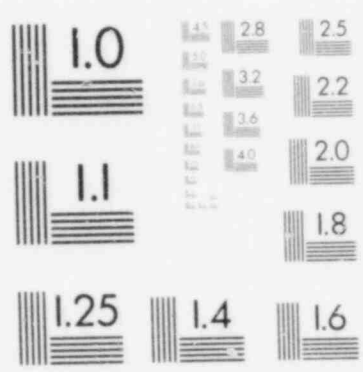
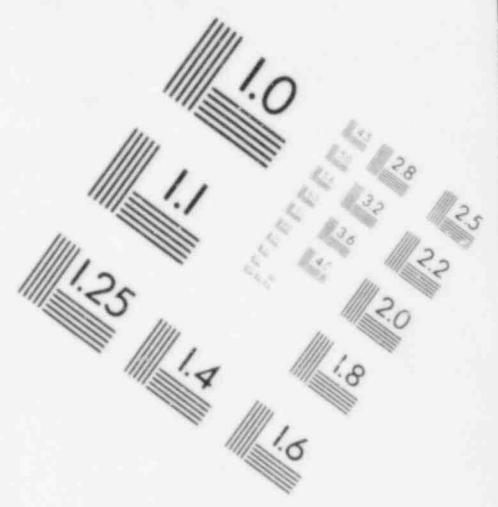
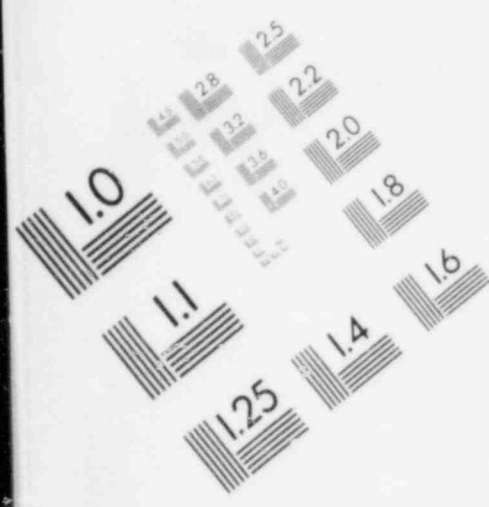
Based on the method of sector averaging discussed in "Meteorology and Atomic Energy - 1968" (Reference 2), and utilizing the site meteorological data recorded for this reporting period, the point of maximum off-site ground level air concentration of radioactive materials in gaseous effluents was determined for each quarter. Terrain height in the vicinity of the effluent stack was taken into account in calculating these effluent ground level concentrations. For the first quarter of 1983 the point of maximum off-site ground level air concentration was determined to be approximately in the S sector, 3864 meters from the plant stack, and for the second quarter this location was approximately in the WNW sector, 2415 meters from the plant stack. The undepleted X/Q 's at these locations were calculated to be $4.2E-07 \text{ sec/m}^3$ and $5.3E-07 \text{ sec/m}^3$ for the first and second quarters of the year, respectively.

Whole-body and skin doses were calculated at these off-site points as a result of noble gas releases occurring in both quarters. The methodology applied to the dose calculations is consistent with that of Regulatory Guide 1.109 (Reference 5) for an elevated release point. Dose conversion factors for noble gases and daughters were taken from Table B-1 of this Regulatory Guide. For the beta contribution to the skin dose, a semi-infinite cloud model was used. The whole-body gamma dose was evaluated using a finite cloud sector average model with Gaussian activity distribution in the vertical plane. The gamma radiation received at a point of interest from a differential volume of the cloud is calculated. The radiation is then integrated over the entire cloud, taking into account the geometry of the cloud, variation in concentration, attenuation by the interaction of photons with matter in the path between source and the receptor point, and scattering of radiation from material outside the direct path to the point of interest. An attenuation factor of 0.7 is also applied to the dose calculations to account for the dose reduction due to shielding which would be provided by a residential structure. No additional credit is taken for decay of radionuclides in transit to the receptor point.

For the first quarter, the skin and whole-body doses from exposure to noble gases at the point of maximum ground level air concentration were calculated to be $5.0\text{E}-02$ mrem and $2.3\text{E}-02$ mrem, respectively. For the noble gas effluents during the second quarter, the skin and whole-body doses at the point of maximum ground level air concentration were calculated to be $1.4\text{E}-02$ mrem and $5.0\text{E}-03$ mrem, respectively.

In addition, the maximum nearest resident and maximum site boundary whole-body and skin doses have been calculated due to noble gas effluents from the plant stack during the reporting period. The maximum site boundary whole-body and skin doses (both $7.8\text{E}-02$ mrem) for the first quarter of 1983 occurred in the S sector, 400 meters from the stack. The second quarter maximum site boundary whole-body and skin doses (both $1.2\text{E}-02$ mrem) also occurred in the S sector 400 meters from the stack. For the first quarter, the maximum nearest resident whole-body and skin doses (both approximately $4.0\text{E}-02$ mrem) in any direction were determined to be in the S sector, 550 meters from the plant stack. As a result of the second quarter meteorology

IMAGE EVALUATION
TEST TARGET (MT-3)



and noble gas effluents, the maximum nearest resident whole-body and skin doses (both approximately $6.0\text{E-}03$ mrem) in any sector also occurred in the S sector, 550 meters from the plant stack.

The resultant doses due to noble gas effluents for the maximum site boundary location, maximum nearest resident, and point of maximum ground level air concentration are tabulated in Table 7. All doses are conservative in that they assume 100 percent occupancy at each point. Whole-body doses consider the gamma radiation received from the effluent plume overhead. The skin doses consider both the beta and gamma contributions at the receptor point. All doses from noble gaseous effluents are well below the dose criteria of 10CFR50, Appendix I.

4.3 Organ Doses to Individuals from Radioactive Iodine and Particulates in Gaseous Effluents

The critical pathway of internal exposure to radioactive iodine and particulates, including tritium, resulting from gaseous effluents for the second quarter is through the grass-milk pathway. It is assumed that milk animals are free to graze on open pasture during the second quarter with no supplemental feeding. This assumption is conservative since most of the milk animals inventoried in the site vicinity are fed stored feed throughout the entire year with only limited grazing allowed during the growing season. It has also been assumed that only 50 percent of the iodine deposited from gaseous effluent is in elemental form (I_2) and is available for uptake. This assumption is conservative for long-term doses (see p. 26, Reference 5).

During the winter months of the year, the dose commitment through the milk pathway and fresh vegetable ingestion is insignificant. The maximum length of annual growing season is approximately six months long in this part of New England. Therefore, the milk pathway and vegetable ingestion doses for the first quarter are the result of activity deposited on feed and vegetables grown during the growing season and allowed to decay while held in storage. As a result, the critical pathway of exposure for radioactive iodine and particulates during the first quarter is through inhalation.

As a result of the milk and fresh vegetable pathways, the maximum dose for the second quarter from gaseous releases of radioactive iodine and particulates was determined to occur at a farm 3000 meters west-northwest of the plant. The critical organ was a child's thyroid with a calculated dose of approximately $9.5E-04$ mrem. For the first quarter, with inhalation being the principal pathway of exposure, the maximum organ dose was projected to also be at a farm 5600 meters south-southeast of the plant. The critical organs were the GI-LLI and whole body of a child, each with a calculated dose of $1.4E-03$ mrem. The pathways of exposure which were assumed to exist during the first quarter at this farm include ground plane exposure, inhalation, fresh home grown vegetables, meat, and cow's milk. The pathways of exposure considered at the maximum farm location during the second quarter include continuous ground plane exposure, inhalation and contributions from stored vegetables and milk.

Table 7 shows the maximum calculated quarterly organ dose due to the combination of exposures from all pathways which have been identified at the two farms. Table 7 also shows the calculated organ doses to the highest exposed nearby resident, and potential organ doses to individuals if assumed standing at the highest ground level air concentration point on the site boundary for the entire six-month reporting period. The site boundary doses include only exposure from inhalation, and direct radiation from the ground plane. The nearest resident is assumed to have a vegetable garden during the growing season which contributes to his or her ingestion dose. For all ground plane exposures, the activity is assumed to accumulate on the ground for 15 years at the rate equivalent to that observed during each quarter. This is a simplified method of approximating the average deposition over the life of the plant. The calculated dose from direct exposure to activity on the ground thus represents the dose an individual would see in each quarter if the plant had been operating 15 years. This approach is very conservative, but shows the relative impact the plant would have on the dose commitment over its operating life if the releases were to continue at the levels recorded during this reporting period.

The critical organ for the first quarter for the nearest resident with the most exposure was the GI-LLI of a child. The dose to this critical organ

was calculated to be $7.2\text{E-}04$ mrem (SSE, 2100 meters). The critical organs for the second quarter for the nearest resident with the most exposure were the GI-LLI and whole body of a child. The doses to these critical organs were calculated to be $2.7\text{E-}04$ mrem (SSE, 2100 meters).

The critical organ for the first quarter for the maximum site boundary location was the thyroid of both a child and a teen. The dose to this critical organ was calculated to be $6.7\text{E-}05$ mrem (SSE, 850 meters). The critical organs for the second quarter for the maximum site boundary location were the bone, thyroid, GI-LLI and whole body of an infant, child, teen and adult. The doses to these critical organs were calculated to be $1.3\text{E-}04$ mrem (SSE, 850 meters).

4.4 Whole-Body Doses in Unrestricted Areas from Direct Radiation

The major source of direct radiation (including sky shine) from the station is due to N-16 decay in the turbine building. Because of the orientation of the turbine building on the site, and the shielding effects of the adjacent reactor building, only the seven westerly sectors (SSW to NNW) see any significant direct radiation.

High pressure ionization chamber (HPIC) measurements have been made in the plant area in order to estimate the direct radiation from the station. The chamber was located at a point along the west site boundary which has been determined to receive the maximum direct radiation from the plant. Using measurements of dose rate made while the plant operated at different power levels, from shutdown to 100 percent, the total integrated dose from direct radiation over each three month period was determined by considering the quarterly gross megawatts generated. Field measurements of exposure, in units of Roentgen, were modified by multiplying by 0.6 to obtain whole-body dose equivalents, in units of rem, in accordance with recommendations of HASL report 305 (Reference 6) for radiation fields resulting from N-16 photons.

Estimates of the population exposure from direct radiation during the first and second quarters have been made out to two miles. Beyond two miles, the dose from the turbine building is negligible. As a result, the estimated

population dose for each of the two quarters respectively was approximately $1.4\text{E}-02$ and $1.7\text{E}-03$ person-rem, for a total population of about 402 persons. The estimated direct radiation dose at the maximum site boundary location was approximately $2.2\text{E}+00$ mrem for the first quarter of 1983, and $3.0\text{E}-01$ mrem for the second. These site boundary doses assume a 100 percent occupancy factor, taking no credit for the shielding effect of any structure. Table 7 summarizes these results.

4.5 Whole-Body Doses to the General Population from all Receiving Water Related Pathways

There were no routine or accidental liquid releases from Vermont Yankee during the first half of 1983.

4.6 Doses to the General Population and Average Individual Within Fifty Miles from Gaseous Effluents

Using site meteorological data in Tables 4 and 5, quarterly average X/Q values were determined for each sector formed by placing radial rings from the plant at distances of one, two, three, four, five, ten, twenty, thirty, forty and fifty miles, and their intersection with radial lines drawn to form each of the sixteen principal compass directions. For noble gases, whole-body and skin doses were calculated for each sector and multiplied by the estimated population within each sector to determine the sector person-rem. No credit for decay in transit of activity was assumed.

For the approximately $1.53\text{E}+06$ people within fifty miles of the plant, the first and second quarter whole-body doses from noble gas cloud exposure were estimated to be $6.1\text{E}-01$ person-rem and $1.3\text{E}-01$ person-rem, respectively. For the same two quarters, the average individual whole-body doses were $4.0\text{E}-04$ mrem and $8.5\text{E}-05$ mrem, respectively. The skin doses for the two quarters were $1.4\text{E}+00$ person-rem and $3.2\text{E}-01$ person-rem, respectively. The average individual skin dose was $9.2\text{E}-04$ and $2.1\text{E}-04$ mrem for the third and fourth quarters.

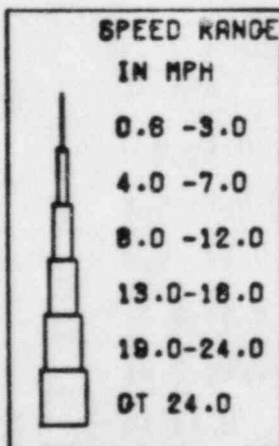
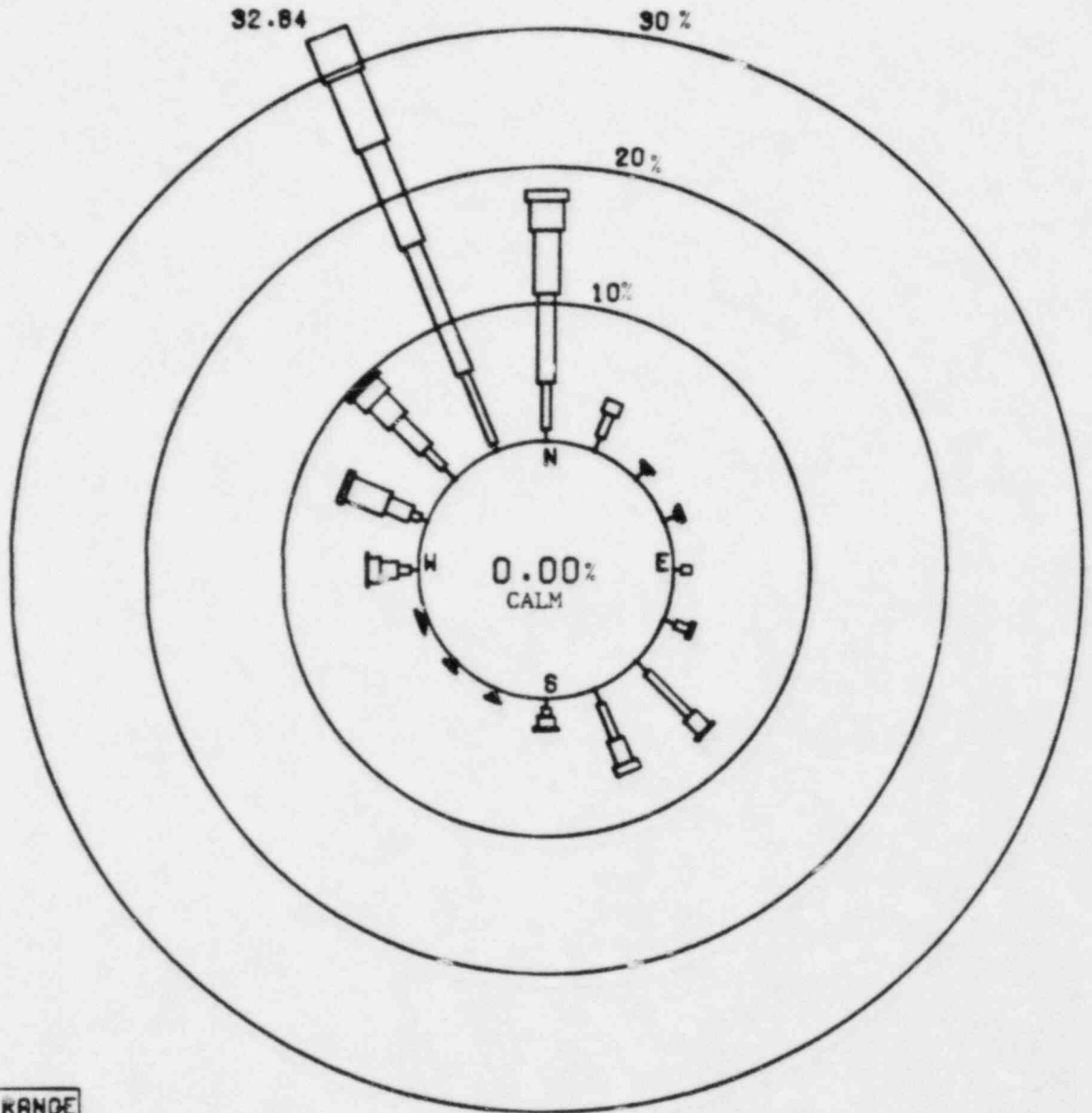
Table 7 also indicates the population whole-body and thyroid dose commitments from radioactive iodine and particulates (including tritium) released from the plant in gaseous waste. The pathways of exposure which have been considered for the 50 mile population include inhalation, ingestion of vegetables, milk and meat produced within 50 miles, and the direct exposure to activity deposited on the ground plane. The dose due to iodines in ingested food is based on the assumption that only 50 percent of the iodines is elemental and available for uptake. The total whole-body and thyroid dose commitments for the first quarter were both calculated to be $1.7\text{E}-02$ person-rem. For the second quarter, these doses were both $1.8\text{E}-02$ person-rem.

REFERENCES

1. Regulatory Guide 1.111, "Methods for Estimating Atmospheric Transport and Dispersion of Gaseous Effluents in Routine Releases from Light-Water-Cooled Reactors", U.S. Nuclear Regulatory Commission, Office of Standards Development, March 1976.
2. Meteorology and Atomic Energy, 1968, Section 5-3.2.2, "Cloud Depletion", pg. 204. U. S. Atomic Energy Commission, July 1968.
3. C. A. Pelletier, and J. D. Zimbrick, "Kinetics of Environmental Radioiodine Transport Through the Milk-Food Chain", Environmental Surveillance in the Vicinity of Nuclear Facilities, Charles D. Thomas Publishers, Springfield, Illinois, 1970.
4. "Supplemental Information for the Purposes of Evaluation of 10CFR Part 50, Appendix I", Vermont Yankee Nuclear Power Corporation, June 2, 1976.
5. Regulatory Guide 1.109, "Calculation of Annual Doses to Man From Routine Release of Reactor Effluents for the Purpose of Evaluating Compliance with 10CFR Part 50, Appendix I", U. S. Nuclear Regulatory Commission, Office of Standards Development, Revision 1, October 1977.
6. W. M. Lowder, P. D. Raft, and G. dePlanque Burke, "Determination of N-16 Gamma Radiation Fields at BWR Nuclear Power Stations", Health and Safety Laboratory, Energy Research and Development Administration, Report No. 305, May 1976.
7. NUREG-0473, "Radiological Effluent Technical Specifications for BWR's", Revision 2, July 1981; Table 4.11-1, Notation f.

FIGURE 1A

VERMONT YANKEE JANUARY-MARCH, 1983
UPPER LEVEL WIND ROSE



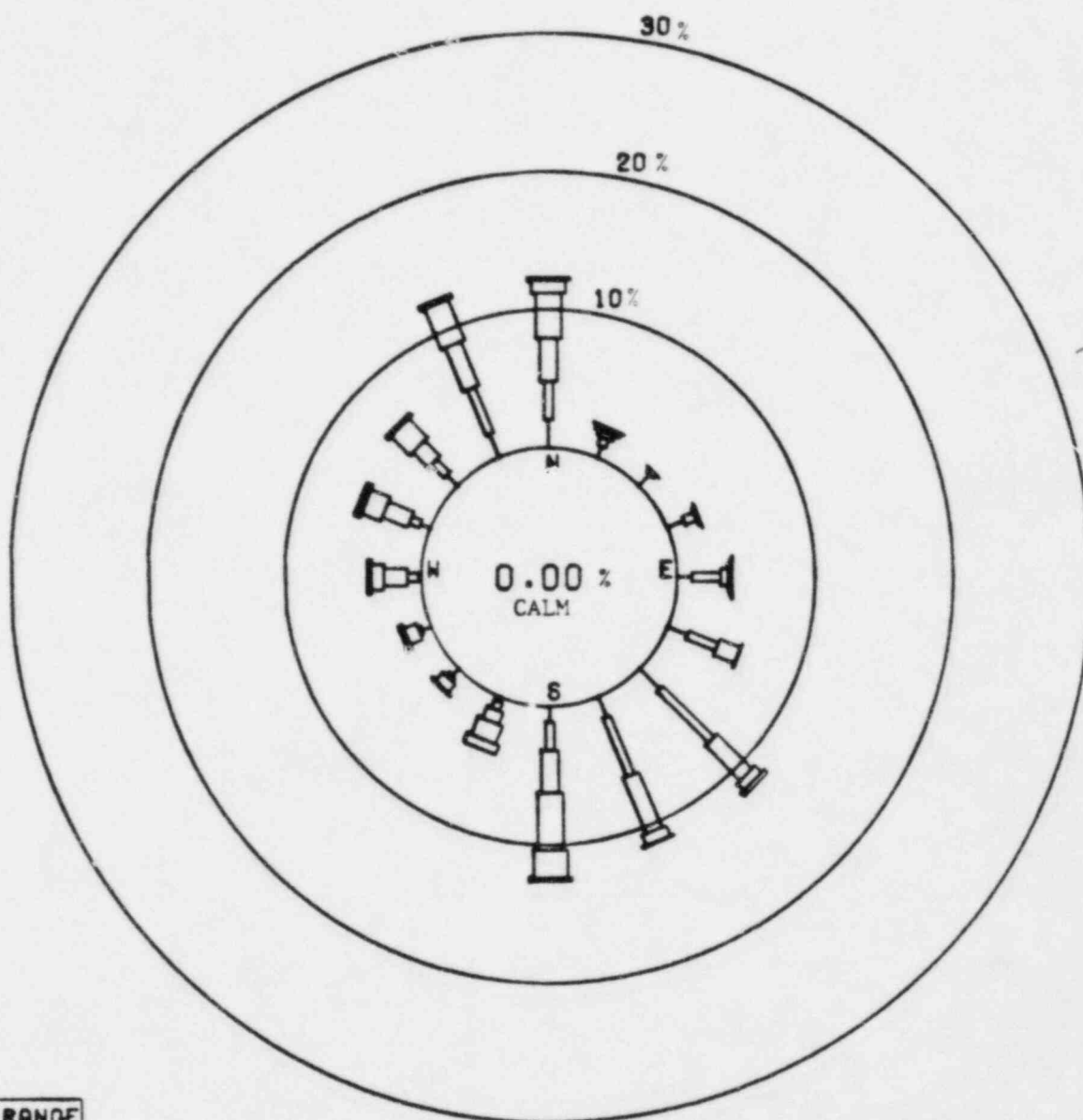
STABILITY CLASS ALL

SENSOR LEVELS

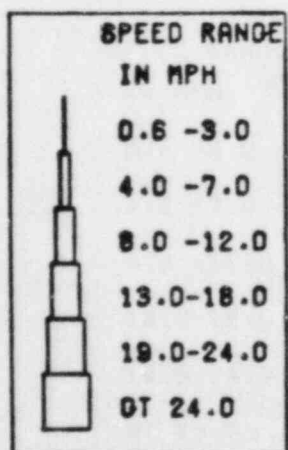
WIND SPEED = UPPER
DIRECTION = UPPER
DELTA TEMP = UPPER
MISSING HOURS = 951

FIGURE 1B

VERMONT YANKEE APRIL-JUNE, 1983
UPPER LEVEL WIND ROSE



STABILITY CLASS ALL



SENSOR LEVELS

WIND SPEED = UPPER
DIRECTION = UPPER
DELTA TEMP = UPPER
MISSING HOURS = 676

TABLE 1A
VERMONT YANKEE
EFFLUENT AND WASTE DISPOSAL SEMI-ANNUAL REPORT
JANUARY - JUNE 1983
GASEOUS EFFLUENTS - SUMMATION OF ALL RELEASES

	Unit	Quarter 1	Quarter 2	Est. Total Error
A. Fission and activation gases				
1. Total release	Ci	<8.12E+2	<7.78E+2	*100
2. Average release rate for period	μCi/sec	<1.03E+2	<9.89E+1	
3. Percent of technical specification limit		<9.80E-2	<1.55E-2	
B. Iodines				
1. Total Iodine-131	Ci	5.18E-5	2.46E-5	*50
2. Average release rate for period	μCi/sec	6.59E-6	3.13E-6	
3. Percent of technical specification limit		1.37E-3	6.53E-4	
C. Particulates				
1. Particulates with half-lives > 8 days	Ci	8.38E-4	1.46E-3	*50
2. Average release rate for period	μCi/sec	1.07E-4	1.85E-4	
3. Percent of technical specification limit		1.86E-2	3.23E-2	
4. Gross alpha radioactivity	Ci	1.14E-7	*	

* Gross alpha radioactivity data for the second quarter was not available in time for inclusion in this report.

TABLE 1A (CONTINUED)

VERMONT YANKEE

EFFLUENT AND WASTE DISPOSAL SEMIANNUAL REPORT

JANUARY - JUNE 1983

GASEOUS EFFLUENTS - SUMMATION OF ALL RELEASES

	Unit	Quarter 1	Quarter 2	Est. Total Error
D. Tritium				
1. Total release	CI	5.43E+0	1.43E+0	*50
2. Average release rate for period	uCi/sec	6.91E-1	1.81E-1	
3. Percent of technical specification limit		N.A.	N.A.	

VERMONT YANKEE

EFFLUENT AND WASTE DISPOSAL SEMIANNUAL REPORT

JANUARY - JUNE 1983

GASEOUS EFFLUENTS - ELEVATED RELEASE

		CONTINUOUS MODE		BATCH MODE *1	
Nuclides Released	Unit	Quarter 1	Quarter 2	Quarter	Quarter
1. Fission gases					
Krypton-85	CI	**	**		
Krypton-85m	CI	<1.56E+0	<2.02E-1		
Krypton-87	CI	<1.11E+1	<1.86E+0		
Krypton-88	CI	<7.42E+0	<1.21E+0		
Xenon-133	CI	<2.53E+2	<6.91E+2		
Xenon-135	CI	<1.42E+1	<1.99E+0		
Xenon-135m	CI	<1.02E+2	<1.54E+1		
Xenon-138	CI	<4.23E+2	<6.55E+1		
Total for period	CI	<8.12E+2	<7.78E+2		
2. Iodines					
Iodine-131	CI	5.18E-5	2.46E-5		
Iodine-133	CI	1.64E-4	<2.70E-4		
Iodine-135	CI	2.92E-3	7.07E-4		
Total for period	CI	3.14E-3	7.32E-4		

VERMONT YANKEE

EFFLUENT AND WASTE DISPOSAL SEMI-ANNUAL REPORT

JANUARY - JUNE 1983

GASEOUS EFFLUENTS - ELEVATED RELEASE

CONTINUOUS MODE

BATCH MODE *

Nuclides Released	Unit	Quarter 1	Quarter 2	Quarter	Quarter
3. Particulates					
Strontium-89	CI	2.38E-5	***		
Strontium-90	CI	2.75E-7	***		
Cesium-134	CI	3.29E-5	<8.22E-5		
Cesium-137	CI	2.09E-5	1.19E-4		
Barium-lanthanum-140	CI	<3.00E-4	<3.00E-4		
Cobalt-58	CI	<6.59E-5	1.78E-5		
Cobalt-60	CI	7.39E-4	1.14E-3		
Zinc-65	CI	2.69E-6	1.14E-4		
Manganese-54	CI	4.20E-5	6.68E-5		

* - No batch mode releases for this reporting period.

** - Not detected in the off-gas mix. Limit of detectability = $6.79\text{E-}7 \mu\text{Ci/cc}$.

*** - Strontium-89 and Strontium-90 data for the second quarter was not available in time for inclusion in this report. For dose calculation purposes the Strontium-89 and Strontium-90 data for the second quarter was assumed to be the same as the first quarter.

TABLE 1C
VERMONT YANKEE
EFFLUENT AND WASTE DISPOSAL SEMIANNUAL REPORT
JANUARY - JUNE 1983
GASEOUS EFFLUENTS - GROUND LEVEL RELEASES

There were no routine measured ground level continuous or batch mode gaseous releases during this reporting period.

TABLE 1D
VERMONT YANKEE
EFFLUENT AND WASTE DISPOSAL SEMIANNUAL REPORT
JANUARY - JUNE 1983
GASEOUS EFFLUENTS - NONROUTINE RELEASES

There were no nonroutine or accidental gaseous effluent releases during this reporting period.

TABLE 2A
VERMONT YANKEE
EFFLUENT AND WASTE DISPOSAL SEMIANNUAL REPORT
JANUARY - JUNE 1983
LIQUID EFFLUENTS - SUMMATION OF ALL RELEASES

There were no liquid effluent releases during this reporting period.

TABLE 2B
VERMONT YANKEE
EFFLUENT AND WASTE DISPOSAL SEMIANNUAL REPORT
JANUARY- JUNE 1983
LIQUID EFFLUENTS

There were no liquid effluent releases during this reporting period.

TABLE 3
VERMONT YANKEE
EFFLUENT AND WASTE DISPOSAL SEMIANNUAL REPORT
JANUARY - JUNE 1983
SOLID WASTE AND IRRADIATED FUEL SHIPMENTS

A. SOLID WASTE SHIPPED OFF-SITE FOR BURIAL OR DISPOSAL (Not irradiated fuel)

1. Type of waste	Unit	6-Month Period	Est. Total Error,
a. Spent resins, filter sludges, etc.	m ³ Ci	7.19E+1 3.24E+2	*75
b. Dry compressible waste, contaminated equipment, etc.	m ³ Ci	1.96E+2 3.11E+0	*75
c. Irradiated components, control rods, etc.	m ³ Ci	0 0	
d. Other (describe)	m ³ Ci	0 0	

2. Estimate of major nuclide composition (by type of waste)

a. Spent resins, filter sludges, etc.	percent	Cesium-134	8.0E-1
	percent	Cesium-137	7.5E+0
	percent	Zinc-65	1.98E+1
	percent	Cobalt-60	4.05E+1
	percent	Iron-59	1.3E+0
	percent	Zirconium-95	8.2E+0
	percent	Niobium-95	9.3E+0
	percent	Cobalt-58	3.5E+0
	percent	Manganese-54	8.3E+0
	percent	Manganese-56	7.0E-1
	percent	Chlorine-38	5.0E-3
	percent	Antimony-124	9.4E-2

TABLE 3 (continued)
VERMONT YANKEE
EFFLUENT AND WASTE DISPOSAL SEMI-ANNUAL REPORT
JANUARY - JUNE 1983
SOLID WASTE AND IRRADIATED FUEL SHIPMENTS

b. Dry compressible waste, contaminated equipment, etc.	percent	Cesium-134	2.31E+1
	percent	Cesium-137	4.08E+1
	percent	Cobalt-60	2.43E+1
	percent	Cobalt-58	9.8E-1
	percent	Manganese-54	2.4E+0
	percent	Zinc-65	8.3E+0

3. Solid Waste Disposition

<u>Number of Shipments</u>	<u>Mode of Transportation</u>	<u>Destination</u>
7	Truck	Barnwell, South Carolina
8	Truck	Beatty, Nevada
6	Truck	Richland, Washington

B. IRRADIATED FUEL SHIPMENTS (Disposition)

<u>Number of Shipments</u>	<u>Mode of Transportation</u>	<u>Destination</u>
0	N/A*	N/A*

* N/A = Not applicable.

TABLE 4A

VERMONT YANKEE JAN-MAR 1963 JOINT FREQUENCY DISTRIBUTION (UPPER LEVEL)

297.0 FT WIND DATA

STABILITY CLASS A

CLASS FREQUENCY (PERCENT) = .08

WIND DIRECTION FROM

SPEED (MPH)	N	NNE	NE	ENE	E	ESE	SE	SSE	S	SSW	SW	WSW	W	WNW	NW	NNW	VRBL	TOTAL
CALM	0	0	0	0	0	0	0	0	0	0	0	0	0	0	0	0	0	0
(1)	0.00	0.00	0.00	0.00	0.00	0.00	0.00	0.00	0.00	0.00	0.00	0.00	0.00	0.00	0.00	0.00	0.00	0.00
(2)	0.00	0.00	0.00	0.00	0.00	0.00	0.00	0.00	0.00	0.00	0.00	0.00	0.00	0.00	0.00	0.00	0.00	0.00
C-3	0	0	0	0	0	0	0	0	0	0	0	0	0	0	0	0	0	0
(1)	0.00	0.00	0.00	0.00	0.00	0.00	0.00	0.00	0.00	0.00	0.00	0.00	0.00	0.00	0.00	0.00	0.00	0.00
(2)	0.00	0.00	0.00	0.00	0.00	0.00	0.00	0.00	0.00	0.00	0.00	0.00	0.00	0.00	0.00	0.00	0.00	0.00
4-7	0	0	0	0	0	0	0	0	0	0	0	0	0	0	0	0	0	0
(1)	0.00	0.00	0.00	0.00	0.00	0.00	0.00	0.00	0.00	0.00	0.00	0.00	0.00	0.00	0.00	0.00	0.00	0.00
(2)	0.00	0.00	0.00	0.00	0.00	0.00	0.00	0.00	0.00	0.00	0.00	0.00	0.00	0.00	0.00	0.00	0.00	0.00
8-12	0	0	0	0	0	0	0	0	0	0	0	0	0	0	0	0	0	0
(1)	0.00	0.00	0.00	0.00	0.00	0.00	0.00	0.00	0.00	0.00	0.00	0.00	0.00	0.00	0.00	0.00	0.00	0.00
(2)	0.00	0.00	0.00	0.00	0.00	0.00	0.00	0.00	0.00	0.00	0.00	0.00	0.00	0.00	0.00	0.00	0.00	0.00
13-16	0	0	0	0	0	0	0	0	0	0	0	0	0	0	0	0	0	0
(1)	0.00	0.00	0.00	0.00	0.00	0.00	0.00	0.00	0.00	0.00	0.00	0.00	0.00	0.00	0.00	0.00	0.00	0.00
(2)	0.00	0.00	0.00	0.00	0.00	0.00	0.00	0.00	0.00	0.00	0.00	0.00	0.00	0.00	0.00	0.00	0.00	0.00
19-24	0	0	0	0	0	0	0	0	0	0	0	0	0	0	0	0	0	0
(1)	0.00	0.00	0.00	0.00	0.00	0.00	0.00	0.00	0.00	0.00	0.00	0.00	0.00	0.00	0.00	0.00	0.00	0.00
(2)	0.00	0.00	0.00	0.00	0.00	0.00	0.00	0.00	0.00	0.00	0.00	0.00	0.00	0.00	0.00	0.00	0.00	0.00
GT 24	1	0	0	0	0	0	0	0	0	0	0	0	0	0	0	0	0	1
(1)	100.00	0.00	0.00	0.00	0.00	0.00	0.00	0.00	0.00	0.00	0.00	0.00	0.00	0.00	0.00	0.00	0.00	100.00
(2)	.08	0.00	0.00	0.00	0.00	0.00	0.00	0.00	0.00	0.00	0.00	0.00	0.00	0.00	0.00	0.00	0.00	.08
ALL SPEEDS	1	0	0	0	0	0	0	0	0	0	0	0	0	0	0	0	0	1
(1)	100.00	0.00	0.00	0.00	0.00	0.00	0.00	0.00	0.00	0.00	0.00	0.00	0.00	0.00	0.00	0.00	0.00	100.00
(2)	.08	0.00	0.00	0.00	0.00	0.00	0.00	0.00	0.00	0.00	0.00	0.00	0.00	0.00	0.00	0.00	0.00	.08

(1)=PERCENT OF ALL GOOD OBSERVATIONS FOR THIS PAGE

(2)=PERCENT OF ALL GOOD OBSERVATIONS FOR THIS PERIOD

C= CALM (WIND SPEED LESS THAN OR EQUAL TO .60 MPH)

TABLE 4B

VERMONT YANKEE JAN-MAR 1983 JOINT FREQUENCY DISTRIBUTION (UPPER LEVEL)

297.0 FT WIND DATA

STABILITY CLASS B

CLASS FREQUENCY (PERCENT) = .91

WIND DIRECTION FROM

SPEED(MPH)	N	NNE	NE	ENE	E	ESE	SE	SSE	S	SSW	SW	WSW	W	WNW	NNW	VRBL	TOTAL
CALM	0	0	0	0	0	0	0	0	0	0	0	0	0	0	0	0	0
(1)	0.00	0.00	0.00	0.00	0.00	0.00	0.00	0.00	0.00	0.00	0.00	0.00	0.00	0.00	0.00	0.00	0.00
(2)	0.00	0.00	0.00	0.00	0.00	0.00	0.00	0.00	0.00	0.00	0.00	0.00	0.00	0.00	0.00	0.00	0.00
2-3	1	0	0	1	0	0	0	0	0	0	0	0	0	0	0	0	2
(1)	9.09	0.00	0.00	9.09	0.00	0.00	0.00	0.00	0.00	0.00	0.00	0.00	0.00	0.00	0.00	0.00	18.18
(2)	.08	0.00	0.00	.08	0.00	0.00	0.00	0.00	0.00	0.00	0.00	0.00	0.00	0.00	0.00	0.00	.17
4-7	0	0	0	0	0	0	0	0	0	0	0	0	0	0	2	1	3
(1)	0.00	0.00	0.00	0.00	0.00	0.00	0.00	0.00	0.00	0.00	0.00	0.00	0.00	0.00	18.18	9.09	27.27
(2)	0.00	0.00	0.00	0.00	0.00	0.00	0.00	0.00	0.00	0.00	0.00	0.00	0.00	0.00	.17	.08	.25
8-12	0	0	0	0	0	0	0	0	0	0	0	0	0	0	1	1	2
(1)	0.00	0.00	0.00	0.00	0.00	0.00	0.00	0.00	0.00	0.00	0.00	0.00	0.00	0.00	9.09	9.09	18.18
(2)	0.00	0.00	0.00	0.00	0.00	0.00	0.00	0.00	0.00	0.00	0.00	0.00	0.00	0.00	.08	.08	.17
13-18	0	0	0	0	0	0	0	0	0	0	0	0	0	2	1	0	3
(1)	0.00	0.00	0.00	0.00	0.00	0.00	0.00	0.00	0.00	0.00	0.00	0.00	0.00	18.18	9.09	0.00	27.27
(2)	0.00	0.00	0.00	0.00	0.00	0.00	0.00	0.00	0.00	0.00	0.00	0.00	0.00	.17	.08	0.00	.25
19-24	0	0	0	0	0	0	0	0	0	0	0	0	0	1	0	0	1
(1)	0.00	0.00	0.00	0.00	0.00	0.00	0.00	0.00	0.00	0.00	0.00	0.00	0.00	9.09	0.00	0.00	9.09
(2)	0.00	0.00	0.00	0.00	0.00	0.00	0.00	0.00	0.00	0.00	0.00	0.00	0.00	.08	0.00	0.00	.08
GT 24	0	0	0	0	0	0	0	0	0	0	0	0	0	0	0	0	0
(1)	0.00	0.00	0.00	0.00	0.00	0.00	0.00	0.00	0.00	0.00	0.00	0.00	0.00	0.00	0.00	0.00	0.00
(2)	0.00	0.00	0.00	0.00	0.00	0.00	0.00	0.00	0.00	0.00	0.00	0.00	0.00	0.00	0.00	0.00	0.00
ALL SPEEDS	1	0	0	1	0	0	0	0	0	0	0	0	0	3	4	2	11
(1)	9.09	0.00	0.00	9.09	0.00	0.00	0.00	0.00	0.00	0.00	0.00	0.00	0.00	27.27	36.36	18.18	100.00
(2)	.08	0.00	0.00	.08	0.00	0.00	0.00	0.00	0.00	0.00	0.00	0.00	0.00	.25	.33	.17	.91

(1)=PERCENT OF ALL GOOD OBSERVATIONS FOR THIS PAGE

(2)=PERCENT OF ALL GOOD OBSERVATIONS FOR THIS PERIOD

C= CALM (WIND SPEED LESS THAN OR EQUAL TO .60 MPH)

TABLE 4C

VERMONT YANKEE JAN-MAR 1983 JOINT FREQUENCY DISTRIBUTION (UPPER LEVEL)

297.0 FT WIND DATA

STABILITY CLASS C

CLASS FREQUENCY (PERCENT) = 2.73

WIND DIRECTION FROM

SPEED (MPH)	N	NNE	NE	ENE	E	ESE	SE	SSE	S	SSW	SW	WSW	W	WNW	WW	WNW	VRBL	TOTAL
CALM	0	0	0	0	0	0	0	0	0	0	0	0	0	0	0	0	0	0
(1)	0.00	0.00	0.00	0.00	0.00	0.00	0.00	0.00	0.00	0.00	0.00	0.00	0.00	0.00	0.00	0.00	0.00	0.00
(2)	0.00	0.00	0.00	0.00	0.00	0.00	0.00	0.00	0.00	0.00	0.00	0.00	0.00	0.00	0.00	0.00	0.00	0.00
C-3	0	0	0	0	0	1	0	1	0	0	1	0	0	0	1	0	0	4
(1)	0.00	0.00	0.00	0.00	0.00	3.03	0.00	3.03	0.00	0.00	3.03	0.00	0.00	0.00	3.03	0.00	0.00	12.12
(2)	0.00	0.00	0.00	0.00	0.00	.08	0.00	.08	0.00	0.00	.08	0.00	0.00	0.00	.08	0.00	0.00	.33
4-7	0	0	0	0	0	0	1	0	0	0	0	0	0	0	3	0	0	4
(1)	0.00	0.00	0.00	0.00	0.00	0.00	3.03	0.00	0.00	0.00	0.00	0.00	0.00	0.00	9.09	0.00	0.00	12.12
(2)	0.00	0.00	0.00	0.00	0.00	0.00	.08	0.00	0.00	0.00	0.00	0.00	0.00	0.00	.25	0.00	0.00	.33
8-12	1	0	0	0	0	0	1	1	0	0	0	0	0	0	0	5	0	8
(1)	3.03	0.00	0.00	0.00	0.00	0.00	3.03	3.03	0.00	0.00	0.00	0.00	0.00	0.00	0.00	15.15	0.00	24.24
(2)	.08	0.00	0.00	0.00	0.00	0.00	.08	.08	0.00	0.00	0.00	0.00	0.00	0.00	0.00	.41	0.00	.66
13-18	0	0	0	0	0	0	0	0	1	0	0	0	0	0	1	3	0	5
(1)	0.00	0.00	0.00	0.00	0.00	0.00	0.00	0.00	3.03	0.00	0.00	0.00	0.00	0.00	3.03	9.09	0.00	15.15
(2)	0.00	0.00	0.00	0.00	0.00	0.00	0.00	0.00	.08	0.00	0.00	0.00	0.00	0.00	.08	.25	0.00	.41
19-24	0	0	0	0	0	0	0	0	0	0	0	0	0	1	1	4	0	6
(1)	0.00	0.00	0.00	0.00	0.00	0.00	0.00	0.00	0.00	0.00	0.00	0.00	0.00	3.03	3.03	12.12	0.00	18.18
(2)	0.00	0.00	0.00	0.00	0.00	0.00	0.00	0.00	0.00	0.00	0.00	0.00	0.00	.08	.08	.33	0.00	.50
BT 24	1	0	0	0	0	0	0	0	0	0	0	0	0	0	1	4	0	6
(1)	3.03	0.00	0.00	0.00	0.00	0.00	0.00	0.00	0.00	0.00	0.00	0.00	0.00	0.00	3.03	12.12	0.00	18.18
(2)	.08	0.00	0.00	0.00	0.00	0.00	0.00	0.00	0.00	0.00	0.00	0.00	0.00	0.00	.08	.33	0.00	.50
ALL SPEEDS	2	0	0	0	0	1	2	2	1	0	1	0	0	1	7	16	0	33
(1)	6.06	0.00	0.00	0.00	0.00	3.03	6.06	6.06	3.03	0.00	3.03	0.00	0.00	3.03	21.21	48.48	0.00	100.00
(2)	.17	0.00	0.00	0.00	0.00	.08	.17	.17	.08	0.00	.08	0.00	0.00	.08	.38	1.32	0.00	2.73

(1)=PERCENT OF ALL GOOD OBSERVATIONS FOR THIS PAGE

(2)=PERCENT OF ALL GOOD OBSERVATIONS FOR THIS PERIOD

C= CALM (WIND SPEED LESS THAN OR EQUAL TO .60 MPH)

TABLE 4D

VERMONT YANKEE JAN-MAR 1983 JOINT FREQUENCY DISTRIBUTION (UPPER LEVEL)

297.0 FT WIND DATA

STABILITY CLASS D

CLASS FREQUENCY (PERCENT) = 43.26

WIND DIRECTION FROM

SPEED (MPH)	N	NNE	NE	ENE	E	ESE	SE	SSE	S	SSW	SW	WSW	W	WNW	WW	WNW	VRBL	TOTAL
CALM	0	0	0	0	0	0	0	0	0	0	0	0	0	0	0	0	0	0
(1)	0.00	0.00	0.00	0.00	0.00	0.00	0.00	0.00	0.00	0.00	0.00	0.00	0.00	0.00	0.00	0.00	0.00	0.00
(2)	0.00	0.00	0.00	0.00	0.00	0.00	0.00	0.00	0.00	0.00	0.00	0.00	0.00	0.00	0.00	0.00	0.00	0.00
C-3	3	2	1	1	1	2	3	2	1	1	0	1	1	3	1	0	0	23
(1)	.57	.38	.19	.19	.19	.38	.57	.38	.19	.19	0.00	.19	.19	.57	.19	0.00	0.00	4.40
(2)	.25	.17	.08	.08	.08	.17	.25	.17	.08	.08	0.00	.08	.08	.25	.08	0.00	0.00	1.90
4-7	10	8	2	1	4	3	10	10	2	0	2	0	2	3	7	11	0	75
(1)	1.91	1.53	.38	.19	.76	.57	1.91	1.91	.38	0.00	.38	0.00	.38	.57	1.34	2.10	0.00	14.34
(2)	.83	.66	.17	.08	.33	.25	.83	.83	.17	0.00	.17	0.00	.17	.25	.58	.91	0.00	6.20
8-12	35	12	2	3	0	4	10	15	7	0	0	0	7	17	18	41	0	171
(1)	6.69	2.29	.38	.57	0.00	.76	1.91	2.87	1.34	0.00	0.00	0.00	1.34	3.25	3.44	7.84	0.00	32.70
(2)	2.89	.99	.17	.25	0.00	.33	.83	1.24	.56	0.00	0.00	0.00	.58	1.41	1.49	3.39	0.00	14.14
13-18	20	0	0	0	0	0	2	7	1	0	0	0	9	29	19	44	0	131
(1)	3.82	0.00	0.00	0.00	0.00	0.00	.38	1.34	.19	0.00	0.00	0.00	1.72	5.54	3.63	8.41	0.00	25.05
(2)	1.65	0.00	0.00	0.00	0.00	0.00	.17	.58	.08	0.00	0.00	0.00	.74	2.40	1.57	3.64	0.00	10.84
19-24	22	0	0	0	0	0	0	0	0	0	0	0	1	3	15	47	0	88
(1)	4.21	0.00	0.00	0.00	0.00	0.00	0.00	0.00	0.00	0.00	0.00	0.00	.19	.57	2.87	8.99	0.00	16.83
(2)	1.82	0.00	0.00	0.00	0.00	0.00	0.00	0.00	0.00	0.00	0.00	0.00	.08	.25	1.24	3.89	0.00	7.28
BT 24	7	0	0	0	0	0	0	0	0	0	0	0	0	0	2	26	0	35
(1)	1.34	0.00	0.00	0.00	0.00	0.00	0.00	0.00	0.00	0.00	0.00	0.00	0.00	0.00	.38	4.97	0.00	6.69
(2)	.58	0.00	0.00	0.00	0.00	0.00	0.00	0.00	0.00	0.00	0.00	0.00	0.00	0.00	.17	2.15	0.00	2.89
ALL SPEEDS	97	22	5	5	5	9	25	34	11	1	2	1	20	55	62	169	0	523
(1)	18.55	4.21	.96	.96	.96	1.72	4.78	6.50	2.10	.19	.38	.19	3.82	10.52	11.85	32.31	0.00	100.00
(2)	8.02	1.82	.41	.41	.41	.74	2.07	2.81	.91	.08	.17	.08	1.65	4.35	5.13	13.98	0.00	43.26

(1)=PERCENT OF ALL GOOD OBSERVATIONS FOR THIS PAGE

(2)=PERCENT OF ALL GOOD OBSERVATIONS FOR THIS PERIOD

C= CALM (WIND SPEED LESS THAN OR EQUAL TO .60 MPH)

TABLE 4E

VERMONT YANKEE JAN-MAR 1983 JOINT FREQUENCY DISTRIBUTION (UPPER LEVEL)

297.0 FT WIND DATA

STABILITY CLASS E

CLASS FREQUENCY (PERCENT) = 37.14

WIND DIRECTION FROM

SPEED (MPH)	N	NNE	NE	ENE	E	ESE	SE	SSE	S	SSW	SW	WSW	W	WNW	NW	NNW	VRBL	TOTAL
CALM	0	0	0	0	0	0	0	0	0	0	0	0	0	0	0	0	0	0
(1)	0.00	0.00	0.00	0.00	0.00	0.00	0.00	0.00	0.00	0.00	0.00	0.00	0.00	0.00	0.00	0.00	0.00	0.00
(2)	0.00	0.00	0.00	0.00	0.00	0.00	0.00	0.00	0.00	0.00	0.00	0.00	0.00	0.00	0.00	0.00	0.00	0.00
C-3	5	6	2	4	4	5	7	7	6	2	1	2	5	4	7	4	0	71
(1)	1.11	1.34	.45	.89	.89	1.11	1.56	1.56	1.34	.45	.22	.45	1.11	.89	1.56	.89	0.00	15.81
(2)	.41	.50	.17	.33	.33	.41	.58	.58	.50	.17	.08	.17	.41	.33	.58	.33	0.00	5.87
4-7	15	8	0	1	1	5	2	15	2	3	1	1	3	4	6	32	0	123
(1)	3.34	1.78	0.00	.22	.22	1.11	5.79	3.34	.45	.67	.22	.22	.67	.89	1.34	7.13	0.00	27.39
(2)	1.24	.66	0.00	.08	.08	.41	2.15	1.24	.17	.25	.08	.08	.25	.33	.50	2.65	0.00	16.17
8-12	33	0	0	1	0	0	5	5	2	1	1	2	6	6	14	59	0	135
(1)	7.35	0.00	0.00	.22	0.00	0.00	1.11	1.11	.45	.22	.22	.45	1.34	1.34	3.12	13.14	0.00	30.07
(2)	2.73	0.00	0.00	.08	0.00	0.00	.41	.41	.17	.08	.08	.17	.50	.50	1.16	4.88	0.00	11.17
13-18	35	0	0	0	0	0	0	1	0	0	0	1	2	6	4	42	0	91
(1)	7.80	0.00	0.00	0.00	0.00	0.00	0.00	.22	0.00	0.00	0.00	.22	.45	1.34	.89	9.35	0.00	20.27
(2)	2.89	0.00	0.00	0.00	0.00	0.00	0.00	.08	0.00	0.00	0.00	.08	.17	.50	.33	3.47	0.00	7.53
19-24	4	0	0	0	0	0	0	0	0	0	0	0	0	0	0	15	0	19
(1)	.89	0.00	0.00	0.00	0.00	0.00	0.00	0.00	0.00	0.00	0.00	0.00	0.00	0.00	0.00	3.34	0.00	4.23
(2)	.33	0.00	0.00	0.00	0.00	0.00	0.00	0.00	0.00	0.00	0.00	0.00	0.00	0.00	0.00	1.24	0.00	1.57
BT 24	0	0	0	0	0	0	0	0	0	0	0	0	0	0	0	10	0	10
(1)	0.00	0.00	0.00	0.00	0.00	0.00	0.00	0.00	0.00	0.00	0.00	0.00	0.00	0.00	0.00	2.23	0.00	2.23
(2)	0.00	0.00	0.00	0.00	0.00	0.00	0.00	0.00	0.00	0.00	0.00	0.00	0.00	0.00	0.00	.83	0.00	.83
ALL SPEEDS	92	14	2	6	5	10	38	28	10	6	3	6	16	20	31	162	0	449
(1)	20.49	3.12	.45	1.34	1.11	2.23	8.46	6.24	2.23	1.34	.67	1.34	3.56	4.45	6.90	36.08	0.00	100.00
(2)	7.61	1.16	.17	.50	.41	.83	3.14	2.32	.83	.50	.25	.50	1.32	1.65	2.56	13.40	0.00	37.14

(1)=PERCENT OF ALL GOOD OBSERVATIONS FOR THIS PAGE

(2)=PERCENT OF ALL GOOD OBSERVATIONS FOR THIS PERIOD

C= CALM (WIND SPEED LESS THAN OR EQUAL TO .60 MPH)

TABLE 4F

VERMONT YAMKEE JAN-MAR 1983 JOINT FREQUENCY DISTRIBUTION (UPPER LEVEL)

297.0 FT WIND DATA

STABILITY CLASS F

CLASS FREQUENCY (PERCENT) = 13.56

WIND DIRECTION FROM

SPEED (MPH)	N	NNE	NE	ENE	E	ESE	SE	SSE	S	SSW	SW	WSW	W	WNW	NW	NNW	VRBL	TOTAL
CALM	0	0	0	0	0	(1)	0	0	0	0	0	0	0	0	0	0	0	0
(1)	0.00	0.00	0.00	0.00	0.00	0.00	0.00	0.00	0.00	0.00	0.00	0.00	0.00	0.00	0.00	0.00	0.00	0.00
(2)	0.00	0.00	0.00	0.00	0.00	0.00	0.00	0.00	0.00	0.00	0.00	0.00	0.00	0.00	0.00	0.00	0.00	0.00
C-3	2	4	7	4	2	2	4	4	1	3	1	0	0	0	5	3	0	42
(1)	1.22	2.44	4.27	2.44	1.22	1.22	2.44	2.44	.61	1.83	.61	0.00	0.00	0.00	3.05	1.83	0.00	25.61
(2)	.17	.33	.58	.33	.17	.17	.33	.33	.08	.25	.08	0.00	0.00	0.00	.41	.25	0.00	3.47
4-7	16	6	1	0	4	3	13	7	4	1	0	1	4	2	4	20	0	86
(1)	9.76	3.66	.61	0.00	2.44	1.83	7.93	4.27	2.44	.61	0.00	.61	2.44	1.22	2.44	12.20	0.00	52.44
(2)	1.32	.50	.08	0.00	.33	.25	1.08	.58	.33	.08	0.00	.08	.33	.17	.33	1.65	0.00	7.11
8-12	9	0	0	0	0	0	2	2	0	0	0	0	3	0	1	15	0	32
(1)	5.49	0.00	0.00	0.00	0.00	0.00	1.22	1.22	0.00	0.00	0.00	0.00	1.83	0.00	.61	9.15	0.00	19.51
(2)	.74	0.00	0.00	0.00	0.00	0.00	.17	.17	0.00	0.00	0.00	0.00	.25	0.00	.08	1.24	0.00	2.65
13-18	1	0	0	0	0	0	0	0	0	0	0	0	0	0	0	3	0	4
(1)	.61	0.00	0.00	0.00	0.00	0.00	0.00	0.00	0.00	0.00	0.00	0.00	0.00	0.00	0.00	1.83	0.00	2.44
(2)	.08	0.00	0.00	0.00	0.00	0.00	0.00	0.00	0.00	0.00	0.00	0.00	0.00	0.00	0.00	.25	0.00	.33
19-24	0	0	0	0	0	0	0	0	0	0	0	0	0	0	0	0	0	0
(1)	0.00	0.00	0.00	0.00	0.00	0.00	0.00	0.00	0.00	0.00	0.00	0.00	0.00	0.00	0.00	0.00	0.00	0.00
(2)	0.00	0.00	0.00	0.00	0.00	0.00	0.00	0.00	0.00	0.00	0.00	0.00	0.00	0.00	0.00	0.00	0.00	0.00
BT 24	0	0	0	0	0	0	0	0	0	0	0	0	0	0	0	0	0	0
(1)	0.00	0.00	0.00	0.00	0.00	0.00	0.00	0.00	0.00	0.00	0.00	0.00	0.00	0.00	0.00	0.00	0.00	0.00
(2)	0.00	0.00	0.00	0.00	0.00	0.00	0.00	0.00	0.00	0.00	0.00	0.00	0.00	0.00	0.00	0.00	0.00	0.00
ALL SPEEDS	28	10	8	4	6	5	19	13	5	4	1	1	7	2	10	41	0	164
(1)	17.07	6.10	4.88	2.44	3.66	3.05	11.59	7.93	3.05	2.44	.61	.61	4.27	1.22	6.10	25.00	0.00	100.00
(2)	2.32	.83	.66	.33	.50	.41	1.57	1.08	.41	.33	.08	.08	.58	.17	.83	3.39	0.00	13.56

(1)=PERCENT OF ALL GOOD OBSERVATIONS FOR THIS PERIOD

(2)=PERCENT OF ALL GOOD OBSERVATIONS FOR THIS PERIOD

C= CALM (WIND SPEED LESS THAN OR EQUAL TO .60 MPH)

TABLE 4C

VERMONT YANKEE JAN-MAR 1983 JOINT FREQUENCY DISTRIBUTION (UPPER LEVEL)

297.0 FT WIND DATA

STABILITY CLASS G

CLASS FREQUENCY (PERCENT) = 2.32

WIND DIRECTION FROM

SPEED (MPH)	N	NNE	NE	ENE	E	ESE	SE	SSE	S	SSW	SW	WSW	W	WNW	NN	NNW	VRBL	TOTAL
CALM	0	0	0	0	0	0	0	0	0	0	0	0	0	0	0	0	0	0
(1)	0.00	0.00	0.00	0.00	0.00	0.00	0.00	0.00	0.00	0.00	0.00	0.00	0.00	0.00	0.00	0.00	0.00	0.00
(2)	0.00	0.00	0.00	0.00	0.00	0.00	0.00	0.00	0.00	0.00	0.00	0.00	0.00	0.00	0.00	0.00	0.00	0.00
C-3	0	1	0	1	0	1	0	0	0	0	0	0	1	0	1	0	0	5
(1)	0.00	3.57	0.00	3.57	0.00	3.57	0.00	0.00	0.00	0.00	0.00	0.00	3.57	0.00	3.57	0.00	0.00	17.86
(2)	0.00	.08	0.00	.08	0.00	.08	0.00	0.00	0.00	0.00	0.00	0.00	.08	0.00	.08	0.00	0.00	.41
4-7	0	0	0	1	0	2	4	2	0	0	0	0	2	0	0	4	0	15
(1)	0.00	0.00	0.00	3.57	0.00	7.14	14.29	7.14	0.00	0.00	0.00	0.00	7.14	0.00	0.00	14.29	0.00	53.57
(2)	0.00	0.00	0.00	.08	0.00	.17	.33	.17	0.00	0.00	0.00	0.00	.17	0.00	0.00	.33	0.00	1.24
8-12	0	0	1	0	0	0	0	0	1	0	1	0	0	0	2	1	0	6
(1)	0.00	0.00	3.57	0.00	0.00	0.00	0.00	0.00	3.57	0.00	3.57	0.00	0.00	0.00	7.14	3.57	0.00	21.43
(2)	0.00	0.00	.08	0.00	0.00	0.00	0.00	0.00	.08	0.00	.08	0.00	0.00	0.00	.17	.08	0.00	.50
13-18	0	0	0	0	0	0	0	0	0	0	0	0	0	0	0	2	0	2
(1)	0.00	0.00	0.00	0.00	0.00	0.00	0.00	0.00	0.00	0.00	0.00	0.00	0.00	0.00	0.00	7.14	0.00	7.14
(2)	0.00	0.00	0.00	0.00	0.00	0.00	0.00	0.00	0.00	0.00	0.00	0.00	0.00	0.00	0.00	.17	0.00	.17
19-24	0	0	0	0	0	0	0	0	0	0	0	0	0	0	0	0	0	0
(1)	0.00	0.00	0.00	0.00	0.00	0.00	0.00	0.00	0.00	0.00	0.00	0.00	0.00	0.00	0.00	0.00	0.00	0.00
(2)	0.00	0.00	0.00	0.00	0.00	0.00	0.00	0.00	0.00	0.00	0.00	0.00	0.00	0.00	0.00	0.00	0.00	0.00
GT 24	0	0	0	0	0	0	0	0	0	0	0	0	0	0	0	0	0	0
(1)	0.00	0.00	0.00	0.00	0.00	0.00	0.00	0.00	0.00	0.00	0.00	0.00	0.00	0.00	0.00	0.00	0.00	0.00
(2)	0.00	0.00	0.00	0.00	0.00	0.00	0.00	0.00	0.00	0.00	0.00	0.00	0.00	0.00	0.00	0.00	0.00	0.00
ALL SPEEDS	0	1	1	2	0	3	4	2	1	0	1	0	3	0	3	7	0	28
(1)	0.00	3.57	3.57	7.14	0.00	10.71	14.29	7.14	3.57	0.00	3.57	0.00	10.71	0.00	10.71	25.00	0.00	100.00
(2)	0.00	.08	.08	.17	0.00	.25	.33	.17	.08	0.00	.08	0.00	.25	0.00	.25	.58	0.00	2.32

(1)=PERCENT OF ALL GOOD OBSERVATIONS FOR THIS PAGE

(2)=PERCENT OF ALL GOOD OBSERVATIONS FOR THIS PERIOD

C= CALM (WIND SPEED LESS THAN OR EQUAL TO .60 MPH)

TABLE 4H

VERMONT YANKEE JAN-MAR 1983 JOINT FREQUENCY DISTRIBUTION (UPPER LEVEL)

297.0 FT WIND DATA

STABILITY CLASS ALL

CLASS FREQUENCY (PERCENT) = 100.00

WIND DIRECTION FROM

SPEED (MPH)	N	NNE	NE	ENE	E	ESE	SE	SSE	S	SSW	SW	WSW	W	WNW	WW	WNW	VRBL	TOTAL
CALM	0	0	0	0	0	0	0	0	0	0	0	0	0	0	0	0	0	0
(1)	0.00	0.00	0.00	0.00	0.00	0.00	0.00	0.00	0.00	0.00	0.00	0.00	0.00	0.00	0.00	0.00	0.00	0.00
(2)	0.00	0.00	0.00	0.00	0.00	0.00	0.00	0.00	0.00	0.00	0.00	0.00	0.00	0.00	0.00	0.00	0.00	0.00
C-3	11	13	10	11	7	11	14	14	8	6	3	3	7	7	15	7	0	147
(1)	.91	1.08	.83	.91	.58	.91	1.16	1.16	.66	.50	.25	.25	.58	.58	1.24	.58	0.00	12.16
(2)	.91	1.08	.83	.91	.58	.91	1.16	1.16	.66	.50	.25	.25	.58	.58	1.24	.58	0.00	12.16
4-7	41	22	3	3	9	13	54	34	8	4	3	2	11	9	22	68	0	306
(1)	3.39	1.82	.25	.25	.74	1.08	4.47	2.81	.66	.33	.25	.17	.91	.74	1.82	5.62	0.00	25.31
(2)	3.39	1.82	.25	.25	.74	1.08	4.47	2.81	.66	.33	.25	.17	.91	.74	1.82	5.62	0.00	25.31
8-12	78	12	3	4	0	4	18	23	10	1	2	2	16	23	36	122	0	354
(1)	6.45	.99	.25	.33	0.00	.33	1.49	1.90	.83	.08	.17	.17	1.32	1.90	2.98	10.09	0.00	29.28
(2)	6.45	.99	.25	.33	0.00	.33	1.49	1.90	.83	.08	.17	.17	1.32	1.90	2.98	10.09	0.00	29.28
13-18	56	0	0	0	0	0	2	8	2	0	0	1	11	37	25	94	0	236
(1)	4.63	0.00	0.00	0.00	0.00	0.00	.17	.66	.17	0.00	0.00	.08	.91	3.06	2.07	7.78	0.00	19.52
(2)	4.63	0.00	0.00	0.00	0.00	0.00	.17	.66	.17	0.00	0.00	.08	.91	3.06	2.07	7.78	0.00	19.52
19-24	26	0	0	0	0	0	0	0	0	0	0	0	1	5	16	66	0	114
(1)	2.15	0.00	0.00	0.00	0.00	0.00	0.00	0.00	0.00	0.00	0.00	0.00	.08	.41	1.32	5.46	0.00	9.43
(2)	2.15	0.00	0.00	0.00	0.00	0.00	0.00	0.00	0.00	0.00	0.00	0.00	.08	.41	1.32	5.46	0.00	9.43
BT 24	9	0	0	0	0	0	0	0	0	0	0	0	0	0	3	40	0	52
(1)	.74	0.00	0.00	0.00	0.00	0.00	0.00	0.00	0.00	0.00	0.00	0.00	0.00	0.00	.25	3.31	0.00	4.30
(2)	.74	0.00	0.00	0.00	0.00	0.00	0.00	0.00	0.00	0.00	0.00	0.00	0.00	0.00	.25	3.31	0.00	4.30
ALL SPEEDS	221	47	16	18	16	28	88	79	28	11	8	8	46	81	117	397	0	1209
(1)	18.28	3.89	1.32	1.49	1.32	2.32	7.28	6.53	2.32	.91	.66	.66	3.80	6.70	9.68	32.84	0.00	100.00
(2)	18.28	3.89	1.32	1.49	1.32	2.32	7.28	6.53	2.32	.91	.66	.66	3.80	6.70	9.68	32.84	0.00	100.00

(1)=PERCENT OF ALL GOOD OBSERVATIONS FOR THIS PAGE

(2)=PERCENT OF ALL GOOD OBSERVATIONS FOR THIS PERIOD

C= CALM (WIND SPEED LESS THAN OR EQUAL TO .60 MPH)

TABLE 5A

VERMONT YANKEE APR-JUN 1963 JOINT FREQUENCY DISTRIBUTION (UPPER LEVEL)

297.0 FT WIND DATA

STABILITY CLASS A

CLASS FREQUENCY (PERCENT) = 1.06

WIND DIRECTION FROM

SPEED (MPH)	N	NNE	NE	ENE	E	ESE	SE	SSE	S	SSW	SW	WSW	W	WNW	NW	NNW	VRBL	TOTAL
CALM	0	0	0	0	0	0	0	0	0	0	0	0	0	0	0	0	0	0
(1)	0.00	0.00	0.00	0.00	0.00	0.00	0.00	0.00	0.00	0.00	0.00	0.00	0.00	0.00	0.00	0.00	0.00	0.00
(2)	0.00	0.00	0.00	0.00	0.00	0.00	0.00	0.00	0.00	0.00	0.00	0.00	0.00	0.00	0.00	0.00	0.00	0.00
C-3	0	0	0	0	0	0	0	0	0	0	0	0	0	0	0	0	0	0
(1)	0.00	0.00	0.00	0.00	0.00	0.00	0.00	0.00	0.00	0.00	0.00	0.00	0.00	0.00	0.00	0.00	0.00	0.00
(2)	0.00	0.00	0.00	0.00	0.00	0.00	0.00	0.00	0.00	0.00	0.00	0.00	0.00	0.00	0.00	0.00	0.00	0.00
4-7	1	0	0	0	0	1	0	1	0	0	0	0	0	1	0	0	0	4
(1)	6.25	0.00	0.00	0.00	0.00	6.25	0.00	6.25	0.00	0.00	0.00	0.00	0.00	6.25	0.00	0.00	0.00	25.00
(2)	.07	0.00	0.00	0.00	0.00	.07	0.00	.07	0.00	0.00	0.00	0.00	0.00	.07	0.00	0.00	0.00	.27
8-12	0	0	0	0	0	0	1	3	0	0	0	0	0	0	1	0	0	5
(1)	0.00	0.00	0.00	0.00	0.00	0.00	6.25	18.75	0.00	0.00	0.00	0.00	0.00	0.00	6.25	0.00	0.00	31.25
(2)	0.00	0.00	0.00	0.00	0.00	0.00	.07	.20	0.00	0.00	0.00	0.00	0.00	0.00	.07	0.00	0.00	.33
13-18	0	0	0	0	0	0	0	4	1	0	0	0	0	0	1	0	0	6
(1)	0.00	0.00	0.00	0.00	0.00	0.00	0.00	25.00	6.25	0.00	0.00	0.00	0.00	0.00	6.25	0.00	0.00	37.50
(2)	0.00	0.00	0.00	0.00	0.00	0.00	0.00	.27	.07	0.00	0.00	0.00	0.00	0.00	.07	0.00	0.00	.40
19-24	0	0	0	0	0	0	0	0	1	0	0	0	0	0	0	0	0	1
(1)	0.00	0.00	0.00	0.00	0.00	0.00	0.00	0.00	6.25	0.00	0.00	0.00	0.00	0.00	0.00	0.00	0.00	6.25
(2)	0.00	0.00	0.00	0.00	0.00	0.00	0.00	0.00	.07	0.00	0.00	0.00	0.00	0.00	0.00	0.00	0.00	.07
GT 24	0	0	0	0	0	0	0	0	0	0	0	0	0	0	0	0	0	0
(1)	0.00	0.00	0.00	0.00	0.00	0.00	0.00	0.00	0.00	0.00	0.00	0.00	0.00	0.00	0.00	0.00	0.00	0.00
(2)	0.00	0.00	0.00	0.00	0.00	0.00	0.00	0.00	0.00	0.00	0.00	0.00	0.00	0.00	0.00	0.00	0.00	0.00
ALL SPEEDS	1	0	0	0	0	1	1	8	2	0	0	0	0	1	2	0	0	16
(1)	6.25	0.00	0.00	0.00	0.00	6.25	6.25	50.00	12.50	0.00	0.00	0.00	0.00	6.25	12.50	0.00	0.00	100.00
(2)	.07	0.00	0.00	0.00	0.00	.07	.07	.53	.13	0.00	0.00	0.00	0.00	.07	.13	0.00	0.00	1.06

(1)=PERCENT OF ALL GOOD OBSERVATIONS FOR THIS PAGE

(2)=PERCENT OF ALL GOOD OBSERVATIONS FOR THIS PERIOD

C= CALM (WIND SPEED LESS THAN OR EQUAL TO .60 MPH)

TABLE 5B

VERMONT YAMKEE APR-JUN 1983 JOINT FREQUENCY DISTRIBUTION (UPPER LEVEL)

297.0 FT WIND DATA

STABILITY CLASS B

CLASS FREQUENCY (PERCENT) = 3.45

WIND DIRECTION FROM

SPEED (MPH)	N	NNE	NE	ENE	E	ESE	SE	SSE	S	SSW	SW	WSW	W	WNW	WW	WNW	VRBL	TOTAL
CALM	0	0	0	0	0	0	0	0	0	0	0	0	0	0	0	0	0	0
(1)	0.00	0.00	0.00	0.00	0.00	0.00	0.00	0.00	0.00	0.00	0.00	0.00	0.00	0.00	0.00	0.00	0.00	0.00
(2)	0.00	0.00	0.00	0.00	0.00	0.00	0.00	0.00	0.00	0.00	0.00	0.00	0.00	0.00	0.00	0.00	0.00	0.00
C-3	0	0	1	0	1	0	0	0	0	1	0	0	1	0	0	1	0	5
(1)	0.00	0.00	1.92	0.00	1.92	0.00	0.00	0.00	0.00	1.92	0.00	0.00	1.92	0.00	0.00	1.92	0.00	9.62
(2)	0.00	0.00	.07	0.00	.07	0.00	0.00	0.00	0.00	.07	0.00	0.00	.07	0.00	0.00	.07	0.00	.33
4-7	0	1	1	0	0	2	5	2	1	0	0	0	1	0	2	0	0	15
(1)	0.00	1.92	1.92	0.00	0.00	3.85	9.62	3.85	1.92	0.00	0.00	0.00	1.92	0.00	3.85	0.00	0.00	28.85
(2)	0.00	.07	.07	0.00	0.00	.13	.33	.13	.07	0.00	0.00	0.00	.07	0.00	.13	0.00	0.00	.99
8-12	0	0	0	0	2	3	0	3	1	0	0	0	0	1	0	1	0	11
(1)	0.00	0.00	0.00	0.00	3.85	5.77	0.00	5.77	1.92	0.00	0.00	0.00	0.00	1.92	0.00	1.92	0.00	21.15
(2)	0.00	0.00	0.00	0.00	.13	.20	0.00	.20	.07	0.00	0.00	0.00	0.00	.07	0.00	.07	0.00	.73
13-18	1	1	0	0	0	0	0	0	2	0	0	0	1	1	2	8	0	16
(1)	1.92	1.92	0.00	0.00	0.00	0.00	0.00	0.00	3.85	0.00	0.00	0.00	1.92	1.92	3.85	15.38	0.00	30.77
(2)	.07	.07	0.00	0.00	0.00	0.00	0.00	0.00	.13	0.00	0.00	0.00	.07	.07	.13	.53	0.00	1.06
19-24	0	0	0	0	0	0	0	0	4	1	0	0	0	0	0	0	0	5
(1)	0.00	0.00	0.00	0.00	0.00	0.00	0.00	0.00	7.69	1.92	0.00	0.00	0.00	0.00	0.00	0.00	0.00	9.62
(2)	0.00	0.00	0.00	0.00	0.00	0.00	0.00	0.00	.27	.07	0.00	0.00	0.00	0.00	0.00	0.00	0.00	.33
BT 24	0	0	0	0	0	0	0	0	0	0	0	0	0	0	0	0	0	0
(1)	0.00	0.00	0.00	0.00	0.00	0.00	0.00	0.00	0.00	0.00	0.00	0.00	0.00	0.00	0.00	0.00	0.00	0.00
(2)	0.00	0.00	0.00	0.00	0.00	0.00	0.00	0.00	0.00	0.00	0.00	0.00	0.00	0.00	0.00	0.00	0.00	0.00
ALL SPEEDS	1	2	2	0	3	5	5	5	8	2	0	0	3	2	4	10	0	52
(1)	1.92	3.85	3.85	0.00	5.77	9.62	9.62	9.62	15.38	3.85	0.00	0.00	5.77	3.85	7.69	19.23	0.00	100.00
(2)	.07	.13	.13	0.00	.20	.33	.33	.33	.53	.13	0.00	0.00	.20	.13	.27	.66	0.00	3.45

(1)=PERCENT OF ALL GOOD OBSERVATIONS FOR THIS PAGE

(2)=PERCENT OF ALL GOOD OBSERVATIONS FOR THIS PERIOD

C= CALM (WIND SPEED LESS THAN OR EQUAL TO .60 MPH)

TABLE 5C

VERMONT YANKEE APR-JUN 1983 JOINT FREQUENCY DISTRIBUTION (UPPER LEVEL)

297.0 FT WIND DATA

STABILITY CLASS C

CLASS FREQUENCY (PERCENT) = 5.37

WIND DIRECTION FROM

SPEED (MPH)	N	NNE	NE	ENE	E	ESE	SE	SSE	S	SSW	SW	WSW	W	WNW	WW	WNW	VRBL	TOTAL
CALM	0	0	0	0	0	0	0	0	0	0	0	0	0	0	0	0	0	0
(1)	0.00	0.00	0.00	0.00	0.00	0.00	0.00	0.00	0.00	0.00	0.00	0.00	0.00	0.00	0.00	0.00	0.00	0.00
(2)	0.00	0.00	0.00	0.00	0.00	0.00	0.00	0.00	0.00	0.00	0.00	0.00	0.00	0.00	0.00	0.00	0.00	0.00
C-3	1	1	2	3	0	1	0	0	1	0	2	0	0	0	2	1	0	14
(1)	1.23	1.23	2.47	3.70	0.00	1.23	0.00	0.00	1.23	0.00	2.47	0.00	0.00	0.00	2.47	1.23	0.00	17.28
(2)	.07	.07	.13	.20	0.00	.07	0.00	0.00	.07	0.00	.13	0.00	0.00	0.00	.13	.07	0.00	.93
4-7	2	2	1	2	3	6	2	2	2	0	0	0	1	0	1	2	0	26
(1)	2.47	2.47	1.23	2.47	3.70	7.41	2.47	2.47	2.47	0.00	0.00	0.00	1.23	0.00	1.23	2.47	0.00	32.10
(2)	.13	.13	.07	.13	.20	.40	.13	.13	.13	0.00	0.00	0.00	.07	0.00	.07	.13	0.00	1.72
8-12	1	0	0	0	0	0	3	2	3	1	0	1	1	0	0	2	0	14
(1)	1.23	0.00	0.00	0.00	0.00	0.00	3.70	2.47	3.70	1.23	0.00	1.23	1.23	0.00	0.00	2.47	0.00	17.28
(2)	.07	0.00	0.00	0.00	0.00	0.00	.20	.13	.20	.07	0.00	.07	.07	0.00	0.00	.13	0.00	.93
13-18	1	0	0	0	0	0	0	0	4	1	0	0	3	3	3	4	0	19
(1)	1.23	0.00	0.00	0.00	0.00	0.00	0.00	0.00	4.94	1.23	0.00	0.00	3.70	3.70	3.70	4.94	0.00	23.46
(2)	.07	0.00	0.00	0.00	0.00	0.00	0.00	0.00	.27	.07	0.00	0.00	.20	.20	.20	.27	0.00	1.26
19-24	1	0	0	0	0	0	0	1	2	1	0	0	0	1	0	1	0	7
(1)	1.23	0.00	0.00	0.00	0.00	0.00	0.00	1.23	2.47	1.23	0.00	0.00	0.00	1.23	0.00	1.23	0.00	8.64
(2)	.07	0.00	0.00	0.00	0.00	0.00	0.00	.07	.13	.07	0.00	0.00	0.00	.07	0.00	.07	0.00	.46
25-29	0	0	0	0	0	0	0	0	1	0	0	0	0	0	0	0	0	1
(1)	0.00	0.00	0.00	0.00	0.00	0.00	0.00	0.00	1.23	0.00	0.00	0.00	0.00	0.00	0.00	0.00	0.00	1.23
(2)	0.00	0.00	0.00	0.00	0.00	0.00	0.00	0.00	.07	0.00	0.00	0.00	0.00	0.00	0.00	0.00	0.00	.07
ALL SPEEDS	6	3	3	5	3	7	5	5	13	3	2	1	5	4	6	10	0	81
(1)	7.41	3.70	3.70	6.17	3.70	8.64	6.17	6.17	16.05	3.70	2.47	1.23	6.17	4.94	7.41	12.35	0.00	100.00
(2)	.40	.20	.20	.33	.20	.46	.33	.33	.86	.20	.13	.07	.33	.27	.40	.66	0.00	5.37

(1)=PERCENT OF ALL GOOD OBSERVATIONS FOR THIS PAGE

(2)=PERCENT OF ALL GOOD OBSERVATIONS FOR THIS PERIOD

C= CALM (WIND SPEED LESS THAN OR EQUAL TO .60 MPH)

TABLE 5D

VERMONT YANKEE APR-JUN 1983 JOINT FREQUENCY DISTRIBUTION (UPPER LEVEL)

297.0 FT WIND DATA

STABILITY CLASS D

CLASS FREQUENCY (PERCENT) = 50.93

WIND DIRECTION FROM

SPEED (MPH)	N	NNE	NE	ENE	E	ESE	SE	SSE	S	SSW	SW	WSW	W	WNW	WW	WNW	VRBL	TOTAL
CALM	0	0	0	0	0	0	0	0	0	0	0	0	0	0	0	0	0	0
(1)	0.00	0.00	0.00	0.00	0.00	0.00	0.00	0.00	0.00	0.00	0.00	0.00	0.00	0.00	0.00	0.00	0.00	0.00
(2)	0.00	0.00	0.00	0.00	0.00	0.00	0.00	0.00	0.00	0.00	0.00	0.00	0.00	0.00	0.00	0.00	0.00	0.00
C-3	9	2	3	3	4	8	13	7	5	1	2	3	1	3	7	7	0	78
(1)	1.17	.26	.39	.39	.52	1.04	1.69	.91	.65	.13	.26	.39	.13	.39	.91	.91	0.00	10.16
(2)	.60	.13	.20	.20	.27	.53	.86	.46	.33	.07	.13	.20	.07	.20	.46	.46	0.00	5.17
4-7	9	3	0	8	19	16	37	34	13	6	3	0	4	3	6	10	0	171
(1)	1.17	.39	0.00	1.04	2.47	2.08	4.82	4.43	1.69	.78	.39	0.00	.52	.39	.78	1.30	0.00	22.27
(2)	.60	.20	0.00	.53	1.26	1.06	2.45	2.25	.86	.40	.20	0.00	.27	.20	.40	.66	0.00	11.34
8-12	34	6	1	2	5	19	28	39	29	9	7	9	17	19	14	23	0	261
(1)	4.43	.78	.13	.26	.65	2.47	3.65	5.08	3.78	1.17	.91	1.17	2.21	2.47	1.82	2.99	0.00	33.98
(2)	2.25	.40	.07	.13	.33	1.26	1.86	2.59	1.92	.60	.46	.60	1.13	1.26	.93	1.53	0.00	17.31
13-18	34	4	0	1	0	1	9	7	44	18	2	5	6	16	23	24	0	194
(1)	4.43	.52	0.00	.13	0.00	.13	1.17	.91	5.73	2.34	.26	.65	.78	2.08	2.99	3.13	0.00	25.26
(2)	2.25	.27	0.00	.07	0.00	.07	.60	.46	2.92	1.19	.13	.33	.40	1.06	1.53	1.59	0.00	12.86
19-24	11	1	0	0	2	0	5	0	18	8	0	0	2	5	3	2	0	57
(1)	1.43	.13	0.00	0.00	.26	0.00	.65	0.00	2.34	1.04	0.00	0.00	.26	.65	.39	.26	0.00	7.42
(2)	.73	.07	0.00	0.00	.13	0.00	.33	0.00	1.19	.53	0.00	0.00	.13	.33	.20	.13	0.00	3.78
BT 24	3	0	0	0	1	0	0	0	3	0	0	0	0	0	0	0	0	7
(1)	.39	0.00	0.00	0.00	.13	0.00	0.00	0.00	.39	0.00	0.00	0.00	0.00	0.00	0.00	0.00	0.00	.91
(2)	.20	0.00	0.00	0.00	.07	0.00	0.00	0.00	.20	0.00	0.00	0.00	0.00	0.00	0.00	0.00	0.00	.46
ALL SPEEDS	100	16	4	14	31	44	92	87	112	42	14	17	30	46	53	66	0	768
(1)	13.02	2.08	.52	1.82	4.04	5.73	11.98	11.33	14.58	5.47	1.22	2.21	3.91	5.99	6.90	8.59	0.00	100.00
(2)	6.63	1.06	.27	.93	2.06	2.92	6.10	5.77	7.43	2.79	.93	1.13	1.99	3.05	3.31	4.38	0.00	50.93

(1)=PERCENT OF ALL GOOD OBSERVATIONS FOR THIS PAGE

(2)=PERCENT OF ALL GOOD OBSERVATIONS FOR THIS PERIOD

C= CALM (WIND SPEED LESS THAN OR EQUAL TO .60 MPH)

TABLE 5E

VERMONT YANKEE APR-JUN 1983 JOINT FREQUENCY DISTRIBUTION (UPPER LEVEL)

297.0 FT WIND DATA

STABILITY CLASS F

CLASS FREQUENCY (PERCENT) = 10.21

WIND DIRECTION FROM

SPEED (MPH)	N	NNE	NE	ENE	E	ESE	SE	SSE	S	SSW	SW	WSW	W	WNW	NW	NNW	VRBL	TOTAL
CALP	0	0	0	0	0	0	0	0	0	0	0	0	0	0	0	0	0	0
(1)	0.00	0.00	0.00	0.00	0.00	0.00	0.00	0.00	0.00	0.00	0.00	0.00	0.00	0.00	0.00	0.00	0.00	0.00
(2)	0.00	0.00	0.00	0.00	0.00	0.00	0.00	0.00	0.00	0.00	0.00	0.00	0.00	0.00	0.00	0.00	0.00	0.00
C-3	6	5	3	4	1	9	8	6	2	1	3	3	0	4	3	6	0	64
(1)	3.90	3.25	1.95	2.60	.65	5.84	5.19	3.90	1.30	.65	1.95	1.95	0.00	2.60	1.95	3.90	0.00	41.56
(2)	.40	.33	.20	.27	.07	.60	.53	.40	.13	.07	.20	.20	0.00	.27	.20	.40	0.00	4.24
4-7	4	2	0	0	4	4	10	5	3	2	1	1	2	1	6	14	0	59
(1)	2.60	1.30	0.00	0.00	2.60	2.60	6.49	3.25	1.95	1.30	.65	.65	1.30	.65	3.90	9.09	0.00	38.31
(2)	.27	.13	0.00	0.00	.27	.27	.66	.33	.20	.13	.07	.07	.13	.07	.40	.93	0.00	3.91
8-12	6	0	0	0	1	1	2	4	1	1	1	1	2	1	0	11	0	30
(1)	2.60	0.00	0.00	0.00	.65	.65	1.30	2.60	.65	.65	.65	.65	1.30	.65	0.00	7.14	0.00	19.48
(2)	.27	0.00	0.00	0.00	.07	.07	.13	.27	.07	.07	.07	.07	.13	.07	0.00	.73	0.00	1.99
13-18	0	0	0	0	0	0	0	0	1	0	0	0	0	0	0	0	0	1
(1)	0.00	0.00	0.00	0.00	0.00	0.00	0.00	0.00	.65	0.00	0.00	0.00	0.00	0.00	0.00	0.00	0.00	.65
(2)	0.00	0.00	0.00	0.00	0.00	0.00	0.00	0.00	.07	0.00	0.00	0.00	0.00	0.00	0.00	0.00	0.00	.07
19-24	0	0	0	0	0	0	0	0	0	0	0	0	0	0	0	0	0	0
(1)	0.00	0.00	0.00	0.00	0.00	0.00	0.00	0.00	0.00	0.00	0.00	0.00	0.00	0.00	0.00	0.00	0.00	0.00
(2)	0.00	0.00	0.00	0.00	0.00	0.00	0.00	0.00	0.00	0.00	0.00	0.00	0.00	0.00	0.00	0.00	0.00	0.00
GT 24	0	0	0	0	0	0	0	0	0	0	0	0	0	0	0	0	0	0
(1)	0.00	0.00	0.00	0.00	0.00	0.00	0.00	0.00	0.00	0.00	0.00	0.00	0.00	0.00	0.00	0.00	0.00	0.00
(2)	0.00	0.00	0.00	0.00	0.00	0.00	0.00	0.00	0.00	0.00	0.00	0.00	0.00	0.00	0.00	0.00	0.00	0.00
ALL SPEEDS	14	7	3	4	6	14	20	15	7	4	5	5	4	6	9	31	0	154
(1)	9.09	4.55	1.95	2.60	3.90	9.09	12.99	9.74	4.55	2.60	3.25	3.25	2.60	3.90	5.84	20.13	0.00	100.00
(2)	.93	.46	.20	.27	.40	.93	1.33	.99	.46	.27	.33	.33	.27	.40	.60	2.06	0.00	10.21

(1)=PERCENT OF ALL GOOD OBSERVATIONS FOR THIS PAGE

(2)=PERCENT OF ALL GOOD OBSERVATIONS FOR THIS PERIOD

C= CALM (WIND SPEED LESS THAN OR EQUAL TO .60 MPH)

TABLE 5F

VERMONT YANKEE APR-JUN 1983 JOINT FREQUENCY DISTRIBUTION (UPPER LEVEL)

297.0 FT WIND DATA

STABILITY CLASS E

CLASS FREQUENCY (PERCENT) = 27.72

WIND DIRECTION FROM

SPEED (MPH)	N	NNE	NE	ENE	E	ESE	SE	SSE	S	SSW	SW	WSW	W	WNW	WW	WNW	VRBL	TOTAL
CALM	0	0	0	0	0	0	0	0	0	0	0	0	0	0	0	0	0	0
(1)	0.00	0.00	0.00	0.00	0.00	0.00	0.00	0.00	0.00	0.00	0.00	0.00	0.00	0.00	0.00	0.00	0.00	0.00
(2)	0.00	0.00	0.00	0.00	0.00	0.00	0.00	0.00	0.00	0.00	0.00	0.00	0.00	0.00	0.00	0.00	0.00	0.00
C-3	14	5	8	8	10	5	10	11	8	2	3	4	1	5	5	13	0	110
(1)	3.35	1.20	1.91	1.91	2.39	.72	2.39	2.63	1.91	.48	.72	.96	.24	1.20	1.20	3.11	0.00	26.32
(2)	.93	.33	.53	.53	.66	.20	.66	.73	.53	.13	.20	.27	.07	.33	.33	.86	0.00	7.29
4-7	23	2	2	3	5	6	25	25	11	2	1	3	3	4	5	27	0	147
(1)	5.50	.48	.48	.72	1.20	1.44	5.98	5.98	2.63	.48	.24	.72	.72	.96	1.20	6.46	0.00	35.17
(2)	1.53	.13	.13	.20	.33	.40	1.66	1.66	.73	.13	.07	.20	.20	.27	.33	1.79	0.00	9.75
8-12	8	0	0	1	0	1	18	14	11	3	3	3	6	9	9	15	0	101
(1)	1.91	0.00	0.00	.24	0.00	.24	4.31	3.35	2.63	.72	.72	.72	1.44	2.15	2.15	3.59	0.00	24.16
(2)	.53	0.00	0.00	.07	0.00	.07	1.19	.93	.73	.20	.20	.20	.40	.60	.60	.99	0.00	6.70
13-18	13	0	0	0	2	0	1	1	10	2	0	0	4	3	1	12	0	49
(1)	3.11	0.00	0.00	0.00	.48	0.00	.24	.24	2.39	.48	0.00	0.00	.96	.72	.24	2.87	0.00	11.72
(2)	.86	0.00	0.00	0.00	.13	0.00	.07	.07	.66	.13	0.00	0.00	.27	.20	.07	.80	0.00	3.25
19-24	2	0	0	0	0	0	0	0	5	1	0	0	2	0	0	1	0	11
(1)	.48	0.00	0.00	0.00	0.00	0.00	0.00	0.00	1.20	.24	0.00	0.00	.48	0.00	0.00	.24	0.00	2.63
(2)	.13	0.00	0.00	0.00	0.00	0.00	0.00	0.00	.33	.07	0.00	0.00	.13	0.00	0.00	.07	0.00	.73
BT 24	0	0	0	0	0	0	0	0	0	0	0	0	0	0	0	0	0	0
(1)	0.00	0.00	0.00	0.00	0.00	0.00	0.00	0.00	0.00	0.00	0.00	0.00	0.00	0.00	0.00	0.00	0.00	0.00
(2)	0.00	0.00	0.00	0.00	0.00	0.00	0.00	0.00	0.00	0.00	0.00	0.00	0.00	0.00	0.00	0.00	0.00	0.00
ALL SPEEDS	60	7	10	12	17	10	54	51	45	10	7	10	16	21	20	68	0	418
(1)	14.35	1.67	2.39	2.87	4.07	2.39	12.92	12.20	10.77	2.39	1.67	2.39	3.83	5.02	4.78	16.27	0.00	100.00
(2)	3.98	.46	.66	.80	1.13	.66	3.58	3.38	2.98	.66	.46	.66	1.06	1.39	1.33	4.51	0.00	27.72

(1)=PERCENT OF ALL GOOD OBSERVATIONS FOR THIS PAGE
 (2)=PERCENT OF ALL GOOD OBSERVATIONS FOR THIS PERIOD

C= CALM (WIND SPEED LESS THAN OR EQUAL TO .60 MPH)

TABLE 5G

VERMONT YANKEE APR-JUN 1983 JOINT FREQUENCY DISTRIBUTION (UPPER LEVEL)

297.0 FT WIND DATA

STABILITY CLASS B

CLASS FREQUENCY (PERCENT) = 1.26

WIND DIRECTION FROM

SPEED (MPH)	N	NNE	NE	ENE	E	ESE	SE	SSE	S	SSW	SW	WSW	W	WNW	WW	WNW	VRBL	TOTAL
CALM	0	0	0	0	0	0	0	0	0	0	0	0	0	0	0	0	0	0
(1)	0.00	0.00	0.00	0.00	0.00	0.00	0.00	0.00	0.00	0.00	0.00	0.00	0.00	0.00	0.00	0.00	0.00	0.00
(2)	0.00	0.00	0.00	0.00	0.00	0.00	0.00	0.00	0.00	0.00	0.00	0.00	0.00	0.00	0.00	0.00	0.00	0.00
0-3	1	0	0	1	0	2	0	0	1	0	0	0	0	0	0	0	0	5
(1)	5.26	0.00	0.00	5.26	0.00	10.53	0.00	0.00	5.26	0.00	0.00	0.00	0.00	0.00	0.00	0.00	0.00	26.32
(2)	.07	0.00	0.00	.07	0.00	.13	0.00	0.00	.07	0.00	0.00	0.00	0.00	0.00	0.00	0.00	0.00	.33
4-7	3	0	0	0	0	0	0	0	1	0	0	0	1	3	0	1	0	9
(1)	15.79	0.00	0.00	0.00	0.00	0.00	0.00	0.00	5.26	0.00	0.00	0.00	5.26	15.79	0.00	5.26	0.00	47.37
(2)	.20	0.00	0.00	0.00	0.00	0.00	0.00	0.00	.07	0.00	0.00	0.00	.07	.20	0.00	.07	0.00	.60
8-12	0	0	0	0	0	0	2	0	1	0	1	1	0	0	0	0	0	5
(1)	0.00	0.00	0.00	0.00	0.00	0.00	10.53	0.00	5.26	0.00	5.26	5.26	0.00	0.00	0.00	0.00	0.00	26.32
(2)	0.00	0.00	0.00	0.00	0.00	0.00	.13	0.00	.07	0.00	.07	.07	0.00	0.00	0.00	0.00	0.00	.33
13-18	0	0	0	0	0	0	0	0	0	0	0	0	0	0	0	0	0	0
(1)	0.00	0.00	0.00	0.00	0.00	0.00	0.00	0.00	0.00	0.00	0.00	0.00	0.00	0.00	0.00	0.00	0.00	0.00
(2)	0.00	0.00	0.00	0.00	0.00	0.00	0.00	0.00	0.00	0.00	0.00	0.00	0.00	0.00	0.00	0.00	0.00	0.00
19-24	0	0	0	0	0	0	0	0	0	0	0	0	0	0	0	0	0	0
(1)	0.00	0.00	0.00	0.00	0.00	0.00	0.00	0.00	0.00	0.00	0.00	0.00	0.00	0.00	0.00	0.00	0.00	0.00
(2)	0.00	0.00	0.00	0.00	0.00	0.00	0.00	0.00	0.00	0.00	0.00	0.00	0.00	0.00	0.00	0.00	0.00	0.00
GT 24	0	0	0	0	0	0	0	0	0	0	0	0	0	0	0	0	0	0
(1)	0.00	0.00	0.00	0.00	0.00	0.00	0.00	0.00	0.00	0.00	0.00	0.00	0.00	0.00	0.00	0.00	0.00	0.00
(2)	0.00	0.00	0.00	0.00	0.00	0.00	0.00	0.00	0.00	0.00	0.00	0.00	0.00	0.00	0.00	0.00	0.00	0.00
ALL SPEEDS	4	0	0	1	0	2	2	0	3	0	1	1	1	3	0	1	0	19
(1)	21.05	0.00	0.00	5.26	0.00	10.53	10.53	0.00	15.79	0.00	5.26	5.26	5.26	15.79	0.00	5.26	0.00	100.00
(2)	.27	0.00	0.00	.07	0.00	.13	.13	0.00	.20	0.00	.07	.07	.07	.20	0.00	.07	0.00	1.26

(1)=PERCENT OF ALL GOOD OBSERVATIONS FOR THIS PAGE

(2)=PERCENT OF ALL GOOD OBSERVATIONS FOR THIS PERIOD

C= CALM (WIND SPEED LESS THAN OR EQUAL TO .60 MPH)

TABLE 5H

VERMONT YANKEE APR-JUN 1983 JOINT FREQUENCY DISTRIBUTION (UPPER LEVEL)

297.0 FT WIND DATA

STABILITY CLASS ALL

CLASS FREQUENCY (PERCENT) = 100.00

WIND DIRECTION FROM

SPEED(MPH)	N	NNE	NE	ENE	E	ESE	SE	SSE	S	SSW	SW	WSW	W	WNW	NW	NNW	VRBL	TOTAL
CALM	0	0	0	0	0	0	0	0	0	0	0	0	0	0	0	0	0	0
(1)	0.00	0.00	0.00	0.00	0.00	0.00	0.00	0.00	0.00	0.00	0.00	0.00	0.00	0.00	0.00	0.00	0.00	0.00
(2)	0.00	0.00	0.00	0.00	0.00	0.00	0.00	0.00	0.00	0.00	0.00	0.00	0.00	0.00	0.00	0.00	0.00	0.00
C-3	31	13	17	19	16	23	31	24	17	5	10	10	3	12	17	28	0	276
(1)	2.06	.86	1.13	1.26	1.06	1.53	2.06	1.59	1.13	.33	.66	.66	.20	.80	1.13	1.86	0.00	18.30
(2)	2.06	.86	1.13	1.26	1.06	1.53	2.06	1.59	1.13	.33	.66	.66	.20	.80	1.13	1.86	0.00	18.30
4-7	42	10	4	13	31	35	79	69	31	10	5	4	12	12	20	54	0	431
(1)	2.79	.66	.27	.86	2.06	2.32	5.24	4.58	2.06	.66	.33	.27	.80	.80	1.33	3.58	0.00	28.58
(2)	2.79	.66	.27	.86	2.06	2.32	5.24	4.58	2.06	.66	.33	.27	.80	.80	1.33	3.58	0.00	28.58
8-12	47	6	1	3	8	24	54	65	46	14	12	15	26	30	24	52	0	427
(1)	3.12	.40	.07	.20	.53	1.59	3.56	4.31	3.05	.93	.80	.99	1.72	1.99	1.59	4.5	0.00	28.32
(2)	3.12	.40	.07	.20	.53	1.59	3.56	4.31	3.05	.93	.80	.99	1.72	1.99	1.59	3.45	0.00	28.32
13-18	49	5	0	1	2	1	10	12	62	21	2	5	14	23	30	48	0	285
(1)	3.25	.33	0.00	.07	.13	.07	.66	.80	4.11	1.39	.13	.33	.93	1.53	1.99	3.18	0.00	18.90
(2)	3.25	.33	0.00	.07	.13	.07	.66	.80	4.11	1.39	.13	.33	.93	1.53	1.99	3.18	0.00	18.90
19-24	14	1	0	0	2	0	5	1	30	11	0	0	4	6	3	4	0	81
(1)	.93	.07	0.00	0.00	.13	0.00	.33	.07	1.99	.73	0.00	0.00	.27	.40	.20	.27	0.00	5.37
(2)	.93	.07	0.00	0.00	.13	0.00	.33	.07	1.99	.73	0.00	0.00	.27	.40	.20	.27	0.00	5.37
BT 24	3	0	0	0	1	0	0	0	4	0	0	0	0	0	0	0	0	8
(1)	.20	0.00	0.00	0.00	.07	0.00	0.00	0.00	.27	0.00	0.00	0.00	0.00	0.00	0.00	0.00	0.00	.53
(2)	.20	0.00	0.00	0.00	.07	0.00	0.00	0.00	.27	0.00	0.00	0.00	0.00	0.00	0.00	0.00	0.00	.53
ALL SPEEDS	126	35	22	36	60	83	179	171	190	61	29	34	59	83	94	186	0	1508
(1)	12.33	2.32	1.46	2.39	3.98	5.50	11.87	11.34	12.60	4.05	1.92	2.25	3.91	5.50	6.23	12.33	0.00	100.00
(2)	12.33	2.32	1.46	2.39	3.98	5.50	11.87	11.34	12.60	4.05	1.92	2.25	3.91	5.50	6.23	12.33	0.00	100.00

(1)=PERCENT OF ALL GOOD OBSERVATIONS FOR THIS PAGE

(2)=PERCENT OF ALL GOOD OBSERVATIONS FOR THIS PERIOD

C= CALM (WIND SPEED LESS THAN OR EQUAL TO .60 MPH)

TABLE 6
VERMONT YANKEE
QUARTERLY AVERAGE X/Q, D/Q AND GAMMA X/Q
VALUES FOR SELECTED RECEPTORS

POINT OF INTEREST		FIRST QUARTER		SECOND QUARTER	
A. Maximum offsite ground level air concentration location	Location:	S 3864 meters		Location:	WNW 2415 meters
	X/Q (undepleted)*:	4.2E-07		X/Q (undepleted):	5.3E-07
	X/Q (depleted)*:	4.2E-07		X/Q (depleted):	5.2E-07
	D/Q**:	2.1E-09		D/Q:	1.3E-09
	Gamma X/Q*:	2.1E-07		Gamma X/Q:	2.5E-07
B. For whole body and skin doses from noble gases					
1) Maximum site boundary location	Location:	S 400 meters		Location:	S 400 meters
	X/Q (undepleted):	1.4E-09		X/Q (undepleted):	2.4E-09
	X/Q (depleted):	1.4E-09		X/Q (depleted):	2.4E-09
	D/Q:	2.3E-11		D/Q:	7.8E-12
	Gamma X/Q:	7.3E-07		Gamma X/Q:	5.5E-07
2) Maximum nearest residence	Location:	S 550 meters		Location:	S 550 meters
	X/Q (undepleted):	1.6E-09		X/Q (undepleted):	5.2E-09
	X/Q (depleted):	1.6E-09		X/Q (depleted):	5.2E-09
	D/Q:	2.1E-11		D/Q:	2.1E-11
	Gamma X/Q:	5.3E-07		Gamma X/Q:	4.0E-07

POINT OF INTEREST		FIRST QUARTER	SECOND QUARTER
C. For organ doses from iodine and particulates in gaseous effluents			
1) Maximum farm location	Location:	SSE 5600 meters	Location: WNW 3000 meters
	X/Q (undepleted):	3.0E-07	X/Q (undepleted): 3.9E-07
	X/Q (depleted):	3.0E-07	X/Q (depleted): 3.8E-07
	D/Q:	1.8E-09	D/Q: 9.1E-10
2) Maximum nearest residence	Gamma X/Q:	1.9E-07	Gamma X/Q: 1.9E-07
	Location:	SSE 2100 meters	Location: SSE 2100 meters
	X/Q (undepleted):	1.2E-07	X/Q (undepleted): 4.6E-08
	X/Q (depleted):	1.2E-07	X/Q (depleted): 4.6E-08
3) Maximum site boundary location	D/Q:	1.1E-09	D/Q: 2.9E-10
	Gamma X/Q:	3.0E-07	Gamma X/Q: 1.5E-07
	Location:	SSE 850 meters	Location: SSE 850 meters
	X/Q (undepleted):	1.7E-08	X/Q (undepleted): 2.0E-08
	X/Q (depleted):	1.7E-08	X/Q (depleted): 2.0E-08
	D/Q:	1.6E-10	D/Q: 1.5E-10
	Gamma X/Q:	5.5E-07	Gamma X/Q: 2.8E-07

* Depleted and undepleted X/Qs and Gamma X/Q are in units of sec/m^3

** Delta (D/Q) in units of $1/\text{m}^2$

TABLE 7
SUMMARY OF RADIOLOGICAL IMPACT ON MAN
Vermont Yankee Nuclear Power Station
First and Second Quarters, 1983

POTENTIAL PATHWAY OR TYPE OF EXPOSURE	ESTIMATED FIRST QUARTER DOSE COMMITMENT	ESTIMATED SECOND QUARTER DOSE COMMITMENT
I. Maximum individual whole body and critical organ doses from receiving-water exposure pathways from liquid releases (mrem).	No liquid releases	No liquid releases
II.		
A. Whole body and skin doses to individuals exposed at point of maximum offsite ground level air concentration of radioactive noble gaseous effluents	(at S, 3864 meters)	(at WNW, 2415 meters)
i. Skin (mrem)	5.0E-02	1.4E-02
ii. Whole body (mrem)	2.3E-02	5.0E-03
B. Whole body and skin doses at maximum site boundary location from radioactive noble gaseous effluents	(at S, 400 meters)	(at S, 400 meters)
i. Skin (mrem)	7.8E-02	1.2E-02
ii. Whole body (mrem)	7.8E-02	1.2E-02
C. Whole body and skin doses at maximum nearest residence from radioactive noble gaseous effluents.	(at S, 550 meters)	(at S, 550 meters)
i. Skin (mrem)	4.0E-02	6.0E-03
ii. Whole body (mrem)	4.0E-02	5.0E-03

TABLE 7 (continued)

POTENTIAL PATHWAY OR TYPE OF EXPOSURE	ESTIMATED FIRST QUARTER DOSE COMMITMENT	ESTIMATED SECOND QUARTER DOSE COMMITMENT
III. Organ doses to individuals from radioactive iodine and particulates in gaseous effluents (including tritium).		
A. Maximum farm location		
Maximum individual whole body and organ doses from all pathways	(at SSE, 5600 meters)	(at WNW, 3000 meters)
i. Bone (mrem)	1.1E-03 (child)	9.3E-04 (child)
ii. Thyroid (mrem)	1.3E-03 (child)	9.5E-04 (child)
iii. GI(LLI) (mrem)	1.4E-03 (child)	9.4E-04 (child)
iv. Whole body (mrem)	1.4E-03 (child)	9.4E-04 (child)
B. Critical organ doses to maximum nearest resident from the inhalation, ingestion and ground plane exposure of iodine and particulates		
	(at SSE, 2100 meters)	(at SSE, 2100 meters)
i. Bone (mrem)	6.4E-04 (child)	2.8E-04 (child)
ii. Thyroid (mrem)	6.9E-04 (child)	2.5E-04 (child)
iii. GI(LLI) (mrem)	7.2E-04 (child)	2.7E-04 (child)
iv. Whole body as critical organ (mrem)	7.1E-04 (child)	2.7E-04 (child)

POTENTIAL PATHWAY OR TYPE OF EXPOSURE	ESTIMATED FIRST QUARTER DOSE COMMITMENT	ESTIMATED SECOND QUARTER DOSE COMMITMENT
C. Organ doses to individuals at point of maximum ground level air concentration of gaseous effluents from inhalation and ground exposure of iodine and particulates	(at S, 3864 meters)	(at WNW, 2415 meters)
i. Bone (mrem)	1.1E-03 (all)	1.1E-03 (all)
ii. Thyroid (mrem)	1.2E-03 (all)	1.1E-03 (all)
iii. GI(LLI) (mrem)	1.2E-03 (all)	1.1E-03 (all)
iv. Whole body as critical organ (mrem)	1.2E-03 (all)	1.1E-03 (all)
D. Organ doses to individuals at point of maximum site boundary air concentration of gaseous effluents from inhalation and ground exposure of iodine and particulates	(at SSE, 850 meters)	(at SSE, 850 meters)
i. Bone (mrem)	8.1E-05 (all)	1.3E-04 (all)
ii. Thyroid (mrem)	8.7E-05 (child, teen)	1.3E-04 (all)
iii. GI(LLI) (mrem)	8.5E-05 (child, teen, adult)	1.3E-04 (all)
iv. Whole body as critical organ (mrem)	8.5E-05 (teen, adult)	1.3E-04 (all)

TABLE 7 (continued)

POTENTIAL PATHWAY OR TYPE OF EXPOSURE	ESTIMATED FIRST QUARTER DOSE COMMITMENT	ESTIMATED SECOND QUARTER DOSE COMMITMENT
IV. Whole body doses to individuals and populations in unrestricted areas from <u>direct</u> radiation from the facility.		
A. Maximum site boundary (mrem) (west of turbine building)	2.2E+00	3.0E-01
B. Population dose (person-rem)	1.4E-02	1.7E-03
V. Whole body dose to the population from all receiving-water related pathways from liquid releases. (person-rem).	No liquid releases	No liquid releases

TABLE 7 (CONTINUED)

POTENTIAL PATHWAY OR TYPE OF EXPOSURE	ESTIMATED FIRST QUARTER DOSE COMMITMENT	ESTIMATED SECOND QUARTER DOSE COMMITMENT
VI.		
A. Whole body doses to the population and average individual out to 50 miles from noble gaseous effluents		
i. Whole body dose to population (person-rem)	6.1E-01	1.3E-01
ii. Average individual whole body dose (mrem)	4.0E-04	8.5E-05
iii. Skin dose to population (person-rem)	1.4E+00	3.2E-01
iv. Average individual skin dose (mrem)	9.2E-04	2.1E-04
B. Organ doses to 50 mile population, and average individual, from inhalation, ingestion of milk, meat, and vegetables, and ground exposure to iodine and particulates in gaseous effluents		
i. Thyroid population dose (person-rem)	1.7E-02	1.8E-02
ii. Average individual thyroid dose (mrem)	1.1E-05	1.2E-05
iii. Whole body population dose (person-rem)	1.7E-02	1.8E-02
iv. Average individual whole body dose (mrem)	1.1E-05	1.2E-05

APPENDIX A
EFFLUENT AND WASTE DISPOSAL SEMIANNUAL REPORT

Supplemental Information
January - June 1983

Facility: Vermont Yankee Nuclear Power Station

Licensee: Vermont Yankee Nuclear Power Corporation

1. Regulatory Limits

- a. Fission and activation gases: $0.08/\bar{E}_Y$ Ci/sec
- b. Iodines: $0.48 \mu\text{Ci/sec}$
- c. Particulates, half-lives > 8 days: $1.6\text{E}+3 \text{ MPC}_a \mu\text{Ci/sec}$
- d. Liquid effluents: $1 \times 10^{-7} \mu\text{Ci/ml}$
(HTO: $3 \times 10^{-3} \mu\text{Ci/ml}$, dissolved noble
gases: $4 \times 10^{-5} \mu\text{Ci/ml}$) Isotopic limits are
found in 10CFR20, App. B, Table II, Column 2.

2. Maximum Permissible Concentrations

Provided below are the MPC's used in determining allowable release rates or concentrations.

- a. Fission and activation gases: No MPC limits
- b. Iodines: No MPC limits
- c. Particulates, half-lives > 8 days: See 10CFR20, App. B, Table II, Column 1.
- d. Liquid effluents: See 10CFR20, App. B, Table II, Column 2.

3. Average Energy

Provided below are the average energy (\bar{E}) of the radionuclide mixture in releases of fission and activation gases, if applicable.

- a. Average gamma energy: 1st Quarter 0.76 Mev/dis
2nd Quarter 0.13 Mev/dis
- b. Average beta energy: Not Applicable

4. Measurements and Approximations of Total Radioactivity

Provided below are the methods used to measure or approximate the total radioactivity in effluents and the methods used to determine radionuclide composition.

a. Fission and Activation Gases

Daily samples are drawn at the discharge of the air ejector. Isotopic breakdown of the releases are determined from these samples. A logarithmic chart of the stack gas monitor is read daily to determine the gross release rate. At the very low release rates normally encountered during operation with the augmented off-gas system the error of release rates may be approximately ± 100 .

b. Iodines

Continuous isokinetic samples are drawn from the plant stack through a particulate filter and charcoal cartridge. The filters and cartridge are removed weekly (if releases are less than 4 of the Tech Spec limit), or daily (if they are greater than 4 of the limit), and are analyzed for radioiodine 131, 132, 133, 134, and 135. The iodines found on the filter are added to those on the charcoal cartridge. The error involved in these steps may be approximately ± 50 .

c. Particulates

- The particulate filters described in b. above are also counted for particulate radioactivity. The error involved in this sample is also approximately ± 50 .

d. Liquid Effluents

Radioactive liquid effluents released from the facility are continuously monitored. Measurements are also made on a representative sample of each batch of radioactive liquid effluents released. For each batch, station records are retained of the total activity (mCi) released, concentration ($\mu\text{Ci/ml}$) of gross radioactivity, volume (liters), and approximate total quantity of water (liters) used to dilute the liquid effluent prior to release to the Connecticut River.

Each batch of radioactive liquid effluent released is analyzed for gross gamma and gamma isotopic radioactivity. A monthly proportional composite sample, comprising an aliquot of each batch released during a month, is also analyzed for tritium, SR-89, SR-90, gross beta and gross alpha radioactivity, in addition to gamma spectroscopy.

There were no liquid releases during the reporting period.

5. Batch Releases

a. Liquid

There were no routine liquid batch releases during the reporting period.

b. Gaseous

There were no routine gaseous batch releases during the reporting period.

6. Abnormal Releases

a. Liquid

There were no non-routine liquid releases during the reporting period.

b. Gaseous

There were no non-routine gaseous releases during the reporting period.