

7012

J. M. FARLEY NUCLEAR PLANT
PRODUCTION DEPARTMENT DOCUMENT CONTROL
DOCUMENT TRANSMITTAL FORM
FOR DOCUMENTS TRANSMITTED TO DIRECTOR NRR (DOCKET NOS 50-348 & 50-364)
DATE 830804

DOCUMENT NUMBER	REVISION NUMBER	COPY	DOCUMENT CATEGORY
FN-P-0-EIP-026	6	53	H6. 17
FN-P-0-EIP-026	6	54	H6. 17
FN-P-0-EIP-026	6	55	H6. 17

INSTRUCTIONS TO THE ADDRESSEE

- (1) VERIFY THE DOCUMENTS RECEIVED AGREE WITH THE ABOVE DESCRIPTION
- (2) INCORPORATE THE TRANSMITTED DOCUMENTS INTO YOUR FILES
- (3) DOCUMENTS OR PORTIONS OF DOCUMENTS WHICH ARE SUPERCEDED BY THE ABOVE MUST BE DESTROYED
- (4) SIGN IN THE SPACE BELOW INDICATING THAT YOU COMPLETED THESE INSTRUCTIONS AND RETURN THIS FORM TO THE DOCUMENT CONTROL SUPERVISOR

SIGNATURE OF ADDRESSEE

8309150441 830907
PDR ADDCK 05000348
PDR

VOLUME 14

FNP-0-EIP-26
August 1, 1983
Revision 6

FARLEY NUCLEAR PLANT
EMERGENCY PLAN IMPLEMENTING PROCEDURE
FNP-0-EIP-26

OFFSITE NOTIFICATION

S
A
F
E
T
Y

R
E
L
A
T
E
D

Approved:

W. S. Hunt
Plant Manager

Date Issued: 8-4-83

<u>List-of-Effective-Page</u>	
<u>Page</u>	<u>Rev.</u>
1,2,3	4
4-8	5
9-12	0
13	6
Tbl. 1	3
App. A,B	0
Fig. 1	6

Diskette EIP-2

DOCUMENT CONTROL
CONTROLLED COPY
DO NOT REPRODUCE
COPY NO. 054

OFFSITE NOTIFICATION

1.0 Purpose

The purpose of this procedure is to outline the responsibilities of plant officials in notifying offsite authorities concerning various events at Farley Nuclear Plant.

2.0 References

- 2.1 Joseph M. Farley Nuclear Plant Emergency Plan
- 2.2 FNP-0-EIP-2 Duties of the Shift Supervisor
- 2.3 FNP-0-EIP-3 Duties of the Emergency Director
- 2.4 FNP-0-EIP-8 Notification Roster
- 2.5 FNP-0-EIP-11 Handling of Injured Personnel
- 2.6 FNP-0-EIP-12 Alert
- 2.7 FNP-0-EIP-13 Fire Emergencies
- 2.8 FNP-0-EIP-17 Notification of Unusual Event
- 2.9 FNP-0-EIP-18 Site Area Emergency
- 2.10 FNP-0-EIP-19 General Emergency
- 2.11 10CFR50.72
- 2.12 FNP-0-AP-60 Oil Spill Prevention Control and Countermeasure Plan

3.0 General

In the event of certain occurrences at Farley Nuclear Plant, several offsite authorities must be notified. It is the responsibility of plant officials to make the notification to the appropriate authorities. The plant officials responsible for official notifications are:

- 3.1 Shift Supervisor
- 3.2 Emergency Director
- 3.3 Security Supervisor

NOTE: As a general rule, notification of offsite support groups will be at the Emergency Director's discretion.

NOTE: Appendices A and B, Upper Management Reporting and NRC Prompt Notification Requirements respectively, are included to summarize the notification requirements of APCo Management Procedures and 10CFR Part 50 Section 50.72, respectively. All the events requiring notifications in the appendices are also included in sections 5.1 through 5.10.

NOTE: The attached checklist (Figure 1) may be used for guidance in making reports to the NRC Operations Center. It is not intended that the checklist be completed prior to, or as a condition of, making a notification. Instead, the list is intended to describe the types of information about events that have been useful to the NRC.

4.0 Notification Means

- 4.1 The NRC regional office shall preferably be contacted by use of the NRC Ring Down Communication Line (Red Phone) for notifications required within one hour of the occurrence of the event. If the Red Phone is not functional, notify the NRC regional office by commercial telephone number (202)951-0550 or use FNP-0-EIP-8 to obtain appropriate telephone numbers.
- 4.2 The Alabama Division of Radiological Health shall be notified by commercial telephone service using FNP-0-EIP-8 to obtain appropriate telephone numbers. The Emergency Notification Network shall be used for initial notification only in the event of a General Emergency. The ENN may be used by offsite authorities to authenticate notifications. It may be used for subsequent transmission of information after the initial notification has been accomplished.
- 4.3 Necessary telephone numbers for offsite agencies, support groups, and plant employees are contained in FNP-0-EIP-8 and in the Plant Call List which is attached to EIP-8.

5.0 Notification Requirements of Abnormal Occurrences

<u>Occurrence</u>	<u>Para. No.</u>
Alert EIP-12	5.3

Rev. 4

Environmental Incident	5.8.10, 5.12
Events Causing Media Interest	5.9.3
Fire Emergency EIP-13	5.4
General Emergency EIP-19	5.7
Licensed Material Incident	5.8.9
Loss of Red Phone Operability	5.1
Nonlicensed Material Incident	5.8.8
Notification of Unusual Event EIP-17	5.5
Personnel Emergency EIP-11	5.2
Personnel Error or Procedural Inadequacy Causing a Compromise of a Safety Function	5.8.3
Radiation Contamination	5.8.6
Radiation Release, Accidental	5.8.5
Reactor Trip or Safety Injection	5.8.4
Security Related Incidents	5.10
Site Area Emergency EIP-18	5.6
Strikes by Employees	5.8.7
Technical Specifications, Event Causing Shutdown	5.8.2 and 5.9.1
Technical Specifications, Exceeding Safety Limit	5.8.1
Technical Specifications, Prompt Reporting	5.8.11
Unscheduled Shutdowns or Power Reductions	5.9.2
Other Events of Possible Concern To Upper Management	5.9.4
5.1 Loss of NRC Ring-Down Communication Line (Red Phone)	
Upon loss of the NRC Ring-Down Communication Line (red phone), the Shift Supervisor shall immediately notify the NRC by commercial telephone number (202)951-0550 or relayed message.	

5.2 Notification Requirements for a Handling of Injured Personnel Emergency (EIP-11)

5.2.1 The Shift Supervisor shall notify:

- *5.2.1.1 an ambulance service and CSC to escort the ambulance.
- 5.2.1.2 the Southeast Alabama Medical Center (SAMC)
- 5.2.1.3 an Alabama Power Company Doctor
- 5.2.1.4 the Emergency Director

5.2.2 The Emergency Director shall notify:

- 5.2.2.1 the Emergency Coordinator
- 5.2.2.2 the Alabama Division of Radiological Health if a radiation casualty is transported to an offsite medical facility.
- 5.2.2.3 the NRC, if the injury in the judgement of the licensee representative will require admission of the injured individual to a hospital for treatment or observation for an extended period of time (greater than 48 hours). Injuries that only require treatment and/or medical observation at a hospital or offsite medical facility, but do not meet the conditions specified above, are not required to be reported.
- *5.2.2.4 Medical Transportation units for possible transfer of personnel to the RCTF or ORAU

*Shall be notified as deemed necessary.

*5.2.2.5 the Oak Ridge Associated Universities (ORAU)

5.3 Notification Requirements for an Alert (EIP-12)

5.3.1 The Shift Supervisor shall notify:

5.3.1.1 the Central Security Control

5.3.1.2 the Emergency Director

5.3.2 The Emergency Director shall notify:

5.3.2.1 The necessary portions of the plant emergency organization by providing instructions for the Administrative Aide.

5.3.2.2 The Emergency Coordinator

5.3.2.3 The NRC

5.3.2.4 The State of Alabama

*5.3.3 Security shall notify the EOD at Fort Rucker if decided necessary by the Emergency Director.

5.4 Notification Requirements for a Fire Emergency (EIP-13)

5.4.1 The Shift Supervisor shall notify:

*5.4.1.1 the Dothan Fire Department (DFD)

a. Place call to DFD and hang up.

b. Wait for DFD to return call.

c. Summon DFD, if needed.

*Shall be notified as deemed necessary

Rev. 5

- 5.4.1.2 the Emergency Director
- 5.4.1.3 the Plant Fire Marshal
- 5.4.1.4 if outside agencies are called in for assistance, notify Central Security Control.
- 5.4.2 The Emergency Director shall notify:
 - 5.4.2.1 the Administrative Aide
 - 5.4.2.2 the Emergency Coordinator
 - 5.4.2.3 the NRC
 - 5.4.2.4 the State of Alabama
- 5.5 Notification Requirements for a Notification of Unusual Event (EIP-17).
 - 5.5.1 The Shift Supervisor shall notify:
 - 5.5.1.1 Central Security Control if the emergency involves plant security threats
 - 5.5.1.2 the Emergency Director
 - 5.5.2 The Emergency Director shall notify:
 - 5.5.2.1 The necessary portions of the plant emergency organization by providing instructions for the Administrative Aide.
 - 5.5.2.2 the Emergency Coordinator
 - 5.5.2.3 the NRC

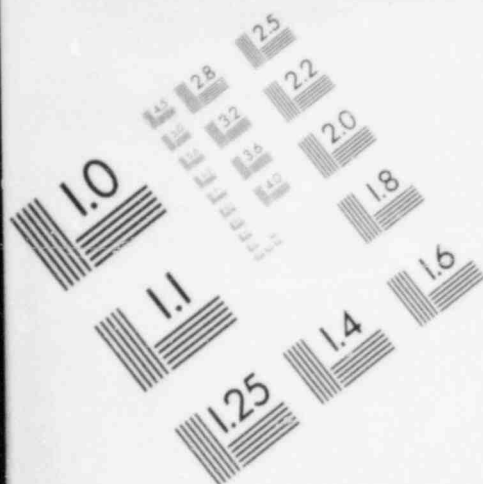
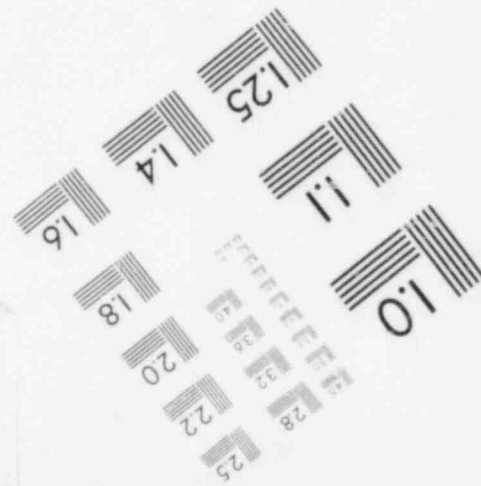
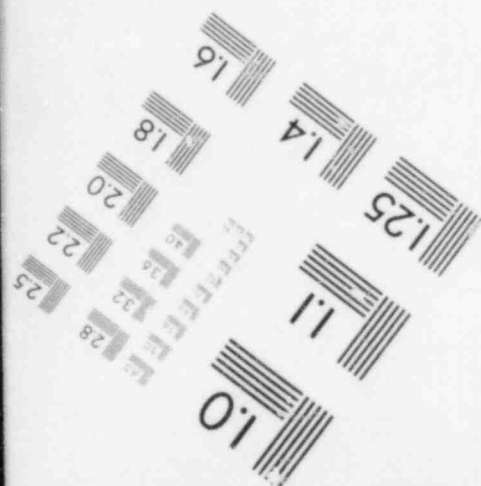
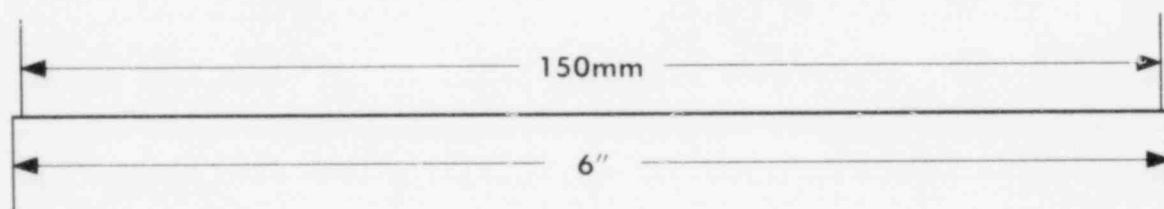
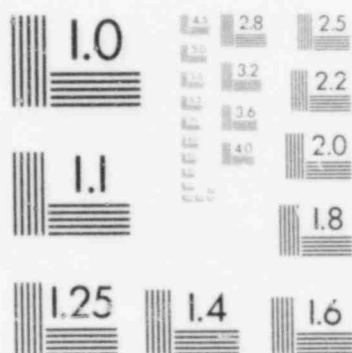
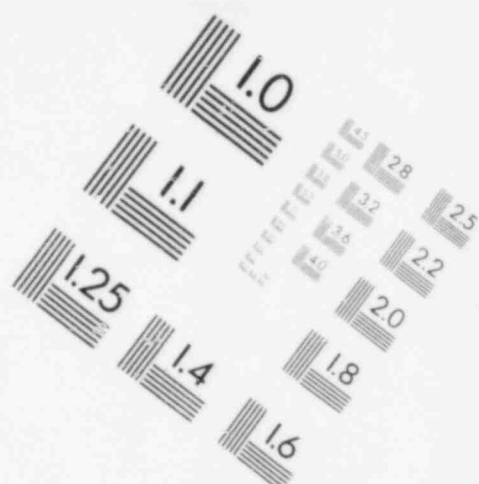


IMAGE EVALUATION
TEST TARGET (MT-3)



5.6 Notification Requirements for a Site Area Emergency
(EIP-18)

5.6.1 The Shift Supervisor shall notify:

5.6.1.1 Central Security Control if
the emergency involves plant
security threats

5.6.1.2 the Emergency Director

5.6.2 The Emergency Director shall notify:

5.6.2.1 the necessary portions of the
plant emergency organization
by providing instructions for
the Administrative Aide

5.6.2.2 the Emergency Coordinator

5.6.2.3 The NRC

5.6.2.4 The State of Alabama

*5.6.2.5 the Savannah River Operations
Office (SROO) through the
State of Alabama if their
assistance is needed to protect
the health and safety of the
public.

*5.6.3 Security shall notify the EOD at Fort
Rucker if decided necessary by the
Emergency Director.

5.7 Notification Requirements for a General Emergency
(EIP-19)

5.7.1 The Shift Supervisor shall notify:

5.7.1.1 the Emergency Director

5.7.1.2 if the Emergency Director is
not immediately available and
the dose estimate from EIP-9
meets the criteria of section
3.2.1 of EIP-19, notify:

*Shall be notified as deemed necessary

Rev. 5

- 5.7.1.2.1 the State of Alabama
- 5.7.1.2.2 local offsite governmental agencies
- 5.7.1.3 Central Security Control if the emergency involves loss of plant security.
- 5.7.2 The Emergency Director shall notify:
 - 5.7.2.1 the necessary portions of the plant emergency organization by providing instructions for the Administrative Aide
 - 5.7.2.2 the Emergency Coordinator
 - 5.7.2.3 the NRC
 - 5.7.2.4 the State of Alabama
 - 5.7.2.5 the Savannah River Operations Office (SROO) if their assistance is needed to protect the health and safety of the public
- 5.8 The NRC Operations Center and the Emergency Coordinator shall be contacted by the Shift Supervisor or the Emergency Director as soon as possible and in all cases within one hour by telephone of the occurrence of any of the following significant events and shall identify that event as being reported pursuant to section 10CFR50.72:
 - 5.8.1 The exceeding of any Technical Specification Safety limit. In addition, an open and continuous channel shall be established and maintained with the NRC Operations Center and shall be closed only when notified by the NRC. This notification shall be confirmed by telegraph, mailgram, or facsimile transmission in accordance with section 6.9 of the Technical Specifications.

- 5.8.2 Any event requiring initiation of shutdown of the nuclear power plant in accordance with Technical Specification Limiting Conditions for Operation.
- 5.8.3 Personnel error or procedural inadequacy which, during normal operations, anticipated operational occurrences, or accident conditions, prevents or could prevent, by itself, the fulfillment of the safety function of those structures, systems, and components important to safety that are needed to (i) shutdown the reactor safely and maintain it in a safe shutdown condition, or (ii) remove residual heat following reactor shutdown, or (iii) limit the release of radioactive material to acceptable levels or reduce the potential for such release.
- 5.8.4 Any event resulting in manual or automatic actuation of Engineered Safety Features, including the Reactor Protection System (Reactor Trip or Safety Injection). Actuation of Engineered Safety Features including the Reactor Protection System which result from and are part of the planned sequence during surveillance testing does not constitute an event reportable under this item.
- 5.8.5 Any accidental, unplanned, or uncontrolled radioactive release. (Normal or expected releases from maintenance or other operational activities are not included.) This notification shall be confirmed by telegraph, mailgram, or facsimile transmission in accordance with section 6.9 of the Technical Specifications.
- 5.8.6 Any serious personnel radioactive contamination requiring extensive onsite decontamination or outside assistance. This notification shall be confirmed by telegraph, mailgram, or facsimile transmission in accordance with section 6.9 of the Technical Specifications.
- 5.8.7 Strikes of operating employees or security guards, or honoring of picket lines by these employees.

Rev. 0

5.8.8 Any incident involving byproduct, source, or special nuclear material possessed by him and which may have caused or threatens to cause:

- (a) Exposure of the whole body of any individual to 25 rems or more of radiation; exposure of the skin of the whole body of any individual of 150 rems or more of radiation; or exposure of the feet, ankles, hands or forearms of any individual to 375 rems or more of radiation; or
- (b) The release of radioactive material in concentrations which, if averaged over a period of 24 hours, would exceed 5,000 times the limits specified for such materials in 10CFR20 Appendix B, Table II; or
- (c) A loss of one working week or more of the operation of any facilities affected; or
- (d) Damage to property in excess of \$200,000.

5.8.9 Any incident involving licensed material possessed by him and which may have caused or threatens to cause:

- (a) Exposure of the whole body of any individual to 5 rems or more of radiation; exposure of the skin of the whole body of any individual to 30 rems or more of radiation; or exposure of the feet, ankles, hands, or forearms to 75 rems or more of radiation; or
- (b) The release of radioactive material in concentrations which, if averaged over a period of 24 hours, would exceed 500 times the limits specified for such materials in 10CFR20 Appendix B, Table II; or
- (c) A loss of one day or more of the operation of any facilities affected; or
- (d) Damage to property in excess of \$2,000.

Rev. 0

- 5.8.10 Any event that results in the nuclear power plant not being in a controlled or expected condition while operating or shutdown. This notification shall be confirmed by telegraph, mailgram, or facsimile transmission in accordance with section 6.9 of the Technical Specifications.

5.9 Additional Emergency Coordinator Notifications

To insure that the appropriate company upper management positions receive timely reports concerning unusual significant events, the guidelines listed below shall be used.

The Shift Supervisor (unless specifically relieved of such responsibility on an event-by-event basis by the Plant Manager or his alternate who is designated at the time as the on-call Emergency Director) shall verbally report the following events to the on-call Emergency Coordinator:

- 5.9.1 "Limiting conditions of operations" (LCO's) as contained in the Technical Specifications that could require unit shutdowns within the next twelve (12) hours.
 - 5.9.2 Unscheduled shutdowns or power reductions to below 30%.
 - 5.9.3 Events of high public or news media interest.
 - 5.9.4 Other events that are not exactly specified above but which are considered at the time of their occurrence to be of possible concern to upper management.
- 5.10 Notification requirements for all the security contingency events are given in Table I.
 - 5.11 The Director of the NRC Regional Office shall be notified within 24 hours, by commercial telephone, confirmed by telegraph, mailgram, or facsimile transmission, upon occurrence of any event listed below:
 - 5.11.1 Failure of the reactor protection system or other systems subject to limiting safety system settings to initiate the required protective function by the time a monitored parameter reaches the setpoint

Rev. 0

specified as the limiting safety system setting in the technical specifications or failure to complete the required protective function.

- 5.11.2 Abnormal degradation discovered in fuel cladding, reactor coolant pressure boundary, or primary containment.
 - 5.11.3 Failure or malfunction of one or more components which prevents or could prevent, by itself, the fulfillment of the functional requirements of system(s) used to cope with accidents analyzed in the SAR.
 - 5.11.4 Errors discovered in the transient or accident analyses or in the methods used for such analyses as described in the safety analysis report or in the bases for the technical specification that have or could have permitted reactor operation in a manner less conservative than assumed in the analyses.
 - 5.11.5 Performance of structures, systems, or components, that requires remedial action or corrective measures to prevent operation in a manner less conservative than assumed in the accident analyses in the safety analysis report or technical specifications bases; or discovery during plant life of conditions not specifically considered in the safety analysis report or technical specifications that require remedial action or corrective measures to prevent the existence or development of an unsafe condition.
- 5.12 The Director of the NRC Regional Office shall be notified within 24 hours, by commercial telephone, in the event that an unusual or important event occurs that causes a significant environmental impact from plant(s) operation, or that has high public or potential public interest concerning environmental impact from plant(s) operation.

NOTE: A written followup report to the NRC is due within 10 days of the event.

5.13 Other circumstances requiring NRC notification within 24 hours by commercial telephone.

5.13.1 Any failure of the reactor trip breakers UV trip attachment to open or close during functional testing or in service.

5.13.2 Failure of any reactor trip or bypass breaker, either in service or during testing.

TABLE I

NOTIFICATION REQUIREMENTS FOR INDIVIDUALS DURING SECURITY CONTINGENCY EVENTS

NOTE: Any security related act or occurrence that threatens the safety of the FNP site personnel, or the security of special nuclear material shall be reported to the USNRC Operations Center immediately and, in all cases, within one hour by telephone, of the event occurrence. The term "Security Related" used herein refers to an event or incident that is perpetrated or caused by an unauthorized or authorized individual with intent or premeditated design to perpetrate or facilitate an act of sabotage. In all such cases, the event occurrence must be reported to the USNRC immediately. Conversely, an event occurrence caused by a plant employee or authorized person simply failing to comply with security procedures, e.g. failing to notify security prior to entering or exiting an alarmed security door, failure to properly lock a security door, minor mechanical or electrical failure of security systems, or an internal disturbance such that it has no adverse effect on vital plant systems or the safe operation of the plant, is not per se a reportable occurrence, and will be handled administratively with a Plant Security Incident Report. Significant Contingency Plan events that require reporting to the USNRC are summarized below:

<u>EVENT NO.</u>	<u>DESCRIPTION</u>	<u>SHIFT SUPERVISOR</u>	<u>EMERGENCY DIRECTOR (E.D.)</u>	<u>SECURITY SUPERVISOR</u>
1	Bomb Threat	Notify E.D. and Security Foreman	Notify NRC Operations Center via the Emergency Notification System (ENS) or commercial telephone if ENS is inoperative- immediately and in all cases within one hour.	
2	Attack Threat	Notify E.D. and Security Foreman	Notify NRC Operations Center via the Emergency Notification System (ENS) or commercial telephone if ENS is inoperative- immediately and in all cases within one hour.	
3	Civil Disturbance	Notify E.D.	Notify NRC Operations Center via the Emergency Notification System (ENS) or commercial telephone if ENS is inoperative- immediately and in all cases within one hour - if security related or could adversely	

<u>EVENT NO.</u>	<u>DESCRIPTION</u>	<u>SHIFT SUPERVISOR</u>	<u>EMERGENCY DIRECTOR (E.D.)</u>	<u>SECURITY SUPERVISOR</u>
			affect plant security. Request LLEA notification if needed.	
4	Perimeter Intrusion Alarm Annunciates in CAS	Notify E.D. if security related	Notify NRC Operations Center via the Emergency Notification System (ENS) or commercial telephone if ENS is inoperative- immediately and in all cases within one hour - if event is security related.	
5	Visual Observation of Unidentified Person at or within Protected Area	Notify E.D. if security related	Notify NRC Operations Center via the Emergency Notification System (ENS) or commercial telephone if ENS is inoperative- immediately and in all cases within one hour - if event is security related and individual is unauthorized.	
6	Discovery of Breach of Protected Area Barrier	Notify E.D. if equip. found damaged or disturbed or is security related	Notify NRC Operations Center via the Emergency Notification System (ENS) or commercial telephone if ENS is inoperative- immediately and in all cases within one hour - if event is security related.	
7	Confirmed Protected Area Intrusion	Notify E.D.	a. Request LLEA notification if needed b. Notify NRC Operations Center via the Emergency Notification System (ENS) or commercial telephone if ENS is inoperative- immediately and in all cases within one hour - if intrusion	

<u>EVENT NO.</u>	<u>DESCRIPTION</u>	<u>SHIFT SUPERVISOR</u>	<u>EMERGENCY DIRECTOR (E.D.)</u>	<u>SECURITY SUPERVISOR</u>
------------------	--------------------	-------------------------	----------------------------------	----------------------------

is by an unauthorized individual or an obvious attempt to sabotage.

8	Vital Area Intrusion Alarm	Notify NRC Operations Center via the Emergency Notification System (ENS) or commercial telephone if ENS is inoperative - immediately and in all cases within one hour - if intrusion is by an unauthorized individual or an obvious attempt to sabotage.		
---	----------------------------	--	--	--

9	Visual observation of unidentified or unauthorized person entering or within Vital Area	Notify E.D.	Notify NRC Operations Center via the Emergency Notification System (ENS) or commercial telephone if ENS is inoperative - immediately and in all cases within one hour - if individual is unauthorized, intruder, or saboteur.	
---	---	-------------	---	--

10	Vital Area Found Unlocked and Unattended or Vital Area found breached	Notify E.D.	Notify NRC Operations Center via the Emergency Notification System (ENS) or commercial telephone if ENS is inoperative - immediately and in all cases within one hour - if investigation discloses event is security related and was not a result of authorized person failing to comply with security procedures.	
----	---	-------------	--	--

11	Member of Security Force fails to perform duty	Notify NRC Operations Center via the Emergency Notification		
----	--	---	--	--

<u>EVENT NO.</u>	<u>DESCRIPTION</u>	<u>SHIFT SUPERVISOR</u>	<u>EMERGENCY DIRECTOR (E.D.)</u>	<u>SECURITY SUPERVISOR</u>
		System (ENS) or commercial telephone if ENS is inoperative - immediately and in all cases within one hour - if event is security related, or caused by an adversary and degraded the plant security posture.		
12	Suspected Bomb or Sabotage Device Discovered	Notify E.D. if confirmed	<ul style="list-style-type: none"> a. Evaluate need for E.O.D. notification b. Notify NRC Operations Center via the Emergency Notification System (ENS) or commercial telephone if ENS is inoperative - immediately and in all cases within one hour. 	
13	Fire, Explosion or other catastrophe	Notify E.D.	Notify NRC Operations Center via the Emergency Notification System (ENS) or commercial telephone if ENS is inoperative - immediately and in all cases within one hour - if event is significant, or security related.	
14	Internal disturbance	Notify E.D. if vital equip. could be affected	<ul style="list-style-type: none"> a. Evaluate need for LLEA notification b. Notify NRC Operations Center via the Emergency Notification System (ENS) or commercial telephone if ENS is inoperative - immediately and in all cases within one hour - if disturbance is determined to be uncontrollable, if it affects vital equipment, or is security related. 	

<u>EVENT NO.</u>	<u>DESCRIPTION</u>	<u>SHIFT SUPERVISOR</u>	<u>EMERGENCY DIRECTOR (E.D.)</u>	<u>SECURITY SUPERVISOR</u>
15	Multiple Loss of On-Site Communication Systems	Notify NRC Operations Center via the Emergency Notification System (ENS) or commercial telephone if ENS is inoperative - immediately and in all cases within one hour - if event is security related and resulted in a degradation of plant security.		
16	Multiple Loss of Off-Site Communication System	Notify E.D.	Notify NRC Operations Center via the Emergency Notification System (ENS) or commercial telephone if ENS is inoperative - immediately and in all cases within one hour - if cause is related to hostile or sabotage activities.	
17	Obvious Attempt to Sabotage or Confirmed Intrusion into Vital Areas in Progress	Notify E.D.	Notify NRC Operations Center via the Emergency Notification System (ENS) or commercial telephone if ENS is inoperative - immediately and in all cases within one hour.	
18	Sabotage device rendered inoperable, tampered or deranged. Equip. Restored. Intruder/Saboteur captured or escaped	Notify E.D.	Notify NRC Operations Center via the Emergency Notification System (ENS) or commercial telephone if ENS is inoperative - immediately and in all cases within one hour.	
19	Security Emergency	Notify E.D.	Notify NRC Operations Center via the Emergency Notification System (ENS) or commercial telephone if ENS is inoperative -	

<u>EVENT NO.</u>	<u>DESCRIPTION</u>	<u>SHIFT SUPERVISOR</u>	<u>EMERGENCY DIRECTOR (E.D.)</u>	<u>SECURITY SUPERVISOR</u>
			immediately and in all cases within one hour. Request notification to LLEA and Corporate Security.	
20	Security Alert	Notify E.D.	Notify NRC Operations Center via the Emergency Notification System (ENS) or commercial telephone if ENS is inoperative- immediately and in all cases within one hour - if event escalates to the point that a clear or imminent threat or danger to the plant is evident.	
21	Hostage Situations/Duress Code	a. Notify E.D. b. Notify LLEA	Notify NRC Operations Center via the Emergency Notification System (ENS) or commercial telephone if ENS is inoperative- immediately and in all cases within one hour.	
22	Extortion Situation		Notify NRC Operations Center via the Emergency Notification System (ENS) or commercial telephone if ENS is inoperative- immediately and in all cases within one hour.	<u>CORPORATE SECURITY MANAGER</u> a. Notify corporate management b. Notify E.D. c. Notify FBI or LLEA
23	Loss or Degradation of the Intrusion Detection or Alarm Annunciation Systems			<u>SECURITY SUPERVISOR</u> If cause of system outage is major or security related, notify NRC Operations Center via the Emergency Notification System (ENS) or commercial telephone if ENS is

<u>EVENT NO.</u>	<u>DESCRIPTION</u>	<u>SHIFT SUPERVISOR</u>	<u>EMERGENCY DIRECTOR (E.D.)</u>	<u>SECURITY SUPERVISOR</u>
				<p>inoperative-immediately and in all cases within one hour.</p> <p>If cause of system outage is major or security related, notify NRC Operations Center via the Emergency Notification System (ENS) or commercial telephone if ENS is inoperative-immediately and in all cases within one hour.</p>
24	Comprimise or degradation of Electrical/Mechanical Access Control Devise or Systems			
25	Compromise or degradation of tamper alarm on protected or vital area intrusion	<p>Notify NRC Operations Center via the Emergency Notification System (ENS) or commercial telephone if ENS is inoperative-immediately and in all cases within one hour - if event is security related.</p>		
26	Loss of Protected Area and Barrier Lighting	<p>Notify NRC Operations Center via the Emergency Notification System (ENS) or commercial telephone if ENS is inoperative-immediately and in all cases within one hour - if cause is major or security related.</p>		

<u>EVENT NO.</u>	<u>DESCRIPTION</u>	<u>SHIFT SUPERVISOR</u>	<u>EMERGENCY DIRECTOR (E.D.)</u>	<u>SECURITY SUPERVISOR</u>
27	loss or Degradation of the Security System Power	Notify NRC Operations Center via the Emergency Notification System (ENS) or commercial telephone if ENS is inoperative immediately and in all cases within one hour - if cause of primary system failure is major or security related.		
28	loss of Emergency Power	Notify NRC Operations Center via the Emergency Notification System (ENS) or commercial telephone if ENS is inoperative immediately and in all cases within one hour - if cause of emergency power system failure is major or security related.		

WRITTEN REPORT

Any event reported to the NRC Operations Center, under the provisions of this table will be followed by a written report required by 10CFR 73.71(c) to Region II with a copy to the Director of Inspection and Enforcement, USNRC, Washington, D.C., 20555, describing the event in detail. The Technical Group will be responsible for preparation of a written follow up report within 5 days of the time of the event discovery.

APPENDIX A

To insure that the appropriate company upper management positions receive timely reports concerning unusual significant events, the guidelines listed below shall be used.

The Shift Supervisor (unless specifically relieved of such responsibility on an event-by-event basis by the Plant Manager or his alternate who is designated at the time as the on-call Emergency Director) shall verbally report the following events to the on-call Emergency Coordinator:

PARAGRAPH

- | | | |
|----------------|----|---|
| See Appendix B | 1. | Any initiation of an event is outlined in Appendix B (taken from 10CFR50, paragraph 50.72). |
| 5.11 | 2. | Events in Technical Specification 6.9.1.8 requiring "prompt notification to the NRC." |
| 5.8.1 | 3. | "Limiting conditions of operations" (LCO's) as contained in the Technical Specifications that could require unit shutdowns within the next twelve (12) hours. |
| 5.9.2 | 4. | Unscheduled shutdowns or power reductions to below 30%. |
| 5.2 | 5. | Serious personnel injuries. |
| 5.9.4 | 6. | Events of high public or news media interest. |
| 5.9.4 | 7. | Other events that are not exactly specified above but which are considered at the time of their occurrence to be of possible concern to upper management. |

APPENDIX B

Subject: NRC Prompt Notification Requirement **

- (a) Each licensee of a nuclear power reactor licensed under § 50.21 or § 50.22 shall notify the NRC Operations Center as soon as possible and in all cases within one hour by telephone of the occurrence of any of the following significant events and shall identify that event as being reported pursuant to section 50.72:

PARAGRAPH

- | | |
|-----------------|--|
| 5.2 through 5.7 | (1) Any event requiring initiation of the licensee's emergency plan or any section of that plan. Notifications under this item refer to those initiating events or conditions that place the facility in a "Notification of Unusual Event" status. An unusual event indicates a potential degradation of the level of safety of the plant. |
| 5.8.1 | (2) The exceeding of any Technical Specification Safety limit. |
| 5.8.10 | (3) Any event that results in the nuclear power plant not being in a controlled or expected condition while operating or shutdown. |
| 5.10 | (4) Any act that threatens the safety of the nuclear power plant or site personnel, or the security of special nuclear material, including instances of sabotage or attempted sabotage. |
| 5.8.2
5.9.1 | (5) Any event requiring initiation of shutdown of the nuclear power plant in accordance with Technical Specification Limiting Conditions for Operation. |
| 5.8.3 | (6) Personnel error or procedural inadequacy which, during normal operations, anticipated operational occurrences, or accident conditions, prevents or could prevent, by itself, the fulfillment of the safety function of those structures, systems, and components important to safety that are needed to (i) shutdown the reactor safely and maintain it in a safe shutdown condition, or (ii) remove residual heat following reactor shutdown, or (iii) limit the release of radioactive material to acceptable levels or reduce the potential for such release. |

**NOTE: Use Figure 1 as a checklist when notifying the NRC. It contains the types of information required by the NRC. (See Section 3.0 of this procedure for further explanation).

PARAGRAPH

- 5.8.4 (7) Any event resulting in manual or automatic actuation of Engineered Safety Features, including the Reactor Protection System (Reactor Trip or Safety Injection). Actuation of Engineered Safety Features including the Reactor Protection System which result from and are part of the planned sequence during surveillance testing does not constitute an event reportable under this item.
- 5.8.5 (8) Any accidental, unplanned, or uncontrolled radioactive release. (Normal or expected releases from maintenance or other operational activities are not included.)
- 5.2 (9) Any fatality or serious injury occurring on the site and requiring transport to an offsite medical facility for treatment. Serious injury is considered to be any injury that in the judgment of the licensee representative will require admission of the injured individual to a hospital for treatment or observation for an extended period of time (greater than 48 hours). Injuries that only require treatment and/or medical observation at a hospital or offsite medical facility, but do not meet the conditions specified above, are not required to be reported.
- 5.8.6 (10) Any serious personnel radioactive contamination requiring extensive onsite decontamination or outside assistance.
- 5.8.7 (11) Strikes of operating employees or security guards, or honoring of picket lines by these employees.
- 5.8.8 (12) An incident involving byproduct, source, or special nuclear material possessed by him and which may have caused or threatens to cause:
- (a) Exposure of the whole body of any individual to 25 rems or more of radiation; exposure of the skin of the whole body of any individual of 150 rems or more of radiation; or exposure of the feet, ankles, hands or forearms of any individual to 375 rems or more of radiation; or

- (b) The release of radioactive material in concentrations which, if averaged over a period of 24 hours, would exceed 5,000 times the limits specified for such materials in 10CFR20 Appendix B, Table II; or
- (c) A loss of one working week or more of the operation of any facilities affected; or
- (d) Damage to property in excess of \$200,000.

5.3.9

(13) Any incident involving licensed material possessed by him and which may have caused or threatens to cause:

- (a) Exposure of the whole body of any individual to 5 rems or more of radiation; exposure of the skin of the whole body of any individual to 30 rems or more of radiation; or exposure of the feet, ankles, hands, or forearms to 75 rems or more of radiation; or
- (b) The release of radioactive material in concentrations which, if averaged over a period of 24 hours, would exceed 500 times the limits specified for such materials in 10CFR20 Appendix B, Table II; or
- (c) A loss of one day or more of the operation of any facilities affected; or
- (d) Damage to property in excess of \$2,000.

(b) With respect to the events reported under subparagraphs (1), (2), (3), and (4) of paragraph (a), each licensee, in addition to prompt telephone notification, shall also establish and maintain an open, continuous communication channel with the NRC Operations Center, and shall close this channel only when notified by NRC.

(c) The primary channel for telephone notification of significant events should be through the dedicated telephone line (Red Phone) established between the licensee and the NRC Operations Center. An NRC Duty Officer is available, 24 hours a day, in the NRC Operations Center. In case the licensee is unable to report a significant event over the dedicated telephone line, the licensee should contact the NRC Operations Center directly by commercial line.

FIGURE 1

EVENT NOTIFICATION	
TIME OF NOTIFICATION: _____	EVENT TIME AND ZONE: _____ NRC REGION: _____ Date: <u> </u> / <u> </u> / <u> </u> GET CALL BACK # _____
FACILITY OR ORGANIZATION: _____ CALLER'S NAME: _____	
EVENT CLASSIFICATION/REQUIRED NOTIFICATIONS	
1. <u> </u> ALERT RDO _____ 2. <u> </u> SITE AREA EMERGENCY EO _____ 3. <u> </u> GENERAL EMERGENCY NRR _____ RCT WILL MAKE ALL OTHER NOTIFICATIONS	6. <u> </u> TRANSPORTATION EVENT RDO _____ EO _____ DOE _____ DOT _____
4. <u> </u> PHYSICAL SECURITY/SAFEGUARDS RDO _____ EO _____ IAT _____ (EO & IAT NOT REQUIRED FOR SOME EVENTS)	7. <u> </u> 50.72 (NON-EMERGENCY) RDO _____
5. <u> </u> NOTIFICATION OF UNUSUAL EVENT RDO _____ EO _____ FEMA _____	8. <u> </u> UNPLANNED RELEASE RDO _____ EO _____ FEMA _____ DOE _____ BRS _____ EPA _____
OTHER NOTIFICATIONS: EO (DAYS): _____	
COMMISSIONERS/ASSISTANTS BRIEFED, USE FORM ON REVERSE BRIEFING TIME: _____	
POWER REACTOR EVENT:	
POWER PRIOR TO EVENT? _____ POWER AT REPORT? _____ RESIDENT INFORMED: _____	
TRIP? _____ INITIATING SIGNAL? _____	
SAFETY INJECTION OR ECCS? _____ INITIATING SIGNAL? _____	
ESF ACTUATION? _____	
ACTION STATEMENT? _____	
EVENT DESCRIPTION/CAUSE: _____	
RADIOACTIVE RELEASES? (QUANTIFY): _____	
OTHER MAJOR PROBLEMS? _____	
PLANNED ACTIONS/PRESS RELEASES? _____	
OUTSIDE AGENCY OR PERSONNEL NOTIFIED BY LICENSEE: _____ STATES(S) _____ LOCAL _____	
OTHER _____	
DUTY OFFICER: _____	

PLEASE CALL BACK WITH ANY CHANGES OR ADDITIONAL INFORMATION