

LICENSEE EVENT REPORT

EXHIBIT A

CONTROL BLOCK: 1 (PLEASE PRINT OR TYPE ALL REQUIRED INFORMATION)

01 F L I C R P 3 2 0 0 - 1 0 0 0 0 0 - 0 0 3 4 1 1 1 1 4 5
7 8 9 LICENSEE CODE 14 15 LICENSE NUMBER 25 26 LICENSE TYPE 30 31 CAT 58

CON'T
01 L 6 0 5 0 - 0 3 0 2 7 0 7 2 1 8 3 8 0 8 1 9 8 3 9
7 8 REPORT SOURCE 60 61 DOCKET NUMBER 68 69 EVENT DATE 74 75 REPORT DATE 80

EVENT DESCRIPTION AND PROBABLE CONSEQUENCES 10

02 At 2030 on July 21, 1983, FPC noticed that the steam generator "A" operat-
03 ing range level recorder was indicating a level corresponding to 119
04 inches while the startup range was indicating 30 inches. (T.S. 3.3.3.6).
05 The recorder was repaired and returned to operability at 0520 on July 22,
06 1983. This is the second failure for the recorder and the thirteenth
07 event reported under Technical Specification 3.3.3.6.

08 _____
7 8 9
09 I E 11 E 12 B 13 I N S T R U 14 B 15 Z 16
7 8 9 10 11 12 13 14 15 16 17 18 19 20
17 8 3 1 0 3 0 0 3 L 0
21 22 23 24 25 26 27 28 29 30 31
ACTION TAKEN FUTURE ACTION EFFECT ON PLANT SHUTDOWN METHOD HOURS ATTACHMENT SUBMITTED NPRD-4 FORM SUB. PRIME COMP. SUPPLIER COMPONENT MANUFACTURER
B X Z Z 0 0 0 N N N B 0 4 5 26
33 34 35 36 37 38 39 40 41 42 43 44 45 46 47

CAUSE DESCRIPTION AND CORRECTIVE ACTIONS 27

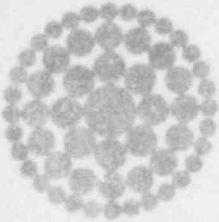
10 This event was caused, in part, by a bent pin connector on the recorder.
11 Because the operating range, unlike the startup range, is temperature-
12 compensated, the two ranges are not supposed to indicate identical OTSG
13 levels. An Engineering evaluation is underway to determine if any addi-
14 tional corrective action is necessary.

15 C 28 0 0 0 29 N/A 30 B 31 Routine Channel Check 32
7 8 9 10 11 12 13 14 15 16 17 18 19 20 21 22 23 24 25 26 27 28 29 30 31 32
FACILITY STATUS % POWER OTHER STATUS METHOD OF DISCOVERY
16 Z 33 Z 34 N/A 35 N/A 36
7 8 9 10 11 12 13 14 15 16 17 18 19 20 21 22 23 24 25 26 27 28 29 30 31 32
ACTIVITY CONTENT RELEASED OF RELEASE AMOUNT OF ACTIVITY LOCATION OF RELEASE
17 0 0 0 37 Z 38 N/A 39
7 8 9 10 11 12 13 14 15 16 17 18 19 20 21 22 23 24 25 26 27 28 29 30 31 32
PERSONNEL EXPOSURES NUMBER TYPE DESCRIPTION
18 0 0 0 40 N/A 41
7 8 9 10 11 12 13 14 15 16 17 18 19 20 21 22 23 24 25 26 27 28 29 30 31 32
PERSONNEL INJURIES NUMBER DESCRIPTION
19 Z 42 N/A 43
7 8 9 10 11 12 13 14 15 16 17 18 19 20 21 22 23 24 25 26 27 28 29 30 31 32
LOSS OF OR DAMAGE TO FACILITY TYPE DESCRIPTION
20 N 44 N/A 45
7 8 9 10 11 12 13 14 15 16 17 18 19 20 21 22 23 24 25 26 27 28 29 30 31 32
PUBLICATION ISSUED DESCRIPTION
NRC USE ONLY

NAME OF PREPARER P.G. Hughes

PHONE (904) 795-3802

IE22



USNRC REGION II
ATLANTA, GEORGIA

83 AUG 23 A9:35

**Florida
Power**
CORPORATION

August 19, 1983
3F-0883-15

Mr. James P. O'Reilly
Regional Administrator, Region II
U.S. Nuclear Regulatory Commission
Office of Inspection & Enforcement
101 Marietta Street N.W., Suite 2900
Atlanta, GA 30303

Subject: Crystal River Unit 3
Docket No. 50-302
Operating License No. DPR-72
Licensee Event Report No. 83-030

Dear Mr. O'Reilly:

Enclosed please find Licensee Event Report No. 83-030, which is submitted in accordance with Technical Specification 6.9.1.9.b.

Should there be any questions, please contact this office.

Sincerely,

P. Y. Baynard
Assistant to Vice President
Nuclear Operations

AEF/rw

Enclosure

cc: Document Control Desk
U.S. Nuclear Regulatory Commission
Washington, D.C. 20555

OFFICIAL COPY

TE 22
1/1