



PUBLIC SERVICE COMPANY OF COLORADO

FORT ST. VRAIN NUCLEAR GENERATING STATION

BOOK 2

NRC #9  
Eisenhut

2/16/83

NON-CONTROLLED COPY

RADIOLOGICAL EMERGENCY RESPONSE PLAN - STATION

NO.	SUBJECT	ISSUE NUMBER	EFFECTIVE DATE
RERP-ECP	Executive Command Post Procedure	6	01-03-83
RERP-EXP	Emergency Exposure Guidelines	1	08-02-82
RERP-FCP	Forward Command Post Procedure	8	01-03-83
RERP-FIELD	Field Monitoring Procedure	3	02-01-83
RERP-HOME	Home Packet for Off-Shift Notifications	4	02-16-83
RERP-ORG	FSV Emergency Organization and Responsibilities	3	01-03-83
RERP-PAG	Protective Action Guideline Recommendations	1	08-02-82
RERP-PCC	Personnel Control Center Procedure	8	12-20-82
RERP-SEOC	State Emergency Operations Center Procedure	5	01-03-83
RERP-SURVEY	Inplant/Onsite Radiological Monitoring	1	09-09-82
RERP-THYROID	Thyroid Blocking Agent Administration	2	12-03-82



# PUBLIC SERVICE COMPANY OF COLORADO

FORT ST. VRAIN NUCLEAR GENERATING STATION

RERP-HOME  
Issue 4  
Page 1 of 5

TITLE: HOME PACKET FOR OFF-SHIFT NOTIFICATIONS

ISSUANCE  
AUTHORIZED  
BY

2-11-83

*Don Warrington*

PORC  
REVIEW

**PORC 508 FEB 8- 1983**

EFFECTIVE  
DATE

**2-16-83**

<u>Sections</u>	<u>Description</u>	<u>Page</u>
1.0	<u>Criteria for Implementation</u> .....	3
2.0	<u>Procedure</u> .....	3
3.0	<u>Responsibilities</u> .....	5
4.0	<u>References</u> .....	5
5.0	<u>Referenced or Supporting Procedures</u> .....	5
Figure 1	Notification Fanout.....	1
Figure 2	Facility Staffing Requirements .....	1
Checklist 1	Management Contact Notification List for an UNUSUAL EVENT.....	1
Table 1	Plant Management Contacts.....	1
Table 2	Significant Event Table.....	1
Table 3	NOTIFICATION OF UNUSUAL EVENT Table.....	1
Table 4	ALERT Table.....	1
Table 5	SITE AREA EMERGENCY Table.....	1
Table 6	GENERAL EMERGENCY Table.....	1
Attachment 1	Impaired Fire Protection Notice (ANI) .....	1
Attachment 2	Initial Notification, Significant Event .....	1
Attachment 3	NOTIFICATION OF UNUSUAL EVENT (Notification Form) .....	1
Attachment 4	Notification to Activate State Emergency Response Centers.....	1



# PUBLIC SERVICE COMPANY OF COLORADO

FORT ST. VRAIN NUCLEAR GENERATING STATION

RERP-HOME  
Issue 4  
Page 2 of 5

Attachment 5	ECP Director's Call List.....	1
Attachment 6	FCP Director's (CEDs) Call List .....	1
Attachment 7	PCC Director's Call List.....	1
Attachment 8	State EOC Call List .....	1
Attachment 9	TSC Director's Call List.....	1
Attachment 10	Facility Directors/Alternates .....	1



### General

This procedure is provided for use, at home, by plant management contacts, RERP facility directors and alternates, and by the first individual on each facility director's call list. The purpose of this procedure is: (1) To assist plant management in determining the severity of an occurrence when contacted at home by the FSV duty Shift Supervisor; (2) To provide plant management contacts with copies of notification forms to assist the the duty Shift Supervisor in their completion; (3) To provide required telephone numbers for facility activation if required; and, (4) To assure that individuals who may potentially be required to call-in individuals for off-shift emergency facility activation are clearly identified.

### 1.0 Criteria for Implementation

This procedure may be utilized under virtually any off-normal off-shift situation where consultation regarding reportability or activation requirements must be addressed.

### 2.0 Procedure

#### 2.1 ANI Notifications

Notification to American Nuclear Insurers (ANI) is required under five (5) general categories listed below:

- Losses believed to be near, or above, the deductible (\$50,000);
- Incidents where fixed fire protection systems have operated under other than test conditions;
- Incidents where prompt assistance could help prevent further loss or expense, or where assistance is otherwise desirable;
- Incidents where incendiarism or malicious mischief is suspected; or
- Emergency impairments to fire protection equipment.

Whenever the on-duty Shift Supervisor believes an occurrence matches one of these circumstances, he will contact a plant management contact for consultation (where possible). The Shift Supervisor and plant management contact will jointly complete Attachment 1 to this procedure. Additional plant management contacts may be made utilizing Table 1 for reference.





## 2.2 "Significant Event" Notifications

Notification to the NRC operations center within one (1) hour is required for events which fall under the general descriptions shown in Table 2. When these events transpire, or when the on-duty Shift Supervisor believes an event may require such reporting, he will contact one of the plant management contacts listed in Table 1. Together, where possible, they will jointly complete the "Significant Event Notification Form," Attachment 2 of this procedure. Additional plant management contacts may be made as necessary, utilizing Table 1.

## 2.3 Radiological Emergency Response Plan (RERP) Notifications

Notification to both offsite authorities and the NRC within fifteen (15) minutes of event classification is required when a situation has arisen that meets classification criteria set forth in Tables 3-6 of this procedure. Events classified as a NOTIFICATION OF UNUSUAL EVENT are reported to the state utilizing the notification format of Attachment 3. The plant management contact shall assist the completion of this form. If the event is an ALERT, or higher, RERP event, Attachment 4 shall be jointly completed.

### 2.3.1 NOTIFICATION OF UNUSUAL EVENT

For a NOTIFICATION OF UNUSUAL EVENT, the initial management contact shall notify other contacts per Checklist 1 and forward the completed form to the Technical Services Department.

### 2.3.2 ALERT or Higher RERP Event

For an ALERT or higher RERP event, the notification fanout shown in Figure 1 of this procedure shall occur to assure prompt facility activation and staffing. Under these conditions, Facility Directors will be contacted by the PSCo Telephone Operator. The Facility Director will in turn contact his alternate. The alternate, or the next person contacted, is then responsible for performing the additional notifications specified herein. Each facility's call list is reproduced as Attachments 5-9, herein. The Facility Director primary and alternates are shown on Attachment 10.



### 3.0 Responsibilities

#### 3.1 Duty Shift Supervisor

Contact a plant management contact in accordance with existing Operations Orders, Notification Procedures, or RERP-Implementing Procedures, where possible.

#### 3.2 Plant Management Contacts

Assist the Shift Supervisor, as required, and perform additional notifications, as appropriate to a given situation.

### 4.0 References

4.1 FSV Radiological Emergency Response Plan

4.2 PT-80-177, Subject: Fire/All-Risk Emergency Notification to the NRC; March 26, 1980

4.3 PT-80-177, Subject: Fire/All-Risk Emergency Notification to the NRC; October 13, 1980

### 5.0 Referenced or Supporting Procedures

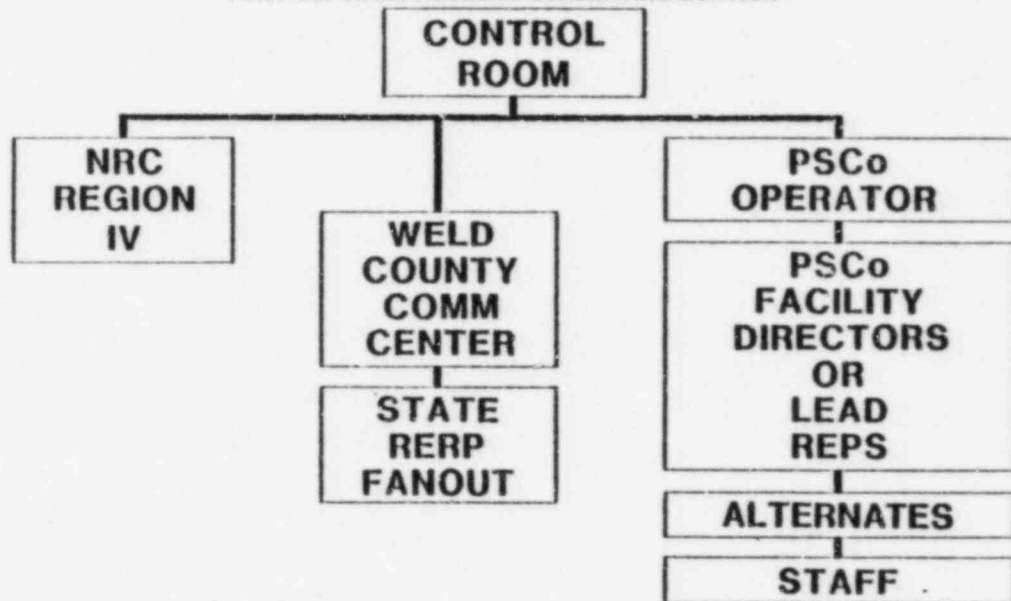
5.1 RERP PHONE LISTS

5.2 CR-UE, Control Room UNUSUAL EVENT Procedure

5.3 CR-ALERT, Control Room ALERT, SITE EMERGENCY, GENERAL EMERGENCY Procedure.



NOTIFICATION FANOUT  
FORT ST. VRAIN NUCLEAR GENERATING STATION





# PUBLIC SERVICE COMPANY OF COLORADO

FORT ST. VRAIN NUCLEAR GENERATING STATION

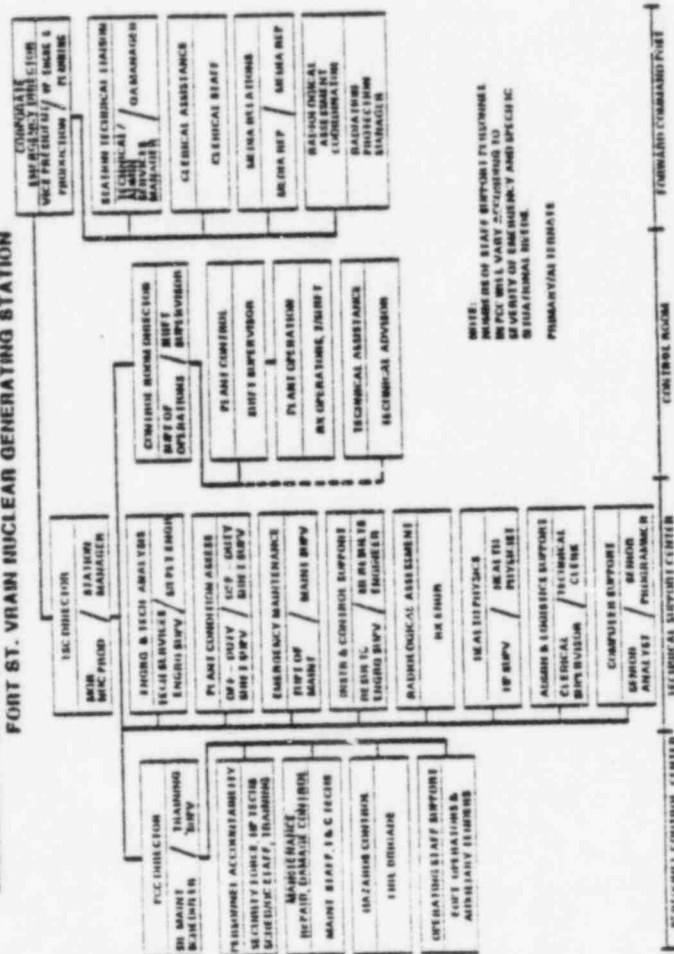
RERP-HOME

Figure 2

Issue 4

Page 1 of 1

FIGURE 5.2-2  
EMERGENCY ORGANIZATION (ALERT, SITE EMERGENCY, GENERAL EMERGENCY)  
FORT ST. VRAIN NUCLEAR GENERATING STATION





# PUBLIC SERVICE COMPANY OF COLORADO

FORT ST. VRAIN NUCLEAR GENERATING STATION

RERP-Home  
Checklist 1  
Issue 4  
Page 1 of 1

## MANAGEMENT CONTACT NOTIFICATION LIST FOR AN UNUSUAL EVENT

The first management contact will make the following notifications, and forward the completed form to the Technical Services Department.

Subsequent Contacts	Date/ Time	Remarks
Plant Management (Contact 1) Supt. of Oper.		
Station Manager		
Administrative/ Tech. Serv. Mgr.		
Manager, Nuclear Production		
Radiation Pro- tection Manager		
Vice President, Production		
Media relations Bob Burns		
or Garv Reeves		
or Marilyn McAdams		
NRC Bill Dickerson		
or G.I. Plumlee, III		

\*Calls to PSC phones from outside of the PSC telephone system may require use of a different telephone exchange. In these cases, utilize the exchange in parentheses.



TABLE 1

## PLANT MANAGEMENT CONTACTS\*

	<u>Page</u> <u>Phone</u>	<u>Plant</u> <u>Ext.</u>	<u>Home</u> <u>Phone</u>
Supt. of Operations			
Station Manger			
Admin./Tech.			
Serv. Manager			
Mgr. Nuclear Prod.			
Rad. Protection			
Manager			
Vice Pres., Prod.			

\* Listed in order of preferred contact sequence.



TABLE 2

SIGNIFICANT EVENT TABLE <sup>1</sup>

<u>Event (NRC Description)</u>	<u>Typical Initiating Events <sup>2</sup></u>
1. Any event requiring initiation of the licensee's emergency plan or any section of that plan.	<div>1. a) Initiation of the Radiological Emergency Response Plan (RERP) as described in Tables 4.1-1 through 4.1-4 of the Plant RERP.</div> <div>b) Abnormal coolant temperature and/or pressure or abnormal fuel temperatures.</div> <div>c) Loss of engineered safety feature or fire protection system function requiring shutdown by Technical Specifications (e.g., because of malfunction, personnel error, or procedural inadequacy).</div>
2. The exceeding of any Technical Specification Safety Limit	<div>2. a) Exceeding limits of SL 3.1, Reactor Core Safety Limit.</div> <div>b) Exceeding limits of SL 3.2, Reactor Vessel Pressure Safety Limit</div> <div>NOTE: Action to be taken specified in AC 7.2.</div>
3. Any event that results in the nuclear power plant not being in a controlled or expected condition while operating or shutdown.	<div>3. a) Reactor pressure exceeds limiting safety system setting (LSSS 3.3) without automatic trip.</div> <div>b) Inability to trip and insert sufficient rods to achieve Technical Specification shutdown margin.</div>



TABLE 2

SIGNIFICANT EVENT TABLE <sup>1</sup>

<u>Event (NRC Description)</u>	<u>Typical Initiating Events <sup>2</sup></u>
3. (Cont.)	<ul style="list-style-type: none"><li>c) Failure of the PPS to complete a required protective action once initiated.</li><li>d) Failure of a system other than the systems subject to limiting safety system settings to actuate, or actuation of a limiting safety system at a monitored parameter value less conservative than listed in the system's Technical Specifications.</li><li>e) Operation with unacceptable PCRV penetration interspace leak rate test results.</li><li>f) Reactivity anomalies involving disagreement with the predicted value of reactivity balance under steady state conditions power operation <math>\geq 0.01\Delta K/K</math>; a calculated shutdown margin less conservative than Technical Specifications; short term reactivity increases that correspond to a reactor period of less than 5 seconds, or if subcritical, an unplanned reactivity insertion of <math>&gt; .005\Delta K/K</math>; or any unplanned criticality.</li><li>g) Upsets resulting in reactor pressure and flux transients that peak at values higher than analyzed.</li></ul>





TABLE 2

SIGNIFICANT EVENT TABLE <sup>1</sup>

<u>Event (NRC Description)</u>	<u>Typical Initiating Events <sup>2</sup></u>
3. (Cont.)	h) Failure of a PCRV safety/relief valve to close after pressure has reduced below the required reseal value.
4. Any act that threatens the safety of the nuclear power plant or site personnel, or the security of special nuclear material (SNM) including instances of sabotage or attempted sabotage.	4. a) Threatened civil disturbances that result in initiation of the Security Contingency Plan. b) Evidence of unauthorized access to Fuel Storage Building or Fuel Storage Wells. c) Notification by fuel shipping carrier of theft or attempted theft of fuel. d) Actual incidents of sabotage or threatened sabotage.
5. Any event requiring initiation of shutdown of the nuclear power plant in accordance with Technical Specification Conditions for operation.	5. a) ACM generator breaker tripped after 20 minutes during test; tripped unit found to be defective, declared inoperable. b) One of two centrifugal turbine water removal pumps inoperable due to faulty bearing; redundant pump inoperable.

NOTE: In the two examples listed above, repair(s) cannot be implemented within LCO time limits.



TABLE 2

SIGNIFICANT EVENT TABLE <sup>1</sup>

<u>Event (NRC Description)</u>	<u>Typical Initiating Events <sup>2</sup></u>
6. Personnel error or procedural inadequacy which, during normal operations, anticipated operational occurrences, or accident conditions, prevents, or could prevent by itself, the fulfillment of the safety function of those structures, systems, and components that are needed to	6. a) During refueling operations, a $.01\Delta p$ shutdown margin is not maintained due to incorrect rod removal sequence. b) Incorrect valve lineup which results in shut off of secondary system decay heat removal sequence. c) Error in analysis of waste tank results in release which exceeds acceptable limits. d) Liquid waste monitor setpoints raised for liquid waste release completed. Reactor Building sump pumps taken out of pull-to-lock. Setpoints not reset.
i) shutdown the reactor safely and maintain it in a safe condition; or,	
ii) remove residual heat following reactor shutdown; or,	
iii) limit the release of radioactive material to acceptable levels or reduce the potential for such release.	
7. Any event resulting in manual or automatic actuation of Engineered Safety Features, including the Reactor Protection System (scrams and loop shutdown only).	7. <u>EXCEPTIONS:</u> a) Manual scram initiated at $\leq 2\%$ during a normal shutdown.



TABLE 2

SIGNIFICANT EVENT TABLE <sup>1</sup>

<u>Event (NRC Description)</u>	<u>Typical Initiating Events <sup>2</sup></u>
7. (Cont.)	b) Only one of three channels tripped manually or automatically, but no final protective action takes place, nor is required.  c) Actuation of the forementioned systems which result from, and are a part of, the planned sequence during surveillance testing.
8. Any accidental, unplanned or uncontrolled radioactive release. (Normal or expected releases from maintenance or other operational activities are not included).	8. a) Initiation of EP H-3, "High Activity in the Plant."  b) Burst of gas waste tank rupture disk.
9. Any fatality or serious injury occurring on-site and requiring off-site medical facility for treatment.	9. A serious injury is considered to be an injury which in the judgment of the licensee representative will require hospitalization for an extended period of time (greater than 48 hours).
10. Any serious personnel radioactive contamination requiring on-site or off-site decontamination.	10. Decontamination process requiring use of agents other than soap and water.



TABLE 2

SIGNIFICANT EVENT TABLE <sup>1</sup>

<u>Event (NRC Description)</u>	<u>Typical Initiating Events <sup>2</sup></u>
11. Any event meeting the criteria of 10CFR20.403 for one hour notification.	11. a) Exposure of the whole body of any individual to 25 rem or more of radiation; exposure of the skin of the whole body of any individual to 150 rem or more of radiation; or exposure of the feet, hands, or forearms of any individual to 375 rem or more of radiation.  b) A loss of one working week or more of the operation of any facilities affected.  c) The release of radioactive material in concentrations which, averaged, over a period of 24 hours, would exceed 5000 times the limits specified for such materials in 10CFR20, Appendix B, Table II.  d) Damage to property in excess of \$200,000.
12. Strikes of operating employees or for security guards, or honoring of picket lines by these employees.	12. Situation evident.

NOTE 1: Many of the events contained in this table are duplicated in the RERP, Tables 4.1-1 through 4.1-4. For those cases it is imperative that RERP actions are carried out in addition to reporting requirements contained in this section. RERP actions take precedence whenever doubt or time is a factor. Tables in Section 2 will classify operating events at their highest level of response wherever duplication of events exists.

NOTE 2: This table lists only typical initiating events that fit the Nuclear Regulatory Commission event descriptions. This column does not list all initiating events that are conceivable for a particular Nuclear Regulatory Commission event description.



TABLE 3

NOTIFICATION OF UNUSUAL EVENT

<u>Event</u>	<u>Indication</u>
1. Any unplanned radiological release to the Reactor Building or its ventilation system.	1. Alarms on: RT 7312 CAM(s) RT 7324-1 RT 7324-2 RT 7325-1 RT 7325-2 RT 4801 RT 4802 RT 4803 RT 73437-1, 2
2. Any liquid waste release resulting in offsite effluent in excess of Technical Specification limits.	2. a) RT 6212 or 6213 alarm with inability to prevent discharge offsite. b) As determined by station personnel.
3. Indication of minor fuel damage detected in primary coolant.	3. a) 25% increase in circulating activity from previous equilibrium conditions at the same power level. RT 9301 (RR 93256). b) SR 5.2.11 results.
4. Serious fire at the plant lasting more than 10 minutes which could lead to substantial degradation of plant safety systems, or which could result in the release of radiological or toxic materials.	4. a) any of various alarms on Fire Control Alarm Panel; b) Fire Pump 1A auto start; c) verbal reports.



TABLE 3

NOTIFICATION OF UNUSUAL EVENT

<u>Event</u>	<u>Indication</u>
5. Abnormal coolant temperatures or core region temperature rises to the extent requiring shutdown in accordance with Technical Specifications.	5. Violations of LCO 4.1.7 or LCO 4.1.9 for region outlet mismatch, or region $\Delta T$ , respectively, to the extent that shutdown per Station Technical Specifications is required (SOP 12-04).
6. Natural phenomenon that may be experienced or threatened that represent risks beyond normal levels: a) earthquake b) floods c) tornadoes d) extremely high winds	6. a) Seismic Recorder Operate;  b)-d) as visually observed by, or reported to, station personnel.
7. Unusual Hazards Experienced:  a) Aircraft crash on site or near the site that is subject to public concern because of possible detrimental effect on the plant;  b) Onsite explosions or near site explosions that may be subject to public concern because of possible detrimental effect on the plant; or,	7. As visually observed by, or reported to, station personnel.



# PUBLIC SERVICE COMPANY OF COLORADO

FORT ST. VRAIN NUCLEAR GENERATING STATION

RERP-HOME  
Table 3  
Issue 4  
Page 3 of 4

TABLE 3

## NOTIFICATION OF UNUSUAL EVENT

<u>Event</u>	<u>Indication</u>
7. c) Onsite or near site plant related accidents that could result in the release of toxic material or spills of flammable materials.	
8. Any serious radiological exposure of plant personnel or the transportation to offsite facilities of contaminated personnel who may have been injured. (Probably cannot be determined within two hours- call to be made in a timely fashion.)	8. As occurring.
9. Accidents within the state that may involve plant spent fuel shipments or plant radioactive waste shipments.	9. As occurring, or reported by shipper.
10. Loss of Engineered Safety Feature or Fire Protection System to the extent requiring Shutdown in accordance with station Technical Specifications.	10. Shutdown required in accordance with applicable LCOs:  a) Engineered Safeguards  1) Plant ventilation- LCO 4.5.1  2) Steam/Water Dump System - LCO 4.3.3



TABLE 3

NOTIFICATION OF UNUSUAL EVENT

<u>Event</u>	<u>Indication</u>
10. (Cont).	<ul style="list-style-type: none"><li>3) PCRV penetration flow restriction devices - LCO 4.2.7 and LCO 4.2.9</li><li>4) PCRV penetration secondary closures - LCO 4.2.7 and LCO 4.2.9</li><li>5) PCRV Safety Valves - LCO 4.2.8 SL 3.2 LSSS 3.3.2.c</li><li>b) Fire Protection System - LCO 4.2.6, LCO 4.10.1- LCO 4.10.5</li></ul>
11. Indication or alarms on radiological effluent monitors not functional.	<ul style="list-style-type: none"><li>11. Data Logger Alarm/Alarm Summary indication of non-operational alarm or indication on:<ul style="list-style-type: none"><li>a) RT 7324-1, 2 <u>and</u> RT 4803; or</li><li>b) RT 7325-1, 2, RT 4802, <u>and</u> RT 73437-1; or</li><li>c) RT 73437-2 <u>and</u> RT 4801; or</li><li>d) RT 6212 <u>and</u> RT 6213.</li></ul></li></ul>

NOTE: Use LCO 4.8.1 Technical Specification Limits as basis.





# PUBLIC SERVICE COMPANY OF COLORADO

FORT ST. VRAIN NUCLEAR GENERATING STATION

RERP-HOME  
Table 4  
Issue 4  
Page 1 of 5

TABLE 4

ALERT

<u>Event</u>	<u>Indication</u>
1. Rapid, severe fuel particle coating failure.	1. Coolant Inventory of a) $>2.4 \frac{(CI) (Mev)}{lb}$ Beta-Gamma b) circulating I-131 activity equivalent $>24Ci$ c) plate out I-131 $>1 \times 10^4 Ci$ d) SR 5.2.6 or SR 5.2.11 results.
2. Rapid, gross failure of one steam generator reheat section with loss of offsite power.	2. Loop 1 Hot Reheat Header (HRH) activity high (5mrem/hr); or, Loop 2 HRH activity high (5mrem/hr) accompanied by 230 Kv OCB trips and RAT undervoltage/loss of power alarm.
3. Primary coolant pressure decay (to a value greater than 100 psi less than normal pressure, accompanied by area and stack radiation monitor alarms).	3. PAL 9335 PAL 9347 PAL 9359 and area monitor or stack monitor alarm
4. High radiation levels or high airborne contamination which indicates severe degradation in control of radioactive materials. (Increase by factor of 1,000 over normal.) e.g. lifting PCRV relief valve or abnormal release to cooling tower blowdown.	4. RT 7312 CAM(s) alarm RT 6212 RT 6213 RT 93252-12 Area Monitors  Alarms with corresponding meter readings on area or process monitors.



# PUBLIC SERVICE COMPANY OF COLORADO

FORT ST. VRAIN NUCLEAR GENERATING STATION

RERP-HOME  
Table 4  
Issue 4  
Page 2 of 5

TABLE 4

ALERT

<u>Event</u>	<u>Indication</u>
5. Loss of offsite power <u>and</u> vital onsite AC power for up to 30 minutes.	5. 230 KV OCB trips <u>and</u> RAT undervoltage/loss of power alarm accompanied by 4 KV bus undervoltage 480V bus undervoltage, <u>and</u> Diesel Trouble alarms.
6. Loss of all vital DC power for up to 30 minutes.	6. DC bus 1 < 10 volts and DC bus 2 < 10 volts
7. Loss of primary coolant forced circulation for between 2 and 5 hours.*	7. All He flow indicators read zero.
8. Loss of secondary coolant functions needed for removing residual heat.	8. All secondary coolant flow indicators read zero.
9. Loss of normal ability to place the reactor in a subcritical condition by scram of the control rods.	9. a) Indication of insufficient rods inserted; or, b) neutron count rate not decreasing.
10. Serious fire which could lead to substantial degradation of plant safety systems.	10. a) any of various alarms on Fire Control Alarm Panel b) Fire Pump 1A auto start c) verbal reports

\* These times are LOFC from 100% power. Times may be correspondingly longer for lower power levels (CMG-4).



# PUBLIC SERVICE COMPANY OF COLORADO

FORT ST. VRAIN NUCLEAR GENERATING STATION

RERP-HOME

Table 4

Issue 4

Page 3 of 5

TABLE 4

ALERT

<u>Event</u>	<u>Indication</u>
11. Radiological effluents exceed 10 times technical specifications instantaneous limits.	11. a) RT 7324-1 indicating $\geq 2.5 \times 10^{-2} \mu\text{Ci/cc}$ b) RT 7324-2 indicating $\geq 2.5 \times 10^{-2} \mu\text{Ci/cc}$ c) RT 7325-1 indicating $\geq 7.0 \times 10^{-8} \mu\text{Ci/cc}$ d) RT 7325-2 indicating $\geq 7.0 \times 10^{-8} \mu\text{Ci/cc}$ e) RT 73437-1 indicating $\geq 7.0 \times 10^{-8} \mu\text{Ci/cc}$ I-131. f) RT 4802 indicating $\geq 7.0 \times 10^{-8} \mu\text{Ci/cc}$ I-131. g) RT 4803 indicating $\geq 2.5 \times 10^{-2} \mu\text{Ci/cc}$  Utilize reading from above instruments and calculate dose rate per procedures
12. Ongoing security compromise.	12. a) As observed or reported; b) Guard Station Trouble alarm; or, c) Guard Station Acknowledge alarm.



TABLE 4

ALERT

<u>Event</u>	<u>Indication</u>
13. Severe natural phenomenon being experienced or or projected, such as:	13. a) Seismic recorder operate ( $\geq 0.05$ g)
a) earthquake exceeding Operating Basis Earthquake levels;	b) As Reported
b) flood near design level; or,	c) As Reported
c) tornado striking facility.	
14. Other hazards being experienced or projected such as:	14. As reported by, or to, station personnel.
a) aircraft crash on facility;	
b) missile impact on facility;	
c) explosion damage affecting plant operation; or,	
d) entry into facility environs of toxic or flammable gas.	
(Some effect on facility experienced or anticipated)	
15. Evacuation of control room anticipated or required, with control of shutdown systems established from local stations. (Control room integrity breached).	15. As deemed necessary by Shift Supervisor



TABLE 4

ALERT

<u>Event</u>	<u>Indication</u>
16. All alarms (annunciators) lost for more than 15 minutes and reactor is not shutdown; or, plant transient experienced while all alarms lost. (Parameter indication still functional.)	16. Control room observation.
17. Other plant conditions warranting precautionary activation of the PCC, TSC, and FCP.	17. As deemed necessary by Shift Supervisor.



# PUBLIC SERVICE COMPANY OF COLORADO

FORT ST. VRAIN NUCLEAR GENERATING STATION

RERP-HOME  
Table 5  
Issue 4  
Page 1 of 4

TABLE 5  
SITE AREA EMERGENCY

<u>Event</u>	<u>Indication</u>
1. Loss of primary coolant forced circulation for over 5 hr. from 100% power. (Lower power levels preceeding LOFC extends time available before core damage is incurred. See CMG-4.)	1. All He flow indicators read zero.
2. Non-isolable primary coolant leakage through a steam generator reheat section.	2. Loop 1 or 2 HRH activity alarm-high with Shift Supervisor determination that leakage is non-isolable.
3. PCRV relief valve remains open.	3. RT 93252-12 alarm and rapidly decreasing Reactor pressure.
4. Determination of inability to restore onsite AC power.	4. 230 KV OCB trips and RAT undervoltage/loss of power alarm accompanied by 4Kv bus undervoltage, 480v bus undervoltage, and Diesel Trouble alarms. Standby Diesel Fail to Start.
5. Loss of functions needed for plant hot shutdown.	5. Inability to insert sufficient control rods accompanied by failure of emergency reserve shutdown system - resulting in inability to maintain - .01Δp at 220°F.
6. Major damage to spent fuel due to severe cask damage resulting in release of radioactivity to plant environs.	6. a) Visual observation. b) area radiation monitor alarms.



# PUBLIC SERVICE COMPANY OF COLORADO

FORT ST. VRAIN NUCLEAR GENERATING STATION

RERP-HOME  
Table 5  
Issue 4  
Page 2 of 4

TABLE 5  
SITE AREA EMERGENCY

<u>Event</u>	<u>Indication</u>
7. Fire adversely affecting safety systems.	7. a) Fire pump 1A start; b) Fire Control Alarm Panel c) Various alarms according to affected safety system. d) Shift Supervisor determines fire beyond capability of station staff.
8. a) Effluent monitors detect levels corresponding to greater than 50 mrem/hr, or greater than 500 mrem/hr whole body for two minutes at the site boundary under adverse meteorology (or levels 5 times the above for thyroid dose rate). b) These dose rates are projected based on other plant parameters or are measured in the environs.	8. Stack monitor alarm with corresponding stack concentration indications on: a) RT 73437-1, RT 4802, and RT 7325-1, 2 $\geq 6.7 \times 10^{-5} \mu\text{Ci/cc}$ I-131; or, b) RT 7324-1, 2, and RT 4803 $> 6.6 \times 10^{-2} \mu\text{Ci/cc}$ mixed noble gasses.
9. Imminent loss of physical control of the plant due to security breach. (Response detailed in Station Security Plan.)	9. Situation evident.



# PUBLIC SERVICE COMPANY OF COLORADO

FORT ST. VRAIN NUCLEAR GENERATING STATION

RERP-HOME  
Table 5  
Issue 4  
Page 3 of 4

TABLE 5  
SITE AREA EMERGENCY

<u>Event</u>	<u>Indication</u>
10. Severe natural phenomenon being experienced or projected (with plant not in cold shutdown), such as;	10.
a) earthquake greater than Safe Shutdown Earthquake	a) Seismic Recorder Operate alarm with indication of ground motion greater than 0.10g horizontal or greater than 0.067g vertical.
b) flood greater than design levels	b) As reported or observed.
c) winds in excess of design levels	c) average wind velocity greater than 90 mph or 10 second gusts exceeding 99 mph.
d) tornado in excess of design levels	d) horizontal wind velocity greater than 202 mph.
11. Other hazards being experienced or projected with reactor not shutdown, such as;	11. As observed by or reported to, station personnel.
a) aircraft crash affecting vital structures;	
b) severe damage to safe shutdown equipment;	
c) entry of toxic/flammable gas into vital areas.	
12. Reactor building louvers open due to building being overpressurized by primary coolant. (DBA #2)	12. a) Louvers Open Alarm (3 inches water) b) Reactor building radiation alarms.





# PUBLIC SERVICE COMPANY OF COLORADO

FORT ST. VRAIN NUCLEAR GENERATING STATION

RERP-HOME  
Table 5  
Issue 4  
Page 4 of 4

TABLE 5

SITE AREA EMERGENCY

<u>Event</u>	<u>Indication</u>
13. Evacuation of control room, accompanied by inability to locally control shutdown systems within 15 minutes.	13. Remote shutdown instrumentation indications (panel I-49).
14. Other plant conditions warranting activation of FCP/EOCs, monitoring teams, and precautionary public notification.	14. As determined by Shift Supervisor.



# PUBLIC SERVICE COMPANY OF COLORADO

FORT ST. VRAIN NUCLEAR GENERATING STATION

RERP-HOME  
Table 6  
Issue 4  
Page 1 of 1

TABLE 6

GENERAL EMERGENCY

<u>Event</u>	<u>Indication</u>
1. a) Effluent monitors detect levels corresponding to 1 rem/hr. whole body (or 5 rem/hr thyroid) at the exclusion area boundary under actual meteorological conditions.	1. Stack monitor RT-7324-1, 2 alarm, or Corresponding dose rates determined with E-500 or cutie-pie detector per procedure HPP-56 and associated graphs.
b) These dose rates are projected based on other plant parameters, or are measured in the environs.	
2. Loss of physical control of the facility. (due to security breach).	2. Situation evident.
3. Other plant conditions exist that make release of large amounts of radioactivity possible.	3. As determined by Shift Supervisor.



PUBLIC SERVICE COMPANY OF COLORADO

FORT ST. VRAIN NUCLEAR GENERATING STATION

RERP-HOME  
Attachment 1  
Issue 4  
Page 1 of 4

ATTACHMENT I  
IMPAIRED FIRE PROTECTION NOTICE

Report No. \_\_\_\_\_ Year \_\_\_\_\_ Sequence No. \_\_\_\_\_

ATTACHMENT I  
IMPAIRED FIRE PROTECTION NOTICE

NOTE: It is important that the time of all calls and names of people contacted be logged. Any further followup calls received or made should be logged as to time and identity of persons involved and the information transmitted or received shall also be logged.

GIVE THIS INFORMATION AS SHOWN

1. Facility Name: Public Service Company of Colorado Unit No. One

2. Location: Fort St. Vrain, Platteville, Colorado

Below Is the Information Which Will Be Requested Of The Caller

3. Caller's Name: \_\_\_\_\_ Phone: \_\_\_\_\_

4. Date and time of occurrence: \_\_\_\_\_

5. Details and extent of impairment:

\_\_\_\_\_  
\_\_\_\_\_  
\_\_\_\_\_  
\_\_\_\_\_

6. Did impairment result from a loss? ☐ \*Yes ☐ No If yes,  
details: \_\_\_\_\_

\*Loss would be a fire, accidental system operation, windstorm damage, etc.



PUBLIC SERVICE COMPANY OF COLORADO

FORT ST. VRAIN NUCLEAR GENERATING STATION

RERP-HOME  
Attachment 1  
Issue 4  
Page 2 of 4

7. Restoration (of system) begun? ☐ Yes ☐ No

Restoration work to be continuous? ☐ Yes ☐ No

8. Impaired area or equipment operable? ☐ Yes ☐ No

Estimated restoration time: \_\_\_\_\_

9. Precautions: ☐ Valves tagged out

☐ Discontinued welding, cutting, and hot work

☐ Discontinued smoking

☐ Notify Control Room (Shift) Supervisor, or  
other applicable management.

☐ Notify Fire Department/Fire Brigade

☐ Increased watchman service to \_\_\_\_\_ hourly

☐ Extra extinguishers/firehose in area

Other: \_\_\_\_\_

10. Contacts made by Shift Supervisor:

a) Name of ANI contact: \_\_\_\_\_

b) Time of ANI contact: \_\_\_\_\_

Management Contact:

a) Name of management contact: \_\_\_\_\_

b) Time of management contact: \_\_\_\_\_

11. Additional contacts made/received:

a) Per attached call sheet log.



PUBLIC SERVICE COMPANY OF COLORADO

FORT ST. VRAIN NUCLEAR GENERATING STATION

RERP-HOME  
Attachment 1  
Issue 4  
Page 3 of 4

12.

RESTORED

a) Repeat Steps 1 and 2 above

b) Caller's Name: \_\_\_\_\_

c) Date and time of restoration: \_\_\_\_\_

d) Name of ANI contact: \_\_\_\_\_

e) Time of ANI contact: \_\_\_\_\_

13. The Shift Supervisor shall send the completed copies of the completed forms directly to Technical Services.

14. If Notification was a Fire/All-Risk Emergency, Technical Services will:

a) Determine if a Reportable Occurrence is required, and prepare a facsimile copy if a 14 day report is indicated.

b) Assign a sequential number and send a copy to the Superintendent, Operations and a copy to PORC.





PUBLIC SERVICE COMPANY OF COLORADO

FORT ST. VRAIN NUCLEAR GENERATING STATION

RERP-HOME  
Attachment 2  
Issue 4  
Page 1 of 4

Initial Notification, Significant Event Notification

Report No. \_\_\_\_\_ Year \_\_\_\_\_ Sequence No. \_\_\_\_\_

IMPORTANT:

It is important that the time of all calls and names of people contacted be logged. Any further follow-up calls received or made should be logged as to time and identity of persons involved and the information transmitted or received shall also be logged.

1. Name and Identity of Caller: \_\_\_\_\_

2. Date of Event: \_\_\_\_\_ Time of Event: \_\_\_\_\_

3. This notification appears to be required pursuant to 10CFR 50.72, Item number \_\_\_\_\_ (1-12).

4. Description of Event: \_\_\_\_\_

\_\_\_\_\_  
\_\_\_\_\_  
\_\_\_\_\_  
\_\_\_\_\_  
\_\_\_\_\_

5. Actions Taken: \_\_\_\_\_

\_\_\_\_\_  
\_\_\_\_\_  
\_\_\_\_\_  
\_\_\_\_\_  
\_\_\_\_\_

6. Status:

\_\_\_\_\_ Under control by on-site staff, no off-site assistance anticipated. Final report.

\_\_\_\_\_ Under control by on-site staff. Will keep NRC advised.

\_\_\_\_\_ Off-site assistance may be required. Will advise.  
(See Item #7)



PUBLIC SERVICE COMPANY OF COLORADO

FORT ST. VRAIN NUCLEAR GENERATING STATION

RERP-HOME  
Attachment 2  
Issue 4  
Page 2 of 4

\_\_\_\_\_ Off-site assistance required. (See Item #7)

7. If off-site assistance is anticipated or required, describe assistance that has been or may be requested:

---

---

---

---

---

8. Does the event involve off-site releases of the potential for off-site release that would affect the general health and safety of the public as the result of Fort St. Vrain conditions?

\_\_\_\_\_ Yes \_\_\_\_\_ No

9. If yes, provide a good description: \_\_\_\_\_

---

---

---

---

---

10. Contacts made by Shift Supervisor:

a) Name of NRC contact: \_\_\_\_\_

b) Time of NRC contact: \_\_\_\_\_

Management Contact

a) Name of management contact: \_\_\_\_\_

b) Time of management contact: \_\_\_\_\_

11. Contacts made by management:

a) Per attached call sheet log.





12. The Shift Supervisor and Management Contact shall send their copies of the completed forms directly to Technical Services who will:
  - a) Determine if a reportable occurrence is required and prepare a facsimile copy if a 14 day report is indicated.
  - b) Send a copy to the Superintendent, Operations.
  - c) Send a copy to PORC.



RERP-HOME  
Attachment 2  
Issue 4  
Page 4 of 4

FORM 372 - 22 - 3643



PUBLIC SERVICE COMPANY OF COLORADO

FORT ST. VRAIN NUCLEAR GENERATING STATION

RERP-HOME  
Attachment 3  
Issue 4  
Page 1 of 3

NOTIFICATION OF UNUSUAL EVENT

A. The Emergency Coordinator and first management contact will complete the following information jointly:

1. Name and identity of caller \_\_\_\_\_

2. Date of Event \_\_\_\_\_ Time of Event \_\_\_\_\_

3. General Category of Event

\_\_\_\_\_ Unplanned Radiological Release to Reactor Building

\_\_\_\_\_ Fuel Failure

\_\_\_\_\_ Fire

\_\_\_\_\_ Natural Phenomenon (circle one)

Earthquake Flood Tornado Winds

\_\_\_\_\_ Unusual Hazards (circle one)

Aircraft Explosion Toxic Material

Other (Specify) \_\_\_\_\_

\_\_\_\_\_ Spent Fuel Incident

4. Description of Event \_\_\_\_\_

5. Actions Taken \_\_\_\_\_

6. Status:

\_\_\_\_\_ Under control by onsite staff, no offsite assistance anticipated.

\_\_\_\_\_ Under control by onsite staff. Will keep State and NRC advised.

7. At the present time, the event does not involve offsite release or the potential for offsite releases that would affect the general health and safety of the public.



PUBLIC SERVICE COMPANY OF COLORADO

FORT ST. VRAIN NUCLEAR GENERATING STATION

RERP-HOME  
Attachment 3  
Issue 4  
Page 2 of 3

B. The Emergency Coordinator will make notifications as follows:

Contact with State EOC \_\_\_\_\_, and Governor's Office \_\_\_\_\_  
or Mansion \_\_\_\_\_

1. READ the following statement verbatim:

"THIS IS A NOTIFICATION OF AN UNUSUAL EVENT AT THE FORT ST. VRAIN NUCLEAR GENERATING STATION. THIS NOTIFICATION DOES NOT REQUIRE ACTIVATION OF EMERGENCY RESPONSE CENTERS. THIS NOTIFICATION REQUIRES VERIFICATION OF RECEIPT BY THE STATE. VERIFY BY CALLING \_\_\_\_\_"

2. READ all the information recorded in Step A (Page 1 of this ATTACHMENT).

3. RECORD the following information:

Name of State EOC contact \_\_\_\_\_ Date/Time \_\_\_\_\_

Name of Governor's Office/Mansion Contact \_\_\_\_\_

Date/Time \_\_\_\_\_

Call back verification from State EOC, Date/Time \_\_\_\_\_

Call back verification from Governor's Office/Mansion

Date/Time \_\_\_\_\_

Contact with NRC Operations Center (Hot Line or \_\_\_\_\_)

(If NRC Hot Line and Land Line are inoperative, use HP Network line.)

1. READ the following statement verbatim:

"THIS IS NOTIFICATION OF A SIGNIFICANT EVENT AT THE FORT ST. VRAIN NUCLEAR GENERATING STATION AT PLATTEVILLE, COLORADO. THIS NOTIFICATION APPEARS TO BE REQUIRED PURSUANT TO 10CFR50.72, ITEM NUMBER 1. THIS NOTIFICATION DOES NOT REQUIRE ACTIVATION OF FEDERAL OR STATE EMERGENCY RESPONSE ORGANIZATIONS."



**PUBLIC SERVICE COMPANY OF COLORADO**

FORT ST. VRAIN NUCLEAR GENERATING STATION

RERP-HOME  
Attachment 3  
Issue 4  
Page 3 of 3

2. READ the NRC Operations Center all of the information recorded in Step A (Page 1 of this Attachment).
3. RECORD the following information:

Name of NRC Contact \_\_\_\_\_ Date/Time \_\_\_\_\_



NOTIFICATION TO ACTIVATE STATE EMERGENCY RESPONSE CENTERS

- A. The Emergency Coordinator will complete Pages 1 and 2 of this attachment with the assistance of the first management contact.

Required Information

1. This is \_\_\_\_\_ (Name) \_\_\_\_\_, Shift Supervisor at the Fort St. Vrain Station.
2. At \_\_\_\_\_ (Time) \_\_\_\_\_ we experienced an (ALERT, SITE AREA EMERGENCY, GENERAL EMERGENCY) Class incident.
3. a) There is NO, repeat NO, radioactive release taking place, and no special protective actions are recommended at this time.

OR

- b) A radioactive release IS, repeat IS, taking place, and we recommend that people in areas \_\_\_\_\_ remain indoors with windows and doors closed.

OR

- c) A radioactive release IS, repeat IS, taking place, and we recommend that evacuation of areas \_\_\_\_\_ be considered.
4. Further information on incident conditions will be provided in followup messages.

SUPPLEMENTAL INFORMATION

NOTE: This information is to be supplied to the NRC and the Colorado Department of Health when requested. The radiological data can be determined as specified in Section 2.2.1.2 of this procedure.

1. Date and Time of Incident \_\_\_\_\_
2. Class of emergency (ALERT)(SITE AREA EMERGENCY)  
(GENERAL EMERGENCY)
3. Type of release (airborne, waterborne, surface) \_\_\_\_\_
4. Current release rate:  
Noble Gas \_\_\_\_\_ Ci/sec Iodine \_\_\_\_\_ Ci/sec
5. Estimated curies released Noble Gas \_\_\_\_\_ Ci Iodine \_\_\_\_\_ Ci
6. Wind Velocity \_\_\_\_\_ MPH, from \_\_\_\_\_ degrees. Air Temp. \_\_\_\_\_ ° F.
7. Stability Category \_\_\_\_\_, Form of Precip. \_\_\_\_\_
8. Dose rate at EAB - WB \_\_\_\_\_ rem/hr Thyroid \_\_\_\_\_ rem/hr
9. Projected dose at EAB - WB \_\_\_\_\_ rem Thyroid \_\_\_\_\_ rem
10. Estimated accumulated dose at EAB-WB \_\_\_\_\_ rem Thyroid \_\_\_\_\_ rem
11. Estimate of any surface radioactive contamination \_\_\_\_\_  
\_\_\_\_\_
12. On-site response actions under way \_\_\_\_\_  
\_\_\_\_\_



PUBLIC SERVICE COMPANY OF COLORADO

FORT ST. VRAIN NUCLEAR GENERATING STATION

RERP-HOME  
Attachment 4  
Issue 4  
Page 3 of 4

13. Recommended Protective Action based on the projected dose at the EAB (NOTE: Refer to RERP-PAG):

Circle Appropriate Protective Actions  
and Read Aloud

Projected Dose (rem)	Recommended Protective Action
Whole Body <1 Thyroid <5	No planned protective actions. State may issue advisory to seek shelter and await instructions. Monitor radiation levels.
Whole Body 1 to 5 Thyroid 5 to 25	Take shelter and consider selective evacuation. Monitor radiation levels. Establish Controlled Area and limit access.
Whole Body 5 and above Thyroid 25 and above	Conduct mandatory evacuation. Monitor radiation levels and adjust area for mandatory evacuation based on these levels Control Access.

14. Prognosis for worsening of event \_\_\_\_\_

15. Date and time of report \_\_\_\_\_

B. The Emergency Coordinator will make notifications in sequence as follows:

PSC Company Operator  
or

- 1) INSTRUCT the Operator to initiate the "Fort St. Vrain Radiological Emergency Call List."
- 2) READ verbatim the information recorded in Part A (Page 1 of this attachment).
- 3) RECORD the following information:

Time PSC Operator Notified \_\_\_\_\_

Time Operator Callback Received \_\_\_\_\_





PUBLIC SERVICE COMPANY OF COLORADO

FORT ST. VRAIN NUCLEAR GENERATING STATION

RERP-HOME  
Attachment 4  
Issue 4  
Page 4 of 4

Weld County (911 Using Greeley Line)

- 1) READ verbatim the information recorded in Part A (Page 1 of this attachment).

- 2) RECORD the following information:

Time Weld County Notified \_\_\_\_\_

Time Weld County Callback Received \_\_\_\_\_

NRC OPERATIONS CENTER (HOT LINE OR (202) 951-0550)

(Use HP Network Line if NRC Hot Line and Land Line are inoperable.)

- 1) READ Items 1) through 4) from Part A.
- 2) READ the following sentences verbatim. "THIS EVENT IS BEING REPORTED PURSUANT TO 10-CFR50.72, ITEM NUMBER 1. WE ARE PRESENTLY ACTIVATING STATE AND LOCAL EMERGENCY RESPONSE CENTERS "
- 3) READ the supplemental information (Page 2 of this attachment).
- 4) RECORD the following information:

NAME of NRC Contact \_\_\_\_\_

TIME of NRC Contact \_\_\_\_\_



ECP DIRECTOR'S CALL LIST INTRUCTIONS

In the event that you are notified by the PSC operator that a Radiological ALERT or higher classification event has occurred at Fort St. Vrain, complete the following telephone calls:

1. If you are the response center/post Director:
  - a. Call your response center/post Alternate Director (the alternate will complete the calls on the attached list).
  - b. If you cannot contact your Alternate Director, call the first person on the attached list and inform him to complete the call list.
2. If you are the response center/post Alternate Director and are contacted by the Director:
  - a. Complete the attached call list.
3. If you are the response center/post Alternate Director and are contacted by the PSC Operator:
  - a. Call the first person on the attached list and inform him to complete the call list.



# PUBLIC SERVICE COMPANY OF COLORADO

FORT ST. VRAIN NUCLEAR GENERATING STATION

RERP-HOME  
Attachment 5  
Issue 4  
Page 2 of 2

## ECP DIRECTOR'S CALL LIST

First call all primaries, then call all alternates.

	<u>PSC</u> <u>Extension</u>	<u>Home</u>	<u>Time</u>
--	--------------------------------	-------------	-------------

### Manager - Technical Support

	Primary - J. R. Reesy		
	Alternate - Mike Holmes		

### Manager - Media Relations

	Primary - R. T. Person, Jr.		
	Alt. - W. D. Fitzmaurice		

### Manager - Resources

	Primary - D. D. Hock		
	Alternate - J. Bumpus		

### Manager - Security

	Primary - E. O'Neal		
	Alternate - Leonard Johnson		



# PUBLIC SERVICE COMPANY OF COLORADO

FORT ST. VRAIN NUCLEAR GENERATING STATION

RERP-HOME  
Attachment 6  
Issue 4  
Page 1 of 2

## CORPORATE EMERGENCY DIRECTOR'S CALL LIST INSTRUCTIONS

In the event that you are notified by the PSC operator that a Radiological ALERT or higher classification event has occurred at Fort St. Vrain, complete the following telephone calls:

1. If you are the response center/post Director:
  - a. Call your response center/post Alternate Director (the alternate will complete the calls on the attached list).
  - b. If you cannot contact your Alternate Director, call the first person on the attached list and inform him to complete the call list.
2. If you are the response center/post Alternate Director and are contacted by the Director:
  - a. Complete the attached list.
3. If you are the response center/post Alternate Director and are contacted by the PSC Operator:
  - a. Call the first person on the attached list and inform him to complete the call list.

CORPORATE EMERGENCY DIRECTOR'S CALL LIST (FCP)

First contact all primaries, then call all alternates.

ExtensionHomeTimeStation Technical Liaison

Primary - L. M. McBride

Alternate - J. W. Gahm

Radiological Assessment

Primary - T. Borst

Clerical Assistance

Primary - C. Stroh

Alternate - Sue Katcher

2nd Alt. - Laurie Banagas

Media Relations

Primary - M. McAdams

Alternate - S. Volsted



PCC DIRECTOR'S CALL LIST INSTRUCTIONS

In the event that you are notified by the PSC operator that a Radiological ALERT or higher classification event has occurred at Fort St. Vrain, complete the following telephone calls:

1. If you are the response center/post Director:
  - a. Call your response center/post Alternate Director (the alternate will complete the calls on the attached list).
  - b. If you cannot contact your Alternate Director, call the first person on the attached list and inform him to complete the call list.
2. If you are the response center/post Alternate Director and are contacted by the Director:
  - a. Complete the attached call list.
3. If you are the response center/post Alternate Director and are contacted by the PSC Operator:
  - a. Call the first person on the attached list and inform him to complete the call list.



PUBLIC SERVICE COMPANY OF COLORADO

FORT ST. VRAIN NUCLEAR GENERATING STATION

RERP-HOME  
Attachment 7  
Issue 4  
Page 2 of 3

PCC DIRECTOR'S CALL LIST

	<u>Plant Extension</u>	<u>Home</u>	<u>Time</u>
<u>Personnel Accountability and I &amp; C Technicians</u>			
	T. Bashline		
	P. Bearly		
	M. Benedict		
	M. Blossom		
I	P. Bollig		
	S. Caines		
	R. Erwin		
	M. Gale		
	C. Harding		
	K. Hays		
	W. Holcomb		
I	D. Horihan		
	T. McElwaine		
	G. Murphy		
I	M. Murphy		
	D. Nelson		
	G. Powers		
I	G. Redmond		
	R. Rivera		
	C. Stieff		
	J. Switzer		
	S. Willford		

Maintenance, Repair, and Damage Control

As Required - See RERP Phone Roster at end of procedure.

Hazards Control Team

D. Brown	
C. Schmidt	



# PUBLIC SERVICE COMPANY OF COLORADO

FORT ST. VRAIN NUCLEAR GENERATING STATION

RERP-HOME  
Attachment 7  
Issue 4  
Page 3 of 3

## Monitoring Teams - Health Physics

R. Hooper  
K. Latimer  
P. Morris  
E. J. O'Donoghue  
S. Rima  
D. Rozell  
S. Scruggs  
S. Sherrow

---

---

---

---

---

---

---

---

## Radiochemistry

V. McGaffic (P)  
D. Miller(A)  
S. Poet(A)  
M. Prochownik (A)

---

---

---

---

## Operating Staff Support

As Required - See RERP Phone Roster

## Telephone Console Operators

D. Edwards (P)  
S. Rozell (A)

---

---

## Maintenance (Electrical, Mechanical)

As required at the discretion of the PCC Director - Refer to RERP Phone Lists.





STATE EOC CALL LIST INSTRUCTIONS  
(For Contacts by PSC)

In the event you are notified by the PSC operator that a Radiological ALERT or higher classification event has occurred at Fort St. Vrain, complete the following telephone calls:

1. If you are the PSC primary contact:
  - a. Call the PSC alternate contact and instruct him to complete the call list.
  - b. If you cannot reach the PSC alternate contact, call the first person on the attached list and inform him to complete the call list.
2. If you are the PSC alternate contact and are notified by the PSC primary contact:
  - a. Complete the attached call list.
3. If you are the PSC alternate contact and are notified by the PSC operator:
  - a. Call the first person on the attached list and inform him to complete the call list.



PUBLIC SERVICE COMPANY OF COLORADO

FORT ST. VRAIN NUCLEAR GENERATING STATION

RERP-HOME  
Attachment 8  
Issue 4  
Page 2 of 2

STATE EOC CALL LIST  
(For Contacts by PSC)

	<u>Extension</u>	<u>Home</u>	<u>Time</u>
<u>Radiological Consultant</u>			
K. Schiager			_____
<u>Media Relations</u>			
R. A. Burns (Primary)			_____
G. Reeves (Alt.)			_____



TSC DIRECTOR'S CALL LIST INSTRUCTIONS

In the event that you are notified by the PSC operator that a Radiological ALERT or higher classification event has occurred at Fort St. Vrain, complete the following telephone calls:

1. If you are the response center/post Director:
  - a. Call your response center/post Alternate Director (the alternate will complete the calls on the attached list).
  - b. If you cannot contact you Alternate Director, call the first person on the attached list and inform him to complete the call list.
2. If you are the response center/post Alternate Director and are contacted by the Director:
  - a. Complete the attached call list.
3. If you are the response center/post Alternate Director and are contacted by the PSC Operator:
  - a. Call the first person on the attached list and inform him to complete the call list.



# PUBLIC SERVICE COMPANY OF COLORADO

FORT ST. VRAIN NUCLEAR GENERATING STATION

RERP-HOME  
Attachment 9  
Issue 4  
Page 2 of 3

## TSC DIRECTOR'S CALL LIST

First call all primaries, then call all alternates.

<u>Reactor Physics</u>	<u>Plant Extension</u>	<u>Home</u>	<u>Time</u>
Primary - C. Fuller			_____
Alternate - R. Heller			_____
Alternate - F. Novachek			_____
<u>Radiological Assessment</u>			
Primary - J. Sills			_____
	(Pager)		_____
<u>Plant Condition Assessment</u>			
Call two off-duty Shift Supervisors			
M. Deniston			_____
D. Evans			_____
W. Franklin			_____
J. Hak			_____
D. Hood			_____
H. O'Hagan			_____
G. Reigel			_____
J. VanDyke			_____
<u>Emergency Maintenance</u>			
Primary - W. Craine			_____
Alternate - J. Liebelt			_____
<u>Instrument and Control</u>			
Primary - B. Burchfield			_____
Alternate - J. Weller			_____
<u>Health Physics/Health Physicist</u>			
Primary - T. Schleiger			_____
Alternate - B. Woodard			_____
<u>Administration/Logistics</u>			
Primary - A. Kitzman			_____
Alternate - P. Collins			_____
Alternate - D. Merritt			_____



PUBLIC SERVICE COMPANY OF COLORADO

FORT ST. VRAIN NUCLEAR GENERATING STATION

RERP-HOME  
Attachment 9  
Issue 4  
Page 3 of 3

Computer Support

Primary - D. Klaus

Alternate - D. Bilstein

ATTACHMENT 10  
Facility Directors/Alternates

Extension	City	Home	Time
<u>Technical Support Center</u>			
a. Primary: D. W. Varenboug Alternate: E. D. Hill	Frederick Johnstown		
<u>Control Room Director</u>			
b. Primary: M. L. Block Alternate: None	Longmont		
<u>Personnel Control Center</u>			
c. Primary: J. Glass Alternate: R. E. Wadas	Brighton Johnstown		
<u>Forward Command Post</u>			
d. Primary: L. M. McBride Alternate: J. W. Gahn	Boulder Northglenn		
<u>Corporate Emergency Director</u>			
e. Primary: O. R. Lee Alternate: J. K. Fuller	Brighton Denver		
<u>Executive Command Post</u>			
f. Primary: R. F. Walker Alternate: B. O'Donnell	Denver Denver		
<u>State Emergency Operations Center</u>			
g. Primary: D. McNellis Alternate: H. L. Brey	Denver Broomfield		



PUBLIC SERVICE COMPANY OF COLORADO

FORT ST. VRAIN NUCLEAR GENERATING STATION

BOOK 3

2/16/83

NRC #9  
Ewerhnd

NON-CONTROLLED COPY

RADIOLOGICAL EMERGENCY RESPONSE PLAN - STATION

NO.	SUBJECT	ISSUE NUMBER	EFFECTIVE DATE
RERP-TSC	Technical Support Center Procedure	11	01-03-83
RERP CR-UE	Control Room Unusual Event Procedure	17	01-21-83
RERP-VC	Visitors Center Procedure	2	01-21-83
I RERP-PHONE LISTS		15	02-16-83



PUBLIC SERVICE COMPANY OF COLORADO

FORT ST. VRAIN NUCLEAR GENERATING STATION

RERP Phone Lists

Issue 15

Page 1 of 69

TITLE: RADIOLOGICAL EMERGENCY RESPONSE PLAN (RERP) PHONE LISTS

ISSUANCE  
AUTHORIZED  
BY

PORC  
REVIEW

**PORC 503 FEB 1 01983**

EFFECTIVE  
DATE

*Don W. Homburg*  
**2-16-83**

TABLE OF CONTENTS

	<u>Page</u>
1. Fort St. Vrain Phone System	2
2. RERP Phone List Index	3
3. Company Operator's Call List	5
4. ECP Director's Call List	8
5. FCP (CED's) Call List	10
6. PCC Director's Call List	12
7. State EOC Call List	15
8. TSC Director's Call List	17
9. Command Centers/Posts Numbers	20
10. Outside Assistance Numbers	24
11. Visitor's Center	26
12. RERP Phone List	27



FORT ST. VRAIN PHONE SYSTEMDIMENSION SYSTEM DIALING INSTRUCTIONSFrom Fort St. Vrain:

<u>Area to be Called</u>	<u>Proper Dialing Prefix</u>
Denver Exchange PSCo number Outside PSCo	Number + Number
Longmont Exchange	+ Number
Greeley Exchange	Number
All other areas <u>in</u> Colorado	+ Number + Authorization Code
Outside the State of Colorado (unless a toll free number)	+ Area Code + Number + Authorization Code

Paging Using Phone System:

To Page: Dial (all areas) or (in plant only)  
@ =  
whichever "@" is used, announce "CODE @" after  
page is complete, depress switch once, wait  
for answer.

To Answer: Dial #  
in place of "@", use whichever code number  
was announced.



RERP PHONE LIST INDEX

- A - Significant Event Notification to Nuclear Regulatory Commission
- B - Significant Event Notification to State of Colorado
- C - Significant Event Notification to American Nuclear Insurers
- D - Control Room Unusual Event Procedure
- E - Control Room Unusual Event Procedure, Attachment #1
- F - Control Room Unusual Event Procedure, Checklist #3
- G - Control Room Alert, Site Emergency, General Emergency Procedure
- H - Control Room Alert, Site Emergency, General Emergency Procedure, Attachment #1
- I - Personnel Control Center Procedure, Attachment #2
- J - PSC Company Operator Call List
- K - ECP Director's Call List
- L - Corporate Emergency Director's Call List
- M - PCC Director's Call List
- N - State EOC Call List
- O - TSC Director's Call List
- P - Centers/Posts Phone Numbers
- Q - Outside Assistance Phone Numbers
- R - Visitor Center Phone Numbers
- S - Fort St. Vrain Medical Emergency Plan
- T - Notification Procedure - Emergency Spills (G-5A)
- U - Automatic Dialing System (Shift Supervisor's Office and Control Room)
- V - Home Packet For Off-Shift Notifications (RERP-HOME), Table #1
- W - Home Packet For Off-Shift Notifications (RERP-HOME)  
Attachment #3



PUBLIC SERVICE COMPANY OF COLORADO

FORT ST. VRAIN NUCLEAR GENERATING STATION

RERP Phone Lists

Issue 15

Page 4 of 69

- | X - Home Packet For Off-Shift Notifications (RERP-HOME),  
| Attachment #4
- | Y - Home Packet For Off-Shift Notifications (RERP-HOME),  
| Attachment #10



RADIOLOGICAL EMERGENCY RESPONSE PLAN

PSC COMPANY OPERATOR CALL LIST

A. Obtain the following information from your contact at Fort St. Vrain.

a. Name and identity of caller: \_\_\_\_\_

b. Date/Time of event: \_\_\_\_\_

c. Classification of event (circle one):

Radiological Alert

Site Emergency

General Emergency

d. At the present time, a radiological release (circle one)  
IS/IS NOT occurring.

e. Location of the Personnel Control Center \_\_\_\_\_

B. Your Name: \_\_\_\_\_

Date/Time call was received: \_\_\_\_\_

PSC COMPANY OPERATOR CALL LIST (continued)

- C. Fill in the blanks of the following statement which will be read verbatim to the individuals on your call list using the above information.

READ SLOWLY

At approximately (b) \_\_\_\_\_ this date at the Fort St. Vrain Nuclear Generating Station near Platteville, Colorado, an event believed to involve a potential radiological hazard occurred. This event has been classified as a (c) \_\_\_\_\_. At the present time, a radiological release (circle one) IS/IS NOT occurring. The Personnel Control Center is to be established at (e) \_\_\_\_\_.

- D. IMMEDIATELY, (day or night) contact the following individuals and read them your prepared statement verbatim. Log the time each is reached.

1. Call Fort St. Vrain and verify the report:

a. Read your prepared statement VERBATIM.

2. Colorado State Health Department:

a. Duty Hours: \_\_\_\_\_

b. After duty hours: \_\_\_\_\_ (this is an answering service and they will contact the on-duty person at the State Health Department).

PSC COMPANY OPERATOR CALL LIST (Continued)

D. (Continued)

3. Contact one of each of the following pairs of primaries/alternates.

	Extension	City	Home	Time
a.	Primary: D. W. Warembourg Alternate: E. D. Hill	Frederick Johnstown		
b.	Primary: M. L. Block Alternate: None	Longmont		
c.	Primary: J. Glass Alternate: R. E. Wadas	Brighton Johnstown		
d.	Primary: L. M. McBride Alternate: J. W. Gahn	Boulder Northglenn		
e.	Primary: O. P. Lee Alternate: J. K. Fuller	Brighton Denver		
f.	Primary: R. F. Walker Alternate: B. O'Donnell	Denver Denver		
g.	Primary: D. McNeillis Alternate: H. L. Brey	Denver Broomfield		

4. Contact American Nuclear Insurers

5. Contact General Atomic Company

6. Contact one of the following at the Colorado State University Radiation Biology Department.

	Work	City	Home	Time
a.	Dr. James E. Johnson			
b.	Marion McDonald	Ft. Collins		
c.	Department Office	Ft. Collins		

7. Contact American Nuclear Society

8. NRC Resident Inspector - Office  
Primary: M. W. Dickerson  
Alternate: G. L. Plumlee,

9. Contact Institute of Nuclear Power Operations (INPO)

10. Contact PSC Fort St. Vrain Shift Supervisor at \_\_\_\_\_ to report results of telephone contacts above.



ECP DIRECTOR'S CALL LIST INTRUCTIONS

In the event that you are notified by the PSC operator that a Radiological ALERT or higher classification event has occurred at Fort St. Vrain, complete the following telephone calls:

1. If you are the response center/post Director:
  - a. Call your response center/post Alternate Director (the alternate will complete the calls on the attached list).
  - b. If you cannot contact your Alternate Director, call the first person on the attached list and inform him to complete the call list.
2. If you are the response center/post Alternate Director and are contacted by the Director:
  - a. Complete the attached call list.
3. If you are the response center/post Alternate Director and are contacted by the PSC Operator:
  - a. Call the first person on the attached list and inform him to complete the call list.

ECP DIRECTOR'S CALL LIST

First call all primaries, then call all alternates.

	<u>PSC</u> <u>Extension</u>	<u>Home</u>	<u>Time</u>
<u>Manager - Technical Support</u>			
Primary - J. R. Reesy			
Alternate - Mike Holmes			
<u>Manager - Media Relations</u>			
Primary - R. T. Person, Jr			
Alt. - W. D. Fitzmaurice			
<u>Manager - Resources</u>			
Primary - D. D. Hock			
Alternate - J. Bumpus			
<u>Manager - Security</u>			
Primary - E. O'Neal			
Alternate - Leonard Johnson			

Note: Any change to this call list requires a change be made to RERP-HOME, Attachment #5.





CORPORATE EMERGENCY DIRECTOR'S CALL LIST INSTRUCTIONS

In the event that you are notified by the PSC operator that a Radiological ALERT or higher classification event has occurred at Fort St. Vrain, complete the following telephone calls:

1. If you are the response center/post Director:
  - a. Call your response center/post Alternate Director (the alternate will complete the calls on the attached list).
  - b. If you cannot contact your Alternate Director, call the first person on the attached list and inform him to complete the call list.
2. If you are the response center/post Alternate Director and are contacted by the Director:
  - a. Complete the attached list.
3. If you are the response center/post Alternate Director and are contacted by the PSC Operator:
  - a. Call the first person on the attached list and inform him to complete the call list.

CORPORATE EMERGENCY DIRECTOR'S CALL LIST (FCP)

First contact all primaries, then call all alternates.

ExtensionHomeTimeStation Technical Liaison

Primary - L. M. McBride

Alternate - J. W. Gahm

Radiological Assessment

Primary - T. Borst

Clerical Assistance

Primary - C. Stroh

Alternate - Sue Katcher

2nd Alt. - Laurie Banagas

Media Relations

Primary - M. McAdams

Alternate - S. Volsted

Note: Any change to this call list requires a change be made to RERP-HOME, Attachment #0.



PCC DIRECTOR'S CALL LIST INSTRUCTIONS

In the event that you are notified by the PSC operator that a Radiological ALERT or higher classification event has occurred at Fort St. Vrain, complete the following telephone calls:

1. If you are the response center/post Director:
  - a. Call your response center/post Alternate Director (the alternate will complete the calls on the attached list).
  - b. If you cannot contact your Alternate Director, call the first person on the attached list and inform him to complete the call list.
2. If you are the response center/post Alternate Director and are contacted by the Director:
  - a. Complete the attached call list.
3. If you are the response center/post Alternate Director and are contacted by the PSC Operator:
  - a. Call the first person on the attached list and inform him to complete the call list.



PCC DIRECTOR'S CALL LIST

	<u>Plant Extension</u>	<u>Home</u>	<u>Time</u>
<u>Personnel Accountability and I &amp; C Technicians</u>			
T. Bashline			_____
P. Bearly			_____
M. Benedict			_____
M. Blossom			_____
P. Bollig			_____
S. Caines			_____
R. Erwin			_____
M. Gale			_____
C. Harding			_____
K. Hays			_____
W. Holcomb			_____
D. Horihan			_____
T. McElwaine			_____
G. Murphy			_____
M. Murphy			_____
D. Nelson			_____
G. Powers			_____
G. Redmond			_____
R. Rivera			_____
C. Stieff			_____
J. Switzer			_____
S. Willford			_____

Maintenance, Repair, and Damage Control

As Required - See RERP Phone Roster at end of procedure.

Hazards Control Team

D. Brown	_____
C. Schmidt	_____



Monitoring Teams - Health Physics

R. Hooper  
K. Lalimer  
P. Morris  
E. J. O'Donoghue  
S. Rima  
D. Rozell  
S. Scruggs  
S. Sherrow

\_\_\_\_\_  
\_\_\_\_\_  
\_\_\_\_\_  
\_\_\_\_\_  
\_\_\_\_\_  
\_\_\_\_\_  
\_\_\_\_\_  
\_\_\_\_\_

Radiochemistry

V. McGaffic (P)  
D. Miller(A)  
S. Poet (A)  
M. Prochownik (A)

\_\_\_\_\_  
\_\_\_\_\_  
\_\_\_\_\_  
\_\_\_\_\_

Operating Staff Support

As Required - See RERP Phone Roster

Telephone Console Operators

D. Edwards (P)  
S. Rozell (A)

\_\_\_\_\_  
\_\_\_\_\_

Maintenance (Electrical, Mechanical)

As required at the discretion of the PCC Director - Refer to  
RERP Phone Lists.

Note: Any change to this call list requires a change be made to  
RERP-HOME, Attachment #7.



STATE EOC CALL LIST INSTRUCTIONS  
(For Contacts by PSC)

In the event you are notified by the PSC operator that a Radiological ALERT or higher classification event has occurred at Fort St. Vrain, complete the following telephone calls:

1. If you are the PSC primary contact:
  - a. Call the PSC alternate contact and instruct him to complete the call list.
  - b. If you cannot reach the PSC alternate contact, call the first person on the attached list and inform him to complete the call list.
2. If you are the PSC alternate contact and are notified by the PSC primary contact:
  - a. Complete the attached call list.
3. If you are the PSC alternate contact and are notified by the PSC operator:
  - a. Call the first person on the attached list and inform him to complete the call list.

STATE EOC CALL LIST  
(For Contacts by PSC)

	<u>Extension</u>	<u>Home</u>	<u>Time</u>
<u>Radiological Consultant</u>			
Janet Johnson			_____
<u>Media Relations</u>			
R. A. Burns (Primary)			_____
G. Reeves (Alt.)			_____

Note: Any change to this call list requires a change be made to  
RERP-HOME, Attachment #8.



TSC DIRECTOR'S CALL LIST INSTRUCTIONS

In the event that you are notified by the PSC operator that a Radiological ALERT or higher classification event has occurred at Fort St. Vrain, complete the following telephone calls:

1. If you are the response center/post Director:
  - a. Call your response center/post Alternate Director (the alternate will complete the calls on the attached list).
  - b. If you cannot contact you Alternate Director, call the first person on the attached list and inform him to complete the call list.
2. If you are the response center/post Alternate Director and are contacted by the Director:
  - a. Complete the attached call list.
3. If you are the response center/post Alternate Director and are contacted by the PSC Operator:
  - a. Call the first person on the attached list and inform him to complete the call list.





TSC DIRECTOR'S CALL LIST

First call all primaries, then call all alternates.

<u>Reactor Physics</u>	<u>Plant Extension</u>	<u>Home</u>	<u>Time</u>
Primary - C. Fuller			_____
Alternate - R. Heller			_____

Radiological Assessment

Primary - J. Sills			_____
Alternate - J. Eggebroten			_____
Alternate - F. Novachek			_____

Plant Condition Assessment

Call two off-duty Shift Supervisors

M. Deniston			_____
D. Evans			_____
W. Franklin			_____
J. Hak			_____
D. Hood			_____
H. O'Hagan			_____
G. Reigel			_____
J. VanDyke			_____

Emergency Maintenance

Primary - W. Craine			_____
Alternate - J. Liebelt			_____

Instrument and Control

Primary - B. Burchfield			_____
Alternate - J. Weller			_____

Health Physics/Health Physicist

Primary - T. Schleiger			_____
Alternate - B. Woodard			_____



Administration/Logistics

Primary - A. Kitzman

Alternate - P. Collins

Alternate - D. Merritt

\_\_\_\_\_  
\_\_\_\_\_  
\_\_\_\_\_

Computer Support

Primary - D. Klaus

Alternate - D. Bilstein

\_\_\_\_\_  
\_\_\_\_\_

Note: Any changes made to this call list requires a change be made to  
RERP-HOME, Attachment #9.

CENTERS/POSTS PHONE NUMBERS \*Control Room (CR)Phone  
Lists Affected

Denver Line  
Greeley Line  
Longmont Line  
Site Extension  
Site Extension

P  
P  
P  
P  
P

Executive Command Post (ECP)Headquarters Building - Room 620

Denver Line  
Denver Line  
Denver Line

P  
P  
P

Lookout Center - Golden

Denver Line  
Denver Line

P  
P

Emergency Operations Center - State (SEOC)Camp George West

Denver Line  
Denver Line

P  
B, D, P, E, U, W

Forward Command Post (FCP)Fort Lupton

Denver Line

P

Ft. Lupton Line

P

\* For any call into FSV from another PSC dimension phone, dial  
, where xxx is the three digit FSV extension.

\*\* This line reserved for conferencing between the FCP AND ECP.



PUBLIC SERVICE COMPANY OF COLORADO

FORT ST. VRAIN NUCLEAR GENERATING STATION

RERP Phone Lists

Issue 15

Page 21 of 69

Governor

Office  
Mansion

B,D,P,E,W  
B,D,P,E,U,W

CENTERS/POSTS PHONE NUMBERSPersonnel Control CentersPhone  
Lists AffectedOnsiteEngineering/QA Complex

Site Extension

P

Warehouse

Site Extension

P

Site Extension

P

GA Field Office

Site Extension

P

Greeley Line

(Ext

P

Craft Shops

Site Extension

P

OffsiteJohnstown County Shop

Greeley Line

P

County Engineer, Drew Scheltinga

P

District Foreman, John Noyes

P

Maintenance Supervisor, Bud Schmuhl

P

Area Supervisor,

Road Maintenance, Dean Jackson

P

Production Manager, Dave Becker

P

Longmont PSC Service Center

Denver Line (Louisville)

P

Longmont Line

P

Platteville Fire Department

Greeley Line

P,Q

Contact Cliff Wright, Greeley Line

P,Q

Weld County, Maintenance

P



CENTERS/POSTS PHONE NUMBERS

Technical Support Center

Phone  
Lists Affected

Site Extension  
Site Extension  
Site Extension  
Site Extension  
Site Extension  
Site Extension

P  
P  
P  
P  
P  
P

OUTSIDE ASSISTANCE PHONE NUMBERS

<u>Ambulance Services</u>	<u>Phone Lists Affected</u>
Platteville Fire Department (Platteville)	Q
(Greeley Line)	Q
Professional Ambulance Service (Longmont)	Q
Weld County Ambulance Service (Greeley)	Q
St. Lukes Helicopter (ask for Admitting)	Q
	Q
or Emergency:	Q
<u>Fire Departments</u>	
Fort Lupton	P,Q
Johnstown	Q
Platteville	P,Q
<u>Medical Facilities</u>	
St. Luke's Hospital (Denver)	Q,S
	Q,S
	Q,S
North Colorado Medical Center (Greeley)	Q,S
Memorial Hospital (Greeley)	Q,S
Longmont United Hospital (Longmont)	Q,S
Emergency:	Q,S
<u>National Weather Service</u>	
Ask for LEAD Forecaster	Q
	Q
<u>Institute of Nuclear Power Operations (INPO)</u>	Q,J
	Q,J
<u>NRC Operations Center</u>	A,D,E,G,H, Q,U,W,X A,D,Q A,D,Q

OUTSIDE ASSISTANCE PHONE NUMBERSPhone  
Lists AffectedBackup Meteorological Tower Data (NOAA)

Bob Clark  
Christopher Murdock or Pat Murray  
Silent 700-300 Baud Modem \*  
Laboratory  
Administrative Office

Q  
Q  
Q  
Q  
Q

\* To have line cleared when busy, call Mr. Val Swarcz (SERI) at  
County Sheriff

City Police

Johnstown  
Platteville

Q  
  
Q  
Q

State Patrol

Q  
Q

Coast Guard

Q,T

Colorado State Health Department

J,Q,T

Environmental Protection Agency

Q,T

American Nuclear Insurers (ANI)

C,J,Q,U  
C,Q,U,J

American Nuclear Society

J,Q



VISITOR CENTER PHONE NUMBERS

	<u>Phone Lists Affected</u>
Site Extension	R R

Persons Living Within Property Boundary\*

Ben Houston	R, I
Richard Hergert	R, I
Raymond Marin	R, I
Scott Houston	R, I
Keith Russell	R, I
Carlos Jaramillo	R, I
Randy Russell	R, I
Bill Pitt	R, I
Randy Brossman	R, I

\* When these telephone numbers are verified, updates must be reflected in the PCC Procedure, Attachment 5.

ADMINISTRATIVE \*Phone  
Lists Affected

BORST, F.J.

Loveland

(Home)  
(Work)  
(Page Number)

Assigned To: FCP

A,B,C,D,F  
G,L,S,U,V\*

BREY, H.L.

Broomfield

(Home)  
(Work)

Assigned To: SEOC

J,Y

BUMPUS, J.N.

Lakewood

(Home)  
(Work)

Assigned To: ECP

K

BURNS, R.A.

Denver

(Home)  
(Work)

Assigned To: SEOC

B,F,N,S

FITZMAURICE, W.

Denver

(Home)  
(Work)

Assigned To: ECP

B,K,S

\* NOTE: Calls to PSC phones from outside of the PSC telephone system may require use of a different telephone exchange. For those cases, the exchange for direct dial from any outside line is given in parentheses to the left of the PSC system exchange. Telephone calls to FSV personnel from other PSC telephones is by dialing xxx, where xxx is the three digit work extension, or by dialing and using the switchboard operator.

ADMINISTRATIVE \*Phone  
Lists AffectedFULLER, J.K.  
Denver(Home)  
(Work)

Assigned To: FCP

J,Y

HILL, E.D.

Johnstown

(Home)  
(Work)  
(Page Number)

Assigned To: TSC

A,B,C,D,  
F,G,J,S,  
T,U,V,YHOCK, D.D.  
Denver(Home)  
(Work)

Assigned To: ECP

K

HOLMES, M.H.  
Lakewood(Home)  
(Work)

Assigned to: ECP

K

GAHM, J. W.  
Northglenn(Home)  
(Work)

Assigned To: FCP

J,L,U,Y

\* NOTE: Calls to PSC phones from outside of the PSC telephone system may require use of a different telephone exchange. For those cases, the exchange for direct dial from any outside line is given in parentheses to the left of the PSC system exchange. Telephone calls to FSV personnel from other PSC telephones is by dialing xx, where xxx is the three digit work extension, or by dialing - and using the switchboard operator.

ADMINISTRATIVE \*Phone  
Lists AffectedJOHNSON, L.  
Denver

K,S

(Home)  
(Work)

Assigned To: ECP

LEE, O.R.

A,B,C,D,  
F,G,J,S,  
T,V,Y

Brighton

(Home)  
(Work)  
(Alternate)

Assigned To: FCP

McADAMS, MARILY  
Denver

F,L,S

(Home)  
(Work)

Assigned To: FCP

McBRIDE, L.M.

A,B,C,D,  
F,G,J,L,  
S,U,V,Y

Boulder

(Home)  
(Work)  
(Page Number)

Assigned To: FCP

McNELLIS, D.  
Denver

J,Y

(Home)  
(Work)

Assigned To: SEOC

\* NOTE: Calls to PSC phones from outside of the PSC telephone system may require use of a different telephone exchange. For those cases, the exchange for direct dial from any outside line is given in parentheses to the left of the PSC system exchange. Telephone calls to FSV personnel from other PSC telephones is by dialing xxx, where xxx is the three digit work extension, or by dialing and using the switchboard operator.



# PUBLIC SERVICE COMPANY OF COLORADO

FORT ST. VRAIN NUCLEAR GENERATING STATION

RERP PHONE LISTS

Issue 15

Page 30 of 69

## ADMINISTRATIVE \*

### Phone Lists Affected

O'DONNELL, B.  
Denver

J,Y

(Home)  
(Work)

Assigned To: ECP

O'NEAL, E. E.  
Denver

K,S

(Home)  
(Work)

Assigned To: ECP

PERSON, R.T., JR.  
Denver

K

(Home)  
(Work)

Assigned To: ECP

REESY, JACK R.  
Denver

K

(Home)  
(Work)

Assigned To: ECP

REEVES, G.D.  
Arvada

B,F,N,S

(Home)  
(Work)

Assigned To: SEOC

VOLSTAD, STEPHEN A.  
Denver

L

(Home)  
(Work)

Assigned To: FCP

\* NOTE: Calls to PSC phones from outside of the PSC telephone system may require use of a different telephone exchange. For those cases, the exchange for direct dial from any outside line is given in parentheses to the left of the PSC system exchange. Telephone calls to FSV personnel from other PSC telephones is by dialing xxx, where xxx is the three digit work extension, or by dialing and using the switchboard operator.

ADMINISTRATIVE \*Phone  
Lists Affected

WALKER, R.F.  
Denver

J,Y

(Home)

(Work)

Assigned To: ECP

WAREMBOURG, D.W.

A,B,C,D

F,G,J,S

T,U,V,Y

Frederick

(Home)

(Work)

(Page Number)

Assigned To: TSC

\* NOTE: Calls to PSC phones from outside of the PSC telephone system may require use of a different telephone exchange. For those cases, the exchange for direct dial from any outside line is given in parentheses to the left of the PSC system exchange. Telephone calls to FSV personnel from other PSC telephones is by dialing .x, where xxx is the three digit work extension, or by dialing and using the switchboard operator.

CHEMISTRYPhone  
Lists AffectedFETTEROLF, DAVE L.  
Greeley

(Home)

(Work)

Assigned To: NONE

LUCERO, VICTOR A.  
Greeley

(Home)

(Work)

Assigned To: NONE

MILLER, STEPHEN J.  
Denver

(Home)

(Work)

Assigned To: NONE

SIMPSON, GAIL  
Denver

(Home)

(Work)

Assigned To: NONE

VOLZ, THERESA K.  
Longmont

(Home)

(Work)

Assigned To: NONE

\* NOTE: Calls to PSC phones from outside of the PSC telephone system may require use of a different telephone exchange. For those cases, the exchange for direct dial from any outside line is given in parentheses to the left of the PSC system exchange. Telephone calls to FSV personnel from other PSC telephones is by dialing - xx, where xxx is the three digit work extension, or by dialing , and using the switchboard operator.



# PUBLIC SERVICE COMPANY OF COLORADO

FORT ST. VRAIN NUCLEAR GENERATING STATION

RERP PHONE LISTS

Issue 15

Page 33 of 69

## CLERICAL

### Phone Lists Affected

BOLLIG, PATRICIA L.  
Evans

M

(Home)

(Work)

Assigned To: PCC

CAINES, SUSAN  
Windsor

M

(Home)

(Work)

Assigned To: PCC

COLLINS, MARGARET O.  
Johnstown

O

(Home)

(Work)

Assigned to: TSC

EDWARDS, DONNA  
Loveland

M

(Home)

(Work)

Assigned To: TELEPHONE CONSOLE

JONES, TERRI  
Platteville  
None

(Home)

(Work)

Assigned To: NONE

KATCHER, SUE M.  
Greeley

L

(Home)

(Work)

Assigned To: FCP

\* NOTE: Calls to PSC phones from outside of the PSC telephone system may require use of a different telephone exchange. For those cases, the exchange for direct dial from any outside line is given in parentheses to the left of the PSC system exchange. Telephone calls to FSV personnel from other PSC telephones is by dialing xxx, where xxx is the three digit work extension, or by dialing and using the switchboard operator.



CLERICALPhone  
Lists AffectedKITZMAN, AUDREY L.  
Platteville

O

(Home)

(Work)

Assigned To: TSC

MERRITT, DARLA  
Gilcrest

O

(Home)

(Work)

Assigned To: TSC

ROZELL, SUSAN  
Platteville

M

(Home)

(Work)

Assigned To: TELEPHONE CONSOLE

STIEFF, CAROLE  
Platteville

M

(Home)

(Work)

Assigned To: PCC

STROH, CARLENE  
Johnstown

(Home)

(Work)

Assigned To: NONE

WAREMBOURG, MICHELLE  
Greeley

(Home)

(Work)

Assigned To: NONE

\* NOTE: Calls to PSC phones from outside of the PSC telephone system may require use of a different telephone exchange. For those cases, the exchange for direct dial from any outside line is given in parentheses to the left of the PSC system exchange. Telephone calls to FSV personnel from other PSC telephones is by dialing xxx, where xxx is the three digit work extension, or by dialing and using the switchboard operator.

COMPUTER SERVICESPhone  
Lists AffectedBILSTEIN, DON  
Berthoud

0

(Home)

(Work)

Assigned To: TSC

GILLILAND, GERARD  
Broomfield

(Home)

(Work)

Assigned To: NONE

HALOIN, DON  
Greeley

(Home)

(Work)

Assigned To: NONE

KLAUS, DON L.  
Broomfield

0

(Home)

(Work)

Assigned To: TSC

\* NOTE: Calls to PSC phones from outside of the PSC telephone system may require use of a different telephone exchange. For those cases, the exchange for direct dial from any outside line is given in parentheses to the left of the PSC system exchange. Telephone calls to FSV personnel from other PSC telephones is by dialing xx, where xxx is the three digit work extension, or by dialing , and using the switchboard operator.

ELECTRICPhone  
Lists AffectedALLOMONG, EUGENE C.  
Arvada

(Home)

(Work)

Assigned To: NONE

ANDERSON, BRAD  
Westminster

(Home)

(Work)

Assigned To: NONE

BRUXVOORT, MARVIN J.  
Loveland

(Home)

(Work)

Assigned To: NONE

LAMB, ROBERT E.  
Longmont

(Home)

(Work)

Assigned To: NONE

U

\* NOTE: Calls to PSC phones from outside of the PSC telephone system may require use of a different telephone exchange. For those cases, the exchange for direct dial from any outside line is given in parentheses to the left of the PSC system exchange. Telephone calls to FSV personnel from other PSC telephones is by dialing xx, where xxx is the three digit work extension, or by dialing and using the switchboard operator.

MAINTENANCEPhone  
Lists Affected

ADAMS, DENNIS R.

Longmont

(Home)

(Work)

Assigned To: NONE

AMEN, TOM

Greeley

(Home)

(Work)

Assigned To: NONE

BASS, ROY J., JR.

Thornton

(Home)

(Work)

Assigned To: NONE

BATES, G. DEXTER

Greeley

(Home)

(Work)

Assigned To: NONE

BISHARD, LEVI V.

Northglenn

(Home)

(Work)

Assigned To: NONE

BURNETT, RANDALL

Brighton

(Home)

(Work)

Assigned To: NONE

\* NOTE: Calls to PSC phones from outside of the PSC telephone system may require use of a different telephone exchange. For those cases, the exchange for direct dial from any outside line is given in parentheses to the left of the PSC system exchange. Telephone calls to FSV personnel from other PSC telephones is by dialing xxx, where xxx is the three digit work extension, or by dialing and using the switchboard operator.



# PUBLIC SERVICE COMPANY OF COLORADO

FORT ST. VRAIN NUCLEAR GENERATING STATION

RERP PHONE LISTS

Issue 15

Page 38 of 69

## MAINTENANCE

### Phone Lists Affected

BURTIS, JOHN R.  
Fort Lupton

(Home)

(Work)

Assigned To: NONE

CLARK, ARTHUR L.  
Berthoud

(Home)

(Work)

Assigned To: NONE

CLAYTON, DWIGHT  
Longmont

(Home)

(Work)

Assigned To: NONE

COGDILL, LARRY  
Berthoud

(Home)

(Work)

Assigned To: NONE

CRAINE, WARD A.  
Loveland

(Home)

(Work)

(Page Number)

Assigned To: TSC

O,U

DAVIS, JENNIFER  
Platteville

(Home)

(Work)

Assigned To: NONE

\* NOTE: Calls to PSC phones from outside of the PSC telephone system may require use of a different telephone exchange. For those cases, the exchange for direct dial from any outside line is given in parentheses to the left of the PSC system exchange. Telephone calls to FSV personnel from other PSC telephones is by dialing xxx, where xxx is the three digit work extension, or by dialing and using the switchboard operator.

MAINTENANCEPhone  
Lists AffectedDESANTI, ROCKY  
Brighton(Home)  
(Work)

Assigned to: NONE

DIXON, GEORGE D.  
Lonamont(Home)  
(Work)

Assigned To: NONE

DOPKE, STEVEN E.  
Loveland(Home)  
(Work)

Assigned To: NONE

FORREST, DEAN  
Firestone(Home)  
(Work)

Assigned To: NONE

GOODMAN, MICHAEL J.  
Platteville(Home)  
(Work)

Assigned To: NONE

GUILLEN, ANTHONY  
Lonamont(Home)  
(Work)

Assigned To: NONE

\* NOTE: Calls to PSC phones from outside of the PSC telephone system may require use of a different telephone exchange. For those cases, the exchange for direct dial from any outside line is given in parentheses to the left of the PSC system exchange. Telephone calls to FSV personnel from other PSC telephones is by dialing xxx, where xxx is the three digit work extension, or by dialing the switchboard operator.

MAINTENANCEPhone  
Lists AffectedHALVERSON, JOHN  
Johnstown

(Home)

(Work)

Assigned To: NONE

HOHN, JOHN  
Platteville

(Home)

(Work)

Assigned To: NONE

HOOD, GREG  
Lyons

(Home)

(Work)

Assigned To: NONE

HORIHAN, DEVIN P.  
Longmont

(Home)

(Work)

Assigned To: NONE

KARICH, JACK  
Platteville

(Home)

(Work)

Assigned To: NONE

KRUSE, QUENTIN L.  
Brighton

(Home)

(Work)

Assigned To: NONE

\* NOTE: Calls to PSC phones from outside of the PSC telephone system may require use of a different telephone exchange. For those cases, the exchange for direct dial from any outside line is given in parentheses to the left of the PSC system exchange. Telephone calls to FSV personnel from other PSC telephones is by dialing xxx, where xxx is the three digit work extension, or by dialing and using the switchboard operator.

MAINTENANCEPhone  
Lists AffectedLEWIS, ORVAL A.  
Commerce City

(Home)

(Work)

Assigned To: NONE

LIEBELT, JAMES H.  
Berthoud

(Home)

(Work)

(Page Number)

Assigned To: TSC

O,U

MANENTI, THOMAS  
Greeley

(Home)

(Work)

Assigned To: NONE

MEDBERY, GERALD D.  
Greeley

(Home)

(Work)

Assigned To: NONE

MEIER, EDWARD J.  
Denver

(Home)

(Work)

Assigned To: NONE

\* NOTE: Calls to PSC phones from outside of the PSC telephone system may require use of a different telephone exchange. For those cases, the exchange for direct dial from any outside line is given in parentheses to the left of the PSC system exchange. Telephone calls to FSV personnel from other PSC telephones is by dialing xx, where xxx is the three digit work extension, or by dialing , and using the switchboard operator.



MAINTENANCEPhone  
Lists AffectedMONTOKA, JOHN P.  
Platteville

(Home)

(Work)

Assigned To: NONE

MORGAN, GREGORY R.  
Greeley

(Home)

(Work)

Assigned To: NONE

OWEN, JON E.  
Johnstown  
7-1111

(Home)

(Work)

Assigned To: NONE

RHOTON, MICHAEL A.  
Northglenn

(Home)

(Work)

Assigned To: NONE

ROWELL, ROBERT L.  
Platteville

(Home)

(Work)

Assigned to: NONE

SCHUYLER, TIMOTHY LEE  
Brighton

(Home)

(Work)

Assigned To: NONE

\* NOTE: Calls to PSC phones from outside of the PSC telephone system may require use of a different telephone exchange. For those cases, the exchange for direct dial from any outside line is given in parentheses to the left of the PSC system exchange. Telephone calls to FSV personnel from other PSC telephones is by dialing xxx, where xxx is the three digit work extension, or by dialing and using the switchboard operator.

MAINTENANCEPhone  
Lists AffectedSKAGGS, EDWARD ROY  
Greelev(Home)  
(Work)

Assigned To: NONE

SKELLY, GREGORY J.  
Arvada(Home)  
(Work)

Assigned To: NONE

SMITH, ROGER LEE  
Platteville(Home)  
(Work)

Assigned To: NONE

SMOOT, GREGORY ALAN  
Longmont(Home)  
(Work)

Assigned To: NONE

SNYDER, JERRY  
Greelev(Home)  
(Work)

Assigned To: NONE

TREGONING, WILLIAM E.  
Johnstown(Home)  
(Work)

Assigned To: NONE

\* NOTE: Calls to PSC phones from outside of the PSC telephone system may require use of a different telephone exchange. For those cases, the exchange for direct dial from any outside line is given in parentheses to the left of the PSC system exchange. Telephone calls to FSV personnel from other PSC telephones is by dialing xxx, where xxx is the three digit work extension, or by dialing and using the switchboard operator.



PUBLIC SERVICE COMPANY OF COLORADO

FORT ST. VRAIN NUCLEAR GENERATING STATION

RERP PHONE LISTS

Issue 15

Page 44 of 69

MAINTENANCE

Phone  
Lists Affected

WEBB, RONALD W.  
Longmont

U

(Home)  
(Work)  
(Page Number)

Assigned To: NONE

WEILNAU, LARRY L.  
Platteville

(Home)  
(Work)

Assigned To: NONE

WERNESSE, STEPHEN J.  
Longmont

(Home)  
(Work)

Assigned To: NONE

WINDHORST, WILLIAM  
Platteville

(Home)  
(Work)

Assigned To: NONE

WYATT, RONALD  
Greeley

(Home)  
(Work)

Assigned To: NONE

YODER, FRED  
Johnstown

(Home)  
(Work)

Assigned To: NONE

\* NOTE: Calls to PSC phones from outside of the PSC telephone system may require use of a different telephone exchange. For those cases, the exchange for direct dial from any outside line is given in parentheses to the left of the PSC system exchange. Telephone calls to FSV personnel from other PSC telephones is by dialing xx, where xxx is the three digit work extension, or by dialing and using the switchboard operator.



# PUBLIC SERVICE COMPANY OF COLORADO

FORT ST. VRAIN NUCLEAR GENERATING STATION

RERP PHONE LISTS

Issue 15

Page 45 of 69

## MAINTENANCE Q.C.

### Phone Lists Affected

BASHLINE, TERRILL G.  
Windsor

M

(Home)

(Work)

Assigned To: PCC

GALE, MICHAEL F.  
Gilcrest

M

(Home)

(Work)

Assigned To: PCC

MCELWAIN, THOMAS  
Aurora

M

(Home)

(Work)

Assigned To: PCC

MURPHY, GERALD J.  
Platteville

M

(Home)

(Work)

Assigned To: PCC

REDMOND, GEORGE  
Evans

M

(Home)

(Work)

Assigned To: PCC

\* NOTE: Calls to PSC phones from outside of the PSC telephone system may require use of a different telephone exchange. For those cases, the exchange for direct dial from any outside line is given in parentheses to the left of the PSC system exchange. Telephone calls to FSV personnel from other PSC telephones is by dialing xxx, where xxx is the three digit work extension, or by dialing the switchboard operator.



PUBLIC SERVICE COMPANY OF COLORADO

FORT ST. VRAIN NUCLEAR GENERATING STATION

RERP PHONE LISTS

Issue 15

Page 46 of 69

MISCELLANEOUS

Phone  
Lists Affected

DICKERSON, M.W.  
Longmont

B,D,F,J,U

(Home)

(Work)

Assigned To: NONE

JOHNSON, JAMES E.  
Ft. Collins

J

(Home)

(Work)

Assigned To: NONE

JOHNSON, JANET  
Ft. Collins

N

(Home)

(Work)

Assigned To: SEOC

OLSON, HILDING G.  
Fort Collins

(Home)

(Work)

Assigned To: NONE

McDONALD, MARION  
Ft. Collins

J

(Home)

(work)

Assigned To: NONE

PLUMLEE, G.L., III  
Longmont

B,D,F,J

(Home)

(Work)

Assigned To: NONE

\* NOTE: Calls to PSC phones from outside of the PSC telephone system may require use of a different telephone exchange. For those cases, the exchange for direct dial from any outside line is given in parentheses to the left of the PSC system exchange. Telephone calls to FSV personnel from other PSC telephones is by dialing xx, where xxx is the three digit work extension, or by dialing , and using the switchboard operator.

OPERATIONSPhone  
Lists Affected

ASHMORE, WILLARD J.  
Platteville

(Home)

(Work)

Assigned To: NONE

BLOCK, M. L.

A, B, C, D,  
F, G, J, T,  
U, V, Y

Longmont

f

(Home)

(Work)

Page Number

Assigned To: CR

DAHLSTROM, JOHN  
Greeley

(Home)

(Work)

Assigned To: NONE

DECATOIRE, DAVID A.  
Johnstown

(Home)

(Work)

Assigned To: NONE

DENISTON, MARTIN E.  
Longmont

O, U

(Home)

(Work)

Assigned To: TSC

\* NOTE: Calls to PSC phones from outside of the PSC telephone system may require use of a different telephone exchange. For those cases, the exchange for direct dial from any outside line is given in parentheses to the left of the PSC system exchange. Telephone calls to FSV personnel from other PSC telephones is by dialing xxx, where xxx is the three digit work extension, or by dialing and using the switchboard operator.

OPERATIONSPhone  
Lists Affected

DICE, THOMAS J.

Loveland

(Home)

(Work)

Assigned To: NONE

EINIG, KENNETH J.

Longmont

(Home)

(Work)

Assigned To: NONE

EVANS, CHRISTOPHER J.

Milliken

(Home)

(Work)

Assigned To: NONE

| EVANS, DENNIS W.

Longmont

(Home)

(Work)

Assigned To: TSC

O,U

FIELDS, M.D.

Greeley

(Home)

(Work)

Assigned To: NONE

FISHER, JEFFREY

Greeley

(Home)

(Work)

Assigned To: NONE

\* NOTE: Calls to PSC phones from outside of the PSC telephone system may require use of a different telephone exchange. For those cases, the exchange for direct dial from any outside line is given in parentheses to the left of the PSC system exchange. Telephone calls to FSV personnel from other PSC telephones is by dialing xxx, where xxx is the three digit work extension, or by dialing and using the switchboard operator.



# PUBLIC SERVICE COMPANY OF COLORADO

FORT ST. VRAIN NUCLEAR GENERATING STATION

RERP PHONE LISTS

Issue 15

Page 49 of 69

## OPERATIONS

Phone  
Lists Affected

FOSTER, KENT E.  
Lonamont

(Home)

(Work)

Assigned To: NONE

| FRANKLIN, WILBUR H.  
Lonamont

(Home)

(Work)

Assigned To: TSC

O,U

FRAZIER, MICHAEL S.  
Northalenn

(Home)

(Work)

Assigned To: NONE

FROST, BRIAN C.  
Henderson

(Home)

(Work)

Assigned To: NONE

HACKETT, LANE L., JR.  
Greelev

(Home)

(Work)

Assigned To: NONE

| HAK, JOHN P.  
Lonamont

(Home)

(Work)

Assigned To: TSC

O,U

\* NOTE: Calls to PSC phones from outside of the PSC telephone system may require use of a different telephone exchange. For those cases, the exchange for direct dial from any outside line is given in parentheses to the left of the PSC system exchange. Telephone calls to FSV personnel from other PSC telephones is by dialing xxx, where xxx is the three digit work extension, or by dialing and using the switchboard operator.



OPERATIONSPhone  
Lists Affected

HANLON, JOSEPH E.

Windsor

(Home)

(Work)

Assigned To: NONE

HANSEN, ERIC

Greeley

(Home)

(Work)

Assigned To: NONE

HAWKINS, RUSSELL

(Home)

(Work)

Assigned To: NONE

HOCKENSMITH, DAN

(Home)

(Work)

Assigned To: NONE

HOLMES, DAVID B.

(Home)

(Work)

Assigned To: NONE

HOOD, DONALD P.

Longmont

(Home)

(Work)

Assigned To: TSC

O,U

\* NOTE: Calls to PSC phones from outside of the PSC telephone system may require use of a different telephone exchange. For those cases, the exchange for direct dial from any outside line is given in parentheses to the left of the PSC system exchange. Telephone calls to FSV personnel from other PSC telephones is by dialing xx, where xxx is the three digit work extension, or by dialing - and using the switchboard operator.

OPERATIONSPhone  
Lists Affected

HOOVER, JAMES A.  
Loveland

(Home)

(Work)

Assigned To: NONE

HUNTER, JOE J.  
Greeley

(Home)

(Work)

Assigned To: NONE

JOHNSON, DARRELL E.  
Platteville

(Home)

(Work)

Assigned To: NONE

KASTEN, MICHAEL D.  
Platteville

(Home)

(Work)

Assigned To: NONE

KEVAN, ROBERT L.  
Longmont

(Home)

(Work)

Assigned To: NONE

KOLESKI, STANLEY V.  
Northglenn

(Home)

(Work)

Assigned To: NONE

\* NOTE: Calls to PSC phones from outside of the PSC telephone system may require use of a different telephone exchange. For those cases, the exchange for direct dial from any outside line is given in parentheses to the left of the PSC system exchange. Telephone calls to FSV personnel from other PSC telephones is by dialing xxx, where xxx is the three digit work extension, or by dialing and using the switchboard operator.

OPERATIONSPhone  
Lists AffectedLAWLOR, BRUCE  
Greeley(Home)  
(Work)

Assigned To: NONE

LOPKOFF, WILLIAM W.  
Greeley(Home)  
(Work)

Assigned To: NONE

MAGNINIE, WAYNE H.  
Frederick(Home)  
(Work)

Assigned To: NONE

MAYNARD, JOHN H.  
Longmont(Home)  
(Work)

Assigned To: NONE

MOLER, BOB  
Longmont(Home)  
(Work)

Assigned To: NONE

MOORE, GAROLD E.  
Greeley(Home)  
(Work)

Assigned To: NONE

\* NOTE: Calls to PSC phones from outside of the PSC telephone system may require use of a different telephone exchange. For those cases, the exchange for direct dial from any outside line is given in parentheses to the left of the PSC system exchange. Telephone calls to FSV personnel from other PSC telephones is by dialing xxx, where xxx is the three digit work extension, or by dialing - and using the switchboard operator.

OPERATIONSPhone  
Lists AffectedMORGAN, PHILIP C.  
Platteville

(Home)

(Work)

Assigned To: NONE

| MURPHY, SHAWN  
| Northglenn

(Home)

(Work)

Assigned To: NONE

NETZEL, KEN  
Longmont

(Home)

(Work)

Assigned To: NONE

| O'HAGAN, HUGH J.  
| Longmont

(Home)

(Work)

Assigned To: TSC

O,U

| REIGEL, GLEN V.  
| Greeley

(Home)

(Work)

Assigned To: TSC

O,U

SHAHER, STEVEN  
Platteville

(Home)

(Work)

Assigned To: NONE

\* NOTE: Calls to PSC phones from outside of the PSC telephone system may require use of a different telephone exchange. For those cases, the exchange for direct dial from any outside line is given in parentheses to the left of the PSC system exchange. Telephone calls to FSV personnel from other PSC telephones is by dialing xxx, where xxx is the three digit work extension, or by dialing and using the switchboard operator.

OPERATIONSPhone  
Lists AffectedTRUMBLEE, DENNIS  
Platteville

(Home)

(Work)

Assigned To: NONE

VANDENBOOGAARD, W. J.  
Longmont

(Home)

(Work)

Assigned To: NONE

| VAN DYKE, JEROME G.  
Longmont

(Home)

(Work)

Assigned To: TSC or CR

O,U

VIGIL, ANTHONY L.  
Gilcrest

(Home)

(Work)

Assigned To: NONE

WELLER, JACK R.  
Johnstown

(Home)

(Work)

Assigned To: NONE

\* NOTE: Calls to PSC phones from outside of the PSC telephone system may require use of a different telephone exchange. For those cases, the exchange for direct dial from any outside line is given in parentheses to the left of the PSC system exchange. Telephone calls to FSV personnel from other PSC telephones is by dialing xxx, where xxx is the three digit work extension, or by dialing the switchboard operator.

RADIATION PROTECTIONPhone  
Lists Affected

HOOPER, RONALD O.  
Denver

M

(Home)  
(Work)

Assigned To: PCC

LATIMER, KENNETH L.  
LaSalle

M

(Home)  
(Work)

Assigned To: PCC

McGAFFIC, VERNON J.  
Johnstown

M

(Home)  
(Work)

Assigned To: PCC

MILLER, DONALD  
Loveland

M

(Home)  
(Work)

Assigned To: PCC

MORRIS, PAUL A.  
Greeley

M

(Home)  
(Work)

Assigned To: PCC

O'DONOGHUE, E. JOHN  
Northglenn

M

(Home)  
(Work)

Assigned To: PCC

\* NOTE: Calls to PSC phones from outside of the PSC telephone system may require use of a different telephone exchange. For those cases, the exchange for direct dial from any outside line is given in parentheses to the left of the PSC system exchange. Telephone calls to FSV personnel from other PSC telephones is by dialing xxx, where xxx is the three digit work extension, or by dialing and using the switchboard operator.

RADIATION PROTECTIONPhone  
Lists AffectedPOET, STEWART  
Longmont

M

(Home)  
(Work)

Assigned To: PCC

PROCHOWNIK, MICHAEL R.  
Platteville

M

(Home)  
(Work)

Assigned To: PCC

RIMA, STEVEN D.  
Longmont

M

(Home)  
(Work)

Assigned To: PCC

ROZELL, L. DWAYNE  
Platteville

M

(Home)  
(Work)

Assigned To: PCC

SCHLEIGER, TIMOTHY E.  
Amvada

O,S

(Home)  
(Work)

Assigned To: TSC

SCRUGGS, STEPHEN M.  
Longmont

M

(Home)  
(Work)

Assigned To: PCC

\* NOTE: Calls to PSC phones from outside of the PSC telephone system may require use of a different telephone exchange. For those cases, the exchange for direct dial from any outside line is given in parentheses to the left of the PSC system exchange. Telephone calls to FSV personnel from other PSC telephones is by dialing .x, where xxx is the three digit work extension, or by dialing - , and using the switchboard operator.

RADIATION PROTECTIONPhone  
Lists Affected

SHERROW, STEVEN S.  
Greeley

M

(Home)

(Work)

Assigned To: PCC

WOODARD, WILLIAM E.  
Longmont

O

(Home)

(Work)

Assigned To: TSC

\* NOTE: Calls to PSC phones from outside of the PSC telephone system may require use of a different telephone exchange. For those cases, the exchange for direct dial from any outside line is given in parentheses to the left of the PSC system exchange. Telephone calls to FSV personnel from other PSC telephones is by dialing 785-1xxx, where xxx is the three digit work extension, or by dialing 785-2223, and using the switchboard operator.





# PUBLIC SERVICE COMPANY OF COLORADO

FORT ST. VRAIN NUCLEAR GENERATING STATION

RERP PHONE LISTS

Issue 15

Page 58 of 69

## RESULTS

Phone  
Lists Affected

BALL, JOSEPH W.  
Denver

(Home)  
(Work)

Assigned To: NONE

BROWN, DANIEL J.  
Lyons

(Home)  
(Work)

Assigned To: PCC

M

BURCHFIELD, ROBERT S.  
Greeley

(Home)  
(Work)

Assigned To: TSC

O

BURGESS, CHARLES R.  
Platteville

(Home)  
(Work)

Assigned To: NONE

COLE, JAMES W.  
Johnstown

(Home)  
(Work)

Assigned To: NONE

CROWE, CURTIS W.  
Boulder

(Home)  
(Work)

Assigned To: NONE

\* NOTE: Calls to PSC phones from outside of the PSC telephone system may require use of a different telephone exchange. For those cases, the exchange for direct dial from any outside line is given in parentheses to the left of the PSC system exchange. Telephone calls to FSV personnel from other PSC telephones is by dialing xxx, where xxx is the three digit work extension, or by dialing and using the switchboard operator.

RESULTSPhone  
Lists AffectedDUNHAM, DARYL  
Keensburg

(Home)

(Work)

Assigned To: NONE

GLIDEWELL, TINA

(Home)

(Work)

Assigned To: NONE

GOFF, ALAN

(Home)

(Work)

Assigned To: NONE

JOHNSON, THOMAS

(Home)

(Work)

Assigned To: NONE

KENNEDY, THOMAS

(Home)

(Work)

Assigned To: NONE

LONG, KATHY

(Home)

(Work)

Assigned To: NONE

\* NOTE: Calls to PSC phones from outside of the PSC telephone system may require use of a different telephone exchange. For those cases, the exchange for direct dial from any outside line is given in parentheses to the left of the PSC system exchange. Telephone calls to FSV personnel from other PSC telephones is by dialing xxx, where xxx is the three digit work extension, or by dialing and using the switchboard operator.

RESULTSPhone  
Lists Affected

McCAULEY, JERRY

(Home)

(Work)

Assigned To: NONE

NELSON, DON M.

(Home)

(Work)

Assigned To: PCC

PETTINGER, ALBERT J.

(Home)

(Work)

Assigned To: NONE

PETTINGER, DARYL

(Home)

(Work)

Assigned To: NONE

PINNER, R.S. JOE

(Home)

(Work)

Assigned To: NONE

SCHMIDT, A.C.

(Home)

(Work)

Assigned To: PCC

\* NOTE: Calls to PSC phones from outside of the PSC telephone system may require use of a different telephone exchange. For those cases, the exchange for direct dial from any outside line is given in parentheses to the left of the PSC system exchange. Telephone calls to FSV personnel from other PSC telephones is by dialing xxx, where xxx is the three digit work extension, or by dialing and using the switchboard operator.

RESULTSPhone  
Lists Affected

SHIBATA, BRAD

(Home)

(Work)

Assigned To: NONE

SIMONSON, KIRK E.

(Home)

(Work)

Assigned To: NONE

TELAROLI, JOHN

(Home)

(Work)

Assigned To: NONE

WEBER, DAVID LEE

(Home)

(Work)

Assigned To: NONE

WELLER, JAMES N.

(Home)

(Work)

Assigned To: TSC

0

\* NOTE: Calls to PSC phones from outside of the PSC telephone system may require use of a different telephone exchange. For those cases, the exchange for direct dial from any outside line is given in parentheses to the left of the PSC system exchange. Telephone calls to FSV personnel from other PSC telephones is by dialing xxx, where xxx is the three digit work extension, or by dialing and using the switchboard operator.

SCHEDULING/STORESPhone  
Lists Affected

BENEDICT, MARGIE M.

M

(Home)

(Work)

Assigned To: PCC

BLOSSOM, MIKE

M

(Home)

(Work)

Assigned To: PCC

ERWIN, RICHARD W.

M

(Home)

(Work)

Assigned To: PCC

GLASS, GERALD L.

J,Y

(Home)

(Work)

Assigned To: PCC

HARDING, CLIFF

M

(Home)

(Work)

Assigned To: PCC

HAYS, KAREN

M

(Home)

(Work)

Assigned To: PCC

\* NOTE: Calls to PSC phones from outside of the PSC telephone system may require use of a different telephone exchange. For those cases, the exchange for direct dial from any outside line is given in parentheses to the left of the PSC system exchange. Telephone calls to FSV personnel from other PSC telephones is by dialing xxx, where xxx is the three digit work extension, or by dialing and using the switchboard operator.

SCHEDULING/STORESPhone  
Lists Affected

HOLCOMB, WALTER E.

M

(Home)  
(Work)

Assigned To: PCC

HORIHAN, DARLENE

M

(Home)  
(Work)

Assigned To: PCC

POWERS, G.

M

(Home)  
(Work)

Assigned To: PCC

\* NOTE: Calls to PSC phones from outside of the PSC telephone system may require use of a different telephone exchange. For those cases, the exchange for direct dial from any outside line is given in parentheses to the left of the PSC system exchange. Telephone calls to FSV personnel from other PSC telephones is by dialing .xx, where xxx is the three digit work extension, or by dialing , and using the switchboard operator.

SECURITYPhone  
Lists AffectedALPS, DONALD R.  
Longmont

U

(Home)

(Work)

Assigned To: NONE

AMICK, DAVID B.  
Longmont

(Home)

(Work)

Assigned To: NONE

BATES, WILLIAM S.  
Ft. Collins

(Home)

(Work)

Assigned To: NONE

BENNETT, MICHAEL B.

(Home)

(Work)

Assigned To: NONE

HART, W. DARRIEL

(Home)

(Work)

Assigned To: NONE

HOLLAND, CHARLES C.

(Home)

(Work)

Assigned To: NONE

\* NOTE: Calls to PSC phones from outside of the PSC telephone system may require use of a different telephone exchange. For those cases, the exchange for direct dial from any outside line is given in parentheses to the left of the PSC system exchange. Telephone calls to FSV personnel from other PSC telephones is by dialing , where xxx is the three digit work extension, or by dialing , and using the switchboard operator.



SECURITY

Phone  
Lists Affected

MARCUS, RICHARD L.

(Home)

(Work)

Assigned To: NONE

\* NOTE: Calls to PSC phones from outside of the PSC telephone system may require use of a different telephone exchange. For those cases, the exchange for direct dial from any outside line is given in parentheses to the left of the PSC system exchange. Telephone calls to FSV personnel from other PSC telephones is by dialing , where xxx is the three digit work extension, or by dialing and using the switchboard operator.





TECHNICAL SERVICES

Phone  
Lists Affected

BANAGAS, LAURIE

L

(Home)

(Work)

Assigned To: FCP

CLAYTON, OWEN J.

(Home)

(Work)

Assigned To: NONE

DICKERSON, ROBERT A.

(Home)

(Work)

Assigned To: NONE

| EGGBROTEN, JAMES

D,G,O,U

(Home)

(Work)

(Page Number)

| Assigned To: TSC

FRYE, DUANE L.

(Home)

(Work)

| Assigned To: NONE

\* NOTE: Calls to PSC phones from outside of the PSC telephone system may require use of a different telephone exchange. For those cases, the exchange for direct dial from any outside line is given in parentheses to the left of the PSC system exchange. Telephone calls to FSV personnel from other PSC telephones is by dialing xxx, where xxx is the three digit work extension, or by dialing and using the switchboard operator.

TECHNICAL SERVICESPhone  
Lists Affected

| FULLER, CHARLES H.

0

(Home)

(Work)

(Page Number)

Assigned To: TSC

| HELLER, ROGER A.

0

(Home)

(Work)

Assigned To: TSC

KELLY, M. LEE

(Home)

(Work)

Assigned To: NONE

NOVACHEK, FRANK J.

D,G,O,U

(Home)

(Work)

(Page Number)

Assigned To: TSC

| REED, ASA B.

(Home)

(Work)

Assigned To: NONE

\* NOTE: Calls to PSC phones from outside of the PSC telephone system may require use of a different telephone exchange. For those cases, the exchange for direct dial from any outside line is given in parentheses to the left of the PSC system exchange. Telephone calls to FSV personnel from other PSC telephones is by dialing xx, where xxx is the three digit work extension, or by dialing , and using the switchboard operator.

TECHNICAL SERVICESPhone  
Lists Affected

I SILLS, JUDD M.

D,G,O,U

(Home)  
(Work)  
(Page Number)

Assigned To: TSC

STROH, CHERYL

L

(Home)  
(Work)

Assigned To: FCP

TRAMP, PAUL A.

(Home)  
(Work)

Assigned To: NONE

\* NOTE: Calls to PSC phones from outside of the PSC telephone system may require use of a different telephone exchange. For those cases, the exchange for direct dial from any outside line is given in parentheses to the left of the PSC system exchange. Telephone calls to FSV personnel from other PSC telephones is by dialing xxx, where xxx is the three digit work extension, or by dialing and using the switchboard operator.



# PUBLIC SERVICE COMPANY OF COLORADO

FORT ST. VRAIN NUCLEAR GENERATING STATION

RERP PHONE LISTS

Issue 15

Page 69 of 69

## TRAINING

### Phone Lists Affected

BEARLY, PHILIP B.

M

(Home)

(Work)

Assigned To: PCC

MURPHY, MIKE

M

(Home)

(Work)

Assigned To: PCC

RIVERA, RICHARD

M

(Home)

(Work)

Assigned To: PCC

SWITZER, JOSEPH R.

M

(Home)

(Work)

Assigned To: PCC

WADAS, RAY

J,Y

(Home)

(Work)

Assigned To: PCC

WILLFORD, STEVE R.

M

(Home)

(Work)

Assigned To: PCC

\* NOTE: Calls to PSC phones from outside of the PSC telephone system may require use of a different telephone exchange. For those cases, the exchange for direct dial from any outside line is given in parentheses to the left of the PSC system exchange. Telephone calls to FSV personnel from other PSC telephones is by dialing xxx, where xxx is the three digit work extension, or by dialing and using the switchboard operator.