

INSTRUCTIONS FOR INSPECTING, ADJUSTING AND/OR REPLACEMENT
OF PARTS FOR OBTAINING LIMIT SWITCH ADJUSTMENTS
ON BROWN BOVERI 7.5KV THRU 15KV, 500 THRU 750 MVA;
5HK350, 3000; ALL HKV BREAKERS

IB-8303

8305120437 830429
PDR ADDCK 05000358
S PDR



INSTRUCTIONS FOR INSPECTING, ADJUSTING AND/OR REPLACEMENT
OF PARTS FOR OBTAINING LIMIT SWITCH ADJUSTMENTS
ON BROWN BOVERI 7.5KV THRU 15KV, 500 THRU 750 MVA;
5HK350, 3000; ALL HKV BREAKERS
 (MANUFACTURED BETWEEN MARCH 1974 AND JULY 1978 INCLUSIVE)

1. GENERAL

- 1.1 For general breaker instruction, refer to the appropriate Brown Boveri Instruction Bulletin.
- 1.2 The breaker must be removed from the switchboard.
- 1.3 Unless otherwise stated, the breaker is to remain open with closing springs discharged.
- 1.4 The reason for a gap at Dim. "A" is to insure the "LSa" contact is made. The gap at Dim. "B" is to insure that the "LSb" contacts are made and to limit the overtravel of the lever so that the limit switch plastic carrier inside the control relay is not broken.
- 1.5 This Instruction Bulletin supersedes IB-7803.

2. INSPECTION AND ADJUSTMENT FOR DIM. "A" (See Fig. 1)

- 2.1 Charge the closing springs electrically or manually.
- 2.2 Check Dim. "A" with feeler or pin gages.
- 2.3 If required, readjust the screw (4) to Dim. "A" after first loosening the jam nut (5) and then retightening the jam nut after the adjustment.
- 2.4 Close and open the breaker to discharge the closing springs.

3. INSPECTION AND ADJUSTMENT FOR DIM. "B" (See Fig's 1 and 2)

- 3.1 For this procedure, the breaker is to be open and the closing springs discharged.
- 3.2 Check Dim. "B" with feeler or pin gages. (See Fig. 2)
- 3.3 If Dim. "B" is not within dimensions, it is necessary to shim the lever stop(7) up or down as required. This is done by adding or removing shims(2) at the lever stop. (See Fig. 1) Note that if all shims are removed and the Dim."B" still exceeds the max. allowed, the length of the lever stop should be checked. The lever stops made after July 1978 are $2 \frac{17}{32}$ long. Previous to this, the length was $2 \frac{25}{32}$. If required, install the shorter lever stop (7).

4. NEW PART NUMBERS

	<u>Qty. Per Breaker</u>	<u>Notes</u>
2. Shim 650451-A27	As req'd (3 est.)	
7. Lever stop 193392-A	1	2 17/32 overall length. Used in breakers built after July 1978.

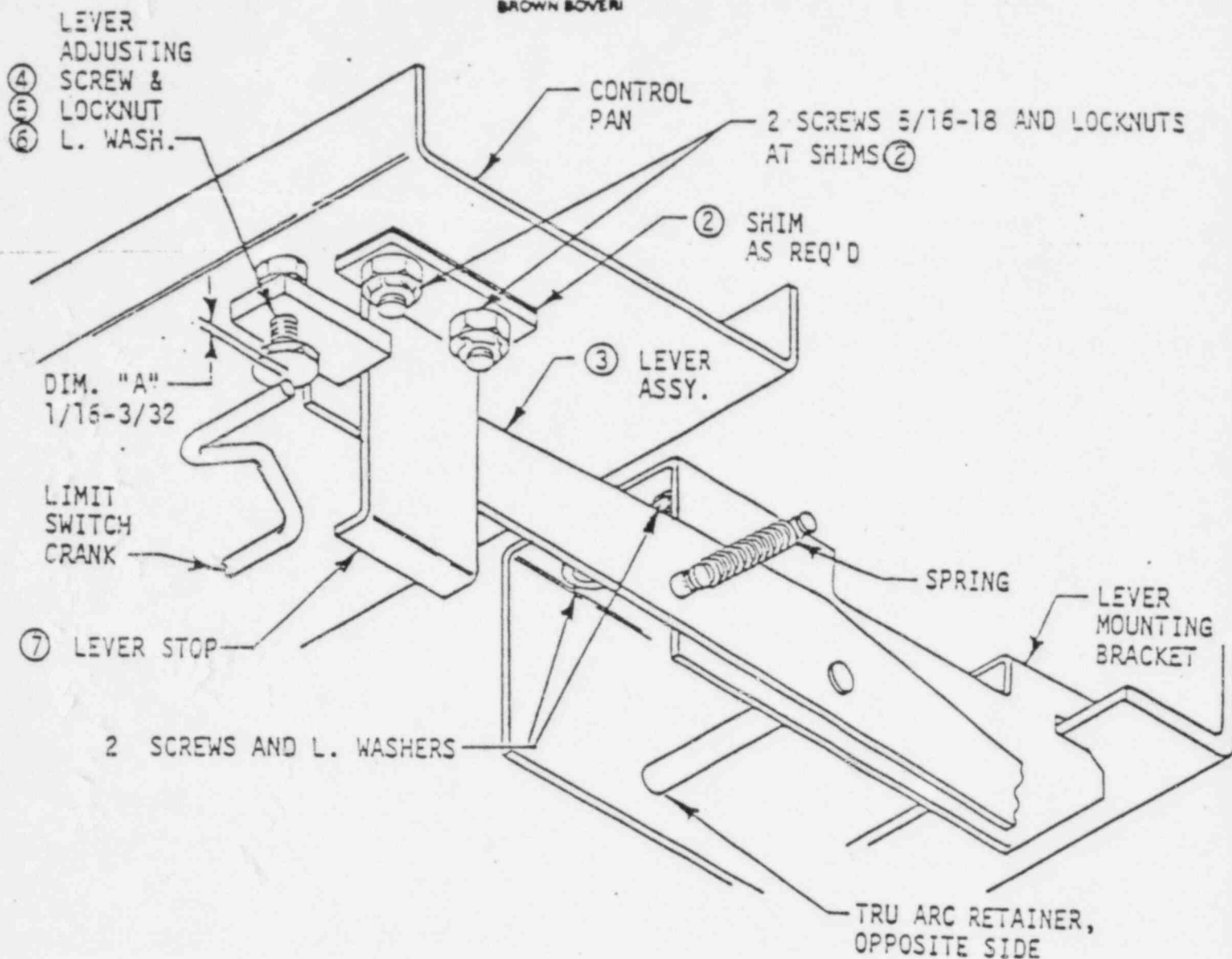
BBC
 BROWN BOVERI


Fig. 1

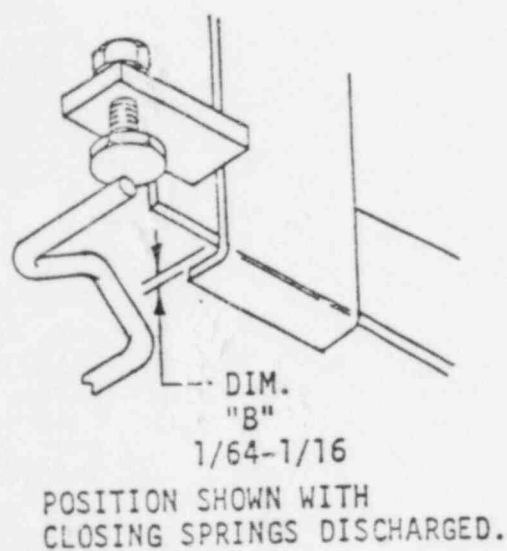


Fig. 2