

ATTACHMENT 1

REACTOR COOLANT SYSTEM

3/4.4.5 STEAM GENERATORS

LIMITING CONDITION FOR OPERATION

3.4.5 Each steam generator shall be OPERABLE.

APPLICABILITY: MODES 1, 2, 3 and 4

ACTION:

With one or more steam generators inoperable, restore the inoperable generator(s) to OPERABLE status prior to increasing T_{avg} above 200°F.

SURVEILLANCE REQUIREMENTS

4.4.5.0 Each steam generator shall be demonstrated OPERABLE by performance of the following augmented inservice inspection program and the requirements of Specification 4.0.5.

4.4.5.1 Steam Generator Sample Selection and Inspection - Each steam generator shall be determined OPERABLE during shutdown by selecting and inspecting at least the minimum number of steam generators specified in Table 4.4-1.

4.4.5.2 Steam Generator Tube Sample Selection and Inspection
For purposes of tube sample selection and inspection, the Steam Generator is divided into two regions. Region A includes the cold leg of all non-plugged tubes in the five rows adjacent to the feedwater inlet nozzle. Region B includes the hot leg and U-bend of all non-plugged tubes in the steam generator. The steam generator tube minimum sample size, inspection result classification, and the corresponding action required shall be as specified in Table 4.4-2. The first inservice inspection of Region A tubes must be performed prior to six (6) effective full power months of operation after the Steam Generator Pre-Heater Modification installation. The second and subsequent sample inspections of tubes in Region A and all sample inspections of tubes in Region B are to be performed in accordance with the inspection frequencies required in Specification 4.4.5.3. All inspected tubes shall be verified acceptable per the acceptance criteria of Specification 4.4.5.4.

REACTOR COOLANT SYSTEM

Tubes in a particular region, which require plugging or indicate continued degradation, shall be considered as part of that particular region sample only for the purpose of determining inspection frequency per Specification 4.4.5.3. The tubes selected for each inservice inspection shall include at least 3% of the total number of tubes in each region of all steam generators; the tubes selected for these inspections shall be selected on a random basis except:

- a. Where experience in similar plants with water chemistry indicates critical areas to be inspected, then at least 50% of the tubes inspected shall be from these critical areas.
- b. The first sample of tubes selected for each inservice inspection (subsequent to the preservice inspection) of each steam generator shall include:

REACTOR COOLANT SYSTEM

SURVEILLANCE REQUIREMENTS (Continued)

1. All nonplugged tubes that previously had detectable wall penetrations greater than 20%.
 2. Tubes in those areas where experience has indicated potential problems.
 3. A tube inspection (pursuant to Specification 4.4.5.4.a.8) shall be performed on each selected tube. If any selected tube does not permit the passage of the eddy current probe for a tube inspection, this shall be recorded and an adjacent tube shall be selected and subjected to a tube inspection.
- c. The tubes selected as the second and third samples (if required by Table 4.4-2) during each inservice inspection may be subjected to a partial tube inspection provided:
1. The tubes selected for these samples include the tubes from those areas of the tube sheet array where tubes with imperfections were previously found.
 2. The inspections include those portions of the tubes where imperfections were previously found.

The results of each sample inspection shall be classified into one of the following three categories:

<u>Category</u>	<u>Inspection Results</u>
C-1	Less than 5% of the total tubes inspected are degraded tubes and none of the inspected tubes are defective.
C-2	One or more tubes, but not more than 1% of the total tubes inspected are defective, or between 5% and 10% of the total tubes inspected are degraded tubes.
C-3	More than 10% of the total tubes inspected are degraded tubes or more than 1% of the inspected tubes are defective.

Note: In all inspections, previously degraded tubes must exhibit significant (greater than 10%) further wall penetrations to be included in the above percentage calculations.

SURVEILLANCE REQUIREMENTS (Continued)

4.4.5.3 Inspection Frequencies - The above required inservice inspections of steam generator tubes shall be performed at the following frequencies:

- a. The first inservice inspection shall be performed after 6 Effective Full Power Months but within 24 calendar months of initial criticality. Subsequent inservice inspections shall be performed at intervals of not less than 12 nor more than 24 calendar months after the previous inspection. If two consecutive inspections following service under AVT conditions, not including the preservice inspection, result in all inspection results falling into the C-1 category or if two consecutive inspections demonstrate that previously observed degradation has not continued and no additional degradation has occurred, the inspection interval may be extended to a maximum of once per 40 months.
- b. If the results of the inservice inspection of a steam generator conducted in accordance with Table 4.4-2 at 40 month intervals fall in Category C-3, the inspection frequency shall be increased to at least once per 20 months. The increase in inspection frequency shall apply until the subsequent inspections satisfy the criteria of Specification 4.4.5.3.a; the interval may then be extended to a maximum of once per 40 months.
- c. Additional, unscheduled inservice inspections shall be performed on each steam generator in accordance with the first sample inspection specified in Table 4.4-2 during the shutdown subsequent to any of the following conditions:
 1. Primary-to-secondary tubes leaks (not including leaks originating from tube-to-tube sheet welds) in excess of the limits of Specification 3.4.6.2.
 2. A seismic occurrence greater than the Operating Basis Earthquake.
 3. A loss-of-coolant accident requiring actuation of the engineered safeguards.
 4. A main steam line or feedwater line break.

REACTOR COOLANT SYSTEM

SURVEILLANCE REQUIREMENTS (Continued)

4.4.5.4 Acceptance Criteria

a. As used in this Specification:

1. Imperfection means an exception to the dimensions, finish or contour of a tube from that required by fabrication drawings or specifications. Eddy-current testing indications below 20% of the nominal tube wall thickness, if detectable, may be considered as imperfections.
2. Degradation means a service-induced cracking, wastage, wear or general corrosion occurring on either inside or outside of a tube.
3. Degraded Tube means a tube containing imperfections greater than or equal to 20% of the nominal wall thickness caused by degradation.
4. % Degradation means the percentage of the tube wall thickness affected or removed by degradation.
5. Defect means an imperfection of such severity that it exceeds the plugging limit. A tube containing a defect is defective.
6. Plugging Limit means the imperfection depth at or beyond which the tube shall be removed from service and is equal to 40% of the nominal tube wall thickness.
7. Unserviceable describes the condition of a tube if it leaks or contains a defect large enough to affect its structural integrity in the event of an Operating Basis Earthquake, a loss-of-coolant accident, or a steam line or feedwater line break as specified in 4.4.5.3.c, above.
8. Tube Inspection for Region B means an inspection of the steam generator tube from the point of entry (hot leg side) completely around the U-bend to the top support of the cold leg. Tube inspection for Region A means a cold leg inspection of the steam generator tube from the tubesheet to the tenth tube-support plate.

REACTOR COOLANT SYSTEM

SURVEILLANCE REQUIREMENTS (Continued)

9. Preservice Inspection means an inspection of the full length of each tube in each steam generator performed by eddy current techniques prior to service to establish a baseline condition of the tubing. This inspection shall be performed after the field hydrostatic test and prior to initial POWER OPERATION using the equipment and techniques expected to be used during subsequent inservice inspections.
- b. The steam generator shall be determined OPERABLE after completing the corresponding actions (plug all tubes exceeding the plugging limit and all tubes containing through-wall cracks) required by Table 4.4-2.

4.4.5.5 Reports

- a. Within 15 days following the completion of each inservice inspection of steam generator tubes, the number of tubes plugged in each steam generator shall be reported to the Commission in a Special Report pursuant to Specification 6.9.2.
- b. The complete results of the steam generator tube inservice inspection shall be submitted to the Commission in a Special Report pursuant to Specification 6.9.2 within 12 months following the completion of the inspection. This Special Report shall include:
 1. Number and extent of tubes inspected.
 2. Location and percent of wall-thickness penetration for each indication of an imperfection.
 3. Identification of tubes plugged.
- c. Results of steam generator tube inspections which fall into Category C-3 and require prompt notification of the Commission shall be reported pursuant to Specification 6.9.1 prior to resumption of plant operation. The written followup of this report shall provide a description of investigations conducted to determine cause of the tube degradation and corrective measures taken to prevent recurrence.

TABLE 4.4-1MINIMUM NUMBER OF STEAM GENERATORS TO BE INSPECTED
DURING INSERVICE INSPECTION

Number of Steam Generators per Unit	Three	
First Inservice Inspection	Three (Region A) Two (Region B)	
Second Inservice Inspection	Three (Region A) One* (Region B)	
Subsequent Inservice Inspections	One* (Regions A and B)	

*The other steam generator not inspected during the first inservice inspection in Region B shall be inspected. The third and subsequent inspections may be limited to one steam generator on a rotating schedule encompassing 9% of the tubes if the results of the previous inspections indicate that all steam generators are performing in a like manner. Note that under some circumstances, the operating conditions in one or more steam generators may be found to be more severe than those in other steam generators. Under such circumstances the sample sequence shall be modified to inspect the most severe conditions.

TABLE 4.4-2

STEAM GENERATOR TUBE INSPECTION

1ST SAMPLE INSPECTION			2ND SAMPLE INSPECTION		3RD SAMPLE INSPECTION	
Sample Size	Result	Action Required	Result	Action Required	Result	Action Required
A minimum of S Tubes per S.G. Region *Note 1	C-1	None	N/A	N/A	N/A	N/A
	C-2	Plug defective tubes and inspect additional 2S tubes in this Region of this S.G.	C-1	None	N/A	N/A
			C-2	Plug defective tubes and inspect additional 4S tubes in this Region of this S.G.	C-1	None
					C-2	Plug defective tubes
			C-3	Perform action for C-3 result of first sample	C-3	Perform action for C-3 result of first sample
					N/A	N/A
	C-3	Inspect all tubes in this Region of this S.G., plug defective tubes and inspect 2S tubes in this Region in each other S.G. Prompt notification to NRC pursuant to specification 6.9.1	All other S.G.s are C-1	None	N/A	N/A
			Some S.G.s C-2 but no additional S.G.s are C-3	Perform action for C-2 result of second sample	N/A	N/A
			Additional S.G. is C-3	Inspect all tubes in this region of each S.G. and plug defective tubes. Prompt notification to NRC pursuant to specifica- tion 6.9.1	N/A	N/A

$S = \frac{N}{n} \%$ Where N is the number of steam generators in the unit, and n is the number of steam generators inspected during an inspection

*NOTE 1 = The first and second sample inspection of Region A tubes must include a minimum of 240 tubes total, randomly selected, among all steam generators.

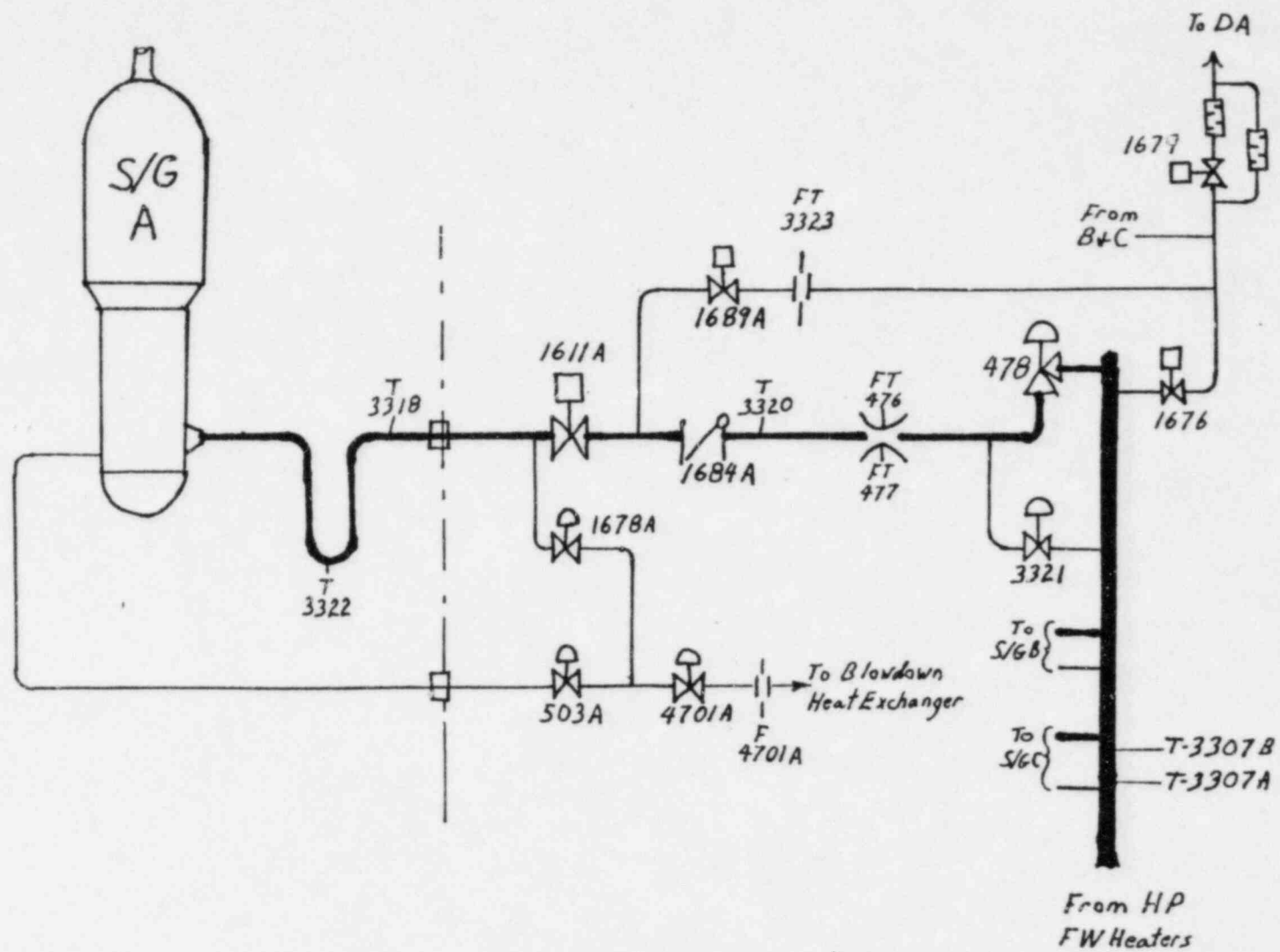


FIGURE 1