

VOL. 14

FNP-0-EIP-11
October 20, 1982
Revision 7

FARLEY NUCLEAR PLANT
EMERGENCY PLAN IMPLEMENTING PROCEDURE

FNP-0-EIP-11

HANDLING OF INJURED PERSONNEL

S
A
F
E
T
Y

R
E
L
A
T
E
D

Approved:

W. J. Hill
Plant Manager

Date Issued: 2-21-83

List of Effective Pages

Page	Rev.
1	6
2	5
3,4,6-8,9	4
5	7
Checklist pg. 1	5
Fig. 2	7
Fig. 1A	4
Fig. 1	6

EIP-4

DOCUMENT CONTROL
CONTROLLED COPY
DO NOT REPRODUCE
COPY NO. 042

HANDLING OF INJURED PERSONNEL

1.0 Purpose

This procedure provides guidelines for actions to be taken in the event of serious injury or in the event of any injury where radioactive contamination may exist.

2.0 References

- 2.1 Joseph M. Farley Nuclear Plant Emergency Plan
- 2.2 FNP-0-EIP-8, Notification Roster
- 2.3 Title 10, Code of Federal Regulations, Part 20
- 2.4 FNP-0-EIP-17, Notification of Unusual Event
- 2.5 FNP-0-EIP-19, Offsite Notification

3.0 General

- 3.1 Plant medical treatment of injured personnel shall consist of simple first aid rendered by qualified individuals.
- 3.2 At least one person on each operating crew of each unit shall be qualified to perform first aid.
- 3.3 Casualty decontamination should not take precedence over first aid in those cases requiring urgent medical treatment.
- 3.4 Decontamination will normally consist of removing contaminated clothing, washing of superficial abrasions, flushing of the eyes, etc.
- 3.5 Casualties with serious injuries such as concussions, fractures, lacerations, stretcher cases, etc., should be transferred to the hospital immediately.
- 3.6 Chemistry & Health Physics shall provide supervision as soon as possible after casualties have been sent to Southeast Alabama Medical Center, to provide assistance in the coordination of the receipt of casualties.
- 3.7 Any individual who administers first aid shall subsequently complete applicable sections of APCo Form Number 5-41273, Employee Injury Report, (Figure 1) and forward the completed form to the Chemistry and Health Physics Supervisor.

- 3.8 Notifications which could be required are shown in Figure 1A and are listed in EIP-26. Telephone numbers are listed in FNP-0-EIP-8.
- 3.9 Personnel contamination associated with medical care is considered a personnel emergency. On each occurrence individuals performing personnel decontamination shall complete CHP Form 202, Personnel Decontamination Record (Figure 2), and forward to the Chemistry and Health Physics Supervisor.
- 3.10 Actual or suspected radiation exposure casualties shall be grouped into the following classifications according to the listed criteria. For the purpose of these classifications trauma is defined as an injury or wound violently produced or the abnormal emotional condition resulting from the injury or wound. Action guidelines are listed for the disposition of such casualties:

3.10.1 Class 1 Radiation Exposure Casualty

3.10.1.1 Exposure criteria:

- a. Estimated radiation dose greater than applicable 10CFR20 limits but less than 5 rem to whole body (including eyes, gonads, and bloodforming organs); or
- b. Estimated radiation dose to the skin of the whole body greater than the 10CFR20 limit but less than 30 rem; or
- c. Estimated radiation dose to the feet, ankles, hands, or forearms greater than the 10CFR20 limit but less than 75 rem.

3.10.1.2 Action guidelines:

- a. Without trauma-send to Southeast Alabama Medical Center (SAMC) for evaluation after clearance by Health Physics for contamination.

- b. With trauma-appropriate first aid then send to SAMC for evaluation.

3.10.2 Class 2 Radiation Exposure Casualty

3.10.2.1 Exposure criteria:

- a. Estimated radiation dose to the whole body (including eyes, gonads, and blood-forming organs) greater than 5 rem but less than 25 rem; or
- b. Estimated radiation dose to the skin of the whole body greater than 30 rem but less than 150 rem; or
- c. Estimated radiation dose to the feet, ankles, hands, or forearms greater than 75 rem but less than 375 rem.

3.10.2.2 Action guidelines:

- a. Without trauma - sent to SAMC for evaluation after clearance by Health Physics for contamination.
- b. With trauma - appropriate first aid, then send to SAMC for evaluation.

3.10.3 Class 3 Radiation Exposure Casualty

3.10.3.1 Exposure criteria:

- a. Estimated radiation dose to the whole body (including eyes, gonads, and blood-forming organs) of 25 rem or more; or
- b. Estimated radiation dose to the skin of the whole body of 150 rem or more; or

- c. Estimated radiation dose to the feet, ankles, hands, or forearms of 375 rem or more.
- d. Internal radiation exposure estimated to be significant.

3.10.3.2 Action guidelines:

- a. Without trauma - after proper decontamination by Health Physics, send directly to the Radiation Casualty Treatment Facility (RCTF) in Birmingham.
- b. With trauma - appropriate first aid, decontamination, and if necessary for life-saving surgical problems, local hospital treatment, then transfer to RCTF.

3.10.4 Monitoring and decontamination is desirable prior to sending a casualty to a hospital.

3.11 The following modes of transportation are available for transporting casualties to medical treatment facilities:

3.11.1 Plant to SAMC, RCTF, Oak Ridge Associated Universities (ORAU):

3.11.1.1 Plant Emergency Vehicle (PEV).

3.11.1.2 Any other Alabama Power Company (APCo) vehicle.

3.11.1.3 Ambulance Service Company, Dothan, Alabama.

3.11.2 SAMC to RCTF or Birmingham Municipal Airport:

3.11.2.1 Ambulance Service Company, Dothan, Alabama.

3.11.2.2 U. S. Army Aviation Center, Fort Rucker, Alabama.

3.11.3 Birmingham Municipal Airport to RCTF:

3.11.3.1 A & A Ambulance Service,
Birmingham, Alabama.

3.11.4 SAMC to ORAU:

3.11.4.1 Ambulance Service Company,
Dothan, Alabama.3.11.4.2 U. S. Army Aviation Center,
Fort Rucker, Alabama (Fixed
wing transportation from
Dothan Airport).

3.11.5 RCTF to ORAU:

3.11.5.1 A & A Ambulance Service,
Birmingham, Alabama.

3.12 Exposure limits for ambulance personnel are as follows:

3.12.1 3 rem if there is an adequate number of
attendants such that rotation may be
accomplished without further endangering
the patient(s).3.12.2 5 rem if the number of attendants is
limited such that personnel cannot be
rotated.

3.12.3 25 rem if necessary to save a life.

4.0 Procedure4.1 The individual who discovers an injured person
or witnesses an injury shall:4.1.1 Render any assistance and first aid
which you are qualified to perform.4.1.2 Notify the Control Room giving your
name, the location and number of injured
personnel, extent of injuries if known
and any other pertinent information
which could affect plant operations.
Notification of the Control Room may
occur before 4.1.1 above based on the
judgement of the individual.4.2 The Shift Supervisor shall consider the following
actions in conjunction with initiating the
Personnel Emergency Checklist (FNP-0-EIP-11A):

- 4.2.1 Announce the emergency on the PA system and dispatch a qualified individual(s) to perform first aid.
- 4.2.2 Implement EIP-17, Notification of Unusual Event if a contaminated, injured individual is transported to an offsite facility.
- 4.2.3 Dispatch a Radiation Monitoring Team to survey if radiation exposure or contamination is possibly involved.
- 4.2.4 Summon a local ambulance if the Plant Emergency Vehicle is not available giving the number of injured personnel and whether or not radioactive materials are involved.
- 4.2.5 Inform Central Security Control (CSC) to escort the ambulance when it arrives at the plant site to the location of the injured personnel.
- 4.2.6 If contamination is involved, direct a Chemistry and Health Physics technician or another individual deemed competent in radiological monitoring to accompany the injured person(s) to SAMC.

NOTE: It may be desirable to notify a C & HP technician at home to meet the emergency vehicle at SAMC.

- 4.2.7 Notify SAMC and the company doctor on call giving the following information:
 - 4.2.7.1 Number of casualties.
 - 4.2.7.2 Whether or not radioactive material is involved.
 - 4.2.7.3 Level of contamination, if known.
 - 4.2.7.4 Nature of injury.
 - 4.2.7.5 Estimated time of arrival.
 - 4.2.7.6 Any other pertinent information.
 - 4.2.7.7 After information is given, the hospital will call back to FNP to verify an actual emergency exists.

- 4.2.8 Ensure that the Emergency Director is notified.
- 4.3 The Emergency Director shall, if not previously performed, provide for the following in conjunction with, completing the Personnel Emergency Checklist (FNP-0-EIP-11A):
 - 4.3.1 Removal of personnel from a hazardous area (high radiation or contamination).
 - 4.3.2 Administration of first aid for severe physical injuries.
 - 4.3.3 Personnel decontamination.
 - 4.3.4 Evaluation of radiation exposures.
 - 4.3.5 In the event of mass casualties, determine which casualties will be sent to SAMC, RCTF, or directly to REACTS.
 - 4.3.6 Notification per EIP-26 in the event of personnel contamination or overexposure.
- 4.4 Person(s) assigned to administer first aid to a casualty shall:
 - 4.4.1 Report to the accident with the first aid kit which is available in both First Aid Rooms and Emergency Cabinets.
 - 4.4.2 Render first aid to the casualty.
 - 4.4.3 If the casualty is to be sent to the hospital, attach a hospital wrist band with casualty's name and I.D. badge number and if radioactive contamination is NOT involved, remove the casualty's I.D. badge and personnel dosimetry devices.
 - 4.4.4 Subsequently, complete applicable sections of APCo Form Number 5-41273, Employee Injury Report, and forward the completed form to the Chemistry and Health Physics Supervisor.
- 4.5 If Health Physics support is required, the Radiation Monitoring Team shall:
 - 4.5.1 Establish the degree of contamination and exposure of the patient.

- 4.5.2 Establish protective clothing requirements for first aid personnel, and/or ambulance personnel.
 - 4.5.3 Decontaminate casualty if appropriate and/or minimize the spread of contamination.
 - 4.5.4 Read the casualty's personnel dosimetry devices as soon as possible to determine the radiation casualty classification, if a radiation injury is involved. If the casualty is highly contaminated and injuries require immediate transfer to the hospital, place an unexposed TLD in a plastic packet on the contaminated area.
 - 4.5.5 Prepare the casualty for transportation to a medical treatment facility if necessary.
 - 4.5.6 Assist the hospital staff as required.
 - 4.5.7 Periodically inform the Emergency Director as to the casualty's disposition.
 - 4.5.8 Detain ambulance and its attendants at hospital until properly monitored and decontaminated.
 - 4.5.9 Obtain personnel dosimetry devices and other APCo property from ambulance personnel when they are released.
 - 4.5.10 If a vehicular accident should occur enroute to SAMC and the Plant Emergency Vehicle or ambulance were to remain unattended, lock the vehicle and if radioactive materials are involved, placard all four sides with the sign "RADIOACTIVE".
- 4.6 Off-site ambulance personnel shall:
- 4.6.1 Meet guard at the APCo gate and follow to the CSC Building.
 - 4.6.2 Obtain ambulance kit and appropriate personnel dosimetry devices at the CSC Building.
 - 4.6.3 Proceed with guard to the location of the casualty.

- 4.6.4 Transport casualty to the medical treatment facility indicated by APCo personnel who are with the casualty.
- 4.6.5 Remain at the medical facility with the ambulance until monitored and released by APCo Health Physics personnel.

PERSONNEL EMERGENCY CHECKLIST

Handling of Injured Personnel

<u>Action</u>	<u>Initials</u>
1. Announce emergency and dispatch individual(s) to render first aid.	_____
2. Investigate situation for possible higher level emergency.	_____
3. Dispatch Radiation Monitoring Team if radiation exposure or contamination is possible involved.	_____
4. Summon Plant Emergency Vehicle or local ambulance service giving the number of injured personnel and whether or not radioactive materials are involved.	_____
5. Inform Central Security Control to escort the ambulance.	_____
6. If contamination is involved, send a C & HP Technician or other individual competent in radiological monitoring to accompany the injured person(s) to Southeast Alabama Medical Center (SAMC). Implement EIP-17	_____
7. Notify SAMC and the company doctor on call giving the following information.	_____
a. Number of casualties.	_____
b. Whether or not radioactive materials are involved.	_____
c. Level of contamination.	_____
d. Nature of injury.	_____
e. Estimated time of arrival.	_____
f. Other pertinent information.	_____
8. In the event of mass casualties decide which casualties will be sent to SAMC, RCTF, or directly to REACTS.	_____
9. Notify agencies per EIP-26	_____

RIR No. _____

Name _____ Date _____

Social Security NO. _____ Time _____

TLD NO. _____ Plant Group _____

Plant Area Where Contamination Occurred: _____

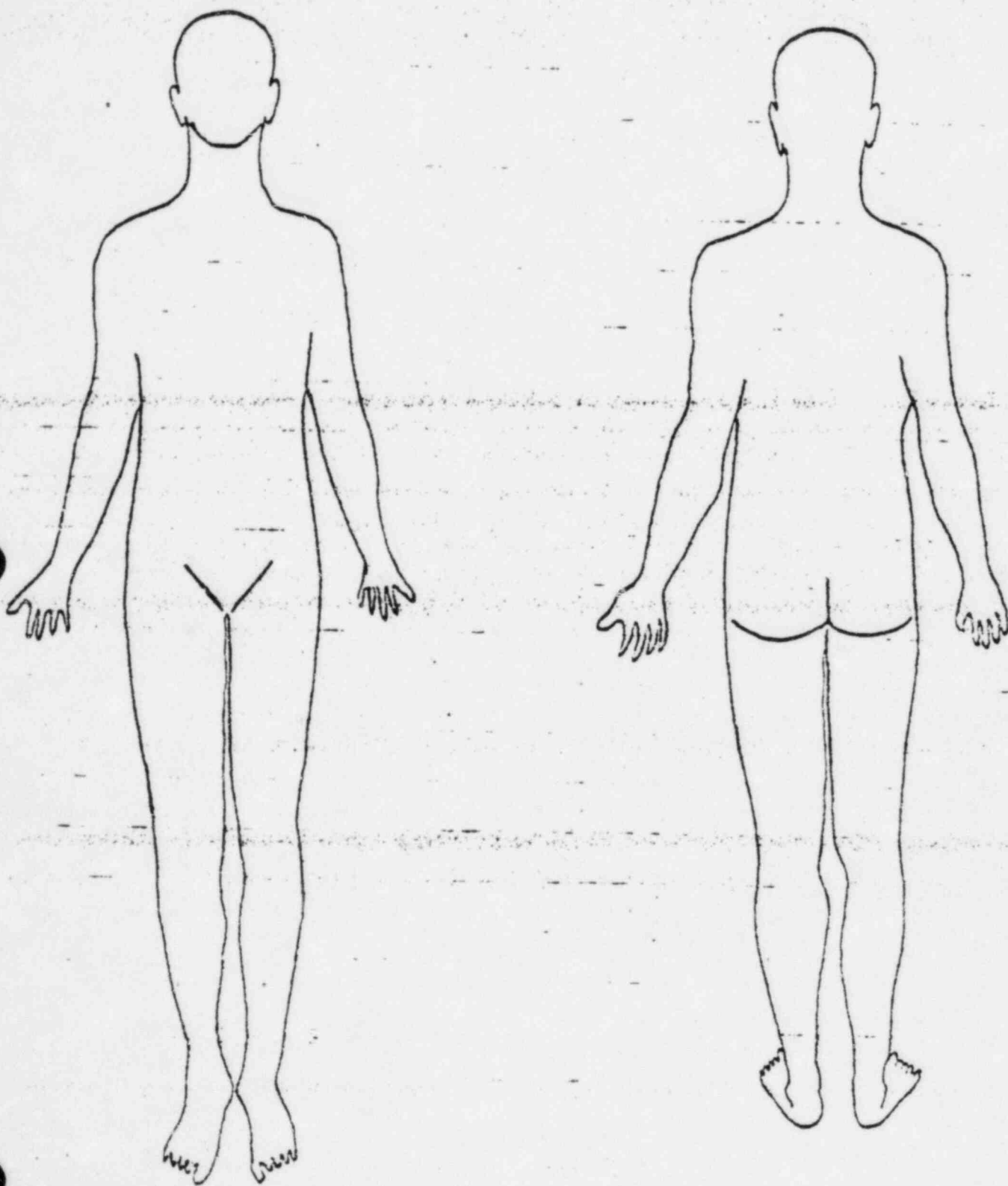
[illegible]

Remarks: _____

Decontamination Performed By: _____

Title: _____

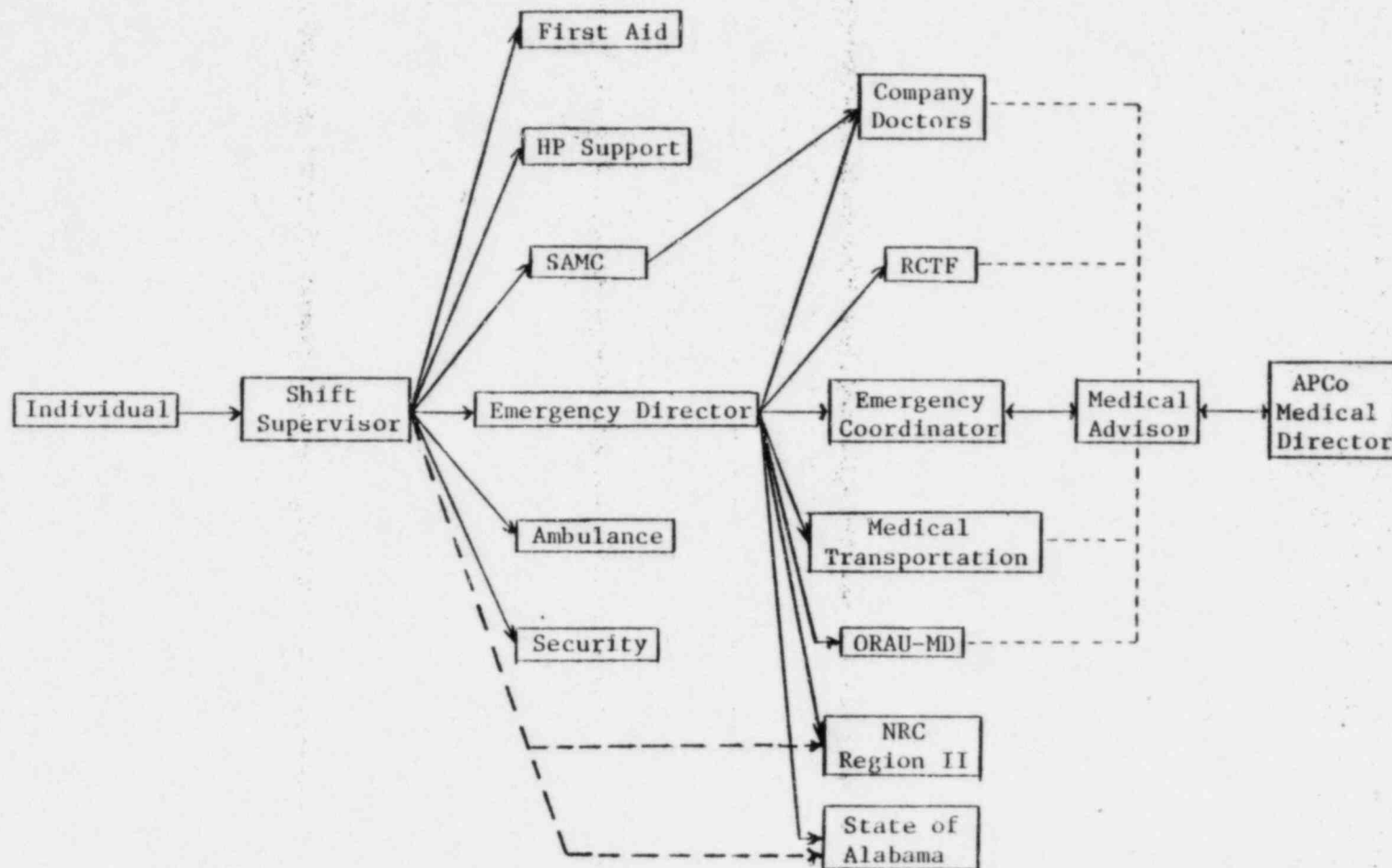
**unbroken, abraded, cut, etc.



Location of Contamination

(Figure 2-back)

(Figure 1A)



ENP-0-EIP-11

EMPLOYEE INJURY REPORT

FNP-0-EIP-11

Alabama Power 

This report is for reporting work related injuries when it is known that an injury did occur. If there is doubt that the injury is a company responsibility, make a report in letter form to the Safety Department. If subsequent facts define it as a company responsibility, the letter will be supplemented by reporting on this form.

OSHA Case or File No. _____

Report No. _____
(SAFETY DEPT. USE ONLY)

IF IT IS BELIEVED INJURY WILL INVOLVE LOST TIME, ADVISE SAFETY DEPARTMENT IMMEDIATELY.

Forward Original To Safety Department

WHO WAS INJURED?	Employee No. _____ Social Security No. _____
	PAYROLL NAME _____ Home Address _____
	Classification _____ Length of Service _____
	Age _____ Sex _____
TIME AND PLACE OF INJURY	This information required only in lost-time injuries. Married? _____ Living with spouse? _____ No. of Children _____ UNDER 18 YRS
	Other Dependents _____ RELATION _____
	Date of Injury _____ Time of Injury _____ A.M. P.M.
	Division, Plant, Organization _____ Department _____
NATURE OF INJURY	Location _____
	Give further detail such as place in plant, substation, or location on line where injury occurred _____
WHAT WAS DONE FOR INJURED?	Nature of Injury _____
	Specific Location of Injury on Body _____
	Was First Aid given? _____ If so what? _____
	Name and location of Doctor _____ Date sent to Doctor _____
THIS SECTION OF REPORT TO BE COMPLETED BY FOREMAN OR SUPERVISOR OF INJURED (Do not delay sending report if injured is not physically able to complete his/her part.)	Name and location of Hospital if applicable _____
	Did Doctor permit injured to return to work? _____ When? _____ Is work slip attached, dated & signed? _____
	Restricted Duty? _____ Unrestricted Duty? _____
	(Send all Return To Work slips to Safety Department after signing and dating.)
	Name the machine, tool, equipment or substance involved _____
	Was above defective in any way? _____ If so, state in what way _____
	Cause(s) of injury _____
	Describe circumstances, including names of witnesses, surrounding injury based on your investigation. Attach additional statement and sketches if necessary _____
INJURED'S DESCRIPTION OF ACCIDENT RESULTING IN INJURY (DO NOT SAY "See above for Description")	Suggested corrective action _____
	Date of Report _____ Signed _____ FOREMAN OR SUPERVISOR TITLE
	Give a clear description of how you received injury, including names of witnesses. Use other side of report if more space is needed. _____

FARLEY NUCLEAR PLANT
EMERGENCY PLAN IMPLEMENTING PROCEDURE
FNP-0-EIP-8S
A
F
E
T
Y

R
E
L
A
T
E
D

NOTIFICATION ROSTER

Approved:

W. S. Hart
Plant ManagerDate Issued: 2-21-83List of Effective Page

Page	Rev. #
1	26
2	25
Tbl 1	19
Tbls 2,4	25
Tbl 3 pg.1,3,4	25
pg. 2,5	26
Tbls 5,	26
Tbl 6 pg.1	25
pg.2	26
Tbl 7	26
Tbl 8 pgs. 1&2	26
Tbl 9	23
Tbl 10	26

Disk EIP-1

App. 1, pg. 1	25
pg. 2,3	18
App. 2	25
App. 3, pg. 1	25
pg. 2,3	18
App. 4, pg. 1	25

DOCUMENT CONTROL
CONTROLLED COPY
DO NOT REPRODUCE
COPY NO. 057

NOTIFICATION ROSTER

1.0 Purpose

This procedure provides a listing of names and telephone numbers of personnel and organizations who may need to be notified in the event of an emergency condition.

2.0 References

Joseph M. Farley Nuclear Plant Emergency Plan

3.0 General

3.1 Copies of this procedure shall be maintained at all times with the Emergency Director on call.

3.2 The Chemistry and Health Physics Supervisor shall be responsible for updating names and telephone numbers for offsite agencies upon notification of changes. Communications checks and verification of phone numbers for offsite agencies will be conducted quarterly by direct contact.

3.3 The Staff Assistant will provide each new employee with a notice explaining that it is the responsibility of each employee to report any address or telephone changes to the Administrative Office.

3.4 A quarterly update of the Plant Call List which contains the names, job classifications, addresses, and phone numbers of all permanent plant personnel will be issued to holders of EIP-8 by the Document Control Supervisor.

3.5 Channel 5 on the public address system is to be used during emergencies.

3.6 Authentication

3.6.1 Authentication of emergency messages shall not be required on dedicated communications systems.

3.6.2 Authentication of notifications over land lines shall be accomplished by the offsite party calling the TSC for the individual who made the notification.

Rev. 26

4.0 Procedure

- 4.1 Refer to Table 1, Emergency Director Call List, for the Emergency Director on call.
- 4.2 Refer to Table 2, Fire, Medical, and Law Enforcement Assistance and Weather Information, for offsite fire department support, medical transportation, hospitals, plant doctors, law enforcement agencies, and weather information.
- 4.3 Refer to Table 3, APCo Management Notification, for the Emergency Coordinator and APCo Safety Department, and the Emergency Operations Facility.
- 4.4 Refer to Table 4, State Notification, for States of Alabama, Georgia and Florida Notifications.
- 4.5 Refer to Table 5, Regulatory Notification or Assistance, for the Nuclear Regulatory Commission and Savannah River Operations' Office.
- 4.6 Refer to Table 6, Support Groups, for other miscellaneous notifications. Information to be requested by Westinghouse is shown in Attachment 1.
- 4.7 Refer to Table 7, Health Physics Support, for qualified health physics personnel.
- 4.8 Refer to Table 8, Technical Support Center (TSC) Call List, for members of the TSC staff.
- 4.9 Refer to Table 9, Oil Spill Notifications, for organizations who are to be notified as required by the FNP "Oil Spill Prevention and Countermeasure Plan".
- 4.10 Refer to Table 10, Technical Support
- 4.11 Refer to Appendix 1 for information regarding the use of the Emergency Notification Network.
- 4.12 Refer to Appendix 2 for Initial Messages to be used in notifying offsite authorities.
- 4.13 Refer to Appendix 3 for Follow-up Messages to be used in providing additional information to offsite authorities.
- 4.14 Refer to Appendix 4 for Westinghouse Event Data Checklist to be used in providing emergency information to Westinghouse.

TABLE 1
EMERGENCY DIRECTOR CALL LIST

The individuals listed below will serve as the "on-call" Emergency Director for a seven day period (Monday through Sunday) on a rotating basis.

"On-call" is defined as:

- a. At Farley Nuclear Plant, or
- b. At the individual's home where he can be reached at his home phone number, or
- c. At a specific location in the Dothan area other than the individual's home AND the control room has the phone number where the individual can be contacted, or
- d. In the Dothan area (not greater than 30 miles from downtown Dothan) AND the individual's pager is ON.
 1. The pager will be activated by dialing
 (pager number) on the Dothan exchange.
 2. On any exchange other than the Dothan exchange the pager will be activated by dialing
 (pager number).
 3. After dialing, two rings will be followed by a high frequency tone; the caller then has 15 seconds to deliver a message. NOTE: The pager is a receiver only. It has no transmitting capability.

EMERGENCY DIRECTORS

<u>Name and Position</u>	<u>Home phone</u>	<u>Pager Number</u>
W.G. Hairston, III Plant Manager		
J. D. Woodard Asst. Plant Manager		
D. N. Morey Operations Superintendent		

TABLE 2
FIRE, MEDICAL, LAW ENFORCEMENT, AND WEATHER INFORMATION

<u>Service</u>	<u>Organization</u>	<u>Phone</u>
Aeromed. Evac.	U. S. Army Aviation Center	
Ambulance	Daniel Construction Co.-First Aid	
Ambulance	Dothan Ambulance, Inc.	
Ambulance	A & A Ambulance Co. - Birmingham	
	Adamsel	
Fire	Dothan Fire Department Ask for fire dept. Business exchange/ Ask for Ext. or Central Dispatch	
Hospital	Southeast Alabama Medical Center Ask for Emergency Room Nurse or Direct line to Emergency Room Nurse or Direct line to Emergency Room Doctor	
Hospital	UAB Medical Center Main Operator Ask for Senior Staff Oncologist on call Radiation Care Treatment Facility-Page Emergency Department Poision Control Center	
Hospital	REACTS Oak Ridge (Normal work hours) Asso. Universities Dr. Robert Ricks Director of REACTS, Dr. Hubner Office Dr. Lushbaugh Oak Ridge Hospital (24 hour) Rad. Accident Personnel(Emergency)	beeper

<u>Service</u>	<u>Organization</u>	<u>Phone</u>
Local Law Enforcement Agencies	Dothan City Police	exchange) Emergency . Ask for police Business Communication Division Ext.
	Houston Co. Sheriff Dept.	Day Ext.
		(Jail)-Week-end/Night Direct Line
	FBI - Dothan Office	
	Ala. Dept. of Public Safety	
Plant Doctors	Dr. B. R. Byrd	
	Dr. D. H. Pope	
	Dr. J. H. Suggs	
	Dr. J. A. Robeson	
	Dr. W. F. Drewry	
Weather	Dr. E. Mazyck	
	Flight Service, U. S. Weather Service, Dothan (AL) Airport	
	Weather Bureau, Montgomery	(24 hr)
	Weather Bureau, Birmingham (Forecasting Station)	(Day Only) (24 hr)
	Great Southern Paper Co.	Lab Guard Personnel (

TABLE 3
APCO MANAGEMENT NOTIFICATION

EMERGENCY COORDINATOR/RECOVERY MANAGER/EXECUTIVE NUCLEAR LIAISON MANAGER

<u>Name</u>	<u>APCO Ext.</u>	<u>Home Phone</u>	<u>Pager Number</u>	<u>Radio Call Unit Number</u>
R. P. McDonald				
H. O. Thrash				
O. D. Kingsley, Jr.	Unlisted.			

EMERGENCY COORDINATOR ROUTINE MESSAGES

Dial the pager number provided. A message will be recorded and the individual's pager will alert him to retrieve it.

EMERGENCY COORDINATOR EMERGENCY MESSAGES

Dial the pager number provided and leave a message. Hang up, wait at least 60 seconds, and then dial. No messages will be recorded but a second tone will be activated on all Emergency Coordinator pagers.

EMERGENCY COORDINATOR CAR RADIO NOTIFICATION

To contact individual via car radio on frequency MHz, call one of the numbers listed for the area in which the individual is located. Give the radio operator the message you wish to be relayed.

<u>Area</u>	<u>APCO Ext.</u>	<u>Bell Number</u>
Birmingham		
Montgomery		
Eufaula (Day Only)		

ADMINISTRATIVE SUPPORT DIRECTOR

<u>Name</u>	<u>APCO Ext.</u>	<u>Home Phone</u>	<u>Pager Number</u>
J. G. Sims			
D. M. Varner			
D. E. Mansfield			

L. L. Bailey

ENGINEERING & LICENSING SUPPORT DIRECTOR

C. L. Buck

R. L. George

B. D. McKinney

R. S. Fucich

DOSE ASSESSMENT DIRECTOR

J. W. McGowan

K. W. McCracken

W. M. Jackson

ACTIVATION & LOGISTICS ASSISTANT

Susan Knight

G. M. Grove

M. L. Stoltz

SUPPORT STAFF ROUTINE MESSAGES

Dial _____ leave a message and hang up. Then dial the pager number for the selected individual to alert him to retrieve the message.

SUPPORT STAFF EMERGENCY MESSAGES

Dial _____, and leave a message. All Support Directors and the Activation and Logistics Assistants (including alternates) will be simultaneously alerted to retrieve the message.

SUPPORT STAFF PAGEBOY MESSAGES

Call the Birmingham Division Control Center (81-81-65 or Bell Numbers _____). Provide the operator with the pageboy code given for the individual and state the message you wish transmitted. All pageboy codes are for frequency _____ MHz.

PUBLIC INFORMATION MANAGER

<u>Name</u>	<u>APCO Ext.</u>	<u>Home Phone</u>	<u>Pager Number</u>
Neal Wade			
Steven E. Bradley			

MEDICAL SUPPORT

<u>Name</u>	<u>APCO Ext.</u>	<u>Home Phone</u>	<u>Ans. Serv.</u>
Dr. C. H. Colvin			
Dr. M. Bradley			
Dr. T. B. Patton			

LEGAL SUPPORT

<u>Name</u>	<u>APCO Ext.</u>	<u>Home Phone</u>
R. A. Buettner		
H. H. Boles		
A. L. Jordan		

INSURANCE SUPPORT

<u>Name</u>	<u>APCO Ext.</u>	<u>Home Phone</u>
Norman Horsley		
H. K. Travis		

OPERATIONS SUPPORT CENTERS

Maintenance Shop	Pax
Auditorium	Pax
CSC	Pax
Control Room	Pax
Switchhouse	Pax

FLINTRIDGE EMERGENCY OPERATIONS CENTER

<u>Location</u>	<u>APCO Ext.</u>	<u>Bell Number</u>	<u>Other</u>
NGS Conference Room			
NGS Conference Room			
NGS Conference Room			

TECHNICAL SUPPORT CENTER

<u>Location</u>	<u>Extension</u>
Communications Cabinet	ENN (State Hotline - White Phone) NRC Ring Down (Red Phone) PAX with speaker B'ham with speaker B'ham
Communications Area	PAX (next to Communications Cabinet) Security radio Plant radio Division radio
Emergency Director	PAX
Operations Manager	PAX
Maintenance Manager	PAX
Technical Manager	PAX
Health Physics Manager	PAX
NRC	PAX PAX
Monitoring Area	PAX

ALTERNATE TECHNICAL SUPPORT CENTER

<u>Location</u>	<u>APCO Ext.</u>	<u>Other</u>
Shift Foremen's Office		(Red Phone)
Shift Aids Office		; NRC H.P. dial up
<u>Control Room Area</u>	<u>APCO Ext.</u>	
Unit 1 Shift Supervisor		
Unit 2 Shift Supervisor		
Unit 1 Operators Desk		
Unit 2 Operators Desk		

EMERGENCY OPERATIONS FACILITY

<u>Location</u>	<u>FNP Ext.</u>	<u>Other</u>
Command Center (Room 106).....		TSC Intercom ENN NRC ENS (Red Phone) NRC HPN
Recovery Manager.....		Security Radio Plant Radio
NRC (Room 106).....		District Radio
APCO Technical Support Area.....		
Architect Engineers/NSS Vendor Area (Room 104).....		

ALTERNATE EMERGENCY OPERATIONS FACILITY (Headland, AL) Bell #

<u>Location</u>	<u>APCO Ext.</u>	<u>Other</u>
NRC Staff Area (Room 105)		
Dose Assessment Area (Room 115)....		Security Radio State RMT Radio (monitor only)
Command Center		ENN Security Radio District Radio Division Radio State RMT Radio (Monitor only)
Engineering & Licensing		

TABLE 4
STATE NOTIFICATION

<u>Organization</u>	<u>Name</u>	<u>Phone</u>
STATE OF ALABAMA	During normal office hours (week days 8:00 AM - 5:00PM)	
Dept. of Public Health		

At all other times notify one of the following:

Aubrey V. Godwin

K. E. Whatley

Archie Patterson

James L. McNees

William T. Willis

If above unavailable, call

Ask operator to page No.

The Local Agencies should be notified in case the Alabama Division of Radiological Health cannot be contacted within 10 minutes and a General Emergency has been declared. Use the Emergency Notification Network if operable, otherwise call the numbers listed below.

<u>County</u>	<u>Director</u>	<u>Phone</u>
Houston County, AL	J. W. Aldridge	
Civil Defense		

State Operations Room

Operations (Local)

(State)

(State)

or Karen Gilley

or Brenda Danning

Blakely-Early County, GA

Civil Defense

Ray Garrett

Hot Line

R. L. Temples

Early Co. Ambulance Service

Early Memorial Hospital

Sheriff's Dispatcher

*Denotes home phone

OrganizationPhone

†STATE OF FLORIDA

West Area Coordinator - Robert R. Smith
Defuniak Springs

State Warning Point Division of Disaster
Tallahassee Preparedness

Alternate Warning Division of Law Enforcement
Point Tallahassee

Tallahassee
DHRS -

Lyle Jarrett

Uray Clark

Orlando Radiological Lab

OrganizationPhone

†STATE OF GEORGIA

ENV. Rad Program On Call Member

(pager)

On Call ENV. Prot. Div. Staff Member

Georgia Emergency Management Agency 24 Hour No.

Emergency Operations Center

ContactOffice PhoneHome Phone

James Hardeman
Clifford Blackman
Susan Adamovitz
Alphonsa Gooden
Clark Reynolds
Jim Setser

†Normal notification is through the State of Alabama, Department of Public Health.

Organization

Phone

†STATE OF FLORIDA

West Area Coordinator - Robert R. Smith
Defuniak Springs

State Warning Point Division of Disaster
Tallahassee Preparedness

Alternate Warning Division of Law Enforcement
Point Tallahassee

Tallahassee
DHRS - Lyle Jarrett

Uray Clark

Orlando Radiological Lab

Organization

Phone

†STATE OF GEORGIA

ENV. Rad Program On Call Member

(pager)

On Call ENV. Prot. Div. Staff Member

Georgia Emergency Management Agency 24 Hour No.

Emergency Operations Center

Contact

Office Phone

Home Phone

James Hardeman

404/636-2515

Clifford Blackman

404/921-3686

Susan Adamovitz

404/973-9678

Alphonsa Gooden

404/284-6252

Clark Reynolds

404/997-0052

Jim Setser

404/427-5479

†Normal notification is through the State of Alabama, Department of Public Health.

TABLE 5
REGULATORY NOTIFICATION OR ASSISTANCE

<u>Organization</u>	<u>Name</u>	<u>Phone</u>
Nuclear Regulatory Commission,	Operations Center, Bethesda	Red Phone (ENS)
	Health Physics Network	22
	Full-time Duty Officer, Bethesda	(202)951-0550
Commercial Telephone System to NRC Operations Center (via Silver Spring Central Office)		(301)427-4056
	Full Time Operator, Bethesda	(301)492-7000 or
	Public Affairs, Bethesda	(301)492-7715
Nuclear Regulatory Commission,	Office of Inspection and Enforcement	(404)221-4503
	101 Marietta St. N.W.	(404)221-4504
	Suite 3100	
	Atlanta, Georgia 30303	
	J. P. O'Reilly	*
	Regional Administrator	
	Paul Kellogg	(404)221-5585
	Chief, Reactor Projects, Section II	*
	R. D. Martin	(404)221-5610
	Deputy Director	*
Confirmation	Western Union Telegraph	1-800-257-2241
Savannah River Operations Office	Duty Officer	(803)725-3333/ 2117 2729
NRC On-Site Inspector	William H. Bradford	899-3386 or 800-3387
		PAX 480
	W. H. Ruland	PAX 480

*Home Phone

TABLE 6
SUPPORT GROUPS

<u>Organization</u>	<u>Name</u>	<u>Phone</u>
Applied Physical Technology	North Office	
	Dr. Dave Walker	*
	Bob Hearn	*
Institute of Nuclear Power Operations (Switchboard)		
Duty Officer (Emergency)		
Oak Ridge Opns Office of DOE		
(Request through State of Alabama)		
University of Georgia		
Center for Applied Isotopes Study		
		(Campus Police)
		Have police contact one
		of the following:
		Dr. John Noakes
		Jim Spaulding

<u>Organization</u>	<u>Name</u>	<u>Phone</u>
Southern Company** Services, Inc.	J. R. Crane (Dept. Mgr)	*
		*
Southern Company ** Services, Inc.	Chris. Byrd (Civil & Arch. P.E.)	
	W. R. Hill (Proj. Support Mgr)	
	D. E. Kendrick (Mech. P.E.)	
	H. H. Stone (Elec. P.E.)	

*Home phone.

**To call on PAX phone dial access codes as appropriate plus 8-6-85 and last four digits of the number.

WESTINGHOUSE

Power Generation Service
Division (Birmingham)

Charlie Reep
Bob Wise
Chuck Patrick

PAX

Water Reactors Division (Pittsburgh)

Inform one Westinghouse contact, using this list in the order shown, to ensure early notification to W of an emergency occurring at FNP. Be prepared to transmit the data requested in Appendix 4, to discuss as many facts as are available at the time of the call and to identify a cognizant individual to provide continuing communications and updates to W.

<u>Title</u>	<u>Name</u>	<u>Office</u>	<u>Home</u>	<u>Hot Line</u>
1. Site Services Manager	Rod Baulig			
2. Operating Plant Regional Manager	John Miller			
1st Alterante	Lonnie Benson			
2nd Alternate	Dallas KoKay			
3. Service Response Manager	Tom Mitlo			
1st Alternate	Bob Stokes			
2nd Alternate	John Miller			
4. Emergency Response Director	Tom Anderson			
5. Emergency Response Deputy Director	Ron Lehr			
6. Emergency News Communications	Mike Mangan			

NUCLEAR MUTUAL LIMITED

Larry Cummings
Al Rand

New York
Office

Quentin Jackson
Adrian Lee-Emery

Hamilton
Bermuda
Office

TABLE 7
HEALTH PHYSICS SUPPORT

<u>Name and Position</u>	<u>Phone</u>
Nesbitt, C. D. Technical Superintendent	
Carr, W. C. C&HP Supervisor	
Mitchell, M. W. C&HP Sector Supervisor	
Farnsworth, P. E. Shift Support Supervisor	
Patton, B. P. Plant Health Physicist	
Walden, J. M. Radwaste Supervisor	
Gripentog, W. G. Environmental & Emergency Planning Supervisor	
Graves, O. M. C&HP Foreman	
Hostetter, D. A. C&HP Foreman	
Maddox, N. M. Plant Instructor	
Bayne, W. R. Plant Chemist	
Gilliam, B. J. C&HP Foreman	
Gray, N. S. C&HP Foreman	
Hall, C. R. C&HP Foreman	

TABLE 8
TECHNICAL SUPPORT CENTER CALL LIST

The individuals listed below will serve as the "on-call" Managers for a seven day period (Monday through Sunday) on a rotating basis.

"On-call" is defined as:

- a. At Farley Nuclear Plant, or
- b. At the individual's home where he can be reached at his home phone number, or
- c. At a specific location in the Dothan area other than the individual's home AND the control room has the phone number where the individual can be contacted, or
- d. In the Dothan area (not greater than 30 miles from downtown Dothan) AND the individual's pager is ON.
 1. The pager will be activated by dialing X (pager number) on the Dothan exchange.
 2. On any exchange other than the Dothan exchange the pager will be activated by dialing X (pager number).
 3. After dialing, two rings will be followed by a high frequency tone; the caller then has 15 seconds to deliver a message. NOTE: The pager is a receiver only. It has no transmitting capability.

Name and Position	Home phone	Pager Number
Operations Manager		
1. R. D. Hill		
2. J. E. Odom		
3. T. H. Esteve		
Maintenance Manager		
1. W. B. Shipman		
2. H. R. Garland		
3. R. M. Coleman		
Technical Manager		
1. C. D. Nesbitt		
2. R. G. Berryhill		
3. R. D. Rogers		
Health Physics Manager		
1. W. C. Carr		
2. M. W. Mitchell		
3. B. P. Patton		
SAER Supervisor		
1. W. G. Ware		
2. J. B. Lowery		
3. D. R. Culver		

Name and PositionHome phonePager Number

Reactor Engineering Manager

1. R. H. Marlow
2. W. S. MacDonald
3. S. G. McDaniel

Chemistry Manager

1. W. R. Bayne
2. R. T. Wood
3. R. A. Livingston

Environmental

1. W. G. G ipentog
2. J. Higginbotham
2. J. M. Walden

TABLE 9

OIL SPILL NOTIFICATIONS

<u>Organization</u>	<u>Name</u>	<u>Phone</u>
U.S. Coast Guard National Response Center		
Alabama Water Improvement Commission	John Williford Charles Horn James Warr	(office)
Environmental & Research Services	Steve Jones Charles Biddinger	
Environmental Protection Agency	A. J. Smith R. D. Stonebraker George Moein Allen Bartlett Ray Wilkerson Jan Rogers Fred Stroud Warren Dixon Charles McPherson Edward Hatcher	(office) (24 hr)
Albany Waste Oil	Thomas Davis	
Great Southern Paper Co.	G. E. Rathel	*
	Jack Anderson	*
Tenneco Oil Co.	Cleo Savelle	(after hours)

*Home Phone

TABLE 10
TECHNICAL SUPPORT

<u>Name and Position</u>	<u>Phone</u>
Nesbitt, C. D. Technical Superintendent	
Rogers, R. D. Technical Supervisor	
Hill, R. D. Operations Supervisor	
Marlow, R. H. GPE Supervising	
Stephenson, E. L. GPE Supervising	
Ward, L. A. Planning Supervisor	
Webb, P. Generating Plant Engineer II	
McDaniel, S. G. Generating Plant Engineer I	
MacDonald, W. S. Generating Plant Engineer I	
Gripentog, W. G. Env. & Emerg. Planning Supervisor	
Bayne, W. R. Plant Chemist	

Each ENN unit shall consist of a telephone and speaker. When all phones are cradled, all speakers are muted. If any one of the phones is lifted off the cradle all speakers are activated except the speaker associated with the phone taken off the hook. The phones do not ring. The person lifting the phone need only speak into the phone to be heard by personnel at all the other ENN units. When any other ENN phone is taken off the hook the associated speaker will be muted and normal two way voice communication is established between the two parties. This communication will be transmitted through those speakers not muted, i.e. those with the associated phone cradled.

CAUTION

Upon completion of any transmission from a given station the phone must be returned to the cradle to activate the associated speaker. Do not leave phone unattended off the cradle.

4.0 Net Control

4.1 Initial Notification

In an emergency situation dictating the activation of the ENN, the Technical Support Center at Farley Nuclear Plant shall make initial notification using the following message:

"This is (Name and Title) at Farley Nuclear Plant. Please initiate your radiological notification procedure".

Dispatchers will acknowledge receipt of the above message and proceed in accordance with their procedures. No technical information will be given until the appropriate state and/or local agency(ies) are on the ENN.

4.2 False Notification

In the event of an attempted false notification or other misuse of the ENN, the speaker in the TSC at Farley Nuclear Plant will be activated and FNP personnel will receive the message transmitted. If the message is an attempt to cause a false notification, FNP supervisory personnel will lift the TSC phone and state "Negative, Negative, Negative" followed by "This is (Name and Title) acknowledge negative".

Dispatcher will acknowledge and proceed in accordance with their procedures.

4.3 Subsequent Communications

The ENN may also be used for the clear transmission of technical, radiological and meteorological data and action statements and recommendations based on evaluation of this data.

The Technical Support Center (TSC) at the Farley Nuclear Plant shall be net control for all ENN communications. The TSC shall have priority in transmitting information and shall govern transmission by other organizations.

5.0 Communications Checks

The ENN will be tested on the first Tuesday of each month between 1:00 p.m. and 1:30 p.m. Dothan, Alabama time. The test will be performed as follows:

The shift supervisor will remove the receiver from his phone and repeat, "This is (Name and Title) at Farley Nuclear Plant, this is a communications check, acknowledge". Acknowledgement should follow the order given in paragraph 3.0. The shift supervisor will verify that all ENN units are responding and notify the appropriate organization by separate means.

6.0 System Security

The possibility for misuse and/or abuse of this type system is obvious. Therefore, each organization that has an ENN unit installed in locations not manned on a 24 hour basis shall provide adequate security measures to minimize the probability of misuse and abuse. Descriptions of the security measures established will be provided to Alabama Power Company.

APPENDIX 1

ALABAMA POWER COMPANYNUCLEAR GENERATION SECTION-DIRECTIVENGS-D1, EMERGENCY NOTIFICATION NETWORK

Effective Date: _____

Approved: _____
Vice President - Nuclear Generation1.0 Purpose

This directive describes the locations and capabilities of the Emergency Notification Network (ENN) and establishes procedures for its use and testing.

2.0 Scope

This directive applies to all organizations and agencies on the ENN. Implementation of this directive will require that interfacing procedures be developed for each dispatcher station.

3.0 Description

An ENN unit is installed at the following locations:

FNP Technical Support Center

FNP Emergency Operations Facility

APCo Company Control Center

Alabama Department of Radiological Health*

Alabama Department of Civil Defense*

Alabama Department of Public Safety*

Houston County Sheriff Dispatcher

Houston County Office of Civil Defense

Houston County Office of Radiological Health

Early County (GA) Sheriff Dispatcher

*Located in Montgomery

APPENDIX 2

INITIAL MESSAGE

This is _____, the Emergency Director at Farley Nuclear Plant.

(Name)

1. This is to inform you that an emergency classified as:

- ☐ Notification of Unusual Event
☐ Alert
☐ Site Area Emergency
☐ General Emergency

has occurred involving Unit(s) _____.

2. ☐ A release is not in progress.
☐ A release may be in progress.
☒ A liquid release is in progress.
☐ An atmospheric release is in progress.

3. Atmospheric

Liquid

Release Point _____

Release Point _____

Magnitude _____

Wind direction 35': (from) _____°; (to) _____°

Wind direction 150': (from) _____°; (to) _____°

Wind speed 35': _____ mph ÷ 2 _____ meter/sec

Wind speed 150': _____ mph ÷ 2 _____ meter/sec

4. On-site situation (circle):

- a. Evacuation of on-site personnel: Yes No Some
b. Recommended protective actions: None Shelter Evacuate
c. Assistance needed: Fire Police Ambulance Other
d. Prognosis of situation: Terminated Stable Worsening Other

Further information will be transmitted as soon as it is available.

APPENDIX 3

FOLLOW-UP MESSAGE

1. This is _____ at Farley Nuclear Plant.
Name/Title
2. An incident occurred at _____ (time) on _____ (date).
3. The incident was classified as (circle):
 - a. Notification of Unusual Event
 - b. Alert
 - c. Site Area
 - d. General
4. Type of release (circle):
 - a. Airborne
 - b. Waterborne
 - c. Surface Spill
5. Estimated duration/impact times of release: _____

6. Release Information
 - a. Noble gas concentration at effluent point: _____ $\mu\text{Ci/cc}$
 - b. Iodine concentration at effluent point: _____ $\mu\text{Ci/cc}$
 - c. Effluent flow rate: _____ cfm
Conversion factor: $1.7 \times 10^6 \text{ cc/sec-cfm}$ _____ cc/sec
 - d. Noble gas activity release rate: _____ $\mu\text{Ci/sec}$
 - e. Iodine activity release rate: _____ $\mu\text{Ci/sec}$
7. Height of release (circle):
 - a. Ground elevation, EL 155
 - b. Ventstack, EL 299
8. Description of released material (chemical & physical form, estimate of relative quantities of noble gases, particulating and iodines.)

9. Meteorological conditions (heights given with respect to base at EL 182):

- a. Wind speed @ 35': _____ mph \div 2 = _____ meter/sec
- b. Wind speed @ 150': _____ mph \div 2 = _____ meter/sec
- c. Wind direction @ 35': _____ degrees (from which wind is blowing)
- d. Downwind direction @ 35': _____ degrees (to which wind is blowing)
- e. Wind direction @ 150': _____ degrees (from which wind is blowing)
- f. Downwind direction @ 150': _____ degrees (to which wind is blowing)
- g. ΔT between 35' and 200': _____ degrees F
- h. Stability classification (check):

- () A: $<-1.74^{\circ}\text{F}$
- () B: -1.74 to -1.56°F
- () C: -1.56 to -1.38°F
- () D: -1.38 to -0.46°F
- () E: -0.46 to 1.38°F
- () F: 1.38 to 3.6°F
- () G: $>3.6^{\circ}\text{F}$

i. Form of precipitation: _____

10. Dose rates at site boundary (circle):

Actual Projected Value: _____ mrem/hr

Miles	2	5	10
Meters	3,226	8,065	16,130

11. Projected dose rates at: _____
- Projected integrated dose at: _____
12. Estimate of resulting offsite surface radioactive contamination: _____

13. Emergency response actions underway: _____

14. Recommended emergency actions/protective measures (circle):

None Shelter Evacuation

Other _____

WESTINGHOUSE EVENT DATA CHECKLIST INFORMATION

INDIVIDUAL RECEIVING DATE: _____ TIME: _____

FARLEY NUCLEAR PLANT

_____ EVENT

RCS PARAMETERS

1. RCS Pressure	_____	psia
2. Trend	Up / Down / Stable	
3. Przr. Level	_____	% Span
4. Trend	Up / Down / Stable	
5. Przr. Liquid Temp./Steam Temp.	_____	°F
6. Przr. Heaters	On / Off	

RCS MAKEUP FLOW STATUS

7. Safety Injection, Flowrate	On / Off	_____	gpm
8. RWST Level	E _____ F		
9. Normal Makeup, Flowrate In	On / Off,	_____	gpm
10. Letdown Flowrate	_____		gpm/isolated

NSSS LOOP PARAMETERS

	A	LOOP B	C
11. Wide Range T _h (°F)	_____	_____	_____
12. Wide Range T _h (°F)	_____	_____	_____
13. RCP Status (On/Off)	_____	_____	_____
14. S.G. Pressure (psia)	_____	_____	_____
15. Trend	Up / Down / Stable		
16. S.G. Level, Wide Range (% Span)	_____	_____	_____
17. S.G. Narrow Range (% Span)	_____	_____	_____
18. Trend	Up / Down / Stable		
19. Steam Flow (% Nominal	_____	_____	_____
20. MSIV Status Open/Closed	_____	_____	_____
21. Main Feedwater Flow (gpm)	_____	_____	_____
22. Auxiliary Feedwater Flow(gpm)	_____	_____	_____
23. Condensate Storage Tank Level	E _____ F		

CONTAINMENT PARAMETERS

24. Containment Pressure, Temp.	_____	psig _____ °F
25. Containment Radiation	_____	
26. Recirculation Sump Level	_____	
27. Hydrogen Concentration	_____	%

NOTES: _____
