



PSE&G Public Service
Electric and Gas
Company

80 Park Plaza, Newark, NJ 07101 / 201 430-7000

MAILING ADDRESS / P.O. Box 570, Newark, NJ 07101

July 8, 1983

Director of Nuclear Reactor Regulation
United States Nuclear Regulatory Commission
7920 Norfolk Avenue
Bethesda, Maryland 20014

Attention: Mr. Albert Schwencer, Chief
Licensing Branch 2
Division of Licensing

Gentlemen:

HOPE CREEK GENERATING STATION
DOCKET NO. 50-354
ACCEPTANCE REVIEW RESPONSE

Your letter "Acceptance Review of Application for OL License for Hope Creek Generating Station, Unit No. 1" dated June 23, 1983 (Darrell G. Eisenhut, NRC to R. L. Mittl, PSE&G) requested that we document the bases for our confidence that the start of the licensing activities for Hope Creek will not detract from PSE&G's efforts on Salem. This letter discusses our ability to concurrently support a licensing effort on the Hope Creek Generating Station application and give adequate attention to the safe operation of the Salem facility, as we expressed in telecons with you on June 6, 1983 and June 21, 1983.

The Salem and Hope Creek facilities are the responsibility of the Senior Vice President - Energy Supply and Engineering, Attachment 1. In turn, the responsibility for each of these facilities is assigned to a separate Vice President. The Vice President - Engineering and Construction is responsible for the construction of new facilities while the Vice President - Nuclear is responsible for the operation of nuclear facilities.

More specifically, the engineering, construction, and quality assurance for Hope Creek up to the initial receipt of an operating license is the responsibility of the Vice President - Engineering and Construction with nuclear and environmental licensing support functions provided by the General Manager - Nuclear Assurance and Regulation, Attachments 2 and 3. Operational review and input for engineering and licensing efforts on Hope Creek is provided by the General Manager - Hope Creek Operations in the Nuclear Department, utilizing a staff dedicated to the Hope Creek facility, Attachments 4 and 5.

8307130287 830708
PDR ADOCK 05000354
A PDR

3001
11

The Energy People

7-8-83

The Bechtel Power Corporation has been retained by the Engineering and Construction Department and serves as the architect-engineer and constructor for Hope Creek.

The operation, maintenance, engineering, core analysis, licensing and quality assurance for Salem are the responsibility of the Vice President - Nuclear, Attachments 4 through 8.

In summary, the licensing effort for Hope Creek will be supported by our Engineering and Construction Department, the Bechtel Power Corporation, the Nuclear Assurance and Regulation Department and that segment of the Nuclear Department dedicated to Hope Creek and reporting to the General Manager - Hope Creek Operations. This alignment of responsibilities ensures that other segments of the Nuclear Department are available to focus on the safe operation of the Salem facility.

Chapters 13 and 17 of the Final Safety Analysis Report will be amended in accordance with the organizational charts attached herein. This amended material will be included with our response to enclosures 2, 3, and 4 of your June 23, 1983 letter.

We trust that the information provided herein clearly documents the fact that the start of the licensing activities for Hope Creek will not detract from our efforts on Salem. Furthermore, we believe this documentation should enable your staff to start review of the Hope Creek application. Should you have any questions in this regard, do not hesitate to contact us.

Very truly yours,



R. L. Mittl
General Manager -
Nuclear Assurance and Regulation

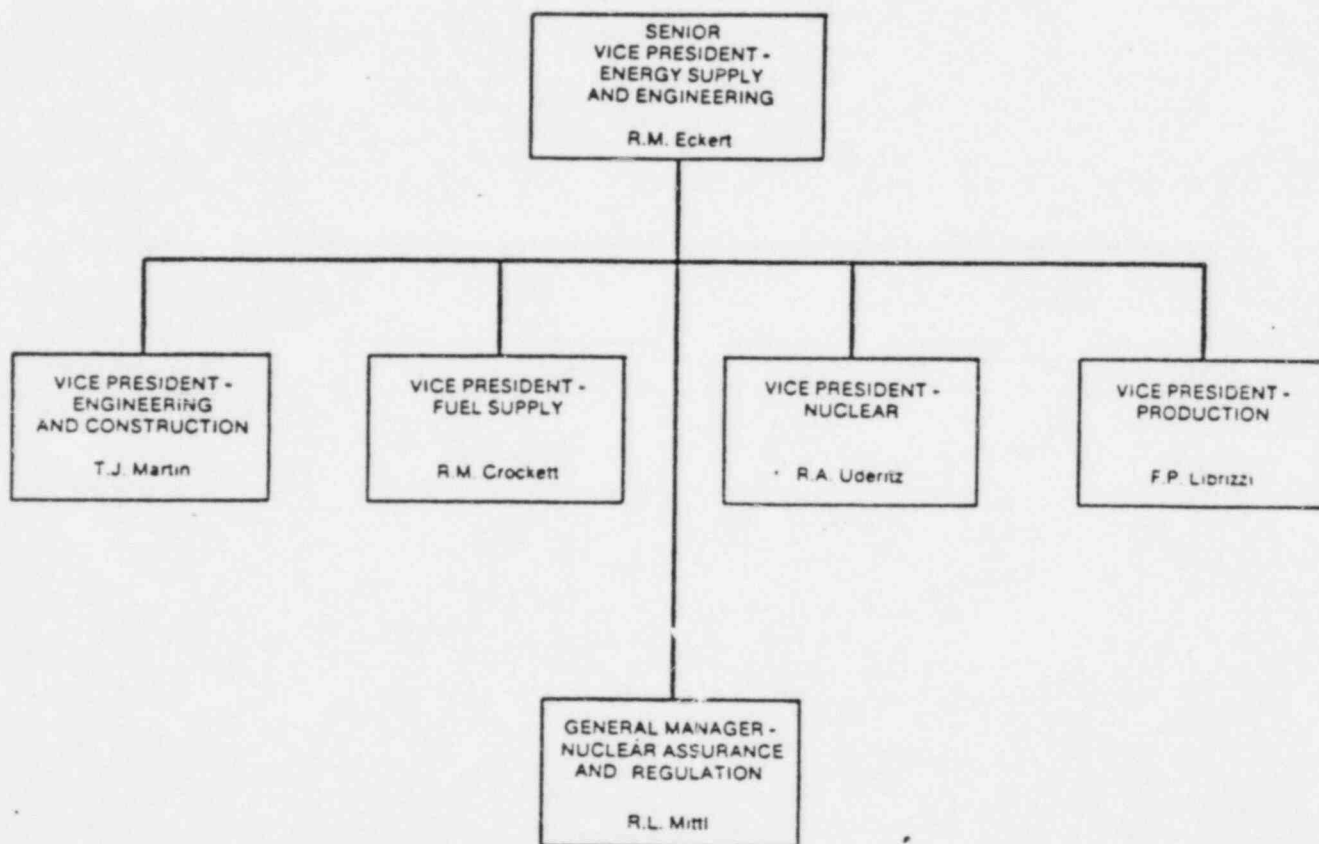
Attachments

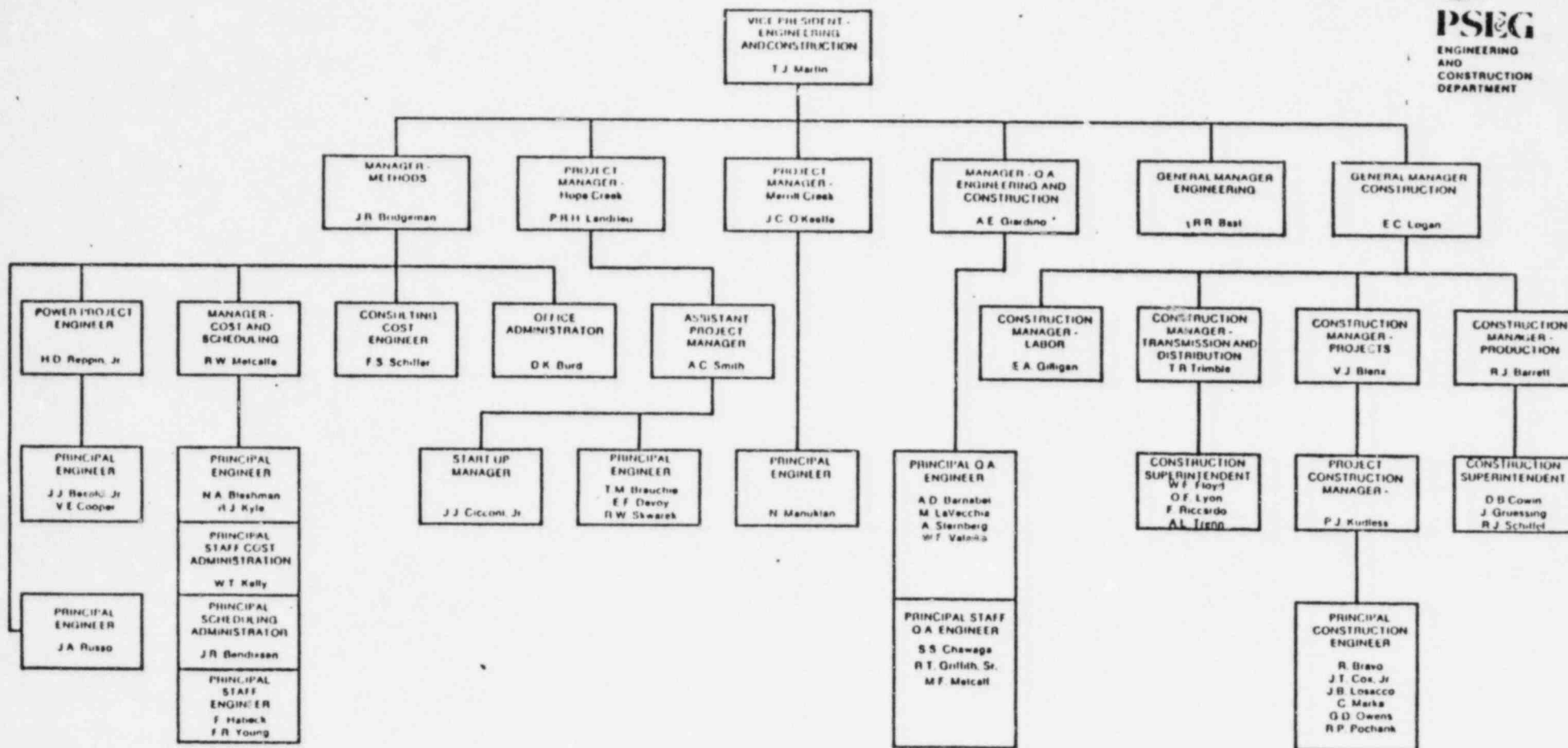
CC Mr. D. H. Wagner - w/attachments
USNRC Licensing Project Manager

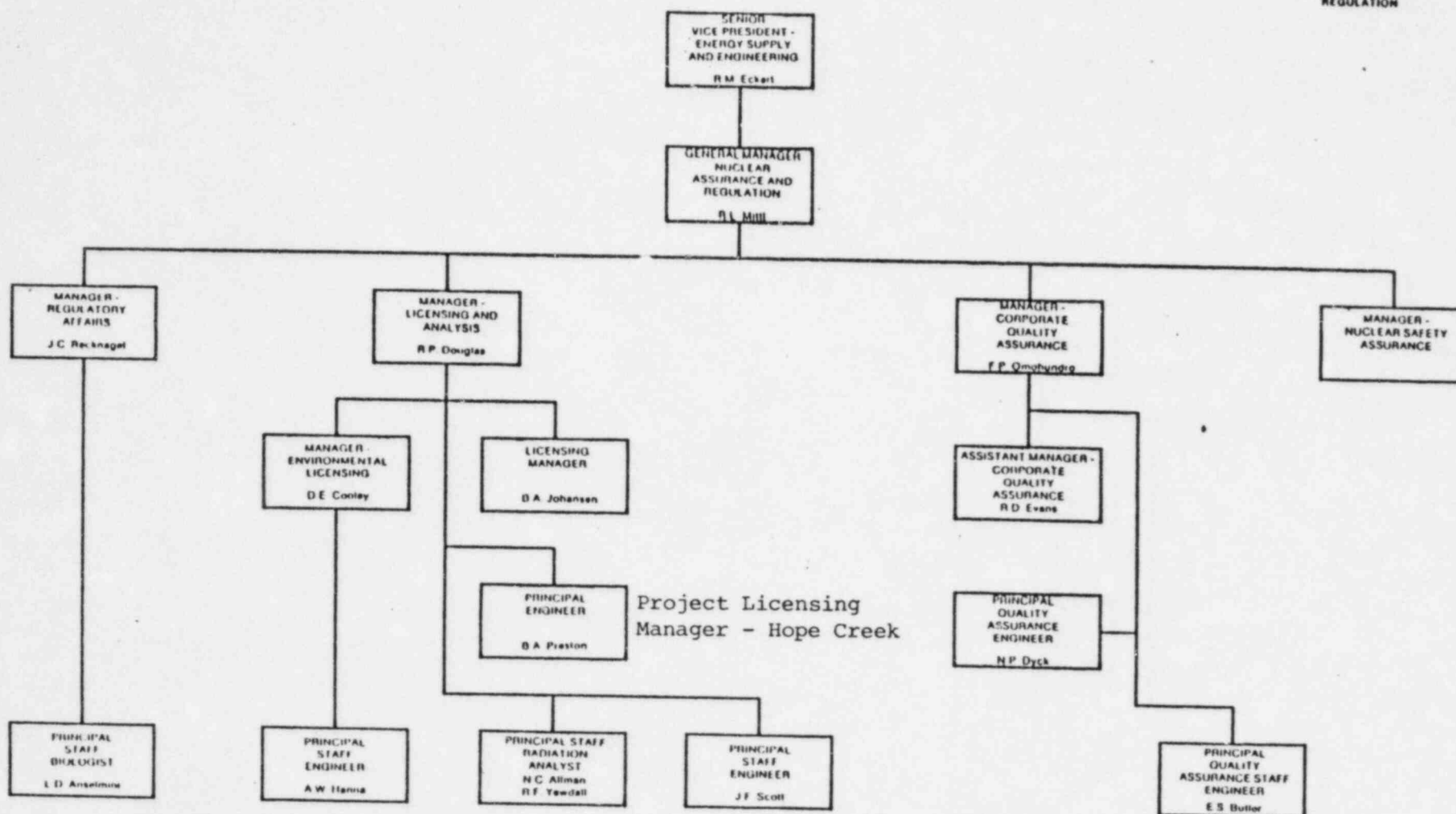


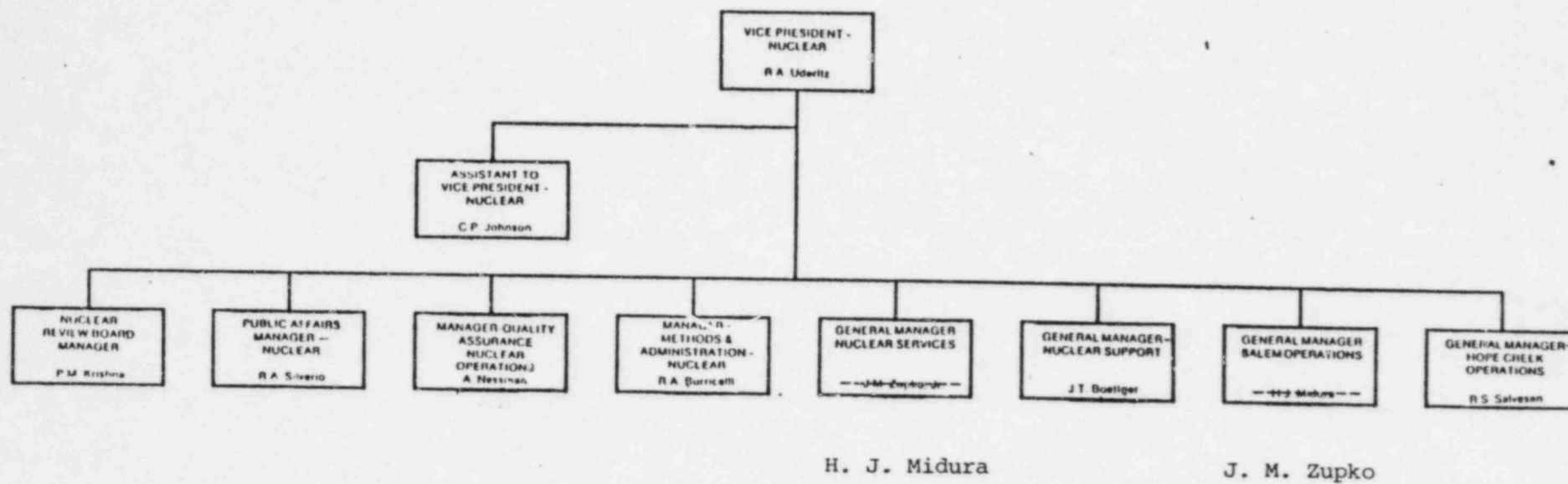
PSEG

OFFICE OF
SENIOR VICE PRESIDENT -
ENERGY SUPPLY AND
ENGINEERING

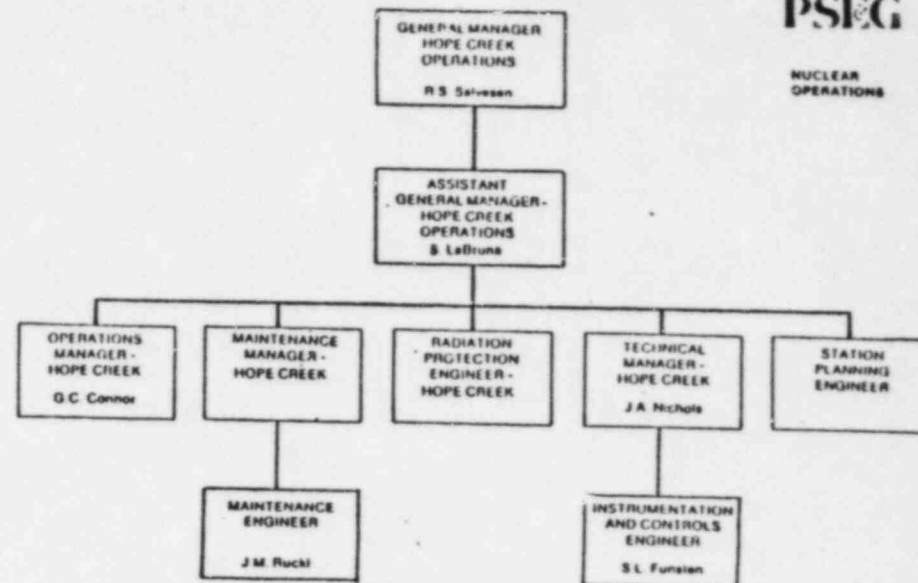
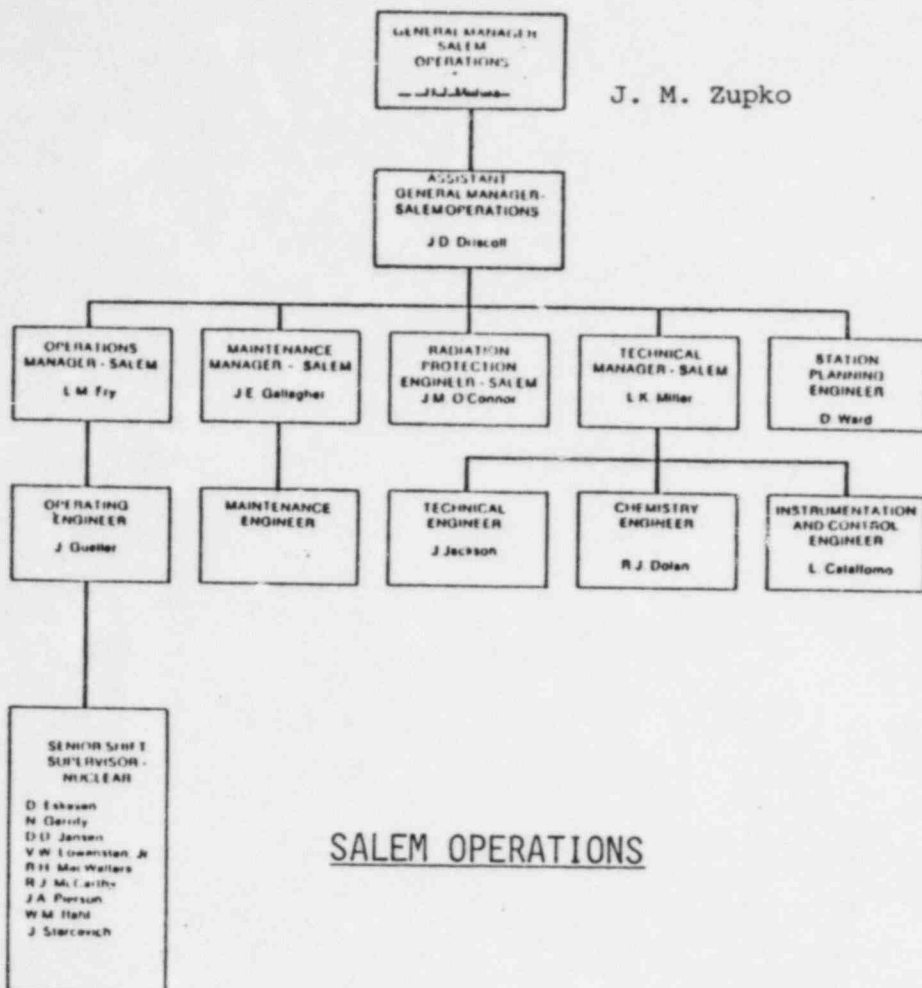


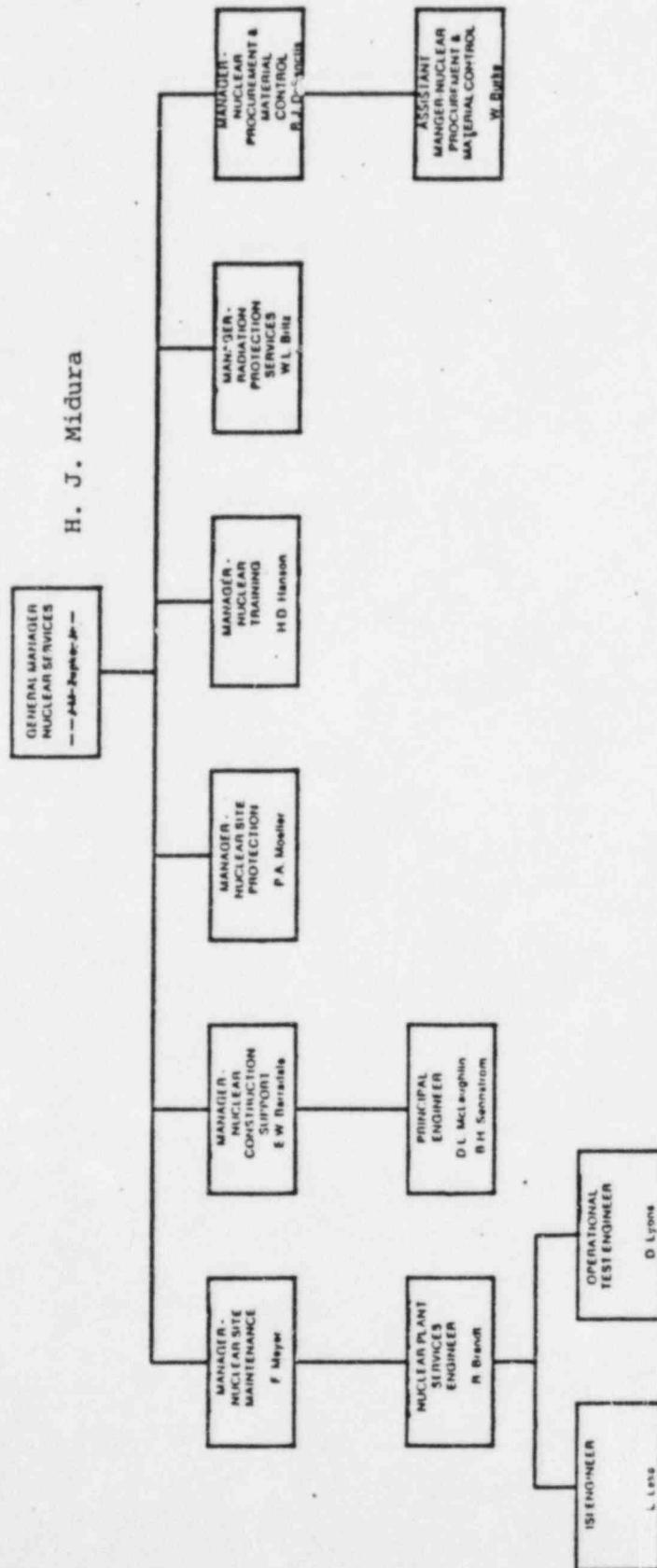


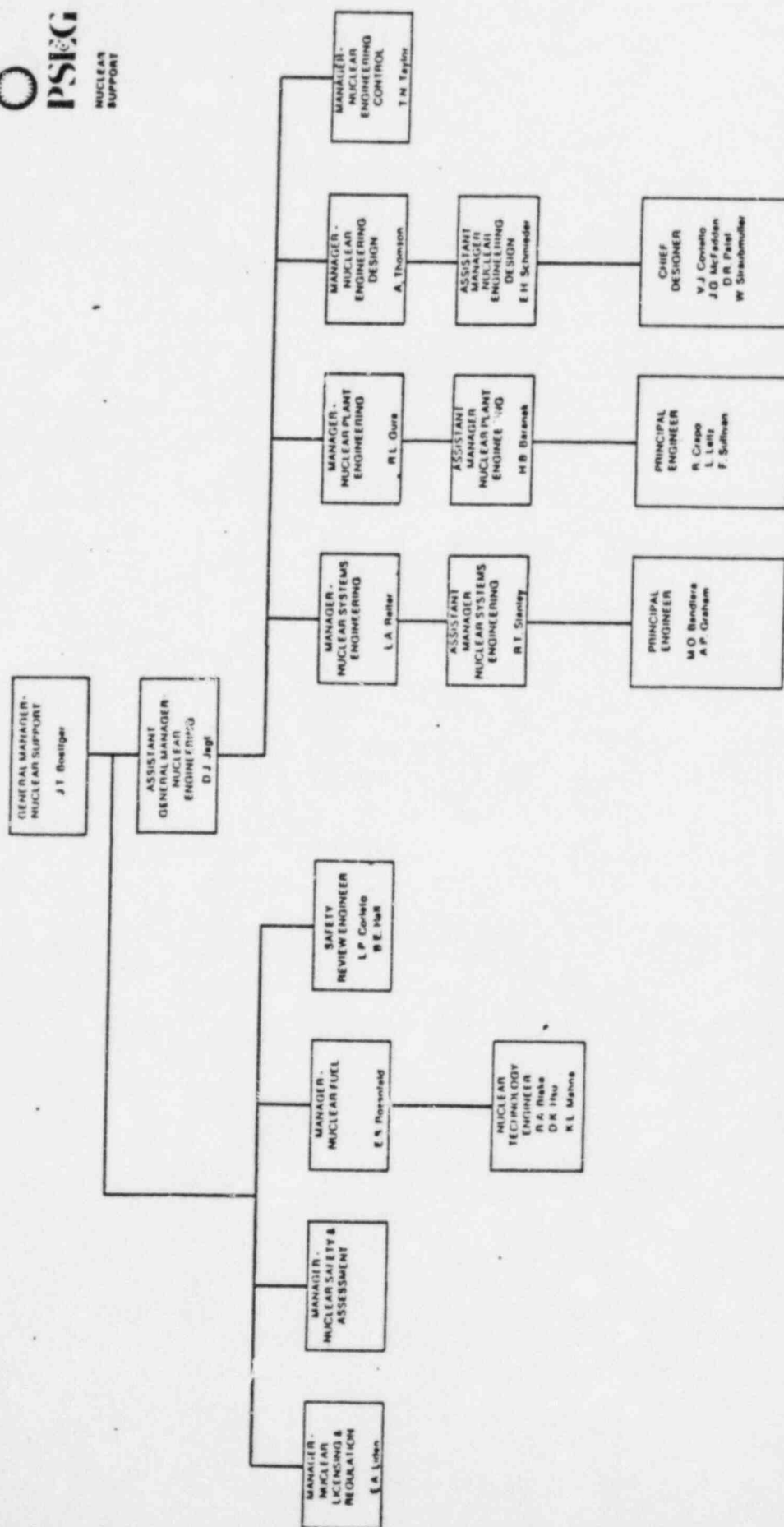




J. M. Zupko







**PSEG**QUALITY ASSURANCE
NUCLEAR OPERATIONS