

ATTACHMENT II

WASHINGTON PUBLIC POWER SUPPLY SYSTEM
NUCLEAR PROJECT NO. 2
DOCKET NO. 50-397
LICENSE NO. CPPR-93
10CFR50.55(e) CONDITION #258
RHR HEAT EXCHANGER INSTALLATION

INTERIM REPORT

Description of Deficiency

The RHR system has been subjected to an independent design review. A review of the RHR heat exchanger installation package identified that the installation requirements of General Electric specification 22A5233 "Installation Instruction for RHR Heat Exchanger" were not complied with. Requirements for shims to be placed to meet the requirements of FIG. 5-1 and 5-3 (attached) had not been implemented. Field inspection verified that the shims had in fact not been installed as required.

This specific deficiency identified a possible breakdown in the contractor's system for assuring that equipment installation requirements were properly tracked to completion and complied with vendor installation requirements.

Safety Significance

The requirements for shims on the RHR heat exchangers (Ref. Attachment 3) at the bottom support are to transfer shear forces into the baseplate, and at the top keyway brackets to control movement, both conditions imposed by a seismic event. The absence of the shims would impose undefined loads into the building support structure, the heat exchangers supports and connected piping, which is unacceptable.

The implications of other safety-related equipment installation not being complete or in compliance with vendor installation requirements is a potential generic deficiency for which the safety significance can only be evaluated after an extensive review by the contractor (Bechtel).

These conditions are considered to be a reportable deficiency under 10CFR50.55e.

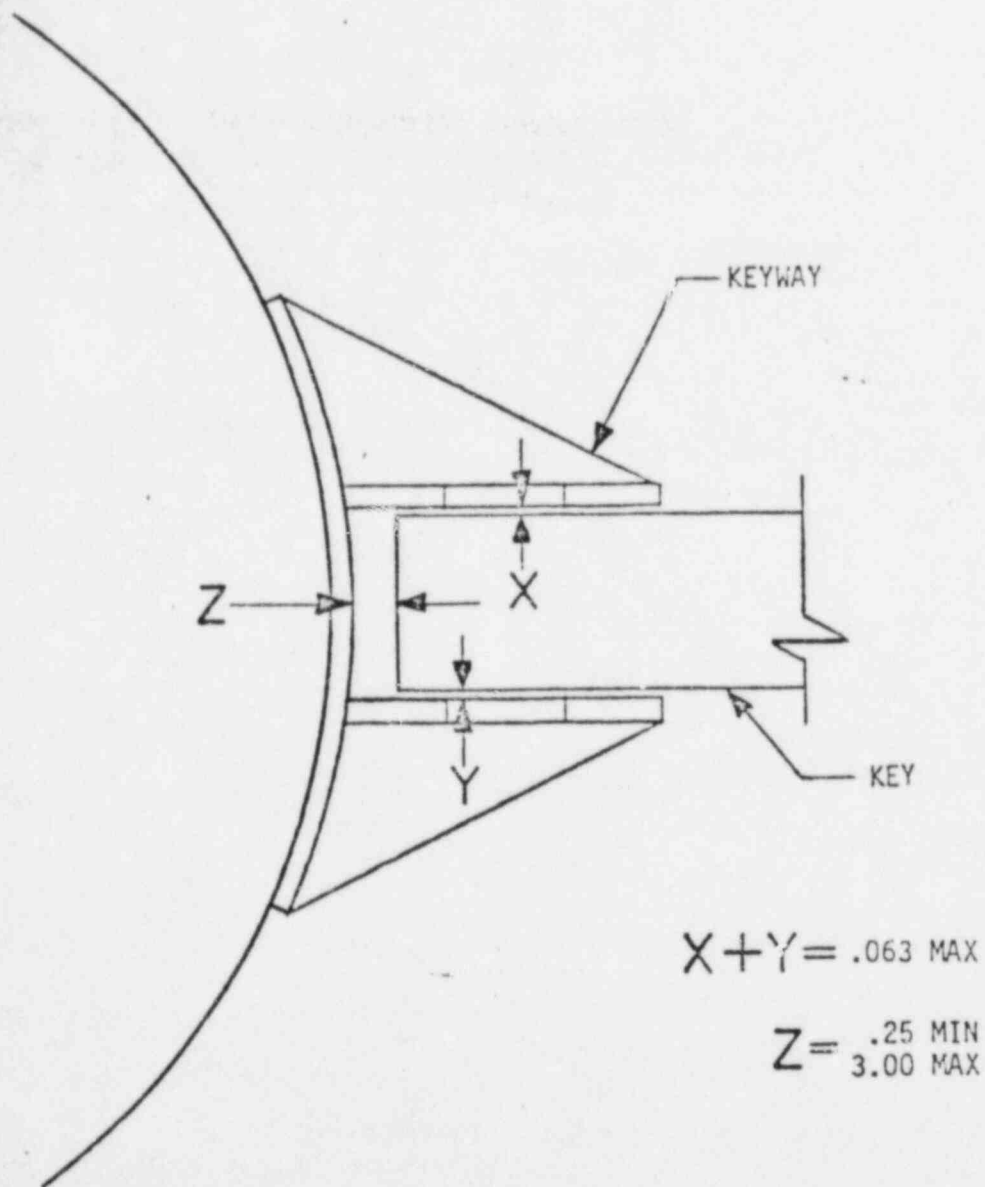
Corrective Action

The contractor review determined that an open PED (215-CS-2677, dated April 8, 1980) existed concerning shimming the top keyway (guide) which indicated the contractors (WBG/Bechtel) were aware of shimming requirements in this area, although they had never been implemented.

Due to the status of construction on the baseplates, Burns and Roe issued PED 215-CS-P531 to install new shear plates in lieu of the shims indicated in FIG. 5-2 (attached). The contractor has completed implementation of these PED's (215-CS-2677 and 215-CS-P531) and is also conducting an extensive review of the equipment installation and align records. Three hundred eighty-three (383) equipment packages have been identified for review and sixty-three (63) have been completed as of June 20, 1983.

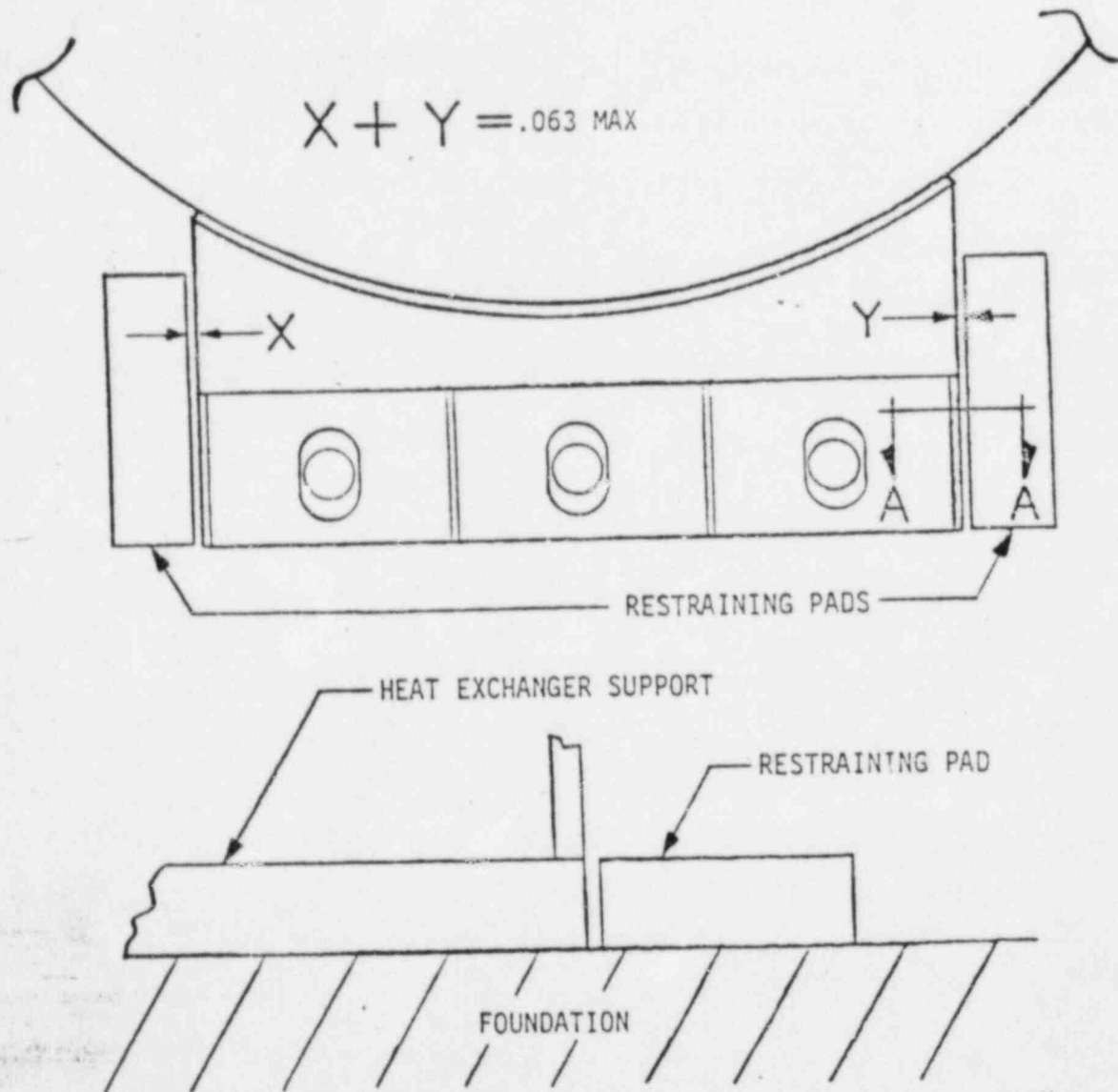
No formal evaluation has yet been made of the findings resulting from the review. Corrective action determined to be required is being processed via normal project procedures. The review is scheduled to be complete in early August.

We will continue to provide your office with quarterly updates. The next report will be submitted on or before September 21, 1983.



KEY TO KEYWAY FITUP

FIG. 5-1



SECTION A-A

SUPPORT RESTRAINING PADS

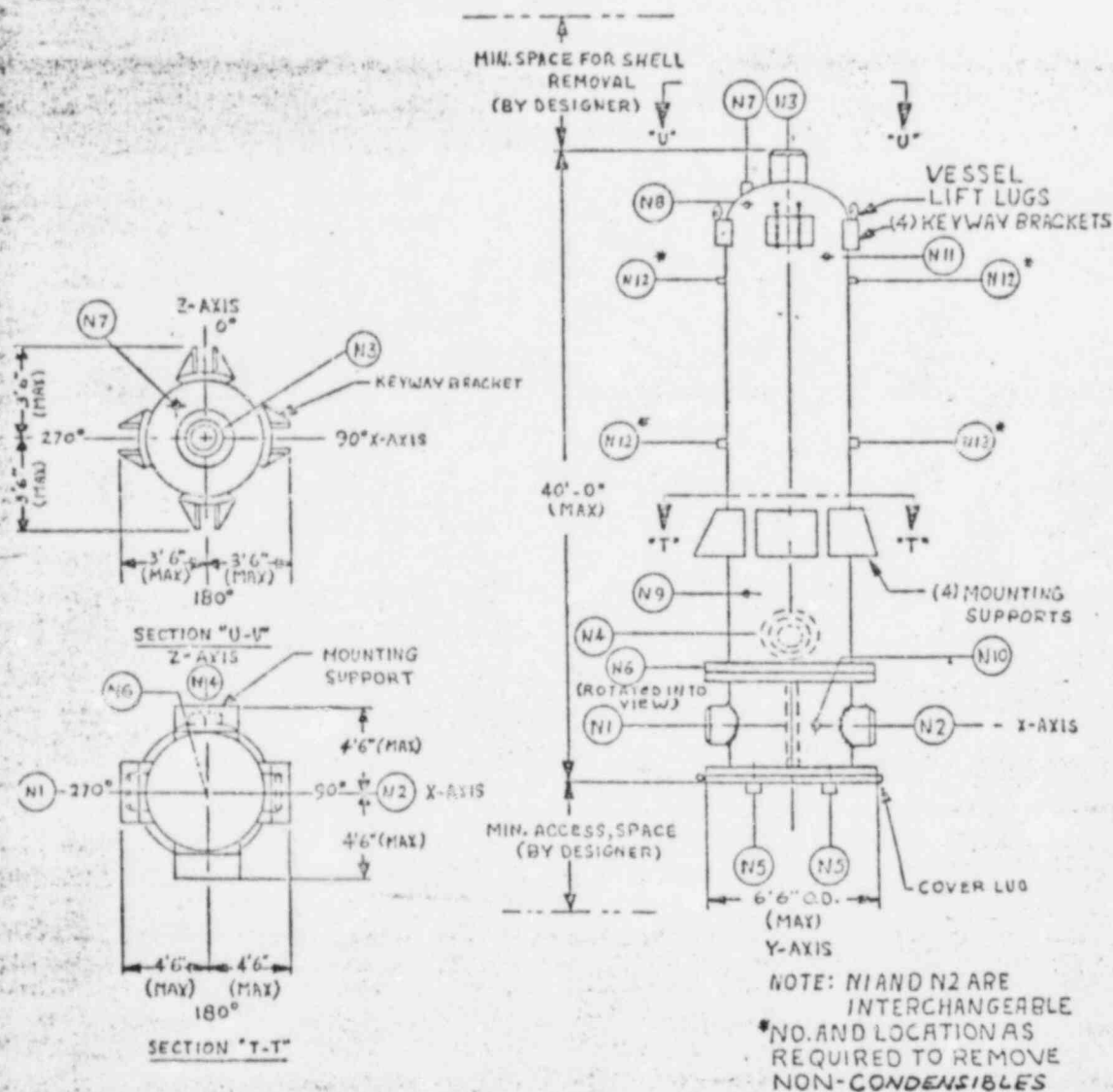
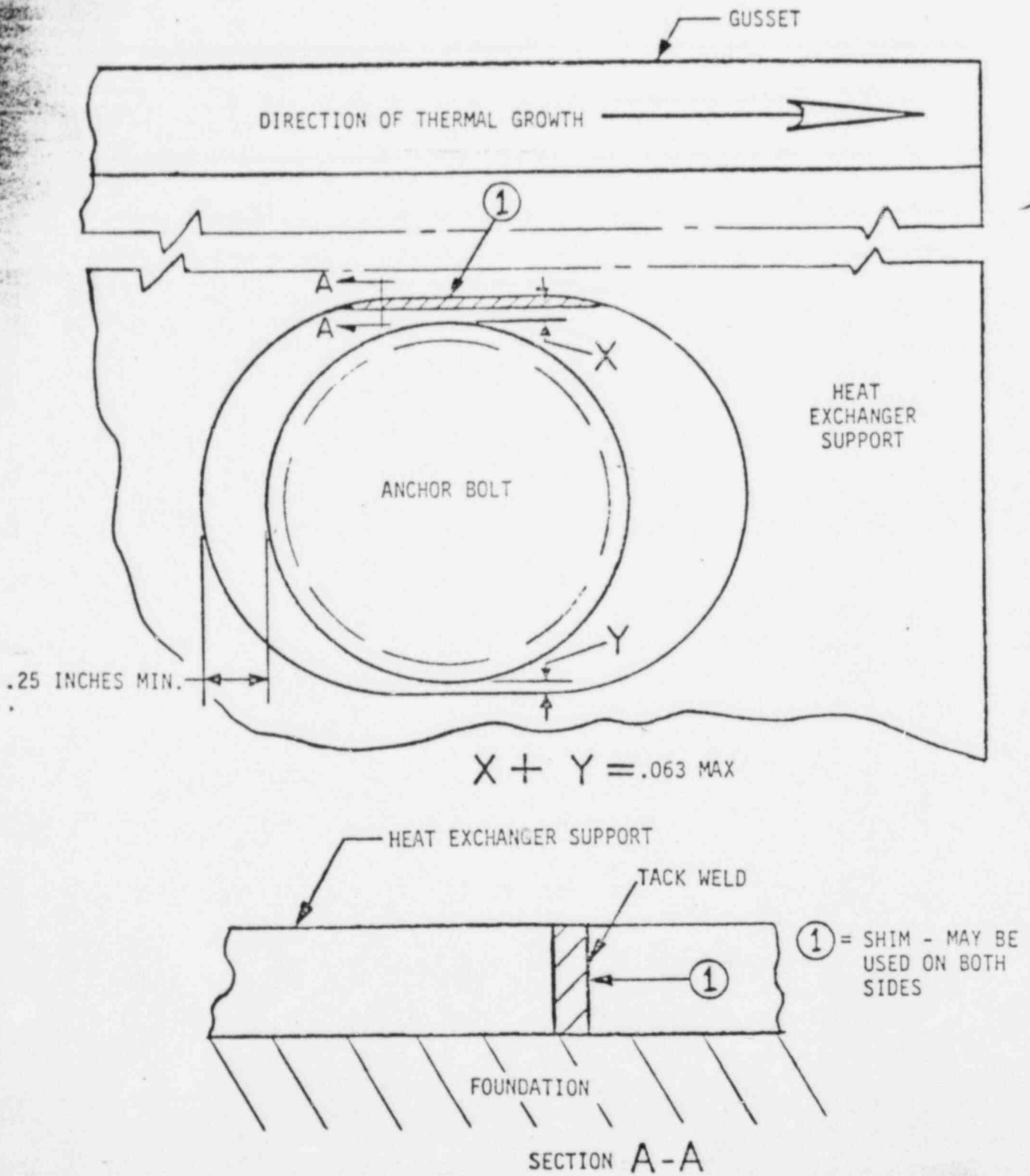


FIGURE 1
RHR HEAT EXCHANGER



ANCHOR BOLT SHIMMING METHOD