

OPERATING DATA REPORT

DOCKET NO. 50-302
 DATE 6/1/83
 COMPLETED BY D.S. Bogart
 TELEPHONE (904) 795-6486

OPERATING STATUS

1. Unit Name: Crystal River Unit 3
2. Reporting Period: 5/1/83 - 5/31/83
3. Licensed Thermal Power (MWt): 2544
4. Nameplate Rating (Gross MWe): 890
5. Design Electrical Rating (Net MWe): 825
6. Maximum Dependable Capacity (Gross MWe): 850
7. Maximum Dependable Capacity (Net MWe): 811
8. If Changes Occur in Capacity Ratings (Items Number 3 Through 7) Since Last Report, Give Reasons:
N/A

Notes

9. Power Level To Which Restricted, If Any (Net MWe): N/A
10. Reasons For Restrictions, If Any: N/A

	This Month	Yr.-to-Date	Cumulative
11. Hours In Reporting Period	744	3623	54503
12. Number Of Hours Reactor Was Critical	0	1859.3	34066.5
13. Reactor Reserve Shutdown Hours	0	0	1280.3
14. Hours Generator On-Line	0	1859.3	33326.2
15. Unit Reserve Shutdown Hours	0	0	0
16. Gross Thermal Energy Generated (MWH)	0	4488404	75013359
17. Gross Electrical Energy Generated (MWH)	0	1573896	25540513
18. Net Electrical Energy Generated (MWH)	0	1502253	24247133
19. Unit Service Factor	0%	51.3%	61.1%
20. Unit Availability Factor	0%	51.3%	61.1%
21. Unit Capacity Factor (Using MDC Net)	0%	51.1%	56.4%
22. Unit Capacity Factor (Using DER Net)	0%	50.3%	53.9%
23. Unit Forced Outage Rate	0%	0%	25.0%

24. Shutdowns Scheduled Over Next 6 Months (Type, Date, and Duration of Each):

Refuel Outage which began 3/19/83, scheduled to last 16 weeks.

25. If Shut Down At End Of Report Period, Estimated Date of Startup: 7/9/83

26. Units In Test Status (Prior to Commercial Operation):	Forecast	Achieved
INITIAL CRITICALITY	_____	<u>1/14/77</u>
INITIAL ELECTRICITY	_____	<u>1/30/77</u>
COMMERCIAL OPERATION	_____	<u>3/13/77</u>

AVERAGE DAILY UNIT POWER LEVEL

DOCKET NO. 50-302

UNIT FLCRP-3

DATE 6/1/83

COMPLETED BY D.S. Bogart

TELEPHONE (904) 795-6486

MONTH May 1983

DAY AVERAGE DAILY POWER LEVEL
(MWe-Net)

1	<u>0</u>
2	<u>0</u>
3	<u>0</u>
4	<u>0</u>
5	<u>0</u>
6	<u>0</u>
7	<u>0</u>
8	<u>0</u>
9	<u>0</u>
10	<u>0</u>
11	<u>0</u>
12	<u>0</u>
13	<u>0</u>
14	<u>0</u>
15	<u>0</u>
16	<u>0</u>

DAY AVERAGE DAILY POWER LEVEL
(MWe-Net)

17	<u>0</u>
18	<u>0</u>
19	<u>0</u>
20	<u>0</u>
21	<u>0</u>
22	<u>0</u>
23	<u>0</u>
24	<u>0</u>
25	<u>0</u>
26	<u>0</u>
27	<u>0</u>
28	<u>0</u>
29	<u>0</u>
30	<u>0</u>
31	<u>0</u>

INSTRUCTIONS

On this format, list the average daily unit power level in MWe-Net for each day in the reporting month. Compute to the nearest whole megawatt.

UNIT SHUTDOWNS AND POWER REDUCTIONS

DOCKET NO. 50-302UNIT NAME FLCRP-3DATE 6/6/83COMPLETED BY D. FieldsTELEPHONE (904) 795-6486REPORT MONTH 5/83

No.	Date	Type ¹	Duration (Hours)	Reason ²	Method of Shutting Down Reactor ³	Licensee Event Report #	System Code ⁴	Component Code ⁵	Cause & Corrective Action to Prevent Recurrence
83-07	830501	S	744	C	4	N/A	RC	FUELXX	Refueling Outage. During manual shutdown of the reactor for the refueling outage, the plant experienced a feedwater pump trip which initiated an automatic scram.

¹
F: Forced
S: Scheduled

²
Reason:
A-Equipment Failure (Explain)
B-Maintenance of Test
C-Refueling
D-Regulatory Restriction
E-Operator Training & License Examination
F-Administrative
G-Operational Error (Explain)
H-Other (Explain)

³
Method:
1-Manual
2-Manual Scram.
3-Automatic Scram.
4-Other (Explain)

⁴
Exhibit G - Instructions
for Preparation of Data
Entry Sheets for Licensee
Event Report (LER) File (NUREG-
0161)

⁵
Exhibit I - Same Source

MONTHLY OPERATIONAL SUMMARY STATEMENT

DOCKET NO. 50-302

UNIT FLCRP-3

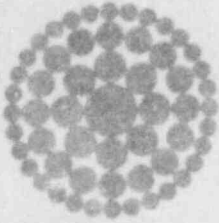
DATE 6/6/83

COMPLETED BY D. Fields

TELEPHONE (904) 795-6486

MONTH May 1983

SUMMARY STATEMENT: Shutdown all month for Refuel IV.



**Florida
Power**
CORPORATION

June 13, 1983
3F-0683-04

Mr. Richard C. DeYoung, Director
Office of Inspection and Enforcement
U. S. Nuclear Regulatory Commission
Attn: Document Control Desk
Washington, D. C. 20555

Subject: Crystal River Unit 3
Docket No. 50-302
Operating License No. DPR-72
Monthly Operating Report

Dear Mr. DeYoung:

Attached are twelve (12) copies of the Crystal River Unit 3, May 1983, Monthly Operating Report. This report is submitted in accordance with Technical Specification 6.9.1.6.

Sincerely,

Gary R. Westafer
Manager
Nuclear Licensing and Fuel Management

AEF:mmn

cc: Mr. J. P. O'Reilly
Regional Administrator, Region II
Office of Inspection & Enforcement
U. S. Nuclear Regulatory Commission
101 Marietta Street N.W., Suite 2900
Atlanta, GA 30303

JE24
11