

DUKE POWER COMPANY

P.O. BOX 33189
CHARLOTTE, N.C. 28242

HAL B. TUCKER
VICE PRESIDENT
NUCLEAR PRODUCTION

TELEPHONE
(704) 373-4531

January 19, 1983

Mr. Harold R. Denton, Director
Office of Nuclear Reactor Regulation
U. S. Nuclear Regulatory Commission
Washington, D. C. 20555

Attention: Ms. E. G. Adensam, Chief
Licensing Branch No. 4

Re: McGuire Nuclear Station
Docket Nos. 50-369, 50-370
Outstanding Information Responses

Dear Mr. Denton:

In response to Ms. Elinor G. Adensam's (NRC/DOL) letter of November 24, 1982, my December 22, 1982 letter transmitted several outstanding information responses needed for the NRC to complete its review of the Unit 2 operating license application as well as Unit 1 close out matters. Among the items transmitted were four Unit 2 relief requests, serial numbers MC-2-001 through 004 (reference Attachments 2A through 2D of my December 22, 1982 letter), for preservice examination.

Please find attached a fifth Unit 2 relief request, serial number MC-2-005. This problem was discovered towards the end of the inspection and it is anticipated that this will be the final relief request. This matter has been previously discussed with your staff in a telecon between Mr. P. B. Nardoci, et.al. (DPC) and Mr. R. Birkel, et.al. (NRC/NRR) on January 18, 1982. Should you have any questions with the attached information, please advise.

Very truly yours,

Hal B. Tucker

Hal B. Tucker

PBN:jfw

Attachment

cc: Mr. James P. O'Reilly, Regional Administrator
U. S. Nuclear Regulatory Commission
Region II
101 Marietta Street, Suite 3100
Atlanta, Georgia 30303

Senior Resident Inspector
McGuire Nuclear Station

Mr. J. F. Cook
EG&G Idaho
Idaho Falls, Idaho 83415

8301240123 830119
PDR ADDCK 0500C 370
G PDR

3021

DUKE POWER COMPANY
Request For Relief From
Inservice Inspection Requirement

Station: McGuire Nuclear Station

Unit: 2

Reference Code: ASME Boiler and Pressure Vessel Code, Section XI 1974
Edition through Summer 1975

I. Component for which exemption is requested:

a. Name and Identification Number:

Reactor Coolant Loop Piping
Attachment Weld NC2FW 83-H47

b. Function:

Reactor Coolant Pressure Boundary

c. ASME Section III Code Class:

Class I

d. Valve Category: NA

II. Reference Code Requirement that has been determined to be impractical:

Table IWB-2600 Item No. B4.9 requires volumetric examination for integrally welded supports. Ultrasonic examination is impractical due to configuration, and radiography cannot be performed for inservice inspection due to accessibility. See Attachment 1 & 2

III. Basis for Requesting Relief:

Estimate of preservice examination performed - 0%
Original fabrication examination - dye penetrant
Measures which would be required to make the area accessible - Removal
of Hanger 2MCR-NC-4203

III. Basis for Requesting Relief (cont.)

Removal of hanger would not give a meaningful volumetric examination. Construction examination provided adequate assurance of component reliability.

IV. Alternate Examination: None Available

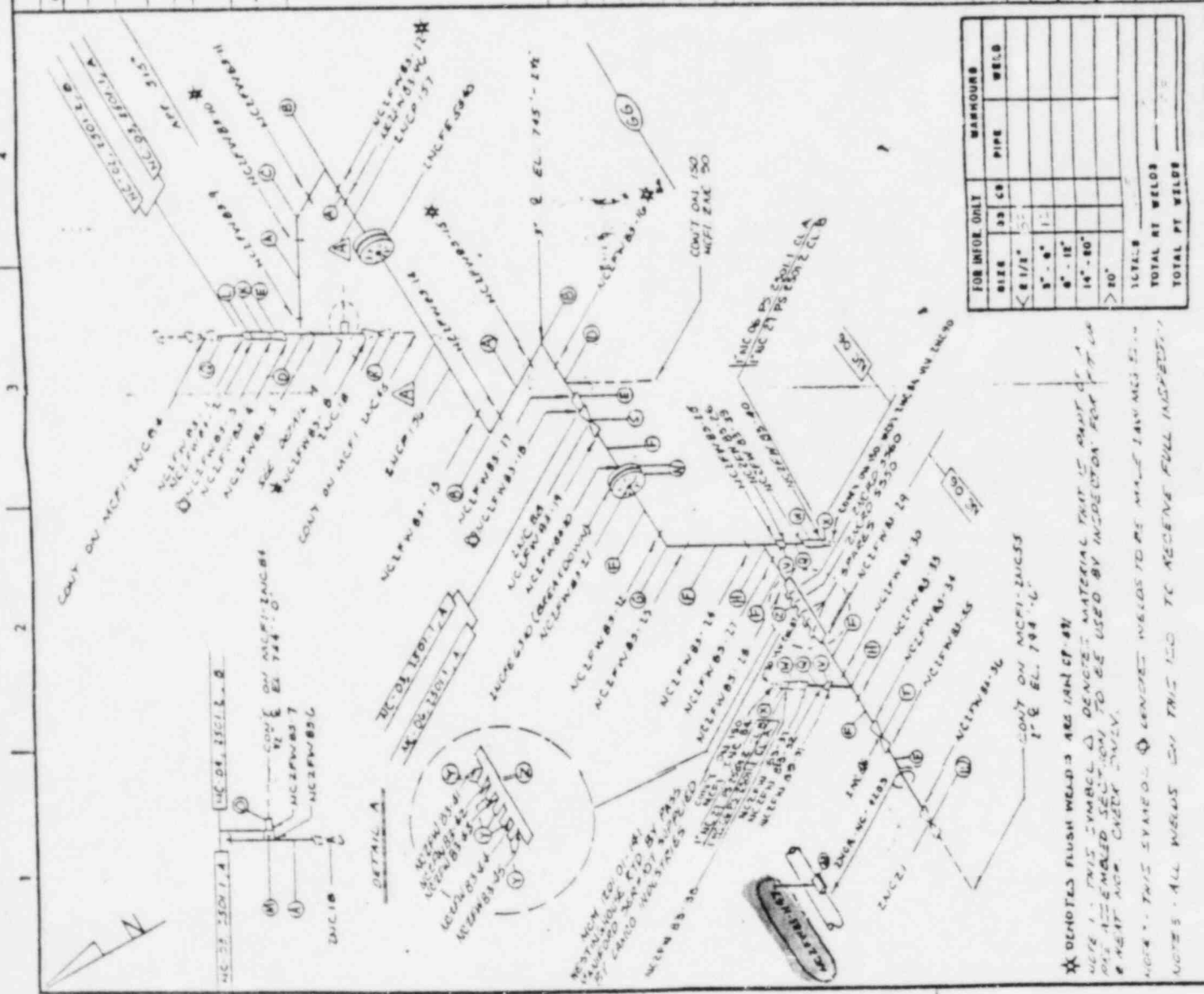
V. Implementation Schedule: No inspection due to accessibility.

REV	DATE	DESCRIPTION	BY	CHKD	APPN
0	10/1/79	REV. FOR CON. VAL. 20.545			
1	10/1/79	REV. FOR CON. VAL. 20.545			
2	10/1/79	ADD MAT. ID. AT WELD - 33			
3	10/1/79	REV. FOR CON. VAL. 20.545			
4	10/1/79	REV. FOR CON. VAL. 20.545			
5	10/1/79	REV. FOR CON. VAL. 20.545			
6	10/1/79	REV. FOR CON. VAL. 20.545			
7	10/1/79	REV. FOR CON. VAL. 20.545			

UNCONTROLLED
COPY
NOT FOR
CONSTRUCTION

ITEM	SIZE	QTY	UNIT	DESCRIPTION	REMARKS
1	1/2"	1	PC	PIPE	
2	1/2"	1	PC	PIPE	
3	1/2"	1	PC	PIPE	
4	1/2"	1	PC	PIPE	
5	1/2"	1	PC	PIPE	
6	1/2"	1	PC	PIPE	
7	1/2"	1	PC	PIPE	
8	1/2"	1	PC	PIPE	
9	1/2"	1	PC	PIPE	
10	1/2"	1	PC	PIPE	
11	1/2"	1	PC	PIPE	
12	1/2"	1	PC	PIPE	
13	1/2"	1	PC	PIPE	
14	1/2"	1	PC	PIPE	
15	1/2"	1	PC	PIPE	
16	1/2"	1	PC	PIPE	
17	1/2"	1	PC	PIPE	
18	1/2"	1	PC	PIPE	
19	1/2"	1	PC	PIPE	
20	1/2"	1	PC	PIPE	
21	1/2"	1	PC	PIPE	
22	1/2"	1	PC	PIPE	
23	1/2"	1	PC	PIPE	
24	1/2"	1	PC	PIPE	
25	1/2"	1	PC	PIPE	
26	1/2"	1	PC	PIPE	
27	1/2"	1	PC	PIPE	
28	1/2"	1	PC	PIPE	
29	1/2"	1	PC	PIPE	
30	1/2"	1	PC	PIPE	
31	1/2"	1	PC	PIPE	
32	1/2"	1	PC	PIPE	
33	1/2"	1	PC	PIPE	
34	1/2"	1	PC	PIPE	
35	1/2"	1	PC	PIPE	
36	1/2"	1	PC	PIPE	
37	1/2"	1	PC	PIPE	
38	1/2"	1	PC	PIPE	
39	1/2"	1	PC	PIPE	
40	1/2"	1	PC	PIPE	
41	1/2"	1	PC	PIPE	
42	1/2"	1	PC	PIPE	
43	1/2"	1	PC	PIPE	
44	1/2"	1	PC	PIPE	
45	1/2"	1	PC	PIPE	
46	1/2"	1	PC	PIPE	
47	1/2"	1	PC	PIPE	
48	1/2"	1	PC	PIPE	
49	1/2"	1	PC	PIPE	
50	1/2"	1	PC	PIPE	
51	1/2"	1	PC	PIPE	
52	1/2"	1	PC	PIPE	
53	1/2"	1	PC	PIPE	
54	1/2"	1	PC	PIPE	
55	1/2"	1	PC	PIPE	
56	1/2"	1	PC	PIPE	
57	1/2"	1	PC	PIPE	
58	1/2"	1	PC	PIPE	
59	1/2"	1	PC	PIPE	
60	1/2"	1	PC	PIPE	
61	1/2"	1	PC	PIPE	
62	1/2"	1	PC	PIPE	
63	1/2"	1	PC	PIPE	
64	1/2"	1	PC	PIPE	
65	1/2"	1	PC	PIPE	
66	1/2"	1	PC	PIPE	
67	1/2"	1	PC	PIPE	
68	1/2"	1	PC	PIPE	
69	1/2"	1	PC	PIPE	
70	1/2"	1	PC	PIPE	
71	1/2"	1	PC	PIPE	
72	1/2"	1	PC	PIPE	
73	1/2"	1	PC	PIPE	
74	1/2"	1	PC	PIPE	
75	1/2"	1	PC	PIPE	
76	1/2"	1	PC	PIPE	
77	1/2"	1	PC	PIPE	
78	1/2"	1	PC	PIPE	
79	1/2"	1	PC	PIPE	
80	1/2"	1	PC	PIPE	
81	1/2"	1	PC	PIPE	
82	1/2"	1	PC	PIPE	
83	1/2"	1	PC	PIPE	
84	1/2"	1	PC	PIPE	
85	1/2"	1	PC	PIPE	
86	1/2"	1	PC	PIPE	
87	1/2"	1	PC	PIPE	
88	1/2"	1	PC	PIPE	
89	1/2"	1	PC	PIPE	
90	1/2"	1	PC	PIPE	
91	1/2"	1	PC	PIPE	
92	1/2"	1	PC	PIPE	
93	1/2"	1	PC	PIPE	
94	1/2"	1	PC	PIPE	
95	1/2"	1	PC	PIPE	
96	1/2"	1	PC	PIPE	
97	1/2"	1	PC	PIPE	
98	1/2"	1	PC	PIPE	
99	1/2"	1	PC	PIPE	
100	1/2"	1	PC	PIPE	

LAST WELD NO.		BILL OF MATERIAL		CONDITION	
47		DUKE POWER COMPANY		LAST NO.	
		McGUIRE NUCLEAR STATION		11A	
NUCLEAR SAFETY RELATED		TEC. NO.		BUILDING	
		11A		11A	
PREPARED BY		SYMBOL		DRAWING NO.	
2001		N/C		2001	
APPROVED BY		CLASS		NO. NO.	
A. M. E. 500		A		11A	
		CLASS		REV.	
		A		7	

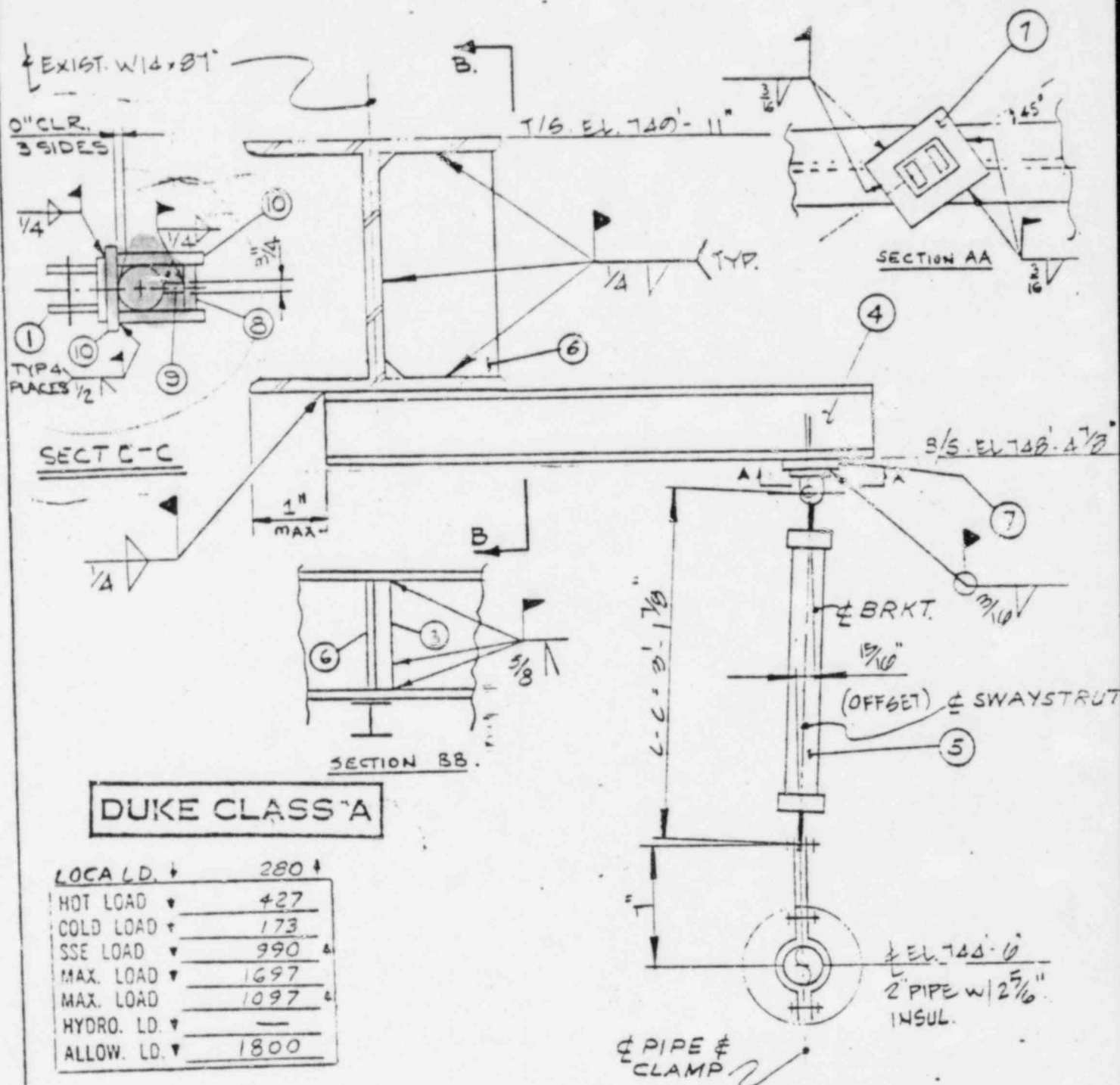


★ DENOTES FLUSH WELDS ARE 1/4" OF 1/4"

NOTE 1 - THIS SYMBOL DENOTES MATERIAL THAT IS NOT TO BE USED BY INSPECTOR FOR THE

NOTE 2 - THIS SYMBOL DENOTES MATERIAL THAT IS NOT TO BE USED BY INSPECTOR FOR THE

NOTE 3 - ALL WELDS ON THIS LEO TO RECEIVE FULL INSPECTION



DUKE CLASS A

LOCA LD. ↓	280 ↓
HOT LOAD ↓	427
COLD LOAD ↓	173
SSE LOAD ↓	990
MAX. LOAD ↓	1697
MAX. LOAD	1097
HYDRO. LD. ↓	—
ALLOW. LD. ↓	1800

N-S (NUMBER)

COLD LD	0
HOT LOAD	0
SSE LOAD +	1723
MAX. LOAD +	2461
ALLOW. LD. +	2500

LOCA LD. = 738

ELEVATION A-A

(PIPE & REAR BRKT. ROTATED FOR CLARITY)

**QA CONDITION 1
NUCLEAR SAFETY RELATED**

UNCONTROLLED

EDS NUCLEAR, INC.
SAN FRANCISCO, CALIFORNIA

DUKE POWER COMPANY
CONSTRUCTION
McGUIRE NUCLEAR STATION



DRN	DES	CHK	APP	DATE	REV
KDP	KDP	AG	BEB	12-15-81	5
JOB. NO.	0002431				SHEET
MARK & DWG. NO.	2M02-NL-4203				2 OF 3

S/R Revision Description

☒ Revision requires no structural or hardware changes

☐ Revision requires changes to or additions of following items:

② ~~REVISED LOADS & LOCATION. REVISED ITEM # 1.~~

~~ADDED ITEMS # 3, 4, 5 & 6 PER AS-BUILT. THIS S/R~~

~~REPLACES 2 MCR NC-4203. ADDED SECTION "A"~~

~~AND SECTION 25.~~

③ ~~REVISED LOCATION, ADDED ITEMS 8, 9, & 10, REVISED~~

~~ITEM 1, FIELD TO VERIFY LOCATION FROM VALVES~~

~~ADDED SECTION C-C.~~

④ ~~ADDED WELD SET, ITEM 9 & PIPE~~

⑤ ~~REVISED LOCATION PLAN & PER VN-H1075~~

Welded Attachment
Approval (SAG)

Rev _____ Date _____

4 MCB for JNU 11/26/91

5 MCB for NCB 12/15/91

CLASS A

QA CONDITION 1

NUCLEAR SAFETY RELATED

☐ Major Redesign

DUKE POWER COMPANY
PROJECT MACQUIRE NUCLEAR STATION UNIT 2

ANALYSIS PROBLEM NO SEE SHT 1 DATA PT

REV.	DATE	CHECK	DESIGN	DESCRIPTION	APPROV	DATE
2	9-28-91	NS	NA	SEE ABOVE	SES	9-1-91
3	11-18-91	AG	NA	SEE ABOVE	NER	10-3-91
4	11-18-91	CM	NA	SEE ABOVE	NER	10-3-91
5	11-18-91	AG	NA	SEE ABOVE	NER	12-15-91
1				STOP		
				NOT FOR		
				CONSTRUCTION		

DESIGNER/DATE 11-26-91 11-26-91 INSPECTED/DATE 11-26-91
DRAWN/DATE 11-26-91 11-26-91 INSPECTED/DATE 11-26-91
CHECKED/DATE N. Shah 2-25-91 APPROVED/DATE 11-26-91

REFERENCE DRAWINGS

PIPE ☒ REF. _____
CIVIL ☒ REF. _____
ELEC. ☒ SEE SHT. 1 REF. _____
H.V.A.C. ☒ REF. _____
MARK NO. 2MCR-NC-4203 REF. 5
SHEET 3 OF 3