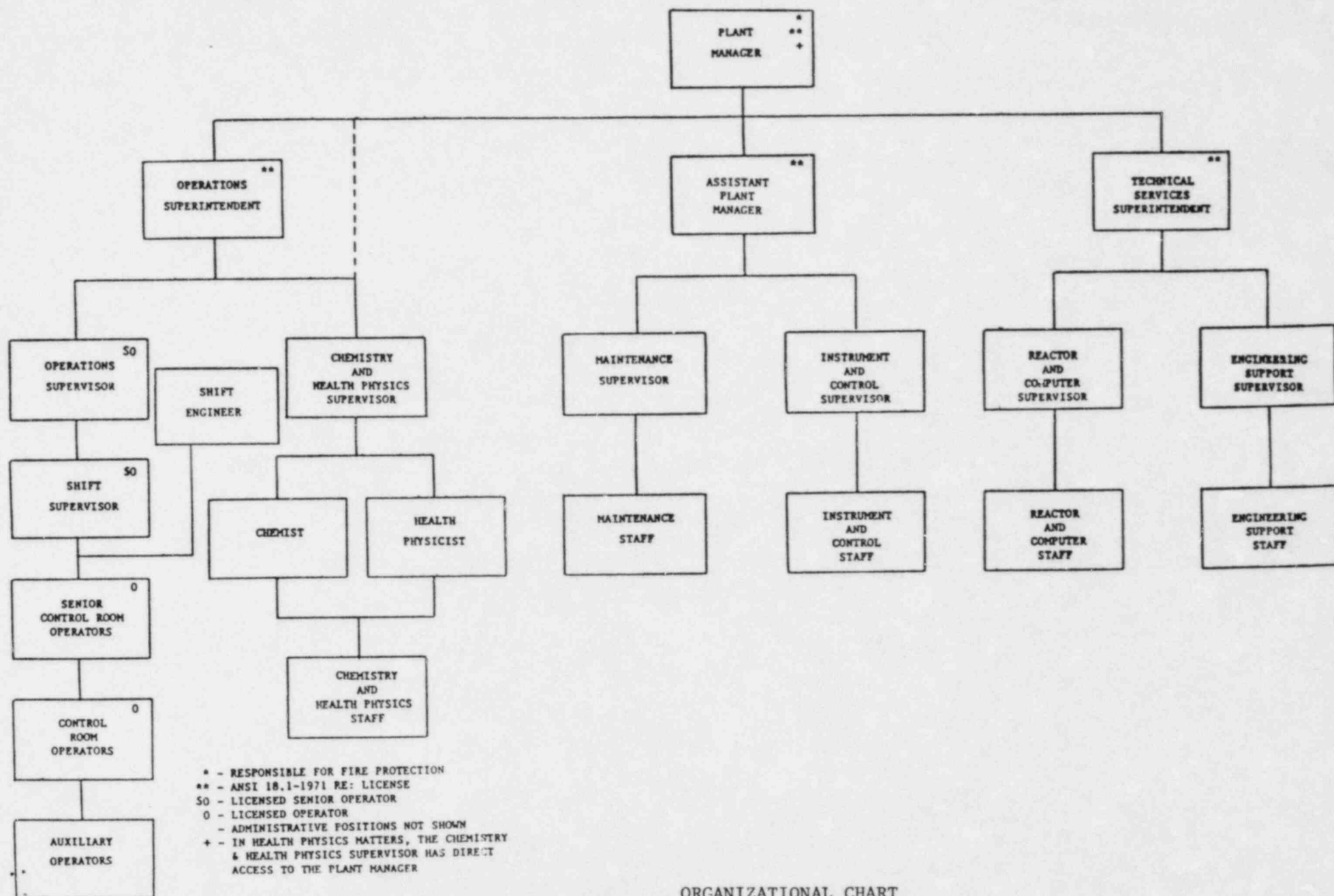


VYNPS

5. The Plant Health Physicist shall meet or exceed the qualifications of Regulatory Guide 1.8, Revision 1 (September 1975).
  6. The Shift Engineer shall have a bachelor's degree or equivalent in a scientific or engineering discipline with specific training in plant design, and response and analysis of the plant for transients and accidents.
- E. A Fire Brigade of at least five members shall be maintained on-site at all times. # This excludes two members of the minimum shift crew necessary for safe shutdowns of the plant and any personnel required for other essential functions during a fire emergency.

# Fire Brigade composition may be less than the minimum requirements for a period of time not to exceed two hours in order to accommodate unexpected absence of Fire Brigade members provided immediate action is taken to restore the Fire Brigade to within the minimum requirements.

# VERMONT YANKEE NUCLEAR POWER STATION



ORGANIZATIONAL CHART  
FIGURE 6.1.2

## VYNPS

TABLE 6.1.1

Vermont Yankee staff positions that shall be filled by personnel holding Senior Operator and Operator licenses are indicated in the following table:

<u>Title</u>	<u>License</u>
Operations Supervisor	Senior Operator
Shift Supervisor	Senior Operator
Supervisory Control Room Operator	Operator
Control Room Operator	Operator

MINIMUM SHIFT CREW PERSONNEL & LICENSE REQUIREMENTS	<u>Conditions</u>		
	<u>Normal Operation</u>	<u>Plant Startup</u>	<u>Cold Shutdown</u>
Shift Supervisor	(1)	(1)	-
Supervisory Control Room Operator	(1)	(1)	(1)
Control Room Operator	(1)	(1)	(1)
Auxiliary Operator	(2)	(2)	(1)
Shift Engineer	(1)	(1)	-
Senior Operators License	(1)	(1)	(1)
Operators License	(2)	(2)	(1)