

USNRO REGION II
GEORGIA
VIRGINIA ELECTRIC AND POWER COMPANY
RICHMOND, VIRGINIA 23261

82 JUL 1 AIO: 09

June 28, 1982

R. H. LEASBURG
VICE PRESIDENT
NUCLEAR OPERATIONS

Mr. James P. O'Reilly,
Regional Administrator
U. S. Nuclear Regulatory Commission
Region II
101 Marietta Street, Suite 3100
Atlanta, Georgia 30303

Serial No. 353A
NO/RMT:acm
Docket No. 50-339
License No. NPF-7

Dear Sir:

This letter is in response to a request made by your staff on June 10, 1982 during a telecon with our staff at North Anna Power Station and Corporate Office personnel concerning inspections related to Inspection and Enforcement Bulletin 79-13, Revision 2.

The initial inspection required by the bulletin was satisfactorily completed after hot functional testing was completed on the Unit. As was discussed during the telecon, the Steam Generator/Feedwater piping configuration on North Anna One and Two has not exhibited the water hammer problems that were described in earlier Westinghouse notices.

The recent inservice inspection conducted during the refueling outage on the feedwater piping between the Steam Generator and the first isolation valves yielded no recordable indications.

The specific areas which were inspected are as follows;

- A. One (1), 16" pipe to nozzle weld was volumetrically examined: there were no recordable indications by ultrasonic testing (line no. 16"WFTD-423-601-Q2, weld number 19).

Reference: DWG NO. VGB-2-2201-[B loop], completed on April, 14, 1982.

- B. One (1) welded attachment was examined by a magnetic particle test with no recordable indications (line no. 16"-WFPD-424-601-Q2[welded support]-1).

Reference: DWG. NO. VGB-2-2101-[A loop], completed on April, 14, 1982.

- C. Nine (9), class 2 pipe supports were visually inspected with no recordable indications (line no. 16" WFPD-424-601-Q2[A loop]. Completed on April, 13, 1982.

Identification numbers;

H-33, H-34, H-35, H-202, H-203, H-204, H-205, H-231, H-232


- D. One (1), feedwater nozzle to Steam Generator weld was volumetrically inspected by ultrasonic testing with no recordable indications.

Weld No. 2-9, DWG. NO. VGB-2-11-00[B loop], completed on April, 14, 1982.

VIRGINIA ELECTRIC AND POWER COMPANY TO James P. O'Reilly

Based on the results of these inspections it is our conclusion that continued operation of North Anna Unit Two is justified. As was stated during the telecon, it is our intention to conduct the required inspections during the October 1982 Fall maintenance outage or first outage of sufficient length. The steam generator nozzle to pipe weld inspections : 11 be conducted in accordance with the criteria set forth in Ibb 79-13 utilizing radiographic examinations supplemented by ultrasonic examinations as necessary.

Very truly yours,


R. H. Leasburg

cc: Mr. Hugh C. Dance
Region II, Atlanta, GA. 30303

PILGRIM STATION
UNIT NO. 1
BOSTON EDISON COMPANY

FIRE PROTECTION ANALYSIS
10CFR50 - APPENDIX R

VOLUME II

Volume II
List of Sketches

Category 2 - Recommendations for Relocation of Cables
& Components, and Location of Fire Barriers

<u>13984.20- SKS-</u>	<u>BECO DWG No.</u>	<u>Title/Description</u>
61	M15	Reac. Bldg. El (-) 17'-6"
62	M16	Reac. Bldg. El 23'-0"
63	M27	Intake Struct.
64	M12	Turb. Bldg. El 23'-0"
65	M13	Turb. Bldg. El 37'-0"
66	M17	Reac. Bldg. El 37'-0"
67	M18	Reac. Bldg. El 51'-0"
68	C20	Yard - Underground Piping
69	-	Duct Lines Elev. Details Sh1
70	-	Duct Lines Elev. Details Sh2
71	-	Duct Lines Elev. Details Sh3
72	-	Duct Lines Elev. Details Sh4
73	-	Duct Lines Elev. Details Sh5
74	-	Field Sketches proposed Ductlines Sh2
C1	--	Fire Zone 1.22 - I ² t Problem
C2	--	Fire Zone 1.21 - I ² t Problem
C3	--	Fire Zone 1.9 - I ² t Problem

DOCUMENT/ PAGE PULLED

ANO. 8207150228

NO. OF PAGES 14

REASON

☐ PAGE ILLEGIBLE

☐ HARD COPY FILED AT. PDR CF

OTHER _____

☐ BETTER COPY REQUESTED ON _____

☒ PAGE TOO LARGE TO FILM

☒ HARD COPY FILED AT. PDR

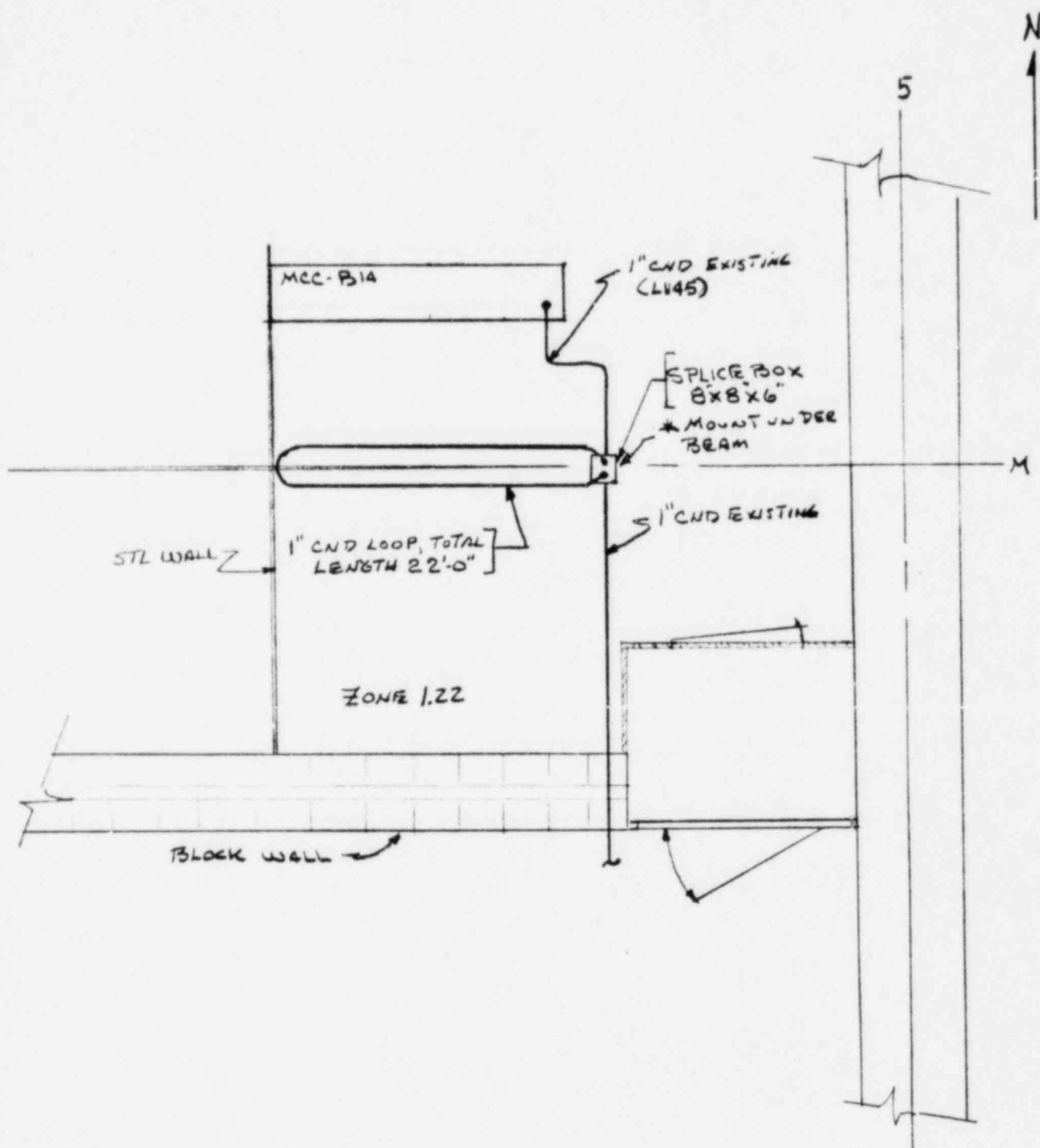
OTHER

(CF)

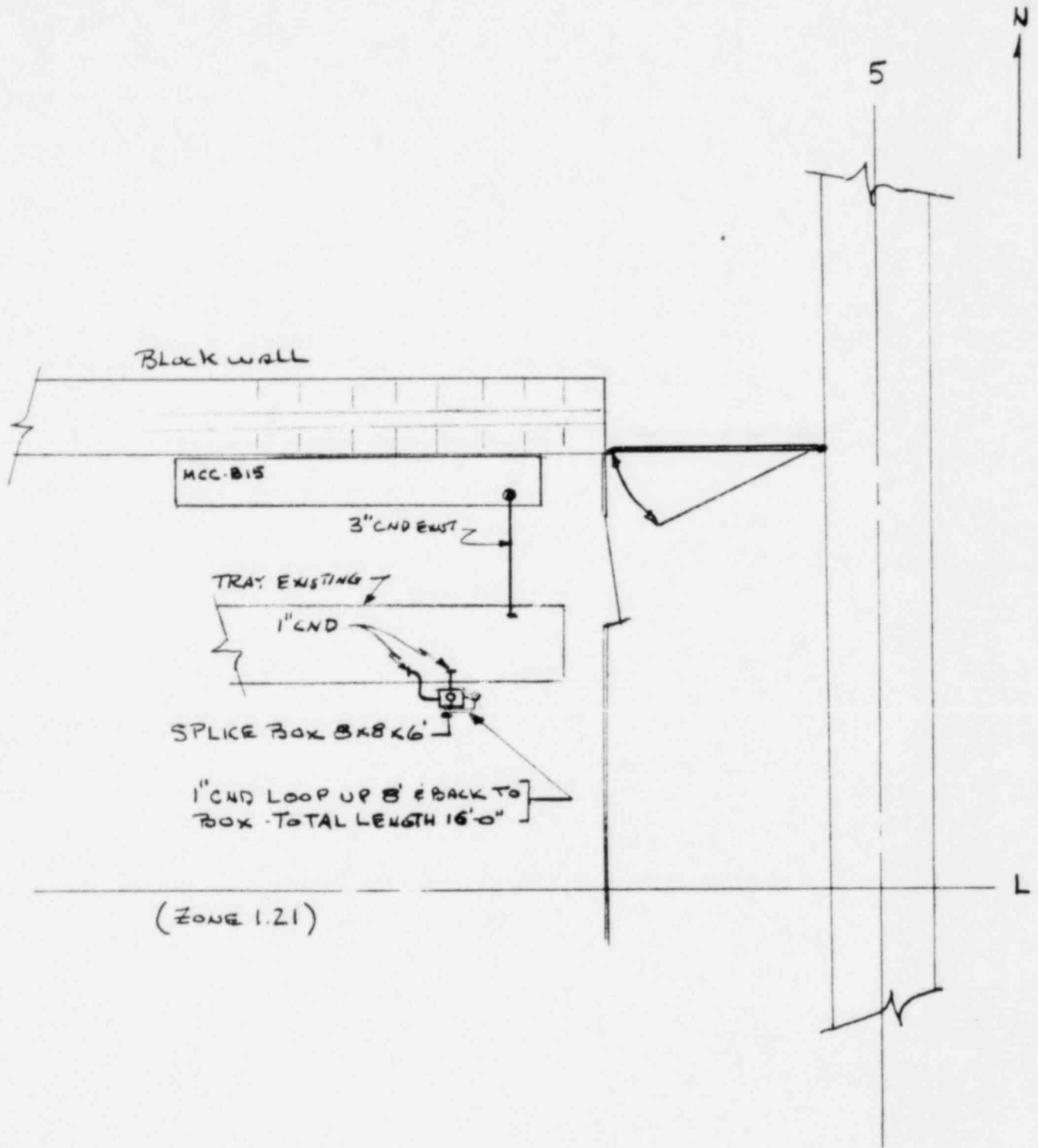
☒ FILMED ON APERTURE CARD NO 8207150228-14

thru

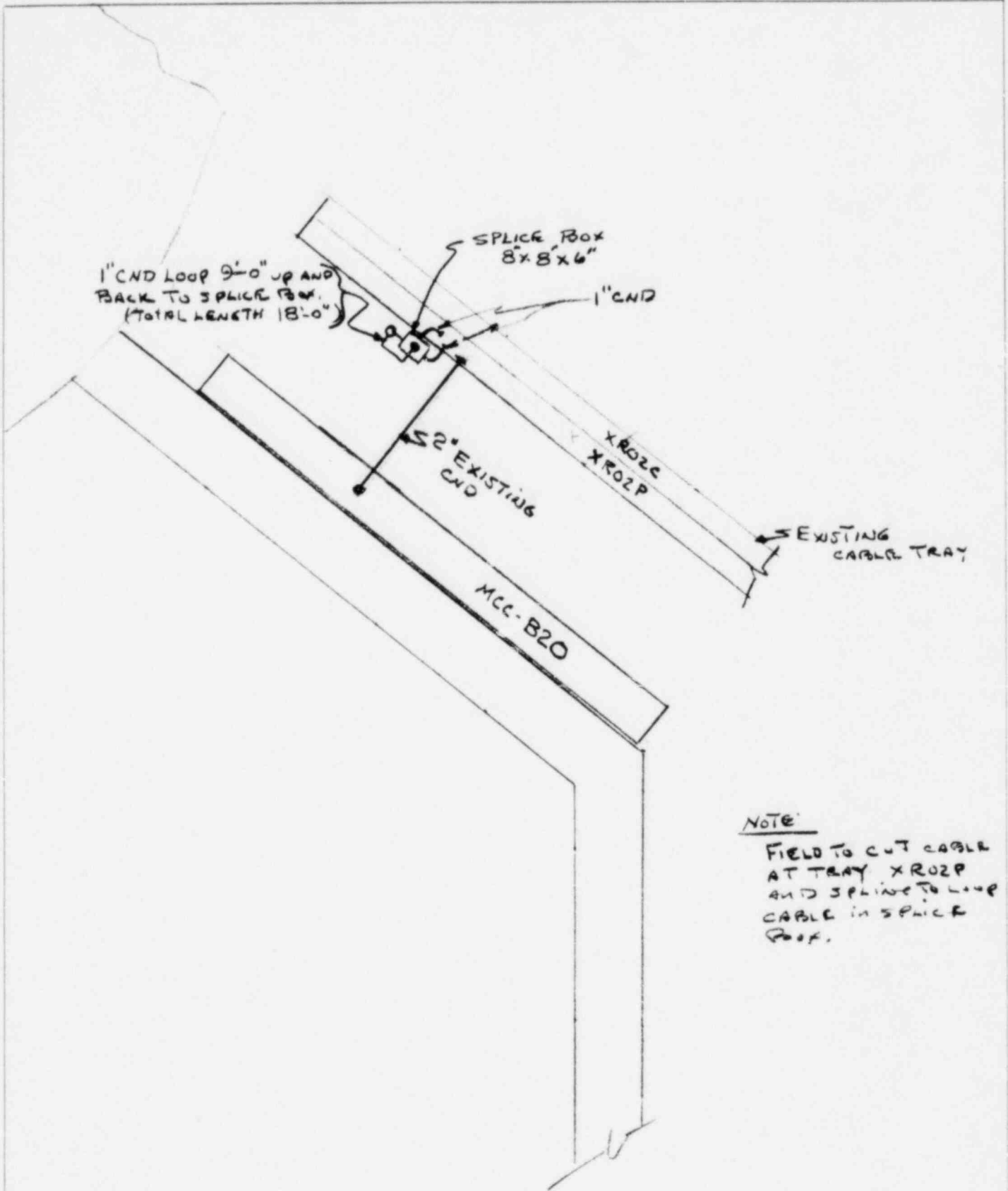
8207150288-27



POWER INDUSTRY GROUP		TITLE I ² T CABLE B1063A PROBLEM			SCALE 1/4" = 1'-0"	
CHECKED	<i>[Signature]</i>	SOLUTION IN ZONE 1.22			DATE 12-2-81	
CORRECT	<i>[Signature]</i>				SKETCH NUMBER	
APPROVED	<i>[Signature]</i>				13984.20 EKS-C1	
REVISIONS	(2)	(3)	(4)	(5)		



POWER INDUSTRY GROUP		TITLE I ² T CABLE <u>SAB15163A</u>			SCALE: $\frac{1}{4}" = 1'-0"$
CHECKED	<i>AS</i>	PROBLEM SOLUTION IN ZONE 1.21			DATE: 12-2-81
CORRECT	<i>MPL/BS</i>				SKETCH NUMBER
APPROVED	<i>MC</i> 1-14-92				13984.20-EKS-C2
REVISIONS	(2)	(3)	(4)	(5)	



NOTE:

FIELD TO CUT CABLE
AT TRAY XRO2P
AND SPINE TO LOOP
CABLE IN SPLICE
BOX.

POWER INDUSTRY GROUP		TITLE I ² T CABLE B2061A PROBLEM			SCALE: 1/4" = 1'-0"
CHECKED	<i>MS</i>	SOLUTION IN ZONE 1.9			DATE: 12-9-81
CORRECT	<i>MPL/SIS</i>				SKETCH NUMBER
APPROVED	<i>MC 1-8-92</i>				13984.20 EKS-C3
REVISIONS	(2)	(3)	(4)	(5)	

PILGRIM STATION
UNIT NO. 1
BOSTON EDISON COMPANY

FIRE PROTECTION ANALYSIS
10CFR50 - APPENDIX R

VOLUME III

Volume III

List of Sketches

Category 1 - Location of Existing Problem Cables & Components

SWEC Sketch No. <u>13984.20-EKS-</u>	BECO Dwg. No.	<u>Title/Description</u>
21	E296	Ca. Tray & Conduit - Reac. Bldg. Area 1 Plan El (-)17'-6"
22	E297	Ca. Tray & Conduit - Reac. Bldg. Area 3 Plan El (-)17'-6"
23	E298	Ca. Tray & Conduit - Reac. Bldg. Area 1 & 3 Plan above El 23'-0"
25	E301	Ca. Tray & Conduit - Reac. Bldg. Area 1 & 3 Plan above El 51'-0"
26	E302	Ca. Tray & Conduit - Reac. Bldg. Area 1 & 3 Plan above El 74'-3"
30	E308	Ca. Tray & Conduit Sections and Details
31	E309	Ca. Tray & Conduit Aux. Bay Area 2, Plan El 3'-0" and El (-)17'-0"
32	E310	Ca. Tray & Conduit Aux. Bay Area 2, Plan El 23'-0"
36	E316	Conduit Layout Diesel Gen. Bldg. Area 5
37	E320	Ca. Tray and Conduit - Turbine Bldg. Area 7, Below El 23'-0" and below 37'-0"
38	E321	Ca. Tray & Conduit - Turbine Bldg. Area 8, Below El 51'-0" and above El 51'-0"
40	E328	Ca. Tray & Conduit - Turbine Bldg. Area 9, Below El 37'-0"
41	E329	Ca. Tray & Conduit - Turbine Bldg. Area 9, Below El 51'-0"
42	E331	Ca. Tray & Conduit, Sections and Details
44	E333	Raceway-Cable Spreading Rm. El 23'-0" SH1
45	E335	Raceway-Cable Spreading Rm. El 23'-0" SH2

List of Sketches
Category 1 (Cont'd)

<u>SWEC</u> <u>Sketch No.</u> <u>13984.20-EKS-</u>	<u>BECO</u> <u>Dwg. No.</u>	<u>Title/Description</u>
47	E340	CRD Position Ind. Sched. & Drywell Layout CO ₂ Sys.
48	E343	Ca. Tray & Cond. Layout Intake Struct. Superstructure - El 23'-0'
51	E307	Ca. Tray & Conduit Layout Reac. Bldg. Sections and Details
52	E317	Cond. Layout Switchgr. Rm. Section and Details
53	E318	Cond. & Ca. Tray-Turb. Bldg. Area 6 - Below El 23'-0" & El 37'-0"
54	E334	Cond. & Ca. Tray - Control Rm. & Ca. Spreading Rm. El 23' and El 37'-0"
55	E339	CRD Position Ind. Schedule and Drywell Layout SH2

DOCUMENT/ PAGE PULLED

ANO. 8207150228

NO. OF PAGES 23

REASON

☐ PAGE ILLEGIBLE

☐ HARD COPY FILED AT. PDR CF

OTHER _____

☐ BETTER COPY REQUESTED ON _____

☒ PAGE TOO LARGE TO FILM

☒ HARD COPY FILED AT. PDR

OTHER

(CF)

☒ FILMED ON APERTURE CARD NO 8207150228-28

thru

8207150288-50