

ILLINOIS POWER COMPANY



CLINTON POWER STATION, R.R. #3, BOX 228, CLINTON, IL 61727

April 8, 1982



Ms. Ann Ramey-Smith, Mail Stop 228  
Division of Human Factors Safety  
U.S. Nuclear Regulatory Commission  
Washington, D.C. 20555

Dear Ms. Ramey-Smith,

Illinois Power Company is in the process of reviewing the Remote Shutdown Panel (RSP) based on items raised in the Control Room Audit/Review from human factors engineering. I would like to address specifically two items raised in the review since these require major modifications to the panel.

The first is in response to item C-1.1 of the audit which deals with the spacing between the RSP and the adjacent electrical panel. Figure 1 shows the panel as it currently exists, consisting in order of Bays A, B, C, D and E. Bays A, B, C, and D constitute one assembly as does Bay E. IPC plans to rotate each assembly 180 degrees with the final arrangement of the panel being as shown in Figure 2. This rotation will increase the operating space of the RSP from 32 inches to approximately 48 inches which is the maximum attainable and we feel is adequate for safe operation of the panel.

The second concern which I would like to address, is in regard to item C-9.3 of the audit which states that the meters in the BOP section of the RSP cannot be read from the location of the associated NSSS division 1 controls in the middle and left sections of the panel. It is clear from looking at Figure 2 that the rotation of the panels significantly reduces the distance between the meters and the controls. In addition to this, IPC is installing four division 2 meters in the NSSS division 2 section of the RSP. These meters are redundant to the division 1 meters indicating; Reactor Water Level and Pressure, and Suppression Pool Temperature and Level. These meters will be installed so that the information is conveniently located for the operator when operating the RSP.

B001  
s  
1/1

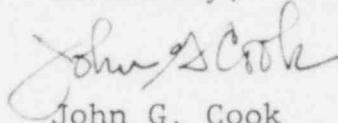
8204200391 820408  
PDR ADDCK 05000461  
A PDR

April 8, 1982

A complete list of modifications arising from the audit will be supplied later and are not reflected on Figures 1 and 2. However, since the changes proposed from items C-1.1 and C-9.3 involve considerable expense for Illinois Power Company, I thought it prudent to solicit your agreement with these modifications before we proceed.

I look forward to hearing from you.

Sincerely,



John G. Cook  
Technical Supervisor

JGC/jb  
Attachments

cc: L. S. Brodsky, T-31  
G. E. Wuller, F-33  
J. P. O'Brien, F-33  
T. F. Plunkett, T-31

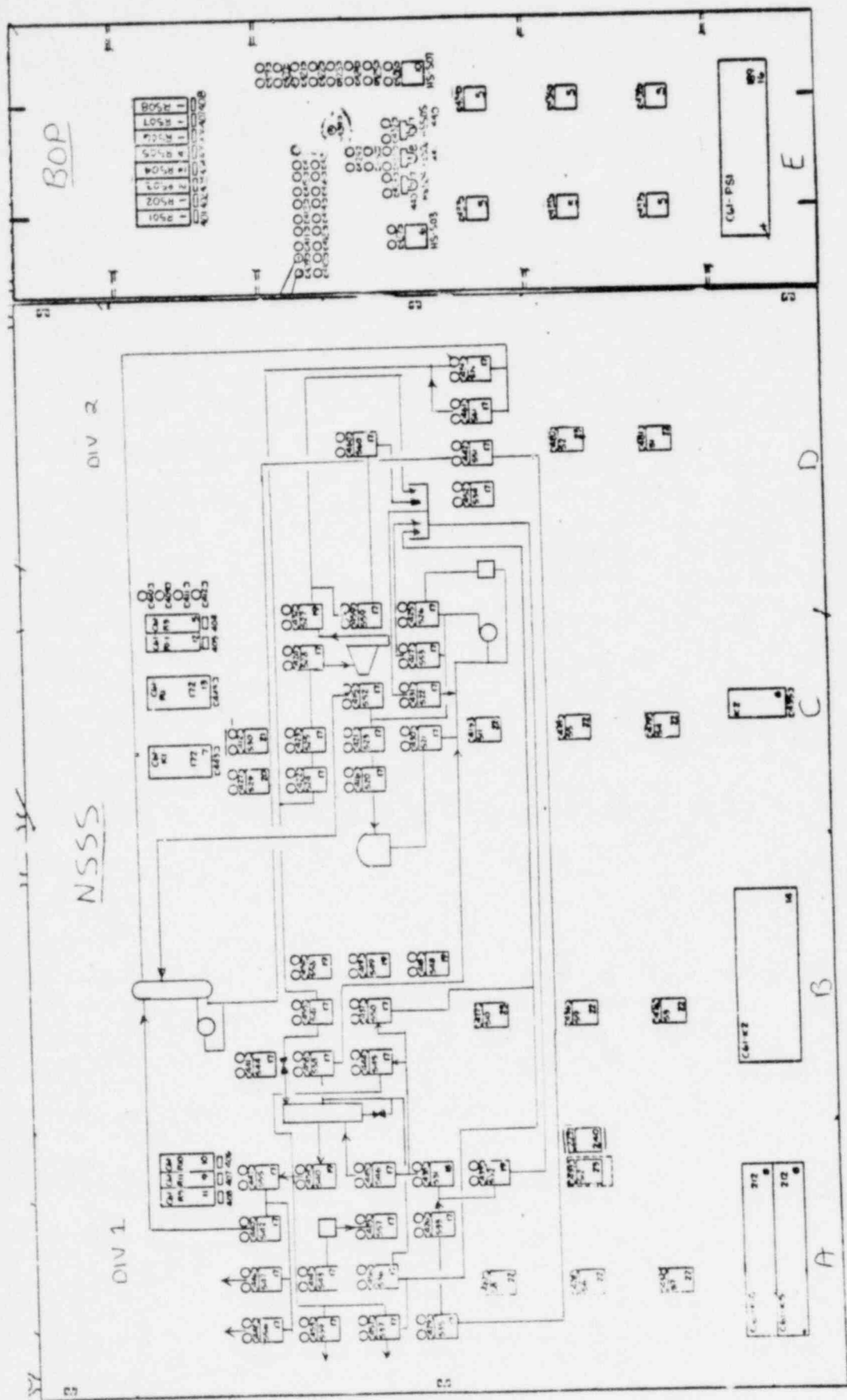


FIGURE 1. RSP (RESENT CONFIGURATION)

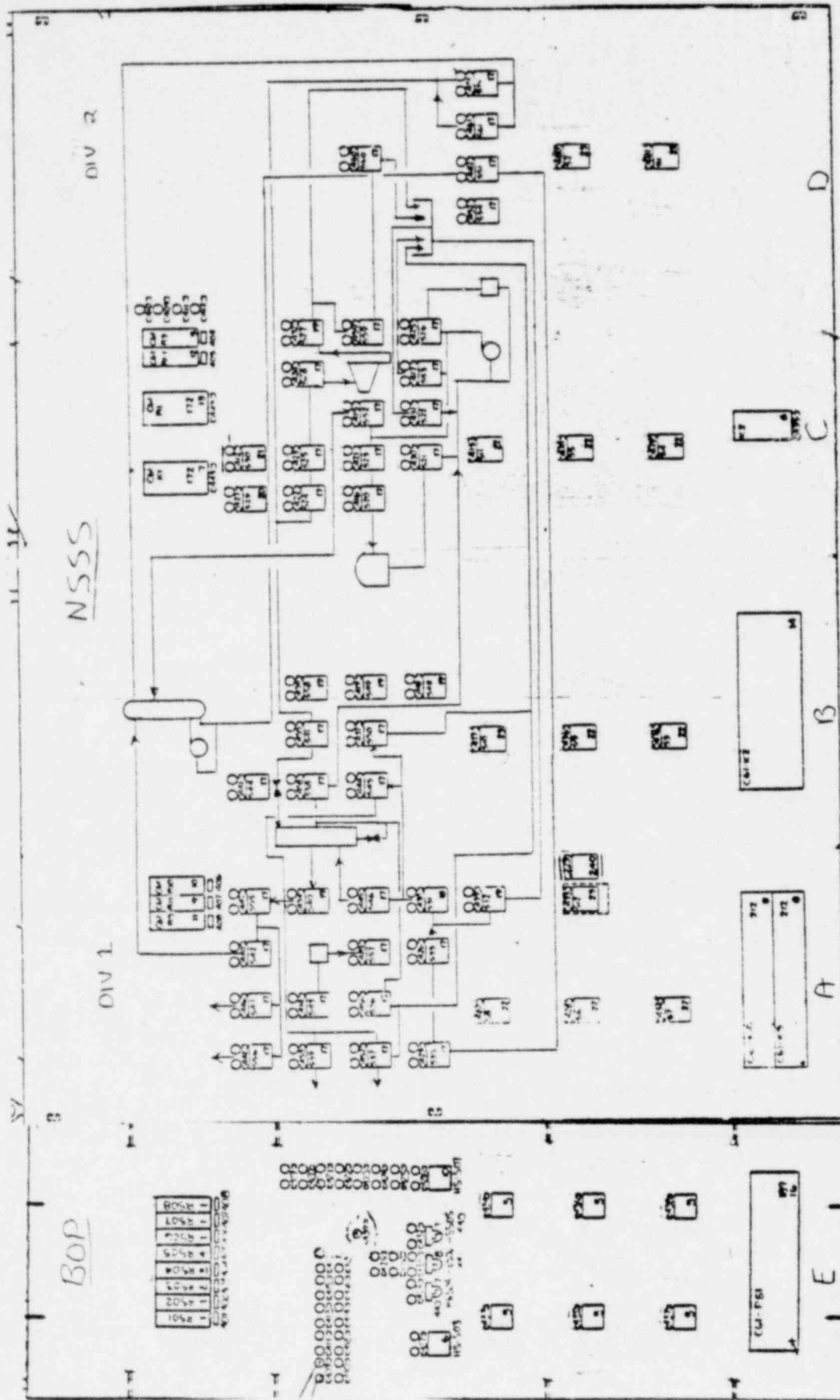


FIGURE 2. Rotated panel  
(PROPOSED CONFIGURATION)