

4.0 ADMINISTRATIVE CONTROLS

6.1 Organization

- A. The plant superintendent has on-site responsibilities for the safe operation of the facility and shall report to the Nuclear Production Manager. In the absence of the plant superintendent, an assistant superintendent will assume his responsibilities.
- B. The portion of TVA management which relates to the operation of the plant is shown in Figure 6.1-1.
- C. The functional organization for the operation of the station shall be as shown in Figure 6.1-2.
- D. Shift manning requirements shall, as a minimum, be as described in section 6.8.
- E. Qualifications of the Browns Ferry Nuclear Plant management and operating staff shall meet the minimum acceptable levels as described in ANSI - N18.1, Selection and Training of Nuclear Power Plant Personnel, dated March 8, 1971. The qualifications of the Health Physics Supervisor will meet or exceed the minimum acceptable levels as described in Regulatory Guide 1.8, Revision 1, dated Sept. 1975.
- F. Retraining and replacement training of station personnel shall be in accordance with ANSI - N18.1, Selection and Training of Nuclear Power Plant Personnel, dated March 8, 1971. The minimum frequency of the retraining program shall be every two years.
- G. An Industrial Security Program shall be maintained for the life of the plant.
- H. The Safety Engineer shall have the following qualifications:
 - a. Must have a sound understanding and thorough technical knowledge of safety and fire protection practices, procedures, standards, and other codes relating to electrical utility operations. Must be able to read and understand engineering drawings. Must possess an analytical ability for problem solving and data analysis. Must be able to communicate well both orally and in writing and must be able to write investigative reports and prepare written procedures. Must have the ability to secure the cooperation of management, employees and groups in the implementation of safety programs. Must be able to conduct safety presentations for supervisors and employees.
 - b. Should have experience in safety engineering work at this level or have 3 years experience in safety and/or fire protection engineering. It is desirable that the incumbent be a graduate of an accredited college or university with a degree in industrial, mechanical, electrical, or safety engineering or fire protection engineering.

4.9 ADMINISTRATIVE CONTROLS

1. Review adequacy of employee training programs and recommend change.

5. Authority

The PORC shall be advisory to the plant superintendent.

6. Records

Minutes shall be kept for all PORC meetings with copies sent to Director, Nuclear Power; Nuclear Production Manager; Chairman, NSRB.

7. Procedures

Written administrative procedures for committee operation shall be prepared and maintained describing the method for submission and content of presentations to the committee, review and approval by members of committee actions, dissemination of minutes, agenda and scheduling of meetings.

6.0 ADMINISTRATIVE CONTROLS

6.4 Actions to be Taken in the Event of a Reportable Occurrence in Plant Operation (Ref. Section 6.7)

- A. Any reportable occurrence shall be promptly reported to the Nuclear Production Manager and shall be promptly reviewed by PORC. This committee shall prepare a separate report for each reportable occurrence. This report shall include an evaluation of the cause of the occurrence and recommendations for appropriate action to prevent or reduce the probability of a repetition of the occurrence.
- B. Copies of all such reports shall be submitted to the Nuclear Production Manager, the Manager of Power, and the Chairman of the NSRB for their review.
- C. The plant superintendent shall notify the NRC as specified in Specification 6.7 of the circumstances of any reportable occurrence.

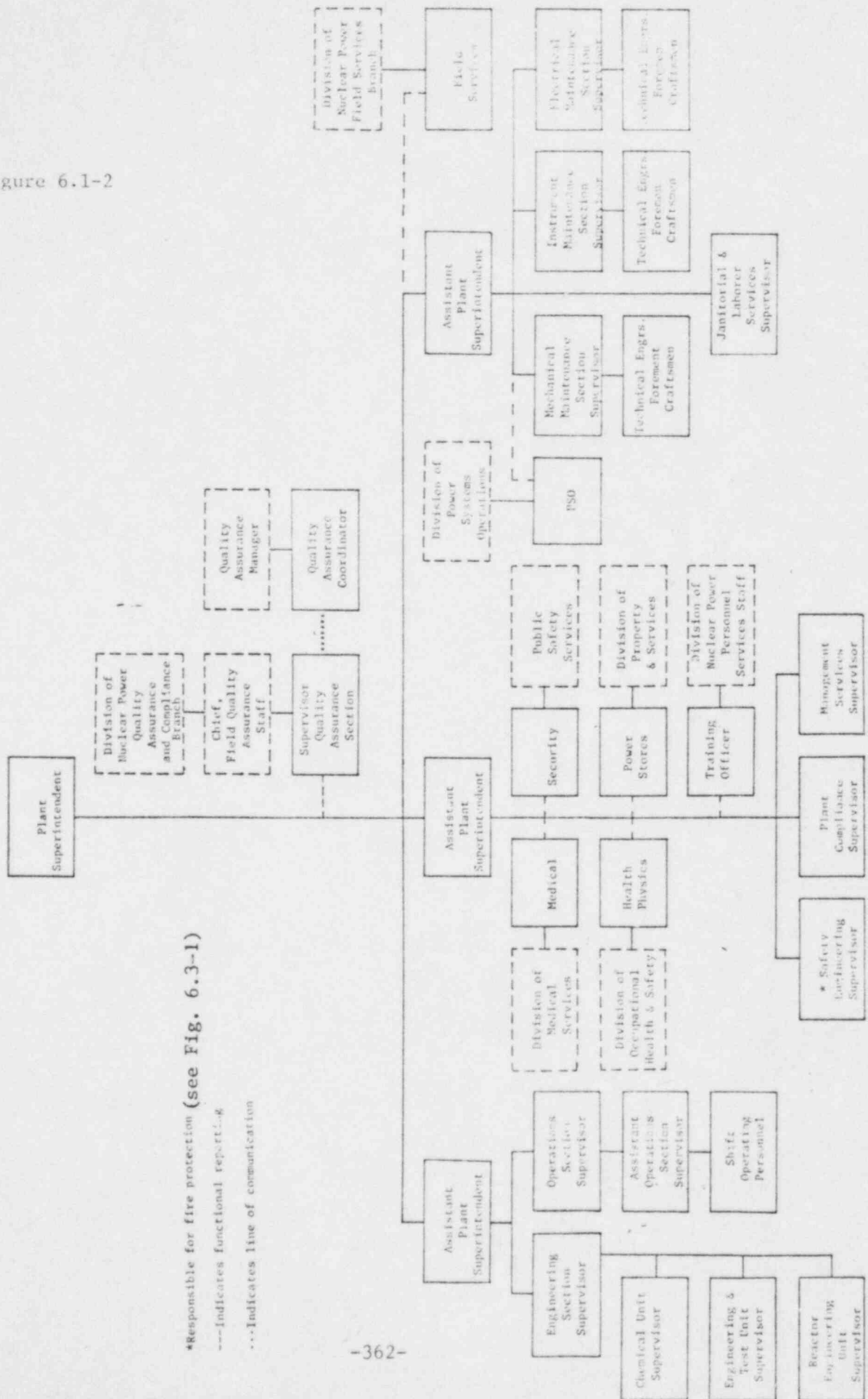
6.5 Action to be Taken in the Event a Safety Limit is Exceeded

If a safety limit is exceeded, the reactor shall be shut down and reactor operation shall not be resumed until authorized by the NRC. A prompt report shall be made to the Nuclear Production Manager and the Chairman of the NSRB. A complete analysis of the circumstances leading up to and resulting from the situation, together with recommendations to prevent a recurrence, shall be prepared by the PORC. This report shall be submitted to the Nuclear Production Manager, the Manager of Power, and the NSRB. Notification of such occurrences will be made to the NRC by the plant superintendent within 24 hours.

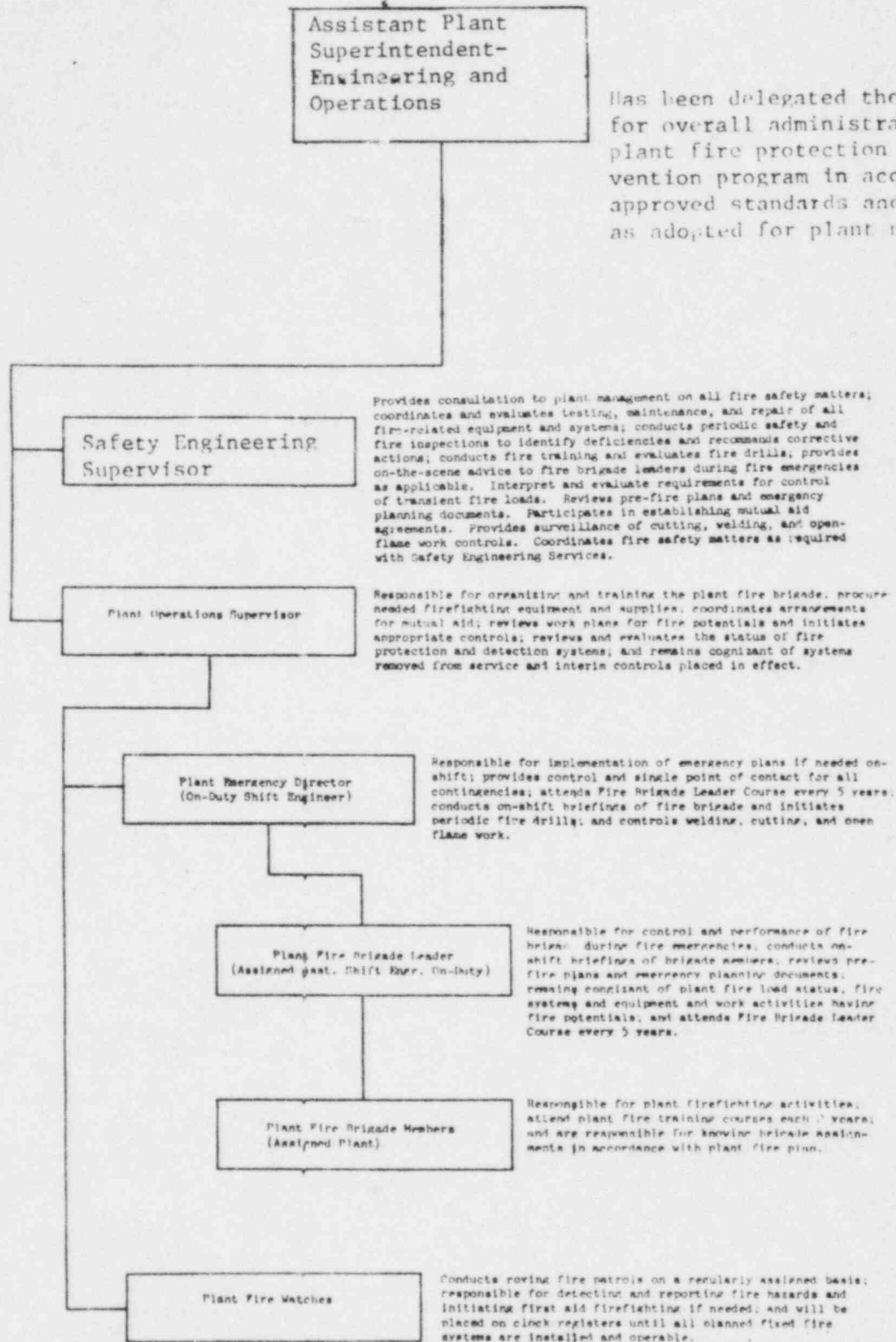
6.6 Station Operating Records

- A. Records and/or logs shall be kept in a manner convenient for review as indicated below:
 - 1. All normal plant operation including such items as power level, fuel exposure, and shutdowns
 - 2. Principal maintenance activities
 - 3. Reportable occurrences

Figure 6.1-2



IN-PLANT FIRE PROGRAM ORGANIZATION
BROWNS FERRY NUCLEAR PLANT



UNIT 3
PROPOSED CHANGES

6.0 ADMINISTRATIVE CONTROLS

6.1 Organization

- A. The plant superintendent has on-site responsibilities for the safe operation of the facility and shall report to the Nuclear Production Manager. In the absence of the plant superintendent, an assistant superintendent will assume his responsibilities.
- B. The portion of TVA management which relates to the operation of the plant is shown in Figure 6.1-1.
- C. The functional organization for the operation of the station shall be as shown in Figure 6.1-2.
- D. Shift manning requirements shall, as a minimum, be as described in section 6.8.
- E. Qualifications of the Browns Ferry Nuclear Plant management and operating staff shall meet the minimum acceptable levels as described in ANSI - N18.1, Selection and Training of Nuclear Power Plant Personnel, dated March 8, 1971. The qualifications of the Health Physics Supervisor will meet or exceed the minimum acceptable levels as described in Regulatory Guide 1.8, Revision 1, dated Sept. 1975.
- F. Retraining and replacement training of station personnel shall be in accordance with ANSI - N18.1, Selection and Training of Nuclear Power Plant Personnel, dated March 8, 1971. The minimum frequency of the retraining program shall be every two years.
- G. An Industrial Security Program shall be maintained for the life of the plant.
- H. The Safety Engineer shall have the following qualifications:
 - a. Must have a sound understanding and thorough technical knowledge of safety and fire protection practices, procedures, standards, and other codes relating to electrical utility operations. Must be able to read and understand engineering drawings.

4.0 ADMINISTRATIVE CONTROLS

1. Review adequacy of employee training programs and recommend change.

5. Authority

The PORC shall be advisory to the plant superintendent.

6. Records

Minutes shall be kept for all PORC meetings with copies sent to Director, Nuclear Power; Nuclear Production Manager; Chairman, NSRB.

7. Procedures

Written administrative procedures for committee operation shall be prepared and maintained describing the method for submission and content of presentations to the committee, review and approval by members of committee actions, dissemination of minutes, agenda and scheduling of meetings.

6.0 ADMINISTRATIVE CONTROLS

6.4 Actions to be Taken in the Event of a Reportable Occurrence in Plant Operation (Ref. Section 6.7)

- A. Any reportable occurrence shall be promptly reported to the Nuclear Production Manager and shall be promptly reviewed by PORC. This committee shall prepare a separate report for each reportable occurrence. This report shall include an evaluation of the cause of the occurrence and recommendations for appropriate action to prevent or reduce the probability of a repetition of the occurrence.
- B. Copies of all such reports shall be submitted to the Nuclear Production Manager, the Manager of Power, and the Chairman of the NSRB for their review.
- C. The plant superintendent shall notify the NRC as specified in Specification 6.7 of the circumstances of any reportable occurrence.

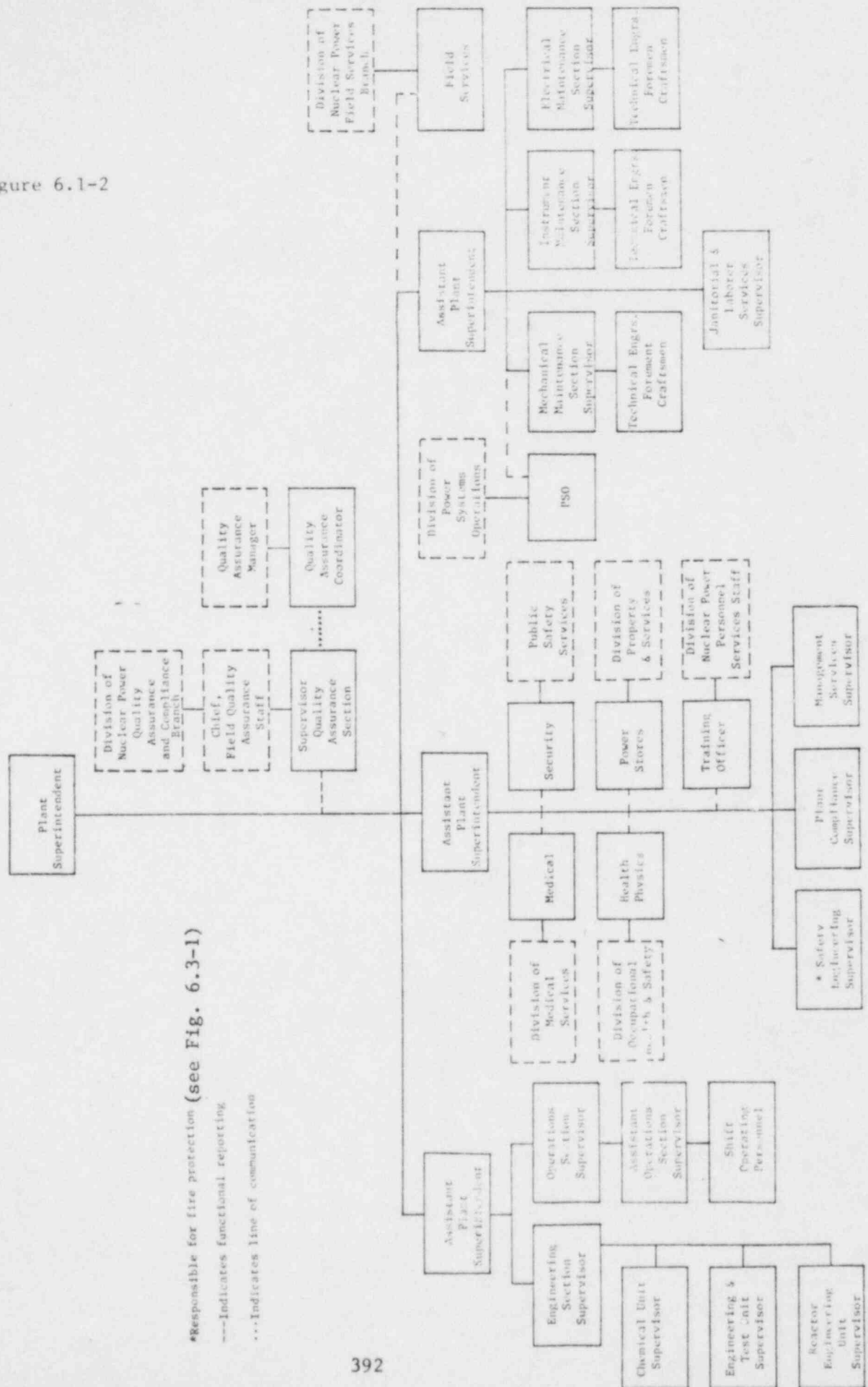
6.5 Action to be Taken in the Event a Safety Limit is Exceeded

If a safety limit is exceeded, the reactor shall be shut down and reactor operation shall not be resumed until authorized by the NRC. A prompt report shall be made to the Nuclear Production Manager and the Chairman of the NSRB. A complete analysis of the circumstances leading up to and resulting from the situation, together with recommendations to prevent a recurrence, shall be prepared by the PORC. This report shall be submitted to the Nuclear Production Manager, the Manager of Power, and the NSRB. Notification of such occurrences will be made to the NRC by the plant superintendent within 24 hours.

6.6 Station Operating Records

- A. Records and/or logs shall be kept in a manner convenient for review as indicated below:
 - 1. All normal plant operation including such items as power level, fuel exposure, and shutdowns
 - 2. Principal maintenance activities
 - 3. Reportable occurrences

Figure 6.1-2



IN-PLANT FIRE PROGRAM ORGANIZATION
BROWNS FERRY NUCLEAR PLANT

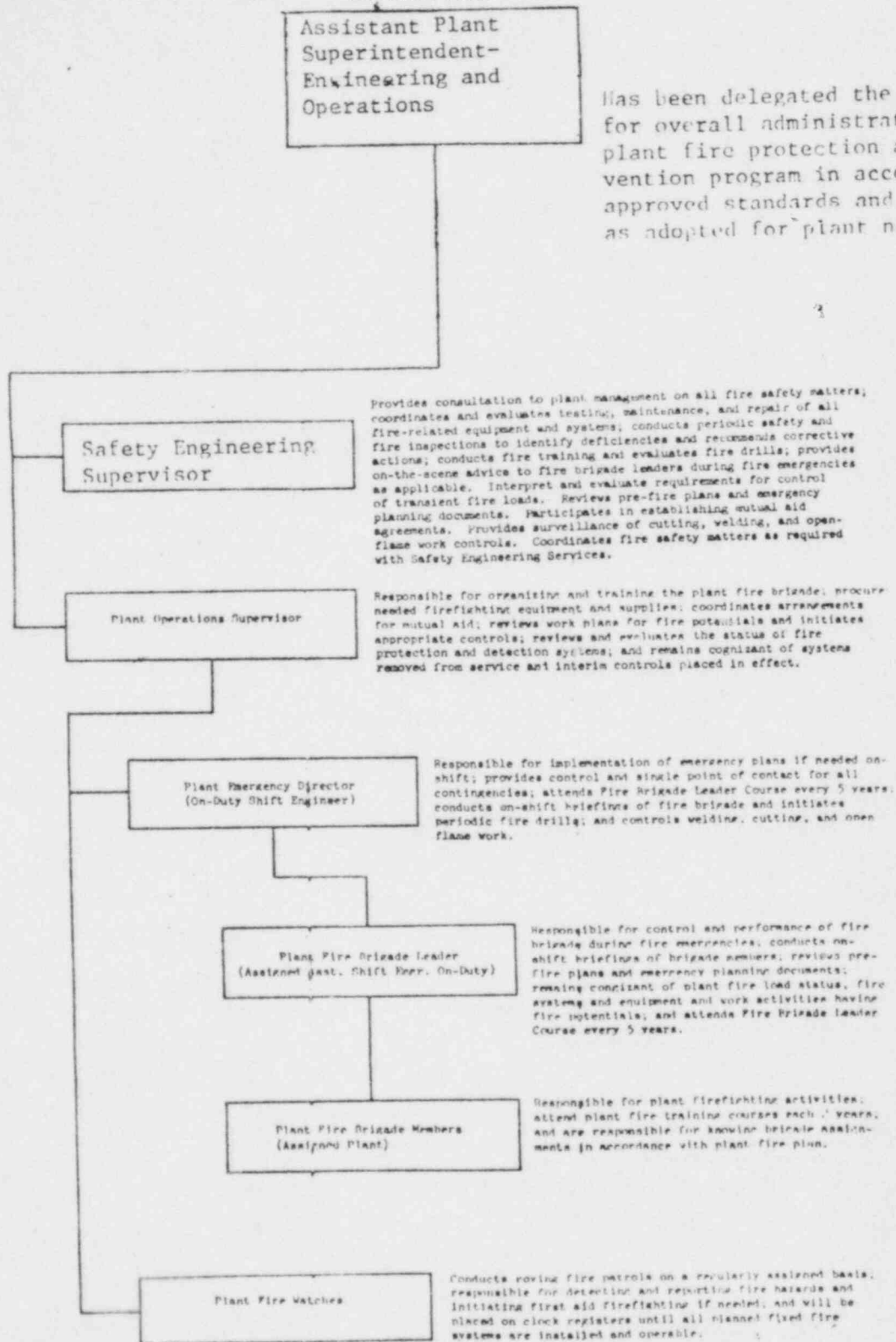


Figure 3.1-1